



Full wwPDB X-ray Structure Validation Report ⓘ

Feb 10, 2024 – 11:53 AM EST

PDB ID : 2PUN
Title : Structures of 5-methylthioribose kinase reveal substrate specificity and unusual mode of nucleotide binding
Authors : Ku, S.-Y.
Deposited on : 2007-05-09
Resolution : 2.30 Å(reported)

This is a Full wwPDB X-ray Structure Validation Report for a publicly released PDB entry.

We welcome your comments at validation@mail.wwpdb.org

A user guide is available at

<https://www.wwpdb.org/validation/2017/XrayValidationReportHelp>

with specific help available everywhere you see the ⓘ symbol.

The types of validation reports are described at

<http://www.wwpdb.org/validation/2017/FAQs#types>.

The following versions of software and data (see [references ⓘ](#)) were used in the production of this report:

MolProbity : 4.02b-467
Mogul : 1.8.5 (274361), CSD as541be (2020)
Xtriage (Phenix) : 1.13
EDS : 2.36
buster-report : 1.1.7 (2018)
Percentile statistics : 20191225.v01 (using entries in the PDB archive December 25th 2019)
Refmac : 5.8.0158
CCP4 : 7.0.044 (Gargrove)
Ideal geometry (proteins) : Engh & Huber (2001)
Ideal geometry (DNA, RNA) : Parkinson et al. (1996)
Validation Pipeline (wwPDB-VP) : 2.36

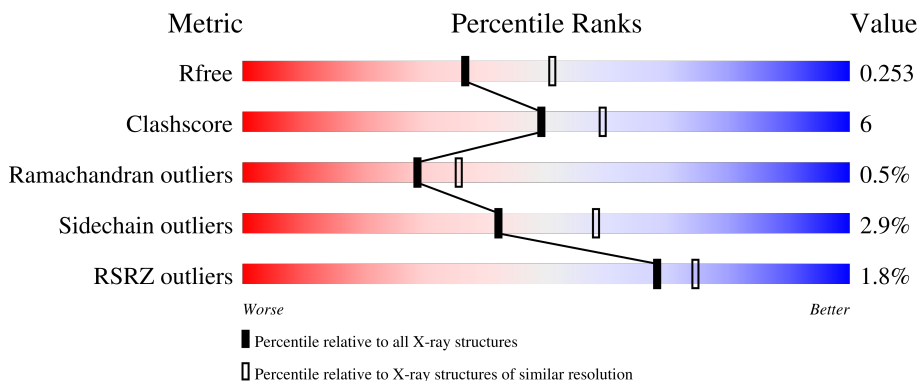
1 Overall quality at a glance

The following experimental techniques were used to determine the structure:

X-RAY DIFFRACTION

The reported resolution of this entry is 2.30 Å.

Percentile scores (ranging between 0-100) for global validation metrics of the entry are shown in the following graphic. The table shows the number of entries on which the scores are based.



Metric	Whole archive (#Entries)	Similar resolution (#Entries, resolution range(Å))
R_{free}	130704	5042 (2.30-2.30)
Clashscore	141614	5643 (2.30-2.30)
Ramachandran outliers	138981	5575 (2.30-2.30)
Sidechain outliers	138945	5575 (2.30-2.30)
RSRZ outliers	127900	4938 (2.30-2.30)

The table below summarises the geometric issues observed across the polymeric chains and their fit to the electron density. The red, orange, yellow and green segments of the lower bar indicate the fraction of residues that contain outliers for ≥ 3 , 2, 1 and 0 types of geometric quality criteria respectively. A grey segment represents the fraction of residues that are not modelled. The numeric value for each fraction is indicated below the corresponding segment, with a dot representing fractions $\leq 5\%$. The upper red bar (where present) indicates the fraction of residues that have poor fit to the electron density. The numeric value is given above the bar.

Mol	Chain	Length	Quality of chain
1	A	397	
1	B	397	

The following table lists non-polymeric compounds, carbohydrate monomers and non-standard residues in protein, DNA, RNA chains that are outliers for geometric or electron-density-fit criteria:

Mol	Type	Chain	Res	Chirality	Geometry	Clashes	Electron density
3	CPS	A	777	X	-	-	-

2 Entry composition [i](#)

There are 6 unique types of molecules in this entry. The entry contains 6399 atoms, of which 0 are hydrogens and 0 are deuteriums.

In the tables below, the ZeroOcc column contains the number of atoms modelled with zero occupancy, the AltConf column contains the number of residues with at least one atom in alternate conformation and the Trace column contains the number of residues modelled with at most 2 atoms.

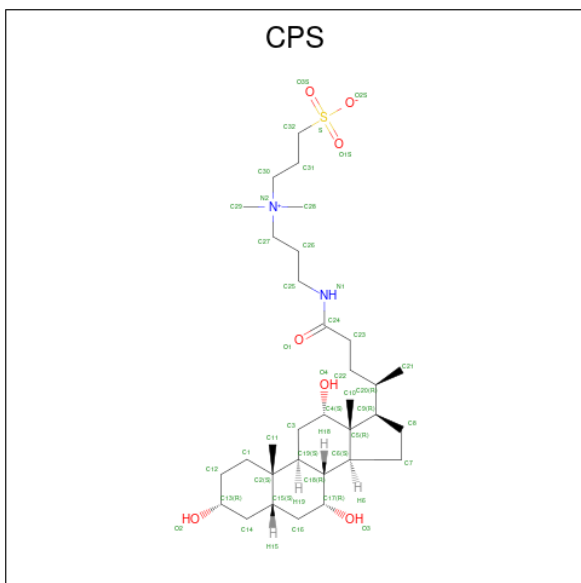
- Molecule 1 is a protein called Methylthioribose kinase.

Mol	Chain	Residues	Atoms					ZeroOcc	AltConf	Trace
			Total	C	N	O	S			
1	A	380	Total 2967	C 1912	N 489	O 561	S 5	11	0	0
1	B	378	Total 2970	C 1915	N 490	O 560	S 5	12	0	0

- Molecule 2 is MAGNESIUM ION (three-letter code: MG) (formula: Mg).

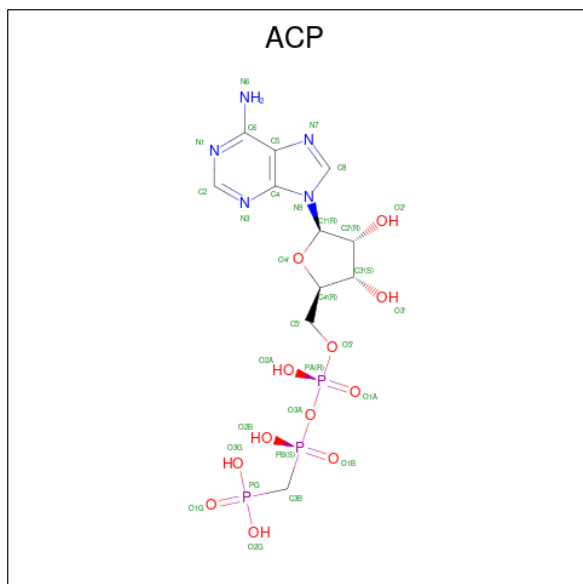
Mol	Chain	Residues	Atoms		ZeroOcc	AltConf
2	A	1	Total 1	Mg 1	0	0
2	B	1	Total 1	Mg 1	0	0

- Molecule 3 is 3-[(3-CHOLAMIDOPROPYL)DIMETHYLAMMONIO]-1-PROPANESULFONATE (three-letter code: CPS) (formula: C₃₂H₅₈N₂O₇S).



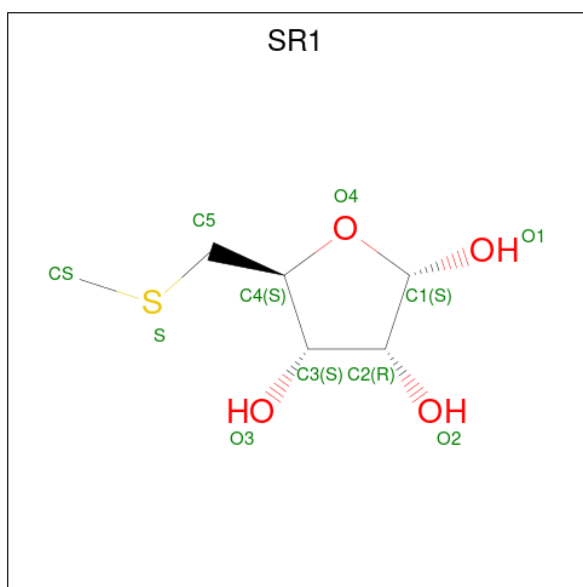
Mol	Chain	Residues	Atoms				ZeroOcc	AltConf
			Total	C	N	O		
3	A	1	29	24	1	4	0	0

- Molecule 4 is PHOSPHOMETHYLPHOSPHONIC ACID ADENYLATE ESTER (three-letter code: ACP) (formula: $C_{11}H_{18}N_5O_{12}P_3$).



Mol	Chain	Residues	Atoms					ZeroOcc	AltConf
			Total	C	N	O	P		
4	A	1	31	11	5	12	3	0	0
4	B	1	31	11	5	12	3	0	0

- Molecule 5 is 5-S-methyl-5-thio-alpha-D-ribofuranose (three-letter code: SR1) (formula: $C_6H_{12}O_4S$).



Mol	Chain	Residues	Atoms				ZeroOcc	AltConf
5	A	1	Total	C	O	S	0	0
			11	6	4	1		
5	B	1	Total	C	O	S	0	0
			11	6	4	1		

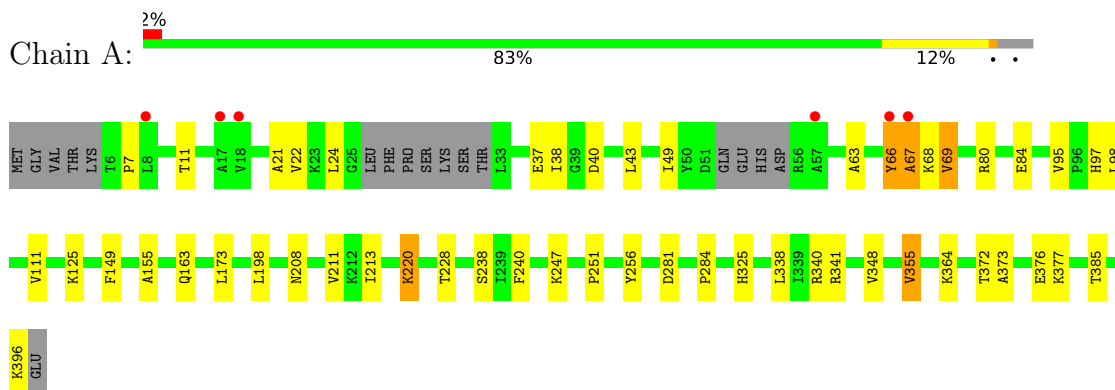
- Molecule 6 is water.

Mol	Chain	Residues	Atoms		ZeroOcc	AltConf
6	A	181	Total	O	0	0
			181	181		
6	B	166	Total	O	0	0
			166	166		

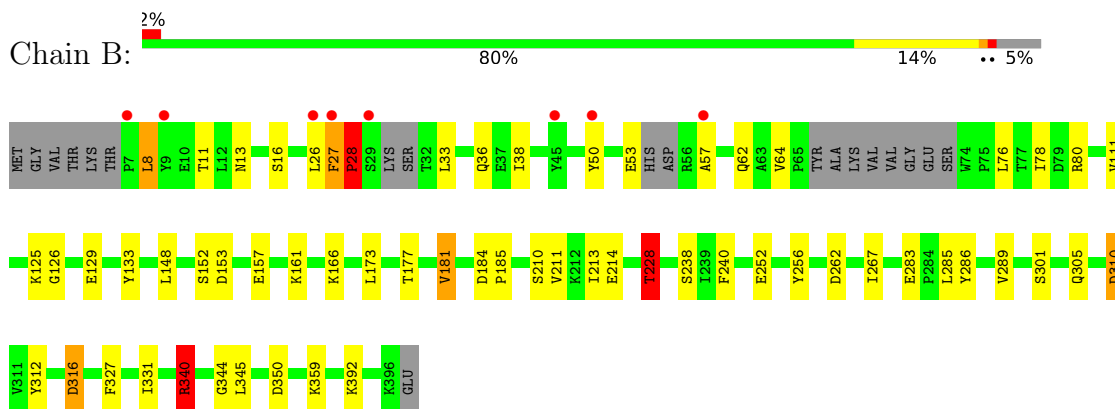
3 Residue-property plots [i](#)

These plots are drawn for all protein, RNA, DNA and oligosaccharide chains in the entry. The first graphic for a chain summarises the proportions of the various outlier classes displayed in the second graphic. The second graphic shows the sequence view annotated by issues in geometry and electron density. Residues are color-coded according to the number of geometric quality criteria for which they contain at least one outlier: green = 0, yellow = 1, orange = 2 and red = 3 or more. A red dot above a residue indicates a poor fit to the electron density ($RSRZ > 2$). Stretches of 2 or more consecutive residues without any outlier are shown as a green connector. Residues present in the sample, but not in the model, are shown in grey.

- Molecule 1: Methylthioribose kinase



- Molecule 1: Methylthioribose kinase



4 Data and refinement statistics

Property	Value	Source
Space group	P 21 21 2	Depositor
Cell constants a, b, c, α , β , γ	214.73Å 83.62Å 51.17Å 90.00° 90.00° 90.00°	Depositor
Resolution (Å)	51.17 – 2.30 51.17 – 2.30	Depositor EDS
% Data completeness (in resolution range)	99.2 (51.17-2.30) 99.3 (51.17-2.30)	Depositor EDS
R_{merge}	0.07	Depositor
R_{sym}	(Not available)	Depositor
$\langle I/\sigma(I) \rangle$ ¹	6.06 (at 2.29Å)	Xtrriage
Refinement program	REFMAC 5.2.0005	Depositor
R, R_{free}	0.202 , 0.255 0.201 , 0.253	Depositor DCC
R_{free} test set	2099 reflections (5.04%)	wwPDB-VP
Wilson B-factor (Å ²)	30.4	Xtrriage
Anisotropy	0.720	Xtrriage
Bulk solvent k_{sol} (e/Å ³), B_{sol} (Å ²)	0.35 , 45.9	EDS
L-test for twinning ²	$\langle L \rangle = 0.45$, $\langle L^2 \rangle = 0.28$	Xtrriage
Estimated twinning fraction	No twinning to report.	Xtrriage
F_o, F_c correlation	0.94	EDS
Total number of atoms	6399	wwPDB-VP
Average B, all atoms (Å ²)	32.0	wwPDB-VP

Xtrriage's analysis on translational NCS is as follows: *The largest off-origin peak in the Patterson function is 11.52% of the height of the origin peak. No significant pseudotranslation is detected.*

¹Intensities estimated from amplitudes.

²Theoretical values of $\langle |L| \rangle$, $\langle L^2 \rangle$ for acentric reflections are 0.5, 0.333 respectively for untwinned datasets, and 0.375, 0.2 for perfectly twinned datasets.

5 Model quality [i](#)

5.1 Standard geometry [i](#)

Bond lengths and bond angles in the following residue types are not validated in this section: SR1, ACP, MG, CPS

The Z score for a bond length (or angle) is the number of standard deviations the observed value is removed from the expected value. A bond length (or angle) with $|Z| > 5$ is considered an outlier worth inspection. RMSZ is the root-mean-square of all Z scores of the bond lengths (or angles).

Mol	Chain	Bond lengths		Bond angles	
		RMSZ	# Z >5	RMSZ	# Z >5
1	A	1.07	9/3035 (0.3%)	0.90	9/4122 (0.2%)
1	B	0.94	7/3036 (0.2%)	1.15	16/4121 (0.4%)
All	All	1.01	16/6071 (0.3%)	1.03	25/8243 (0.3%)

Chiral center outliers are detected by calculating the chiral volume of a chiral center and verifying if the center is modelled as a planar moiety or with the opposite hand. A planarity outlier is detected by checking planarity of atoms in a peptide group, atoms in a mainchain group or atoms of a sidechain that are expected to be planar.

Mol	Chain	#Chirality outliers	#Planarity outliers
1	B	0	4

All (16) bond length outliers are listed below:

Mol	Chain	Res	Type	Atoms	Z	Observed(Å)	Ideal(Å)
1	A	396	LYS	CE-NZ	-35.99	0.59	1.49
1	B	64	VAL	CB-CG1	-24.61	1.01	1.52
1	B	316	ASP	CG-OD2	24.39	1.81	1.25
1	A	355	VAL	CB-CG2	20.90	1.96	1.52
1	A	355	VAL	CB-CG1	-16.31	1.18	1.52
1	A	49	ILE	CB-CG2	-12.55	1.14	1.52
1	B	53	GLU	C-O	11.45	1.45	1.23
1	B	211	VAL	CB-CG2	8.67	1.71	1.52
1	A	38	ILE	CG1-CD1	-7.43	0.99	1.50
1	B	38	ILE	CB-CG2	-6.90	1.31	1.52
1	A	213	ILE	CG1-CD1	-6.51	1.05	1.50
1	A	22	VAL	CA-CB	-6.39	1.41	1.54
1	B	213	ILE	CG1-CD1	-6.04	1.08	1.50
1	A	125	LYS	CE-NZ	-5.55	1.35	1.49
1	A	37	GLU	CD-OE1	5.19	1.31	1.25
1	B	36	GLN	CA-CB	-5.00	1.43	1.53

All (25) bond angle outliers are listed below:

Mol	Chain	Res	Type	Atoms	Z	Observed(°)	Ideal(°)
1	B	316	ASP	CB-CG-OD2	-46.94	76.06	118.30
1	A	355	VAL	CA-CB-CG1	26.30	150.36	110.90
1	B	316	ASP	OD1-CG-OD2	-15.37	94.10	123.30
1	A	396	LYS	CD-CE-NZ	14.70	145.51	111.70
1	B	36	GLN	N-CA-CB	14.50	136.69	110.60
1	A	43	LEU	CB-CG-CD2	14.46	135.58	111.00
1	B	8	LEU	O-C-N	-14.26	99.88	122.70
1	A	355	VAL	O-C-N	11.36	142.69	121.10
1	A	355	VAL	CA-C-O	-9.94	99.22	120.10
1	B	340	ARG	NE-CZ-NH1	-9.53	115.53	120.30
1	B	8	LEU	CA-C-O	-9.38	100.41	120.10
1	A	22	VAL	CB-CA-C	9.34	129.14	111.40
1	B	211	VAL	CA-CB-CG2	-9.03	97.36	110.90
1	B	28	PRO	N-CA-CB	8.27	113.22	103.30
1	B	78	ILE	CB-CG1-CD1	8.13	136.67	113.90
1	B	38	ILE	CA-CB-CG2	-8.11	94.67	110.90
1	B	340	ARG	NE-CZ-NH2	7.03	123.82	120.30
1	A	22	VAL	N-CA-CB	-6.48	97.24	111.50
1	B	340	ARG	CG-CD-NE	-6.17	98.83	111.80
1	B	228	THR	CB-CA-C	-6.11	95.11	111.60
1	B	359	LYS	CD-CE-NZ	-5.17	99.80	111.70
1	B	211	VAL	CG1-CB-CG2	-5.16	102.64	110.90
1	A	7	PRO	N-CA-CB	5.13	109.45	103.30
1	A	355	VAL	CG1-CB-CG2	-5.09	102.75	110.90
1	B	166	LYS	CD-CE-NZ	-5.03	100.13	111.70

There are no chirality outliers.

All (4) planarity outliers are listed below:

Mol	Chain	Res	Type	Group
1	B	26	LEU	Peptide
1	B	27	PHE	Peptide
1	B	316	ASP	Sidechain
1	B	8	LEU	Mainchain

5.2 Too-close contacts [\(i\)](#)

In the following table, the Non-H and H(model) columns list the number of non-hydrogen atoms and hydrogen atoms in the chain respectively. The H(added) column lists the number of hydrogen atoms added and optimized by MolProbity. The Clashes column lists the number of clashes within

the asymmetric unit, whereas Symm-Clashes lists symmetry-related clashes.

Mol	Chain	Non-H	H(model)	H(added)	Clashes	Symm-Clashes
1	A	2967	0	2836	34	0
1	B	2970	0	2863	35	0
2	A	1	0	0	0	0
2	B	1	0	0	0	0
3	A	29	0	38	0	0
4	A	31	0	14	1	0
4	B	31	0	14	1	0
5	A	11	0	0	0	0
5	B	11	0	0	1	0
6	A	181	0	0	8	0
6	B	166	0	0	5	0
All	All	6399	0	5765	69	0

The all-atom clashscore is defined as the number of clashes found per 1000 atoms (including hydrogen atoms). The all-atom clashscore for this structure is 6.

All (69) close contacts within the same asymmetric unit are listed below, sorted by their clash magnitude.

Atom-1	Atom-2	Interatomic distance (Å)	Clash overlap (Å)
1:A:67:ALA:H	1:A:68:LYS:HA	1.02	1.10
1:A:66:TYR:HB3	1:A:67:ALA:HB2	1.26	1.08
1:A:67:ALA:N	1:A:68:LYS:HA	1.72	0.98
1:A:67:ALA:H	1:A:68:LYS:CA	1.81	0.94
1:B:148:LEU:O	1:B:228:THR:HG21	1.68	0.93
1:A:66:TYR:CB	1:A:67:ALA:HB2	2.02	0.89
1:A:21:ALA:O	1:A:24:LEU:O	2.03	0.76
1:A:66:TYR:HB3	1:A:67:ALA:CB	2.14	0.73
1:A:325:HIS:HE1	6:A:1068:HOH:O	1.69	0.73
1:B:301:SER:O	1:B:305:GLN:HG2	1.91	0.70
1:A:247:LYS:HE3	6:A:1018:HOH:O	1.91	0.70
1:A:69:VAL:CB	6:A:1022:HOH:O	2.41	0.68
1:A:66:TYR:O	1:A:69:VAL:CB	2.40	0.68
1:B:148:LEU:O	1:B:228:THR:CG2	2.40	0.68
1:B:310:ASP:OD2	1:B:312:TYR:HB2	1.97	0.64
6:A:1118:HOH:O	1:B:310:ASP:HB2	1.99	0.62
1:A:149:PHE:CE2	1:A:155:ALA:HB2	2.37	0.60
1:B:152:SER:HB3	1:B:228:THR:HG23	1.84	0.59
1:B:340:ARG:NH1	5:B:998:SR1:O3	2.36	0.58
1:A:97:HIS:H	1:A:97:HIS:CD2	2.25	0.55
1:B:181:VAL:HA	1:B:340:ARG:HG3	1.88	0.54

Continued on next page...

Continued from previous page...

Atom-1	Atom-2	Interatomic distance (Å)	Clash overlap (Å)
1:B:210:SER:O	1:B:214:GLU:HG2	2.07	0.54
1:A:66:TYR:CA	1:A:67:ALA:CB	2.87	0.53
1:A:63:ALA:HB2	6:A:1040:HOH:O	2.09	0.53
1:A:373:ALA:O	1:A:377:LYS:HB2	2.11	0.51
1:B:240:PHE:HZ	4:B:999:ACP:H2'	1.75	0.51
1:B:125:LYS:O	1:B:129:GLU:HG3	2.11	0.51
1:A:163:GLN:HG2	6:A:1070:HOH:O	2.12	0.50
1:B:285:LEU:O	1:B:289:VAL:HG23	2.11	0.50
1:A:247:LYS:CE	6:A:1018:HOH:O	2.55	0.49
1:B:177:THR:HG23	1:B:181:VAL:CG1	2.42	0.49
1:A:66:TYR:CB	1:A:67:ALA:CB	2.84	0.49
1:A:67:ALA:N	1:A:68:LYS:CA	2.50	0.49
1:A:228:THR:O	1:A:256:TYR:HA	2.12	0.49
1:A:341:ARG:HD2	1:A:348:VAL:HG13	1.95	0.49
1:A:95:VAL:HB	1:A:98:LEU:HD12	1.96	0.48
1:B:76:LEU:HD13	1:B:80:ARG:HD3	1.95	0.48
1:B:283:GLU:HG2	6:B:1054:HOH:O	2.14	0.47
1:B:27:PHE:HA	1:B:28:PRO:CB	2.45	0.47
1:A:198:LEU:HD11	1:A:364:LYS:HB3	1.97	0.47
1:B:173:LEU:CD1	1:B:252:GLU:O	2.64	0.46
1:B:62:GLN:HG3	1:B:111:VAL:HG23	1.97	0.46
1:B:13:ASN:H	1:B:16:SER:HB3	1.81	0.45
1:B:228:THR:O	1:B:256:TYR:HA	2.16	0.45
1:B:344:GLY:HA3	6:B:1052:HOH:O	2.16	0.45
1:B:27:PHE:CA	1:B:28:PRO:CB	2.95	0.45
1:B:126:GLY:HA3	1:B:133:TYR:OH	2.17	0.45
1:A:220:LYS:HE2	6:A:1046:HOH:O	2.17	0.45
1:A:84:GLU:HG3	1:A:251:PRO:HD2	2.00	0.44
1:B:262:ASP:HA	6:B:1007:HOH:O	2.17	0.44
1:B:157:GLU:HB3	6:B:1088:HOH:O	2.17	0.44
1:B:392:LYS:NZ	6:B:1028:HOH:O	2.50	0.44
1:A:80:ARG:HB3	1:A:173:LEU:HD21	2.00	0.43
1:A:66:TYR:CA	1:A:67:ALA:HB2	2.48	0.43
1:B:177:THR:HG23	1:B:181:VAL:HG13	2.00	0.43
1:A:66:TYR:N	1:A:67:ALA:HB3	2.34	0.43
1:B:50:TYR:HD1	1:B:57:ALA:HB2	1.83	0.42
1:B:286:TYR:CD1	1:B:392:LYS:HE2	2.53	0.42
1:A:211:VAL:HG11	1:A:372:THR:HG23	2.01	0.42
1:B:13:ASN:OD1	1:B:16:SER:HB2	2.20	0.42
1:B:267:ILE:HG23	1:B:289:VAL:HG13	2.02	0.42
1:A:211:VAL:HG12	1:A:376:GLU:CG	2.50	0.41

Continued on next page...

Continued from previous page...

Atom-1	Atom-2	Interatomic distance (Å)	Clash overlap (Å)
1:A:208:ASN:ND2	1:A:211:VAL:HG13	2.35	0.41
1:B:327:PHE:O	1:B:331:ILE:HG12	2.20	0.41
1:B:177:THR:CG2	1:B:181:VAL:HG13	2.50	0.41
1:A:240:PHE:HZ	4:A:999:ACP:H2'	1.86	0.41
1:B:153:ASP:OD2	1:B:161:LYS:HE3	2.21	0.41
1:B:184:ASP:N	1:B:185:PRO:CD	2.84	0.40
1:A:281:ASP:O	1:A:284:PRO:HD2	2.22	0.40

There are no symmetry-related clashes.

5.3 Torsion angles [i](#)

5.3.1 Protein backbone [i](#)

In the following table, the Percentiles column shows the percent Ramachandran outliers of the chain as a percentile score with respect to all X-ray entries followed by that with respect to entries of similar resolution.

The Analysed column shows the number of residues for which the backbone conformation was analysed, and the total number of residues.

Mol	Chain	Analysed	Favoured	Allowed	Outliers	Percentiles	
1	A	374/397 (94%)	365 (98%)	6 (2%)	3 (1%)	19	23
1	B	370/397 (93%)	363 (98%)	6 (2%)	1 (0%)	41	50
All	All	744/794 (94%)	728 (98%)	12 (2%)	4 (0%)	29	35

All (4) Ramachandran outliers are listed below:

Mol	Chain	Res	Type
1	A	67	ALA
1	B	28	PRO
1	A	69	VAL
1	A	66	TYR

5.3.2 Protein sidechains [i](#)

In the following table, the Percentiles column shows the percent sidechain outliers of the chain as a percentile score with respect to all X-ray entries followed by that with respect to entries of similar resolution.

The Analysed column shows the number of residues for which the sidechain conformation was analysed, and the total number of residues.

Mol	Chain	Analysed	Rotameric	Outliers	Percentiles	
1	A	307/348 (88%)	298 (97%)	9 (3%)	42	58
1	B	312/348 (90%)	303 (97%)	9 (3%)	42	58
All	All	619/696 (89%)	601 (97%)	18 (3%)	42	58

All (18) residues with a non-rotameric sidechain are listed below:

Mol	Chain	Res	Type
1	A	11	THR
1	A	40	ASP
1	A	111	VAL
1	A	220	LYS
1	A	238	SER
1	A	338	LEU
1	A	340	ARG
1	A	355	VAL
1	A	385	THR
1	B	11	THR
1	B	33	LEU
1	B	181	VAL
1	B	228	THR
1	B	238	SER
1	B	310	ASP
1	B	340	ARG
1	B	345	LEU
1	B	350	ASP

Sometimes sidechains can be flipped to improve hydrogen bonding and reduce clashes. All (3) such sidechains are listed below:

Mol	Chain	Res	Type
1	A	97	HIS
1	A	325	HIS
1	B	325	HIS

5.3.3 RNA [i](#)

There are no RNA molecules in this entry.

5.4 Non-standard residues in protein, DNA, RNA chains [i](#)

There are no non-standard protein/DNA/RNA residues in this entry.

5.5 Carbohydrates [i](#)

There are no monosaccharides in this entry.

5.6 Ligand geometry [i](#)

Of 7 ligands modelled in this entry, 2 are monoatomic - leaving 5 for Mogul analysis.

In the following table, the Counts columns list the number of bonds (or angles) for which Mogul statistics could be retrieved, the number of bonds (or angles) that are observed in the model and the number of bonds (or angles) that are defined in the Chemical Component Dictionary. The Link column lists molecule types, if any, to which the group is linked. The Z score for a bond length (or angle) is the number of standard deviations the observed value is removed from the expected value. A bond length (or angle) with $|Z| > 2$ is considered an outlier worth inspection. RMSZ is the root-mean-square of all Z scores of the bond lengths (or angles).

Mol	Type	Chain	Res	Link	Bond lengths			Bond angles		
					Counts	RMSZ	# Z > 2	Counts	RMSZ	# Z > 2
3	CPS	A	777	-	32,32,45	3.28	12 (37%)	51,51,70	4.08	34 (66%)
4	ACP	B	999	2	27,33,33	1.36	4 (14%)	32,52,52	1.72	7 (21%)
5	SR1	B	998	-	11,11,11	0.92	1 (9%)	14,15,15	0.66	0
4	ACP	A	999	2	27,33,33	1.17	2 (7%)	32,52,52	1.61	7 (21%)
5	SR1	A	998	-	11,11,11	1.00	1 (9%)	14,15,15	0.99	1 (7%)

In the following table, the Chirals column lists the number of chiral outliers, the number of chiral centers analysed, the number of these observed in the model and the number defined in the Chemical Component Dictionary. Similar counts are reported in the Torsion and Rings columns. '-' means no outliers of that kind were identified.

Mol	Type	Chain	Res	Link	Chirals	Torsions	Rings
3	CPS	A	777	-	1/1/12/15	6/9/74/90	0/4/4/4
4	ACP	B	999	2	-	1/15/38/38	0/3/3/3
5	SR1	B	998	-	-	0/3/19/19	0/1/1/1
4	ACP	A	999	2	-	1/15/38/38	0/3/3/3
5	SR1	A	998	-	-	1/3/19/19	0/1/1/1

All (20) bond length outliers are listed below:

Mol	Chain	Res	Type	Atoms	Z	Observed(Å)	Ideal(Å)
3	A	777	CPS	C18-C19	9.30	1.72	1.53
3	A	777	CPS	C18-C17	7.06	1.65	1.53
3	A	777	CPS	C5-C9	-6.14	1.45	1.55
3	A	777	CPS	C3-C4	5.82	1.63	1.53
3	A	777	CPS	C8-C9	5.16	1.65	1.54
3	A	777	CPS	C14-C15	4.24	1.60	1.53
3	A	777	CPS	C20-C9	3.90	1.61	1.54
4	B	999	ACP	C2-N1	3.58	1.40	1.33
3	A	777	CPS	C16-C15	-3.55	1.48	1.53
3	A	777	CPS	C11-C2	3.45	1.60	1.54
3	A	777	CPS	C10-C5	3.35	1.59	1.54
3	A	777	CPS	C8-C7	3.28	1.63	1.54
3	A	777	CPS	C14-C13	3.28	1.57	1.51
4	A	999	ACP	C2-N1	3.21	1.39	1.33
5	A	998	SR1	C5-S	-2.71	1.77	1.80
4	B	999	ACP	O4'-C1'	2.44	1.44	1.41
4	B	999	ACP	PB-O2B	-2.35	1.50	1.56
4	A	999	ACP	PB-O2B	-2.20	1.51	1.56
5	B	998	SR1	C5-S	-2.00	1.78	1.80
4	B	999	ACP	C2'-C1'	2.00	1.56	1.53

All (49) bond angle outliers are listed below:

Mol	Chain	Res	Type	Atoms	Z	Observed(°)	Ideal(°)
3	A	777	CPS	C6-C18-C17	11.48	127.03	111.81
3	A	777	CPS	C5-C9-C20	9.61	130.97	119.50
3	A	777	CPS	C19-C18-C17	-9.00	101.11	111.88
3	A	777	CPS	C9-C5-C4	8.14	125.09	117.67
3	A	777	CPS	C2-C19-C18	7.89	120.29	111.82
3	A	777	CPS	C8-C9-C5	6.39	109.82	103.55
3	A	777	CPS	C15-C16-C17	5.44	120.46	114.46
3	A	777	CPS	C16-C17-C18	5.33	117.17	111.48
3	A	777	CPS	C19-C3-C4	5.20	121.16	114.30
3	A	777	CPS	C5-C6-C18	5.14	121.31	114.74
3	A	777	CPS	C8-C9-C20	4.52	119.14	112.15
3	A	777	CPS	C9-C5-C6	4.47	104.60	100.09
3	A	777	CPS	C7-C6-C5	4.43	107.90	103.55
3	A	777	CPS	C1-C12-C13	4.22	115.88	110.47
4	B	999	ACP	O1G-PG-C3B	-4.07	102.46	111.24
3	A	777	CPS	C10-C5-C9	-3.93	105.06	111.21
3	A	777	CPS	C14-C15-C2	3.89	116.78	112.66
3	A	777	CPS	C16-C15-C14	-3.86	106.75	111.19
4	A	999	ACP	N3-C2-N1	-3.74	122.83	128.68

Continued on next page...

Continued from previous page...

Mol	Chain	Res	Type	Atoms	Z	Observed(°)	Ideal(°)
3	A	777	CPS	C7-C6-C18	-3.67	113.20	118.33
3	A	777	CPS	O4-C4-C3	-3.64	101.70	109.12
4	A	999	ACP	C5-C6-N6	3.59	125.81	120.35
3	A	777	CPS	C22-C20-C9	3.38	117.28	110.28
4	B	999	ACP	N3-C2-N1	-3.30	123.52	128.68
4	B	999	ACP	C5-C6-N1	-3.16	113.19	120.35
4	A	999	ACP	O4'-C1'-C2'	-3.12	102.36	106.93
4	A	999	ACP	C2-N1-C6	3.02	123.92	118.75
3	A	777	CPS	C11-C2-C1	2.95	113.01	108.26
3	A	777	CPS	C10-C5-C6	-2.93	106.63	111.21
4	B	999	ACP	C5-C6-N6	2.92	124.80	120.35
4	B	999	ACP	C2-N1-C6	2.90	123.71	118.75
4	A	999	ACP	C5-C6-N1	-2.80	114.00	120.35
4	B	999	ACP	O4'-C1'-C2'	-2.78	102.86	106.93
5	A	998	SR1	CS-S-C5	2.68	106.23	101.30
3	A	777	CPS	C19-C2-C15	-2.62	104.90	108.58
3	A	777	CPS	C21-C20-C22	-2.57	106.34	110.36
3	A	777	CPS	C10-C5-C4	-2.50	106.52	109.07
4	B	999	ACP	C4-C5-N7	2.49	112.00	109.40
3	A	777	CPS	C7-C8-C9	-2.47	100.24	105.13
3	A	777	CPS	O3-C17-C18	-2.44	103.97	109.43
3	A	777	CPS	C12-C1-C2	2.41	116.91	112.78
3	A	777	CPS	C8-C7-C6	-2.27	100.64	105.13
3	A	777	CPS	C22-C23-C24	2.26	120.24	112.59
3	A	777	CPS	C3-C4-C5	-2.21	108.98	111.24
3	A	777	CPS	O1-C24-N1	-2.20	116.51	122.50
3	A	777	CPS	O2-C13-C12	2.17	115.68	110.16
3	A	777	CPS	C3-C19-C18	-2.12	107.78	110.88
4	A	999	ACP	O3'-C3'-C2'	2.08	118.56	111.82
4	A	999	ACP	C4-C5-N7	2.04	111.53	109.40

All (1) chirality outliers are listed below:

Mol	Chain	Res	Type	Atom
3	A	777	CPS	C9

All (9) torsion outliers are listed below:

Mol	Chain	Res	Type	Atoms
4	A	999	ACP	PG-C3B-PB-O1B
3	A	777	CPS	C21-C20-C9-C5
3	A	777	CPS	C21-C20-C22-C23

Continued on next page...

Continued from previous page...

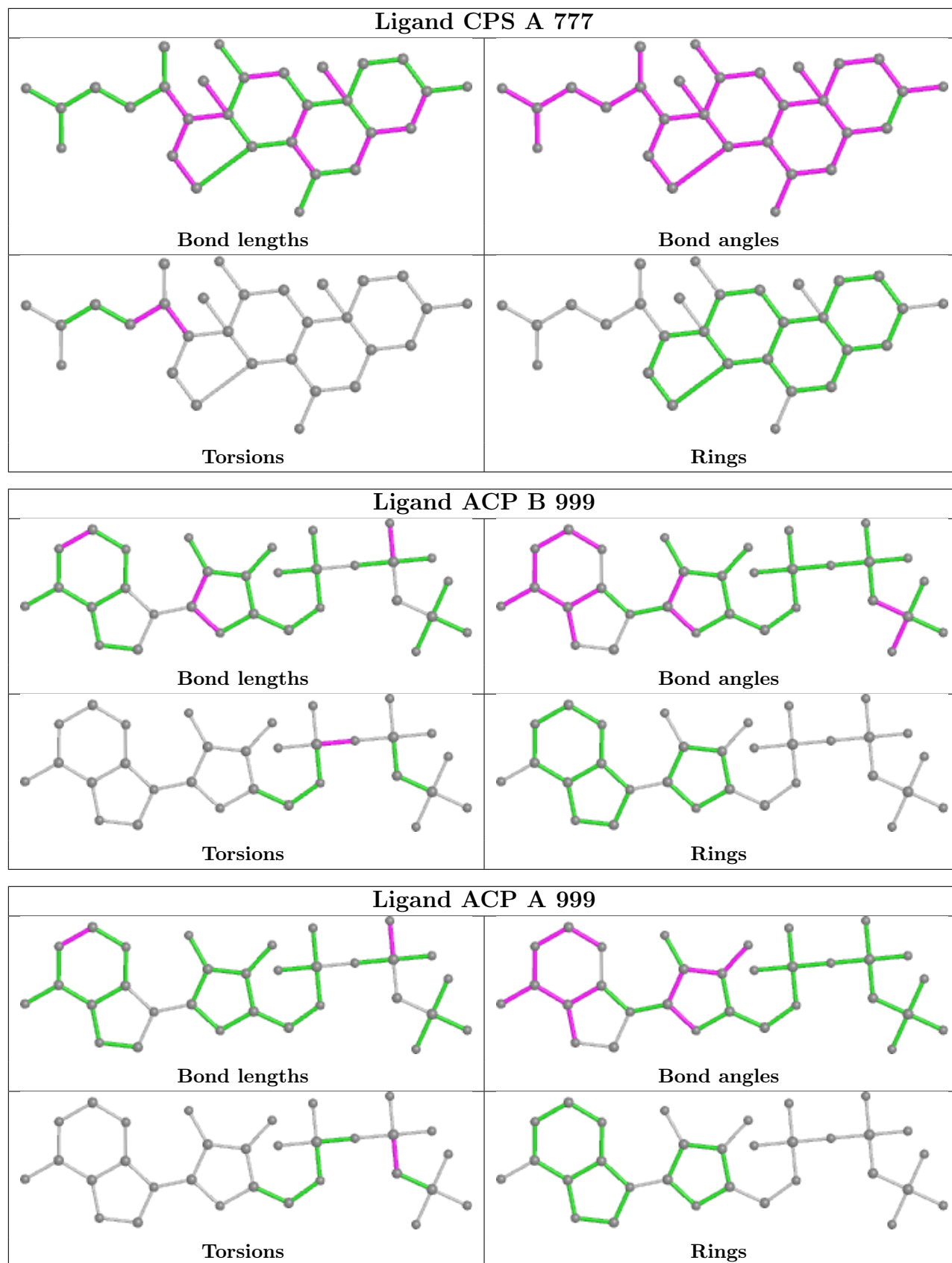
Mol	Chain	Res	Type	Atoms
3	A	777	CPS	C9-C20-C22-C23
3	A	777	CPS	C22-C20-C9-C8
3	A	777	CPS	C21-C20-C9-C8
5	A	998	SR1	C4-C5-S-CS
4	B	999	ACP	PB-O3A-PA-O1A
3	A	777	CPS	C22-C20-C9-C5

There are no ring outliers.

3 monomers are involved in 3 short contacts:

Mol	Chain	Res	Type	Clashes	Symm-Clashes
4	B	999	ACP	1	0
5	B	998	SR1	1	0
4	A	999	ACP	1	0

The following is a two-dimensional graphical depiction of Mogul quality analysis of bond lengths, bond angles, torsion angles, and ring geometry for all instances of the Ligand of Interest. In addition, ligands with molecular weight > 250 and outliers as shown on the validation Tables will also be included. For torsion angles, if less than 5% of the Mogul distribution of torsion angles is within 10 degrees of the torsion angle in question, then that torsion angle is considered an outlier. Any bond that is central to one or more torsion angles identified as an outlier by Mogul will be highlighted in the graph. For rings, the root-mean-square deviation (RMSD) between the ring in question and similar rings identified by Mogul is calculated over all ring torsion angles. If the average RMSD is greater than 60 degrees and the minimal RMSD between the ring in question and any Mogul-identified rings is also greater than 60 degrees, then that ring is considered an outlier. The outliers are highlighted in purple. The color gray indicates Mogul did not find sufficient equivalents in the CSD to analyse the geometry.



5.7 Other polymers [i](#)

There are no such residues in this entry.

5.8 Polymer linkage issues [i](#)

There are no chain breaks in this entry.

6 Fit of model and data [i](#)

6.1 Protein, DNA and RNA chains [i](#)

In the following table, the column labelled ‘#RSRZ > 2’ contains the number (and percentage) of RSRZ outliers, followed by percent RSRZ outliers for the chain as percentile scores relative to all X-ray entries and entries of similar resolution. The OWAB column contains the minimum, median, 95th percentile and maximum values of the occupancy-weighted average B-factor per residue. The column labelled ‘Q < 0.9’ lists the number of (and percentage) of residues with an average occupancy less than 0.9.

Mol	Chain	Analysed	<RSRZ>	#RSRZ>2	OWAB(Å ²)	Q<0.9
1	A	380/397 (95%)	0.07	6 (1%) 72 77	25, 31, 41, 49	9 (2%)
1	B	378/397 (95%)	0.04	8 (2%) 63 70	25, 31, 42, 47	12 (3%)
All	All	758/794 (95%)	0.06	14 (1%) 68 74	25, 31, 42, 49	21 (2%)

All (14) RSRZ outliers are listed below:

Mol	Chain	Res	Type	RSRZ
1	B	7	PRO	4.2
1	A	67	ALA	4.1
1	B	9	TYR	3.7
1	B	26	LEU	3.4
1	B	45	TYR	3.4
1	A	66	TYR	3.3
1	B	57	ALA	3.1
1	A	57	ALA	3.0
1	B	50	TYR	2.9
1	A	8	LEU	2.4
1	A	17	ALA	2.3
1	B	27	PHE	2.1
1	B	29	SER	2.1
1	A	18	VAL	2.1

6.2 Non-standard residues in protein, DNA, RNA chains [i](#)

There are no non-standard protein/DNA/RNA residues in this entry.

6.3 Carbohydrates [i](#)

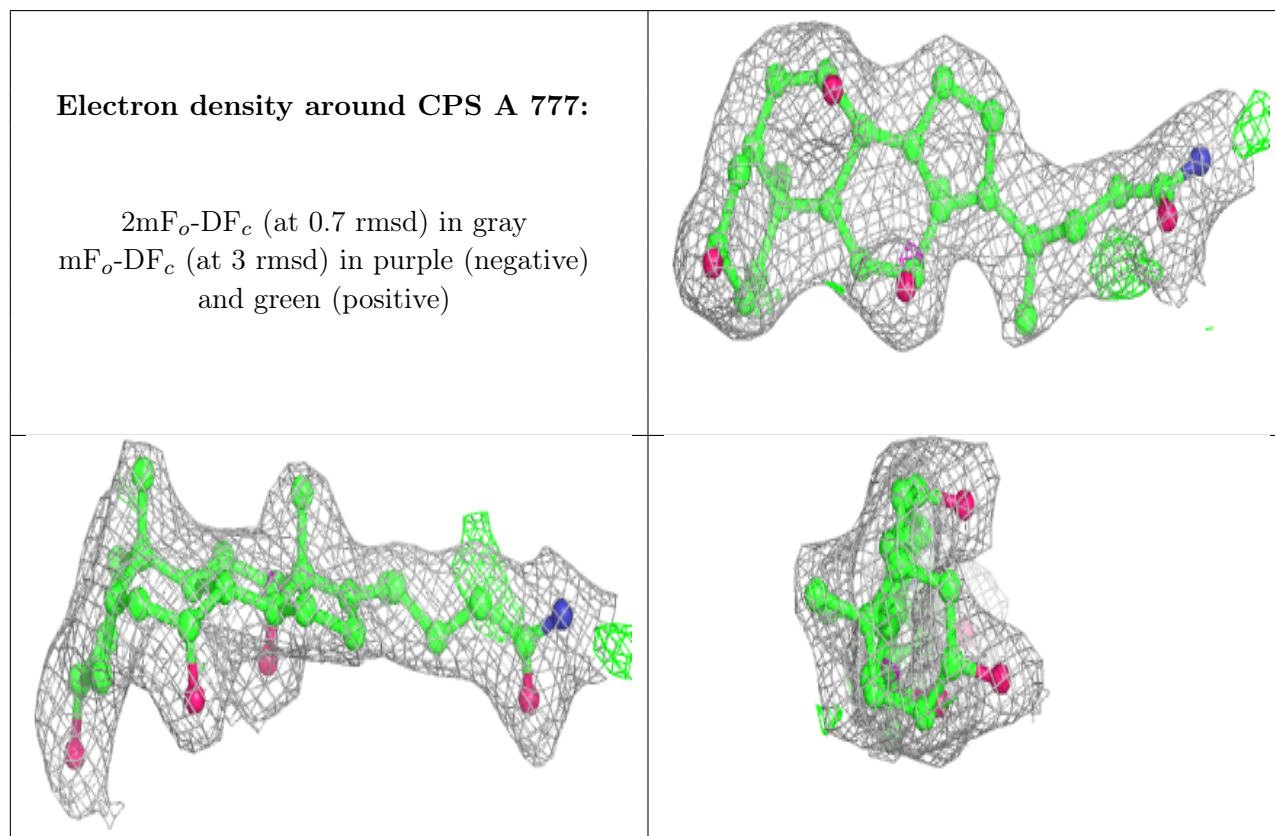
There are no monosaccharides in this entry.

6.4 Ligands [i](#)

In the following table, the Atoms column lists the number of modelled atoms in the group and the number defined in the chemical component dictionary. The B-factors column lists the minimum, median, 95th percentile and maximum values of B factors of atoms in the group. The column labelled 'Q< 0.9' lists the number of atoms with occupancy less than 0.9.

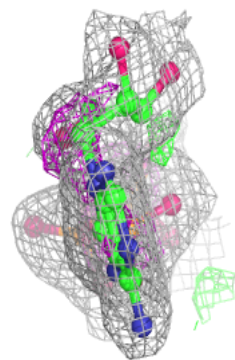
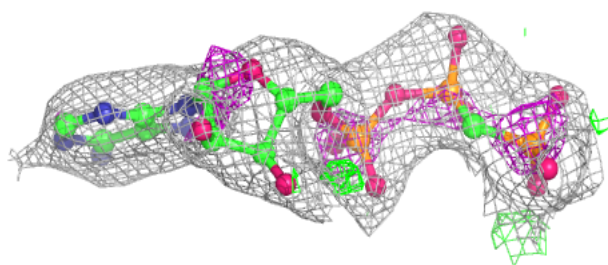
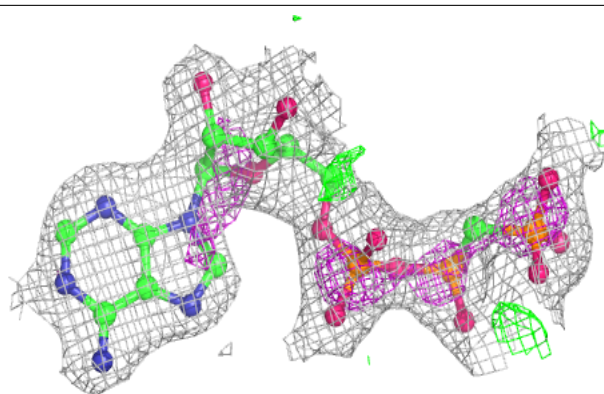
Mol	Type	Chain	Res	Atoms	RSCC	RSR	B-factors(Å ²)	Q<0.9
2	MG	B	401	1/1	0.85	0.06	47,47,47,47	0
2	MG	A	401	1/1	0.92	0.06	39,39,39,39	0
3	CPS	A	777	29/42	0.92	0.18	33,35,45,47	0
4	ACP	B	999	31/31	0.93	0.19	39,45,55,56	0
4	ACP	A	999	31/31	0.96	0.14	29,33,37,39	0
5	SR1	B	998	11/11	0.97	0.14	18,26,29,31	0
5	SR1	A	998	11/11	0.98	0.07	24,25,26,31	0

The following is a graphical depiction of the model fit to experimental electron density of all instances of the Ligand of Interest. In addition, ligands with molecular weight > 250 and outliers as shown on the geometry validation Tables will also be included. Each fit is shown from different orientation to approximate a three-dimensional view.

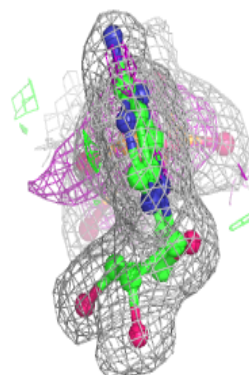
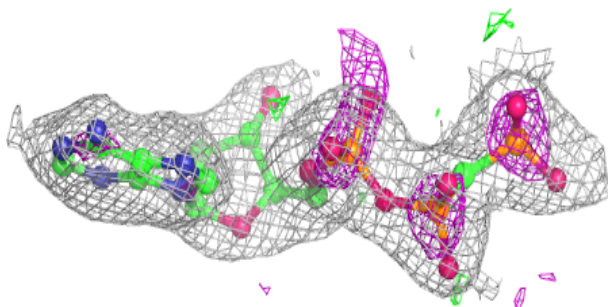
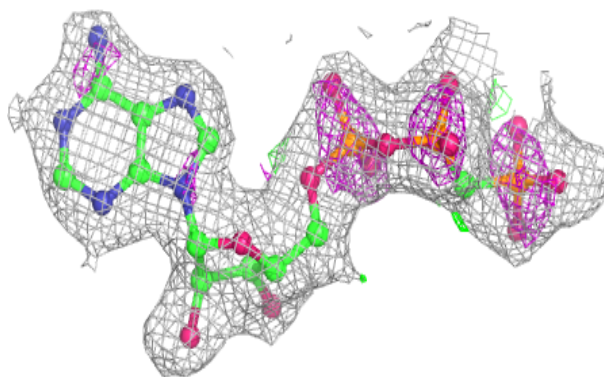


Electron density around ACP B 999:

$2mF_o-DF_c$ (at 0.7 rmsd) in gray
 mF_o-DF_c (at 3 rmsd) in purple (negative)
and green (positive)

**Electron density around ACP A 999:**

$2mF_o-DF_c$ (at 0.7 rmsd) in gray
 mF_o-DF_c (at 3 rmsd) in purple (negative)
and green (positive)



6.5 Other polymers [i](#)

There are no such residues in this entry.