



Full wwPDB X-ray Structure Validation Report ⓘ

Mar 28, 2022 – 04:18 pm BST

PDB ID : 7PVJ
Title : Crystal structure of Thioredoxin Reductase from *Brugia Malayi* in complex with auranofin
Authors : Fata, F.; Ardini, M.; Silvestri, I.; Gabriele, F.; Ippoliti, R.; Gencheva, R.; Cheng, Q.; Arner, E.S.J.; Angelucci, F.; Williams, D.L.
Deposited on : 2021-10-04
Resolution : 3.10 Å(reported)

This is a Full wwPDB X-ray Structure Validation Report for a publicly released PDB entry.

We welcome your comments at validation@mail.wwpdb.org

A user guide is available at

<https://www.wwpdb.org/validation/2017/XrayValidationReportHelp>

with specific help available everywhere you see the ⓘ symbol.

The following versions of software and data (see [references ⓘ](#)) were used in the production of this report:

MolProbity : 4.02b-467
Mogul : 1.8.4, CSD as541be (2020)
Xtriage (Phenix) : 1.13
EDS : 2.27
buster-report : 1.1.7 (2018)
Percentile statistics : 20191225.v01 (using entries in the PDB archive December 25th 2019)
Refmac : 5.8.0267
CCP4 : 7.1.010 (Gargrove)
Ideal geometry (proteins) : Engh & Huber (2001)
Ideal geometry (DNA, RNA) : Parkinson et al. (1996)
Validation Pipeline (wwPDB-VP) : 2.27

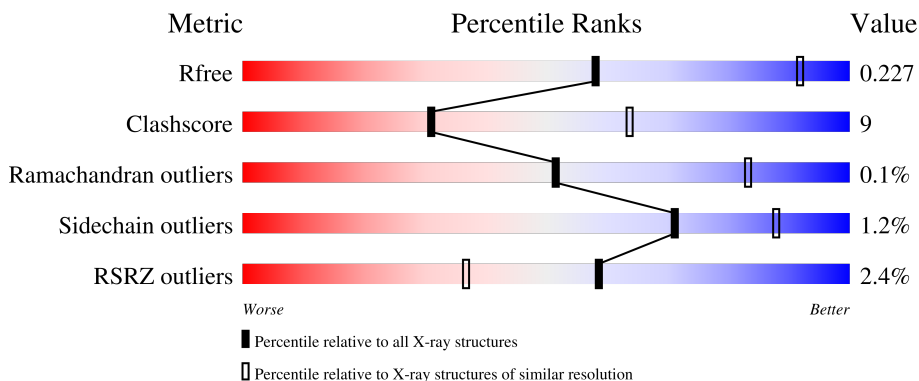
1 Overall quality at a glance

The following experimental techniques were used to determine the structure:

X-RAY DIFFRACTION

The reported resolution of this entry is 3.10 Å.

Percentile scores (ranging between 0-100) for global validation metrics of the entry are shown in the following graphic. The table shows the number of entries on which the scores are based.



Metric	Whole archive (#Entries)	Similar resolution (#Entries, resolution range(Å))
R_{free}	130704	1094 (3.10-3.10)
Clashscore	141614	1184 (3.10-3.10)
Ramachandran outliers	138981	1141 (3.10-3.10)
Sidechain outliers	138945	1141 (3.10-3.10)
RSRZ outliers	127900	1067 (3.10-3.10)

The table below summarises the geometric issues observed across the polymeric chains and their fit to the electron density. The red, orange, yellow and green segments of the lower bar indicate the fraction of residues that contain outliers for ≥ 3 , 2, 1 and 0 types of geometric quality criteria respectively. A grey segment represents the fraction of residues that are not modelled. The numeric value for each fraction is indicated below the corresponding segment, with a dot representing fractions $\leq 5\%$. The upper red bar (where present) indicates the fraction of residues that have poor fit to the electron density. The numeric value is given above the bar.

Mol	Chain	Length	Quality of chain
1	A	598	
1	B	598	
1	C	598	

The following table lists non-polymeric compounds, carbohydrate monomers and non-standard residues in protein, DNA, RNA chains that are outliers for geometric or electron-density-fit criteria:

Mol	Type	Chain	Res	Chirality	Geometry	Clashes	Electron density
3	ATR	A	602	-	-	-	X

2 Entry composition [i](#)

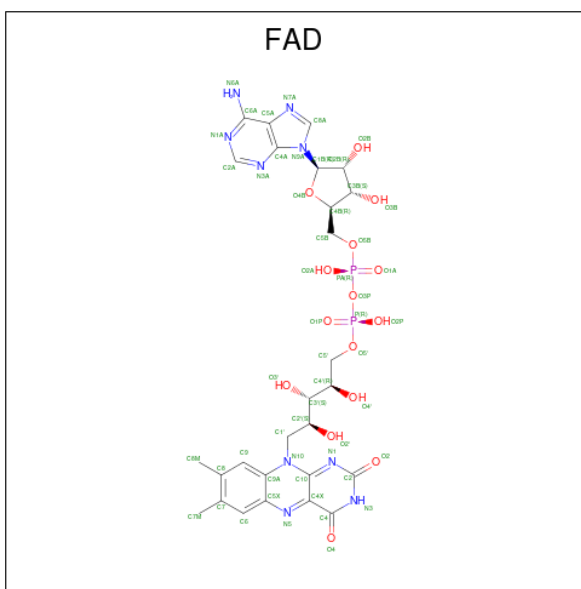
There are 6 unique types of molecules in this entry. The entry contains 13416 atoms, of which 0 are hydrogens and 0 are deuteriums.

In the tables below, the ZeroOcc column contains the number of atoms modelled with zero occupancy, the AltConf column contains the number of residues with at least one atom in alternate conformation and the Trace column contains the number of residues modelled with at most 2 atoms.

- Molecule 1 is a protein called Glutaredoxin domain-containing protein.

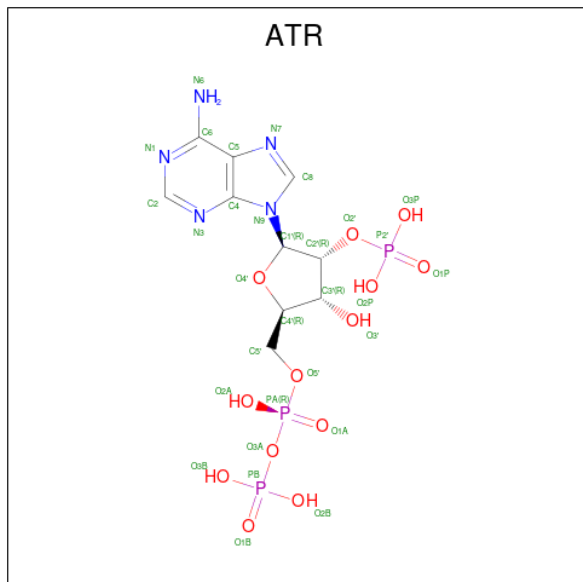
Mol	Chain	Residues	Atoms					ZeroOcc	AltConf	Trace
			Total	C	N	O	S			
1	A	577	Total	C	N	O	S	0	0	0
			4484	2861	752	842	29			
1	B	577	Total	C	N	O	S	0	0	0
			4482	2860	752	841	29			
1	C	541	Total	C	N	O	S	0	0	0
			4218	2698	711	782	27			

- Molecule 2 is FLAVIN-ADENINE DINUCLEOTIDE (three-letter code: FAD) (formula: $C_{27}H_{33}N_9O_{15}P_2$).



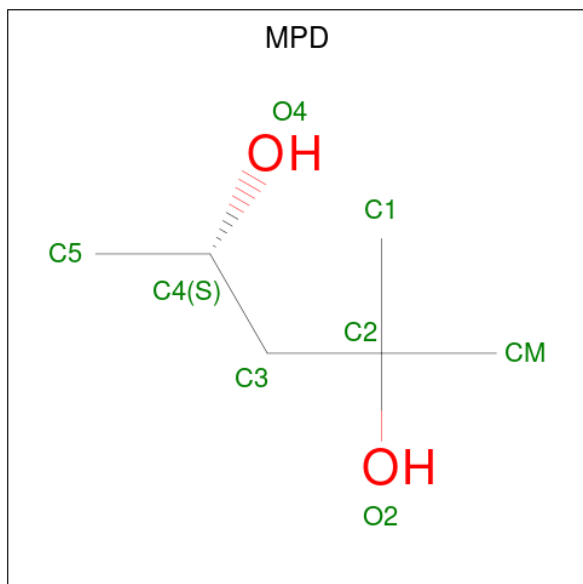
Mol	Chain	Residues	Atoms				ZeroOcc	AltConf	
			Total	C	N	O			P
2	A	1	Total	C	N	O	P	0	0
			53	27	9	15	2		
2	B	1	Total	C	N	O	P	0	0
			53	27	9	15	2		
2	C	1	Total	C	N	O	P	0	0
			53	27	9	15	2		

- Molecule 3 is 2'-MONOPHOSPHOADENOSINE-5'-DIPHOSPHATE (three-letter code: ATR) (formula: $C_{10}H_{16}N_5O_{13}P_3$).



Mol	Chain	Residues	Atoms					ZeroOcc	AltConf
			Total	C	N	O	P		
3	A	1	31	10	5	13	3	0	0

- Molecule 4 is (4S)-2-METHYL-2,4-PENTANEDIOL (three-letter code: MPD) (formula: $C_6H_{14}O_2$).



Mol	Chain	Residues	Atoms			ZeroOcc	AltConf
			Total	C	O		
4	A	1	8	6	2	0	0

Continued on next page...

Continued from previous page...

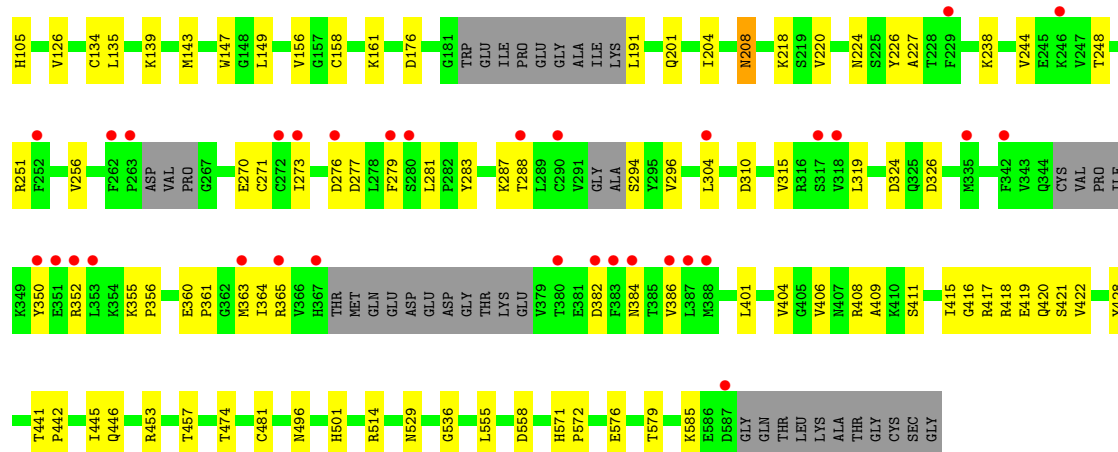
Mol	Chain	Residues	Atoms	ZeroOcc	AltConf
4	A	1	Total C O 8 6 2	0	0
4	B	1	Total C O 8 6 2	0	0
4	B	1	Total C O 8 6 2	0	0
4	B	1	Total C O 8 6 2	0	0

- Molecule 5 is SODIUM ION (three-letter code: NA) (formula: Na).

Mol	Chain	Residues	Atoms	ZeroOcc	AltConf
5	A	1	Total Na 1 1	0	0

- Molecule 6 is GOLD ION (three-letter code: AU) (formula: Au) (labeled as "Ligand of Interest" by depositor).

Mol	Chain	Residues	Atoms	ZeroOcc	AltConf
6	B	1	Total Au 1 1	0	0



4 Data and refinement statistics

Property	Value	Source
Space group	C 2 2 21	Depositor
Cell constants a, b, c, α , β , γ	147.33Å 261.66Å 130.29Å 90.00° 90.00° 90.00°	Depositor
Resolution (Å)	49.36 – 3.10 49.31 – 3.10	Depositor EDS
% Data completeness (in resolution range)	99.9 (49.36-3.10) 100.0 (49.31-3.10)	Depositor EDS
R_{merge}	0.08	Depositor
R_{sym}	(Not available)	Depositor
$\langle I/\sigma(I) \rangle$ ¹	2.91 (at 3.12Å)	Xtrriage
Refinement program	REFMAC 5.8.0258	Depositor
R, R_{free}	0.186 , 0.229 0.190 , 0.227	Depositor DCC
R_{free} test set	2303 reflections (5.01%)	wwPDB-VP
Wilson B-factor (Å ²)	100.7	Xtrriage
Anisotropy	0.064	Xtrriage
Bulk solvent k_{sol} (e/Å ³), B_{sol} (Å ²)	(Not available) , (Not available)	EDS
L-test for twinning ²	$\langle L \rangle = 0.50$, $\langle L^2 \rangle = 0.34$	Xtrriage
Estimated twinning fraction	0.012 for 1/2*h-1/2*k,-3/2*h-1/2*k,-l 0.014 for 1/2*h+1/2*k,3/2*h-1/2*k,-l	Xtrriage
F_o, F_c correlation	0.96	EDS
Total number of atoms	13416	wwPDB-VP
Average B, all atoms (Å ²)	127.0	wwPDB-VP

Xtrriage's analysis on translational NCS is as follows: *The largest off-origin peak in the Patterson function is 3.15% of the height of the origin peak. No significant pseudotranslation is detected.*

¹Intensities estimated from amplitudes.

²Theoretical values of $\langle |L| \rangle$, $\langle L^2 \rangle$ for acentric reflections are 0.5, 0.333 respectively for untwinned datasets, and 0.375, 0.2 for perfectly twinned datasets.

5 Model quality [i](#)

5.1 Standard geometry [i](#)

Bond lengths and bond angles in the following residue types are not validated in this section: FAD, ATR, MPD, AU, NA

The Z score for a bond length (or angle) is the number of standard deviations the observed value is removed from the expected value. A bond length (or angle) with $|Z| > 5$ is considered an outlier worth inspection. RMSZ is the root-mean-square of all Z scores of the bond lengths (or angles).

Mol	Chain	Bond lengths		Bond angles	
		RMSZ	# Z >5	RMSZ	# Z >5
1	A	0.75	0/4573	0.86	0/6182
1	B	0.75	0/4571	0.86	0/6179
1	C	0.72	0/4294	0.84	0/5789
All	All	0.74	0/13438	0.86	0/18150

There are no bond length outliers.

There are no bond angle outliers.

There are no chirality outliers.

There are no planarity outliers.

5.2 Too-close contacts [i](#)

In the following table, the Non-H and H(model) columns list the number of non-hydrogen atoms and hydrogen atoms in the chain respectively. The H(added) column lists the number of hydrogen atoms added and optimized by MolProbity. The Clashes column lists the number of clashes within the asymmetric unit, whereas Symm-Clashes lists symmetry-related clashes.

Mol	Chain	Non-H	H(model)	H(added)	Clashes	Symm-Clashes
1	A	4484	0	4511	74	0
1	B	4482	0	4512	52	0
1	C	4218	0	4261	117	0
2	A	53	0	31	0	0
2	B	53	0	31	3	0
2	C	53	0	31	3	0
3	A	31	0	11	6	0
4	A	16	0	28	3	0
4	B	24	0	42	3	0
5	A	1	0	0	0	0

Continued on next page...

Continued from previous page...

Mol	Chain	Non-H	H(model)	H(added)	Clashes	Symm-Clashes
6	B	1	0	0	0	0
All	All	13416	0	13458	245	0

The all-atom clashscore is defined as the number of clashes found per 1000 atoms (including hydrogen atoms). The all-atom clashscore for this structure is 9.

All (245) close contacts within the same asymmetric unit are listed below, sorted by their clash magnitude.

Atom-1	Atom-2	Interatomic distance (Å)	Clash overlap (Å)
1:A:390:ILE:O	3:A:602:ATR:H5'1	1.21	1.36
1:C:417:ARG:HG2	1:C:422:VAL:HG23	1.25	1.12
1:C:356:PRO:O	1:C:360:GLU:O	1.70	1.09
1:C:409:ALA:CA	1:C:415:ILE:HD11	1.87	1.04
1:C:501:HIS:CD2	1:C:585:LYS:HB2	1.94	1.02
1:C:156:VAL:CG1	1:C:276:ASP:HA	1.88	1.01
1:C:417:ARG:CG	1:C:422:VAL:HG23	1.92	1.00
1:A:502:ASN:OD1	1:A:503:VAL:O	1.79	0.98
1:C:156:VAL:HG11	1:C:276:ASP:HA	1.45	0.98
1:A:390:ILE:O	3:A:602:ATR:C5'	2.12	0.97
1:C:409:ALA:HA	1:C:415:ILE:HD11	1.46	0.95
1:C:501:HIS:HD2	1:C:585:LYS:HB2	1.32	0.93
1:C:126:VAL:HG21	1:C:220:VAL:HG22	1.47	0.92
1:A:293:ALA:HB2	1:A:315:VAL:HG13	1.52	0.89
1:C:156:VAL:HG11	1:C:276:ASP:CA	2.04	0.87
1:C:93:GLU:O	1:C:95:SER:O	1.95	0.85
1:A:501:HIS:CD2	1:A:585:LYS:HB2	2.12	0.85
1:C:416:GLY:HA2	1:C:422:VAL:H	1.44	0.81
1:A:501:HIS:HD2	1:A:585:LYS:HB2	1.46	0.81
1:C:273:ILE:HG22	1:C:386:VAL:O	1.81	0.81
1:C:417:ARG:HG2	1:C:422:VAL:CG2	2.08	0.80
1:C:156:VAL:HG12	1:C:156:VAL:O	1.82	0.80
1:C:294:SER:OG	1:C:296:VAL:HG22	1.81	0.79
1:A:293:ALA:HB2	1:A:315:VAL:CG1	2.10	0.79
1:C:66:GLU:O	1:C:418:ARG:NH1	2.16	0.79
1:A:317:SER:HB2	3:A:602:ATR:O2P	1.84	0.77
1:C:419:GLU:O	1:C:428:TYR:HD2	1.66	0.77
1:C:161:LYS:CD	2:C:601:FAD:H6	2.15	0.76
1:C:287:LYS:H	1:C:384:ASN:HD22	1.31	0.76
1:C:73:MET:HB2	1:C:74:PRO:HD3	1.67	0.75
1:C:416:GLY:HA2	1:C:422:VAL:N	2.00	0.75
1:C:156:VAL:HG13	1:C:276:ASP:HA	1.69	0.75

Continued on next page...

Continued from previous page...

Atom-1	Atom-2	Interatomic distance (Å)	Clash overlap (Å)
1:C:270:GLU:HB2	1:C:350:TYR:HB2	1.68	0.75
1:C:161:LYS:HD3	2:C:601:FAD:H6	1.68	0.74
1:C:270:GLU:OE1	1:C:271:CYS:SG	2.45	0.73
1:A:502:ASN:OD1	1:A:503:VAL:N	2.21	0.73
1:C:238:LYS:HG2	1:C:244:VAL:HG22	1.70	0.72
1:C:143:MET:HG2	1:C:277:ASP:OD1	1.90	0.72
1:C:409:ALA:N	1:C:415:ILE:HD11	2.06	0.71
1:C:404:VAL:HG13	1:C:406:VAL:HG23	1.72	0.70
1:C:415:ILE:O	1:C:422:VAL:HG12	1.92	0.70
1:B:161:LYS:HD2	1:B:299:GLU:OE1	1.92	0.70
1:B:501:HIS:NE2	1:B:585:LYS:HA	2.07	0.70
1:C:143:MET:HG2	1:C:277:ASP:CG	2.13	0.70
1:A:73:MET:HB2	1:A:74:PRO:HD3	1.72	0.69
1:B:357:THR:CG2	1:B:360:GLU:HB2	2.24	0.68
1:C:105:HIS:ND1	1:C:248:THR:CG2	2.57	0.68
4:A:604:MPD:H52	4:A:604:MPD:HM1	1.75	0.68
1:C:256:VAL:HG23	1:C:256:VAL:O	1.93	0.68
1:C:191:LEU:HD12	1:C:191:LEU:O	1.94	0.67
1:C:201:GLN:NE2	1:C:279:PHE:O	2.28	0.67
1:A:415:ILE:HG22	1:A:422:VAL:HG21	1.75	0.66
1:C:156:VAL:CG1	1:C:276:ASP:CA	2.69	0.66
1:C:156:VAL:HG11	1:C:276:ASP:CB	2.24	0.66
1:B:453:ARG:O	1:B:457:THR:HB	1.97	0.65
4:A:604:MPD:HM1	4:A:604:MPD:C5	2.26	0.65
1:C:453:ARG:O	1:C:457:THR:HB	1.97	0.65
1:C:139:LYS:CE	1:C:226:TYR:CE2	2.80	0.64
1:C:139:LYS:HE3	1:C:226:TYR:CE2	2.33	0.64
1:C:149:LEU:O	1:C:208:ASN:HB3	1.98	0.64
1:A:316:ARG:HB3	1:A:346:VAL:HG23	1.79	0.64
1:A:453:ARG:O	1:A:457:THR:HB	1.97	0.63
1:B:576:GLU:O	1:B:579:THR:HB	1.98	0.63
1:A:415:ILE:HG22	1:A:422:VAL:CG2	2.29	0.63
1:B:579:THR:HG22	1:B:580:THR:HG23	1.81	0.63
1:A:317:SER:CB	3:A:602:ATR:O2P	2.48	0.62
1:B:486:TYR:CE2	1:B:490:GLN:OE1	2.53	0.62
1:C:419:GLU:O	1:C:428:TYR:CD2	2.52	0.62
1:C:29:ALA:O	1:C:30:TYR:HB3	2.00	0.61
1:C:501:HIS:CD2	1:C:585:LYS:CB	2.79	0.61
1:C:156:VAL:HG11	1:C:276:ASP:HB3	1.81	0.61
1:A:47:TYR:OH	1:A:93:GLU:OE1	2.14	0.61
1:B:161:LYS:CD	1:B:299:GLU:OE1	2.50	0.60

Continued on next page...

Continued from previous page...

Atom-1	Atom-2	Interatomic distance (Å)	Clash overlap (Å)
1:A:495:GLU:OE2	1:A:495:GLU:N	2.26	0.60
1:C:135:LEU:HD23	1:C:227:ALA:HB2	1.81	0.60
1:B:495:GLU:CD	1:B:495:GLU:H	2.04	0.60
1:B:27:LEU:HD11	1:B:54:VAL:HG23	1.85	0.59
1:C:416:GLY:HA3	1:C:421:SER:HA	1.84	0.59
1:A:316:ARG:HB3	1:A:346:VAL:CG2	2.32	0.59
1:A:365:ARG:NH2	1:A:382:ASP:OD1	2.36	0.59
1:B:358:ASP:O	1:B:359:SER:HB2	2.03	0.59
1:B:495:GLU:O	1:B:528:LYS:NZ	2.27	0.59
1:C:126:VAL:HG21	1:C:220:VAL:CG2	2.27	0.58
1:B:135:LEU:HD23	1:B:227:ALA:HB2	1.85	0.58
1:C:287:LYS:N	1:C:384:ASN:HD22	2.02	0.58
1:C:27:LEU:HD11	1:C:54:VAL:HG23	1.87	0.57
1:C:126:VAL:HG11	1:C:218:LYS:O	2.04	0.57
1:C:360:GLU:CD	1:C:361:PRO:HD2	2.25	0.57
1:B:465:TYR:CE1	4:B:603:MPD:H11	2.39	0.57
1:A:321:ARG:HD2	3:A:602:ATR:O2B	2.06	0.56
1:C:409:ALA:CB	1:C:415:ILE:HD11	2.34	0.56
1:B:135:LEU:HD12	1:B:135:LEU:N	2.21	0.56
4:B:603:MPD:HM1	4:B:603:MPD:O4	2.06	0.56
1:B:357:THR:HG23	1:B:360:GLU:HB2	1.88	0.56
1:C:147:TRP:CH2	1:C:276:ASP:HB2	2.41	0.56
1:C:288:THR:HG21	1:C:304:LEU:HD13	1.86	0.55
1:B:161:LYS:NZ	2:B:601:FAD:O4	2.40	0.55
1:A:315:VAL:O	1:A:344:GLN:HA	2.06	0.55
1:C:156:VAL:CG1	1:C:156:VAL:O	2.51	0.55
4:B:604:MPD:O4	4:B:604:MPD:O2	2.22	0.54
1:A:184:ILE:HD13	1:B:189:ILE:HG21	1.89	0.54
1:A:124:GLU:OE2	1:A:127:ARG:NH1	2.41	0.54
1:A:325:GLN:O	1:A:329:GLU:HG2	2.07	0.54
1:C:126:VAL:CG2	1:C:220:VAL:HG22	2.30	0.54
1:C:73:MET:HB2	1:C:74:PRO:CD	2.37	0.54
1:A:492:TYR:O	1:A:496:ASN:ND2	2.39	0.53
1:A:27:LEU:HD11	1:A:54:VAL:HG23	1.90	0.53
1:C:270:GLU:CB	1:C:350:TYR:HB2	2.39	0.53
1:A:315:VAL:HG21	1:A:319:LEU:HD21	1.91	0.53
1:C:294:SER:OG	1:C:296:VAL:CG2	2.53	0.53
1:B:317:SER:OG	1:B:321:ARG:NH2	2.42	0.53
1:A:365:ARG:HD3	1:A:382:ASP:OD1	2.08	0.52
1:C:415:ILE:O	1:C:422:VAL:CG1	2.57	0.52
1:A:570:ILE:HD11	1:B:469:PRO:HB2	1.90	0.52

Continued on next page...

Continued from previous page...

Atom-1	Atom-2	Interatomic distance (Å)	Clash overlap (Å)
1:C:496:ASN:HB3	1:C:529:ASN:ND2	2.25	0.52
1:A:229:PHE:CD1	1:A:404:VAL:HG21	2.44	0.52
1:A:364:ILE:HD12	1:A:364:ILE:N	2.25	0.52
1:B:486:TYR:HE2	1:B:490:GLN:OE1	1.92	0.51
1:B:345:CYS:SG	1:B:370:GLN:OE1	2.64	0.51
1:A:40:VAL:O	1:A:43:LEU:HB3	2.11	0.51
1:B:404:VAL:HG12	1:B:404:VAL:O	2.10	0.51
1:A:63:ASP:O	1:A:67:ILE:HD12	2.10	0.50
1:B:134:CYS:C	1:B:135:LEU:HD12	2.31	0.50
1:C:135:LEU:N	1:C:135:LEU:HD12	2.26	0.50
1:A:326:ASP:OD1	1:A:330:ARG:NH2	2.44	0.50
1:C:364:ILE:HD12	1:C:364:ILE:N	2.26	0.50
1:B:226:TYR:CE1	2:B:601:FAD:N6A	2.80	0.50
1:C:417:ARG:CD	1:C:422:VAL:HG23	2.41	0.50
1:C:69:GLY:O	1:C:417:ARG:NH1	2.44	0.50
1:C:287:LYS:H	1:C:384:ASN:ND2	2.06	0.50
1:A:73:MET:HB2	1:A:74:PRO:CD	2.40	0.49
1:A:19:LYS:HE3	1:A:23:GLU:HG3	1.94	0.49
1:C:139:LYS:HE2	1:C:226:TYR:CE2	2.48	0.48
1:B:486:TYR:O	1:B:487:SER:C	2.50	0.48
1:C:134:CYS:C	1:C:135:LEU:HD12	2.33	0.48
1:C:363:MET:CE	1:C:382:ASP:HB3	2.43	0.48
1:C:496:ASN:ND2	1:C:529:ASN:OD1	2.47	0.48
1:B:229:PHE:CD1	1:B:404:VAL:HG21	2.48	0.48
1:B:401:LEU:HD12	1:B:408:ARG:HD3	1.96	0.48
1:C:161:LYS:HG3	1:C:279:PHE:CZ	2.49	0.47
1:A:124:GLU:CD	1:A:127:ARG:NH1	2.68	0.47
1:C:105:HIS:ND1	1:C:248:THR:HG22	2.28	0.47
1:A:404:VAL:HG12	1:A:404:VAL:O	2.13	0.47
1:B:305:LYS:HD2	1:B:305:LYS:O	2.15	0.47
1:B:293:ALA:HB1	1:B:319:LEU:HA	1.97	0.46
1:C:43:LEU:HD11	1:C:93:GLU:HG3	1.97	0.46
1:C:576:GLU:O	1:C:579:THR:OG1	2.31	0.46
1:B:485:GLU:OE1	1:B:523:LYS:NZ	2.39	0.46
1:A:365:ARG:HD2	1:A:380:THR:CB	2.46	0.46
1:A:555:LEU:N	1:A:555:LEU:HD12	2.31	0.46
1:A:38:THR:O	1:A:41:VAL:HG12	2.15	0.46
1:A:401:LEU:HD12	1:A:408:ARG:HD3	1.98	0.46
1:A:409:ALA:O	1:A:411:SER:O	2.34	0.46
1:A:586:GLU:OE1	1:A:586:GLU:HA	2.16	0.46
1:C:315:VAL:HG11	1:C:319:LEU:CD2	2.46	0.45

Continued on next page...

Continued from previous page...

Atom-1	Atom-2	Interatomic distance (Å)	Clash overlap (Å)
1:C:355:LYS:HG2	1:C:356:PRO:HD2	1.98	0.45
1:B:24:GLU:OE2	1:B:52:ASN:OD1	2.35	0.45
1:A:228:THR:HG23	1:A:399:LEU:C	2.36	0.45
1:C:555:LEU:HD12	1:C:555:LEU:N	2.32	0.45
1:B:555:LEU:N	1:B:555:LEU:HD12	2.32	0.45
1:C:401:LEU:HD12	1:C:408:ARG:HD3	1.97	0.45
1:A:469:PRO:HB2	1:B:570:ILE:HD11	1.99	0.45
1:C:409:ALA:O	1:C:411:SER:O	2.35	0.45
1:C:271:CYS:SG	1:C:352:ARG:NH1	2.90	0.45
1:A:330:ARG:HH21	1:A:330:ARG:HG3	1.82	0.44
1:A:501:HIS:CD2	1:A:585:LYS:CB	2.93	0.44
1:B:259:ARG:HA	1:B:259:ARG:HD2	1.85	0.44
1:A:365:ARG:HD2	1:A:380:THR:HB	2.00	0.44
1:A:441:THR:HB	1:A:442:PRO:HD3	2.00	0.44
1:B:135:LEU:N	1:B:135:LEU:CD1	2.81	0.44
1:A:310:ASP:OD1	1:A:310:ASP:C	2.56	0.44
1:C:416:GLY:C	1:C:420:GLN:O	2.56	0.44
1:C:571:HIS:HA	1:C:572:PRO:HA	1.85	0.44
1:C:273:ILE:HG22	1:C:386:VAL:C	2.38	0.44
1:B:409:ALA:O	1:B:411:SER:O	2.36	0.43
1:A:293:ALA:HB2	1:A:315:VAL:HG11	1.96	0.43
1:B:191:LEU:C	1:B:191:LEU:HD13	2.38	0.43
1:A:415:ILE:O	1:A:422:VAL:HG23	2.19	0.43
1:B:310:ASP:OD1	1:B:310:ASP:C	2.57	0.43
1:C:40:VAL:O	1:C:43:LEU:HB3	2.19	0.43
1:B:324:ASP:OD1	1:B:326:ASP:HB3	2.19	0.43
1:C:17:VAL:HG22	1:C:54:VAL:HG11	2.00	0.43
1:C:409:ALA:N	1:C:415:ILE:CD1	2.78	0.43
1:A:43:LEU:HD11	1:A:93:GLU:CD	2.39	0.43
1:C:363:MET:HE1	1:C:382:ASP:HB3	2.00	0.43
1:C:310:ASP:C	1:C:310:ASP:OD1	2.57	0.43
1:A:293:ALA:HB1	1:A:319:LEU:HA	2.00	0.43
1:B:465:TYR:HA	1:B:468:ILE:HD11	2.00	0.43
1:C:66:GLU:C	1:C:418:ARG:NH1	2.63	0.43
1:C:270:GLU:OE2	1:C:352:ARG:NH1	2.52	0.43
1:C:409:ALA:HB2	1:C:415:ILE:HG12	2.01	0.43
1:C:446:GLN:OE1	1:C:446:GLN:HA	2.19	0.43
1:A:316:ARG:NH1	3:A:602:ATR:N7	2.67	0.42
1:B:19:LYS:HE2	1:B:23:GLU:OE2	2.18	0.42
1:B:492:TYR:O	1:B:496:ASN:ND2	2.39	0.42
1:B:446:GLN:HA	1:B:446:GLN:OE1	2.19	0.42

Continued on next page...

Continued from previous page...

Atom-1	Atom-2	Interatomic distance (Å)	Clash overlap (Å)
2:B:601:FAD:H9	2:B:601:FAD:H1'1	1.86	0.42
1:A:367:HIS:HD2	1:A:378:GLU:OE1	2.02	0.42
1:B:42:ASN:O	1:B:45:SER:HB2	2.19	0.42
1:C:139:LYS:HE2	1:C:226:TYR:CD2	2.55	0.42
1:C:283:TYR:CE2	1:C:356:PRO:HB2	2.54	0.42
1:C:441:THR:HB	1:C:442:PRO:HD3	2.00	0.42
1:C:441:THR:O	1:C:445:ILE:HG13	2.19	0.42
1:C:481:CYS:O	1:C:536:GLY:HA2	2.20	0.42
1:A:65:LEU:HD21	1:A:72:SER:O	2.20	0.42
1:B:441:THR:O	1:B:445:ILE:HG13	2.20	0.42
1:C:103:LYS:O	1:C:105:HIS:CD2	2.73	0.42
1:C:176:ASP:OD2	1:C:514:ARG:NH1	2.48	0.42
2:C:601:FAD:H9	2:C:601:FAD:H1'1	1.85	0.42
1:A:191:LEU:HD12	1:B:182:TRP:CE2	2.55	0.42
1:A:496:ASN:HB3	1:A:529:ASN:ND2	2.35	0.42
1:A:103:LYS:O	1:A:105:HIS:CD2	2.73	0.42
1:A:176:ASP:OD2	1:A:514:ARG:NH1	2.49	0.42
1:C:204:ILE:HG22	1:C:208:ASN:ND2	2.35	0.42
1:A:17:VAL:HG22	1:A:54:VAL:HG11	2.02	0.41
4:A:603:MPD:H52	4:A:603:MPD:O2	2.20	0.41
1:A:81:ASN:HD21	1:A:251:ARG:HD3	1.85	0.41
1:A:135:LEU:HD13	1:A:227:ALA:HB2	2.01	0.41
1:C:256:VAL:O	1:C:256:VAL:CG2	2.63	0.41
1:B:176:ASP:OD2	1:B:514:ARG:NH1	2.46	0.41
1:A:124:GLU:CD	1:A:127:ARG:HH11	2.23	0.41
1:A:550:GLY:O	1:A:553:ILE:HG22	2.20	0.41
1:C:30:TYR:H	1:C:56:VAL:HG23	1.85	0.41
1:A:191:LEU:HD12	1:B:182:TRP:CD1	2.56	0.41
1:C:147:TRP:CZ3	1:C:276:ASP:HB2	2.56	0.41
1:C:409:ALA:HB2	1:C:415:ILE:HD11	2.01	0.41
1:C:417:ARG:N	1:C:420:GLN:O	2.54	0.41
1:A:110:ALA:HB3	1:A:252:PHE:CD1	2.56	0.41
1:A:446:GLN:HA	1:A:446:GLN:OE1	2.20	0.41
1:A:224:ASN:OD1	1:A:240:LYS:HE3	2.20	0.41
1:B:495:GLU:OE1	1:B:495:GLU:N	2.37	0.41
1:C:79:LYS:O	1:C:251:ARG:NH1	2.54	0.41
1:C:135:LEU:N	1:C:135:LEU:CD1	2.84	0.41
1:C:191:LEU:HD12	1:C:191:LEU:C	2.40	0.41
1:C:417:ARG:HG2	1:C:422:VAL:CB	2.50	0.41
1:C:501:HIS:NE2	1:C:585:LYS:HA	2.35	0.41
1:C:501:HIS:NE2	1:C:585:LYS:CA	2.84	0.41

Continued on next page...

Continued from previous page...

Atom-1	Atom-2	Interatomic distance (Å)	Clash overlap (Å)
1:A:324:ASP:OD1	1:A:326:ASP:HB3	2.20	0.41
1:A:365:ARG:HD2	1:A:380:THR:OG1	2.20	0.41
1:B:103:LYS:O	1:B:105:HIS:CD2	2.75	0.40
1:C:324:ASP:OD1	1:C:326:ASP:HB3	2.21	0.40
1:A:263:PRO:HB2	1:A:265:VAL:HG23	2.04	0.40
1:C:273:ILE:CD1	1:C:281:LEU:HD11	2.51	0.40
1:C:496:ASN:HB3	1:C:529:ASN:HD21	1.86	0.40
1:B:17:VAL:HG22	1:B:54:VAL:HG11	2.03	0.40

There are no symmetry-related clashes.

5.3 Torsion angles [i](#)

5.3.1 Protein backbone [i](#)

In the following table, the Percentiles column shows the percent Ramachandran outliers of the chain as a percentile score with respect to all X-ray entries followed by that with respect to entries of similar resolution.

The Analysed column shows the number of residues for which the backbone conformation was analysed, and the total number of residues.

Mol	Chain	Analysed	Favoured	Allowed	Outliers	Percentiles	
1	A	575/598 (96%)	549 (96%)	26 (4%)	0	100	100
1	B	575/598 (96%)	542 (94%)	32 (6%)	1 (0%)	47	79
1	C	525/598 (88%)	498 (95%)	27 (5%)	0	100	100
All	All	1675/1794 (93%)	1589 (95%)	85 (5%)	1 (0%)	51	83

All (1) Ramachandran outliers are listed below:

Mol	Chain	Res	Type
1	B	59	ASP

5.3.2 Protein sidechains [i](#)

In the following table, the Percentiles column shows the percent sidechain outliers of the chain as a percentile score with respect to all X-ray entries followed by that with respect to entries of similar resolution.

The Analysed column shows the number of residues for which the sidechain conformation was

analysed, and the total number of residues.

Mol	Chain	Analysed	Rotameric	Outliers	Percentiles	
1	A	488/504 (97%)	485 (99%)	3 (1%)	86	94
1	B	488/504 (97%)	481 (99%)	7 (1%)	67	86
1	C	460/504 (91%)	453 (98%)	7 (2%)	65	85
All	All	1436/1512 (95%)	1419 (99%)	17 (1%)	71	88

All (17) residues with a non-rotameric sidechain are listed below:

Mol	Chain	Res	Type
1	A	158	CYS
1	A	468	ILE
1	A	582	THR
1	B	158	CYS
1	B	202	ASN
1	B	315	VAL
1	B	379	VAL
1	B	402	ASP
1	B	503	VAL
1	B	579	THR
1	C	59	ASP
1	C	158	CYS
1	C	208	ASN
1	C	224	ASN
1	C	365	ARG
1	C	474	THR
1	C	558	ASP

Sometimes sidechains can be flipped to improve hydrogen bonding and reduce clashes. All (13) such sidechains are listed below:

Mol	Chain	Res	Type
1	A	81	ASN
1	A	99	ASN
1	A	105	HIS
1	A	367	HIS
1	B	34	ASN
1	B	99	ASN
1	B	105	HIS
1	C	58	ASN
1	C	165	HIS
1	C	208	ASN

Continued on next page...

Continued from previous page...

Mol	Chain	Res	Type
1	C	384	ASN
1	C	496	ASN
1	C	529	ASN

5.3.3 RNA [i](#)

There are no RNA molecules in this entry.

5.4 Non-standard residues in protein, DNA, RNA chains [i](#)

There are no non-standard protein/DNA/RNA residues in this entry.

5.5 Carbohydrates [i](#)

There are no monosaccharides in this entry.

5.6 Ligand geometry [i](#)

Of 11 ligands modelled in this entry, 2 are monoatomic - leaving 9 for Mogul analysis.

In the following table, the Counts columns list the number of bonds (or angles) for which Mogul statistics could be retrieved, the number of bonds (or angles) that are observed in the model and the number of bonds (or angles) that are defined in the Chemical Component Dictionary. The Link column lists molecule types, if any, to which the group is linked. The Z score for a bond length (or angle) is the number of standard deviations the observed value is removed from the expected value. A bond length (or angle) with $|Z| > 2$ is considered an outlier worth inspection. RMSZ is the root-mean-square of all Z scores of the bond lengths (or angles).

Mol	Type	Chain	Res	Link	Bond lengths			Bond angles		
					Counts	RMSZ	# Z > 2	Counts	RMSZ	# Z > 2
2	FAD	B	601	-	51,58,58	1.09	2 (3%)	60,89,89	1.77	7 (11%)
4	MPD	A	603	-	7,7,7	0.13	0	9,10,10	0.33	0
2	FAD	A	601	5	51,58,58	1.12	2 (3%)	60,89,89	1.81	7 (11%)
4	MPD	A	604	-	7,7,7	0.12	0	9,10,10	0.33	0
3	ATR	A	602	-	27,33,33	0.92	1 (3%)	35,52,52	1.30	3 (8%)
2	FAD	C	601	-	51,58,58	1.07	2 (3%)	60,89,89	1.70	6 (10%)
4	MPD	B	605	-	7,7,7	0.12	0	9,10,10	0.33	0
4	MPD	B	604	-	7,7,7	0.11	0	9,10,10	0.33	0
4	MPD	B	603	-	7,7,7	0.12	0	9,10,10	0.33	0

In the following table, the Chirals column lists the number of chiral outliers, the number of chiral centers analysed, the number of these observed in the model and the number defined in the Chemical Component Dictionary. Similar counts are reported in the Torsion and Rings columns. '-' means no outliers of that kind were identified.

Mol	Type	Chain	Res	Link	Chirals	Torsions	Rings
2	FAD	B	601	-	-	2/30/50/50	0/6/6/6
4	MPD	A	603	-	-	2/5/5/5	-
2	FAD	A	601	5	-	3/30/50/50	0/6/6/6
4	MPD	A	604	-	-	3/5/5/5	-
3	ATR	A	602	-	-	6/17/37/37	0/3/3/3
2	FAD	C	601	-	-	4/30/50/50	0/6/6/6
4	MPD	B	605	-	-	1/5/5/5	-
4	MPD	B	604	-	-	0/5/5/5	-
4	MPD	B	603	-	-	2/5/5/5	-

All (7) bond length outliers are listed below:

Mol	Chain	Res	Type	Atoms	Z	Observed(Å)	Ideal(Å)
2	A	601	FAD	C4X-C10	5.96	1.44	1.38
2	C	601	FAD	C4X-C10	5.69	1.44	1.38
2	B	601	FAD	C4X-C10	5.34	1.44	1.38
2	C	601	FAD	C4-N3	2.69	1.37	1.33
2	A	601	FAD	C4-N3	2.60	1.37	1.33
2	B	601	FAD	C4-N3	2.50	1.37	1.33
3	A	602	ATR	C5-C4	2.43	1.47	1.40

All (23) bond angle outliers are listed below:

Mol	Chain	Res	Type	Atoms	Z	Observed(°)	Ideal(°)
2	A	601	FAD	C2-N3-C4	8.55	122.36	115.14
2	C	601	FAD	C2-N3-C4	8.05	121.94	115.14
2	B	601	FAD	C2-N3-C4	8.05	121.94	115.14
2	A	601	FAD	C10-C4X-N5	5.89	125.33	121.26
2	B	601	FAD	C10-C4X-N5	5.55	125.09	121.26
2	C	601	FAD	C10-C4X-N5	5.27	124.90	121.26
2	C	601	FAD	C10-C4X-C4	-5.20	116.51	119.95
2	B	601	FAD	C10-C4X-C4	-5.09	116.58	119.95
2	A	601	FAD	C10-C4X-C4	-5.03	116.62	119.95
2	C	601	FAD	C4X-C4-N3	-4.11	117.81	123.43
2	A	601	FAD	C4X-C10-N10	-4.11	116.08	120.30
2	B	601	FAD	C4X-C4-N3	-4.09	117.84	123.43
2	A	601	FAD	C4X-C4-N3	-3.93	118.06	123.43

Continued on next page...

Continued from previous page...

Mol	Chain	Res	Type	Atoms	Z	Observed(°)	Ideal(°)
2	B	601	FAD	C4X-C10-N10	-3.86	116.33	120.30
2	C	601	FAD	C4X-C10-N10	-3.84	116.35	120.30
3	A	602	ATR	PA-O3A-PB	-3.19	121.87	132.83
3	A	602	ATR	N3-C2-N1	-3.16	123.75	128.68
2	B	601	FAD	O4B-C1B-C2B	-2.89	102.71	106.93
3	A	602	ATR	C4-C5-N7	-2.68	106.61	109.40
2	B	601	FAD	C5A-C6A-N6A	2.32	123.89	120.35
2	A	601	FAD	C5A-C6A-N6A	2.32	123.87	120.35
2	C	601	FAD	C5A-C6A-N6A	2.30	123.85	120.35
2	A	601	FAD	C1'-N10-C10	2.07	120.27	118.41

There are no chirality outliers.

All (23) torsion outliers are listed below:

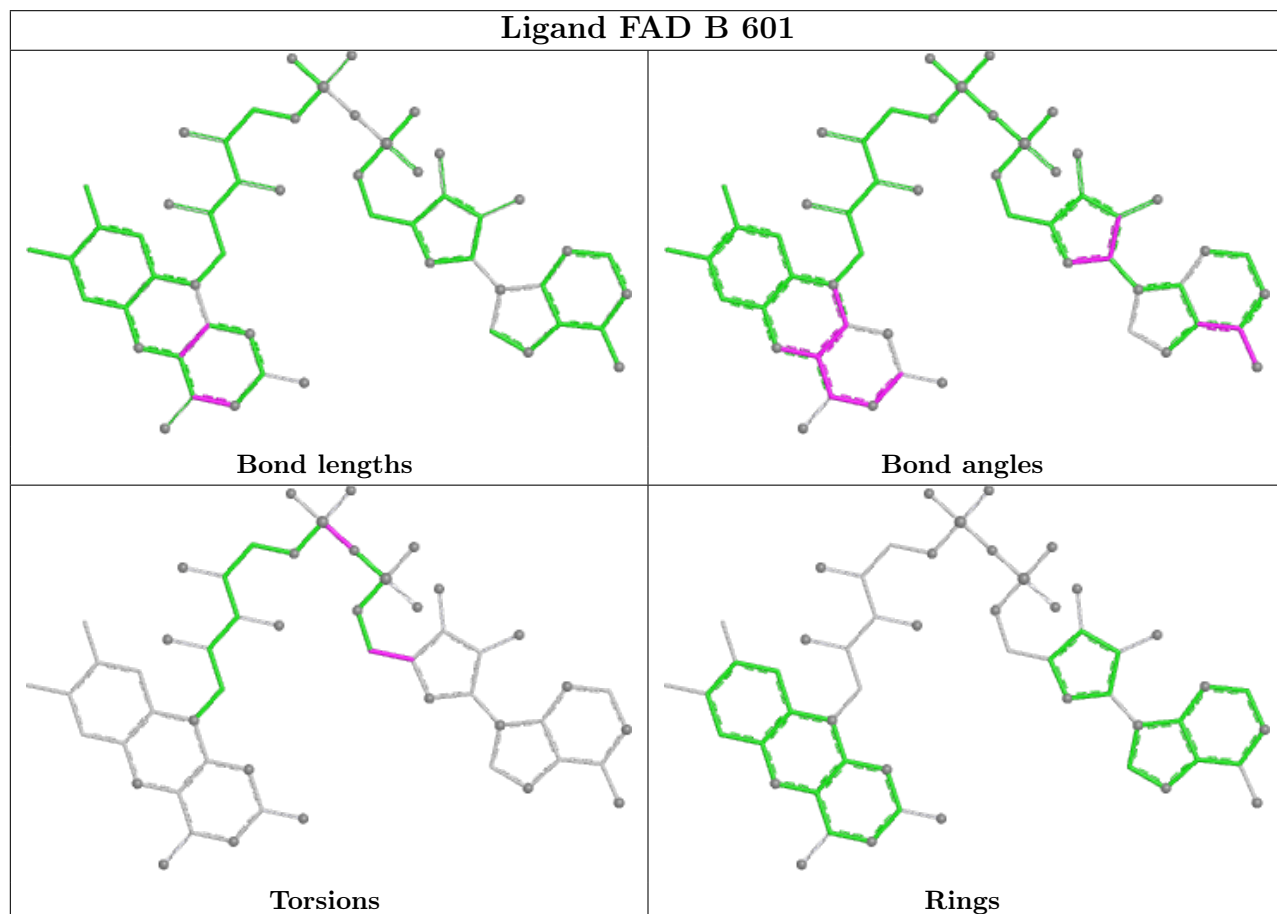
Mol	Chain	Res	Type	Atoms
2	A	601	FAD	PA-O3P-P-O5'
2	C	601	FAD	N10-C1'-C2'-O2'
2	C	601	FAD	PA-O3P-P-O5'
3	A	602	ATR	C5'-O5'-PA-O2A
4	A	603	MPD	C2-C3-C4-O4
4	B	603	MPD	O2-C2-C3-C4
4	B	603	MPD	CM-C2-C3-C4
2	A	601	FAD	O4B-C4B-C5B-O5B
2	A	601	FAD	C3B-C4B-C5B-O5B
2	C	601	FAD	O4B-C4B-C5B-O5B
2	C	601	FAD	C3B-C4B-C5B-O5B
2	B	601	FAD	PA-O3P-P-O5'
4	A	603	MPD	O2-C2-C3-C4
3	A	602	ATR	C5'-O5'-PA-O3A
3	A	602	ATR	C5'-O5'-PA-O1A
4	A	604	MPD	C1-C2-C3-C4
3	A	602	ATR	O4'-C4'-C5'-O5'
4	A	604	MPD	O2-C2-C3-C4
3	A	602	ATR	C3'-C4'-C5'-O5'
3	A	602	ATR	C2'-O2'-P2'-O2P
2	B	601	FAD	O4B-C4B-C5B-O5B
4	A	604	MPD	C2-C3-C4-C5
4	B	605	MPD	C2-C3-C4-C5

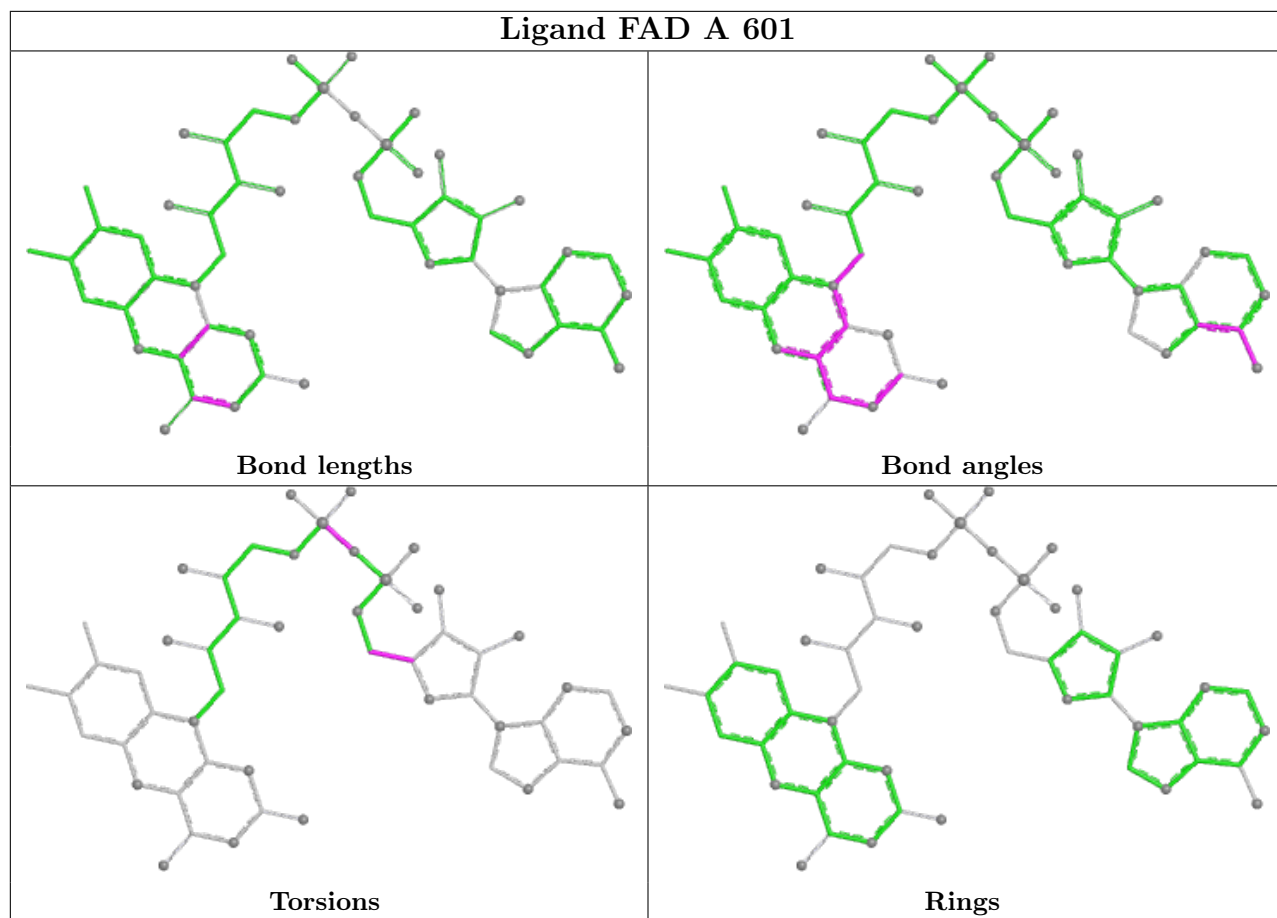
There are no ring outliers.

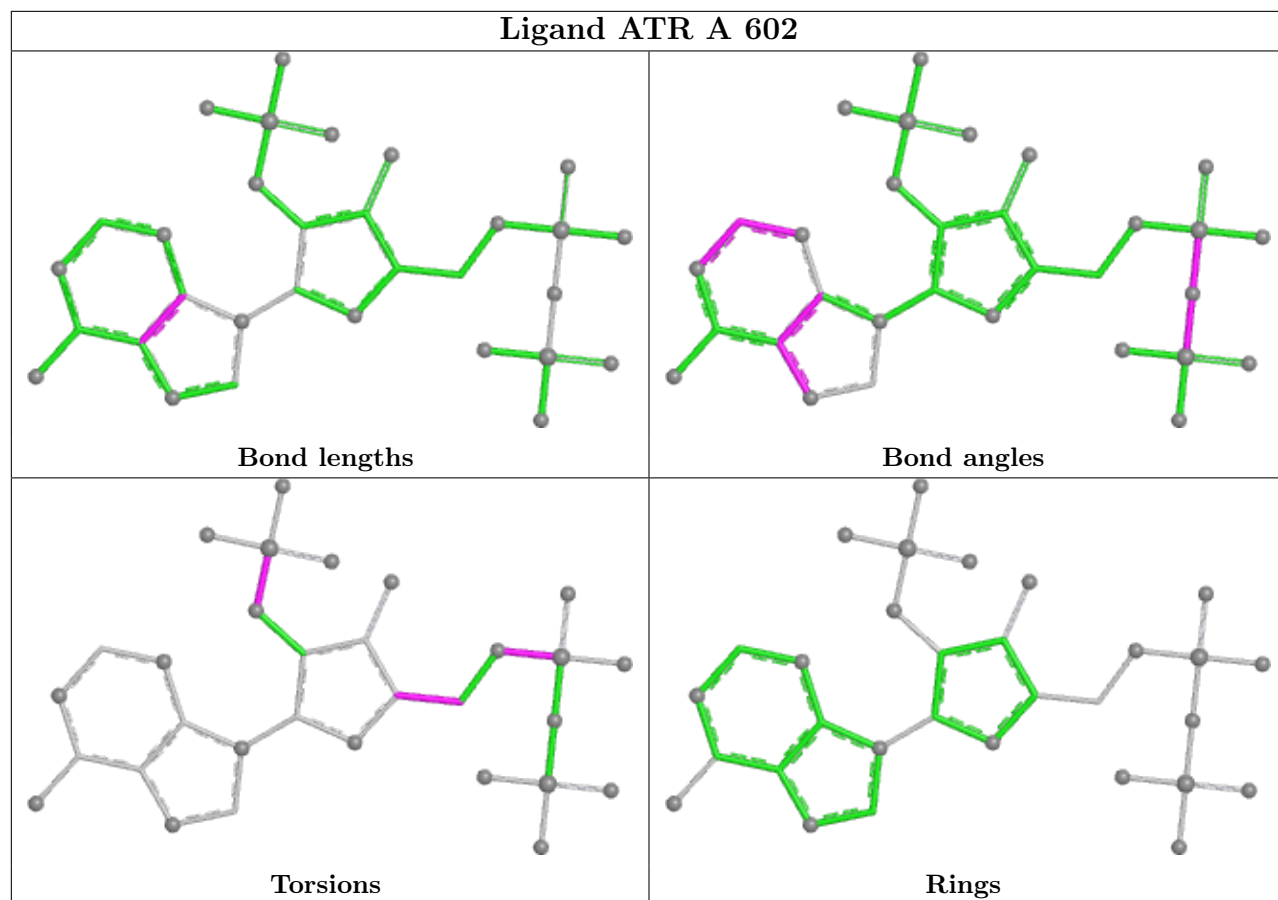
7 monomers are involved in 18 short contacts:

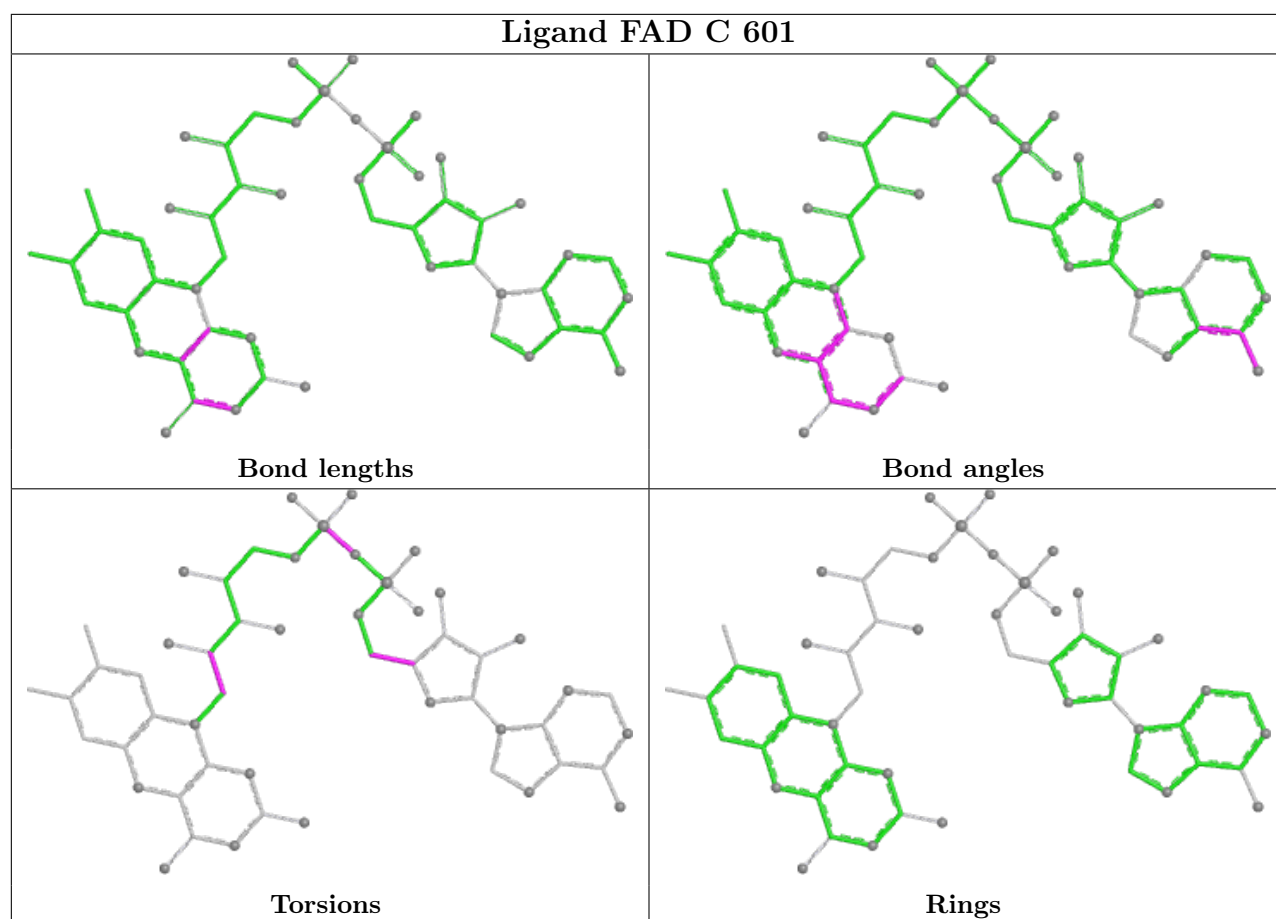
Mol	Chain	Res	Type	Clashes	Symm-Clashes
2	B	601	FAD	3	0
4	A	603	MPD	1	0
4	A	604	MPD	2	0
3	A	602	ATR	6	0
2	C	601	FAD	3	0
4	B	604	MPD	1	0
4	B	603	MPD	2	0

The following is a two-dimensional graphical depiction of Mogul quality analysis of bond lengths, bond angles, torsion angles, and ring geometry for all instances of the Ligand of Interest. In addition, ligands with molecular weight > 250 and outliers as shown on the validation Tables will also be included. For torsion angles, if less than 5% of the Mogul distribution of torsion angles is within 10 degrees of the torsion angle in question, then that torsion angle is considered an outlier. Any bond that is central to one or more torsion angles identified as an outlier by Mogul will be highlighted in the graph. For rings, the root-mean-square deviation (RMSD) between the ring in question and similar rings identified by Mogul is calculated over all ring torsion angles. If the average RMSD is greater than 60 degrees and the minimal RMSD between the ring in question and any Mogul-identified rings is also greater than 60 degrees, then that ring is considered an outlier. The outliers are highlighted in purple. The color gray indicates Mogul did not find sufficient equivalents in the CSD to analyse the geometry.









5.7 Other polymers [i](#)

There are no such residues in this entry.

5.8 Polymer linkage issues [i](#)

There are no chain breaks in this entry.

6 Fit of model and data [i](#)

6.1 Protein, DNA and RNA chains [i](#)

In the following table, the column labelled ‘#RSRZ > 2’ contains the number (and percentage) of RSRZ outliers, followed by percent RSRZ outliers for the chain as percentile scores relative to all X-ray entries and entries of similar resolution. The OWAB column contains the minimum, median, 95th percentile and maximum values of the occupancy-weighted average B-factor per residue. The column labelled ‘Q < 0.9’ lists the number of (and percentage) of residues with an average occupancy less than 0.9.

Mol	Chain	Analysed	<RSRZ>	#RSRZ>2	OWAB(Å ²)	Q<0.9
1	A	577/598 (96%)	-0.31	0 100 100	61, 93, 160, 231	1 (0%)
1	B	577/598 (96%)	-0.30	1 (0%) 95 90	61, 101, 153, 214	1 (0%)
1	C	541/598 (90%)	0.34	39 (7%) 15 6	80, 172, 276, 338	1 (0%)
All	All	1695/1794 (94%)	-0.10	40 (2%) 59 37	61, 112, 226, 338	3 (0%)

All (40) RSRZ outliers are listed below:

Mol	Chain	Res	Type	RSRZ
1	C	290	CYS	6.1
1	C	383	PHE	5.0
1	C	229	PHE	5.0
1	C	387	LEU	4.8
1	C	382	ASP	4.3
1	C	350	TYR	4.1
1	C	44	PHE	3.9
1	C	388	MET	3.9
1	C	55	ARG	3.9
1	C	252	PHE	3.8
1	C	351	GLU	3.7
1	C	263	PRO	3.7
1	C	386	VAL	3.7
1	C	318	VAL	3.6
1	C	273	ILE	3.5
1	C	54	VAL	3.3
1	C	367	HIS	3.2
1	C	27	LEU	3.2
1	C	280	SER	3.1
1	C	353	LEU	3.1
1	C	272	CYS	3.0
1	C	90	TYR	3.0
1	C	304	LEU	2.9

Continued on next page...

Continued from previous page...

Mol	Chain	Res	Type	RSRZ
1	C	246	LYS	2.8
1	C	335	MET	2.8
1	C	279	PHE	2.7
1	C	363	MET	2.7
1	C	262	PHE	2.5
1	C	380	THR	2.4
1	C	50	THR	2.4
1	C	342	PHE	2.4
1	C	384	ASN	2.3
1	C	288	THR	2.2
1	C	365	ARG	2.2
1	C	276	ASP	2.2
1	C	352	ARG	2.2
1	C	587	ASP	2.1
1	C	35	PRO	2.1
1	B	33	TYR	2.1
1	C	317	SER	2.0

6.2 Non-standard residues in protein, DNA, RNA chains [i](#)

There are no non-standard protein/DNA/RNA residues in this entry.

6.3 Carbohydrates [i](#)

There are no monosaccharides in this entry.

6.4 Ligands [i](#)

In the following table, the Atoms column lists the number of modelled atoms in the group and the number defined in the chemical component dictionary. The B-factors column lists the minimum, median, 95th percentile and maximum values of B factors of atoms in the group. The column labelled 'Q< 0.9' lists the number of atoms with occupancy less than 0.9.

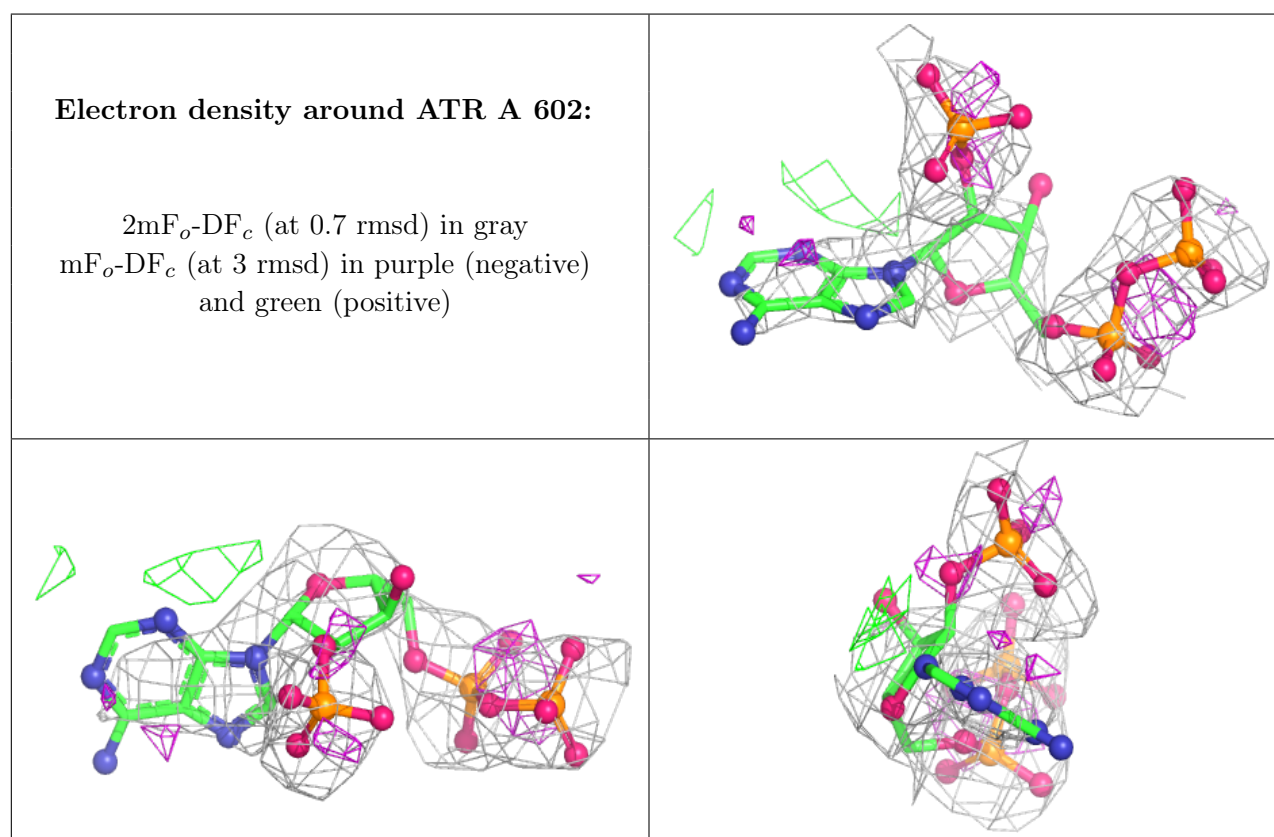
Mol	Type	Chain	Res	Atoms	RSCC	RSR	B-factors(Å ²)	Q<0.9
3	ATR	A	602	31/31	0.77	0.43	90,108,121,124	31
5	NA	A	605	1/1	0.82	0.37	79,79,79,79	1
4	MPD	B	604	8/8	0.83	0.34	124,132,139,141	0
6	AU	B	602	1/1	0.85	0.10	175,175,175,175	1
4	MPD	A	604	8/8	0.87	0.65	127,135,147,155	0
4	MPD	B	603	8/8	0.88	0.28	102,120,128,129	0

Continued on next page...

Continued from previous page...

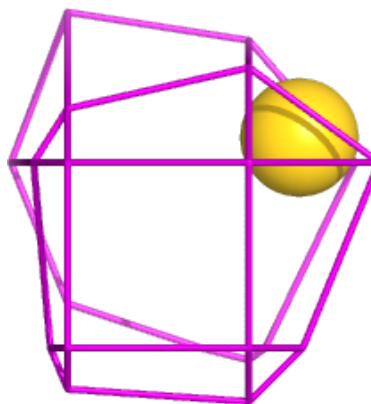
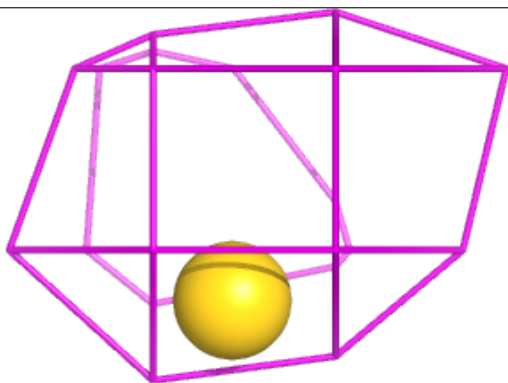
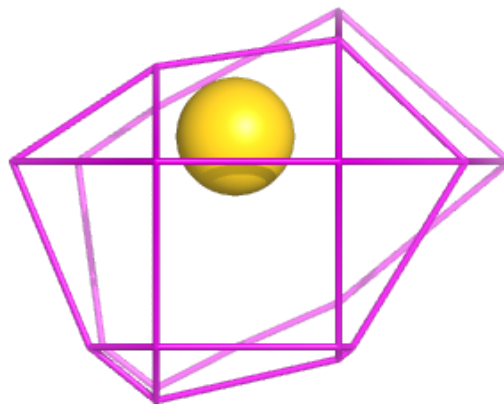
Mol	Type	Chain	Res	Atoms	RSCC	RSR	B-factors(\AA^2)	Q<0.9
2	FAD	C	601	53/53	0.89	0.22	98,144,170,172	0
4	MPD	A	603	8/8	0.91	0.29	89,107,122,122	0
4	MPD	B	605	8/8	0.94	0.27	104,115,124,130	0
2	FAD	B	601	53/53	0.96	0.19	65,80,99,102	0
2	FAD	A	601	53/53	0.96	0.20	60,73,94,100	0

The following is a graphical depiction of the model fit to experimental electron density of all instances of the Ligand of Interest. In addition, ligands with molecular weight > 250 and outliers as shown on the geometry validation Tables will also be included. Each fit is shown from different orientation to approximate a three-dimensional view.



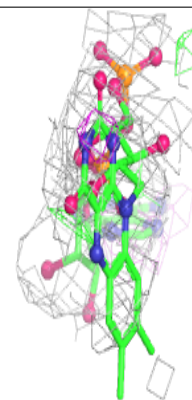
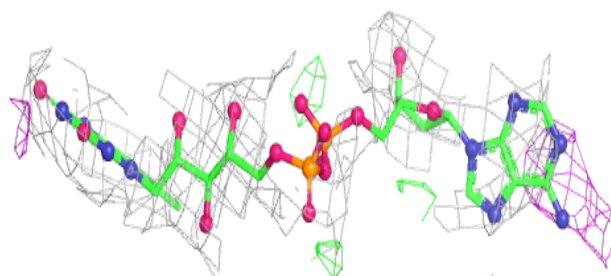
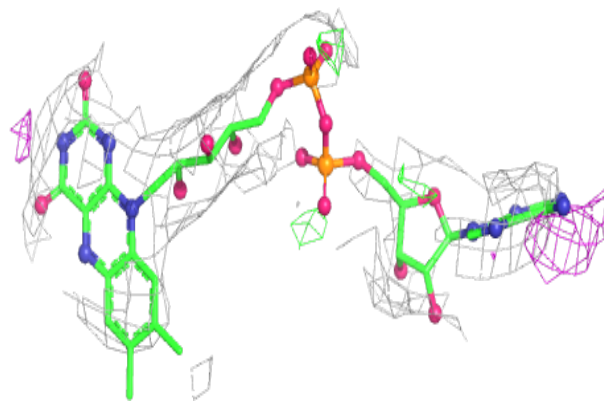
Electron density around AU B 602:

$2mF_o-DF_c$ (at 0.7 rmsd) in gray
 mF_o-DF_c (at 3 rmsd) in purple (negative)
and green (positive)

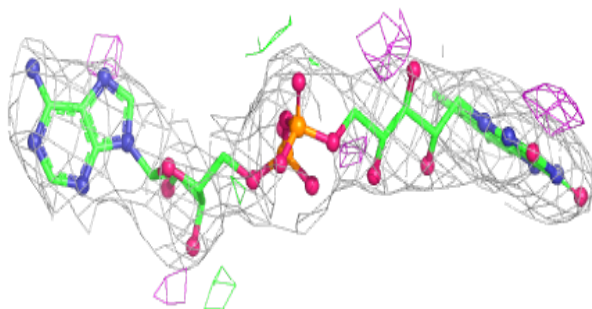
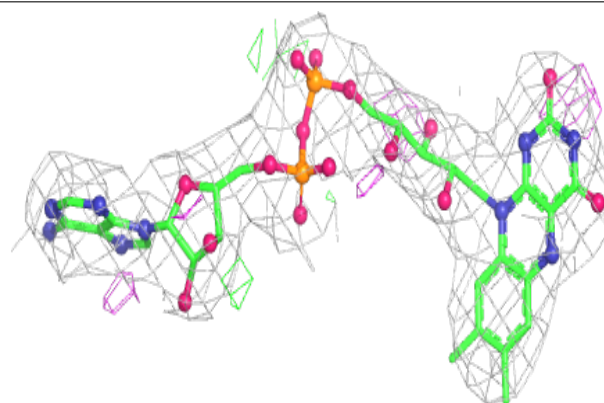


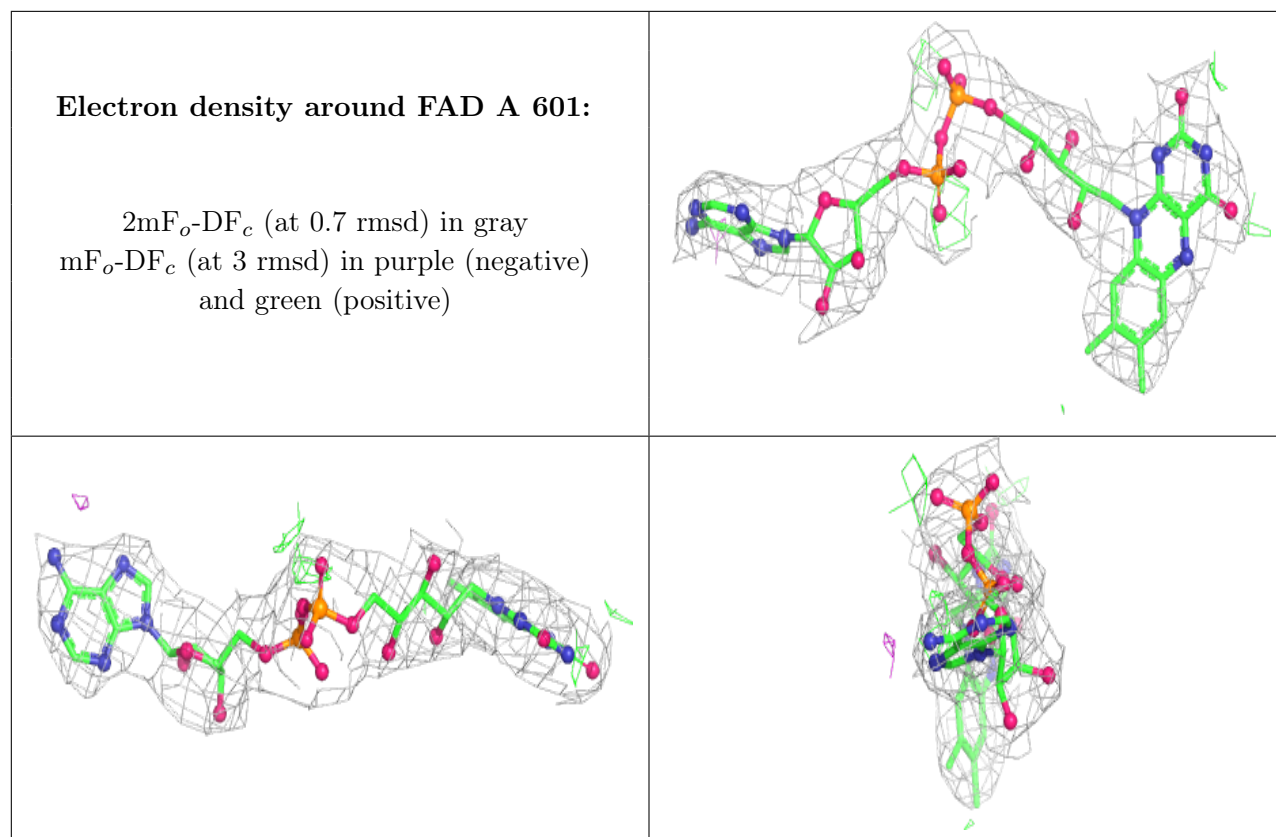
Electron density around FAD C 601:

$2mF_o-DF_c$ (at 0.7 rmsd) in gray
 mF_o-DF_c (at 3 rmsd) in purple (negative)
and green (positive)

**Electron density around FAD B 601:**

$2mF_o-DF_c$ (at 0.7 rmsd) in gray
 mF_o-DF_c (at 3 rmsd) in purple (negative)
and green (positive)





6.5 Other polymers [i](#)

There are no such residues in this entry.