



Full wwPDB X-ray Structure Validation Report

Dec 19, 2023 – 03:47 AM EST

PDB ID : 2PYE
Title : Crystal Structures of High Affinity Human T-Cell Receptors Bound to pMHC Reveal Native Diagonal Binding Geometry TCR Clone C5C1 Complexed with MHC
Authors : Sami, M.; Rizkallah, P.J.; Dunn, S.; Li, Y.; Moysey, R.; Vuidepot, A.; Baston, E.; Todorov, P.; Molloy, P.; Gao, F.; Boulter, J.M.; Jakobsen, B.K.
Deposited on : 2007-05-16
Resolution : 2.30 Å (reported)

This is a Full wwPDB X-ray Structure Validation Report for a publicly released PDB entry.

We welcome your comments at validation@mail.wwpdb.org

A user guide is available at

<https://www.wwpdb.org/validation/2017/XrayValidationReportHelp>

with specific help available everywhere you see the  symbol.

The types of validation reports are described at

<http://www.wwpdb.org/validation/2017/FAQs#types>.

The following versions of software and data (see [references](#) ①) were used in the production of this report:

MolProbity : 4.02b-467
Mogul : 1.8.5 (274361), CSD as541be (2020)
Xtrriage (Phenix) : 1.13
EDS : 2.36
buster-report : 1.1.7 (2018)
Percentile statistics : 20191225.v01 (using entries in the PDB archive December 25th 2019)
Refmac : 5.8.0158
CCP4 : 7.0.044 (Gargrove)
Ideal geometry (proteins) : Engh & Huber (2001)
Ideal geometry (DNA, RNA) : Parkinson et al. (1996)
Validation Pipeline (wwPDB-VP) : 2.36

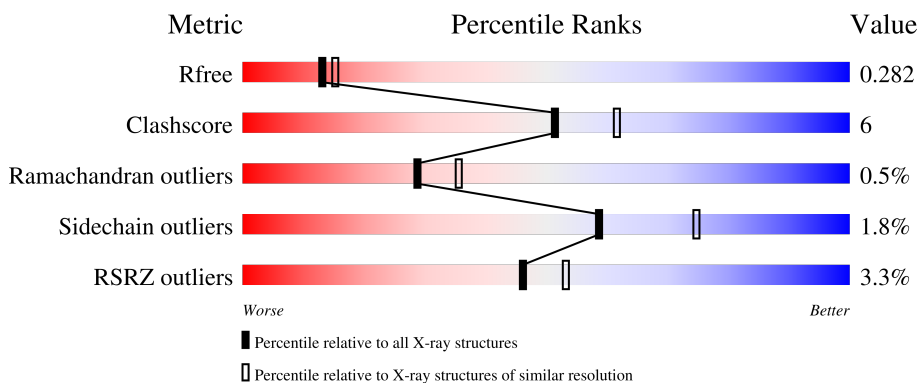
1 Overall quality at a glance

The following experimental techniques were used to determine the structure:

X-RAY DIFFRACTION

The reported resolution of this entry is 2.30 Å.

Percentile scores (ranging between 0-100) for global validation metrics of the entry are shown in the following graphic. The table shows the number of entries on which the scores are based.



Metric	Whole archive (#Entries)	Similar resolution (#Entries, resolution range(Å))
R_{free}	130704	5042 (2.30-2.30)
Clashscore	141614	5643 (2.30-2.30)
Ramachandran outliers	138981	5575 (2.30-2.30)
Sidechain outliers	138945	5575 (2.30-2.30)
RSRZ outliers	127900	4938 (2.30-2.30)

The table below summarises the geometric issues observed across the polymeric chains and their fit to the electron density. The red, orange, yellow and green segments of the lower bar indicate the fraction of residues that contain outliers for ≥ 3 , 2, 1 and 0 types of geometric quality criteria respectively. A grey segment represents the fraction of residues that are not modelled. The numeric value for each fraction is indicated below the corresponding segment, with a dot representing fractions $\leq 5\%$. The upper red bar (where present) indicates the fraction of residues that have poor fit to the electron density. The numeric value is given above the bar.

Mol	Chain	Length	Quality of chain
1	A	276	 3% 87% 12%
2	B	100	 3% 92% 7%
3	C	9	 56% 67% 33%
4	D	195	 5% 85% 13%
5	E	242	 % 88% 12%

2 Entry composition [i](#)

There are 10 unique types of molecules in this entry. The entry contains 7134 atoms, of which 0 are hydrogens and 0 are deuteriums.

In the tables below, the ZeroOcc column contains the number of atoms modelled with zero occupancy, the AltConf column contains the number of residues with at least one atom in alternate conformation and the Trace column contains the number of residues modelled with at most 2 atoms.

- Molecule 1 is a protein called HLA class I histocompatibility antigen, A-2 alpha chain.

Mol	Chain	Residues	Atoms					ZeroOcc	AltConf	Trace
			Total	C	N	O	S			
1	A	276	2253	1408	410	426	9	0	0	0

- Molecule 2 is a protein called Beta-2-microglobulin.

Mol	Chain	Residues	Atoms					ZeroOcc	AltConf	Trace
			Total	C	N	O	S			
2	B	100	834	530	140	159	5	0	0	0

There are 2 discrepancies between the modelled and reference sequences:

Chain	Residue	Modelled	Actual	Comment	Reference
B	0	MET	-	insertion	UNP P61769
B	91	CYS	LYS	conflict	UNP P61769

- Molecule 3 is a protein called Cancer/testis antigen 1B.

Mol	Chain	Residues	Atoms					ZeroOcc	AltConf	Trace
			Total	C	N	O	S			
3	C	9	75	49	11	13	2	0	0	0

- Molecule 4 is a protein called T-Cell Receptor, Alpha Chain.

Mol	Chain	Residues	Atoms					ZeroOcc	AltConf	Trace
			Total	C	N	O	S			
4	D	195	1500	931	253	307	9	0	1	0

- Molecule 5 is a protein called T-Cell Receptor, Beta Chain.

Mol	Chain	Residues	Atoms					ZeroOcc	AltConf	Trace
			Total	C	N	O	S			
5	E	242	1916	1205	329	371	11	0	1	0

- Molecule 6 is SULFATE ION (three-letter code: SO4) (formula: O₄S).



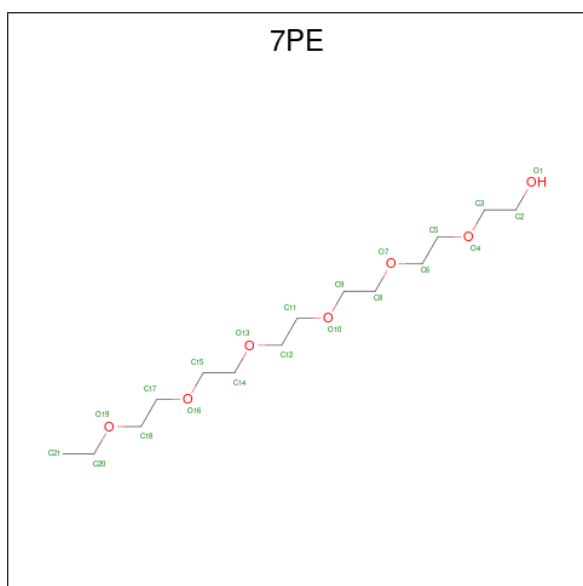
Mol	Chain	Residues	Atoms			ZeroOcc	AltConf
6	A	1	Total	O	S	0	0
			5	4	1		
6	A	1	Total	O	S	0	0
			5	4	1		
6	B	1	Total	O	S	0	0
			5	4	1		
6	D	1	Total	O	S	0	0
			5	4	1		
6	D	1	Total	O	S	0	0
			5	4	1		
6	D	1	Total	O	S	0	0
			5	4	1		
6	E	1	Total	O	S	0	0
			5	4	1		
6	E	1	Total	O	S	0	0
			5	4	1		
6	E	1	Total	O	S	0	0
			5	4	1		

- Molecule 7 is TRIETHYLENE GLYCOL (three-letter code: PGE) (formula: C₆H₁₄O₄).



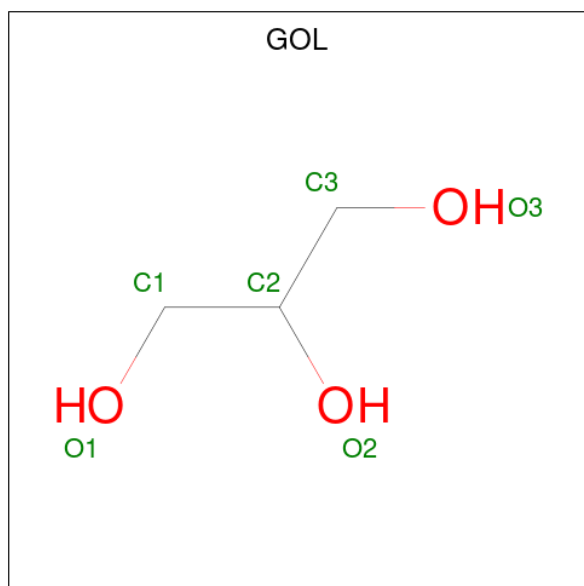
Mol	Chain	Residues	Atoms	ZeroOcc	AltConf
7	A	1	Total C O 10 6 4	0	0
7	A	1	Total C O 10 6 4	0	0
7	E	1	Total C O 10 6 4	0	0

- Molecule 8 is 2-(2-(2-(2-(2-(2-ETHOXYETHOXY)ETHOXY)ETHOXY)ETHOXY)ETHOXY)ETHANOL (three-letter code: 7PE) (formula: C₁₄H₃₀O₇).



Mol	Chain	Residues	Atoms			ZeroOcc	AltConf
8	A	1	Total	C	O	0	0
			21	14	7		

- Molecule 9 is GLYCEROL (three-letter code: GOL) (formula: $C_3H_8O_3$).



Mol	Chain	Residues	Atoms			ZeroOcc	AltConf
9	A	1	Total	C	O	0	0
			6	3	3		
9	A	1	Total	C	O	0	0
			6	3	3		
9	A	1	Total	C	O	0	0
			6	3	3		
9	B	1	Total	C	O	0	0
			6	3	3		
9	B	1	Total	C	O	0	0
			6	3	3		
9	B	1	Total	C	O	0	0
			6	3	3		
9	D	1	Total	C	O	0	0
			6	3	3		
9	E	1	Total	C	O	0	0
			6	3	3		
9	E	1	Total	C	O	0	0
			6	3	3		
9	E	1	Total	C	O	0	0
			6	3	3		
9	E	1	Total	C	O	0	0
			6	3	3		

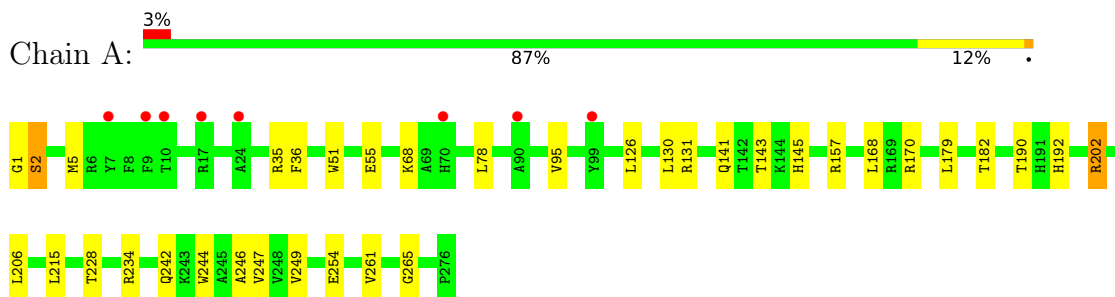
- Molecule 10 is water.

Mol	Chain	Residues	Atoms		ZeroOcc	AltConf
10	A	127	Total 127	O 127	0	0
10	B	48	Total 48	O 48	0	0
10	C	8	Total 8	O 8	0	0
10	D	71	Total 71	O 71	0	0
10	E	140	Total 140	O 140	0	0

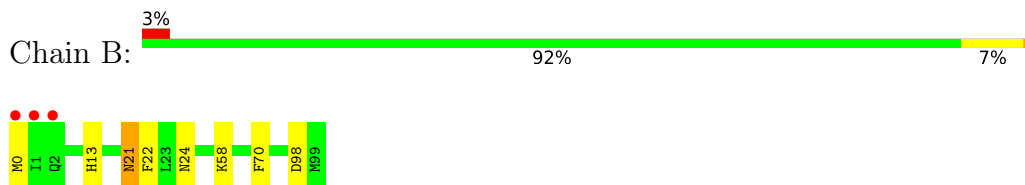
3 Residue-property plots [i](#)

These plots are drawn for all protein, RNA, DNA and oligosaccharide chains in the entry. The first graphic for a chain summarises the proportions of the various outlier classes displayed in the second graphic. The second graphic shows the sequence view annotated by issues in geometry and electron density. Residues are color-coded according to the number of geometric quality criteria for which they contain at least one outlier: green = 0, yellow = 1, orange = 2 and red = 3 or more. A red dot above a residue indicates a poor fit to the electron density ($RSRZ > 2$). Stretches of 2 or more consecutive residues without any outlier are shown as a green connector. Residues present in the sample, but not in the model, are shown in grey.

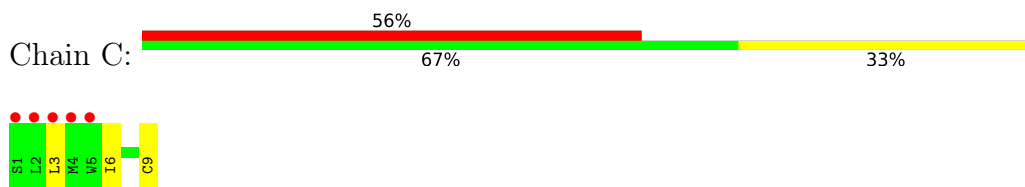
- Molecule 1: HLA class I histocompatibility antigen, A-2 alpha chain



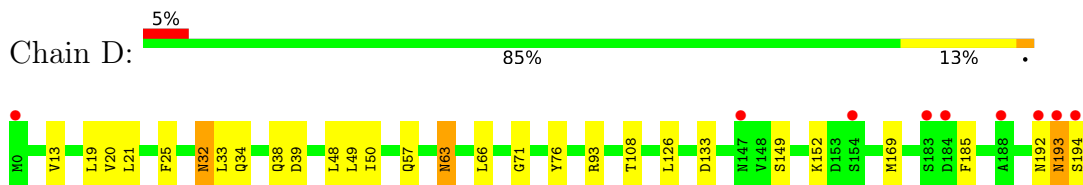
- Molecule 2: Beta-2-microglobulin



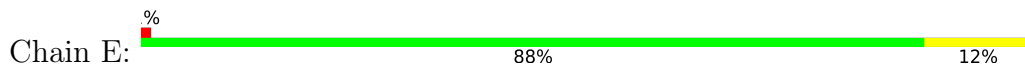
- Molecule 3: Cancer/testis antigen 1B



- Molecule 4: T-Cell Receptor, Alpha Chain



- Molecule 5: T-Cell Receptor, Beta Chain





4 Data and refinement statistics

Property	Value	Source
Space group	P 1 21 1	Depositor
Cell constants a, b, c, α , β , γ	74.75Å 52.91Å 119.90Å 90.00° 97.94° 90.00°	Depositor
Resolution (Å)	118.68 – 2.30 29.63 – 2.30	Depositor EDS
% Data completeness (in resolution range)	(Not available) (118.68-2.30) 91.3 (29.63-2.30)	Depositor EDS
R_{merge}	0.15	Depositor
R_{sym}	0.15	Depositor
$\langle I/\sigma(I) \rangle$ ¹	1.73 (at 2.31Å)	Xtrriage
Refinement program	REFMAC	Depositor
R, R_{free}	0.192 , 0.283 0.196 , 0.282	Depositor DCC
R_{free} test set	1918 reflections (5.04%)	wwPDB-VP
Wilson B-factor (Å ²)	31.2	Xtrriage
Anisotropy	0.325	Xtrriage
Bulk solvent k_{sol} (e/Å ³), B_{sol} (Å ²)	0.33 , 39.0	EDS
L-test for twinning ²	$\langle L \rangle = 0.48$, $\langle L^2 \rangle = 0.31$	Xtrriage
Estimated twinning fraction	No twinning to report.	Xtrriage
F_o, F_c correlation	0.94	EDS
Total number of atoms	7134	wwPDB-VP
Average B, all atoms (Å ²)	19.0	wwPDB-VP

Xtrriage's analysis on translational NCS is as follows: *The largest off-origin peak in the Patterson function is 5.35% of the height of the origin peak. No significant pseudotranslation is detected.*

¹Intensities estimated from amplitudes.

²Theoretical values of $\langle |L| \rangle$, $\langle L^2 \rangle$ for acentric reflections are 0.5, 0.333 respectively for untwinned datasets, and 0.375, 0.2 for perfectly twinned datasets.

5 Model quality [i](#)

5.1 Standard geometry [i](#)

Bond lengths and bond angles in the following residue types are not validated in this section: GOL, PGE, 7PE, SO4

The Z score for a bond length (or angle) is the number of standard deviations the observed value is removed from the expected value. A bond length (or angle) with $|Z| > 5$ is considered an outlier worth inspection. RMSZ is the root-mean-square of all Z scores of the bond lengths (or angles).

Mol	Chain	Bond lengths		Bond angles	
		RMSZ	# Z >5	RMSZ	# Z >5
1	A	0.60	0/2319	0.69	0/3149
2	B	0.60	0/857	0.72	0/1159
3	C	0.61	0/76	0.91	0/101
4	D	0.53	0/1528	0.69	0/2075
5	E	0.62	0/1967	0.78	1/2678 (0.0%)
All	All	0.59	0/6747	0.73	1/9162 (0.0%)

There are no bond length outliers.

All (1) bond angle outliers are listed below:

Mol	Chain	Res	Type	Atoms	Z	Observed(°)	Ideal(°)
5	E	107	ARG	NE-CZ-NH1	7.62	124.11	120.30

There are no chirality outliers.

There are no planarity outliers.

5.2 Too-close contacts [i](#)

In the following table, the Non-H and H(model) columns list the number of non-hydrogen atoms and hydrogen atoms in the chain respectively. The H(added) column lists the number of hydrogen atoms added and optimized by MolProbity. The Clashes column lists the number of clashes within the asymmetric unit, whereas Symm-Clashes lists symmetry-related clashes.

Mol	Chain	Non-H	H(model)	H(added)	Clashes	Symm-Clashes
1	A	2253	0	2103	26	0
2	B	834	0	795	6	0
3	C	75	0	79	2	0
4	D	1500	0	1446	20	0
5	E	1916	0	1813	22	0

Continued on next page...

Continued from previous page...

Mol	Chain	Non-H	H(model)	H(added)	Clashes	Symm-Clashes
6	A	10	0	0	0	0
6	B	5	0	0	0	0
6	D	15	0	0	0	0
6	E	15	0	0	0	0
7	A	20	0	28	0	0
7	E	10	0	14	0	0
8	A	21	0	30	0	0
9	A	18	0	24	1	0
9	B	18	0	24	1	0
9	D	6	0	8	1	0
9	E	24	0	32	0	0
10	A	127	0	0	0	0
10	B	48	0	0	1	0
10	C	8	0	0	0	0
10	D	71	0	0	0	0
10	E	140	0	0	2	0
All	All	7134	0	6396	73	0

The all-atom clashscore is defined as the number of clashes found per 1000 atoms (including hydrogen atoms). The all-atom clashscore for this structure is 6.

All (73) close contacts within the same asymmetric unit are listed below, sorted by their clash magnitude.

Atom-1	Atom-2	Interatomic distance (Å)	Clash overlap (Å)
4:D:49:LEU:O	4:D:57:GLN:NE2	2.07	0.87
4:D:32:ASN:C	4:D:32:ASN:HD22	1.80	0.85
4:D:13:VAL:HG21	4:D:19:LEU:HD21	1.57	0.84
5:E:109:THR:HG22	5:E:111:LEU:CD1	2.19	0.72
4:D:38:GLN:HE22	5:E:35:GLN:HE22	1.37	0.69
4:D:50:ILE:HD12	4:D:66:LEU:HB2	1.74	0.68
5:E:9:GLN:HB3	5:E:108:LEU:HD13	1.82	0.62
5:E:42:ARG:CZ	5:E:58:VAL:HG11	2.30	0.62
5:E:109:THR:HG22	5:E:111:LEU:HD12	1.81	0.61
2:B:13:HIS:H	2:B:21:ASN:HD21	1.48	0.61
1:A:5:MET:HB2	1:A:168:LEU:HD13	1.83	0.60
1:A:141:GLN:O	1:A:145:HIS:ND1	2.34	0.60
4:D:48:LEU:HD22	4:D:57:GLN:HG2	1.83	0.60
5:E:107:ARG:HD2	5:E:151:HIS:CE1	2.36	0.59
4:D:63:ASN:N	4:D:63:ASN:HD22	2.01	0.58
5:E:109:THR:HG22	5:E:111:LEU:HD11	1.85	0.58
4:D:32:ASN:C	4:D:32:ASN:ND2	2.53	0.58

Continued on next page...

Continued from previous page...

Atom-1	Atom-2	Interatomic distance (Å)	Clash overlap (Å)
1:A:234:ARG:HE	1:A:242:GLN:HE21	1.53	0.57
4:D:149:SER:OG	4:D:193:ASN:HA	2.05	0.57
5:E:107:ARG:CG	5:E:107:ARG:HH11	2.18	0.56
1:A:249:VAL:HG21	1:A:254:GLU:HB3	1.88	0.55
2:B:21:ASN:ND2	2:B:22:PHE:H	2.06	0.54
2:B:21:ASN:HD22	2:B:22:PHE:H	1.56	0.53
2:B:58:LYS:NZ	2:B:58:LYS:HB3	2.23	0.53
1:A:55:GLU:OE2	1:A:170:ARG:NH2	2.43	0.52
5:E:63:ASN:OD1	5:E:77:LEU:HD11	2.11	0.51
1:A:126:LEU:HD23	1:A:130:LEU:HD22	1.93	0.50
5:E:107:ARG:HH11	5:E:107:ARG:HG3	1.75	0.50
4:D:126:LEU:N	4:D:126:LEU:HD12	2.25	0.50
5:E:44:ILE:HG22	5:E:45:HIS:CD2	2.47	0.50
1:A:190:THR:OG1	1:A:202:ARG:HB3	2.12	0.50
1:A:35:ARG:HG2	1:A:36:PHE:N	2.27	0.50
1:A:182:THR:HG21	1:A:265:GLY:HA2	1.93	0.50
4:D:169:MET:HE2	10:E:725:HOH:O	2.11	0.50
1:A:228:THR:HG22	1:A:247:VAL:HG23	1.94	0.49
4:D:33:LEU:C	4:D:33:LEU:HD23	2.33	0.49
1:A:215:LEU:HD22	1:A:261:VAL:HG22	1.94	0.49
1:A:202:ARG:HD3	1:A:246:ALA:HB2	1.95	0.48
4:D:76:TYR:HB3	9:D:606:GOL:H2	1.95	0.48
4:D:32:ASN:HD21	4:D:93:ARG:HG2	1.78	0.48
1:A:68:LYS:HZ2	9:A:605:GOL:H31	1.79	0.48
1:A:78:LEU:HD23	1:A:95:VAL:HG23	1.96	0.47
5:E:23:GLN:NE2	5:E:25:MET:H	2.12	0.47
1:A:182:THR:CG2	1:A:265:GLY:HA2	2.44	0.47
1:A:192:HIS:NE2	2:B:98:ASP:OD2	2.40	0.47
4:D:63:ASN:ND2	4:D:76:TYR:HB2	2.29	0.47
1:A:51:TRP:CE2	1:A:179:LEU:HD11	2.50	0.47
1:A:215:LEU:CD2	1:A:261:VAL:HG22	2.46	0.46
5:E:197:PHE:O	5:E:203:ASN:ND2	2.45	0.46
5:E:42:ARG:NH1	5:E:58:VAL:HG11	2.29	0.46
5:E:167:VAL:HG22	5:E:191:LEU:HD13	1.98	0.46
1:A:143:THR:HG23	3:C:9:CYS:HA	1.98	0.46
4:D:20:VAL:O	4:D:20:VAL:HG23	2.17	0.45
4:D:33:LEU:HD23	4:D:34:GLN:N	2.31	0.45
1:A:182:THR:CG2	1:A:265:GLY:CA	2.95	0.45
5:E:148:TYR:CZ	5:E:182:ASP:HA	2.52	0.44
5:E:177:GLN:CB	5:E:180:LEU:HD12	2.47	0.44
1:A:206:LEU:HD11	9:B:609:GOL:H32	2.00	0.43

Continued on next page...

Continued from previous page...

Atom-1	Atom-2	Interatomic distance (Å)	Clash overlap (Å)
4:D:25:PHE:CE1	4:D:71:GLY:HA2	2.53	0.43
1:A:182:THR:HG22	1:A:265:GLY:CA	2.49	0.43
5:E:19:LEU:HD21	5:E:108:LEU:HD21	2.00	0.43
1:A:202:ARG:HD2	1:A:244:TRP:CD2	2.54	0.42
1:A:1:GLY:O	1:A:2:SER:CB	2.67	0.42
2:B:24:ASN:ND2	10:B:628:HOH:O	2.35	0.42
5:E:107:ARG:NE	10:E:640:HOH:O	2.52	0.42
3:C:3:LEU:HD23	3:C:6:ILE:CD1	2.50	0.41
4:D:192:ASN:O	4:D:194:SER:N	2.48	0.41
5:E:147:PHE:CE2	5:E:185:TYR:HB2	2.56	0.40
5:E:181:ASN:O	5:E:182:ASP:HB2	2.21	0.40
1:A:1:GLY:O	1:A:2:SER:HB3	2.21	0.40
1:A:130:LEU:HB3	1:A:157:ARG:HG2	2.04	0.40
4:D:21:LEU:HD22	4:D:108:THR:HG21	2.03	0.40
5:E:190:ARG:N	5:E:190:ARG:HD2	2.37	0.40

There are no symmetry-related clashes.

5.3 Torsion angles [i](#)

5.3.1 Protein backbone [i](#)

In the following table, the Percentiles column shows the percent Ramachandran outliers of the chain as a percentile score with respect to all X-ray entries followed by that with respect to entries of similar resolution.

The Analysed column shows the number of residues for which the backbone conformation was analysed, and the total number of residues.

Mol	Chain	Analysed	Favoured	Allowed	Outliers	Percentiles	
1	A	274/276 (99%)	264 (96%)	9 (3%)	1 (0%)	34	42
2	B	98/100 (98%)	97 (99%)	1 (1%)	0	100	100
3	C	7/9 (78%)	7 (100%)	0	0	100	100
4	D	194/195 (100%)	182 (94%)	9 (5%)	3 (2%)	10	10
5	E	241/242 (100%)	230 (95%)	11 (5%)	0	100	100
All	All	814/822 (99%)	780 (96%)	30 (4%)	4 (0%)	29	35

All (4) Ramachandran outliers are listed below:

Mol	Chain	Res	Type
4	D	133	ASP
1	A	2	SER
4	D	193	ASN
4	D	185	PHE

5.3.2 Protein sidechains [i](#)

In the following table, the Percentiles column shows the percent sidechain outliers of the chain as a percentile score with respect to all X-ray entries followed by that with respect to entries of similar resolution.

The Analysed column shows the number of residues for which the sidechain conformation was analysed, and the total number of residues.

Mol	Chain	Analysed	Rotameric	Outliers	Percentiles	
1	A	232/232 (100%)	230 (99%)	2 (1%)	78	89
2	B	95/95 (100%)	92 (97%)	3 (3%)	39	54
3	C	9/9 (100%)	9 (100%)	0	100	100
4	D	173/172 (101%)	169 (98%)	4 (2%)	50	67
5	E	210/209 (100%)	206 (98%)	4 (2%)	57	73
All	All	719/717 (100%)	706 (98%)	13 (2%)	59	75

All (13) residues with a non-rotameric sidechain are listed below:

Mol	Chain	Res	Type
1	A	131	ARG
1	A	202	ARG
2	B	0	MET
2	B	21	ASN
2	B	70	PHE
4	D	32	ASN
4	D	39	ASP
4	D	63	ASN
4	D	152	LYS
5	E	0	MET
5	E	23	GLN
5	E	96	ASN
5	E	107	ARG

Sometimes sidechains can be flipped to improve hydrogen bonding and reduce clashes. All (38) such sidechains are listed below:

Mol	Chain	Res	Type
1	A	70	HIS
1	A	86	ASN
1	A	141	GLN
1	A	155	GLN
1	A	174	ASN
1	A	180	GLN
1	A	224	GLN
1	A	226	GLN
1	A	242	GLN
1	A	253	GLN
1	A	255	GLN
2	B	2	GLN
2	B	21	ASN
2	B	24	ASN
2	B	89	GLN
4	D	6	GLN
4	D	18	ASN
4	D	32	ASN
4	D	54	GLN
4	D	57	GLN
4	D	63	ASN
4	D	81	GLN
4	D	117	GLN
4	D	125	GLN
4	D	145	GLN
4	D	147	ASN
4	D	193	ASN
5	E	9	GLN
5	E	15	GLN
5	E	23	GLN
5	E	26	ASN
5	E	35	GLN
5	E	55	GLN
5	E	60	ASN
5	E	96	ASN
5	E	151	HIS
5	E	172	GLN
5	E	181	ASN

5.3.3 RNA [i](#)

There are no RNA molecules in this entry.

5.4 Non-standard residues in protein, DNA, RNA chains [i](#)

There are no non-standard protein/DNA/RNA residues in this entry.

5.5 Carbohydrates [i](#)

There are no monosaccharides in this entry.

5.6 Ligand geometry [i](#)

24 ligands are modelled in this entry.

In the following table, the Counts columns list the number of bonds (or angles) for which Mogul statistics could be retrieved, the number of bonds (or angles) that are observed in the model and the number of bonds (or angles) that are defined in the Chemical Component Dictionary. The Link column lists molecule types, if any, to which the group is linked. The Z score for a bond length (or angle) is the number of standard deviations the observed value is removed from the expected value. A bond length (or angle) with $|Z| > 2$ is considered an outlier worth inspection. RMSZ is the root-mean-square of all Z scores of the bond lengths (or angles).

Mol	Type	Chain	Res	Link	Bond lengths			Bond angles		
					Counts	RMSZ	$\# Z > 2$	Counts	RMSZ	$\# Z > 2$
9	GOL	E	607	-	5,5,5	0.45	0	5,5,5	0.19	0
9	GOL	E	611	-	5,5,5	0.51	0	5,5,5	0.59	0
6	SO4	D	401	-	4,4,4	0.16	0	6,6,6	0.06	0
6	SO4	E	406	-	4,4,4	0.16	0	6,6,6	0.10	0
9	GOL	A	602	-	5,5,5	0.67	0	5,5,5	0.37	0
8	7PE	A	504	-	20,20,20	0.81	0	19,19,19	0.52	0
6	SO4	D	409	-	4,4,4	0.09	0	6,6,6	0.14	0
7	PGE	A	501	-	9,9,9	0.58	0	8,8,8	0.27	0
7	PGE	A	502	-	9,9,9	0.70	0	8,8,8	0.33	0
9	GOL	A	605	-	5,5,5	0.25	0	5,5,5	0.25	0
9	GOL	B	609	-	5,5,5	0.38	0	5,5,5	0.33	0
7	PGE	E	503	-	9,9,9	0.54	0	8,8,8	0.34	0
6	SO4	A	407	-	4,4,4	0.15	0	6,6,6	0.09	0
6	SO4	E	402	-	4,4,4	0.14	0	6,6,6	0.06	0
9	GOL	B	603	-	5,5,5	0.38	0	5,5,5	0.29	0
9	GOL	B	601	-	5,5,5	0.57	0	5,5,5	0.21	0
9	GOL	A	610	-	5,5,5	0.55	0	5,5,5	0.20	0
9	GOL	E	608	-	5,5,5	0.52	0	5,5,5	0.42	0
6	SO4	E	403	-	4,4,4	0.11	0	6,6,6	0.14	0
6	SO4	D	404	-	4,4,4	0.12	0	6,6,6	0.11	0
9	GOL	E	604	-	5,5,5	0.60	0	5,5,5	0.47	0
9	GOL	D	606	-	5,5,5	0.52	0	5,5,5	0.31	0

Mol	Type	Chain	Res	Link	Bond lengths			Bond angles		
					Counts	RMSZ	# Z > 2	Counts	RMSZ	# Z > 2
6	SO4	A	405	-	4,4,4	0.17	0	6,6,6	0.06	0
6	SO4	B	408	-	4,4,4	0.19	0	6,6,6	0.16	0

In the following table, the Chirals column lists the number of chiral outliers, the number of chiral centers analysed, the number of these observed in the model and the number defined in the Chemical Component Dictionary. Similar counts are reported in the Torsion and Rings columns. '-' means no outliers of that kind were identified.

Mol	Type	Chain	Res	Link	Chirals	Torsions	Rings
9	GOL	E	608	-	-	4/4/4/4	-
9	GOL	E	604	-	-	2/4/4/4	-
9	GOL	E	607	-	-	2/4/4/4	-
9	GOL	E	611	-	-	2/4/4/4	-
9	GOL	D	606	-	-	0/4/4/4	-
7	PGE	E	503	-	-	5/7/7/7	-
9	GOL	B	603	-	-	1/4/4/4	-
9	GOL	A	605	-	-	3/4/4/4	-
9	GOL	A	602	-	-	2/4/4/4	-
8	7PE	A	504	-	-	11/18/18/18	-
9	GOL	B	601	-	-	2/4/4/4	-
7	PGE	A	501	-	-	3/7/7/7	-
9	GOL	B	609	-	-	2/4/4/4	-
9	GOL	A	610	-	-	4/4/4/4	-
7	PGE	A	502	-	-	2/7/7/7	-

There are no bond length outliers.

There are no bond angle outliers.

There are no chirality outliers.

All (45) torsion outliers are listed below:

Mol	Chain	Res	Type	Atoms
9	A	602	GOL	O1-C1-C2-C3
9	A	610	GOL	O1-C1-C2-C3
9	A	610	GOL	C1-C2-C3-O3
9	B	601	GOL	C1-C2-C3-O3
9	B	609	GOL	O1-C1-C2-C3
9	E	604	GOL	C1-C2-C3-O3
9	E	608	GOL	C1-C2-C3-O3

Continued on next page...

Continued from previous page...

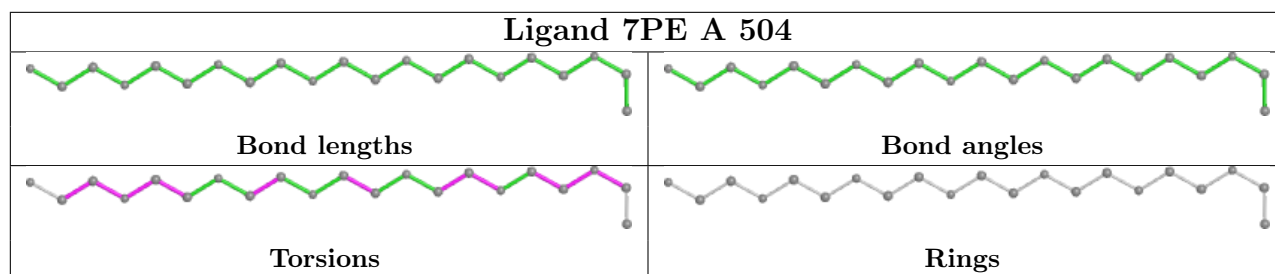
Mol	Chain	Res	Type	Atoms
9	E	611	GOL	C1-C2-C3-O3
8	A	504	7PE	O16-C17-C18-O19
7	A	501	PGE	O2-C3-C4-O3
7	E	503	PGE	O2-C3-C4-O3
9	A	610	GOL	O2-C2-C3-O3
9	B	609	GOL	O1-C1-C2-O2
9	E	608	GOL	O2-C2-C3-O3
7	A	501	PGE	O1-C1-C2-O2
8	A	504	7PE	O4-C5-C6-O7
9	A	605	GOL	O1-C1-C2-C3
9	E	608	GOL	O1-C1-C2-C3
7	E	503	PGE	O1-C1-C2-O2
9	A	602	GOL	O1-C1-C2-O2
9	A	605	GOL	O1-C1-C2-O2
9	A	610	GOL	O1-C1-C2-O2
9	B	601	GOL	O2-C2-C3-O3
9	E	604	GOL	O2-C2-C3-O3
9	E	611	GOL	O2-C2-C3-O3
7	A	502	PGE	O1-C1-C2-O2
8	A	504	7PE	C6-C5-O4-C3
7	E	503	PGE	O3-C5-C6-O4
8	A	504	7PE	O1-C2-C3-O4
9	E	607	GOL	O1-C1-C2-O2
7	E	503	PGE	C6-C5-O3-C4
7	A	501	PGE	C6-C5-O3-C4
7	A	502	PGE	C1-C2-O2-C3
8	A	504	7PE	C17-C18-O19-C20
8	A	504	7PE	O7-C8-C9-O10
8	A	504	7PE	C14-C15-O16-C17
9	E	608	GOL	O1-C1-C2-O2
9	A	605	GOL	C1-C2-C3-O3
8	A	504	7PE	O10-C11-C12-O13
8	A	504	7PE	C21-C20-O19-C18
8	A	504	7PE	C2-C3-O4-C5
7	E	503	PGE	C4-C3-O2-C2
9	B	603	GOL	O1-C1-C2-C3
9	E	607	GOL	O1-C1-C2-C3
8	A	504	7PE	O13-C14-C15-O16

There are no ring outliers.

3 monomers are involved in 3 short contacts:

Mol	Chain	Res	Type	Clashes	Symm-Clashes
9	A	605	GOL	1	0
9	B	609	GOL	1	0
9	D	606	GOL	1	0

The following is a two-dimensional graphical depiction of Mogul quality analysis of bond lengths, bond angles, torsion angles, and ring geometry for all instances of the Ligand of Interest. In addition, ligands with molecular weight > 250 and outliers as shown on the validation Tables will also be included. For torsion angles, if less than 5% of the Mogul distribution of torsion angles is within 10 degrees of the torsion angle in question, then that torsion angle is considered an outlier. Any bond that is central to one or more torsion angles identified as an outlier by Mogul will be highlighted in the graph. For rings, the root-mean-square deviation (RMSD) between the ring in question and similar rings identified by Mogul is calculated over all ring torsion angles. If the average RMSD is greater than 60 degrees and the minimal RMSD between the ring in question and any Mogul-identified rings is also greater than 60 degrees, then that ring is considered an outlier. The outliers are highlighted in purple. The color gray indicates Mogul did not find sufficient equivalents in the CSD to analyse the geometry.



5.7 Other polymers [i](#)

There are no such residues in this entry.

5.8 Polymer linkage issues [i](#)

There are no chain breaks in this entry.

6 Fit of model and data

6.1 Protein, DNA and RNA chains

In the following table, the column labelled ‘#RSRZ > 2’ contains the number (and percentage) of RSRZ outliers, followed by percent RSRZ outliers for the chain as percentile scores relative to all X-ray entries and entries of similar resolution. The OWAB column contains the minimum, median, 95th percentile and maximum values of the occupancy-weighted average B-factor per residue. The column labelled ‘Q < 0.9’ lists the number of (and percentage) of residues with an average occupancy less than 0.9.

Mol	Chain	Analysed	<RSRZ>	#RSRZ>2	OWAB(Å ²)	Q<0.9
1	A	276/276 (100%)	0.08	8 (2%) 51 58	5, 18, 41, 55	0
2	B	100/100 (100%)	-0.13	3 (3%) 50 57	4, 16, 32, 54	0
3	C	9/9 (100%)	2.41	5 (55%) 0 0	2, 2, 7, 8	0
4	D	195/195 (100%)	0.23	9 (4%) 32 39	8, 20, 45, 86	0
5	E	242/242 (100%)	-0.22	2 (0%) 86 89	4, 14, 30, 53	0
All	All	822/822 (100%)	0.03	27 (3%) 46 53	2, 17, 40, 86	0

All (27) RSRZ outliers are listed below:

Mol	Chain	Res	Type	RSRZ
5	E	0	MET	8.0
4	D	194	SER	7.7
4	D	0	MET	6.8
1	A	17	ARG	4.6
4	D	192	ASN	4.6
3	C	2	LEU	4.6
2	B	1	ILE	4.4
3	C	3	LEU	3.4
3	C	5	TRP	3.3
3	C	1	SER	3.1
2	B	0	MET	2.8
3	C	4	MET	2.8
1	A	9	PHE	2.7
1	A	7	TYR	2.7
4	D	193	ASN	2.7
1	A	24	ALA	2.6
4	D	183	SER	2.4
4	D	154	SER	2.4
4	D	184	ASP	2.3
2	B	2	GLN	2.3

Continued on next page...

Continued from previous page...

Mol	Chain	Res	Type	RSRZ
1	A	70	HIS	2.2
5	E	33	TYR	2.2
4	D	188	ALA	2.2
4	D	147	ASN	2.1
1	A	10	THR	2.1
1	A	99	TYR	2.1
1	A	90	ALA	2.0

6.2 Non-standard residues in protein, DNA, RNA chains [i](#)

There are no non-standard protein/DNA/RNA residues in this entry.

6.3 Carbohydrates [i](#)

There are no monosaccharides in this entry.

6.4 Ligands [i](#)

In the following table, the Atoms column lists the number of modelled atoms in the group and the number defined in the chemical component dictionary. The B-factors column lists the minimum, median, 95th percentile and maximum values of B factors of atoms in the group. The column labelled 'Q< 0.9' lists the number of atoms with occupancy less than 0.9.

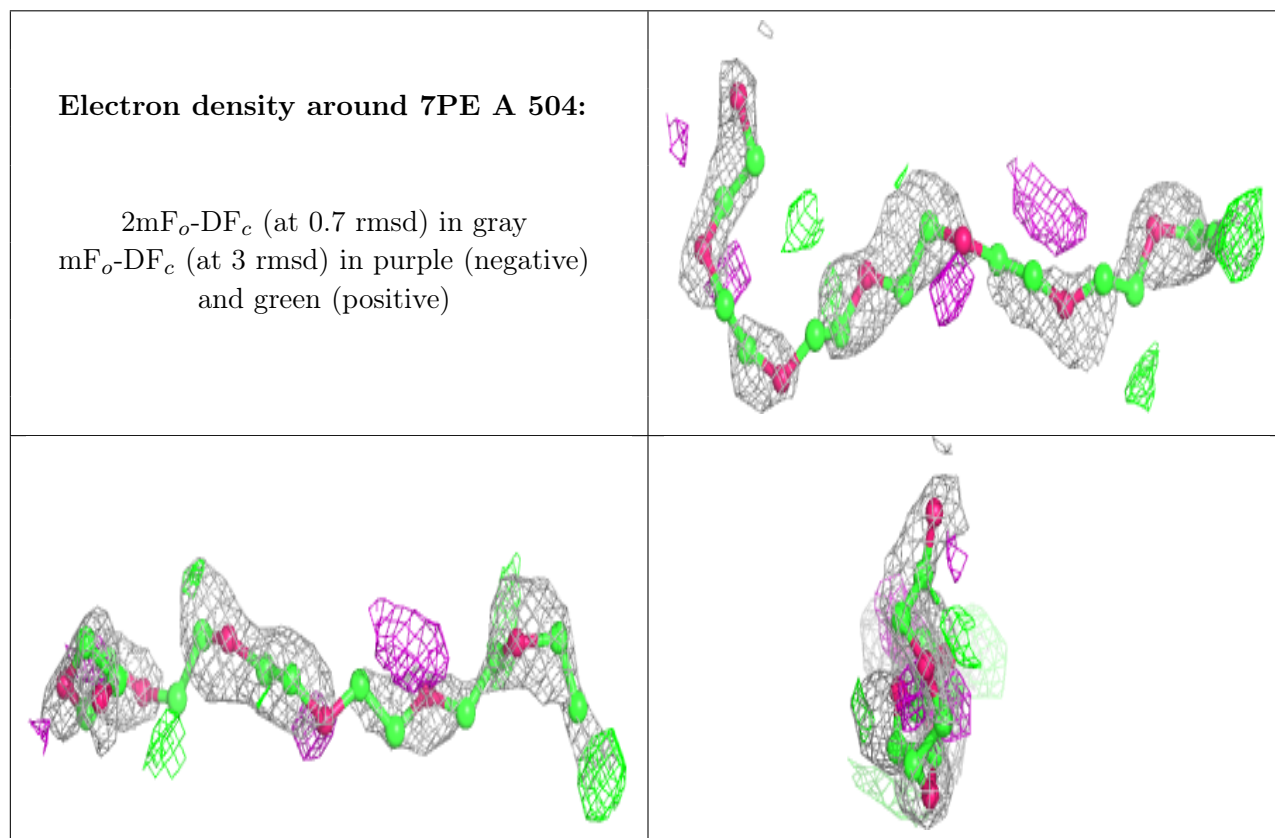
Mol	Type	Chain	Res	Atoms	RSCC	RSR	B-factors(Å ²)	Q<0.9
8	7PE	A	504	21/21	0.66	0.38	40,56,63,69	0
7	PGE	A	502	10/10	0.71	0.32	27,57,65,67	0
6	SO4	D	404	5/5	0.76	0.33	75,76,88,94	0
7	PGE	A	501	10/10	0.82	0.36	26,41,51,53	0
9	GOL	A	610	6/6	0.83	0.29	35,46,53,53	0
6	SO4	A	407	5/5	0.85	0.42	80,83,90,95	0
9	GOL	E	611	6/6	0.85	0.44	2,2,2,2	6
6	SO4	D	409	5/5	0.86	0.34	67,72,73,76	0
9	GOL	E	608	6/6	0.88	0.15	24,38,44,51	0
9	GOL	B	609	6/6	0.89	0.25	31,40,44,46	0
6	SO4	E	406	5/5	0.89	0.24	20,23,36,39	5
9	GOL	B	601	6/6	0.89	0.23	18,19,21,26	6
6	SO4	E	403	5/5	0.90	0.23	56,71,79,79	0
6	SO4	B	408	5/5	0.90	0.45	2,2,14,20	5
7	PGE	E	503	10/10	0.90	0.15	17,26,33,37	0
9	GOL	A	605	6/6	0.91	0.21	3,15,18,20	6

Continued on next page...

Continued from previous page...

Mol	Type	Chain	Res	Atoms	RSCC	RSR	B-factors(\AA^2)	Q<0.9
9	GOL	D	606	6/6	0.91	0.38	5,15,17,21	6
6	SO4	E	402	5/5	0.91	0.29	74,78,82,83	0
9	GOL	A	602	6/6	0.91	0.20	4,10,20,23	6
9	GOL	B	603	6/6	0.92	0.20	7,11,18,22	6
6	SO4	A	405	5/5	0.94	0.28	55,70,74,77	0
9	GOL	E	604	6/6	0.95	0.18	2,10,16,17	6
9	GOL	E	607	6/6	0.96	0.09	14,18,26,36	0
6	SO4	D	401	5/5	0.97	0.26	49,51,59,60	0

The following is a graphical depiction of the model fit to experimental electron density of all instances of the Ligand of Interest. In addition, ligands with molecular weight > 250 and outliers as shown on the geometry validation Tables will also be included. Each fit is shown from different orientation to approximate a three-dimensional view.



6.5 Other polymers [\(i\)](#)

There are no such residues in this entry.