



# Full wwPDB X-ray Structure Validation Report ⓘ

Jan 29, 2024 – 07:54 pm GMT

PDB ID : 8PYX  
Title : Amide bond synthetase from *Streptomyces hindustanus* K492H mutant in complex with Adenosine  
Authors : Tang, Q.; Grogan, G.  
Deposited on : 2023-07-26  
Resolution : 2.02 Å (reported)

This is a Full wwPDB X-ray Structure Validation Report for a publicly released PDB entry.

We welcome your comments at [validation@mail.wwpdb.org](mailto:validation@mail.wwpdb.org)

A user guide is available at

<https://www.wwpdb.org/validation/2017/XrayValidationReportHelp>

with specific help available everywhere you see the ⓘ symbol.

The types of validation reports are described at

<http://www.wwpdb.org/validation/2017/FAQs#types>.

---

The following versions of software and data (see [references ⓘ](#)) were used in the production of this report:

MolProbity : 4.02b-467  
Mogul : 1.8.4, CSD as541be (2020)  
Xtriage (Phenix) : 1.13  
EDS : 2.36  
buster-report : 1.1.7 (2018)  
Percentile statistics : 20191225.v01 (using entries in the PDB archive December 25th 2019)  
Refmac : 5.8.0158  
CCP4 : 7.0.044 (Gargrove)  
Ideal geometry (proteins) : Engh & Huber (2001)  
Ideal geometry (DNA, RNA) : Parkinson et al. (1996)  
Validation Pipeline (wwPDB-VP) : 2.36

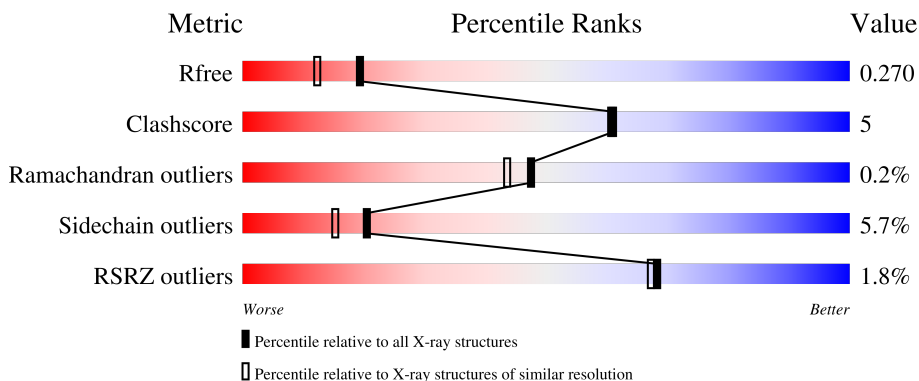
# 1 Overall quality at a glance

The following experimental techniques were used to determine the structure:

*X-RAY DIFFRACTION*

The reported resolution of this entry is 2.02 Å.

Percentile scores (ranging between 0-100) for global validation metrics of the entry are shown in the following graphic. The table shows the number of entries on which the scores are based.



Metric	Whole archive (#Entries)	Similar resolution (#Entries, resolution range(Å))
$R_{free}$	130704	10434 (2.04-2.00)
Clashscore	141614	11643 (2.04-2.00)
Ramachandran outliers	138981	11493 (2.04-2.00)
Sidechain outliers	138945	11492 (2.04-2.00)
RSRZ outliers	127900	10220 (2.04-2.00)

The table below summarises the geometric issues observed across the polymeric chains and their fit to the electron density. The red, orange, yellow and green segments of the lower bar indicate the fraction of residues that contain outliers for  $\geq 3$ , 2, 1 and 0 types of geometric quality criteria respectively. A grey segment represents the fraction of residues that are not modelled. The numeric value for each fraction is indicated below the corresponding segment, with a dot representing fractions  $\leq 5\%$ . The upper red bar (where present) indicates the fraction of residues that have poor fit to the electron density. The numeric value is given above the bar.

Mol	Chain	Length	Quality of chain
1	A	508	 2% 85% 11% ..
1	B	508	 % 83% 12% ..

## 2 Entry composition [i](#)

There are 4 unique types of molecules in this entry. The entry contains 7985 atoms, of which 0 are hydrogens and 0 are deuteriums.

In the tables below, the ZeroOcc column contains the number of atoms modelled with zero occupancy, the AltConf column contains the number of residues with at least one atom in alternate conformation and the Trace column contains the number of residues modelled with at most 2 atoms.

- Molecule 1 is a protein called Fatty-acyl-CoA synthase.

Mol	Chain	Residues	Atoms					ZeroOcc	AltConf	Trace
			Total	C	N	O	S			
1	A	499	3716	2351	645	708	12	0	2	0
1	B	494	3695	2339	644	700	12	0	2	0

There are 2 discrepancies between the modelled and reference sequences:

Chain	Residue	Modelled	Actual	Comment	Reference
A	492	HIS	LYS	engineered mutation	UNP A0A1M5ABR5
B	492	HIS	LYS	engineered mutation	UNP A0A1M5ABR5

- Molecule 2 is SULFATE ION (three-letter code: SO4) (formula: O<sub>4</sub>S).



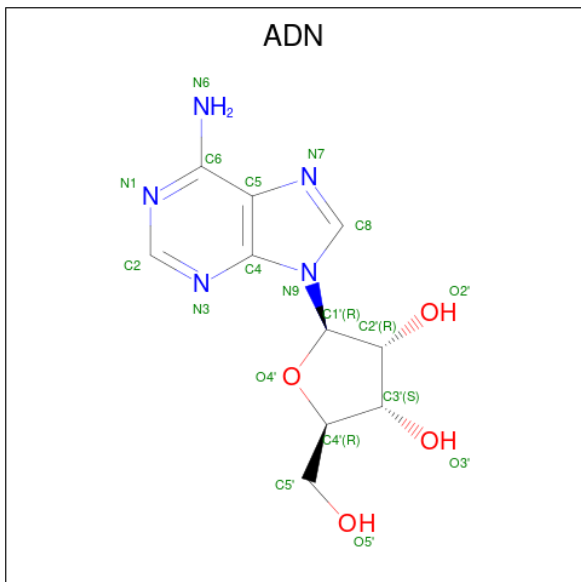
Mol	Chain	Residues	Atoms			ZeroOcc	AltConf
			Total	O	S		
2	A	1	5	4	1	0	0

*Continued on next page...*

Continued from previous page...

Mol	Chain	Residues	Atoms			ZeroOcc	AltConf
2	A	1	Total	O	S	0	0
			5	4	1		
2	A	1	Total	O	S	0	0
			5	4	1		
2	B	1	Total	O	S	0	0
			5	4	1		
2	B	1	Total	O	S	0	0
			5	4	1		

- Molecule 3 is ADENOSINE (three-letter code: ADN) (formula:  $C_{10}H_{13}N_5O_4$ ) (labeled as "Ligand of Interest" by depositor).



Mol	Chain	Residues	Atoms				ZeroOcc	AltConf
3	A	1	Total	C	N	O	0	0
			19	10	5	4		
3	B	1	Total	C	N	O	0	0
			19	10	5	4		

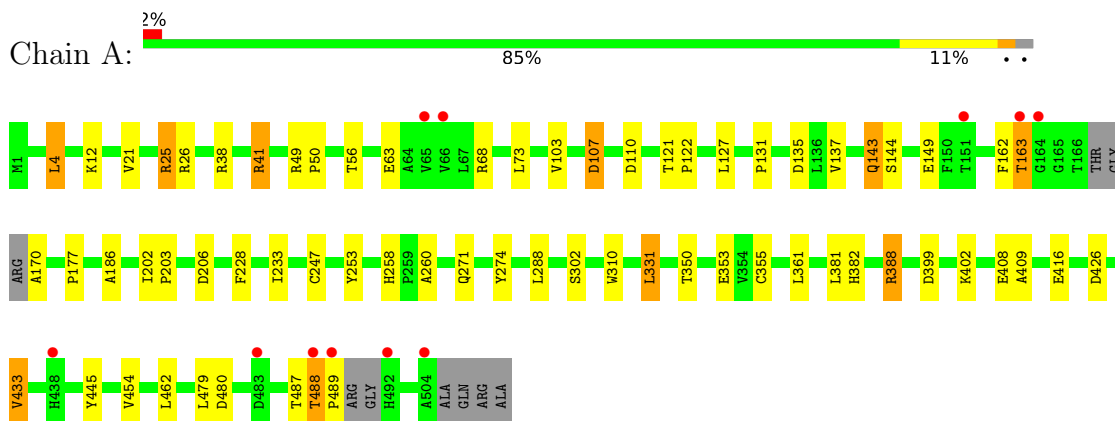
- Molecule 4 is water.

Mol	Chain	Residues	Atoms		ZeroOcc	AltConf
4	A	246	Total	O	0	0
			246	246		
4	B	260	Total	O	0	0
			260	260		

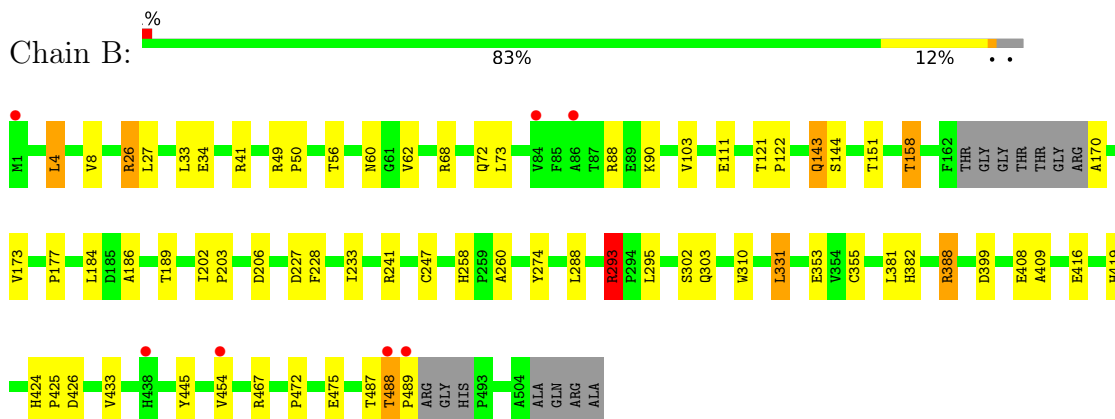
### 3 Residue-property plots [i](#)

These plots are drawn for all protein, RNA, DNA and oligosaccharide chains in the entry. The first graphic for a chain summarises the proportions of the various outlier classes displayed in the second graphic. The second graphic shows the sequence view annotated by issues in geometry and electron density. Residues are color-coded according to the number of geometric quality criteria for which they contain at least one outlier: green = 0, yellow = 1, orange = 2 and red = 3 or more. A red dot above a residue indicates a poor fit to the electron density ( $RSRZ > 2$ ). Stretches of 2 or more consecutive residues without any outlier are shown as a green connector. Residues present in the sample, but not in the model, are shown in grey.

- Molecule 1: Fatty-acyl-CoA synthase



- Molecule 1: Fatty-acyl-CoA synthase



## 4 Data and refinement statistics i

Property	Value	Source
Space group	P 1 21 1	Depositor
Cell constants a, b, c, $\alpha$ , $\beta$ , $\gamma$	82.17Å 96.16Å 87.32Å 90.00° 117.74° 90.00°	Depositor
Resolution (Å)	29.35 – 2.02 29.33 – 2.02	Depositor EDS
% Data completeness (in resolution range)	99.0 (29.35-2.02) 99.0 (29.33-2.02)	Depositor EDS
$R_{merge}$	0.12	Depositor
$R_{sym}$	(Not available)	Depositor
$\langle I/\sigma(I) \rangle$ <sup>1</sup>	1.64 (at 2.01Å)	Xtrriage
Refinement program	REFMAC 5.8.0411	Depositor
R, $R_{free}$	0.224 , 0.262 0.233 , 0.270	Depositor DCC
$R_{free}$ test set	3938 reflections (5.02%)	wwPDB-VP
Wilson B-factor (Å <sup>2</sup> )	27.3	Xtrriage
Anisotropy	0.311	Xtrriage
Bulk solvent $k_{sol}$ (e/Å <sup>3</sup> ), $B_{sol}$ (Å <sup>2</sup> )	0.35 , 43.5	EDS
L-test for twinning <sup>2</sup>	$\langle  L  \rangle = 0.59$ , $\langle L^2 \rangle = 0.44$	Xtrriage
Estimated twinning fraction	0.000 for h,-k,-h-l	Xtrriage
$F_o, F_c$ correlation	0.95	EDS
Total number of atoms	7985	wwPDB-VP
Average B, all atoms (Å <sup>2</sup> )	33.0	wwPDB-VP

Xtrriage's analysis on translational NCS is as follows: *The analyses of the Patterson function reveals a significant off-origin peak that is 56.42 % of the origin peak, indicating pseudo-translational symmetry. The chance of finding a peak of this or larger height randomly in a structure without pseudo-translational symmetry is equal to 2.7459e-05. The detected translational NCS is most likely also responsible for the elevated intensity ratio.*

<sup>1</sup>Intensities estimated from amplitudes.

<sup>2</sup>Theoretical values of  $\langle |L| \rangle$ ,  $\langle L^2 \rangle$  for acentric reflections are 0.5, 0.333 respectively for untwinned datasets, and 0.375, 0.2 for perfectly twinned datasets.

## 5 Model quality [i](#)

### 5.1 Standard geometry [i](#)

Bond lengths and bond angles in the following residue types are not validated in this section: SO4, ADN

The Z score for a bond length (or angle) is the number of standard deviations the observed value is removed from the expected value. A bond length (or angle) with  $|Z| > 5$  is considered an outlier worth inspection. RMSZ is the root-mean-square of all Z scores of the bond lengths (or angles).

Mol	Chain	Bond lengths		Bond angles	
		RMSZ	# Z  >5	RMSZ	# Z  >5
1	A	0.41	0/3802	0.71	1/5201 (0.0%)
1	B	0.43	0/3780	0.72	1/5169 (0.0%)
All	All	0.42	0/7582	0.71	2/10370 (0.0%)

Chiral center outliers are detected by calculating the chiral volume of a chiral center and verifying if the center is modelled as a planar moiety or with the opposite hand. A planarity outlier is detected by checking planarity of atoms in a peptide group, atoms in a mainchain group or atoms of a sidechain that are expected to be planar.

Mol	Chain	#Chirality outliers	#Planarity outliers
1	A	0	3
1	B	0	4
All	All	0	7

There are no bond length outliers.

All (2) bond angle outliers are listed below:

Mol	Chain	Res	Type	Atoms	Z	Observed( $^{\circ}$ )	Ideal( $^{\circ}$ )
1	A	271	GLN	CB-CA-C	-5.27	99.86	110.40
1	B	26	ARG	NE-CZ-NH2	-5.24	117.68	120.30

There are no chirality outliers.

All (7) planarity outliers are listed below:

Mol	Chain	Res	Type	Group
1	A	388	ARG	Sidechain
1	A	41	ARG	Sidechain
1	A	68	ARG	Sidechain
1	B	26	ARG	Sidechain

*Continued on next page...*

*Continued from previous page...*

Mol	Chain	Res	Type	Group
1	B	293	ARG	Sidechain
1	B	388	ARG	Sidechain
1	B	68	ARG	Sidechain

## 5.2 Too-close contacts [i](#)

In the following table, the Non-H and H(model) columns list the number of non-hydrogen atoms and hydrogen atoms in the chain respectively. The H(added) column lists the number of hydrogen atoms added and optimized by MolProbity. The Clashes column lists the number of clashes within the asymmetric unit, whereas Symm-Clashes lists symmetry-related clashes.

Mol	Chain	Non-H	H(model)	H(added)	Clashes	Symm-Clashes
1	A	3716	0	3623	28	0
1	B	3695	0	3622	39	0
2	A	15	0	0	1	0
2	B	15	0	0	0	0
3	A	19	0	13	1	0
3	B	19	0	13	2	0
4	A	246	0	0	6	0
4	B	260	0	0	7	0
All	All	7985	0	7271	67	0

The all-atom clashscore is defined as the number of clashes found per 1000 atoms (including hydrogen atoms). The all-atom clashscore for this structure is 5.

All (67) close contacts within the same asymmetric unit are listed below, sorted by their clash magnitude.

Atom-1	Atom-2	Interatomic distance (Å)	Clash overlap (Å)
1:B:72:GLN:HE21	1:B:158:THR:HG23	1.25	1.00
1:B:173:VAL:HG11	1:B:303[B]:GLN:HG3	1.65	0.78
1:B:186:ALA:HB1	1:B:331:LEU:HD22	1.69	0.74
1:B:72:GLN:HE21	1:B:158:THR:CG2	2.02	0.73
1:A:186:ALA:HB1	1:A:331:LEU:HD22	1.70	0.73
1:B:90:LYS:HE3	1:B:111:GLU:OE2	1.89	0.72
1:B:416:GLU:OE2	4:B:701:HOH:O	2.12	0.66
1:A:4:LEU:HD22	1:A:73:LEU:HA	1.81	0.61
1:B:34:GLU:CB	4:B:916:HOH:O	2.48	0.61
1:B:4:LEU:HD22	1:B:73:LEU:HA	1.83	0.59
1:B:433:VAL:HG22	1:B:445:TYR:HD2	1.70	0.57
1:B:302:SER:HB3	3:B:604:ADN:H5'1	1.88	0.55

*Continued on next page...*



*Continued from previous page...*

Atom-1	Atom-2	Interatomic distance (Å)	Clash overlap (Å)
1:A:433:VAL:HG12	1:A:445:TYR:HD2	1.74	0.53
1:B:60:ASN:HD21	1:B:203:PRO:HA	1.74	0.52
1:B:173:VAL:CG1	1:B:303[B]:GLN:HG3	2.37	0.51
1:B:227:ASP:HB2	4:B:818:HOH:O	2.12	0.50
1:B:41:ARG:HB3	1:B:143:GLN:HG2	1.94	0.50
1:A:162:PHE:O	1:A:163:THR:CB	2.61	0.49
1:A:25:ARG:HH11	1:A:63:GLU:HG3	1.78	0.49
1:B:62:VAL:HG13	4:B:765:HOH:O	2.13	0.48
1:B:258:HIS:HD2	1:B:260:ALA:H	1.62	0.48
1:A:131:PRO:C	4:A:701:HOH:O	2.51	0.47
1:A:202:ILE:HG23	1:A:203:PRO:HD2	1.96	0.47
1:B:353:GLU:OE1	1:B:382:HIS:HD2	1.97	0.47
1:A:135:ASP:OD1	1:A:137:VAL:HG22	2.15	0.47
1:A:41:ARG:HB3	1:A:143:GLN:HG2	1.97	0.46
1:B:426:ASP:HA	1:B:454:VAL:HG11	1.96	0.46
1:A:107:ASP:HB2	4:A:855:HOH:O	2.14	0.46
1:B:72:GLN:NE2	1:B:158:THR:HG23	2.10	0.46
1:B:8:VAL:HG13	1:B:33:LEU:HD21	1.97	0.46
1:B:189:THR:HG23	4:B:793:HOH:O	2.15	0.46
1:A:258:HIS:HD2	1:A:260:ALA:H	1.62	0.46
1:B:302:SER:CB	3:B:604:ADN:H5'1	2.46	0.46
1:B:56:THR:HA	1:B:103:VAL:O	2.16	0.45
1:A:416:GLU:HG3	4:A:780:HOH:O	2.17	0.45
1:A:21:VAL:HG22	1:A:26:ARG:HG2	1.98	0.45
1:A:426:ASP:HA	1:A:454:VAL:HG21	1.99	0.45
1:B:355:CYS:HA	1:B:381:LEU:O	2.17	0.44
1:A:353:GLU:OE1	1:A:382:HIS:HD2	2.00	0.44
1:B:202:ILE:HG23	1:B:203:PRO:HD2	2.00	0.44
1:B:293:ARG:HG3	1:B:295:LEU:HG	1.99	0.44
1:B:247:CYS:O	1:B:274:TYR:HA	2.18	0.44
1:B:408:GLU:O	1:B:409:ALA:HB3	2.18	0.44
1:B:419:HIS:HD2	4:B:723:HOH:O	2.01	0.44
1:A:56:THR:HA	1:A:103:VAL:O	2.17	0.43
1:A:4:LEU:HD22	1:A:73:LEU:CA	2.48	0.43
1:B:228:PHE:CD1	1:B:233:ILE:HG13	2.53	0.43
1:B:488:THR:OG1	1:B:489:PRO:HD2	2.19	0.43
1:A:488:THR:OG1	1:A:489:PRO:HD2	2.19	0.43
1:B:303[A]:GLN:HG2	4:B:858:HOH:O	2.18	0.43
1:A:228:PHE:CD1	1:A:233:ILE:HG13	2.54	0.43
1:A:408:GLU:O	1:A:409:ALA:HB3	2.19	0.43
1:A:121:THR:HG22	1:A:122:PRO:O	2.19	0.42

*Continued on next page...*

Continued from previous page...

Atom-1	Atom-2	Interatomic distance (Å)	Clash overlap (Å)
1:A:247:CYS:O	1:A:274:TYR:HA	2.18	0.42
1:A:149:GLU:CB	4:A:935:HOH:O	2.67	0.42
1:B:49:ARG:HB3	1:B:50:PRO:HD2	2.00	0.42
1:B:467:ARG:HG3	1:B:472:PRO:HA	2.01	0.42
1:A:110:ASP:HB2	4:A:823:HOH:O	2.19	0.42
2:A:602:SO4:O4	1:B:170:ALA:N	2.51	0.42
1:A:302:SER:HB3	3:A:604:ADN:H5'1	2.01	0.42
1:B:158:THR:HB	1:B:177:PRO:HD3	2.02	0.42
1:A:49:ARG:HB3	1:A:50:PRO:HD2	2.01	0.41
1:B:121:THR:HG22	1:B:122:PRO:O	2.20	0.41
1:B:424:HIS:HA	1:B:425:PRO:HD3	1.97	0.41
1:A:355:CYS:HA	1:A:381:LEU:O	2.21	0.41
1:B:467:ARG:HD3	1:B:475:GLU:OE1	2.20	0.40
1:A:170:ALA:HB2	4:A:875:HOH:O	2.22	0.40

There are no symmetry-related clashes.

## 5.3 Torsion angles [i](#)

### 5.3.1 Protein backbone [i](#)

In the following table, the Percentiles column shows the percent Ramachandran outliers of the chain as a percentile score with respect to all X-ray entries followed by that with respect to entries of similar resolution.

The Analysed column shows the number of residues for which the backbone conformation was analysed, and the total number of residues.

Mol	Chain	Analysed	Favoured	Allowed	Outliers	Percentiles	
1	A	495/508 (97%)	484 (98%)	9 (2%)	2 (0%)	34	28
1	B	490/508 (96%)	481 (98%)	9 (2%)	0	100	100
All	All	985/1016 (97%)	965 (98%)	18 (2%)	2 (0%)	47	43

All (2) Ramachandran outliers are listed below:

Mol	Chain	Res	Type
1	A	163	THR
1	A	107	ASP

### 5.3.2 Protein sidechains [i](#)

In the following table, the Percentiles column shows the percent sidechain outliers of the chain as a percentile score with respect to all X-ray entries followed by that with respect to entries of similar resolution.

The Analysed column shows the number of residues for which the sidechain conformation was analysed, and the total number of residues.

Mol	Chain	Analysed	Rotameric	Outliers	Percentiles	
1	A	370/388 (95%)	346 (94%)	24 (6%)	17	11
1	B	369/388 (95%)	351 (95%)	18 (5%)	25	20
All	All	739/776 (95%)	697 (94%)	42 (6%)	20	15

All (42) residues with a non-rotameric sidechain are listed below:

Mol	Chain	Res	Type
1	A	4	LEU
1	A	12	LYS
1	A	25	ARG
1	A	38	ARG
1	A	127	LEU
1	A	143	GLN
1	A	144	SER
1	A	177	PRO
1	A	206	ASP
1	A	253	TYR
1	A	288	LEU
1	A	310	TRP
1	A	331	LEU
1	A	350	THR
1	A	361	LEU
1	A	388	ARG
1	A	399	ASP
1	A	402	LYS
1	A	433	VAL
1	A	462	LEU
1	A	479	LEU
1	A	480	ASP
1	A	487	THR
1	A	488	THR
1	B	4	LEU
1	B	27	LEU
1	B	88	ARG

*Continued on next page...*

*Continued from previous page...*

Mol	Chain	Res	Type
1	B	143	GLN
1	B	144	SER
1	B	151	THR
1	B	158	THR
1	B	184	LEU
1	B	206	ASP
1	B	241	ARG
1	B	288	LEU
1	B	293	ARG
1	B	310	TRP
1	B	331	LEU
1	B	388	ARG
1	B	399	ASP
1	B	487	THR
1	B	488	THR

Sometimes sidechains can be flipped to improve hydrogen bonding and reduce clashes. All (8) such sidechains are listed below:

Mol	Chain	Res	Type
1	A	258	HIS
1	A	382	HIS
1	A	419	HIS
1	B	60	ASN
1	B	72	GLN
1	B	258	HIS
1	B	382	HIS
1	B	419	HIS

### 5.3.3 RNA [i](#)

There are no RNA molecules in this entry.

### 5.4 Non-standard residues in protein, DNA, RNA chains [i](#)

There are no non-standard protein/DNA/RNA residues in this entry.

### 5.5 Carbohydrates [i](#)

There are no monosaccharides in this entry.

## 5.6 Ligand geometry [i](#)

8 ligands are modelled in this entry.

In the following table, the Counts columns list the number of bonds (or angles) for which Mogul statistics could be retrieved, the number of bonds (or angles) that are observed in the model and the number of bonds (or angles) that are defined in the Chemical Component Dictionary. The Link column lists molecule types, if any, to which the group is linked. The Z score for a bond length (or angle) is the number of standard deviations the observed value is removed from the expected value. A bond length (or angle) with  $|Z| > 2$  is considered an outlier worth inspection. RMSZ is the root-mean-square of all Z scores of the bond lengths (or angles).

Mol	Type	Chain	Res	Link	Bond lengths			Bond angles		
					Counts	RMSZ	# Z  > 2	Counts	RMSZ	# Z  > 2
2	SO4	B	603	-	4,4,4	0.35	0	6,6,6	0.05	0
3	ADN	A	604	-	18,21,21	0.73	0	18,31,31	1.11	2 (11%)
2	SO4	A	602	-	4,4,4	0.34	0	6,6,6	0.14	0
3	ADN	B	604	-	18,21,21	0.78	0	18,31,31	1.20	1 (5%)
2	SO4	B	601	-	4,4,4	0.41	0	6,6,6	0.34	0
2	SO4	A	603	-	4,4,4	0.32	0	6,6,6	0.08	0
2	SO4	B	602	-	4,4,4	0.34	0	6,6,6	0.12	0
2	SO4	A	601	-	4,4,4	0.38	0	6,6,6	0.25	0

In the following table, the Chirals column lists the number of chiral outliers, the number of chiral centers analysed, the number of these observed in the model and the number defined in the Chemical Component Dictionary. Similar counts are reported in the Torsion and Rings columns. '-' means no outliers of that kind were identified.

Mol	Type	Chain	Res	Link	Chirals	Torsions	Rings
3	ADN	B	604	-	-	0/2/22/22	0/3/3/3
3	ADN	A	604	-	-	2/2/22/22	0/3/3/3

There are no bond length outliers.

All (3) bond angle outliers are listed below:

Mol	Chain	Res	Type	Atoms	Z	Observed(°)	Ideal(°)
3	B	604	ADN	O2'-C2'-C3'	2.86	121.08	111.82
3	A	604	ADN	O2'-C2'-C3'	2.68	120.50	111.82
3	A	604	ADN	C5-C6-N6	2.00	123.40	120.35

There are no chirality outliers.

All (2) torsion outliers are listed below:

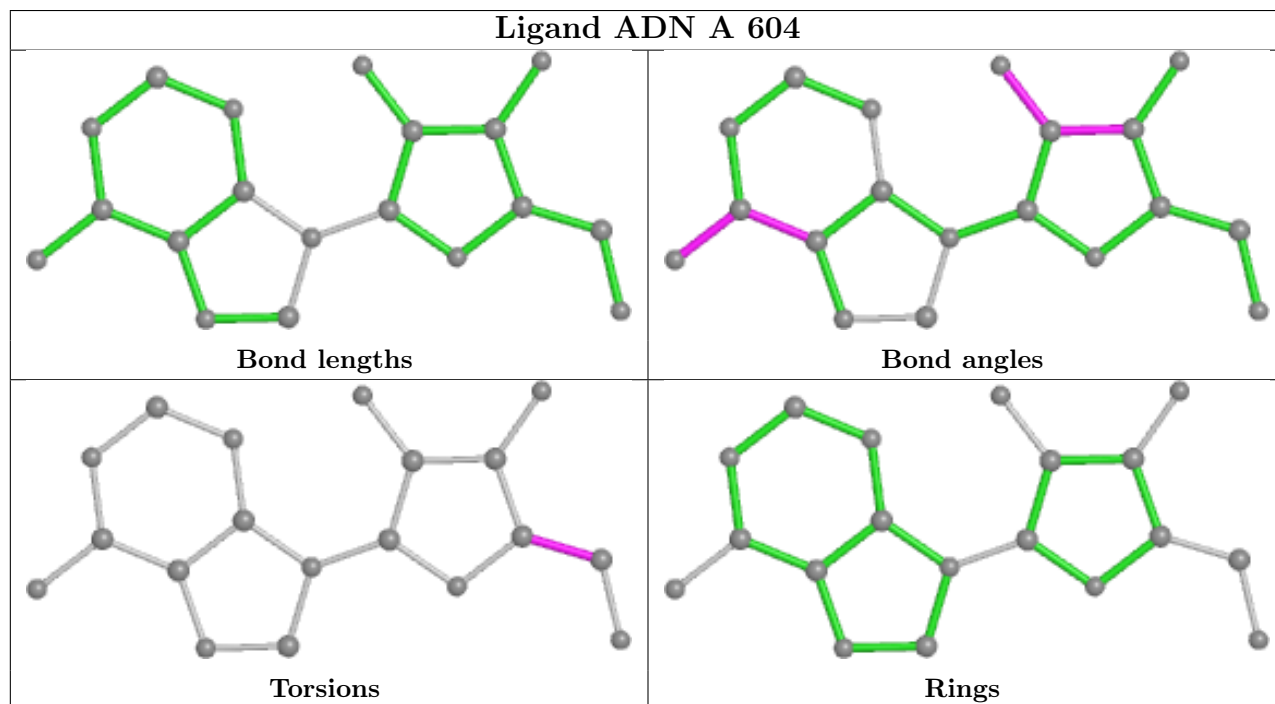
Mol	Chain	Res	Type	Atoms
3	A	604	ADN	O4'-C4'-C5'-O5'
3	A	604	ADN	C3'-C4'-C5'-O5'

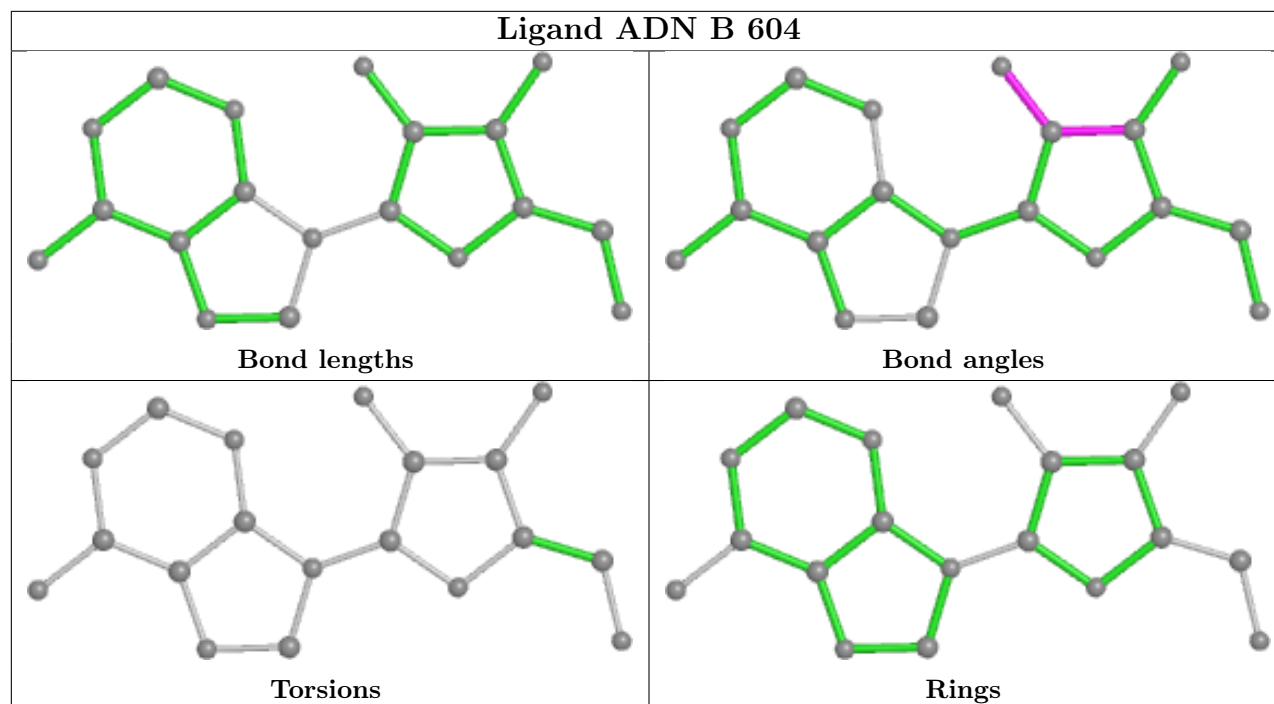
There are no ring outliers.

3 monomers are involved in 4 short contacts:

Mol	Chain	Res	Type	Clashes	Symm-Clashes
3	A	604	ADN	1	0
2	A	602	SO4	1	0
3	B	604	ADN	2	0

The following is a two-dimensional graphical depiction of Mogul quality analysis of bond lengths, bond angles, torsion angles, and ring geometry for all instances of the Ligand of Interest. In addition, ligands with molecular weight > 250 and outliers as shown on the validation Tables will also be included. For torsion angles, if less than 5% of the Mogul distribution of torsion angles is within 10 degrees of the torsion angle in question, then that torsion angle is considered an outlier. Any bond that is central to one or more torsion angles identified as an outlier by Mogul will be highlighted in the graph. For rings, the root-mean-square deviation (RMSD) between the ring in question and similar rings identified by Mogul is calculated over all ring torsion angles. If the average RMSD is greater than 60 degrees and the minimal RMSD between the ring in question and any Mogul-identified rings is also greater than 60 degrees, then that ring is considered an outlier. The outliers are highlighted in purple. The color gray indicates Mogul did not find sufficient equivalents in the CSD to analyse the geometry.





## 5.7 Other polymers [i](#)

There are no such residues in this entry.

## 5.8 Polymer linkage issues [i](#)

There are no chain breaks in this entry.

## 6 Fit of model and data [i](#)

### 6.1 Protein, DNA and RNA chains [i](#)

In the following table, the column labelled ‘#RSRZ > 2’ contains the number (and percentage) of RSRZ outliers, followed by percent RSRZ outliers for the chain as percentile scores relative to all X-ray entries and entries of similar resolution. The OWAB column contains the minimum, median, 95<sup>th</sup> percentile and maximum values of the occupancy-weighted average B-factor per residue. The column labelled ‘Q < 0.9’ lists the number of (and percentage) of residues with an average occupancy less than 0.9.

Mol	Chain	Analysed	<RSRZ>	#RSRZ>2	OWAB(Å <sup>2</sup> )	Q<0.9
1	A	499/508 (98%)	-0.15	11 (2%) 62 61	19, 30, 51, 92	0
1	B	494/508 (97%)	-0.20	7 (1%) 75 74	19, 30, 50, 99	0
All	All	993/1016 (97%)	-0.18	18 (1%) 68 67	19, 30, 51, 99	0

All (18) RSRZ outliers are listed below:

Mol	Chain	Res	Type	RSRZ
1	B	489	PRO	6.7
1	A	489	PRO	4.3
1	A	492	HIS	3.7
1	A	163	THR	3.6
1	A	488	THR	3.0
1	B	488	THR	2.9
1	A	164	GLY	2.8
1	B	86	ALA	2.6
1	A	438	HIS	2.5
1	A	65	VAL	2.5
1	B	438	HIS	2.4
1	A	151	THR	2.4
1	B	1	MET	2.3
1	A	504	ALA	2.2
1	B	84	VAL	2.1
1	B	454	VAL	2.1
1	A	483	ASP	2.1
1	A	66	VAL	2.0

### 6.2 Non-standard residues in protein, DNA, RNA chains [i](#)

There are no non-standard protein/DNA/RNA residues in this entry.



### 6.3 Carbohydrates [i](#)

There are no monosaccharides in this entry.

### 6.4 Ligands [i](#)

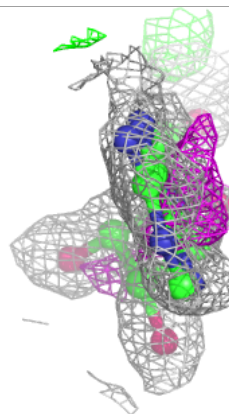
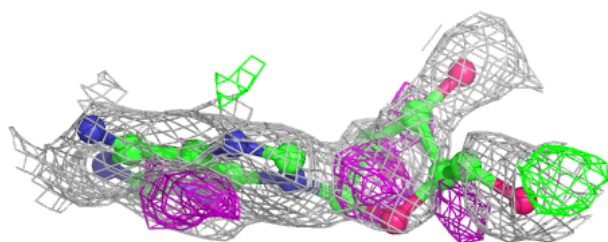
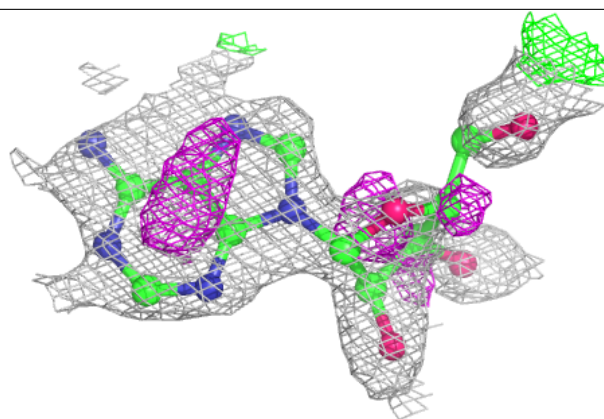
In the following table, the Atoms column lists the number of modelled atoms in the group and the number defined in the chemical component dictionary. The B-factors column lists the minimum, median, 95<sup>th</sup> percentile and maximum values of B factors of atoms in the group. The column labelled 'Q< 0.9' lists the number of atoms with occupancy less than 0.9.

Mol	Type	Chain	Res	Atoms	RSCC	RSR	B-factors(Å <sup>2</sup> )	Q<0.9
3	ADN	A	604	19/19	0.68	0.28	42,63,70,71	0
3	ADN	B	604	19/19	0.76	0.25	34,50,54,55	0
2	SO4	A	602	5/5	0.89	0.28	66,67,81,83	0
2	SO4	B	603	5/5	0.90	0.23	79,89,91,94	0
2	SO4	A	603	5/5	0.93	0.25	78,79,83,83	0
2	SO4	B	602	5/5	0.97	0.17	47,51,54,59	0
2	SO4	A	601	5/5	0.98	0.14	42,43,45,46	0
2	SO4	B	601	5/5	0.98	0.07	34,36,38,41	0

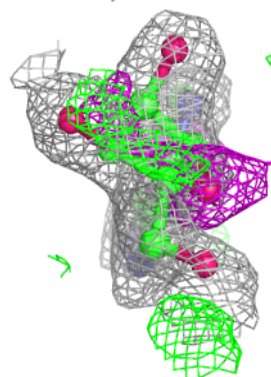
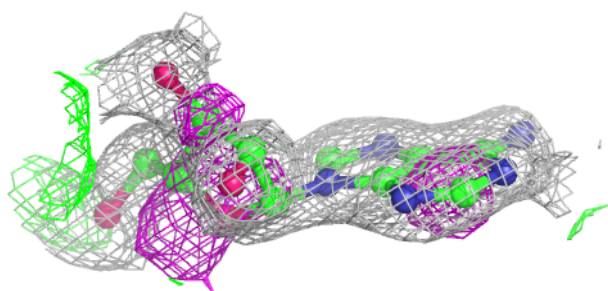
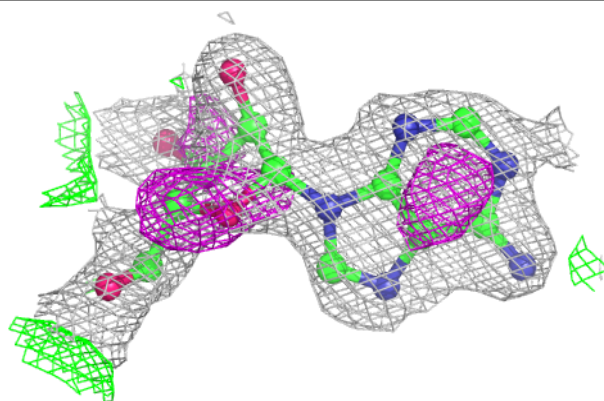
The following is a graphical depiction of the model fit to experimental electron density of all instances of the Ligand of Interest. In addition, ligands with molecular weight > 250 and outliers as shown on the geometry validation Tables will also be included. Each fit is shown from different orientation to approximate a three-dimensional view.

**Electron density around ADN A 604:**

$2mF_o-DF_c$  (at 0.7 rmsd) in gray  
 $mF_o-DF_c$  (at 3 rmsd) in purple (negative)  
and green (positive)

**Electron density around ADN B 604:**

$2mF_o-DF_c$  (at 0.7 rmsd) in gray  
 $mF_o-DF_c$  (at 3 rmsd) in purple (negative)  
and green (positive)



## 6.5 Other polymers [i](#)

There are no such residues in this entry.