



# Full wwPDB X-ray Structure Validation Report ⓘ

Oct 7, 2023 – 04:28 PM EDT

PDB ID : 4Q1D  
Title : Human dCK C4S-S74E mutant in complex with UDP and the inhibitor 9 {2-  
  {[(1R)-1-{2-[3-(2-fluoroethoxy)-4-methoxyphenyl]-5-propyl-1,3-thiazol-4-yl}et  
  hyl]sulfanyl}pyrimidine-4,6-diamine}  
Authors : Nomme, J.; Lavie, A.  
Deposited on : 2014-04-03  
Resolution : 2.00 Å(reported)

This is a Full wwPDB X-ray Structure Validation Report for a publicly released PDB entry.

We welcome your comments at [validation@mail.wwpdb.org](mailto:validation@mail.wwpdb.org)

A user guide is available at

<https://www.wwpdb.org/validation/2017/XrayValidationReportHelp>

with specific help available everywhere you see the ⓘ symbol.

The types of validation reports are described at

<http://www.wwpdb.org/validation/2017/FAQs#types>.

---

The following versions of software and data (see [references ⓘ](#)) were used in the production of this report:

MolProbity : 4.02b-467  
Mogul : 1.8.5 (274361), CSD as541be (2020)  
Xtriage (Phenix) : 1.13  
EDS : 2.35.1  
buster-report : 1.1.7 (2018)  
Percentile statistics : 20191225.v01 (using entries in the PDB archive December 25th 2019)  
Refmac : 5.8.0158  
CCP4 : 7.0.044 (Gargrove)  
Ideal geometry (proteins) : Engh & Huber (2001)  
Ideal geometry (DNA, RNA) : Parkinson et al. (1996)  
Validation Pipeline (wwPDB-VP) : 2.35.1

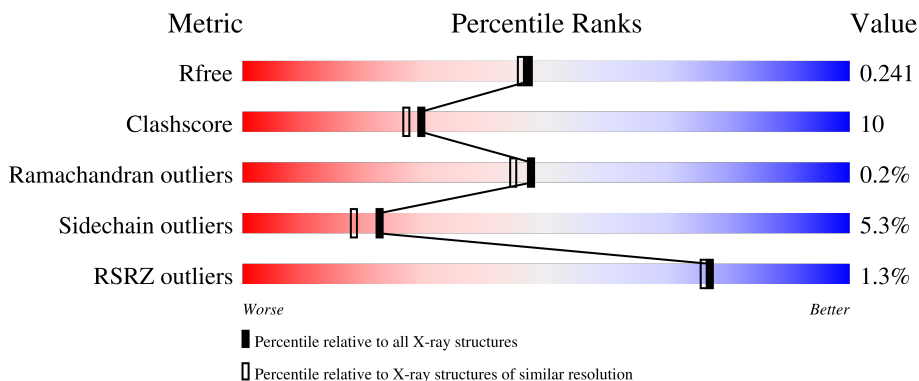
# 1 Overall quality at a glance

The following experimental techniques were used to determine the structure:

*X-RAY DIFFRACTION*

The reported resolution of this entry is 2.00 Å.

Percentile scores (ranging between 0-100) for global validation metrics of the entry are shown in the following graphic. The table shows the number of entries on which the scores are based.



Metric	Whole archive (#Entries)	Similar resolution (#Entries, resolution range(Å))
$R_{free}$	130704	8085 (2.00-2.00)
Clashscore	141614	9178 (2.00-2.00)
Ramachandran outliers	138981	9054 (2.00-2.00)
Sidechain outliers	138945	9053 (2.00-2.00)
RSRZ outliers	127900	7900 (2.00-2.00)

The table below summarises the geometric issues observed across the polymeric chains and their fit to the electron density. The red, orange, yellow and green segments of the lower bar indicate the fraction of residues that contain outliers for  $\geq 3$ , 2, 1 and 0 types of geometric quality criteria respectively. A grey segment represents the fraction of residues that are not modelled. The numeric value for each fraction is indicated below the corresponding segment, with a dot representing fractions  $\leq 5\%$ . The upper red bar (where present) indicates the fraction of residues that have poor fit to the electron density. The numeric value is given above the bar.

Mol	Chain	Length	Quality of chain
1	A	280	 61% 19% 18%
1	B	280	 62% 19% 19%

## 2 Entry composition [i](#)

There are 4 unique types of molecules in this entry. The entry contains 3936 atoms, of which 0 are hydrogens and 0 are deuteriums.

In the tables below, the ZeroOcc column contains the number of atoms modelled with zero occupancy, the AltConf column contains the number of residues with at least one atom in alternate conformation and the Trace column contains the number of residues modelled with at most 2 atoms.

- Molecule 1 is a protein called Deoxycytidine kinase.

Mol	Chain	Residues	Atoms					ZeroOcc	AltConf	Trace
			Total	C	N	O	S			
1	A	231	Total 1890	C 1215	N 314	O 354	S 7	0	1	0
1	B	227	Total 1842	C 1181	N 304	O 350	S 7	0	1	0

There are 50 discrepancies between the modelled and reference sequences:

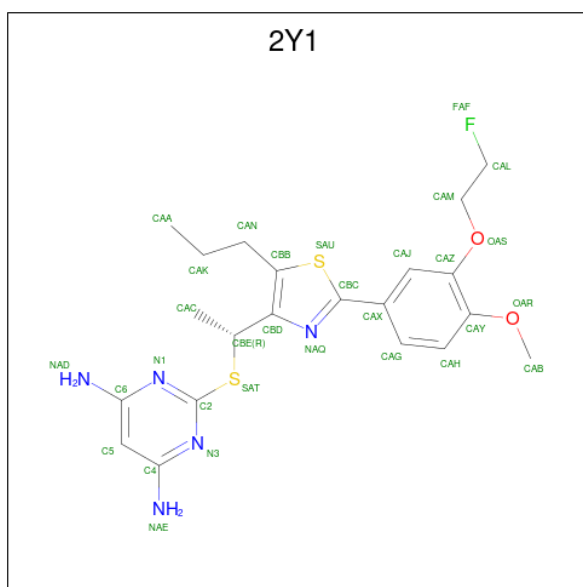
Chain	Residue	Modelled	Actual	Comment	Reference
A	-19	MET	-	expression tag	UNP P27707
A	-18	GLY	-	expression tag	UNP P27707
A	-17	SER	-	expression tag	UNP P27707
A	-16	SER	-	expression tag	UNP P27707
A	-15	HIS	-	expression tag	UNP P27707
A	-14	HIS	-	expression tag	UNP P27707
A	-13	HIS	-	expression tag	UNP P27707
A	-12	HIS	-	expression tag	UNP P27707
A	-11	HIS	-	expression tag	UNP P27707
A	-10	HIS	-	expression tag	UNP P27707
A	-9	SER	-	expression tag	UNP P27707
A	-8	SER	-	expression tag	UNP P27707
A	-7	GLY	-	expression tag	UNP P27707
A	-6	LEU	-	expression tag	UNP P27707
A	-5	VAL	-	expression tag	UNP P27707
A	-4	PRO	-	expression tag	UNP P27707
A	-3	ARG	-	expression tag	UNP P27707
A	-2	GLY	-	expression tag	UNP P27707
A	-1	SER	-	expression tag	UNP P27707
A	0	HIS	-	expression tag	UNP P27707
A	9	SER	CYS	engineered mutation	UNP P27707
A	45	SER	CYS	engineered mutation	UNP P27707
A	59	SER	CYS	engineered mutation	UNP P27707
A	74	GLU	SER	engineered mutation	UNP P27707
A	146	SER	CYS	engineered mutation	UNP P27707

*Continued on next page...*

*Continued from previous page...*

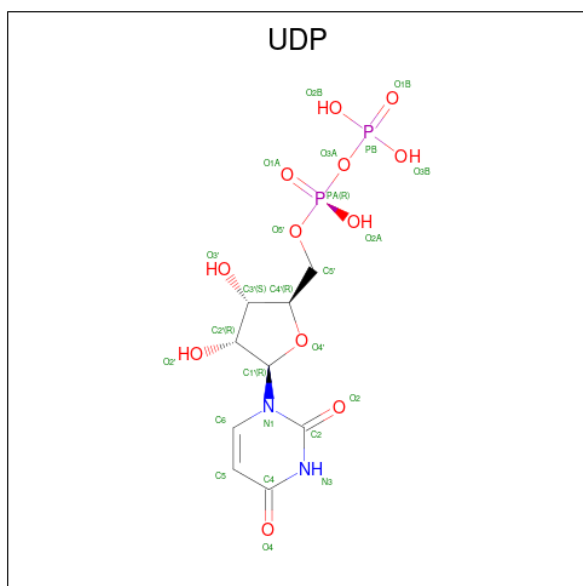
Chain	Residue	Modelled	Actual	Comment	Reference
B	-19	MET	-	expression tag	UNP P27707
B	-18	GLY	-	expression tag	UNP P27707
B	-17	SER	-	expression tag	UNP P27707
B	-16	SER	-	expression tag	UNP P27707
B	-15	HIS	-	expression tag	UNP P27707
B	-14	HIS	-	expression tag	UNP P27707
B	-13	HIS	-	expression tag	UNP P27707
B	-12	HIS	-	expression tag	UNP P27707
B	-11	HIS	-	expression tag	UNP P27707
B	-10	HIS	-	expression tag	UNP P27707
B	-9	SER	-	expression tag	UNP P27707
B	-8	SER	-	expression tag	UNP P27707
B	-7	GLY	-	expression tag	UNP P27707
B	-6	LEU	-	expression tag	UNP P27707
B	-5	VAL	-	expression tag	UNP P27707
B	-4	PRO	-	expression tag	UNP P27707
B	-3	ARG	-	expression tag	UNP P27707
B	-2	GLY	-	expression tag	UNP P27707
B	-1	SER	-	expression tag	UNP P27707
B	0	HIS	-	expression tag	UNP P27707
B	9	SER	CYS	engineered mutation	UNP P27707
B	45	SER	CYS	engineered mutation	UNP P27707
B	59	SER	CYS	engineered mutation	UNP P27707
B	74	GLU	SER	engineered mutation	UNP P27707
B	146	SER	CYS	engineered mutation	UNP P27707

- Molecule 2 is (R)-2-((1-(2-(3-(2-fluoroethoxy)-4-methoxyphenyl)-5-propylthiazol-4-yl)ethyl)thio)pyrimidine-4,6-diamine (three-letter code: 2Y1) (formula: C<sub>21</sub>H<sub>26</sub>FN<sub>5</sub>O<sub>2</sub>S<sub>2</sub>).



Mol	Chain	Residues	Atoms					ZeroOcc	AltConf	
			Total	C	F	N	O			S
2	A	1	31	21	1	5	2	2	0	0
2	B	1	31	21	1	5	2	2	0	0

- Molecule 3 is URIDINE-5'-DIPHOSPHATE (three-letter code: UDP) (formula:  $C_9H_{14}N_2O_{12}P_2$ ).



Mol	Chain	Residues	Atoms					ZeroOcc	AltConf
			Total	C	N	O	P		
3	A	1	25	9	2	12	2	0	0
3	B	1	25	9	2	12	2	0	0

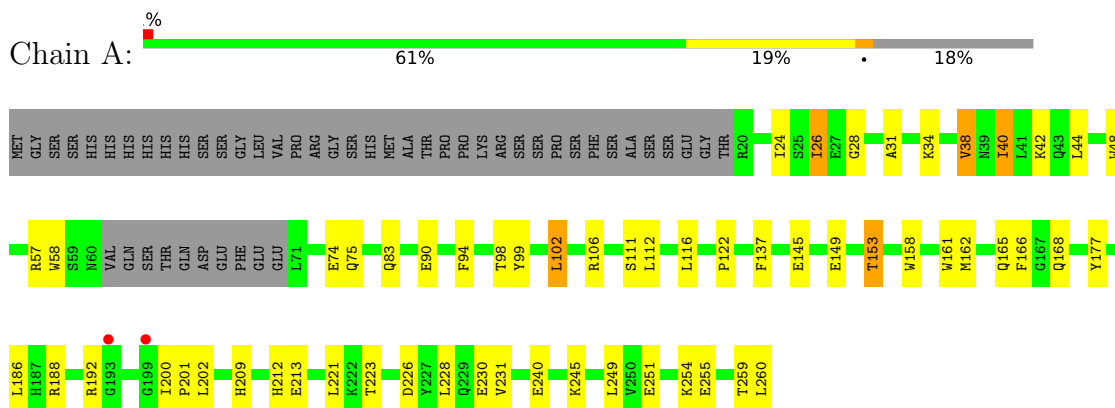
- Molecule 4 is water.

Mol	Chain	Residues	Atoms	ZeroOcc	AltConf
4	A	49	Total O 49 49	0	0
4	B	43	Total O 43 43	0	0

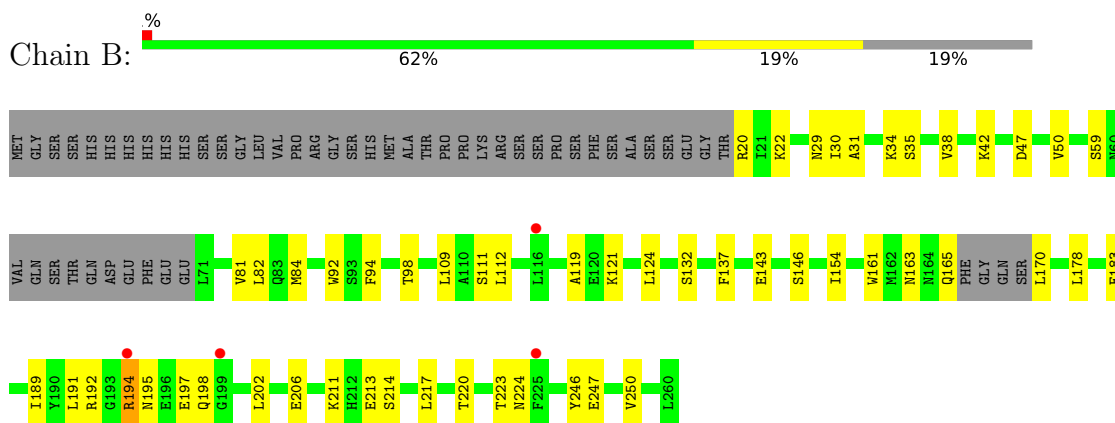
### 3 Residue-property plots [i](#)

These plots are drawn for all protein, RNA, DNA and oligosaccharide chains in the entry. The first graphic for a chain summarises the proportions of the various outlier classes displayed in the second graphic. The second graphic shows the sequence view annotated by issues in geometry and electron density. Residues are color-coded according to the number of geometric quality criteria for which they contain at least one outlier: green = 0, yellow = 1, orange = 2 and red = 3 or more. A red dot above a residue indicates a poor fit to the electron density ( $RSRZ > 2$ ). Stretches of 2 or more consecutive residues without any outlier are shown as a green connector. Residues present in the sample, but not in the model, are shown in grey.

- Molecule 1: Deoxycytidine kinase



- Molecule 1: Deoxycytidine kinase



## 4 Data and refinement statistics

Property	Value	Source
Space group	P 41	Depositor
Cell constants a, b, c, $\alpha$ , $\beta$ , $\gamma$	68.73Å 68.73Å 120.62Å 90.00° 90.00° 90.00°	Depositor
Resolution (Å)	27.39 – 2.00 27.61 – 2.00	Depositor EDS
% Data completeness (in resolution range)	97.9 (27.39-2.00) 98.0 (27.61-2.00)	Depositor EDS
$R_{merge}$	(Not available)	Depositor
$R_{sym}$	0.03	Depositor
$\langle I/\sigma(I) \rangle$ <sup>1</sup>	1.13 (at 1.99Å)	Xtriage
Refinement program	REFMAC 5.8.0049	Depositor
R, $R_{free}$	0.191 , 0.254 0.196 , 0.241	Depositor DCC
$R_{free}$ test set	1852 reflections (4.90%)	wwPDB-VP
Wilson B-factor (Å <sup>2</sup> )	45.4	Xtriage
Anisotropy	0.124	Xtriage
Bulk solvent $k_{sol}$ (e/Å <sup>3</sup> ), $B_{sol}$ (Å <sup>2</sup> )	0.31 , 28.0	EDS
L-test for twinning <sup>2</sup>	$\langle  L  \rangle = 0.50$ , $\langle L^2 \rangle = 0.34$	Xtriage
Estimated twinning fraction	0.487 for h,-k,-l	Xtriage
Reported twinning fraction	0.505 for H, K, L 0.495 for -H, K, -L	Depositor
Outliers	0 of 37813 reflections	Xtriage
$F_o, F_c$ correlation	0.97	EDS
Total number of atoms	3936	wwPDB-VP
Average B, all atoms (Å <sup>2</sup> )	51.0	wwPDB-VP

Xtriage's analysis on translational NCS is as follows: *The largest off-origin peak in the Patterson function is 8.07% of the height of the origin peak. No significant pseudotranslation is detected.*

<sup>1</sup>Intensities estimated from amplitudes.

<sup>2</sup>Theoretical values of  $\langle |L| \rangle$ ,  $\langle L^2 \rangle$  for acentric reflections are 0.5, 0.333 respectively for untwinned datasets, and 0.375, 0.2 for perfectly twinned datasets.



## 5 Model quality [i](#)

### 5.1 Standard geometry [i](#)

Bond lengths and bond angles in the following residue types are not validated in this section: UDP, 2Y1

The Z score for a bond length (or angle) is the number of standard deviations the observed value is removed from the expected value. A bond length (or angle) with  $|Z| > 5$  is considered an outlier worth inspection. RMSZ is the root-mean-square of all Z scores of the bond lengths (or angles).

Mol	Chain	Bond lengths		Bond angles	
		RMSZ	# Z  >5	RMSZ	# Z  >5
1	A	0.56	0/1939	0.78	2/2628 (0.1%)
1	B	0.53	0/1887	0.80	5/2559 (0.2%)
All	All	0.55	0/3826	0.79	7/5187 (0.1%)

There are no bond length outliers.

All (7) bond angle outliers are listed below:

Mol	Chain	Res	Type	Atoms	Z	Observed(°)	Ideal(°)
1	B	220	THR	CB-CA-C	-9.43	86.15	111.60
1	B	194	ARG	CB-CA-C	8.57	127.55	110.40
1	B	194	ARG	N-CA-C	-8.16	88.96	111.00
1	A	230	GLU	CB-CA-C	-6.22	97.96	110.40
1	A	40	ILE	CB-CA-C	-5.70	100.19	111.60
1	B	195	ASN	CB-CA-C	-5.31	99.78	110.40
1	B	112	LEU	CA-CB-CG	5.20	127.26	115.30

There are no chirality outliers.

There are no planarity outliers.

### 5.2 Too-close contacts [i](#)

In the following table, the Non-H and H(model) columns list the number of non-hydrogen atoms and hydrogen atoms in the chain respectively. The H(added) column lists the number of hydrogen atoms added and optimized by MolProbity. The Clashes column lists the number of clashes within the asymmetric unit, whereas Symm-Clashes lists symmetry-related clashes.

Mol	Chain	Non-H	H(model)	H(added)	Clashes	Symm-Clashes
1	A	1890	0	1807	43	1
1	B	1842	0	1746	31	0

*Continued on next page...*

*Continued from previous page...*

Mol	Chain	Non-H	H(model)	H(added)	Clashes	Symm-Clashes
2	A	31	0	26	2	0
2	B	31	0	26	3	0
3	A	25	0	11	0	0
3	B	25	0	11	1	0
4	A	49	0	0	10	2
4	B	43	0	0	3	1
All	All	3936	0	3627	71	2

The all-atom clashscore is defined as the number of clashes found per 1000 atoms (including hydrogen atoms). The all-atom clashscore for this structure is 10.

All (71) close contacts within the same asymmetric unit are listed below, sorted by their clash magnitude.

Atom-1	Atom-2	Interatomic distance (Å)	Clash overlap (Å)
1:A:251:GLU:O	4:A:422:HOH:O	1.65	1.13
1:A:255:GLU:N	4:A:422:HOH:O	1.69	1.03
1:B:194:ARG:O	1:B:198:GLN:NE2	2.00	0.93
1:A:158:TRP:CE2	1:A:162:MET:HG3	2.13	0.83
1:A:90:GLU:O	4:A:421:HOH:O	1.99	0.80
1:A:177:TYR:OH	4:A:448:HOH:O	2.03	0.76
1:A:149:GLU:O	1:A:153:THR:OG1	2.07	0.72
1:B:247:GLU:OE1	4:B:409:HOH:O	2.08	0.70
1:A:106:ARG:HD3	1:B:161:TRP:CD1	2.27	0.69
1:B:183:GLU:HB2	4:B:432:HOH:O	1.93	0.67
1:A:57:ARG:NH2	1:A:74:GLU:OE2	2.27	0.66
1:B:47:ASP:OD2	1:B:121:LYS:N	2.26	0.65
1:A:48:TRP:O	4:A:430:HOH:O	2.13	0.64
1:A:158:TRP:CZ2	1:A:162:MET:HG3	2.35	0.62
1:A:161:TRP:CH2	1:A:165:GLN:HG3	2.34	0.62
1:B:143:GLU:OE1	1:B:211:LYS:NZ	2.31	0.62
1:B:84:MET:HB3	1:B:92:TRP:CD1	2.35	0.61
1:B:94:PHE:O	1:B:98:THR:HG23	1.99	0.61
1:A:26:ILE:HD13	1:A:26:ILE:N	2.16	0.61
1:B:189:ILE:HG23	1:B:197:GLU:HB2	1.83	0.61
1:A:186:LEU:HD22	1:A:202:LEU:HD13	1.83	0.60
1:B:42:LYS:O	4:B:430:HOH:O	2.15	0.60
1:A:34:LYS:O	1:A:38:VAL:HG13	2.03	0.58
1:A:106:ARG:HB3	4:A:425:HOH:O	2.04	0.58
1:A:145:GLU:OE2	4:A:428:HOH:O	2.18	0.57
1:A:112:LEU:HD13	1:A:112:LEU:O	2.06	0.56
1:A:24:ILE:HD11	1:A:260:LEU:CD1	2.36	0.55

*Continued on next page...*

*Continued from previous page...*

Atom-1	Atom-2	Interatomic distance (Å)	Clash overlap (Å)
1:A:28:GLY:O	1:A:212:HIS:NE2	2.40	0.55
1:B:38:VAL:HB	1:B:50:VAL:HG11	1.89	0.54
1:B:189:ILE:HG23	1:B:197:GLU:CB	2.36	0.54
1:A:255:GLU:O	1:A:259:THR:HG23	2.08	0.54
1:B:20:ARG:NH2	1:B:119:ALA:O	2.43	0.52
1:B:30:ILE:HD11	2:B:301:2Y1:H21	1.90	0.52
1:B:213:GLU:OE1	1:B:217:LEU:HD22	2.10	0.51
1:A:158:TRP:CE2	1:A:162:MET:CG	2.92	0.51
1:A:161:TRP:CZ2	1:A:165:GLN:HG3	2.46	0.50
1:B:82:LEU:HD11	2:B:301:2Y1:H11	1.93	0.50
1:A:116:LEU:HB3	1:A:122:PRO:HB3	1.94	0.50
1:A:223:THR:HG21	1:A:228:LEU:HD12	1.94	0.49
1:A:158:TRP:NE1	1:A:162:MET:CG	2.76	0.49
1:B:34:LYS:HA	1:B:178:LEU:HD12	1.94	0.48
1:A:99:TYR:CD1	1:B:154:ILE:HG23	2.48	0.48
1:B:34:LYS:HA	1:B:178:LEU:CD1	2.44	0.48
1:A:26:ILE:N	1:A:26:ILE:CD1	2.78	0.47
1:A:31:ALA:HB1	1:A:188:ARG:HB3	1.95	0.47
1:A:161:TRP:CZ3	1:A:165:GLN:HG3	2.50	0.46
1:A:249:LEU:HG	4:A:416:HOH:O	2.14	0.46
1:A:40:ILE:O	1:A:44:LEU:HG	2.16	0.46
1:B:111:SER:HB3	1:B:124:LEU:HD21	1.98	0.46
1:A:94:PHE:O	1:A:98:THR:HG23	2.16	0.46
1:A:240:GLU:OE2	1:A:245:LYS:NZ	2.47	0.45
1:A:58:TRP:HA	1:A:75:GLN:OE1	2.17	0.45
1:A:228:LEU:O	1:A:231:VAL:HG12	2.16	0.45
1:B:202:LEU:O	1:B:206:GLU:HG3	2.18	0.44
1:B:31:ALA:HA	3:B:302:UDP:O3A	2.16	0.44
1:A:137:PHE:CD1	2:A:301:2Y1:H19	2.53	0.43
1:B:29:ASN:O	1:B:34:LYS:NZ	2.52	0.43
1:A:254:LYS:N	4:A:422:HOH:O	2.51	0.42
1:B:109:LEU:HG	1:B:170:LEU:HD21	2.00	0.42
1:A:226:ASP:N	1:A:226:ASP:OD1	2.53	0.42
1:B:109:LEU:HG	1:B:170:LEU:HD11	2.01	0.42
1:A:102:LEU:C	1:A:102:LEU:HD12	2.40	0.41
1:A:137:PHE:CE1	2:A:301:2Y1:H19	2.56	0.41
1:B:137:PHE:CE1	2:B:301:2Y1:H19	2.56	0.41
1:B:35:SER:HA	1:B:38:VAL:HG22	2.03	0.41
1:A:254:LYS:CA	4:A:422:HOH:O	2.67	0.41
1:A:166:PHE:CE1	1:B:165:GLN:HG3	2.56	0.40
1:A:209:HIS:O	1:A:213:GLU:N	2.42	0.40

*Continued on next page...*

Continued from previous page...

Atom-1	Atom-2	Interatomic distance (Å)	Clash overlap (Å)
1:B:38:VAL:HB	1:B:50:VAL:HG21	2.02	0.40
1:B:246:TYR:O	1:B:250:VAL:HG23	2.22	0.40
1:B:183:GLU:OE2	1:B:183:GLU:N	2.43	0.40

All (2) symmetry-related close contacts are listed below. The label for Atom-2 includes the symmetry operator and encoded unit-cell translations to be applied.

Atom-1	Atom-2	Interatomic distance (Å)	Clash overlap (Å)
4:A:429:HOH:O	4:B:436:HOH:O[3_655]	2.02	0.18
1:A:83:GLN:NE2	4:A:416:HOH:O[4_564]	2.11	0.09

### 5.3 Torsion angles [i](#)

#### 5.3.1 Protein backbone [i](#)

In the following table, the Percentiles column shows the percent Ramachandran outliers of the chain as a percentile score with respect to all X-ray entries followed by that with respect to entries of similar resolution.

The Analysed column shows the number of residues for which the backbone conformation was analysed, and the total number of residues.

Mol	Chain	Analysed	Favoured	Allowed	Outliers	Percentiles	
1	A	228/280 (81%)	217 (95%)	10 (4%)	1 (0%)	34	30
1	B	222/280 (79%)	212 (96%)	10 (4%)	0	100	100
All	All	450/560 (80%)	429 (95%)	20 (4%)	1 (0%)	47	44

All (1) Ramachandran outliers are listed below:

Mol	Chain	Res	Type
1	A	201	PRO

#### 5.3.2 Protein sidechains [i](#)

In the following table, the Percentiles column shows the percent sidechain outliers of the chain as a percentile score with respect to all X-ray entries followed by that with respect to entries of similar resolution.

The Analysed column shows the number of residues for which the sidechain conformation was

analysed, and the total number of residues.

Mol	Chain	Analysed	Rotameric	Outliers	Percentiles	
1	A	201/256 (78%)	191 (95%)	10 (5%)	24	20
1	B	195/256 (76%)	184 (94%)	11 (6%)	21	17
All	All	396/512 (77%)	375 (95%)	21 (5%)	22	18

All (21) residues with a non-rotameric sidechain are listed below:

Mol	Chain	Res	Type
1	A	26	ILE
1	A	38	VAL
1	A	42	LYS
1	A	102	LEU
1	A	111	SER
1	A	153	THR
1	A	168	GLN
1	A	192	ARG
1	A	200	ILE
1	A	221	LEU
1	B	22	LYS
1	B	59	SER
1	B	81	VAL
1	B	132	SER
1	B	146	SER
1	B	163	ASN
1	B	191	LEU
1	B	192	ARG
1	B	214	SER
1	B	223	THR
1	B	224	ASN

Sometimes sidechains can be flipped to improve hydrogen bonding and reduce clashes. All (3) such sidechains are listed below:

Mol	Chain	Res	Type
1	A	168	GLN
1	A	224	ASN
1	B	224	ASN

### 5.3.3 RNA [i](#)

There are no RNA molecules in this entry.

## 5.4 Non-standard residues in protein, DNA, RNA chains [i](#)

There are no non-standard protein/DNA/RNA residues in this entry.

## 5.5 Carbohydrates [i](#)

There are no monosaccharides in this entry.

## 5.6 Ligand geometry [i](#)

4 ligands are modelled in this entry.

In the following table, the Counts columns list the number of bonds (or angles) for which Mogul statistics could be retrieved, the number of bonds (or angles) that are observed in the model and the number of bonds (or angles) that are defined in the Chemical Component Dictionary. The Link column lists molecule types, if any, to which the group is linked. The Z score for a bond length (or angle) is the number of standard deviations the observed value is removed from the expected value. A bond length (or angle) with  $|Z| > 2$  is considered an outlier worth inspection. RMSZ is the root-mean-square of all Z scores of the bond lengths (or angles).

Mol	Type	Chain	Res	Link	Bond lengths			Bond angles		
					Counts	RMSZ	# Z  > 2	Counts	RMSZ	# Z  > 2
2	2Y1	B	301	-	29,33,33	1.94	6 (20%)	32,45,45	1.76	9 (28%)
3	UDP	B	302	-	24,26,26	1.26	3 (12%)	37,40,40	1.37	4 (10%)
2	2Y1	A	301	-	29,33,33	1.62	5 (17%)	32,45,45	1.96	9 (28%)
3	UDP	A	302	-	24,26,26	1.06	1 (4%)	37,40,40	1.73	6 (16%)

In the following table, the Chirals column lists the number of chiral outliers, the number of chiral centers analysed, the number of these observed in the model and the number defined in the Chemical Component Dictionary. Similar counts are reported in the Torsion and Rings columns. '-' means no outliers of that kind were identified.

Mol	Type	Chain	Res	Link	Chirals	Torsions	Rings
2	2Y1	B	301	-	-	4/16/21/21	0/3/3/3
3	UDP	B	302	-	-	3/16/32/32	0/2/2/2
2	2Y1	A	301	-	-	5/16/21/21	0/3/3/3
3	UDP	A	302	-	-	4/16/32/32	0/2/2/2

All (15) bond length outliers are listed below:

Mol	Chain	Res	Type	Atoms	Z	Observed(Å)	Ideal(Å)
2	B	301	2Y1	CBE-SAT	-6.79	1.76	1.83

*Continued on next page...*

*Continued from previous page...*

Mol	Chain	Res	Type	Atoms	Z	Observed(Å)	Ideal(Å)
2	A	301	2Y1	CBC-SAU	-4.74	1.67	1.73
2	A	301	2Y1	CBE-SAT	-4.63	1.79	1.83
2	B	301	2Y1	CBB-SAU	-3.87	1.66	1.74
2	B	301	2Y1	CBC-SAU	-3.58	1.68	1.73
3	B	302	UDP	C2-N1	2.95	1.43	1.38
2	B	301	2Y1	CBD-CBB	-2.65	1.37	1.42
2	A	301	2Y1	CAL-CAM	2.55	1.52	1.49
2	A	301	2Y1	CBD-CBB	-2.55	1.37	1.42
2	B	301	2Y1	OAR-CAY	2.45	1.41	1.37
2	B	301	2Y1	CBC-NAQ	2.38	1.34	1.31
3	A	302	UDP	C2-N1	2.23	1.42	1.38
3	B	302	UDP	C6-C5	2.16	1.40	1.35
2	A	301	2Y1	CBC-NAQ	2.15	1.34	1.31
3	B	302	UDP	C4-N3	-2.07	1.34	1.38

All (28) bond angle outliers are listed below:

Mol	Chain	Res	Type	Atoms	Z	Observed(°)	Ideal(°)
3	A	302	UDP	C4-N3-C2	-4.70	120.39	126.58
2	A	301	2Y1	C2-N3-C4	4.49	120.51	115.51
3	A	302	UDP	N3-C2-N1	4.48	120.84	114.89
2	B	301	2Y1	C2-N3-C4	4.35	120.35	115.51
2	A	301	2Y1	C2-N1-C6	4.31	120.31	115.51
2	B	301	2Y1	CAN-CBB-CBD	3.79	130.47	127.40
3	A	302	UDP	C5-C4-N3	3.77	120.48	114.84
3	B	302	UDP	C4-N3-C2	-3.52	121.94	126.58
3	A	302	UDP	O4-C4-C5	-3.46	119.08	125.16
3	B	302	UDP	N3-C2-N1	3.45	119.47	114.89
2	A	301	2Y1	CAN-CBB-CBD	-3.25	124.77	127.40
3	B	302	UDP	C5-C4-N3	3.24	119.69	114.84
2	B	301	2Y1	FAF-CAL-CAM	-3.20	104.84	110.61
2	A	301	2Y1	NAE-C4-N3	3.15	121.47	116.49
2	B	301	2Y1	NAD-C6-N1	3.10	121.39	116.49
2	A	301	2Y1	CAG-CAX-CAJ	2.79	122.11	118.16
3	A	302	UDP	PA-O3A-PB	-2.78	123.29	132.83
2	A	301	2Y1	N1-C2-N3	-2.76	121.89	126.95
2	B	301	2Y1	C2-N1-C6	2.76	118.58	115.51
2	A	301	2Y1	FAF-CAL-CAM	-2.60	105.91	110.61
2	A	301	2Y1	CAM-OAS-CAZ	-2.59	111.35	117.69
2	B	301	2Y1	OAS-CAM-CAL	-2.49	104.76	107.92
3	A	302	UDP	O2-C2-N1	-2.45	119.53	122.79
2	A	301	2Y1	CAK-CAN-CBB	-2.45	106.27	115.27

*Continued on next page...*

Continued from previous page...

Mol	Chain	Res	Type	Atoms	Z	Observed(°)	Ideal(°)
2	B	301	2Y1	N1-C2-N3	-2.37	122.61	126.95
3	B	302	UDP	O4-C4-C5	-2.33	121.06	125.16
2	B	301	2Y1	CAK-CAN-CBB	-2.19	107.21	115.27
2	B	301	2Y1	NAE-C4-N3	2.04	119.72	116.49

There are no chirality outliers.

All (16) torsion outliers are listed below:

Mol	Chain	Res	Type	Atoms
2	B	301	2Y1	FAF-CAL-CAM-OAS
3	A	302	UDP	C5'-O5'-PA-O1A
3	B	302	UDP	PA-O3A-PB-O2B
3	B	302	UDP	PA-O3A-PB-O3B
3	A	302	UDP	C3'-C4'-C5'-O5'
3	A	302	UDP	O4'-C4'-C5'-O5'
2	A	301	2Y1	CAY-CAZ-OAS-CAM
2	A	301	2Y1	CAJ-CAZ-OAS-CAM
3	A	302	UDP	C5'-O5'-PA-O3A
2	B	301	2Y1	CAJ-CAZ-OAS-CAM
2	A	301	2Y1	CAG-CAX-CBC-NAQ
2	A	301	2Y1	FAF-CAL-CAM-OAS
2	B	301	2Y1	CAY-CAZ-OAS-CAM
3	B	302	UDP	PA-O3A-PB-O1B
2	A	301	2Y1	CAJ-CAX-CBC-NAQ
2	B	301	2Y1	CAA-CAK-CAN-CBB

There are no ring outliers.

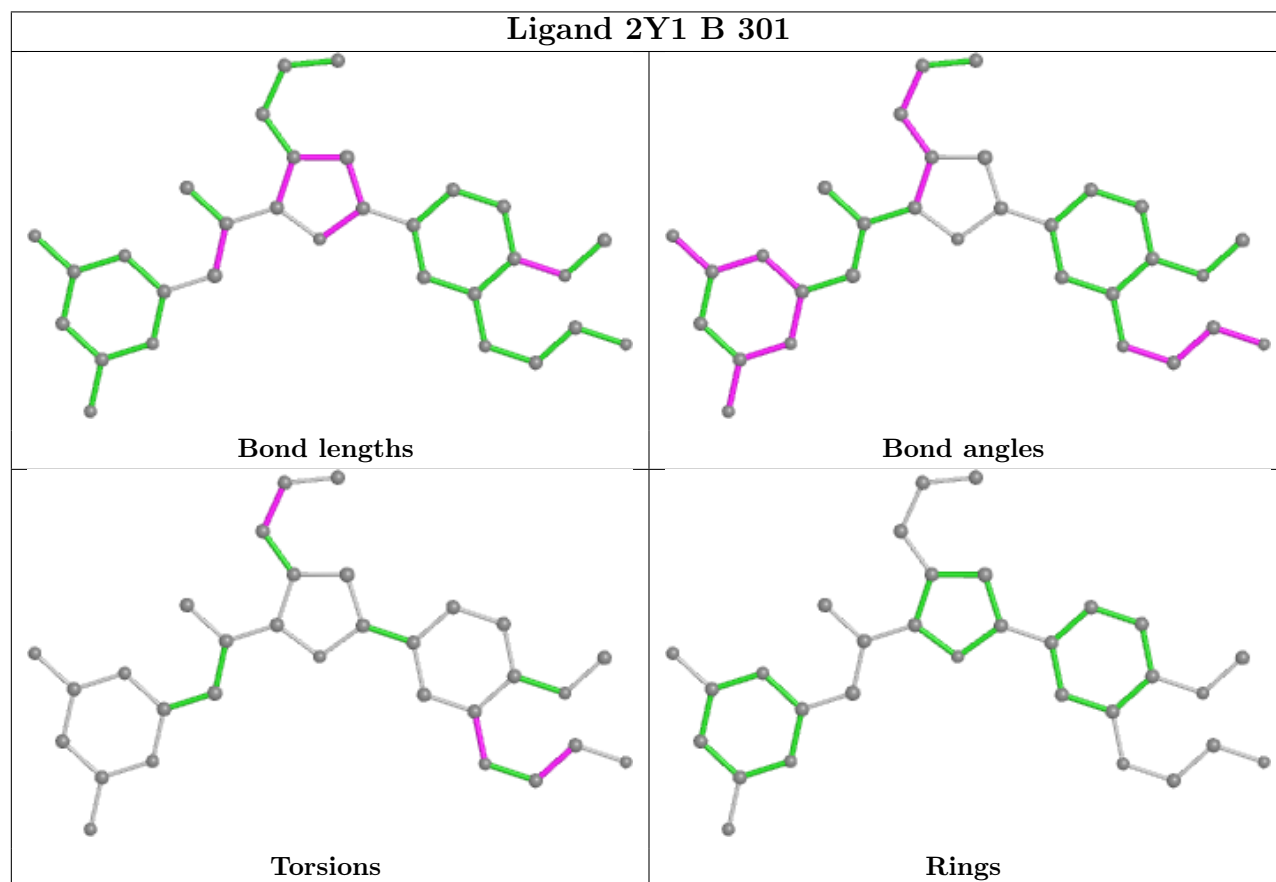
3 monomers are involved in 6 short contacts:

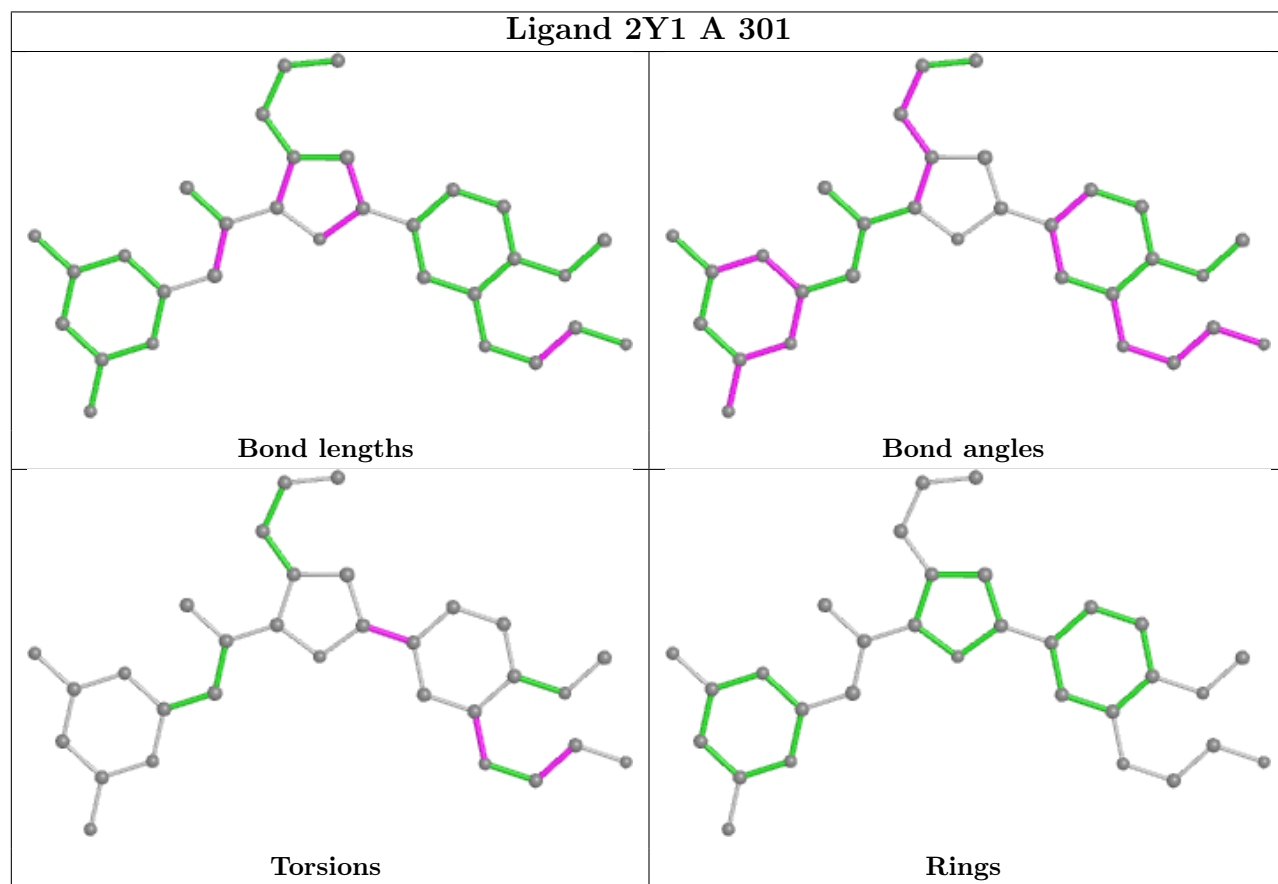
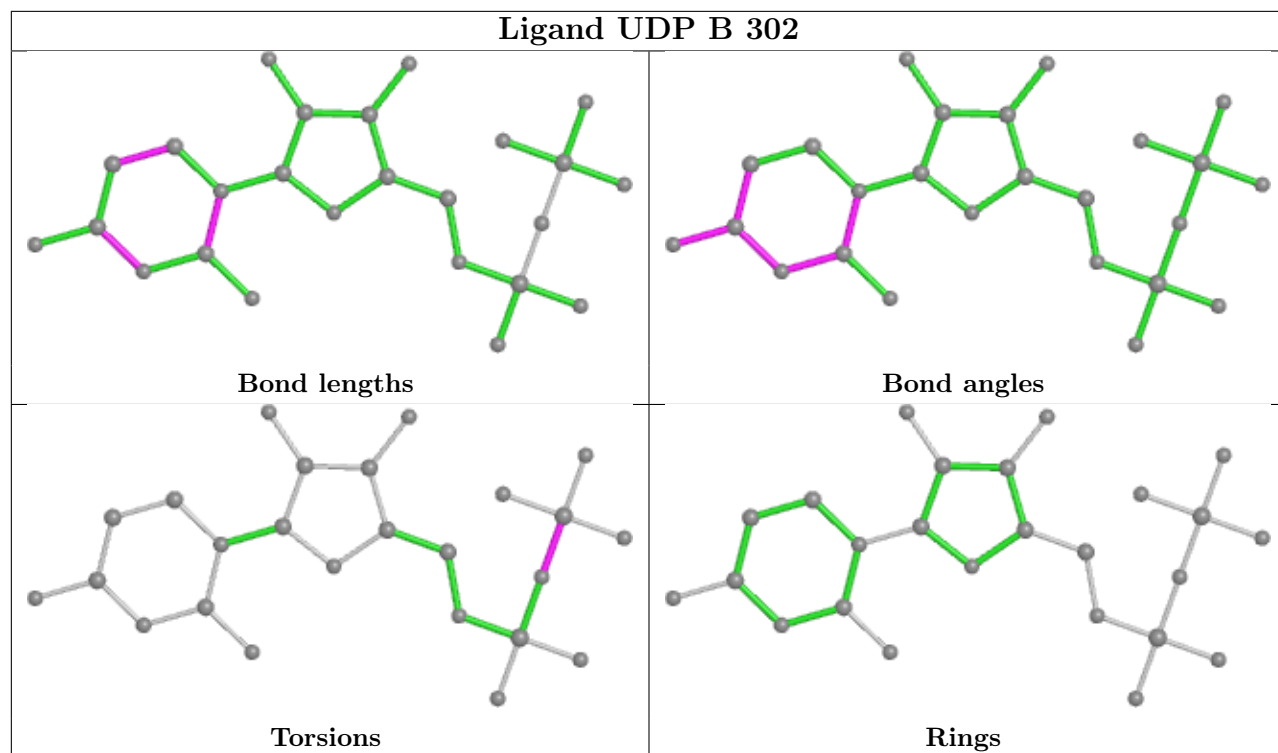
Mol	Chain	Res	Type	Clashes	Symm-Clashes
2	B	301	2Y1	3	0
3	B	302	UDP	1	0
2	A	301	2Y1	2	0

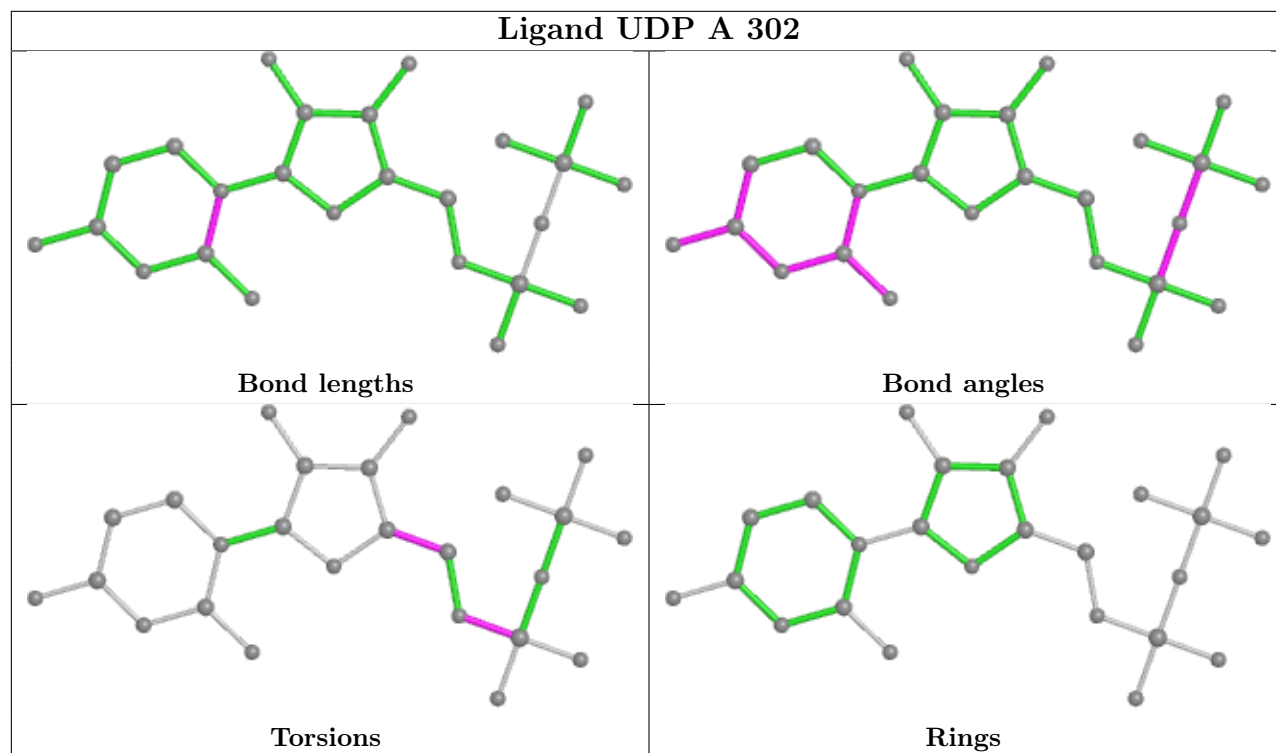
The following is a two-dimensional graphical depiction of Mogul quality analysis of bond lengths, bond angles, torsion angles, and ring geometry for all instances of the Ligand of Interest. In addition, ligands with molecular weight > 250 and outliers as shown on the validation Tables will also be included. For torsion angles, if less than 5% of the Mogul distribution of torsion angles is within 10 degrees of the torsion angle in question, then that torsion angle is considered an outlier. Any bond that is central to one or more torsion angles identified as an outlier by Mogul will be highlighted in the graph. For rings, the root-mean-square deviation (RMSD) between the ring in question and similar rings identified by Mogul is calculated over all ring torsion angles. If the



average RMSD is greater than 60 degrees and the minimal RMSD between the ring in question and any Mogul-identified rings is also greater than 60 degrees, then that ring is considered an outlier. The outliers are highlighted in purple. The color gray indicates Mogul did not find sufficient equivalents in the CSD to analyse the geometry.







## 5.7 Other polymers [i](#)

There are no such residues in this entry.

## 5.8 Polymer linkage issues [i](#)

There are no chain breaks in this entry.

## 6 Fit of model and data [i](#)

### 6.1 Protein, DNA and RNA chains [i](#)

In the following table, the column labelled '#RSRZ > 2' contains the number (and percentage) of RSRZ outliers, followed by percent RSRZ outliers for the chain as percentile scores relative to all X-ray entries and entries of similar resolution. The OWAB column contains the minimum, median, 95<sup>th</sup> percentile and maximum values of the occupancy-weighted average B-factor per residue. The column labelled 'Q < 0.9' lists the number of (and percentage) of residues with an average occupancy less than 0.9.

Mol	Chain	Analysed	<RSRZ>	#RSRZ>2	OWAB(Å <sup>2</sup> )	Q<0.9
1	A	231/280 (82%)	-0.01	2 (0%) 84 83	38, 51, 67, 77	0
1	B	227/280 (81%)	-0.02	4 (1%) 68 66	37, 50, 69, 74	0
All	All	458/560 (81%)	-0.01	6 (1%) 77 76	37, 50, 69, 77	0

All (6) RSRZ outliers are listed below:

Mol	Chain	Res	Type	RSRZ
1	A	199	GLY	2.7
1	B	194	ARG	2.7
1	A	193	GLY	2.4
1	B	225	PHE	2.4
1	B	116	LEU	2.3
1	B	199	GLY	2.2

### 6.2 Non-standard residues in protein, DNA, RNA chains [i](#)

There are no non-standard protein/DNA/RNA residues in this entry.

### 6.3 Carbohydrates [i](#)

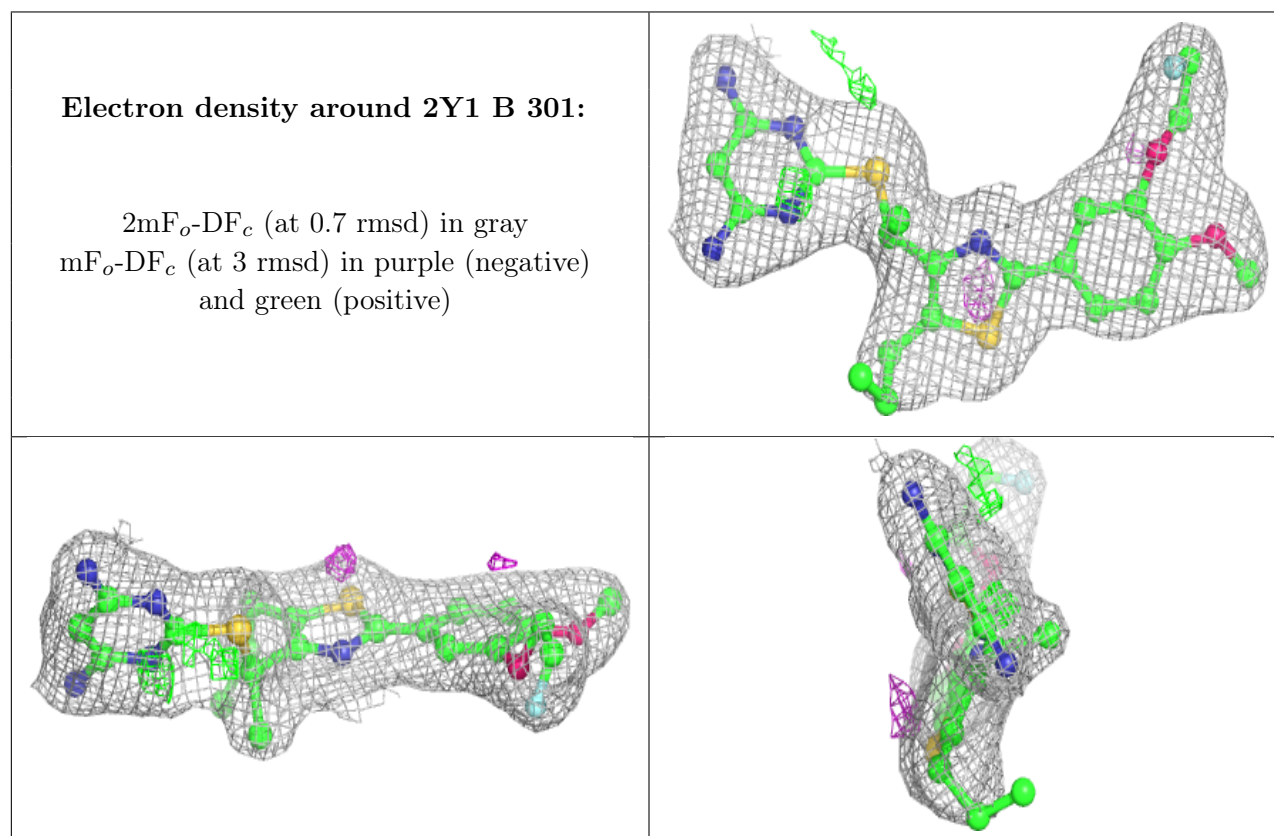
There are no monosaccharides in this entry.

### 6.4 Ligands [i](#)

In the following table, the Atoms column lists the number of modelled atoms in the group and the number defined in the chemical component dictionary. The B-factors column lists the minimum, median, 95<sup>th</sup> percentile and maximum values of B factors of atoms in the group. The column labelled 'Q < 0.9' lists the number of atoms with occupancy less than 0.9.

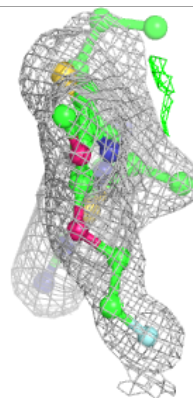
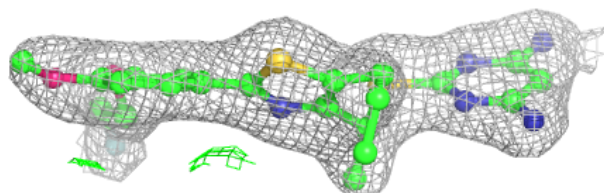
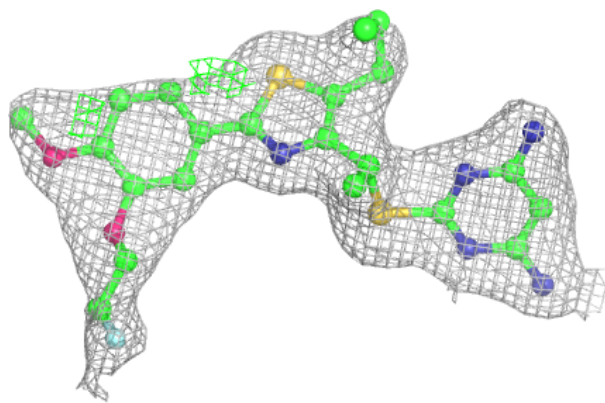
Mol	Type	Chain	Res	Atoms	RSCC	RSR	B-factors( $\text{\AA}^2$ )	Q<0.9
2	2Y1	B	301	31/31	0.95	0.13	39,54,60,64	0
2	2Y1	A	301	31/31	0.97	0.12	40,55,67,71	0
3	UDP	A	302	25/25	0.97	0.11	43,53,57,59	0
3	UDP	B	302	25/25	0.97	0.10	35,55,60,64	0

The following is a graphical depiction of the model fit to experimental electron density of all instances of the Ligand of Interest. In addition, ligands with molecular weight > 250 and outliers as shown on the geometry validation Tables will also be included. Each fit is shown from different orientation to approximate a three-dimensional view.



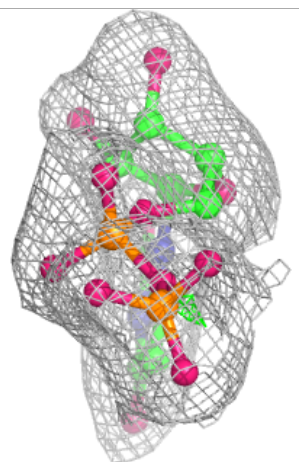
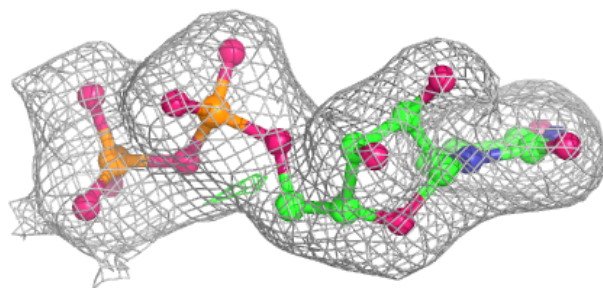
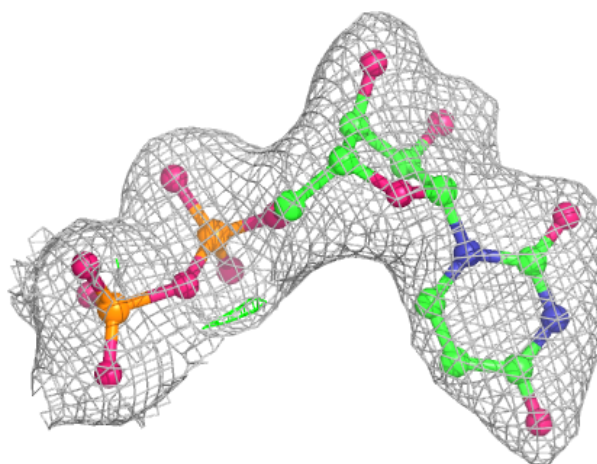
**Electron density around 2Y1 A 301:**

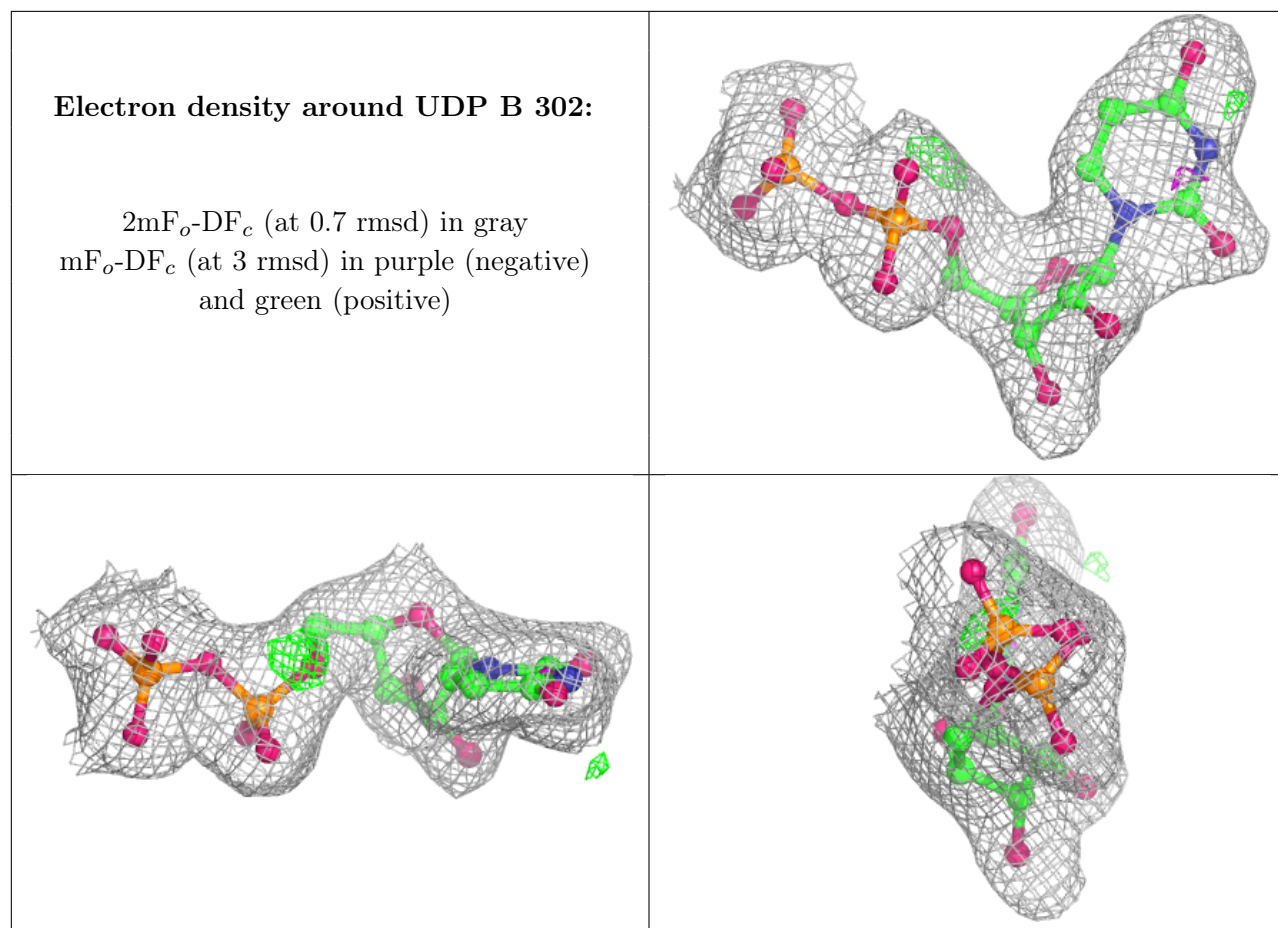
$2mF_o-DF_c$  (at 0.7 rmsd) in gray  
 $mF_o-DF_c$  (at 3 rmsd) in purple (negative)  
and green (positive)



**Electron density around UDP A 302:**

$2mF_o-DF_c$  (at 0.7 rmsd) in gray  
 $mF_o-DF_c$  (at 3 rmsd) in purple (negative)  
and green (positive)





## 6.5 Other polymers [i](#)

There are no such residues in this entry.