



# Full wwPDB X-ray Structure Validation Report ⓘ

Sep 21, 2020 – 09:05 PM BST

PDB ID : 6Q1N  
Title : Glucocerebrosidase in complex with pharmacological chaperone IMX8  
Authors : Vickers, C.; Withers, S.G.; Boraston, A.B.  
Deposited on : 2019-08-05  
Resolution : 2.53 Å(reported)

This is a Full wwPDB X-ray Structure Validation Report for a publicly released PDB entry.

We welcome your comments at [validation@mail.wwpdb.org](mailto:validation@mail.wwpdb.org)

A user guide is available at

<https://www.wwpdb.org/validation/2017/XrayValidationReportHelp>

with specific help available everywhere you see the ⓘ symbol.

---

The following versions of software and data (see [references ⓘ](#)) were used in the production of this report:

MolProbity : 4.02b-467  
Mogul : 1.8.5 (274361), CSD as541be (2020)  
Xtriage (Phenix) : 1.13  
EDS : 2.14.6  
buster-report : 1.1.7 (2018)  
Percentile statistics : 20191225.v01 (using entries in the PDB archive December 25th 2019)  
Refmac : 5.8.0158  
CCP4 : 7.0.044 (Gargrove)  
Ideal geometry (proteins) : Engh & Huber (2001)  
Ideal geometry (DNA, RNA) : Parkinson et al. (1996)  
Validation Pipeline (wwPDB-VP) : 2.14.6

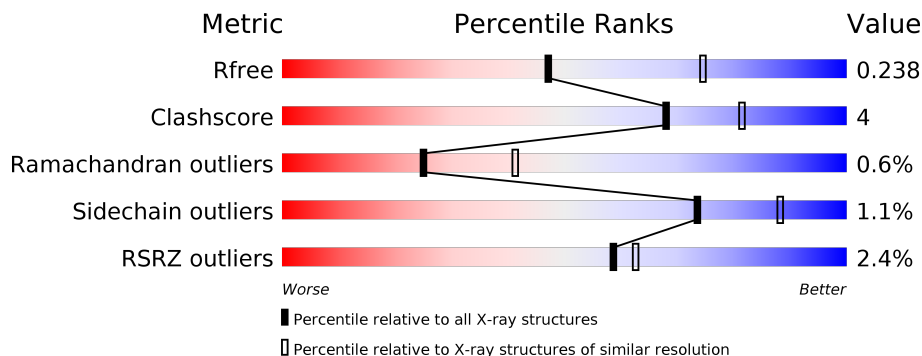
# 1 Overall quality at a glance i

The following experimental techniques were used to determine the structure:

*X-RAY DIFFRACTION*

The reported resolution of this entry is 2.53 Å.

Percentile scores (ranging between 0-100) for global validation metrics of the entry are shown in the following graphic. The table shows the number of entries on which the scores are based.



Metric	Whole archive (#Entries)	Similar resolution (#Entries, resolution range(Å))
$R_{free}$	130704	5743 (2.54-2.50)
Clashscore	141614	6463 (2.54-2.50)
Ramachandran outliers	138981	6335 (2.54-2.50)
Sidechain outliers	138945	6337 (2.54-2.50)
RSRZ outliers	127900	5630 (2.54-2.50)

The table below summarises the geometric issues observed across the polymeric chains and their fit to the electron density. The red, orange, yellow and green segments on the lower bar indicate the fraction of residues that contain outliers for  $\geq 3$ , 2, 1 and 0 types of geometric quality criteria respectively. A grey segment represents the fraction of residues that are not modelled. The numeric value for each fraction is indicated below the corresponding segment, with a dot representing fractions  $\leq 5\%$ . The upper red bar (where present) indicates the fraction of residues that have poor fit to the electron density. The numeric value is given above the bar.

Mol	Chain	Length	Quality of chain
1	A	497	<div style="display: flex; align-items: center;"> <div style="width: 2%; height: 10px; background-color: red; margin-right: 5px;"></div> <div style="width: 90%; height: 10px; background-color: green; margin-right: 5px;"></div> <div style="width: 7%; height: 10px; background-color: yellow; margin-right: 5px;"></div> <div style="width: 2%; height: 10px; background-color: grey;"></div> </div> <p style="text-align: center;">2%      90%      7% ..</p>
1	B	497	<div style="display: flex; align-items: center;"> <div style="width: 3%; height: 10px; background-color: red; margin-right: 5px;"></div> <div style="width: 89%; height: 10px; background-color: green; margin-right: 5px;"></div> <div style="width: 10%; height: 10px; background-color: yellow; margin-right: 5px;"></div> <div style="width: 2%; height: 10px; background-color: grey;"></div> </div> <p style="text-align: center;">3%      89%      10% ..</p>
2	C	2	<div style="width: 100%; height: 10px; background-color: green;"></div> <p style="text-align: center;">100%</p>
3	D	2	<div style="width: 100%; height: 10px; background-color: green;"></div> <p style="text-align: center;">100%</p>
4	E	3	<div style="display: flex; align-items: center;"> <div style="width: 33%; height: 10px; background-color: green; margin-right: 5px;"></div> <div style="width: 33%; height: 10px; background-color: yellow; margin-right: 5px;"></div> <div style="width: 33%; height: 10px; background-color: orange;"></div> </div> <p style="text-align: center;">33%      33%      33%</p>

The following table lists non-polymeric compounds, carbohydrate monomers and non-standard residues in protein, DNA, RNA chains that are outliers for geometric or electron-density-fit criteria:

<b>Mol</b>	<b>Type</b>	<b>Chain</b>	<b>Res</b>	<b>Chirality</b>	<b>Geometry</b>	<b>Clashes</b>	<b>Electron density</b>
2	NAG	C	2	-	-	-	X

## 2 Entry composition [i](#)

There are 9 unique types of molecules in this entry. The entry contains 8359 atoms, of which 0 are hydrogens and 0 are deuteriums.

In the tables below, the ZeroOcc column contains the number of atoms modelled with zero occupancy, the AltConf column contains the number of residues with at least one atom in alternate conformation and the Trace column contains the number of residues modelled with at most 2 atoms.

- Molecule 1 is a protein called Glucosylceramidase.

Mol	Chain	Residues	Atoms					ZeroOcc	AltConf	Trace
			Total	C	N	O	S			
1	A	489	Total 3842	C 2471	N 656	O 699	S 16	0	0	0
1	B	494	Total 3868	C 2489	N 662	O 701	S 16	0	0	0

- Molecule 2 is an oligosaccharide called 2-acetamido-2-deoxy-beta-D-glucopyranose-(1-4)-2-acetamido-2-deoxy-beta-D-glucopyranose.



Mol	Chain	Residues	Atoms				ZeroOcc	AltConf	Trace
			Total	C	N	O			
2	C	2	Total 28	C 16	N 2	O 10	0	0	0

- Molecule 3 is an oligosaccharide called alpha-L-fucopyranose-(1-6)-2-acetamido-2-deoxy-beta-D-glucopyranose.



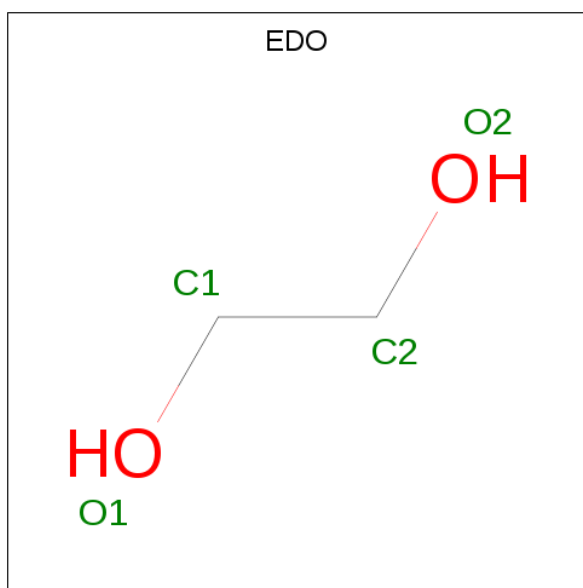
Mol	Chain	Residues	Atoms				ZeroOcc	AltConf	Trace
			Total	C	N	O			
3	D	2	Total 24	C 14	N 1	O 9	0	0	0

- Molecule 4 is an oligosaccharide called alpha-D-mannopyranose-(1-4)-2-acetamido-2-deoxy-beta-D-glucopyranose-(1-4)-2-acetamido-2-deoxy-beta-D-glucopyranose.



Mol	Chain	Residues	Atoms			ZeroOcc	AltConf	Trace	
			Total	C	N				O
4	E	3	39	22	2	15	0	0	0

- Molecule 5 is 1,2-ETHANEDIOL (three-letter code: EDO) (formula: C<sub>2</sub>H<sub>6</sub>O<sub>2</sub>).



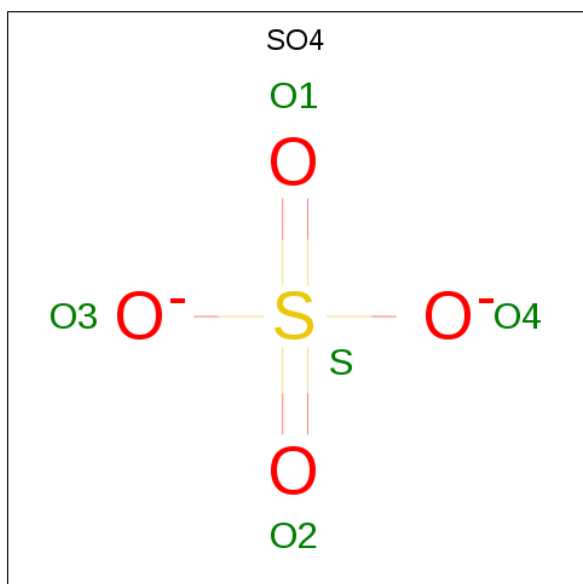
Mol	Chain	Residues	Atoms			ZeroOcc	AltConf
			Total	C	O		
5	A	1	4	2	2	0	0
5	A	1	4	2	2	0	0
5	A	1	4	2	2	0	0
5	A	1	4	2	2	0	0
5	A	1	4	2	2	0	0
5	A	1	4	2	2	0	0
5	A	1	4	2	2	0	0
5	A	1	4	2	2	0	0

*Continued on next page...*

Continued from previous page...

Mol	Chain	Residues	Atoms	ZeroOcc	AltConf
5	A	1	Total C O 4 2 2	0	0
5	B	1	Total C O 4 2 2	0	0
5	B	1	Total C O 4 2 2	0	0
5	B	1	Total C O 4 2 2	0	0
5	B	1	Total C O 4 2 2	0	0
5	B	1	Total C O 4 2 2	0	0
5	B	1	Total C O 4 2 2	0	0
5	B	1	Total C O 4 2 2	0	0

- Molecule 6 is SULFATE ION (three-letter code: SO4) (formula: O<sub>4</sub>S).



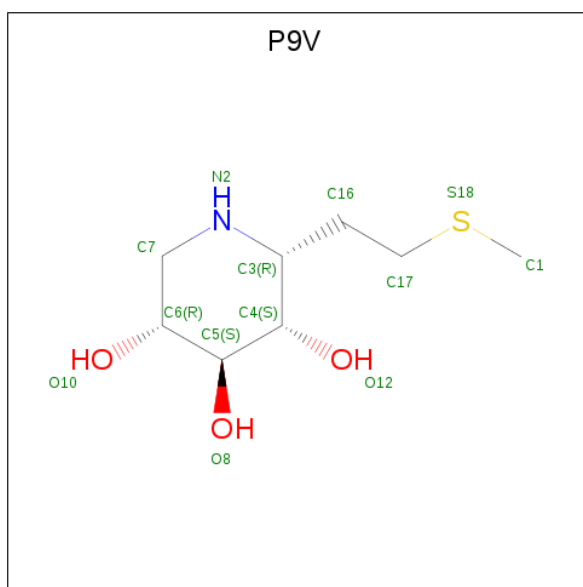
Mol	Chain	Residues	Atoms	ZeroOcc	AltConf
6	A	1	Total O S 5 4 1	0	0
6	A	1	Total O S 5 4 1	0	0
6	A	1	Total O S 5 4 1	0	0

Continued on next page...

*Continued from previous page...*

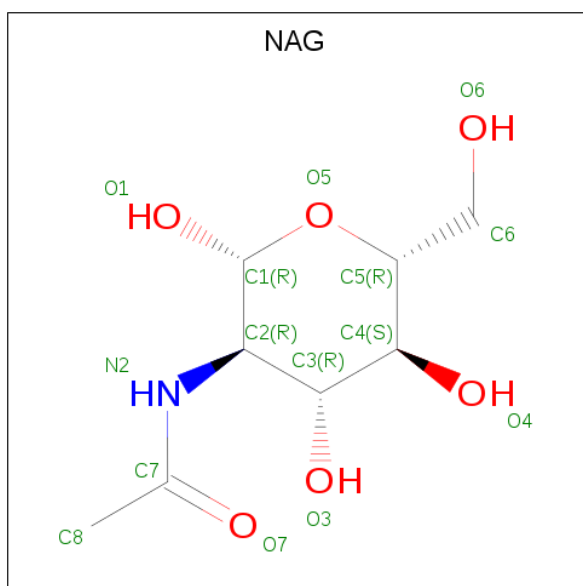
Mol	Chain	Residues	Atoms			ZeroOcc	AltConf
6	A	1	Total	O	S	0	0
			5	4	1		
6	A	1	Total	O	S	0	0
			5	4	1		
6	A	1	Total	O	S	0	0
			5	4	1		
6	A	1	Total	O	S	0	0
			5	4	1		
6	B	1	Total	O	S	0	0
			5	4	1		
6	B	1	Total	O	S	0	0
			5	4	1		
6	B	1	Total	O	S	0	0
			5	4	1		
6	B	1	Total	O	S	0	0
			5	4	1		
6	B	1	Total	O	S	0	0
			5	4	1		
6	B	1	Total	O	S	0	0
			5	4	1		
6	B	1	Total	O	S	0	0
			5	4	1		
6	B	1	Total	O	S	0	0
			5	4	1		

- Molecule 7 is (2R,3S,4S,5R)-2-[2-(methylsulfanyl)ethyl]piperidine-3,4,5-triol (three-letter code: P9V) (formula: C<sub>8</sub>H<sub>17</sub>NO<sub>3</sub>S) (labeled as "Ligand of Interest" by author).



Mol	Chain	Residues	Atoms					ZeroOcc	AltConf	
			Total	C	N	O	S			
7	A	1	Total	13	8	1	3	1	0	0
7	B	1	Total	13	8	1	3	1	0	0

- Molecule 8 is 2-acetamido-2-deoxy-beta-D-glucopyranose (three-letter code: NAG) (formula:  $C_8H_{15}NO_6$ ).



Mol	Chain	Residues	Atoms				ZeroOcc	AltConf	
			Total	C	N	O			
8	B	1	Total	14	8	1	5	0	0

*Continued on next page...*



*Continued from previous page...*

Mol	Chain	Residues	Atoms				ZeroOcc	AltConf
			Total	C	N	O		
8	B	1	14	8	1	5	0	0

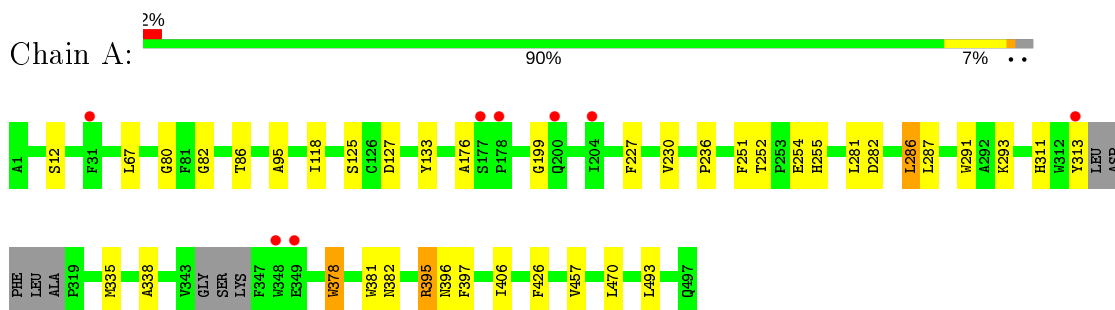
- Molecule 9 is water.

Mol	Chain	Residues	Atoms		ZeroOcc	AltConf
9	A	198	Total	O	0	0
			198	198		
9	B	157	Total	O	0	0
			157	157		

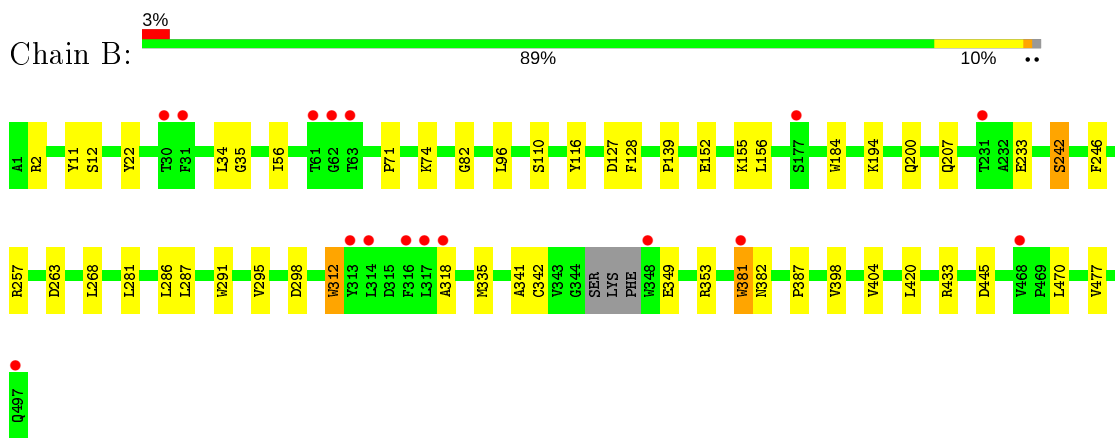
### 3 Residue-property plots [i](#)

These plots are drawn for all protein, RNA, DNA and oligosaccharide chains in the entry. The first graphic for a chain summarises the proportions of the various outlier classes displayed in the second graphic. The second graphic shows the sequence view annotated by issues in geometry and electron density. Residues are color-coded according to the number of geometric quality criteria for which they contain at least one outlier: green = 0, yellow = 1, orange = 2 and red = 3 or more. A red dot above a residue indicates a poor fit to the electron density ( $RSRZ > 2$ ). Stretches of 2 or more consecutive residues without any outlier are shown as a green connector. Residues present in the sample, but not in the model, are shown in grey.

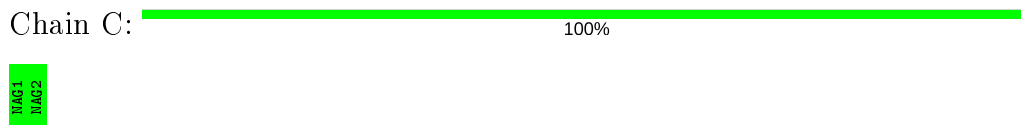
- Molecule 1: Glucosylceramidase



- Molecule 1: Glucosylceramidase



- Molecule 2: 2-acetamido-2-deoxy-beta-D-glucopyranose-(1-4)-2-acetamido-2-deoxy-beta-D-glucopyranose



- Molecule 3: alpha-L-fucopyranose-(1-6)-2-acetamido-2-deoxy-beta-D-glucopyranose



MAG1  
FUC2

- Molecule 4: alpha-D-mannopyranose-(1-4)-2-acetamido-2-deoxy-beta-D-glucopyranose-(1-4)-2-acetamido-2-deoxy-beta-D-glucopyranose

Chain E:  33% 33% 33%

MAG1  
MAG2  
MAN3

## 4 Data and refinement statistics

Property	Value	Source
Space group	C 2 2 21	Depositor
Cell constants a, b, c, $\alpha$ , $\beta$ , $\gamma$	109.94Å 285.06Å 91.81Å 90.00° 90.00° 90.00°	Depositor
Resolution (Å)	29.92 – 2.53 29.92 – 2.53	Depositor EDS
% Data completeness (in resolution range)	90.8 (29.92-2.53) 90.8 (29.92-2.53)	Depositor EDS
$R_{merge}$	0.08	Depositor
$R_{sym}$	(Not available)	Depositor
$\langle I/\sigma(I) \rangle$ <sup>1</sup>	5.21 (at 2.54Å)	Xtrriage
Refinement program	PHENIX 1.13_2998	Depositor
R, $R_{free}$	0.195 , 0.238 0.195 , 0.238	Depositor DCC
$R_{free}$ test set	2215 reflections (4.99%)	wwPDB-VP
Wilson B-factor (Å <sup>2</sup> )	40.0	Xtrriage
Anisotropy	0.158	Xtrriage
Bulk solvent $k_{sol}$ (e/Å <sup>3</sup> ), $B_{sol}$ (Å <sup>2</sup> )	0.34 , 36.8	EDS
L-test for twinning <sup>2</sup>	$\langle  L  \rangle = 0.53$ , $\langle L^2 \rangle = 0.37$	Xtrriage
Estimated twinning fraction	No twinning to report.	Xtrriage
$F_o, F_c$ correlation	0.94	EDS
Total number of atoms	8359	wwPDB-VP
Average B, all atoms (Å <sup>2</sup> )	39.0	wwPDB-VP

Xtrriage's analysis on translational NCS is as follows: *The largest off-origin peak in the Patterson function is 4.52% of the height of the origin peak. No significant pseudotranslation is detected.*

<sup>1</sup>Intensities estimated from amplitudes.

<sup>2</sup>Theoretical values of  $\langle |L| \rangle$ ,  $\langle L^2 \rangle$  for acentric reflections are 0.5, 0.333 respectively for untwinned datasets, and 0.375, 0.2 for perfectly twinned datasets.

## 5 Model quality [i](#)

### 5.1 Standard geometry [i](#)

Bond lengths and bond angles in the following residue types are not validated in this section: NAG, SO4, EDO, P9V, FUC, MAN

The Z score for a bond length (or angle) is the number of standard deviations the observed value is removed from the expected value. A bond length (or angle) with  $|Z| > 5$  is considered an outlier worth inspection. RMSZ is the root-mean-square of all Z scores of the bond lengths (or angles).

Mol	Chain	Bond lengths		Bond angles	
		RMSZ	# Z  >5	RMSZ	# Z  >5
1	A	0.26	0/3957	0.45	0/5395
1	B	0.26	0/3986	0.45	0/5439
All	All	0.26	0/7943	0.45	0/10834

There are no bond length outliers.

There are no bond angle outliers.

There are no chirality outliers.

There are no planarity outliers.

### 5.2 Too-close contacts [i](#)

In the following table, the Non-H and H(model) columns list the number of non-hydrogen atoms and hydrogen atoms in the chain respectively. The H(added) column lists the number of hydrogen atoms added and optimized by MolProbity. The Clashes column lists the number of clashes within the asymmetric unit, whereas Symm-Clashes lists symmetry related clashes.

Mol	Chain	Non-H	H(model)	H(added)	Clashes	Symm-Clashes
1	A	3842	0	3737	25	0
1	B	3868	0	3746	32	0
2	C	28	0	25	0	0
3	D	24	0	22	0	0
4	E	39	0	34	2	0
5	A	36	0	54	2	0
5	B	28	0	42	1	0
6	A	35	0	0	2	0
6	B	50	0	0	1	0
7	A	13	0	0	2	0
7	B	13	0	0	1	0

*Continued on next page...*

*Continued from previous page...*

Mol	Chain	Non-H	H(model)	H(added)	Clashes	Symm-Clashes
8	B	28	0	26	0	0
9	A	198	0	0	4	1
9	B	157	0	0	5	0
All	All	8359	0	7686	60	1

The all-atom clashscore is defined as the number of clashes found per 1000 atoms (including hydrogen atoms). The all-atom clashscore for this structure is 4.

All (60) close contacts within the same asymmetric unit are listed below, sorted by their clash magnitude.

Atom-1	Atom-2	Interatomic distance (Å)	Clash overlap (Å)
1:A:95:ALA:HB1	1:A:406:ILE:HD13	1.66	0.78
1:A:252:THR:OG1	9:A:701:HOH:O	2.03	0.75
9:B:701:HOH:O	4:E:2:NAG:O7	2.13	0.66
1:A:255:HIS:N	9:A:701:HOH:O	2.15	0.65
1:A:282:ASP:OD2	1:A:311:HIS:NE2	2.30	0.64
1:A:176:ALA:HB3	1:A:230:VAL:HG12	1.82	0.61
1:A:199:GLY:H	5:A:608:EDO:H22	1.65	0.60
1:B:2:ARG:HD3	1:B:22:TYR:CE1	2.38	0.59
1:B:56:ILE:HG21	1:B:477:VAL:HG12	1.85	0.59
1:A:67:LEU:HG	1:A:470:LEU:HD11	1.85	0.59
4:E:2:NAG:H61	4:E:3:MAN:H2	1.85	0.58
1:B:286:LEU:HD23	1:B:318:ALA:HB2	1.88	0.56
1:B:194:LYS:HB2	1:B:242:SER:HA	1.89	0.54
1:B:312:TRP:CD1	1:B:341:ALA:HA	2.42	0.54
1:A:254:GLU:HG2	5:A:606:EDO:H12	1.89	0.53
1:B:127:ASP:HB3	1:B:246:PHE:CG	2.43	0.53
6:A:620:SO4:O2	9:A:702:HOH:O	2.18	0.52
1:A:287:LEU:HB3	1:A:291:TRP:CD1	2.45	0.52
1:B:12:SER:OG	6:B:613:SO4:O3	2.24	0.51
1:A:313:TYR:HD2	7:A:621:P9V:C1	2.24	0.51
1:B:433:ARG:NH2	9:B:704:HOH:O	2.44	0.51
1:A:236:PRO:HB2	1:A:251:PHE:HB2	1.93	0.50
1:B:155:LYS:NZ	9:B:708:HOH:O	2.35	0.50
1:B:257:ARG:HG3	1:B:295:VAL:HA	1.93	0.49
1:B:445:ASP:OD1	9:B:702:HOH:O	2.20	0.49
1:A:338:ALA:HB3	1:A:378:TRP:HA	1.95	0.49
1:B:96:LEU:HD21	1:B:404:VAL:HG13	1.93	0.49
1:B:257:ARG:HD2	1:B:298:ASP:OD2	2.13	0.48
1:B:387:PRO:HD3	1:B:404:VAL:O	2.14	0.47
1:B:139:PRO:HA	1:B:184:TRP:CD1	2.50	0.47

*Continued on next page...*

*Continued from previous page...*

Atom-1	Atom-2	Interatomic distance (Å)	Clash overlap (Å)
1:B:312:TRP:HE1	1:B:342:CYS:H	1.62	0.47
1:B:381:TRP:CD1	1:B:382:ASN:ND2	2.83	0.46
1:A:426:PHE:HB3	1:A:493:LEU:HD21	1.96	0.46
1:A:395:ARG:O	1:A:397:PHE:N	2.49	0.46
1:B:11:TYR:HD1	1:B:353:ARG:HH11	1.64	0.46
1:A:82:GLY:HA3	1:A:118:ILE:O	2.16	0.45
1:B:127:ASP:OD1	7:B:623:P9V:O10	2.34	0.45
1:B:71:PRO:O	1:B:74:LYS:HE2	2.17	0.45
1:B:56:ILE:HD13	1:B:477:VAL:HG11	1.99	0.45
1:B:287:LEU:HB3	1:B:291:TRP:CD1	2.52	0.44
1:B:152:GLU:HA	1:B:156:LEU:HD12	2.01	0.43
1:A:127:ASP:OD1	7:A:621:P9V:O10	2.36	0.43
1:B:207:GLN:NE2	1:B:263:ASP:OD1	2.36	0.43
1:B:268:LEU:HB3	5:B:609:EDO:H22	2.00	0.43
1:A:80:GLY:C	1:A:118:ILE:HD12	2.39	0.42
1:A:381:TRP:CD1	1:A:382:ASN:OD1	2.72	0.42
1:A:12:SER:OG	6:A:614:SO4:O4	2.28	0.42
1:A:293:LYS:NZ	9:A:726:HOH:O	2.49	0.41
1:B:82:GLY:HA2	1:B:116:TYR:CD1	2.55	0.41
1:A:86:THR:OG1	1:A:382:ASN:ND2	2.51	0.41
1:A:457:VAL:HG22	1:A:493:LEU:HD23	2.02	0.41
1:B:128:PHE:CZ	1:B:398:VAL:HG22	2.56	0.41
1:B:34:LEU:HD12	1:B:35:GLY:H	1.85	0.41
1:B:116:TYR:OH	1:B:420:LEU:HD13	2.21	0.41
1:A:176:ALA:HB2	1:A:227:PHE:CE2	2.56	0.40
1:A:286:LEU:HD12	1:A:287:LEU:HG	2.03	0.40
1:B:381:TRP:NE1	1:B:382:ASN:ND2	2.69	0.40
1:A:125:SER:HB3	1:A:133:TYR:CD2	2.56	0.40
1:B:349:GLU:N	9:B:718:HOH:O	2.43	0.40
1:B:312:TRP:CD1	1:B:312:TRP:C	2.94	0.40

All (1) symmetry-related close contacts are listed below. The label for Atom-2 includes the symmetry operator and encoded unit-cell translations to be applied.

Atom-1	Atom-2	Interatomic distance (Å)	Clash overlap (Å)
9:A:735:HOH:O	9:A:882:HOH:O[3_455]	2.14	0.06

## 5.3 Torsion angles [i](#)

### 5.3.1 Protein backbone [i](#)

In the following table, the Percentiles column shows the percent Ramachandran outliers of the chain as a percentile score with respect to all X-ray entries followed by that with respect to entries of similar resolution.

The Analysed column shows the number of residues for which the backbone conformation was analysed, and the total number of residues.

Mol	Chain	Analysed	Favoured	Allowed	Outliers	Percentiles	
1	A	483/497 (97%)	457 (95%)	23 (5%)	3 (1%)	25	41
1	B	490/497 (99%)	468 (96%)	19 (4%)	3 (1%)	25	41
All	All	973/994 (98%)	925 (95%)	42 (4%)	6 (1%)	25	41

All (6) Ramachandran outliers are listed below:

Mol	Chain	Res	Type
1	A	396	ASN
1	A	395	ARG
1	B	381	TRP
1	A	281	LEU
1	B	281	LEU
1	B	233	GLU

### 5.3.2 Protein sidechains [i](#)

In the following table, the Percentiles column shows the percent sidechain outliers of the chain as a percentile score with respect to all X-ray entries followed by that with respect to entries of similar resolution.

The Analysed column shows the number of residues for which the sidechain conformation was analysed, and the total number of residues.

Mol	Chain	Analysed	Rotameric	Outliers	Percentiles	
1	A	413/424 (97%)	410 (99%)	3 (1%)	84	93
1	B	412/424 (97%)	406 (98%)	6 (2%)	65	83
All	All	825/848 (97%)	816 (99%)	9 (1%)	73	88

All (9) residues with a non-rotameric sidechain are listed below:



Mol	Chain	Res	Type
1	A	286	LEU
1	A	335	MET
1	A	378	TRP
1	B	110	SER
1	B	200	GLN
1	B	242	SER
1	B	312	TRP
1	B	335	MET
1	B	470	LEU

Some sidechains can be flipped to improve hydrogen bonding and reduce clashes. All (1) such sidechains are listed below:

Mol	Chain	Res	Type
1	B	200	GLN

### 5.3.3 RNA [i](#)

There are no RNA molecules in this entry.

## 5.4 Non-standard residues in protein, DNA, RNA chains [i](#)

There are no non-standard protein/DNA/RNA residues in this entry.

## 5.5 Carbohydrates [i](#)

7 monosaccharides are modelled in this entry.

In the following table, the Counts columns list the number of bonds (or angles) for which Mogul statistics could be retrieved, the number of bonds (or angles) that are observed in the model and the number of bonds (or angles) that are defined in the Chemical Component Dictionary. The Link column lists molecule types, if any, to which the group is linked. The Z score for a bond length (or angle) is the number of standard deviations the observed value is removed from the expected value. A bond length (or angle) with  $|Z| > 2$  is considered an outlier worth inspection. RMSZ is the root-mean-square of all Z scores of the bond lengths (or angles).

Mol	Type	Chain	Res	Link	Bond lengths			Bond angles		
					Counts	RMSZ	$\# Z  > 2$	Counts	RMSZ	$\# Z  > 2$
2	NAG	C	1	1,2	14,14,15	0.32	0	17,19,21	0.43	0
2	NAG	C	2	2	14,14,15	0.41	0	17,19,21	0.37	0
3	NAG	D	1	1,3	14,14,15	0.34	0	17,19,21	0.34	0
3	FUC	D	2	3	10,10,11	0.65	0	14,14,16	0.88	0

Mol	Type	Chain	Res	Link	Bond lengths			Bond angles		
					Counts	RMSZ	# Z  > 2	Counts	RMSZ	# Z  > 2
4	NAG	E	1	1,4	14,14,15	0.50	0	17,19,21	0.62	0
4	NAG	E	2	4	14,14,15	0.25	0	17,19,21	0.73	0
4	MAN	E	3	4	11,11,12	0.99	1 (9%)	15,15,17	1.35	2 (13%)

In the following table, the Chirals column lists the number of chiral outliers, the number of chiral centers analysed, the number of these observed in the model and the number defined in the Chemical Component Dictionary. Similar counts are reported in the Torsion and Rings columns. '-' means no outliers of that kind were identified.

Mol	Type	Chain	Res	Link	Chirals	Torsions	Rings
2	NAG	C	1	1,2	-	0/6/23/26	0/1/1/1
2	NAG	C	2	2	-	4/6/23/26	0/1/1/1
3	NAG	D	1	1,3	-	0/6/23/26	0/1/1/1
3	FUC	D	2	3	-	-	0/1/1/1
4	NAG	E	1	1,4	-	0/6/23/26	0/1/1/1
4	NAG	E	2	4	-	3/6/23/26	0/1/1/1
4	MAN	E	3	4	-	1/2/19/22	1/1/1/1

All (1) bond length outliers are listed below:

Mol	Chain	Res	Type	Atoms	Z	Observed(Å)	Ideal(Å)
4	E	3	MAN	C1-C2	2.55	1.58	1.52

All (2) bond angle outliers are listed below:

Mol	Chain	Res	Type	Atoms	Z	Observed(°)	Ideal(°)
4	E	3	MAN	C1-O5-C5	3.80	117.34	112.19
4	E	3	MAN	O2-C2-C3	-2.39	105.35	110.14

There are no chirality outliers.

All (8) torsion outliers are listed below:

Mol	Chain	Res	Type	Atoms
2	C	2	NAG	O5-C5-C6-O6
2	C	2	NAG	C4-C5-C6-O6
2	C	2	NAG	C8-C7-N2-C2
2	C	2	NAG	O7-C7-N2-C2
4	E	2	NAG	C3-C2-N2-C7
4	E	2	NAG	C1-C2-N2-C7
4	E	3	MAN	O5-C5-C6-O6
4	E	2	NAG	C4-C5-C6-O6

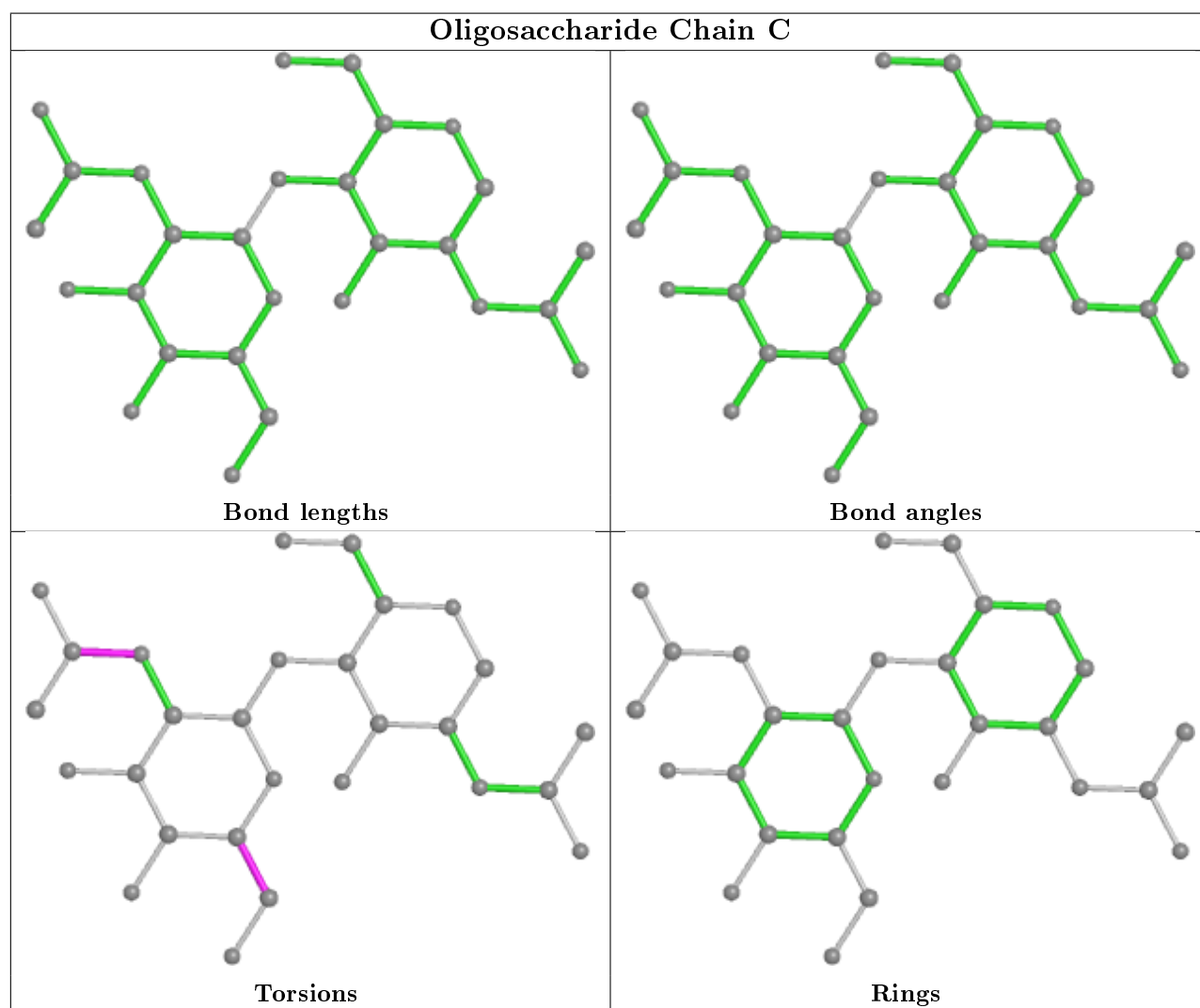
All (1) ring outliers are listed below:

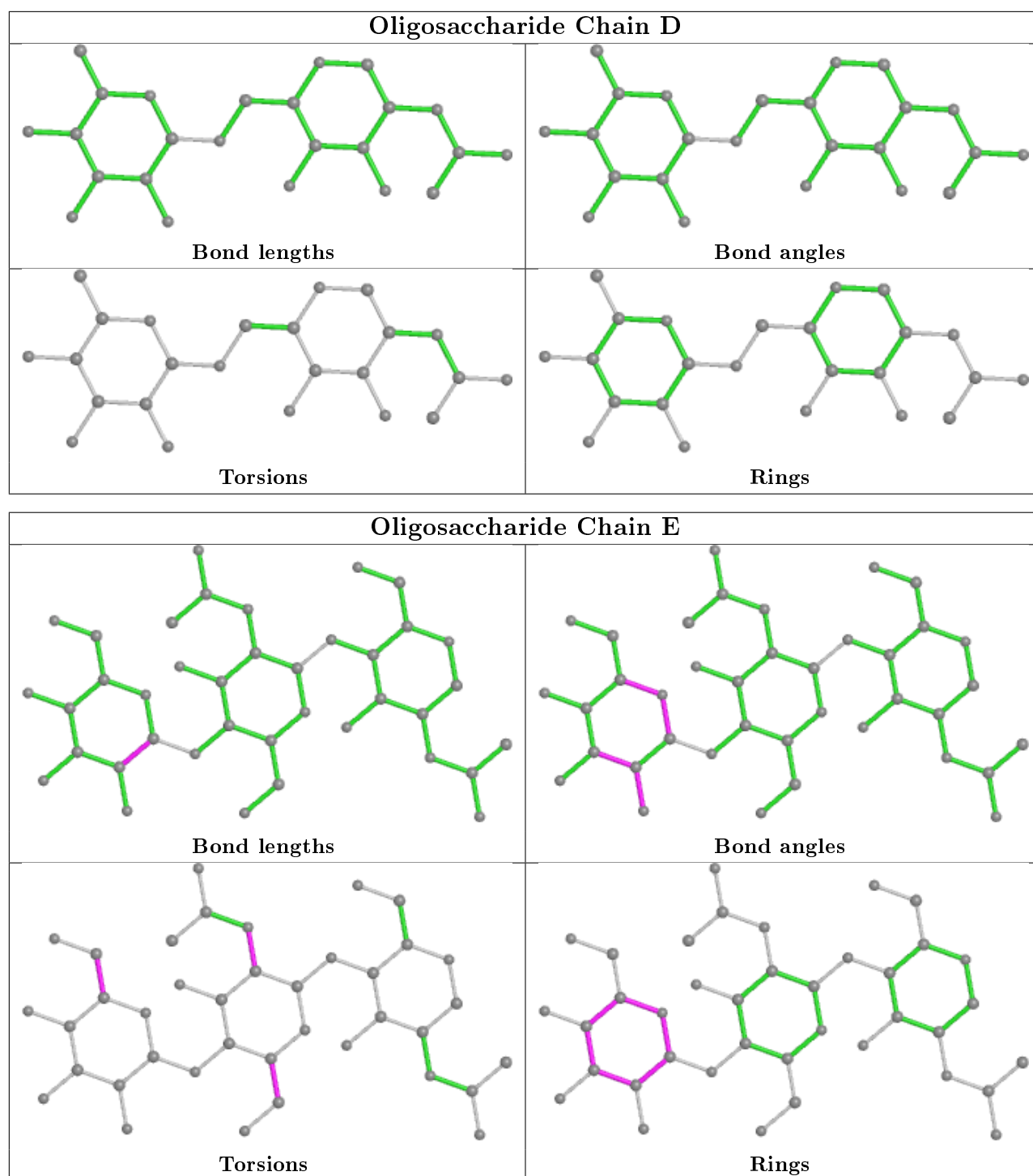
Mol	Chain	Res	Type	Atoms
4	E	3	MAN	C1-C2-C3-C4-C5-O5

2 monomers are involved in 2 short contacts:

Mol	Chain	Res	Type	Clashes	Symm-Clashes
4	E	2	NAG	2	0
4	E	3	MAN	1	0

The following is a two-dimensional graphical depiction of Mogul quality analysis of bond lengths, bond angles, torsion angles, and ring geometry for oligosaccharide.





## 5.6 Ligand geometry [i](#)

37 ligands are modelled in this entry.

In the following table, the Counts columns list the number of bonds (or angles) for which Mogul statistics could be retrieved, the number of bonds (or angles) that are observed in the model and the number of bonds (or angles) that are defined in the Chemical Component Dictionary. The Link column lists molecule types, if any, to which the group is linked. The Z score for a bond

length (or angle) is the number of standard deviations the observed value is removed from the expected value. A bond length (or angle) with  $|Z| > 2$  is considered an outlier worth inspection. RMSZ is the root-mean-square of all Z scores of the bond lengths (or angles).

Mol	Type	Chain	Res	Link	Bond lengths			Bond angles		
					Counts	RMSZ	# Z  > 2	Counts	RMSZ	# Z  > 2
5	EDO	B	607	-	3,3,3	0.49	0	2,2,2	0.28	0
5	EDO	B	606	-	3,3,3	0.46	0	2,2,2	0.40	0
6	SO4	A	617	-	4,4,4	0.14	0	6,6,6	0.04	0
6	SO4	B	613	-	4,4,4	0.15	0	6,6,6	0.07	0
5	EDO	B	609	-	3,3,3	0.46	0	2,2,2	0.31	0
6	SO4	A	618	-	4,4,4	0.14	0	6,6,6	0.05	0
5	EDO	A	605	-	3,3,3	0.46	0	2,2,2	0.39	0
6	SO4	B	615	-	4,4,4	0.14	0	6,6,6	0.06	0
6	SO4	A	619	-	4,4,4	0.14	0	6,6,6	0.10	0
5	EDO	A	613	-	3,3,3	0.46	0	2,2,2	0.33	0
5	EDO	A	607	-	3,3,3	0.46	0	2,2,2	0.39	0
6	SO4	B	619	-	4,4,4	0.13	0	6,6,6	0.05	0
6	SO4	B	618	-	4,4,4	0.14	0	6,6,6	0.06	0
6	SO4	B	616	-	4,4,4	0.13	0	6,6,6	0.06	0
5	EDO	A	611	-	3,3,3	0.46	0	2,2,2	0.37	0
6	SO4	A	614	-	4,4,4	0.14	0	6,6,6	0.11	0
6	SO4	B	617	-	4,4,4	0.14	0	6,6,6	0.06	0
5	EDO	A	606	-	3,3,3	0.42	0	2,2,2	0.46	0
5	EDO	A	610	-	3,3,3	0.45	0	2,2,2	0.42	0
7	P9V	B	623	-	13,13,13	0.90	1 (7%)	14,17,17	1.64	1 (7%)
6	SO4	B	614	-	4,4,4	0.14	0	6,6,6	0.08	0
5	EDO	A	609	-	3,3,3	0.47	0	2,2,2	0.34	0
7	P9V	A	621	-	13,13,13	0.88	0	14,17,17	2.30	5 (35%)
6	SO4	B	620	-	4,4,4	0.13	0	6,6,6	0.07	0
5	EDO	B	608	-	3,3,3	0.48	0	2,2,2	0.30	0
8	NAG	B	604	1	14,14,15	0.28	0	17,19,21	0.43	0
5	EDO	B	610	-	3,3,3	0.45	0	2,2,2	0.45	0
5	EDO	B	611	-	3,3,3	0.46	0	2,2,2	0.37	0
5	EDO	A	608	-	3,3,3	0.45	0	2,2,2	0.37	0
6	SO4	A	620	-	4,4,4	0.13	0	6,6,6	0.06	0
6	SO4	B	622	-	4,4,4	0.13	0	6,6,6	0.07	0
6	SO4	A	615	-	4,4,4	0.14	0	6,6,6	0.08	0
5	EDO	A	612	-	3,3,3	0.47	0	2,2,2	0.30	0
5	EDO	B	612	-	3,3,3	0.44	0	2,2,2	0.52	0
8	NAG	B	605	1	14,14,15	0.67	0	17,19,21	1.47	2 (11%)
6	SO4	A	616	-	4,4,4	0.14	0	6,6,6	0.05	0
6	SO4	B	621	-	4,4,4	0.13	0	6,6,6	0.06	0

In the following table, the Chirals column lists the number of chiral outliers, the number of chiral centers analysed, the number of these observed in the model and the number defined in the Chemical Component Dictionary. Similar counts are reported in the Torsion and Rings columns. '-' means no outliers of that kind were identified.

Mol	Type	Chain	Res	Link	Chirals	Torsions	Rings
5	EDO	B	608	-	-	1/1/1/1	-
5	EDO	A	611	-	-	1/1/1/1	-
5	EDO	B	607	-	-	0/1/1/1	-
8	NAG	B	604	1	-	2/6/23/26	0/1/1/1
5	EDO	B	606	-	-	0/1/1/1	-
5	EDO	A	606	-	-	1/1/1/1	-
5	EDO	B	610	-	-	1/1/1/1	-
5	EDO	A	610	-	-	0/1/1/1	-
7	P9V	B	623	-	-	0/4/21/21	0/1/1/1
5	EDO	A	608	-	-	1/1/1/1	-
5	EDO	A	609	-	-	0/1/1/1	-
5	EDO	A	613	-	-	0/1/1/1	-
5	EDO	A	607	-	-	1/1/1/1	-
5	EDO	B	609	-	-	0/1/1/1	-
5	EDO	A	612	-	-	0/1/1/1	-
5	EDO	B	612	-	-	1/1/1/1	-
8	NAG	B	605	1	-	2/6/23/26	0/1/1/1
5	EDO	B	611	-	-	1/1/1/1	-
7	P9V	A	621	-	-	2/4/21/21	0/1/1/1
5	EDO	A	605	-	-	0/1/1/1	-

All (1) bond length outliers are listed below:

Mol	Chain	Res	Type	Atoms	Z	Observed(Å)	Ideal(Å)
7	B	623	P9V	C4-C3	2.28	1.57	1.52

All (8) bond angle outliers are listed below:

Mol	Chain	Res	Type	Atoms	Z	Observed(°)	Ideal(°)
7	A	621	P9V	C5-C4-C3	-6.04	102.17	111.02
7	B	623	P9V	C5-C4-C3	-4.28	104.74	111.02
8	B	605	NAG	C2-N2-C7	3.59	128.01	122.90
7	A	621	P9V	C17-C16-C3	3.15	121.68	112.98
7	A	621	P9V	C4-C3-N2	2.76	114.66	109.14
8	B	605	NAG	O5-C5-C6	2.57	111.23	107.20
7	A	621	P9V	C1-S18-C17	2.19	107.92	100.40
7	A	621	P9V	C7-N2-C3	-2.15	104.97	109.61

There are no chirality outliers.

All (14) torsion outliers are listed below:

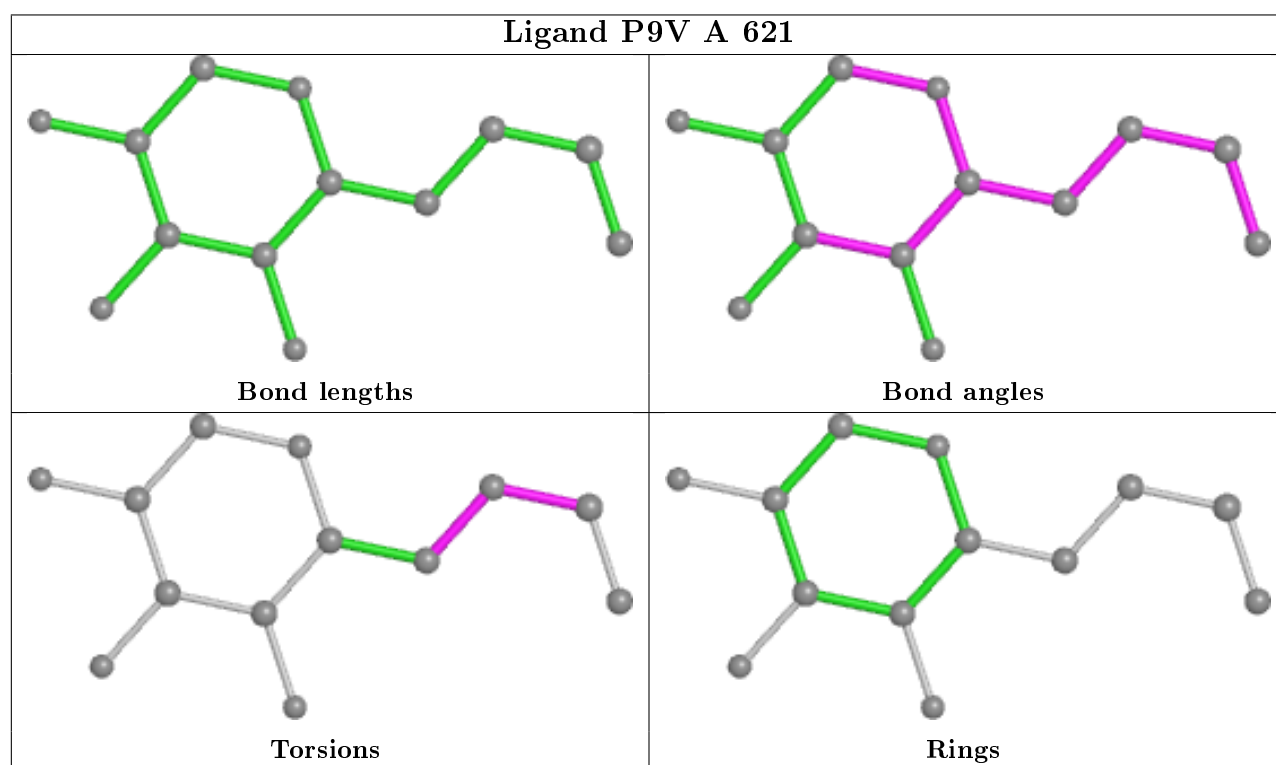
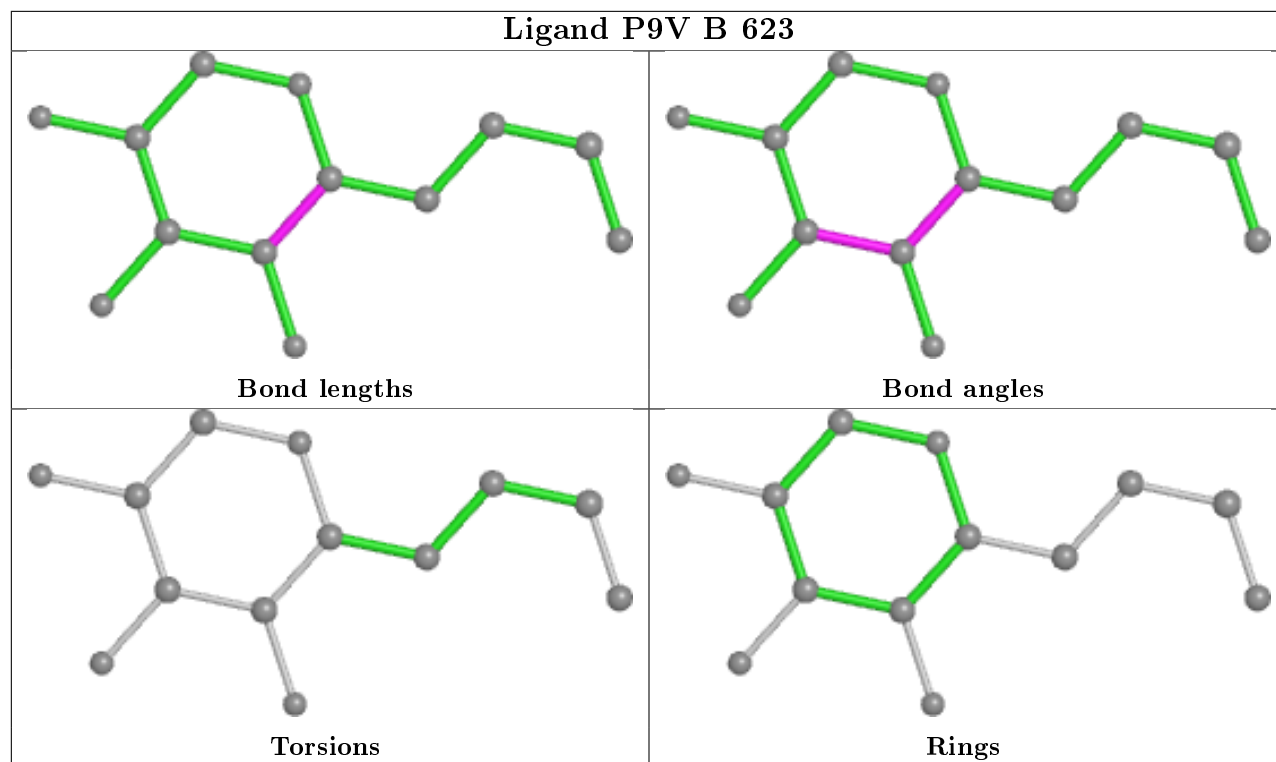
Mol	Chain	Res	Type	Atoms
8	B	604	NAG	C8-C7-N2-C2
8	B	604	NAG	O7-C7-N2-C2
8	B	605	NAG	C8-C7-N2-C2
8	B	605	NAG	O7-C7-N2-C2
7	A	621	P9V	C16-C17-S18-C1
5	A	606	EDO	O1-C1-C2-O2
5	B	608	EDO	O1-C1-C2-O2
5	B	612	EDO	O1-C1-C2-O2
5	B	610	EDO	O1-C1-C2-O2
7	A	621	P9V	C3-C16-C17-S18
5	A	611	EDO	O1-C1-C2-O2
5	B	611	EDO	O1-C1-C2-O2
5	A	607	EDO	O1-C1-C2-O2
5	A	608	EDO	O1-C1-C2-O2

There are no ring outliers.

8 monomers are involved in 9 short contacts:

Mol	Chain	Res	Type	Clashes	Symm-Clashes
6	B	613	SO4	1	0
5	B	609	EDO	1	0
6	A	614	SO4	1	0
5	A	606	EDO	1	0
7	B	623	P9V	1	0
7	A	621	P9V	2	0
5	A	608	EDO	1	0
6	A	620	SO4	1	0

The following is a two-dimensional graphical depiction of Mogul quality analysis of bond lengths, bond angles, torsion angles, and ring geometry for all instances of the Ligand of Interest. In addition, ligands with molecular weight > 250 and outliers as shown on the validation Tables will also be included. For torsion angles, if less than 5% of the Mogul distribution of torsion angles is within 10 degrees of the torsion angle in question, then that torsion angle is considered an outlier. Any bond that is central to one or more torsion angles identified as an outlier by Mogul will be highlighted in the graph. For rings, the root-mean-square deviation (RMSD) between the ring in question and similar rings identified by Mogul is calculated over all ring torsion angles. If the average RMSD is greater than 60 degrees and the minimal RMSD between the ring in question and any Mogul-identified rings is also greater than 60 degrees, then that ring is considered an outlier. The outliers are highlighted in purple. The color gray indicates Mogul did not find sufficient equivalents in the CSD to analyse the geometry.



## 5.7 Other polymers [\(i\)](#)

There are no such residues in this entry.



## 5.8 Polymer linkage issues

There are no chain breaks in this entry.

## 6 Fit of model and data

### 6.1 Protein, DNA and RNA chains

In the following table, the column labelled ‘#RSRZ> 2’ contains the number (and percentage) of RSRZ outliers, followed by percent RSRZ outliers for the chain as percentile scores relative to all X-ray entries and entries of similar resolution. The OWAB column contains the minimum, median, 95<sup>th</sup> percentile and maximum values of the occupancy-weighted average B-factor per residue. The column labelled ‘Q< 0.9’ lists the number of (and percentage) of residues with an average occupancy less than 0.9.

Mol	Chain	Analysed	<RSRZ>	#RSRZ>2	OWAB(Å <sup>2</sup> )	Q<0.9
1	A	489/497 (98%)	-0.08	8 (1%) 72 74	25, 36, 56, 86	0
1	B	494/497 (99%)	0.01	16 (3%) 47 52	26, 36, 56, 92	0
All	All	983/994 (98%)	-0.03	24 (2%) 59 62	25, 36, 56, 92	0

All (24) RSRZ outliers are listed below:

Mol	Chain	Res	Type	RSRZ
1	B	316	PHE	7.8
1	B	317	LEU	6.1
1	A	313	TYR	5.0
1	A	348	TRP	4.7
1	B	318	ALA	4.0
1	B	63	THR	3.8
1	B	348	TRP	3.4
1	B	313	TYR	3.3
1	B	62	GLY	3.3
1	B	314	LEU	3.1
1	B	61	THR	2.8
1	A	177	SER	2.8
1	A	31	PHE	2.7
1	B	497	GLN	2.6
1	A	200	GLN	2.5
1	B	31	PHE	2.5
1	B	468	VAL	2.4
1	A	178	PRO	2.4
1	B	30	THR	2.3
1	B	381	TRP	2.1
1	B	177	SER	2.1
1	A	349	GLU	2.1
1	A	204	ILE	2.1
1	B	231	THR	2.0

## 6.2 Non-standard residues in protein, DNA, RNA chains [i](#)

There are no non-standard protein/DNA/RNA residues in this entry.

## 6.3 Carbohydrates [i](#)

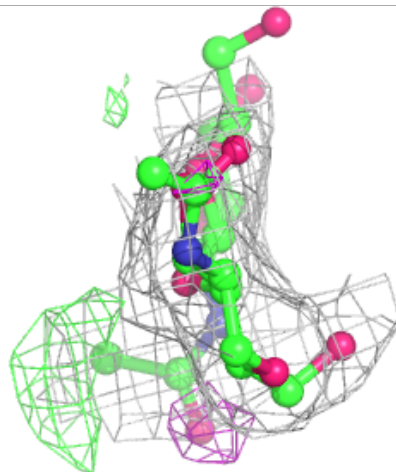
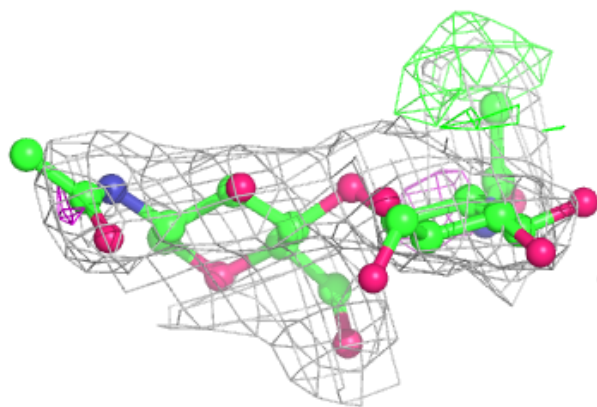
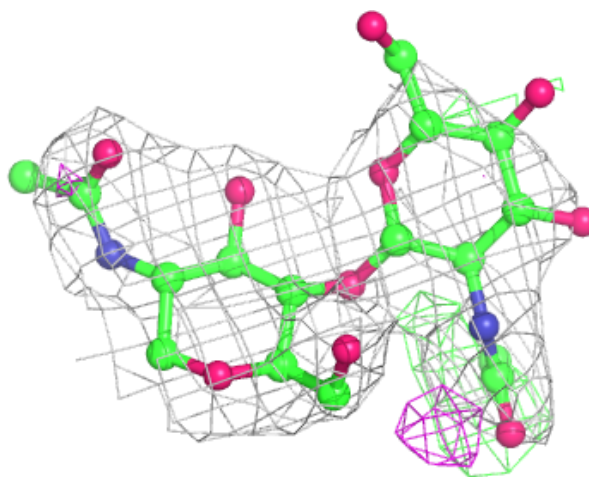
In the following table, the Atoms column lists the number of modelled atoms in the group and the number defined in the chemical component dictionary. The B-factors column lists the minimum, median, 95<sup>th</sup> percentile and maximum values of B factors of atoms in the group. The column labelled 'Q< 0.9' lists the number of atoms with occupancy less than 0.9.

Mol	Type	Chain	Res	Atoms	RSCC	RSR	B-factors(Å <sup>2</sup> )	Q<0.9
2	NAG	C	2	14/15	0.74	0.47	49,68,81,85	0
4	MAN	E	3	11/12	0.79	0.35	75,86,94,95	0
3	NAG	D	1	14/15	0.89	0.30	47,58,66,69	0
4	NAG	E	2	14/15	0.89	0.40	45,70,81,92	0
2	NAG	C	1	14/15	0.91	0.25	39,45,57,62	0
3	FUC	D	2	10/11	0.92	0.37	58,67,74,76	0
4	NAG	E	1	14/15	0.95	0.28	35,44,55,66	0

The following is a graphical depiction of the model fit to experimental electron density for oligosaccharide. Each fit is shown from different orientation to approximate a three-dimensional view.

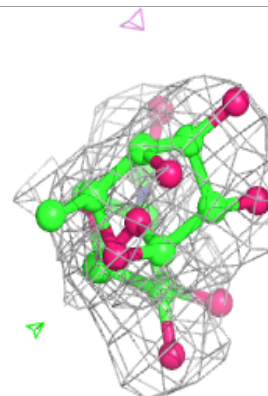
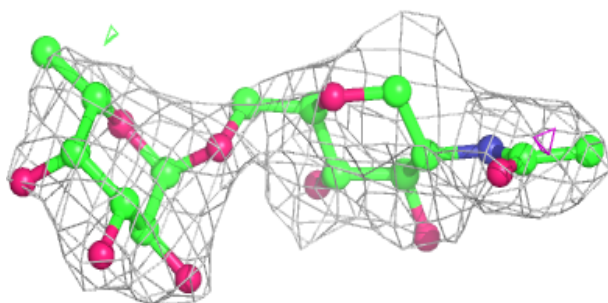
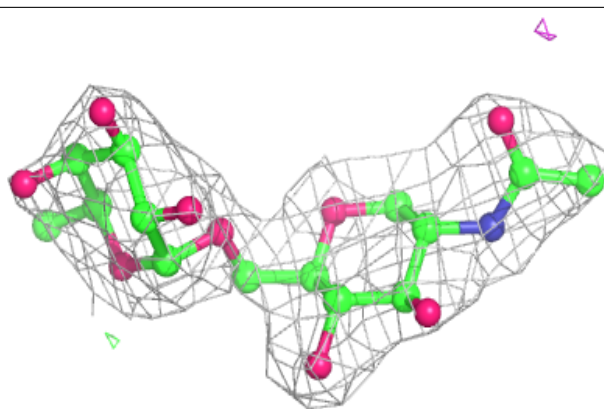
**Electron density around Chain C:**

$2mF_o-DF_c$  (at 0.7 rmsd) in gray  
 $mF_o-DF_c$  (at 3 rmsd) in purple (negative)  
and green (positive)

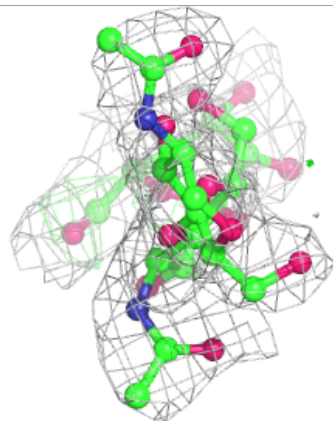
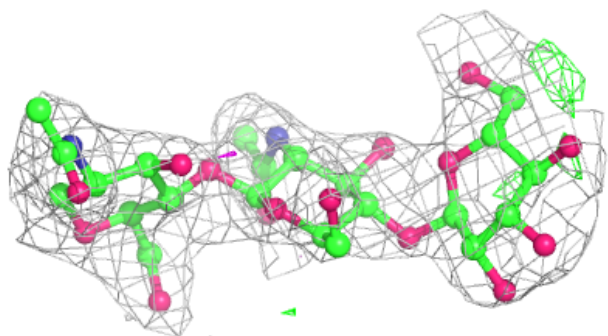
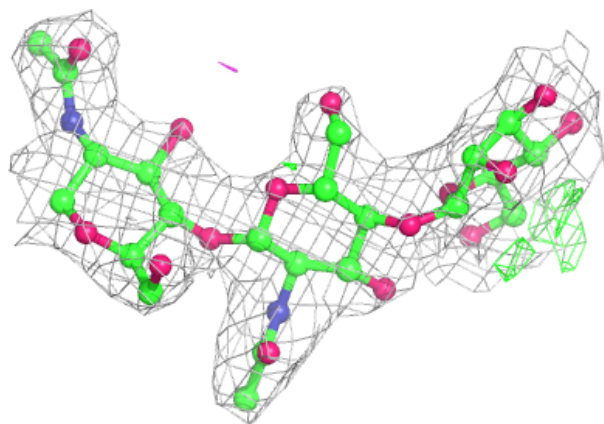


**Electron density around Chain D:**

$2mF_o-DF_c$  (at 0.7 rmsd) in gray  
 $mF_o-DF_c$  (at 3 rmsd) in purple (negative)  
and green (positive)

**Electron density around Chain E:**

$2mF_o-DF_c$  (at 0.7 rmsd) in gray  
 $mF_o-DF_c$  (at 3 rmsd) in purple (negative)  
and green (positive)

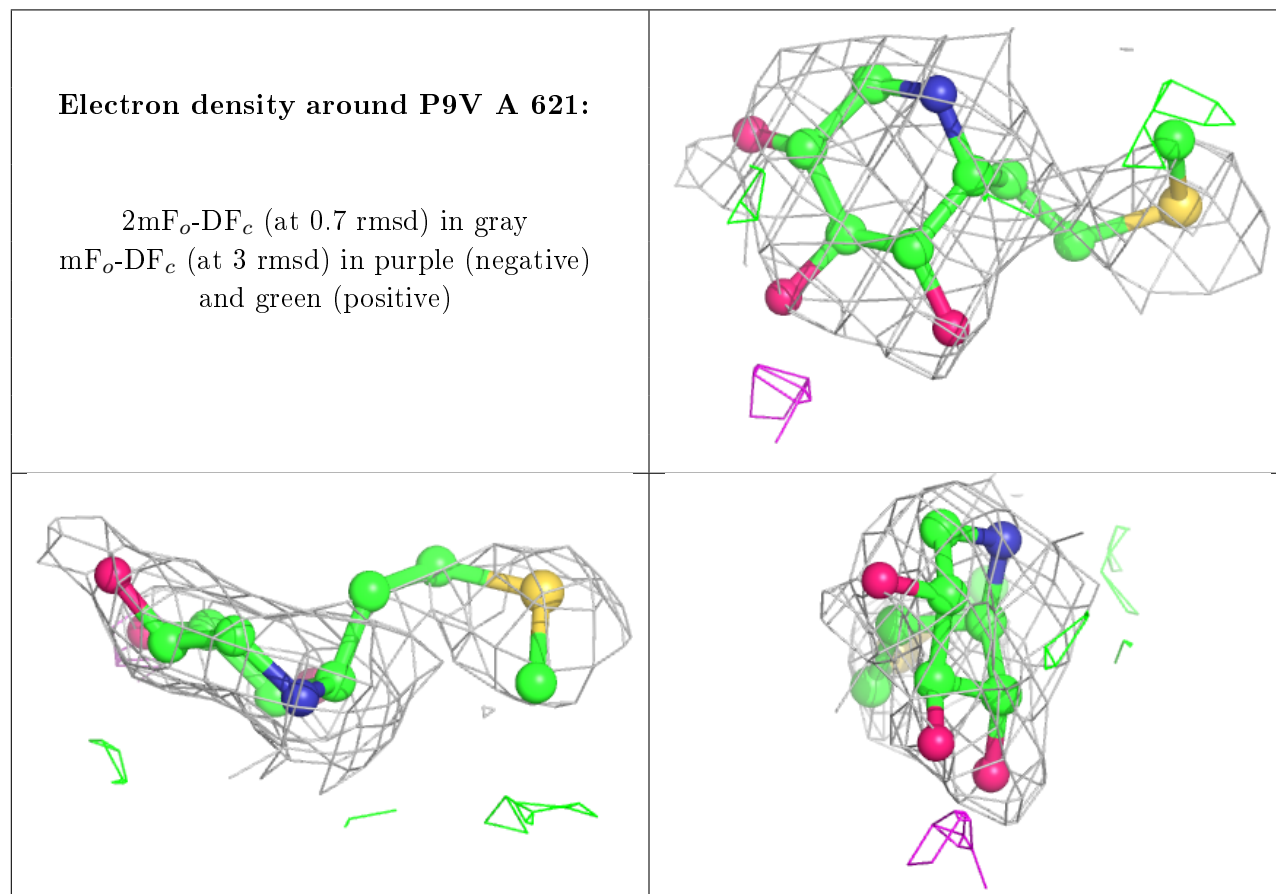


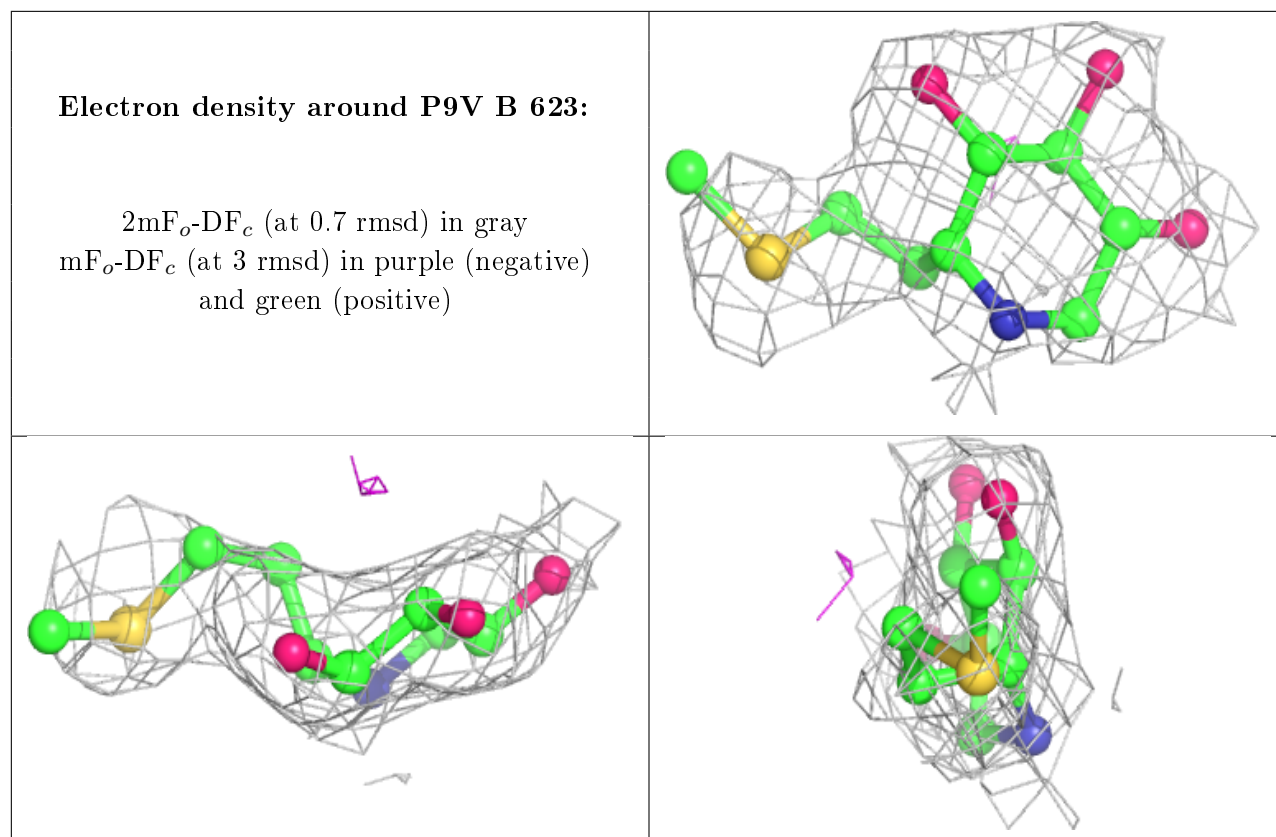
## 6.4 Ligands [i](#)

In the following table, the Atoms column lists the number of modelled atoms in the group and the number defined in the chemical component dictionary. The B-factors column lists the minimum, median, 95<sup>th</sup> percentile and maximum values of B factors of atoms in the group. The column labelled 'Q< 0.9' lists the number of atoms with occupancy less than 0.9.

Mol	Type	Chain	Res	Atoms	RSCC	RSR	B-factors(Å <sup>2</sup> )	Q<0.9
5	EDO	A	609	4/4	0.64	0.40	56,71,72,80	0
6	SO4	A	620	5/5	0.70	0.30	85,96,102,117	0
5	EDO	B	608	4/4	0.82	0.18	47,52,53,56	0
5	EDO	B	611	4/4	0.84	0.21	32,43,46,55	0
8	NAG	B	605	14/15	0.84	0.27	62,76,93,94	0
5	EDO	B	612	4/4	0.85	0.18	46,52,54,56	0
6	SO4	B	622	5/5	0.86	0.31	71,82,87,100	0
5	EDO	A	607	4/4	0.87	0.21	47,49,55,57	0
7	P9V	A	621	13/13	0.89	0.29	48,53,65,85	0
8	NAG	B	604	14/15	0.89	0.39	38,60,69,75	0
7	P9V	B	623	13/13	0.89	0.20	39,49,68,69	0
5	EDO	B	607	4/4	0.90	0.39	41,46,47,49	0
5	EDO	A	613	4/4	0.90	0.15	44,46,48,53	0
5	EDO	A	608	4/4	0.90	0.15	51,53,60,63	0
6	SO4	A	616	5/5	0.90	0.28	69,70,92,92	0
5	EDO	A	605	4/4	0.91	0.13	47,55,57,62	0
5	EDO	A	610	4/4	0.92	0.17	32,35,39,43	0
5	EDO	B	609	4/4	0.93	0.17	48,48,50,53	0
6	SO4	B	620	5/5	0.93	0.17	56,67,73,81	0
5	EDO	B	610	4/4	0.93	0.10	49,52,55,58	0
6	SO4	B	617	5/5	0.94	0.37	62,65,89,90	0
5	EDO	A	611	4/4	0.94	0.08	41,44,47,55	0
6	SO4	A	619	5/5	0.94	0.30	56,60,78,81	0
6	SO4	B	621	5/5	0.94	0.40	62,69,91,92	0
5	EDO	A	606	4/4	0.95	0.11	29,37,47,49	0
5	EDO	A	612	4/4	0.95	0.12	40,43,43,43	0
5	EDO	B	606	4/4	0.95	0.14	39,42,43,54	0
6	SO4	A	618	5/5	0.95	0.27	66,70,85,93	0
6	SO4	B	618	5/5	0.95	0.34	62,63,76,87	0
6	SO4	B	616	5/5	0.96	0.16	50,58,74,78	0
6	SO4	A	617	5/5	0.96	0.18	49,50,69,71	0
6	SO4	B	615	5/5	0.96	0.16	52,63,68,68	0
6	SO4	B	619	5/5	0.97	0.24	62,71,79,92	0
6	SO4	A	614	5/5	0.98	0.11	37,37,39,48	0
6	SO4	B	614	5/5	0.98	0.10	43,43,45,47	0
6	SO4	B	613	5/5	0.99	0.07	41,44,49,53	0
6	SO4	A	615	5/5	0.99	0.08	43,44,47,50	0

The following is a graphical depiction of the model fit to experimental electron density of all instances of the Ligand of Interest. In addition, ligands with molecular weight > 250 and outliers as shown on the geometry validation Tables will also be included. Each fit is shown from different orientation to approximate a three-dimensional view.





## 6.5 Other polymers [i](#)

There are no such residues in this entry.