



# Full wwPDB X-ray Structure Validation Report ⓘ

Jun 13, 2024 – 09:48 AM EDT

PDB ID : 1Q47  
Title : Structure of the Semaphorin 3A Receptor-Binding Module  
Authors : Antipenko, A.; Himanen, J.-P.; van Leyen, K.; Nardi-Dei, V.; Lesniak, J.; Barton, W.A.; Rajashankar, K.R.; Lu, M.; Hoemme, C.; Puschel, A.; Nikolov, D.  
Deposited on : 2003-08-01  
Resolution : 2.80 Å(reported)

This is a Full wwPDB X-ray Structure Validation Report for a publicly released PDB entry.

We welcome your comments at [validation@mail.wwpdb.org](mailto:validation@mail.wwpdb.org)

A user guide is available at

<https://www.wwpdb.org/validation/2017/XrayValidationReportHelp>

with specific help available everywhere you see the ⓘ symbol.

The types of validation reports are described at

<http://www.wwpdb.org/validation/2017/FAQs#types>.

---

The following versions of software and data (see [references ⓘ](#)) were used in the production of this report:

MolProbity : 4.02b-467  
Mogul : 1.8.5 (274361), CSD as541be (2020)  
Xtrriage (Phenix) : **NOT EXECUTED**  
EDS : **NOT EXECUTED**  
Percentile statistics : 20191225.v01 (using entries in the PDB archive December 25th 2019)  
Ideal geometry (proteins) : Engh & Huber (2001)  
Ideal geometry (DNA, RNA) : Parkinson et al. (1996)  
Validation Pipeline (wwPDB-VP) : 2.36.2

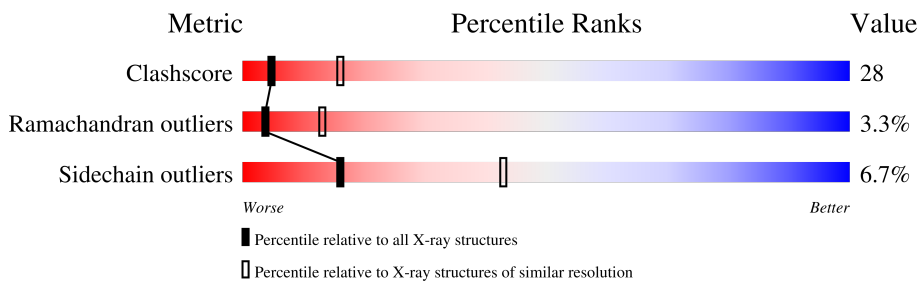
# 1 Overall quality at a glance

The following experimental techniques were used to determine the structure:

*X-RAY DIFFRACTION*

The reported resolution of this entry is 2.80 Å.

Percentile scores (ranging between 0-100) for global validation metrics of the entry are shown in the following graphic. The table shows the number of entries on which the scores are based.



Metric	Whole archive (#Entries)	Similar resolution (#Entries, resolution range(Å))
Clashscore	141614	3569 (2.80-2.80)
Ramachandran outliers	138981	3498 (2.80-2.80)
Sidechain outliers	138945	3500 (2.80-2.80)

The table below summarises the geometric issues observed across the polymeric chains and their fit to the electron density. The red, orange, yellow and green segments of the lower bar indicate the fraction of residues that contain outliers for  $\geq 3$ , 2, 1 and 0 types of geometric quality criteria respectively. A grey segment represents the fraction of residues that are not modelled. The numeric value for each fraction is indicated below the corresponding segment, with a dot representing fractions  $\leq 5\%$ .

Note EDS was not executed.

Mol	Chain	Length	Quality of chain
1	A	495	
1	B	495	

## 2 Entry composition [i](#)

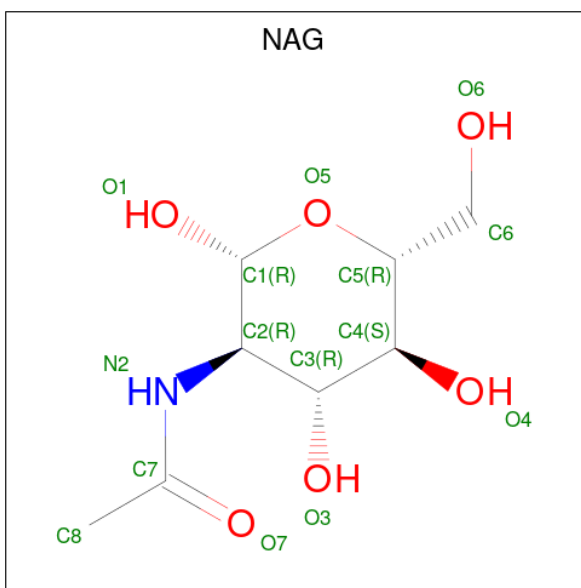
There are 2 unique types of molecules in this entry. The entry contains 7923 atoms, of which 0 are hydrogens and 0 are deuteriums.

In the tables below, the ZeroOcc column contains the number of atoms modelled with zero occupancy, the AltConf column contains the number of residues with at least one atom in alternate conformation and the Trace column contains the number of residues modelled with at most 2 atoms.

- Molecule 1 is a protein called Semaphorin 3A.

Mol	Chain	Residues	Atoms					ZeroOcc	AltConf	Trace
			Total	C	N	O	S			
1	A	484	Total 3883	C 2474	N 669	O 721	S 19	0	0	0
1	B	495	Total 3980	C 2536	N 684	O 741	S 19	0	0	0

- Molecule 2 is 2-acetamido-2-deoxy-beta-D-glucopyranose (three-letter code: NAG) (formula:  $C_8H_{15}NO_6$ ).



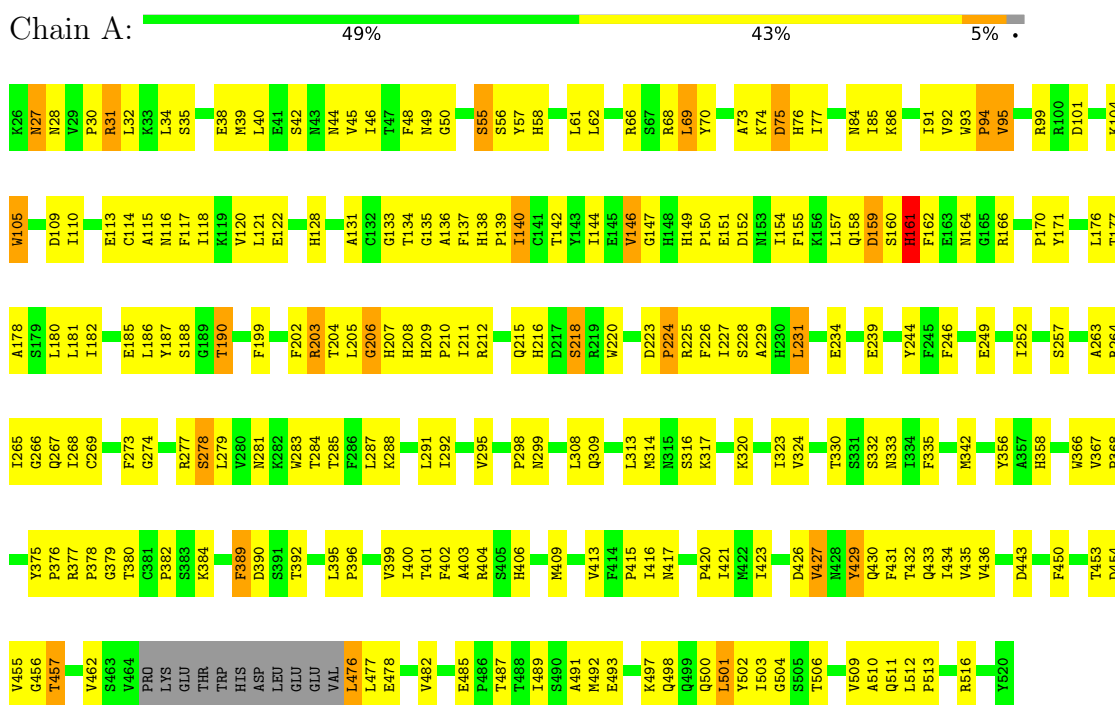
Mol	Chain	Residues	Atoms				ZeroOcc	AltConf
			Total	C	N	O		
2	A	1	Total 15	C 8	N 1	O 6	0	0
2	A	1	Total 15	C 8	N 1	O 6	0	0
2	B	1	Total 15	C 8	N 1	O 6	0	0
2	B	1	Total 15	C 8	N 1	O 6	0	0

### 3 Residue-property plots

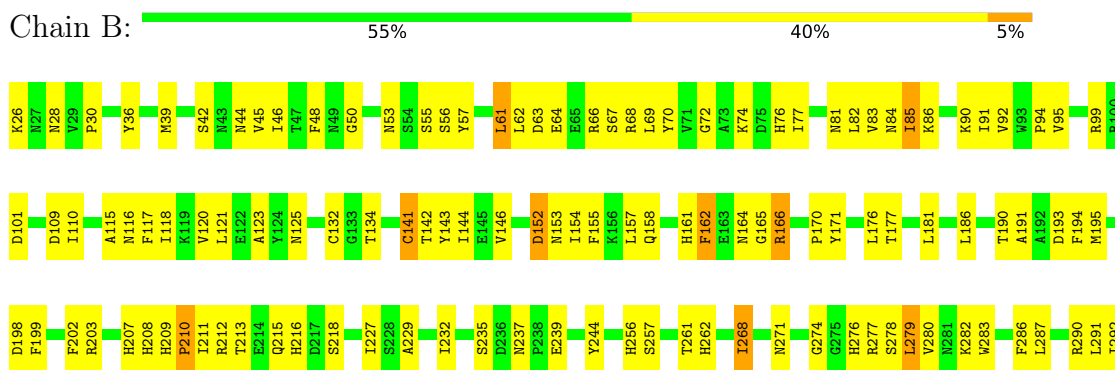
These plots are drawn for all protein, RNA, DNA and oligosaccharide chains in the entry. The first graphic for a chain summarises the proportions of the various outlier classes displayed in the second graphic. The second graphic shows the sequence view annotated by issues in geometry. Residues are color-coded according to the number of geometric quality criteria for which they contain at least one outlier: green = 0, yellow = 1, orange = 2 and red = 3 or more. Stretches of 2 or more consecutive residues without any outlier are shown as a green connector. Residues present in the sample, but not in the model, are shown in grey.

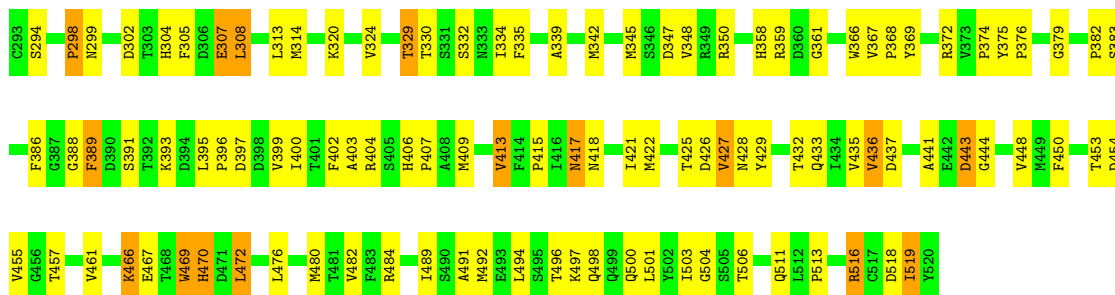
Note EDS was not executed.

- Molecule 1: Semaphorin 3A



- Molecule 1: Semaphorin 3A





## 4 Data and refinement statistics

Xtrriage (Phenix) and EDS were not executed - this section is therefore incomplete.

Property	Value	Source
Space group	C 1 2 1	Depositor
Cell constants a, b, c, $\alpha$ , $\beta$ , $\gamma$	218.79Å 59.73Å 122.72Å 90.00° 109.01° 90.00°	Depositor
Resolution (Å)	20.00 – 2.80	Depositor
% Data completeness (in resolution range)	(Not available) (20.00-2.80)	Depositor
$R_{merge}$	(Not available)	Depositor
$R_{sym}$	(Not available)	Depositor
Refinement program	CNS 1.0	Depositor
R, $R_{free}$	0.249 , 0.294	Depositor
Estimated twinning fraction	No twinning to report.	Xtrriage
Total number of atoms	7923	wwPDB-VP
Average B, all atoms (Å <sup>2</sup> )	45.0	wwPDB-VP

## 5 Model quality [i](#)

### 5.1 Standard geometry [i](#)

Bond lengths and bond angles in the following residue types are not validated in this section: NAG

The Z score for a bond length (or angle) is the number of standard deviations the observed value is removed from the expected value. A bond length (or angle) with  $|Z| > 5$  is considered an outlier worth inspection. RMSZ is the root-mean-square of all Z scores of the bond lengths (or angles).

Mol	Chain	Bond lengths		Bond angles	
		RMSZ	# Z  >5	RMSZ	# Z  >5
1	A	0.53	0/3989	0.72	0/5411
1	B	0.48	0/4091	0.65	0/5553
All	All	0.50	0/8080	0.69	0/10964

Chiral center outliers are detected by calculating the chiral volume of a chiral center and verifying if the center is modelled as a planar moiety or with the opposite hand. A planarity outlier is detected by checking planarity of atoms in a peptide group, atoms in a mainchain group or atoms of a sidechain that are expected to be planar.

Mol	Chain	#Chirality outliers	#Planarity outliers
1	A	0	2
1	B	0	1
All	All	0	3

There are no bond length outliers.

There are no bond angle outliers.

There are no chirality outliers.

All (3) planarity outliers are listed below:

Mol	Chain	Res	Type	Group
1	A	429	TYR	Sidechain
1	A	57	TYR	Sidechain
1	B	375	TYR	Sidechain

### 5.2 Too-close contacts [i](#)

In the following table, the Non-H and H(model) columns list the number of non-hydrogen atoms and hydrogen atoms in the chain respectively. The H(added) column lists the number of hydrogen atoms added and optimized by MolProbity. The Clashes column lists the number of clashes within

the asymmetric unit, whereas Symm-Clashes lists symmetry-related clashes.

Mol	Chain	Non-H	H(model)	H(added)	Clashes	Symm-Clashes
1	A	3883	0	3745	226	0
1	B	3980	0	3835	213	0
2	A	30	0	27	3	0
2	B	30	0	27	4	0
All	All	7923	0	7634	434	0

The all-atom clashscore is defined as the number of clashes found per 1000 atoms (including hydrogen atoms). The all-atom clashscore for this structure is 28.

All (434) close contacts within the same asymmetric unit are listed below, sorted by their clash magnitude.

Atom-1	Atom-2	Interatomic distance (Å)	Clash overlap (Å)
1:B:279:LEU:HD21	1:B:404:ARG:HD3	1.41	1.02
1:A:287:LEU:HD22	1:A:409:MET:CE	1.91	0.99
1:A:273:PHE:H	1:A:392:THR:HG21	1.24	0.99
1:B:53:ASN:ND2	2:B:600:NAG:O7	2.01	0.93
1:A:287:LEU:HD22	1:A:409:MET:HE1	1.55	0.88
1:B:190:THR:HG22	1:B:191:ALA:H	1.36	0.88
1:B:116:ASN:HA	1:B:134:THR:O	1.77	0.84
1:A:128:HIS:HB2	2:A:601:NAG:H82	1.59	0.83
1:B:427:VAL:HG13	1:B:429:TYR:H	1.43	0.83
1:A:32:LEU:HD22	1:A:34:LEU:HD21	1.61	0.82
1:A:94:PRO:O	1:A:95:VAL:HB	1.77	0.81
1:B:367:VAL:HG22	1:B:368:PRO:HD2	1.63	0.80
1:A:44:ASN:OD1	1:A:516:ARG:HG3	1.81	0.80
1:A:489:ILE:HG23	1:A:503:ILE:HG23	1.64	0.80
1:B:92:VAL:HG12	1:B:94:PRO:HD3	1.66	0.78
1:A:273:PHE:N	1:A:392:THR:HG21	1.99	0.78
1:B:278:SER:HB3	1:B:400:ILE:HG21	1.66	0.78
1:A:269:CYS:SG	1:A:285:THR:HG21	2.23	0.78
1:A:152:ASP:HB2	1:A:154:ILE:HD11	1.65	0.77
1:B:237:ASN:HD21	1:B:239:GLU:HB3	1.47	0.77
1:B:237:ASN:ND2	1:B:239:GLU:HB3	1.99	0.77
1:B:453:THR:HG22	1:B:455:VAL:H	1.47	0.77
1:A:215:GLN:HE21	1:A:216:HIS:CD2	2.03	0.77
1:B:395:LEU:HD22	1:B:399:VAL:HG21	1.65	0.77
1:A:285:THR:HG22	1:A:285:THR:O	1.84	0.77
1:B:516:ARG:NE	1:B:519:ILE:HG13	1.99	0.76
1:B:287:LEU:HD22	1:B:409:MET:HE1	1.68	0.76
1:A:453:THR:HG21	1:A:455:VAL:HG12	1.66	0.76

*Continued on next page...*



*Continued from previous page...*

Atom-1	Atom-2	Interatomic distance (Å)	Clash overlap (Å)
1:A:287:LEU:HB3	1:A:409:MET:HE3	1.68	0.75
1:A:453:THR:CG2	1:A:455:VAL:HG12	2.17	0.75
1:A:402:PHE:O	1:A:403:ALA:HB3	1.86	0.74
1:B:203:ARG:HE	1:B:211:ILE:HD13	1.53	0.73
1:B:367:VAL:CG2	1:B:368:PRO:HD2	2.19	0.73
1:A:501:LEU:HD22	1:A:503:ILE:CD1	2.19	0.73
1:A:170:PRO:HD3	1:A:190:THR:HG21	1.71	0.72
1:A:273:PHE:H	1:A:392:THR:CG2	2.01	0.72
1:A:453:THR:HG22	1:A:455:VAL:H	1.54	0.72
1:A:186:LEU:HB2	1:A:205:LEU:HD22	1.71	0.72
1:B:90:LYS:HE3	2:B:600:NAG:H5	1.72	0.71
1:B:469:TRP:O	1:B:470:HIS:HB2	1.88	0.71
1:A:498:GLN:O	1:A:500:GLN:HG2	1.90	0.71
1:B:82:LEU:HD13	1:B:498:GLN:HG3	1.71	0.71
1:B:342:MET:SD	1:B:421:ILE:HD13	2.31	0.70
1:B:345:MET:HA	1:B:348:VAL:HG22	1.73	0.70
1:A:295:VAL:HG11	1:B:334:ILE:HD11	1.74	0.69
1:A:116:ASN:HA	1:A:134:THR:O	1.91	0.69
1:B:209:HIS:HD2	1:B:210:PRO:HD2	1.56	0.69
1:B:68:ARG:HE	1:B:81:ASN:HA	1.57	0.69
1:A:330:THR:HG22	1:A:332:SER:H	1.57	0.69
1:B:433:GLN:NE2	1:B:491:ALA:HA	2.07	0.69
1:A:226:PHE:O	1:A:227:ILE:HD12	1.93	0.68
1:B:203:ARG:NE	1:B:211:ILE:HD13	2.08	0.68
1:A:30:PRO:HG3	1:A:476:LEU:HD13	1.76	0.68
1:A:420:PRO:HG3	1:A:423:ILE:HD11	1.76	0.68
1:A:274:GLY:O	1:A:392:THR:HG23	1.94	0.67
1:A:433:GLN:HB2	1:A:492:MET:HE3	1.76	0.67
1:B:235:SER:HA	1:B:320:LYS:HD3	1.76	0.67
1:B:404:ARG:HH11	1:B:404:ARG:HG2	1.58	0.67
1:A:516:ARG:HA	1:A:516:ARG:NE	2.10	0.67
1:B:276:HIS:HB2	1:B:393:LYS:O	1.95	0.67
1:B:406:HIS:N	1:B:407:PRO:HD3	2.10	0.66
1:A:502:TYR:C	1:A:503:ILE:HD12	2.16	0.66
1:A:95:VAL:HG23	1:A:116:ASN:HB2	1.78	0.66
1:B:432:THR:O	1:B:433:GLN:HG2	1.96	0.66
1:A:180:LEU:HD11	1:A:182:ILE:HD13	1.78	0.65
1:B:164:ASN:HD21	1:B:166:ARG:HB2	1.62	0.65
1:B:190:THR:HG22	1:B:191:ALA:N	2.10	0.65
1:A:56:SER:HA	1:A:506:THR:HG22	1.77	0.64
1:B:330:THR:HG22	1:B:332:SER:H	1.60	0.64

*Continued on next page...*

*Continued from previous page...*

Atom-1	Atom-2	Interatomic distance (Å)	Clash overlap (Å)
1:A:317:LYS:HA	1:A:317:LYS:HE2	1.79	0.64
1:B:125:ASN:HB3	2:B:601:NAG:HN2	1.61	0.64
1:B:134:THR:HG22	1:B:170:PRO:O	1.96	0.64
1:A:404:ARG:HG2	1:A:404:ARG:HH11	1.62	0.64
1:A:48:PHE:CE2	1:A:50:GLY:HA2	2.33	0.64
1:B:404:ARG:HG2	1:B:404:ARG:NH1	2.13	0.63
1:A:85:ILE:HG12	1:A:511:GLN:HE21	1.63	0.63
1:A:287:LEU:HD22	1:A:409:MET:HE2	1.79	0.63
1:B:227:ILE:HG13	1:B:308:LEU:CD1	2.29	0.63
1:A:203:ARG:NH2	1:A:273:PHE:CE2	2.65	0.63
1:A:218:SER:HB2	1:A:252:ILE:HD11	1.80	0.63
1:A:249:GLU:OE2	1:A:264:ARG:CD	2.47	0.62
1:B:152:ASP:O	1:B:154:ILE:HG13	1.99	0.62
1:A:396:PRO:HG2	1:A:399:VAL:HG12	1.81	0.62
1:A:85:ILE:H	1:A:511:GLN:HE22	1.45	0.62
1:A:209:HIS:HD2	1:A:210:PRO:O	1.82	0.62
1:A:164:ASN:HD22	1:A:166:ARG:H	1.47	0.62
1:A:85:ILE:H	1:A:511:GLN:NE2	1.99	0.61
1:A:164:ASN:ND2	1:A:166:ARG:H	1.98	0.61
1:A:154:ILE:HD12	1:A:154:ILE:H	1.65	0.61
1:A:285:THR:HG23	1:A:379:GLY:HA2	1.82	0.61
1:B:42:SER:HB2	1:B:516:ARG:HH21	1.64	0.61
1:B:227:ILE:HG13	1:B:308:LEU:HD13	1.82	0.61
1:A:268:ILE:HD13	1:A:283:TRP:CD2	2.35	0.61
1:A:427:VAL:HG21	1:A:429:TYR:OH	2.00	0.61
1:B:181:LEU:HD12	1:B:186:LEU:HD23	1.82	0.60
1:B:427:VAL:CG1	1:B:429:TYR:H	2.13	0.60
1:A:105:TRP:HA	1:A:105:TRP:CE3	2.36	0.60
1:A:313:LEU:HD22	1:A:324:VAL:HG22	1.83	0.60
1:A:118:ILE:N	1:A:118:ILE:HD12	2.16	0.60
1:B:292:ILE:O	1:B:415:PRO:HD3	2.00	0.60
1:B:44:ASN:HD21	1:B:516:ARG:NE	1.99	0.60
1:A:128:HIS:HB2	2:A:601:NAG:C8	2.29	0.59
1:A:154:ILE:HD12	1:A:154:ILE:N	2.17	0.59
1:A:226:PHE:C	1:A:227:ILE:HD12	2.22	0.59
1:A:501:LEU:HD22	1:A:503:ILE:HD11	1.84	0.59
1:B:95:VAL:HG21	1:B:99:ARG:HG2	1.84	0.59
1:A:66:ARG:HA	1:A:150:PRO:CB	2.32	0.59
1:B:166:ARG:HD2	1:B:171:TYR:OH	2.02	0.59
1:B:170:PRO:HB3	1:B:190:THR:CG2	2.33	0.59
1:A:135:GLY:H	1:A:139:PRO:HA	1.68	0.59

*Continued on next page...*

*Continued from previous page...*

Atom-1	Atom-2	Interatomic distance (Å)	Clash overlap (Å)
1:A:176:LEU:O	1:A:190:THR:HG23	2.03	0.59
1:A:367:VAL:HG13	1:A:368:PRO:HD2	1.85	0.59
1:A:48:PHE:CZ	1:A:50:GLY:HA2	2.37	0.59
1:A:453:THR:HG22	1:A:455:VAL:N	2.15	0.59
1:A:46:ILE:O	1:A:85:ILE:HD11	2.03	0.59
1:A:209:HIS:CD2	1:A:210:PRO:O	2.56	0.59
1:B:198:ASP:OD1	1:B:212:ARG:NH2	2.36	0.59
1:A:66:ARG:HA	1:A:150:PRO:HB3	1.84	0.58
1:A:186:LEU:O	1:A:203:ARG:HA	2.04	0.58
1:A:493:GLU:O	1:A:501:LEU:HD23	2.04	0.58
1:B:382:PRO:HA	1:B:389:PHE:CZ	2.39	0.58
1:A:178:ALA:O	1:A:188:SER:HA	2.03	0.58
1:B:211:ILE:N	1:B:211:ILE:HD12	2.19	0.58
1:A:70:TYR:OH	1:A:146:VAL:HG21	2.04	0.58
1:B:66:ARG:HD3	1:B:146:VAL:HG11	1.85	0.58
1:B:232:ILE:HD12	1:B:244:TYR:CD1	2.39	0.58
1:A:249:GLU:OE2	1:A:264:ARG:HD2	2.02	0.57
1:A:404:ARG:HG2	1:A:404:ARG:NH1	2.18	0.57
1:A:227:ILE:O	1:A:228:SER:HB3	2.04	0.57
1:A:120:VAL:O	1:A:131:ALA:HA	2.04	0.57
1:A:435:VAL:HG23	1:A:450:PHE:HB2	1.87	0.57
1:A:140:ILE:H	1:A:140:ILE:HD13	1.68	0.57
1:B:472:LEU:HD23	1:B:472:LEU:H	1.69	0.57
1:B:433:GLN:HE21	1:B:491:ALA:HA	1.68	0.57
1:A:501:LEU:HD22	1:A:503:ILE:HD12	1.86	0.57
1:B:472:LEU:H	1:B:472:LEU:CD2	2.17	0.57
1:B:291:LEU:HD23	1:B:413:VAL:HG13	1.86	0.56
1:A:170:PRO:HD3	1:A:177:THR:OG1	2.05	0.56
1:A:187:TYR:CE2	1:A:203:ARG:HD3	2.40	0.56
1:A:309:GLN:HA	1:A:309:GLN:OE1	2.04	0.56
1:A:104:LYS:HD2	1:A:110:ILE:HD11	1.87	0.56
1:A:378:PRO:HG3	1:A:399:VAL:HG23	1.88	0.56
1:B:469:TRP:O	1:B:470:HIS:CB	2.54	0.56
1:A:457:THR:H	1:A:489:ILE:HD11	1.70	0.56
1:B:84:ASN:OD1	1:B:86:LYS:HB2	2.06	0.56
1:A:265:ILE:HB	1:A:291:LEU:HD11	1.87	0.56
1:B:141:CYS:SG	1:B:165:GLY:HA2	2.45	0.56
1:B:376:PRO:HG2	1:B:389:PHE:CZ	2.41	0.55
1:A:389:PHE:H	1:A:389:PHE:HD2	1.53	0.55
1:A:285:THR:O	1:A:285:THR:CG2	2.52	0.55
1:B:307:GLU:HB2	1:B:329:THR:HG22	1.88	0.55

*Continued on next page...*

*Continued from previous page...*

Atom-1	Atom-2	Interatomic distance (Å)	Clash overlap (Å)
1:B:239:GLU:OE2	1:B:383:SER:HA	2.06	0.55
1:B:374:PRO:HB3	1:B:399:VAL:HG12	1.88	0.55
1:B:30:PRO:HA	1:B:476:LEU:HG	1.89	0.55
1:B:66:ARG:O	1:B:68:ARG:HG2	2.07	0.55
1:B:396:PRO:HD2	1:B:399:VAL:HG21	1.88	0.55
1:B:76:HIS:CE1	1:B:92:VAL:HG22	2.42	0.55
1:B:395:LEU:HB3	1:B:399:VAL:CG2	2.36	0.55
1:A:420:PRO:CG	1:A:423:ILE:HD11	2.37	0.54
1:A:426:ASP:N	1:A:426:ASP:OD2	2.40	0.54
1:A:249:GLU:OE2	1:A:264:ARG:HD3	2.07	0.54
1:A:32:LEU:HB2	1:A:478:GLU:HB3	1.89	0.54
1:A:93:TRP:CH2	1:A:142:THR:HG22	2.43	0.54
1:A:384:LYS:NZ	1:A:384:LYS:HB3	2.23	0.54
1:B:176:LEU:O	1:B:190:THR:HG23	2.07	0.54
1:B:427:VAL:HG13	1:B:428:ASN:N	2.23	0.54
1:A:30:PRO:HG3	1:A:476:LEU:CD1	2.37	0.54
1:A:31:ARG:HD2	1:A:31:ARG:N	2.23	0.54
1:A:56:SER:CA	1:A:506:THR:HG22	2.38	0.54
1:A:401:THR:O	1:A:404:ARG:HB3	2.07	0.54
1:A:45:VAL:HG11	1:A:482:VAL:HG13	1.88	0.53
1:B:186:LEU:O	1:B:203:ARG:HA	2.08	0.53
1:A:161:HIS:O	1:A:162:PHE:HB2	2.08	0.53
1:B:278:SER:O	1:B:280:VAL:N	2.38	0.53
1:A:279:LEU:HD12	1:A:400:ILE:HG23	1.90	0.53
1:B:359:ARG:NH2	1:B:366:TRP:NE1	2.56	0.53
1:A:218:SER:HB2	1:A:252:ILE:CD1	2.39	0.53
1:B:45:VAL:HG12	1:B:482:VAL:HG13	1.90	0.53
1:A:199:PHE:CZ	1:A:225:ARG:NH1	2.76	0.53
1:A:267:GLN:O	1:A:268:ILE:HG13	2.09	0.53
1:A:427:VAL:HG13	1:A:429:TYR:CD2	2.44	0.53
1:A:333:ASN:HB2	1:B:298:PRO:HD2	1.91	0.52
1:A:366:TRP:HB2	1:B:256:HIS:CE1	2.44	0.52
1:B:279:LEU:CD2	1:B:404:ARG:HD3	2.27	0.52
1:B:395:LEU:HB3	1:B:399:VAL:HG21	1.92	0.52
1:A:402:PHE:O	1:A:403:ALA:CB	2.52	0.52
1:B:62:LEU:HD11	1:B:64:GLU:OE2	2.08	0.52
1:A:134:THR:HG23	1:A:171:TYR:O	2.08	0.52
1:A:503:ILE:HD12	1:A:503:ILE:N	2.25	0.52
1:B:503:ILE:HD12	1:B:503:ILE:N	2.25	0.52
1:A:35:SER:OG	1:A:38:GLU:HG3	2.09	0.52
1:A:204:THR:O	1:A:205:LEU:HB2	2.09	0.52

*Continued on next page...*

*Continued from previous page...*

Atom-1	Atom-2	Interatomic distance (Å)	Clash overlap (Å)
1:A:455:VAL:O	1:A:455:VAL:HG13	2.10	0.52
1:B:291:LEU:HD23	1:B:413:VAL:CG1	2.40	0.52
1:A:335:PHE:HB3	1:B:335:PHE:CD2	2.45	0.51
1:B:46:ILE:N	1:B:46:ILE:HD12	2.26	0.51
1:B:402:PHE:O	1:B:403:ALA:HB3	2.09	0.51
1:B:48:PHE:CZ	1:B:50:GLY:HA2	2.45	0.51
1:A:39:MET:HE3	1:A:44:ASN:HB3	1.90	0.51
1:A:46:ILE:HB	1:A:511:GLN:HB3	1.91	0.51
1:B:198:ASP:CG	1:B:212:ARG:HH22	2.14	0.51
1:B:212:ARG:HG2	1:B:213:THR:N	2.24	0.51
1:B:489:ILE:HG23	1:B:503:ILE:HG23	1.92	0.51
1:A:274:GLY:HA2	1:A:284:THR:HG23	1.92	0.51
1:A:66:ARG:O	1:A:68:ARG:HG3	2.11	0.51
1:A:453:THR:H	1:A:489:ILE:HD12	1.75	0.51
1:A:462:VAL:CG2	1:A:477:LEU:HD11	2.41	0.51
1:B:42:SER:HB2	1:B:516:ARG:NH2	2.26	0.51
1:B:466:LYS:O	1:B:467:GLU:HG2	2.11	0.51
1:A:149:HIS:C	1:A:151:GLU:H	2.13	0.51
1:B:402:PHE:C	1:B:404:ARG:H	2.14	0.51
1:A:234:GLU:O	1:A:320:LYS:HD3	2.12	0.50
1:B:90:LYS:O	1:B:90:LYS:HG3	2.11	0.50
1:B:46:ILE:HB	1:B:511:GLN:HB3	1.94	0.50
1:B:235:SER:CA	1:B:320:LYS:HD3	2.42	0.50
1:B:427:VAL:HG11	1:B:429:TYR:CE1	2.47	0.50
1:B:203:ARG:HB2	1:B:283:TRP:CZ2	2.46	0.50
1:A:152:ASP:HB2	1:A:154:ILE:CD1	2.40	0.50
1:A:46:ILE:HD12	1:A:511:GLN:NE2	2.26	0.50
1:B:345:MET:O	1:B:348:VAL:HG22	2.11	0.50
1:A:178:ALA:HB1	1:A:228:SER:HA	1.94	0.50
1:B:453:THR:HG22	1:B:455:VAL:N	2.21	0.50
1:A:109:ASP:HB3	1:A:113:GLU:HG3	1.93	0.49
1:A:206:GLY:O	1:A:208:HIS:N	2.41	0.49
1:A:399:VAL:HG13	1:A:400:ILE:H	1.77	0.49
1:A:333:ASN:HB2	1:B:298:PRO:CD	2.42	0.49
1:B:85:ILE:HG23	1:B:511:GLN:NE2	2.27	0.49
1:B:120:VAL:HB	1:B:132:CYS:HB2	1.93	0.49
1:B:212:ARG:NH2	1:B:215:GLN:HB3	2.27	0.49
1:B:367:VAL:HG22	1:B:368:PRO:CD	2.40	0.49
1:A:69:LEU:HD13	1:A:69:LEU:O	2.12	0.49
1:A:491:ALA:HB3	1:A:504:GLY:HA3	1.94	0.49
1:A:313:LEU:CD2	1:A:324:VAL:HG22	2.42	0.49

*Continued on next page...*

*Continued from previous page...*

Atom-1	Atom-2	Interatomic distance (Å)	Clash overlap (Å)
1:A:335:PHE:CE2	1:B:425:THR:HG23	2.47	0.49
1:B:26:LYS:NZ	1:B:26:LYS:HB2	2.27	0.49
1:B:110:ILE:N	1:B:110:ILE:HD12	2.27	0.49
1:B:67:SER:O	1:B:68:ARG:HD2	2.13	0.49
1:B:91:ILE:HG13	1:B:155:PHE:CD1	2.48	0.49
1:B:313:LEU:CD2	1:B:324:VAL:HG22	2.42	0.49
1:A:140:ILE:HD13	1:A:140:ILE:N	2.27	0.49
1:A:157:LEU:HD13	1:A:157:LEU:O	2.13	0.48
1:B:287:LEU:HD22	1:B:409:MET:CE	2.41	0.48
1:B:441:ALA:HB3	1:B:444:GLY:O	2.13	0.48
1:A:427:VAL:HG11	1:A:429:TYR:CE1	2.48	0.48
1:B:207:HIS:CG	1:B:208:HIS:N	2.82	0.48
1:A:118:ILE:N	1:A:118:ILE:CD1	2.76	0.48
1:A:202:PHE:CZ	1:A:212:ARG:HD2	2.48	0.48
1:A:246:PHE:CZ	1:A:265:ILE:HD12	2.49	0.48
1:B:305:PHE:CD2	1:B:339:ALA:HB2	2.49	0.48
1:B:453:THR:HG22	1:B:454:ASP:N	2.27	0.48
1:B:358:HIS:HD2	1:B:406:HIS:HE1	1.61	0.48
1:B:350:ARG:HG3	1:B:350:ARG:HH11	1.78	0.48
1:A:377:ARG:O	1:A:380:THR:HB	2.14	0.48
1:B:158:GLN:HB3	1:B:161:HIS:CD2	2.49	0.48
1:B:278:SER:O	1:B:280:VAL:HG23	2.14	0.48
1:B:427:VAL:HG21	1:B:429:TYR:CZ	2.49	0.48
1:A:211:ILE:CD1	1:A:281:ASN:HA	2.44	0.47
1:A:429:TYR:O	1:A:430:GLN:HG3	2.14	0.47
1:B:146:VAL:HA	1:B:154:ILE:O	2.14	0.47
1:A:170:PRO:CD	1:A:190:THR:HG21	2.42	0.47
1:A:134:THR:O	1:A:136:ALA:N	2.42	0.47
1:B:85:ILE:H	1:B:511:GLN:NE2	2.11	0.47
1:B:142:THR:OG1	1:B:143:TYR:N	2.48	0.47
1:A:263:ALA:O	1:A:264:ARG:HG2	2.15	0.47
1:A:509:VAL:HG12	1:A:510:ALA:N	2.30	0.47
1:B:77:ILE:HG12	1:B:118:ILE:HG12	1.95	0.47
1:B:110:ILE:HD12	1:B:110:ILE:H	1.80	0.47
1:A:427:VAL:CG1	1:A:429:TYR:H	2.27	0.47
1:B:170:PRO:HB3	1:B:190:THR:HG21	1.97	0.47
1:A:160:SER:HB3	1:A:161:HIS:CE1	2.49	0.47
1:B:62:LEU:HD23	1:B:69:LEU:HD23	1.96	0.47
1:B:209:HIS:HD2	1:B:210:PRO:CD	2.23	0.47
1:B:268:ILE:HD11	1:B:286:PHE:HB2	1.96	0.47
1:B:358:HIS:HB2	1:B:369:TYR:HB2	1.96	0.47

*Continued on next page...*

*Continued from previous page...*

Atom-1	Atom-2	Interatomic distance (Å)	Clash overlap (Å)
1:B:427:VAL:HG13	1:B:429:TYR:N	2.22	0.47
1:A:115:ALA:HB3	1:A:117:PHE:CE1	2.50	0.47
1:A:358:HIS:CD2	1:A:406:HIS:HE1	2.33	0.47
1:B:212:ARG:HG2	1:B:213:THR:H	1.79	0.47
1:B:437:ASP:HB2	1:B:494:LEU:HD21	1.96	0.47
1:A:453:THR:CG2	1:A:454:ASP:N	2.77	0.46
1:A:92:VAL:HG12	1:A:94:PRO:HD3	1.98	0.46
1:A:323:ILE:N	1:A:323:ILE:HD12	2.31	0.46
1:A:287:LEU:HD11	1:A:379:GLY:HA3	1.96	0.46
1:B:208:HIS:CG	1:B:209:HIS:N	2.83	0.46
1:B:215:GLN:HG3	1:B:216:HIS:ND1	2.30	0.46
1:A:27:ASN:ND2	1:A:28:ASN:H	2.14	0.46
1:A:164:ASN:ND2	1:A:166:ARG:HG3	2.31	0.46
1:A:285:THR:HG23	1:A:379:GLY:CA	2.44	0.46
1:B:62:LEU:HD13	1:B:63:ASP:N	2.30	0.46
1:A:128:HIS:ND1	2:A:601:NAG:H83	2.31	0.46
1:A:342:MET:HG3	1:A:421:ILE:CG1	2.46	0.46
1:A:482:VAL:HG12	1:A:510:ALA:HB1	1.97	0.46
1:B:85:ILE:H	1:B:511:GLN:HE22	1.64	0.46
1:B:170:PRO:HD3	1:B:190:THR:HG21	1.98	0.46
1:A:77:ILE:CD1	1:A:144:ILE:HD11	2.47	0.46
1:B:190:THR:CG2	1:B:191:ALA:H	2.19	0.46
1:B:298:PRO:HG2	1:B:299:ASN:H	1.81	0.46
1:A:432:THR:CG2	1:A:454:ASP:HB3	2.46	0.45
1:B:170:PRO:HB3	1:B:190:THR:HG22	1.96	0.45
1:B:432:THR:C	1:B:433:GLN:HG2	2.37	0.45
1:A:180:LEU:HD11	1:A:182:ILE:CD1	2.46	0.45
1:A:110:ILE:HA	1:A:114:CYS:HB2	1.98	0.45
1:A:399:VAL:HG13	1:A:400:ILE:N	2.32	0.45
1:B:268:ILE:HG13	1:B:286:PHE:HA	1.99	0.45
1:B:359:ARG:HD3	1:B:361:GLY:O	2.16	0.45
1:B:450:PHE:CD2	1:B:501:LEU:HD22	2.51	0.45
1:A:427:VAL:HG13	1:A:429:TYR:CE2	2.52	0.45
1:A:220:TRP:O	1:A:288:LYS:NZ	2.45	0.45
1:B:141:CYS:O	1:B:162:PHE:HA	2.17	0.45
1:B:389:PHE:N	1:B:389:PHE:CD2	2.84	0.45
1:B:422:MET:HE1	1:B:461:VAL:HG21	1.99	0.45
1:A:91:ILE:HD13	1:A:157:LEU:HB2	1.98	0.45
1:B:56:SER:H	1:B:506:THR:HG22	1.81	0.45
1:A:66:ARG:HA	1:A:150:PRO:HB2	1.99	0.45
1:A:453:THR:HG22	1:A:455:VAL:HG12	1.93	0.45

*Continued on next page...*



*Continued from previous page...*

Atom-1	Atom-2	Interatomic distance (Å)	Clash overlap (Å)
1:A:149:HIS:HB2	1:A:152:ASP:OD2	2.17	0.44
1:B:396:PRO:O	1:B:399:VAL:HG22	2.17	0.44
1:A:512:LEU:C	1:A:512:LEU:HD23	2.38	0.44
1:B:39:MET:SD	1:B:480:MET:HB3	2.57	0.44
1:B:72:GLY:HA3	1:B:118:ILE:HG21	1.98	0.44
1:B:386:PHE:C	1:B:388:GLY:H	2.20	0.44
1:A:181:LEU:HA	1:A:185:GLU:O	2.17	0.44
1:A:512:LEU:HD23	1:A:513:PRO:O	2.17	0.44
1:B:69:LEU:HD13	1:B:69:LEU:O	2.17	0.44
1:A:239:GLU:OE1	1:A:384:LYS:HG3	2.17	0.44
1:A:431:PHE:N	1:A:431:PHE:CD2	2.83	0.44
1:B:359:ARG:NH2	1:B:366:TRP:HE1	2.15	0.44
1:A:95:VAL:HG13	1:A:99:ARG:HB3	1.99	0.44
1:A:277:ARG:O	1:A:278:SER:O	2.35	0.44
1:A:287:LEU:HD11	1:A:378:PRO:O	2.17	0.44
1:B:500:GLN:NE2	1:B:513:PRO:HA	2.33	0.44
1:A:502:TYR:CD1	1:A:502:TYR:N	2.85	0.44
1:A:287:LEU:CD2	1:A:409:MET:HE1	2.39	0.44
1:B:36:TYR:CD1	1:B:484:ARG:HA	2.53	0.44
1:B:55:SER:H	1:B:74:LYS:HB3	1.83	0.44
1:B:330:THR:HG22	1:B:332:SER:N	2.32	0.44
1:A:182:ILE:CD1	1:A:231:LEU:HG	2.48	0.44
1:B:453:THR:HB	1:B:457:THR:HG22	2.00	0.44
1:A:492:MET:HG3	1:A:501:LEU:HD21	2.01	0.43
1:B:76:HIS:CE1	1:B:92:VAL:HG13	2.52	0.43
1:B:417:ASN:O	1:B:418:ASN:HB2	2.18	0.43
1:B:171:TYR:CG	1:B:194:PHE:HA	2.53	0.43
1:B:422:MET:HE3	1:B:461:VAL:HG11	1.99	0.43
1:A:39:MET:HE3	1:A:45:VAL:HG13	2.00	0.43
1:B:81:ASN:HD21	1:B:83:VAL:HB	1.83	0.43
1:B:202:PHE:CZ	1:B:212:ARG:HG3	2.54	0.43
1:B:277:ARG:HD3	1:B:397:ASP:OD1	2.18	0.43
1:A:137:PHE:CD2	1:A:171:TYR:HB3	2.53	0.43
1:B:83:VAL:HG22	1:B:498:GLN:OE1	2.18	0.43
1:A:375:TYR:CD1	1:A:376:PRO:HA	2.53	0.43
1:B:294:SER:HB3	1:B:304:HIS:ND1	2.34	0.43
1:A:105:TRP:HA	1:A:105:TRP:HE3	1.80	0.43
1:A:231:LEU:HD23	1:A:231:LEU:HA	1.76	0.43
1:B:492:MET:HE3	1:B:501:LEU:HD21	2.00	0.43
1:B:453:THR:CG2	1:B:454:ASP:N	2.81	0.43
1:A:118:ILE:HA	1:A:133:GLY:CA	2.49	0.43

*Continued on next page...*



*Continued from previous page...*

Atom-1	Atom-2	Interatomic distance (Å)	Clash overlap (Å)
1:B:441:ALA:C	1:B:443:ASP:H	2.22	0.43
1:A:292:ILE:O	1:A:415:PRO:HD3	2.18	0.43
1:A:382:PRO:HA	1:A:389:PHE:CZ	2.53	0.43
1:B:115:ALA:HB3	1:B:117:PHE:CE1	2.53	0.43
1:B:212:ARG:HH21	1:B:215:GLN:HB3	1.83	0.43
1:B:287:LEU:HA	1:B:407:PRO:O	2.19	0.43
1:B:435:VAL:HG22	1:B:492:MET:HE2	1.99	0.43
1:B:436:VAL:HG23	1:B:448:VAL:O	2.18	0.43
1:A:229:ALA:HA	1:A:244:TYR:O	2.19	0.43
1:A:203:ARG:NH2	1:A:273:PHE:CZ	2.87	0.42
1:A:356:TYR:OH	1:A:377:ARG:NH1	2.52	0.42
1:B:132:CYS:HG	1:B:141:CYS:HB3	1.84	0.42
1:A:287:LEU:CD1	1:A:379:GLY:HA3	2.49	0.42
1:B:123:ALA:O	1:B:181:LEU:HD22	2.20	0.42
1:B:77:ILE:HD13	1:B:144:ILE:HD11	2.02	0.42
1:B:503:ILE:HG22	1:B:504:GLY:N	2.34	0.42
1:A:503:ILE:CD1	1:A:503:ILE:N	2.82	0.42
1:B:170:PRO:HD3	1:B:177:THR:OG1	2.19	0.42
1:A:208:HIS:ND1	1:A:209:HIS:N	2.68	0.42
1:B:287:LEU:HD11	1:B:379:GLY:HA3	2.00	0.42
1:A:75:ASP:HB3	1:A:94:PRO:HB3	2.00	0.42
1:B:389:PHE:N	1:B:389:PHE:HD2	2.18	0.42
1:A:279:LEU:HD23	1:A:279:LEU:HA	1.82	0.42
1:A:434:ILE:CG1	1:A:435:VAL:N	2.83	0.42
1:B:77:ILE:CG1	1:B:118:ILE:HG12	2.49	0.42
1:B:229:ALA:HA	1:B:244:TYR:O	2.19	0.42
1:A:55:SER:O	1:A:73:ALA:HB1	2.19	0.42
1:A:121:LEU:C	1:A:122:GLU:HG2	2.40	0.42
1:A:427:VAL:HG21	1:A:429:TYR:CZ	2.55	0.42
1:B:66:ARG:CD	1:B:146:VAL:HG11	2.47	0.42
1:B:202:PHE:CE1	1:B:212:ARG:HG3	2.54	0.42
1:B:345:MET:CA	1:B:348:VAL:HG22	2.47	0.42
1:A:56:SER:HB3	1:A:58:HIS:CD2	2.54	0.41
1:A:84:ASN:C	1:A:86:LYS:H	2.23	0.41
1:A:400:ILE:O	1:A:402:PHE:O	2.38	0.41
1:A:453:THR:HG22	1:A:454:ASP:N	2.34	0.41
1:A:512:LEU:HA	1:A:513:PRO:HD3	1.83	0.41
1:B:56:SER:N	1:B:506:THR:HG22	2.35	0.41
1:B:110:ILE:H	1:B:110:ILE:CD1	2.34	0.41
1:B:472:LEU:CD2	1:B:472:LEU:N	2.83	0.41
1:A:416:ILE:O	1:A:417:ASN:HB2	2.20	0.41

*Continued on next page...*

*Continued from previous page...*

Atom-1	Atom-2	Interatomic distance (Å)	Clash overlap (Å)
1:B:26:LYS:NZ	1:B:466:LYS:NZ	2.68	0.41
1:B:61:LEU:HB3	1:B:70:TYR:HB2	2.01	0.41
1:B:193:ASP:OD1	1:B:195:MET:HB2	2.20	0.41
1:B:203:ARG:HB2	1:B:283:TRP:HZ2	1.85	0.41
1:B:261:THR:HG22	1:B:262:HIS:N	2.35	0.41
1:A:223:ASP:N	1:A:224:PRO:CD	2.83	0.41
1:B:518:ASP:O	1:B:519:ILE:HG12	2.21	0.41
1:A:77:ILE:HD13	1:A:144:ILE:HD11	2.02	0.41
1:A:401:THR:C	1:A:402:PHE:O	2.58	0.41
1:A:427:VAL:HG12	1:A:429:TYR:H	1.85	0.41
1:B:395:LEU:CD2	1:B:399:VAL:HG21	2.43	0.41
1:A:74:LYS:O	1:A:76:HIS:N	2.54	0.41
1:B:57:TYR:HE1	1:B:506:THR:O	2.04	0.41
1:B:191:ALA:HA	1:B:199:PHE:HA	2.02	0.41
1:A:62:LEU:C	1:A:62:LEU:HD13	2.41	0.41
1:B:26:LYS:HZ2	1:B:466:LYS:HZ2	1.69	0.41
1:B:209:HIS:CD2	1:B:210:PRO:HD2	2.46	0.41
1:A:244:TYR:HA	1:A:266:GLY:O	2.21	0.41
1:A:342:MET:HG3	1:A:421:ILE:HG12	2.02	0.41
1:B:56:SER:HA	1:B:506:THR:HG22	2.02	0.41
1:B:207:HIS:CG	1:B:208:HIS:H	2.38	0.41
1:B:212:ARG:HH21	1:B:215:GLN:CB	2.34	0.41
1:B:396:PRO:HD2	1:B:399:VAL:CG2	2.50	0.41
1:A:180:LEU:HD13	1:A:180:LEU:C	2.42	0.41
1:A:392:THR:O	1:A:395:LEU:HD12	2.21	0.41
1:B:77:ILE:HG22	1:B:155:PHE:HZ	1.86	0.41
1:B:450:PHE:HD2	1:B:501:LEU:HD22	1.86	0.41
2:B:601:NAG:O3	2:B:601:NAG:C7	2.68	0.41
1:A:268:ILE:HD13	1:A:283:TRP:CE2	2.56	0.40
1:B:157:LEU:HD13	1:B:158:GLN:N	2.35	0.40
1:A:402:PHE:O	1:A:404:ARG:N	2.50	0.40
1:A:316:SER:HB2	1:A:323:ILE:CD1	2.50	0.40
1:A:482:VAL:HG12	1:A:482:VAL:O	2.21	0.40
1:B:274:GLY:HA2	1:B:282:LYS:O	2.20	0.40
1:A:135:GLY:HA3	1:A:138:HIS:O	2.21	0.40
1:B:208:HIS:CG	1:B:209:HIS:H	2.39	0.40
1:B:212:ARG:O	1:B:282:LYS:HA	2.21	0.40

There are no symmetry-related clashes.

## 5.3 Torsion angles

### 5.3.1 Protein backbone

In the following table, the Percentiles column shows the percent Ramachandran outliers of the chain as a percentile score with respect to all X-ray entries followed by that with respect to entries of similar resolution.

The Analysed column shows the number of residues for which the backbone conformation was analysed, and the total number of residues.

Mol	Chain	Analysed	Favoured	Allowed	Outliers	Percentiles	
1	A	480/495 (97%)	408 (85%)	55 (12%)	17 (4%)	3	12
1	B	493/495 (100%)	410 (83%)	68 (14%)	15 (3%)	4	15
All	All	973/990 (98%)	818 (84%)	123 (13%)	32 (3%)	4	13

All (32) Ramachandran outliers are listed below:

Mol	Chain	Res	Type
1	A	161	HIS
1	A	207	HIS
1	A	257	SER
1	B	153	ASN
1	B	372	ARG
1	B	443	ASP
1	B	516	ARG
1	A	42	SER
1	A	75	ASP
1	A	95	VAL
1	A	147	GLY
1	A	158	GLN
1	A	159	ASP
1	A	206	GLY
1	A	278	SER
1	A	456	GLY
1	B	85	ILE
1	B	162	PHE
1	B	307	GLU
1	B	391	SER
1	B	470	HIS
1	B	497	LYS
1	A	55	SER
1	B	279	LEU
1	A	49	ASN

*Continued on next page...*

*Continued from previous page...*

Mol	Chain	Res	Type
1	B	257	SER
1	A	299	ASN
1	B	466	LYS
1	B	519	ILE
1	A	298	PRO
1	B	298	PRO
1	A	146	VAL

### 5.3.2 Protein sidechains [i](#)

In the following table, the Percentiles column shows the percent sidechain outliers of the chain as a percentile score with respect to all X-ray entries followed by that with respect to entries of similar resolution.

The Analysed column shows the number of residues for which the sidechain conformation was analysed, and the total number of residues.

Mol	Chain	Analysed	Rotameric	Outliers	Percentiles	
1	A	428/439 (98%)	397 (93%)	31 (7%)	14	38
1	B	439/439 (100%)	412 (94%)	27 (6%)	18	47
All	All	867/878 (99%)	809 (93%)	58 (7%)	16	43

All (58) residues with a non-rotameric sidechain are listed below:

Mol	Chain	Res	Type
1	A	27	ASN
1	A	31	ARG
1	A	40	LEU
1	A	61	LEU
1	A	69	LEU
1	A	94	PRO
1	A	101	ASP
1	A	105	TRP
1	A	140	ILE
1	A	155	PHE
1	A	159	ASP
1	A	161	HIS
1	A	190	THR
1	A	203	ARG
1	A	218	SER
1	A	224	PRO

*Continued on next page...*

*Continued from previous page...*

<b>Mol</b>	<b>Chain</b>	<b>Res</b>	<b>Type</b>
1	A	231	LEU
1	A	308	LEU
1	A	314	MET
1	A	389	PHE
1	A	390	ASP
1	A	413	VAL
1	A	427	VAL
1	A	436	VAL
1	A	443	ASP
1	A	457	THR
1	A	476	LEU
1	A	485	GLU
1	A	487	THR
1	A	497	LYS
1	A	501	LEU
1	B	28	ASN
1	B	61	LEU
1	B	101	ASP
1	B	109	ASP
1	B	121	LEU
1	B	141	CYS
1	B	152	ASP
1	B	166	ARG
1	B	210	PRO
1	B	218	SER
1	B	268	ILE
1	B	271	ASN
1	B	290	ARG
1	B	302	ASP
1	B	308	LEU
1	B	314	MET
1	B	329	THR
1	B	347	ASP
1	B	389	PHE
1	B	413	VAL
1	B	417	ASN
1	B	426	ASP
1	B	427	VAL
1	B	436	VAL
1	B	469	TRP
1	B	472	LEU
1	B	496	THR

Sometimes sidechains can be flipped to improve hydrogen bonding and reduce clashes. All (33) such sidechains are listed below:

Mol	Chain	Res	Type
1	A	27	ASN
1	A	76	HIS
1	A	164	ASN
1	A	209	HIS
1	A	215	GLN
1	A	216	HIS
1	A	370	GLN
1	A	406	HIS
1	A	411	ASN
1	A	417	ASN
1	A	433	GLN
1	A	511	GLN
1	B	27	ASN
1	B	76	HIS
1	B	81	ASN
1	B	138	HIS
1	B	161	HIS
1	B	164	ASN
1	B	209	HIS
1	B	215	GLN
1	B	267	GLN
1	B	281	ASN
1	B	315	ASN
1	B	358	HIS
1	B	365	GLN
1	B	406	HIS
1	B	411	ASN
1	B	417	ASN
1	B	433	GLN
1	B	445	GLN
1	B	499	GLN
1	B	500	GLN
1	B	511	GLN

### 5.3.3 RNA [i](#)

There are no RNA molecules in this entry.

## 5.4 Non-standard residues in protein, DNA, RNA chains [i](#)

There are no non-standard protein/DNA/RNA residues in this entry.

## 5.5 Carbohydrates [i](#)

There are no monosaccharides in this entry.

## 5.6 Ligand geometry [i](#)

4 ligands are modelled in this entry.

In the following table, the Counts columns list the number of bonds (or angles) for which Mogul statistics could be retrieved, the number of bonds (or angles) that are observed in the model and the number of bonds (or angles) that are defined in the Chemical Component Dictionary. The Link column lists molecule types, if any, to which the group is linked. The Z score for a bond length (or angle) is the number of standard deviations the observed value is removed from the expected value. A bond length (or angle) with  $|Z| > 2$  is considered an outlier worth inspection. RMSZ is the root-mean-square of all Z scores of the bond lengths (or angles).

Mol	Type	Chain	Res	Link	Bond lengths			Bond angles		
					Counts	RMSZ	# Z  > 2	Counts	RMSZ	# Z  > 2
2	NAG	B	600	-	15,15,15	0.51	0	21,21,21	0.63	0
2	NAG	B	601	-	15,15,15	0.56	0	21,21,21	0.64	0
2	NAG	A	600	-	15,15,15	0.74	0	21,21,21	1.04	1 (4%)
2	NAG	A	601	-	15,15,15	0.65	0	21,21,21	1.30	2 (9%)

In the following table, the Chirals column lists the number of chiral outliers, the number of chiral centers analysed, the number of these observed in the model and the number defined in the Chemical Component Dictionary. Similar counts are reported in the Torsion and Rings columns. '-' means no outliers of that kind were identified.

Mol	Type	Chain	Res	Link	Chirals	Torsions	Rings
2	NAG	B	600	-	-	3/6/26/26	0/1/1/1
2	NAG	B	601	-	-	6/6/26/26	0/1/1/1
2	NAG	A	600	-	-	4/6/26/26	0/1/1/1
2	NAG	A	601	-	-	3/6/26/26	0/1/1/1

There are no bond length outliers.

All (3) bond angle outliers are listed below:

Mol	Chain	Res	Type	Atoms	Z	Observed(°)	Ideal(°)
2	A	601	NAG	C4-C3-C2	-3.77	104.82	110.34
2	A	601	NAG	O5-C1-C2	2.80	112.33	109.52
2	A	600	NAG	C1-C2-N2	-2.03	108.37	110.73

There are no chirality outliers.

All (16) torsion outliers are listed below:

Mol	Chain	Res	Type	Atoms
2	A	600	NAG	C8-C7-N2-C2
2	A	600	NAG	O7-C7-N2-C2
2	A	601	NAG	C3-C2-N2-C7
2	A	601	NAG	C8-C7-N2-C2
2	A	601	NAG	O7-C7-N2-C2
2	B	600	NAG	C8-C7-N2-C2
2	B	600	NAG	O7-C7-N2-C2
2	B	601	NAG	C1-C2-N2-C7
2	B	601	NAG	C8-C7-N2-C2
2	B	601	NAG	O7-C7-N2-C2
2	A	600	NAG	O5-C5-C6-O6
2	B	601	NAG	O5-C5-C6-O6
2	A	600	NAG	C4-C5-C6-O6
2	B	601	NAG	C3-C2-N2-C7
2	B	600	NAG	O5-C5-C6-O6
2	B	601	NAG	C4-C5-C6-O6

There are no ring outliers.

3 monomers are involved in 7 short contacts:

Mol	Chain	Res	Type	Clashes	Symm-Clashes
2	B	600	NAG	2	0
2	B	601	NAG	2	0
2	A	601	NAG	3	0

## 5.7 Other polymers [i](#)

There are no such residues in this entry.

## 5.8 Polymer linkage issues [i](#)

There are no chain breaks in this entry.



## 6 Fit of model and data [i](#)

### 6.1 Protein, DNA and RNA chains [i](#)

EDS was not executed - this section is therefore empty.

### 6.2 Non-standard residues in protein, DNA, RNA chains [i](#)

EDS was not executed - this section is therefore empty.

### 6.3 Carbohydrates [i](#)

EDS was not executed - this section is therefore empty.

### 6.4 Ligands [i](#)

EDS was not executed - this section is therefore empty.

### 6.5 Other polymers [i](#)

EDS was not executed - this section is therefore empty.