



Full wwPDB X-ray Structure Validation Report ⓘ

Sep 19, 2020 – 09:39 AM BST

PDB ID : 6Q4N
Title : Fusidic acid bound AcrB_V340A
Authors : Tam, H.K.; Pos, K.M.
Deposited on : 2018-12-06
Resolution : 2.80 Å(reported)

This is a Full wwPDB X-ray Structure Validation Report for a publicly released PDB entry.

We welcome your comments at validation@mail.wwpdb.org

A user guide is available at

<https://www.wwpdb.org/validation/2017/XrayValidationReportHelp>

with specific help available everywhere you see the ⓘ symbol.

The following versions of software and data (see [references ⓘ](#)) were used in the production of this report:

MolProbity : 4.02b-467
Mogul : 1.8.5 (274361), CSD as541be (2020)
Xtriage (Phenix) : 1.13
EDS : 2.14.6
buster-report : 1.1.7 (2018)
Percentile statistics : 20191225.v01 (using entries in the PDB archive December 25th 2019)
Refmac : 5.8.0158
CCP4 : 7.0.044 (Gargrove)
Ideal geometry (proteins) : Engh & Huber (2001)
Ideal geometry (DNA, RNA) : Parkinson et al. (1996)
Validation Pipeline (wwPDB-VP) : 2.14.6

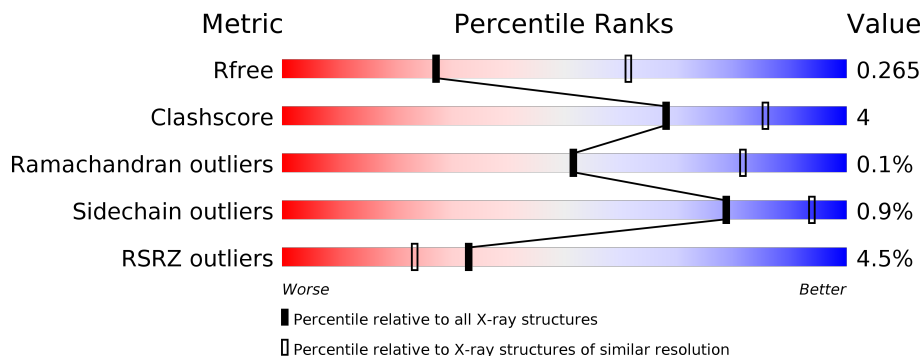
1 Overall quality at a glance

The following experimental techniques were used to determine the structure:

X-RAY DIFFRACTION

The reported resolution of this entry is 2.80 Å.

Percentile scores (ranging between 0-100) for global validation metrics of the entry are shown in the following graphic. The table shows the number of entries on which the scores are based.



Metric	Whole archive (#Entries)	Similar resolution (#Entries, resolution range(Å))
R_{free}	130704	3140 (2.80-2.80)
Clashscore	141614	3569 (2.80-2.80)
Ramachandran outliers	138981	3498 (2.80-2.80)
Sidechain outliers	138945	3500 (2.80-2.80)
RSRZ outliers	127900	3078 (2.80-2.80)

The table below summarises the geometric issues observed across the polymeric chains and their fit to the electron density. The red, orange, yellow and green segments on the lower bar indicate the fraction of residues that contain outliers for ≥ 3 , 2, 1 and 0 types of geometric quality criteria respectively. A grey segment represents the fraction of residues that are not modelled. The numeric value for each fraction is indicated below the corresponding segment, with a dot representing fractions $\leq 5\%$. The upper red bar (where present) indicates the fraction of residues that have poor fit to the electron density. The numeric value is given above the bar.

Mol	Chain	Length	Quality of chain
1	A	1057	
1	B	1057	
1	C	1057	
2	D	169	
2	E	169	

The following table lists non-polymeric compounds, carbohydrate monomers and non-standard residues in protein, DNA, RNA chains that are outliers for geometric or electron-density-fit criteria:

Mol	Type	Chain	Res	Chirality	Geometry	Clashes	Electron density
13	DDR	B	1116	-	-	-	X
5	LMT	B	1104	-	-	-	X
5	LMT	C	1103	-	-	-	X
7	PTY	B	1105	-	-	-	X

2 Entry composition i

There are 15 unique types of molecules in this entry. The entry contains 27045 atoms, of which 0 are hydrogens and 0 are deuteriums.

In the tables below, the ZeroOcc column contains the number of atoms modelled with zero occupancy, the AltConf column contains the number of residues with at least one atom in alternate conformation and the Trace column contains the number of residues modelled with at most 2 atoms.

- Molecule 1 is a protein called Multidrug efflux pump subunit AcrB.

Mol	Chain	Residues	Atoms					ZeroOcc	AltConf	Trace
			Total	C	N	O	S			
1	A	1036	Total 7879	C 5069	N 1302	O 1464	S 44	0	1	0
1	B	1034	Total 7853	C 5053	N 1296	O 1460	S 44	0	0	0
1	C	1034	Total 7858	C 5056	N 1297	O 1461	S 44	0	1	0

There are 27 discrepancies between the modelled and reference sequences:

Chain	Residue	Modelled	Actual	Comment	Reference
A	340	ALA	VAL	engineered mutation	UNP P31224
A	1050	LEU	-	expression tag	UNP P31224
A	1051	GLU	-	expression tag	UNP P31224
A	1052	HIS	-	expression tag	UNP P31224
A	1053	HIS	-	expression tag	UNP P31224
A	1054	HIS	-	expression tag	UNP P31224
A	1055	HIS	-	expression tag	UNP P31224
A	1056	HIS	-	expression tag	UNP P31224
A	1057	HIS	-	expression tag	UNP P31224
B	340	ALA	VAL	engineered mutation	UNP P31224
B	1050	LEU	-	expression tag	UNP P31224
B	1051	GLU	-	expression tag	UNP P31224
B	1052	HIS	-	expression tag	UNP P31224
B	1053	HIS	-	expression tag	UNP P31224
B	1054	HIS	-	expression tag	UNP P31224
B	1055	HIS	-	expression tag	UNP P31224
B	1056	HIS	-	expression tag	UNP P31224
B	1057	HIS	-	expression tag	UNP P31224
C	340	ALA	VAL	engineered mutation	UNP P31224
C	1050	LEU	-	expression tag	UNP P31224
C	1051	GLU	-	expression tag	UNP P31224
C	1052	HIS	-	expression tag	UNP P31224
C	1053	HIS	-	expression tag	UNP P31224

Continued on next page...

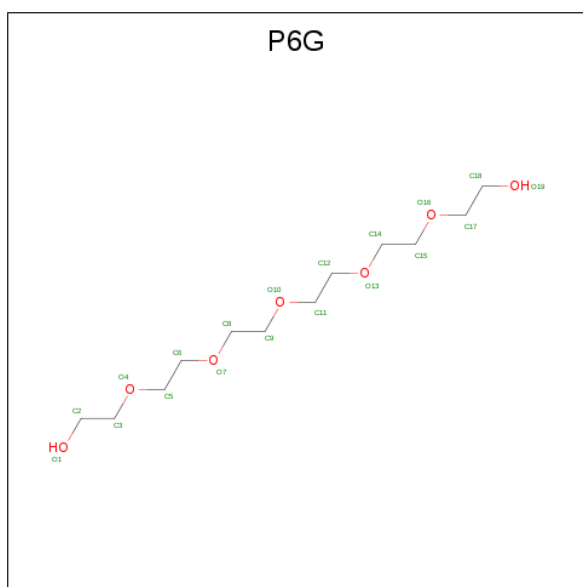
Continued from previous page...

Chain	Residue	Modelled	Actual	Comment	Reference
C	1054	HIS	-	expression tag	UNP P31224
C	1055	HIS	-	expression tag	UNP P31224
C	1056	HIS	-	expression tag	UNP P31224
C	1057	HIS	-	expression tag	UNP P31224

- Molecule 2 is a protein called DARPin.

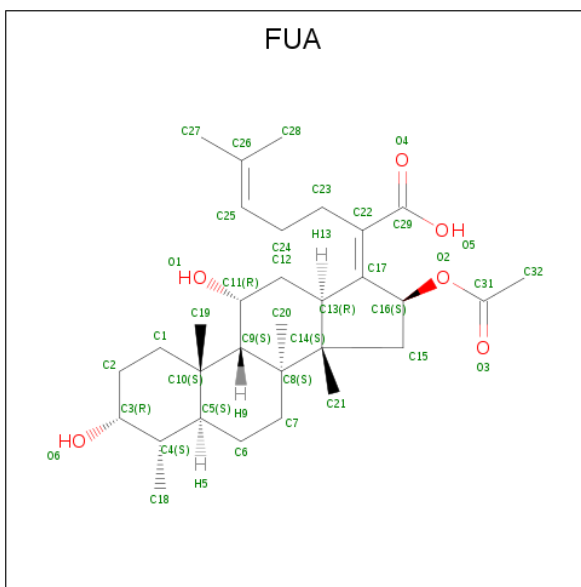
Mol	Chain	Residues	Atoms					ZeroOcc	AltConf	Trace
			Total	C	N	O	S			
2	D	156	1177	741	206	229	1	0	0	0
2	E	154	1167	736	204	226	1	0	0	0

- Molecule 3 is HEXAETHYLENE GLYCOL (three-letter code: P6G) (formula: C₁₂H₂₆O₇).



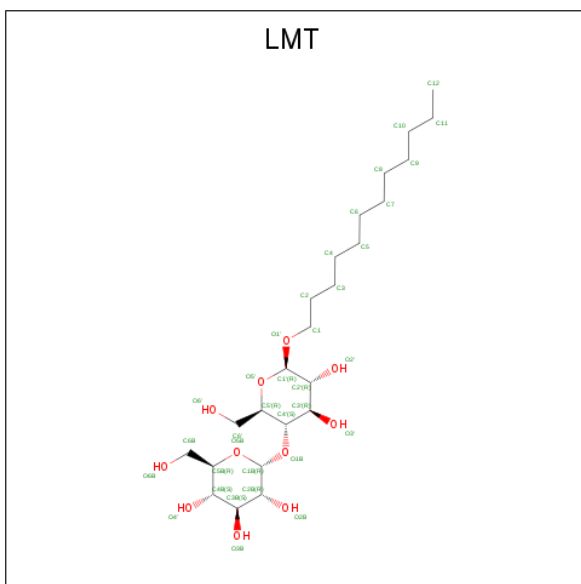
Mol	Chain	Residues	Atoms			ZeroOcc	AltConf
			Total	C	O		
3	A	1	19	12	7	0	0

- Molecule 4 is FUSIDIC ACID (three-letter code: FUA) (formula: C₃₁H₄₈O₆) (labeled as "Ligand of Interest" by author).



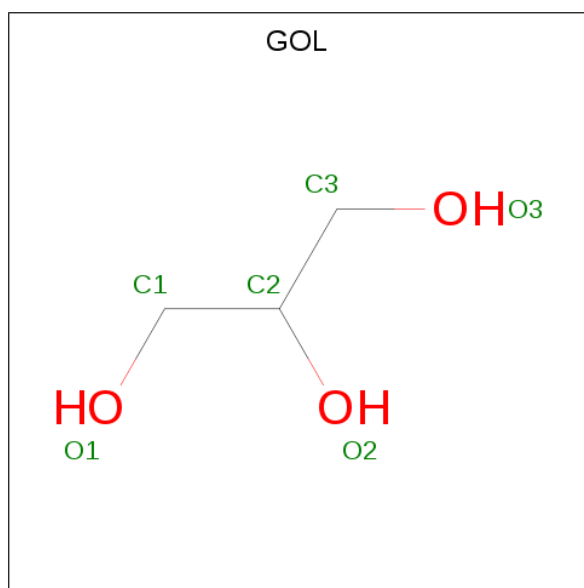
Mol	Chain	Residues	Atoms	ZeroOcc	AltConf
4	A	1	Total C O 37 31 6	0	0
4	B	1	Total C O 37 31 6	0	0
4	C	1	Total C O 37 31 6	0	0

- Molecule 5 is DODECYL-BETA-D-MALTOSE (three-letter code: LMT) (formula: $C_{24}H_{46}O_{11}$).



Mol	Chain	Residues	Atoms			ZeroOcc	AltConf
5	A	1	Total	C	O	0	0
			35	24	11		
5	A	1	Total	C	O	0	0
			35	24	11		
5	A	1	Total	C	O	0	0
			35	24	11		
5	B	1	Total	C	O	0	0
			35	24	11		
5	B	1	Total	C	O	0	0
			35	24	11		
5	B	1	Total	C	O	0	0
			35	24	11		
5	C	1	Total	C	O	0	0
			35	24	11		
5	C	1	Total	C	O	0	0
			35	24	11		

- Molecule 6 is GLYCEROL (three-letter code: GOL) (formula: $C_3H_8O_3$).



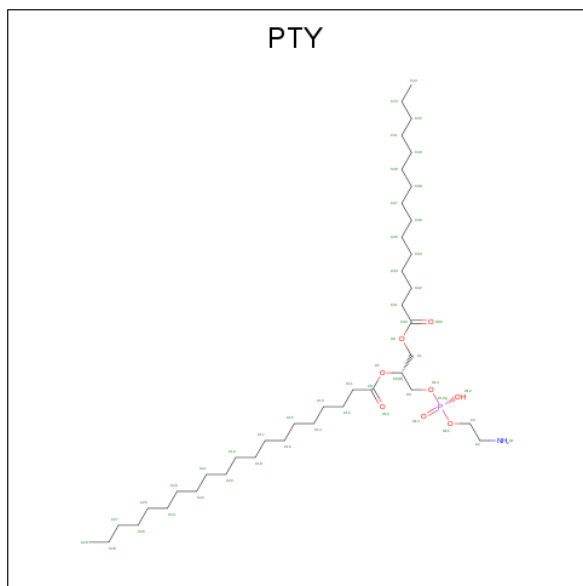
Mol	Chain	Residues	Atoms			ZeroOcc	AltConf
6	A	1	Total	C	O	0	0
			6	3	3		
6	A	1	Total	C	O	0	0
			6	3	3		
6	B	1	Total	C	O	0	0
			6	3	3		
6	C	1	Total	C	O	0	0
			6	3	3		

Continued on next page...

Continued from previous page...

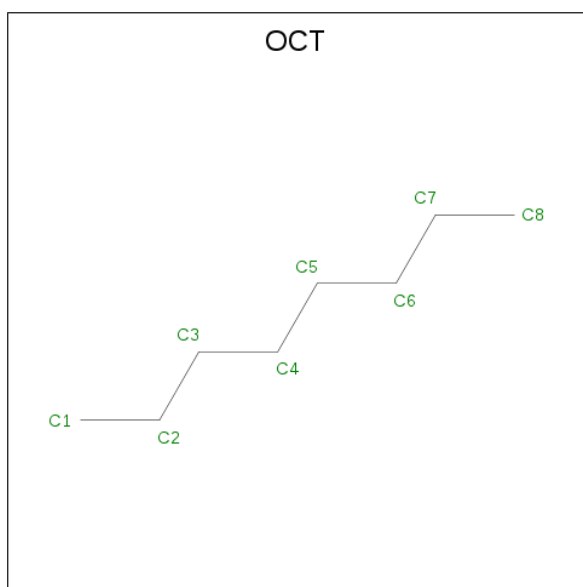
Mol	Chain	Residues	Atoms			ZeroOcc	AltConf
6	E	1	Total	C	O	0	0
			6	3	3		
6	E	1	Total	C	O	0	0
			6	3	3		

- Molecule 7 is PHOSPHATIDYLETHANOLAMINE (three-letter code: PTY) (formula: $C_{40}H_{80}NO_8P$).



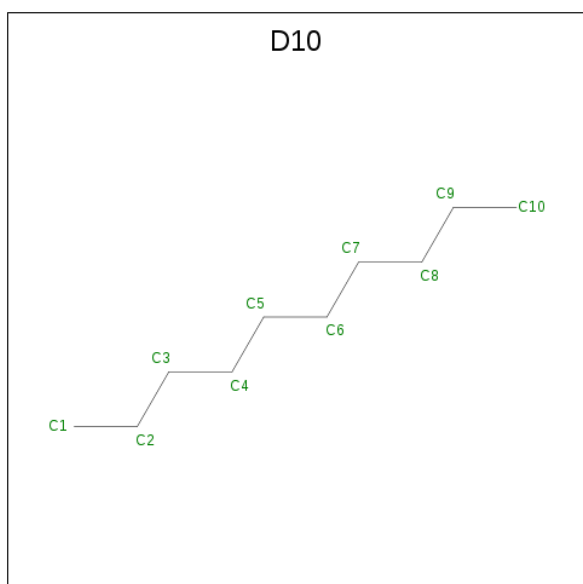
Mol	Chain	Residues	Atoms					ZeroOcc	AltConf
7	B	1	Total	C	N	O	P	0	0
			50	40	1	8	1		
7	C	1	Total	C	N	O	P	0	0
			50	40	1	8	1		
7	C	1	Total	C	N	O	P	0	0
			50	40	1	8	1		
7	C	1	Total	C	N	O	P	0	0
			50	40	1	8	1		

- Molecule 8 is N-OCTANE (three-letter code: OCT) (formula: C_8H_{18}).



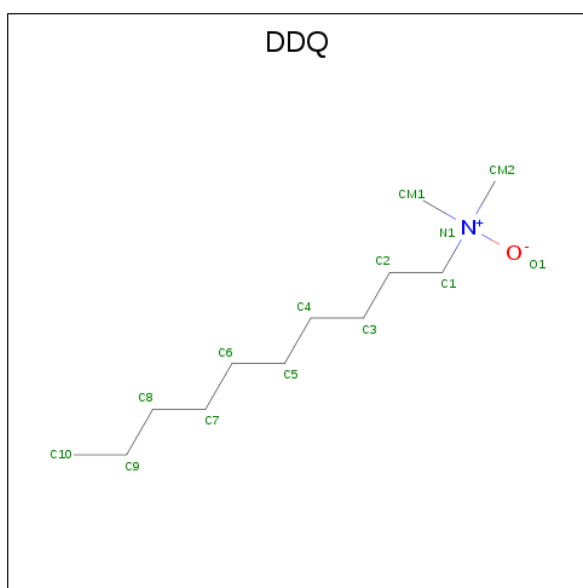
Mol	Chain	Residues	Atoms	ZeroOcc	AltConf
8	B	1	Total C 8 8	0	0
8	B	1	Total C 8 8	0	0
8	C	1	Total C 8 8	0	0
8	C	1	Total C 8 8	0	0
8	C	1	Total C 8 8	0	0

- Molecule 9 is DECANE (three-letter code: D10) (formula: C₁₀H₂₂).



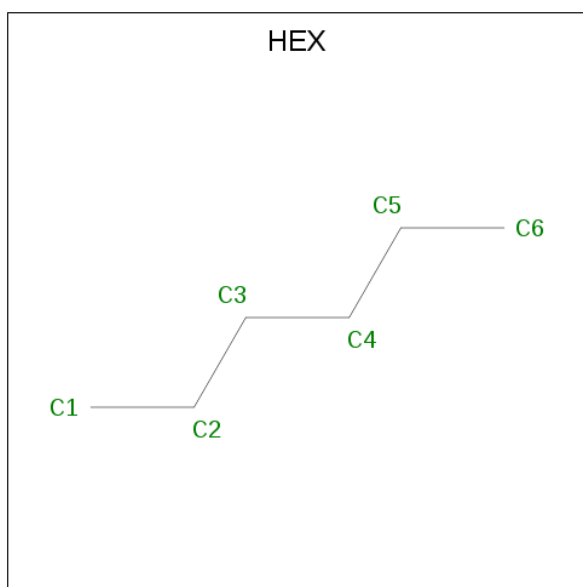
Mol	Chain	Residues	Atoms	ZeroOcc	AltConf
9	B	1	Total C 10 10	0	0
9	B	1	Total C 10 10	0	0
9	B	1	Total C 10 10	0	0
9	B	1	Total C 10 10	0	0
9	C	1	Total C 10 10	0	0

- Molecule 10 is DECYLAMINE-N,N-DIMETHYL-N-OXIDE (three-letter code: DDQ) (formula: C₁₂H₂₇NO).



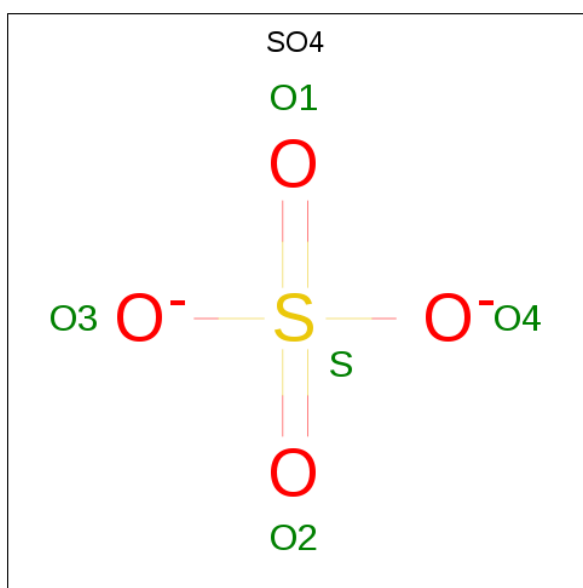
Mol	Chain	Residues	Atoms	ZeroOcc	AltConf
10	B	1	Total C N O 14 12 1 1	0	0
10	C	1	Total C N O 14 12 1 1	0	0

- Molecule 11 is HEXANE (three-letter code: HEX) (formula: C₆H₁₄).



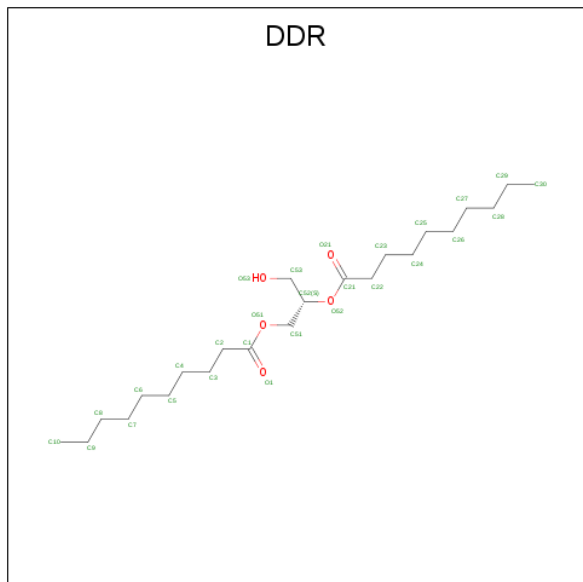
Mol	Chain	Residues	Atoms	ZeroOcc	AltConf
11	B	1	Total C 6 6	0	0
11	C	1	Total C 6 6	0	0

- Molecule 12 is SULFATE ION (three-letter code: SO4) (formula: O₄S).



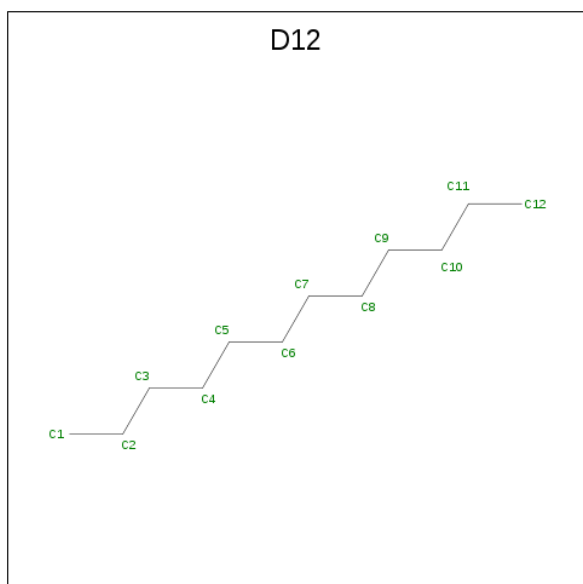
Mol	Chain	Residues	Atoms	ZeroOcc	AltConf
12	B	1	Total O S 5 4 1	0	0
12	C	1	Total O S 5 4 1	0	0

- Molecule 13 is (2S)-3-hydroxypropane-1,2-diyl didecanoate (three-letter code: DDR) (formula: $C_{23}H_{44}O_5$).



Mol	Chain	Residues	Atoms		ZeroOcc	AltConf
			Total	C O		
13	B	1	28	23 5	0	0

- Molecule 14 is DODECANE (three-letter code: D12) (formula: $C_{12}H_{26}$).



Mol	Chain	Residues	Atoms		ZeroOcc	AltConf
			Total	C		
14	B	1	12	12	0	0

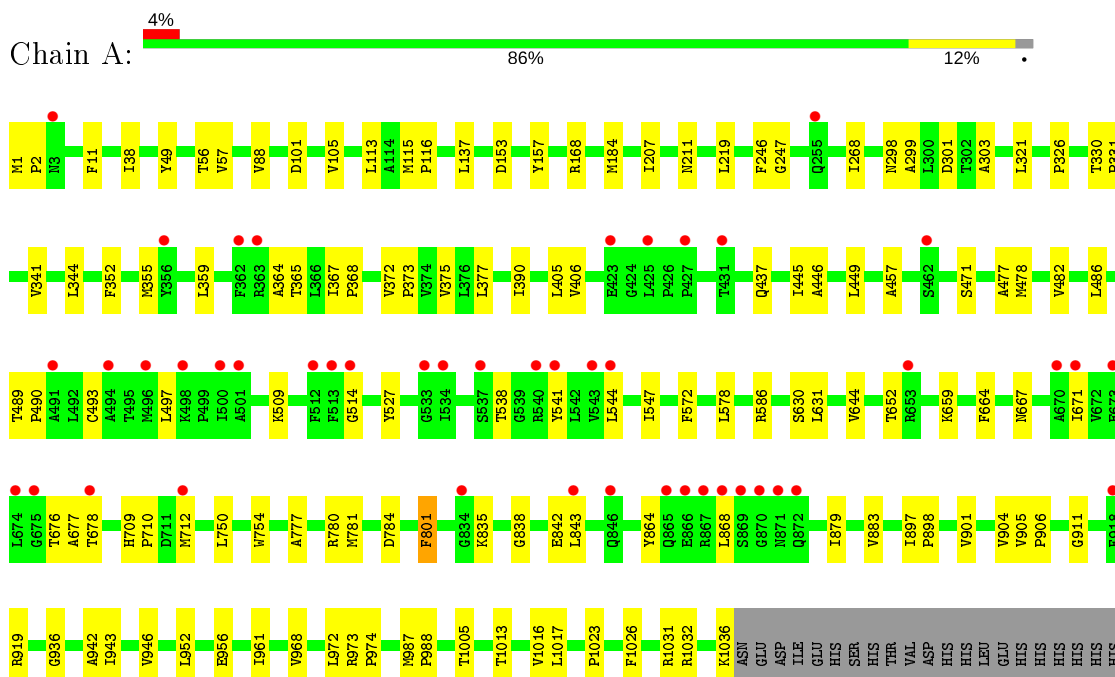
- Molecule 15 is water.

Mol	Chain	Residues	Atoms	ZeroOcc	AltConf
15	A	79	Total O 79 79	0	0
15	B	76	Total O 76 76	0	0
15	C	105	Total O 105 105	0	0
15	D	18	Total O 18 18	0	0
15	E	7	Total O 7 7	0	0

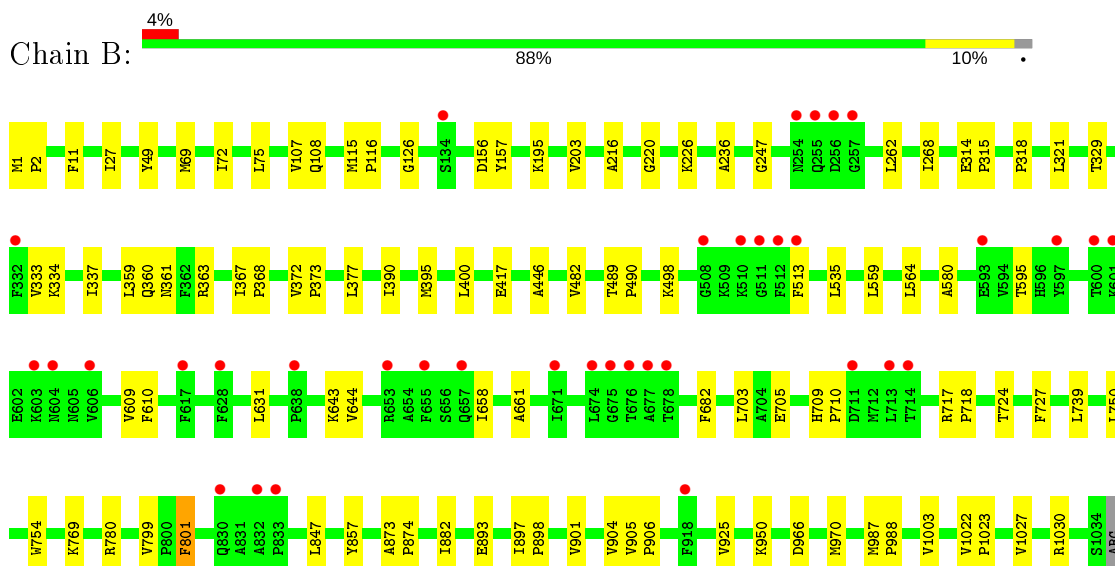
3 Residue-property plots [i](#)

These plots are drawn for all protein, RNA, DNA and oligosaccharide chains in the entry. The first graphic for a chain summarises the proportions of the various outlier classes displayed in the second graphic. The second graphic shows the sequence view annotated by issues in geometry and electron density. Residues are color-coded according to the number of geometric quality criteria for which they contain at least one outlier: green = 0, yellow = 1, orange = 2 and red = 3 or more. A red dot above a residue indicates a poor fit to the electron density ($RSRZ > 2$). Stretches of 2 or more consecutive residues without any outlier are shown as a green connector. Residues present in the sample, but not in the model, are shown in grey.

- Molecule 1: Multidrug efflux pump subunit AcrB



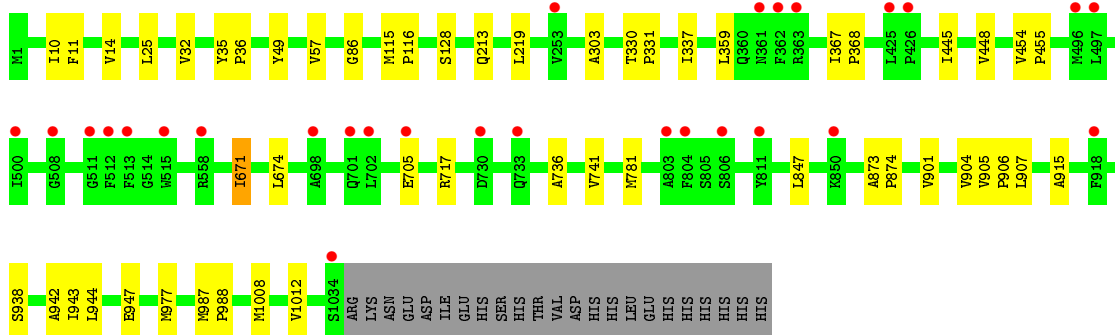
- Molecule 1: Multidrug efflux pump subunit AcrB



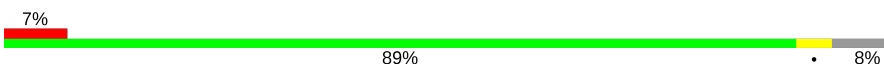
LYS
ASN
GLU
ASP
ILE
GLU
HIS
SER
HIS
THR
VAL
ASP
HIS
HIS
LEU
GLU
HIS
HIS
HIS
HIS

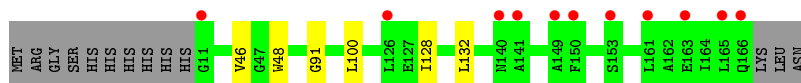
• Molecule 1: Multidrug efflux pump subunit AcrB

Chain C:  3% 93% 5%




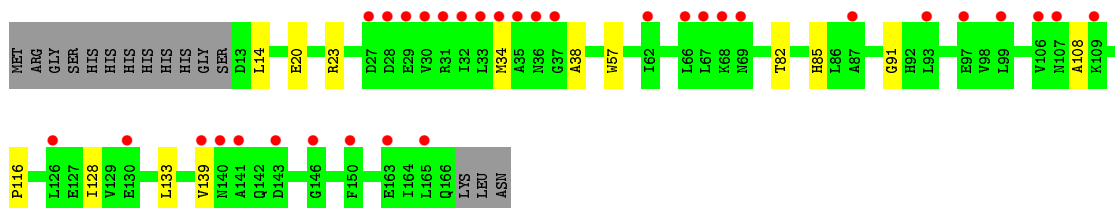
• Molecule 2: DARPin

Chain D:  7% 89% 8%



• Molecule 2: DARPin

Chain E:  20% 83% 8% 9%



4 Data and refinement statistics

Property	Value	Source
Space group	P 21 21 21	Depositor
Cell constants a, b, c, α , β , γ	145.21Å 162.99Å 245.64Å 90.00° 90.00° 90.00°	Depositor
Resolution (Å)	49.09 – 2.80 49.04 – 2.80	Depositor EDS
% Data completeness (in resolution range)	100.0 (49.09-2.80) 100.0 (49.04-2.80)	Depositor EDS
R_{merge}	0.21	Depositor
R_{sym}	(Not available)	Depositor
$\langle I/\sigma(I) \rangle$ ¹	1.54 (at 2.81Å)	Xtrriage
Refinement program	REFMAC 5.8.0238	Depositor
R, R_{free}	0.233 , 0.265 0.234 , 0.265	Depositor DCC
R_{free} test set	7105 reflections (4.95%)	wwPDB-VP
Wilson B-factor (Å ²)	56.4	Xtrriage
Anisotropy	0.537	Xtrriage
Bulk solvent k_{sol} (e/Å ³), B_{sol} (Å ²)	0.32 , 44.6	EDS
L-test for twinning ²	$\langle L \rangle = 0.49$, $\langle L^2 \rangle = 0.32$	Xtrriage
Estimated twinning fraction	No twinning to report.	Xtrriage
F_o, F_c correlation	0.91	EDS
Total number of atoms	27045	wwPDB-VP
Average B, all atoms (Å ²)	65.0	wwPDB-VP

Xtrriage's analysis on translational NCS is as follows: *The largest off-origin peak in the Patterson function is 1.95% of the height of the origin peak. No significant pseudotranslation is detected.*

¹Intensities estimated from amplitudes.

²Theoretical values of $\langle |L| \rangle$, $\langle L^2 \rangle$ for acentric reflections are 0.5, 0.333 respectively for untwinned datasets, and 0.375, 0.2 for perfectly twinned datasets.

5 Model quality [i](#)

5.1 Standard geometry [i](#)

Bond lengths and bond angles in the following residue types are not validated in this section: GOL, D10, PTY, D12, DDR, DDQ, HEX, SO4, P6G, FUA, LMT, OCT

The Z score for a bond length (or angle) is the number of standard deviations the observed value is removed from the expected value. A bond length (or angle) with $|Z| > 5$ is considered an outlier worth inspection. RMSZ is the root-mean-square of all Z scores of the bond lengths (or angles).

Mol	Chain	Bond lengths		Bond angles	
		RMSZ	# Z >5	RMSZ	# Z >5
1	A	0.66	0/8032	0.72	0/10905
1	B	0.66	0/8003	0.71	0/10868
1	C	0.66	0/8011	0.70	0/10879
2	D	0.67	0/1196	0.71	0/1626
2	E	0.67	0/1186	0.71	0/1613
All	All	0.66	0/26428	0.71	0/35891

There are no bond length outliers.

There are no bond angle outliers.

There are no chirality outliers.

There are no planarity outliers.

5.2 Too-close contacts [i](#)

In the following table, the Non-H and H(model) columns list the number of non-hydrogen atoms and hydrogen atoms in the chain respectively. The H(added) column lists the number of hydrogen atoms added and optimized by MolProbity. The Clashes column lists the number of clashes within the asymmetric unit, whereas Symm-Clashes lists symmetry related clashes.

Mol	Chain	Non-H	H(model)	H(added)	Clashes	Symm-Clashes
1	A	7879	0	8034	84	0
1	B	7853	0	8002	57	0
1	C	7858	0	8008	35	0
2	D	1177	0	1159	4	0
2	E	1167	0	1151	8	0
3	A	19	0	26	0	0
4	A	37	0	47	7	0
4	B	37	0	47	7	0

Continued on next page...

Continued from previous page...

Mol	Chain	Non-H	H(model)	H(added)	Clashes	Symm-Clashes
4	C	37	0	47	6	0
5	A	105	0	138	1	0
5	B	105	0	138	1	0
5	C	70	0	92	1	0
6	A	12	0	16	1	0
6	B	6	0	8	0	0
6	C	6	0	8	0	0
6	E	12	0	16	1	0
7	B	50	0	79	8	0
7	C	150	0	237	8	0
8	B	16	0	36	0	0
8	C	24	0	54	0	0
9	B	40	0	88	1	0
9	C	10	0	22	0	0
10	B	14	0	27	1	0
10	C	14	0	27	0	0
11	B	6	0	14	0	0
11	C	6	0	14	0	0
12	B	5	0	0	0	0
12	C	5	0	0	0	0
13	B	28	0	44	0	0
14	B	12	0	26	0	0
15	A	79	0	0	0	0
15	B	76	0	0	0	0
15	C	105	0	0	0	0
15	D	18	0	0	0	0
15	E	7	0	0	0	0
All	All	27045	0	27605	208	0

The all-atom clashscore is defined as the number of clashes found per 1000 atoms (including hydrogen atoms). The all-atom clashscore for this structure is 4.

All (208) close contacts within the same asymmetric unit are listed below, sorted by their clash magnitude.

Atom-1	Atom-2	Interatomic distance (Å)	Clash overlap (Å)
4:B:1101:FUA:H232	4:B:1101:FUA:H122	1.54	0.89
4:A:1102:FUA:H202	4:A:1102:FUA:H5	1.54	0.88
4:C:1101:FUA:H202	4:C:1101:FUA:H5	1.62	0.81
7:C:1106:PTY:HC11	7:C:1106:PTY:H322	1.63	0.79
4:B:1101:FUA:H232	4:B:1101:FUA:C12	2.13	0.78
1:C:901:VAL:O	1:C:904:VAL:HG12	1.85	0.76

Continued on next page...

Continued from previous page...

Atom-1	Atom-2	Interatomic distance (Å)	Clash overlap (Å)
7:B:1105:PTY:H282	10:B:1113:DDQ:H102	1.71	0.72
1:C:904:VAL:HG23	1:C:907:LEU:HD12	1.71	0.71
7:B:1105:PTY:H172	7:B:1105:PTY:H402	1.73	0.71
4:B:1101:FUA:H5	4:B:1101:FUA:H202	1.74	0.69
4:C:1101:FUA:H231	4:C:1101:FUA:H122	1.75	0.68
1:A:367:ILE:HB	1:A:368:PRO:HD3	1.76	0.68
1:A:493:CYS:O	1:A:497:LEU:HB2	1.94	0.67
1:A:355:MET:HB2	1:A:365:THR:HG23	1.77	0.65
1:A:968:VAL:HG11	1:A:1023:PRO:HG3	1.77	0.65
7:C:1106:PTY:H322	7:C:1106:PTY:C1	2.27	0.65
1:B:535:LEU:HD22	1:B:1027:VAL:HG21	1.79	0.64
1:B:901:VAL:O	1:B:904:VAL:HG12	1.97	0.64
7:B:1105:PTY:H331	7:B:1105:PTY:HC11	1.81	0.63
1:B:247:GLY:HA2	1:B:268:ILE:CD1	2.29	0.63
1:A:375:VAL:HG11	1:A:405:LEU:HD22	1.81	0.62
1:A:446:ALA:HB2	1:A:482:VAL:HG21	1.80	0.62
1:A:372:VAL:HG21	1:A:406:VAL:HG22	1.81	0.62
1:C:671:ILE:HD11	1:C:674:LEU:HD12	1.83	0.61
1:A:247:GLY:HA2	1:A:268:ILE:CD1	2.31	0.60
1:C:445:ILE:HD11	1:C:944:LEU:HD21	1.82	0.60
1:A:527:TYR:CD2	1:A:972:LEU:HD22	2.38	0.59
2:D:91:GLY:HA2	2:D:128:ILE:CD1	2.33	0.59
4:C:1101:FUA:H232	4:C:1101:FUA:H272	1.85	0.58
1:A:113:LEU:HD11	1:C:128:SER:HB3	1.86	0.58
1:B:400:LEU:HD21	1:B:1003:VAL:HG13	1.86	0.58
1:A:919:ARG:HD3	1:A:1005:THR:HG21	1.85	0.58
1:B:580:ALA:HB1	1:B:724:THR:HG22	1.86	0.58
1:A:942:ALA:O	1:A:946:VAL:HG23	2.03	0.57
1:A:219:LEU:HD23	1:B:754:TRP:CZ3	2.39	0.56
1:A:897:ILE:N	1:A:898:PRO:HD2	2.19	0.56
1:B:1:MET:HB3	1:B:2:PRO:HD3	1.85	0.56
2:D:91:GLY:HA2	2:D:128:ILE:HD12	1.87	0.56
1:A:572:PHE:HE2	1:A:631:LEU:HD21	1.71	0.55
1:C:35:TYR:HB3	1:C:36:PRO:HD2	1.88	0.55
1:B:334:LYS:HG3	4:B:1101:FUA:H281	1.87	0.55
2:E:20:GLU:HG2	6:E:201:GOL:H11	1.87	0.55
1:A:541:TYR:HA	1:A:544:LEU:HD12	1.89	0.54
2:E:14:LEU:HD23	2:E:38:ALA:HA	1.90	0.54
1:A:101:ASP:O	1:A:105:VAL:HG23	2.09	0.53
1:B:446:ALA:HB2	1:B:482:VAL:HG21	1.90	0.53
1:A:709:HIS:N	1:A:710:PRO:HD3	2.24	0.52

Continued on next page...

Continued from previous page...

Atom-1	Atom-2	Interatomic distance (Å)	Clash overlap (Å)
1:B:400:LEU:CD2	1:B:1003:VAL:HG13	2.40	0.52
1:B:705:GLU:HB3	1:B:847:LEU:HD22	1.92	0.52
1:A:676:THR:O	1:A:678:THR:N	2.43	0.52
1:A:879:ILE:O	1:A:883:VAL:HG23	2.09	0.52
1:A:652:THR:HG23	1:A:664:PHE:CB	2.39	0.52
1:C:987:MET:HB3	1:C:988:PRO:HD3	1.92	0.52
1:B:367:ILE:HB	1:B:368:PRO:HD3	1.91	0.51
1:C:32:VAL:HG12	1:C:337:ILE:HD13	1.92	0.51
1:B:882:ILE:HG23	9:B:1111:D10:H91	1.92	0.51
1:B:372:VAL:HB	1:B:373:PRO:HD3	1.92	0.51
1:A:372:VAL:HB	1:A:373:PRO:HD3	1.93	0.51
1:B:337:ILE:HG21	4:B:1101:FUA:H272	1.92	0.51
1:A:457:ALA:HB2	1:A:471:SER:CB	2.41	0.50
1:A:489:THR:HB	1:A:490:PRO:HD3	1.93	0.50
1:A:115:MET:HB2	1:A:116:PRO:HD3	1.94	0.50
1:A:355:MET:CB	1:A:365:THR:HG23	2.42	0.50
1:B:682:PHE:CZ	1:B:857:TYR:HB2	2.47	0.50
1:A:57:VAL:CG1	1:A:88:VAL:HG22	2.41	0.50
1:A:879:ILE:HD13	1:C:25:LEU:HD11	1.94	0.50
1:C:303:ALA:HB2	1:C:330:THR:HG21	1.92	0.50
1:A:57:VAL:HG12	1:A:88:VAL:HG22	1.92	0.50
1:A:644:VAL:CG1	1:A:667:ASN:HB2	2.42	0.50
1:C:671:ILE:HD11	1:C:674:LEU:CD1	2.41	0.50
4:A:1102:FUA:H202	4:A:1102:FUA:C5	2.34	0.50
1:A:341:VAL:O	1:A:344:LEU:HB2	2.12	0.49
1:B:966:ASP:O	1:B:970:MET:HG3	2.11	0.49
1:A:390:ILE:HG21	5:A:1104:LMT:H32	1.94	0.49
1:B:220:GLY:HA2	1:C:781:MET:SD	2.52	0.49
1:B:390:ILE:HD13	5:B:1103:LMT:H31	1.95	0.49
1:A:341:VAL:HG12	4:A:1102:FUA:H323	1.95	0.49
1:C:873:ALA:HB3	1:C:874:PRO:HD3	1.95	0.49
1:A:509:LYS:O	1:A:514:GLY:HA3	2.13	0.48
1:C:448:VAL:HG11	1:C:943:ILE:HD11	1.95	0.48
2:E:91:GLY:HA2	2:E:128:ILE:HD12	1.95	0.48
1:A:879:ILE:CD1	1:C:25:LEU:HD11	2.43	0.48
1:B:905:VAL:HB	1:B:906:PRO:HD3	1.94	0.48
1:A:987:MET:HB3	1:A:988:PRO:HD3	1.95	0.48
1:B:897:ILE:HD13	1:B:950:LYS:HD2	1.96	0.48
1:A:1016:VAL:HG23	1:A:1017:LEU:HD12	1.94	0.48
1:A:352:PHE:CD1	1:A:365:THR:HG22	2.49	0.48
1:A:375:VAL:HG11	1:A:405:LEU:CD2	2.42	0.48

Continued on next page...

Continued from previous page...

Atom-1	Atom-2	Interatomic distance (Å)	Clash overlap (Å)
1:C:1008:MET:O	1:C:1012:VAL:HG23	2.14	0.48
1:A:712:MET:SD	1:A:835:LYS:HD2	2.54	0.48
1:C:57:VAL:HG21	1:C:86:GLY:HA2	1.96	0.48
1:A:56:THR:HG23	1:C:213:GLN:HG3	1.95	0.47
4:B:1101:FUA:C12	4:B:1101:FUA:C23	2.90	0.47
1:B:873:ALA:HB3	1:B:874:PRO:HD3	1.97	0.47
1:C:330:THR:N	1:C:331:PRO:CD	2.77	0.47
2:D:46:VAL:HG23	2:D:48:TRP:CD1	2.49	0.47
1:C:367:ILE:HB	1:C:368:PRO:HD3	1.96	0.47
1:A:973:ARG:N	1:A:974:PRO:HD2	2.29	0.47
7:B:1105:PTY:H361	7:C:1104:PTY:H371	1.95	0.47
7:B:1105:PTY:H112	7:B:1105:PTY:HC12	1.96	0.46
1:A:968:VAL:HG11	1:A:1023:PRO:CG	2.44	0.46
1:B:157:TYR:CE2	1:B:318:PRO:HD3	2.51	0.46
7:C:1106:PTY:H352	7:C:1106:PTY:H171	1.97	0.46
1:A:298:ASN:HB3	1:A:301:ASP:HB2	1.98	0.46
1:A:330:THR:N	1:A:331:PRO:CD	2.79	0.46
1:B:359:LEU:HD13	1:B:417:GLU:HG3	1.98	0.45
1:B:595:THR:HG23	1:B:609:VAL:HB	1.98	0.45
1:B:703:LEU:HD11	1:B:718:PRO:HD3	1.97	0.45
7:C:1106:PTY:C1	7:C:1106:PTY:C32	2.92	0.45
1:B:156:ASP:OD1	1:B:769:LYS:NZ	2.49	0.45
1:B:1022:VAL:N	1:B:1023:PRO:HD2	2.31	0.45
1:A:946:VAL:HG13	1:A:1026:PHE:CE1	2.52	0.45
1:B:360:GLN:HG2	1:B:513:PHE:CD2	2.50	0.45
1:B:658:ILE:HG22	1:B:661:ALA:HB3	1.99	0.45
1:A:961:ILE:HD11	1:A:1031:ARG:NH2	2.31	0.45
6:A:1107:GOL:H31	1:B:75:LEU:HD23	1.99	0.45
1:A:184:MET:HG2	1:A:246:PHE:CD2	2.51	0.45
1:A:864:TYR:O	1:A:868:LEU:HD13	2.17	0.45
2:E:133:LEU:HD21	2:E:139:VAL:HG12	1.99	0.45
4:C:1101:FUA:C5	4:C:1101:FUA:H202	2.40	0.45
1:C:671:ILE:HD11	1:C:674:LEU:CG	2.46	0.45
1:C:10:ILE:O	1:C:14:VAL:HG23	2.17	0.45
2:E:82:THR:O	2:E:85:HIS:HB2	2.17	0.45
2:E:23:ARG:HG3	2:E:57:TRP:CD1	2.52	0.45
1:A:207:ILE:O	1:A:211:ASN:HB3	2.18	0.44
1:A:482:VAL:O	1:A:486:LEU:HG	2.17	0.44
1:A:712:MET:HG2	1:A:843:LEU:HD22	1.98	0.44
1:A:901:VAL:O	1:A:904:VAL:HG22	2.17	0.44
1:B:27:ILE:CD1	1:B:377:LEU:HD22	2.47	0.44

Continued on next page...

Continued from previous page...

Atom-1	Atom-2	Interatomic distance (Å)	Clash overlap (Å)
1:B:631:LEU:HD11	1:B:644:VAL:HG22	1.98	0.44
1:B:750:LEU:HB2	1:B:801:PHE:CZ	2.52	0.44
1:B:897:ILE:N	1:B:898:PRO:HD2	2.31	0.44
1:A:838:GLY:O	1:A:842:GLU:HG3	2.17	0.44
1:A:330:THR:OG1	1:A:331:PRO:HD3	2.17	0.44
2:E:91:GLY:HA2	2:E:128:ILE:CD1	2.48	0.44
4:A:1102:FUA:O4	4:A:1102:FUA:H242	2.17	0.44
1:C:359:LEU:HG	1:C:977:MET:CE	2.48	0.44
1:B:395:MET:CE	1:B:395:MET:HA	2.47	0.43
1:A:219:LEU:HD11	1:B:727:PHE:CG	2.53	0.43
1:A:1:MET:HB2	1:A:2:PRO:HD3	2.00	0.43
1:A:184:MET:HG2	1:A:246:PHE:CE2	2.53	0.43
1:B:489:THR:OG1	1:B:490:PRO:HD3	2.18	0.43
1:A:449:LEU:HB3	1:A:478:MET:SD	2.58	0.43
7:B:1105:PTY:H311	7:B:1105:PTY:P1	2.57	0.43
1:B:754:TRP:CH2	1:B:780:ARG:HA	2.53	0.43
4:A:1102:FUA:C5	4:A:1102:FUA:C20	2.96	0.43
1:C:915:ALA:HA	5:C:1103:LMT:H92	2.01	0.43
1:C:705:GLU:HB3	1:C:847:LEU:HD22	2.01	0.43
4:A:1102:FUA:O1	4:A:1102:FUA:H12	2.19	0.43
1:A:952:LEU:O	1:A:956:GLU:HB2	2.18	0.43
1:B:216:ALA:HB2	1:B:236:ALA:HB2	2.00	0.43
1:B:72:ILE:HD13	1:B:107:VAL:HG22	2.00	0.43
1:C:454:VAL:HB	1:C:455:PRO:HD3	2.00	0.43
1:C:904:VAL:HG11	1:C:942:ALA:HB2	2.01	0.43
4:C:1101:FUA:H232	4:C:1101:FUA:C27	2.47	0.43
2:E:108:ALA:O	2:E:116:PRO:HD3	2.19	0.43
1:A:644:VAL:HG12	1:A:667:ASN:HB2	2.01	0.42
7:C:1106:PTY:HC21	7:C:1106:PTY:O14	2.18	0.42
1:A:911:GLY:CA	1:A:1013:THR:HG21	2.49	0.42
1:B:893:GLU:O	1:B:893:GLU:HG3	2.19	0.42
1:C:671:ILE:HD11	1:C:674:LEU:HG	2.00	0.42
1:B:897:ILE:N	1:B:898:PRO:CD	2.82	0.42
1:A:359:LEU:HD13	1:A:364:ALA:HB1	2.02	0.42
1:C:736:ALA:HB1	1:C:741:VAL:HG23	2.00	0.42
1:A:754:TRP:CZ3	1:A:780:ARG:HA	2.54	0.42
1:B:709:HIS:N	1:B:710:PRO:HD3	2.34	0.42
7:B:1105:PTY:C33	7:B:1105:PTY:HC11	2.49	0.42
1:B:987:MET:N	1:B:988:PRO:CD	2.82	0.42
1:B:126:GLY:HA3	1:C:116:PRO:HB3	2.02	0.42
1:B:739:LEU:HD13	1:B:799:VAL:HG11	2.02	0.42

Continued on next page...

Continued from previous page...

Atom-1	Atom-2	Interatomic distance (Å)	Clash overlap (Å)
1:A:968:VAL:CG1	1:A:1023:PRO:HG3	2.48	0.41
1:A:544:LEU:O	1:A:547:ILE:HB	2.20	0.41
4:A:1102:FUA:C23	4:A:1102:FUA:H122	2.50	0.41
1:B:363:ARG:HD2	1:B:498:LYS:HE3	2.02	0.41
1:A:754:TRP:HZ3	1:C:219:LEU:HD23	1.85	0.41
1:A:137:LEU:HD11	1:A:299:ALA:HB1	2.02	0.41
1:A:38:ILE:HD11	1:A:671:ILE:HD13	2.02	0.41
1:B:314:GLU:HB2	1:B:315:PRO:HD3	2.02	0.41
1:A:445:ILE:CG1	1:A:943:ILE:HG21	2.51	0.41
1:B:329:THR:O	1:B:333:VAL:HG23	2.20	0.41
1:A:377:LEU:HD23	1:A:377:LEU:HA	1.96	0.41
1:A:445:ILE:HG12	1:A:943:ILE:HG21	2.03	0.41
1:B:203:VAL:HG13	1:B:262:LEU:CD1	2.51	0.41
1:A:405:LEU:HD21	1:A:477:ALA:HB1	2.02	0.41
2:D:100:LEU:HD11	2:D:132:LEU:HD23	2.03	0.41
1:A:449:LEU:HD21	1:A:936:GLY:CA	2.51	0.41
1:B:559:LEU:HA	1:B:559:LEU:HD12	1.94	0.41
1:C:904:VAL:HG13	1:C:938:SER:HB3	2.02	0.41
1:A:578:LEU:HD23	1:A:586:ARG:HE	1.85	0.41
1:A:777:ALA:O	1:A:781:MET:HG2	2.21	0.41
1:A:168:ARG:HG2	1:B:69:MET:O	2.21	0.40
1:B:115:MET:HB2	1:B:116:PRO:HD3	2.03	0.40
1:B:318:PRO:HD2	1:B:321:LEU:HD22	2.03	0.40
1:A:1016:VAL:HG23	1:A:1017:LEU:CD1	2.51	0.40
1:A:905:VAL:N	1:A:906:PRO:CD	2.84	0.40
1:C:905:VAL:HB	1:C:906:PRO:HD3	2.03	0.40
1:A:157:TYR:CD2	1:A:321:LEU:HD21	2.56	0.40
1:A:326:PRO:O	1:A:630:SER:HB2	2.20	0.40
1:A:750:LEU:HB2	1:A:801:PHE:CZ	2.56	0.40
7:B:1105:PTY:H382	7:C:1104:PTY:H391	2.02	0.40
1:B:564:LEU:HD23	1:B:925:VAL:HG22	2.04	0.40
1:B:643:LYS:HD3	1:B:643:LYS:HA	1.82	0.40
1:A:946:VAL:HG13	1:A:1026:PHE:CD1	2.56	0.40
4:B:1101:FUA:H202	4:B:1101:FUA:C5	2.45	0.40
4:C:1101:FUA:H231	4:C:1101:FUA:C12	2.47	0.40
1:A:303:ALA:HB2	1:A:330:THR:HG21	2.04	0.40
1:C:947:GLU:OE2	7:C:1106:PTY:N1	2.54	0.40
1:C:115:MET:N	1:C:116:PRO:HD2	2.36	0.40

There are no symmetry-related clashes.

5.3 Torsion angles [i](#)

5.3.1 Protein backbone [i](#)

In the following table, the Percentiles column shows the percent Ramachandran outliers of the chain as a percentile score with respect to all X-ray entries followed by that with respect to entries of similar resolution.

The Analysed column shows the number of residues for which the backbone conformation was analysed, and the total number of residues.

Mol	Chain	Analysed	Favoured	Allowed	Outliers	Percentiles	
1	A	1035/1057 (98%)	997 (96%)	36 (4%)	2 (0%)	47	78
1	B	1032/1057 (98%)	1008 (98%)	24 (2%)	0	100	100
1	C	1033/1057 (98%)	1010 (98%)	23 (2%)	0	100	100
2	D	154/169 (91%)	152 (99%)	2 (1%)	0	100	100
2	E	152/169 (90%)	148 (97%)	4 (3%)	0	100	100
All	All	3406/3509 (97%)	3315 (97%)	89 (3%)	2 (0%)	51	81

All (2) Ramachandran outliers are listed below:

Mol	Chain	Res	Type
1	A	677	ALA
1	A	538	THR

5.3.2 Protein sidechains [i](#)

In the following table, the Percentiles column shows the percent sidechain outliers of the chain as a percentile score with respect to all X-ray entries followed by that with respect to entries of similar resolution.

The Analysed column shows the number of residues for which the sidechain conformation was analysed, and the total number of residues.

Mol	Chain	Analysed	Rotameric	Outliers	Percentiles	
1	A	842/862 (98%)	833 (99%)	9 (1%)	73	92
1	B	839/862 (97%)	829 (99%)	10 (1%)	71	92
1	C	840/862 (97%)	836 (100%)	4 (0%)	88	96
2	D	120/132 (91%)	120 (100%)	0	100	100
2	E	119/132 (90%)	118 (99%)	1 (1%)	81	94
All	All	2760/2850 (97%)	2736 (99%)	24 (1%)	78	94

All (24) residues with a non-rotameric sidechain are listed below:

Mol	Chain	Res	Type
1	A	11	PHE
1	A	49	TYR
1	A	153	ASP
1	A	437	GLN
1	A	659	LYS
1	A	784	ASP
1	A	801	PHE
1	A	1032	ARG
1	A	1036	LYS
1	B	11	PHE
1	B	49	TYR
1	B	108	GLN
1	B	195	LYS
1	B	226	LYS
1	B	361	ASN
1	B	610	PHE
1	B	717	ARG
1	B	801	PHE
1	B	1030	ARG
1	C	11	PHE
1	C	49	TYR
1	C	671	ILE
1	C	717	ARG
2	E	34	MET

Some sidechains can be flipped to improve hydrogen bonding and reduce clashes. All (1) such sidechains are listed below:

Mol	Chain	Res	Type
1	B	846	GLN

5.3.3 RNA [i](#)

There are no RNA molecules in this entry.

5.4 Non-standard residues in protein, DNA, RNA chains [i](#)

There are no non-standard protein/DNA/RNA residues in this entry.

5.5 Carbohydrates [i](#)

There are no monosaccharides in this entry.

5.6 Ligand geometry [i](#)

40 ligands are modelled in this entry.

In the following table, the Counts columns list the number of bonds (or angles) for which Mogul statistics could be retrieved, the number of bonds (or angles) that are observed in the model and the number of bonds (or angles) that are defined in the Chemical Component Dictionary. The Link column lists molecule types, if any, to which the group is linked. The Z score for a bond length (or angle) is the number of standard deviations the observed value is removed from the expected value. A bond length (or angle) with $|Z| > 2$ is considered an outlier worth inspection. RMSZ is the root-mean-square of all Z scores of the bond lengths (or angles).

Mol	Type	Chain	Res	Link	Bond lengths			Bond angles		
					Counts	RMSZ	# Z > 2	Counts	RMSZ	# Z > 2
5	LMT	C	1102	-	36,36,36	0.40	0	47,47,47	0.54	0
7	PTY	C	1105	-	49,49,49	0.28	0	52,54,54	0.33	0
7	PTY	B	1105	-	49,49,49	0.29	0	52,54,54	0.37	0
5	LMT	A	1105	-	36,36,36	0.43	0	47,47,47	0.56	0
6	GOL	A	1106	-	5,5,5	0.09	0	5,5,5	0.25	0
8	OCT	C	1110	-	7,7,7	0.11	0	6,6,6	0.09	0
12	SO4	C	1114	-	4,4,4	0.38	0	6,6,6	0.05	0
8	OCT	B	1107	-	7,7,7	0.11	0	6,6,6	0.10	0
5	LMT	A	1103	-	36,36,36	0.41	0	47,47,47	0.70	0
7	PTY	C	1106	-	49,49,49	0.27	0	52,54,54	0.45	0
9	D10	C	1111	-	9,9,9	0.10	0	8,8,8	0.05	0
6	GOL	E	201	-	5,5,5	0.09	0	5,5,5	0.26	0
9	D10	B	1111	-	9,9,9	0.12	0	8,8,8	0.12	0
8	OCT	C	1108	-	7,7,7	0.12	0	6,6,6	0.08	0
11	HEX	C	1113	-	5,5,5	0.14	0	4,4,4	0.07	0
10	DDQ	C	1112	-	10,13,13	2.26	1 (10%)	12,15,15	0.51	0
9	D10	B	1109	-	9,9,9	0.09	0	8,8,8	0.08	0
8	OCT	C	1109	-	7,7,7	0.11	0	6,6,6	0.06	0
11	HEX	B	1114	-	5,5,5	0.14	0	4,4,4	0.10	0
3	P6G	A	1101	-	18,18,18	0.50	0	17,17,17	0.21	0
7	PTY	C	1104	-	49,49,49	0.26	0	52,54,54	0.38	0
4	FUA	A	1102	-	36,40,40	0.54	0	46,64,64	0.76	0
8	OCT	B	1108	-	7,7,7	0.11	0	6,6,6	0.16	0
5	LMT	C	1103	-	36,36,36	0.53	1 (2%)	47,47,47	0.98	4 (8%)
6	GOL	B	1106	-	5,5,5	0.09	0	5,5,5	0.27	0
5	LMT	A	1104	-	36,36,36	0.39	0	47,47,47	1.02	3 (6%)
6	GOL	C	1107	-	5,5,5	0.09	0	5,5,5	0.27	0

Mol	Type	Chain	Res	Link	Bond lengths			Bond angles		
					Counts	RMSZ	# Z > 2	Counts	RMSZ	# Z > 2
9	D10	B	1112	-	9,9,9	0.10	0	8,8,8	0.07	0
14	D12	B	1117	-	11,11,11	0.22	0	10,10,10	0.55	0
4	FUA	C	1101	-	36,40,40	0.45	0	46,64,64	0.93	3 (6%)
5	LMT	B	1103	-	36,36,36	0.47	0	47,47,47	0.67	0
12	SO4	B	1115	-	4,4,4	0.39	0	6,6,6	0.05	0
13	DDR	B	1116	-	27,27,27	1.23	2 (7%)	29,29,29	1.17	3 (10%)
5	LMT	B	1104	-	36,36,36	0.42	0	47,47,47	0.92	2 (4%)
9	D10	B	1110	-	9,9,9	0.10	0	8,8,8	0.13	0
4	FUA	B	1101	-	36,40,40	0.43	0	46,64,64	0.86	1 (2%)
6	GOL	A	1107	-	5,5,5	0.09	0	5,5,5	0.29	0
5	LMT	B	1102	-	36,36,36	0.43	0	47,47,47	0.59	0
10	DDQ	B	1113	-	10,13,13	2.27	1 (10%)	12,15,15	0.55	0
6	GOL	E	202	-	5,5,5	0.10	0	5,5,5	0.27	0

In the following table, the Chirals column lists the number of chiral outliers, the number of chiral centers analysed, the number of these observed in the model and the number defined in the Chemical Component Dictionary. Similar counts are reported in the Torsion and Rings columns. '-' means no outliers of that kind were identified.

Mol	Type	Chain	Res	Link	Chirals	Torsions	Rings
5	LMT	C	1102	-	-	8/21/61/61	0/2/2/2
7	PTY	C	1105	-	-	25/53/53/53	-
7	PTY	B	1105	-	-	32/53/53/53	-
5	LMT	A	1105	-	-	11/21/61/61	0/2/2/2
6	GOL	A	1106	-	-	0/4/4/4	-
8	OCT	C	1110	-	-	4/5/5/5	-
8	OCT	B	1107	-	-	4/5/5/5	-
5	LMT	A	1103	-	-	11/21/61/61	0/2/2/2
7	PTY	C	1106	-	-	34/53/53/53	-
9	D10	C	1111	-	-	2/7/7/7	-
6	GOL	E	201	-	-	0/4/4/4	-
9	D10	B	1111	-	-	5/7/7/7	-
8	OCT	C	1108	-	-	3/5/5/5	-
11	HEX	C	1113	-	-	1/3/3/3	-
10	DDQ	C	1112	-	-	3/11/11/11	-
9	D10	B	1109	-	-	3/7/7/7	-
8	OCT	C	1109	-	-	2/5/5/5	-
11	HEX	B	1114	-	-	0/3/3/3	-

Continued on next page...

Continued from previous page...

Mol	Type	Chain	Res	Link	Chirals	Torsions	Rings
3	P6G	A	1101	-	-	12/16/16/16	-
7	PTY	C	1104	-	-	24/53/53/53	-
4	FUA	A	1102	-	-	5/11/92/92	0/4/4/4
8	OCT	B	1108	-	-	1/5/5/5	-
5	LMT	C	1103	-	-	11/21/61/61	0/2/2/2
6	GOL	B	1106	-	-	2/4/4/4	-
5	LMT	A	1104	-	-	4/21/61/61	0/2/2/2
6	GOL	C	1107	-	-	1/4/4/4	-
9	D10	B	1112	-	-	2/7/7/7	-
14	D12	B	1117	-	-	5/9/9/9	-
4	FUA	C	1101	-	-	3/11/92/92	0/4/4/4
5	LMT	B	1103	-	-	13/21/61/61	0/2/2/2
13	DDR	B	1116	-	-	18/29/29/29	-
5	LMT	B	1104	-	-	6/21/61/61	0/2/2/2
9	D10	B	1110	-	-	5/7/7/7	-
4	FUA	B	1101	-	-	2/11/92/92	0/4/4/4
6	GOL	A	1107	-	-	2/4/4/4	-
5	LMT	B	1102	-	-	9/21/61/61	0/2/2/2
10	DDQ	B	1113	-	-	2/11/11/11	-
6	GOL	E	202	-	-	2/4/4/4	-

All (5) bond length outliers are listed below:

Mol	Chain	Res	Type	Atoms	Z	Observed(Å)	Ideal(Å)
10	B	1113	DDQ	O1-N1	-7.13	1.25	1.42
10	C	1112	DDQ	O1-N1	-7.10	1.25	1.42
13	B	1116	DDR	O51-C1	4.34	1.46	1.33
13	B	1116	DDR	O52-C21	4.07	1.45	1.34
5	C	1103	LMT	O1'-C1'	2.17	1.43	1.40

All (16) bond angle outliers are listed below:

Mol	Chain	Res	Type	Atoms	Z	Observed(°)	Ideal(°)
13	B	1116	DDR	O52-C21-C22	3.56	119.17	111.50
5	A	1104	LMT	O5'-C5'-C4'	3.03	116.15	109.75
5	B	1104	LMT	O5'-C5'-C4'	3.03	116.14	109.75
5	A	1104	LMT	C1'-O5'-C5'	2.87	119.32	113.69
5	C	1103	LMT	O5'-C5'-C4'	2.64	115.32	109.75

Continued on next page...

Continued from previous page...

Mol	Chain	Res	Type	Atoms	Z	Observed(°)	Ideal(°)
13	B	1116	DDR	O51-C1-C2	2.63	120.17	111.91
5	C	1103	LMT	C3'-C4'-C5'	2.48	116.61	110.93
5	C	1103	LMT	O5'-C1'-C2'	-2.43	105.20	110.35
13	B	1116	DDR	C52-O52-C21	-2.42	111.82	117.79
4	C	1101	FUA	C6-C5-C10	2.41	114.66	111.65
4	C	1101	FUA	C18-C4-C5	2.40	116.43	113.04
5	A	1104	LMT	C1B-O1B-C4'	-2.24	112.43	117.96
5	B	1104	LMT	C3'-C4'-C5'	2.14	115.83	110.93
5	C	1103	LMT	C1B-C2B-C3B	2.10	114.36	110.00
4	C	1101	FUA	O2-C16-C17	2.06	114.66	108.43
4	B	1101	FUA	C7-C8-C14	2.05	112.63	110.77

There are no chirality outliers.

All (277) torsion outliers are listed below:

Mol	Chain	Res	Type	Atoms
5	C	1102	LMT	C2'-C1'-O1'-C1
5	C	1102	LMT	O5'-C1'-O1'-C1
7	C	1105	PTY	C11-C8-O7-C6
7	C	1105	PTY	C3-O11-P1-O13
7	B	1105	PTY	C11-C8-O7-C6
7	B	1105	PTY	C3-O11-P1-O12
7	C	1106	PTY	N1-C2-C3-O11
7	C	1106	PTY	C2-C3-O11-P1
7	C	1106	PTY	C11-C8-O7-C6
7	C	1106	PTY	C3-O11-P1-O13
7	C	1104	PTY	O4-C1-C6-O7
7	C	1104	PTY	C3-O11-P1-O12
4	A	1102	FUA	C17-C22-C23-C24
4	A	1102	FUA	C29-C22-C23-C24
4	A	1102	FUA	C22-C23-C24-C25
4	C	1101	FUA	C23-C24-C25-C26
5	B	1103	LMT	C2-C1-O1'-C1'
4	B	1101	FUA	C32-C31-O2-C16
4	B	1101	FUA	O3-C31-O2-C16
5	B	1102	LMT	C2'-C1'-O1'-C1
5	B	1102	LMT	O5'-C1'-O1'-C1
4	A	1102	FUA	C32-C31-O2-C16
7	B	1105	PTY	C31-C30-O4-C1
7	B	1105	PTY	O30-C30-O4-C1
7	C	1106	PTY	O30-C30-O4-C1
7	C	1105	PTY	O10-C8-O7-C6

Continued on next page...

Continued from previous page...

Mol	Chain	Res	Type	Atoms
7	B	1105	PTY	O10-C8-O7-C6
7	C	1106	PTY	C31-C30-O4-C1
4	A	1102	FUA	O3-C31-O2-C16
7	C	1106	PTY	O10-C8-O7-C6
5	A	1105	LMT	O5B-C5B-C6B-O6B
5	C	1103	LMT	O5'-C5'-C6'-O6'
5	C	1103	LMT	C4'-C5'-C6'-O6'
3	A	1101	P6G	O4-C5-C6-O7
5	B	1103	LMT	O5'-C5'-C6'-O6'
5	A	1103	LMT	O5B-C5B-C6B-O6B
5	C	1103	LMT	O5'-C1'-O1'-C1
5	B	1103	LMT	O5'-C1'-O1'-C1
4	C	1101	FUA	C22-C23-C24-C25
3	A	1101	P6G	O7-C8-C9-O10
5	C	1103	LMT	C4B-C5B-C6B-O6B
5	A	1103	LMT	C4B-C5B-C6B-O6B
7	B	1105	PTY	C24-C25-C26-C27
3	A	1101	P6G	O13-C14-C15-O16
5	B	1103	LMT	C4'-C5'-C6'-O6'
5	A	1105	LMT	C4B-C5B-C6B-O6B
7	C	1105	PTY	C8-C11-C12-C13
7	C	1105	PTY	C31-C30-O4-C1
13	B	1116	DDR	C2-C1-O51-C51
5	C	1103	LMT	O5B-C5B-C6B-O6B
3	A	1101	P6G	O16-C17-C18-O19
7	C	1106	PTY	C8-C11-C12-C13
7	C	1105	PTY	O30-C30-O4-C1
13	B	1116	DDR	C22-C21-O52-C52
7	C	1105	PTY	C3-O11-P1-O14
7	C	1105	PTY	C5-O14-P1-O11
7	C	1106	PTY	C3-O11-P1-O14
7	C	1106	PTY	C5-O14-P1-O11
7	C	1104	PTY	C3-O11-P1-O14
13	B	1116	DDR	O21-C21-O52-C52
5	A	1105	LMT	O1'-C1-C2-C3
9	B	1109	D10	C6-C7-C8-C9
5	C	1102	LMT	C6-C7-C8-C9
7	C	1104	PTY	C32-C33-C34-C35
13	B	1116	DDR	O1-C1-O51-C51
7	C	1106	PTY	C18-C19-C20-C21
5	C	1103	LMT	C3-C4-C5-C6
7	C	1104	PTY	C13-C14-C15-C16

Continued on next page...

Continued from previous page...

Mol	Chain	Res	Type	Atoms
7	C	1104	PTY	C18-C19-C20-C21
7	C	1104	PTY	C35-C36-C37-C38
5	A	1104	LMT	C6-C7-C8-C9
7	B	1105	PTY	C26-C27-C28-C29
5	B	1103	LMT	C5-C6-C7-C8
5	C	1103	LMT	C2'-C1'-O1'-C1
5	A	1105	LMT	C3-C4-C5-C6
5	C	1102	LMT	C7-C8-C9-C10
7	C	1106	PTY	C12-C13-C14-C15
7	C	1105	PTY	C32-C33-C34-C35
7	B	1105	PTY	C40-C41-C42-C43
5	A	1104	LMT	C4-C5-C6-C7
5	B	1104	LMT	C5-C6-C7-C8
7	C	1105	PTY	C22-C23-C24-C25
5	C	1103	LMT	C2-C3-C4-C5
6	B	1106	GOL	C1-C2-C3-O3
6	A	1107	GOL	O1-C1-C2-C3
6	E	202	GOL	C1-C2-C3-O3
9	B	1109	D10	C3-C4-C5-C6
7	C	1104	PTY	C38-C39-C40-C41
7	C	1105	PTY	C39-C40-C41-C42
7	B	1105	PTY	C34-C35-C36-C37
5	A	1103	LMT	C2-C3-C4-C5
9	C	1111	D10	C2-C3-C4-C5
13	B	1116	DDR	C23-C24-C25-C26
5	B	1102	LMT	C5-C6-C7-C8
8	B	1107	OCT	C3-C4-C5-C6
7	C	1106	PTY	C11-C12-C13-C14
7	C	1106	PTY	C25-C26-C27-C28
9	B	1110	D10	C6-C7-C8-C9
5	B	1102	LMT	C6-C7-C8-C9
7	B	1105	PTY	C35-C36-C37-C38
8	C	1110	OCT	C2-C3-C4-C5
7	C	1106	PTY	C33-C34-C35-C36
5	B	1102	LMT	C2-C3-C4-C5
8	C	1109	OCT	C4-C5-C6-C7
5	C	1102	LMT	C2-C1-O1'-C1'
5	A	1103	LMT	O5'-C5'-C6'-O6'
3	A	1101	P6G	O10-C11-C12-O13
7	C	1104	PTY	C31-C32-C33-C34
9	B	1109	D10	C2-C3-C4-C5
5	B	1104	LMT	C4-C5-C6-C7

Continued on next page...

Continued from previous page...

Mol	Chain	Res	Type	Atoms
7	C	1106	PTY	C17-C18-C19-C20
6	B	1106	GOL	O2-C2-C3-O3
6	A	1107	GOL	O1-C1-C2-O2
7	C	1105	PTY	C18-C19-C20-C21
11	C	1113	HEX	C2-C3-C4-C5
13	B	1116	DDR	C1-C2-C3-C4
7	B	1105	PTY	C19-C20-C21-C22
5	A	1103	LMT	C1-C2-C3-C4
10	C	1112	DDQ	C6-C7-C8-C9
7	C	1104	PTY	C12-C13-C14-C15
7	C	1106	PTY	C23-C24-C25-C26
5	B	1103	LMT	C1-C2-C3-C4
5	B	1103	LMT	C3-C4-C5-C6
5	B	1104	LMT	O5B-C1B-O1B-C4'
14	B	1117	D12	C7-C8-C9-C10
7	B	1105	PTY	C20-C21-C22-C23
5	B	1104	LMT	C7-C8-C9-C10
7	C	1106	PTY	C20-C21-C22-C23
7	C	1105	PTY	C24-C25-C26-C27
10	C	1112	DDQ	C4-C5-C6-C7
7	C	1104	PTY	C40-C41-C42-C43
8	C	1108	OCT	C3-C4-C5-C6
5	A	1105	LMT	C5-C6-C7-C8
7	C	1104	PTY	C11-C8-O7-C6
7	B	1105	PTY	C17-C18-C19-C20
7	C	1106	PTY	C21-C22-C23-C24
7	B	1105	PTY	C31-C32-C33-C34
5	A	1105	LMT	C11-C10-C9-C8
10	C	1112	DDQ	C7-C8-C9-C10
7	C	1104	PTY	C15-C16-C17-C18
7	C	1105	PTY	C25-C26-C27-C28
5	C	1102	LMT	C1-C2-C3-C4
7	C	1104	PTY	O10-C8-O7-C6
7	B	1105	PTY	C3-O11-P1-O14
5	B	1103	LMT	O5B-C5B-C6B-O6B
7	B	1105	PTY	O14-C5-C6-C1
13	B	1116	DDR	C22-C23-C24-C25
5	C	1103	LMT	C5-C6-C7-C8
5	A	1103	LMT	C4-C5-C6-C7
7	C	1104	PTY	O4-C1-C6-C5
13	B	1116	DDR	C27-C28-C29-C30
7	C	1105	PTY	C11-C12-C13-C14

Continued on next page...

Continued from previous page...

Mol	Chain	Res	Type	Atoms
9	B	1111	D10	C7-C8-C9-C10
5	A	1103	LMT	C3-C4-C5-C6
9	B	1111	D10	C1-C2-C3-C4
5	B	1102	LMT	C9-C10-C11-C12
8	C	1109	OCT	C1-C2-C3-C4
7	C	1106	PTY	C5-C6-O7-C8
7	C	1106	PTY	C38-C39-C40-C41
7	C	1104	PTY	C26-C27-C28-C29
14	B	1117	D12	C6-C7-C8-C9
13	B	1116	DDR	C24-C25-C26-C27
8	C	1110	OCT	C1-C2-C3-C4
10	B	1113	DDQ	C7-C8-C9-C10
7	C	1106	PTY	O4-C30-C31-C32
9	B	1112	D10	C4-C5-C6-C7
5	A	1103	LMT	C7-C8-C9-C10
9	B	1110	D10	C7-C8-C9-C10
5	B	1102	LMT	O5B-C5B-C6B-O6B
5	C	1102	LMT	C9-C10-C11-C12
7	C	1106	PTY	C41-C42-C43-C44
9	C	1111	D10	C1-C2-C3-C4
7	C	1105	PTY	O14-C5-C6-C1
8	C	1110	OCT	C4-C5-C6-C7
7	C	1104	PTY	C33-C34-C35-C36
13	B	1116	DDR	C7-C8-C9-C10
7	B	1105	PTY	C21-C22-C23-C24
7	C	1105	PTY	C6-C5-O14-P1
7	C	1106	PTY	C6-C5-O14-P1
5	A	1105	LMT	C1-C2-C3-C4
5	C	1103	LMT	C2-C1-O1'-C1'
7	C	1104	PTY	C20-C21-C22-C23
7	C	1106	PTY	C19-C20-C21-C22
7	B	1105	PTY	C33-C34-C35-C36
7	C	1105	PTY	O14-C5-C6-O7
7	B	1105	PTY	O14-C5-C6-O7
5	A	1104	LMT	C2-C3-C4-C5
13	B	1116	DDR	C51-C52-C53-O53
8	C	1108	OCT	C2-C3-C4-C5
14	B	1117	D12	C1-C2-C3-C4
13	B	1116	DDR	C3-C4-C5-C6
7	C	1104	PTY	C23-C24-C25-C26
7	B	1105	PTY	C25-C26-C27-C28
5	B	1103	LMT	C2-C3-C4-C5

Continued on next page...

Continued from previous page...

Mol	Chain	Res	Type	Atoms
10	B	1113	DDQ	C6-C7-C8-C9
7	C	1105	PTY	C20-C21-C22-C23
8	C	1110	OCT	C5-C6-C7-C8
5	A	1105	LMT	C9-C10-C11-C12
5	A	1105	LMT	O5'-C5'-C6'-O6'
5	A	1103	LMT	C11-C10-C9-C8
7	C	1104	PTY	C34-C35-C36-C37
7	B	1105	PTY	C8-C11-C12-C13
7	C	1106	PTY	C24-C25-C26-C27
3	A	1101	P6G	O1-C2-C3-O4
3	A	1101	P6G	C8-C9-O10-C11
7	B	1105	PTY	C32-C33-C34-C35
3	A	1101	P6G	C15-C14-O13-C12
8	C	1108	OCT	C1-C2-C3-C4
7	B	1105	PTY	C11-C12-C13-C14
7	C	1105	PTY	C26-C27-C28-C29
7	C	1105	PTY	C21-C22-C23-C24
5	A	1103	LMT	C5-C6-C7-C8
5	B	1104	LMT	C3-C4-C5-C6
9	B	1110	D10	C3-C4-C5-C6
7	C	1105	PTY	C40-C41-C42-C43
13	B	1116	DDR	C2-C3-C4-C5
7	C	1105	PTY	C3-O11-P1-O12
7	C	1105	PTY	C5-O14-P1-O13
7	B	1105	PTY	C3-O11-P1-O13
7	C	1106	PTY	C5-O14-P1-O13
5	C	1103	LMT	C7-C8-C9-C10
7	C	1104	PTY	N1-C2-C3-O11
9	B	1112	D10	C3-C4-C5-C6
7	C	1106	PTY	C31-C32-C33-C34
5	A	1104	LMT	C4B-C5B-C6B-O6B
7	B	1105	PTY	C38-C39-C40-C41
3	A	1101	P6G	C14-C15-O16-C17
7	B	1105	PTY	C41-C42-C43-C44
7	C	1106	PTY	C16-C17-C18-C19
7	C	1104	PTY	C24-C25-C26-C27
5	B	1103	LMT	O1'-C1-C2-C3
5	B	1102	LMT	O1'-C1-C2-C3
7	B	1105	PTY	C5-O14-P1-O11
9	B	1110	D10	C2-C3-C4-C5
7	C	1106	PTY	C15-C16-C17-C18
6	E	202	GOL	O2-C2-C3-O3

Continued on next page...

Continued from previous page...

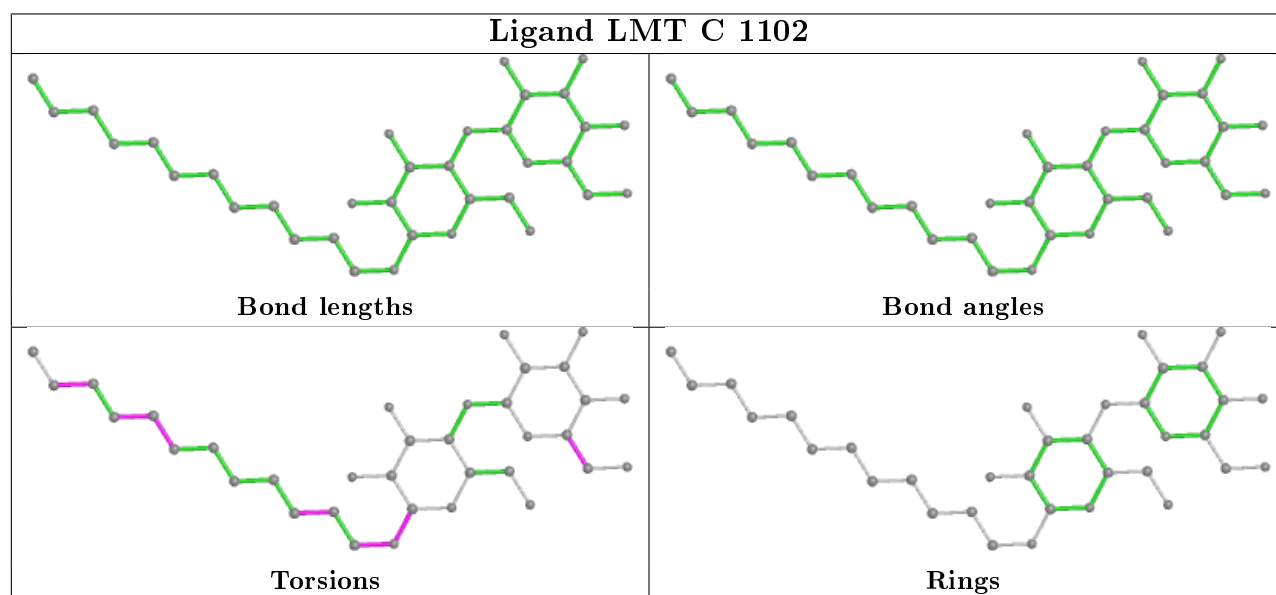
Mol	Chain	Res	Type	Atoms
14	B	1117	D12	C9-C10-C11-C12
5	A	1105	LMT	C2-C3-C4-C5
5	A	1105	LMT	C4-C5-C6-C7
7	C	1105	PTY	C16-C17-C18-C19
7	C	1106	PTY	C35-C36-C37-C38
5	B	1104	LMT	C1-C2-C3-C4
5	B	1102	LMT	O5'-C5'-C6'-O6'
9	B	1111	D10	C5-C6-C7-C8
8	B	1107	OCT	C1-C2-C3-C4
5	B	1103	LMT	C3'-C4'-O1B-C1B
14	B	1117	D12	C4-C5-C6-C7
7	B	1105	PTY	C12-C13-C14-C15
5	B	1103	LMT	C6-C7-C8-C9
7	C	1104	PTY	C21-C22-C23-C24
13	B	1116	DDR	O52-C52-C53-O53
13	B	1116	DDR	O52-C21-C22-C23
7	C	1106	PTY	O30-C30-C31-C32
8	B	1107	OCT	C4-C5-C6-C7
13	B	1116	DDR	C26-C27-C28-C29
5	B	1103	LMT	C5'-C4'-O1B-C1B
9	B	1110	D10	C5-C6-C7-C8
9	B	1111	D10	C4-C5-C6-C7
9	B	1111	D10	C2-C3-C4-C5
5	C	1102	LMT	C4B-C5B-C6B-O6B
6	C	1107	GOL	O1-C1-C2-O2
13	B	1116	DDR	C25-C26-C27-C28
7	C	1104	PTY	C25-C26-C27-C28
8	B	1107	OCT	C2-C3-C4-C5
8	B	1108	OCT	C5-C6-C7-C8
3	A	1101	P6G	C5-C6-O7-C8
13	B	1116	DDR	O21-C21-C22-C23
5	A	1103	LMT	C4'-C5'-C6'-O6'
7	B	1105	PTY	C5-O14-P1-O13
7	C	1106	PTY	C3-O11-P1-O12
7	B	1105	PTY	C16-C17-C18-C19
7	B	1105	PTY	N1-C2-C3-O11
7	B	1105	PTY	C36-C37-C38-C39
3	A	1101	P6G	C6-C5-O4-C3
7	C	1106	PTY	C13-C14-C15-C16
4	C	1101	FUA	C17-C16-O2-C31
3	A	1101	P6G	C2-C3-O4-C5

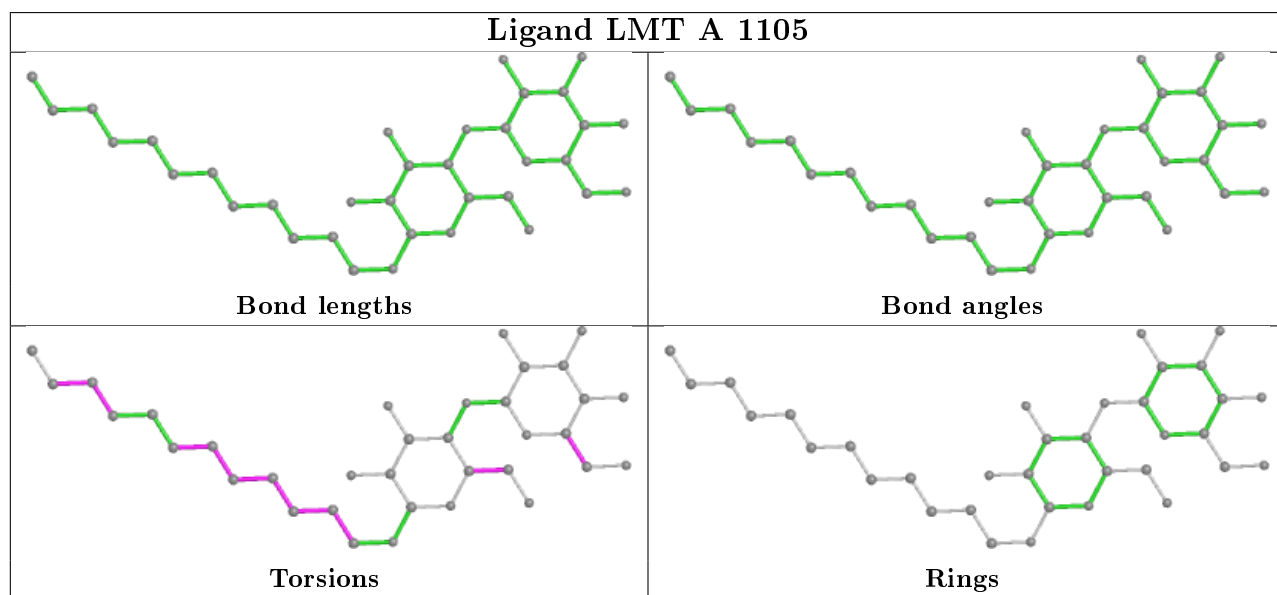
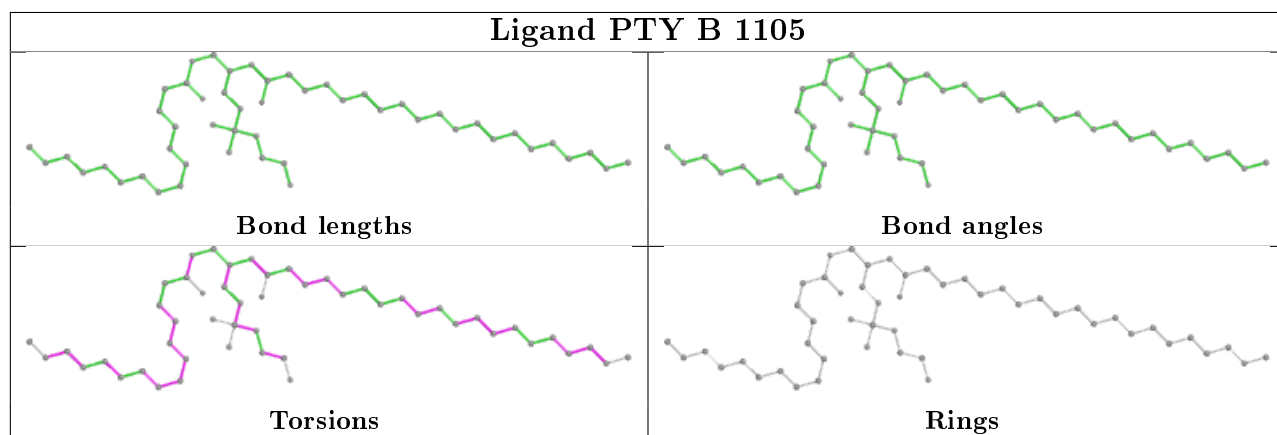
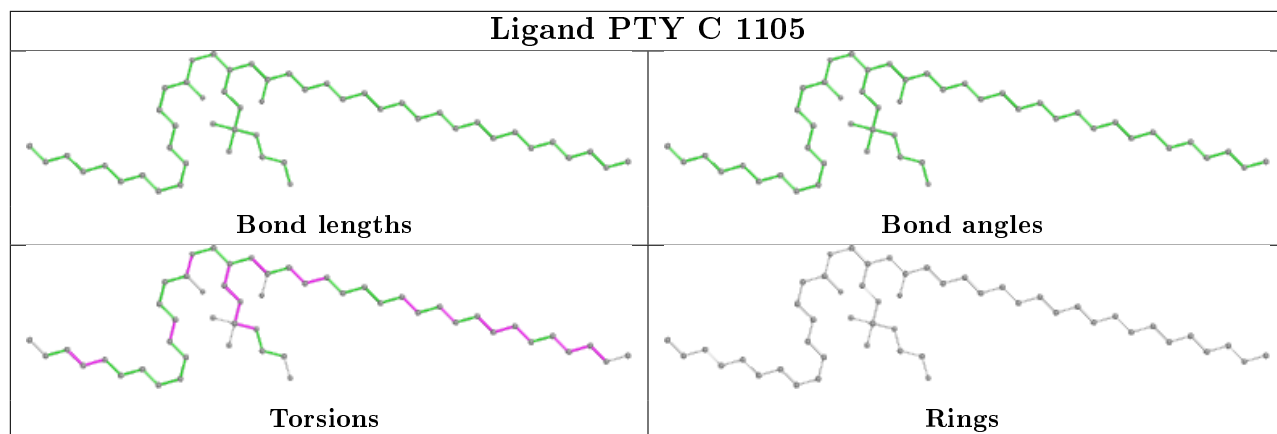
There are no ring outliers.

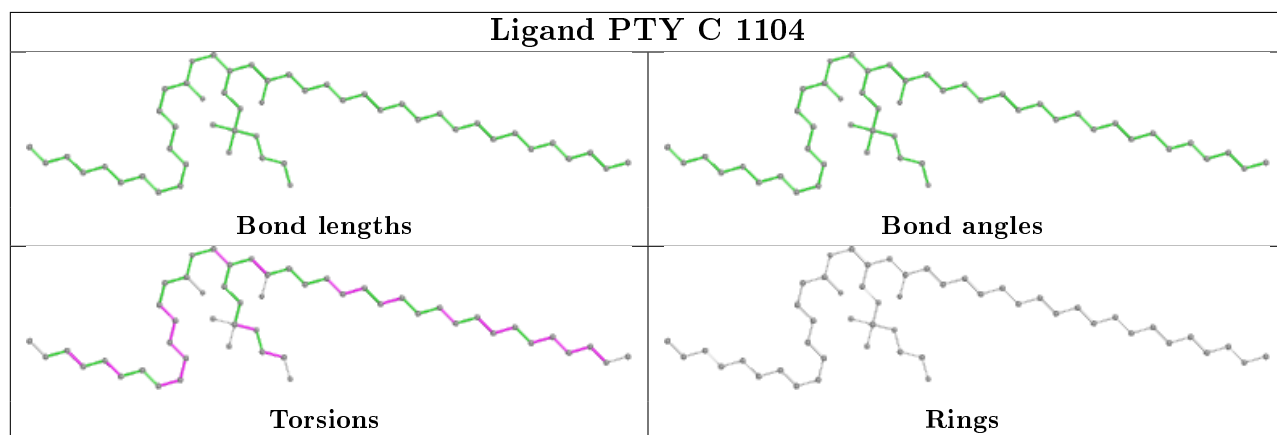
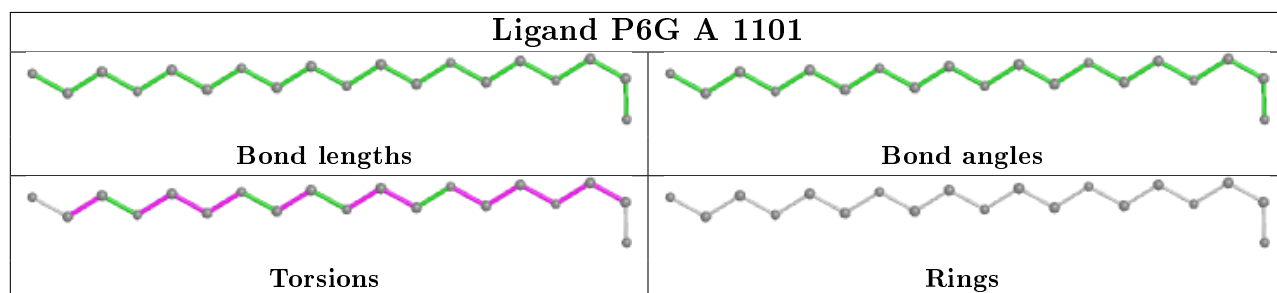
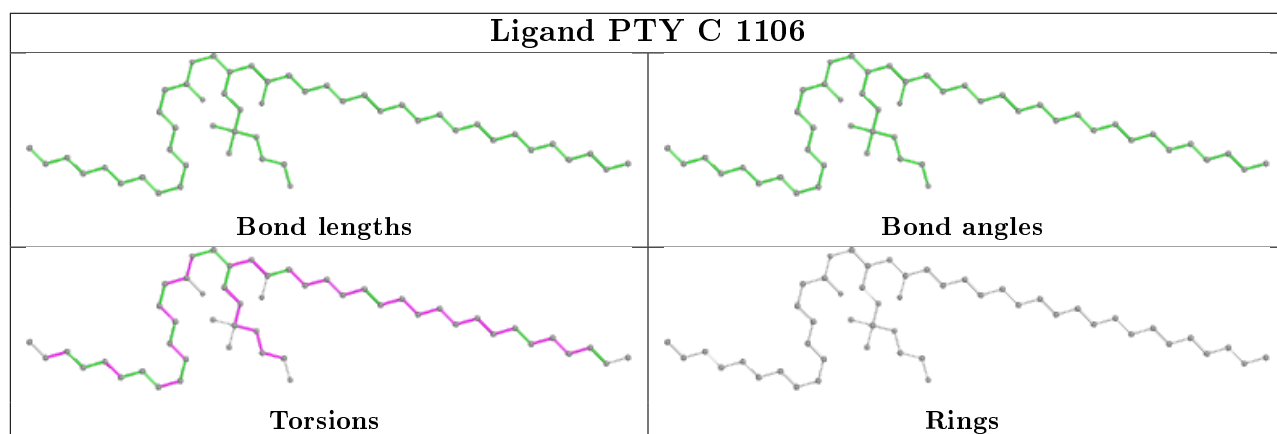
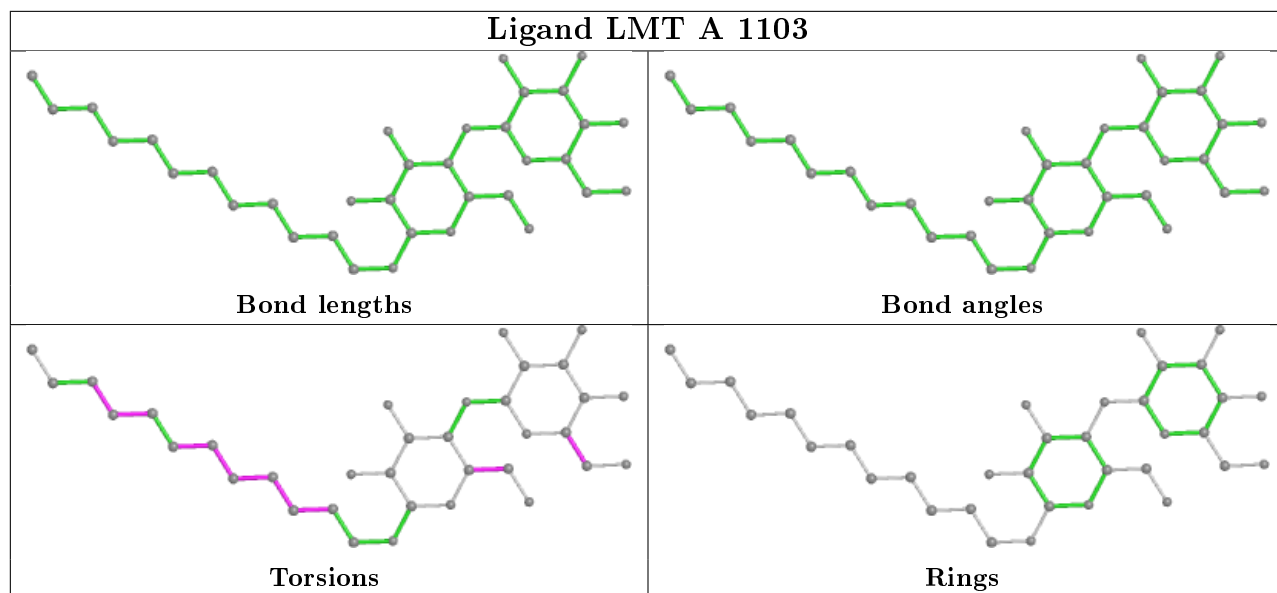
13 monomers are involved in 40 short contacts:

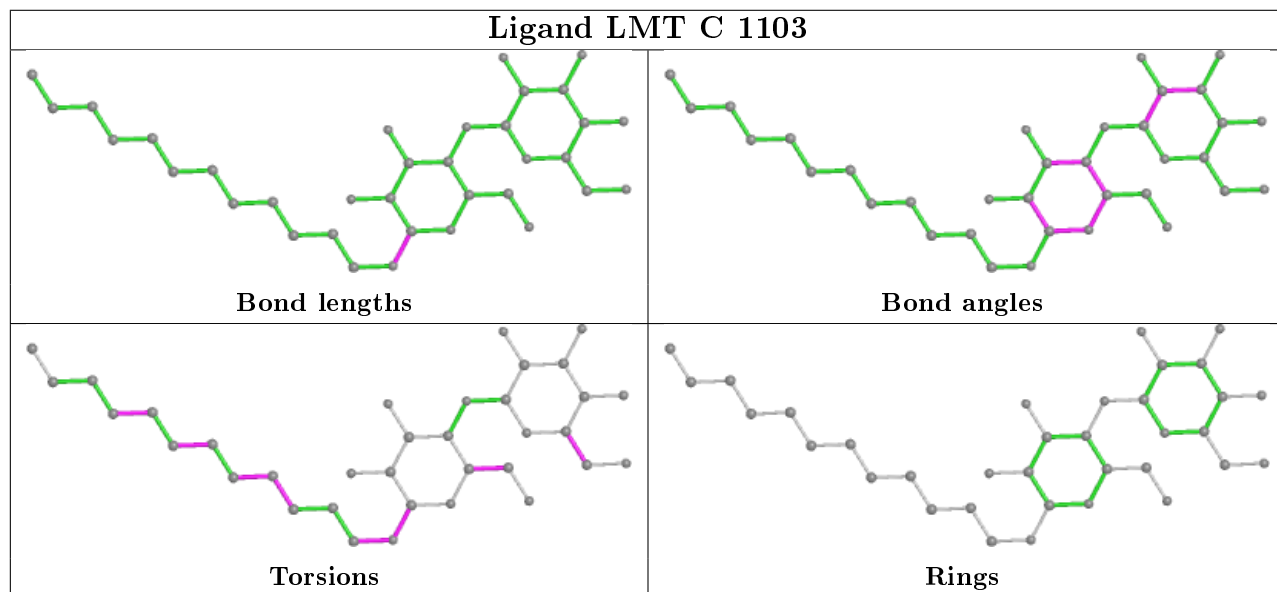
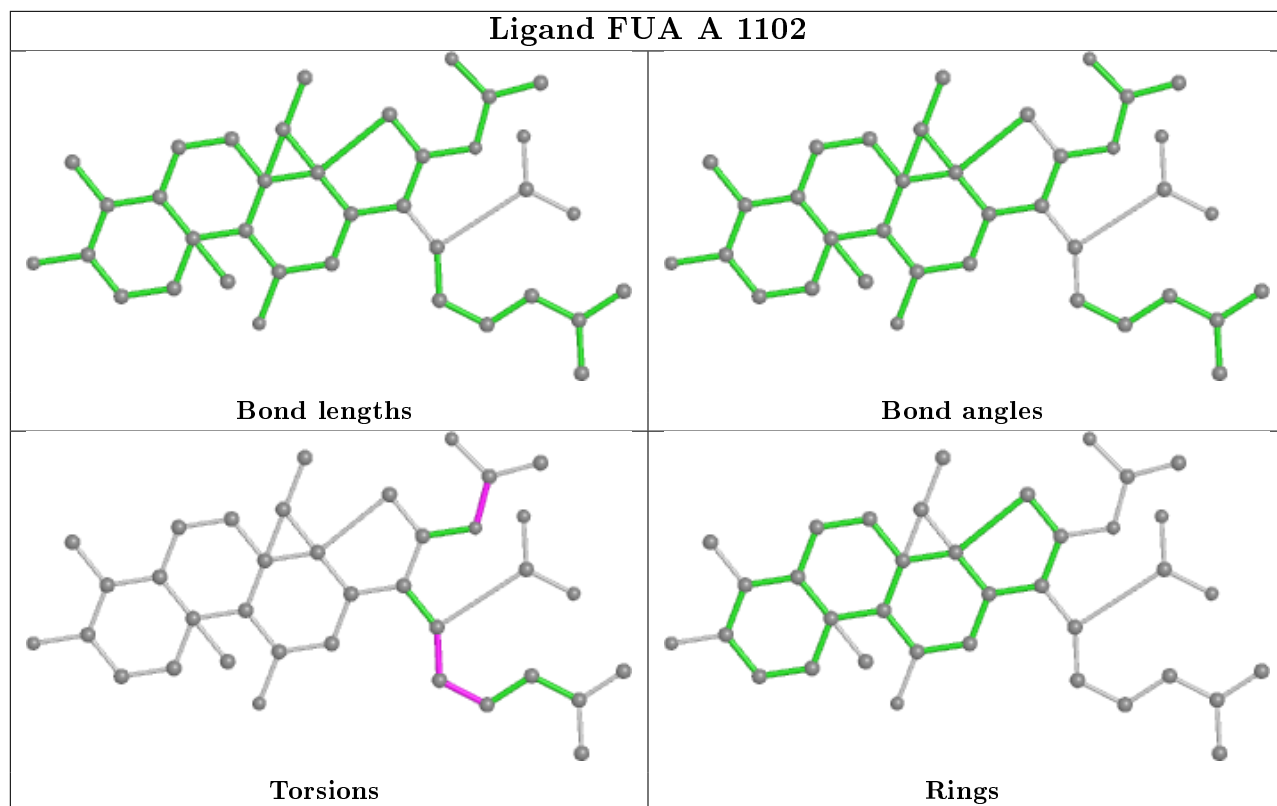
Mol	Chain	Res	Type	Clashes	Symm-Clashes
7	B	1105	PTY	8	0
7	C	1106	PTY	6	0
6	E	201	GOL	1	0
9	B	1111	D10	1	0
7	C	1104	PTY	2	0
4	A	1102	FUA	7	0
5	C	1103	LMT	1	0
5	A	1104	LMT	1	0
4	C	1101	FUA	6	0
5	B	1103	LMT	1	0
4	B	1101	FUA	7	0
6	A	1107	GOL	1	0
10	B	1113	DDQ	1	0

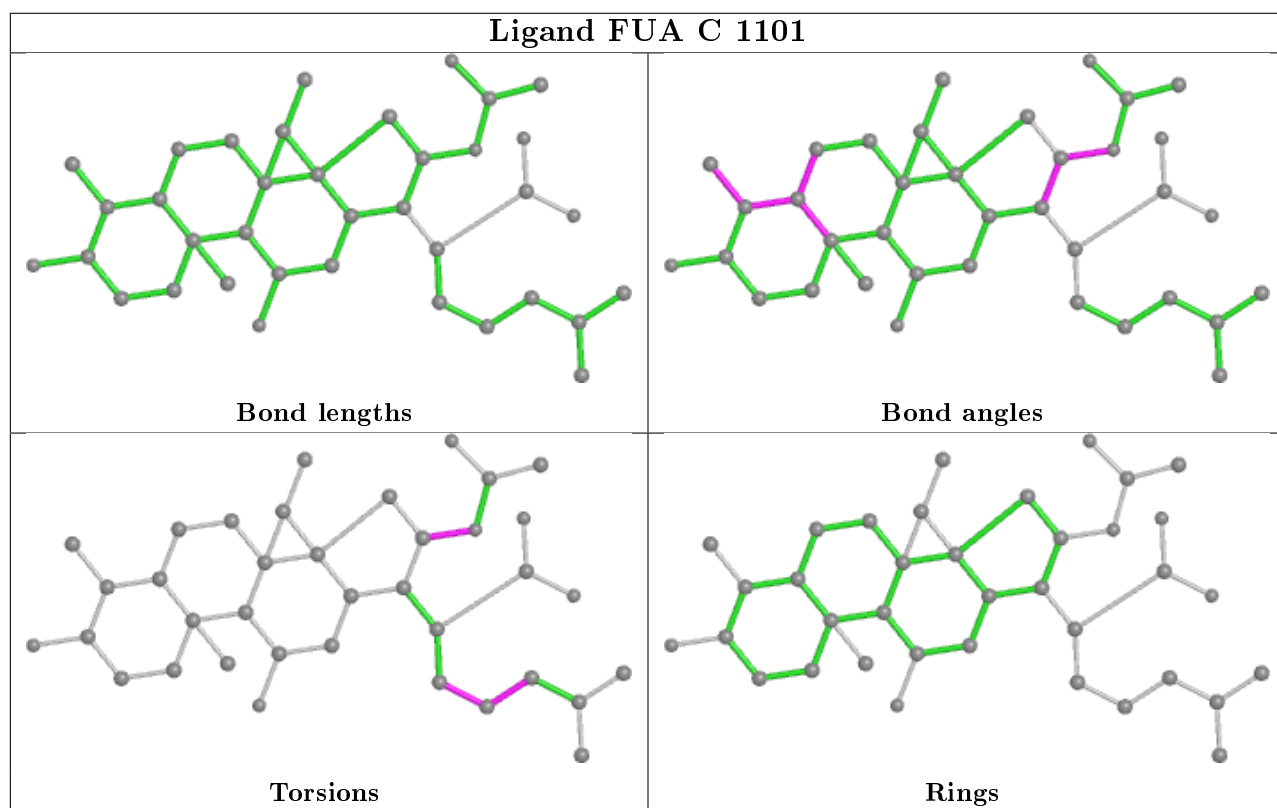
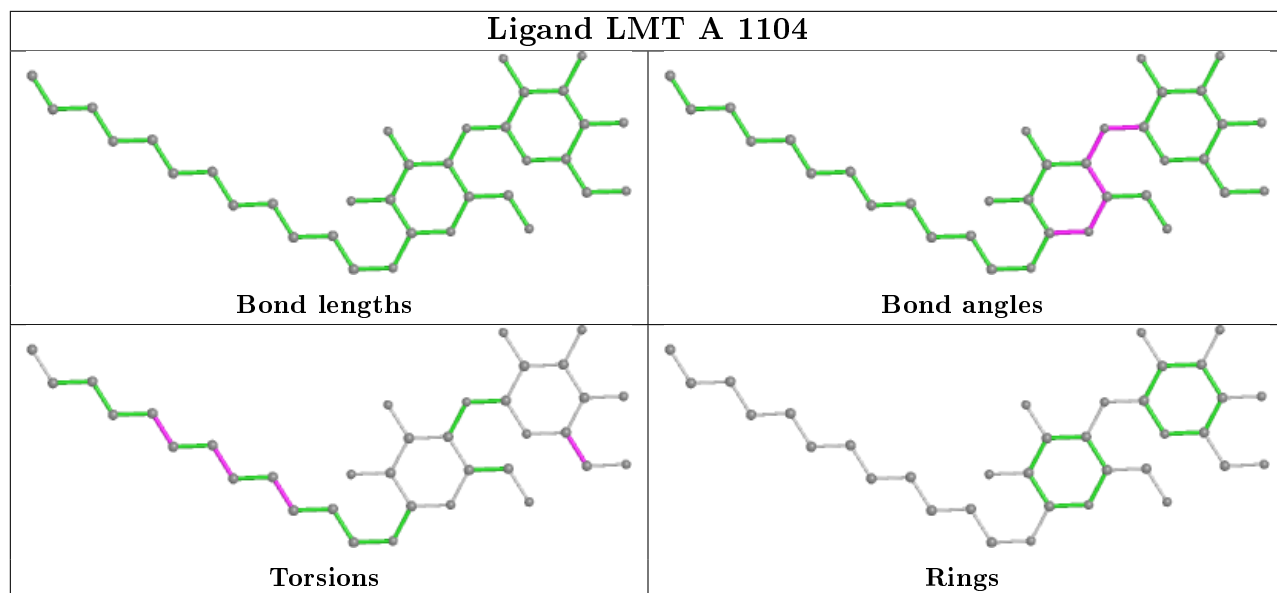
The following is a two-dimensional graphical depiction of Mogul quality analysis of bond lengths, bond angles, torsion angles, and ring geometry for all instances of the Ligand of Interest. In addition, ligands with molecular weight > 250 and outliers as shown on the validation Tables will also be included. For torsion angles, if less than 5% of the Mogul distribution of torsion angles is within 10 degrees of the torsion angle in question, then that torsion angle is considered an outlier. Any bond that is central to one or more torsion angles identified as an outlier by Mogul will be highlighted in the graph. For rings, the root-mean-square deviation (RMSD) between the ring in question and similar rings identified by Mogul is calculated over all ring torsion angles. If the average RMSD is greater than 60 degrees and the minimal RMSD between the ring in question and any Mogul-identified rings is also greater than 60 degrees, then that ring is considered an outlier. The outliers are highlighted in purple. The color gray indicates Mogul did not find sufficient equivalents in the CSD to analyse the geometry.

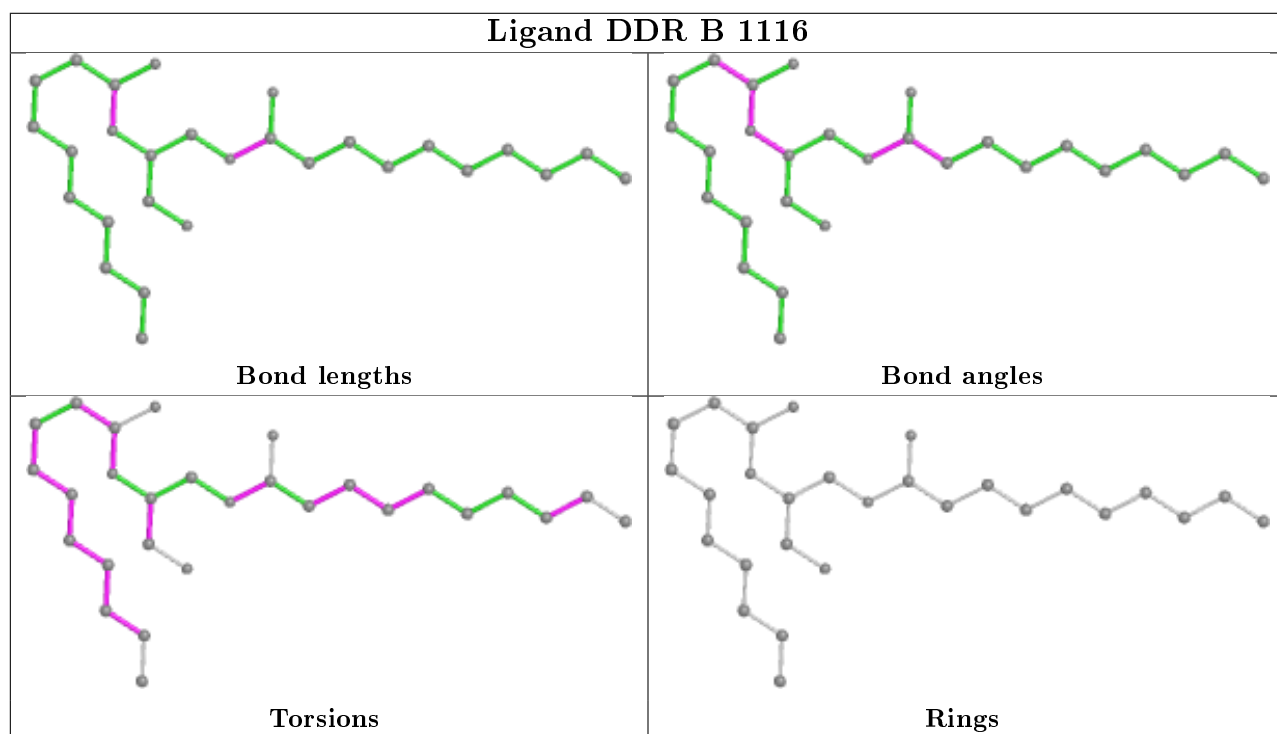
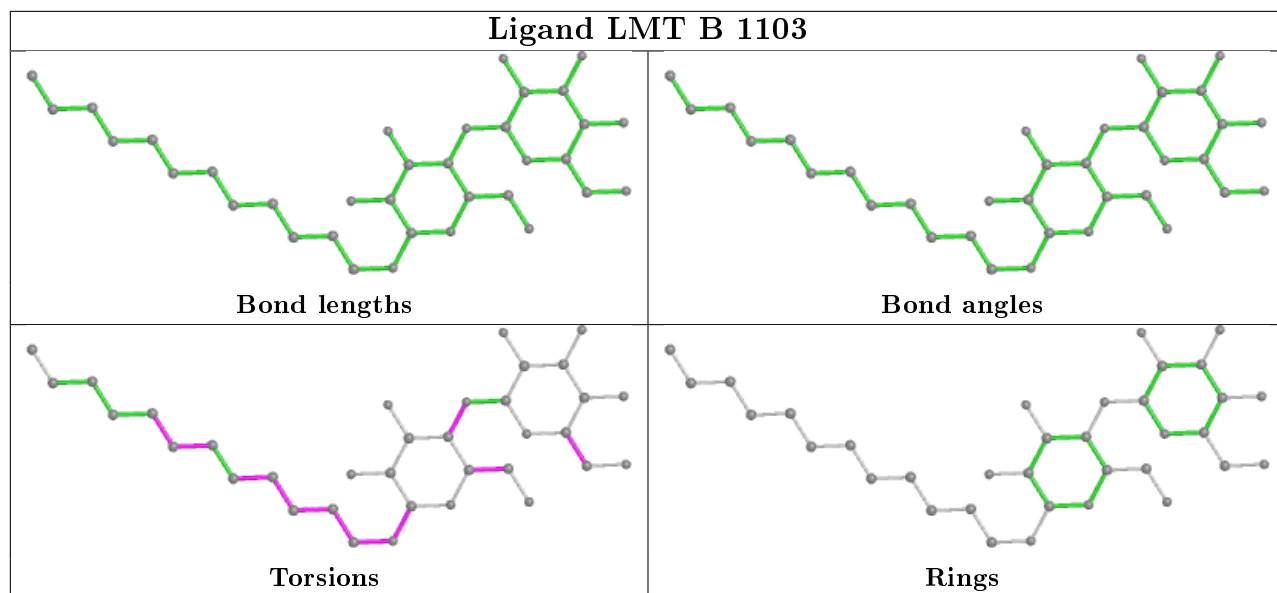


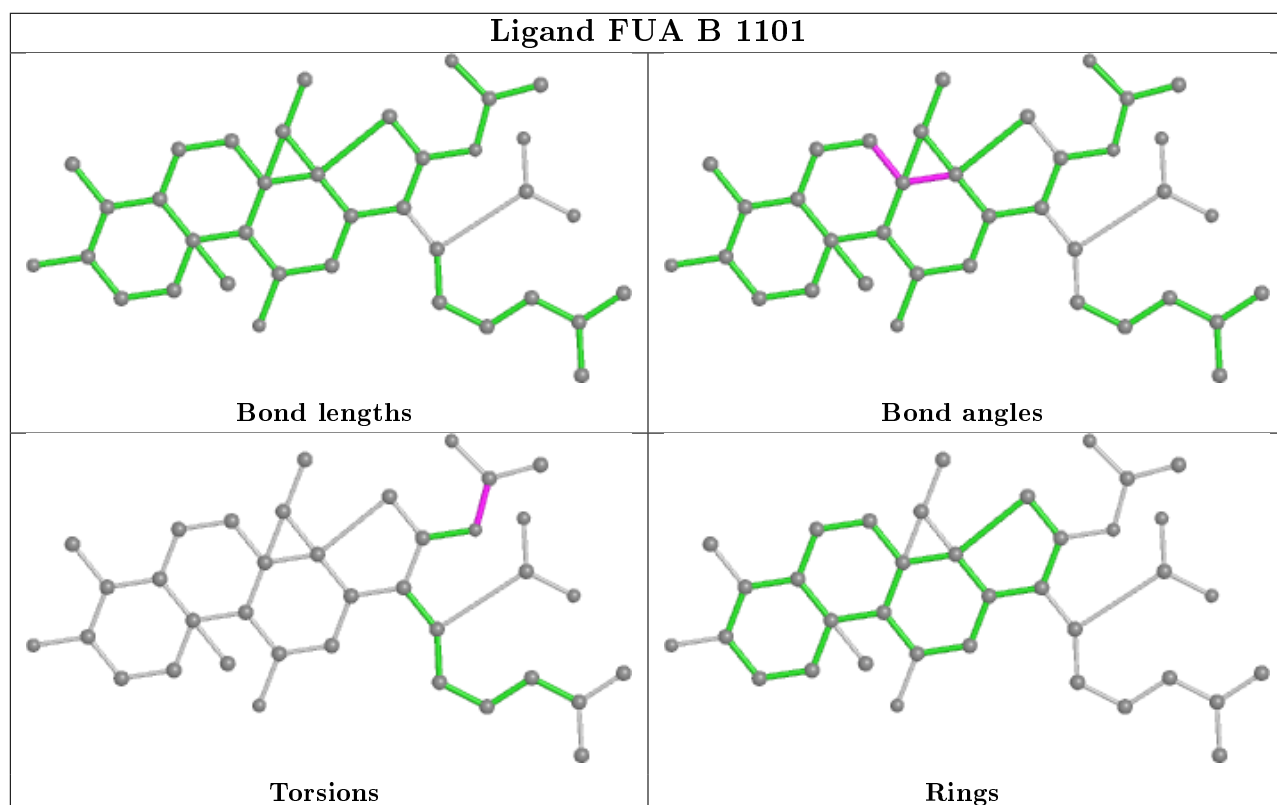
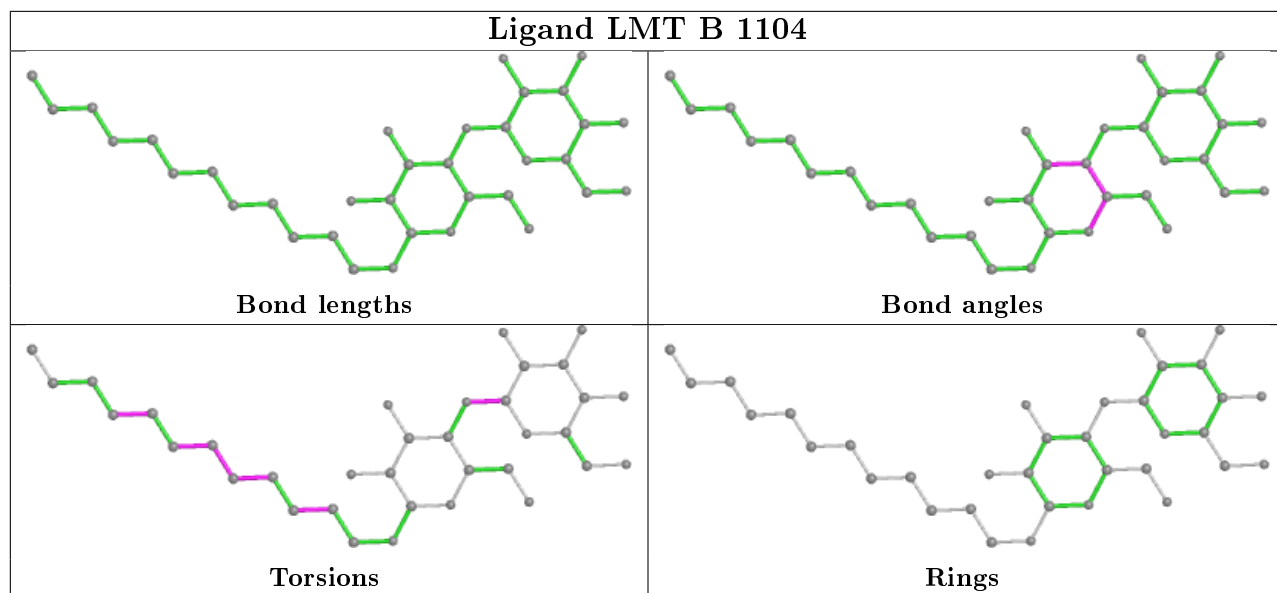


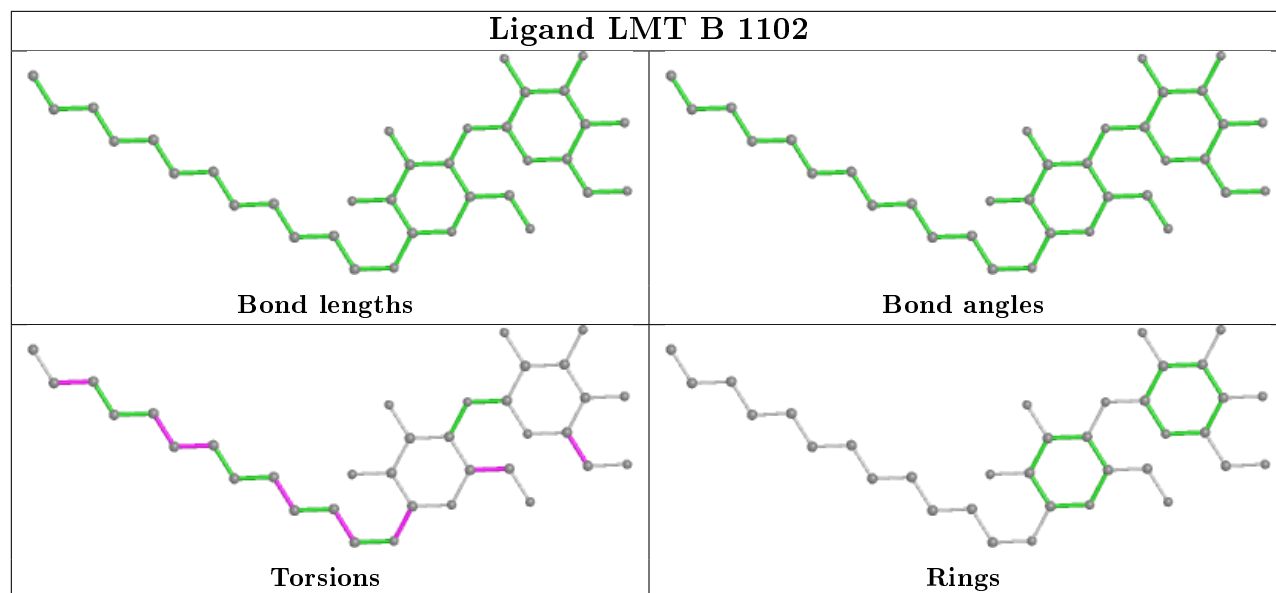












5.7 Other polymers [i](#)

There are no such residues in this entry.

5.8 Polymer linkage issues [i](#)

There are no chain breaks in this entry.

6 Fit of model and data [i](#)

6.1 Protein, DNA and RNA chains [i](#)

In the following table, the column labelled ‘#RSRZ> 2’ contains the number (and percentage) of RSRZ outliers, followed by percent RSRZ outliers for the chain as percentile scores relative to all X-ray entries and entries of similar resolution. The OWAB column contains the minimum, median, 95th percentile and maximum values of the occupancy-weighted average B-factor per residue. The column labelled ‘Q< 0.9’ lists the number of (and percentage) of residues with an average occupancy less than 0.9.

Mol	Chain	Analysed	<RSRZ>	#RSRZ>2	OWAB(Å ²)	Q<0.9
1	A	1036/1057 (98%)	0.21	46 (4%) 34 24	40, 69, 105, 127	1 (0%)
1	B	1034/1057 (97%)	0.09	37 (3%) 42 32	40, 62, 86, 103	1 (0%)
1	C	1034/1057 (97%)	0.15	28 (2%) 54 44	42, 55, 79, 94	0
2	D	156/169 (92%)	0.46	11 (7%) 16 9	51, 62, 81, 98	0
2	E	154/169 (91%)	1.09	33 (21%) 0 0	60, 75, 98, 104	0
All	All	3414/3509 (97%)	0.21	155 (4%) 33 23	40, 61, 94, 127	2 (0%)

All (155) RSRZ outliers are listed below:

Mol	Chain	Res	Type	RSRZ
2	E	35	ALA	8.3
1	B	678	THR	6.6
2	D	11	GLY	6.4
1	A	675	GLY	6.1
2	E	31	ARG	5.2
1	A	423	GLU	5.1
1	C	508	GLY	5.0
1	A	673	GLU	4.9
1	B	714	THR	4.8
1	B	833	PRO	4.7
2	E	34	MET	4.4
1	C	496	MET	4.1
1	A	712	MET	3.9
1	A	870	GLY	3.8
1	A	500	ILE	3.8
2	E	33	LEU	3.7
2	D	161	LEU	3.7
2	E	66	LEU	3.7
2	E	28	ASP	3.7
1	B	603	LYS	3.7

Continued on next page...

Continued from previous page...

Mol	Chain	Res	Type	RSRZ
1	B	597	TYR	3.6
2	E	32	ILE	3.6
1	A	834	GLY	3.6
2	D	165	LEU	3.6
1	C	730	ASP	3.6
2	E	67	LEU	3.5
2	D	150	PHE	3.5
1	A	869	SER	3.4
2	E	68	LYS	3.4
1	C	500	ILE	3.4
2	E	143	ASP	3.4
2	E	36	ASN	3.4
1	B	657	GLN	3.4
1	B	677	ALA	3.4
1	B	604	ASN	3.3
1	B	671	ILE	3.3
1	C	361	ASN	3.3
1	B	134	SER	3.3
2	E	126	LEU	3.3
1	A	427	PRO	3.2
1	A	501	ALA	3.2
2	E	163	GLU	3.2
1	A	871	ASN	3.2
2	E	69	ASN	3.2
1	B	617	PHE	3.2
1	A	512	PHE	3.1
1	A	362	PHE	3.1
1	A	533	GLY	3.1
2	E	99	LEU	3.1
1	C	803	ALA	3.0
2	D	153	SER	3.0
2	E	146	GLY	3.0
1	C	804	PHE	3.0
1	B	510	LYS	3.0
1	A	356	TYR	3.0
1	C	811	TYR	3.0
1	A	537	SER	2.9
1	C	512	PHE	2.9
1	A	867	ARG	2.9
1	C	362	PHE	2.9
1	A	431	THR	2.8
1	A	678	THR	2.8

Continued on next page...

Continued from previous page...

Mol	Chain	Res	Type	RSRZ
1	B	711	ASP	2.8
2	E	27	ASP	2.8
1	B	255	GLN	2.8
2	E	30	VAL	2.8
2	E	139	VAL	2.8
2	D	141	ALA	2.8
1	A	674	LEU	2.8
1	A	868	LEU	2.8
2	E	106	VAL	2.8
1	A	255	GLN	2.8
2	E	140	ASN	2.8
1	C	1034	SER	2.8
1	A	363	ARG	2.8
1	A	872	GLN	2.8
1	B	508	GLY	2.8
2	E	165	LEU	2.8
2	E	130	GLU	2.7
2	E	141	ALA	2.7
1	B	600	THR	2.6
1	B	676	THR	2.6
2	D	140	ASN	2.6
2	E	107	ASN	2.6
1	A	496	MET	2.6
1	C	363	ARG	2.6
1	B	832	ALA	2.6
1	C	513	PHE	2.6
1	A	425	LEU	2.6
1	B	256	ASP	2.6
1	A	670	ALA	2.6
1	A	498	LYS	2.6
1	A	918	PHE	2.6
1	B	653	ARG	2.6
2	E	29	GLU	2.5
1	C	425	LEU	2.5
1	A	543	VAL	2.5
1	A	866	GLU	2.5
1	A	534	ILE	2.4
1	C	426	PRO	2.4
1	C	253	VAL	2.4
1	A	846	GLN	2.4
1	C	705	GLU	2.4
1	C	918	PHE	2.4

Continued on next page...

Continued from previous page...

Mol	Chain	Res	Type	RSRZ
1	C	497	LEU	2.4
2	D	126	LEU	2.4
2	D	163	GLU	2.4
1	A	544	LEU	2.4
1	B	675	GLY	2.4
1	A	3	ASN	2.4
1	B	593	GLU	2.4
1	B	601	LYS	2.4
1	A	494	ALA	2.4
1	B	628	PHE	2.4
2	E	97	GLU	2.4
1	A	671	ILE	2.4
1	B	606	VAL	2.3
1	B	674	LEU	2.3
1	B	918	PHE	2.3
1	C	701	GLN	2.3
2	E	37	GLY	2.3
1	A	843	LEU	2.3
2	E	62	ILE	2.3
1	C	702	LEU	2.3
2	E	150	PHE	2.3
1	B	257	GLY	2.3
1	A	513	PHE	2.2
1	C	558	ARG	2.2
1	A	491	ALA	2.2
1	C	515	TRP	2.2
1	A	462	SER	2.2
1	C	806	SER	2.2
2	E	93	LEU	2.2
1	A	541	TYR	2.2
1	C	698	ALA	2.2
1	A	540	ARG	2.2
1	A	865	GLN	2.2
1	B	713	LEU	2.2
1	A	514	GLY	2.1
1	B	512	PHE	2.1
1	B	513	PHE	2.1
1	B	254	ASN	2.1
1	B	655	PHE	2.1
2	D	166	GLN	2.1
1	A	653	ARG	2.1
1	B	638	PRO	2.1

Continued on next page...

Continued from previous page...

Mol	Chain	Res	Type	RSRZ
1	B	511	GLY	2.1
2	E	87	ALA	2.0
2	E	109	LYS	2.0
1	B	332	PHE	2.0
1	B	830	GLN	2.0
1	C	733	GLN	2.0
1	C	850	LYS	2.0
1	C	511	GLY	2.0
2	D	149	ALA	2.0

6.2 Non-standard residues in protein, DNA, RNA chains [i](#)

There are no non-standard protein/DNA/RNA residues in this entry.

6.3 Carbohydrates [i](#)

There are no monosaccharides in this entry.

6.4 Ligands [i](#)

In the following table, the Atoms column lists the number of modelled atoms in the group and the number defined in the chemical component dictionary. The B-factors column lists the minimum, median, 95th percentile and maximum values of B factors of atoms in the group. The column labelled 'Q< 0.9' lists the number of atoms with occupancy less than 0.9.

Mol	Type	Chain	Res	Atoms	RSCC	RSR	B-factors(\AA^2)	Q<0.9
5	LMT	B	1104	35/35	0.56	0.42	91,114,123,123	0
8	OCT	C	1108	8/8	0.69	0.32	67,68,68,68	0
7	PTY	B	1105	50/50	0.70	0.44	106,123,136,137	0
7	PTY	C	1106	50/50	0.72	0.37	96,112,125,127	0
5	LMT	C	1103	35/35	0.73	0.45	93,112,114,114	0
13	DDR	B	1116	28/28	0.74	0.41	95,104,105,107	0
4	FUA	A	1102	37/37	0.74	0.39	98,100,100,100	37
7	PTY	C	1105	50/50	0.75	0.28	83,88,97,99	0
6	GOL	A	1106	6/6	0.76	0.34	70,71,71,72	0
5	LMT	A	1104	35/35	0.76	0.39	104,117,129,130	0
10	DDQ	B	1113	14/14	0.76	0.29	97,102,107,107	0
8	OCT	C	1109	8/8	0.77	0.30	78,79,80,80	0
7	PTY	C	1104	50/50	0.79	0.31	91,112,121,123	0
11	HEX	B	1114	6/6	0.80	0.41	64,64,64,64	0

Continued on next page...

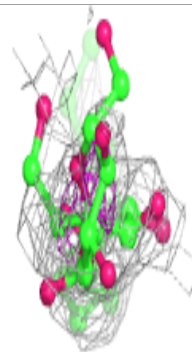
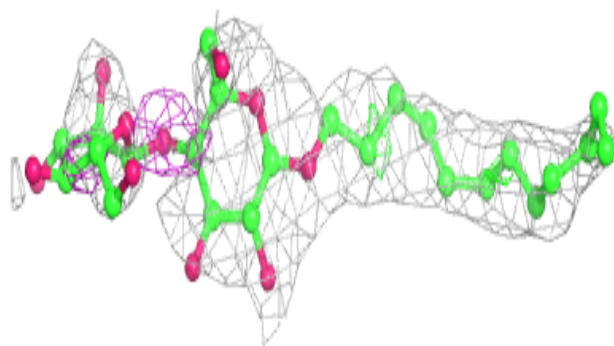
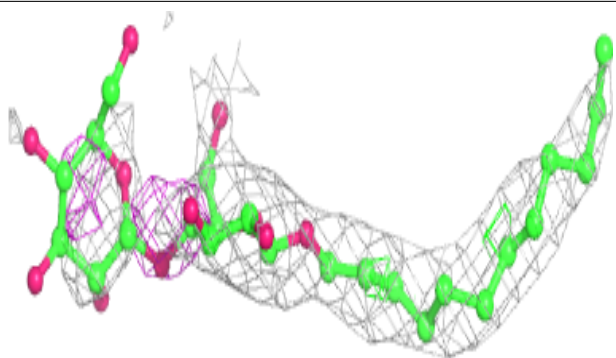
Continued from previous page...

Mol	Type	Chain	Res	Atoms	RSCC	RSR	B-factors(\AA^2)	Q<0.9
8	OCT	C	1110	8/8	0.81	0.32	80,81,81,81	0
5	LMT	A	1103	35/35	0.81	0.35	93,104,109,109	0
4	FUA	C	1101	37/37	0.81	0.46	90,94,96,96	37
8	OCT	B	1107	8/8	0.82	0.22	88,90,90,90	0
10	DDQ	C	1112	14/14	0.82	0.28	83,83,84,84	0
9	D10	B	1109	10/10	0.82	0.33	69,70,70,70	0
14	D12	B	1117	12/12	0.82	0.26	85,86,87,87	0
3	P6G	A	1101	19/19	0.85	0.26	45,46,47,47	0
8	OCT	B	1108	8/8	0.85	0.34	85,86,86,86	0
5	LMT	B	1103	35/35	0.85	0.27	84,89,90,91	0
6	GOL	A	1107	6/6	0.86	0.26	69,70,70,70	0
5	LMT	B	1102	35/35	0.86	0.33	83,89,94,94	0
6	GOL	B	1106	6/6	0.86	0.29	81,82,83,83	0
5	LMT	A	1105	35/35	0.88	0.42	107,112,116,116	0
9	D10	B	1111	10/10	0.88	0.29	71,71,72,72	0
4	FUA	B	1101	37/37	0.89	0.28	79,81,84,84	0
9	D10	B	1110	10/10	0.89	0.23	73,74,74,74	0
5	LMT	C	1102	35/35	0.90	0.29	72,74,76,76	0
6	GOL	C	1107	6/6	0.90	0.27	52,53,53,54	0
9	D10	C	1111	10/10	0.90	0.37	73,74,74,74	0
6	GOL	E	202	6/6	0.90	0.18	85,85,86,86	0
9	D10	B	1112	10/10	0.91	0.20	73,74,74,74	0
11	HEX	C	1113	6/6	0.92	0.43	33,33,33,33	0
6	GOL	E	201	6/6	0.93	0.18	72,72,73,73	0
12	SO4	C	1114	5/5	0.97	0.10	74,74,75,75	0
12	SO4	B	1115	5/5	0.97	0.12	82,83,83,83	0

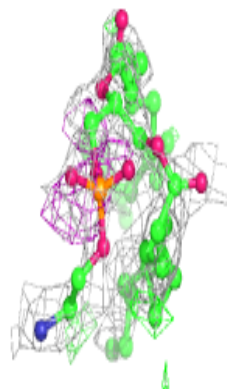
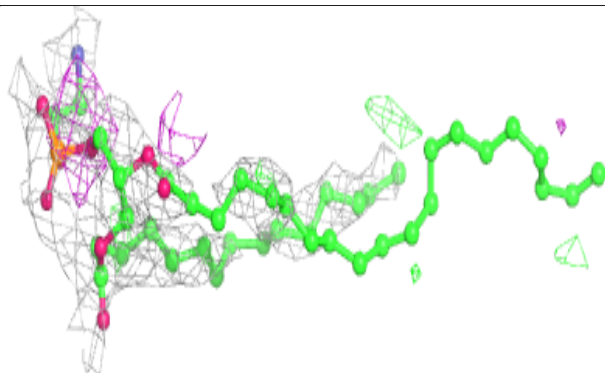
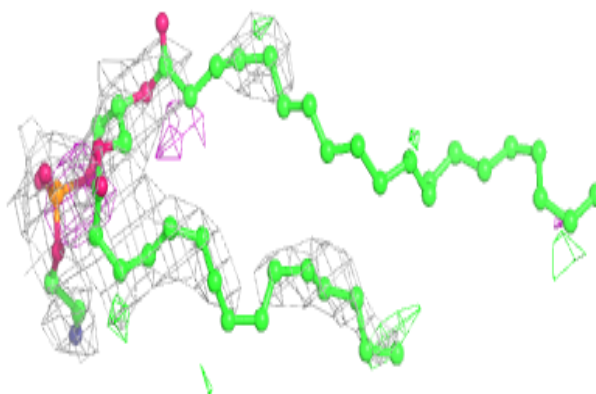
The following is a graphical depiction of the model fit to experimental electron density of all instances of the Ligand of Interest. In addition, ligands with molecular weight > 250 and outliers as shown on the geometry validation Tables will also be included. Each fit is shown from different orientation to approximate a three-dimensional view.

Electron density around LMT B 1104:

$2mF_o-DF_c$ (at 0.7 rmsd) in gray
 mF_o-DF_c (at 3 rmsd) in purple (negative)
and green (positive)

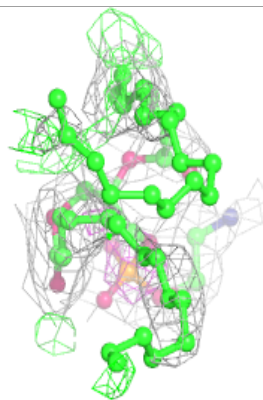
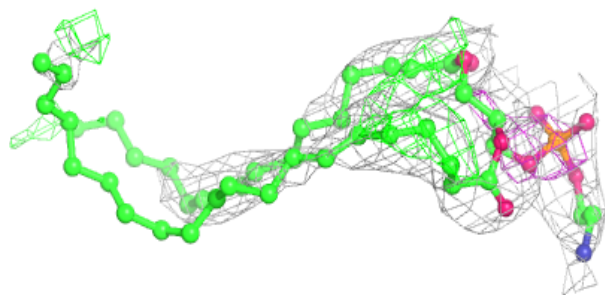
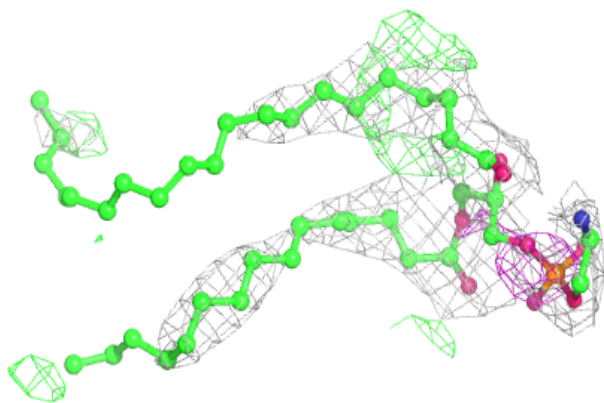
**Electron density around PTY B 1105:**

$2mF_o-DF_c$ (at 0.7 rmsd) in gray
 mF_o-DF_c (at 3 rmsd) in purple (negative)
and green (positive)

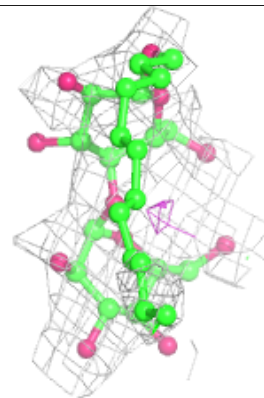
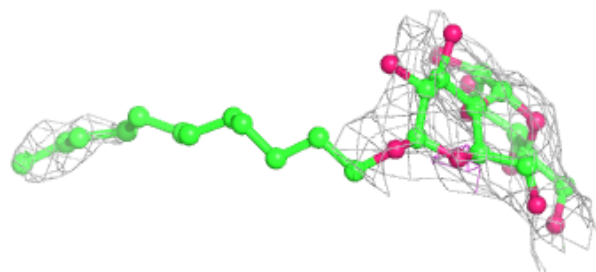
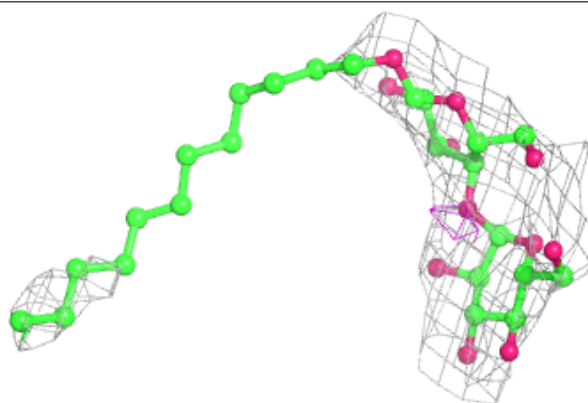


Electron density around PTY C 1106:

$2mF_o-DF_c$ (at 0.7 rmsd) in gray
 mF_o-DF_c (at 3 rmsd) in purple (negative)
and green (positive)

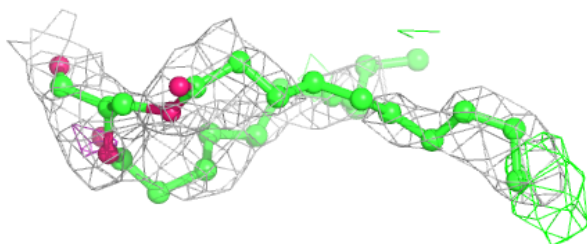
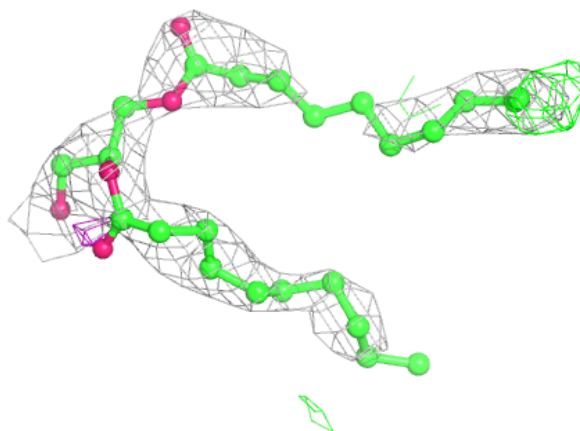
**Electron density around LMT C 1103:**

$2mF_o-DF_c$ (at 0.7 rmsd) in gray
 mF_o-DF_c (at 3 rmsd) in purple (negative)
and green (positive)



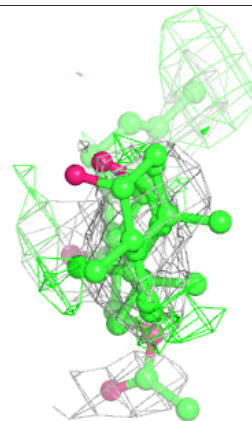
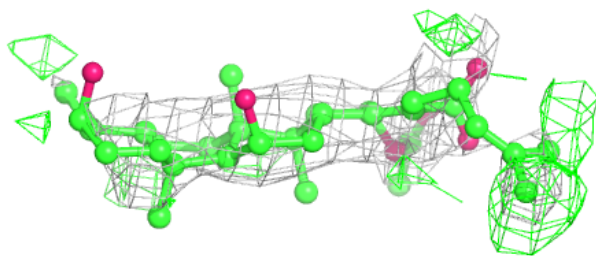
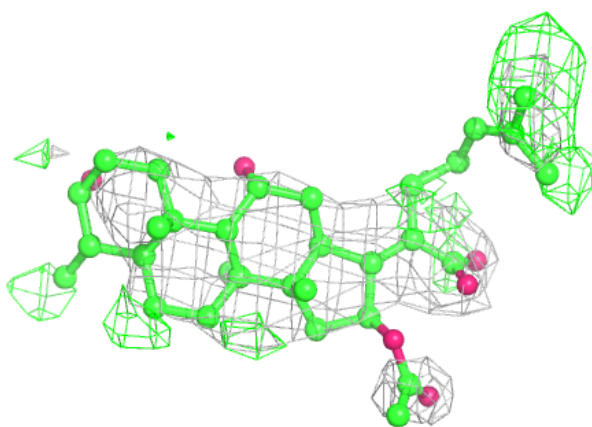
Electron density around DDR B 1116:

$2mF_o-DF_c$ (at 0.7 rmsd) in gray
 mF_o-DF_c (at 3 rmsd) in purple (negative)
and green (positive)

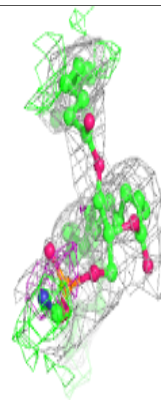
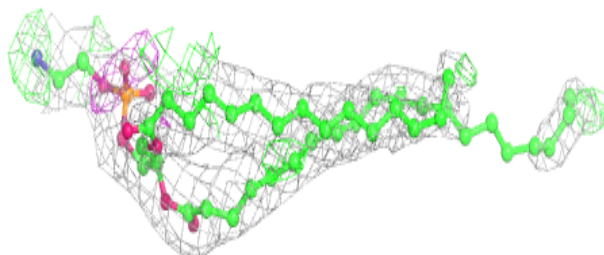
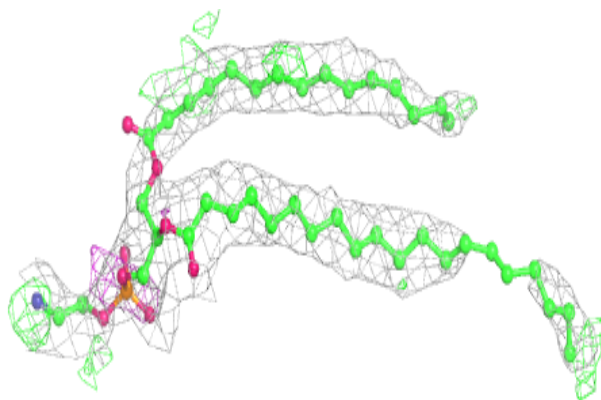


Electron density around FUA A 1102:

$2mF_o-DF_c$ (at 0.7 rmsd) in gray
 mF_o-DF_c (at 3 rmsd) in purple (negative)
and green (positive)

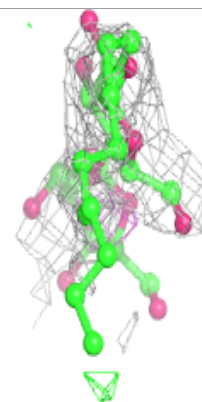
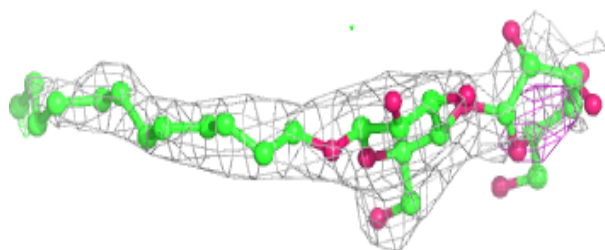
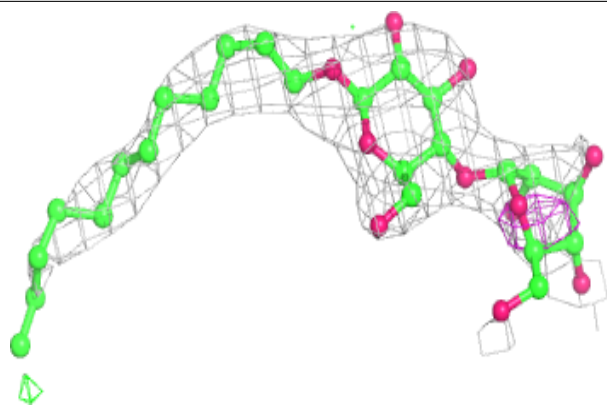
**Electron density around PTY C 1105:**

$2mF_o-DF_c$ (at 0.7 rmsd) in gray
 mF_o-DF_c (at 3 rmsd) in purple (negative)
and green (positive)

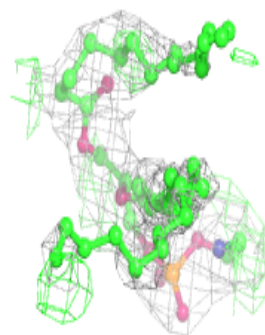
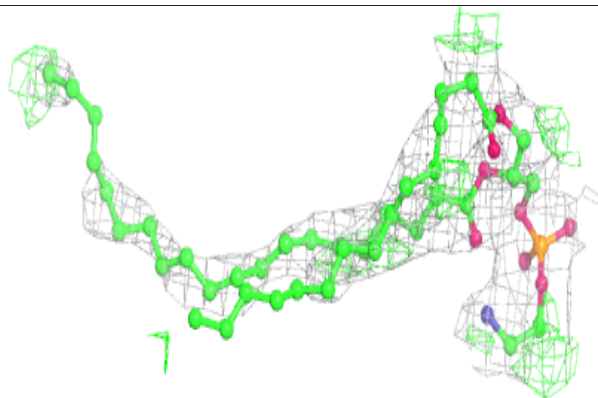
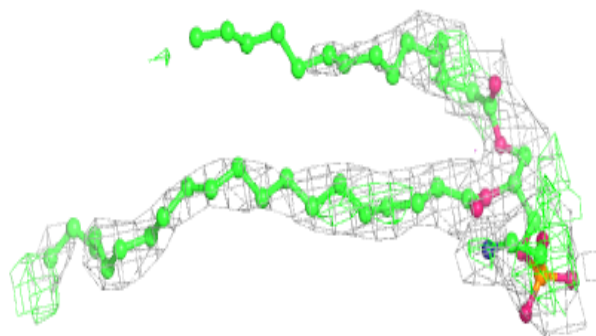


Electron density around LMT A 1104:

$2mF_o-DF_c$ (at 0.7 rmsd) in gray
 mF_o-DF_c (at 3 rmsd) in purple (negative)
and green (positive)

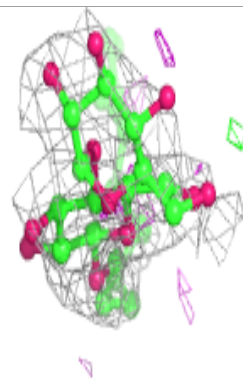
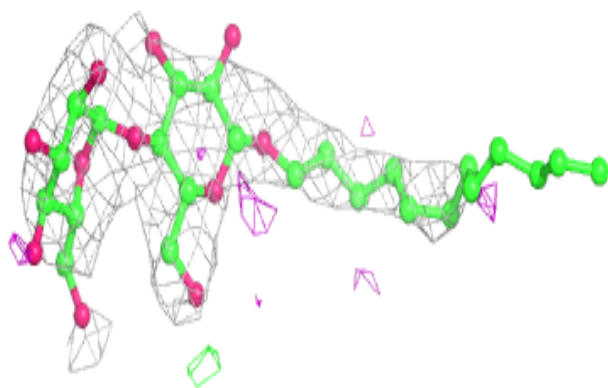
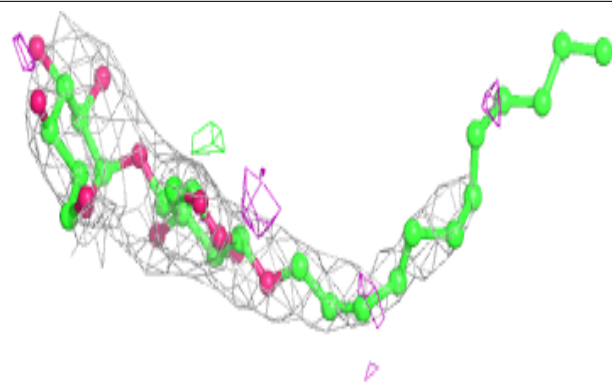
**Electron density around PTY C 1104:**

$2mF_o-DF_c$ (at 0.7 rmsd) in gray
 mF_o-DF_c (at 3 rmsd) in purple (negative)
and green (positive)



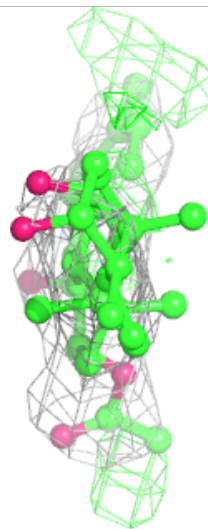
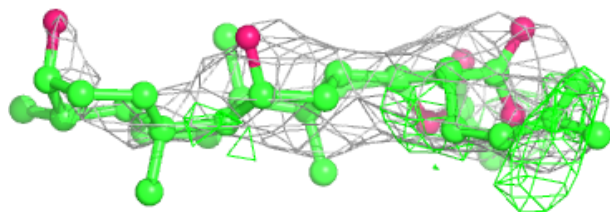
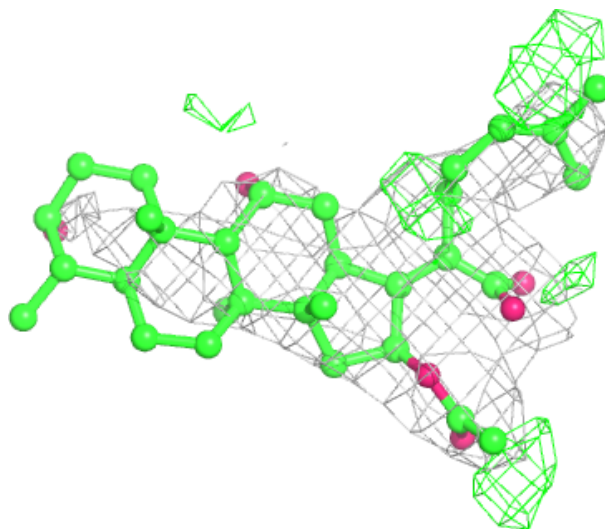
Electron density around LMT A 1103:

$2mF_o-DF_c$ (at 0.7 rmsd) in gray
 mF_o-DF_c (at 3 rmsd) in purple (negative)
and green (positive)



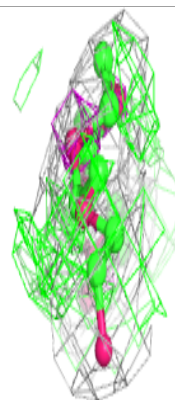
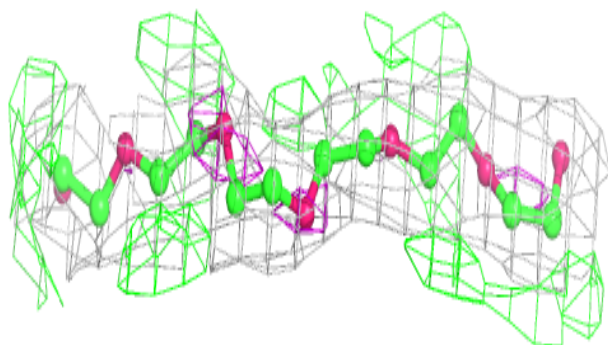
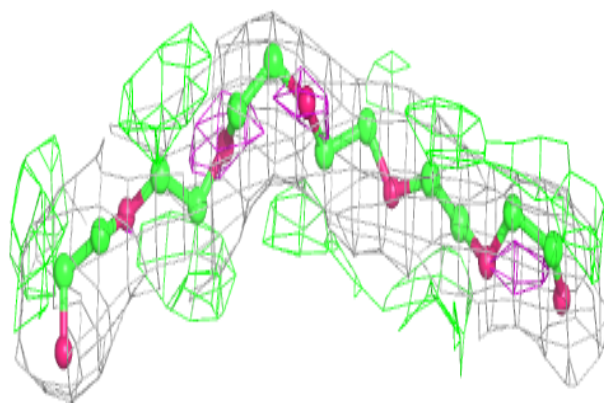
Electron density around FUA C 1101:

$2mF_o-DF_c$ (at 0.7 rmsd) in gray
 mF_o-DF_c (at 3 rmsd) in purple (negative)
and green (positive)

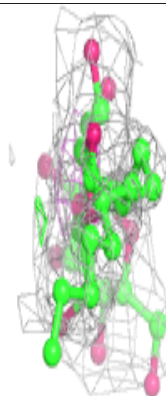
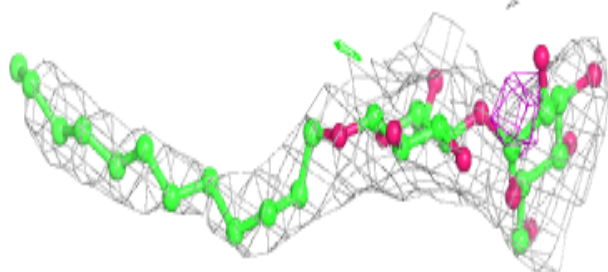
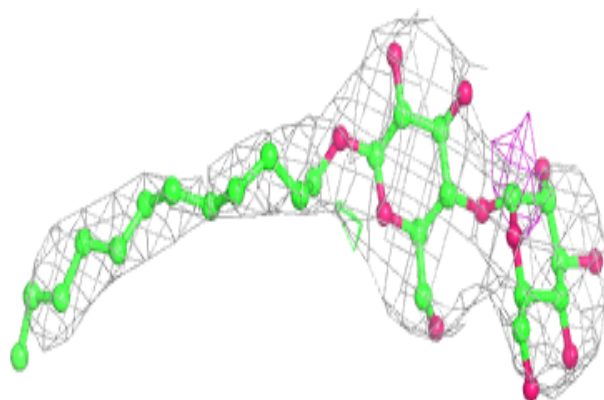


Electron density around P6G A 1101:

$2mF_o-DF_c$ (at 0.7 rmsd) in gray
 mF_o-DF_c (at 3 rmsd) in purple (negative)
and green (positive)

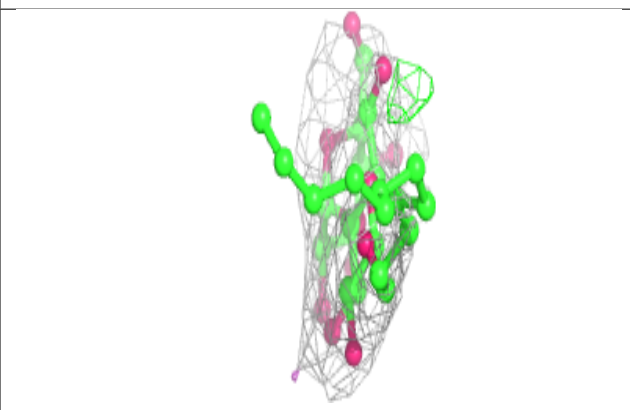
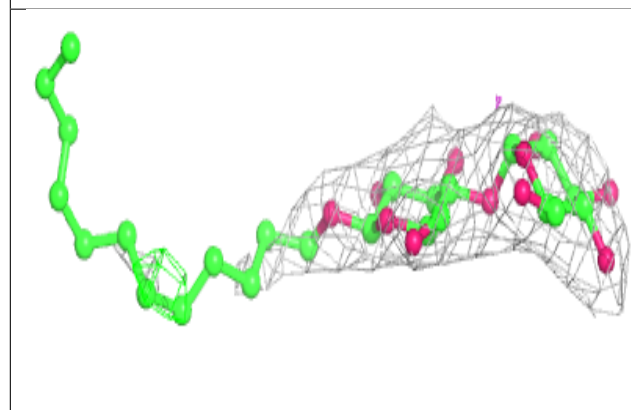
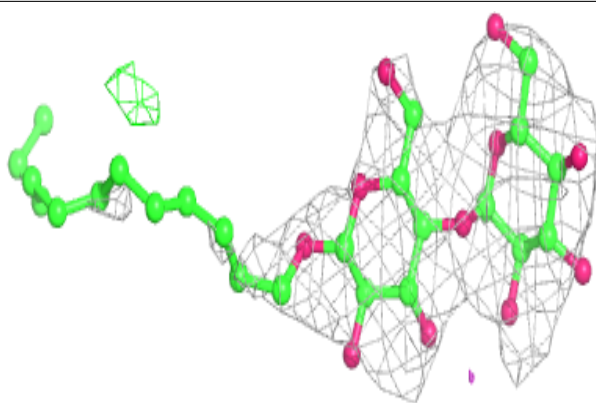
**Electron density around LMT B 1103:**

$2mF_o-DF_c$ (at 0.7 rmsd) in gray
 mF_o-DF_c (at 3 rmsd) in purple (negative)
and green (positive)

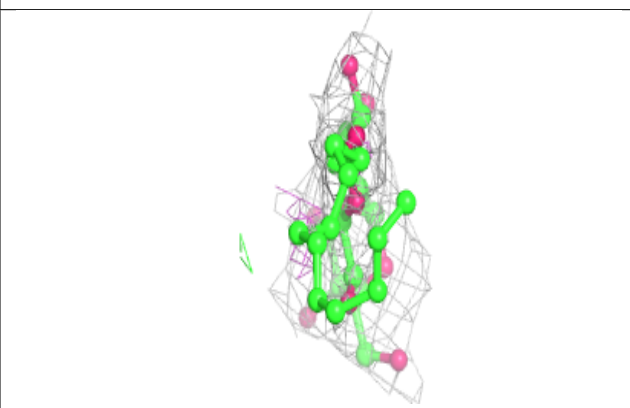
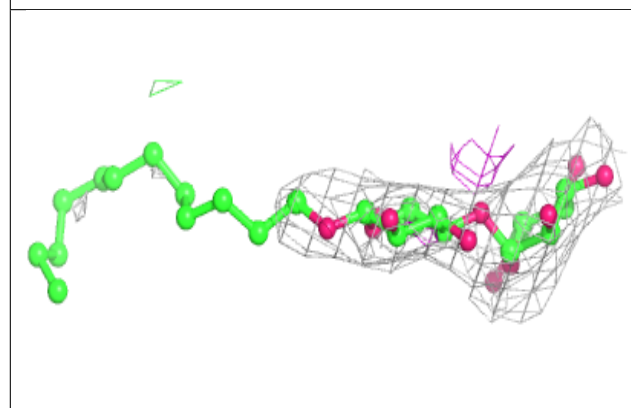
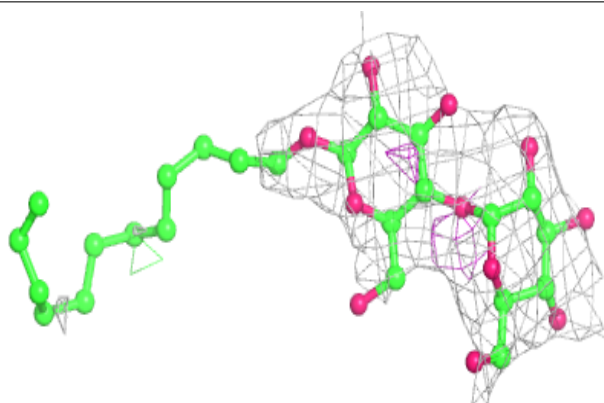


Electron density around LMT B 1102:

$2mF_o-DF_c$ (at 0.7 rmsd) in gray
 mF_o-DF_c (at 3 rmsd) in purple (negative)
and green (positive)

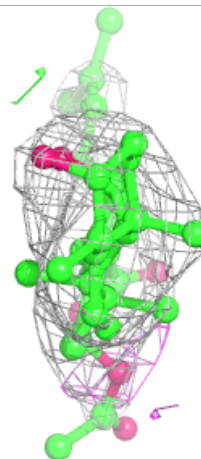
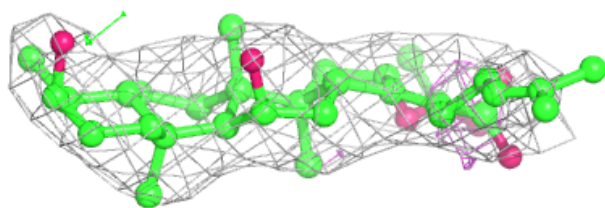
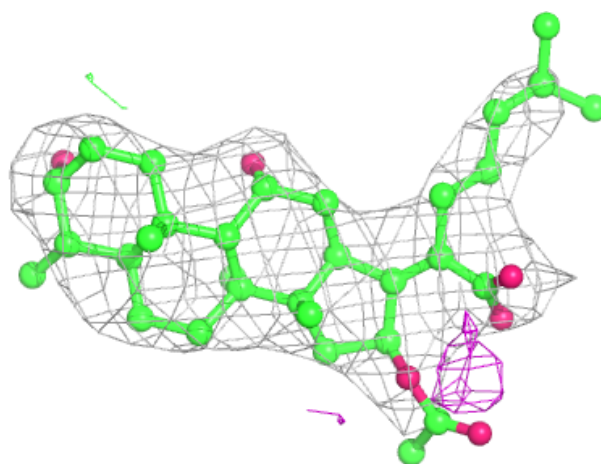
**Electron density around LMT A 1105:**

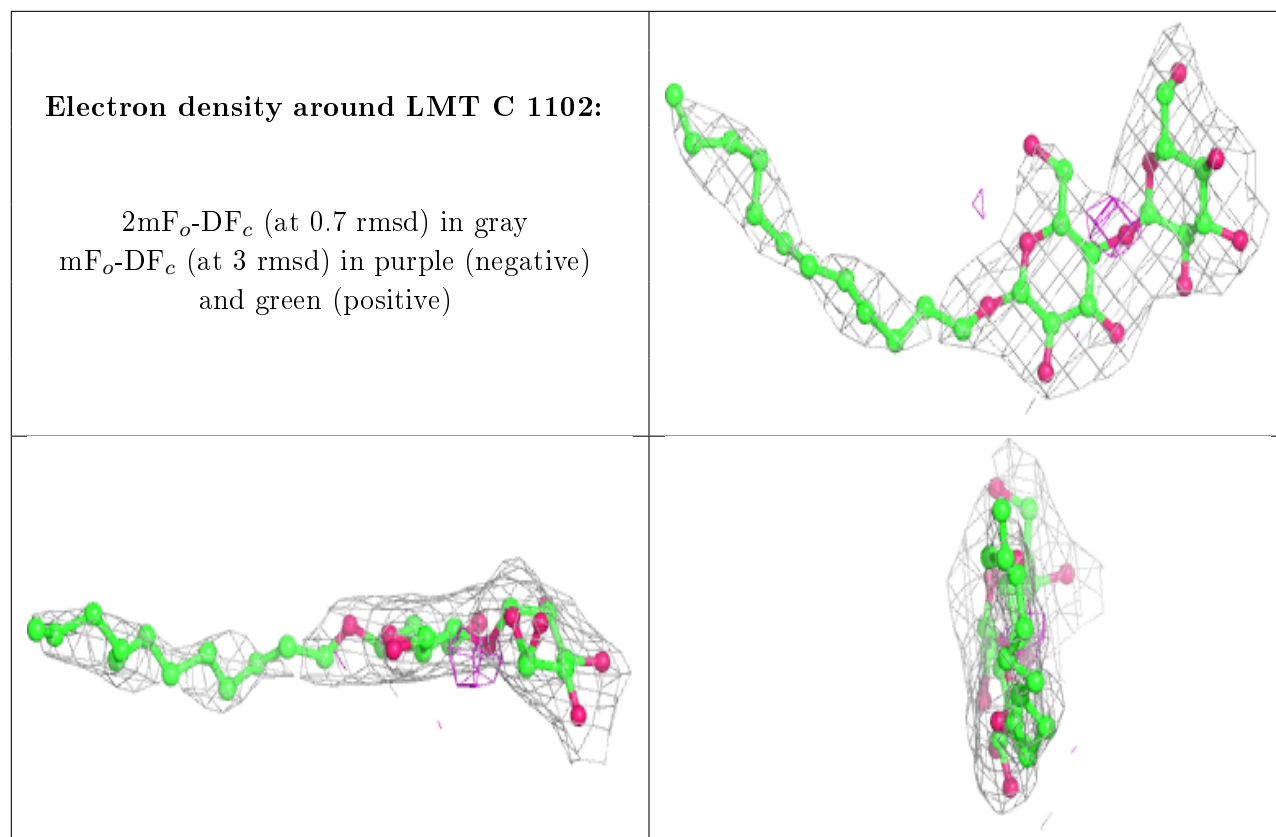
$2mF_o-DF_c$ (at 0.7 rmsd) in gray
 mF_o-DF_c (at 3 rmsd) in purple (negative)
and green (positive)



Electron density around FUA B 1101:

$2mF_o-DF_c$ (at 0.7 rmsd) in gray
 mF_o-DF_c (at 3 rmsd) in purple (negative)
and green (positive)





6.5 Other polymers [i](#)

There are no such residues in this entry.