



Full wwPDB X-ray Structure Validation Report ⓘ

Aug 21, 2023 – 01:36 PM EDT

PDB ID : 2Q5S
Title : Crystal Structure of PPARgamma bound to partial agonist nTZDpa
Authors : Bruning, J.B.; Nettles, K.W.
Deposited on : 2007-06-01
Resolution : 2.05 Å(reported)

This is a Full wwPDB X-ray Structure Validation Report for a publicly released PDB entry.

We welcome your comments at validation@mail.wwpdb.org

A user guide is available at

<https://www.wwpdb.org/validation/2017/XrayValidationReportHelp>

with specific help available everywhere you see the ⓘ symbol.

The types of validation reports are described at

<http://www.wwpdb.org/validation/2017/FAQs#types>.

The following versions of software and data (see [references ⓘ](#)) were used in the production of this report:

MolProbity : 4.02b-467
Mogul : 1.8.5 (274361), CSD as541be (2020)
Xtriage (Phenix) : 1.13
EDS : 2.35
buster-report : 1.1.7 (2018)
Percentile statistics : 20191225.v01 (using entries in the PDB archive December 25th 2019)
Refmac : 5.8.0158
CCP4 : 7.0.044 (Gargrove)
Ideal geometry (proteins) : Engh & Huber (2001)
Ideal geometry (DNA, RNA) : Parkinson et al. (1996)
Validation Pipeline (wwPDB-VP) : 2.35

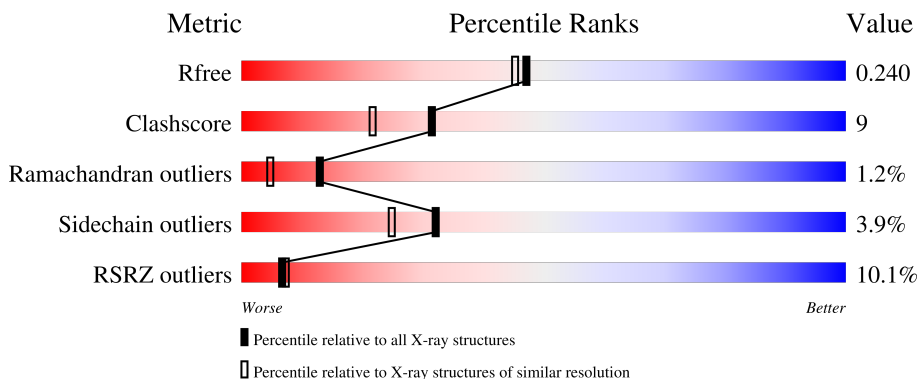
1 Overall quality at a glance

The following experimental techniques were used to determine the structure:

X-RAY DIFFRACTION

The reported resolution of this entry is 2.05 Å.

Percentile scores (ranging between 0-100) for global validation metrics of the entry are shown in the following graphic. The table shows the number of entries on which the scores are based.



Metric	Whole archive (#Entries)	Similar resolution (#Entries, resolution range(Å))
R_{free}	130704	1692 (2.04-2.04)
Clashscore	141614	1773 (2.04-2.04)
Ramachandran outliers	138981	1752 (2.04-2.04)
Sidechain outliers	138945	1752 (2.04-2.04)
RSRZ outliers	127900	1672 (2.04-2.04)

The table below summarises the geometric issues observed across the polymeric chains and their fit to the electron density. The red, orange, yellow and green segments of the lower bar indicate the fraction of residues that contain outliers for ≥ 3 , 2, 1 and 0 types of geometric quality criteria respectively. A grey segment represents the fraction of residues that are not modelled. The numeric value for each fraction is indicated below the corresponding segment, with a dot representing fractions $\leq 5\%$. The upper red bar (where present) indicates the fraction of residues that have poor fit to the electron density. The numeric value is given above the bar.

Mol	Chain	Length	Quality of chain
1	A	274	
1	B	274	

2 Entry composition i

There are 3 unique types of molecules in this entry. The entry contains 4432 atoms, of which 0 are hydrogens and 0 are deuteriums.

In the tables below, the ZeroOcc column contains the number of atoms modelled with zero occupancy, the AltConf column contains the number of residues with at least one atom in alternate conformation and the Trace column contains the number of residues modelled with at most 2 atoms.

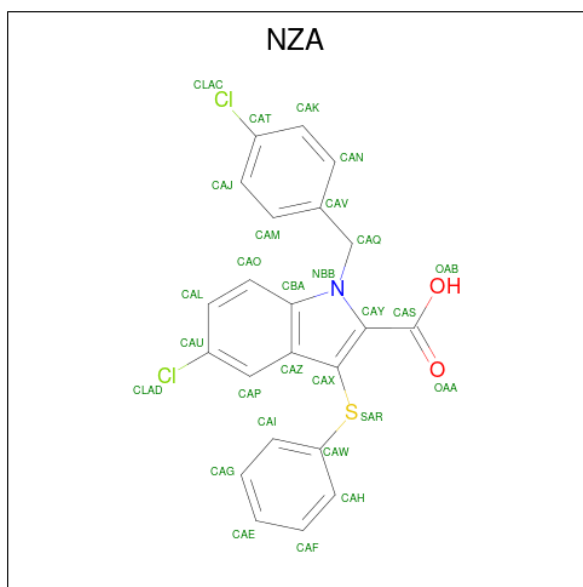
- Molecule 1 is a protein called Peroxisome Proliferator-Activated Receptor gamma.

Mol	Chain	Residues	Atoms					ZeroOcc	AltConf	Trace
			Total	C	N	O	S			
1	A	256	Total 2076	C 1350	N 333	O 382	S 11	0	8	0
1	B	258	Total 2036	C 1317	N 332	O 377	S 10	0	3	0

There are 2 discrepancies between the modelled and reference sequences:

Chain	Residue	Modelled	Actual	Comment	Reference
A	204	SER	-	expression tag	UNP P37231
B	204	SER	-	expression tag	UNP P37231

- Molecule 2 is 5-CHLORO-1-(4-CHLOROBENZYL)-3-(PHENYLTHIO)-1H-INDOLE-2-CARBOXYLIC ACID (three-letter code: NZA) (formula: C₂₂H₁₅Cl₂NO₂S).



Mol	Chain	Residues	Atoms					ZeroOcc	AltConf	
			Total	C	Cl	N	O			S
2	A	1	Total 28	C 22	Cl 2	N 1	O 2	S 1	0	0

Continued on next page...

Continued from previous page...

Mol	Chain	Residues	Atoms					ZeroOcc	AltConf	
			Total	C	Cl	N	O			S
2	B	1	28	22	2	1	2	1	0	0

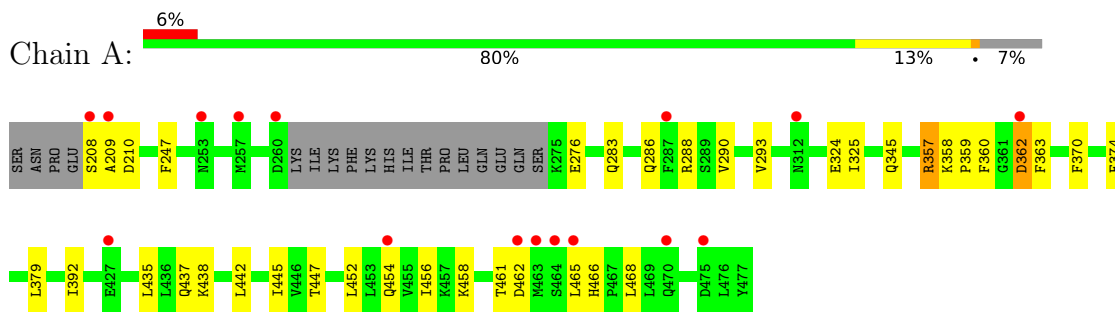
- Molecule 3 is water.

Mol	Chain	Residues	Atoms		ZeroOcc	AltConf
3	A	136	Total	O	0	0
			136	136		
3	B	128	Total	O	0	0
			128	128		

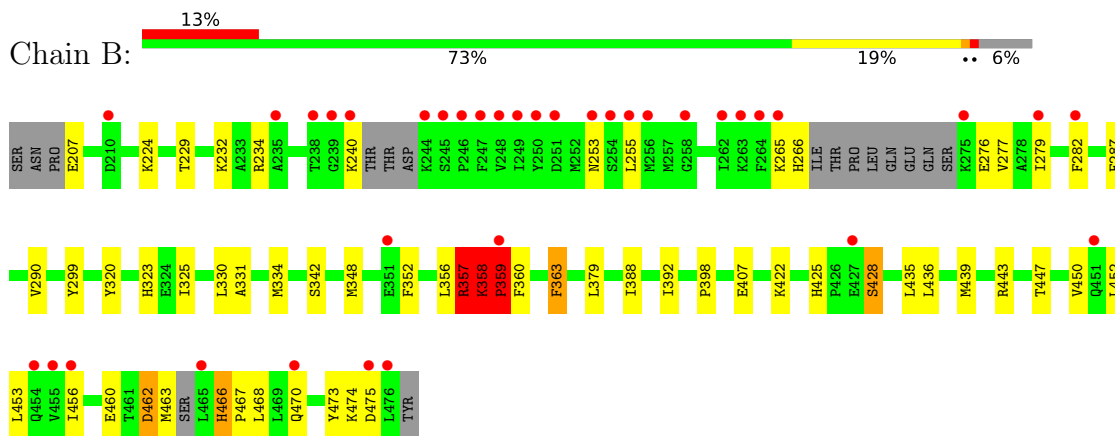
3 Residue-property plots [i](#)

These plots are drawn for all protein, RNA, DNA and oligosaccharide chains in the entry. The first graphic for a chain summarises the proportions of the various outlier classes displayed in the second graphic. The second graphic shows the sequence view annotated by issues in geometry and electron density. Residues are color-coded according to the number of geometric quality criteria for which they contain at least one outlier: green = 0, yellow = 1, orange = 2 and red = 3 or more. A red dot above a residue indicates a poor fit to the electron density ($RSRZ > 2$). Stretches of 2 or more consecutive residues without any outlier are shown as a green connector. Residues present in the sample, but not in the model, are shown in grey.

- Molecule 1: Peroxisome Proliferator-Activated Receptor gamma



- Molecule 1: Peroxisome Proliferator-Activated Receptor gamma



4 Data and refinement statistics

Property	Value	Source
Space group	C 1 2 1	Depositor
Cell constants a, b, c, α , β , γ	89.71Å 62.19Å 117.96Å 90.00° 101.05° 90.00°	Depositor
Resolution (Å)	9.97 – 2.05 9.97 – 2.05	Depositor EDS
% Data completeness (in resolution range)	99.3 (9.97-2.05) 99.3 (9.97-2.05)	Depositor EDS
R_{merge}	0.06	Depositor
R_{sym}	0.06	Depositor
$\langle I/\sigma(I) \rangle$ ¹	3.22 (at 2.06Å)	Xtrriage
Refinement program	REFMAC 5.2.0019	Depositor
R, R_{free}	0.197 , 0.245 0.196 , 0.240	Depositor DCC
R_{free} test set	1992 reflections (5.03%)	wwPDB-VP
Wilson B-factor (Å ²)	31.0	Xtrriage
Anisotropy	0.099	Xtrriage
Bulk solvent k_{sol} (e/Å ³), B_{sol} (Å ²)	0.45 , 69.9	EDS
L-test for twinning ²	$\langle L \rangle = 0.49$, $\langle L^2 \rangle = 0.33$	Xtrriage
Estimated twinning fraction	No twinning to report.	Xtrriage
F_o, F_c correlation	0.95	EDS
Total number of atoms	4432	wwPDB-VP
Average B, all atoms (Å ²)	25.0	wwPDB-VP

Xtrriage's analysis on translational NCS is as follows: *The largest off-origin peak in the Patterson function is 6.98% of the height of the origin peak. No significant pseudotranslation is detected.*

¹Intensities estimated from amplitudes.

²Theoretical values of $\langle |L| \rangle$, $\langle L^2 \rangle$ for acentric reflections are 0.5, 0.333 respectively for untwinned datasets, and 0.375, 0.2 for perfectly twinned datasets.

5 Model quality [i](#)

5.1 Standard geometry [i](#)

Bond lengths and bond angles in the following residue types are not validated in this section: NZA

The Z score for a bond length (or angle) is the number of standard deviations the observed value is removed from the expected value. A bond length (or angle) with $|Z| > 5$ is considered an outlier worth inspection. RMSZ is the root-mean-square of all Z scores of the bond lengths (or angles).

Mol	Chain	Bond lengths		Bond angles	
		RMSZ	# Z >5	RMSZ	# Z >5
1	A	0.45	0/2135	0.60	0/2879
1	B	0.48	2/2078 (0.1%)	0.61	3/2805 (0.1%)
All	All	0.46	2/4213 (0.0%)	0.60	3/5684 (0.1%)

Chiral center outliers are detected by calculating the chiral volume of a chiral center and verifying if the center is modelled as a planar moiety or with the opposite hand. A planarity outlier is detected by checking planarity of atoms in a peptide group, atoms in a mainchain group or atoms of a sidechain that are expected to be planar.

Mol	Chain	#Chirality outliers	#Planarity outliers
1	A	0	1
1	B	1	2
All	All	1	3

All (2) bond length outliers are listed below:

Mol	Chain	Res	Type	Atoms	Z	Observed(Å)	Ideal(Å)
1	B	359	PRO	N-CD	6.44	1.56	1.47
1	B	240	LYS	C-O	5.17	1.33	1.23

All (3) bond angle outliers are listed below:

Mol	Chain	Res	Type	Atoms	Z	Observed($^{\circ}$)	Ideal($^{\circ}$)
1	B	357	ARG	N-CA-C	6.34	128.12	111.00
1	B	462	ASP	CB-CG-OD2	5.24	123.02	118.30
1	B	357	ARG	CB-CA-C	5.08	120.55	110.40

All (1) chirality outliers are listed below:

Mol	Chain	Res	Type	Atom
1	B	357	ARG	CA

All (3) planarity outliers are listed below:

Mol	Chain	Res	Type	Group
1	A	208	SER	Peptide
1	B	356	LEU	Peptide
1	B	358	LYS	Peptide

5.2 Too-close contacts [i](#)

In the following table, the Non-H and H(model) columns list the number of non-hydrogen atoms and hydrogen atoms in the chain respectively. The H(added) column lists the number of hydrogen atoms added and optimized by MolProbity. The Clashes column lists the number of clashes within the asymmetric unit, whereas Symm-Clashes lists symmetry-related clashes.

Mol	Chain	Non-H	H(model)	H(added)	Clashes	Symm-Clashes
1	A	2076	0	2131	33	0
1	B	2036	0	2038	41	0
2	A	28	0	14	3	0
2	B	28	0	14	5	0
3	A	136	0	0	2	0
3	B	128	0	0	5	0
All	All	4432	0	4197	75	0

The all-atom clashscore is defined as the number of clashes found per 1000 atoms (including hydrogen atoms). The all-atom clashscore for this structure is 9.

All (75) close contacts within the same asymmetric unit are listed below, sorted by their clash magnitude.

Atom-1	Atom-2	Interatomic distance (Å)	Clash overlap (Å)
1:A:357:ARG:HD2	1:A:358:LYS:O	1.55	1.06
1:A:357:ARG:HG3	1:A:357:ARG:HH11	1.20	1.03
1:B:348:MET:HE3	2:B:5001:NZA:HAF	1.43	0.99
1:A:276:GLU:OE1	1:A:357:ARG:NH1	1.97	0.98
1:A:276:GLU:OE2	3:A:7111:HOH:O	1.89	0.91
1:A:357:ARG:CD	1:A:358:LYS:O	2.30	0.80
1:A:437:GLN:HG2	1:B:439:MET:CE	2.11	0.80
1:B:363:PHE:HB2	1:B:452:LEU:HD21	1.68	0.76
1:A:437:GLN:HG2	1:B:439:MET:HE1	1.71	0.72
1:B:279:ILE:HG21	1:B:462:ASP:O	1.90	0.71

Continued on next page...

Continued from previous page...

Atom-1	Atom-2	Interatomic distance (Å)	Clash overlap (Å)
1:B:348:MET:CE	2:B:5001:NZA:HAF	2.19	0.70
1:A:325:ILE:HD11	1:A:392:ILE:HG13	1.74	0.70
1:B:407:GLU:OE1	3:B:5106:HOH:O	2.09	0.69
1:B:229:THR:HG23	3:B:5108:HOH:O	1.92	0.69
1:A:357:ARG:HH11	1:A:357:ARG:CG	2.03	0.68
1:B:466:HIS:H	1:B:467:PRO:CD	2.09	0.66
1:B:266:HIS:HB2	1:B:287:PHE:CD2	2.31	0.65
1:A:437:GLN:HG2	1:B:439:MET:HE3	1.79	0.65
1:A:454:GLN:O	1:A:458:LYS:HG2	1.97	0.64
1:B:466:HIS:H	1:B:467:PRO:HD2	1.64	0.61
1:A:324:GLU:HB3	1:A:442[A]:LEU:HD23	1.83	0.59
1:B:232:LYS:HD2	3:B:5108:HOH:O	2.03	0.59
1:B:325:ILE:HG12	1:B:388[A]:ILE:HG23	1.85	0.59
1:B:363:PHE:HB2	1:B:452:LEU:CD2	2.34	0.58
1:A:359:PRO:HG2	1:A:456:ILE:CD1	2.34	0.57
1:B:456:ILE:O	1:B:460:GLU:HB2	2.08	0.54
1:B:279:ILE:CG2	1:B:462:ASP:O	2.57	0.53
1:B:282:PHE:HZ	1:B:453:LEU:HD23	1.74	0.52
1:A:276:GLU:CD	1:A:357:ARG:HH12	2.10	0.52
1:B:334:MET:HE1	3:B:5020:HOH:O	2.09	0.52
1:B:299:TYR:CD2	1:B:388[B]:ILE:HD11	2.45	0.52
1:A:357:ARG:HG3	1:A:357:ARG:NH1	2.01	0.51
1:B:282:PHE:HZ	1:B:453:LEU:CD2	2.25	0.49
1:B:436:LEU:O	1:B:439:MET:HE2	2.12	0.49
1:B:279:ILE:HG23	1:B:463:MET:HE2	1.95	0.49
1:A:290:VAL:HG21	1:A:466:HIS:CG	2.48	0.48
1:B:359:PRO:HG2	1:B:360:PHE:CD1	2.49	0.48
1:A:370:PHE:CB	1:A:445:ILE:HD11	2.44	0.48
1:B:266:HIS:HB2	1:B:287:PHE:HD2	1.74	0.47
1:A:362:ASP:OD2	1:A:362:ASP:N	2.48	0.47
1:A:288[B]:ARG:HE	2:A:7001:NZA:CAS	2.28	0.47
2:A:7001:NZA:OAB	2:A:7001:NZA:HAQ1	2.15	0.47
1:A:209:ALA:HA	1:A:210:ASP:HA	1.62	0.46
1:A:370:PHE:CZ	1:A:442[A]:LEU:HD12	2.51	0.46
1:A:379:LEU:HD11	1:A:435:LEU:HD13	1.98	0.46
1:A:325:ILE:HD11	1:A:392:ILE:CG1	2.44	0.45
2:A:7001:NZA:CBA	2:A:7001:NZA:HAM	2.45	0.45
1:B:331:ALA:HA	1:B:334:MET:HE3	1.98	0.45
1:B:466:HIS:N	1:B:467:PRO:CD	2.75	0.45
1:B:359:PRO:HD2	1:B:360:PHE:HD1	1.82	0.45
1:B:320:TYR:CZ	1:B:398:PRO:HG2	2.52	0.45

Continued on next page...

Continued from previous page...

Atom-1	Atom-2	Interatomic distance (Å)	Clash overlap (Å)
1:B:379:LEU:HD11	1:B:435:LEU:HD13	2.00	0.44
1:B:357:ARG:HG2	1:B:358:LYS:N	2.33	0.44
1:B:422:LYS:HG3	3:B:5071:HOH:O	2.19	0.43
1:B:330:LEU:HG	1:B:334:MET:HE2	2.00	0.43
1:B:447:THR:O	1:B:450:VAL:HG22	2.19	0.43
1:A:290:VAL:HG13	1:A:468:LEU:HD22	2.01	0.43
2:B:5001:NZA:CBA	2:B:5001:NZA:HAM	2.49	0.43
1:A:374:PHE:HD1	1:A:438:LYS:HG2	1.83	0.42
1:B:425:HIS:HB3	1:B:428:SER:HB2	2.00	0.42
1:B:474:LYS:O	1:B:475:ASP:HB2	2.19	0.42
1:A:363:PHE:CB	1:A:452:LEU:HD21	2.50	0.42
1:B:325:ILE:HD11	1:B:392:ILE:HG13	2.00	0.42
1:B:348:MET:CE	2:B:5001:NZA:CAF	2.94	0.42
1:B:207:GLU:N	1:B:207:GLU:OE2	2.52	0.42
1:A:360:PHE:O	1:A:363:PHE:HD2	2.02	0.41
2:B:5001:NZA:OAB	2:B:5001:NZA:HAQ1	2.20	0.41
1:A:247[B]:PHE:CD1	1:A:345:GLN:O	2.74	0.41
1:A:283:GLN:HA	1:A:286[A]:GLN:HE21	1.86	0.41
1:A:363:PHE:HB2	1:A:452:LEU:CD2	2.51	0.41
1:B:290:VAL:HG21	1:B:473:TYR:HD1	1.85	0.41
1:A:363:PHE:HB3	1:A:452:LEU:HD21	2.02	0.40
1:A:293:VAL:HG11	1:A:468:LEU:HD23	2.03	0.40
1:A:462:ASP:OD1	3:A:7121:HOH:O	2.22	0.40
1:B:255:LEU:HD22	1:B:352:PHE:HZ	1.86	0.40

There are no symmetry-related clashes.

5.3 Torsion angles [\(i\)](#)

5.3.1 Protein backbone [\(i\)](#)

In the following table, the Percentiles column shows the percent Ramachandran outliers of the chain as a percentile score with respect to all X-ray entries followed by that with respect to entries of similar resolution.

The Analysed column shows the number of residues for which the backbone conformation was analysed, and the total number of residues.

Mol	Chain	Analysed	Favoured	Allowed	Outliers	Percentiles
1	A	260/274 (95%)	257 (99%)	3 (1%)	0	100 100

Continued on next page...

Continued from previous page...

Mol	Chain	Analysed	Favoured	Allowed	Outliers	Percentiles
1	B	253/274 (92%)	242 (96%)	5 (2%)	6 (2%)	6 1
All	All	513/548 (94%)	499 (97%)	8 (2%)	6 (1%)	13 5

All (6) Ramachandran outliers are listed below:

Mol	Chain	Res	Type
1	B	357	ARG
1	B	358	LYS
1	B	277	VAL
1	B	265	LYS
1	B	359	PRO
1	B	466	HIS

5.3.2 Protein sidechains [i](#)

In the following table, the Percentiles column shows the percent sidechain outliers of the chain as a percentile score with respect to all X-ray entries followed by that with respect to entries of similar resolution.

The Analysed column shows the number of residues for which the sidechain conformation was analysed, and the total number of residues.

Mol	Chain	Analysed	Rotameric	Outliers	Percentiles
1	A	229/247 (93%)	224 (98%)	5 (2%)	52 46
1	B	219/247 (89%)	207 (94%)	12 (6%)	21 13
All	All	448/494 (91%)	431 (96%)	17 (4%)	32 26

All (17) residues with a non-rotameric sidechain are listed below:

Mol	Chain	Res	Type
1	A	357	ARG
1	A	362	ASP
1	A	447	THR
1	A	461	THR
1	A	465	LEU
1	B	224	LYS
1	B	234	ARG
1	B	253	ASN
1	B	276	GLU
1	B	323	HIS

Continued on next page...

Continued from previous page...

Mol	Chain	Res	Type
1	B	342	SER
1	B	357	ARG
1	B	363	PHE
1	B	428	SER
1	B	443	ARG
1	B	468	LEU
1	B	470	GLN

Sometimes sidechains can be flipped to improve hydrogen bonding and reduce clashes. All (8) such sidechains are listed below:

Mol	Chain	Res	Type
1	A	449	HIS
1	A	454	GLN
1	B	253	ASN
1	B	415	GLN
1	B	430	GLN
1	B	437	GLN
1	B	466	HIS
1	B	470	GLN

5.3.3 RNA [i](#)

There are no RNA molecules in this entry.

5.4 Non-standard residues in protein, DNA, RNA chains [i](#)

There are no non-standard protein/DNA/RNA residues in this entry.

5.5 Carbohydrates [i](#)

There are no monosaccharides in this entry.

5.6 Ligand geometry [i](#)

2 ligands are modelled in this entry.

In the following table, the Counts columns list the number of bonds (or angles) for which Mogul statistics could be retrieved, the number of bonds (or angles) that are observed in the model and the number of bonds (or angles) that are defined in the Chemical Component Dictionary. The

Link column lists molecule types, if any, to which the group is linked. The Z score for a bond length (or angle) is the number of standard deviations the observed value is removed from the expected value. A bond length (or angle) with $|Z| > 2$ is considered an outlier worth inspection. RMSZ is the root-mean-square of all Z scores of the bond lengths (or angles).

Mol	Type	Chain	Res	Link	Bond lengths			Bond angles		
					Counts	RMSZ	# Z > 2	Counts	RMSZ	# Z > 2
2	NZA	B	5001	-	27,31,31	0.99	0	34,44,44	0.99	3 (8%)
2	NZA	A	7001	-	27,31,31	1.15	2 (7%)	34,44,44	1.16	4 (11%)

In the following table, the Chirals column lists the number of chiral outliers, the number of chiral centers analysed, the number of these observed in the model and the number defined in the Chemical Component Dictionary. Similar counts are reported in the Torsion and Rings columns. '2' means no outliers of that kind were identified.

Mol	Type	Chain	Res	Link	Chirals	Torsions	Rings
2	NZA	B	5001	-	-	6/12/12/12	0/4/4/4
2	NZA	A	7001	-	-	6/12/12/12	0/4/4/4

All (2) bond length outliers are listed below:

Mol	Chain	Res	Type	Atoms	Z	Observed(Å)	Ideal(Å)
2	A	7001	NZA	CAY-CAS	2.39	1.54	1.48
2	A	7001	NZA	CAX-SAR	-2.14	1.75	1.78

All (7) bond angle outliers are listed below:

Mol	Chain	Res	Type	Atoms	Z	Observed(°)	Ideal(°)
2	A	7001	NZA	CAV-CAQ-NBB	-4.15	106.18	112.63
2	A	7001	NZA	CAX-CAZ-CBA	-3.07	105.82	114.39
2	B	5001	NZA	CAX-CAZ-CBA	-2.95	106.17	114.39
2	B	5001	NZA	CAV-CAQ-NBB	-2.76	108.34	112.63
2	A	7001	NZA	CAW-SAR-CAX	2.30	107.46	101.93
2	B	5001	NZA	OAA-CAS-CAY	-2.22	118.24	121.30
2	A	7001	NZA	CAY-CAX-SAR	-2.19	124.32	126.77

There are no chirality outliers.

All (12) torsion outliers are listed below:

Mol	Chain	Res	Type	Atoms
2	A	7001	NZA	OAB-CAS-CAY-NBB
2	A	7001	NZA	OAA-CAS-CAY-NBB

Continued on next page...

Continued from previous page...

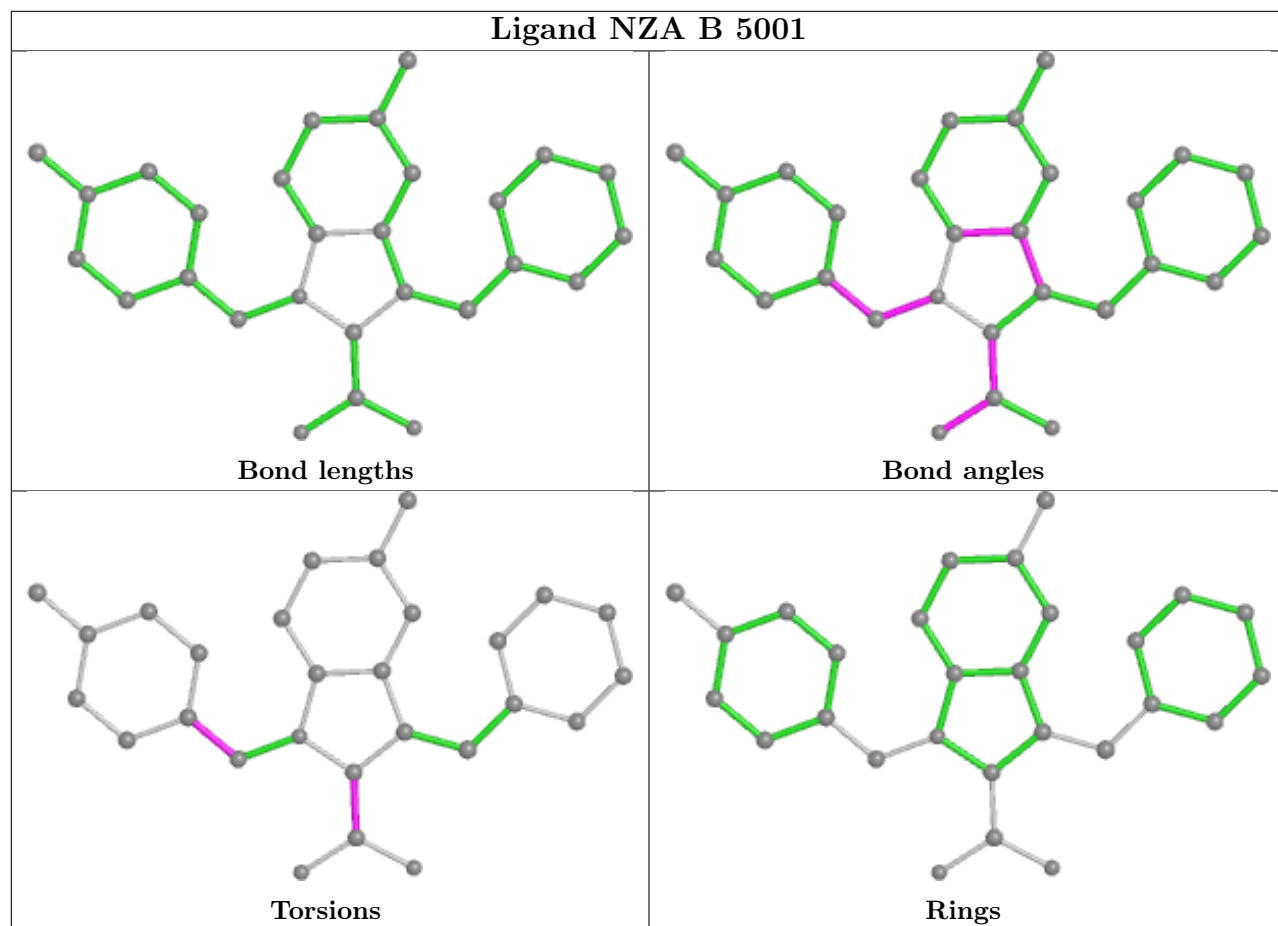
Mol	Chain	Res	Type	Atoms
2	A	7001	NZA	OAB-CAS-CAY-CAX
2	A	7001	NZA	OAA-CAS-CAY-CAX
2	B	5001	NZA	OAB-CAS-CAY-NBB
2	B	5001	NZA	OAA-CAS-CAY-NBB
2	B	5001	NZA	OAB-CAS-CAY-CAX
2	B	5001	NZA	OAA-CAS-CAY-CAX
2	A	7001	NZA	NBB-CAQ-CAV-CAM
2	B	5001	NZA	NBB-CAQ-CAV-CAM
2	A	7001	NZA	NBB-CAQ-CAV-CAN
2	B	5001	NZA	NBB-CAQ-CAV-CAN

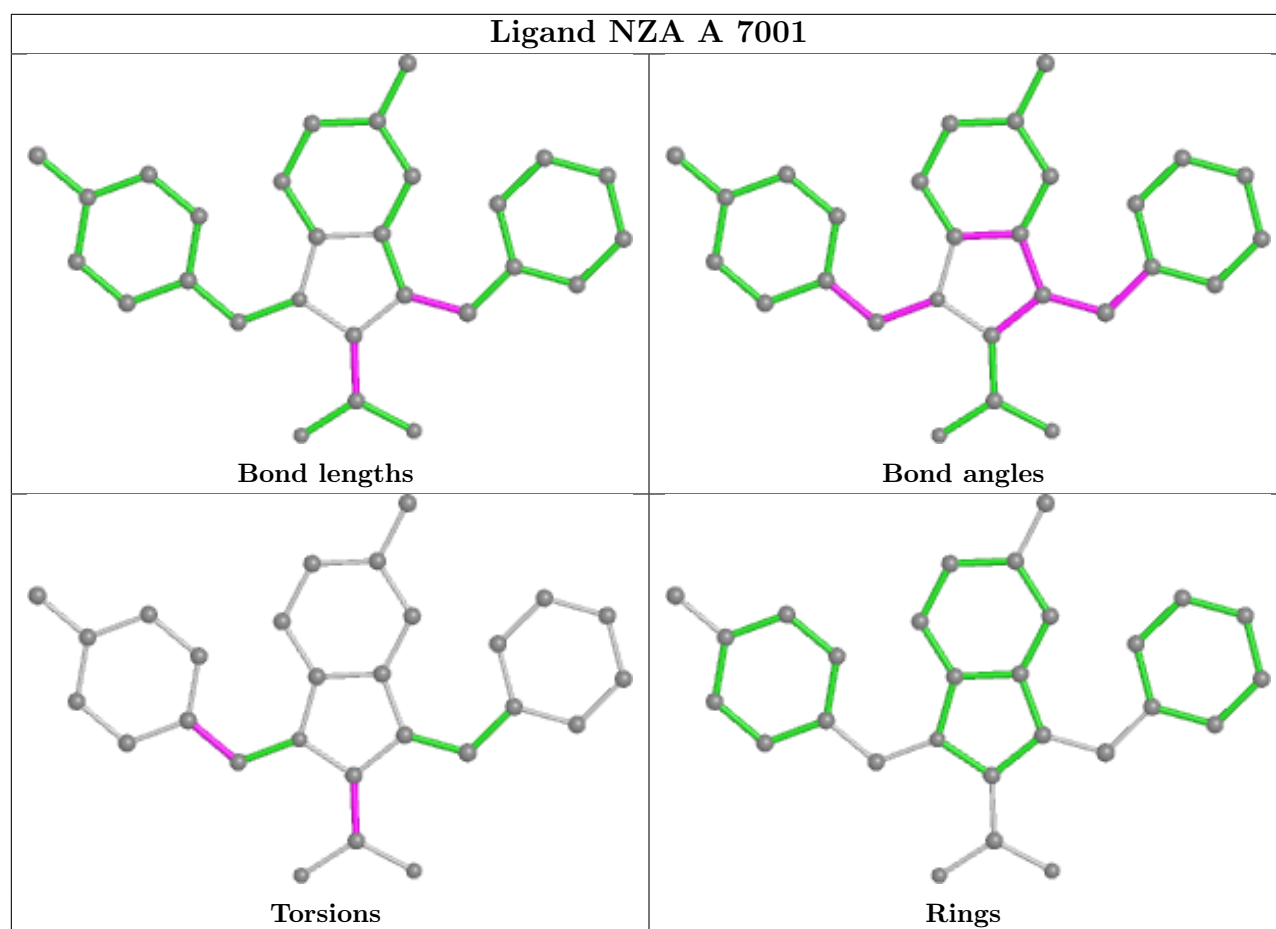
There are no ring outliers.

2 monomers are involved in 8 short contacts:

Mol	Chain	Res	Type	Clashes	Symm-Clashes
2	B	5001	NZA	5	0
2	A	7001	NZA	3	0

The following is a two-dimensional graphical depiction of Mogul quality analysis of bond lengths, bond angles, torsion angles, and ring geometry for all instances of the Ligand of Interest. In addition, ligands with molecular weight > 250 and outliers as shown on the validation Tables will also be included. For torsion angles, if less than 5% of the Mogul distribution of torsion angles is within 10 degrees of the torsion angle in question, then that torsion angle is considered an outlier. Any bond that is central to one or more torsion angles identified as an outlier by Mogul will be highlighted in the graph. For rings, the root-mean-square deviation (RMSD) between the ring in question and similar rings identified by Mogul is calculated over all ring torsion angles. If the average RMSD is greater than 60 degrees and the minimal RMSD between the ring in question and any Mogul-identified rings is also greater than 60 degrees, then that ring is considered an outlier. The outliers are highlighted in purple. The color gray indicates Mogul did not find sufficient equivalents in the CSD to analyse the geometry.





5.7 Other polymers [i](#)

There are no such residues in this entry.

5.8 Polymer linkage issues [i](#)

There are no chain breaks in this entry.

6 Fit of model and data

6.1 Protein, DNA and RNA chains

In the following table, the column labelled ‘#RSRZ > 2’ contains the number (and percentage) of RSRZ outliers, followed by percent RSRZ outliers for the chain as percentile scores relative to all X-ray entries and entries of similar resolution. The OWAB column contains the minimum, median, 95th percentile and maximum values of the occupancy-weighted average B-factor per residue. The column labelled ‘Q < 0.9’ lists the number of (and percentage) of residues with an average occupancy less than 0.9.

Mol	Chain	Analysed	<RSRZ>	#RSRZ>2	OWAB(Å ²)	Q<0.9
1	A	256/274 (93%)	0.14	16 (6%) 20 21	10, 20, 37, 42	6 (2%)
1	B	258/274 (94%)	0.47	36 (13%) 2 2	11, 23, 46, 52	0
All	All	514/548 (93%)	0.31	52 (10%) 7 7	10, 21, 42, 52	6 (1%)

All (52) RSRZ outliers are listed below:

Mol	Chain	Res	Type	RSRZ
1	A	208	SER	6.5
1	B	255	LEU	5.9
1	A	260	ASP	5.7
1	B	263	LYS	5.2
1	B	249	ILE	5.1
1	B	262	ILE	4.8
1	B	238	THR	4.8
1	A	287	PHE	4.6
1	B	456	ILE	4.5
1	B	254	SER	4.2
1	A	462	ASP	4.1
1	B	258	GLY	4.0
1	B	282	PHE	3.9
1	B	248	VAL	3.9
1	B	454	GLN	3.7
1	A	464	SER	3.6
1	B	265	LYS	3.5
1	B	246	PRO	3.4
1	B	465	LEU	3.4
1	A	209	ALA	3.1
1	B	247	PHE	3.1
1	B	240	LYS	3.0
1	A	454	GLN	3.0
1	B	279	ILE	3.0

Continued on next page...

Continued from previous page...

Mol	Chain	Res	Type	RSRZ
1	A	257	MET	3.0
1	B	244	LYS	3.0
1	B	245	SER	3.0
1	A	463	MET	2.9
1	A	362	ASP	2.9
1	B	256	MET	2.9
1	B	239	GLY	2.9
1	A	253	ASN	2.9
1	B	455	VAL	2.8
1	B	427	GLU	2.8
1	B	275	LYS	2.6
1	B	253	ASN	2.6
1	B	451	GLN	2.6
1	A	475	ASP	2.5
1	B	251	ASP	2.5
1	B	470	GLN	2.5
1	B	351	GLU	2.4
1	B	475	ASP	2.3
1	A	427	GLU	2.2
1	B	250	TYR	2.2
1	B	210	ASP	2.2
1	B	264	PHE	2.2
1	B	235	ALA	2.2
1	A	312	ASN	2.1
1	A	470	GLN	2.1
1	A	465	LEU	2.1
1	B	476	LEU	2.0
1	B	359	PRO	2.0

6.2 Non-standard residues in protein, DNA, RNA chains [i](#)

There are no non-standard protein/DNA/RNA residues in this entry.

6.3 Carbohydrates [i](#)

There are no monosaccharides in this entry.

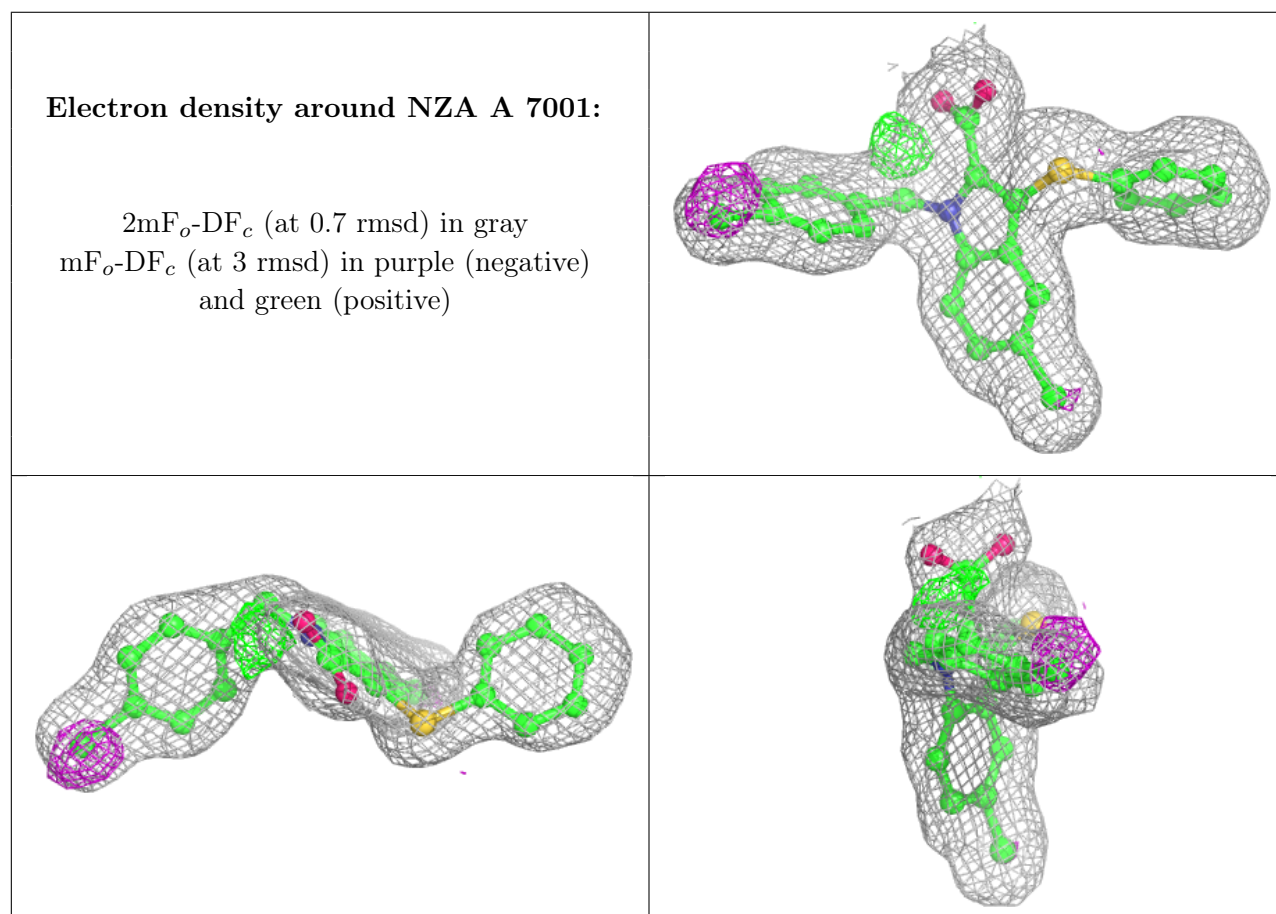
6.4 Ligands [i](#)

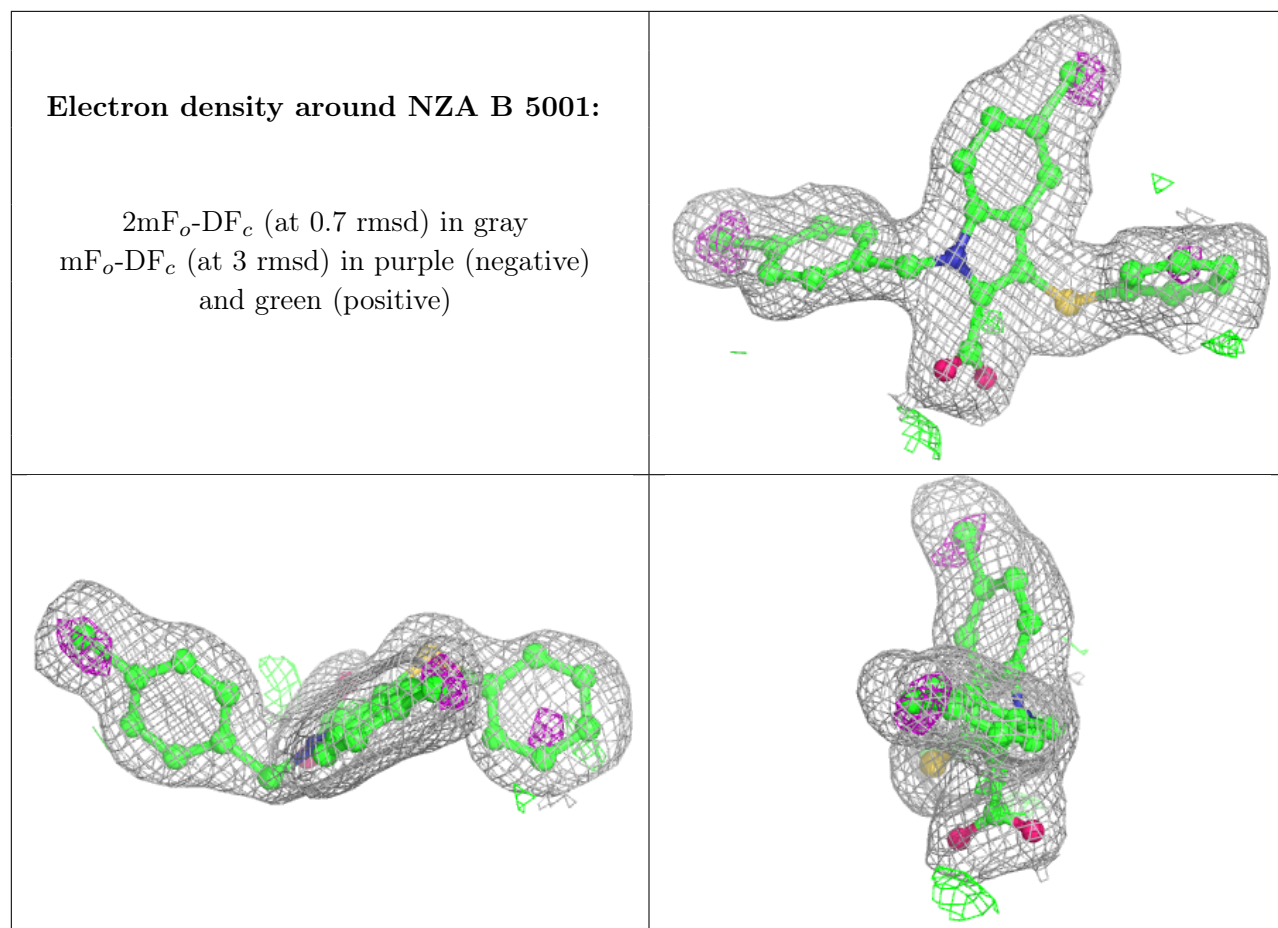
In the following table, the Atoms column lists the number of modelled atoms in the group and the number defined in the chemical component dictionary. The B-factors column lists the minimum,

median, 95th percentile and maximum values of B factors of atoms in the group. The column labelled 'Q< 0.9' lists the number of atoms with occupancy less than 0.9.

Mol	Type	Chain	Res	Atoms	RSCC	RSR	B-factors(Å ²)	Q<0.9
2	NZA	A	7001	28/28	0.88	0.13	30,32,36,36	0
2	NZA	B	5001	28/28	0.90	0.11	30,33,38,38	0

The following is a graphical depiction of the model fit to experimental electron density of all instances of the Ligand of Interest. In addition, ligands with molecular weight > 250 and outliers as shown on the geometry validation Tables will also be included. Each fit is shown from different orientation to approximate a three-dimensional view.





6.5 Other polymers [i](#)

There are no such residues in this entry.