



Full wwPDB X-ray Structure Validation Report ⓘ

Jan 17, 2023 – 04:05 AM EST

PDB ID : 2Q78
Title : Crystal structure of a thioesterase-like protein (tm0581) from thermotoga maritima msb8 at 2.20 Å resolution
Authors : Joint Center for Structural Genomics (JCSG)
Deposited on : 2007-06-06
Resolution : 2.20 Å (reported)

This is a Full wwPDB X-ray Structure Validation Report for a publicly released PDB entry.

We welcome your comments at validation@mail.wwpdb.org

A user guide is available at

<https://www.wwpdb.org/validation/2017/XrayValidationReportHelp>

with specific help available everywhere you see the ⓘ symbol.

The types of validation reports are described at

<http://www.wwpdb.org/validation/2017/FAQs#types>.

The following versions of software and data (see [references ⓘ](#)) were used in the production of this report:

MolProbity : 4.02b-467
Mogul : 1.8.5 (274361), CSD as541be (2020)
Xtriage (Phenix) : 1.13
EDS : 2.31.2
buster-report : 1.1.7 (2018)
Percentile statistics : 20191225.v01 (using entries in the PDB archive December 25th 2019)
Refmac : 5.8.0158
CCP4 : 7.0.044 (Gargrove)
Ideal geometry (proteins) : Engh & Huber (2001)
Ideal geometry (DNA, RNA) : Parkinson et al. (1996)
Validation Pipeline (wwPDB-VP) : 2.31.2

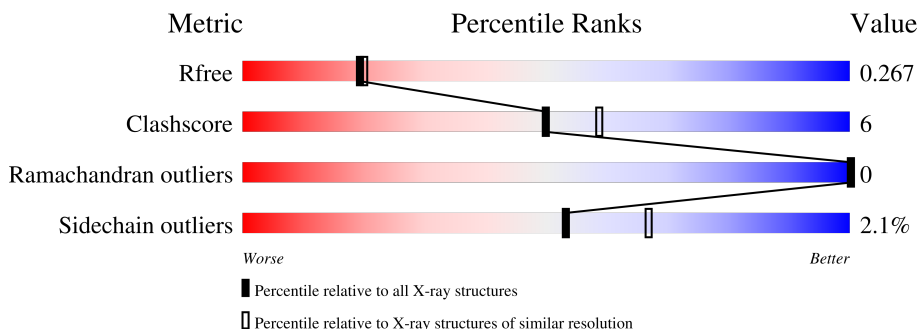
1 Overall quality at a glance

The following experimental techniques were used to determine the structure:

X-RAY DIFFRACTION

The reported resolution of this entry is 2.20 Å.

Percentile scores (ranging between 0-100) for global validation metrics of the entry are shown in the following graphic. The table shows the number of entries on which the scores are based.




Metric	Whole archive (#Entries)	Similar resolution (#Entries, resolution range(Å))
R_{free}	130704	4898 (2.20-2.20)
Clashscore	141614	5594 (2.20-2.20)
Ramachandran outliers	138981	5503 (2.20-2.20)
Sidechain outliers	138945	5504 (2.20-2.20)

The table below summarises the geometric issues observed across the polymeric chains and their fit to the electron density. The red, orange, yellow and green segments of the lower bar indicate the fraction of residues that contain outliers for ≥ 3 , 2, 1 and 0 types of geometric quality criteria respectively. A grey segment represents the fraction of residues that are not modelled. The numeric value for each fraction is indicated below the corresponding segment, with a dot representing fractions $\leq 5\%$

Mol	Chain	Length	Quality of chain
1	A	153	80% 8% 12%
1	B	153	79% 7% 14%
1	C	153	76% 9% 14%
1	D	153	77% 7% • 15%
1	E	153	72% 13% • 14%
1	F	153	78% 9% • 11%
1	G	153	69% 16% • 14%

Continued on next page...

Continued from previous page...

Mol	Chain	Length	Quality of chain
1	H	153	 76% 10% 14%

The following table lists non-polymeric compounds, carbohydrate monomers and non-standard residues in protein, DNA, RNA chains that are outliers for geometric or electron-density-fit criteria:

Mol	Type	Chain	Res	Chirality	Geometry	Clashes	Electron density
2	MLC	A	200	X	-	-	-
2	MLC	B	200	X	-	-	-
2	MLC	C	200	X	-	-	-
2	MLC	D	200	X	-	-	-
2	MLC	E	200	X	-	-	-
2	MLC	F	200	X	-	-	-
2	MLC	G	200	X	-	-	-
2	MLC	H	200	X	-	-	-

2 Entry composition [i](#)

There are 4 unique types of molecules in this entry. The entry contains 9110 atoms, of which 0 are hydrogens and 0 are deuteriums.

In the tables below, the ZeroOcc column contains the number of atoms modelled with zero occupancy, the AltConf column contains the number of residues with at least one atom in alternate conformation and the Trace column contains the number of residues modelled with at most 2 atoms.

- Molecule 1 is a protein called Uncharacterized protein.

Mol	Chain	Residues	Atoms					ZeroOcc	AltConf	Trace
			Total	C	N	O	Se			
1	A	135	1064	679	190	190	5	0	0	0
1	B	131	1061	684	185	186	6	0	6	0
1	C	131	1052	674	189	184	5	0	5	0
1	D	130	1055	676	186	188	5	0	7	0
1	E	131	1027	656	184	182	5	0	2	0
1	F	136	1052	674	188	185	5	0	1	0
1	G	131	1069	683	195	186	5	0	7	0
1	H	131	1014	649	179	181	5	0	0	0

There are 136 discrepancies between the modelled and reference sequences:

Chain	Residue	Modelled	Actual	Comment	Reference
A	-11	MSE	-	expression tag	UNP Q9WZ50
A	-10	GLY	-	expression tag	UNP Q9WZ50
A	-9	SER	-	expression tag	UNP Q9WZ50
A	-8	ASP	-	expression tag	UNP Q9WZ50
A	-7	LYS	-	expression tag	UNP Q9WZ50
A	-6	ILE	-	expression tag	UNP Q9WZ50
A	-5	HIS	-	expression tag	UNP Q9WZ50
A	-4	HIS	-	expression tag	UNP Q9WZ50
A	-3	HIS	-	expression tag	UNP Q9WZ50
A	-2	HIS	-	expression tag	UNP Q9WZ50
A	-1	HIS	-	expression tag	UNP Q9WZ50
A	0	HIS	-	expression tag	UNP Q9WZ50
A	1	MSE	MET	modified residue	UNP Q9WZ50

Continued on next page...

Continued from previous page...

Chain	Residue	Modelled	Actual	Comment	Reference
A	2	MSE	MET	modified residue	UNP Q9WZ50
A	22	MSE	MET	modified residue	UNP Q9WZ50
A	30	MSE	MET	modified residue	UNP Q9WZ50
A	103	MSE	MET	modified residue	UNP Q9WZ50
B	-11	MSE	-	expression tag	UNP Q9WZ50
B	-10	GLY	-	expression tag	UNP Q9WZ50
B	-9	SER	-	expression tag	UNP Q9WZ50
B	-8	ASP	-	expression tag	UNP Q9WZ50
B	-7	LYS	-	expression tag	UNP Q9WZ50
B	-6	ILE	-	expression tag	UNP Q9WZ50
B	-5	HIS	-	expression tag	UNP Q9WZ50
B	-4	HIS	-	expression tag	UNP Q9WZ50
B	-3	HIS	-	expression tag	UNP Q9WZ50
B	-2	HIS	-	expression tag	UNP Q9WZ50
B	-1	HIS	-	expression tag	UNP Q9WZ50
B	0	HIS	-	expression tag	UNP Q9WZ50
B	1	MSE	MET	modified residue	UNP Q9WZ50
B	2	MSE	MET	modified residue	UNP Q9WZ50
B	22	MSE	MET	modified residue	UNP Q9WZ50
B	30	MSE	MET	modified residue	UNP Q9WZ50
B	103	MSE	MET	modified residue	UNP Q9WZ50
C	-11	MSE	-	expression tag	UNP Q9WZ50
C	-10	GLY	-	expression tag	UNP Q9WZ50
C	-9	SER	-	expression tag	UNP Q9WZ50
C	-8	ASP	-	expression tag	UNP Q9WZ50
C	-7	LYS	-	expression tag	UNP Q9WZ50
C	-6	ILE	-	expression tag	UNP Q9WZ50
C	-5	HIS	-	expression tag	UNP Q9WZ50
C	-4	HIS	-	expression tag	UNP Q9WZ50
C	-3	HIS	-	expression tag	UNP Q9WZ50
C	-2	HIS	-	expression tag	UNP Q9WZ50
C	-1	HIS	-	expression tag	UNP Q9WZ50
C	0	HIS	-	expression tag	UNP Q9WZ50
C	1	MSE	MET	modified residue	UNP Q9WZ50
C	2	MSE	MET	modified residue	UNP Q9WZ50
C	22	MSE	MET	modified residue	UNP Q9WZ50
C	30	MSE	MET	modified residue	UNP Q9WZ50
C	103	MSE	MET	modified residue	UNP Q9WZ50
D	-11	MSE	-	expression tag	UNP Q9WZ50
D	-10	GLY	-	expression tag	UNP Q9WZ50
D	-9	SER	-	expression tag	UNP Q9WZ50
D	-8	ASP	-	expression tag	UNP Q9WZ50

Continued on next page...

Continued from previous page...

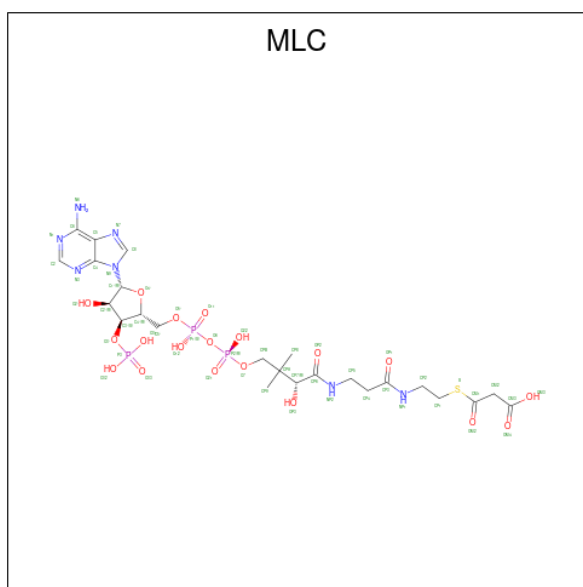
Chain	Residue	Modelled	Actual	Comment	Reference
D	-7	LYS	-	expression tag	UNP Q9WZ50
D	-6	ILE	-	expression tag	UNP Q9WZ50
D	-5	HIS	-	expression tag	UNP Q9WZ50
D	-4	HIS	-	expression tag	UNP Q9WZ50
D	-3	HIS	-	expression tag	UNP Q9WZ50
D	-2	HIS	-	expression tag	UNP Q9WZ50
D	-1	HIS	-	expression tag	UNP Q9WZ50
D	0	HIS	-	expression tag	UNP Q9WZ50
D	1	MSE	MET	modified residue	UNP Q9WZ50
D	2	MSE	MET	modified residue	UNP Q9WZ50
D	22	MSE	MET	modified residue	UNP Q9WZ50
D	30	MSE	MET	modified residue	UNP Q9WZ50
D	103	MSE	MET	modified residue	UNP Q9WZ50
E	-11	MSE	-	expression tag	UNP Q9WZ50
E	-10	GLY	-	expression tag	UNP Q9WZ50
E	-9	SER	-	expression tag	UNP Q9WZ50
E	-8	ASP	-	expression tag	UNP Q9WZ50
E	-7	LYS	-	expression tag	UNP Q9WZ50
E	-6	ILE	-	expression tag	UNP Q9WZ50
E	-5	HIS	-	expression tag	UNP Q9WZ50
E	-4	HIS	-	expression tag	UNP Q9WZ50
E	-3	HIS	-	expression tag	UNP Q9WZ50
E	-2	HIS	-	expression tag	UNP Q9WZ50
E	-1	HIS	-	expression tag	UNP Q9WZ50
E	0	HIS	-	expression tag	UNP Q9WZ50
E	1	MSE	MET	modified residue	UNP Q9WZ50
E	2	MSE	MET	modified residue	UNP Q9WZ50
E	22	MSE	MET	modified residue	UNP Q9WZ50
E	30	MSE	MET	modified residue	UNP Q9WZ50
E	103	MSE	MET	modified residue	UNP Q9WZ50
F	-11	MSE	-	expression tag	UNP Q9WZ50
F	-10	GLY	-	expression tag	UNP Q9WZ50
F	-9	SER	-	expression tag	UNP Q9WZ50
F	-8	ASP	-	expression tag	UNP Q9WZ50
F	-7	LYS	-	expression tag	UNP Q9WZ50
F	-6	ILE	-	expression tag	UNP Q9WZ50
F	-5	HIS	-	expression tag	UNP Q9WZ50
F	-4	HIS	-	expression tag	UNP Q9WZ50
F	-3	HIS	-	expression tag	UNP Q9WZ50
F	-2	HIS	-	expression tag	UNP Q9WZ50
F	-1	HIS	-	expression tag	UNP Q9WZ50
F	0	HIS	-	expression tag	UNP Q9WZ50

Continued on next page...

Continued from previous page...

Chain	Residue	Modelled	Actual	Comment	Reference
F	1	MSE	MET	modified residue	UNP Q9WZ50
F	2	MSE	MET	modified residue	UNP Q9WZ50
F	22	MSE	MET	modified residue	UNP Q9WZ50
F	30	MSE	MET	modified residue	UNP Q9WZ50
F	103	MSE	MET	modified residue	UNP Q9WZ50
G	-11	MSE	-	expression tag	UNP Q9WZ50
G	-10	GLY	-	expression tag	UNP Q9WZ50
G	-9	SER	-	expression tag	UNP Q9WZ50
G	-8	ASP	-	expression tag	UNP Q9WZ50
G	-7	LYS	-	expression tag	UNP Q9WZ50
G	-6	ILE	-	expression tag	UNP Q9WZ50
G	-5	HIS	-	expression tag	UNP Q9WZ50
G	-4	HIS	-	expression tag	UNP Q9WZ50
G	-3	HIS	-	expression tag	UNP Q9WZ50
G	-2	HIS	-	expression tag	UNP Q9WZ50
G	-1	HIS	-	expression tag	UNP Q9WZ50
G	0	HIS	-	expression tag	UNP Q9WZ50
G	1	MSE	MET	modified residue	UNP Q9WZ50
G	2	MSE	MET	modified residue	UNP Q9WZ50
G	22	MSE	MET	modified residue	UNP Q9WZ50
G	30	MSE	MET	modified residue	UNP Q9WZ50
G	103	MSE	MET	modified residue	UNP Q9WZ50
H	-11	MSE	-	expression tag	UNP Q9WZ50
H	-10	GLY	-	expression tag	UNP Q9WZ50
H	-9	SER	-	expression tag	UNP Q9WZ50
H	-8	ASP	-	expression tag	UNP Q9WZ50
H	-7	LYS	-	expression tag	UNP Q9WZ50
H	-6	ILE	-	expression tag	UNP Q9WZ50
H	-5	HIS	-	expression tag	UNP Q9WZ50
H	-4	HIS	-	expression tag	UNP Q9WZ50
H	-3	HIS	-	expression tag	UNP Q9WZ50
H	-2	HIS	-	expression tag	UNP Q9WZ50
H	-1	HIS	-	expression tag	UNP Q9WZ50
H	0	HIS	-	expression tag	UNP Q9WZ50
H	1	MSE	MET	modified residue	UNP Q9WZ50
H	2	MSE	MET	modified residue	UNP Q9WZ50
H	22	MSE	MET	modified residue	UNP Q9WZ50
H	30	MSE	MET	modified residue	UNP Q9WZ50
H	103	MSE	MET	modified residue	UNP Q9WZ50

- Molecule 2 is MALONYL-COENZYME A (three-letter code: MLC) (formula: C₂₄H₃₈N₇O₁₉P₃S).



Mol	Chain	Residues	Atoms					ZeroOcc	AltConf	
			Total	C	N	O	P			S
2	A	1	54	24	7	19	3	1	0	0
2	B	1	54	24	7	19	3	1	0	0
2	C	1	54	24	7	19	3	1	0	0
2	D	1	54	24	7	19	3	1	0	0
2	E	1	54	24	7	19	3	1	0	0
2	F	1	54	24	7	19	3	1	0	0
2	G	1	54	24	7	19	3	1	0	0
2	H	1	54	24	7	19	3	1	0	0

- Molecule 3 is CHLORIDE ION (three-letter code: CL) (formula: Cl).

Mol	Chain	Residues	Atoms	ZeroOcc	AltConf
3	D	1	Total 1 Cl	0	0
3	F	1	Total 1 Cl	0	0

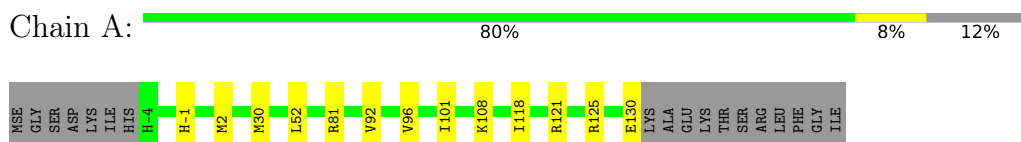
- Molecule 4 is water.

Mol	Chain	Residues	Atoms	ZeroOcc	AltConf
4	A	63	Total O 63 63	0	0
4	B	38	Total O 38 38	0	0
4	C	39	Total O 39 39	0	0
4	D	60	Total O 60 60	0	0
4	E	9	Total O 9 9	0	0
4	F	29	Total O 29 29	0	0
4	G	17	Total O 17 17	0	0
4	H	27	Total O 27 27	0	0

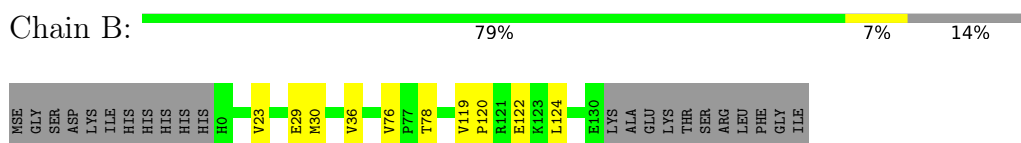
3 Residue-property plots [i](#)

These plots are drawn for all protein, RNA, DNA and oligosaccharide chains in the entry. The first graphic for a chain summarises the proportions of the various outlier classes displayed in the second graphic. The second graphic shows the sequence view annotated by issues in geometry. Residues are color-coded according to the number of geometric quality criteria for which they contain at least one outlier: green = 0, yellow = 1, orange = 2 and red = 3 or more. Stretches of 2 or more consecutive residues without any outlier are shown as a green connector. Residues present in the sample, but not in the model, are shown in grey.

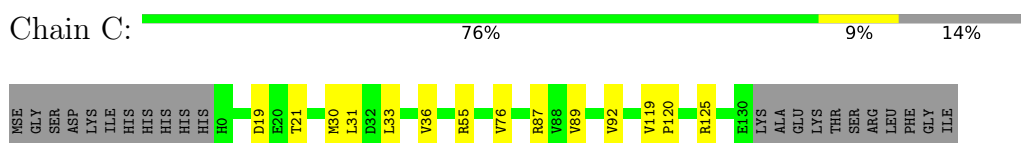
- Molecule 1: Uncharacterized protein



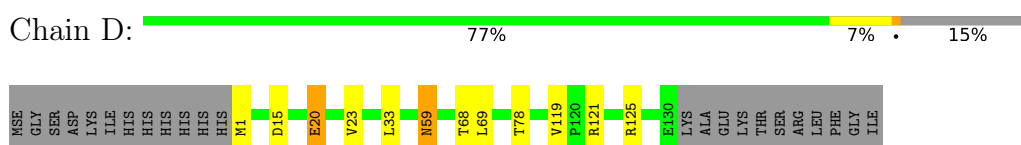
- Molecule 1: Uncharacterized protein



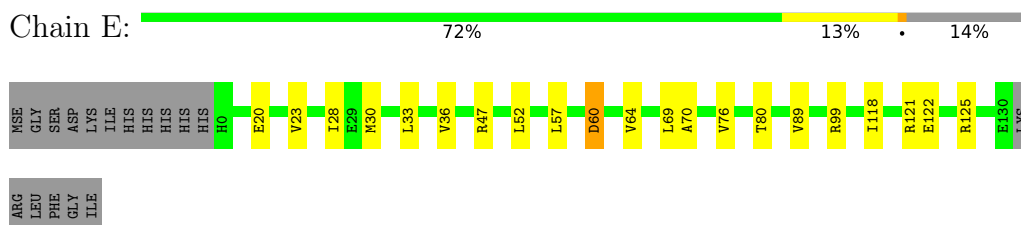
- Molecule 1: Uncharacterized protein



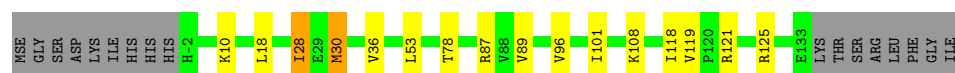
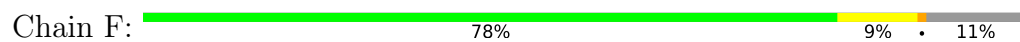
- Molecule 1: Uncharacterized protein



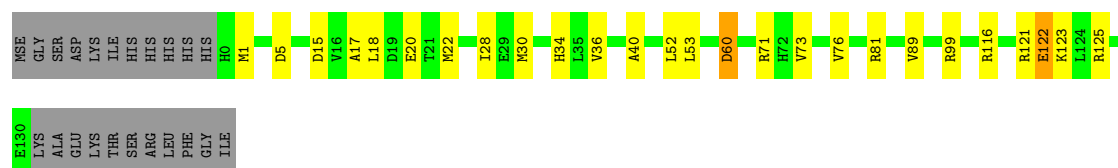
- Molecule 1: Uncharacterized protein



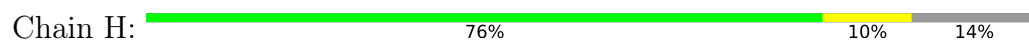
- Molecule 1: Uncharacterized protein



● Molecule 1: Uncharacterized protein



● Molecule 1: Uncharacterized protein



4 Data and refinement statistics

Property	Value	Source
Space group	P 21 21 21	Depositor
Cell constants a, b, c, α , β , γ	60.35Å 90.71Å 230.42Å 90.00° 90.00° 90.00°	Depositor
Resolution (Å)	29.98 – 2.20 29.98 – 2.20	Depositor EDS
% Data completeness (in resolution range)	99.7 (29.98-2.20) 99.7 (29.98-2.20)	Depositor EDS
R_{merge}	0.11	Depositor
R_{sym}	0.11	Depositor
$\langle I/\sigma(I) \rangle$ ¹	1.88 (at 2.20Å)	Xtrriage
Refinement program	REFMAC 5.2.0019, PHENIX	Depositor
R, R_{free}	0.175 , 0.224 0.228 , 0.267	Depositor DCC
R_{free} test set	3296 reflections (5.07%)	wwPDB-VP
Wilson B-factor (Å ²)	38.0	Xtrriage
Anisotropy	0.121	Xtrriage
Bulk solvent k_{sol} (e/Å ³), B_{sol} (Å ²)	0.34 , 57.4	EDS
L-test for twinning ²	$\langle L \rangle = 0.49$, $\langle L^2 \rangle = 0.32$	Xtrriage
Estimated twinning fraction	No twinning to report.	Xtrriage
F_o, F_c correlation	0.94	EDS
Total number of atoms	9110	wwPDB-VP
Average B, all atoms (Å ²)	54.0	wwPDB-VP

Xtrriage's analysis on translational NCS is as follows: *The largest off-origin peak in the Patterson function is 7.31% of the height of the origin peak. No significant pseudotranslation is detected.*

¹Intensities estimated from amplitudes.

²Theoretical values of $\langle |L| \rangle$, $\langle L^2 \rangle$ for acentric reflections are 0.5, 0.333 respectively for untwinned datasets, and 0.375, 0.2 for perfectly twinned datasets.

5 Model quality

5.1 Standard geometry

Bond lengths and bond angles in the following residue types are not validated in this section: CL, MLC

The Z score for a bond length (or angle) is the number of standard deviations the observed value is removed from the expected value. A bond length (or angle) with $|Z| > 5$ is considered an outlier worth inspection. RMSZ is the root-mean-square of all Z scores of the bond lengths (or angles).

Mol	Chain	Bond lengths		Bond angles	
		RMSZ	# Z >5	RMSZ	# Z >5
1	A	0.73	0/1077	0.82	0/1451
1	B	0.66	0/1086	0.72	0/1462
1	C	0.65	0/1075	0.75	0/1446
1	D	0.70	0/1086	0.75	0/1465
1	E	0.49	0/1042	0.65	0/1403
1	F	0.53	0/1066	0.69	0/1438
1	G	0.53	0/1100	0.70	0/1479
1	H	0.55	0/1023	0.68	1/1379 (0.1%)
All	All	0.61	0/8555	0.72	1/11523 (0.0%)

Chiral center outliers are detected by calculating the chiral volume of a chiral center and verifying if the center is modelled as a planar moiety or with the opposite hand. A planarity outlier is detected by checking planarity of atoms in a peptide group, atoms in a mainchain group or atoms of a sidechain that are expected to be planar.

Mol	Chain	#Chirality outliers	#Planarity outliers
1	G	0	1

There are no bond length outliers.

All (1) bond angle outliers are listed below:

Mol	Chain	Res	Type	Atoms	Z	Observed(°)	Ideal(°)
1	H	116	ARG	NE-CZ-NH2	-5.60	117.50	120.30

There are no chirality outliers.

All (1) planarity outliers are listed below:

Mol	Chain	Res	Type	Group
1	G	1	MSE	Peptide

5.2 Too-close contacts [i](#)

In the following table, the Non-H and H(model) columns list the number of non-hydrogen atoms and hydrogen atoms in the chain respectively. The H(added) column lists the number of hydrogen atoms added and optimized by MolProbity. The Clashes column lists the number of clashes within the asymmetric unit, whereas Symm-Clashes lists symmetry-related clashes.

Mol	Chain	Non-H	H(model)	H(added)	Clashes	Symm-Clashes
1	A	1064	0	1082	10	0
1	B	1061	0	1118	9	0
1	C	1052	0	1108	19	0
1	D	1055	0	1107	12	0
1	E	1027	0	1059	16	0
1	F	1052	0	1076	17	0
1	G	1069	0	1120	23	0
1	H	1014	0	1040	13	0
2	A	54	0	33	0	0
2	B	54	0	33	1	0
2	C	54	0	33	0	0
2	D	54	0	33	1	0
2	E	54	0	33	1	0
2	F	54	0	33	1	0
2	G	54	0	33	1	0
2	H	54	0	33	4	0
3	D	1	0	0	0	0
3	F	1	0	0	0	0
4	A	63	0	0	0	0
4	B	38	0	0	1	0
4	C	39	0	0	0	0
4	D	60	0	0	0	0
4	E	9	0	0	0	0
4	F	29	0	0	1	0
4	G	17	0	0	0	0
4	H	27	0	0	0	0
All	All	9110	0	8974	103	0

The all-atom clashscore is defined as the number of clashes found per 1000 atoms (including hydrogen atoms). The all-atom clashscore for this structure is 6.

All (103) close contacts within the same asymmetric unit are listed below, sorted by their clash magnitude.

Atom-1	Atom-2	Interatomic distance (Å)	Clash overlap (Å)
1:A:2:MSE:CE	1:A:2:MSE:SE	2.15	1.43

Continued on next page...

Continued from previous page...

Atom-1	Atom-2	Interatomic distance (Å)	Clash overlap (Å)
1:E:30:MSE:HE3	1:F:121:ARG:HD3	1.55	0.89
1:C:36:VAL:CG1	1:C:76:VAL:HG13	2.10	0.81
1:C:36:VAL:CG1	1:C:76:VAL:CG1	2.60	0.80
1:C:36:VAL:HG12	1:C:76:VAL:HG13	1.69	0.73
1:G:121:ARG:HD3	1:H:30:MSE:HE3	1.70	0.72
1:C:36:VAL:HG11	1:C:76:VAL:CG1	2.19	0.71
1:C:36:VAL:HG12	1:C:76:VAL:CG1	2.22	0.69
1:G:89:VAL:HG11	1:G:99[B]:ARG:HG3	1.73	0.69
1:G:60:ASP:OD1	1:G:60:ASP:N	2.28	0.67
1:F:10:LYS:NZ	4:F:218:HOH:O	2.21	0.66
1:A:96:VAL:HG21	1:A:118:ILE:HD11	1.77	0.66
1:A:121:ARG:HD3	1:B:30[A]:MSE:HE3	1.78	0.66
1:C:36:VAL:HG11	1:C:76:VAL:HG13	1.79	0.65
1:A:30:MSE:HE2	1:A:30:MSE:HA	1.78	0.64
1:E:57:LEU:HD21	1:E:118:ILE:HD13	1.82	0.62
1:A:96:VAL:CG2	1:A:118:ILE:HD11	2.30	0.62
1:H:64:VAL:HG21	2:H:200:MLC:HP81	1.83	0.61
1:F:18:LEU:HD13	1:F:36:VAL:HG21	1.83	0.60
1:H:52:LEU:C	1:H:52:LEU:HD23	2.23	0.59
1:F:101:ILE:HD11	1:F:108:LYS:HG3	1.87	0.57
1:H:89:VAL:HG11	1:H:99:ARG:HD2	1.87	0.57
1:E:30:MSE:HE2	1:F:125:ARG:NH2	2.20	0.56
1:E:64:VAL:HG21	2:E:200:MLC:HP81	1.86	0.56
1:G:18:LEU:HD13	1:G:36[B]:VAL:HG21	1.88	0.55
1:E:30:MSE:HE2	1:F:125:ARG:HH21	1.71	0.55
1:C:30:MSE:HE3	1:D:121:ARG:HD3	1.88	0.55
1:B:36:VAL:HG12	1:B:76:VAL:HG12	1.88	0.54
1:E:20:GLU:O	1:E:23:VAL:HG12	2.07	0.54
1:E:33:LEU:HD21	1:F:125:ARG:HG2	1.90	0.53
1:H:64:VAL:CG2	2:H:200:MLC:HP81	2.37	0.53
1:E:121:ARG:O	1:E:125[B]:ARG:HG3	2.10	0.52
1:A:52:LEU:C	1:A:52:LEU:HD23	2.30	0.52
1:B:29:GLU:O	1:B:30[A]:MSE:HE2	2.11	0.51
1:F:96:VAL:CG2	1:F:118:ILE:HD11	2.41	0.51
1:C:87[A]:ARG:HH11	1:C:89:VAL:HG12	1.76	0.51
1:F:28:ILE:HD12	1:F:28:ILE:N	2.26	0.50
1:G:30:MSE:HE3	1:H:125:ARG:NH2	2.26	0.50
1:G:125[B]:ARG:CZ	1:H:30:MSE:HE1	2.42	0.50
1:F:28:ILE:N	1:F:28:ILE:CD1	2.75	0.49
2:B:200:MLC:O22	2:H:200:MLC:O22	2.31	0.49
1:G:123:LYS:HG2	2:G:200:MLC:H4'	1.93	0.49

Continued on next page...

Continued from previous page...

Atom-1	Atom-2	Interatomic distance (Å)	Clash overlap (Å)
1:C:125[B]:ARG:HG2	1:D:33:LEU:HD11	1.93	0.49
1:E:52:LEU:C	1:E:52:LEU:HD23	2.33	0.49
1:G:52:LEU:HD23	1:G:52:LEU:C	2.33	0.48
1:G:122[B]:GLU:OE2	1:G:125[B]:ARG:HD2	2.13	0.48
1:G:89:VAL:CG1	1:G:99[B]:ARG:HG3	2.39	0.48
1:G:28:ILE:HD12	1:G:28:ILE:N	2.29	0.48
1:G:28:ILE:HD12	1:G:28:ILE:H	1.79	0.48
1:C:36:VAL:CG1	1:C:76:VAL:HG12	2.41	0.48
1:G:20:GLU:OE2	1:G:34[B]:HIS:ND1	2.47	0.48
1:C:87[A]:ARG:NH1	1:C:89:VAL:HG12	2.28	0.47
1:G:22:MSE:HB3	1:G:40:ALA:HB1	1.96	0.47
1:A:101:ILE:HD11	1:A:108:LYS:CD	2.43	0.47
1:G:36[A]:VAL:CG1	1:G:76:VAL:CG1	2.93	0.47
1:F:30:MSE:HA	1:F:30:MSE:HE2	1.96	0.46
1:B:36:VAL:CG1	1:B:76:VAL:HG12	2.45	0.46
1:B:119[B]:VAL:HG21	1:B:124:LEU:HD13	1.97	0.46
1:G:17:ALA:HB2	1:G:81:ARG:NH2	2.31	0.46
1:C:33:LEU:HD21	1:D:125:ARG:HG2	1.97	0.45
1:E:89:VAL:HG11	1:E:99:ARG:HD2	1.97	0.45
1:C:125[A]:ARG:HG2	1:D:33:LEU:HD11	1.98	0.45
1:D:119[A]:VAL:HG13	2:D:200:MLC:H4'	1.97	0.45
1:E:60:ASP:OD1	1:E:60:ASP:N	2.42	0.45
1:G:71:ARG:NH2	1:G:73:VAL:HG12	2.31	0.45
1:H:57:LEU:HD21	1:H:118:ILE:HD13	1.99	0.45
1:A:92:VAL:CG2	1:C:92:VAL:HG23	2.47	0.45
1:C:19:ASP:OD1	1:C:21:THR:HG23	2.17	0.45
1:C:36:VAL:HG12	1:C:76:VAL:O	2.17	0.44
1:B:119[A]:VAL:HG12	1:B:120:PRO:O	2.17	0.44
1:E:30:MSE:HE1	1:F:125:ARG:NE	2.33	0.43
1:B:23[B]:VAL:HG22	1:B:78:THR:HG21	2.00	0.43
1:G:36[A]:VAL:HG11	1:G:76:VAL:CG1	2.49	0.43
1:D:23[B]:VAL:HG22	1:D:78:THR:HG21	1.99	0.43
1:F:87:ARG:NH1	1:F:89:VAL:HG12	2.34	0.43
1:H:30:MSE:HE2	1:H:30:MSE:HA	2.00	0.43
1:H:120:PRO:HD3	2:H:200:MLC:H1'	2.01	0.43
1:E:30:MSE:HE1	1:F:125:ARG:HE	1.84	0.43
1:E:69:LEU:HD12	1:E:70:ALA:N	2.35	0.42
1:H:76:VAL:HG22	1:H:77:PRO:HD2	2.00	0.42
1:A:-1:HIS:O	1:A:-1:HIS:CD2	2.72	0.42
1:C:119[A]:VAL:HG13	1:C:120:PRO:HD2	2.01	0.42
1:A:125:ARG:HH21	1:B:30[A]:MSE:HE2	1.84	0.41

Continued on next page...

Continued from previous page...

Atom-1	Atom-2	Interatomic distance (Å)	Clash overlap (Å)
1:G:15:ASP:OD1	1:G:81:ARG:HG2	2.19	0.41
1:B:30[A]:MSE:CE	4:B:225:HOH:O	2.67	0.41
1:E:36:VAL:HG12	1:E:76:VAL:O	2.20	0.41
1:G:125[A]:ARG:NH1	1:H:33:LEU:HD21	2.36	0.41
1:D:68:THR:C	1:D:69:LEU:HD12	2.40	0.41
1:E:28:ILE:H	1:E:28:ILE:HD12	1.85	0.41
1:D:59:ASN:O	1:D:121:ARG:NH1	2.54	0.41
1:F:119:VAL:HG22	2:F:200:MLC:H4'	2.02	0.41
1:D:20:GLU:HG3	1:D:23[B]:VAL:HG21	2.03	0.41
1:F:36:VAL:HG22	1:F:78:THR:HG22	2.02	0.41
1:C:36:VAL:HG12	1:C:76:VAL:HG12	2.00	0.41
1:D:20:GLU:HA	1:D:23[B]:VAL:HG23	2.03	0.41
1:G:36[A]:VAL:HG12	1:G:76:VAL:CG1	2.51	0.41
1:G:121:ARG:O	1:G:125[B]:ARG:HG3	2.20	0.41
1:F:53:LEU:HD23	1:F:53:LEU:HA	1.93	0.40
1:C:31:LEU:HD23	1:C:31:LEU:HA	1.96	0.40
1:D:20:GLU:O	1:D:23[B]:VAL:HG23	2.20	0.40
1:D:33:LEU:HD23	1:D:33:LEU:HA	1.88	0.40
1:H:36:VAL:HG12	1:H:76:VAL:O	2.22	0.40
1:G:53:LEU:HD12	1:G:116:ARG:HD2	2.04	0.40

There are no symmetry-related clashes.

5.3 Torsion angles [i](#)

5.3.1 Protein backbone [i](#)

In the following table, the Percentiles column shows the percent Ramachandran outliers of the chain as a percentile score with respect to all X-ray entries followed by that with respect to entries of similar resolution.

The Analysed column shows the number of residues for which the backbone conformation was analysed, and the total number of residues.

Mol	Chain	Analysed	Favoured	Allowed	Outliers	Percentiles	
1	A	133/153 (87%)	129 (97%)	4 (3%)	0	100	100
1	B	135/153 (88%)	133 (98%)	2 (2%)	0	100	100
1	C	134/153 (88%)	133 (99%)	1 (1%)	0	100	100
1	D	135/153 (88%)	131 (97%)	4 (3%)	0	100	100

Continued on next page...

Continued from previous page...

Mol	Chain	Analysed	Favoured	Allowed	Outliers	Percentiles	
1	E	131/153 (86%)	127 (97%)	4 (3%)	0	100	100
1	F	135/153 (88%)	134 (99%)	1 (1%)	0	100	100
1	G	136/153 (89%)	135 (99%)	1 (1%)	0	100	100
1	H	129/153 (84%)	127 (98%)	2 (2%)	0	100	100
All	All	1068/1224 (87%)	1049 (98%)	19 (2%)	0	100	100

There are no Ramachandran outliers to report.

5.3.2 Protein sidechains [i](#)

In the following table, the Percentiles column shows the percent sidechain outliers of the chain as a percentile score with respect to all X-ray entries followed by that with respect to entries of similar resolution.

The Analysed column shows the number of residues for which the sidechain conformation was analysed, and the total number of residues.

Mol	Chain	Analysed	Rotameric	Outliers	Percentiles	
1	A	113/126 (90%)	111 (98%)	2 (2%)	59	72
1	B	115/126 (91%)	114 (99%)	1 (1%)	78	88
1	C	112/126 (89%)	111 (99%)	1 (1%)	78	88
1	D	115/126 (91%)	111 (96%)	4 (4%)	36	46
1	E	108/126 (86%)	104 (96%)	4 (4%)	34	43
1	F	109/126 (86%)	107 (98%)	2 (2%)	59	72
1	G	115/126 (91%)	111 (96%)	4 (4%)	36	46
1	H	106/126 (84%)	105 (99%)	1 (1%)	78	88
All	All	893/1008 (89%)	874 (98%)	19 (2%)	53	67

All (19) residues with a non-rotameric sidechain are listed below:

Mol	Chain	Res	Type
1	A	81	ARG
1	A	130	GLU
1	B	122	GLU
1	C	55	ARG
1	D	1	MSE
1	D	15	ASP

Continued on next page...

Continued from previous page...

Mol	Chain	Res	Type
1	D	20	GLU
1	D	59	ASN
1	E	47	ARG
1	E	60	ASP
1	E	80	THR
1	E	122	GLU
1	F	28	ILE
1	F	30	MSE
1	G	5	ASP
1	G	60	ASP
1	G	122[A]	GLU
1	G	122[B]	GLU
1	H	2	MSE

Sometimes sidechains can be flipped to improve hydrogen bonding and reduce clashes. All (2) such sidechains are listed below:

Mol	Chain	Res	Type
1	A	-1	HIS
1	A	0	HIS

5.3.3 RNA [i](#)

There are no RNA molecules in this entry.

5.4 Non-standard residues in protein, DNA, RNA chains [i](#)

There are no non-standard protein/DNA/RNA residues in this entry.

5.5 Carbohydrates [i](#)

There are no monosaccharides in this entry.

5.6 Ligand geometry [i](#)

Of 10 ligands modelled in this entry, 2 are monoatomic - leaving 8 for Mogul analysis.

In the following table, the Counts columns list the number of bonds (or angles) for which Mogul statistics could be retrieved, the number of bonds (or angles) that are observed in the model and the number of bonds (or angles) that are defined in the Chemical Component Dictionary. The

Link column lists molecule types, if any, to which the group is linked. The Z score for a bond length (or angle) is the number of standard deviations the observed value is removed from the expected value. A bond length (or angle) with $|Z| > 2$ is considered an outlier worth inspection. RMSZ is the root-mean-square of all Z scores of the bond lengths (or angles).

Mol	Type	Chain	Res	Link	Bond lengths			Bond angles		
					Counts	RMSZ	# Z > 2	Counts	RMSZ	# Z > 2
2	MLC	F	200	-	47,56,56	1.05	3 (6%)	60,83,83	2.09	8 (13%)
2	MLC	G	200	-	47,56,56	1.17	5 (10%)	60,83,83	2.51	9 (15%)
2	MLC	B	200	-	47,56,56	1.21	3 (6%)	60,83,83	2.50	14 (23%)
2	MLC	C	200	-	47,56,56	1.25	3 (6%)	60,83,83	2.67	9 (15%)
2	MLC	A	200	-	47,56,56	1.29	4 (8%)	60,83,83	2.88	18 (30%)
2	MLC	H	200	-	47,56,56	1.09	5 (10%)	60,83,83	1.78	9 (15%)
2	MLC	E	200	-	47,56,56	1.03	4 (8%)	60,83,83	1.59	11 (18%)
2	MLC	D	200	-	47,56,56	1.16	4 (8%)	60,83,83	2.31	11 (18%)

In the following table, the Chirals column lists the number of chiral outliers, the number of chiral centers analysed, the number of these observed in the model and the number defined in the Chemical Component Dictionary. Similar counts are reported in the Torsion and Rings columns. '-' means no outliers of that kind were identified.

Mol	Type	Chain	Res	Link	Chirals	Torsions	Rings
2	MLC	F	200	-	1/1/13/15	5/50/71/71	0/3/3/3
2	MLC	G	200	-	1/1/13/15	6/50/71/71	0/3/3/3
2	MLC	B	200	-	1/1/13/15	4/50/71/71	0/3/3/3
2	MLC	C	200	-	1/1/13/15	5/50/71/71	0/3/3/3
2	MLC	A	200	-	1/1/13/15	8/50/71/71	0/3/3/3
2	MLC	H	200	-	1/1/13/15	11/50/71/71	0/3/3/3
2	MLC	E	200	-	1/1/13/15	8/50/71/71	0/3/3/3
2	MLC	D	200	-	1/1/13/15	4/50/71/71	0/3/3/3

All (31) bond length outliers are listed below:

Mol	Chain	Res	Type	Atoms	Z	Observed(Å)	Ideal(Å)
2	C	200	MLC	CM2-CM3	5.90	1.60	1.51
2	A	200	MLC	CM2-CM3	5.72	1.59	1.51
2	B	200	MLC	CM2-CM3	5.60	1.59	1.51
2	D	200	MLC	CM2-CM3	4.57	1.58	1.51
2	G	200	MLC	CM2-CM3	4.45	1.57	1.51
2	F	200	MLC	CM2-CM3	3.75	1.56	1.51
2	E	200	MLC	CM1-S	-3.04	1.68	1.76

Continued on next page...

Continued from previous page...

Mol	Chain	Res	Type	Atoms	Z	Observed(Å)	Ideal(Å)
2	H	200	MLC	CM1-S	-3.00	1.68	1.76
2	D	200	MLC	C5-C4	2.80	1.48	1.40
2	H	200	MLC	C5-C4	2.75	1.48	1.40
2	C	200	MLC	C2-N3	2.72	1.36	1.32
2	B	200	MLC	C5-C4	2.63	1.47	1.40
2	H	200	MLC	CM2-CM3	2.62	1.55	1.51
2	A	200	MLC	C5-C4	2.59	1.47	1.40
2	G	200	MLC	C5-C4	2.52	1.47	1.40
2	G	200	MLC	C2-N3	2.50	1.36	1.32
2	E	200	MLC	C5-C4	2.44	1.47	1.40
2	A	200	MLC	OM2-CM1	2.35	1.24	1.21
2	D	200	MLC	CM1-S	-2.29	1.70	1.76
2	C	200	MLC	C5-C4	2.20	1.46	1.40
2	E	200	MLC	C2-N3	2.17	1.35	1.32
2	F	200	MLC	C2-N3	2.16	1.35	1.32
2	F	200	MLC	C5-C4	2.12	1.46	1.40
2	E	200	MLC	CM2-CM3	2.10	1.54	1.51
2	D	200	MLC	C2-N3	2.09	1.35	1.32
2	B	200	MLC	C2-N3	2.07	1.35	1.32
2	A	200	MLC	P3-O3'	2.06	1.63	1.59
2	H	200	MLC	C2-N3	2.05	1.35	1.32
2	G	200	MLC	CM1-S	-2.04	1.71	1.76
2	G	200	MLC	OM3-CM3	-2.03	1.23	1.30
2	H	200	MLC	P3-O3'	2.01	1.63	1.59

All (89) bond angle outliers are listed below:

Mol	Chain	Res	Type	Atoms	Z	Observed(°)	Ideal(°)
2	A	200	MLC	CM2-CM1-S	15.37	132.84	113.69
2	C	200	MLC	CM2-CM1-S	15.21	132.64	113.69
2	G	200	MLC	CM2-CM1-S	14.46	131.71	113.69
2	B	200	MLC	CM2-CM1-S	13.88	130.98	113.69
2	D	200	MLC	CM2-CM1-S	12.47	129.22	113.69
2	F	200	MLC	CM2-CM1-S	11.48	128.00	113.69
2	H	200	MLC	CM2-CM1-S	7.98	123.63	113.69
2	G	200	MLC	OM2-CM1-S	-7.45	112.94	122.61
2	A	200	MLC	OM2-CM1-CM2	-7.02	111.17	123.35
2	C	200	MLC	OM2-CM1-S	-7.01	113.50	122.61
2	E	200	MLC	CM2-CM1-S	6.94	122.34	113.69
2	D	200	MLC	OM2-CM1-S	-5.98	114.85	122.61
2	B	200	MLC	OM2-CM1-CM2	-5.78	113.34	123.35
2	C	200	MLC	OM2-CM1-CM2	-5.50	113.81	123.35

Continued on next page...

Continued from previous page...

Mol	Chain	Res	Type	Atoms	Z	Observed(°)	Ideal(°)
2	F	200	MLC	OM2-CM1-CM2	-5.39	114.00	123.35
2	B	200	MLC	OM2-CM1-S	-5.35	115.66	122.61
2	A	200	MLC	OM3-CM3-OM4	-5.29	110.12	123.30
2	H	200	MLC	OM2-CM1-S	-5.24	115.81	122.61
2	C	200	MLC	OM3-CM3-OM4	-5.15	110.46	123.30
2	A	200	MLC	OM2-CM1-S	-5.12	115.97	122.61
2	B	200	MLC	OM3-CM3-OM4	-4.81	111.31	123.30
2	A	200	MLC	O2'-C2'-C3'	-4.80	97.53	111.17
2	G	200	MLC	OM2-CM1-CM2	-4.64	115.30	123.35
2	D	200	MLC	OM2-CM1-CM2	-4.31	115.89	123.35
2	D	200	MLC	OM3-CM3-OM4	-4.31	112.57	123.30
2	B	200	MLC	N3-C2-N1	-4.10	122.27	128.68
2	C	200	MLC	N3-C2-N1	-4.01	122.41	128.68
2	E	200	MLC	N3-C2-N1	-3.87	122.63	128.68
2	G	200	MLC	OM3-CM3-OM4	-3.86	113.68	123.30
2	A	200	MLC	C3'-C2'-C1'	3.76	108.23	99.89
2	D	200	MLC	N3-C2-N1	-3.76	122.81	128.68
2	H	200	MLC	N3-C2-N1	-3.66	122.96	128.68
2	F	200	MLC	OM2-CM1-S	-3.56	117.99	122.61
2	F	200	MLC	N3-C2-N1	-3.49	123.22	128.68
2	C	200	MLC	C3'-C2'-C1'	3.46	107.56	99.89
2	H	200	MLC	C3'-C2'-C1'	3.42	107.46	99.89
2	A	200	MLC	N3-C2-N1	-3.34	123.45	128.68
2	A	200	MLC	O3'-C3'-C2'	3.32	123.72	111.68
2	G	200	MLC	N3-C2-N1	-3.29	123.53	128.68
2	E	200	MLC	OM2-CM1-S	-3.24	118.41	122.61
2	F	200	MLC	C3'-C2'-C1'	3.12	106.80	99.89
2	A	200	MLC	O31-P3-O3'	-2.99	92.58	105.99
2	F	200	MLC	OM3-CM3-CM2	2.93	123.89	114.54
2	E	200	MLC	P2-O6-P1	-2.89	122.92	132.83
2	B	200	MLC	OM3-CM3-CM2	2.79	123.46	114.54
2	G	200	MLC	C3'-C2'-C1'	2.65	105.76	99.89
2	B	200	MLC	C3'-C2'-C1'	2.64	105.75	99.89
2	H	200	MLC	CP4-CP5-NP2	2.61	117.17	111.90
2	F	200	MLC	OM3-CM3-OM4	-2.59	116.85	123.30
2	H	200	MLC	C4-C5-N7	-2.44	106.85	109.40
2	C	200	MLC	OM3-CM3-CM2	2.44	122.33	114.54
2	G	200	MLC	C4-C5-N7	-2.43	106.86	109.40
2	B	200	MLC	O32-P3-O31	2.40	116.82	107.64
2	A	200	MLC	C2-N1-C6	2.40	122.85	118.75
2	A	200	MLC	N6-C6-N1	2.39	123.54	118.57
2	F	200	MLC	N6-C6-N1	2.38	123.51	118.57

Continued on next page...

Continued from previous page...

Mol	Chain	Res	Type	Atoms	Z	Observed(°)	Ideal(°)
2	B	200	MLC	CP8-CPA-CPB	-2.37	104.37	108.23
2	D	200	MLC	C2-N1-C6	2.36	122.80	118.75
2	E	200	MLC	OM2-CM1-CM2	-2.36	119.25	123.35
2	D	200	MLC	C3'-C2'-C1'	2.36	105.12	99.89
2	H	200	MLC	C2-N1-C6	2.29	122.66	118.75
2	B	200	MLC	P2-O6-P1	-2.28	125.00	132.83
2	E	200	MLC	O32-P3-O31	2.27	116.33	107.64
2	C	200	MLC	O2'-C2'-C3'	-2.24	104.79	111.17
2	A	200	MLC	P2-O6-P1	-2.23	125.16	132.83
2	E	200	MLC	N6-C6-N1	2.22	123.19	118.57
2	B	200	MLC	C2-N1-C6	2.22	122.55	118.75
2	A	200	MLC	OM4-CM3-CM2	2.20	128.51	122.08
2	A	200	MLC	O22-P2-O21	2.20	123.10	112.24
2	D	200	MLC	CP7-CP6-NP2	2.20	120.95	116.58
2	H	200	MLC	O22-P2-O21	2.19	123.04	112.24
2	B	200	MLC	CP8-CPA-CP7	2.18	112.59	108.82
2	A	200	MLC	OP1-CP3-CP4	-2.16	118.06	122.02
2	D	200	MLC	C4-C5-N7	-2.16	107.15	109.40
2	B	200	MLC	CP4-CP5-NP2	-2.14	107.57	111.90
2	A	200	MLC	OM3-CM3-CM2	2.14	121.36	114.54
2	A	200	MLC	CP5-CP4-CP3	-2.13	108.80	112.36
2	E	200	MLC	C3'-C2'-C1'	2.11	104.58	99.89
2	D	200	MLC	OM3-CM3-CM2	2.10	121.25	114.54
2	H	200	MLC	OM3-CM3-OM4	-2.09	118.09	123.30
2	G	200	MLC	P2-O6-P1	-2.09	125.67	132.83
2	A	200	MLC	CP4-CP5-NP2	-2.08	107.69	111.90
2	G	200	MLC	O32-P3-O31	2.05	115.48	107.64
2	E	200	MLC	CP4-CP5-NP2	-2.05	107.76	111.90
2	D	200	MLC	P2-O6-P1	-2.03	125.85	132.83
2	C	200	MLC	C4-C5-N7	-2.03	107.29	109.40
2	E	200	MLC	C4-C5-N7	-2.03	107.29	109.40
2	B	200	MLC	C4-C5-N7	-2.01	107.31	109.40
2	E	200	MLC	C2-N1-C6	2.00	122.18	118.75

All (8) chirality outliers are listed below:

Mol	Chain	Res	Type	Atom
2	A	200	MLC	C3'
2	B	200	MLC	C3'
2	C	200	MLC	C3'
2	D	200	MLC	C3'
2	E	200	MLC	C3'

Continued on next page...

Continued from previous page...

Mol	Chain	Res	Type	Atom
2	F	200	MLC	C3'
2	G	200	MLC	C3'
2	H	200	MLC	C3'

All (51) torsion outliers are listed below:

Mol	Chain	Res	Type	Atoms
2	A	200	MLC	C2'-C3'-O3'-P3
2	A	200	MLC	C5'-O5'-P1-O11
2	C	200	MLC	C3'-O3'-P3-O32
2	C	200	MLC	C5'-O5'-P1-O11
2	D	200	MLC	C3'-O3'-P3-O32
2	E	200	MLC	C2'-C3'-O3'-P3
2	E	200	MLC	C3'-O3'-P3-O33
2	E	200	MLC	O4'-C4'-C5'-O5'
2	E	200	MLC	C5'-O5'-P1-O6
2	G	200	MLC	C5'-O5'-P1-O11
2	G	200	MLC	C5'-O5'-P1-O6
2	H	200	MLC	C5'-O5'-P1-O6
2	H	200	MLC	CP3-CP4-CP5-NP2
2	H	200	MLC	S-CP1-CP2-NP1
2	B	200	MLC	C3'-C4'-C5'-O5'
2	B	200	MLC	O4'-C4'-C5'-O5'
2	E	200	MLC	C3'-C4'-C5'-O5'
2	G	200	MLC	O4'-C4'-C5'-O5'
2	H	200	MLC	C3'-C4'-C5'-O5'
2	G	200	MLC	C3'-C4'-C5'-O5'
2	H	200	MLC	O4'-C4'-C5'-O5'
2	D	200	MLC	C2'-C3'-O3'-P3
2	D	200	MLC	S-CP1-CP2-NP1
2	A	200	MLC	C3'-C4'-C5'-O5'
2	F	200	MLC	C2'-C3'-O3'-P3
2	H	200	MLC	CP4-CP5-NP2-CP6
2	H	200	MLC	OM2-CM1-S-CP1
2	A	200	MLC	C3'-O3'-P3-O33
2	H	200	MLC	CM2-CM1-S-CP1
2	A	200	MLC	C3'-O3'-P3-O31
2	A	200	MLC	C5'-O5'-P1-O6
2	C	200	MLC	C5'-O5'-P1-O6
2	G	200	MLC	C3'-O3'-P3-O32
2	A	200	MLC	P1-O6-P2-O21
2	F	200	MLC	P1-O6-P2-O21

Continued on next page...

Continued from previous page...

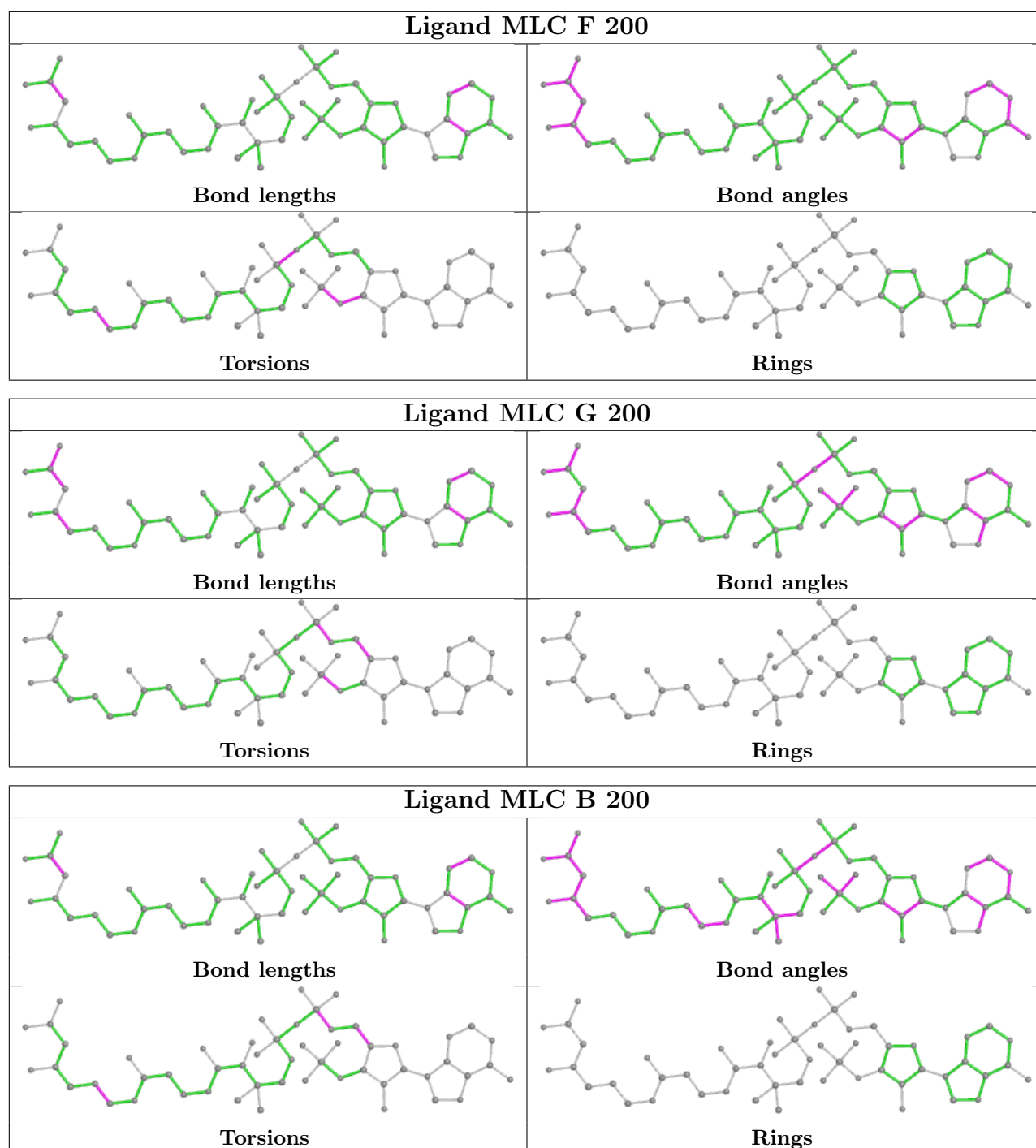
Mol	Chain	Res	Type	Atoms
2	E	200	MLC	C5'-O5'-P1-O11
2	E	200	MLC	C5'-O5'-P1-O12
2	G	200	MLC	C5'-O5'-P1-O12
2	H	200	MLC	C5'-O5'-P1-O11
2	H	200	MLC	C5'-O5'-P1-O12
2	D	200	MLC	C4'-C3'-O3'-P3
2	C	200	MLC	C3'-C4'-C5'-O5'
2	C	200	MLC	O4'-C4'-C5'-O5'
2	B	200	MLC	S-CP1-CP2-NP1
2	E	200	MLC	S-CP1-CP2-NP1
2	F	200	MLC	S-CP1-CP2-NP1
2	A	200	MLC	C3'-O3'-P3-O32
2	F	200	MLC	C3'-O3'-P3-O31
2	H	200	MLC	C3'-O3'-P3-O31
2	F	200	MLC	P1-O6-P2-O22
2	B	200	MLC	C5'-O5'-P1-O11

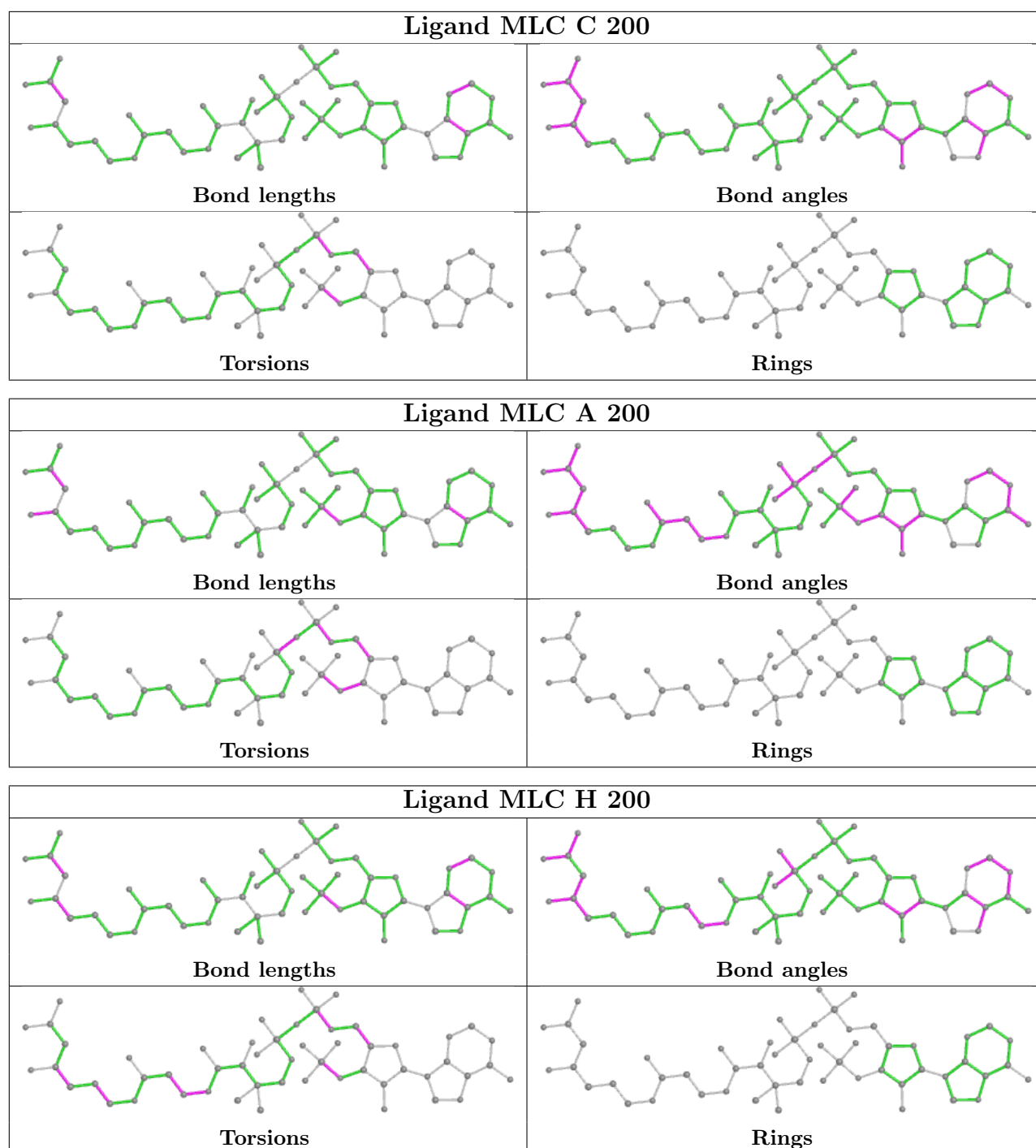
There are no ring outliers.

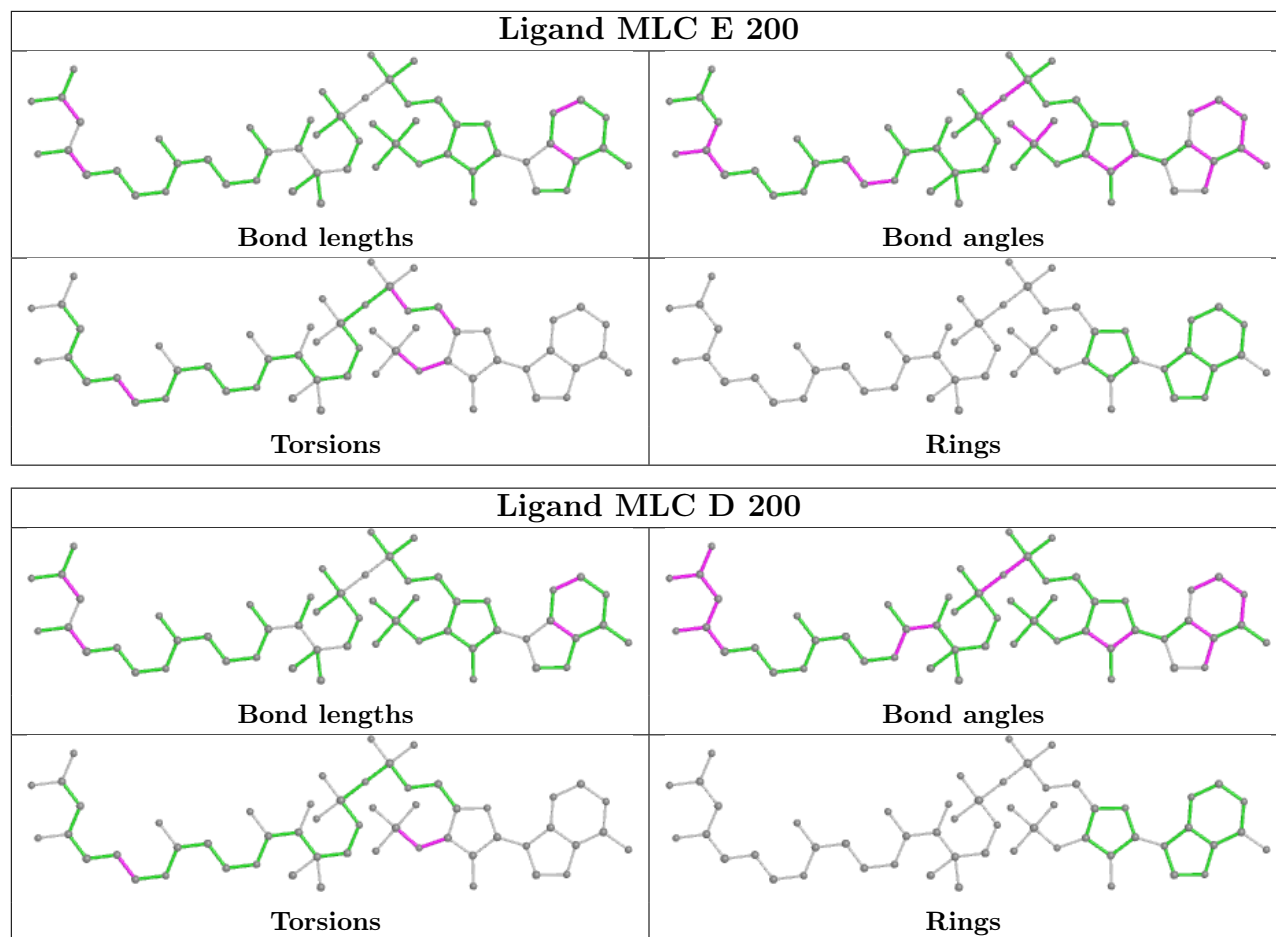
6 monomers are involved in 8 short contacts:

Mol	Chain	Res	Type	Clashes	Symm-Clashes
2	F	200	MLC	1	0
2	G	200	MLC	1	0
2	B	200	MLC	1	0
2	H	200	MLC	4	0
2	E	200	MLC	1	0
2	D	200	MLC	1	0

The following is a two-dimensional graphical depiction of Mogul quality analysis of bond lengths, bond angles, torsion angles, and ring geometry for all instances of the Ligand of Interest. In addition, ligands with molecular weight > 250 and outliers as shown on the validation Tables will also be included. For torsion angles, if less than 5% of the Mogul distribution of torsion angles is within 10 degrees of the torsion angle in question, then that torsion angle is considered an outlier. Any bond that is central to one or more torsion angles identified as an outlier by Mogul will be highlighted in the graph. For rings, the root-mean-square deviation (RMSD) between the ring in question and similar rings identified by Mogul is calculated over all ring torsion angles. If the average RMSD is greater than 60 degrees and the minimal RMSD between the ring in question and any Mogul-identified rings is also greater than 60 degrees, then that ring is considered an outlier. The outliers are highlighted in purple. The color gray indicates Mogul did not find sufficient equivalents in the CSD to analyse the geometry.







5.7 Other polymers [i](#)

There are no such residues in this entry.

5.8 Polymer linkage issues [i](#)

There are no chain breaks in this entry.

6 Fit of model and data [i](#)

6.1 Protein, DNA and RNA chains [i](#)

Unable to reproduce the depositors R factor - this section is therefore empty.

6.2 Non-standard residues in protein, DNA, RNA chains [i](#)

Unable to reproduce the depositors R factor - this section is therefore empty.

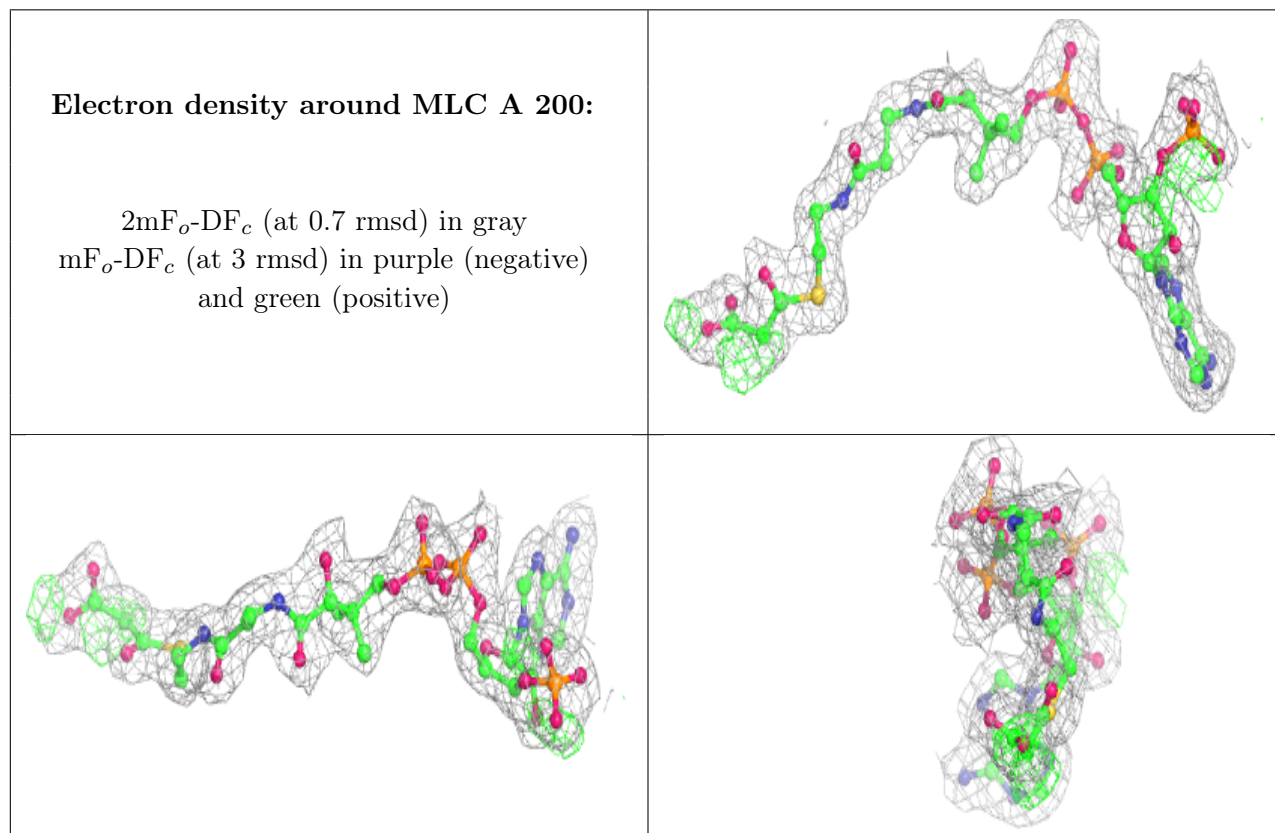
6.3 Carbohydrates [i](#)

Unable to reproduce the depositors R factor - this section is therefore empty.

6.4 Ligands [i](#)

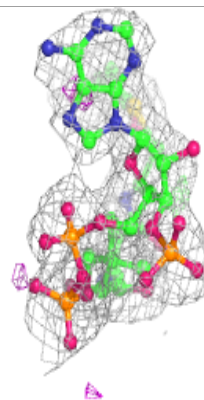
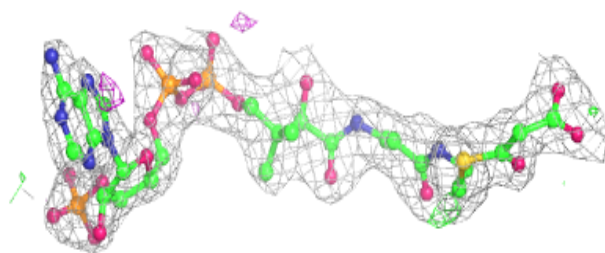
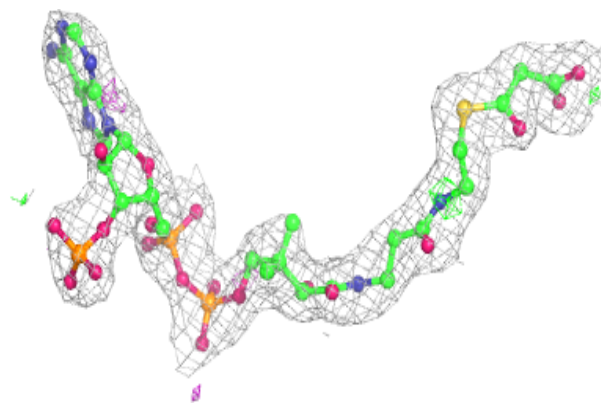
Unable to reproduce the depositors R factor - this section is therefore empty.

The following is a graphical depiction of the model fit to experimental electron density of all instances of the Ligand of Interest. In addition, ligands with molecular weight > 250 and outliers as shown on the geometry validation Tables will also be included. Each fit is shown from different orientation to approximate a three-dimensional view.

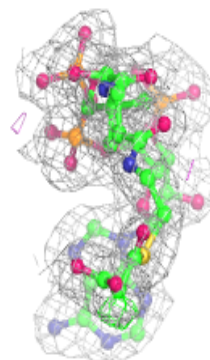
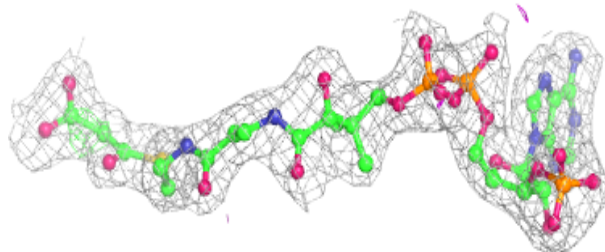
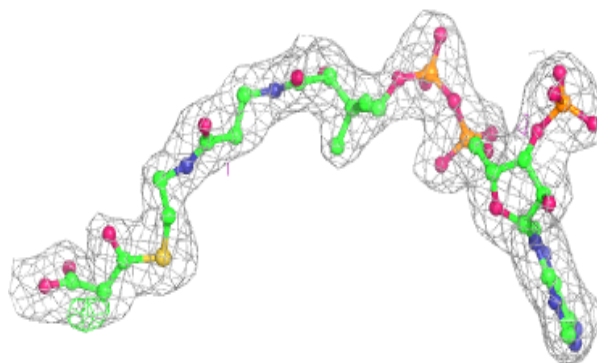


Electron density around MLC B 200:

$2mF_o-DF_c$ (at 0.7 rmsd) in gray
 mF_o-DF_c (at 3 rmsd) in purple (negative)
and green (positive)

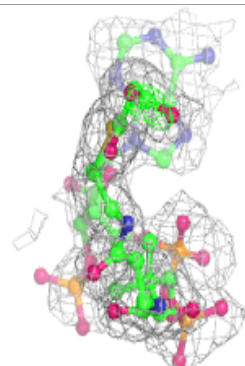
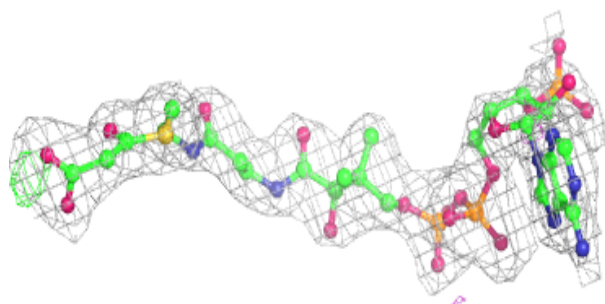
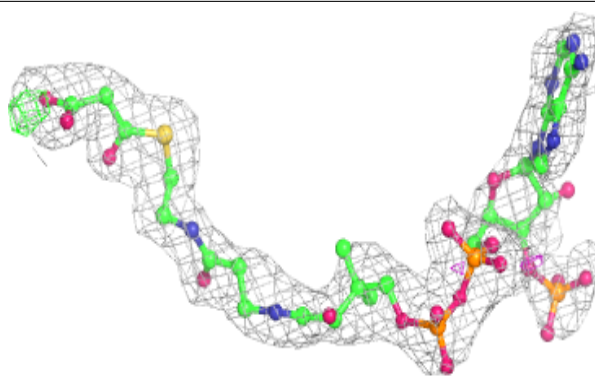
**Electron density around MLC C 200:**

$2mF_o-DF_c$ (at 0.7 rmsd) in gray
 mF_o-DF_c (at 3 rmsd) in purple (negative)
and green (positive)

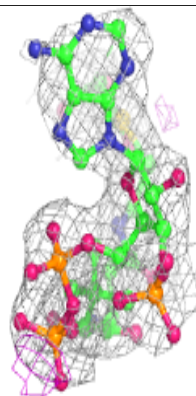
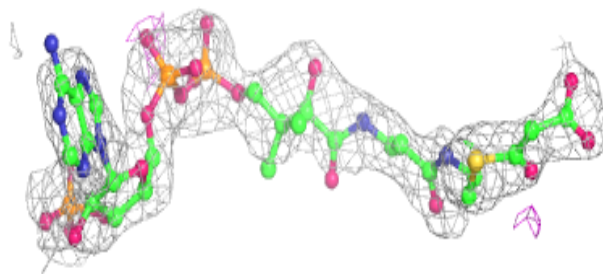
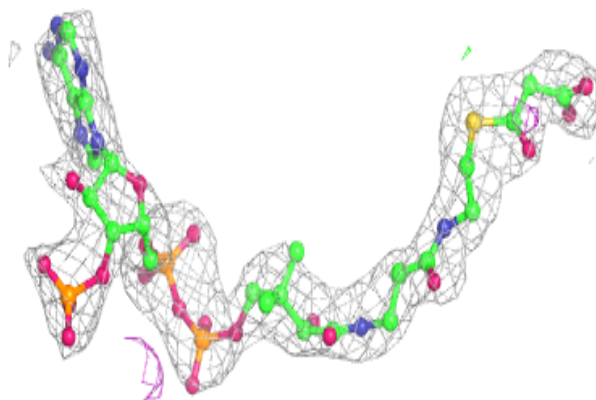


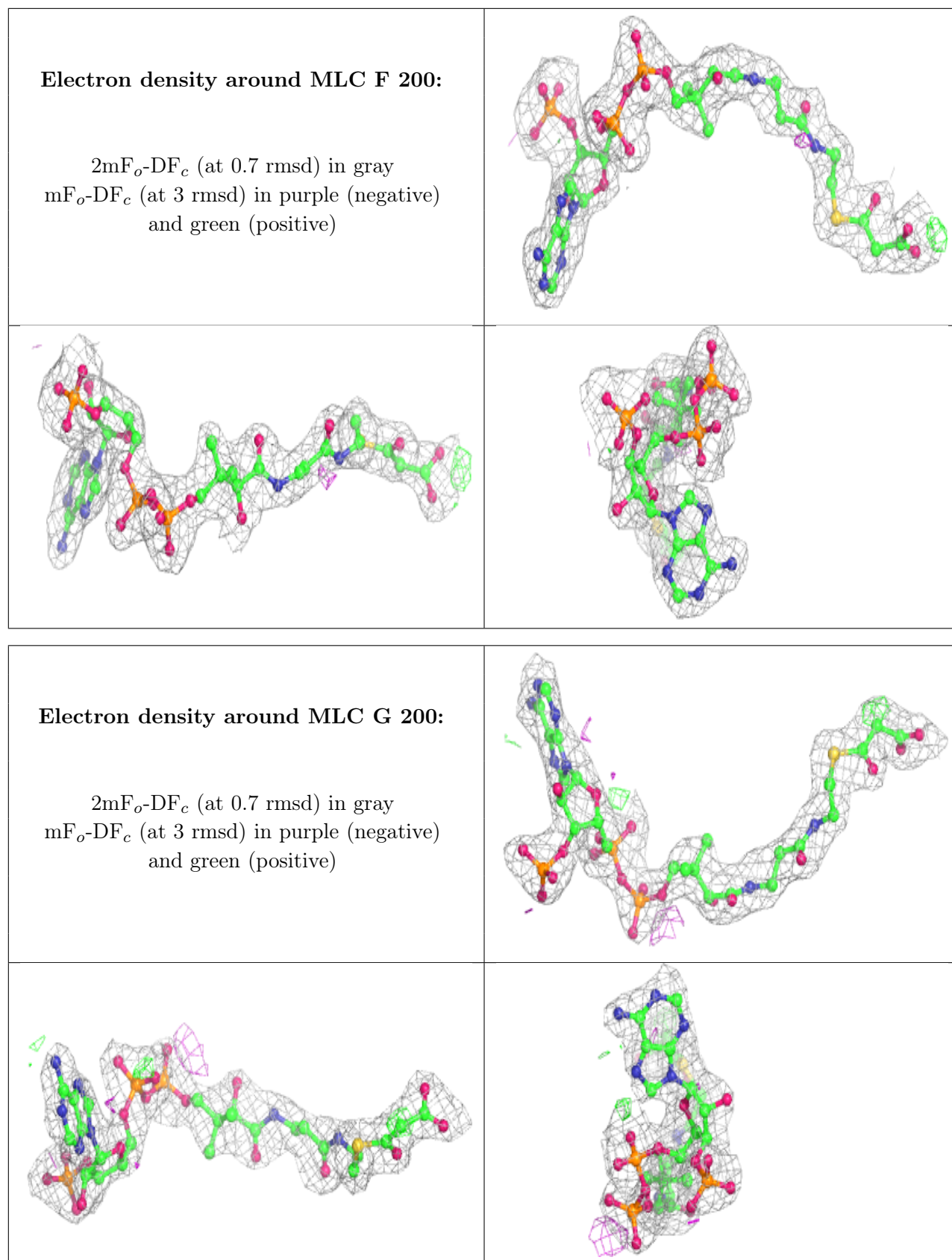
Electron density around MLC D 200:

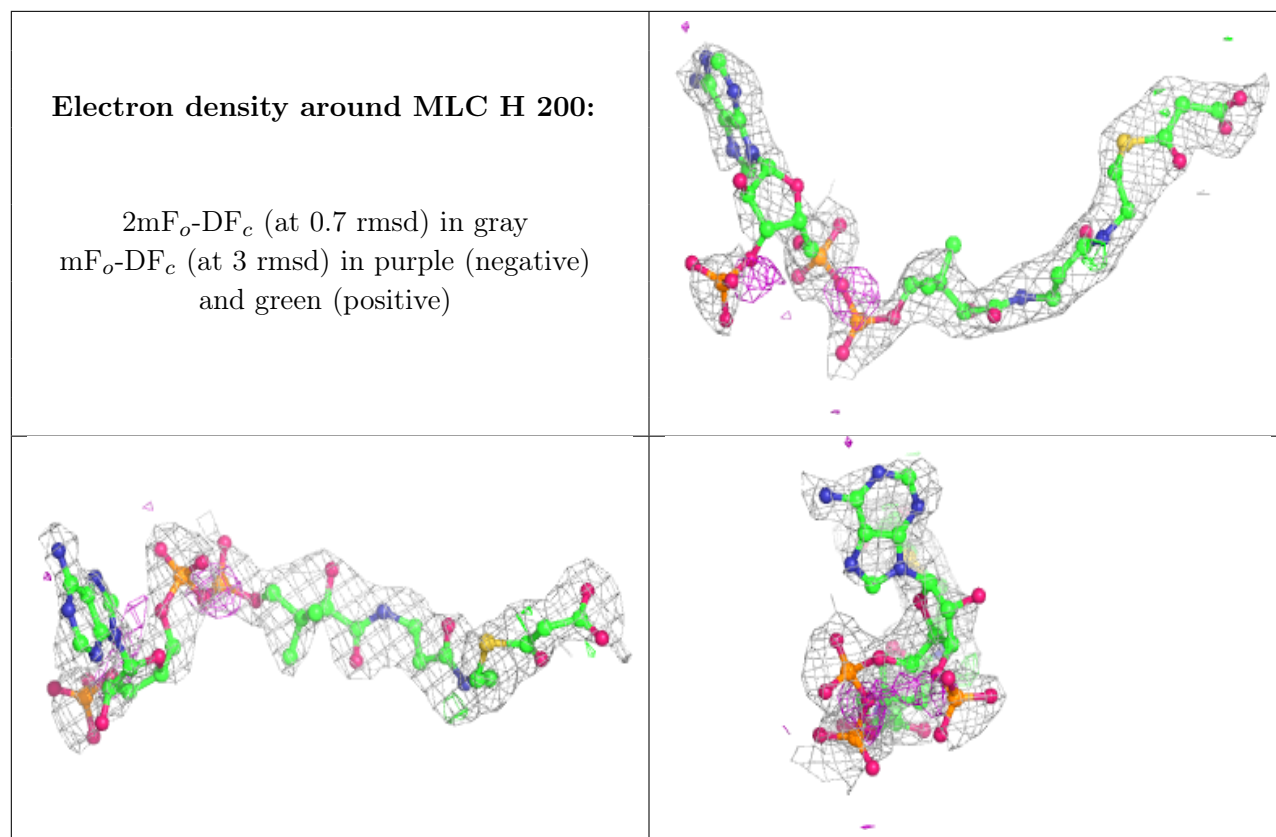
$2mF_o-DF_c$ (at 0.7 rmsd) in gray
 mF_o-DF_c (at 3 rmsd) in purple (negative)
and green (positive)

**Electron density around MLC E 200:**

$2mF_o-DF_c$ (at 0.7 rmsd) in gray
 mF_o-DF_c (at 3 rmsd) in purple (negative)
and green (positive)







6.5 Other polymers [i](#)

Unable to reproduce the depositors R factor - this section is therefore empty.