



# wwPDB X-ray Structure Validation Summary Report

Nov 9, 2022 – 03:44 pm GMT

PDB ID : 7Q7N  
Title : Room temperature structure of the Rhodobacter Sphaeroides Photosynthetic Reaction Center F(M197)H mutant at 120 MPa helium gas pressure in a sapphire capillary  
Authors : Lieske, J.; Guenther, S.; Saouane, S.; Selikhanov, G.K.; Gabdulkhakov, A.G.; Meents, A.  
Deposited on : 2021-11-09  
Resolution : 2.87 Å(reported)

This is a wwPDB X-ray Structure Validation Summary Report for a publicly released PDB entry.

We welcome your comments at [validation@mail.wwpdb.org](mailto:validation@mail.wwpdb.org)

A user guide is available at

<https://www.wwpdb.org/validation/2017/XrayValidationReportHelp>

with specific help available everywhere you see the  symbol.

The types of validation reports are described at

<http://www.wwpdb.org/validation/2017/FAQs#types>.

---

The following versions of software and data (see [references](#) ①) were used in the production of this report:

MolProbity : 4.02b-467  
Mogul : 1.8.4, CSD as541be (2020)  
Xtrriage (Phenix) : 1.13  
EDS : 2.31.2  
buster-report : 1.1.7 (2018)  
Percentile statistics : 20191225.v01 (using entries in the PDB archive December 25th 2019)  
Refmac : 5.8.0267  
CCP4 : 7.1.010 (Gargrove)  
Ideal geometry (proteins) : Engh & Huber (2001)  
Ideal geometry (DNA, RNA) : Parkinson et al. (1996)  
Validation Pipeline (wwPDB-VP) : 2.31.2

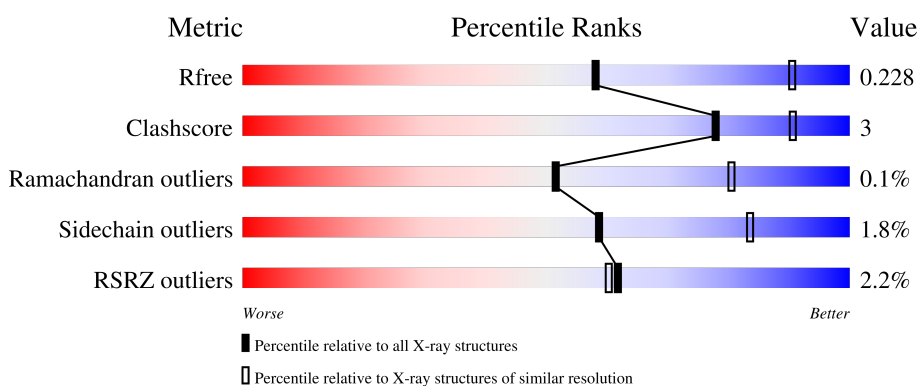
# 1 Overall quality at a glance

The following experimental techniques were used to determine the structure:

*X-RAY DIFFRACTION*

The reported resolution of this entry is 2.87 Å.

Percentile scores (ranging between 0-100) for global validation metrics of the entry are shown in the following graphic. The table shows the number of entries on which the scores are based.



Metric	Whole archive (#Entries)	Similar resolution (#Entries, resolution range(Å))
$R_{free}$	130704	2691 (2.90-2.86)
Clashscore	141614	2947 (2.90-2.86)
Ramachandran outliers	138981	2868 (2.90-2.86)
Sidechain outliers	138945	2871 (2.90-2.86)
RSRZ outliers	127900	2629 (2.90-2.86)

The table below summarises the geometric issues observed across the polymeric chains and their fit to the electron density. The red, orange, yellow and green segments of the lower bar indicate the fraction of residues that contain outliers for  $\geq 3$ , 2, 1 and 0 types of geometric quality criteria respectively. A grey segment represents the fraction of residues that are not modelled. The numeric value for each fraction is indicated below the corresponding segment, with a dot representing fractions  $\leq 5\%$ . The upper red bar (where present) indicates the fraction of residues that have poor fit to the electron density. The numeric value is given above the bar.

Mol	Chain	Length	Quality of chain
1	H	241	 2% 92% 8%
2	L	281	 4% 95% 5%
3	M	302	 % 96% . .

The following table lists non-polymeric compounds, carbohydrate monomers and non-standard residues in protein, DNA, RNA chains that are outliers for geometric or electron-density-fit criteria:

Mol	Type	Chain	Res	Chirality	Geometry	Clashes	Electron density
4	LDA	H	303	-	-	-	X
4	LDA	L	306	-	-	-	X
4	LDA	L	308	-	-	-	X
4	LDA	M	410	-	-	-	X

## 2 Entry composition [i](#)

There are 14 unique types of molecules in this entry. The entry contains 14735 atoms, of which 7348 are hydrogens and 0 are deuteriums.

In the tables below, the ZeroOcc column contains the number of atoms modelled with zero occupancy, the AltConf column contains the number of residues with at least one atom in alternate conformation and the Trace column contains the number of residues modelled with at most 2 atoms.

- Molecule 1 is a protein called Reaction center protein H chain.

Mol	Chain	Residues	Atoms						ZeroOcc	AltConf	Trace
			Total	C	H	N	O	S			
1	H	240	3751	1196	1883	321	341	10	0	5	0

- Molecule 2 is a protein called Reaction center protein L chain.

Mol	Chain	Residues	Atoms						ZeroOcc	AltConf	Trace
			Total	C	H	N	O	S			
2	L	280	4439	1517	2197	356	361	8	0	2	0

There is a discrepancy between the modelled and reference sequences:

Chain	Residue	Modelled	Actual	Comment	Reference
L	178	THR	SER	engineered mutation	UNP P0C0Y8

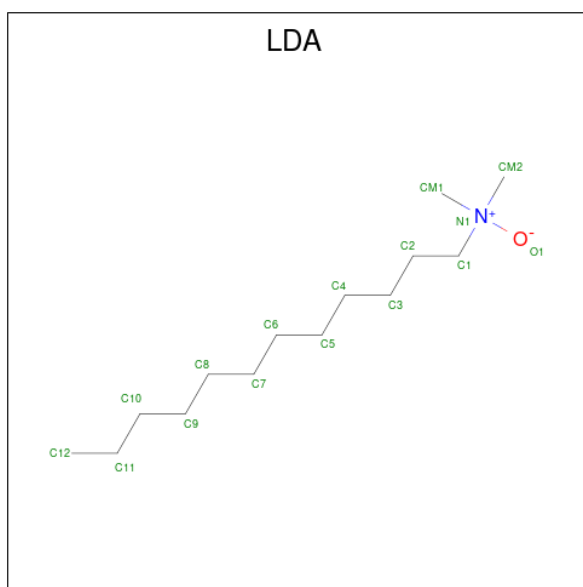
- Molecule 3 is a protein called Reaction center protein M chain.

Mol	Chain	Residues	Atoms						ZeroOcc	AltConf	Trace
			Total	C	H	N	O	S			
3	M	300	4775	1629	2340	398	398	10	0	5	0

There are 2 discrepancies between the modelled and reference sequences:

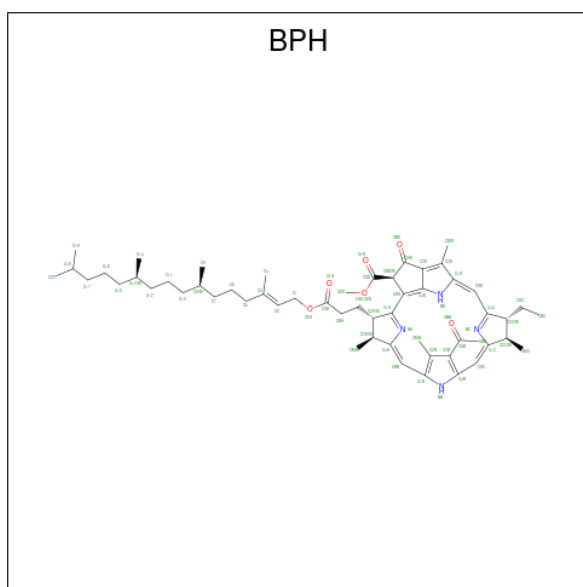
Chain	Residue	Modelled	Actual	Comment	Reference
M	8	THR	SER	engineered mutation	UNP P0C0Y9
M	197	HIS	PHE	engineered mutation	UNP P0C0Y9

- Molecule 4 is LAURYL DIMETHYLAMINE-N-OXIDE (three-letter code: LDA) (formula: C<sub>14</sub>H<sub>31</sub>NO) (labeled as "Ligand of Interest" by depositor).



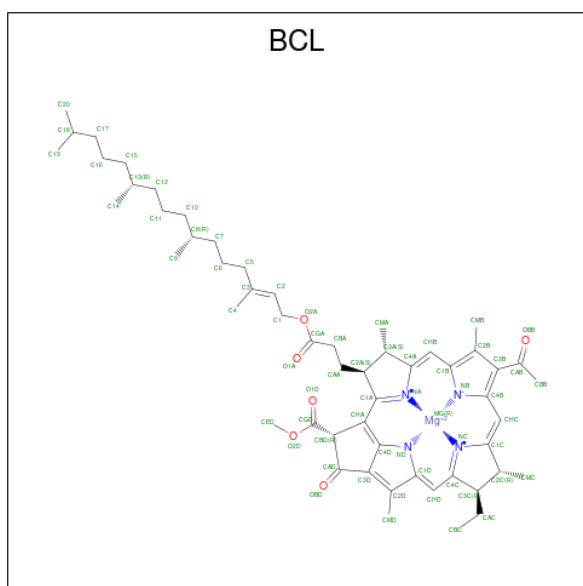
Mol	Chain	Residues	Atoms					ZeroOcc	AltConf
			Total	C	H	N	O		
4	H	1	Total 47	C 14	H 31	N 1	O 1	0	0
4	H	1	Total 47	C 14	H 31	N 1	O 1	0	0
4	H	1	Total 47	C 14	H 31	N 1	O 1	0	0
4	L	1	Total 47	C 14	H 31	N 1	O 1	0	0
4	L	1	Total 47	C 14	H 31	N 1	O 1	0	0
4	L	1	Total 47	C 14	H 31	N 1	O 1	0	0
4	M	1	Total 47	C 14	H 31	N 1	O 1	0	0
4	M	1	Total 47	C 14	H 31	N 1	O 1	0	0
4	M	1	Total 47	C 14	H 31	N 1	O 1	0	0

- Molecule 5 is BACTERIOPHEOPHYTIN A (three-letter code: BPH) (formula: C<sub>55</sub>H<sub>76</sub>N<sub>4</sub>O<sub>6</sub>).



Mol	Chain	Residues	Atoms					ZeroOcc	AltConf
			Total	C	H	N	O		
5	L	1	141	55	76	4	6	0	0
5	M	1	95	40	45	4	6	0	0

- Molecule 6 is BACTERIOCHLOROPHYLL A (three-letter code: BCL) (formula:  $C_{55}H_{74}MgN_4O_6$ ) (labeled as "Ligand of Interest" by depositor).



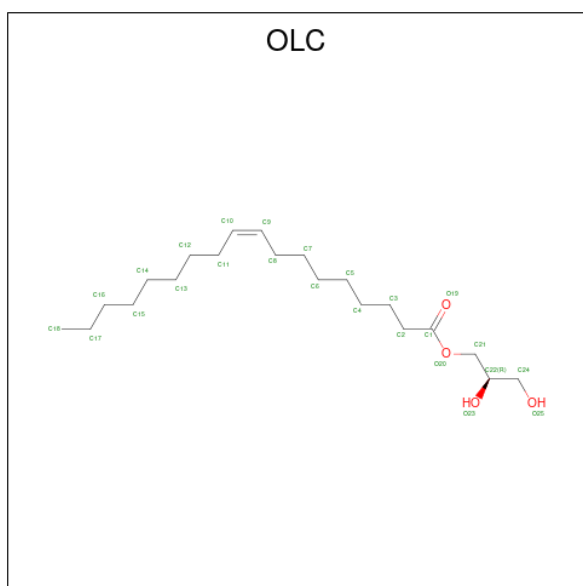
Mol	Chain	Residues	Atoms					ZeroOcc	AltConf	
			Total	C	H	Mg	N			O
6	L	1	140	55	74	1	4	6	0	0

*Continued on next page...*

Continued from previous page...

Mol	Chain	Residues	Atoms					ZeroOcc	AltConf	
			Total	C	H	Mg	N			O
6	L	1	Total	C	H	Mg	N	O	0	0
			140	55	74	1	4	6		
6	M	1	Total	C	H	Mg	N	O	0	0
			140	55	74	1	4	6		
6	M	1	Total	C	H	Mg	N	O	0	0
			94	40	43	1	4	6		

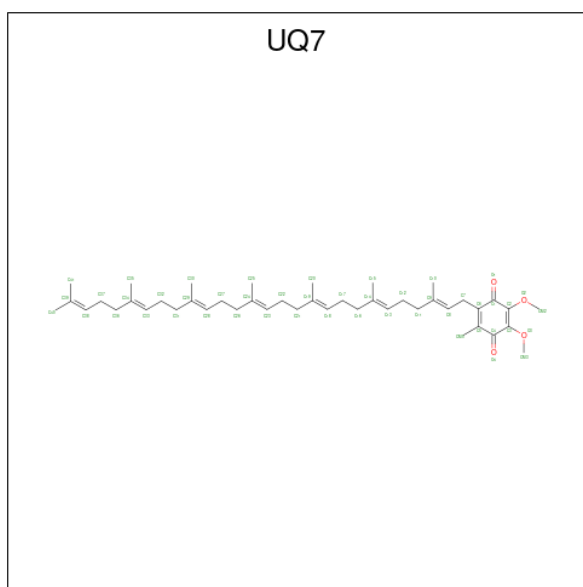
- Molecule 7 is (2R)-2,3-dihydroxypropyl (9Z)-octadec-9-enoate (three-letter code: OLC) (formula: C<sub>21</sub>H<sub>40</sub>O<sub>4</sub>) (labeled as "Ligand of Interest" by depositor).



Mol	Chain	Residues	Atoms			ZeroOcc	AltConf	
			Total	C	H			O
7	L	1	Total	C	H	O	0	1
			130	42	80	8		
7	M	1	Total	C	H	O	0	1
			65	21	40	4		

- Molecule 8 is UBIQUINONE-7 (three-letter code: UQ7) (formula: C<sub>44</sub>H<sub>66</sub>O<sub>4</sub>) (labeled as "Ligand of Interest" by depositor).



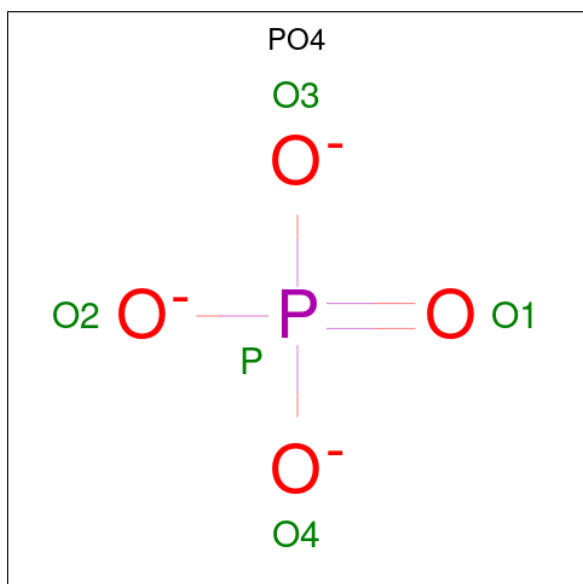


Mol	Chain	Residues	Atoms				ZeroOcc	AltConf
			Total	C	H	O		
8	M	1	113	44	65	4	0	0

- Molecule 9 is FE (III) ION (three-letter code: FE) (formula: Fe) (labeled as "Ligand of Interest" by depositor).

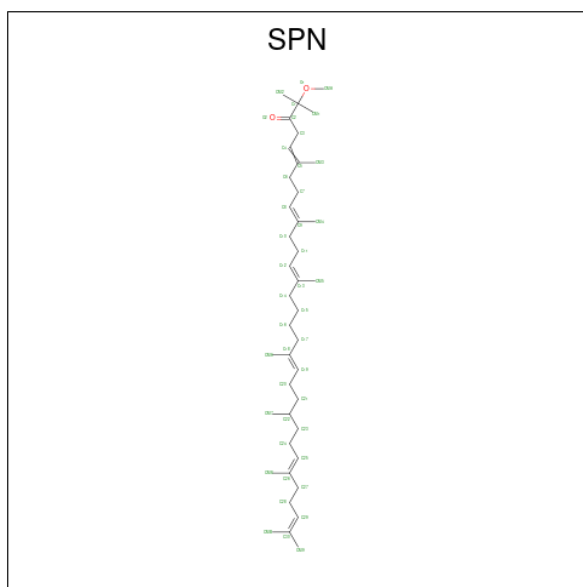
Mol	Chain	Residues	Atoms		ZeroOcc	AltConf
			Total	Fe		
9	M	1	1	1	0	0

- Molecule 10 is PHOSPHATE ION (three-letter code: PO4) (formula: O<sub>4</sub>P) (labeled as "Ligand of Interest" by depositor).



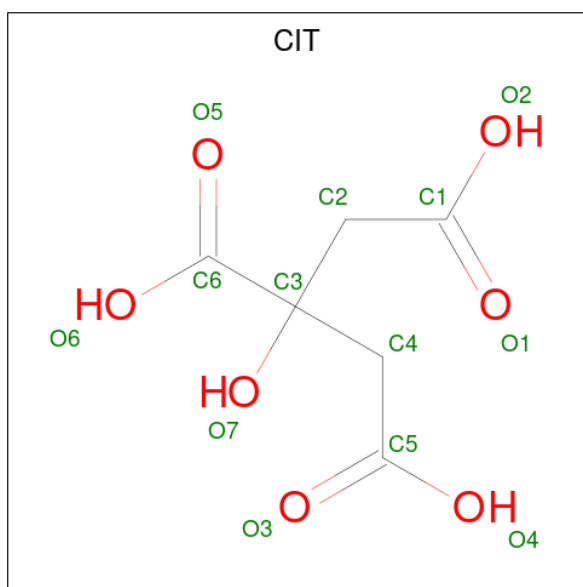
Mol	Chain	Residues	Atoms			ZeroOcc	AltConf
10	M	1	Total	O	P	0	0
			5	4	1		
10	M	1	Total	O	P	0	0
			5	4	1		

- Molecule 11 is SPEROIDENONE (three-letter code: SPN) (formula:  $C_{41}H_{70}O_2$ ) (labeled as "Ligand of Interest" by depositor).



Mol	Chain	Residues	Atoms				ZeroOcc	AltConf
11	M	1	Total	C	H	O	0	1
			113	41	70	2		

- Molecule 12 is CITRIC ACID (three-letter code: CIT) (formula:  $C_6H_8O_7$ ).



Mol	Chain	Residues	Atoms				ZeroOcc	AltConf
12	M	1	Total	C	H	O	0	0
			21	6	8	7		

- Molecule 13 is CHLORIDE ION (three-letter code: CL) (formula: Cl).

Mol	Chain	Residues	Atoms		ZeroOcc	AltConf
13	M	1	Total	Cl	0	0
			1	1		

- Molecule 14 is water.

Mol	Chain	Residues	Atoms		ZeroOcc	AltConf
14	H	60	Total	O	0	1
			61	61		
14	L	36	Total	O	0	0
			36	36		
14	M	46	Total	O	0	0
			46	46		

### 3 Residue-property plots [i](#)

These plots are drawn for all protein, RNA, DNA and oligosaccharide chains in the entry. The first graphic for a chain summarises the proportions of the various outlier classes displayed in the second graphic. The second graphic shows the sequence view annotated by issues in geometry and electron density. Residues are color-coded according to the number of geometric quality criteria for which they contain at least one outlier: green = 0, yellow = 1, orange = 2 and red = 3 or more. A red dot above a residue indicates a poor fit to the electron density ( $RSRZ > 2$ ). Stretches of 2 or more consecutive residues without any outlier are shown as a green connector. Residues present in the sample, but not in the model, are shown in grey.

- Molecule 1: Reaction center protein H chain



- Molecule 2: Reaction center protein L chain



- Molecule 3: Reaction center protein M chain



## 4 Data and refinement statistics

Property	Value	Source
Space group	P 42 21 2	Depositor
Cell constants a, b, c, $\alpha$ , $\beta$ , $\gamma$	102.13Å 102.13Å 237.61Å 90.00° 90.00° 90.00°	Depositor
Resolution (Å)	46.91 – 2.87 46.91 – 2.87	Depositor EDS
% Data completeness (in resolution range)	97.0 (46.91-2.87) 85.8 (46.91-2.87)	Depositor EDS
$R_{merge}$	0.48	Depositor
$R_{sym}$	(Not available)	Depositor
$\langle I/\sigma(I) \rangle$ <sup>1</sup>	0.92 (at 2.86Å)	Xtrriage
Refinement program	PHENIX 1.13-2998_9999	Depositor
R, $R_{free}$	0.189 , 0.228 0.189 , 0.228	Depositor DCC
$R_{free}$ test set	1157 reflections (4.02%)	wwPDB-VP
Wilson B-factor (Å <sup>2</sup> )	34.6	Xtrriage
Anisotropy	0.001	Xtrriage
Bulk solvent $k_{sol}$ (e/Å <sup>3</sup> ), $B_{sol}$ (Å <sup>2</sup> )	(Not available) , (Not available)	EDS
L-test for twinning <sup>2</sup>	$\langle  L  \rangle = 0.48$ , $\langle L^2 \rangle = 0.31$	Xtrriage
Estimated twinning fraction	No twinning to report.	Xtrriage
$F_o, F_c$ correlation	0.92	EDS
Total number of atoms	14735	wwPDB-VP
Average B, all atoms (Å <sup>2</sup> )	47.0	wwPDB-VP

Xtrriage's analysis on translational NCS is as follows: *The largest off-origin peak in the Patterson function is 3.08% of the height of the origin peak. No significant pseudotranslation is detected.*

<sup>1</sup>Intensities estimated from amplitudes.

<sup>2</sup>Theoretical values of  $\langle |L| \rangle$ ,  $\langle L^2 \rangle$  for acentric reflections are 0.5, 0.333 respectively for untwinned datasets, and 0.375, 0.2 for perfectly twinned datasets.

## 5 Model quality [i](#)

### 5.1 Standard geometry [i](#)

Bond lengths and bond angles in the following residue types are not validated in this section: OLC, BCL, CIT, SPN, BPH, UQ7, PO4, FE, LDA, CL

The Z score for a bond length (or angle) is the number of standard deviations the observed value is removed from the expected value. A bond length (or angle) with  $|Z| > 5$  is considered an outlier worth inspection. RMSZ is the root-mean-square of all Z scores of the bond lengths (or angles).

Mol	Chain	Bond lengths		Bond angles	
		RMSZ	# Z  >5	RMSZ	# Z  >5
1	H	0.26	0/1928	0.43	0/2619
2	L	0.25	0/2338	0.39	0/3203
3	M	0.25	0/2542	0.38	0/3472
All	All	0.25	0/6808	0.40	0/9294

There are no bond length outliers.

There are no bond angle outliers.

There are no chirality outliers.

There are no planarity outliers.

### 5.2 Too-close contacts [i](#)

In the following table, the Non-H and H(model) columns list the number of non-hydrogen atoms and hydrogen atoms in the chain respectively. The H(added) column lists the number of hydrogen atoms added and optimized by MolProbity. The Clashes column lists the number of clashes within the asymmetric unit, whereas Symm-Clashes lists symmetry-related clashes.

Mol	Chain	Non-H	H(model)	H(added)	Clashes	Symm-Clashes
1	H	1868	1883	1875	9	0
2	L	2242	2197	2191	6	0
3	M	2435	2340	2326	7	0
4	H	48	93	93	1	0
4	L	48	93	93	3	0
4	M	48	93	93	2	0
5	L	65	76	76	0	0
5	M	50	45	43	3	0
6	L	132	148	148	6	0
6	M	117	117	115	8	0

*Continued on next page...*

Continued from previous page...

Mol	Chain	Non-H	H(model)	H(added)	Clashes	Symm-Clashes
7	L	50	80	80	1	0
7	M	25	40	40	0	0
8	M	48	65	66	4	0
9	M	1	0	0	0	0
10	M	10	0	0	0	0
11	M	43	70	70	1	0
12	M	13	8	5	2	0
13	M	1	0	0	0	0
14	H	61	0	0	0	0
14	L	36	0	0	0	0
14	M	46	0	0	0	0
All	All	7387	7348	7314	42	0

The all-atom clashscore is defined as the number of clashes found per 1000 atoms (including hydrogen atoms). The all-atom clashscore for this structure is 3.

The worst 5 of 42 close contacts within the same asymmetric unit are listed below, sorted by their clash magnitude.

Atom-1	Atom-2	Interatomic distance (Å)	Clash overlap (Å)
1:H:181:VAL:HG21	1:H:191:LEU:HD12	1.77	0.65
6:L:302:BCL:HMB1	6:L:302:BCL:HBB2	1.78	0.65
1:H:122:GLU:HB2	1:H:227:LEU:HD21	1.81	0.61
2:L:173:HIS:CE1	2:L:177:ILE:HD11	2.36	0.61
1:H:31:LEU:O	1:H:35:ASN:ND2	2.38	0.57

There are no symmetry-related clashes.

## 5.3 Torsion angles [i](#)

### 5.3.1 Protein backbone [i](#)

In the following table, the Percentiles column shows the percent Ramachandran outliers of the chain as a percentile score with respect to all X-ray entries followed by that with respect to entries of similar resolution.

The Analysed column shows the number of residues for which the backbone conformation was analysed, and the total number of residues.

Mol	Chain	Analysed	Favoured	Allowed	Outliers	Percentiles
1	H	243/241 (101%)	239 (98%)	4 (2%)	0	<b>100</b> <b>100</b>

Continued on next page...

Continued from previous page...

Mol	Chain	Analysed	Favoured	Allowed	Outliers	Percentiles	
2	L	280/281 (100%)	271 (97%)	8 (3%)	1 (0%)	34	64
3	M	303/302 (100%)	294 (97%)	9 (3%)	0	100	100
All	All	826/824 (100%)	804 (97%)	21 (2%)	1 (0%)	51	80

All (1) Ramachandran outliers are listed below:

Mol	Chain	Res	Type
2	L	31	VAL

### 5.3.2 Protein sidechains [i](#)

In the following table, the Percentiles column shows the percent sidechain outliers of the chain as a percentile score with respect to all X-ray entries followed by that with respect to entries of similar resolution.

The Analysed column shows the number of residues for which the sidechain conformation was analysed, and the total number of residues.

Mol	Chain	Analysed	Rotameric	Outliers	Percentiles	
1	H	200/196 (102%)	195 (98%)	5 (2%)	47	77
2	L	222/220 (101%)	216 (97%)	6 (3%)	44	75
3	M	240/236 (102%)	238 (99%)	2 (1%)	81	93
All	All	662/652 (102%)	649 (98%)	13 (2%)	59	81

5 of 13 residues with a non-rotameric sidechain are listed below:

Mol	Chain	Res	Type
2	L	247	CYS
2	L	271	TRP
3	M	216	PHE
2	L	274	ASN
3	M	182	HIS

Sometimes sidechains can be flipped to improve hydrogen bonding and reduce clashes. There are no such sidechains identified.

### 5.3.3 RNA [i](#)

There are no RNA molecules in this entry.



## 5.4 Non-standard residues in protein, DNA, RNA chains [i](#)

There are no non-standard protein/DNA/RNA residues in this entry.

## 5.5 Carbohydrates [i](#)

There are no monosaccharides in this entry.

## 5.6 Ligand geometry [i](#)

Of 25 ligands modelled in this entry, 2 are monoatomic - leaving 23 for Mogul analysis.

In the following table, the Counts columns list the number of bonds (or angles) for which Mogul statistics could be retrieved, the number of bonds (or angles) that are observed in the model and the number of bonds (or angles) that are defined in the Chemical Component Dictionary. The Link column lists molecule types, if any, to which the group is linked. The Z score for a bond length (or angle) is the number of standard deviations the observed value is removed from the expected value. A bond length (or angle) with  $|Z| > 2$  is considered an outlier worth inspection. RMSZ is the root-mean-square of all Z scores of the bond lengths (or angles).

Mol	Type	Chain	Res	Link	Bond lengths			Bond angles		
					Counts	RMSZ	# Z  > 2	Counts	RMSZ	# Z  > 2
4	LDA	L	307	-	12,15,15	0.35	0	14,17,17	0.69	0
6	BCL	M	403	-	43,59,74	1.41	4 (9%)	51,97,115	1.44	10 (19%)
10	PO4	M	407	-	4,4,4	0.91	0	6,6,6	0.48	0
10	PO4	M	411	-	4,4,4	0.90	0	6,6,6	0.43	0
4	LDA	L	308	-	12,15,15	0.35	0	14,17,17	0.40	0
7	OLC	L	305[A]	-	24,24,24	0.19	0	25,25,25	0.16	0
7	OLC	L	305[B]	-	24,24,24	0.20	0	25,25,25	0.24	0
4	LDA	H	303	-	12,15,15	0.34	0	14,17,17	0.62	0
4	LDA	M	405	-	12,15,15	0.36	0	14,17,17	0.46	0
5	BPH	M	304	-	36,55,70	0.74	2 (5%)	34,83,101	1.13	5 (14%)
6	BCL	L	303	-	58,74,74	1.24	5 (8%)	69,115,115	1.20	8 (11%)
4	LDA	H	302	-	12,15,15	0.35	0	14,17,17	0.18	0
4	LDA	L	306	-	12,15,15	0.32	0	14,17,17	0.31	0
4	LDA	M	406	-	12,15,15	0.45	0	14,17,17	0.27	0
11	SPN	M	409[A]	-	40,42,42	0.16	0	50,52,52	0.56	2 (4%)
6	BCL	L	302	-	58,74,74	1.22	5 (8%)	69,115,115	1.16	8 (11%)
4	LDA	M	410	-	12,15,15	0.35	0	14,17,17	0.14	0
4	LDA	H	301	-	12,15,15	0.33	0	14,17,17	0.25	0
12	CIT	M	412	-	12,12,12	0.19	0	17,17,17	0.62	0
7	OLC	M	408[B]	-	24,24,24	0.19	0	25,25,25	0.22	0
5	BPH	L	301	-	51,70,70	0.51	1 (1%)	52,101,101	0.86	3 (5%)

Mol	Type	Chain	Res	Link	Bond lengths			Bond angles		
					Counts	RMSZ	# Z  > 2	Counts	RMSZ	# Z  > 2
8	UQ7	M	401	-	48,48,48	0.23	0	58,61,61	0.40	0
6	BCL	M	402	-	58,74,74	1.23	5 (8%)	69,115,115	1.32	9 (13%)

In the following table, the Chirals column lists the number of chiral outliers, the number of chiral centers analysed, the number of these observed in the model and the number defined in the Chemical Component Dictionary. Similar counts are reported in the Torsion and Rings columns. '-' means no outliers of that kind were identified.

Mol	Type	Chain	Res	Link	Chirals	Torsions	Rings
4	LDA	L	307	-	-	5/13/13/13	-
6	BCL	M	403	-	-	1/19/119/137	-
4	LDA	L	308	-	-	9/13/13/13	-
7	OLC	L	305[A]	-	-	12/24/24/24	-
7	OLC	L	305[B]	-	-	11/24/24/24	-
4	LDA	H	303	-	-	5/13/13/13	-
4	LDA	M	405	-	-	6/13/13/13	-
5	BPH	M	304	-	-	6/19/87/105	0/5/6/6
6	BCL	L	303	-	-	1/37/137/137	-
4	LDA	H	302	-	-	7/13/13/13	-
4	LDA	L	306	-	-	7/13/13/13	-
4	LDA	M	406	-	-	6/13/13/13	-
11	SPN	M	409[A]	-	-	17/50/51/51	-
6	BCL	L	302	-	-	3/37/137/137	-
4	LDA	M	410	-	-	6/13/13/13	-
4	LDA	H	301	-	-	6/13/13/13	-
12	CIT	M	412	-	-	6/16/16/16	-
7	OLC	M	408[B]	-	-	6/24/24/24	-
5	BPH	L	301	-	-	7/37/105/105	0/5/6/6
8	UQ7	M	401	-	-	9/45/69/69	0/1/1/1
6	BCL	M	402	-	-	9/37/137/137	-

The worst 5 of 22 bond length outliers are listed below:

Mol	Chain	Res	Type	Atoms	Z	Observed(Å)	Ideal(Å)
6	M	403	BCL	C1B-NB	5.20	1.39	1.35
6	L	303	BCL	C1B-NB	5.12	1.39	1.35
6	L	302	BCL	C1B-NB	5.09	1.39	1.35
6	M	402	BCL	C1B-NB	4.94	1.39	1.35

*Continued on next page...*

Continued from previous page...

Mol	Chain	Res	Type	Atoms	Z	Observed(Å)	Ideal(Å)
6	M	402	BCL	MG-NA	4.68	2.17	2.06

The worst 5 of 45 bond angle outliers are listed below:

Mol	Chain	Res	Type	Atoms	Z	Observed(°)	Ideal(°)
6	M	402	BCL	C4A-NA-C1A	4.18	108.58	106.71
6	M	403	BCL	CAD-C3D-C4D	-3.86	106.32	108.47
6	M	402	BCL	CAD-C3D-C4D	-3.53	106.50	108.47
6	M	403	BCL	CMB-C2B-C1B	-3.50	123.09	128.46
6	M	402	BCL	CMB-C2B-C1B	-3.48	123.12	128.46

There are no chirality outliers.

5 of 145 torsion outliers are listed below:

Mol	Chain	Res	Type	Atoms
4	H	302	LDA	N1-C1-C2-C3
4	H	303	LDA	C2-C1-N1-O1
4	H	303	LDA	C2-C1-N1-CM1
4	L	306	LDA	N1-C1-C2-C3
4	L	307	LDA	C2-C1-N1-O1

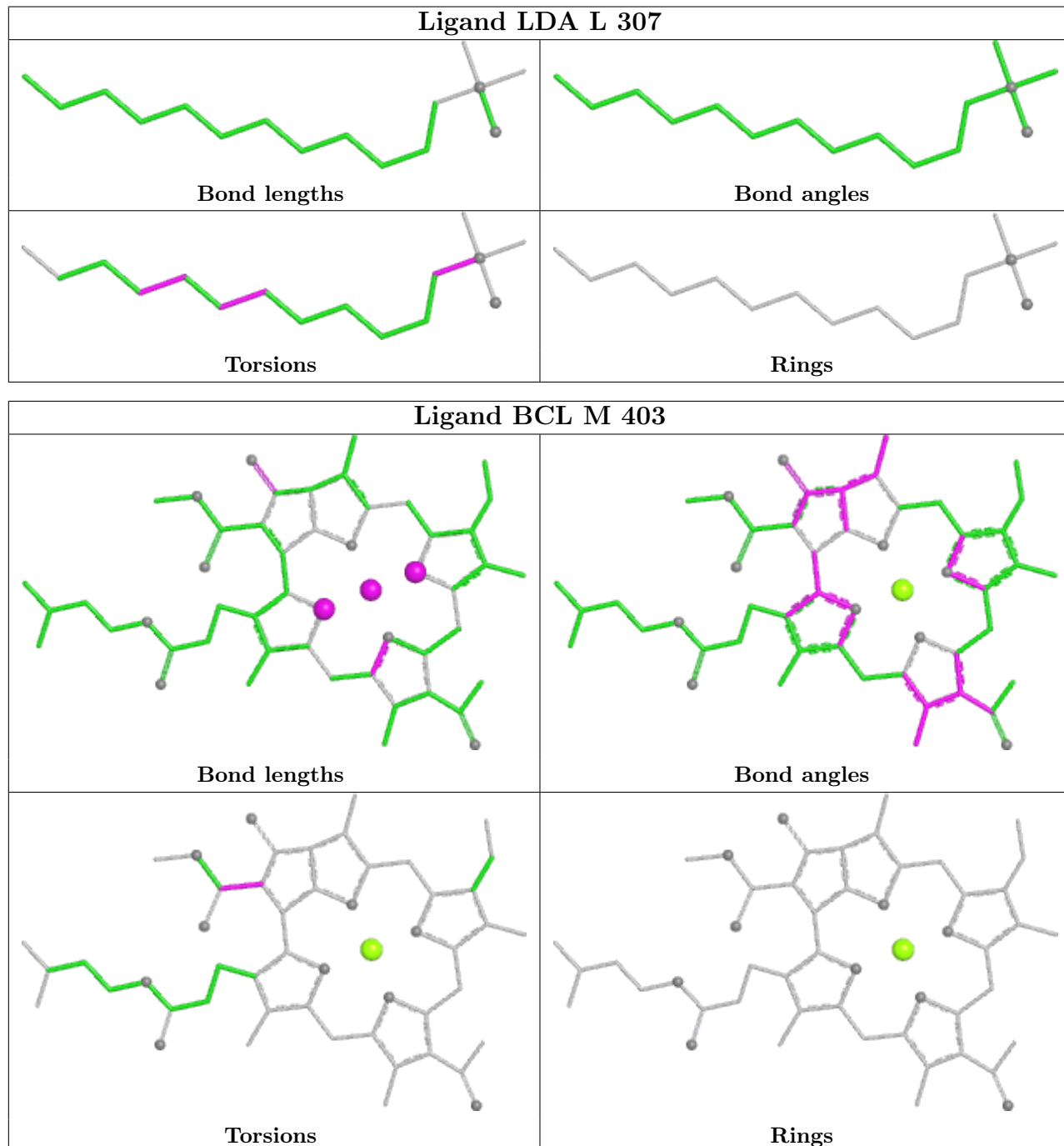
There are no ring outliers.

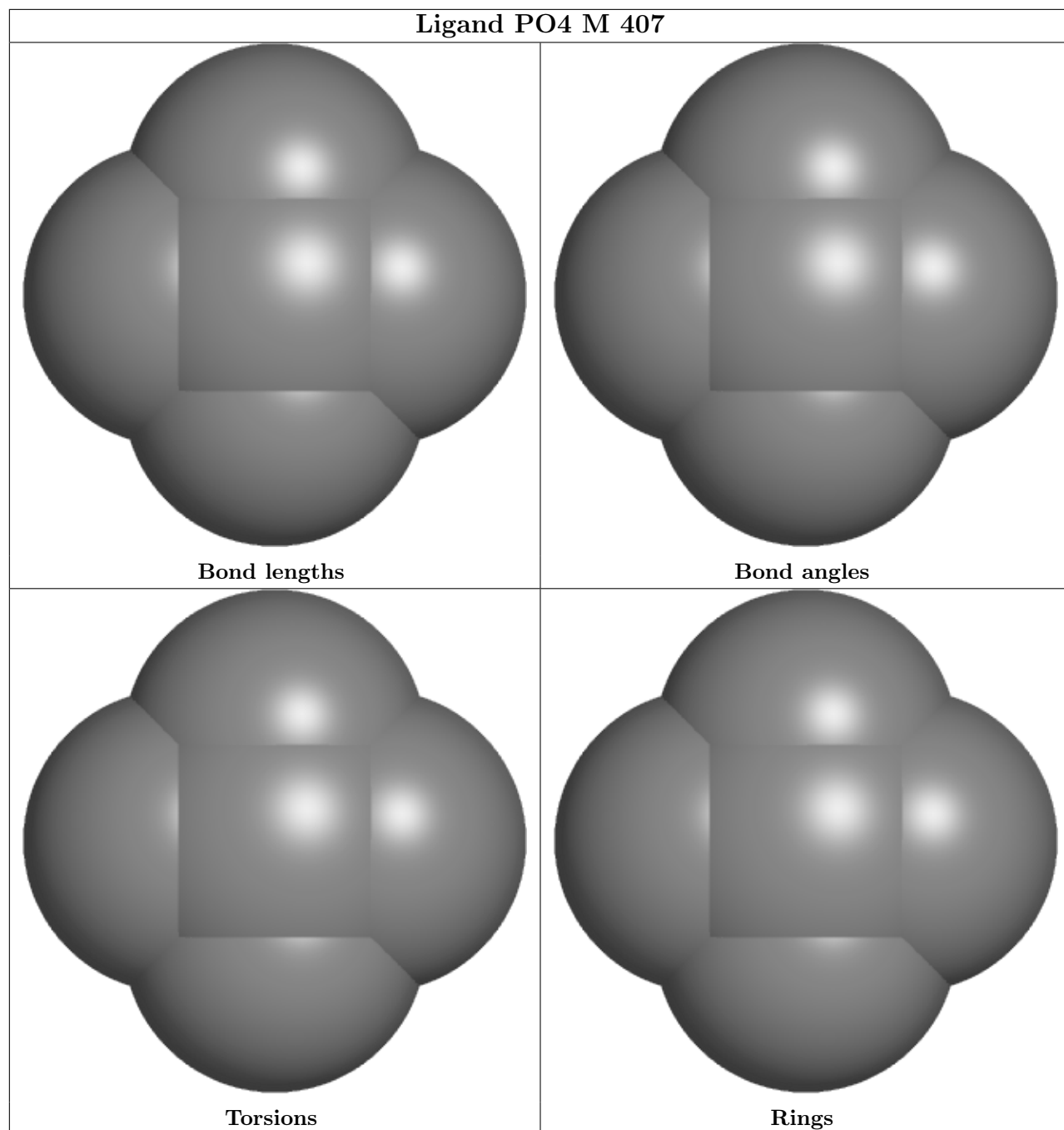
13 monomers are involved in 29 short contacts:

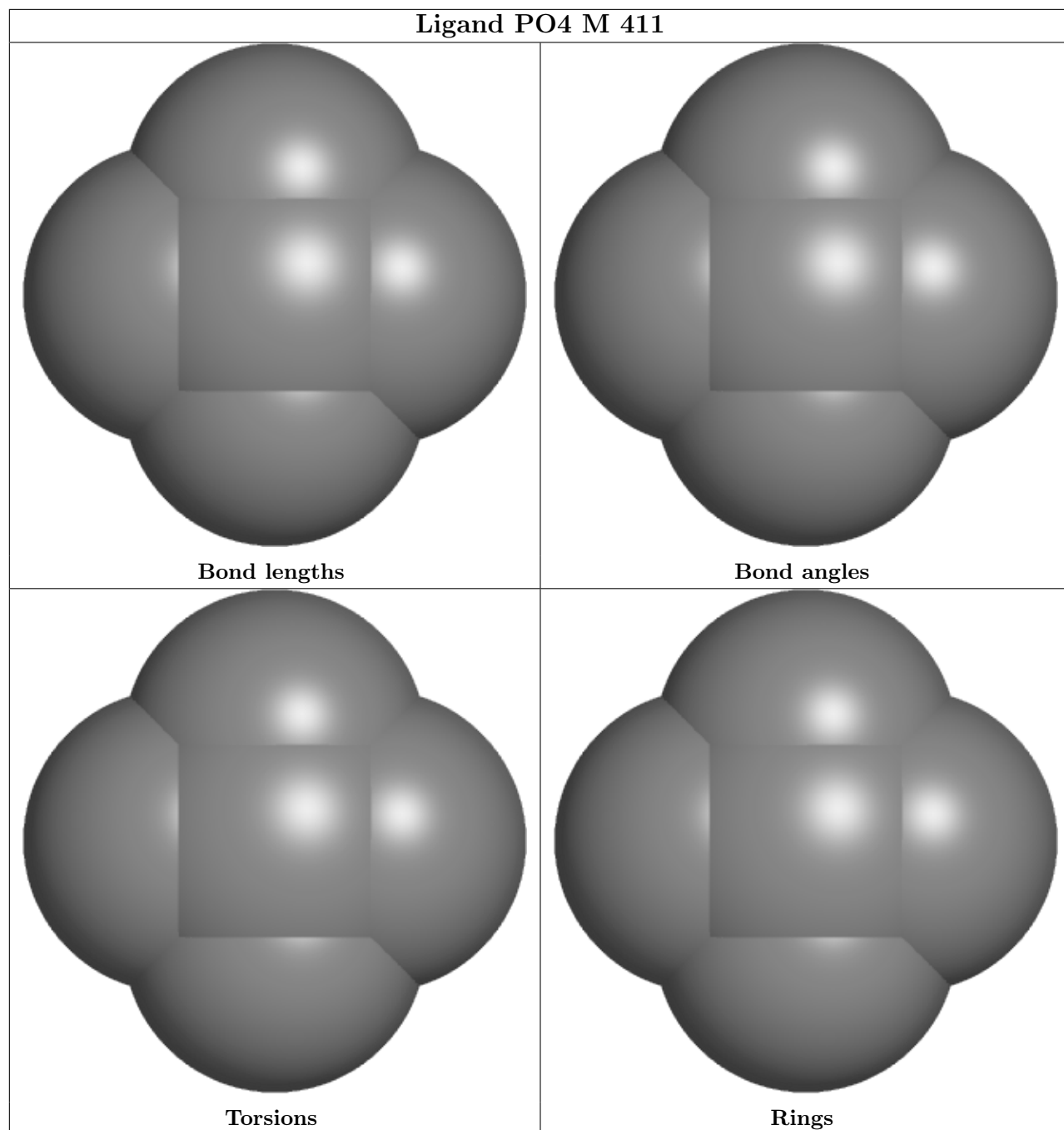
Mol	Chain	Res	Type	Clashes	Symm-Clashes
6	M	403	BCL	4	0
4	L	308	LDA	1	0
7	L	305[B]	OLC	1	0
5	M	304	BPH	3	0
6	L	303	BCL	4	0
4	L	306	LDA	2	0
4	M	406	LDA	2	0
11	M	409[A]	SPN	1	0
6	L	302	BCL	2	0
4	H	301	LDA	1	0
12	M	412	CIT	2	0
8	M	401	UQ7	4	0
6	M	402	BCL	4	0

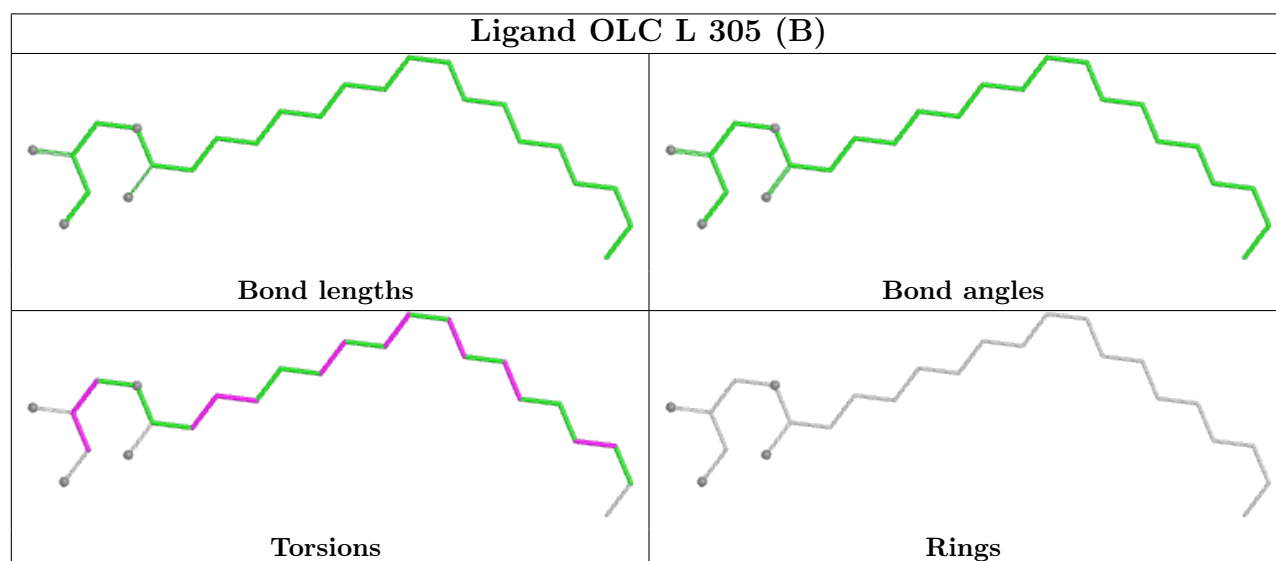
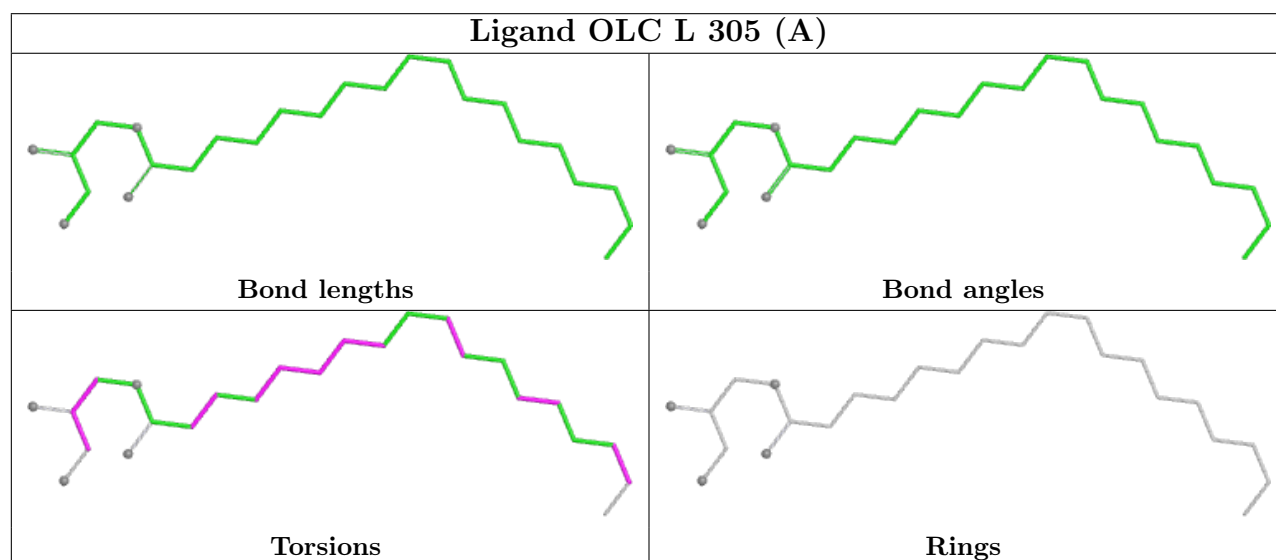
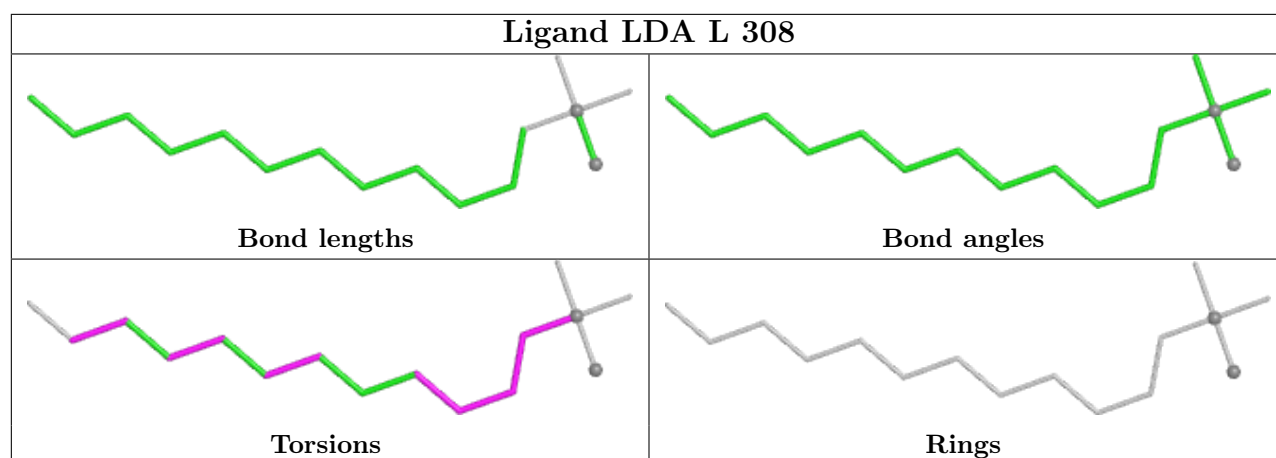
The following is a two-dimensional graphical depiction of Mogul quality analysis of bond lengths, bond angles, torsion angles, and ring geometry for all instances of the Ligand of Interest. In

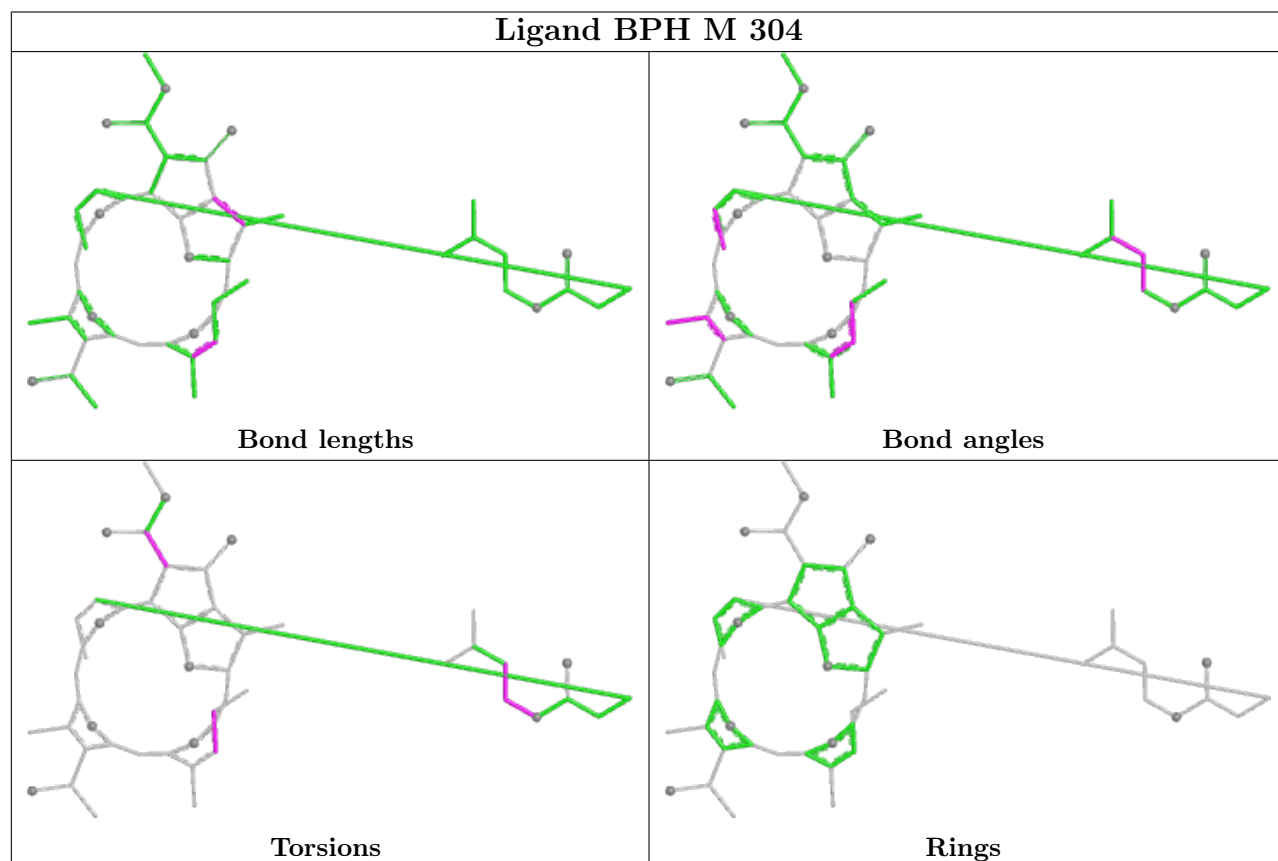
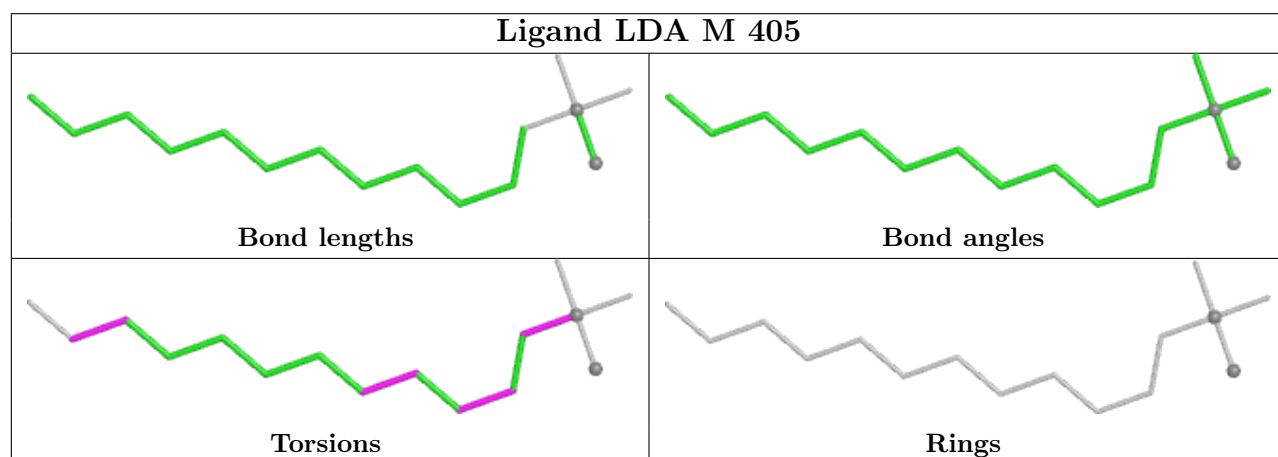
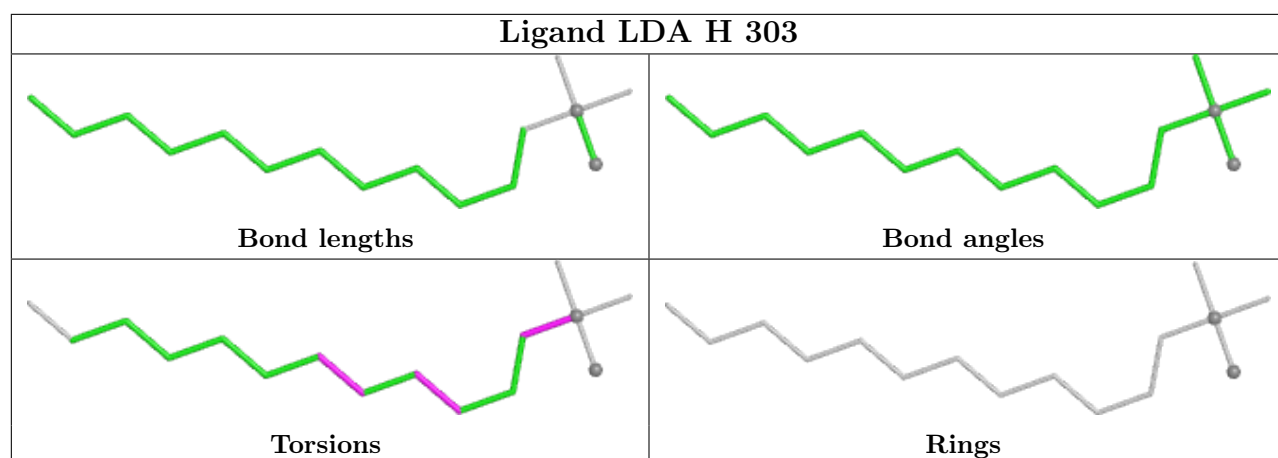
addition, ligands with molecular weight  $> 250$  and outliers as shown on the validation Tables will also be included. For torsion angles, if less than 5% of the Mogul distribution of torsion angles is within 10 degrees of the torsion angle in question, then that torsion angle is considered an outlier. Any bond that is central to one or more torsion angles identified as an outlier by Mogul will be highlighted in the graph. For rings, the root-mean-square deviation (RMSD) between the ring in question and similar rings identified by Mogul is calculated over all ring torsion angles. If the average RMSD is greater than 60 degrees and the minimal RMSD between the ring in question and any Mogul-identified rings is also greater than 60 degrees, then that ring is considered an outlier. The outliers are highlighted in purple. The color gray indicates Mogul did not find sufficient equivalents in the CSD to analyse the geometry.



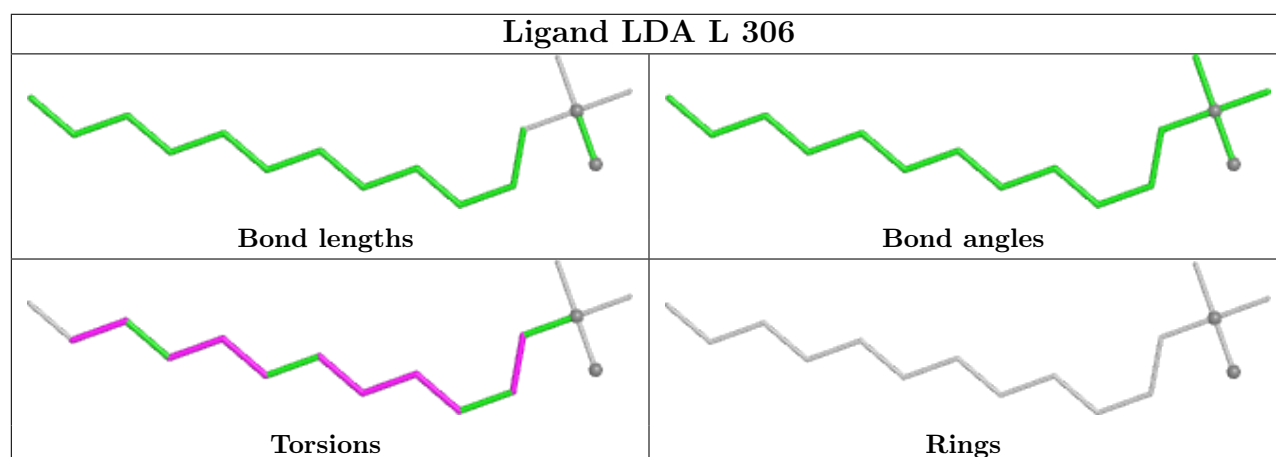
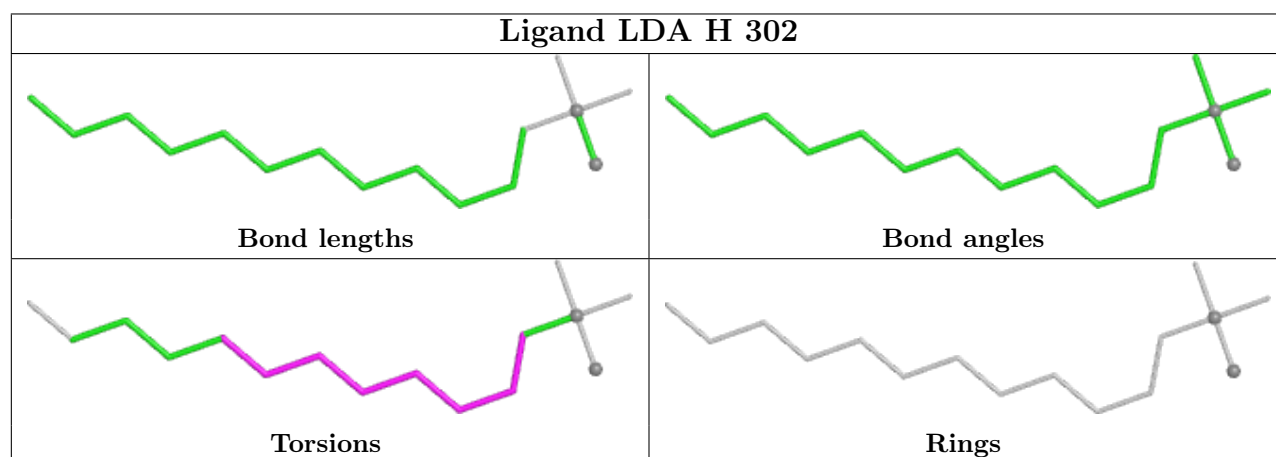
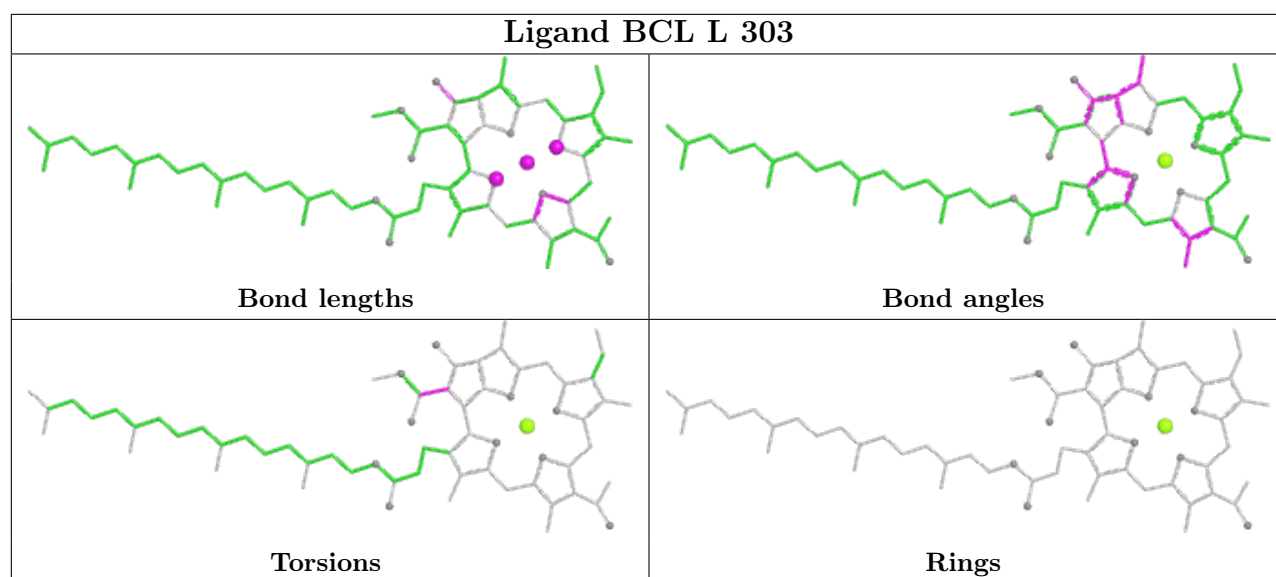


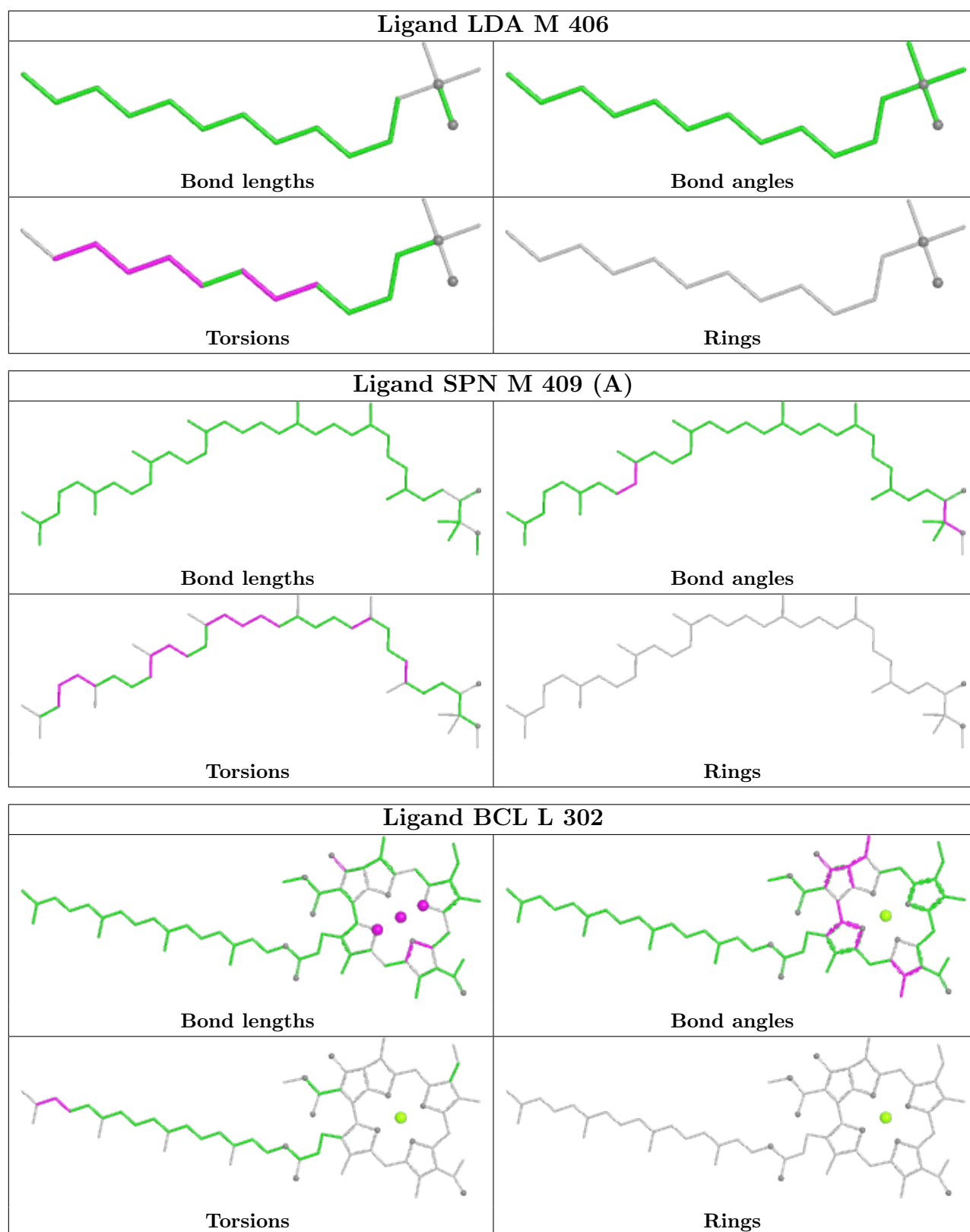


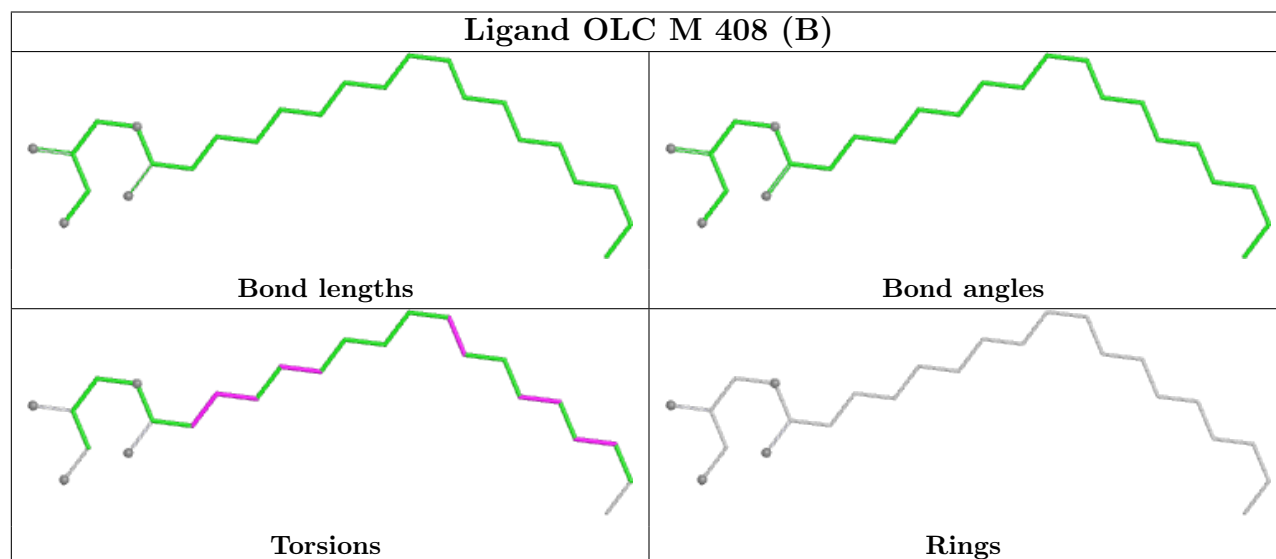
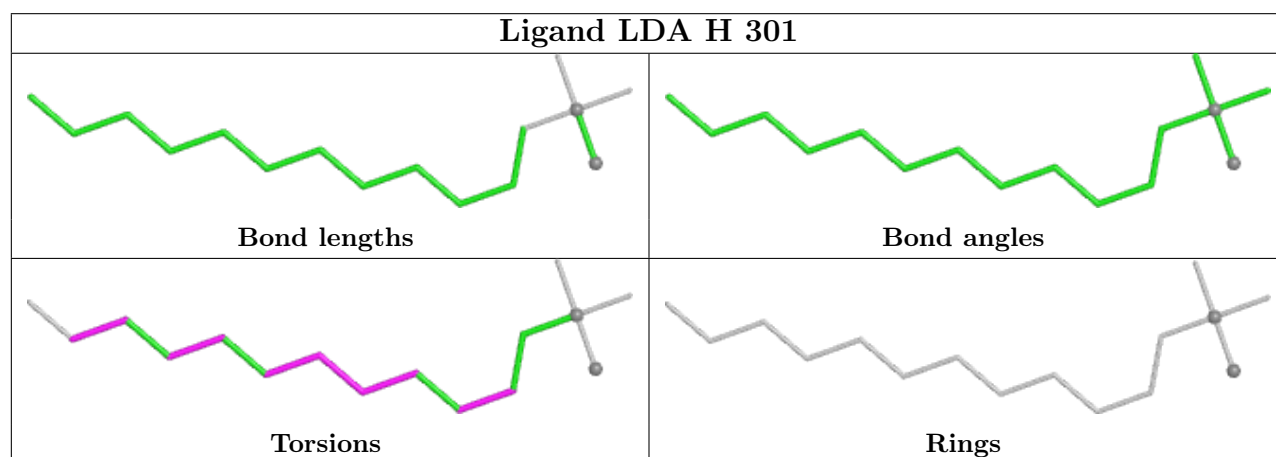
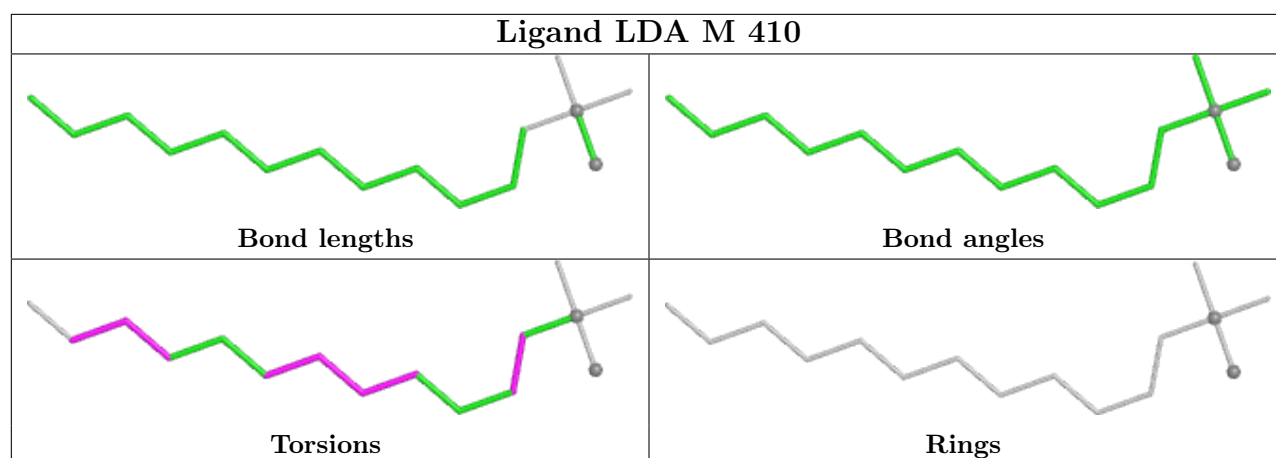


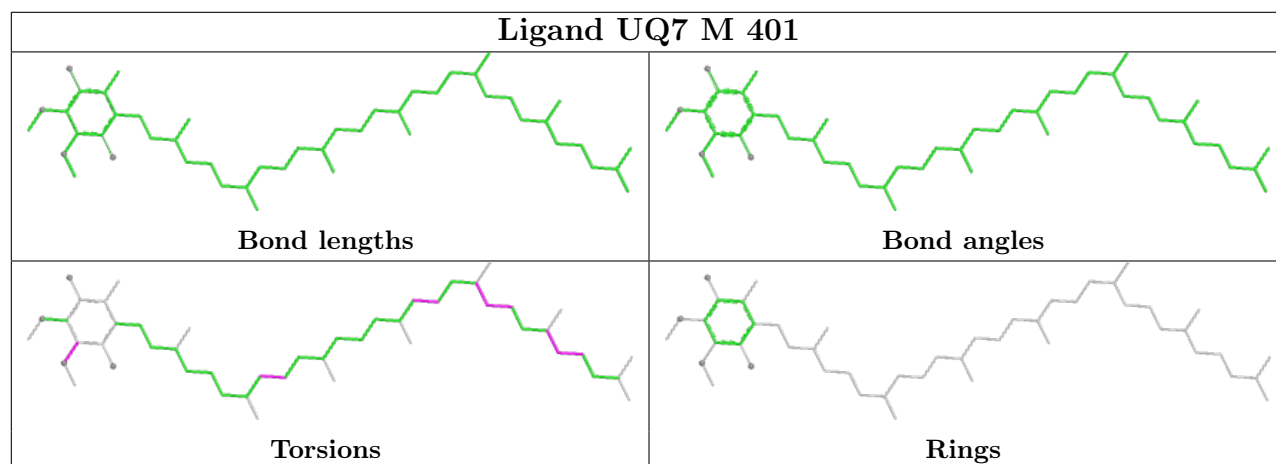
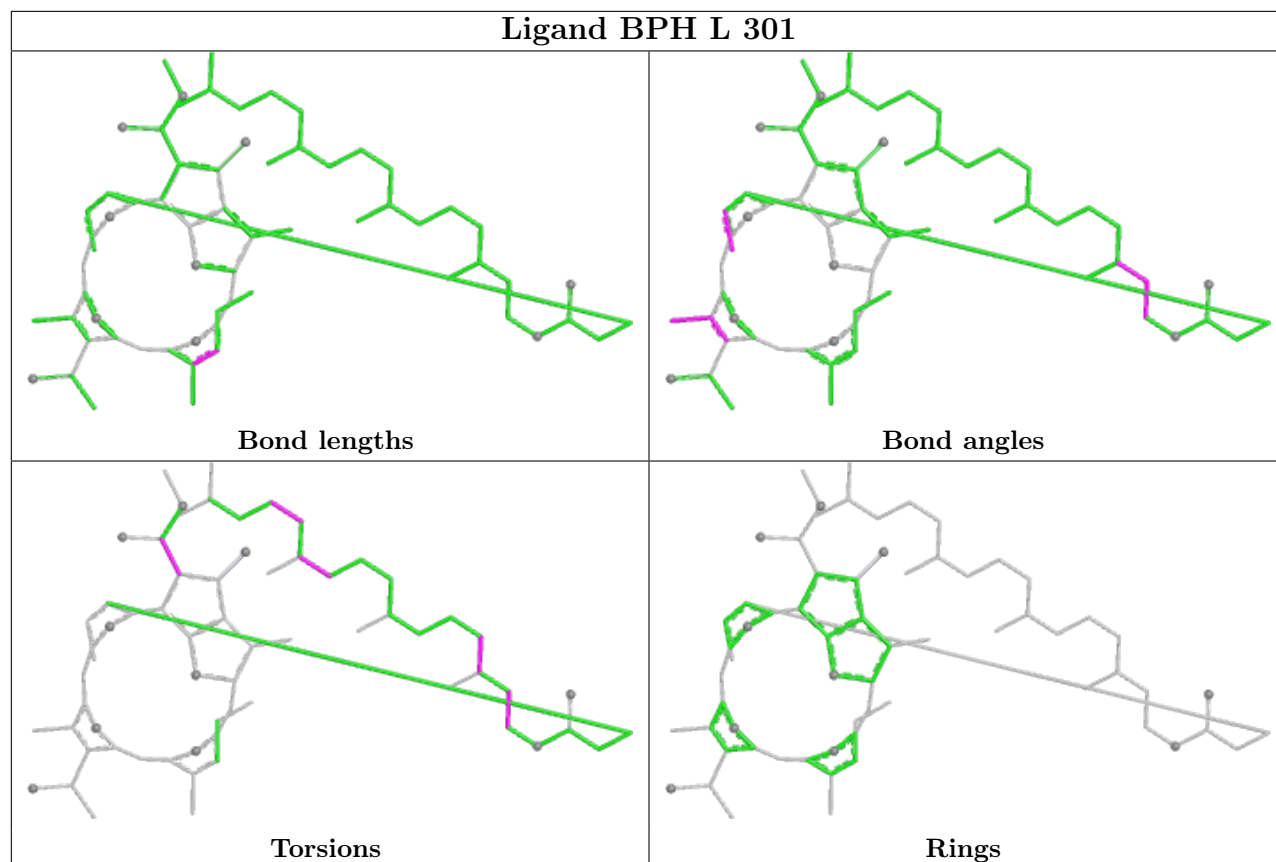


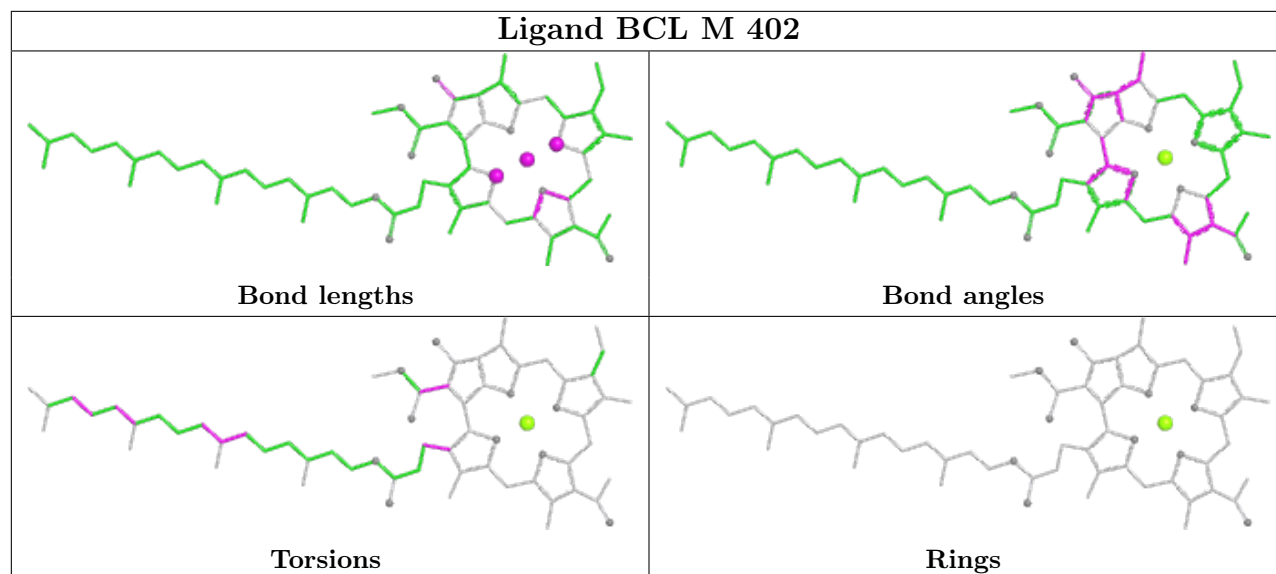












## 5.7 Other polymers [i](#)

There are no such residues in this entry.

## 5.8 Polymer linkage issues [i](#)

There are no chain breaks in this entry.

## 6 Fit of model and data [i](#)

### 6.1 Protein, DNA and RNA chains [i](#)

In the following table, the column labelled ‘#RSRZ> 2’ contains the number (and percentage) of RSRZ outliers, followed by percent RSRZ outliers for the chain as percentile scores relative to all X-ray entries and entries of similar resolution. The OWAB column contains the minimum, median, 95<sup>th</sup> percentile and maximum values of the occupancy-weighted average B-factor per residue. The column labelled ‘Q< 0.9’ lists the number of (and percentage) of residues with an average occupancy less than 0.9.

Mol	Chain	Analysed	<RSRZ>	#RSRZ>2	OWAB(Å <sup>2</sup> )	Q<0.9
1	H	240/241 (99%)	0.02	4 (1%) 70 70	23, 41, 68, 125	0
2	L	280/281 (99%)	-0.12	12 (4%) 35 31	19, 37, 79, 119	0
3	M	300/302 (99%)	-0.12	2 (0%) 87 87	19, 38, 65, 106	0
All	All	820/824 (99%)	-0.08	18 (2%) 62 60	19, 39, 70, 125	0

The worst 5 of 18 RSRZ outliers are listed below:

Mol	Chain	Res	Type	RSRZ
2	L	270	PRO	5.6
1	H	249	LYS	4.1
2	L	265	TRP	3.4
2	L	51[A]	TRP	3.3
2	L	271	TRP	3.3

### 6.2 Non-standard residues in protein, DNA, RNA chains [i](#)

There are no non-standard protein/DNA/RNA residues in this entry.

### 6.3 Carbohydrates [i](#)

There are no monosaccharides in this entry.

### 6.4 Ligands [i](#)

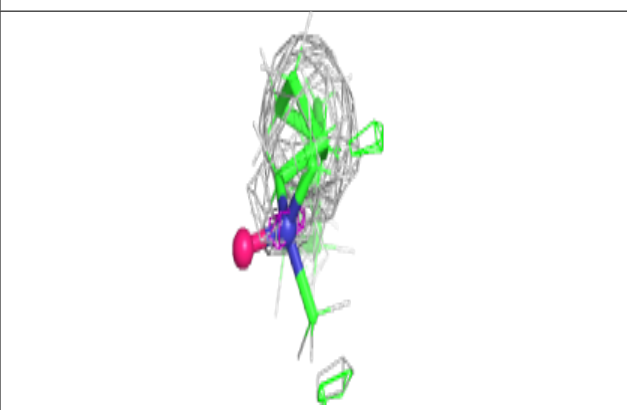
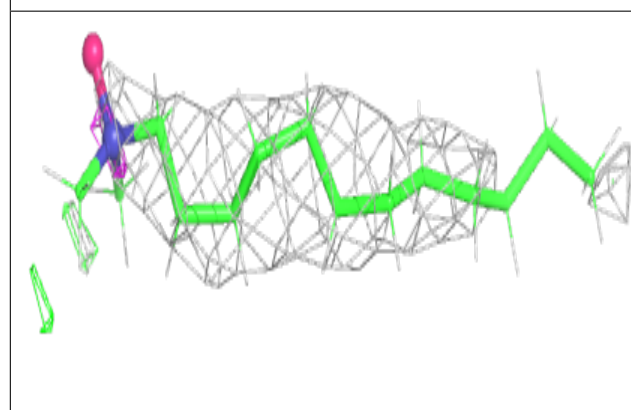
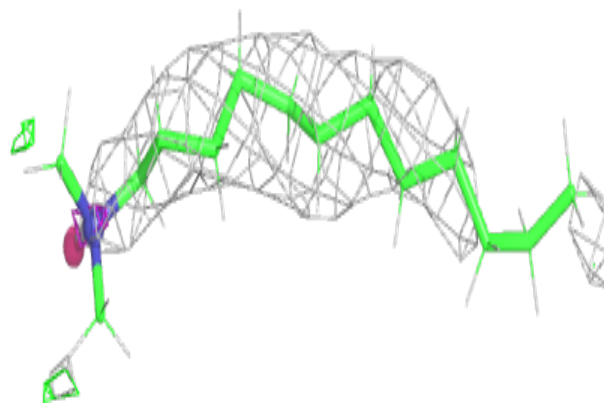
In the following table, the Atoms column lists the number of modelled atoms in the group and the number defined in the chemical component dictionary. The B-factors column lists the minimum, median, 95<sup>th</sup> percentile and maximum values of B factors of atoms in the group. The column labelled ‘Q< 0.9’ lists the number of atoms with occupancy less than 0.9.

Mol	Type	Chain	Res	Atoms	RSCC	RSR	B-factors( $\text{\AA}^2$ )	Q<0.9
4	LDA	M	410	16/16	0.65	0.43	75,91,103,103	0
4	LDA	H	303	16/16	0.69	0.41	79,96,102,103	0
4	LDA	L	308	16/16	0.72	0.56	72,90,107,109	0
4	LDA	L	306	16/16	0.73	0.44	63,77,87,87	47
4	LDA	M	405	16/16	0.74	0.35	50,69,81,81	0
12	CIT	M	412	13/13	0.75	0.30	66,69,82,85	21
4	LDA	H	302	16/16	0.77	0.33	70,86,105,106	0
4	LDA	L	307	16/16	0.79	0.33	75,91,101,101	0
7	OLC	L	305[B]	25/25	0.80	0.38	51,63,68,68	65
7	OLC	L	305[A]	25/25	0.80	0.38	51,63,68,68	65
4	LDA	M	406	16/16	0.82	0.30	45,61,68,68	0
4	LDA	H	301	16/16	0.85	0.28	50,65,85,85	0
7	OLC	M	408[B]	25/25	0.86	0.27	39,50,62,62	65
11	SPN	M	409[A]	43/43	0.87	0.36	26,46,62,62	113
8	UQ7	M	401	48/48	0.90	0.26	30,56,78,79	0
10	PO4	M	411	5/5	0.91	0.27	72,73,73,73	5
6	BCL	M	402	66/66	0.94	0.18	32,44,74,77	0
5	BPH	L	301	65/65	0.95	0.18	23,33,48,52	0
6	BCL	M	403	51/66	0.95	0.15	24,32,54,60	0
5	BPH	M	304	50/65	0.95	0.16	25,37,53,55	0
6	BCL	L	303	66/66	0.96	0.16	26,37,53,56	0
6	BCL	L	302	66/66	0.96	0.17	23,36,57,59	0
10	PO4	M	407	5/5	0.97	0.15	62,63,65,66	0
13	CL	M	413	1/1	0.97	0.13	48,48,48,48	0
9	FE	M	404	1/1	0.98	0.13	20,20,20,20	0

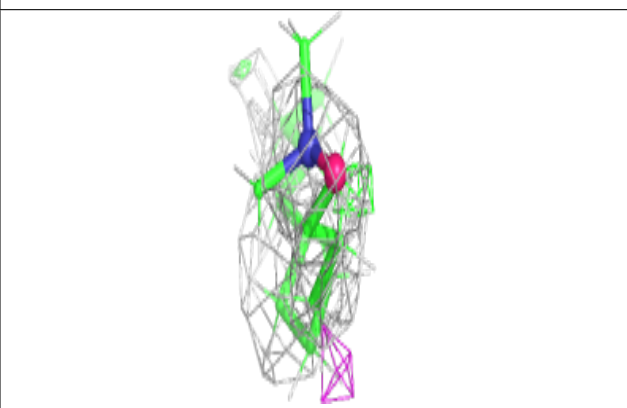
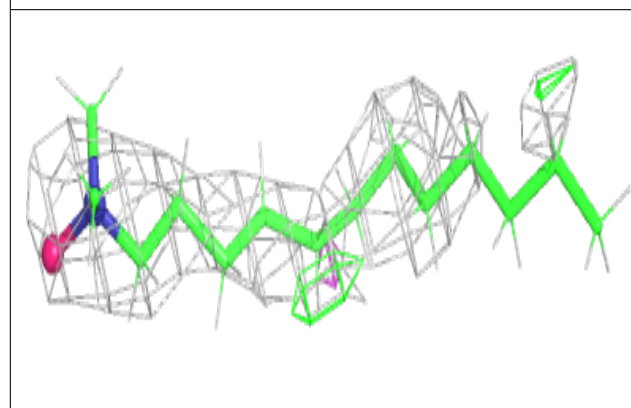
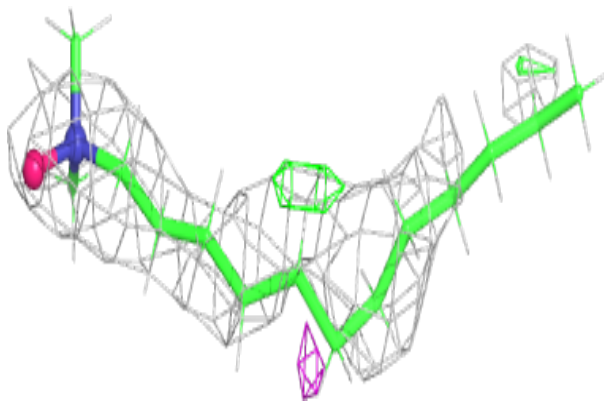
The following is a graphical depiction of the model fit to experimental electron density of all instances of the Ligand of Interest. In addition, ligands with molecular weight > 250 and outliers as shown on the geometry validation Tables will also be included. Each fit is shown from different orientation to approximate a three-dimensional view.

**Electron density around LDA M 410:**

$2mF_o-DF_c$  (at 0.7 rmsd) in gray  
 $mF_o-DF_c$  (at 3 rmsd) in purple (negative)  
and green (positive)

**Electron density around LDA H 303:**

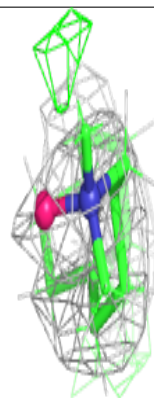
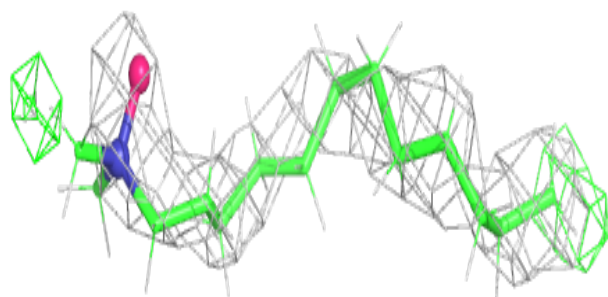
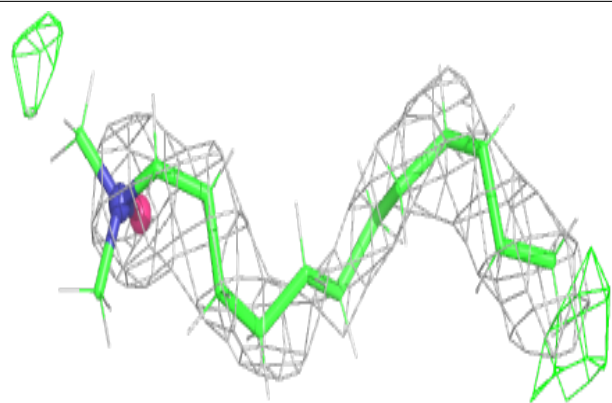
$2mF_o-DF_c$  (at 0.7 rmsd) in gray  
 $mF_o-DF_c$  (at 3 rmsd) in purple (negative)  
and green (positive)



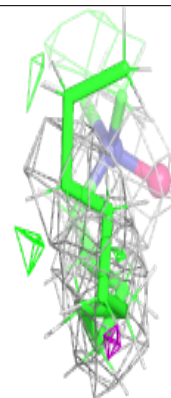
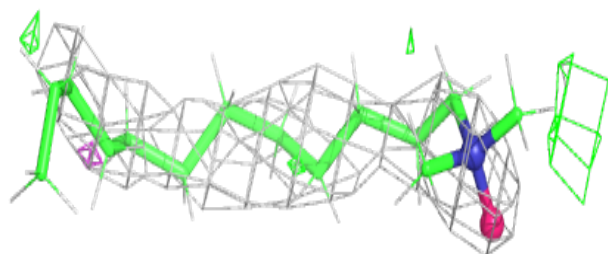
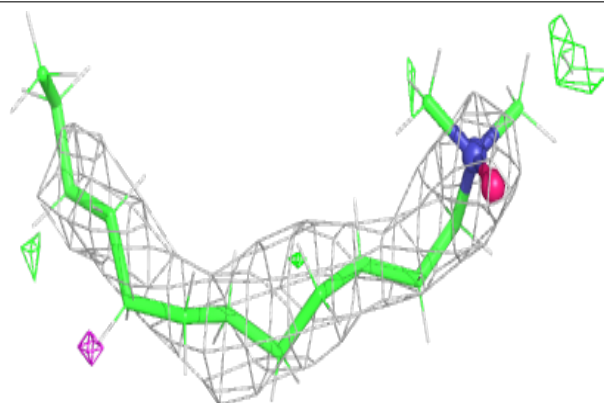


**Electron density around LDA L 308:**

$2mF_o-DF_c$  (at 0.7 rmsd) in gray  
 $mF_o-DF_c$  (at 3 rmsd) in purple (negative)  
and green (positive)

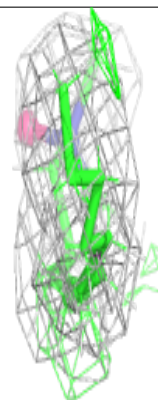
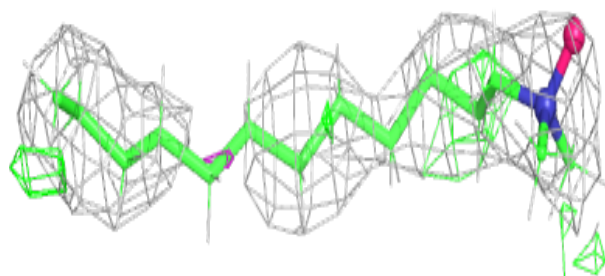
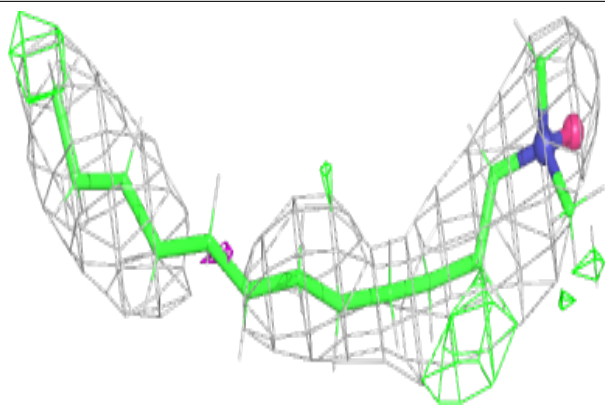
**Electron density around LDA L 306:**

$2mF_o-DF_c$  (at 0.7 rmsd) in gray  
 $mF_o-DF_c$  (at 3 rmsd) in purple (negative)  
and green (positive)

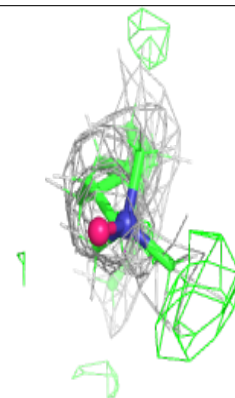
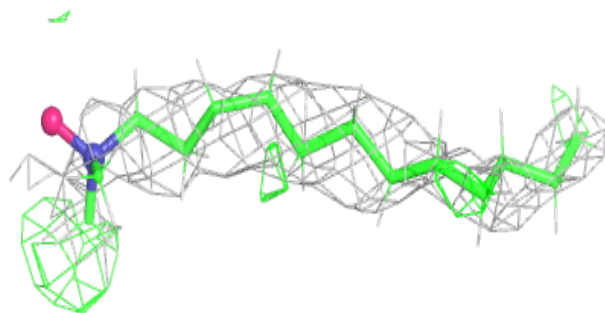
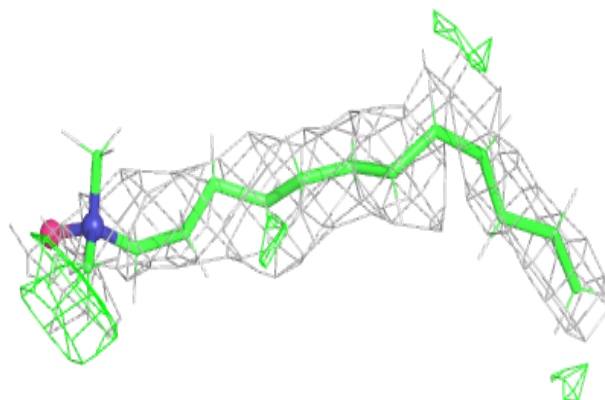


**Electron density around LDA M 405:**

$2mF_o-DF_c$  (at 0.7 rmsd) in gray  
 $mF_o-DF_c$  (at 3 rmsd) in purple (negative)  
and green (positive)

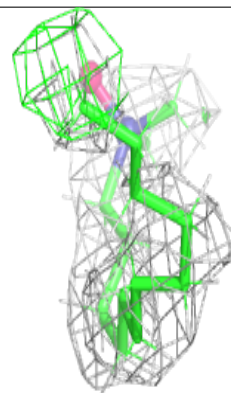
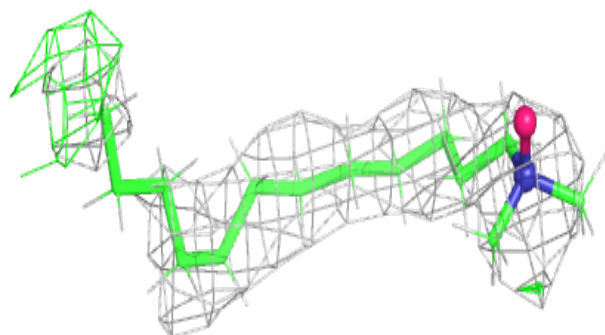
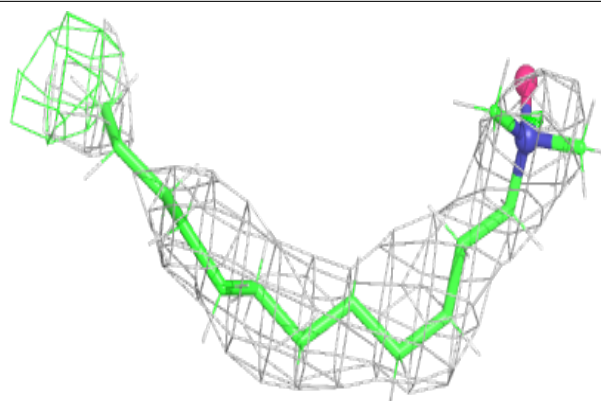
**Electron density around LDA H 302:**

$2mF_o-DF_c$  (at 0.7 rmsd) in gray  
 $mF_o-DF_c$  (at 3 rmsd) in purple (negative)  
and green (positive)

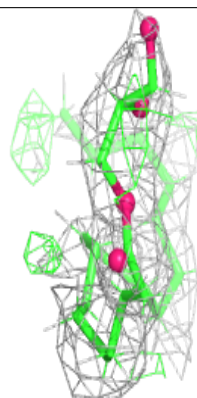
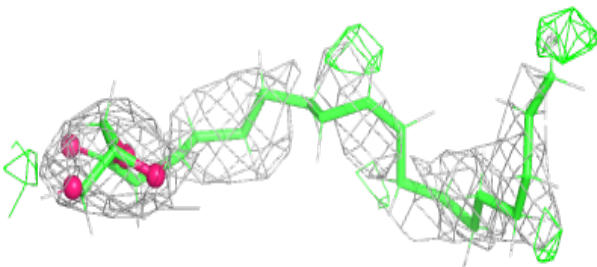
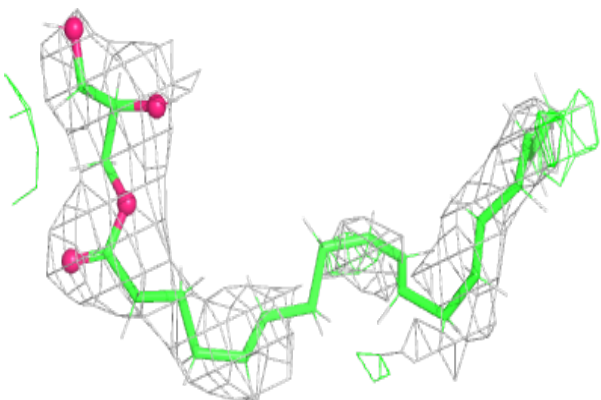


**Electron density around LDA L 307:**

$2mF_o-DF_c$  (at 0.7 rmsd) in gray  
 $mF_o-DF_c$  (at 3 rmsd) in purple (negative)  
and green (positive)

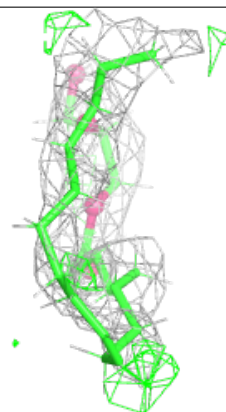
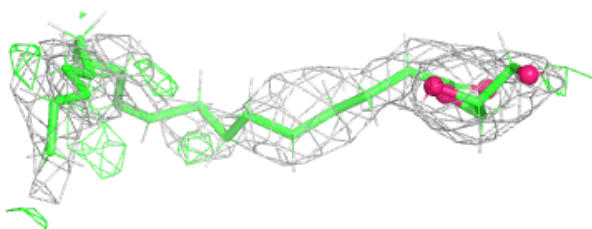
**Electron density around OLC L 305 (B):**

$2mF_o-DF_c$  (at 0.7 rmsd) in gray  
 $mF_o-DF_c$  (at 3 rmsd) in purple (negative)  
and green (positive)

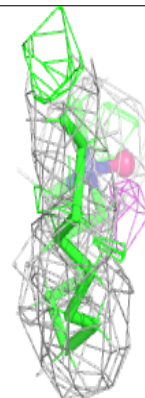
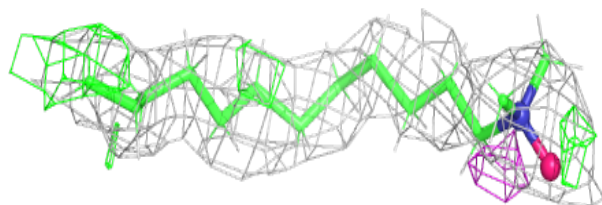
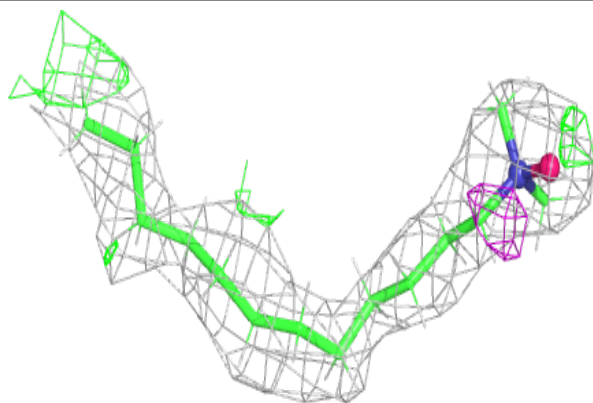


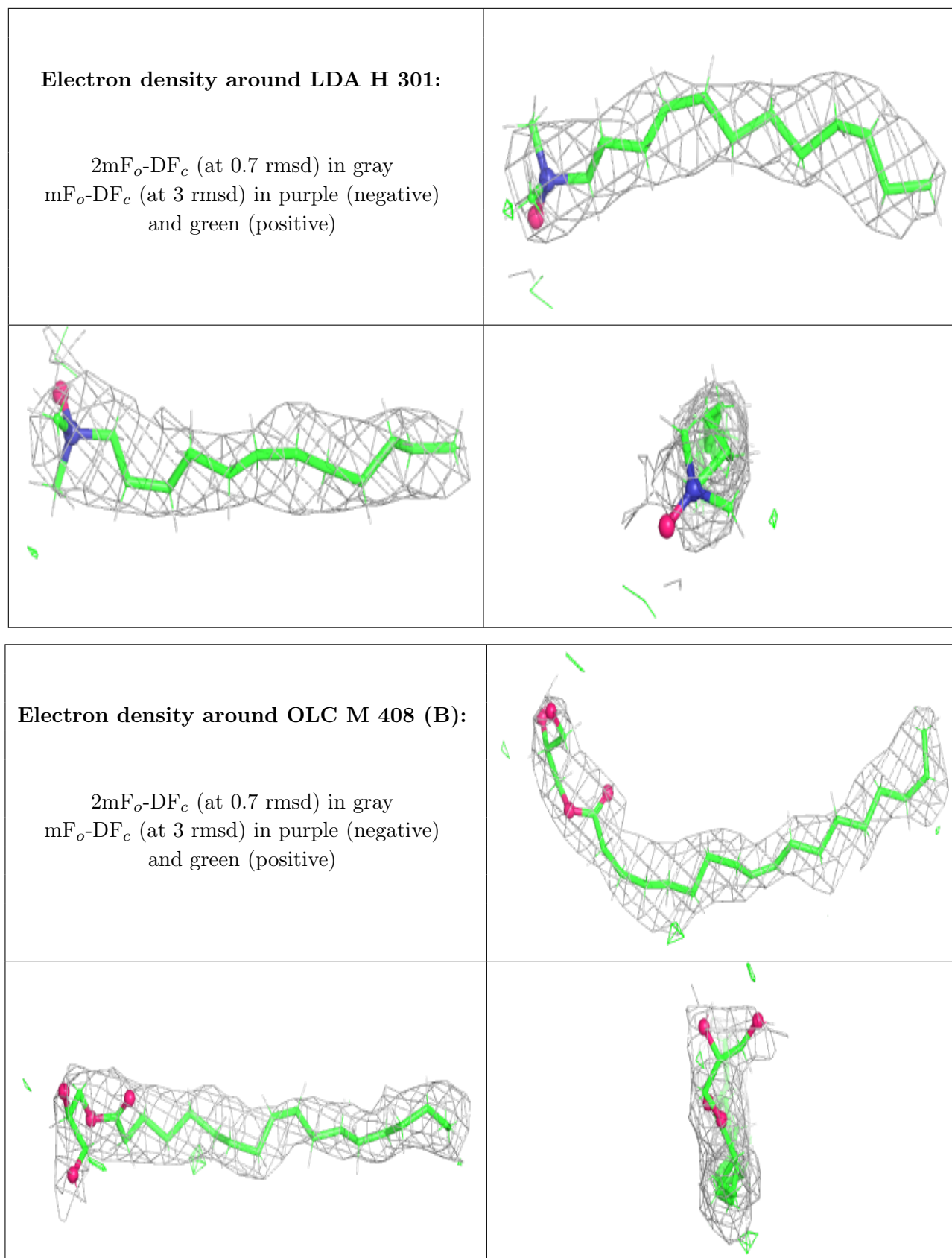
**Electron density around OLC L 305 (A):**

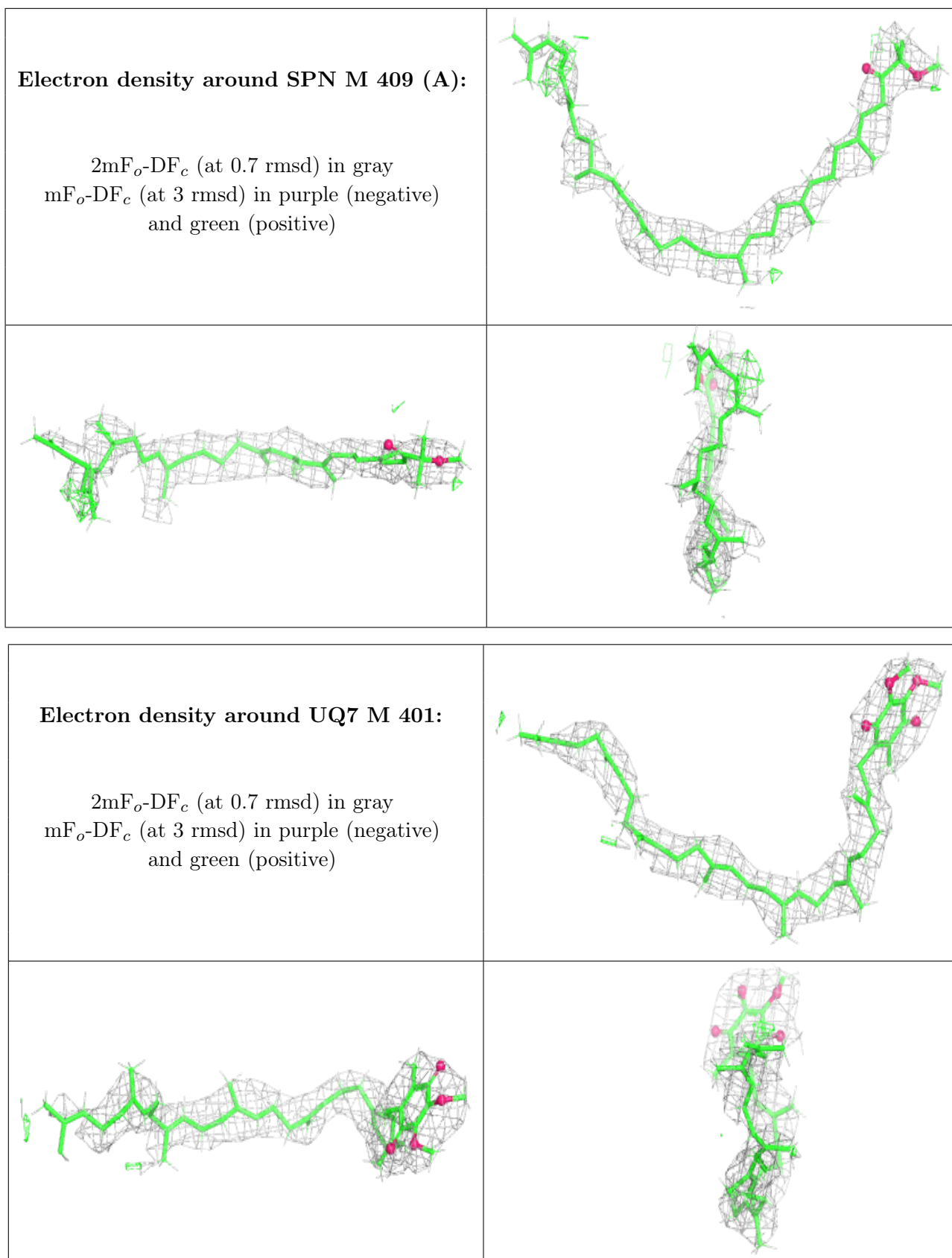
$2mF_o-DF_c$  (at 0.7 rmsd) in gray  
 $mF_o-DF_c$  (at 3 rmsd) in purple (negative)  
and green (positive)

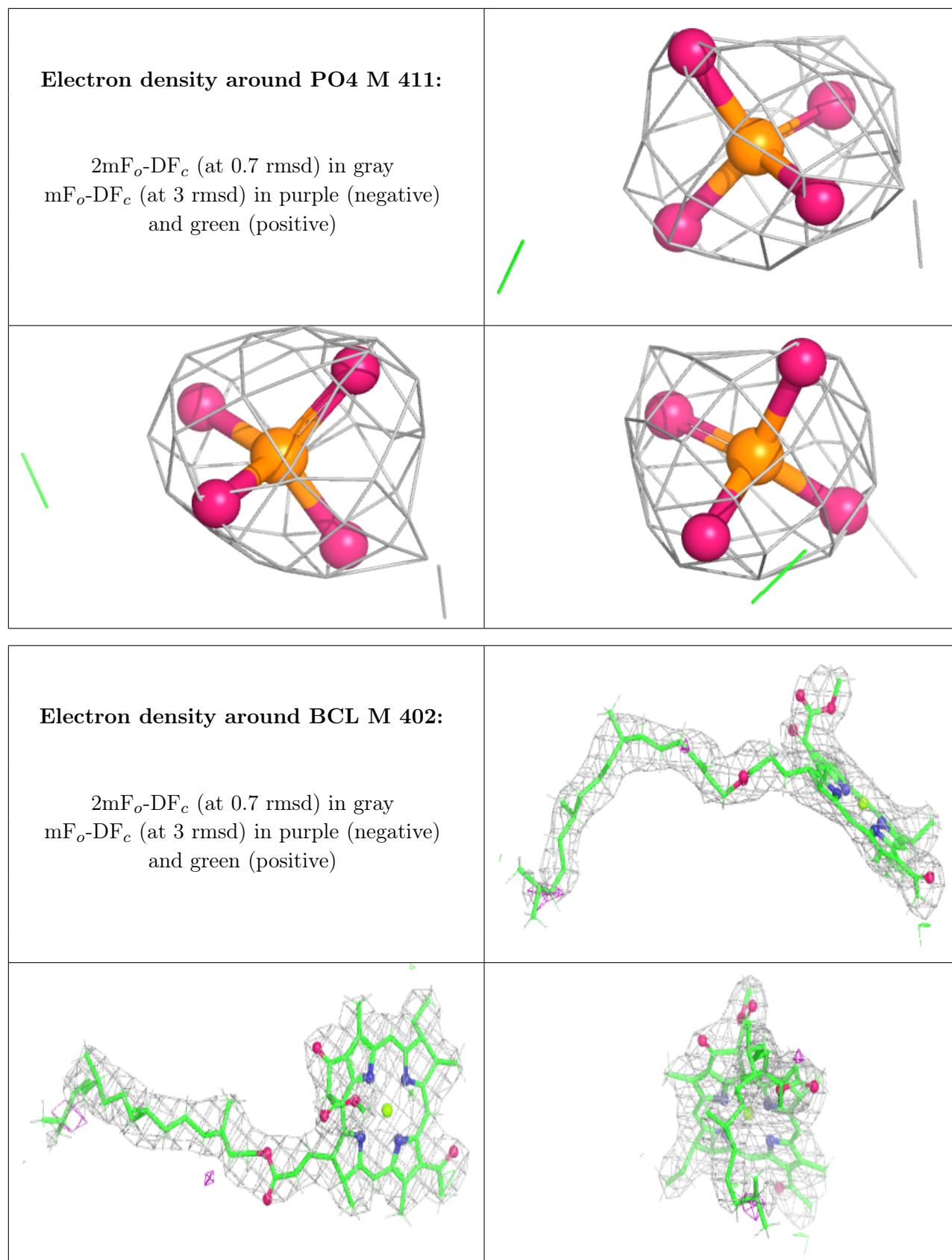
**Electron density around LDA M 406:**

$2mF_o-DF_c$  (at 0.7 rmsd) in gray  
 $mF_o-DF_c$  (at 3 rmsd) in purple (negative)  
and green (positive)



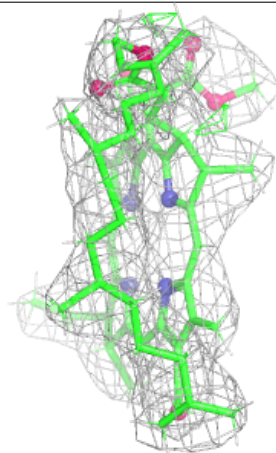
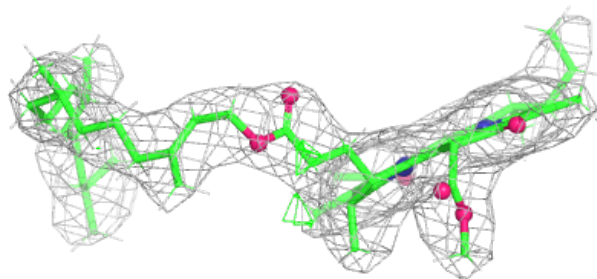
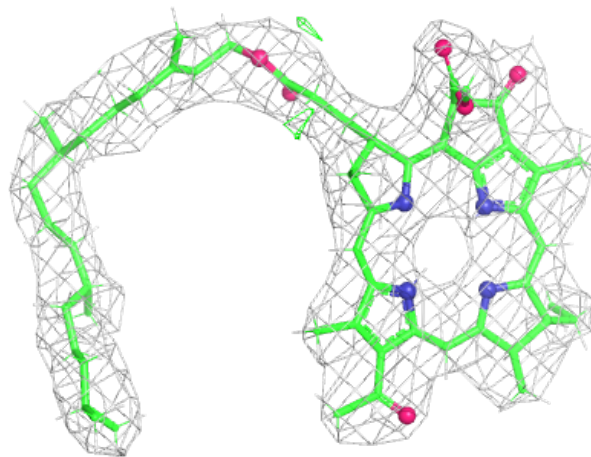






**Electron density around BPH L 301:**

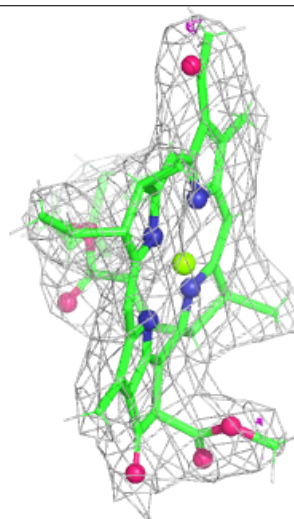
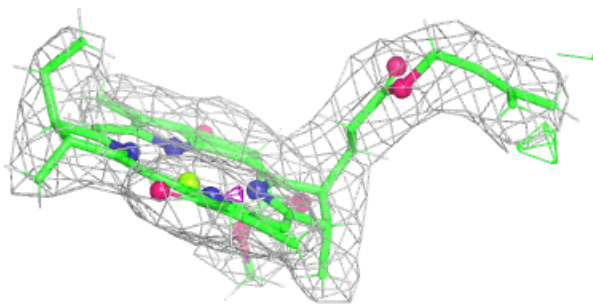
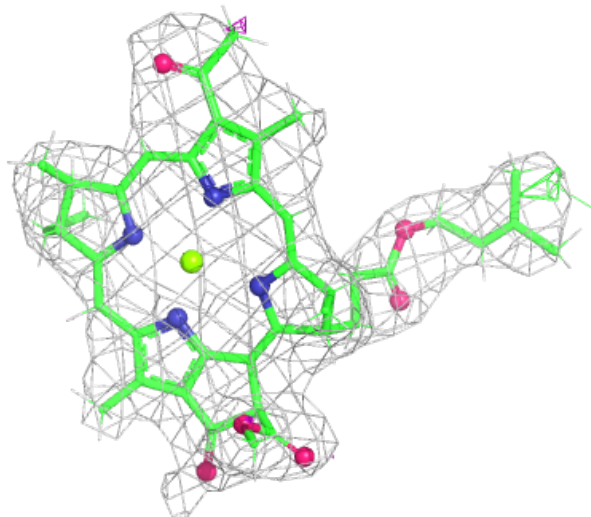
$2mF_o-DF_c$  (at 0.7 rmsd) in gray  
 $mF_o-DF_c$  (at 3 rmsd) in purple (negative)  
and green (positive)





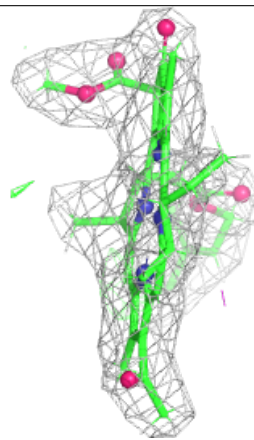
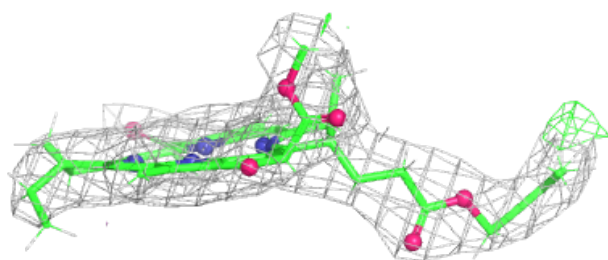
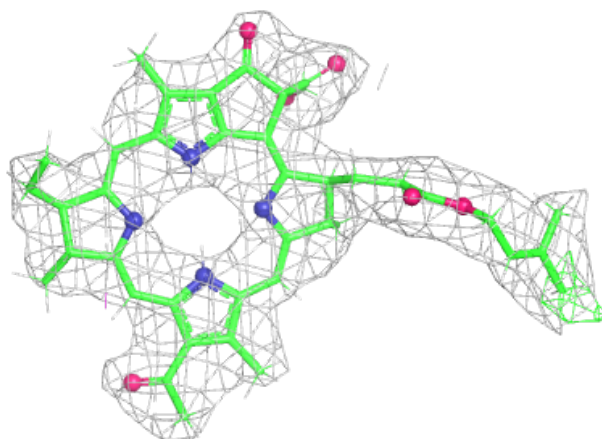
**Electron density around BCL M 403:**

$2mF_o-DF_c$  (at 0.7 rmsd) in gray  
 $mF_o-DF_c$  (at 3 rmsd) in purple (negative)  
and green (positive)

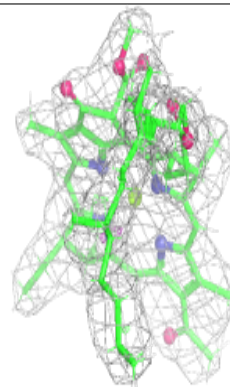
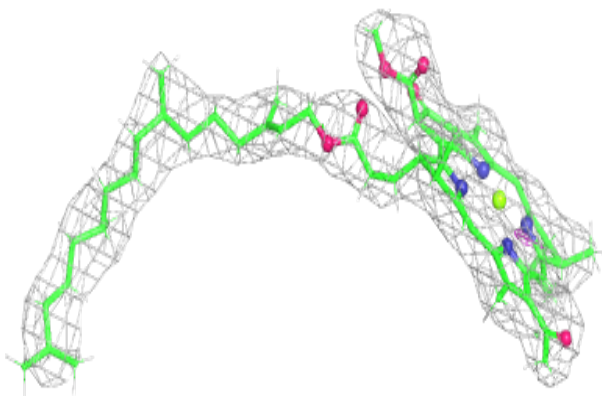


**Electron density around BPH M 304:**

$2mF_o-DF_c$  (at 0.7 rmsd) in gray  
 $mF_o-DF_c$  (at 3 rmsd) in purple (negative)  
and green (positive)

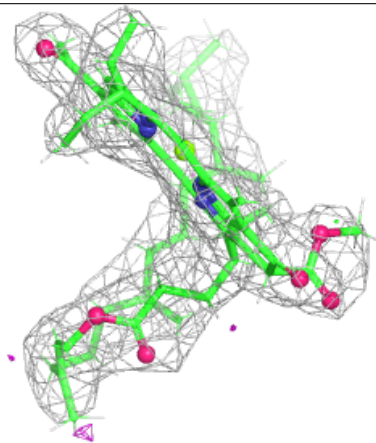
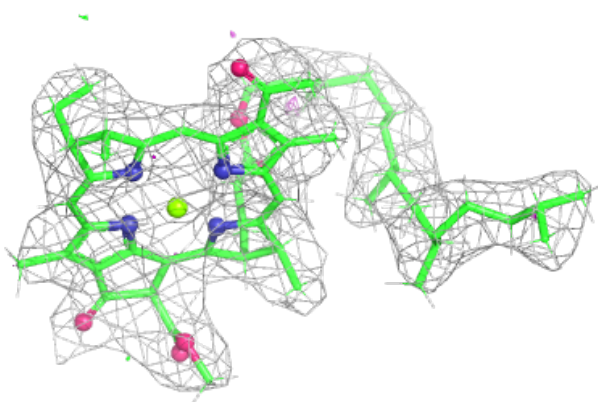
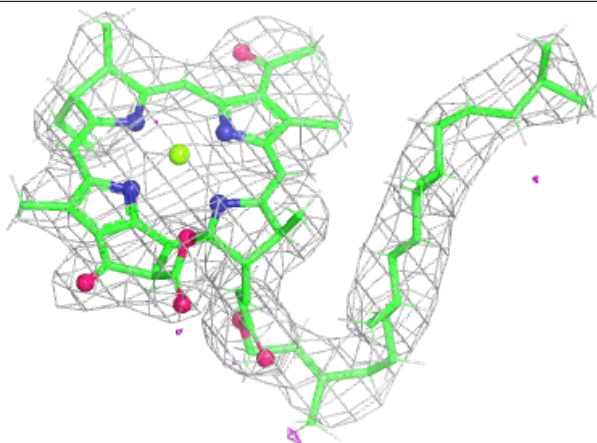
**Electron density around BCL L 303:**

$2mF_o-DF_c$  (at 0.7 rmsd) in gray  
 $mF_o-DF_c$  (at 3 rmsd) in purple (negative)  
and green (positive)



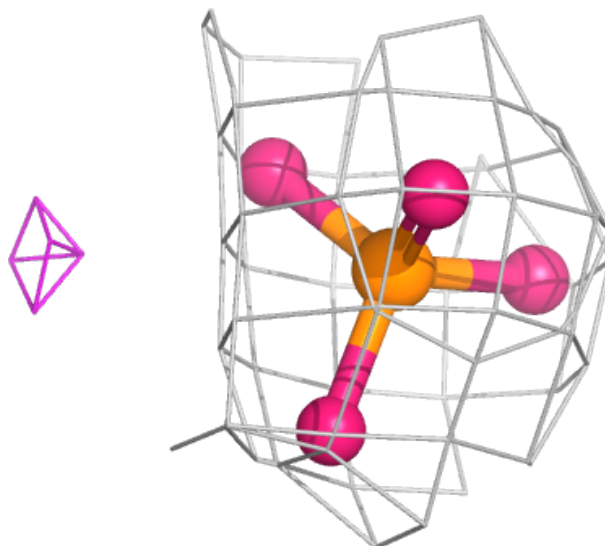
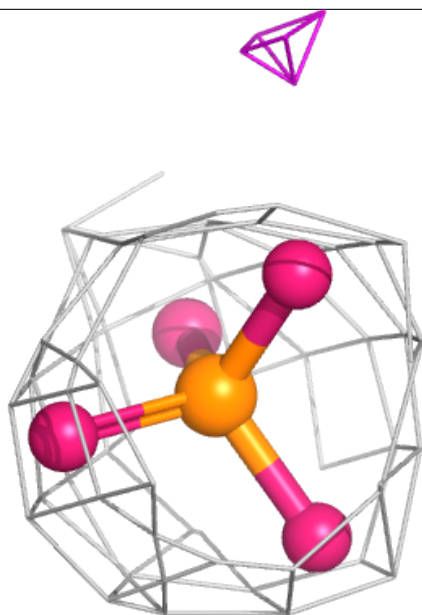
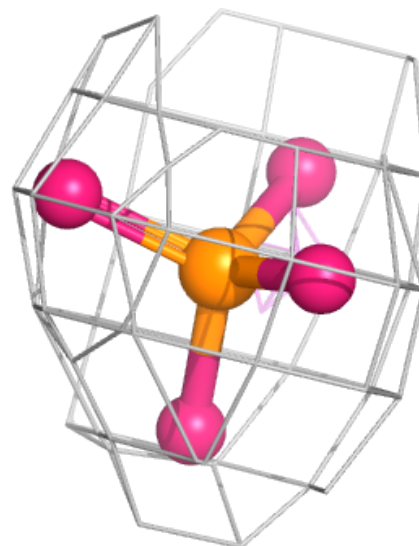
**Electron density around BCL L 302:**

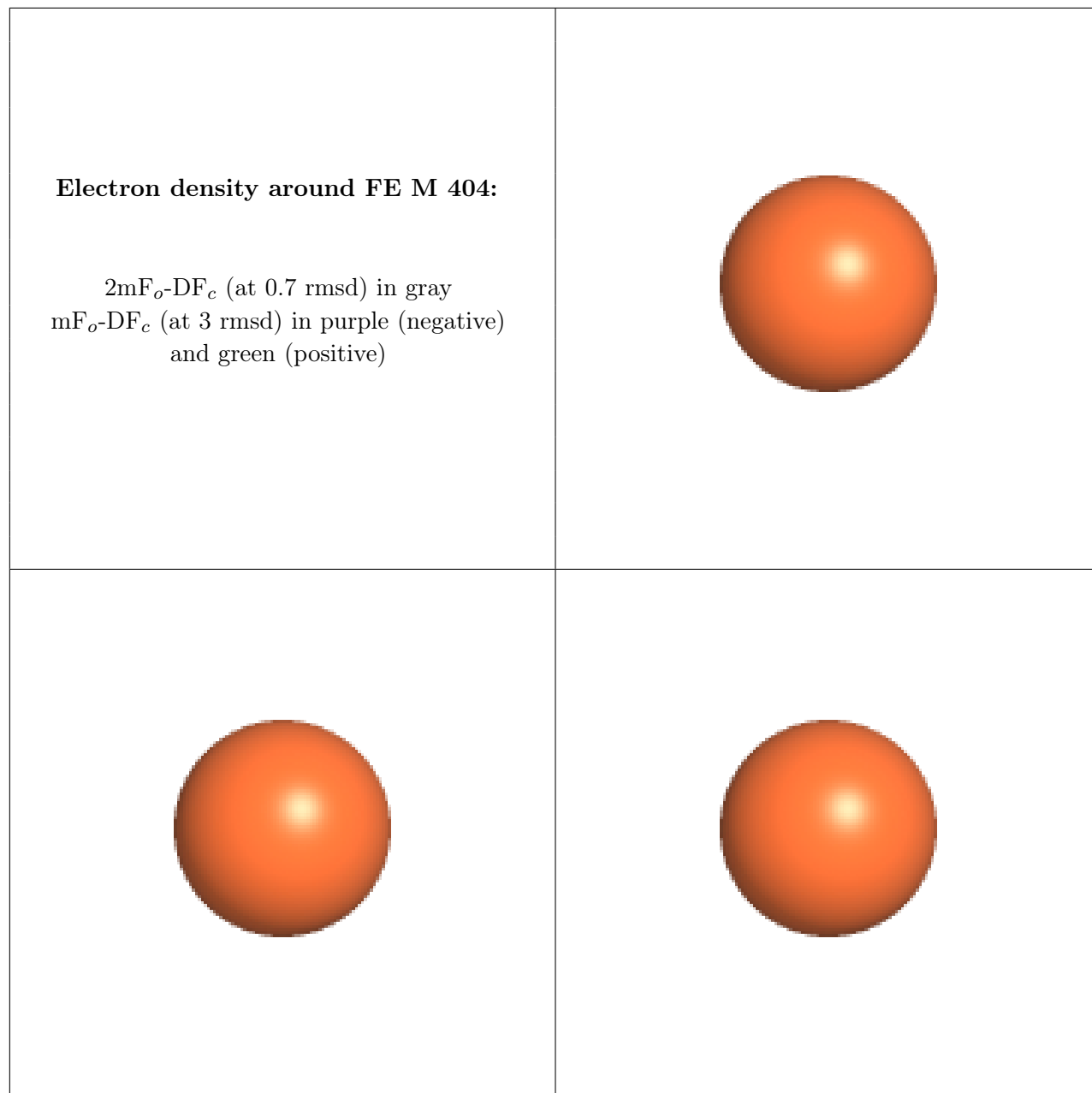
$2mF_o-DF_c$  (at 0.7 rmsd) in gray  
 $mF_o-DF_c$  (at 3 rmsd) in purple (negative)  
and green (positive)



**Electron density around PO4 M 407:**

$2mF_o-DF_c$  (at 0.7 rmsd) in gray  
 $mF_o-DF_c$  (at 3 rmsd) in purple (negative)  
and green (positive)





## 6.5 Other polymers [i](#)

There are no such residues in this entry.