



wwPDB X-ray Structure Validation Summary Report ⓘ

Nov 14, 2022 – 12:06 pm GMT

PDB ID : 7Q8I
Title : Peptide AVAEKQ in complex with human cathepsin V C25S mutant
Authors : Loboda, J.; Sosnowski, P.; Tusar, L.; Vidmar, R.; Vizovisek, M.; Horvat, J.;
Kosec, G.; Impens, F.; Demol, H.; Turk, B.; Gevaert, K.; Turk, D.
Deposited on : 2021-11-11
Resolution : 1.59 Å(reported)

This is a wwPDB X-ray Structure Validation Summary Report for a publicly released PDB entry.

We welcome your comments at validation@mail.wwpdb.org

A user guide is available at

<https://www.wwpdb.org/validation/2017/XrayValidationReportHelp>

with specific help available everywhere you see the ⓘ symbol.

The types of validation reports are described at

<http://www.wwpdb.org/validation/2017/FAQs#types>.

The following versions of software and data (see [references ⓘ](#)) were used in the production of this report:

MolProbity : 4.02b-467
Mogul : 1.8.4, CSD as541be (2020)
Xtriage (Phenix) : 1.13
EDS : 2.31.2
Percentile statistics : 20191225.v01 (using entries in the PDB archive December 25th 2019)
Refmac : 5.8.0267
CCP4 : 7.1.010 (Gargrove)
Ideal geometry (proteins) : Engh & Huber (2001)
Ideal geometry (DNA, RNA) : Parkinson et al. (1996)
Validation Pipeline (wwPDB-VP) : 2.31.2

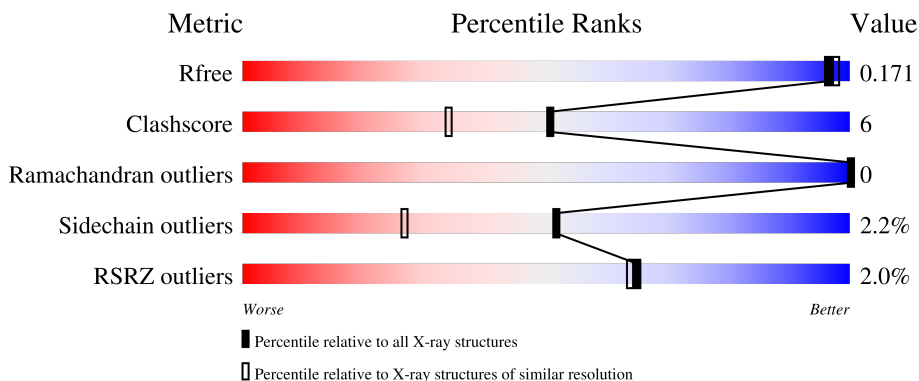
1 Overall quality at a glance

The following experimental techniques were used to determine the structure:

X-RAY DIFFRACTION

The reported resolution of this entry is 1.59 Å.

Percentile scores (ranging between 0-100) for global validation metrics of the entry are shown in the following graphic. The table shows the number of entries on which the scores are based.



Metric	Whole archive (#Entries)	Similar resolution (#Entries, resolution range(Å))
R_{free}	130704	3398 (1.60-1.60)
Clashscore	141614	3665 (1.60-1.60)
Ramachandran outliers	138981	3564 (1.60-1.60)
Sidechain outliers	138945	3563 (1.60-1.60)
RSRZ outliers	127900	3321 (1.60-1.60)

The table below summarises the geometric issues observed across the polymeric chains and their fit to the electron density. The red, orange, yellow and green segments of the lower bar indicate the fraction of residues that contain outliers for ≥ 3 , 2, 1 and 0 types of geometric quality criteria respectively. A grey segment represents the fraction of residues that are not modelled. The numeric value for each fraction is indicated below the corresponding segment, with a dot representing fractions $\leq 5\%$. The upper red bar (where present) indicates the fraction of residues that have poor fit to the electron density. The numeric value is given above the bar.

Mol	Chain	Length	Quality of chain
1	AA	222	
1	BA	222	
2	PA	6	
2	PB	6	

2 Entry composition

There are 6 unique types of molecules in this entry. The entry contains 8077 atoms, of which 4149 are hydrogens and 0 are deuteriums.

In the tables below, the ZeroOcc column contains the number of atoms modelled with zero occupancy, the AltConf column contains the number of residues with at least one atom in alternate conformation and the Trace column contains the number of residues modelled with at most 2 atoms.

- Molecule 1 is a protein called Cathepsin L2.

Mol	Chain	Residues	Atoms					ZeroOcc	AltConf	Trace	
			Total	C	H	N	O				S
1	AA	222	3325	1069	1627	291	328	10	1635	0	0
1	BA	221	3351	1077	1638	294	331	11	1639	3	0

There are 6 discrepancies between the modelled and reference sequences:

Chain	Residue	Modelled	Actual	Comment	Reference
AA	26	SER	CYS	engineered mutation	UNP O60911
AA	109	GLN	ASN	engineered mutation	UNP O60911
AA	180	GLN	ASN	engineered mutation	UNP O60911
BA	247	SER	CYS	engineered mutation	UNP O60911
BA	330	GLN	ASN	engineered mutation	UNP O60911
BA	401	GLN	ASN	engineered mutation	UNP O60911

- Molecule 2 is a protein called AVAEKQ peptide.

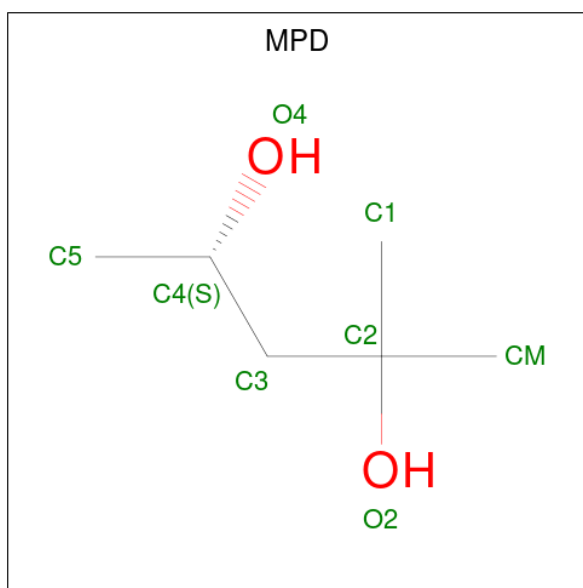
Mol	Chain	Residues	Atoms					ZeroOcc	AltConf	Trace
			Total	C	H	N	O			
2	PA	5	72	22	37	6	7	37	0	0
2	PB	6	90	27	45	8	10	45	0	0

- Molecule 3 is CHLORIDE ION (three-letter code: CL) (formula: Cl).

Mol	Chain	Residues	Atoms		ZeroOcc	AltConf
3	AA	2	Total	Cl	0	0
			2	2		
3	BA	1	Total	Cl	0	0
			1	1		

- Molecule 4 is (4S)-2-METHYL-2,4-PENTANEDIOL (three-letter code: MPD) (formula:

C₆H₁₄O₂).



Mol	Chain	Residues	Atoms	ZeroOcc	AltConf
4	AA	1	Total C O 8 6 2	0	0
4	AA	1	Total C O 8 6 2	0	0
4	AA	1	Total C O 8 6 2	0	0
4	BA	1	Total C O 8 6 2	0	0

- Molecule 5 is SODIUM ION (three-letter code: NA) (formula: Na).

Mol	Chain	Residues	Atoms	ZeroOcc	AltConf
5	BA	1	Total Na 1 1	0	0

- Molecule 6 is water.

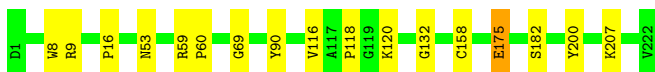
Mol	Chain	Residues	Atoms	ZeroOcc	AltConf
6	AA	207	Total H O 621 414 207	414	0
6	BA	184	Total H O 552 368 184	368	0
6	PA	2	Total H O 6 4 2	4	0
6	PB	8	Total H O 24 16 8	16	0

3 Residue-property plots [i](#)


These plots are drawn for all protein, RNA, DNA and oligosaccharide chains in the entry. The first graphic for a chain summarises the proportions of the various outlier classes displayed in the second graphic. The second graphic shows the sequence view annotated by issues in geometry and electron density. Residues are color-coded according to the number of geometric quality criteria for which they contain at least one outlier: green = 0, yellow = 1, orange = 2 and red = 3 or more. A red dot above a residue indicates a poor fit to the electron density ($RSRZ > 2$). Stretches of 2 or more consecutive residues without any outlier are shown as a green connector. Residues present in the sample, but not in the model, are shown in grey.

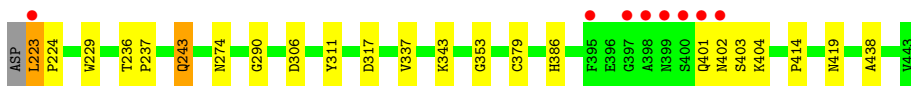
- Molecule 1: Cathepsin L2

Chain AA:  92% 7%




- Molecule 1: Cathepsin L2

Chain BA:  4% 89% 9%




- Molecule 2: AVAEKQ peptide

Chain PA:  17% 83% 17%



- Molecule 2: AVAEKQ peptide

Chain PB:  83% 17%



4 Data and refinement statistics

Property	Value	Source
Space group	P 43 21 2	Depositor
Cell constants a, b, c, α , β , γ	93.48Å 93.48Å 125.87Å 90.00° 90.00° 90.00°	Depositor
Resolution (Å)	46.74 – 1.59 46.74 – 1.59	Depositor EDS
% Data completeness (in resolution range)	100.0 (46.74-1.59) 99.9 (46.74-1.59)	Depositor EDS
R_{merge}	(Not available)	Depositor
R_{sym}	(Not available)	Depositor
$\langle I/\sigma(I) \rangle$ ¹	2.14 (at 1.59Å)	Xtrriage
Refinement program	MAIN	Depositor
R, R_{free}	0.169 , 0.189 0.166 , 0.171	Depositor DCC
R_{free} test set	2100 reflections (2.78%)	wwPDB-VP
Wilson B-factor (Å ²)	15.8	Xtrriage
Anisotropy	0.310	Xtrriage
Bulk solvent k_{sol} (e/Å ³), B_{sol} (Å ²)	(Not available) , (Not available)	EDS
L-test for twinning ²	$\langle L \rangle = 0.48$, $\langle L^2 \rangle = 0.31$	Xtrriage
Estimated twinning fraction	No twinning to report.	Xtrriage
F_o, F_c correlation	0.97	EDS
Total number of atoms	8077	wwPDB-VP
Average B, all atoms (Å ²)	21.0	wwPDB-VP

Xtrriage's analysis on translational NCS is as follows: *The largest off-origin peak in the Patterson function is 4.10% of the height of the origin peak. No significant pseudotranslation is detected.*

¹Intensities estimated from amplitudes.

²Theoretical values of $\langle |L| \rangle$, $\langle L^2 \rangle$ for acentric reflections are 0.5, 0.333 respectively for untwinned datasets, and 0.375, 0.2 for perfectly twinned datasets.

5 Model quality [i](#)

5.1 Standard geometry [i](#)

Bond lengths and bond angles in the following residue types are not validated in this section: CL, MPD, NA

The Z score for a bond length (or angle) is the number of standard deviations the observed value is removed from the expected value. A bond length (or angle) with $|Z| > 5$ is considered an outlier worth inspection. RMSZ is the root-mean-square of all Z scores of the bond lengths (or angles).

Mol	Chain	Bond lengths		Bond angles	
		RMSZ	# Z >5	RMSZ	# Z >5
1	AA	0.77	0/1740	0.82	0/2351
1	BA	0.75	0/1755	0.84	0/2371
2	PA	0.83	0/34	0.52	0/44
2	PB	0.60	0/44	0.66	0/56
All	All	0.76	0/3573	0.83	0/4822

There are no bond length outliers.

There are no bond angle outliers.

There are no chirality outliers.

There are no planarity outliers.

5.2 Too-close contacts [i](#)

In the following table, the Non-H and H(model) columns list the number of non-hydrogen atoms and hydrogen atoms in the chain respectively. The H(added) column lists the number of hydrogen atoms added and optimized by MolProbity. The Clashes column lists the number of clashes within the asymmetric unit, whereas Symm-Clashes lists symmetry-related clashes.

Mol	Chain	Non-H	H(model)	H(added)	Clashes	Symm-Clashes
1	AA	1698	1627	1626	10	0
1	BA	1713	1638	1633	22	0
2	PA	35	37	37	0	0
2	PB	45	45	45	1	0
3	AA	2	0	0	0	0
3	BA	1	0	0	1	0
4	AA	24	0	42	5	0
4	BA	8	0	14	3	0
5	BA	1	0	0	0	0

Continued on next page...

Continued from previous page...

Mol	Chain	Non-H	H(model)	H(added)	Clashes	Symm-Clashes
6	AA	207	414	0	4	1
6	BA	184	368	0	4	1
6	PA	2	4	0	0	0
6	PB	8	16	0	0	0
All	All	3928	4149	3397	39	1

The all-atom clashscore is defined as the number of clashes found per 1000 atoms (including hydrogen atoms). The all-atom clashscore for this structure is 6.

The worst 5 of 39 close contacts within the same asymmetric unit are listed below, sorted by their clash magnitude.

Atom-1	Atom-2	Interatomic distance (Å)	Clash overlap (Å)
4:AA:304:MPD:HM2	4:AA:304:MPD:H52	1.33	1.07
1:BA:290:GLY:O	4:BA:503:MPD:H13	1.76	0.84
4:AA:304:MPD:HM2	4:AA:304:MPD:C5	2.14	0.76
1:BA:317[B]:ASP:OD1	6:BA:601:HOH:O	2.02	0.76
4:AA:304:MPD:H52	4:AA:304:MPD:CM	2.16	0.74

All (1) symmetry-related close contacts are listed below. The label for Atom-2 includes the symmetry operator and encoded unit-cell translations to be applied.

Atom-1	Atom-2	Interatomic distance (Å)	Clash overlap (Å)
6:AA:533:HOH:O	6:BA:675:HOH:O[3_554]	2.06	0.14

5.3 Torsion angles [i](#)

5.3.1 Protein backbone [i](#)

In the following table, the Percentiles column shows the percent Ramachandran outliers of the chain as a percentile score with respect to all X-ray entries followed by that with respect to entries of similar resolution.

The Analysed column shows the number of residues for which the backbone conformation was analysed, and the total number of residues.

Mol	Chain	Analysed	Favoured	Allowed	Outliers	Percentiles
1	AA	220/222 (99%)	216 (98%)	4 (2%)	0	100 100
1	BA	222/222 (100%)	216 (97%)	6 (3%)	0	100 100

Continued on next page...

Continued from previous page...

Mol	Chain	Analysed	Favoured	Allowed	Outliers	Percentiles	
2	PA	3/6 (50%)	3 (100%)	0	0	100	100
2	PB	4/6 (67%)	4 (100%)	0	0	100	100
All	All	449/456 (98%)	439 (98%)	10 (2%)	0	100	100

There are no Ramachandran outliers to report.

5.3.2 Protein sidechains [i](#)

In the following table, the Percentiles column shows the percent sidechain outliers of the chain as a percentile score with respect to all X-ray entries followed by that with respect to entries of similar resolution.

The Analysed column shows the number of residues for which the sidechain conformation was analysed, and the total number of residues.

Mol	Chain	Analysed	Rotameric	Outliers	Percentiles	
1	AA	180/180 (100%)	176 (98%)	4 (2%)	52	27
1	BA	182/180 (101%)	177 (97%)	5 (3%)	44	20
2	PA	3/4 (75%)	3 (100%)	0	100	100
2	PB	4/4 (100%)	4 (100%)	0	100	100
All	All	369/368 (100%)	360 (98%)	9 (2%)	52	24

5 of 9 residues with a non-rotameric sidechain are listed below:

Mol	Chain	Res	Type
1	BA	311	TYR
1	BA	379	CYS
1	AA	175	GLU
1	BA	223	LEU
1	BA	243[A]	GLN

Sometimes sidechains can be flipped to improve hydrogen bonding and reduce clashes. All (3) such sidechains are listed below:

Mol	Chain	Res	Type
1	BA	274	ASN
1	BA	401	GLN
2	PB	454	GLN

5.3.3 RNA [i](#)

There are no RNA molecules in this entry.

5.4 Non-standard residues in protein, DNA, RNA chains [i](#)

There are no non-standard protein/DNA/RNA residues in this entry.

5.5 Carbohydrates [i](#)

There are no monosaccharides in this entry.

5.6 Ligand geometry [i](#)

Of 8 ligands modelled in this entry, 4 are monoatomic - leaving 4 for Mogul analysis.

In the following table, the Counts columns list the number of bonds (or angles) for which Mogul statistics could be retrieved, the number of bonds (or angles) that are observed in the model and the number of bonds (or angles) that are defined in the Chemical Component Dictionary. The Link column lists molecule types, if any, to which the group is linked. The Z score for a bond length (or angle) is the number of standard deviations the observed value is removed from the expected value. A bond length (or angle) with $|Z| > 2$ is considered an outlier worth inspection. RMSZ is the root-mean-square of all Z scores of the bond lengths (or angles).

Mol	Type	Chain	Res	Link	Bond lengths			Bond angles		
					Counts	RMSZ	$\# Z > 2$	Counts	RMSZ	$\# Z > 2$
4	MPD	BA	503	-	7,7,7	0.71	0	9,10,10	0.89	0
4	MPD	AA	303	-	7,7,7	0.46	0	9,10,10	0.65	0
4	MPD	AA	304	-	7,7,7	0.63	0	9,10,10	0.64	0
4	MPD	AA	302	-	7,7,7	0.30	0	9,10,10	0.21	0

In the following table, the Chirals column lists the number of chiral outliers, the number of chiral centers analysed, the number of these observed in the model and the number defined in the Chemical Component Dictionary. Similar counts are reported in the Torsion and Rings columns. '-' means no outliers of that kind were identified.

Mol	Type	Chain	Res	Link	Chirals	Torsions	Rings
4	MPD	BA	503	-	-	1/5/5/5	-
4	MPD	AA	303	-	-	2/5/5/5	-
4	MPD	AA	304	-	-	1/5/5/5	-
4	MPD	AA	302	-	-	0/5/5/5	-

There are no bond length outliers.

There are no bond angle outliers.

There are no chirality outliers.

All (4) torsion outliers are listed below:

Mol	Chain	Res	Type	Atoms
4	BA	503	MPD	C2-C3-C4-C5
4	AA	303	MPD	O2-C2-C3-C4
4	AA	303	MPD	CM-C2-C3-C4
4	AA	304	MPD	C2-C3-C4-C5

There are no ring outliers.

3 monomers are involved in 8 short contacts:

Mol	Chain	Res	Type	Clashes	Symm-Clashes
4	BA	503	MPD	3	0
4	AA	304	MPD	4	0
4	AA	302	MPD	1	0

5.7 Other polymers [i](#)

There are no such residues in this entry.

5.8 Polymer linkage issues [i](#)

There are no chain breaks in this entry.

6 Fit of model and data [i](#)

6.1 Protein, DNA and RNA chains [i](#)

In the following table, the column labelled ‘#RSRZ> 2’ contains the number (and percentage) of RSRZ outliers, followed by percent RSRZ outliers for the chain as percentile scores relative to all X-ray entries and entries of similar resolution. The OWAB column contains the minimum, median, 95th percentile and maximum values of the occupancy-weighted average B-factor per residue. The column labelled ‘Q< 0.9’ lists the number of (and percentage) of residues with an average occupancy less than 0.9.

Mol	Chain	Analysed	<RSRZ>	#RSRZ>2	OWAB(Å ²)	Q<0.9
1	AA	222/222 (100%)	-0.55	0 100 100	10, 16, 31, 45	4 (1%)
1	BA	221/222 (99%)	-0.20	8 (3%) 42 40	13, 20, 42, 78	1 (0%)
2	PA	5/6 (83%)	0.85	1 (20%) 1 1	17, 21, 59, 80	0
2	PB	6/6 (100%)	-0.44	0 100 100	15, 18, 24, 24	0
All	All	454/456 (99%)	-0.37	9 (1%) 65 64	10, 18, 37, 80	5 (1%)

The worst 5 of 9 RSRZ outliers are listed below:

Mol	Chain	Res	Type	RSRZ
1	BA	398	ALA	5.1
1	BA	399	ASN	4.2
2	PA	448	LYS	3.7
1	BA	402	ASN	3.5
1	BA	401	GLN	3.3

6.2 Non-standard residues in protein, DNA, RNA chains [i](#)

There are no non-standard protein/DNA/RNA residues in this entry.

6.3 Carbohydrates [i](#)

There are no monosaccharides in this entry.

6.4 Ligands [i](#)

In the following table, the Atoms column lists the number of modelled atoms in the group and the number defined in the chemical component dictionary. The B-factors column lists the minimum, median, 95th percentile and maximum values of B factors of atoms in the group. The column labelled ‘Q< 0.9’ lists the number of atoms with occupancy less than 0.9.

Mol	Type	Chain	Res	Atoms	RSCC	RSR	B-factors(\AA^2)	Q<0.9
5	NA	BA	502	1/1	0.66	0.23	69,69,69,69	0
4	MPD	AA	303	8/8	0.81	0.15	43,47,62,68	0
4	MPD	AA	304	8/8	0.84	0.23	62,64,67,68	0
4	MPD	AA	302	8/8	0.84	0.15	35,40,46,46	0
4	MPD	BA	503	8/8	0.87	0.22	40,48,57,60	0
3	CL	BA	501	1/1	0.96	0.06	21,21,21,21	0
3	CL	AA	301	1/1	0.99	0.05	18,18,18,18	0
3	CL	AA	305	1/1	0.99	0.04	24,24,24,24	0

6.5 Other polymers [i](#)

There are no such residues in this entry.