



# Full wwPDB X-ray Structure Validation Report ⓘ

May 21, 2020 – 09:40 am BST

PDB ID : 6QAT  
Title : Crystal structure of ULK2 in complexed with hesperadin  
Authors : Chaikuad, A.; Arrowsmith, C.H.; Edwards, A.M.; Bountra, C.; Knapp, S.;  
Structural Genomics Consortium; Structural Genomics Consortium (SGC)  
Deposited on : 2018-12-19  
Resolution : 2.77 Å(reported)

This is a Full wwPDB X-ray Structure Validation Report for a publicly released PDB entry.

We welcome your comments at [validation@mail.wwpdb.org](mailto:validation@mail.wwpdb.org)

A user guide is available at

<https://www.wwpdb.org/validation/2017/XrayValidationReportHelp>

with specific help available everywhere you see the ⓘ symbol.

---

The following versions of software and data (see [references ⓘ](#)) were used in the production of this report:

MolProbity : 4.02b-467  
Mogul : 1.8.5 (274361), CSD as541be (2020)  
Xtriage (Phenix) : 1.13  
EDS : 2.11  
buster-report : 1.1.7 (2018)  
Percentile statistics : 20191225.v01 (using entries in the PDB archive December 25th 2019)  
Refmac : 5.8.0158  
CCP4 : 7.0.044 (Gargrove)  
Ideal geometry (proteins) : Engh & Huber (2001)  
Ideal geometry (DNA, RNA) : Parkinson et al. (1996)  
Validation Pipeline (wwPDB-VP) : 2.11

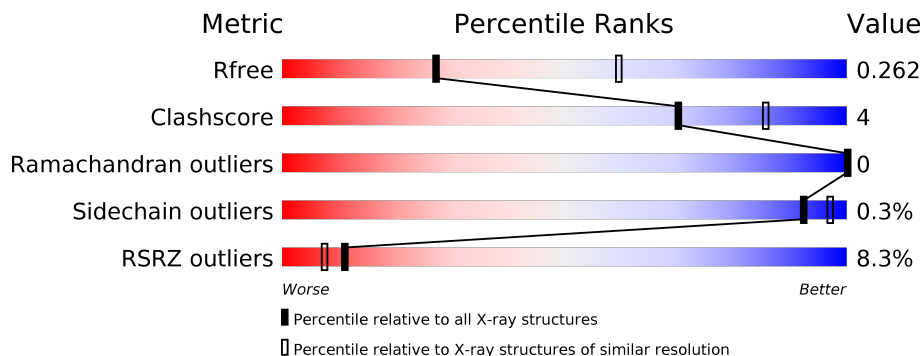
# 1 Overall quality at a glance

The following experimental techniques were used to determine the structure:

*X-RAY DIFFRACTION*

The reported resolution of this entry is 2.77 Å.

Percentile scores (ranging between 0-100) for global validation metrics of the entry are shown in the following graphic. The table shows the number of entries on which the scores are based.



Metric	Whole archive (#Entries)	Similar resolution (#Entries, resolution range(Å))
$R_{free}$	130704	4107 (2.80-2.76)
Clashscore	141614	4575 (2.80-2.76)
Ramachandran outliers	138981	4487 (2.80-2.76)
Sidechain outliers	138945	4489 (2.80-2.76)
RSRZ outliers	127900	4027 (2.80-2.76)

The table below summarises the geometric issues observed across the polymeric chains and their fit to the electron density. The red, orange, yellow and green segments on the lower bar indicate the fraction of residues that contain outliers for  $\geq 3$ , 2, 1 and 0 types of geometric quality criteria respectively. A grey segment represents the fraction of residues that are not modelled. The numeric value for each fraction is indicated below the corresponding segment, with a dot representing fractions  $\leq 5\%$ . The upper red bar (where present) indicates the fraction of residues that have poor fit to the electron density. The numeric value is given above the bar.

Mol	Chain	Length	Quality of chain
1	A	280	
1	B	280	
1	C	280	
1	D	280	

## 2 Entry composition i

There are 3 unique types of molecules in this entry. The entry contains 8307 atoms, of which 0 are hydrogens and 0 are deuteriums.

In the tables below, the ZeroOcc column contains the number of atoms modelled with zero occupancy, the AltConf column contains the number of residues with at least one atom in alternate conformation and the Trace column contains the number of residues modelled with at most 2 atoms.

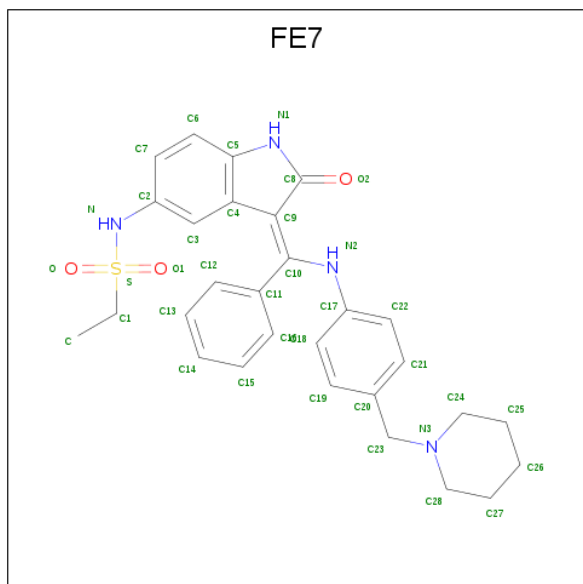
- Molecule 1 is a protein called Serine/threonine-protein kinase ULK2.

Mol	Chain	Residues	Atoms					ZeroOcc	AltConf	Trace
			Total	C	N	O	S			
1	A	259	2086	1341	362	372	11	0	0	0
1	B	245	1947	1254	337	347	9	0	0	0
1	C	257	2073	1334	360	368	11	0	0	0
1	D	252	2035	1311	352	361	11	0	0	0

There are 20 discrepancies between the modelled and reference sequences:

Chain	Residue	Modelled	Actual	Comment	Reference
A	-3	GLY	-	expression tag	UNP Q8IYT8
A	-2	GLY	-	expression tag	UNP Q8IYT8
A	-1	GLY	-	expression tag	UNP Q8IYT8
A	0	SER	-	expression tag	UNP Q8IYT8
A	173	ASP	THR	conflict	UNP Q8IYT8
B	-3	GLY	-	expression tag	UNP Q8IYT8
B	-2	GLY	-	expression tag	UNP Q8IYT8
B	-1	GLY	-	expression tag	UNP Q8IYT8
B	0	SER	-	expression tag	UNP Q8IYT8
B	173	ASP	THR	conflict	UNP Q8IYT8
C	-3	GLY	-	expression tag	UNP Q8IYT8
C	-2	GLY	-	expression tag	UNP Q8IYT8
C	-1	GLY	-	expression tag	UNP Q8IYT8
C	0	SER	-	expression tag	UNP Q8IYT8
C	173	ASP	THR	conflict	UNP Q8IYT8
D	-3	GLY	-	expression tag	UNP Q8IYT8
D	-2	GLY	-	expression tag	UNP Q8IYT8
D	-1	GLY	-	expression tag	UNP Q8IYT8
D	0	SER	-	expression tag	UNP Q8IYT8
D	173	ASP	THR	conflict	UNP Q8IYT8

- Molecule 2 is N-[(3Z)-2-oxo-3-phenyl-4-[(piperidin-1-yl)methyl]phenylamino)methylidene]-2,3-dihydro-1H-indol-5-yl]ethanesulfonamide (three-letter code: FE7) (formula: C<sub>29</sub>H<sub>32</sub>N<sub>4</sub>O<sub>3</sub>S).

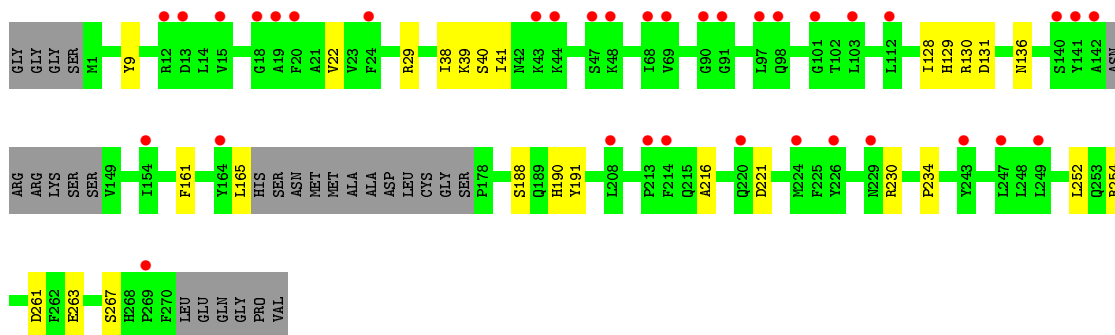


Mol	Chain	Residues	Atoms					ZeroOcc	AltConf
2	A	1	Total	C	N	O	S	0	0
			37	29	4	3	1		
2	B	1	Total	C	N	O	S	0	0
			37	29	4	3	1		
2	C	1	Total	C	N	O	S	0	0
			37	29	4	3	1		
2	D	1	Total	C	N	O	S	0	0
			37	29	4	3	1		

- Molecule 3 is water.

Mol	Chain	Residues	Atoms		ZeroOcc	AltConf
3	A	10	Total	O	0	0
			10	10		
3	B	6	Total	O	0	0
			6	6		
3	C	1	Total	O	0	0
			1	1		
3	D	1	Total	O	0	0
			1	1		





## 4 Data and refinement statistics

Property	Value	Source
Space group	P 1 21 1	Depositor
Cell constants a, b, c, $\alpha$ , $\beta$ , $\gamma$	75.21Å 77.56Å 94.94Å 90.00° 97.77° 90.00°	Depositor
Resolution (Å)	48.75 – 2.77 48.75 – 2.77	Depositor EDS
% Data completeness (in resolution range)	99.0 (48.75-2.77) 99.1 (48.75-2.77)	Depositor EDS
$R_{merge}$	0.07	Depositor
$R_{sym}$	(Not available)	Depositor
$\langle I/\sigma(I) \rangle$ <sup>1</sup>	1.93 (at 2.77Å)	Xtrriage
Refinement program	REFMAC 5.8.0232	Depositor
R, $R_{free}$	0.218 , 0.262 0.220 , 0.262	Depositor DCC
$R_{free}$ test set	1357 reflections (4.94%)	wwPDB-VP
Wilson B-factor (Å <sup>2</sup> )	86.9	Xtrriage
Anisotropy	0.308	Xtrriage
Bulk solvent $k_{sol}$ (e/Å <sup>3</sup> ), $B_{sol}$ (Å <sup>2</sup> )	0.33 , 67.0	EDS
L-test for twinning <sup>2</sup>	$\langle  L  \rangle = 0.50$ , $\langle L^2 \rangle = 0.34$	Xtrriage
Estimated twinning fraction	No twinning to report.	Xtrriage
$F_o, F_c$ correlation	0.95	EDS
Total number of atoms	8307	wwPDB-VP
Average B, all atoms (Å <sup>2</sup> )	108.0	wwPDB-VP

Xtrriage's analysis on translational NCS is as follows: *The largest off-origin peak in the Patterson function is 5.37% of the height of the origin peak. No significant pseudotranslation is detected.*

<sup>1</sup>Intensities estimated from amplitudes.

<sup>2</sup>Theoretical values of  $\langle |L| \rangle$ ,  $\langle L^2 \rangle$  for acentric reflections are 0.5, 0.333 respectively for untwinned datasets, and 0.375, 0.2 for perfectly twinned datasets.

## 5 Model quality [i](#)

### 5.1 Standard geometry [i](#)

Bond lengths and bond angles in the following residue types are not validated in this section: FE7

The Z score for a bond length (or angle) is the number of standard deviations the observed value is removed from the expected value. A bond length (or angle) with  $|Z| > 5$  is considered an outlier worth inspection. RMSZ is the root-mean-square of all Z scores of the bond lengths (or angles).

Mol	Chain	Bond lengths		Bond angles	
		RMSZ	# Z  >5	RMSZ	# Z  >5
1	A	0.71	0/2131	0.68	0/2870
1	B	0.71	0/1988	0.68	0/2677
1	C	0.65	0/2118	0.66	0/2853
1	D	0.67	0/2079	0.67	0/2800
All	All	0.68	0/8316	0.67	0/11200

There are no bond length outliers.

There are no bond angle outliers.

There are no chirality outliers.

There are no planarity outliers.

### 5.2 Too-close contacts [i](#)

In the following table, the Non-H and H(model) columns list the number of non-hydrogen atoms and hydrogen atoms in the chain respectively. The H(added) column lists the number of hydrogen atoms added and optimized by MolProbity. The Clashes column lists the number of clashes within the asymmetric unit, whereas Symm-Clashes lists symmetry related clashes.

Mol	Chain	Non-H	H(model)	H(added)	Clashes	Symm-Clashes
1	A	2086	0	2103	19	2
1	B	1947	0	1958	12	1
1	C	2073	0	2085	10	0
1	D	2035	0	2061	14	1
2	A	37	0	0	4	0
2	B	37	0	0	2	0
2	C	37	0	0	1	0
2	D	37	0	0	1	0
3	A	10	0	0	0	0

*Continued on next page...*



*Continued from previous page...*

Mol	Chain	Non-H	H(model)	H(added)	Clashes	Symm-Clashes
3	B	6	0	0	0	0
3	C	1	0	0	0	0
3	D	1	0	0	0	0
All	All	8307	0	8207	59	2

The all-atom clashscore is defined as the number of clashes found per 1000 atoms (including hydrogen atoms). The all-atom clashscore for this structure is 4.

All (59) close contacts within the same asymmetric unit are listed below, sorted by their clash magnitude.

Atom-1	Atom-2	Interatomic distance (Å)	Clash overlap (Å)
2:A:301:FE7:C11	2:A:301:FE7:C22	2.73	0.66
1:B:20:PHE:CD1	1:B:45:ASN:HB3	2.34	0.62
2:D:301:FE7:C22	2:D:301:FE7:C11	2.78	0.61
2:B:301:FE7:C22	2:B:301:FE7:C11	2.78	0.61
1:D:230:ARG:HG2	1:D:254:ARG:CZ	2.30	0.60
1:C:230:ARG:HG2	1:C:254:ARG:CZ	2.33	0.58
1:B:128:ILE:HD11	1:B:165:LEU:HD21	1.87	0.56
1:B:131:ASP:O	1:B:136:ASN:ND2	2.39	0.55
2:C:301:FE7:C11	2:C:301:FE7:C22	2.84	0.55
1:C:131:ASP:O	1:C:136:ASN:ND2	2.40	0.55
1:A:128:ILE:HD11	1:A:165:LEU:HD21	1.88	0.54
1:C:128:ILE:HD11	1:C:165:LEU:HD21	1.89	0.54
1:D:131:ASP:O	1:D:136:ASN:ND2	2.42	0.53
1:D:128:ILE:HD11	1:D:165:LEU:HD21	1.89	0.53
1:A:232:LEU:HD13	1:B:269:PRO:HG2	1.91	0.53
1:A:131:ASP:O	1:A:136:ASN:ND2	2.43	0.51
1:A:17:HIS:ND1	1:C:215:GLN:NE2	2.60	0.50
1:D:216:ALA:HB1	1:D:221:ASP:CB	2.42	0.49
1:D:128:ILE:HG22	1:D:130:ARG:HG2	1.95	0.48
1:B:205:TYR:CE2	1:B:213:PRO:HA	2.48	0.48
1:D:39:LYS:HE2	1:D:41:ILE:HD11	1.95	0.48
1:A:14:LEU:CD1	1:A:22:VAL:CG1	2.91	0.48
1:A:128:ILE:HG22	1:A:130:ARG:HG2	1.95	0.48
1:C:216:ALA:HB1	1:C:221:ASP:HB3	1.96	0.47
1:D:216:ALA:HB1	1:D:221:ASP:HB3	1.95	0.47
1:A:188:SER:O	1:A:191:TYR:HD1	1.97	0.47
2:B:301:FE7:C12	2:B:301:FE7:C3	2.93	0.47
1:A:216:ALA:HB1	1:A:221:ASP:CB	2.45	0.46
1:A:216:ALA:HB1	1:A:221:ASP:HB3	1.96	0.46
1:B:188:SER:O	1:B:191:TYR:HD1	1.98	0.46

*Continued on next page...*

Continued from previous page...

Atom-1	Atom-2	Interatomic distance (Å)	Clash overlap (Å)
1:C:216:ALA:HB1	1:C:221:ASP:CB	2.45	0.46
1:B:263:GLU:O	1:B:267:SER:OG	2.31	0.46
1:C:128:ILE:HG22	1:C:130:ARG:HG2	1.99	0.45
1:C:188:SER:O	1:C:191:TYR:HD1	1.98	0.45
1:C:234:PRO:HG3	1:C:252:LEU:HD13	1.99	0.45
1:A:238:ARG:HH21	1:B:263:GLU:HB3	1.82	0.44
1:A:14:LEU:HD13	1:A:22:VAL:CG1	2.47	0.44
2:A:301:FE7:C12	2:A:301:FE7:C3	2.97	0.43
1:D:234:PRO:HG3	1:D:252:LEU:HD13	2.00	0.43
1:A:9:TYR:HB3	1:A:38:ILE:HD12	2.01	0.42
1:D:9:TYR:HB3	1:D:38:ILE:HD12	2.01	0.42
2:A:301:FE7:C11	2:A:301:FE7:C3	2.98	0.42
1:D:22:VAL:HG23	1:D:40:SER:HB3	2.01	0.42
1:A:129:HIS:O	1:A:130:ARG:HB2	2.20	0.42
1:A:14:LEU:CD1	1:A:22:VAL:HG12	2.48	0.42
1:D:129:HIS:O	1:D:130:ARG:HB2	2.20	0.42
1:B:128:ILE:HG22	1:B:130:ARG:HG2	2.01	0.41
1:A:39:LYS:NZ	2:A:301:FE7:O	2.44	0.41
1:A:261:ASP:C	1:A:261:ASP:OD1	2.59	0.41
1:D:188:SER:O	1:D:191:TYR:HD1	2.03	0.41
1:D:263:GLU:O	1:D:267:SER:OG	2.31	0.41
1:C:43:LYS:HE3	1:C:76:GLU:OE2	2.21	0.41
1:B:261:ASP:OD1	1:B:261:ASP:C	2.59	0.41
1:A:223:ARG:O	1:A:227:GLU:HB2	2.20	0.40
1:B:268:HIS:ND1	1:B:269:PRO:HD2	2.36	0.40
1:A:128:ILE:O	1:A:162:ALA:HA	2.22	0.40
1:A:268:HIS:ND1	1:A:269:PRO:HD2	2.37	0.40
1:D:261:ASP:OD1	1:D:261:ASP:C	2.60	0.40
1:B:9:TYR:HB3	1:B:38:ILE:HD12	2.04	0.40

All (2) symmetry-related close contacts are listed below. The label for Atom-2 includes the symmetry operator and encoded unit-cell translations to be applied.

Atom-1	Atom-2	Interatomic distance (Å)	Clash overlap (Å)
1:A:180:TYR:OH	1:B:206:GLN:OE1[2_454]	2.13	0.07
1:A:1:MET:O	1:D:29:ARG:NH2[1_554]	2.18	0.02

## 5.3 Torsion angles [i](#)

### 5.3.1 Protein backbone [i](#)

In the following table, the Percentiles column shows the percent Ramachandran outliers of the chain as a percentile score with respect to all X-ray entries followed by that with respect to entries of similar resolution.

The Analysed column shows the number of residues for which the backbone conformation was analysed, and the total number of residues.

Mol	Chain	Analysed	Favoured	Allowed	Outliers	Percentiles	
1	A	253/280 (90%)	241 (95%)	12 (5%)	0	100	100
1	B	237/280 (85%)	226 (95%)	11 (5%)	0	100	100
1	C	251/280 (90%)	241 (96%)	10 (4%)	0	100	100
1	D	246/280 (88%)	235 (96%)	11 (4%)	0	100	100
All	All	987/1120 (88%)	943 (96%)	44 (4%)	0	100	100

There are no Ramachandran outliers to report.

### 5.3.2 Protein sidechains [i](#)

In the following table, the Percentiles column shows the percent sidechain outliers of the chain as a percentile score with respect to all X-ray entries followed by that with respect to entries of similar resolution.

The Analysed column shows the number of residues for which the sidechain conformation was analysed, and the total number of residues.

Mol	Chain	Analysed	Rotameric	Outliers	Percentiles	
1	A	225/241 (93%)	225 (100%)	0	100	100
1	B	207/241 (86%)	207 (100%)	0	100	100
1	C	222/241 (92%)	221 (100%)	1 (0%)	88	95
1	D	220/241 (91%)	218 (99%)	2 (1%)	78	92
All	All	874/964 (91%)	871 (100%)	3 (0%)	92	97

All (3) residues with a non-rotameric sidechain are listed below:

Mol	Chain	Res	Type
1	C	228	LYS
1	D	161	PHE
1	D	190	HIS

Some sidechains can be flipped to improve hydrogen bonding and reduce clashes. There are no such sidechains identified.

### 5.3.3 RNA [i](#)

There are no RNA molecules in this entry.

## 5.4 Non-standard residues in protein, DNA, RNA chains [i](#)

There are no non-standard protein/DNA/RNA residues in this entry.

## 5.5 Carbohydrates [i](#)

There are no carbohydrates in this entry.

## 5.6 Ligand geometry [i](#)

4 ligands are modelled in this entry.

In the following table, the Counts columns list the number of bonds (or angles) for which Mogul statistics could be retrieved, the number of bonds (or angles) that are observed in the model and the number of bonds (or angles) that are defined in the Chemical Component Dictionary. The Link column lists molecule types, if any, to which the group is linked. The Z score for a bond length (or angle) is the number of standard deviations the observed value is removed from the expected value. A bond length (or angle) with  $|Z| > 2$  is considered an outlier worth inspection. RMSZ is the root-mean-square of all Z scores of the bond lengths (or angles).

Mol	Type	Chain	Res	Link	Bond lengths			Bond angles		
					Counts	RMSZ	# Z  > 2	Counts	RMSZ	# Z  > 2
2	FE7	C	301	-	41,41,41	0.45	0	55,58,58	0.54	0
2	FE7	B	301	-	41,41,41	0.82	2 (4%)	55,58,58	0.78	4 (7%)
2	FE7	D	301	-	41,41,41	0.60	1 (2%)	55,58,58	0.67	2 (3%)
2	FE7	A	301	-	41,41,41	1.12	3 (7%)	55,58,58	0.80	4 (7%)

In the following table, the Chirals column lists the number of chiral outliers, the number of chiral centers analysed, the number of these observed in the model and the number defined in the Chemical Component Dictionary. Similar counts are reported in the Torsion and Rings columns. '-' means no outliers of that kind were identified.

Mol	Type	Chain	Res	Link	Chirals	Torsions	Rings
2	FE7	C	301	-	-	6/24/44/44	0/5/5/5
2	FE7	B	301	-	-	0/24/44/44	0/5/5/5

*Continued on next page...*

*Continued from previous page...*

Mol	Type	Chain	Res	Link	Chirals	Torsions	Rings
2	FE7	D	301	-	-	6/24/44/44	0/5/5/5
2	FE7	A	301	-	-	0/24/44/44	0/5/5/5

All (6) bond length outliers are listed below:

Mol	Chain	Res	Type	Atoms	Z	Observed(Å)	Ideal(Å)
2	A	301	FE7	S-N	-5.07	1.52	1.62
2	B	301	FE7	S-N	-3.43	1.55	1.62
2	A	301	FE7	C3-C4	-3.05	1.35	1.39
2	B	301	FE7	C3-C4	-2.24	1.36	1.39
2	A	301	FE7	C9-C8	-2.12	1.45	1.50
2	D	301	FE7	S-N	-2.11	1.58	1.62

All (10) bond angle outliers are listed below:

Mol	Chain	Res	Type	Atoms	Z	Observed(°)	Ideal(°)
2	A	301	FE7	C7-C2-N	2.93	126.43	120.09
2	A	301	FE7	C3-C2-N	-2.66	113.13	119.93
2	B	301	FE7	C7-C2-N	2.46	125.41	120.09
2	A	301	FE7	C4-C9-C10	-2.29	125.95	131.89
2	B	301	FE7	C3-C2-N	-2.19	114.32	119.93
2	B	301	FE7	C10-C9-C8	2.15	126.76	122.69
2	B	301	FE7	C4-C9-C10	-2.12	126.37	131.89
2	D	301	FE7	C7-C2-N	2.09	124.61	120.09
2	A	301	FE7	C10-C9-C8	2.04	126.56	122.69
2	D	301	FE7	C10-C9-C8	2.03	126.54	122.69

There are no chirality outliers.

All (12) torsion outliers are listed below:

Mol	Chain	Res	Type	Atoms
2	C	301	FE7	C-C1-S-N
2	C	301	FE7	C-C1-S-O
2	C	301	FE7	C-C1-S-O1
2	D	301	FE7	C-C1-S-N
2	D	301	FE7	C-C1-S-O
2	D	301	FE7	C-C1-S-O1
2	D	301	FE7	C20-C23-N3-C28
2	D	301	FE7	C20-C23-N3-C24
2	C	301	FE7	N2-C10-C9-C8
2	C	301	FE7	C2-N-S-O

*Continued on next page...*

*Continued from previous page...*

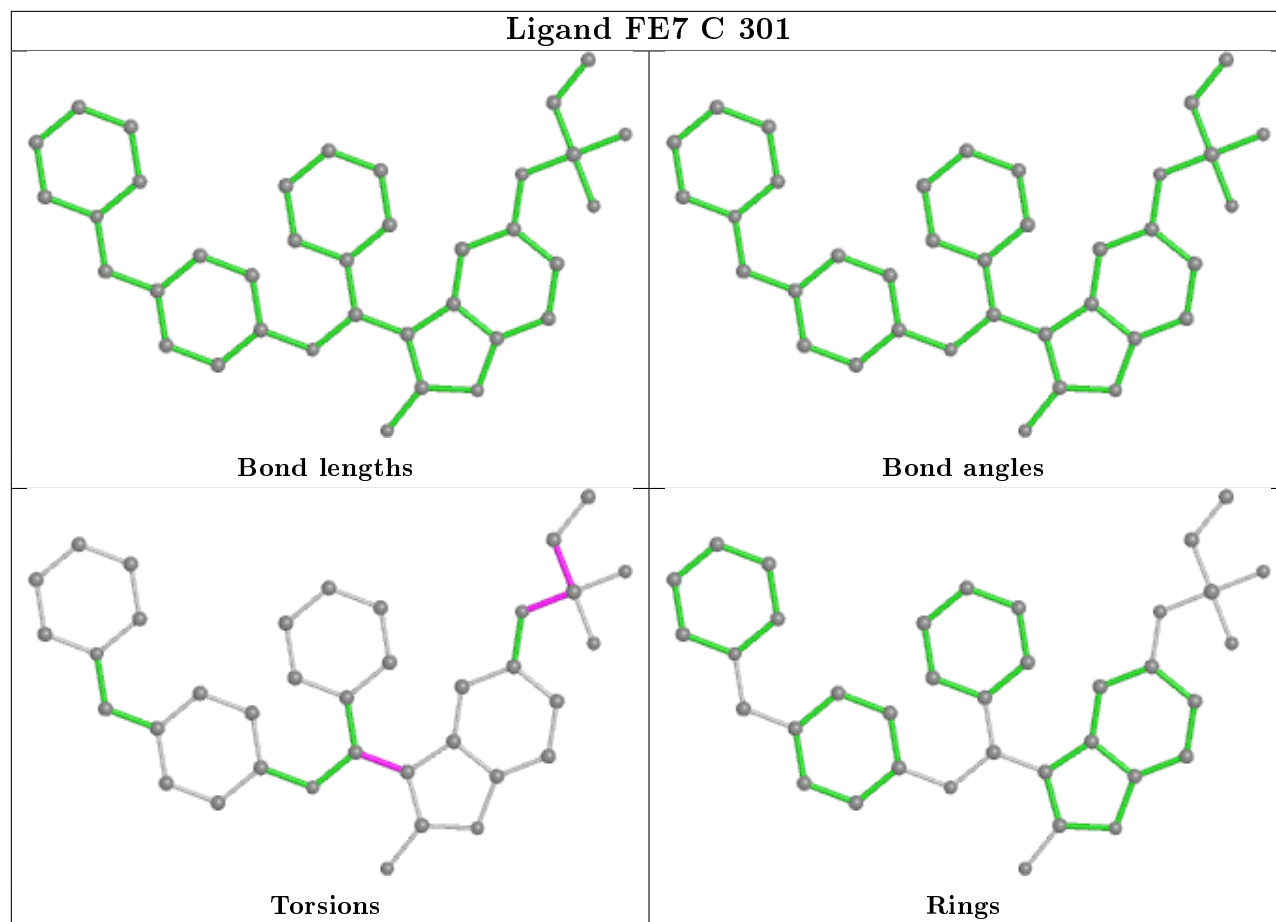
Mol	Chain	Res	Type	Atoms
2	C	301	FE7	C2-N-S-O1
2	D	301	FE7	C2-N-S-O1

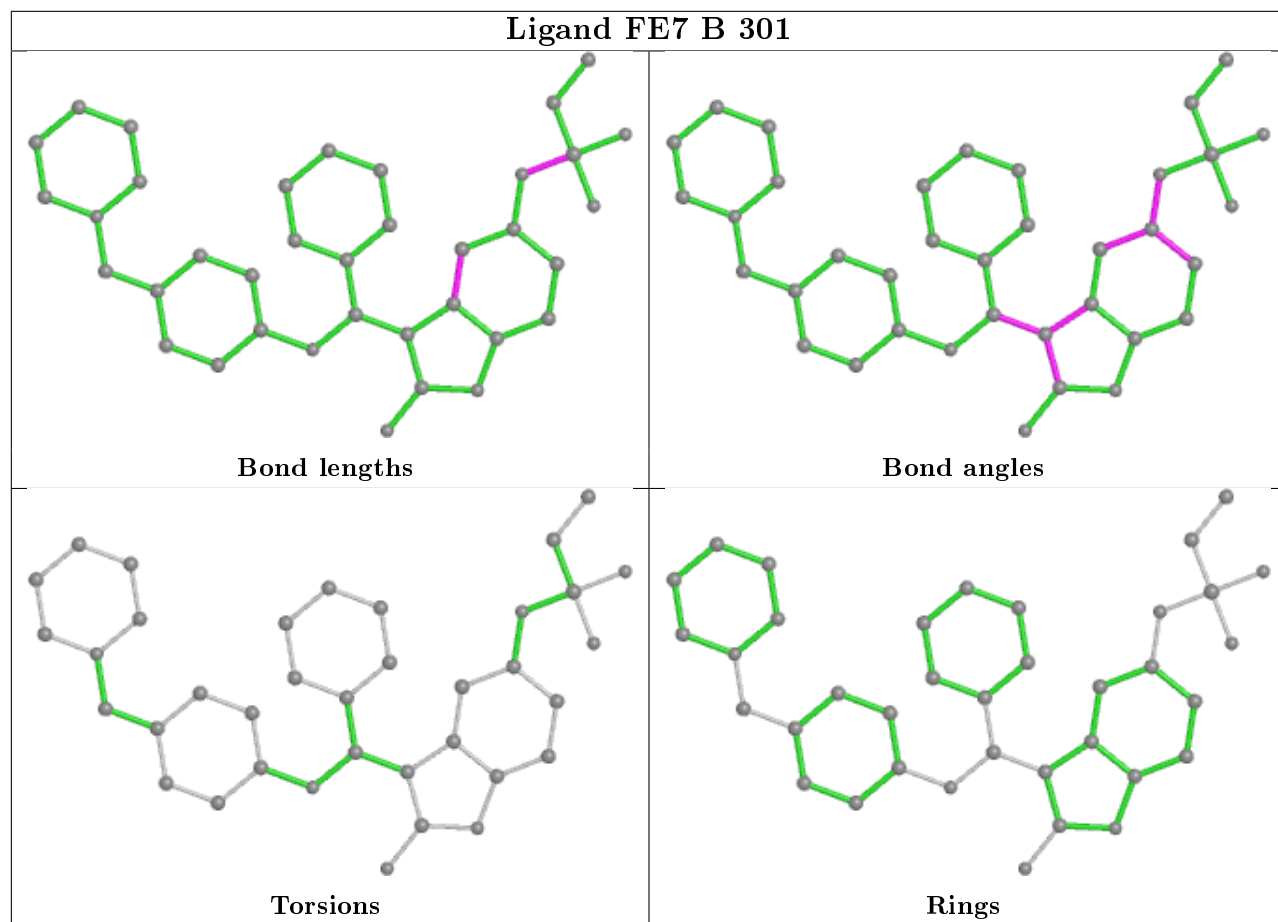
There are no ring outliers.

4 monomers are involved in 8 short contacts:

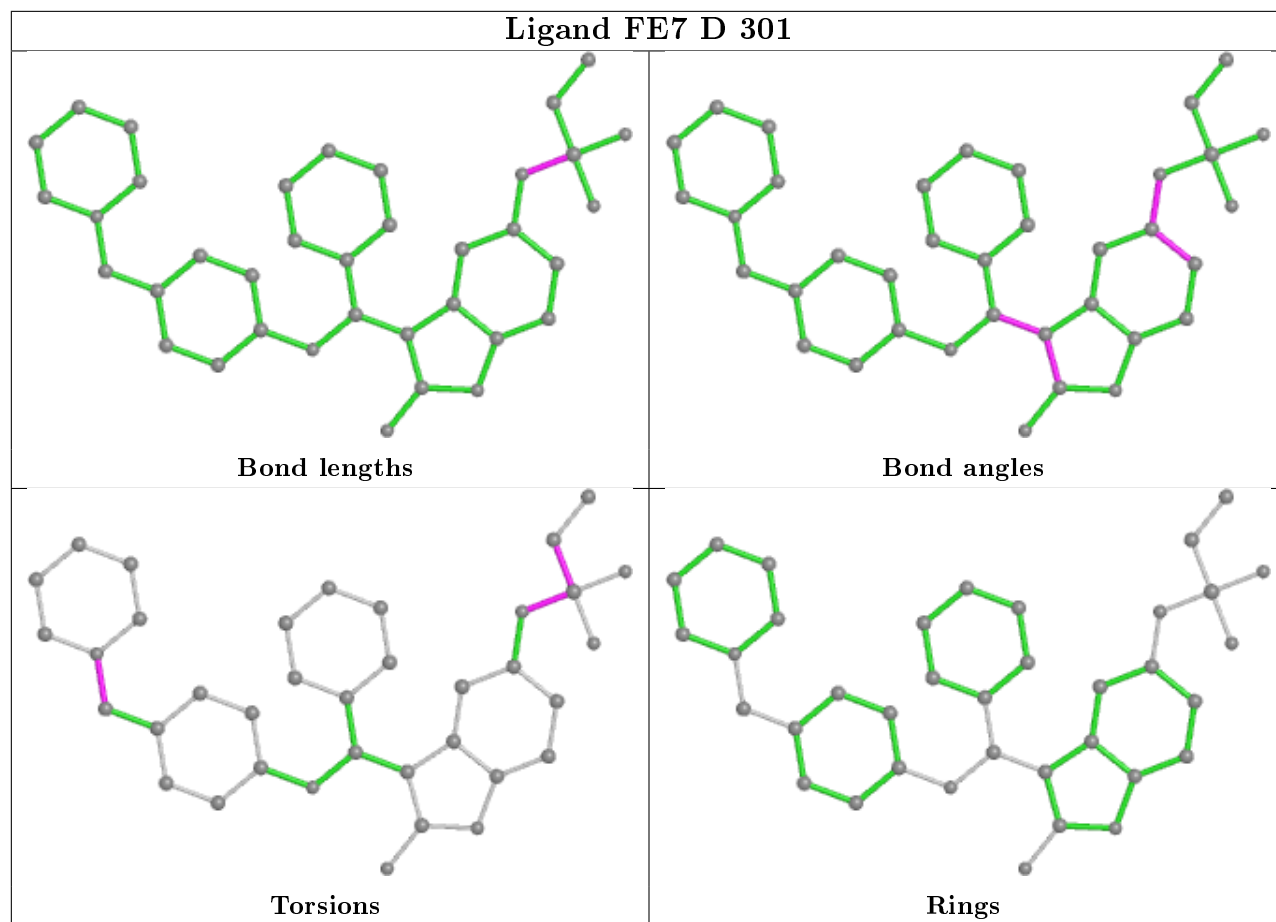
Mol	Chain	Res	Type	Clashes	Symm-Clashes
2	C	301	FE7	1	0
2	B	301	FE7	2	0
2	D	301	FE7	1	0
2	A	301	FE7	4	0

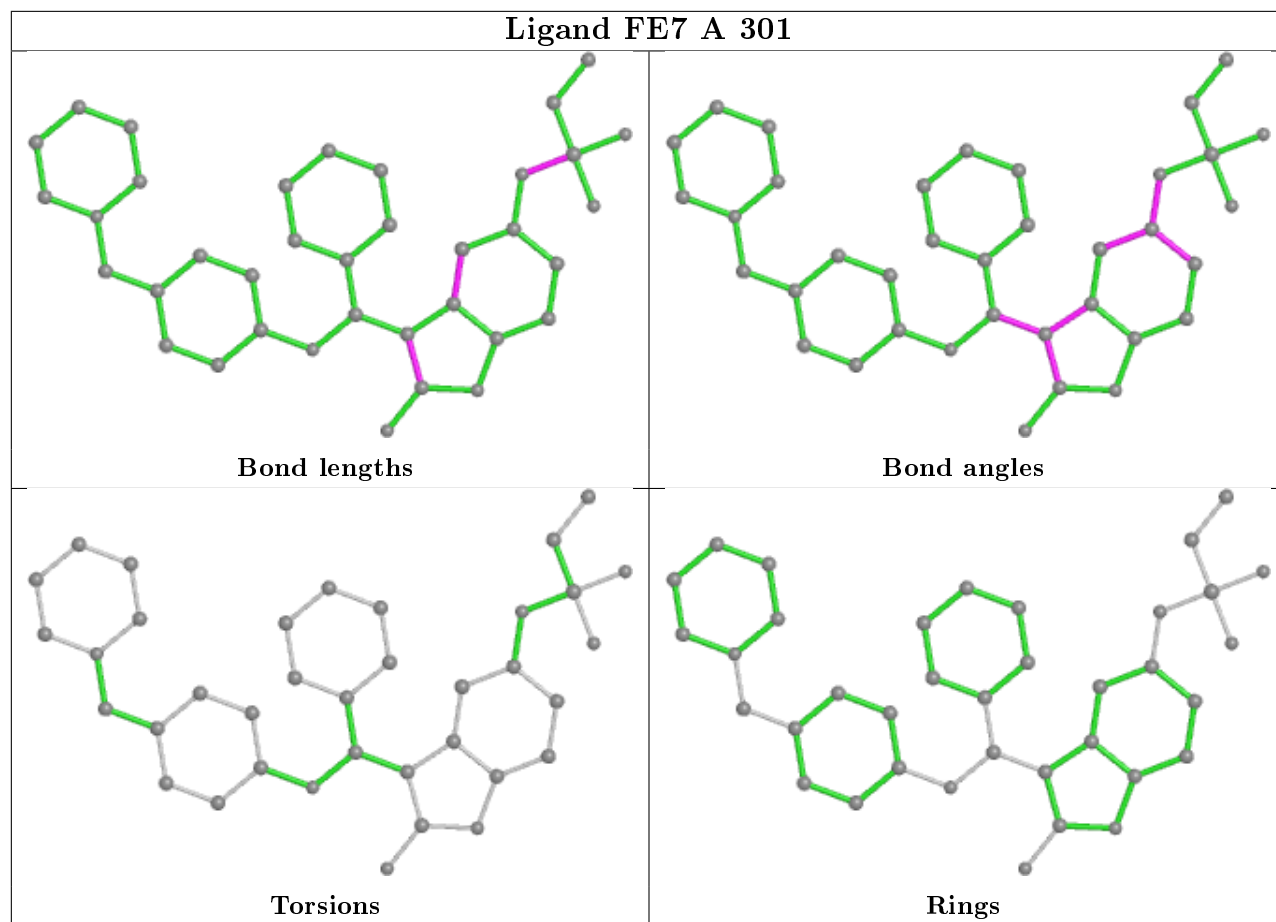
The following is a two-dimensional graphical depiction of Mogul quality analysis of bond lengths, bond angles, torsion angles, and ring geometry for all instances of the Ligand of Interest. In addition, ligands with molecular weight > 250 and outliers as shown on the validation Tables will also be included. For torsion angles, if less than 5% of the Mogul distribution of torsion angles is within 10 degrees of the torsion angle in question, then that torsion angle is considered an outlier. Any bond that is central to one or more torsion angles identified as an outlier by Mogul will be highlighted in the graph. For rings, the root-mean-square deviation (RMSD) between the ring in question and similar rings identified by Mogul is calculated over all ring torsion angles. If the average RMSD is greater than 60 degrees and the minimal RMSD between the ring in question and any Mogul-identified rings is also greater than 60 degrees, then that ring is considered an outlier. The outliers are highlighted in purple. The color gray indicates Mogul did not find sufficient equivalents in the CSD to analyse the geometry.











## 5.7 Other polymers [\(i\)](#)

There are no such residues in this entry.

## 5.8 Polymer linkage issues [\(i\)](#)

There are no chain breaks in this entry.

## 6 Fit of model and data

### 6.1 Protein, DNA and RNA chains

In the following table, the column labelled ‘#RSRZ> 2’ contains the number (and percentage) of RSRZ outliers, followed by percent RSRZ outliers for the chain as percentile scores relative to all X-ray entries and entries of similar resolution. The OWAB column contains the minimum, median, 95<sup>th</sup> percentile and maximum values of the occupancy-weighted average B-factor per residue. The column labelled ‘Q< 0.9’ lists the number of (and percentage) of residues with an average occupancy less than 0.9.

Mol	Chain	Analysed	<RSRZ>	#RSRZ>2	OWAB(Å <sup>2</sup> )	Q<0.9
1	A	259/280 (92%)	0.55	20 (7%) 13 9	52, 96, 164, 203	0
1	B	245/280 (87%)	0.40	11 (4%) 33 27	55, 93, 136, 164	0
1	C	257/280 (91%)	0.62	17 (6%) 18 13	85, 111, 152, 178	0
1	D	252/280 (90%)	0.89	36 (14%) 2 1	81, 117, 160, 182	0
All	All	1013/1120 (90%)	0.62	84 (8%) 11 7	52, 107, 156, 203	0

All (84) RSRZ outliers are listed below:

Mol	Chain	Res	Type	RSRZ
1	A	274	GLY	7.7
1	A	231	SER	6.3
1	D	141	TYR	5.5
1	C	141	TYR	5.2
1	D	249	LEU	4.9
1	D	103	LEU	4.8
1	A	222	LEU	4.7
1	D	164	TYR	4.4
1	B	214	PHE	4.2
1	B	143	ASN	4.0
1	A	230	ARG	3.9
1	A	271	LEU	3.9
1	C	20	PHE	3.9
1	A	226	TYR	3.8
1	D	214	PHE	3.8
1	D	15	VAL	3.6
1	D	69	VAL	3.5
1	D	20	PHE	3.5
1	D	12	ARG	3.4
1	C	77	LEU	3.4
1	D	90	GLY	3.3

*Continued on next page...*

*Continued from previous page...*

<b>Mol</b>	<b>Chain</b>	<b>Res</b>	<b>Type</b>	<b>RSRZ</b>
1	D	224	MET	3.3
1	A	238	ARG	3.2
1	D	208	LEU	3.2
1	D	44	LYS	3.2
1	C	265	PHE	3.1
1	C	78	PRO	3.1
1	A	233	MET	3.1
1	C	231	SER	3.0
1	D	226	TYR	3.0
1	A	252	LEU	3.0
1	B	246	ASN	3.0
1	B	208	LEU	3.0
1	D	19	ALA	2.8
1	D	140	SER	2.8
1	A	214	PHE	2.8
1	A	167	SER	2.8
1	D	243	TYR	2.7
1	C	214	PHE	2.7
1	A	178	PRO	2.7
1	A	151	GLY	2.7
1	D	247	LEU	2.6
1	D	142	ALA	2.6
1	A	186	ILE	2.6
1	C	161	PHE	2.6
1	D	112	LEU	2.5
1	B	274	GLY	2.5
1	D	98	GLN	2.5
1	D	91	GLY	2.5
1	A	269	PRO	2.5
1	D	48	LYS	2.5
1	D	18	GLY	2.4
1	B	234	PRO	2.4
1	D	13	ASP	2.4
1	B	128	ILE	2.4
1	A	207	CYS	2.4
1	C	41	ILE	2.4
1	A	265	PHE	2.3
1	D	229	ASN	2.3
1	D	154	ILE	2.3
1	C	121	ILE	2.3
1	C	38	ILE	2.3
1	B	205	TYR	2.3

*Continued on next page...*

*Continued from previous page...*

Mol	Chain	Res	Type	RSRZ
1	D	24	PHE	2.2
1	C	266	PHE	2.2
1	C	128	ILE	2.2
1	C	75	GLN	2.2
1	D	47	SER	2.2
1	D	97	LEU	2.2
1	B	271	LEU	2.1
1	D	43	LYS	2.1
1	A	187	MET	2.1
1	C	82	PHE	2.1
1	B	149	VAL	2.1
1	D	68	ILE	2.1
1	D	269	PRO	2.1
1	D	101	GLY	2.1
1	B	236	ILE	2.0
1	C	43	LYS	2.0
1	D	213	PRO	2.0
1	C	9	TYR	2.0
1	D	220	GLN	2.0
1	A	209	VAL	2.0
1	A	232	LEU	2.0

## 6.2 Non-standard residues in protein, DNA, RNA chains [i](#)

There are no non-standard protein/DNA/RNA residues in this entry.

## 6.3 Carbohydrates [i](#)

There are no carbohydrates in this entry.

## 6.4 Ligands [i](#)

In the following table, the Atoms column lists the number of modelled atoms in the group and the number defined in the chemical component dictionary. The B-factors column lists the minimum, median, 95<sup>th</sup> percentile and maximum values of B factors of atoms in the group. The column labelled 'Q< 0.9' lists the number of atoms with occupancy less than 0.9.

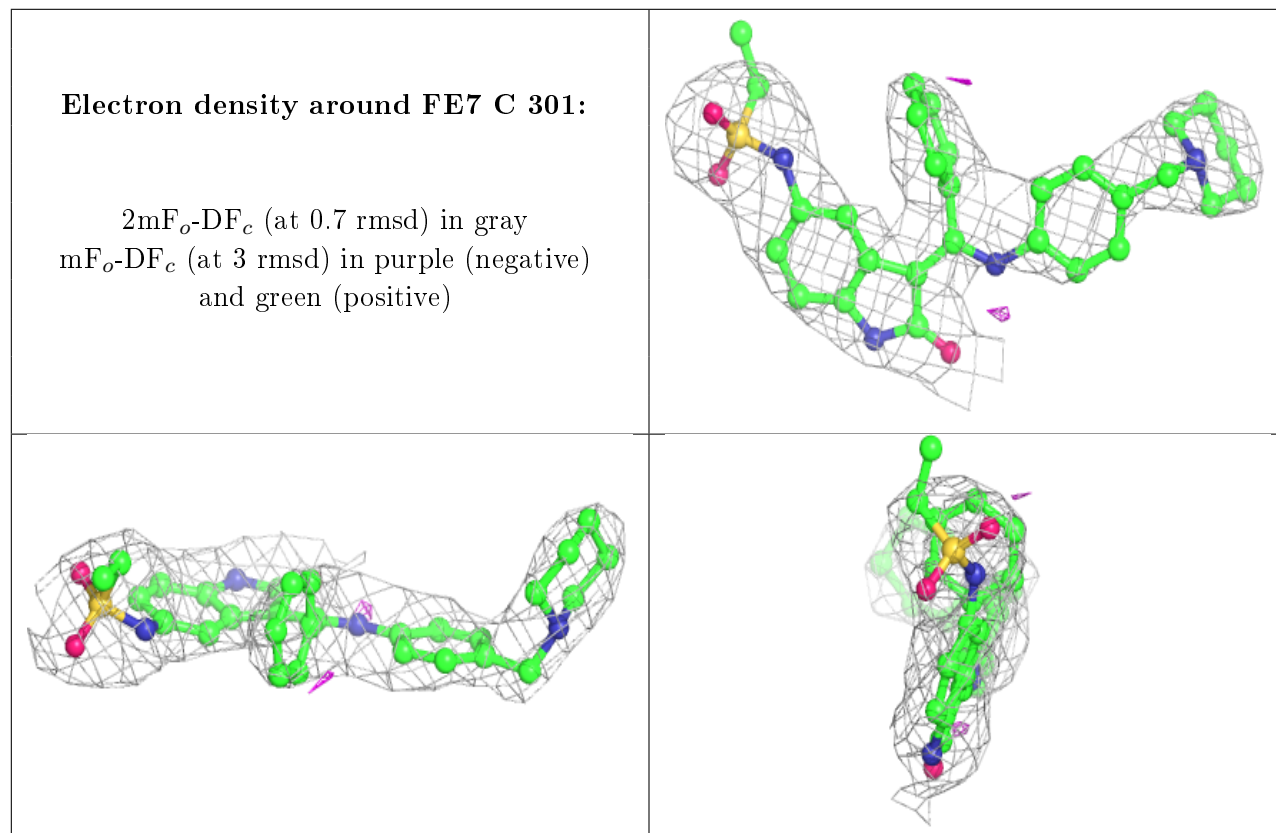
Mol	Type	Chain	Res	Atoms	RSCC	RSR	B-factors(Å <sup>2</sup> )	Q<0.9
2	FE7	C	301	37/37	0.90	0.30	81,106,121,136	0
2	FE7	B	301	37/37	0.95	0.24	52,64,114,119	0

*Continued on next page...*

Continued from previous page...

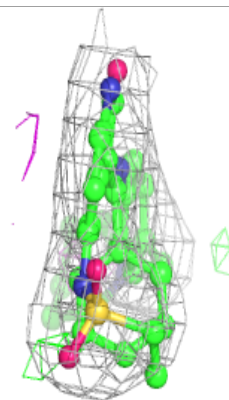
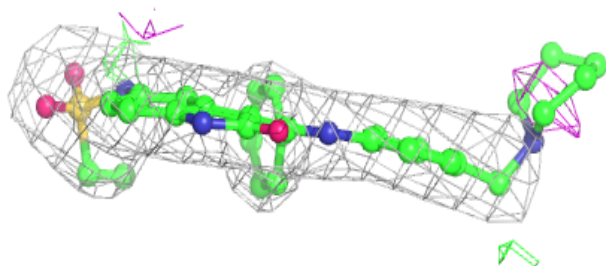
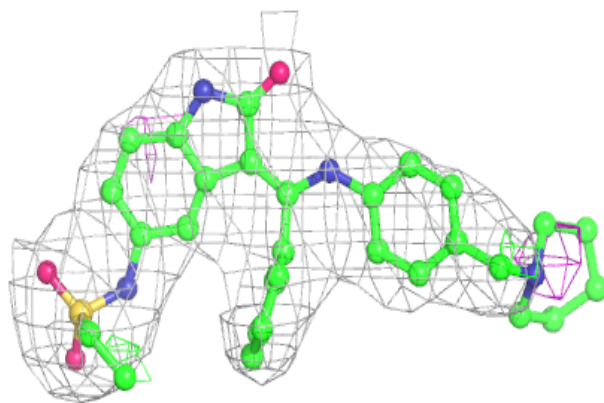
Mol	Type	Chain	Res	Atoms	RSCC	RSR	B-factors( $\text{\AA}^2$ )	Q<0.9
2	FE7	D	301	37/37	0.95	0.28	63,85,136,137	0
2	FE7	A	301	37/37	0.97	0.17	46,61,99,104	0

The following is a graphical depiction of the model fit to experimental electron density of all instances of the Ligand of Interest. In addition, ligands with molecular weight > 250 and outliers as shown on the geometry validation Tables will also be included. Each fit is shown from different orientation to approximate a three-dimensional view.

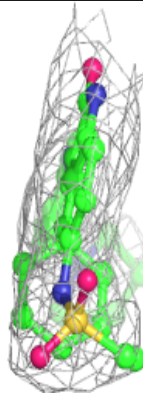
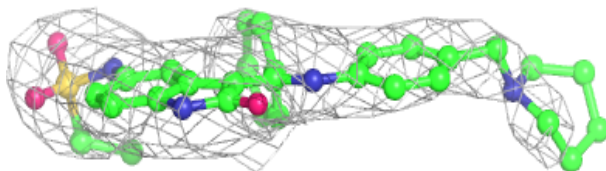
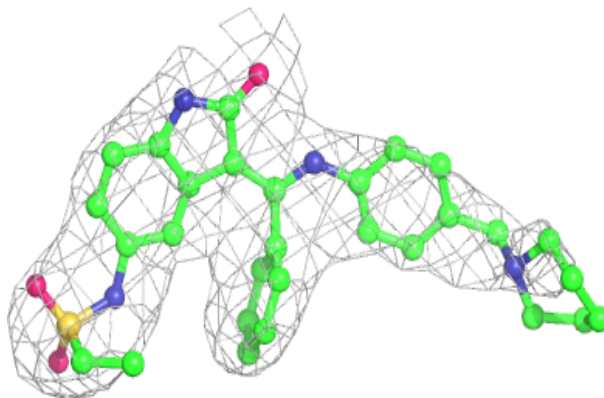


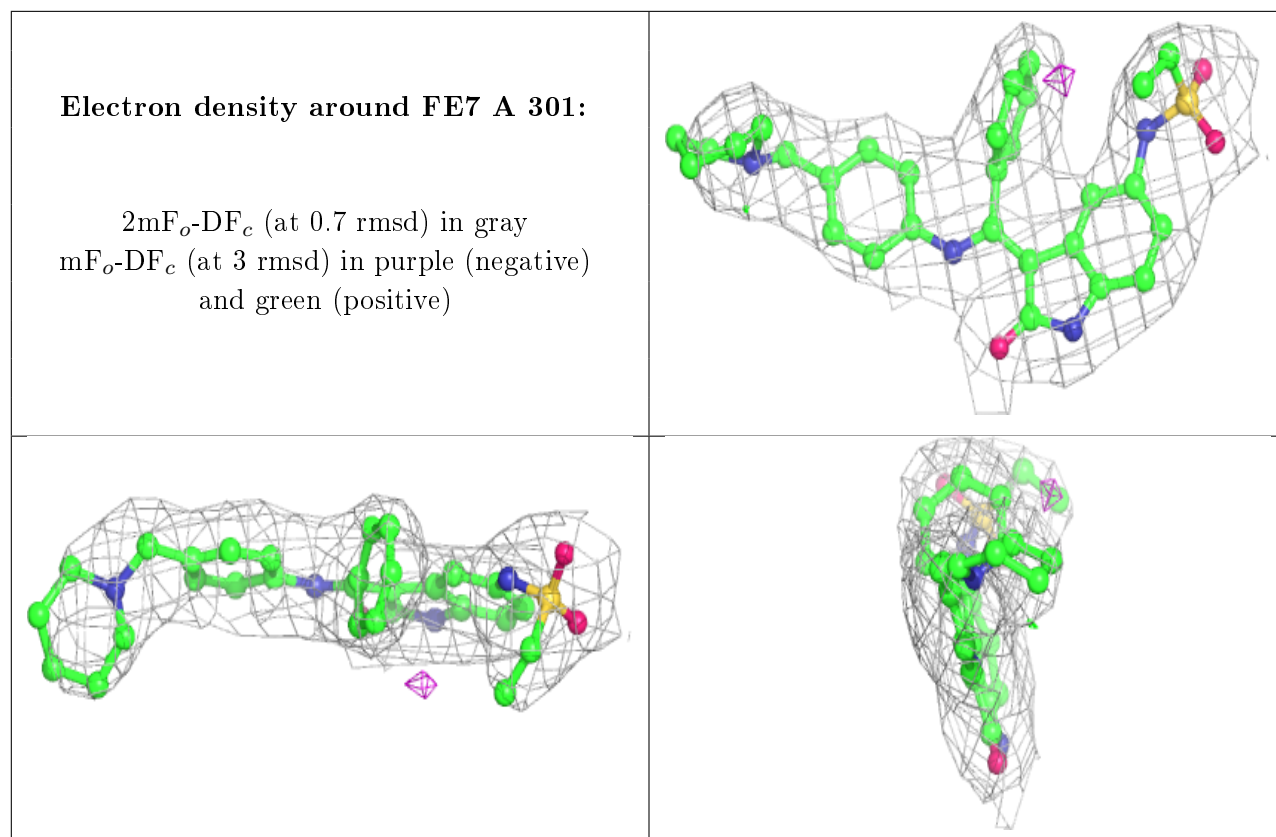
**Electron density around FE7 B 301:**

$2mF_o-DF_c$  (at 0.7 rmsd) in gray  
 $mF_o-DF_c$  (at 3 rmsd) in purple (negative)  
and green (positive)

**Electron density around FE7 D 301:**

$2mF_o-DF_c$  (at 0.7 rmsd) in gray  
 $mF_o-DF_c$  (at 3 rmsd) in purple (negative)  
and green (positive)





## 6.5 Other polymers [i](#)

There are no such residues in this entry.