



Full wwPDB X-ray Structure Validation Report ⓘ

May 13, 2020 – 05:52 am BST

PDB ID : 1QEX
Title : BACTERIOPHAGE T4 GENE PRODUCT 9 (GP9), THE TRIGGER OF TAIL CONTRACTION AND THE LONG TAIL FIBERS CONNECTOR
Authors : Kostyuchenko, V.A.; Navruzbekov, G.A.; Kurochkina, L.P.; Strelkov, S.V.; Mesyanzhinov, V.V.; Rossmann, M.G.
Deposited on : 1999-03-30
Resolution : 2.30 Å(reported)

This is a Full wwPDB X-ray Structure Validation Report for a publicly released PDB entry.

We welcome your comments at validation@mail.wwpdb.org

A user guide is available at

<https://www.wwpdb.org/validation/2017/XrayValidationReportHelp>

with specific help available everywhere you see the ⓘ symbol.

The following versions of software and data (see [references ⓘ](#)) were used in the production of this report:

MolProbity : 4.02b-467
Mogul : 1.8.5 (274361), CSD as541be (2020)
Xtriage (Phenix) : 1.13
EDS : 2.11
Percentile statistics : 20191225.v01 (using entries in the PDB archive December 25th 2019)
Refmac : 5.8.0158
CCP4 : 7.0.044 (Gargrove)
Ideal geometry (proteins) : Engh & Huber (2001)
Ideal geometry (DNA, RNA) : Parkinson et al. (1996)
Validation Pipeline (wwPDB-VP) : 2.11

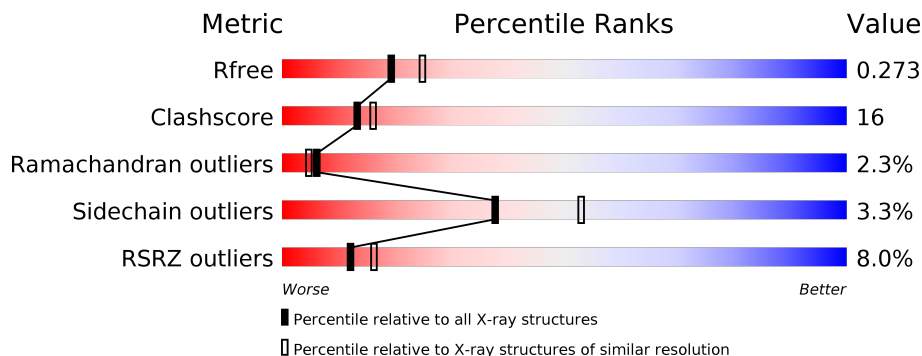
1 Overall quality at a glance

The following experimental techniques were used to determine the structure:

X-RAY DIFFRACTION

The reported resolution of this entry is 2.30 Å.

Percentile scores (ranging between 0-100) for global validation metrics of the entry are shown in the following graphic. The table shows the number of entries on which the scores are based.



Metric	Whole archive (#Entries)	Similar resolution (#Entries, resolution range(Å))
R_{free}	130704	5042 (2.30-2.30)
Clashscore	141614	5643 (2.30-2.30)
Ramachandran outliers	138981	5575 (2.30-2.30)
Sidechain outliers	138945	5575 (2.30-2.30)
RSRZ outliers	127900	4938 (2.30-2.30)

The table below summarises the geometric issues observed across the polymeric chains and their fit to the electron density. The red, orange, yellow and green segments on the lower bar indicate the fraction of residues that contain outliers for ≥ 3 , 2, 1 and 0 types of geometric quality criteria respectively. A grey segment represents the fraction of residues that are not modelled. The numeric value for each fraction is indicated below the corresponding segment, with a dot representing fractions $\leq 5\%$. The upper red bar (where present) indicates the fraction of residues that have poor fit to the electron density. The numeric value is given above the bar.

Mol	Chain	Length	Quality of chain
1	A	288	 8% 72% 25%
1	B	288	 8% 76% 20%

2 Entry composition [i](#)

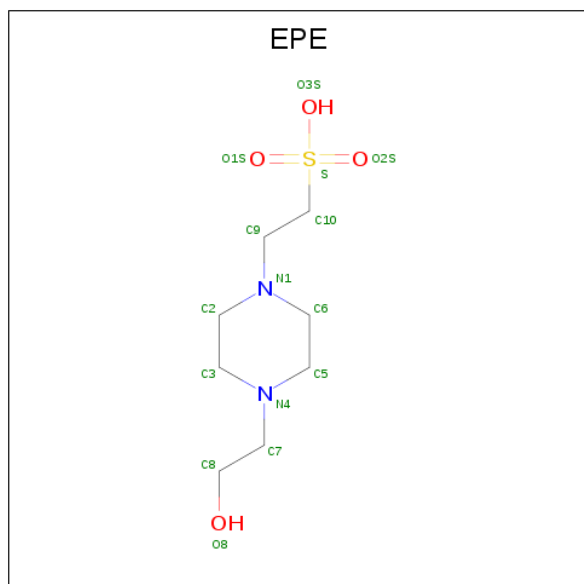
There are 3 unique types of molecules in this entry. The entry contains 4672 atoms, of which 0 are hydrogens and 0 are deuteriums.

In the tables below, the ZeroOcc column contains the number of atoms modelled with zero occupancy, the AltConf column contains the number of residues with at least one atom in alternate conformation and the Trace column contains the number of residues modelled with at most 2 atoms.

- Molecule 1 is a protein called PROTEIN (BACTERIOPHAGE T4 GENE PRODUCT 9 (GP9)).

Mol	Chain	Residues	Atoms					ZeroOcc	AltConf	Trace
			Total	C	N	O	S			
1	A	288	Total	C	N	O	S	0	0	0
			2175	1354	366	446	9			
1	B	288	Total	C	N	O	S	0	0	0
			2175	1354	366	446	9			

- Molecule 2 is 4-(2-HYDROXYETHYL)-1-PIPERAZINE ETHANESULFONIC ACID (three-letter code: EPE) (formula: C₈H₁₈N₂O₄S).



Mol	Chain	Residues	Atoms					ZeroOcc	AltConf
			Total	C	N	O	S		
2	A	1	Total	C	N	O	S	0	0
			15	8	2	4	1		
2	B	1	Total	C	N	O	S	0	0
			15	8	2	4	1		

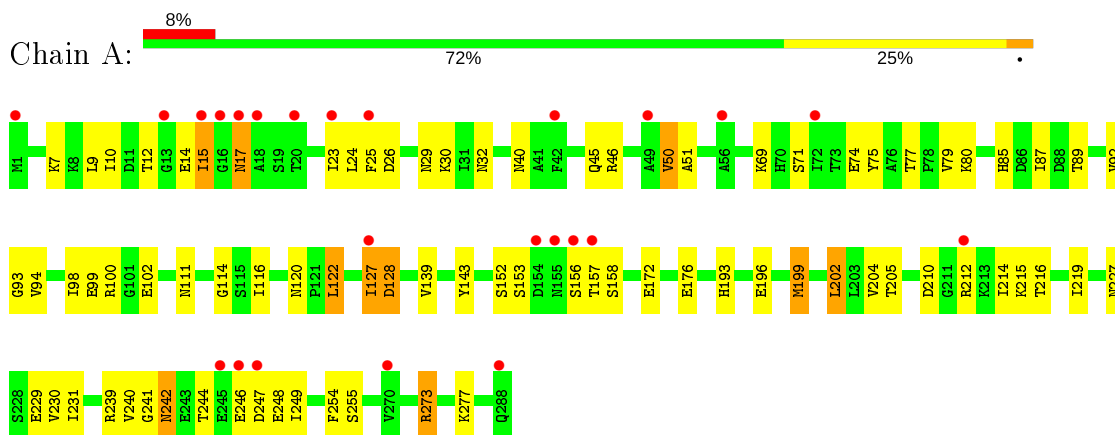
- Molecule 3 is water.

Mol	Chain	Residues	Atoms		ZeroOcc	AltConf
3	A	130	Total 130	O 130	0	0
3	B	162	Total 162	O 162	0	0

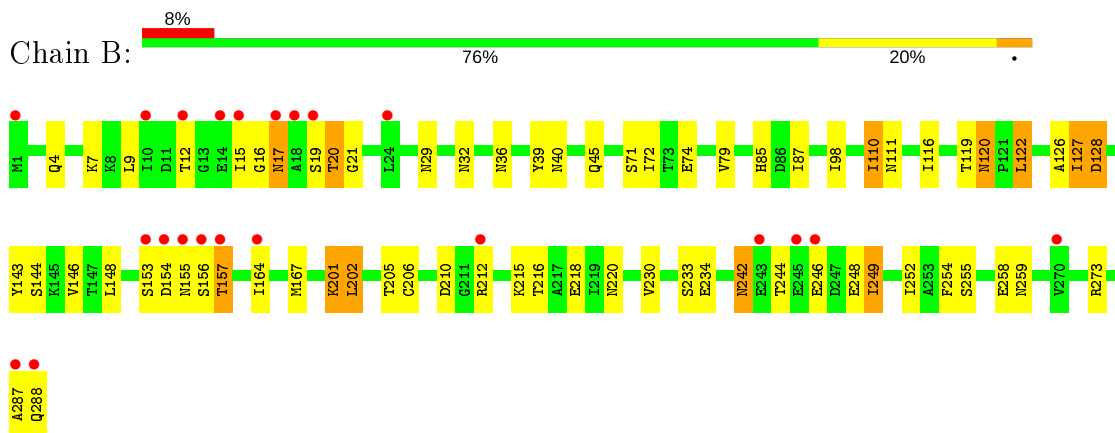
3 Residue-property plots [i](#)

These plots are drawn for all protein, RNA and DNA chains in the entry. The first graphic for a chain summarises the proportions of the various outlier classes displayed in the second graphic. The second graphic shows the sequence view annotated by issues in geometry and electron density. Residues are color-coded according to the number of geometric quality criteria for which they contain at least one outlier: green = 0, yellow = 1, orange = 2 and red = 3 or more. A red dot above a residue indicates a poor fit to the electron density ($RSRZ > 2$). Stretches of 2 or more consecutive residues without any outlier are shown as a green connector. Residues present in the sample, but not in the model, are shown in grey.

- Molecule 1: PROTEIN (BACTERIOPHAGE T4 GENE PRODUCT 9 (GP9))



- Molecule 1: PROTEIN (BACTERIOPHAGE T4 GENE PRODUCT 9 (GP9))



4 Data and refinement statistics

Property	Value	Source
Space group	H 3 2	Depositor
Cell constants a, b, c, α , β , γ	94.33Å 94.33Å 440.94Å 90.00° 90.00° 120.00°	Depositor
Resolution (Å)	20.00 – 2.30 39.69 – 2.20	Depositor EDS
% Data completeness (in resolution range)	97.5 (20.00-2.30) 99.7 (39.69-2.20)	Depositor EDS
R_{merge}	0.07	Depositor
R_{sym}	(Not available)	Depositor
$\langle I/\sigma(I) \rangle$ ¹	3.59 (at 2.20Å)	Xtrriage
Refinement program	CNS 0.5	Depositor
R, R_{free}	0.239 , 0.277 0.238 , 0.273	Depositor DCC
R_{free} test set	1957 reflections (5.01%)	wwPDB-VP
Wilson B-factor (Å ²)	31.8	Xtrriage
Anisotropy	0.142	Xtrriage
Bulk solvent k_{sol} (e/Å ³), B_{sol} (Å ²)	0.33 , 43.2	EDS
L-test for twinning ²	$\langle L \rangle = 0.52$, $\langle L^2 \rangle = 0.35$	Xtrriage
Estimated twinning fraction	No twinning to report.	Xtrriage
F_o, F_c correlation	0.94	EDS
Total number of atoms	4672	wwPDB-VP
Average B, all atoms (Å ²)	34.0	wwPDB-VP

Xtrriage's analysis on translational NCS is as follows: *The analyses of the Patterson function reveals a significant off-origin peak that is 49.14 % of the origin peak, indicating pseudo-translational symmetry. The chance of finding a peak of this or larger height randomly in a structure without pseudo-translational symmetry is equal to $7.7884e-05$. The detected translational NCS is most likely also responsible for the elevated intensity ratio.*

¹Intensities estimated from amplitudes.

²Theoretical values of $\langle |L| \rangle$, $\langle L^2 \rangle$ for acentric reflections are 0.5, 0.333 respectively for untwinned datasets, and 0.375, 0.2 for perfectly twinned datasets.

5 Model quality [i](#)

5.1 Standard geometry [i](#)

Bond lengths and bond angles in the following residue types are not validated in this section: EPE

The Z score for a bond length (or angle) is the number of standard deviations the observed value is removed from the expected value. A bond length (or angle) with $|Z| > 5$ is considered an outlier worth inspection. RMSZ is the root-mean-square of all Z scores of the bond lengths (or angles).

Mol	Chain	Bond lengths		Bond angles	
		RMSZ	# Z >5	RMSZ	# Z >5
1	A	0.32	0/2205	0.60	0/2988
1	B	0.34	0/2205	0.62	0/2988
All	All	0.33	0/4410	0.61	0/5976

There are no bond length outliers.

There are no bond angle outliers.

There are no chirality outliers.

There are no planarity outliers.

5.2 Too-close contacts [i](#)

In the following table, the Non-H and H(model) columns list the number of non-hydrogen atoms and hydrogen atoms in the chain respectively. The H(added) column lists the number of hydrogen atoms added and optimized by MolProbity. The Clashes column lists the number of clashes within the asymmetric unit, whereas Symm-Clashes lists symmetry related clashes.

Mol	Chain	Non-H	H(model)	H(added)	Clashes	Symm-Clashes
1	A	2175	0	2157	77	0
1	B	2175	0	2157	74	0
2	A	15	0	17	0	0
2	B	15	0	18	3	0
3	A	130	0	0	0	0
3	B	162	0	0	1	0
All	All	4672	0	4349	141	0

The all-atom clashscore is defined as the number of clashes found per 1000 atoms (including hydrogen atoms). The all-atom clashscore for this structure is 16.

All (141) close contacts within the same asymmetric unit are listed below, sorted by their clash

magnitude.

Atom-1	Atom-2	Interatomic distance (Å)	Clash overlap (Å)
1:B:242:ASN:HD22	1:B:242:ASN:H	1.01	0.97
1:B:234:GLU:H	2:B:302:EPE:H82	1.37	0.89
1:A:248:GLU:HG3	1:A:249:ILE:HG13	1.56	0.85
1:B:119:THR:C	1:B:120:ASN:HD22	1.81	0.84
1:B:242:ASN:H	1:B:242:ASN:ND2	1.69	0.83
1:B:201:LYS:HD3	1:B:220:ASN:OD1	1.80	0.81
1:A:40:ASN:HD22	1:A:45:GLN:HG2	1.46	0.80
1:B:234:GLU:H	2:B:302:EPE:C8	1.97	0.77
1:A:50:VAL:HG12	1:A:51:ALA:H	1.49	0.77
1:A:17:ASN:HD22	1:A:17:ASN:H	1.31	0.76
1:B:40:ASN:HD22	1:B:45:GLN:HG2	1.52	0.75
1:B:127:ILE:O	1:B:128:ASP:HB2	1.87	0.74
1:A:32:ASN:ND2	1:B:9:LEU:HB3	2.04	0.73
1:B:144:SER:HB2	1:B:164:ILE:HD11	1.70	0.73
1:A:50:VAL:HG12	1:A:51:ALA:N	2.04	0.72
1:A:244:THR:HG22	1:A:246:GLU:HG2	1.71	0.71
1:A:273:ARG:HH11	1:A:273:ARG:HB2	1.56	0.70
1:A:244:THR:CG2	1:A:246:GLU:HG2	2.21	0.69
1:B:7:LYS:HE2	1:B:9:LEU:HD11	1.74	0.69
1:B:110:ILE:HD12	1:B:167:MET:HE3	1.76	0.68
1:B:242:ASN:HD22	1:B:242:ASN:N	1.85	0.67
1:B:120:ASN:HD22	1:B:120:ASN:N	1.87	0.67
1:A:89:THR:HG22	1:A:94:VAL:HG22	1.76	0.67
1:A:128:ASP:OD2	1:A:158:SER:HB3	1.96	0.66
1:A:111:ASN:HD22	1:A:143:TYR:H	1.44	0.65
1:B:205:THR:OG1	1:B:216:THR:HG23	1.96	0.65
1:A:242:ASN:ND2	1:A:242:ASN:H	1.94	0.64
1:A:127:ILE:O	1:A:128:ASP:HB2	1.97	0.64
1:A:210:ASP:OD1	1:A:212:ARG:HG2	1.96	0.64
1:A:46:ARG:CZ	1:A:69:LYS:HD2	2.29	0.63
1:A:98:ILE:O	1:A:127:ILE:HG12	1.99	0.63
1:B:230:VAL:HG12	1:B:255:SER:HA	1.81	0.62
1:A:199:MET:HE3	1:A:199:MET:O	1.99	0.62
1:B:242:ASN:N	1:B:242:ASN:ND2	2.45	0.61
1:A:23:ILE:C	1:A:23:ILE:HD12	2.21	0.61
1:B:248:GLU:O	1:B:249:ILE:HB	2.00	0.61
1:A:10:ILE:H	1:B:32:ASN:HD21	1.49	0.60
1:A:230:VAL:HG12	1:A:255:SER:HA	1.83	0.60
1:A:32:ASN:HD22	1:B:9:LEU:HB3	1.64	0.60
1:A:71:SER:OG	1:A:74:GLU:HG3	2.01	0.60
1:A:242:ASN:HD22	1:A:242:ASN:H	1.50	0.60

Continued on next page...

Continued from previous page...

Atom-1	Atom-2	Interatomic distance (Å)	Clash overlap (Å)
1:A:25:PHE:HD1	1:B:15:ILE:HD12	1.66	0.59
1:A:46:ARG:NH1	1:A:69:LYS:HD2	2.19	0.58
1:A:102:GLU:HA	1:A:153:SER:HB3	1.86	0.58
1:A:14:GLU:O	1:A:15:ILE:HB	2.04	0.57
1:B:19:SER:O	1:B:21:GLY:N	2.38	0.57
1:A:156:SER:O	1:A:158:SER:N	2.38	0.57
1:A:26:ASP:O	1:A:30:LYS:HG3	2.05	0.56
1:A:242:ASN:HB2	1:A:248:GLU:HG2	1.88	0.56
1:A:17:ASN:N	1:A:17:ASN:HD22	1.99	0.56
1:B:98:ILE:O	1:B:127:ILE:HG12	2.05	0.56
1:A:205:THR:HG23	1:A:216:THR:HG22	1.88	0.56
1:B:71:SER:OG	1:B:74:GLU:HG3	2.06	0.55
1:B:111:ASN:HD22	1:B:143:TYR:H	1.55	0.55
1:B:144:SER:HB2	1:B:164:ILE:CD1	2.37	0.55
1:B:233:SER:HA	2:B:302:EPE:H81	1.88	0.55
1:A:29:ASN:OD1	1:B:12:THR:HG21	2.06	0.55
1:B:79:VAL:HG11	1:B:85:HIS:HE2	1.71	0.54
1:A:111:ASN:HD21	1:A:116:ILE:H	1.55	0.54
1:B:72:ILE:HD12	1:B:72:ILE:H	1.72	0.54
1:B:201:LYS:HE2	1:B:218:GLU:OE2	2.07	0.54
1:B:210:ASP:OD2	1:B:212:ARG:HD3	2.07	0.54
1:A:12:THR:HG21	1:B:29:ASN:OD1	2.08	0.54
1:A:239:ARG:HB3	1:A:249:ILE:HD12	1.90	0.53
1:A:100:ARG:HB2	1:A:127:ILE:HG21	1.91	0.53
1:A:219:ILE:HD12	1:A:219:ILE:N	2.24	0.53
1:B:111:ASN:HD21	1:B:116:ILE:H	1.57	0.53
1:A:7:LYS:HB2	1:B:39:TYR:CE2	2.44	0.52
1:B:146:VAL:HG22	1:B:164:ILE:HD13	1.90	0.52
1:B:16:GLY:O	1:B:17:ASN:OD1	2.28	0.52
1:B:153:SER:HA	1:B:157:THR:O	2.10	0.52
1:A:230:VAL:HG11	1:A:254:PHE:HB3	1.90	0.52
1:B:244:THR:C	1:B:246:GLU:H	2.13	0.52
1:B:79:VAL:HG11	1:B:85:HIS:NE2	2.26	0.51
1:A:227:ASN:HD22	1:A:227:ASN:N	2.09	0.51
1:B:72:ILE:HD12	1:B:72:ILE:N	2.27	0.50
1:A:212:ARG:O	1:A:241:GLY:HA3	2.12	0.50
1:B:153:SER:O	1:B:155:ASN:N	2.45	0.50
1:A:202:LEU:HD23	1:A:202:LEU:N	2.27	0.50
1:A:273:ARG:HH11	1:A:273:ARG:CB	2.24	0.49
1:A:230:VAL:HG13	1:A:230:VAL:O	2.12	0.49
1:A:23:ILE:HD12	1:A:24:LEU:N	2.27	0.49

Continued on next page...

Continued from previous page...

Atom-1	Atom-2	Interatomic distance (Å)	Clash overlap (Å)
1:B:230:VAL:HG11	1:B:254:PHE:HB3	1.93	0.49
1:A:7:LYS:HB2	1:B:39:TYR:CD2	2.48	0.49
1:A:240:VAL:HG12	1:A:241:GLY:N	2.27	0.49
1:B:157:THR:O	1:B:157:THR:OG1	2.29	0.48
1:A:176:GLU:HG3	1:A:277:LYS:HG3	1.94	0.48
1:A:80:LYS:HD3	1:A:99:GLU:OE2	2.14	0.47
1:B:20:THR:HG22	1:B:21:GLY:N	2.29	0.47
1:A:244:THR:HG21	1:A:246:GLU:HG2	1.95	0.47
1:B:287:ALA:O	1:B:288:GLN:HB2	2.15	0.47
1:B:216:THR:HG22	3:B:310:HOH:O	2.14	0.47
1:A:152:SER:O	1:A:158:SER:HA	2.16	0.46
1:A:111:ASN:ND2	1:A:114:GLY:HA2	2.30	0.46
1:A:89:THR:O	1:A:120:ASN:HB3	2.16	0.46
1:A:102:GLU:HA	1:A:153:SER:CB	2.45	0.46
1:B:110:ILE:HD13	1:B:110:ILE:HA	1.79	0.46
1:A:50:VAL:CG1	1:A:51:ALA:H	2.17	0.46
1:B:19:SER:O	1:B:20:THR:C	2.55	0.45
1:B:202:LEU:HD23	1:B:202:LEU:N	2.32	0.45
1:A:246:GLU:O	1:A:247:ASP:C	2.55	0.45
1:B:110:ILE:HD12	1:B:167:MET:CE	2.47	0.44
1:B:126:ALA:O	1:B:127:ILE:C	2.56	0.44
1:A:87:ILE:HG23	1:A:94:VAL:HG21	1.99	0.44
1:B:230:VAL:HG13	1:B:230:VAL:O	2.17	0.44
1:B:252:ILE:N	1:B:252:ILE:HD12	2.33	0.44
1:B:201:LYS:HZ3	1:B:201:LYS:HG2	1.62	0.44
1:B:206:CYS:HA	1:B:273:ARG:O	2.18	0.44
1:A:199:MET:C	1:A:199:MET:HE3	2.39	0.43
1:B:258:GLU:O	1:B:259:ASN:HB2	2.19	0.43
1:A:79:VAL:HG11	1:A:85:HIS:NE2	2.32	0.43
1:A:215:LYS:HG2	1:A:216:THR:N	2.33	0.43
1:B:120:ASN:N	1:B:120:ASN:ND2	2.59	0.43
1:A:92:VAL:HG22	1:A:93:GLY:N	2.34	0.43
1:B:87:ILE:HG21	1:B:122:LEU:HG	2.00	0.43
1:A:193:HIS:HB3	1:A:196:GLU:HG3	2.01	0.43
1:A:227:ASN:ND2	1:A:227:ASN:N	2.67	0.43
1:B:210:ASP:OD2	1:B:212:ARG:HB3	2.19	0.43
1:B:110:ILE:HG23	1:B:167:MET:HE1	2.01	0.43
1:A:9:LEU:HD11	1:B:36:ASN:HD21	1.84	0.43
1:B:110:ILE:HG23	1:B:167:MET:CE	2.49	0.42
1:B:202:LEU:HD11	1:B:254:PHE:CE2	2.55	0.42
1:A:204:VAL:O	1:A:216:THR:HA	2.19	0.42

Continued on next page...

Continued from previous page...

Atom-1	Atom-2	Interatomic distance (Å)	Clash overlap (Å)
1:A:75:TYR:HH	1:A:85:HIS:HD1	1.67	0.41
1:B:127:ILE:HD13	1:B:127:ILE:HA	1.82	0.41
1:B:72:ILE:H	1:B:72:ILE:CD1	2.34	0.41
1:A:227:ASN:O	1:A:229:GLU:HG3	2.21	0.41
1:A:214:ILE:HG22	1:A:240:VAL:HB	2.03	0.41
1:B:215:LYS:HG2	1:B:216:THR:N	2.34	0.41
1:B:230:VAL:HG11	1:B:255:SER:N	2.36	0.41
1:A:127:ILE:O	1:A:128:ASP:CB	2.67	0.41
1:A:231:ILE:H	1:A:231:ILE:HD12	1.86	0.41
1:A:40:ASN:ND2	1:A:45:GLN:HG2	2.23	0.41
1:B:20:THR:O	1:B:21:GLY:C	2.58	0.41
1:B:119:THR:OG1	1:B:120:ASN:ND2	2.53	0.40
1:A:25:PHE:CD1	1:B:15:ILE:HD12	2.52	0.40
1:A:122:LEU:HB3	1:A:139:VAL:HB	2.04	0.40
1:A:17:ASN:O	1:A:17:ASN:CG	2.59	0.40
1:A:111:ASN:ND2	1:A:143:TYR:H	2.16	0.40
1:B:15:ILE:HG22	1:B:15:ILE:O	2.21	0.40
1:B:40:ASN:ND2	1:B:45:GLN:HG2	2.28	0.40

There are no symmetry-related clashes.

5.3 Torsion angles [i](#)

5.3.1 Protein backbone [i](#)

In the following table, the Percentiles column shows the percent Ramachandran outliers of the chain as a percentile score with respect to all X-ray entries followed by that with respect to entries of similar resolution.

The Analysed column shows the number of residues for which the backbone conformation was analysed, and the total number of residues.

Mol	Chain	Analysed	Favoured	Allowed	Outliers	Percentiles
1	A	286/288 (99%)	260 (91%)	21 (7%)	5 (2%)	9 8
1	B	286/288 (99%)	261 (91%)	17 (6%)	8 (3%)	5 3
All	All	572/576 (99%)	521 (91%)	38 (7%)	13 (2%)	6 5

All (13) Ramachandran outliers are listed below:

Mol	Chain	Res	Type
1	A	128	ASP
1	B	20	THR
1	B	128	ASP
1	A	50	VAL
1	A	157	THR
1	B	4	GLN
1	B	17	ASN
1	B	154	ASP
1	B	156	SER
1	B	127	ILE
1	A	127	ILE
1	A	15	ILE
1	B	249	ILE

5.3.2 Protein sidechains [i](#)

In the following table, the Percentiles column shows the percent sidechain outliers of the chain as a percentile score with respect to all X-ray entries followed by that with respect to entries of similar resolution.

The Analysed column shows the number of residues for which the sidechain conformation was analysed, and the total number of residues.

Mol	Chain	Analysed	Rotameric	Outliers	Percentiles	
1	A	244/244 (100%)	236 (97%)	8 (3%)	38	53
1	B	244/244 (100%)	236 (97%)	8 (3%)	38	53
All	All	488/488 (100%)	472 (97%)	16 (3%)	38	53

All (16) residues with a non-rotameric sidechain are listed below:

Mol	Chain	Res	Type
1	A	17	ASN
1	A	77	THR
1	A	122	LEU
1	A	172	GLU
1	A	199	MET
1	A	202	LEU
1	A	242	ASN
1	A	273	ARG
1	B	110	ILE
1	B	120	ASN
1	B	122	LEU

Continued on next page...

Continued from previous page...

Mol	Chain	Res	Type
1	B	148	LEU
1	B	157	THR
1	B	201	LYS
1	B	202	LEU
1	B	242	ASN

Some sidechains can be flipped to improve hydrogen bonding and reduce clashes. All (20) such sidechains are listed below:

Mol	Chain	Res	Type
1	A	17	ASN
1	A	32	ASN
1	A	40	ASN
1	A	59	GLN
1	A	111	ASN
1	A	207	GLN
1	A	227	ASN
1	A	242	ASN
1	A	251	ASN
1	B	32	ASN
1	B	36	ASN
1	B	40	ASN
1	B	59	GLN
1	B	111	ASN
1	B	120	ASN
1	B	125	GLN
1	B	155	ASN
1	B	180	ASN
1	B	227	ASN
1	B	242	ASN

5.3.3 RNA [i](#)

There are no RNA molecules in this entry.

5.4 Non-standard residues in protein, DNA, RNA chains [i](#)

There are no non-standard protein/DNA/RNA residues in this entry.

5.5 Carbohydrates [i](#)

There are no carbohydrates in this entry.

5.6 Ligand geometry [i](#)

2 ligands are modelled in this entry.

In the following table, the Counts columns list the number of bonds (or angles) for which Mogul statistics could be retrieved, the number of bonds (or angles) that are observed in the model and the number of bonds (or angles) that are defined in the Chemical Component Dictionary. The Link column lists molecule types, if any, to which the group is linked. The Z score for a bond length (or angle) is the number of standard deviations the observed value is removed from the expected value. A bond length (or angle) with $|Z| > 2$ is considered an outlier worth inspection. RMSZ is the root-mean-square of all Z scores of the bond lengths (or angles).

Mol	Type	Chain	Res	Link	Bond lengths			Bond angles		
					Counts	RMSZ	# $ Z > 2$	Counts	RMSZ	# $ Z > 2$
2	EPE	B	302	-	15,15,15	1.79	2 (13%)	18,20,20	3.60	12 (66%)
2	EPE	A	301	-	15,15,15	1.35	1 (6%)	18,20,20	3.75	12 (66%)

In the following table, the Chirals column lists the number of chiral outliers, the number of chiral centers analysed, the number of these observed in the model and the number defined in the Chemical Component Dictionary. Similar counts are reported in the Torsion and Rings columns. '-' means no outliers of that kind were identified.

Mol	Type	Chain	Res	Link	Chirals	Torsions	Rings
2	EPE	B	302	-	-	6/9/19/19	0/1/1/1
2	EPE	A	301	-	-	5/9/19/19	0/1/1/1

All (3) bond length outliers are listed below:

Mol	Chain	Res	Type	Atoms	Z	Observed(Å)	Ideal(Å)
2	B	302	EPE	O3S-S	4.79	1.64	1.47
2	B	302	EPE	C10-S	4.06	1.83	1.77
2	A	301	EPE	O3S-S	3.91	1.61	1.47

All (24) bond angle outliers are listed below:

Mol	Chain	Res	Type	Atoms	Z	Observed($^{\circ}$)	Ideal($^{\circ}$)
2	A	301	EPE	O2S-S-C10	7.22	115.61	106.92
2	B	302	EPE	O2S-S-C10	7.01	115.36	106.92
2	A	301	EPE	C2-C3-N4	6.46	123.90	110.64

Continued on next page...

Continued from previous page...

Mol	Chain	Res	Type	Atoms	Z	Observed(°)	Ideal(°)
2	A	301	EPE	C5-C6-N1	5.97	122.89	110.64
2	B	302	EPE	C7-N4-C3	5.60	125.55	111.23
2	B	302	EPE	C5-C6-N1	5.55	122.03	110.64
2	A	301	EPE	O1S-S-C10	-4.68	101.28	106.92
2	B	302	EPE	O8-C8-C7	4.55	130.05	111.19
2	B	302	EPE	O3S-S-O1S	-4.42	100.48	111.27
2	A	301	EPE	C6-C5-N4	4.34	119.55	110.64
2	A	301	EPE	O8-C8-C7	3.93	127.47	111.19
2	B	302	EPE	C2-C3-N4	3.88	118.61	110.64
2	B	302	EPE	C7-N4-C5	3.78	120.89	111.23
2	B	302	EPE	C6-C5-N4	3.64	118.11	110.64
2	A	301	EPE	C3-C2-N1	3.56	117.95	110.64
2	A	301	EPE	C6-N1-C2	3.54	116.80	108.83
2	A	301	EPE	C9-N1-C2	3.38	119.87	111.23
2	B	302	EPE	C9-N1-C6	3.35	119.81	111.23
2	B	302	EPE	C9-N1-C2	3.06	119.06	111.23
2	A	301	EPE	O3S-S-O1S	-3.05	103.81	111.27
2	B	302	EPE	C6-N1-C2	2.88	115.30	108.83
2	A	301	EPE	O3S-S-C10	2.67	110.09	105.77
2	A	301	EPE	C7-N4-C5	2.36	117.28	111.23
2	B	302	EPE	C5-N4-C3	2.09	113.54	108.83

There are no chirality outliers.

All (11) torsion outliers are listed below:

Mol	Chain	Res	Type	Atoms
2	B	302	EPE	C9-C10-S-O1S
2	A	301	EPE	C9-C10-S-O1S
2	A	301	EPE	C9-C10-S-O2S
2	A	301	EPE	C9-C10-S-O3S
2	B	302	EPE	N4-C7-C8-O8
2	B	302	EPE	C9-C10-S-O3S
2	B	302	EPE	C10-C9-N1-C6
2	A	301	EPE	C8-C7-N4-C3
2	B	302	EPE	C9-C10-S-O2S
2	B	302	EPE	C8-C7-N4-C3
2	A	301	EPE	C8-C7-N4-C5

There are no ring outliers.

1 monomer is involved in 3 short contacts:

Mol	Chain	Res	Type	Clashes	Symm-Clashes
2	B	302	EPE	3	0

5.7 Other polymers [i](#)

There are no such residues in this entry.

5.8 Polymer linkage issues [i](#)

There are no chain breaks in this entry.

6 Fit of model and data

6.1 Protein, DNA and RNA chains

In the following table, the column labelled ‘#RSRZ> 2’ contains the number (and percentage) of RSRZ outliers, followed by percent RSRZ outliers for the chain as percentile scores relative to all X-ray entries and entries of similar resolution. The OWAB column contains the minimum, median, 95th percentile and maximum values of the occupancy-weighted average B-factor per residue. The column labelled ‘Q< 0.9’ lists the number of (and percentage) of residues with an average occupancy less than 0.9.

Mol	Chain	Analysed	<RSRZ>	#RSRZ>2	OWAB(Å ²)	Q<0.9
1	A	288/288 (100%)	0.35	24 (8%) 11 15	14, 34, 64, 72	0
1	B	288/288 (100%)	0.19	22 (7%) 13 18	14, 28, 62, 70	0
All	All	576/576 (100%)	0.27	46 (7%) 12 16	14, 32, 62, 72	0

All (46) RSRZ outliers are listed below:

Mol	Chain	Res	Type	RSRZ
1	A	157	THR	8.1
1	A	247	ASP	7.9
1	B	17	ASN	6.9
1	A	18	ALA	6.5
1	A	155	ASN	6.4
1	A	16	GLY	6.2
1	B	14	GLU	6.0
1	B	155	ASN	5.7
1	B	288	GLN	5.7
1	A	56	ALA	5.4
1	A	15	ILE	5.1
1	A	156	SER	4.5
1	A	288	GLN	4.4
1	A	17	ASN	4.3
1	B	157	THR	4.1
1	B	156	SER	3.9
1	B	1	MET	3.9
1	B	153	SER	3.8
1	B	15	ILE	3.8
1	A	246	GLU	3.6
1	A	154	ASP	3.5
1	B	246	GLU	3.2
1	A	13	GLY	3.2
1	A	25	PHE	3.1

Continued on next page...

Continued from previous page...

Mol	Chain	Res	Type	RSRZ
1	B	18	ALA	3.1
1	A	23	ILE	3.1
1	B	154	ASP	3.0
1	B	10	ILE	2.8
1	B	19	SER	2.7
1	A	212	ARG	2.6
1	A	245	GLU	2.6
1	B	245	GLU	2.6
1	B	212	ARG	2.5
1	B	270	VAL	2.5
1	B	12	THR	2.4
1	B	287	ALA	2.4
1	B	164	ILE	2.3
1	B	24	LEU	2.2
1	A	1	MET	2.2
1	A	20	THR	2.1
1	A	127	ILE	2.1
1	A	42	PHE	2.1
1	B	243	GLU	2.1
1	A	49	ALA	2.1
1	A	270	VAL	2.1
1	A	72	ILE	2.1

6.2 Non-standard residues in protein, DNA, RNA chains [\(i\)](#)

There are no non-standard protein/DNA/RNA residues in this entry.

6.3 Carbohydrates [\(i\)](#)

There are no carbohydrates in this entry.

6.4 Ligands [\(i\)](#)

In the following table, the Atoms column lists the number of modelled atoms in the group and the number defined in the chemical component dictionary. The B-factors column lists the minimum, median, 95th percentile and maximum values of B factors of atoms in the group. The column labelled 'Q< 0.9' lists the number of atoms with occupancy less than 0.9.

Mol	Type	Chain	Res	Atoms	RSCC	RSR	B-factors(Å ²)	Q<0.9
2	EPE	A	301	15/15	0.81	0.21	45,50,55,58	0

Continued on next page...

Continued from previous page...

Mol	Type	Chain	Res	Atoms	RSCC	RSR	B-factors(\AA^2)	Q<0.9
2	EPE	B	302	15/15	0.86	0.20	48,49,53,54	0

6.5 Other polymers [i](#)

There are no such residues in this entry.