



Full wwPDB X-ray Structure Validation Report ⓘ

May 9, 2022 – 11:28 am BST

PDB ID : 7QEZ
Title : Crystal structure of the SARS-CoV-2 RBD in complex with the ultrapotent antibody CV2.1169 and CR3022
Authors : Fernandez, I.; Rey, F.A.
Deposited on : 2021-12-03
Resolution : 2.89 Å(reported)

This is a Full wwPDB X-ray Structure Validation Report for a publicly released PDB entry.

We welcome your comments at validation@mail.wwpdb.org

A user guide is available at

<https://www.wwpdb.org/validation/2017/XrayValidationReportHelp>

with specific help available everywhere you see the ⓘ symbol.

The following versions of software and data (see [references ⓘ](#)) were used in the production of this report:

MolProbity : 4.02b-467
Mogul : 1.8.4, CSD as541be (2020)
Xtriage (Phenix) : 1.13
EDS : 2.28.1
Percentile statistics : 20191225.v01 (using entries in the PDB archive December 25th 2019)
Refmac : 5.8.0267
CCP4 : 7.1.010 (Gargrove)
Ideal geometry (proteins) : Engh & Huber (2001)
Ideal geometry (DNA, RNA) : Parkinson et al. (1996)
Validation Pipeline (wwPDB-VP) : 2.28.1

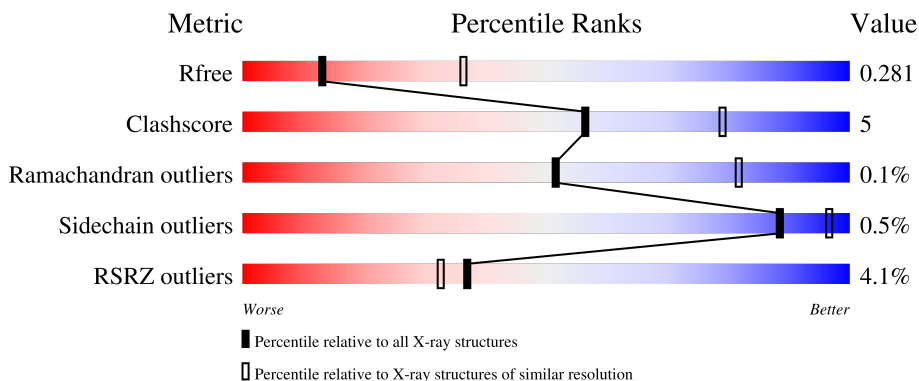
1 Overall quality at a glance

The following experimental techniques were used to determine the structure:

X-RAY DIFFRACTION

The reported resolution of this entry is 2.89 Å.

Percentile scores (ranging between 0-100) for global validation metrics of the entry are shown in the following graphic. The table shows the number of entries on which the scores are based.



Metric	Whole archive (#Entries)	Similar resolution (#Entries, resolution range(Å))
R_{free}	130704	1957 (2.90-2.90)
Clashscore	141614	2172 (2.90-2.90)
Ramachandran outliers	138981	2115 (2.90-2.90)
Sidechain outliers	138945	2117 (2.90-2.90)
RSRZ outliers	127900	1906 (2.90-2.90)

The table below summarises the geometric issues observed across the polymeric chains and their fit to the electron density. The red, orange, yellow and green segments of the lower bar indicate the fraction of residues that contain outliers for ≥ 3 , 2, 1 and 0 types of geometric quality criteria respectively. A grey segment represents the fraction of residues that are not modelled. The numeric value for each fraction is indicated below the corresponding segment, with a dot representing fractions $\leq 5\%$. The upper red bar (where present) indicates the fraction of residues that have poor fit to the electron density. The numeric value is given above the bar.

Mol	Chain	Length	Quality of chain
1	A	206	
2	E	229	
3	F	221	
4	H	225	
5	L	215	

The following table lists non-polymeric compounds, carbohydrate monomers and non-standard residues in protein, DNA, RNA chains that are outliers for geometric or electron-density-fit criteria:

Mol	Type	Chain	Res	Chirality	Geometry	Clashes	Electron density
7	SO4	L	301	-	-	X	-

2 Entry composition

There are 8 unique types of molecules in this entry. The entry contains 6633 atoms, of which 0 are hydrogens and 0 are deuteriums.

In the tables below, the ZeroOcc column contains the number of atoms modelled with zero occupancy, the AltConf column contains the number of residues with at least one atom in alternate conformation and the Trace column contains the number of residues modelled with at most 2 atoms.

- Molecule 1 is a protein called Spike protein S1.

Mol	Chain	Residues	Atoms					ZeroOcc	AltConf	Trace
			Total	C	N	O	S			
1	A	196	1552	997	259	288	8	0	0	0

There are 9 discrepancies between the modelled and reference sequences:

Chain	Residue	Modelled	Actual	Comment	Reference
A	367	PHE	VAL	variant	UNP P0DTC2
A	529	GLY	-	expression tag	UNP P0DTC2
A	530	SER	-	expression tag	UNP P0DTC2
A	531	GLY	-	expression tag	UNP P0DTC2
A	532	ASP	-	expression tag	UNP P0DTC2
A	533	ASP	-	expression tag	UNP P0DTC2
A	534	ASP	-	expression tag	UNP P0DTC2
A	535	ASP	-	expression tag	UNP P0DTC2
A	536	LYS	-	expression tag	UNP P0DTC2

- Molecule 2 is a protein called CR3022 heavy chain.

Mol	Chain	Residues	Atoms					ZeroOcc	AltConf	Trace
			Total	C	N	O	S			
2	E	214	1596	1016	259	313	8	46	0	0

- Molecule 3 is a protein called CR3022 light chain.

Mol	Chain	Residues	Atoms					ZeroOcc	AltConf	Trace
			Total	C	N	O	S			
3	F	218	1694	1065	281	344	4	24	0	0

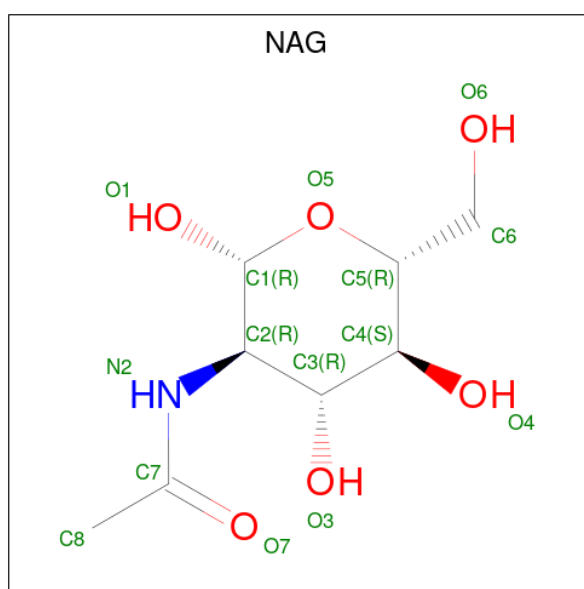
- Molecule 4 is a protein called CV2.1169 IgA heavy chain.

Mol	Chain	Residues	Atoms					ZeroOcc	AltConf	Trace
			Total	C	N	O	S			
4	H	123	Total 941	C 589	N 161	O 184	S 7	0	0	0

- Molecule 5 is a protein called CV2.1169 light chain.

Mol	Chain	Residues	Atoms					ZeroOcc	AltConf	Trace
			Total	C	N	O	S			
5	L	108	Total 830	C 522	N 142	O 164	S 2	0	0	0

- Molecule 6 is 2-acetamido-2-deoxy-beta-D-glucopyranose (three-letter code: NAG) (formula: $C_8H_{15}NO_6$).



Mol	Chain	Residues	Atoms				ZeroOcc	AltConf
			Total	C	N	O		
6	A	1	Total 14	C 8	N 1	O 5	0	0

- Molecule 7 is SULFATE ION (three-letter code: SO4) (formula: O_4S).



Mol	Chain	Residues	Atoms			ZeroOcc	AltConf
7	L	1	Total	O	S	0	0
			5	4	1		


- Molecule 8 is water.

Mol	Chain	Residues	Atoms		ZeroOcc	AltConf
8	A	1	Total	O	0	0
			1	1		

3 Residue-property plots [i](#)


These plots are drawn for all protein, RNA, DNA and oligosaccharide chains in the entry. The first graphic for a chain summarises the proportions of the various outlier classes displayed in the second graphic. The second graphic shows the sequence view annotated by issues in geometry and electron density. Residues are color-coded according to the number of geometric quality criteria for which they contain at least one outlier: green = 0, yellow = 1, orange = 2 and red = 3 or more. A red dot above a residue indicates a poor fit to the electron density ($RSRZ > 2$). Stretches of 2 or more consecutive residues without any outlier are shown as a green connector. Residues present in the sample, but not in the model, are shown in grey.

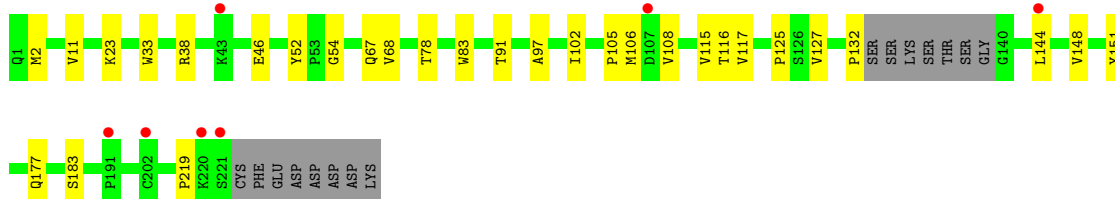
- Molecule 1: Spike protein S1

Chain A: 




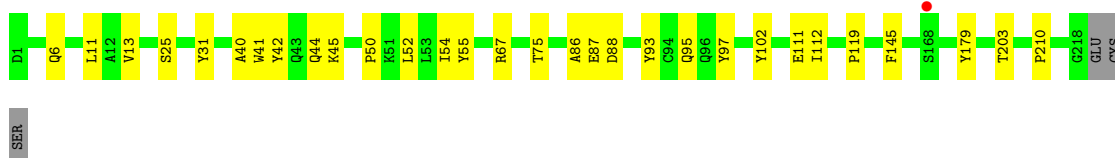
- Molecule 2: CR3022 heavy chain

Chain E: 

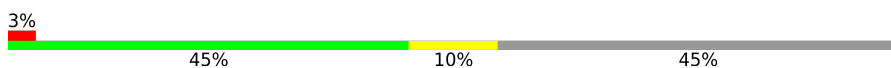


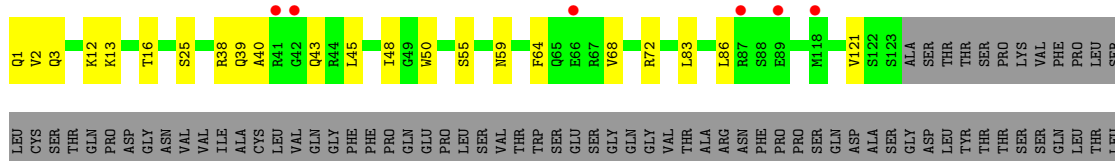
- Molecule 3: CR3022 light chain

Chain F: 



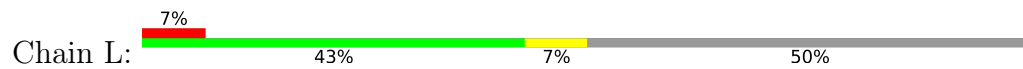
- Molecule 4: CV2.1169 IgA heavy chain

Chain H: 



PRO
ALA
THR
GLN
CYS
LEU
ALA
GLY
LYS
SER
VAL
THR
CYS
HIS
VAL
LYS
HIS
TYR
THR
ASN
PRO
SER
GLN
ASP
VAL
THR
VAL
PRO
CYS
PRO

● Molecule 5: CV2.1169 light chain



PRO
SER
ASP
GLU
GLN
LEU
LYS
SER
GLY
THR
ALA
SER
VAL
VAL
CYS
LEU
LEU
ASN
ASN
PHE
TYR
PRO
LEU
SER
GLU
ALA
LYS
VAL
GLN
TRP
LYS
VAL
ASP
ASN
ALA
LEU
GLN
SER
GLY
ASN
SER
GLN
GLU
SER
VAL
THR
GLU
GLN
ASP
SER
LYS
ASP
SER
ALA
THR
TYR
PRO
SER
LEU
SER
SER
THR
LEU

THR
LEU
SER
LYS
ALA
ASP
TYR
GLU
LYS
HIS
LYS
VAL
TYR
ALA
CYS
GLU
VAL
THR
HIS
GLN
GLY
LEU
SER
SER
PRO
VAL
THR
LYS
PHE
SER
ASN
ARG
GLY
GLU
CYS

4 Data and refinement statistics i

Property	Value	Source
Space group	P 41	Depositor
Cell constants a, b, c, α , β , γ	97.75Å 97.75Å 164.47Å 90.00° 90.00° 90.00°	Depositor
Resolution (Å)	48.88 – 2.89 48.88 – 2.88	Depositor EDS
% Data completeness (in resolution range)	99.8 (48.88-2.89) 93.1 (48.88-2.88)	Depositor EDS
R_{merge}	0.26	Depositor
R_{sym}	(Not available)	Depositor
$\langle I/\sigma(I) \rangle$ ¹	0.57 (at 2.91Å)	Xtrriage
Refinement program	PHENIX 1.17.1_3660	Depositor
R, R_{free}	0.239 , 0.281 0.239 , 0.281	Depositor DCC
R_{free} test set	1794 reflections (5.19%)	wwPDB-VP
Wilson B-factor (Å ²)	72.1	Xtrriage
Anisotropy	0.049	Xtrriage
Bulk solvent k_{sol} (e/Å ³), B_{sol} (Å ²)	(Not available) , (Not available)	EDS
L-test for twinning ²	$\langle L \rangle = 0.42$, $\langle L^2 \rangle = 0.25$	Xtrriage
Estimated twinning fraction	0.188 for h,-k,-l	Xtrriage
F_o, F_c correlation	0.92	EDS
Total number of atoms	6633	wwPDB-VP
Average B, all atoms (Å ²)	91.0	wwPDB-VP

Xtrriage's analysis on translational NCS is as follows: *The largest off-origin peak in the Patterson function is 2.89% of the height of the origin peak. No significant pseudotranslation is detected.*

¹Intensities estimated from amplitudes.

²Theoretical values of $\langle |L| \rangle$, $\langle L^2 \rangle$ for acentric reflections are 0.5, 0.333 respectively for untwinned datasets, and 0.375, 0.2 for perfectly twinned datasets.

5 Model quality

5.1 Standard geometry

Bond lengths and bond angles in the following residue types are not validated in this section: NAG, SO4

The Z score for a bond length (or angle) is the number of standard deviations the observed value is removed from the expected value. A bond length (or angle) with $|Z| > 5$ is considered an outlier worth inspection. RMSZ is the root-mean-square of all Z scores of the bond lengths (or angles).

Mol	Chain	Bond lengths		Bond angles	
		RMSZ	# Z >5	RMSZ	# Z >5
1	A	0.26	0/1597	0.43	0/2173
2	E	0.26	0/1637	0.48	0/2230
3	F	0.25	0/1732	0.44	0/2355
4	H	0.24	0/960	0.46	0/1303
5	L	0.27	0/850	0.46	0/1154
All	All	0.26	0/6776	0.45	0/9215

There are no bond length outliers.

There are no bond angle outliers.

There are no chirality outliers.

There are no planarity outliers.

5.2 Too-close contacts

In the following table, the Non-H and H(model) columns list the number of non-hydrogen atoms and hydrogen atoms in the chain respectively. The H(added) column lists the number of hydrogen atoms added and optimized by MolProbity. The Clashes column lists the number of clashes within the asymmetric unit, whereas Symm-Clashes lists symmetry-related clashes.

Mol	Chain	Non-H	H(model)	H(added)	Clashes	Symm-Clashes
1	A	1552	0	1468	8	0
2	E	1596	0	1574	19	0
3	F	1694	0	1643	18	0
4	H	941	0	915	14	0
5	L	830	0	808	10	0
6	A	14	0	13	0	0
7	L	5	0	0	3	0
8	A	1	0	0	0	0
All	All	6633	0	6421	65	0

The all-atom clashscore is defined as the number of clashes found per 1000 atoms (including hydrogen atoms). The all-atom clashscore for this structure is 5.

All (65) close contacts within the same asymmetric unit are listed below, sorted by their clash magnitude.

Atom-1	Atom-2	Interatomic distance (Å)	Clash overlap (Å)
4:H:2:VAL:HA	4:H:25:SER:O	1.85	0.77
2:E:2:MET:HB3	2:E:108:VAL:HG21	1.67	0.76
2:E:102:ILE:O	3:F:102:TYR:OH	2.11	0.69
2:E:91:THR:HG22	2:E:117:VAL:H	1.58	0.66
4:H:1:GLN:OE1	4:H:3:GLN:NE2	2.26	0.64
1:A:455:LEU:HD22	1:A:493:GLN:HB2	1.80	0.63
5:L:62:ARG:HD3	5:L:78:ARG:HG3	1.82	0.62
2:E:38:ARG:NH1	2:E:46:GLU:OE1	2.34	0.60
4:H:39:GLN:HB2	4:H:45:LEU:HD23	1.84	0.60
3:F:41:TRP:HB2	3:F:54:ILE:HG12	1.83	0.60
4:H:38:ARG:HB3	4:H:48:ILE:HD11	1.85	0.59
3:F:203:THR:HG22	3:F:210:PRO:HB3	1.84	0.59
5:L:31:ARG:NH1	7:L:301:SO4:O2	2.37	0.57
5:L:40:LYS:HG2	5:L:85:ALA:HB2	1.87	0.55
3:F:40:ALA:HB2	3:F:97:TYR:HE1	1.71	0.55
3:F:6:GLN:HE22	3:F:93:TYR:HA	1.73	0.54
2:E:91:THR:HA	2:E:115:VAL:O	2.08	0.53
3:F:45:LYS:NZ	3:F:87:GLU:O	2.41	0.53
4:H:13:LYS:O	4:H:16:THR:HG22	2.09	0.53
2:E:127:VAL:HG12	2:E:148:VAL:HG22	1.90	0.52
1:A:376:THR:HB	1:A:435:ALA:HB3	1.91	0.52
3:F:86:ALA:HA	3:F:112:ILE:HD11	1.91	0.52
4:H:3:GLN:OE1	4:H:25:SER:OG	2.25	0.52
1:A:458:LYS:H	1:A:458:LYS:HD2	1.75	0.51
4:H:12:LYS:HB3	4:H:16:THR:CG2	2.40	0.51
5:L:38:GLN:HB2	5:L:48:LEU:HD11	1.93	0.51
2:E:11:VAL:HG12	2:E:116:THR:HB	1.93	0.51
2:E:67:GLN:N	2:E:67:GLN:OE1	2.45	0.50
1:A:401:VAL:HG22	1:A:509:ARG:HG2	1.96	0.48
2:E:132:PRO:HD2	2:E:219:PRO:HA	1.95	0.48
5:L:25:ALA:O	5:L:70:THR:OG1	2.25	0.48
5:L:31:ARG:NH1	7:L:301:SO4:O3	2.47	0.48
3:F:25:SER:O	3:F:75:THR:OG1	2.31	0.47
5:L:21:LEU:HD22	5:L:103:THR:HG21	1.96	0.47
3:F:42:TYR:HE2	3:F:95:GLN:HG2	1.79	0.47
2:E:97:ALA:HB1	2:E:106:MET:HB3	1.96	0.47
3:F:111:GLU:OE1	3:F:179:TYR:OH	2.23	0.47

Continued on next page...

Continued from previous page...

Atom-1	Atom-2	Interatomic distance (Å)	Clash overlap (Å)
4:H:64:PHE:O	4:H:68:VAL:HG12	2.14	0.47
2:E:23:LYS:HB3	2:E:78:THR:HG22	1.97	0.46
3:F:119:PRO:HB3	3:F:145:PHE:HB3	1.98	0.46
4:H:50:TRP:CD1	4:H:59:ASN:HB2	2.52	0.45
3:F:67:ARG:NH1	3:F:88:ASP:OD1	2.49	0.44
1:A:455:LEU:HD21	4:H:55:SER:HA	2.00	0.44
2:E:52:TYR:CE2	2:E:54:GLY:HA3	2.52	0.43
1:A:394:ASN:HB2	1:A:516:GLU:HB2	1.99	0.43
2:E:132:PRO:HD3	2:E:144:LEU:HD13	2.00	0.43
2:E:125:PRO:HB3	2:E:151:TYR:HB3	1.99	0.43
3:F:42:TYR:CE2	3:F:95:GLN:HG2	2.53	0.43
2:E:33:TRP:CE3	2:E:52:TYR:HB2	2.53	0.43
4:H:86:LEU:HB3	4:H:121:VAL:HG21	2.01	0.43
3:F:42:TYR:CZ	3:F:52:LEU:HD13	2.54	0.43
5:L:38:GLN:O	5:L:46:ARG:N	2.37	0.42
1:A:347:PHE:HB3	1:A:401:VAL:HG23	2.02	0.42
2:E:68:VAL:HG12	2:E:83:TRP:NE1	2.35	0.41
3:F:44:GLN:HB3	3:F:50:PRO:HB3	2.02	0.41
5:L:6:GLN:NE2	5:L:89:CYS:SG	2.91	0.41
1:A:398:ASP:OD2	1:A:423:TYR:OH	2.33	0.41
3:F:11:LEU:HG	3:F:13:VAL:HG23	2.02	0.41
2:E:177:GLN:OE1	2:E:183:SER:HB2	2.21	0.41
4:H:40:ALA:HB3	4:H:43:GLN:HB2	2.03	0.40
5:L:31:ARG:NH1	7:L:301:SO4:S	2.95	0.40
4:H:50:TRP:NE1	4:H:59:ASN:HB2	2.36	0.40
2:E:105:PRO:HG3	3:F:55:TYR:HB2	2.02	0.40
2:E:105:PRO:HD3	3:F:97:TYR:CE2	2.56	0.40
4:H:83:LEU:HD22	4:H:86:LEU:HD23	2.04	0.40

There are no symmetry-related clashes.

5.3 Torsion angles [\(i\)](#)

5.3.1 Protein backbone [\(i\)](#)

In the following table, the Percentiles column shows the percent Ramachandran outliers of the chain as a percentile score with respect to all X-ray entries followed by that with respect to entries of similar resolution.

The Analysed column shows the number of residues for which the backbone conformation was analysed, and the total number of residues.

Mol	Chain	Analysed	Favoured	Allowed	Outliers	Percentiles	
1	A	194/206 (94%)	182 (94%)	12 (6%)	0	100	100
2	E	210/229 (92%)	202 (96%)	8 (4%)	0	100	100
3	F	216/221 (98%)	207 (96%)	9 (4%)	0	100	100
4	H	121/225 (54%)	117 (97%)	4 (3%)	0	100	100
5	L	106/215 (49%)	97 (92%)	8 (8%)	1 (1%)	17	48
All	All	847/1096 (77%)	805 (95%)	41 (5%)	1 (0%)	51	82

All (1) Ramachandran outliers are listed below:

Mol	Chain	Res	Type
5	L	96	PRO

5.3.2 Protein sidechains [i](#)

In the following table, the Percentiles column shows the percent sidechain outliers of the chain as a percentile score with respect to all X-ray entries followed by that with respect to entries of similar resolution.

The Analysed column shows the number of residues for which the sidechain conformation was analysed, and the total number of residues.

Mol	Chain	Analysed	Rotameric	Outliers	Percentiles	
1	A	168/177 (95%)	166 (99%)	2 (1%)	71	91
2	E	180/194 (93%)	180 (100%)	0	100	100
3	F	193/196 (98%)	192 (100%)	1 (0%)	88	96
4	H	103/193 (53%)	102 (99%)	1 (1%)	76	92
5	L	91/187 (49%)	91 (100%)	0	100	100
All	All	735/947 (78%)	731 (100%)	4 (0%)	88	96

All (4) residues with a non-rotameric sidechain are listed below:

Mol	Chain	Res	Type
1	A	377	PHE
1	A	458	LYS
3	F	31	TYR
4	H	72	ARG

Sometimes sidechains can be flipped to improve hydrogen bonding and reduce clashes. All (1) such sidechains are listed below:

Mol	Chain	Res	Type
1	A	394	ASN

5.3.3 RNA [i](#)

There are no RNA molecules in this entry.

5.4 Non-standard residues in protein, DNA, RNA chains [i](#)

There are no non-standard protein/DNA/RNA residues in this entry.

5.5 Carbohydrates [i](#)

There are no monosaccharides in this entry.

5.6 Ligand geometry [i](#)

2 ligands are modelled in this entry.

In the following table, the Counts columns list the number of bonds (or angles) for which Mogul statistics could be retrieved, the number of bonds (or angles) that are observed in the model and the number of bonds (or angles) that are defined in the Chemical Component Dictionary. The Link column lists molecule types, if any, to which the group is linked. The Z score for a bond length (or angle) is the number of standard deviations the observed value is removed from the expected value. A bond length (or angle) with $|Z| > 2$ is considered an outlier worth inspection. RMSZ is the root-mean-square of all Z scores of the bond lengths (or angles).

Mol	Type	Chain	Res	Link	Bond lengths			Bond angles		
					Counts	RMSZ	$\# Z > 2$	Counts	RMSZ	$\# Z > 2$
7	SO4	L	301	-	4,4,4	0.13	0	6,6,6	0.07	0
6	NAG	A	601	1	14,14,15	0.23	0	17,19,21	0.40	0

In the following table, the Chirals column lists the number of chiral outliers, the number of chiral centers analysed, the number of these observed in the model and the number defined in the Chemical Component Dictionary. Similar counts are reported in the Torsion and Rings columns. '-' means no outliers of that kind were identified.

Mol	Type	Chain	Res	Link	Chirals	Torsions	Rings
6	NAG	A	601	1	-	0/6/23/26	0/1/1/1

There are no bond length outliers.

There are no bond angle outliers.

There are no chirality outliers.

There are no torsion outliers.

There are no ring outliers.

1 monomer is involved in 3 short contacts:

Mol	Chain	Res	Type	Clashes	Symm-Clashes
7	L	301	SO4	3	0

5.7 Other polymers [i](#)

There are no such residues in this entry.

5.8 Polymer linkage issues [i](#)

There are no chain breaks in this entry.

6 Fit of model and data

6.1 Protein, DNA and RNA chains

In the following table, the column labelled ‘#RSRZ > 2’ contains the number (and percentage) of RSRZ outliers, followed by percent RSRZ outliers for the chain as percentile scores relative to all X-ray entries and entries of similar resolution. The OWAB column contains the minimum, median, 95th percentile and maximum values of the occupancy-weighted average B-factor per residue. The column labelled ‘Q < 0.9’ lists the number of (and percentage) of residues with an average occupancy less than 0.9.

Mol	Chain	Analysed	<RSRZ>	#RSRZ>2	OWAB(Å ²)	Q<0.9
1	A	196/206 (95%)	0.34	7 (3%) 42 37	49, 84, 143, 181	0
2	E	207/229 (90%)	0.35	7 (3%) 45 40	54, 79, 119, 177	0
3	F	214/221 (96%)	0.20	1 (0%) 91 91	53, 80, 114, 141	0
4	H	123/225 (54%)	0.25	6 (4%) 29 26	56, 96, 139, 173	0
5	L	108/215 (50%)	0.73	14 (12%) 3 2	77, 116, 174, 208	0
All	All	848/1096 (77%)	0.34	35 (4%) 37 32	49, 86, 145, 208	0

All (35) RSRZ outliers are listed below:

Mol	Chain	Res	Type	RSRZ
1	A	518	LEU	5.8
5	L	107	ILE	5.7
5	L	13	LEU	5.6
5	L	12	SER	4.7
2	E	43	LYS	4.6
2	E	221	SER	3.9
5	L	83	ASP	3.9
5	L	41	PRO	3.8
4	H	42	GLY	3.3
5	L	21	LEU	3.3
4	H	41	ARG	3.0
5	L	1	GLU	2.9
5	L	27	GLN	2.9
4	H	89	GLU	2.9
5	L	106	GLU	2.9
4	H	87	ARG	2.8
1	A	519	HIS	2.4
1	A	527	PRO	2.4
5	L	108	LYS	2.4
1	A	497	PHE	2.3

Continued on next page...

Continued from previous page...

Mol	Chain	Res	Type	RSRZ
2	E	144	LEU	2.3
2	E	202	CYS	2.3
3	F	168	SER	2.3
5	L	95	SER	2.3
2	E	191	PRO	2.3
5	L	20	THR	2.2
2	E	220	LYS	2.2
5	L	19	ALA	2.2
1	A	445	VAL	2.2
2	E	107	ASP	2.2
4	H	118	MET	2.2
1	A	517	LEU	2.1
4	H	66	GLU	2.1
1	A	528	LYS	2.0
5	L	15	PRO	2.0

6.2 Non-standard residues in protein, DNA, RNA chains [i](#)

There are no non-standard protein/DNA/RNA residues in this entry.

6.3 Carbohydrates [i](#)

There are no monosaccharides in this entry.

6.4 Ligands [i](#)

In the following table, the Atoms column lists the number of modelled atoms in the group and the number defined in the chemical component dictionary. The B-factors column lists the minimum, median, 95th percentile and maximum values of B factors of atoms in the group. The column labelled 'Q< 0.9' lists the number of atoms with occupancy less than 0.9.

Mol	Type	Chain	Res	Atoms	RSCC	RSR	B-factors(Å ²)	Q<0.9
6	NAG	A	601	14/15	0.76	0.32	108,119,130,130	0
7	SO4	L	301	5/5	0.97	0.12	94,96,103,109	0

6.5 Other polymers [i](#)

There are no such residues in this entry.