



# wwPDB X-ray Structure Validation Summary Report ⓘ

Jan 20, 2024 – 01:54 pm GMT

PDB ID : 7QF9  
Title : Crystal structure of PDE6D bound to HRas peptide  
Authors : Yelland, T.; Ismail, I.  
Deposited on : 2021-12-05  
Resolution : 1.95 Å(reported)

This is a wwPDB X-ray Structure Validation Summary Report for a publicly released PDB entry.

We welcome your comments at [validation@mail.wwpdb.org](mailto:validation@mail.wwpdb.org)

A user guide is available at

<https://www.wwpdb.org/validation/2017/XrayValidationReportHelp>

with specific help available everywhere you see the ⓘ symbol.

The types of validation reports are described at

<http://www.wwpdb.org/validation/2017/FAQs#types>.

---

The following versions of software and data (see [references ⓘ](#)) were used in the production of this report:

MolProbity : 4.02b-467  
Mogul : 1.8.4, CSD as541be (2020)  
Xtriage (Phenix) : 1.13  
EDS : 2.36  
Percentile statistics : 20191225.v01 (using entries in the PDB archive December 25th 2019)  
Refmac : 5.8.0158  
CCP4 : 7.0.044 (Gargrove)  
Ideal geometry (proteins) : Engh & Huber (2001)  
Ideal geometry (DNA, RNA) : Parkinson et al. (1996)  
Validation Pipeline (wwPDB-VP) : 2.36

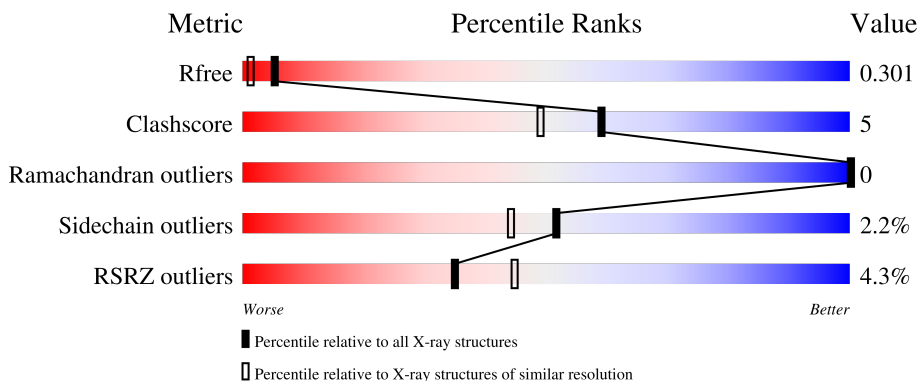
# 1 Overall quality at a glance

The following experimental techniques were used to determine the structure:

*X-RAY DIFFRACTION*

The reported resolution of this entry is 1.95 Å.

Percentile scores (ranging between 0-100) for global validation metrics of the entry are shown in the following graphic. The table shows the number of entries on which the scores are based.



Metric	Whole archive (#Entries)	Similar resolution (#Entries, resolution range(Å))
$R_{free}$	130704	2580 (1.96-1.96)
Clashscore	141614	2705 (1.96-1.96)
Ramachandran outliers	138981	2678 (1.96-1.96)
Sidechain outliers	138945	2678 (1.96-1.96)
RSRZ outliers	127900	2539 (1.96-1.96)

The table below summarises the geometric issues observed across the polymeric chains and their fit to the electron density. The red, orange, yellow and green segments of the lower bar indicate the fraction of residues that contain outliers for  $\geq 3$ , 2, 1 and 0 types of geometric quality criteria respectively. A grey segment represents the fraction of residues that are not modelled. The numeric value for each fraction is indicated below the corresponding segment, with a dot representing fractions  $\leq 5\%$ . The upper red bar (where present) indicates the fraction of residues that have poor fit to the electron density. The numeric value is given above the bar.

Mol	Chain	Length	Quality of chain
1	AAA	149	 2% 87% 11% ..
1	BBB	149	 6% 88% 11% .
2	EEE	10	 10% 50% 10% 10% 30%

## 2 Entry composition [i](#)

There are 6 unique types of molecules in this entry. The entry contains 2705 atoms, of which 0 are hydrogens and 0 are deuteriums.

In the tables below, the ZeroOcc column contains the number of atoms modelled with zero occupancy, the AltConf column contains the number of residues with at least one atom in alternate conformation and the Trace column contains the number of residues modelled with at most 2 atoms.

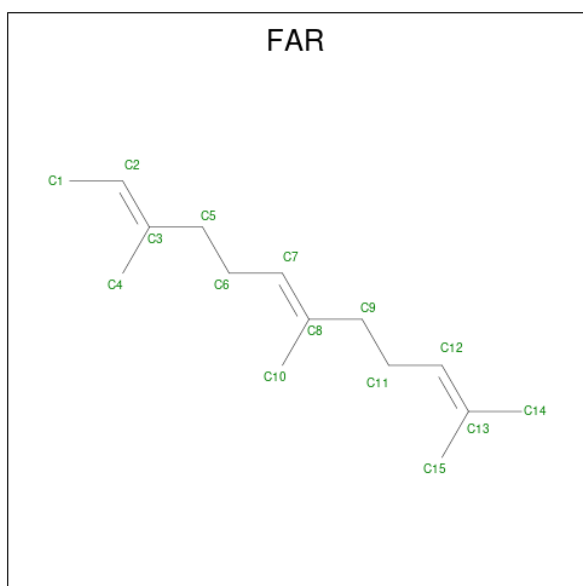
- Molecule 1 is a protein called Retinal rod rhodopsin-sensitive cGMP 3',5'-cyclic phosphodiesterase subunit delta.

Mol	Chain	Residues	Atoms					ZeroOcc	AltConf	Trace
			Total	C	N	O	S			
1	BBB	149	Total 1258	C 809	N 212	O 231	S 6	0	6	0
1	AAA	147	Total 1205	C 774	N 201	O 224	S 6	0	1	0

- Molecule 2 is a protein called HRas peptide.

Mol	Chain	Residues	Atoms					ZeroOcc	AltConf	Trace
			Total	C	N	O	S			
2	EEE	7	Total 47	C 26	N 8	O 9	S 4	0	0	0

- Molecule 3 is FARNESYL (three-letter code: FAR) (formula: C<sub>15</sub>H<sub>26</sub>).



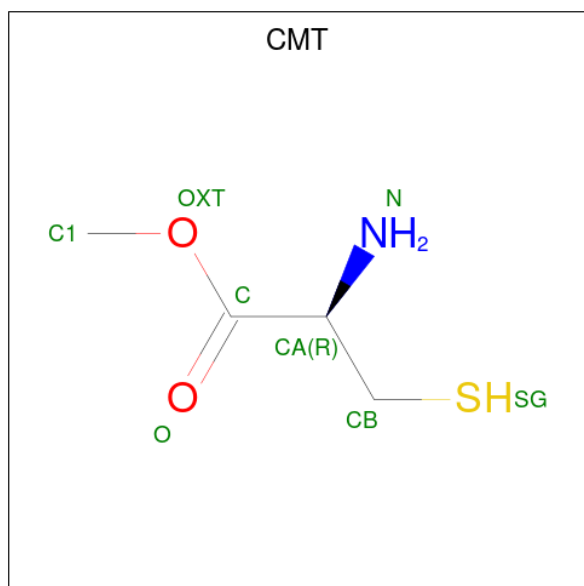
Mol	Chain	Residues	Atoms		ZeroOcc	AltConf
3	BBB	1	Total 15	C 15	0	0

*Continued on next page...*

Continued from previous page...

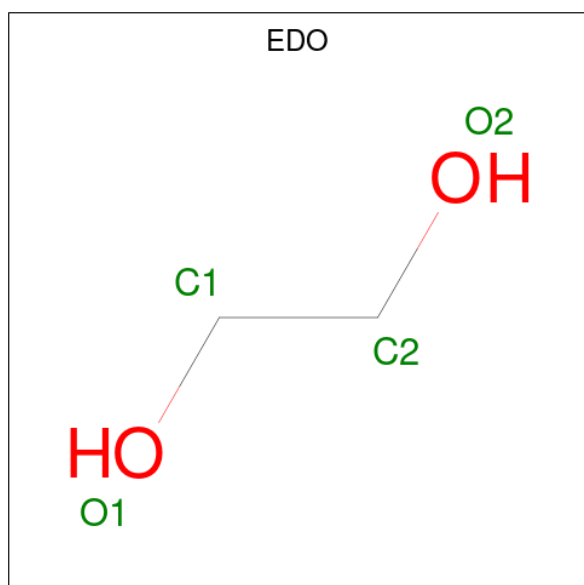
Mol	Chain	Residues	Atoms	ZeroOcc	AltConf
3	EEE	1	Total C 15 15	0	0

- Molecule 4 is O-METHYLCYSTEINE (three-letter code: CMT) (formula:  $C_4H_9NO_2S$ ).



Mol	Chain	Residues	Atoms	ZeroOcc	AltConf
4	BBB	1	Total C N O S 8 4 1 2 1	0	0

- Molecule 5 is 1,2-ETHANEDIOL (three-letter code: EDO) (formula:  $C_2H_6O_2$ ).



Mol	Chain	Residues	Atoms	ZeroOcc	AltConf
5	BBB	1	Total C O 4 2 2	0	0
5	BBB	1	Total C O 4 2 2	0	0
5	BBB	1	Total C O 4 2 2	0	0
5	AAA	1	Total C O 4 2 2	0	0
5	AAA	1	Total C O 4 2 2	0	0


- Molecule 6 is water.

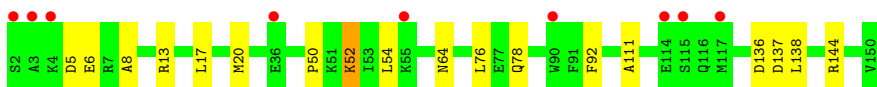
Mol	Chain	Residues	Atoms	ZeroOcc	AltConf
6	BBB	72	Total O 72 72	0	0
6	AAA	64	Total O 64 64	0	0
6	EEE	1	Total O 1 1	0	0

### 3 Residue-property plots [i](#)


These plots are drawn for all protein, RNA, DNA and oligosaccharide chains in the entry. The first graphic for a chain summarises the proportions of the various outlier classes displayed in the second graphic. The second graphic shows the sequence view annotated by issues in geometry and electron density. Residues are color-coded according to the number of geometric quality criteria for which they contain at least one outlier: green = 0, yellow = 1, orange = 2 and red = 3 or more. A red dot above a residue indicates a poor fit to the electron density ( $RSRZ > 2$ ). Stretches of 2 or more consecutive residues without any outlier are shown as a green connector. Residues present in the sample, but not in the model, are shown in grey.

- Molecule 1: Retinal rod rhodopsin-sensitive cGMP 3',5'-cyclic phosphodiesterase subunit delta

Chain BBB: 



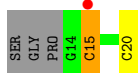
- Molecule 1: Retinal rod rhodopsin-sensitive cGMP 3',5'-cyclic phosphodiesterase subunit delta

Chain AAA: 



- Molecule 2: HRas peptide

Chain EEE: 



## 4 Data and refinement statistics

Property	Value	Source
Space group	P 21 21 21	Depositor
Cell constants a, b, c, $\alpha$ , $\beta$ , $\gamma$	34.63Å 82.79Å 112.47Å 90.00° 90.00° 90.00°	Depositor
Resolution (Å)	56.23 – 1.95 56.23 – 1.95	Depositor EDS
% Data completeness (in resolution range)	99.8 (56.23-1.95) 99.7 (56.23-1.95)	Depositor EDS
$R_{merge}$	(Not available)	Depositor
$R_{sym}$	(Not available)	Depositor
$\langle I/\sigma(I) \rangle$ <sup>1</sup>	2.00 (at 1.95Å)	Xtrriage
Refinement program	REFMAC 5.8.0258	Depositor
R, $R_{free}$	0.230 , 0.299 0.234 , 0.301	Depositor DCC
$R_{free}$ test set	1197 reflections (4.92%)	wwPDB-VP
Wilson B-factor (Å <sup>2</sup> )	38.1	Xtrriage
Anisotropy	0.043	Xtrriage
Bulk solvent $k_{sol}$ (e/Å <sup>3</sup> ), $B_{sol}$ (Å <sup>2</sup> )	0.35 , 45.2	EDS
L-test for twinning <sup>2</sup>	$\langle  L  \rangle = 0.50$ , $\langle L^2 \rangle = 0.33$	Xtrriage
Estimated twinning fraction	No twinning to report.	Xtrriage
$F_o, F_c$ correlation	0.95	EDS
Total number of atoms	2705	wwPDB-VP
Average B, all atoms (Å <sup>2</sup> )	44.0	wwPDB-VP

Xtrriage's analysis on translational NCS is as follows: *The largest off-origin peak in the Patterson function is 8.03% of the height of the origin peak. No significant pseudotranslation is detected.*

<sup>1</sup>Intensities estimated from amplitudes.

<sup>2</sup>Theoretical values of  $\langle |L| \rangle$ ,  $\langle L^2 \rangle$  for acentric reflections are 0.5, 0.333 respectively for untwinned datasets, and 0.375, 0.2 for perfectly twinned datasets.

## 5 Model quality [i](#)

### 5.1 Standard geometry [i](#)

Bond lengths and bond angles in the following residue types are not validated in this section: FAR, CMT, EDO

The Z score for a bond length (or angle) is the number of standard deviations the observed value is removed from the expected value. A bond length (or angle) with  $|Z| > 5$  is considered an outlier worth inspection. RMSZ is the root-mean-square of all Z scores of the bond lengths (or angles).

Mol	Chain	Bond lengths		Bond angles	
		RMSZ	# Z  >5	RMSZ	# Z  >5
1	AAA	0.61	0/1231	0.66	0/1660
1	BBB	0.62	0/1289	0.67	0/1743
2	EEE	0.75	0/38	0.73	0/47
All	All	0.62	0/2558	0.66	0/3450

There are no bond length outliers.

There are no bond angle outliers.

There are no chirality outliers.

There are no planarity outliers.

### 5.2 Too-close contacts [i](#)

In the following table, the Non-H and H(model) columns list the number of non-hydrogen atoms and hydrogen atoms in the chain respectively. The H(added) column lists the number of hydrogen atoms added and optimized by MolProbity. The Clashes column lists the number of clashes within the asymmetric unit, whereas Symm-Clashes lists symmetry-related clashes.

Mol	Chain	Non-H	H(model)	H(added)	Clashes	Symm-Clashes
1	AAA	1205	0	1190	12	0
1	BBB	1258	0	1238	11	0
2	EEE	47	0	46	1	0
3	BBB	15	0	24	0	0
3	EEE	15	0	24	2	0
4	BBB	8	0	8	2	0
5	AAA	8	0	12	0	0
5	BBB	12	0	18	0	0
6	AAA	64	0	0	1	0
6	BBB	72	0	0	2	0

*Continued on next page...*



Continued from previous page...

Mol	Chain	Non-H	H(model)	H(added)	Clashes	Symm-Clashes
6	EEE	1	0	0	0	0
All	All	2705	0	2560	24	0

The all-atom clashscore is defined as the number of clashes found per 1000 atoms (including hydrogen atoms). The all-atom clashscore for this structure is 5.

The worst 5 of 24 close contacts within the same asymmetric unit are listed below, sorted by their clash magnitude.

Atom-1	Atom-2	Interatomic distance (Å)	Clash overlap (Å)
1:AAA:50:PRO:HB2	1:AAA:52:LYS:HG2	1.67	0.74
1:AAA:17:LEU:HG	1:AAA:63:LEU:HD11	1.80	0.62
1:AAA:147:LEU:HD21	3:EEE:201:FAR:H52	1.84	0.60
1:BBB:6[B]:GLU:OE2	1:BBB:13:ARG:NH1	2.39	0.56
1:BBB:76[A]:LEU:HD11	1:BBB:92:PHE:HD2	1.72	0.54

There are no symmetry-related clashes.

## 5.3 Torsion angles [i](#)

### 5.3.1 Protein backbone [i](#)

In the following table, the Percentiles column shows the percent Ramachandran outliers of the chain as a percentile score with respect to all X-ray entries followed by that with respect to entries of similar resolution.

The Analysed column shows the number of residues for which the backbone conformation was analysed, and the total number of residues.

Mol	Chain	Analysed	Favoured	Allowed	Outliers	Percentiles	
1	AAA	146/149 (98%)	144 (99%)	2 (1%)	0	100	100
1	BBB	153/149 (103%)	149 (97%)	4 (3%)	0	100	100
2	EEE	5/10 (50%)	5 (100%)	0	0	100	100
All	All	304/308 (99%)	298 (98%)	6 (2%)	0	100	100

There are no Ramachandran outliers to report.

### 5.3.2 Protein sidechains [i](#)

In the following table, the Percentiles column shows the percent sidechain outliers of the chain as a percentile score with respect to all X-ray entries followed by that with respect to entries of similar resolution.

The Analysed column shows the number of residues for which the sidechain conformation was analysed, and the total number of residues.

Mol	Chain	Analysed	Rotameric	Outliers	Percentiles	
1	AAA	132/134 (98%)	130 (98%)	2 (2%)	65	60
1	BBB	137/134 (102%)	134 (98%)	3 (2%)	52	44
2	EEE	5/7 (71%)	4 (80%)	1 (20%)	1	0
All	All	274/275 (100%)	268 (98%)	6 (2%)	52	44

5 of 6 residues with a non-rotameric sidechain are listed below:

Mol	Chain	Res	Type
1	AAA	5	ASP
1	AAA	52	LYS
2	EEE	15	CYS
1	BBB	20	MET
1	BBB	5	ASP

Sometimes sidechains can be flipped to improve hydrogen bonding and reduce clashes. There are no such sidechains identified.

### 5.3.3 RNA [i](#)

There are no RNA molecules in this entry.

## 5.4 Non-standard residues in protein, DNA, RNA chains [i](#)

1 non-standard protein/DNA/RNA residue is modelled in this entry.

In the following table, the Counts columns list the number of bonds (or angles) for which Mogul statistics could be retrieved, the number of bonds (or angles) that are observed in the model and the number of bonds (or angles) that are defined in the Chemical Component Dictionary. The Link column lists molecule types, if any, to which the group is linked. The Z score for a bond length (or angle) is the number of standard deviations the observed value is removed from the expected value. A bond length (or angle) with  $|Z| > 2$  is considered an outlier worth inspection. RMSZ is the root-mean-square of all Z scores of the bond lengths (or angles).

Mol	Type	Chain	Res	Link	Bond lengths			Bond angles		
					Counts	RMSZ	# Z  > 2	Counts	RMSZ	# Z  > 2
2	CMT	EEE	20	2,3	7,7,7	1.99	1 (14%)	6,8,8	1.37	0

In the following table, the Chirals column lists the number of chiral outliers, the number of chiral centers analysed, the number of these observed in the model and the number defined in the Chemical Component Dictionary. Similar counts are reported in the Torsion and Rings columns. '-' means no outliers of that kind were identified.

Mol	Type	Chain	Res	Link	Chirals	Torsions	Rings
2	CMT	EEE	20	2,3	-	2/8/8/8	-

All (1) bond length outliers are listed below:

Mol	Chain	Res	Type	Atoms	Z	Observed(Å)	Ideal(Å)
2	EEE	20	CMT	OXT-C	5.05	1.45	1.33

There are no bond angle outliers.

There are no chirality outliers.

All (2) torsion outliers are listed below:

Mol	Chain	Res	Type	Atoms
2	EEE	20	CMT	N-CA-CB-SG
2	EEE	20	CMT	O-C-CA-N

There are no ring outliers.

No monomer is involved in short contacts.

## 5.5 Carbohydrates [i](#)

There are no monosaccharides in this entry.

## 5.6 Ligand geometry [i](#)

8 ligands are modelled in this entry.

In the following table, the Counts columns list the number of bonds (or angles) for which Mogul statistics could be retrieved, the number of bonds (or angles) that are observed in the model and the number of bonds (or angles) that are defined in the Chemical Component Dictionary. The Link column lists molecule types, if any, to which the group is linked. The Z score for a bond length (or angle) is the number of standard deviations the observed value is removed from the

expected value. A bond length (or angle) with  $|Z| > 2$  is considered an outlier worth inspection. RMSZ is the root-mean-square of all Z scores of the bond lengths (or angles).

Mol	Type	Chain	Res	Link	Bond lengths			Bond angles		
					Counts	RMSZ	$\# Z  > 2$	Counts	RMSZ	$\# Z  > 2$
5	EDO	BBB	203	-	3,3,3	0.05	0	2,2,2	0.04	0
3	FAR	EEE	201	2	14,14,14	0.23	0	16,16,16	0.46	0
4	CMT	BBB	202	3	7,7,7	2.00	1 (14%)	6,8,8	0.80	0
5	EDO	AAA	202	-	3,3,3	0.07	0	2,2,2	0.08	0
3	FAR	BBB	201	4	14,14,14	0.24	0	16,16,16	0.17	0
5	EDO	AAA	201	-	3,3,3	0.05	0	2,2,2	0.09	0
5	EDO	BBB	205	-	3,3,3	0.06	0	2,2,2	0.06	0
5	EDO	BBB	204	-	3,3,3	0.06	0	2,2,2	0.06	0

In the following table, the Chirals column lists the number of chiral outliers, the number of chiral centers analysed, the number of these observed in the model and the number defined in the Chemical Component Dictionary. Similar counts are reported in the Torsion and Rings columns. '-' means no outliers of that kind were identified.

Mol	Type	Chain	Res	Link	Chirals	Torsions	Rings
5	EDO	BBB	203	-	-	0/1/1/1	-
3	FAR	EEE	201	2	-	5/14/14/14	-
4	CMT	BBB	202	3	-	5/8/8/8	-
5	EDO	AAA	202	-	-	0/1/1/1	-
3	FAR	BBB	201	4	-	6/14/14/14	-
5	EDO	AAA	201	-	-	0/1/1/1	-
5	EDO	BBB	205	-	-	0/1/1/1	-
5	EDO	BBB	204	-	-	1/1/1/1	-

All (1) bond length outliers are listed below:

Mol	Chain	Res	Type	Atoms	Z	Observed(Å)	Ideal(Å)
4	BBB	202	CMT	OXT-C	5.10	1.45	1.33

There are no bond angle outliers.

There are no chirality outliers.

5 of 17 torsion outliers are listed below:

Mol	Chain	Res	Type	Atoms
3	EEE	201	FAR	C7-C8-C9-C11
3	EEE	201	FAR	C10-C8-C9-C11
4	BBB	202	CMT	O-C-CA-N

*Continued on next page...*

*Continued from previous page...*

Mol	Chain	Res	Type	Atoms
4	BBB	202	CMT	OXT-C-CA-N
4	BBB	202	CMT	CA-C-OXT-C1

There are no ring outliers.

2 monomers are involved in 4 short contacts:

Mol	Chain	Res	Type	Clashes	Symm-Clashes
3	EEE	201	FAR	2	0
4	BBB	202	CMT	2	0

## 5.7 Other polymers [i](#)

There are no such residues in this entry.

## 5.8 Polymer linkage issues [i](#)

There are no chain breaks in this entry.

## 6 Fit of model and data [i](#)

### 6.1 Protein, DNA and RNA chains [i](#)

In the following table, the column labelled ‘#RSRZ > 2’ contains the number (and percentage) of RSRZ outliers, followed by percent RSRZ outliers for the chain as percentile scores relative to all X-ray entries and entries of similar resolution. The OWAB column contains the minimum, median, 95<sup>th</sup> percentile and maximum values of the occupancy-weighted average B-factor per residue. The column labelled ‘Q < 0.9’ lists the number of (and percentage) of residues with an average occupancy less than 0.9.

Mol	Chain	Analysed	<RSRZ>	#RSRZ>2	OWAB(Å <sup>2</sup> )	Q<0.9
1	AAA	147/149 (98%)	0.27	3 (2%) 65 73	28, 42, 65, 92	0
1	BBB	149/149 (100%)	0.36	9 (6%) 21 30	26, 41, 70, 95	0
2	EEE	6/10 (60%)	1.01	1 (16%) 1 2	43, 50, 83, 96	0
All	All	302/308 (98%)	0.33	13 (4%) 35 45	26, 42, 76, 96	0

The worst 5 of 13 RSRZ outliers are listed below:

Mol	Chain	Res	Type	RSRZ
1	BBB	114	GLU	3.8
1	BBB	3	ALA	3.5
2	EEE	15	CYS	3.1
1	BBB	115	SER	3.1
1	AAA	113	PRO	2.6

### 6.2 Non-standard residues in protein, DNA, RNA chains [i](#)

In the following table, the Atoms column lists the number of modelled atoms in the group and the number defined in the chemical component dictionary. The B-factors column lists the minimum, median, 95<sup>th</sup> percentile and maximum values of B factors of atoms in the group. The column labelled ‘Q < 0.9’ lists the number of atoms with occupancy less than 0.9.

Mol	Type	Chain	Res	Atoms	RSCC	RSR	B-factors(Å <sup>2</sup> )	Q<0.9
2	CMT	EEE	20	8/8	0.94	0.10	30,36,36,43	0

### 6.3 Carbohydrates [i](#)

There are no monosaccharides in this entry.

## 6.4 Ligands [i](#)

In the following table, the Atoms column lists the number of modelled atoms in the group and the number defined in the chemical component dictionary. The B-factors column lists the minimum, median, 95<sup>th</sup> percentile and maximum values of B factors of atoms in the group. The column labelled 'Q<0.9' lists the number of atoms with occupancy less than 0.9.

Mol	Type	Chain	Res	Atoms	RSCC	RSR	B-factors(Å <sup>2</sup> )	Q<0.9
4	CMT	BBB	202	8/8	0.73	0.20	78,85,92,95	0
3	FAR	EEE	201	15/15	0.79	0.24	36,44,55,63	0
5	EDO	BBB	204	4/4	0.80	0.32	27,28,31,33	4
5	EDO	AAA	202	4/4	0.84	0.18	40,41,44,44	0
3	FAR	BBB	201	15/15	0.89	0.22	55,68,79,83	0
5	EDO	BBB	205	4/4	0.91	0.13	38,44,46,51	0
5	EDO	BBB	203	4/4	0.92	0.10	32,34,38,38	0
5	EDO	AAA	201	4/4	0.94	0.14	31,31,31,34	0

## 6.5 Other polymers [i](#)

There are no such residues in this entry.