



Full wwPDB EM Validation Report ⓘ

Jan 29, 2022 – 06:12 am GMT

PDB ID : 7QJ0
EMDB ID : EMD-14005
Title : Structure of recombinant human gamma-Tubulin Ring Complex 6-spoked assembly intermediate (spokes 7-12)
Authors : Zupa, E.; Pfeffer, S.
Deposited on : 2021-12-16
Resolution : 5.32 Å (reported)
Based on initial models : 7AS4, 6X0U, 6L81, 6V6S

This is a Full wwPDB EM Validation Report for a publicly released PDB entry.

We welcome your comments at validation@mail.wwpdb.org

A user guide is available at

<https://www.wwpdb.org/validation/2017/EMValidationReportHelp>

with specific help available everywhere you see the ⓘ symbol.

The following versions of software and data (see [references ⓘ](#)) were used in the production of this report:

EMDB validation analysis : 0.0.0.dev97
MolProbity : 4.02b-467
Percentile statistics : 20191225.v01 (using entries in the PDB archive December 25th 2019)
Ideal geometry (proteins) : Engh & Huber (2001)
Ideal geometry (DNA, RNA) : Parkinson et al. (1996)
Validation Pipeline (wwPDB-VP) : 2.26

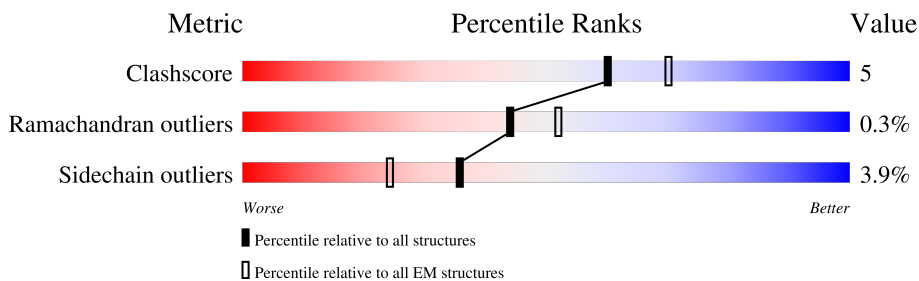
1 Overall quality at a glance

The following experimental techniques were used to determine the structure:

ELECTRON MICROSCOPY

The reported resolution of this entry is 5.32 Å.

Percentile scores (ranging between 0-100) for global validation metrics of the entry are shown in the following graphic. The table shows the number of entries on which the scores are based.









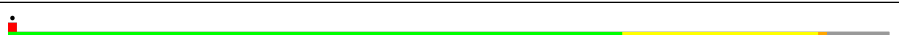
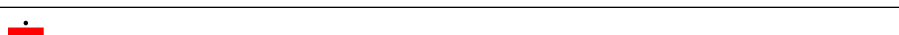
Metric	Whole archive (#Entries)	EM structures (#Entries)
Clashscore	158937	4297
Ramachandran outliers	154571	4023
Sidechain outliers	154315	3826

The table below summarises the geometric issues observed across the polymeric chains and their fit to the map. The red, orange, yellow and green segments of the bar indicate the fraction of residues that contain outliers for ≥ 3 , 2, 1 and 0 types of geometric quality criteria respectively. A grey segment represents the fraction of residues that are not modelled. The numeric value for each fraction is indicated below the corresponding segment, with a dot representing fractions $\leq 5\%$. The upper red bar (where present) indicates the fraction of residues that have poor fit to the EM map (all-atom inclusion $< 40\%$). The numeric value is given above the bar.

Mol	Chain	Length	Quality of chain
1	b	82	
1	m	82	
2	H	907	
2	a	907	
3	J	1024	
3	l	1024	
4	G	902	
5	I	667	

Continued on next page...

Continued from previous page...

Mol	Chain	Length	Quality of chain
5	K	667	
6	L	1819	
7	U	451	
7	V	451	
7	W	451	
7	X	451	
7	Y	451	
7	Z	451	

2 Entry composition [i](#)

There are 7 unique types of molecules in this entry. The entry contains 50927 atoms, of which 0 are hydrogens and 0 are deuteriums.

In the tables below, the AltConf column contains the number of residues with at least one atom in alternate conformation and the Trace column contains the number of residues modelled with at most 2 atoms.

- Molecule 1 is a protein called Mitotic-spindle organizing protein 1.

Mol	Chain	Residues	Atoms					AltConf	Trace
			Total	C	N	O	S		
1	m	65	Total	C	N	O	S	0	0
			484	299	85	96	4		
1	b	65	Total	C	N	O	S	0	0
			484	299	85	96	4		

- Molecule 2 is a protein called Gamma-tubulin complex component 3.

Mol	Chain	Residues	Atoms					AltConf	Trace
			Total	C	N	O	S		
2	a	116	Total	C	N	O	S	0	0
			933	591	171	169	2		
2	H	594	Total	C	N	O	S	0	0
			4907	3130	864	888	25		

- Molecule 3 is a protein called Gamma-tubulin complex component 5.

Mol	Chain	Residues	Atoms					AltConf	Trace
			Total	C	N	O	S		
3	l	108	Total	C	N	O	S	0	0
			875	556	151	167	1		
3	J	534	Total	C	N	O	S	0	0
			4429	2893	737	776	23		

- Molecule 4 is a protein called Gamma-tubulin complex component 2.

Mol	Chain	Residues	Atoms					AltConf	Trace
			Total	C	N	O	S		
4	G	636	Total	C	N	O	S	0	0
			5186	3342	871	940	33		

- Molecule 5 is a protein called Gamma-tubulin complex component 4.

Mol	Chain	Residues	Atoms					AltConf	Trace
			Total	C	N	O	S		
5	I	521	Total	C	N	O	S	0	0
			4225	2737	720	750	18		

Continued on next page...

Continued from previous page...

Mol	Chain	Residues	Atoms					AltConf	Trace
			Total	C	N	O	S		
5	K	562	4579	2964	781	816	18	0	0

- Molecule 6 is a protein called Gamma-tubulin complex component 6.

Mol	Chain	Residues	Atoms					AltConf	Trace
			Total	C	N	O	S		
6	L	566	4587	3000	773	789	25	0	0

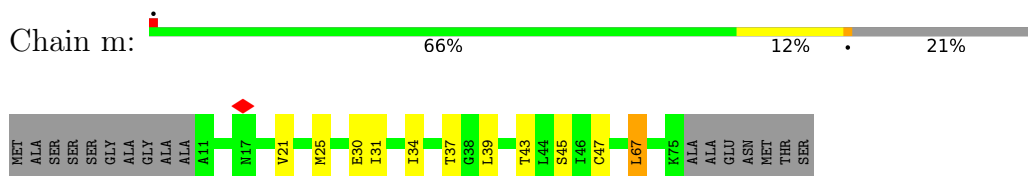
- Molecule 7 is a protein called Tubulin gamma-1 chain.

Mol	Chain	Residues	Atoms					AltConf	Trace
			Total	C	N	O	S		
7	U	420	3373	2134	586	638	15	0	0
7	V	420	3373	2134	586	638	15	0	0
7	W	420	3373	2134	586	638	15	0	0
7	X	420	3373	2134	586	638	15	0	0
7	Y	420	3373	2134	586	638	15	0	0
7	Z	420	3373	2134	586	638	15	0	0

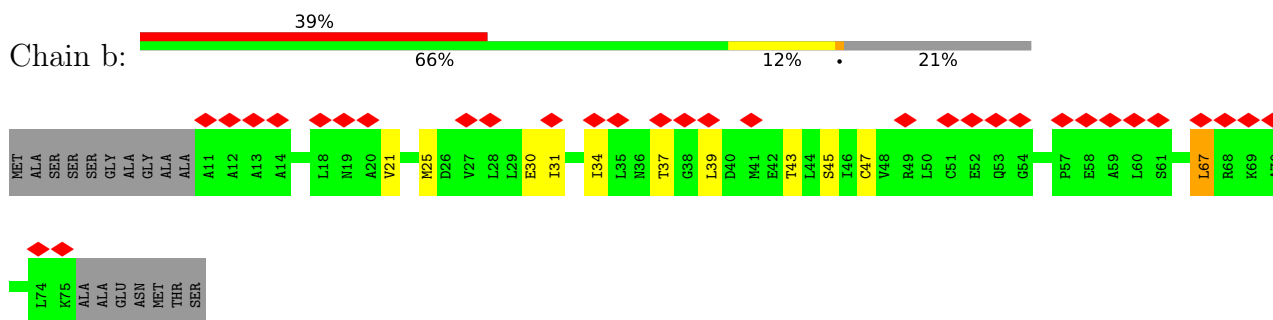
3 Residue-property plots [i](#)

These plots are drawn for all protein, RNA, DNA and oligosaccharide chains in the entry. The first graphic for a chain summarises the proportions of the various outlier classes displayed in the second graphic. The second graphic shows the sequence view annotated by issues in geometry and atom inclusion in map density. Residues are color-coded according to the number of geometric quality criteria for which they contain at least one outlier: green = 0, yellow = 1, orange = 2 and red = 3 or more. A red diamond above a residue indicates a poor fit to the EM map for this residue (all-atom inclusion < 40%). Stretches of 2 or more consecutive residues without any outlier are shown as a green connector. Residues present in the sample, but not in the model, are shown in grey.

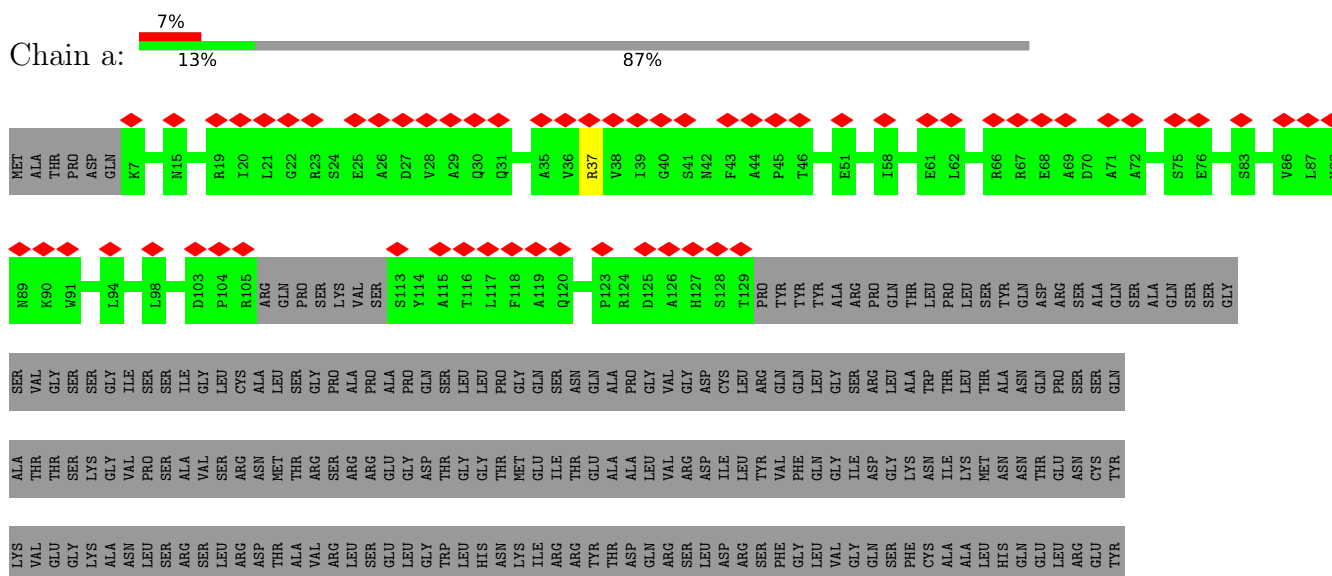
- Molecule 1: Mitotic-spindle organizing protein 1

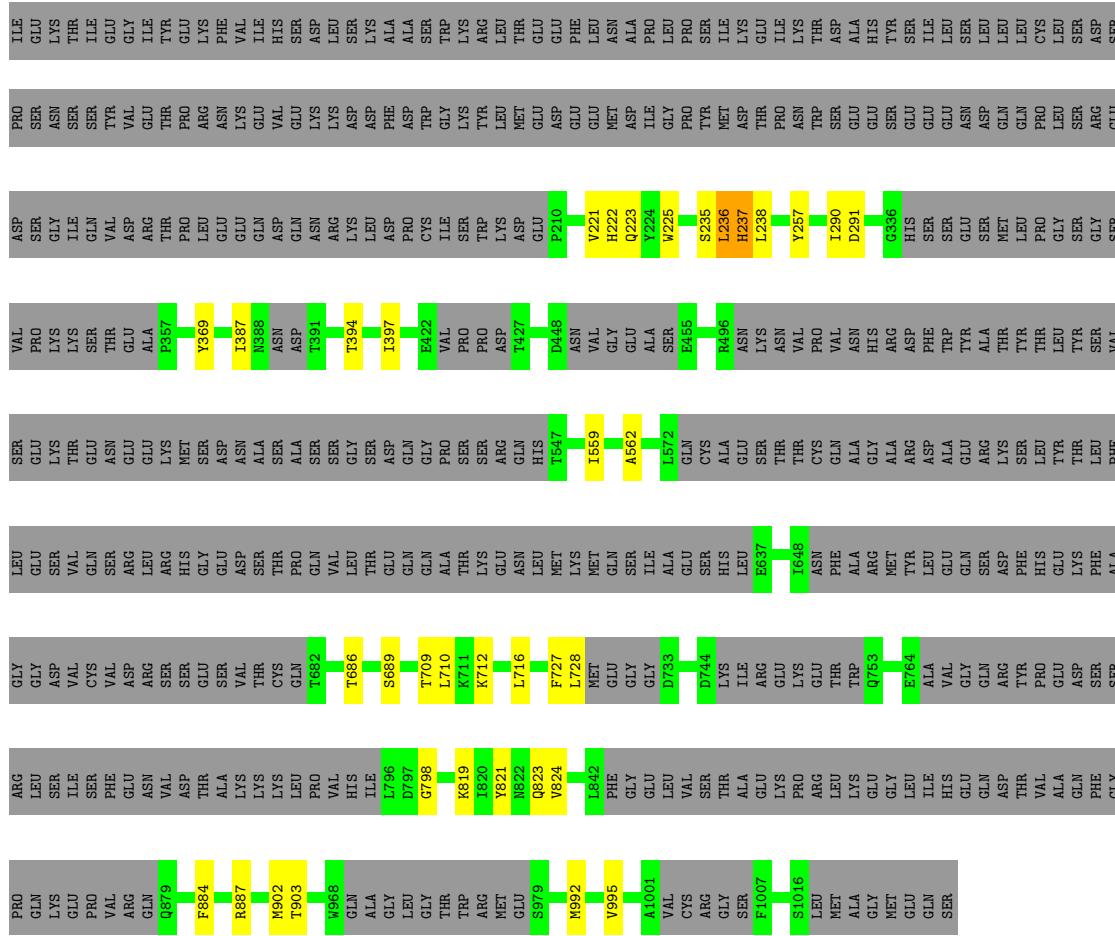


- Molecule 1: Mitotic-spindle organizing protein 1

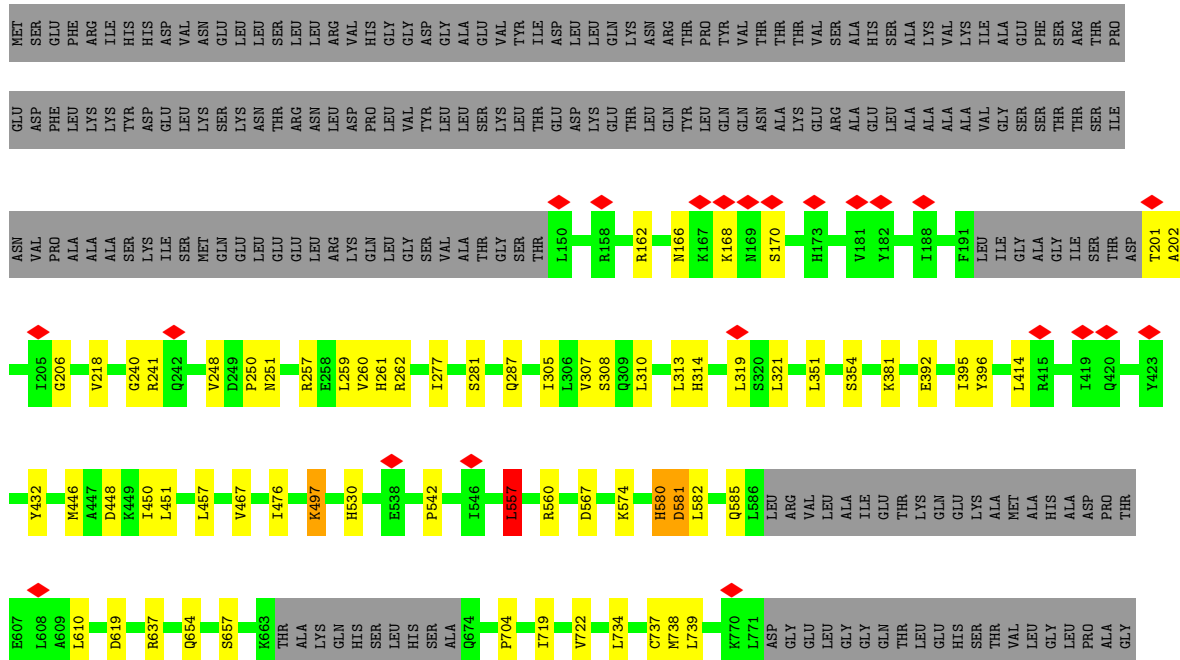


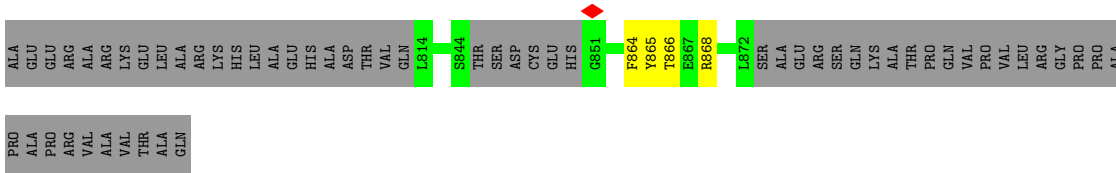
- Molecule 2: Gamma-tubulin complex component 3



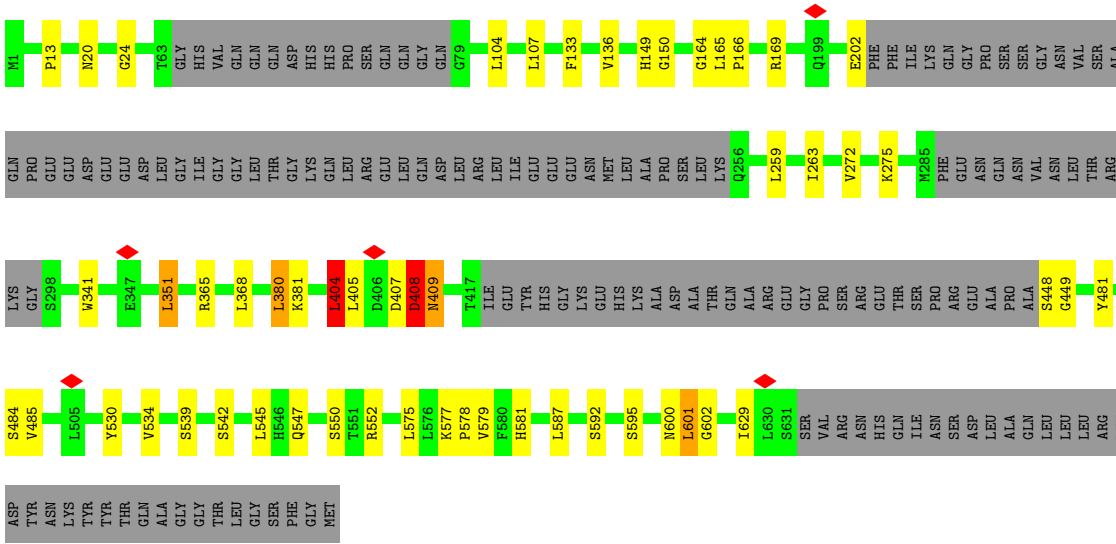


• Molecule 4: Gamma-tubulin complex component 2

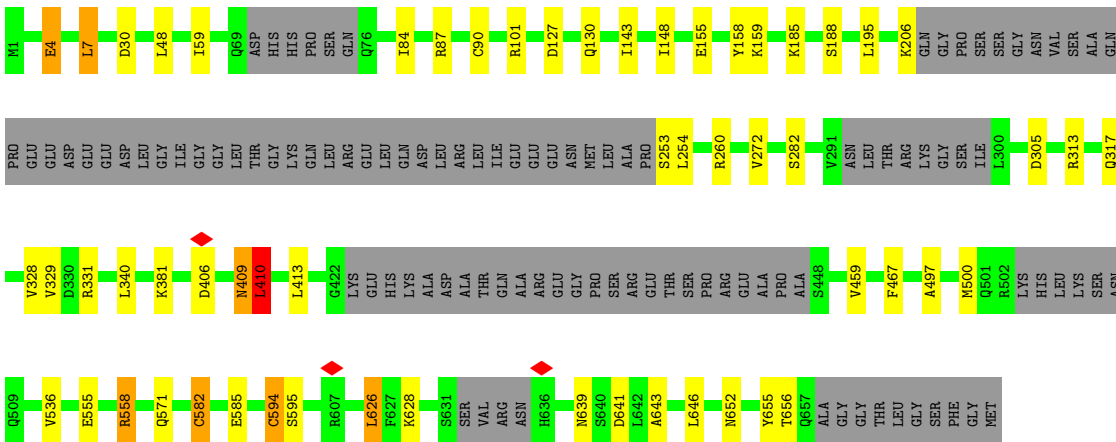
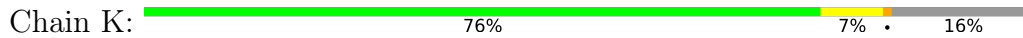




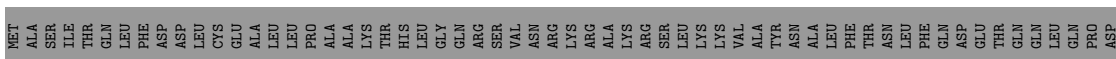
• Molecule 5: Gamma-tubulin complex component 4

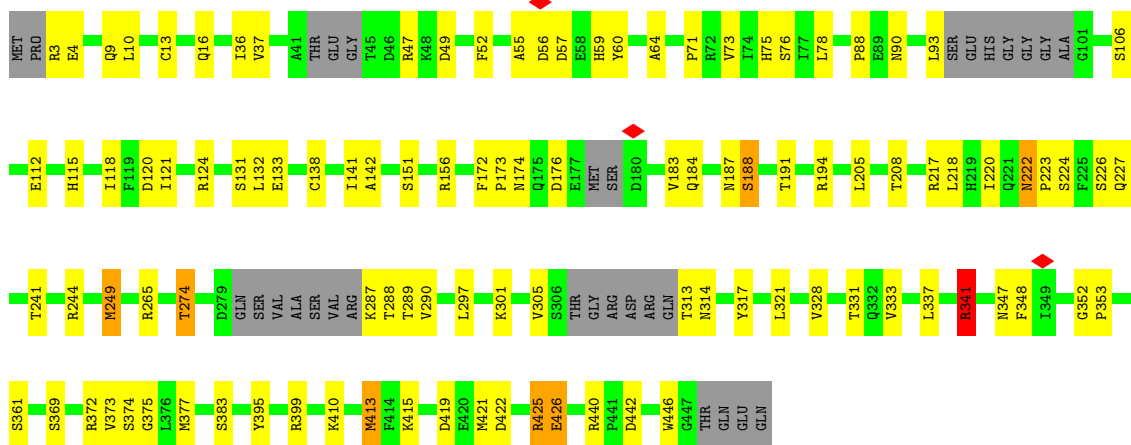


• Molecule 5: Gamma-tubulin complex component 4

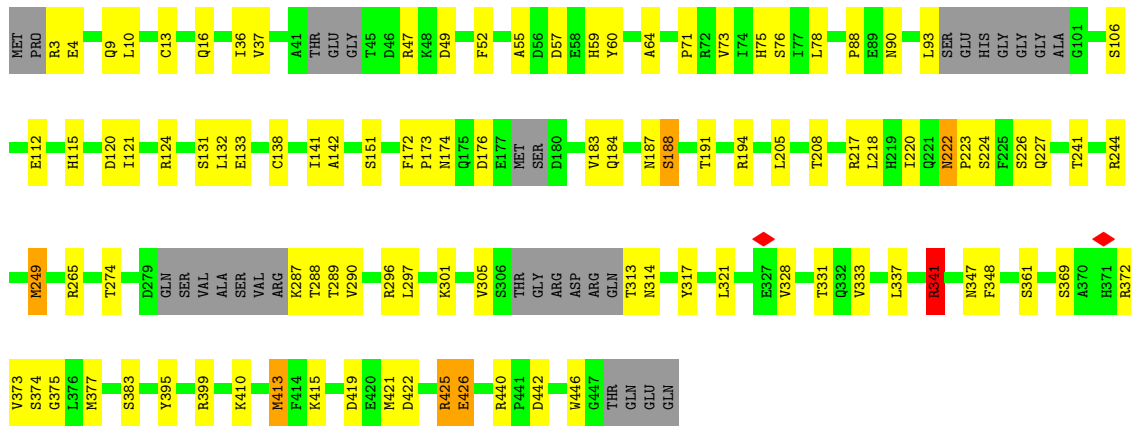


• Molecule 6: Gamma-tubulin complex component 6

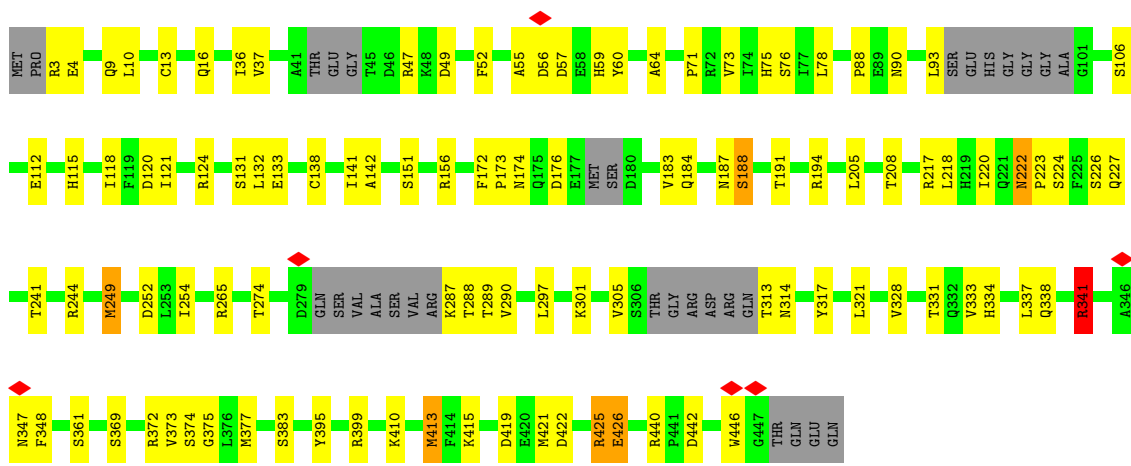




• Molecule 7: Tubulin gamma-1 chain

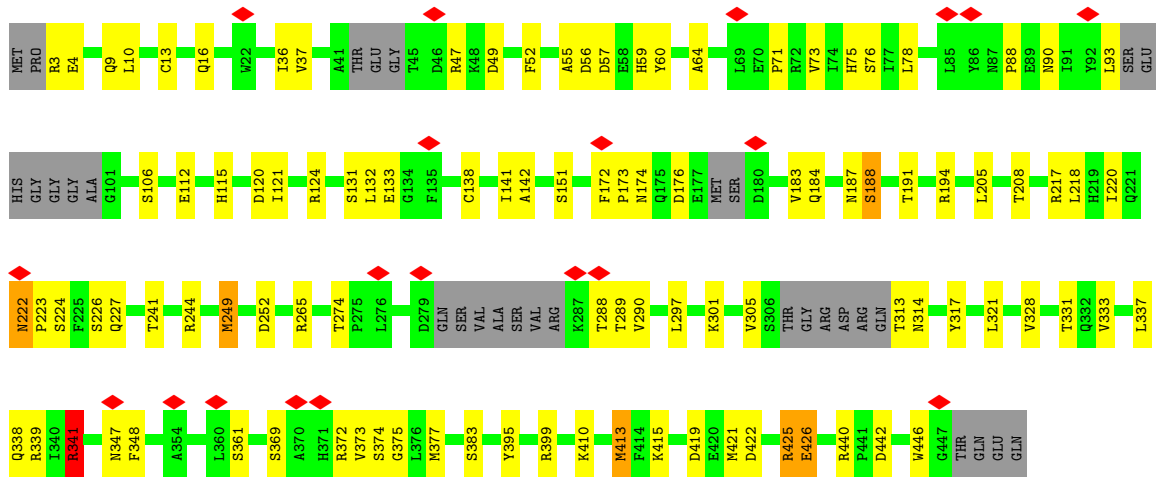


• Molecule 7: Tubulin gamma-1 chain



• Molecule 7: Tubulin gamma-1 chain

Chain Z:  70% 22% 7%



4 Experimental information

Property	Value	Source
EM reconstruction method	SINGLE PARTICLE	Depositor
Imposed symmetry	POINT, C1	Depositor
Number of particles used	92149	Depositor
Resolution determination method	FSC 0.143 CUT-OFF	Depositor
CTF correction method	PHASE FLIPPING AND AMPLITUDE CORRECTION	Depositor
Microscope	FEI TITAN KRIOS	Depositor
Voltage (kV)	300	Depositor
Electron dose ($e^-/\text{\AA}^2$)	35	Depositor
Minimum defocus (nm)	2000	Depositor
Maximum defocus (nm)	2500	Depositor
Magnification	Not provided	
Image detector	GATAN K3 (6k x 4k)	Depositor
Maximum map value	0.255	Depositor
Minimum map value	-0.033	Depositor
Average map value	0.001	Depositor
Map value standard deviation	0.007	Depositor
Recommended contour level	0.0468	Depositor
Map size (Å)	532.0, 532.0, 532.0	wwPDB
Map dimensions	200, 200, 200	wwPDB
Map angles (°)	90.0, 90.0, 90.0	wwPDB
Pixel spacing (Å)	2.66, 2.66, 2.66	Depositor

5 Model quality i

5.1 Standard geometry i

The Z score for a bond length (or angle) is the number of standard deviations the observed value is removed from the expected value. A bond length (or angle) with $|Z| > 5$ is considered an outlier worth inspection. RMSZ is the root-mean-square of all Z scores of the bond lengths (or angles).

Mol	Chain	Bond lengths		Bond angles	
		RMSZ	# $ Z > 5$	RMSZ	# $ Z > 5$
1	b	0.38	0/484	0.73	1/653 (0.2%)
1	m	0.37	0/484	0.73	1/653 (0.2%)
2	H	0.38	1/5009 (0.0%)	0.56	0/6761
2	a	0.32	0/948	0.61	0/1277
3	J	0.38	0/4525	0.63	1/6119 (0.0%)
3	l	0.40	0/894	0.62	3/1209 (0.2%)
4	G	0.37	0/5295	0.60	4/7147 (0.1%)
5	I	0.37	0/4322	0.58	4/5853 (0.1%)
5	K	0.43	3/4683 (0.1%)	0.63	8/6338 (0.1%)
6	L	0.53	4/4697 (0.1%)	0.68	9/6348 (0.1%)
7	U	0.35	0/3441	0.61	3/4661 (0.1%)
7	V	0.35	0/3441	0.61	3/4661 (0.1%)
7	W	0.35	0/3441	0.61	3/4661 (0.1%)
7	X	0.35	0/3441	0.61	3/4661 (0.1%)
7	Y	0.35	0/3441	0.61	3/4661 (0.1%)
7	Z	0.35	0/3441	0.61	3/4661 (0.1%)
All	All	0.39	8/51987 (0.0%)	0.61	49/70324 (0.1%)

Chiral center outliers are detected by calculating the chiral volume of a chiral center and verifying if the center is modelled as a planar moiety or with the opposite hand. A planarity outlier is detected by checking planarity of atoms in a peptide group, atoms in a mainchain group or atoms of a sidechain that are expected to be planar.

Mol	Chain	#Chirality outliers	#Planarity outliers
2	H	0	1
3	J	0	5
4	G	0	3
5	I	0	6
6	L	0	3
All	All	0	18

All (8) bond length outliers are listed below:

Mol	Chain	Res	Type	Atoms	Z	Observed(Å)	Ideal(Å)
6	L	320	PHE	CE2-CZ	20.67	1.76	1.37
6	L	320	PHE	CG-CD1	9.93	1.53	1.38
5	K	4	GLU	CB-CG	9.63	1.70	1.52
6	L	320	PHE	CD1-CE1	7.95	1.55	1.39
5	K	4	GLU	CD-OE1	-7.87	1.17	1.25
6	L	320	PHE	CB-CG	-5.60	1.41	1.51
5	K	582	CYS	CB-SG	-5.42	1.73	1.81
2	H	882	PHE	CB-CG	-5.24	1.42	1.51

All (49) bond angle outliers are listed below:

Mol	Chain	Res	Type	Atoms	Z	Observed(°)	Ideal(°)
7	W	341	ARG	NE-CZ-NH1	10.47	125.54	120.30
7	Z	341	ARG	NE-CZ-NH1	10.45	125.53	120.30
7	U	341	ARG	NE-CZ-NH1	10.45	125.53	120.30
7	X	341	ARG	NE-CZ-NH1	10.45	125.53	120.30
7	V	341	ARG	NE-CZ-NH1	10.40	125.50	120.30
7	Y	341	ARG	NE-CZ-NH1	10.31	125.46	120.30
6	L	320	PHE	CD1-CE1-CZ	-10.13	107.94	120.10
5	K	4	GLU	CA-CB-CG	8.84	132.85	113.40
3	l	121	PRO	CA-N-CD	-8.80	99.18	111.50
5	K	4	GLU	N-CA-CB	8.68	126.23	110.60
3	l	130	PRO	CA-N-CD	-8.64	99.41	111.50
6	L	320	PHE	CB-CG-CD1	-7.82	115.32	120.80
1	b	67	LEU	CA-CB-CG	7.73	133.08	115.30
1	m	67	LEU	CA-CB-CG	7.72	133.05	115.30
5	K	4	GLU	CB-CG-CD	7.54	134.57	114.20
6	L	320	PHE	CG-CD2-CE2	-6.91	113.20	120.80
5	K	4	GLU	CB-CA-C	-6.72	96.97	110.40
6	L	320	PHE	CG-CD1-CE1	6.49	127.94	120.80
7	V	413	MET	CA-CB-CG	6.27	123.97	113.30
7	Y	413	MET	CA-CB-CG	6.27	123.97	113.30
7	X	413	MET	CA-CB-CG	6.26	123.94	113.30
7	W	413	MET	CA-CB-CG	6.25	123.93	113.30
7	U	413	MET	CA-CB-CG	6.25	123.92	113.30
7	Z	413	MET	CA-CB-CG	6.25	123.92	113.30
6	L	1535	LEU	CA-CB-CG	5.93	128.93	115.30
3	J	237	HIS	C-N-CA	5.89	136.42	121.70
5	I	351	LEU	CB-CG-CD2	-5.86	101.03	111.00
6	L	1718	LEU	CA-CB-CG	5.84	128.72	115.30
6	L	1558	LEU	CA-CB-CG	5.50	127.96	115.30
5	K	7	LEU	CA-CB-CG	5.50	127.96	115.30
5	K	409	ASN	C-N-CA	5.49	135.43	121.70

Continued on next page...

Continued from previous page...

Mol	Chain	Res	Type	Atoms	Z	Observed(°)	Ideal(°)
5	I	380	LEU	CA-CB-CG	5.48	127.90	115.30
4	G	580	HIS	C-N-CA	5.46	135.34	121.70
5	K	626	LEU	CA-CB-CG	5.40	127.72	115.30
6	L	1804	PHE	N-CA-C	-5.34	96.58	111.00
6	L	320	PHE	CZ-CE2-CD2	5.33	126.50	120.10
5	I	404	LEU	C-N-CA	5.23	134.78	121.70
5	I	545	LEU	CA-CB-CG	5.23	127.34	115.30
3	l	119	ASP	CB-CG-OD2	5.18	122.97	118.30
4	G	414	LEU	CA-CB-CG	5.18	127.21	115.30
4	G	557	LEU	CA-CB-CG	5.18	127.21	115.30
5	K	410	LEU	CA-CB-CG	5.17	127.18	115.30
7	U	249	MET	CB-CG-SD	5.16	127.89	112.40
7	Z	249	MET	CB-CG-SD	5.16	127.86	112.40
7	W	249	MET	CB-CG-SD	5.15	127.86	112.40
7	V	249	MET	CB-CG-SD	5.15	127.85	112.40
7	X	249	MET	CB-CG-SD	5.14	127.82	112.40
7	Y	249	MET	CB-CG-SD	5.14	127.82	112.40
4	G	557	LEU	CB-CG-CD2	5.08	119.63	111.00

There are no chirality outliers.

All (18) planarity outliers are listed below:

Mol	Chain	Res	Type	Group
4	G	240	GLY	Peptide
4	G	580	HIS	Peptide
4	G	581	ASP	Mainchain
2	H	454	VAL	Peptide
5	I	407	ASP	Peptide
5	I	408	ASP	Mainchain
5	I	409	ASN	Peptide
5	I	600	ASN	Peptide
5	I	601	LEU	Mainchain
5	I	602	GLY	Peptide
3	J	235	SER	Peptide
3	J	236	LEU	Mainchain
3	J	237	HIS	Peptide
3	J	257	TYR	Peptide
3	J	798	GLY	Peptide
6	L	1806	ASN	Peptide
6	L	306	HIS	Peptide
6	L	345	VAL	Peptide

5.2 Too-close contacts [i](#)

In the following table, the Non-H and H(model) columns list the number of non-hydrogen atoms and hydrogen atoms in the chain respectively. The H(added) column lists the number of hydrogen atoms added and optimized by MolProbity. The Clashes column lists the number of clashes within the asymmetric unit, whereas Symm-Clashes lists symmetry-related clashes.

Mol	Chain	Non-H	H(model)	H(added)	Clashes	Symm-Clashes
1	b	484	0	512	0	0
1	m	484	0	512	0	0
2	H	4907	0	4896	29	0
2	a	933	0	953	0	0
3	J	4429	0	4482	19	0
3	l	875	0	841	0	0
4	G	5186	0	5219	42	0
5	I	4225	0	4259	27	0
5	K	4579	0	4586	38	0
6	L	4587	0	4636	33	0
7	U	3373	0	3325	46	0
7	V	3373	0	3325	45	0
7	W	3373	0	3325	47	0
7	X	3373	0	3325	43	0
7	Y	3373	0	3325	50	0
7	Z	3373	0	3325	48	0
All	All	50927	0	50846	442	0

The all-atom clashscore is defined as the number of clashes found per 1000 atoms (including hydrogen atoms). The all-atom clashscore for this structure is 5.

All (442) close contacts within the same asymmetric unit are listed below, sorted by their clash magnitude.

Atom-1	Atom-2	Interatomic distance (Å)	Clash overlap (Å)
6:L:320:PHE:CZ	6:L:320:PHE:CE2	1.76	1.66
7:W:56:ASP:HB2	7:X:296:ARG:HG2	1.61	0.82
4:G:574:LYS:HB2	4:G:619:ASP:HB3	1.72	0.72
6:L:1677:ALA:HA	6:L:1681:LEU:HD12	1.73	0.70
3:J:884:PHE:O	3:J:887:ARG:HB3	1.93	0.69
7:U:13:CYS:HA	7:U:16:GLN:HE21	1.59	0.68
7:V:13:CYS:HA	7:V:16:GLN:HE21	1.59	0.67
7:X:13:CYS:HA	7:X:16:GLN:HE21	1.59	0.67
7:Y:13:CYS:HA	7:Y:16:GLN:HE21	1.59	0.67
2:H:364:LEU:H	2:H:367:LEU:H	1.43	0.67
7:W:13:CYS:HA	7:W:16:GLN:HE21	1.59	0.67

Continued on next page...

Continued from previous page...

Atom-1	Atom-2	Interatomic distance (Å)	Clash overlap (Å)
7:Z:13:CYS:HA	7:Z:16:GLN:HE21	1.59	0.66
7:U:121:ILE:HG23	7:U:124:ARG:HH21	1.62	0.65
7:V:121:ILE:HG23	7:V:124:ARG:HH21	1.62	0.65
7:Y:121:ILE:HG23	7:Y:124:ARG:HH21	1.62	0.65
6:L:1797:ASP:O	6:L:1800:LEU:HB3	1.97	0.64
7:X:121:ILE:HG23	7:X:124:ARG:HH21	1.62	0.64
2:H:409:PRO:HA	2:H:412:ARG:HE	1.62	0.64
7:W:121:ILE:HG23	7:W:124:ARG:HH21	1.62	0.64
7:X:55:ALA:HB3	7:X:59:HIS:HB2	1.81	0.63
7:V:55:ALA:HB3	7:V:59:HIS:HB2	1.81	0.63
7:Z:121:ILE:HG23	7:Z:124:ARG:HH21	1.62	0.63
7:Z:55:ALA:HB3	7:Z:59:HIS:HB2	1.81	0.62
5:K:4:GLU:HG2	6:L:320:PHE:CZ	2.34	0.62
7:W:55:ALA:HB3	7:W:59:HIS:HB2	1.81	0.62
5:K:272:VAL:HG23	5:K:329:VAL:HG11	1.81	0.62
7:U:55:ALA:HB3	7:U:59:HIS:HB2	1.81	0.62
3:J:394:THR:H	3:J:397:ILE:HD12	1.64	0.62
3:J:727:PHE:HE2	3:J:821:TYR:HB3	1.65	0.62
7:Y:55:ALA:HB3	7:Y:59:HIS:HB2	1.81	0.61
6:L:347:VAL:HG12	6:L:348:LYS:HG2	1.81	0.61
4:G:585:GLN:HE22	4:G:739:LEU:HD12	1.66	0.60
7:V:184:GLN:O	7:V:188:SER:OG	2.20	0.60
6:L:1800:LEU:HB2	7:Z:338:GLN:HE22	1.66	0.60
7:W:184:GLN:O	7:W:188:SER:OG	2.20	0.60
6:L:1522:GLU:OE2	7:Z:47:ARG:NH1	2.35	0.60
5:K:206:LYS:HA	5:K:260:ARG:HE	1.65	0.59
7:X:184:GLN:O	7:X:188:SER:OG	2.20	0.59
7:U:184:GLN:O	7:U:188:SER:OG	2.20	0.59
4:G:395:ILE:HD11	4:G:450:ILE:HG23	1.85	0.59
7:Y:184:GLN:O	7:Y:188:SER:OG	2.20	0.59
7:Z:184:GLN:O	7:Z:188:SER:OG	2.20	0.58
5:I:104:LEU:HA	5:I:107:LEU:HD12	1.84	0.57
5:K:646:LEU:HB3	7:Y:341:ARG:HE	1.68	0.57
4:G:448:ASP:OD2	4:G:448:ASP:N	2.36	0.57
5:K:48:LEU:HD21	5:K:130:GLN:HA	1.87	0.57
5:K:555:GLU:OE1	5:K:558:ARG:NH2	2.38	0.57
4:G:201:THR:OG1	4:G:202:ALA:N	2.35	0.57
7:U:313:THR:OG1	7:U:314:ASN:N	2.38	0.57
7:W:313:THR:OG1	7:W:314:ASN:N	2.38	0.57
7:X:297:LEU:HD21	7:X:377:MET:HB3	1.87	0.57
7:X:313:THR:OG1	7:X:314:ASN:N	2.38	0.57

Continued on next page...

Continued from previous page...

Atom-1	Atom-2	Interatomic distance (Å)	Clash overlap (Å)
7:V:71:PRO:HG3	7:V:93:LEU:HD22	1.87	0.56
7:Y:297:LEU:HD21	7:Y:377:MET:HB3	1.87	0.56
7:Y:313:THR:OG1	7:Y:314:ASN:N	2.38	0.56
7:Z:71:PRO:HG3	7:Z:93:LEU:HD22	1.87	0.56
7:Z:297:LEU:HD21	7:Z:377:MET:HB3	1.87	0.56
7:U:297:LEU:HD21	7:U:377:MET:HB3	1.87	0.56
7:U:71:PRO:HG3	7:U:93:LEU:HD22	1.87	0.56
7:W:71:PRO:HG3	7:W:93:LEU:HD22	1.87	0.56
5:K:497:ALA:HB2	7:Y:254:ILE:HD11	1.87	0.56
7:Y:71:PRO:HG3	7:Y:93:LEU:HD22	1.87	0.56
7:X:71:PRO:HG3	7:X:93:LEU:HD22	1.87	0.56
5:I:575:LEU:O	5:I:577:LYS:NZ	2.39	0.55
5:K:410:LEU:HD13	5:K:413:LEU:HD12	1.87	0.55
7:V:297:LEU:HD21	7:V:377:MET:HB3	1.87	0.55
7:Z:313:THR:OG1	7:Z:314:ASN:N	2.38	0.55
7:V:313:THR:OG1	7:V:314:ASN:N	2.38	0.55
7:W:297:LEU:HD21	7:W:377:MET:HB3	1.87	0.54
4:G:864:PHE:CG	7:U:353:PRO:HB3	2.42	0.54
3:J:222:HIS:CD2	3:J:225:TRP:HE1	2.25	0.54
3:J:727:PHE:CE2	3:J:821:TYR:HB3	2.42	0.54
6:L:469:GLN:HA	6:L:517:HIS:HE1	1.72	0.54
7:Z:226:SER:OG	7:Z:227:GLN:NE2	2.41	0.54
2:H:702:HIS:O	2:H:705:HIS:HB2	2.08	0.54
6:L:392:SER:O	6:L:395:SER:OG	2.21	0.54
5:K:253:SER:OG	5:K:254:LEU:N	2.37	0.54
7:Y:425:ARG:NH2	7:Y:426:GLU:OE2	2.39	0.53
2:H:287:LEU:HB2	2:H:366:ARG:HH12	1.72	0.53
5:K:313:ARG:O	5:K:317:GLN:NE2	2.41	0.53
6:L:1566:THR:OG1	6:L:1569:ALA:N	2.37	0.53
6:L:1800:LEU:HD21	7:Z:337:LEU:HD23	1.90	0.53
7:V:226:SER:OG	7:V:227:GLN:NE2	2.41	0.53
7:W:425:ARG:NH2	7:W:426:GLU:OE2	2.40	0.53
7:X:226:SER:OG	7:X:227:GLN:NE2	2.41	0.53
7:X:274:THR:HG1	7:X:375:GLY:H	1.55	0.53
3:J:387:ILE:O	6:L:307:ARG:NH2	2.41	0.53
7:U:184:GLN:HA	7:U:187:ASN:HD22	1.74	0.53
5:I:592:SER:O	5:I:595:SER:OG	2.26	0.53
7:U:226:SER:OG	7:U:227:GLN:NE2	2.41	0.53
7:W:226:SER:OG	7:W:227:GLN:NE2	2.41	0.53
7:Y:226:SER:OG	7:Y:227:GLN:NE2	2.41	0.53
7:Z:184:GLN:HA	7:Z:187:ASN:HD22	1.74	0.53

Continued on next page...

Continued from previous page...

Atom-1	Atom-2	Interatomic distance (Å)	Clash overlap (Å)
7:X:425:ARG:NH2	7:X:426:GLU:OE2	2.39	0.53
7:X:112:GLU:O	7:X:115:HIS:ND1	2.43	0.52
7:U:112:GLU:O	7:U:115:HIS:ND1	2.43	0.52
2:H:490:ILE:HA	2:H:493:LEU:HD12	1.91	0.52
7:W:112:GLU:O	7:W:115:HIS:ND1	2.43	0.52
7:X:184:GLN:HA	7:X:187:ASN:HD22	1.74	0.52
7:Y:112:GLU:O	7:Y:115:HIS:ND1	2.43	0.52
5:K:571:GLN:HE22	5:K:641:ASP:HB2	1.75	0.52
7:V:274:THR:HG1	7:V:375:GLY:H	1.57	0.52
7:W:184:GLN:HA	7:W:187:ASN:HD22	1.74	0.52
7:V:112:GLU:O	7:V:115:HIS:ND1	2.43	0.52
2:H:364:LEU:HD22	2:H:370:TRP:HE1	1.74	0.52
7:V:184:GLN:HA	7:V:187:ASN:HD22	1.74	0.52
7:Z:112:GLU:O	7:Z:115:HIS:ND1	2.43	0.52
7:Y:184:GLN:HA	7:Y:187:ASN:HD22	1.74	0.52
7:Z:425:ARG:NH2	7:Z:426:GLU:OE2	2.40	0.52
4:G:351:LEU:O	4:G:354:SER:OG	2.27	0.51
7:V:4:GLU:O	7:V:133:GLU:N	2.42	0.51
7:U:4:GLU:O	7:U:133:GLU:N	2.42	0.51
4:G:218:VAL:HG12	4:G:321:LEU:HD13	1.92	0.51
6:L:390:PRO:HB2	6:L:393:ILE:HG12	1.91	0.51
7:W:4:GLU:O	7:W:133:GLU:N	2.42	0.51
5:I:485:VAL:HG12	5:I:587:LEU:HD21	1.93	0.51
5:K:195:LEU:HD21	6:L:1474:VAL:HG21	1.93	0.51
7:Y:274:THR:HG1	7:Y:375:GLY:H	1.57	0.51
2:H:326:ALA:HB2	5:I:165:LEU:HD23	1.92	0.50
7:Z:172:PHE:N	7:Z:205:LEU:O	2.42	0.50
2:H:448:VAL:HG22	2:H:484:LEU:HD12	1.93	0.50
6:L:1590:VAL:HG11	6:L:1734:SER:HA	1.93	0.50
7:U:289:THR:OG1	7:U:290:VAL:N	2.45	0.50
4:G:737:CYS:SG	4:G:738:MET:N	2.84	0.50
2:H:478:ASP:O	2:H:482:LYS:NZ	2.45	0.50
7:W:172:PHE:N	7:W:205:LEU:O	2.42	0.50
7:Y:289:THR:OG1	7:Y:290:VAL:N	2.45	0.50
7:Z:337:LEU:O	7:Z:341:ARG:HB3	2.12	0.50
5:K:30:ASP:OD1	5:K:30:ASP:N	2.45	0.50
7:U:337:LEU:O	7:U:341:ARG:HB3	2.12	0.50
7:V:289:THR:OG1	7:V:290:VAL:N	2.45	0.49
7:V:337:LEU:O	7:V:341:ARG:HB3	2.12	0.49
7:X:337:LEU:O	7:X:341:ARG:HB3	2.12	0.49
7:V:172:PHE:N	7:V:205:LEU:O	2.42	0.49

Continued on next page...

Continued from previous page...

Atom-1	Atom-2	Interatomic distance (Å)	Clash overlap (Å)
4:G:864:PHE:CD1	7:U:353:PRO:HB3	2.48	0.49
5:K:84:ILE:HA	5:K:87:ARG:HE	1.78	0.49
7:W:289:THR:OG1	7:W:290:VAL:N	2.45	0.49
3:J:369:TYR:OH	5:K:127:ASP:O	2.30	0.49
5:K:143:ILE:HD13	5:K:148:ILE:HD12	1.94	0.49
7:V:425:ARG:NH2	7:V:426:GLU:OE2	2.39	0.49
7:W:337:LEU:O	7:W:341:ARG:HB3	2.12	0.49
7:X:172:PHE:N	7:X:205:LEU:O	2.42	0.49
7:W:47:ARG:HE	7:W:49:ASP:HB3	1.78	0.49
7:X:289:THR:OG1	7:X:290:VAL:N	2.45	0.49
2:H:874:ARG:O	2:H:877:SER:OG	2.29	0.49
7:Y:337:LEU:O	7:Y:341:ARG:HB3	2.12	0.49
7:Z:4:GLU:O	7:Z:133:GLU:N	2.42	0.49
7:Z:415:LYS:HZ2	7:Z:419:ASP:H	1.60	0.49
5:I:365:ARG:HG2	5:I:368:LEU:HG	1.94	0.49
6:L:506:TYR:O	6:L:509:ALA:HB3	2.13	0.49
7:V:47:ARG:HE	7:V:49:ASP:HB3	1.77	0.48
7:Z:174:ASN:O	7:Z:208:THR:OG1	2.30	0.48
5:K:406:ASP:OD2	7:Z:339:ARG:NH1	2.46	0.48
7:U:425:ARG:NH2	7:U:426:GLU:OE2	2.40	0.48
7:Z:289:THR:OG1	7:Z:290:VAL:N	2.45	0.48
4:G:864:PHE:HD1	4:G:865:TYR:HD1	1.61	0.48
2:H:447:PHE:O	2:H:467:ARG:N	2.41	0.48
6:L:369:SER:OG	6:L:370:LEU:N	2.47	0.48
7:U:151:SER:HB2	7:U:194:ARG:HG2	1.96	0.48
3:J:221:VAL:HG12	3:J:223:GLN:HG2	1.95	0.48
7:W:36:ILE:HG12	7:W:59:HIS:HE1	1.79	0.48
2:H:781:GLN:HA	2:H:784:GLU:HG2	1.94	0.48
5:K:639:ASN:HB2	7:Y:334:HIS:NE2	2.28	0.48
7:W:151:SER:HB2	7:W:194:ARG:HG2	1.96	0.48
7:X:36:ILE:HG12	7:X:59:HIS:HE1	1.79	0.48
2:H:626:LEU:HB2	2:H:637:VAL:HG13	1.96	0.48
7:V:151:SER:HB2	7:V:194:ARG:HG2	1.96	0.48
7:X:151:SER:HB2	7:X:194:ARG:HG2	1.95	0.48
7:Z:47:ARG:HE	7:Z:49:ASP:HB3	1.78	0.48
5:K:594:CYS:SG	5:K:595:SER:N	2.86	0.48
7:U:47:ARG:HE	7:U:49:ASP:HB3	1.77	0.48
7:Y:36:ILE:HG12	7:Y:59:HIS:HE1	1.79	0.48
7:Y:47:ARG:HE	7:Y:49:ASP:HB3	1.78	0.48
4:G:542:PRO:HA	4:G:610:LEU:HD23	1.95	0.48
7:U:36:ILE:HG12	7:U:59:HIS:HE1	1.79	0.48

Continued on next page...

Continued from previous page...

Atom-1	Atom-2	Interatomic distance (Å)	Clash overlap (Å)
7:Y:151:SER:HB2	7:Y:194:ARG:HG2	1.95	0.48
6:L:428:VAL:HG12	6:L:531:PRO:HD2	1.94	0.47
7:V:415:LYS:HZ2	7:V:419:ASP:H	1.62	0.47
7:X:47:ARG:HE	7:X:49:ASP:HB3	1.77	0.47
7:Y:75:HIS:HA	7:Y:78:LEU:HD12	1.96	0.47
7:Z:151:SER:HB2	7:Z:194:ARG:HG2	1.95	0.47
7:U:174:ASN:O	7:U:208:THR:OG1	2.29	0.47
7:X:75:HIS:HA	7:X:78:LEU:HD12	1.96	0.47
2:H:601:LEU:HD22	2:H:623:VAL:HG13	1.97	0.47
5:I:547:GLN:O	5:I:550:SER:OG	2.31	0.47
6:L:320:PHE:HD1	6:L:320:PHE:HA	1.53	0.47
7:V:75:HIS:HA	7:V:78:LEU:HD12	1.96	0.47
7:U:75:HIS:HA	7:U:78:LEU:HD12	1.96	0.47
7:Z:36:ILE:HG12	7:Z:59:HIS:HE1	1.79	0.47
7:U:274:THR:HG1	7:U:375:GLY:H	1.61	0.47
7:W:73:VAL:O	7:W:76:SER:OG	2.28	0.47
7:X:73:VAL:O	7:X:76:SER:OG	2.28	0.47
6:L:1686:CYS:SG	6:L:1687:GLU:N	2.88	0.47
7:W:75:HIS:HA	7:W:78:LEU:HD12	1.96	0.47
7:X:141:ILE:HB	7:X:173:PRO:HD3	1.97	0.47
7:Y:4:GLU:O	7:Y:133:GLU:N	2.42	0.47
5:I:164:GLY:H	5:I:169:ARG:HE	1.62	0.47
5:I:166:PRO:HA	5:I:169:ARG:HD2	1.97	0.47
5:K:652:ASN:O	5:K:656:THR:N	2.35	0.47
7:X:4:GLU:O	7:X:133:GLU:N	2.42	0.47
7:U:172:PHE:N	7:U:205:LEU:O	2.42	0.47
4:G:277:ILE:O	4:G:281:SER:OG	2.28	0.47
2:H:594:GLN:HA	2:H:597:LEU:HD13	1.97	0.47
7:V:36:ILE:HG12	7:V:59:HIS:HE1	1.78	0.47
6:L:296:CYS:H	6:L:303:PRO:HG3	1.80	0.47
7:W:141:ILE:HB	7:W:173:PRO:HD3	1.97	0.46
7:Z:187:ASN:O	7:Z:191:THR:OG1	2.31	0.46
4:G:287:GLN:HB3	2:H:407:GLY:HA3	1.97	0.46
4:G:654:GLN:O	4:G:657:SER:OG	2.33	0.46
5:K:4:GLU:HG2	6:L:320:PHE:HZ	1.78	0.46
5:K:4:GLU:HB3	5:K:7:LEU:HD22	1.95	0.46
7:Y:317:TYR:HD2	7:Y:348:PHE:HB3	1.80	0.46
2:H:535:ASP:OD1	2:H:535:ASP:N	2.46	0.46
7:Y:174:ASN:O	7:Y:208:THR:OG1	2.30	0.46
5:I:481:TYR:O	5:I:484:SER:OG	2.34	0.46
7:U:317:TYR:HD2	7:U:348:PHE:HB3	1.80	0.46

Continued on next page...

Continued from previous page...

Atom-1	Atom-2	Interatomic distance (Å)	Clash overlap (Å)
3:J:559:ILE:O	3:J:562:ALA:HB3	2.14	0.46
7:W:317:TYR:HD2	7:W:348:PHE:HB3	1.80	0.46
7:X:317:TYR:HD2	7:X:348:PHE:HB3	1.80	0.46
7:Z:75:HIS:HA	7:Z:78:LEU:HD12	1.96	0.46
4:G:392:GLU:HG2	4:G:396:TYR:HE2	1.81	0.46
5:I:579:VAL:HG12	5:I:629:ILE:HG12	1.98	0.46
7:W:274:THR:HG1	7:W:375:GLY:H	1.57	0.46
7:W:415:LYS:HZ2	7:W:419:ASP:H	1.62	0.46
7:Y:73:VAL:O	7:Y:76:SER:OG	2.28	0.46
4:G:497:LYS:HE3	4:G:497:LYS:HB3	1.77	0.46
5:K:328:VAL:HA	5:K:331:ARG:HE	1.81	0.46
6:L:318:ASP:OD1	6:L:318:ASP:N	2.41	0.46
7:V:141:ILE:HB	7:V:173:PRO:HD3	1.97	0.46
7:Z:317:TYR:HD2	7:Z:348:PHE:HB3	1.80	0.46
7:U:141:ILE:HB	7:U:173:PRO:HD3	1.97	0.46
7:V:317:TYR:HD2	7:V:348:PHE:HB3	1.80	0.46
4:G:567:ASP:OD2	4:G:567:ASP:N	2.46	0.45
3:J:222:HIS:HD2	3:J:225:TRP:HE1	1.61	0.45
5:I:164:GLY:HA2	5:I:169:ARG:HH21	1.81	0.45
7:X:415:LYS:HZ2	7:X:419:ASP:H	1.63	0.45
7:Z:73:VAL:O	7:Z:76:SER:OG	2.28	0.45
7:V:73:VAL:O	7:V:76:SER:OG	2.28	0.45
7:Y:141:ILE:HB	7:Y:173:PRO:HD3	1.97	0.45
7:Z:141:ILE:HB	7:Z:173:PRO:HD3	1.97	0.45
7:Z:395:TYR:HE2	7:Z:425:ARG:HG3	1.82	0.45
5:I:20:ASN:H	5:I:24:GLY:HA2	1.82	0.45
7:V:252:ASP:OD1	7:V:252:ASP:N	2.48	0.45
7:X:142:ALA:HB3	7:X:173:PRO:HG3	1.99	0.45
5:I:149:HIS:CD2	5:I:202:GLU:HB3	2.52	0.45
7:U:73:VAL:O	7:U:76:SER:OG	2.28	0.45
7:U:142:ALA:HB3	7:U:173:PRO:HG3	1.99	0.45
7:Z:142:ALA:HB3	7:Z:173:PRO:HG3	1.99	0.45
5:K:643:ALA:HA	7:Y:338:GLN:HE22	1.82	0.45
7:U:415:LYS:HZ2	7:U:419:ASP:H	1.63	0.45
7:Y:142:ALA:HB3	7:Y:173:PRO:HG3	1.99	0.45
5:I:272:VAL:HA	5:I:275:LYS:HD3	1.99	0.45
7:Z:222:ASN:OD1	7:Z:222:ASN:N	2.50	0.45
4:G:557:LEU:HB3	7:V:343:ARG:HH11	1.83	0.44
5:K:305:ASP:N	5:K:305:ASP:OD1	2.50	0.44
7:U:222:ASN:OD1	7:U:222:ASN:N	2.50	0.44
7:V:220:ILE:HB	7:V:223:PRO:HD2	1.99	0.44

Continued on next page...

Continued from previous page...

Atom-1	Atom-2	Interatomic distance (Å)	Clash overlap (Å)
7:X:174:ASN:O	7:X:208:THR:OG1	2.30	0.44
4:G:257:ARG:HE	4:G:261:HIS:HE1	1.64	0.44
5:K:628:LYS:HA	5:K:628:LYS:HD2	1.73	0.44
7:V:395:TYR:HE2	7:V:425:ARG:HG3	1.82	0.44
7:W:174:ASN:O	7:W:208:THR:OG1	2.30	0.44
6:L:319:ALA:HA	6:L:322:LYS:HE3	1.97	0.44
7:V:222:ASN:OD1	7:V:222:ASN:N	2.50	0.44
7:Y:395:TYR:HE2	7:Y:425:ARG:HG3	1.82	0.44
4:G:206:GLY:H	4:G:251:ASN:HD22	1.65	0.44
5:K:59:ILE:HG12	5:K:90:CYS:HB3	1.98	0.44
7:W:131:SER:OG	7:W:132:LEU:N	2.51	0.44
7:X:131:SER:OG	7:X:132:LEU:N	2.51	0.44
7:Y:222:ASN:OD1	7:Y:222:ASN:N	2.50	0.44
2:H:433:TRP:HE1	2:H:484:LEU:HA	1.83	0.44
5:I:341:TRP:CE2	5:I:552:ARG:HA	2.52	0.44
7:X:9:GLN:HA	7:X:138:CYS:HB2	2.00	0.44
7:Y:172:PHE:N	7:Y:205:LEU:O	2.42	0.44
7:Y:415:LYS:HZ2	7:Y:419:ASP:H	1.64	0.44
7:Z:220:ILE:HB	7:Z:223:PRO:HD2	2.00	0.44
5:I:530:TYR:O	5:I:534:VAL:HG23	2.18	0.44
7:U:88:PRO:HD2	7:U:90:ASN:HD22	1.83	0.44
7:X:395:TYR:HE2	7:X:425:ARG:HG3	1.82	0.44
3:J:222:HIS:HA	3:J:225:TRP:NE1	2.33	0.44
7:U:399:ARG:NH1	7:U:421:MET:SD	2.91	0.44
7:W:9:GLN:HA	7:W:138:CYS:HB2	2.00	0.44
7:W:142:ALA:HB3	7:W:173:PRO:HG3	1.99	0.44
7:X:88:PRO:HD2	7:X:90:ASN:HD22	1.83	0.44
7:Y:131:SER:OG	7:Y:132:LEU:N	2.51	0.44
5:I:578:PRO:HA	5:I:581:HIS:CD2	2.53	0.44
7:U:395:TYR:HE2	7:U:425:ARG:HG3	1.82	0.44
7:V:131:SER:OG	7:V:132:LEU:N	2.51	0.44
7:V:142:ALA:HB3	7:V:173:PRO:HG3	1.99	0.44
7:W:369:SER:H	7:W:372:ARG:NH2	2.16	0.44
5:I:133:PHE:HA	5:I:136:VAL:HG22	2.00	0.44
5:I:539:SER:O	5:I:542:SER:OG	2.31	0.44
7:U:369:SER:H	7:U:372:ARG:NH2	2.16	0.44
7:W:395:TYR:HE2	7:W:425:ARG:HG3	1.82	0.44
7:X:220:ILE:HB	7:X:223:PRO:HD2	2.00	0.44
7:X:399:ARG:NH1	7:X:421:MET:SD	2.91	0.44
4:G:719:ILE:HA	4:G:722:VAL:HG22	1.99	0.43
7:V:369:SER:H	7:V:372:ARG:NH2	2.16	0.43

Continued on next page...

Continued from previous page...

Atom-1	Atom-2	Interatomic distance (Å)	Clash overlap (Å)
7:Y:220:ILE:HB	7:Y:223:PRO:HD2	1.99	0.43
7:Z:369:SER:H	7:Z:372:ARG:NH2	2.16	0.43
4:G:162:ARG:O	4:G:166:ASN:ND2	2.51	0.43
2:H:412:ARG:HA	2:H:415:VAL:HG12	1.99	0.43
7:U:9:GLN:HA	7:U:138:CYS:HB2	2.00	0.43
7:W:222:ASN:N	7:W:222:ASN:OD1	2.50	0.43
7:W:399:ARG:NH1	7:W:421:MET:SD	2.91	0.43
7:X:222:ASN:OD1	7:X:222:ASN:N	2.50	0.43
7:Y:399:ARG:NH1	7:Y:421:MET:SD	2.91	0.43
5:K:185:LYS:O	5:K:188:SER:OG	2.36	0.43
7:V:399:ARG:NH1	7:V:421:MET:SD	2.91	0.43
5:K:652:ASN:HB3	5:K:655:TYR:HB3	2.00	0.43
6:L:1803:ASN:ND2	7:Z:341:ARG:HH21	2.15	0.43
7:U:252:ASP:OD1	7:U:252:ASP:N	2.48	0.43
6:L:297:TRP:HA	6:L:300:VAL:HG22	2.00	0.43
7:U:9:GLN:HE22	7:U:64:ALA:HB1	1.84	0.43
7:W:9:GLN:HE22	7:W:64:ALA:HB1	1.84	0.43
7:W:217:ARG:HG3	7:W:218:LEU:HG	2.01	0.43
7:W:220:ILE:HB	7:W:223:PRO:HD2	1.99	0.43
7:X:9:GLN:HE22	7:X:64:ALA:HB1	1.84	0.43
7:X:369:SER:H	7:X:372:ARG:NH2	2.16	0.43
7:Y:88:PRO:HD2	7:Y:90:ASN:HD22	1.83	0.43
7:Y:369:SER:H	7:Y:372:ARG:NH2	2.16	0.43
7:Z:88:PRO:HD2	7:Z:90:ASN:HD22	1.83	0.43
7:Z:131:SER:OG	7:Z:132:LEU:N	2.51	0.43
7:Z:274:THR:HG1	7:Z:375:GLY:H	1.61	0.43
7:Z:399:ARG:NH1	7:Z:421:MET:SD	2.91	0.43
4:G:307:VAL:HA	4:G:310:LEU:HG	2.01	0.43
6:L:1728:VAL:O	6:L:1731:SER:OG	2.34	0.43
2:H:555:LEU:HD11	2:H:651:VAL:HG21	2.01	0.43
5:I:408:ASP:N	5:I:408:ASP:OD1	2.52	0.43
6:L:1656:ARG:H	6:L:1656:ARG:HG2	1.65	0.43
7:W:88:PRO:HD2	7:W:90:ASN:HD22	1.83	0.43
7:Y:9:GLN:HA	7:Y:138:CYS:HB2	2.00	0.43
7:U:131:SER:OG	7:U:132:LEU:N	2.51	0.43
7:V:9:GLN:HA	7:V:138:CYS:HB2	2.00	0.43
7:V:217:ARG:HG3	7:V:218:LEU:HG	2.01	0.43
4:G:305:ILE:O	4:G:308:SER:OG	2.29	0.43
2:H:482:LYS:HA	2:H:482:LYS:HD3	1.84	0.43
2:H:682:LYS:HB2	7:V:254:ILE:HD11	1.99	0.43
5:K:155:GLU:O	5:K:159:LYS:N	2.47	0.43

Continued on next page...

Continued from previous page...

Atom-1	Atom-2	Interatomic distance (Å)	Clash overlap (Å)
7:Z:217:ARG:HG3	7:Z:218:LEU:HG	2.01	0.43
4:G:259:LEU:HA	4:G:262:ARG:HE	1.84	0.43
2:H:887:LYS:HD3	2:H:887:LYS:HA	1.90	0.43
6:L:1779:LEU:HA	6:L:1782:VAL:HG12	2.01	0.43
7:U:217:ARG:HG3	7:U:218:LEU:HG	2.01	0.43
7:V:88:PRO:HD2	7:V:90:ASN:HD22	1.83	0.43
4:G:314:HIS:HB2	4:G:319:LEU:HD12	2.00	0.42
7:Z:9:GLN:HA	7:Z:138:CYS:HB2	2.00	0.42
4:G:250:PRO:HA	4:G:257:ARG:HH12	1.85	0.42
4:G:530:HIS:HA	7:U:3:ARG:HH22	1.84	0.42
4:G:457:LEU:HD22	4:G:467:VAL:HG11	2.00	0.42
4:G:704:PRO:HG3	7:U:330:PRO:HB2	2.00	0.42
7:U:220:ILE:HB	7:U:223:PRO:HD2	2.00	0.42
3:J:290:ILE:HG13	3:J:291:ASP:H	1.85	0.42
7:V:9:GLN:HE22	7:V:64:ALA:HB1	1.84	0.42
7:X:217:ARG:HG3	7:X:218:LEU:HG	2.01	0.42
3:J:686:THR:O	3:J:689:SER:OG	2.35	0.42
3:J:709:THR:HA	3:J:712:LYS:HZ3	1.85	0.42
5:K:536:VAL:HG21	5:K:571:GLN:HG3	2.01	0.42
7:Y:217:ARG:HG3	7:Y:218:LEU:HG	2.01	0.42
4:G:582:LEU:H	4:G:582:LEU:HG	1.69	0.42
4:G:865:TYR:HA	4:G:868:ARG:HG3	2.02	0.42
5:K:282:SER:HB3	5:K:340:LEU:HD11	2.01	0.42
5:K:585:GLU:OE1	5:K:585:GLU:N	2.52	0.42
7:W:187:ASN:O	7:W:191:THR:OG1	2.31	0.42
7:Z:3:ARG:HB2	7:Z:133:GLU:HB2	2.02	0.42
5:K:500:MET:HE3	5:K:500:MET:HB3	1.99	0.42
7:U:187:ASN:O	7:U:191:THR:OG1	2.31	0.42
7:X:3:ARG:HB2	7:X:133:GLU:HB2	2.02	0.42
5:K:582:CYS:SG	5:K:626:LEU:HB3	2.60	0.42
7:Y:241:THR:OG1	7:Y:244:ARG:NH2	2.53	0.42
7:Z:252:ASP:OD1	7:Z:252:ASP:N	2.48	0.42
7:Z:9:GLN:HE22	7:Z:64:ALA:HB1	1.84	0.42
5:I:351:LEU:HA	5:I:351:LEU:HD23	1.80	0.42
7:W:241:THR:OG1	7:W:244:ARG:NH2	2.53	0.41
3:J:728:LEU:HD21	3:J:824:VAL:HG23	2.01	0.41
5:K:101:ARG:H	5:K:101:ARG:HG3	1.57	0.41
7:X:106:SER:HA	7:X:410:LYS:HE2	2.03	0.41
7:X:187:ASN:O	7:X:191:THR:OG1	2.31	0.41
7:Y:156:ARG:HA	7:Y:156:ARG:HD3	1.89	0.41
7:Y:287:LYS:HD2	7:Y:287:LYS:HA	1.88	0.41

Continued on next page...

Continued from previous page...

Atom-1	Atom-2	Interatomic distance (Å)	Clash overlap (Å)
5:I:259:LEU:HA	5:I:263:ILE:HD11	2.00	0.41
5:I:448:SER:OG	5:I:449:GLY:N	2.52	0.41
3:J:710:LEU:HG	3:J:716:LEU:HD21	2.02	0.41
7:V:174:ASN:O	7:V:208:THR:OG1	2.30	0.41
7:Y:3:ARG:HB2	7:Y:133:GLU:HB2	2.02	0.41
7:Z:106:SER:HA	7:Z:410:LYS:HE2	2.03	0.41
4:G:313:LEU:HD23	4:G:319:LEU:HD21	2.01	0.41
4:G:432:TYR:HB3	4:G:451:LEU:HD11	2.01	0.41
4:G:560:ARG:HB2	7:V:339:ARG:NH1	2.35	0.41
3:J:992:MET:HA	3:J:995:VAL:HG22	2.03	0.41
6:L:1478:ARG:HA	6:L:1481:THR:HG23	2.03	0.41
7:U:337:LEU:HD12	7:U:337:LEU:HA	1.95	0.41
7:W:352:GLY:HA3	7:W:353:PRO:HD3	1.85	0.41
7:Y:187:ASN:O	7:Y:191:THR:OG1	2.31	0.41
4:G:168:LYS:HG3	4:G:170:SER:H	1.85	0.41
4:G:637:ARG:HD2	4:G:734:LEU:HD21	2.03	0.41
2:H:419:LEU:HA	2:H:422:VAL:HG22	2.02	0.41
2:H:592:LEU:HD23	2:H:592:LEU:HA	1.86	0.41
7:U:3:ARG:HB2	7:U:133:GLU:HB2	2.02	0.41
7:V:106:SER:HA	7:V:410:LYS:HE2	2.03	0.41
7:V:187:ASN:O	7:V:191:THR:OG1	2.31	0.41
7:W:3:ARG:HB2	7:W:133:GLU:HB2	2.02	0.41
7:Z:241:THR:OG1	7:Z:244:ARG:NH2	2.53	0.41
4:G:381:LYS:HG2	4:G:476:ILE:HD12	2.03	0.41
3:J:902:MET:SD	3:J:903:THR:OG1	2.66	0.41
7:X:241:THR:OG1	7:X:244:ARG:NH2	2.53	0.41
2:H:686:CYS:SG	2:H:687:ASN:N	2.93	0.41
7:Y:9:GLN:HE22	7:Y:64:ALA:HB1	1.84	0.41
7:Y:56:ASP:OD1	7:Y:56:ASP:N	2.54	0.41
4:G:864:PHE:O	4:G:866:THR:OG1	2.33	0.41
5:I:380:LEU:HD12	5:I:381:LYS:HG3	2.01	0.41
3:J:819:LYS:O	3:J:823:GLN:HG2	2.21	0.41
5:K:155:GLU:HA	5:K:158:TYR:HB3	2.03	0.41
6:L:1588:PRO:HB2	6:L:1737:LEU:HD23	2.03	0.41
7:V:3:ARG:HB2	7:V:133:GLU:HB2	2.02	0.41
7:W:52:PHE:HB3	7:W:60:TYR:HB3	2.03	0.41
7:U:106:SER:HA	7:U:410:LYS:HE2	2.03	0.41
7:W:287:LYS:HD2	7:W:287:LYS:HA	1.88	0.41
7:W:337:LEU:HD12	7:W:337:LEU:HA	1.96	0.41
7:X:287:LYS:HA	7:X:287:LYS:HD2	1.88	0.41
2:H:364:LEU:N	2:H:367:LEU:H	2.15	0.40

Continued on next page...

Continued from previous page...

Atom-1	Atom-2	Interatomic distance (Å)	Clash overlap (Å)
5:I:150:GLY:HA2	5:I:202:GLU:HA	2.03	0.40
6:L:295:ARG:HD2	6:L:303:PRO:HD2	2.03	0.40
7:W:106:SER:HA	7:W:410:LYS:HE2	2.03	0.40
7:Y:52:PHE:HB3	7:Y:60:TYR:HB3	2.03	0.40
4:G:446:MET:SD	4:G:446:MET:N	2.94	0.40
2:H:433:TRP:CE2	2:H:487:GLY:HA3	2.55	0.40
5:K:459:VAL:HG11	5:K:467:PHE:HB2	2.02	0.40
6:L:1680:ILE:HD11	6:L:1716:GLY:HA2	2.03	0.40
7:V:241:THR:OG1	7:V:244:ARG:NH2	2.53	0.40
7:W:118:ILE:HA	7:W:121:ILE:HD12	2.04	0.40
7:W:156:ARG:HA	7:W:156:ARG:HD3	1.89	0.40
7:X:52:PHE:HB3	7:X:60:TYR:HB3	2.03	0.40
7:Z:52:PHE:HB3	7:Z:60:TYR:HB3	2.03	0.40
5:I:404:LEU:HA	5:I:404:LEU:HD12	1.77	0.40
7:U:241:THR:OG1	7:U:244:ARG:NH2	2.53	0.40
7:Y:106:SER:HA	7:Y:410:LYS:HE2	2.03	0.40
7:Y:252:ASP:OD1	7:Y:252:ASP:N	2.48	0.40
4:G:248:VAL:HG11	4:G:260:VAL:HG11	2.02	0.40
2:H:720:TYR:HE2	7:V:357:GLN:HB3	1.86	0.40
7:Y:118:ILE:HA	7:Y:121:ILE:HD12	2.04	0.40
7:Z:56:ASP:OD1	7:Z:56:ASP:N	2.54	0.40

There are no symmetry-related clashes.

5.3 Torsion angles [\(i\)](#)

5.3.1 Protein backbone [\(i\)](#)

In the following table, the Percentiles column shows the percent Ramachandran outliers of the chain as a percentile score with respect to all PDB entries followed by that with respect to all EM entries.

The Analysed column shows the number of residues for which the backbone conformation was analysed, and the total number of residues.

Mol	Chain	Analysed	Favoured	Allowed	Outliers	Percentiles	
1	b	63/82 (77%)	62 (98%)	1 (2%)	0	100	100
1	m	63/82 (77%)	62 (98%)	1 (2%)	0	100	100
2	H	584/907 (64%)	566 (97%)	17 (3%)	1 (0%)	47	81
2	a	112/907 (12%)	108 (96%)	4 (4%)	0	100	100

Continued on next page...

Continued from previous page...

Mol	Chain	Analysed	Favoured	Allowed	Outliers	Percentiles	
3	J	506/1024 (49%)	474 (94%)	30 (6%)	2 (0%)	34	72
3	l	104/1024 (10%)	100 (96%)	2 (2%)	2 (2%)	8	40
4	G	624/902 (69%)	593 (95%)	29 (5%)	2 (0%)	41	76
5	I	511/667 (77%)	486 (95%)	19 (4%)	6 (1%)	13	50
5	K	548/667 (82%)	533 (97%)	13 (2%)	2 (0%)	34	72
6	L	540/1819 (30%)	507 (94%)	29 (5%)	4 (1%)	22	62
7	U	408/451 (90%)	387 (95%)	21 (5%)	0	100	100
7	V	408/451 (90%)	387 (95%)	21 (5%)	0	100	100
7	W	408/451 (90%)	387 (95%)	21 (5%)	0	100	100
7	X	408/451 (90%)	387 (95%)	21 (5%)	0	100	100
7	Y	408/451 (90%)	387 (95%)	21 (5%)	0	100	100
7	Z	408/451 (90%)	387 (95%)	21 (5%)	0	100	100
All	All	6103/10787 (57%)	5813 (95%)	271 (4%)	19 (0%)	44	76

All (19) Ramachandran outliers are listed below:

Mol	Chain	Res	Type
4	G	241	ARG
4	G	581	ASP
5	I	408	ASP
5	I	601	LEU
3	J	236	LEU
3	J	238	LEU
2	H	455	LYS
5	I	405	LEU
6	L	307	ARG
6	L	1806	ASN
5	I	409	ASN
3	l	120	SER
5	I	404	LEU
5	K	409	ASN
6	L	309	GLU
5	K	410	LEU
5	I	13	PRO
6	L	310	PRO
3	l	129	THR

5.3.2 Protein sidechains [i](#)

In the following table, the Percentiles column shows the percent sidechain outliers of the chain as a percentile score with respect to all PDB entries followed by that with respect to all EM entries.

The Analysed column shows the number of residues for which the sidechain conformation was analysed, and the total number of residues.

Mol	Chain	Analysed	Rotameric	Outliers	Percentiles	
1	b	53/62 (86%)	42 (79%)	11 (21%)	1	7
1	m	53/62 (86%)	42 (79%)	11 (21%)	1	7
2	H	539/798 (68%)	539 (100%)	0	100	100
2	a	101/798 (13%)	100 (99%)	1 (1%)	76	86
3	J	498/933 (53%)	498 (100%)	0	100	100
3	l	96/933 (10%)	95 (99%)	1 (1%)	76	86
4	G	572/791 (72%)	570 (100%)	2 (0%)	92	95
5	I	472/594 (80%)	472 (100%)	0	100	100
5	K	509/594 (86%)	506 (99%)	3 (1%)	86	91
6	L	501/1546 (32%)	500 (100%)	1 (0%)	93	96
7	U	376/400 (94%)	344 (92%)	32 (8%)	10	35
7	V	376/400 (94%)	345 (92%)	31 (8%)	11	36
7	W	376/400 (94%)	344 (92%)	32 (8%)	10	35
7	X	376/400 (94%)	345 (92%)	31 (8%)	11	36
7	Y	376/400 (94%)	345 (92%)	31 (8%)	11	36
7	Z	376/400 (94%)	345 (92%)	31 (8%)	11	36
All	All	5650/9511 (59%)	5432 (96%)	218 (4%)	36	56

All (218) residues with a non-rotameric sidechain are listed below:

Mol	Chain	Res	Type
1	m	21	VAL
1	m	25	MET
1	m	30	GLU
1	m	31	ILE
1	m	34	ILE
1	m	37	THR
1	m	39	LEU
1	m	43	THR

Continued on next page...

Continued from previous page...

Mol	Chain	Res	Type
1	m	45	SER
1	m	47	CYS
1	m	67	LEU
2	a	37	ARG
1	b	21	VAL
1	b	25	MET
1	b	30	GLU
1	b	31	ILE
1	b	34	ILE
1	b	37	THR
1	b	39	LEU
1	b	43	THR
1	b	45	SER
1	b	47	CYS
1	b	67	LEU
3	l	52	ARG
4	G	497	LYS
4	G	557	LEU
5	K	381	LYS
5	K	558	ARG
5	K	594	CYS
6	L	598	CYS
7	U	10	LEU
7	U	37	VAL
7	U	57	ASP
7	U	120	ASP
7	U	176	ASP
7	U	183	VAL
7	U	188	SER
7	U	222	ASN
7	U	224	SER
7	U	249	MET
7	U	265	ARG
7	U	274	THR
7	U	288	THR
7	U	301	LYS
7	U	305	VAL
7	U	321	LEU
7	U	328	VAL
7	U	331	THR
7	U	333	VAL
7	U	341	ARG

Continued on next page...

Continued from previous page...

Mol	Chain	Res	Type
7	U	347	ASN
7	U	361	SER
7	U	373	VAL
7	U	374	SER
7	U	383	SER
7	U	413	MET
7	U	422	ASP
7	U	425	ARG
7	U	426	GLU
7	U	440	ARG
7	U	442	ASP
7	U	446	TRP
7	V	10	LEU
7	V	37	VAL
7	V	57	ASP
7	V	120	ASP
7	V	176	ASP
7	V	183	VAL
7	V	188	SER
7	V	222	ASN
7	V	224	SER
7	V	249	MET
7	V	265	ARG
7	V	288	THR
7	V	301	LYS
7	V	305	VAL
7	V	321	LEU
7	V	328	VAL
7	V	331	THR
7	V	333	VAL
7	V	341	ARG
7	V	347	ASN
7	V	361	SER
7	V	373	VAL
7	V	374	SER
7	V	383	SER
7	V	413	MET
7	V	422	ASP
7	V	425	ARG
7	V	426	GLU
7	V	440	ARG
7	V	442	ASP

Continued on next page...

Continued from previous page...

Mol	Chain	Res	Type
7	V	446	TRP
7	W	10	LEU
7	W	37	VAL
7	W	57	ASP
7	W	120	ASP
7	W	176	ASP
7	W	183	VAL
7	W	188	SER
7	W	222	ASN
7	W	224	SER
7	W	249	MET
7	W	265	ARG
7	W	274	THR
7	W	288	THR
7	W	301	LYS
7	W	305	VAL
7	W	321	LEU
7	W	328	VAL
7	W	331	THR
7	W	333	VAL
7	W	341	ARG
7	W	347	ASN
7	W	361	SER
7	W	373	VAL
7	W	374	SER
7	W	383	SER
7	W	413	MET
7	W	422	ASP
7	W	425	ARG
7	W	426	GLU
7	W	440	ARG
7	W	442	ASP
7	W	446	TRP
7	X	10	LEU
7	X	37	VAL
7	X	57	ASP
7	X	120	ASP
7	X	176	ASP
7	X	183	VAL
7	X	188	SER
7	X	222	ASN
7	X	224	SER

Continued on next page...

Continued from previous page...

Mol	Chain	Res	Type
7	X	249	MET
7	X	265	ARG
7	X	288	THR
7	X	301	LYS
7	X	305	VAL
7	X	321	LEU
7	X	328	VAL
7	X	331	THR
7	X	333	VAL
7	X	341	ARG
7	X	347	ASN
7	X	361	SER
7	X	373	VAL
7	X	374	SER
7	X	383	SER
7	X	413	MET
7	X	422	ASP
7	X	425	ARG
7	X	426	GLU
7	X	440	ARG
7	X	442	ASP
7	X	446	TRP
7	Y	10	LEU
7	Y	37	VAL
7	Y	57	ASP
7	Y	120	ASP
7	Y	176	ASP
7	Y	183	VAL
7	Y	188	SER
7	Y	222	ASN
7	Y	224	SER
7	Y	249	MET
7	Y	265	ARG
7	Y	288	THR
7	Y	301	LYS
7	Y	305	VAL
7	Y	321	LEU
7	Y	328	VAL
7	Y	331	THR
7	Y	333	VAL
7	Y	341	ARG
7	Y	347	ASN

Continued on next page...

Continued from previous page...

Mol	Chain	Res	Type
7	Y	361	SER
7	Y	373	VAL
7	Y	374	SER
7	Y	383	SER
7	Y	413	MET
7	Y	422	ASP
7	Y	425	ARG
7	Y	426	GLU
7	Y	440	ARG
7	Y	442	ASP
7	Y	446	TRP
7	Z	10	LEU
7	Z	37	VAL
7	Z	57	ASP
7	Z	120	ASP
7	Z	176	ASP
7	Z	183	VAL
7	Z	188	SER
7	Z	222	ASN
7	Z	224	SER
7	Z	249	MET
7	Z	265	ARG
7	Z	288	THR
7	Z	301	LYS
7	Z	305	VAL
7	Z	321	LEU
7	Z	328	VAL
7	Z	331	THR
7	Z	333	VAL
7	Z	341	ARG
7	Z	347	ASN
7	Z	361	SER
7	Z	373	VAL
7	Z	374	SER
7	Z	383	SER
7	Z	413	MET
7	Z	422	ASP
7	Z	425	ARG
7	Z	426	GLU
7	Z	440	ARG
7	Z	442	ASP
7	Z	446	TRP

Sometimes sidechains can be flipped to improve hydrogen bonding and reduce clashes. All (96) such sidechains are listed below:

Mol	Chain	Res	Type
2	a	14	GLN
2	a	82	HIS
2	a	84	GLN
3	l	38	GLN
3	l	47	ASN
3	l	107	HIS
4	G	166	ASN
4	G	213	GLN
4	G	242	GLN
4	G	261	HIS
4	G	309	GLN
4	G	312	GLN
4	G	314	HIS
4	G	316	GLN
4	G	401	HIS
4	G	585	GLN
4	G	639	GLN
4	G	662	ASN
4	G	741	ASN
2	H	273	ASN
2	H	347	GLN
2	H	387	HIS
2	H	461	HIS
2	H	558	HIS
2	H	560	GLN
2	H	684	HIS
2	H	702	HIS
2	H	705	HIS
5	I	142	GLN
5	I	149	HIS
5	I	284	GLN
5	I	317	GLN
5	I	563	HIS
5	I	567	ASN
5	I	581	HIS
5	I	622	GLN
3	J	219	HIS
3	J	222	HIS
3	J	822	ASN
3	J	830	GLN
3	J	938	HIS

Continued on next page...

Continued from previous page...

Mol	Chain	Res	Type
5	K	109	GLN
5	K	128	GLN
5	K	200	HIS
5	K	256	GLN
5	K	316	GLN
5	K	571	GLN
6	L	327	HIS
6	L	430	GLN
6	L	517	HIS
6	L	590	HIS
6	L	1654	GLN
6	L	1702	GLN
6	L	1705	HIS
6	L	1767	GLN
6	L	1770	ASN
6	L	1803	ASN
6	L	1805	ASN
7	U	16	GLN
7	U	102	ASN
7	U	187	ASN
7	U	227	GLN
7	U	229	ASN
7	U	334	HIS
7	U	338	GLN
7	V	16	GLN
7	V	102	ASN
7	V	103	ASN
7	V	187	ASN
7	V	227	GLN
7	V	229	ASN
7	W	16	GLN
7	W	102	ASN
7	W	103	ASN
7	W	187	ASN
7	W	227	GLN
7	W	229	ASN
7	X	16	GLN
7	X	102	ASN
7	X	187	ASN
7	X	227	GLN
7	X	229	ASN
7	Y	16	GLN

Continued on next page...

Continued from previous page...

Mol	Chain	Res	Type
7	Y	59	HIS
7	Y	102	ASN
7	Y	187	ASN
7	Y	227	GLN
7	Y	229	ASN
7	Y	338	GLN
7	Z	16	GLN
7	Z	59	HIS
7	Z	102	ASN
7	Z	187	ASN
7	Z	227	GLN
7	Z	229	ASN
7	Z	338	GLN

5.3.3 RNA [i](#)

There are no RNA molecules in this entry.

5.4 Non-standard residues in protein, DNA, RNA chains [i](#)

There are no non-standard protein/DNA/RNA residues in this entry.

5.5 Carbohydrates [i](#)

There are no monosaccharides in this entry.

5.6 Ligand geometry [i](#)

There are no ligands in this entry.

5.7 Other polymers [i](#)

There are no such residues in this entry.

5.8 Polymer linkage issues [i](#)

There are no chain breaks in this entry.

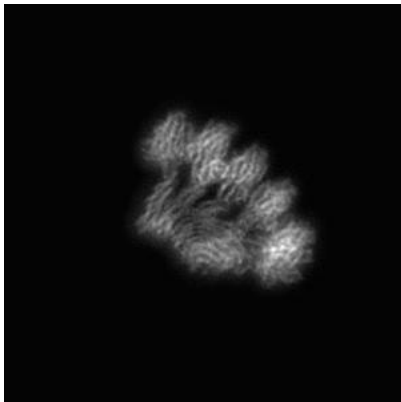
6 Map visualisation [i](#)

This section contains visualisations of the EMDB entry EMD-14005. These allow visual inspection of the internal detail of the map and identification of artifacts.

No raw map or half-maps were deposited for this entry and therefore no images, graphs, etc. pertaining to the raw map can be shown.

6.1 Orthogonal projections [i](#)

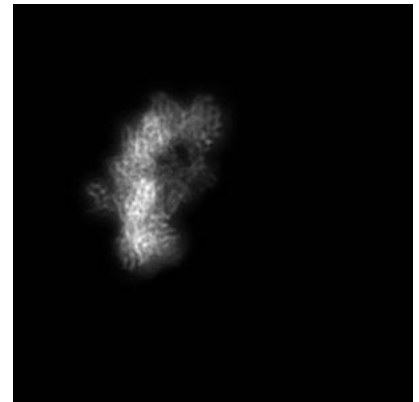
6.1.1 Primary map



X



Y

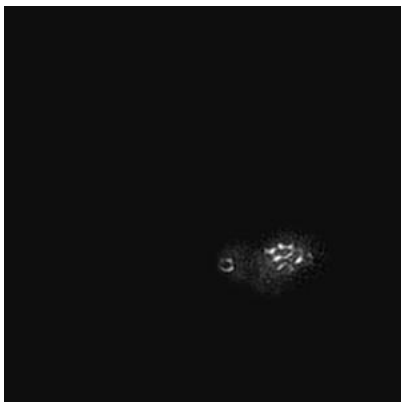


Z

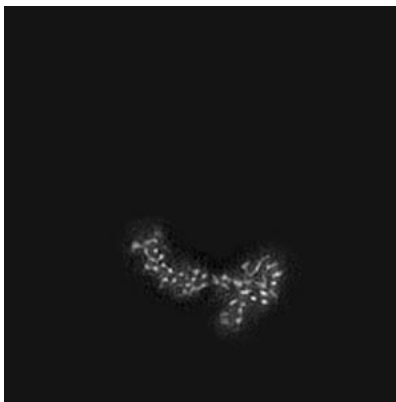
The images above show the map projected in three orthogonal directions.

6.2 Central slices [i](#)

6.2.1 Primary map



X Index: 100



Y Index: 100

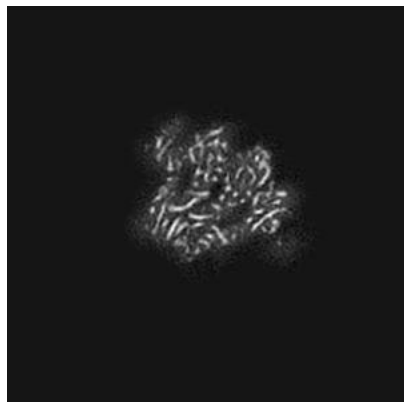


Z Index: 100

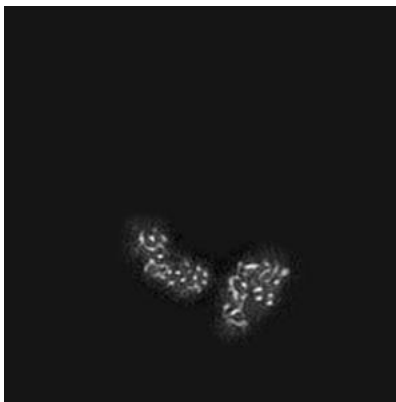
The images above show central slices of the map in three orthogonal directions.

6.3 Largest variance slices [i](#)

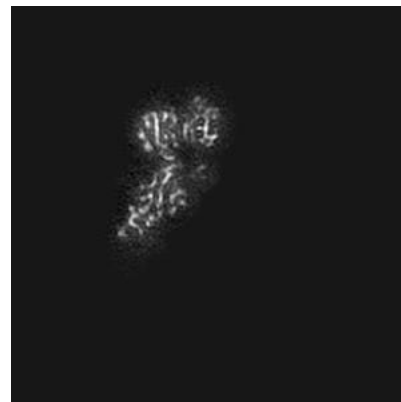
6.3.1 Primary map



X Index: 62



Y Index: 103



Z Index: 77

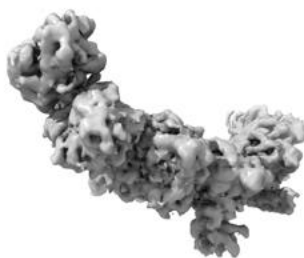
The images above show the largest variance slices of the map in three orthogonal directions.

6.4 Orthogonal surface views [i](#)

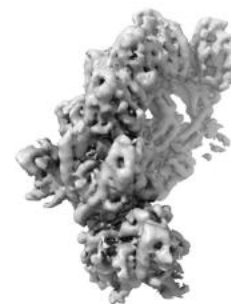
6.4.1 Primary map



X



Y



Z

The images above show the 3D surface view of the map at the recommended contour level 0.0468. These images, in conjunction with the slice images, may facilitate assessment of whether an appropriate contour level has been provided.

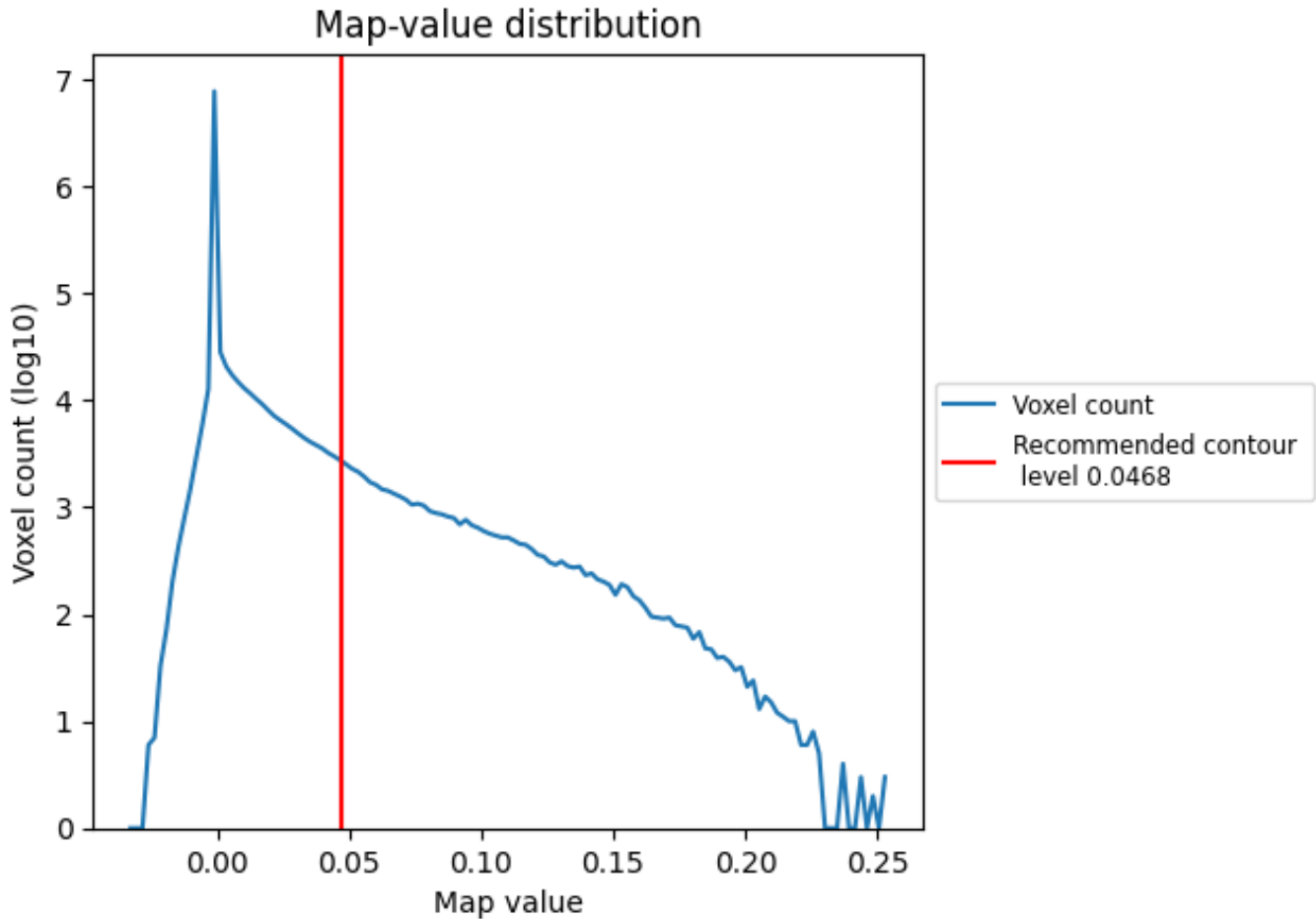
6.5 Mask visualisation

This section was not generated. No masks/segmentation were deposited.

7 Map analysis [i](#)

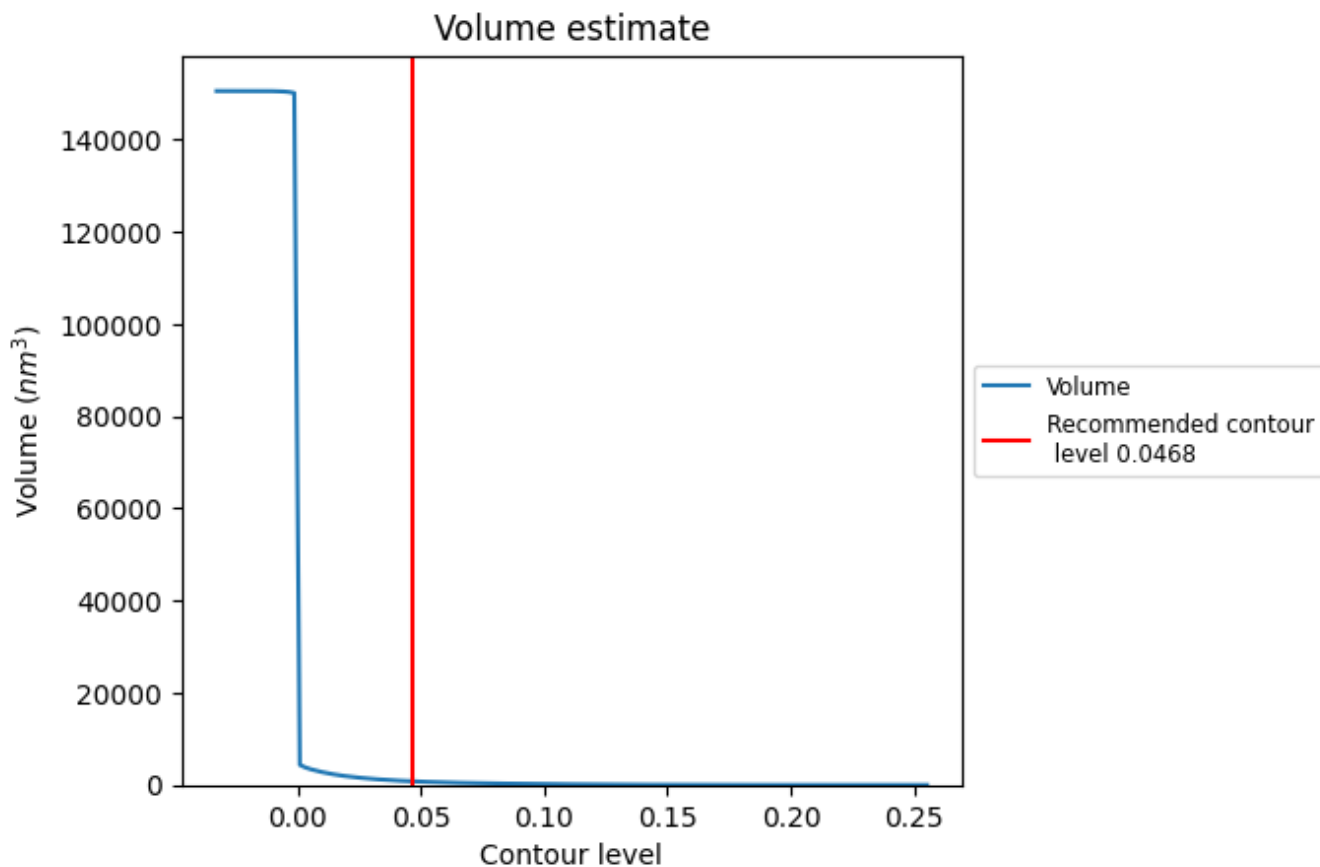
This section contains the results of statistical analysis of the map.

7.1 Map-value distribution [i](#)



The map-value distribution is plotted in 128 intervals along the x-axis. The y-axis is logarithmic. A spike in this graph at zero usually indicates that the volume has been masked.

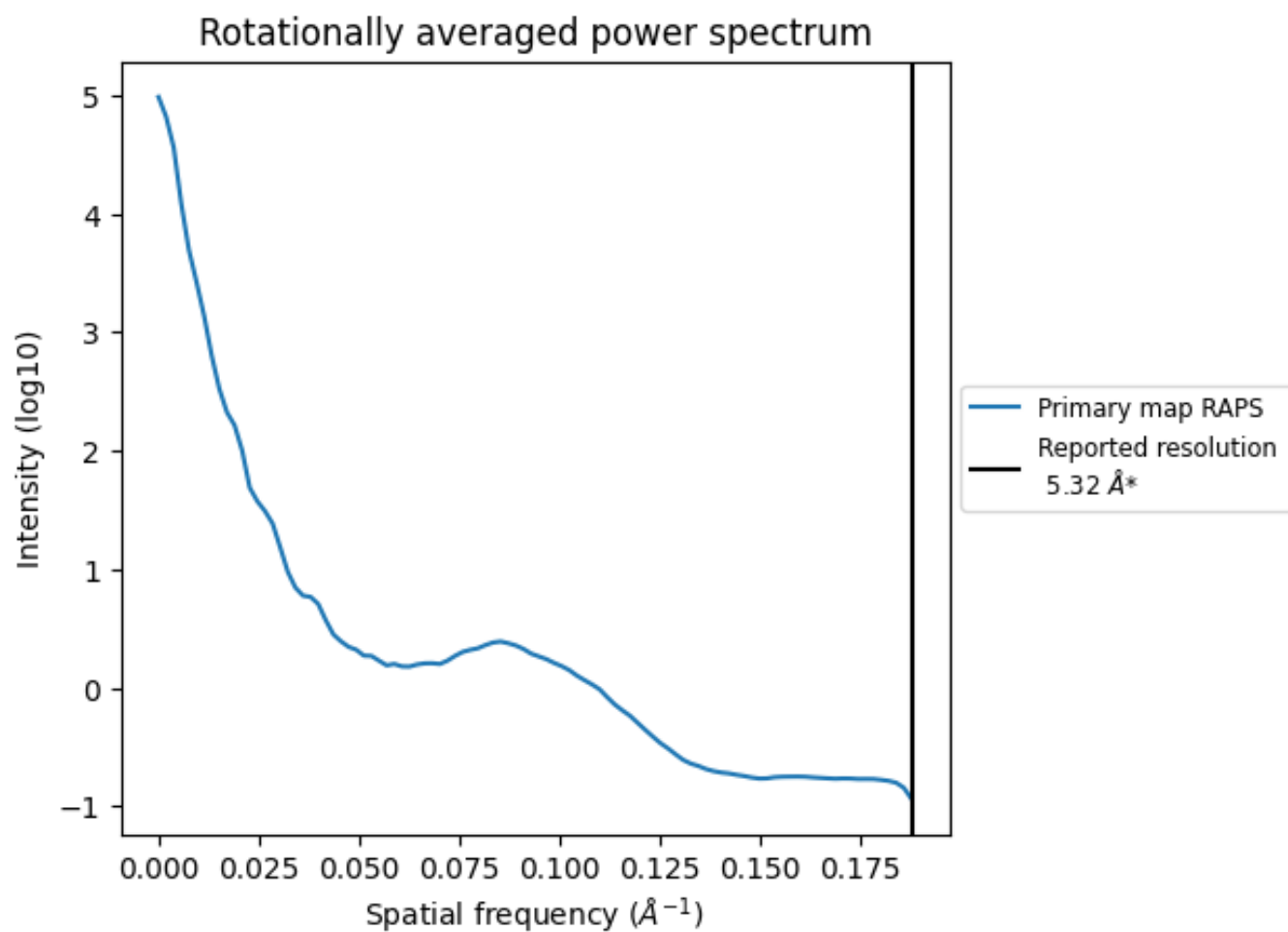
7.2 Volume estimate [i](#)



The volume at the recommended contour level is 786 nm^3 ; this corresponds to an approximate mass of 710 kDa.

The volume estimate graph shows how the enclosed volume varies with the contour level. The recommended contour level is shown as a vertical line and the intersection between the line and the curve gives the volume of the enclosed surface at the given level.

7.3 Rotationally averaged power spectrum [i](#)



*Reported resolution corresponds to spatial frequency of 0.188 Å⁻¹

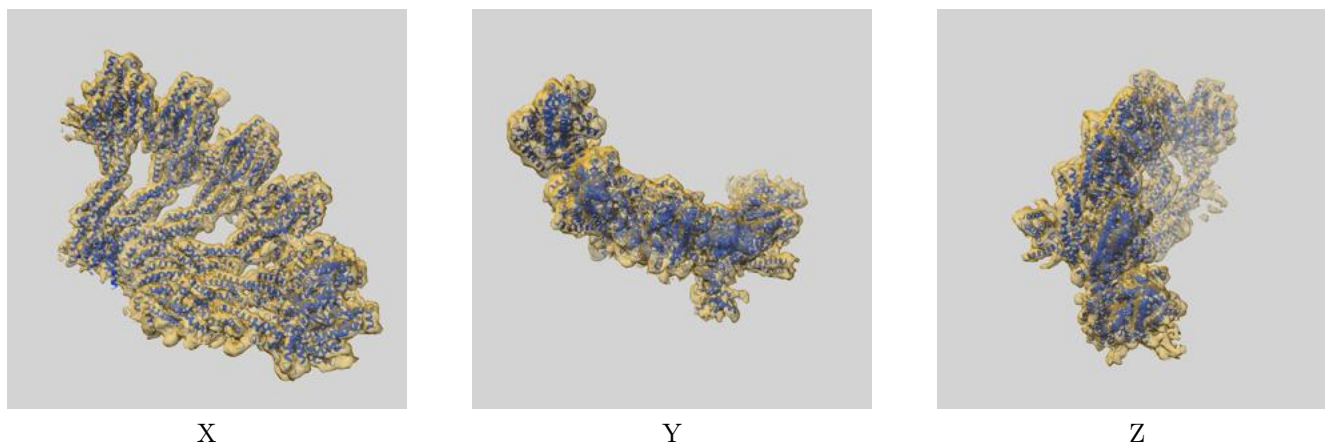
8 Fourier-Shell correlation

This section was not generated. No FSC curve or half-maps provided.

9 Map-model fit [i](#)

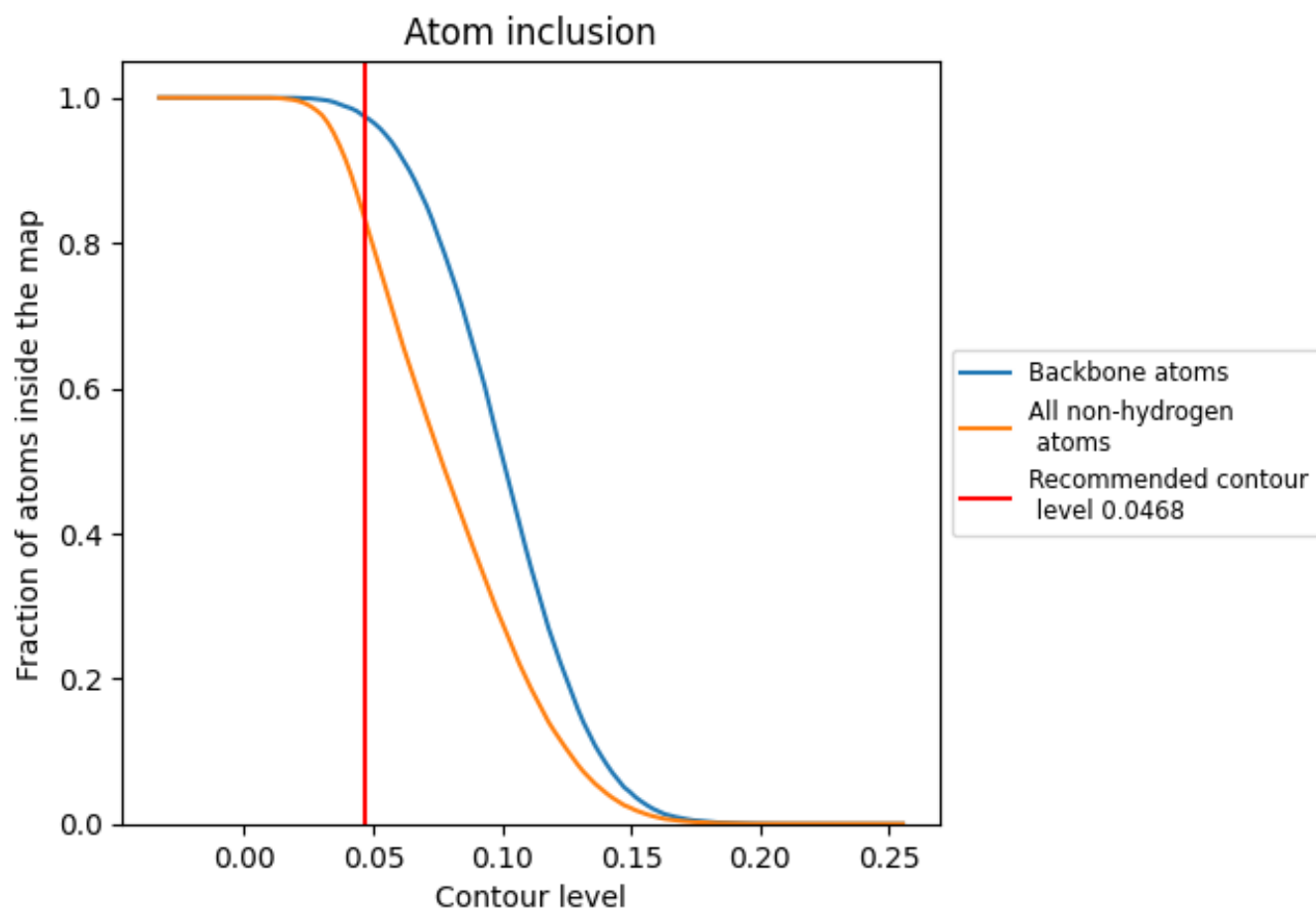
This section contains information regarding the fit between EMDB map EMD-14005 and PDB model 7QJ0. Per-residue inclusion information can be found in section 3 on page 6.

9.1 Map-model overlay [i](#)



The images above show the 3D surface view of the map at the recommended contour level 0.0468 at 50% transparency in yellow overlaid with a ribbon representation of the model coloured in blue. These images allow for the visual assessment of the quality of fit between the atomic model and the map.

9.2 Atom inclusion [i](#)



At the recommended contour level, 97% of all backbone atoms, 83% of all non-hydrogen atoms, are inside the map.