



Full wwPDB X-ray Structure Validation Report ⓘ

Sep 2, 2023 – 01:44 PM EDT

PDB ID : 3QMO
Title : X-ray crystal structure of NS-398 bound to the cyclooxygenase channel of cyclooxygenase-2
Authors : Vecchio, A.J.; Malkowski, M.G.
Deposited on : 2011-02-04
Resolution : 3.00 Å(reported)

This is a Full wwPDB X-ray Structure Validation Report for a publicly released PDB entry.

We welcome your comments at validation@mail.wwpdb.org

A user guide is available at

<https://www.wwpdb.org/validation/2017/XrayValidationReportHelp>

with specific help available everywhere you see the ⓘ symbol.

The types of validation reports are described at

<http://www.wwpdb.org/validation/2017/FAQs#types>.

The following versions of software and data (see [references ⓘ](#)) were used in the production of this report:

MolProbity : 4.02b-467
Mogul : 1.8.5 (274361), CSD as541be (2020)
Xtriage (Phenix) : 1.13
EDS : 2.35
buster-report : 1.1.7 (2018)
Percentile statistics : 20191225.v01 (using entries in the PDB archive December 25th 2019)
Refmac : 5.8.0158
CCP4 : 7.0.044 (Gargrove)
Ideal geometry (proteins) : Engh & Huber (2001)
Ideal geometry (DNA, RNA) : Parkinson et al. (1996)
Validation Pipeline (wwPDB-VP) : 2.35

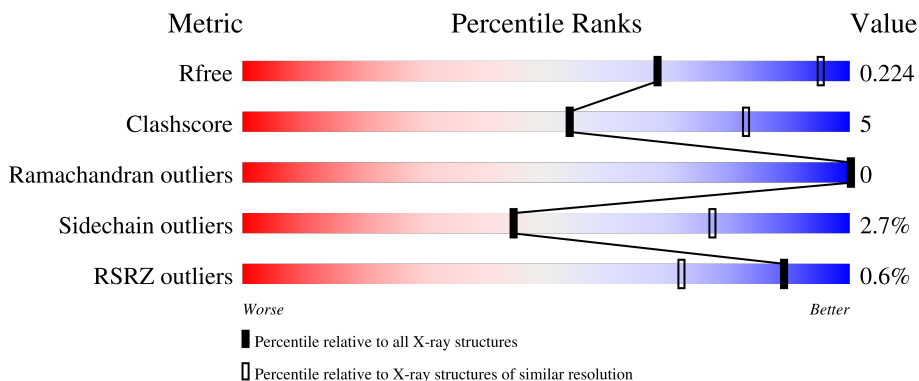
1 Overall quality at a glance i

The following experimental techniques were used to determine the structure:

X-RAY DIFFRACTION

The reported resolution of this entry is 3.00 Å.

Percentile scores (ranging between 0-100) for global validation metrics of the entry are shown in the following graphic. The table shows the number of entries on which the scores are based.




Metric	Whole archive (#Entries)	Similar resolution (#Entries, resolution range(Å))
R_{free}	130704	2092 (3.00-3.00)
Clashscore	141614	2416 (3.00-3.00)
Ramachandran outliers	138981	2333 (3.00-3.00)
Sidechain outliers	138945	2336 (3.00-3.00)
RSRZ outliers	127900	1990 (3.00-3.00)

The table below summarises the geometric issues observed across the polymeric chains and their fit to the electron density. The red, orange, yellow and green segments of the lower bar indicate the fraction of residues that contain outliers for ≥ 3 , 2, 1 and 0 types of geometric quality criteria respectively. A grey segment represents the fraction of residues that are not modelled. The numeric value for each fraction is indicated below the corresponding segment, with a dot representing fractions $\leq 5\%$. The upper red bar (where present) indicates the fraction of residues that have poor fit to the electron density. The numeric value is given above the bar.

Mol	Chain	Length	Quality of chain
1	A	610	
1	B	610	
2	C	2	
2	E	2	
3	D	2	

Continued on next page...

Continued from previous page...

Mol	Chain	Length	Quality of chain
4	F	3	

The following table lists non-polymeric compounds, carbohydrate monomers and non-standard residues in protein, DNA, RNA chains that are outliers for geometric or electron-density-fit criteria:

Mol	Type	Chain	Res	Chirality	Geometry	Clashes	Electron density
2	NDG	C	2	-	-	-	X
4	BMA	F	3	-	-	-	X

2 Entry composition [i](#)

There are 11 unique types of molecules in this entry. The entry contains 9237 atoms, of which 0 are hydrogens and 0 are deuteriums.

In the tables below, the ZeroOcc column contains the number of atoms modelled with zero occupancy, the AltConf column contains the number of residues with at least one atom in alternate conformation and the Trace column contains the number of residues modelled with at most 2 atoms.

- Molecule 1 is a protein called Prostaglandin G/H synthase 2.

Mol	Chain	Residues	Atoms					ZeroOcc	AltConf	Trace
			Total	C	N	O	S			
1	A	551	Total 4392	C 2840	N 736	O 791	S 25	0	3	0
1	B	551	Total 4379	C 2838	N 729	O 787	S 25	0	0	0

There are 14 discrepancies between the modelled and reference sequences:

Chain	Residue	Modelled	Actual	Comment	Reference
A	29	HIS	-	expression tag	UNP Q05769
A	30	HIS	-	expression tag	UNP Q05769
A	31	HIS	-	expression tag	UNP Q05769
A	32	HIS	-	expression tag	UNP Q05769
A	33	HIS	-	expression tag	UNP Q05769
A	34	HIS	-	expression tag	UNP Q05769
A	594	ALA	ASN	engineered mutation	UNP Q05769
B	29	HIS	-	expression tag	UNP Q05769
B	30	HIS	-	expression tag	UNP Q05769
B	31	HIS	-	expression tag	UNP Q05769
B	32	HIS	-	expression tag	UNP Q05769
B	33	HIS	-	expression tag	UNP Q05769
B	34	HIS	-	expression tag	UNP Q05769
B	594	ALA	ASN	engineered mutation	UNP Q05769

- Molecule 2 is an oligosaccharide called 2-acetamido-2-deoxy-alpha-D-glucopyranose-(1-4)-2-acetamido-2-deoxy-beta-D-glucopyranose.



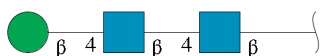
Mol	Chain	Residues	Atoms				ZeroOcc	AltConf	Trace
2	C	2	Total	C	N	O	0	0	0
			28	16	2	10			
2	E	2	Total	C	N	O	0	0	0
			28	16	2	10			

- Molecule 3 is an oligosaccharide called 2-acetamido-2-deoxy-beta-D-glucopyranose-(1-4)-2-acetamido-2-deoxy-beta-D-glucopyranose.



Mol	Chain	Residues	Atoms				ZeroOcc	AltConf	Trace
3	D	2	Total	C	N	O	0	0	0
			28	16	2	10			

- Molecule 4 is an oligosaccharide called beta-D-mannopyranose-(1-4)-2-acetamido-2-deoxy-beta-D-glucopyranose-(1-4)-2-acetamido-2-deoxy-beta-D-glucopyranose.



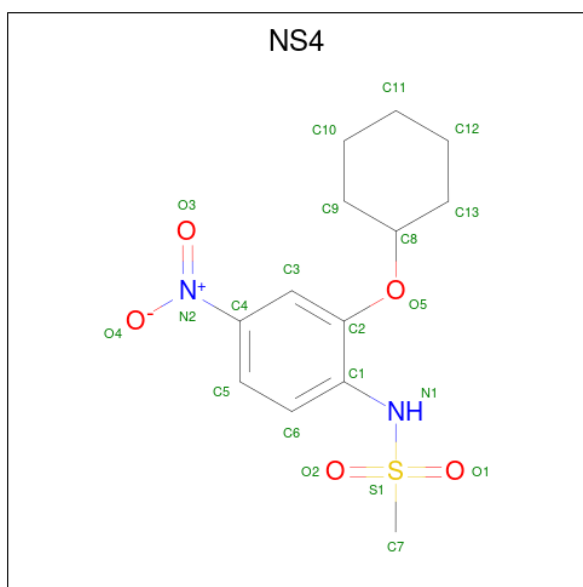
Mol	Chain	Residues	Atoms				ZeroOcc	AltConf	Trace
4	F	3	Total	C	N	O	0	0	0
			39	22	2	15			

- Molecule 5 is GLYCEROL (three-letter code: GOL) (formula: C₃H₈O₃).



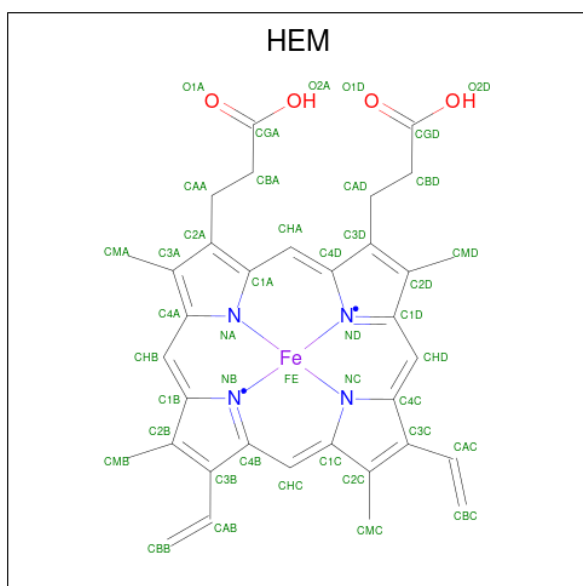
Mol	Chain	Residues	Atoms	ZeroOcc	AltConf
5	A	1	Total C O 6 3 3	0	0
5	A	1	Total C O 6 3 3	0	0
5	A	1	Total C O 6 3 3	0	0
5	B	1	Total C O 6 3 3	0	0
5	B	1	Total C O 6 3 3	0	0
5	B	1	Total C O 6 3 3	0	0

- Molecule 6 is N-[2-(cyclohexyloxy)-4-nitrophenyl]methanesulfonamide (three-letter code: NS4) (formula: C₁₃H₁₈N₂O₅S).



Mol	Chain	Residues	Atoms					ZeroOcc	AltConf
6	A	1	Total	C	N	O	S	0	0
			21	13	2	5	1		
6	B	1	Total	C	N	O	S	0	0
			21	13	2	5	1		

- Molecule 7 is PROTOPORPHYRIN IX CONTAINING FE (three-letter code: HEM) (formula: $C_{34}H_{32}FeN_4O_4$).



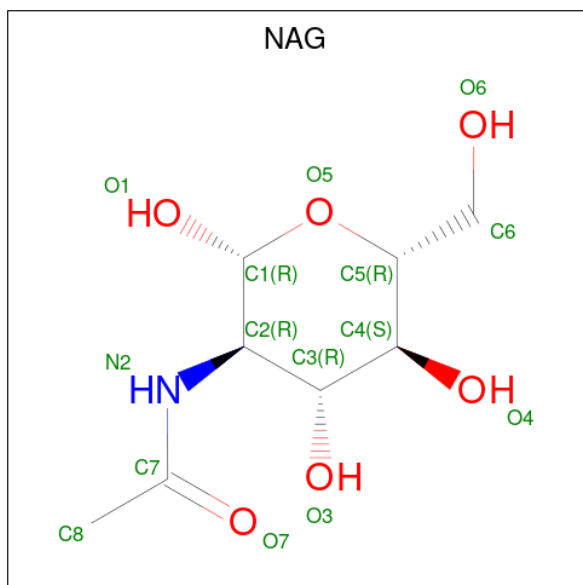
Mol	Chain	Residues	Atoms					ZeroOcc	AltConf
7	A	1	Total	C	Fe	N	O	0	0
			43	34	1	4	4		

Continued on next page...

Continued from previous page...

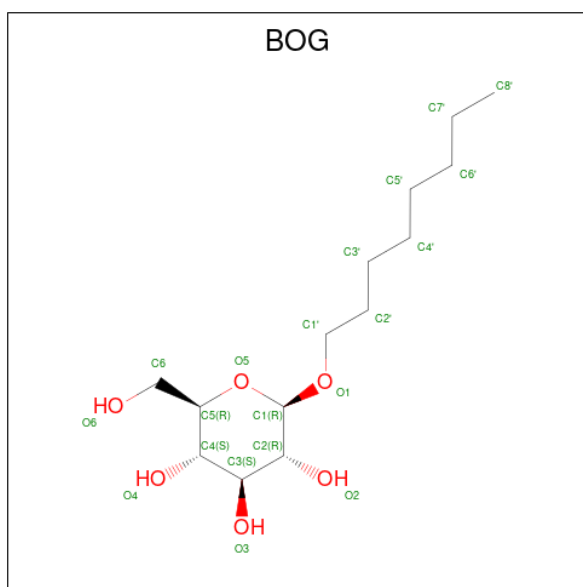
Mol	Chain	Residues	Atoms				ZeroOcc	AltConf	
			Total	C	Fe	N			O
7	B	1	43	34	1	4	4	0	0

- Molecule 8 is 2-acetamido-2-deoxy-beta-D-glucopyranose (three-letter code: NAG) (formula: $C_8H_{15}NO_6$).



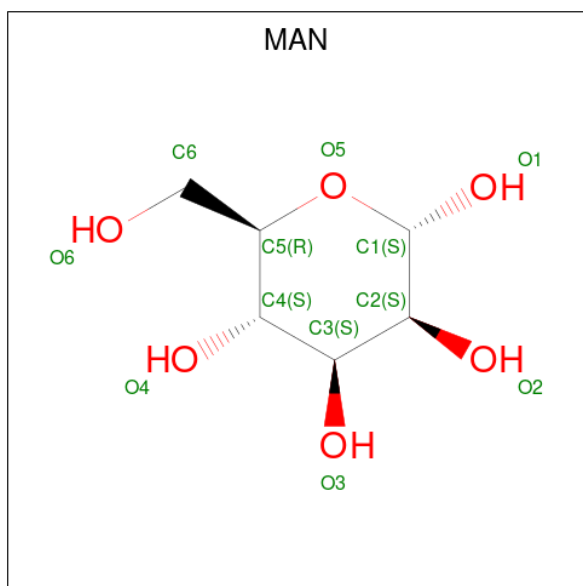
Mol	Chain	Residues	Atoms				ZeroOcc	AltConf
			Total	C	N	O		
8	A	1	14	8	1	5	0	0
8	B	1	14	8	1	5	0	0

- Molecule 9 is octyl beta-D-glucopyranoside (three-letter code: BOG) (formula: $C_{14}H_{28}O_6$).



Mol	Chain	Residues	Atoms			ZeroOcc	AltConf
9	A	1	Total	C	O	0	0
			20	14	6		

- Molecule 10 is alpha-D-mannopyranose (three-letter code: MAN) (formula: $C_6H_{12}O_6$).



Mol	Chain	Residues	Atoms			ZeroOcc	AltConf
10	B	1	Total	C	O	0	0
			11	6	5		

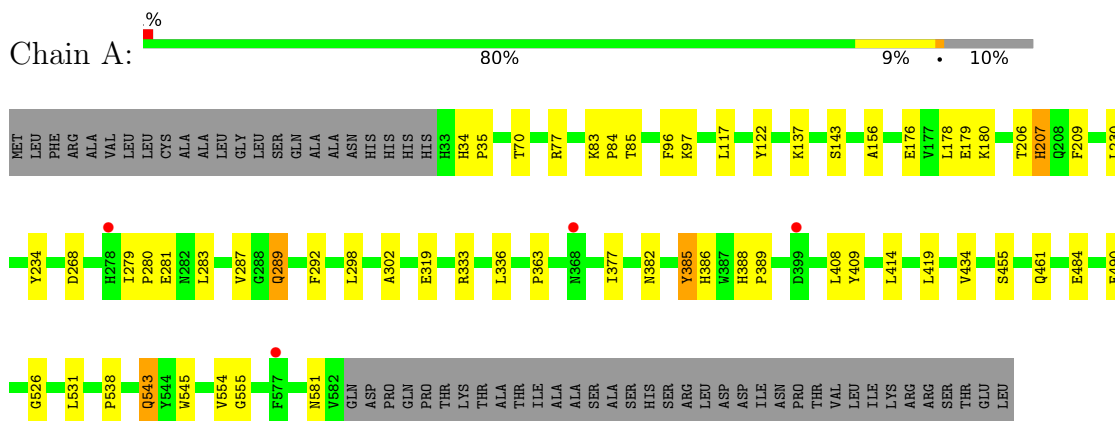
- Molecule 11 is water.

Mol	Chain	Residues	Atoms		ZeroOcc	AltConf
11	A	57	Total 57	O 57	0	0
11	B	63	Total 63	O 63	0	0

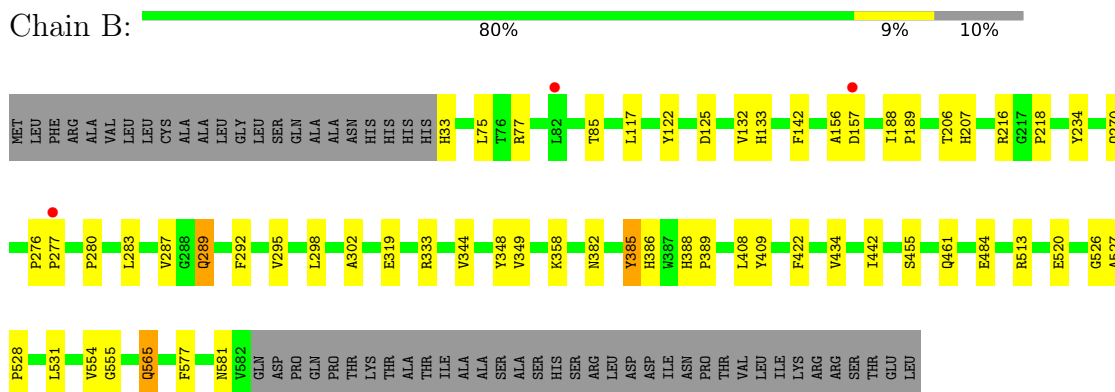
3 Residue-property plots [i](#)

These plots are drawn for all protein, RNA, DNA and oligosaccharide chains in the entry. The first graphic for a chain summarises the proportions of the various outlier classes displayed in the second graphic. The second graphic shows the sequence view annotated by issues in geometry and electron density. Residues are color-coded according to the number of geometric quality criteria for which they contain at least one outlier: green = 0, yellow = 1, orange = 2 and red = 3 or more. A red dot above a residue indicates a poor fit to the electron density ($RSRZ > 2$). Stretches of 2 or more consecutive residues without any outlier are shown as a green connector. Residues present in the sample, but not in the model, are shown in grey.

- Molecule 1: Prostaglandin G/H synthase 2



- Molecule 1: Prostaglandin G/H synthase 2



- Molecule 2: 2-acetamido-2-deoxy-alpha-D-glucopyranose-(1-4)-2-acetamido-2-deoxy-beta-D-glucopyranose




- Molecule 2: 2-acetamido-2-deoxy-alpha-D-glucopyranose-(1-4)-2-acetamido-2-deoxy-beta-D-glucopyranose

Chain E:  50% 50%

MAG1
MAG2

- Molecule 3: 2-acetamido-2-deoxy-beta-D-glucopyranose-(1-4)-2-acetamido-2-deoxy-beta-D-glucopyranose

Chain D:  50% 50%

MAG1
MAG2

- Molecule 4: beta-D-mannopyranose-(1-4)-2-acetamido-2-deoxy-beta-D-glucopyranose-(1-4)-2-acetamido-2-deoxy-beta-D-glucopyranose

Chain F:  33% 67%

MAG1
MAG2
BMA3

4 Data and refinement statistics

Property	Value	Source
Space group	I 2 2 2	Depositor
Cell constants a, b, c, α , β , γ	120.43Å 131.21Å 179.57Å 90.00° 90.00° 90.00°	Depositor
Resolution (Å)	19.99 – 3.00 19.99 – 3.00	Depositor EDS
% Data completeness (in resolution range)	99.8 (19.99-3.00) 99.8 (19.99-3.00)	Depositor EDS
R_{merge}	0.12	Depositor
R_{sym}	(Not available)	Depositor
$\langle I/\sigma(I) \rangle$ ¹	2.33 (at 2.98Å)	Xtrriage
Refinement program	REFMAC 5.5.0088	Depositor
R, R_{free}	0.176 , 0.225 0.175 , 0.224	Depositor DCC
R_{free} test set	1452 reflections (5.06%)	wwPDB-VP
Wilson B-factor (Å ²)	47.0	Xtrriage
Anisotropy	0.143	Xtrriage
Bulk solvent k_{sol} (e/Å ³), B_{sol} (Å ²)	0.38 , 52.2	EDS
L-test for twinning ²	$\langle L \rangle = 0.49$, $\langle L^2 \rangle = 0.31$	Xtrriage
Estimated twinning fraction	No twinning to report.	Xtrriage
F_o, F_c correlation	0.94	EDS
Total number of atoms	9237	wwPDB-VP
Average B, all atoms (Å ²)	34.0	wwPDB-VP

Xtrriage's analysis on translational NCS is as follows: *The largest off-origin peak in the Patterson function is 3.36% of the height of the origin peak. No significant pseudotranslation is detected.*

¹Intensities estimated from amplitudes.

²Theoretical values of $\langle |L| \rangle$, $\langle L^2 \rangle$ for acentric reflections are 0.5, 0.333 respectively for untwinned datasets, and 0.375, 0.2 for perfectly twinned datasets.

5 Model quality [i](#)

5.1 Standard geometry [i](#)

Bond lengths and bond angles in the following residue types are not validated in this section: BMA, NS4, HEM, BOG, NDG, GOL, MAN, NAG

The Z score for a bond length (or angle) is the number of standard deviations the observed value is removed from the expected value. A bond length (or angle) with $|Z| > 5$ is considered an outlier worth inspection. RMSZ is the root-mean-square of all Z scores of the bond lengths (or angles).

Mol	Chain	Bond lengths		Bond angles	
		RMSZ	# Z >5	RMSZ	# Z >5
1	A	0.52	0/4527	0.59	0/6158
1	B	0.51	0/4508	0.59	1/6130 (0.0%)
All	All	0.52	0/9035	0.59	1/12288 (0.0%)

There are no bond length outliers.

All (1) bond angle outliers are listed below:

Mol	Chain	Res	Type	Atoms	Z	Observed(°)	Ideal(°)
1	B	75	LEU	CA-CB-CG	5.44	127.82	115.30

There are no chirality outliers.

There are no planarity outliers.

5.2 Too-close contacts [i](#)

In the following table, the Non-H and H(model) columns list the number of non-hydrogen atoms and hydrogen atoms in the chain respectively. The H(added) column lists the number of hydrogen atoms added and optimized by MolProbity. The Clashes column lists the number of clashes within the asymmetric unit, whereas Symm-Clashes lists symmetry-related clashes.

Mol	Chain	Non-H	H(model)	H(added)	Clashes	Symm-Clashes
1	A	4392	0	4171	45	0
1	B	4379	0	4172	43	0
2	C	28	0	24	1	0
2	E	28	0	24	0	0
3	D	28	0	24	1	0
4	F	39	0	34	4	0
5	A	18	0	24	3	0
5	B	18	0	24	3	0

Continued on next page...

Continued from previous page...

Mol	Chain	Non-H	H(model)	H(added)	Clashes	Symm-Clashes
6	A	21	0	18	4	0
6	B	21	0	18	4	0
7	A	43	0	30	2	0
7	B	43	0	30	3	0
8	A	14	0	13	0	0
8	B	14	0	13	0	0
9	A	20	0	28	1	0
10	B	11	0	10	0	0
11	A	57	0	0	5	0
11	B	63	0	0	7	0
All	All	9237	0	8657	94	0

The all-atom clashscore is defined as the number of clashes found per 1000 atoms (including hydrogen atoms). The all-atom clashscore for this structure is 5.

All (94) close contacts within the same asymmetric unit are listed below, sorted by their clash magnitude.

Atom-1	Atom-2	Interatomic distance (Å)	Clash overlap (Å)
1:A:137[B]:LYS:H	1:A:137[B]:LYS:CD	1.51	1.18
1:A:137[B]:LYS:N	1:A:137[B]:LYS:HD2	1.50	1.14
7:A:620:HEM:HHA	7:A:620:HEM:HBA1	1.43	0.95
1:B:156:ALA:H	5:B:3:GOL:H32	1.33	0.91
1:A:543[A]:GLN:HA	1:A:543[A]:GLN:OE1	1.71	0.90
1:A:137[B]:LYS:H	1:A:137[B]:LYS:HD2	0.74	0.89
1:A:137[B]:LYS:HD3	11:B:663:HOH:O	1.84	0.77
6:A:619:NS4:O2	6:A:619:NS4:H6	1.90	0.71
1:A:319:GLU:HG3	1:A:554:VAL:HG11	1.73	0.69
1:B:319:GLU:HG3	1:B:554:VAL:HG11	1.75	0.67
1:B:526:GLY:HA3	6:B:1:NS4:H12	1.77	0.66
7:B:619:HEM:HBC2	7:B:619:HEM:HHD	1.77	0.66
1:B:295:VAL:HG21	7:B:619:HEM:HBB2	1.79	0.64
1:A:179:GLU:HB3	9:A:703:BOG:H3'1	1.81	0.63
1:A:156:ALA:H	5:A:1:GOL:H32	1.64	0.63
1:A:287:VAL:HG11	1:A:302:ALA:HB1	1.80	0.62
11:B:635:HOH:O	4:F:3:BMA:H61	2.01	0.60
1:B:216:ARG:NH1	4:F:2:NAG:H83	2.16	0.60
1:A:389:PRO:HB2	1:A:434:VAL:HA	1.83	0.60
1:B:289:GLN:HG2	1:B:292:PHE:CE1	2.38	0.58
1:B:287:VAL:HG11	1:B:302:ALA:HB1	1.86	0.57
1:A:382:ASN:O	1:A:386:HIS:HD2	1.88	0.57
1:A:77:ARG:NH1	11:A:673:HOH:O	2.38	0.57

Continued on next page...

Continued from previous page...

Atom-1	Atom-2	Interatomic distance (Å)	Clash overlap (Å)
1:A:289:GLN:HG2	1:A:292:PHE:CE1	2.40	0.56
1:A:268:ASP:CG	11:A:650:HOH:O	2.45	0.55
1:A:414:LEU:HD11	1:A:419:LEU:HD12	1.89	0.54
1:B:389:PRO:HB2	1:B:434:VAL:HA	1.90	0.53
1:B:218:PRO:HD2	11:B:666:HOH:O	2.10	0.52
1:B:77:ARG:NH1	11:B:680:HOH:O	2.43	0.51
1:A:143:SER:O	5:A:7:GOL:H12	2.10	0.51
6:B:1:NS4:O2	6:B:1:NS4:H6	2.10	0.51
1:A:234:TYR:CE2	1:A:333:ARG:HG3	2.47	0.50
1:A:531:LEU:HD11	6:A:619:NS4:H7	1.94	0.50
1:B:382:ASN:O	1:B:386:HIS:HD2	1.95	0.49
1:B:531:LEU:HD11	6:B:1:NS4:H7	1.92	0.49
1:B:234:TYR:CE2	1:B:333:ARG:HG3	2.48	0.48
1:A:137[B]:LYS:CD	11:B:663:HOH:O	2.54	0.48
1:B:565:GLN:OE1	1:B:577:PHE:HA	2.13	0.48
1:B:531:LEU:HD11	6:B:1:NS4:C7	2.44	0.48
1:A:408:LEU:O	1:A:409:TYR:HB2	2.14	0.47
1:A:531:LEU:HD11	6:A:619:NS4:C7	2.45	0.47
1:A:137[B]:LYS:CD	1:A:137[B]:LYS:N	2.29	0.47
1:A:554:VAL:HG13	1:A:555:GLY:N	2.30	0.47
5:A:6:GOL:H32	7:A:620:HEM:NA	2.30	0.46
1:B:554:VAL:HG13	1:B:555:GLY:N	2.29	0.46
1:A:117:LEU:HD23	1:A:531:LEU:HD13	1.98	0.46
1:B:207:HIS:O	1:B:289:GLN:NE2	2.49	0.46
11:A:637:HOH:O	3:D:1:NAG:H82	2.15	0.45
1:B:388:HIS:N	1:B:389:PRO:CD	2.80	0.45
1:A:382:ASN:O	1:A:386:HIS:CD2	2.68	0.45
1:A:543[A]:GLN:HG3	1:B:125:ASP:OD1	2.16	0.45
1:B:206:THR:HG21	1:B:385:TYR:CE2	2.51	0.45
1:B:216:ARG:HG2	4:F:2:NAG:H81	1.98	0.45
1:B:513:ARG:HH21	1:B:520:GLU:HG3	1.81	0.45
1:A:268:ASP:CB	11:A:656:HOH:O	2.64	0.45
1:B:280:PRO:HG2	1:B:283:LEU:HD12	1.99	0.45
1:B:117:LEU:HD23	1:B:531:LEU:HD13	1.99	0.44
1:B:358:LYS:HE2	1:B:358:LYS:HB3	1.76	0.44
1:B:289:GLN:HG2	1:B:292:PHE:CZ	2.52	0.44
1:A:292:PHE:CD1	1:A:298:LEU:HD13	2.53	0.44
2:C:2:NDG:H2	2:C:2:NDG:H8C1	1.84	0.43
1:B:270:GLN:HA	1:B:270:GLN:HE21	1.84	0.43
1:B:527:ALA:HB3	1:B:528:PRO:HD3	2.01	0.43
1:A:280:PRO:HG2	1:A:283:LEU:HD12	2.00	0.43

Continued on next page...

Continued from previous page...

Atom-1	Atom-2	Interatomic distance (Å)	Clash overlap (Å)
1:A:279:ILE:HA	1:A:280:PRO:HD2	1.84	0.43
1:A:363:PRO:HG2	1:A:545:TRP:CD2	2.54	0.42
1:A:538:PRO:HG3	1:B:142:PHE:CE2	2.54	0.42
1:B:156:ALA:N	5:B:3:GOL:H32	2.15	0.42
5:B:4:GOL:H31	7:B:619:HEM:C1A	2.54	0.42
1:A:77:ARG:CZ	11:A:673:HOH:O	2.67	0.42
1:B:77:ARG:NH2	11:B:658:HOH:O	2.53	0.42
1:A:34:HIS:HA	1:A:35:PRO:HD3	1.96	0.42
1:B:344:VAL:HA	1:B:348:TYR:HB3	2.01	0.42
1:A:96:PHE:O	1:A:97:LYS:C	2.57	0.42
1:B:216:ARG:HH11	4:F:2:NAG:H83	1.83	0.42
1:A:83:LYS:HA	1:A:84:PRO:HD3	1.96	0.41
1:A:209:PHE:HB2	1:A:377:ILE:HG13	2.02	0.41
1:A:230:LEU:CD2	1:A:336:LEU:HB3	2.50	0.41
1:A:388:HIS:N	1:A:389:PRO:CD	2.84	0.41
1:B:132:VAL:HG13	1:B:133:HIS:CD2	2.55	0.41
1:B:388:HIS:N	1:B:389:PRO:HD2	2.35	0.41
1:B:333:ARG:NH1	11:B:637:HOH:O	2.50	0.41
1:A:207:HIS:O	1:A:289:GLN:NE2	2.54	0.41
1:B:276:PRO:HA	1:B:277:PRO:HD3	1.91	0.41
1:A:538:PRO:HG3	1:B:142:PHE:CZ	2.56	0.40
1:B:344:VAL:O	1:B:349:VAL:HG23	2.21	0.40
1:B:442:ILE:H	1:B:442:ILE:HD12	1.85	0.40
1:A:526:GLY:HA3	6:A:619:NS4:H12	2.03	0.40
1:B:292:PHE:CD1	1:B:298:LEU:HD13	2.56	0.40
1:B:408:LEU:O	1:B:409:TYR:HB2	2.21	0.40
1:B:188:ILE:HA	1:B:189:PRO:HD2	1.87	0.40
1:A:176:GLU:HG2	1:A:180:LYS:HD2	2.03	0.40
1:A:180:LYS:HE3	1:A:490:GLU:OE1	2.22	0.40
1:A:206:THR:HG21	1:A:385:TYR:CE2	2.56	0.40

There are no symmetry-related clashes.

5.3 Torsion angles [i](#)

5.3.1 Protein backbone [i](#)

In the following table, the Percentiles column shows the percent Ramachandran outliers of the chain as a percentile score with respect to all X-ray entries followed by that with respect to entries of similar resolution.

The Analysed column shows the number of residues for which the backbone conformation was analysed, and the total number of residues.

Mol	Chain	Analysed	Favoured	Allowed	Outliers	Percentiles	
1	A	552/610 (90%)	530 (96%)	22 (4%)	0	100	100
1	B	549/610 (90%)	529 (96%)	20 (4%)	0	100	100
All	All	1101/1220 (90%)	1059 (96%)	42 (4%)	0	100	100

There are no Ramachandran outliers to report.

5.3.2 Protein sidechains [i](#)

In the following table, the Percentiles column shows the percent sidechain outliers of the chain as a percentile score with respect to all X-ray entries followed by that with respect to entries of similar resolution.

The Analysed column shows the number of residues for which the sidechain conformation was analysed, and the total number of residues.

Mol	Chain	Analysed	Rotameric	Outliers	Percentiles	
1	A	461/542 (85%)	447 (97%)	14 (3%)	41	75
1	B	460/542 (85%)	448 (97%)	12 (3%)	46	78
All	All	921/1084 (85%)	895 (97%)	26 (3%)	44	77

All (26) residues with a non-rotameric sidechain are listed below:

Mol	Chain	Res	Type
1	A	70	THR
1	A	85	THR
1	A	122	TYR
1	A	178	LEU
1	A	207	HIS
1	A	281	GLU
1	A	289	GLN
1	A	385	TYR
1	A	455	SER
1	A	461	GLN
1	A	484	GLU
1	A	543[A]	GLN
1	A	543[B]	GLN
1	A	581	ASN
1	B	33	HIS

Continued on next page...

Continued from previous page...

Mol	Chain	Res	Type
1	B	85	THR
1	B	122	TYR
1	B	157	ASP
1	B	289	GLN
1	B	385	TYR
1	B	422	PHE
1	B	455	SER
1	B	461	GLN
1	B	484	GLU
1	B	565	GLN
1	B	581	ASN

Sometimes sidechains can be flipped to improve hydrogen bonding and reduce clashes. All (5) such sidechains are listed below:

Mol	Chain	Res	Type
1	A	168	ASN
1	A	270	GLN
1	B	168	ASN
1	B	207	HIS
1	B	270	GLN

5.3.3 RNA [i](#)

There are no RNA molecules in this entry.

5.4 Non-standard residues in protein, DNA, RNA chains [i](#)

There are no non-standard protein/DNA/RNA residues in this entry.

5.5 Carbohydrates [i](#)

9 monosaccharides are modelled in this entry.

In the following table, the Counts columns list the number of bonds (or angles) for which Mogul statistics could be retrieved, the number of bonds (or angles) that are observed in the model and the number of bonds (or angles) that are defined in the Chemical Component Dictionary. The Link column lists molecule types, if any, to which the group is linked. The Z score for a bond length (or angle) is the number of standard deviations the observed value is removed from the expected value. A bond length (or angle) with $|Z| > 2$ is considered an outlier worth inspection. RMSZ is the root-mean-square of all Z scores of the bond lengths (or angles).

Mol	Type	Chain	Res	Link	Bond lengths			Bond angles		
					Counts	RMSZ	# Z > 2	Counts	RMSZ	# Z > 2
2	NAG	C	1	1,2	14,14,15	0.62	0	17,19,21	1.51	3 (17%)
2	NDG	C	2	2	14,14,15	0.73	1 (7%)	17,19,21	2.37	8 (47%)
3	NAG	D	1	3,1	14,14,15	0.72	0	17,19,21	1.42	3 (17%)
3	NAG	D	2	3	14,14,15	0.56	0	17,19,21	1.33	4 (23%)
2	NAG	E	1	1,2	14,14,15	0.62	0	17,19,21	0.70	0
2	NDG	E	2	2	14,14,15	0.53	0	17,19,21	0.97	1 (5%)
4	NAG	F	1	1,4	14,14,15	1.98	1 (7%)	17,19,21	2.68	6 (35%)
4	NAG	F	2	4	14,14,15	0.68	0	17,19,21	2.75	5 (29%)
4	BMA	F	3	4	11,11,12	0.85	0	15,15,17	2.01	4 (26%)

In the following table, the Chirals column lists the number of chiral outliers, the number of chiral centers analysed, the number of these observed in the model and the number defined in the Chemical Component Dictionary. Similar counts are reported in the Torsion and Rings columns. '2' means no outliers of that kind were identified.

Mol	Type	Chain	Res	Link	Chirals	Torsions	Rings
2	NAG	C	1	1,2	-	0/6/23/26	0/1/1/1
2	NDG	C	2	2	-	4/6/23/26	0/1/1/1
3	NAG	D	1	3,1	-	0/6/23/26	0/1/1/1
3	NAG	D	2	3	-	4/6/23/26	0/1/1/1
2	NAG	E	1	1,2	-	2/6/23/26	0/1/1/1
2	NDG	E	2	2	-	0/6/23/26	0/1/1/1
4	NAG	F	1	1,4	-	0/6/23/26	0/1/1/1
4	NAG	F	2	4	-	4/6/23/26	0/1/1/1
4	BMA	F	3	4	-	2/2/19/22	1/1/1/1

All (2) bond length outliers are listed below:

Mol	Chain	Res	Type	Atoms	Z	Observed(Å)	Ideal(Å)
4	F	1	NAG	O5-C1	-6.79	1.32	1.43
2	C	2	NDG	C1-C2	2.26	1.55	1.52

All (34) bond angle outliers are listed below:

Mol	Chain	Res	Type	Atoms	Z	Observed(°)	Ideal(°)
4	F	1	NAG	C1-O5-C5	-7.70	101.76	112.19
4	F	2	NAG	O5-C5-C6	5.98	116.58	107.20
2	C	2	NDG	C3-C4-C5	-5.16	101.03	110.24
4	F	1	NAG	O5-C5-C6	5.07	115.15	107.20

Continued on next page...

Continued from previous page...

Mol	Chain	Res	Type	Atoms	Z	Observed(°)	Ideal(°)
4	F	3	BMA	C1-O5-C5	4.84	118.74	112.19
4	F	2	NAG	O4-C4-C5	4.76	121.12	109.30
4	F	2	NAG	C4-C3-C2	-4.48	104.45	111.02
4	F	2	NAG	C3-C4-C5	-4.41	102.37	110.24
4	F	2	NAG	O4-C4-C3	4.12	119.87	110.35
4	F	1	NAG	O5-C1-C2	-3.83	105.23	111.29
2	C	2	NDG	O5-C1-C2	3.60	116.98	111.29
4	F	3	BMA	C1-C2-C3	3.47	113.93	109.67
2	C	1	NAG	O5-C5-C6	3.36	112.47	107.20
2	C	2	NDG	C1-O5-C5	3.36	116.74	112.19
4	F	3	BMA	O2-C2-C1	3.28	115.86	109.15
2	C	2	NDG	O5-C5-C6	3.26	112.32	107.20
2	C	1	NAG	C3-C4-C5	-3.14	104.63	110.24
3	D	1	NAG	C2-N2-C7	3.14	127.37	122.90
2	C	2	NDG	O4-C4-C5	2.74	116.11	109.30
3	D	2	NAG	C1-O5-C5	2.72	115.88	112.19
4	F	1	NAG	O4-C4-C5	2.71	116.01	109.30
4	F	3	BMA	O5-C5-C6	2.69	111.43	107.20
3	D	1	NAG	C1-C2-N2	-2.68	105.91	110.49
2	C	2	NDG	C8-C7-N2	2.49	120.32	116.10
2	C	1	NAG	O4-C4-C3	2.48	116.08	110.35
3	D	1	NAG	O7-C7-N2	2.33	126.23	121.95
2	E	2	NDG	O5-C5-C6	2.28	110.78	107.20
3	D	2	NAG	C2-N2-C7	-2.26	119.69	122.90
2	C	2	NDG	C6-C5-C4	2.17	118.09	113.00
2	C	2	NDG	O5-C5-C4	-2.16	105.58	110.83
4	F	1	NAG	C2-N2-C7	-2.15	119.84	122.90
3	D	2	NAG	O5-C1-C2	-2.12	107.95	111.29
4	F	1	NAG	C3-C4-C5	-2.07	106.55	110.24
3	D	2	NAG	O4-C4-C5	2.03	114.34	109.30

There are no chirality outliers.

All (16) torsion outliers are listed below:

Mol	Chain	Res	Type	Atoms
2	E	1	NAG	O5-C5-C6-O6
4	F	3	BMA	O5-C5-C6-O6
2	E	1	NAG	C4-C5-C6-O6
2	C	2	NDG	C8-C7-N2-C2
2	C	2	NDG	O7-C7-N2-C2
3	D	2	NAG	C8-C7-N2-C2
3	D	2	NAG	O7-C7-N2-C2

Continued on next page...

Continued from previous page...

Mol	Chain	Res	Type	Atoms
4	F	2	NAG	C8-C7-N2-C2
4	F	2	NAG	O7-C7-N2-C2
4	F	2	NAG	C4-C5-C6-O6
4	F	2	NAG	O5-C5-C6-O6
2	C	2	NDG	C4-C5-C6-O6
4	F	3	BMA	C4-C5-C6-O6
2	C	2	NDG	O5-C5-C6-O6
3	D	2	NAG	C4-C5-C6-O6
3	D	2	NAG	O5-C5-C6-O6

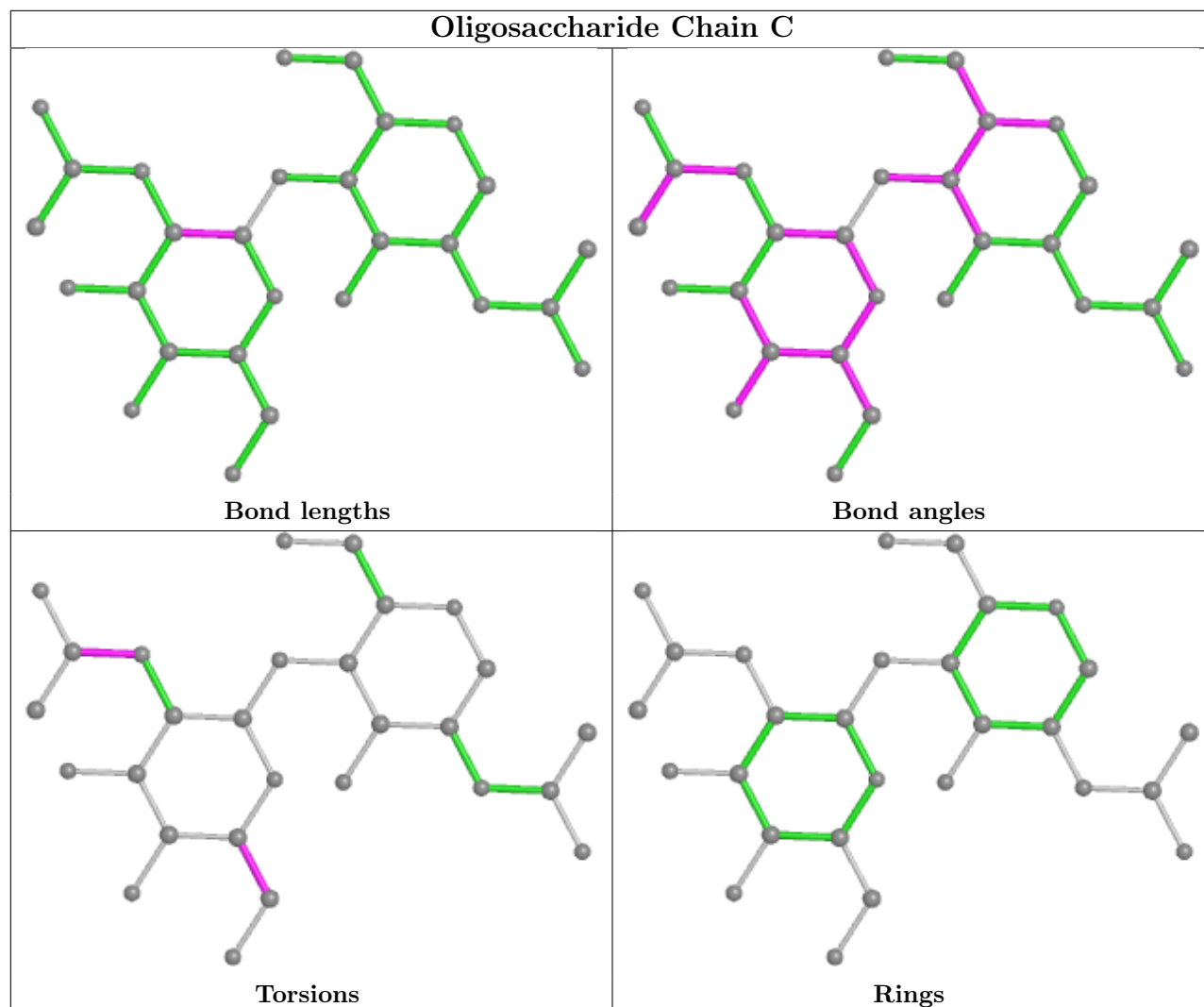
All (1) ring outliers are listed below:

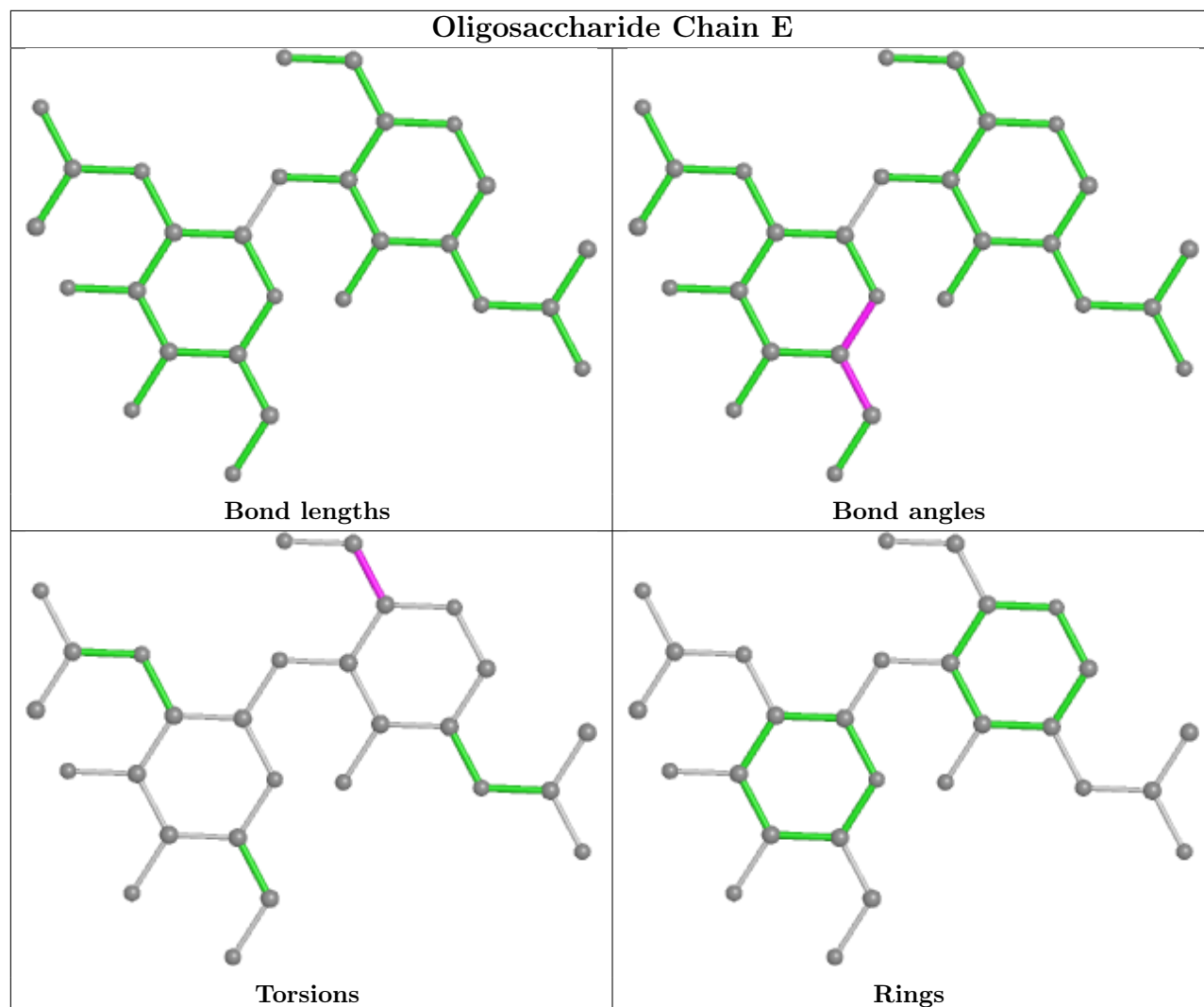
Mol	Chain	Res	Type	Atoms
4	F	3	BMA	C1-C2-C3-C4-C5-O5

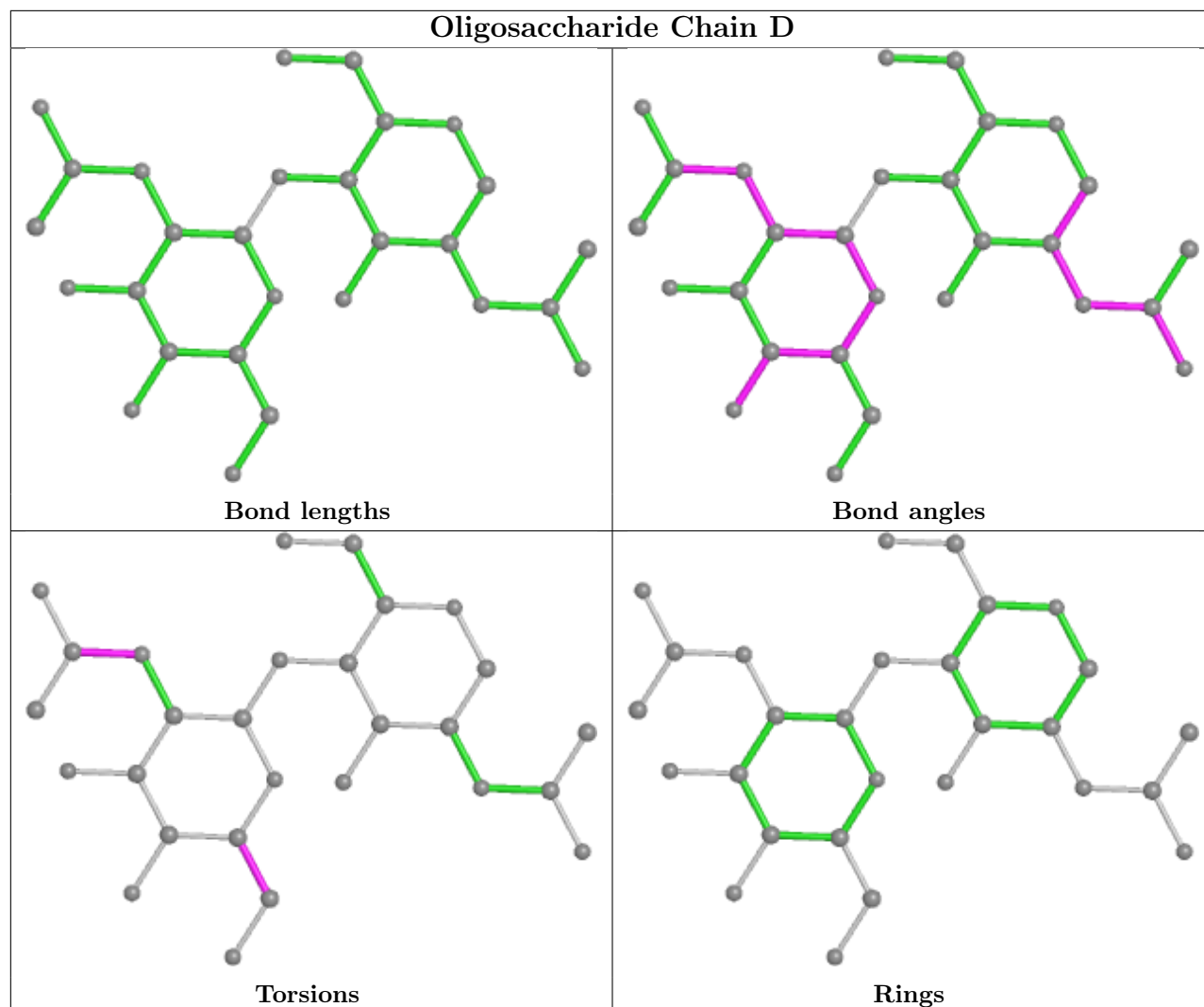
4 monomers are involved in 6 short contacts:

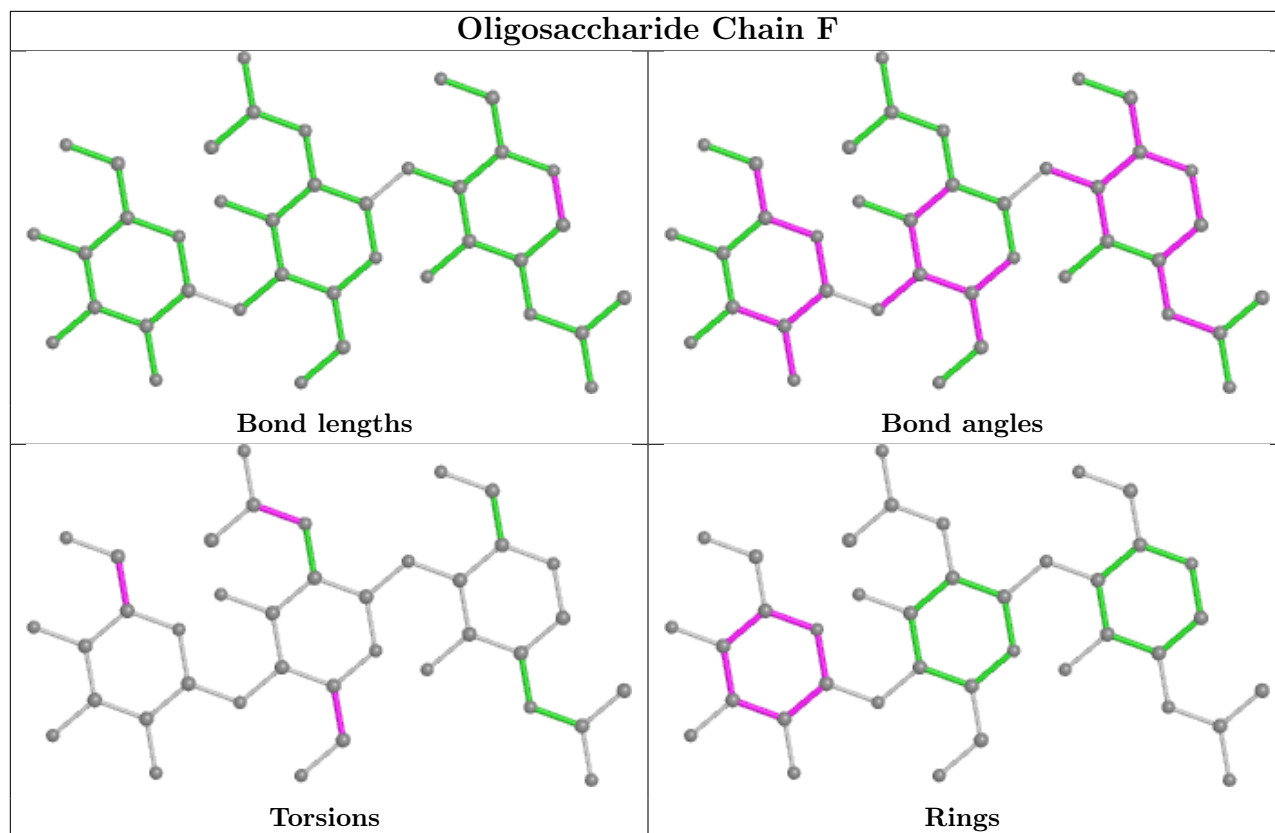
Mol	Chain	Res	Type	Clashes	Symm-Clashes
2	C	2	NDG	1	0
3	D	1	NAG	1	0
4	F	2	NAG	3	0
4	F	3	BMA	1	0

The following is a two-dimensional graphical depiction of Mogul quality analysis of bond lengths, bond angles, torsion angles, and ring geometry for oligosaccharide.









5.6 Ligand geometry [i](#)

14 ligands are modelled in this entry.

In the following table, the Counts columns list the number of bonds (or angles) for which Mogul statistics could be retrieved, the number of bonds (or angles) that are observed in the model and the number of bonds (or angles) that are defined in the Chemical Component Dictionary. The Link column lists molecule types, if any, to which the group is linked. The Z score for a bond length (or angle) is the number of standard deviations the observed value is removed from the expected value. A bond length (or angle) with $|Z| > 2$ is considered an outlier worth inspection. RMSZ is the root-mean-square of all Z scores of the bond lengths (or angles).

Mol	Type	Chain	Res	Link	Bond lengths			Bond angles		
					Counts	RMSZ	$\# Z > 2$	Counts	RMSZ	$\# Z > 2$
5	GOL	A	7	-	5,5,5	0.32	0	5,5,5	0.46	0
5	GOL	B	4	-	5,5,5	0.56	0	5,5,5	0.27	0
5	GOL	B	2	-	5,5,5	0.53	0	5,5,5	0.39	0
8	NAG	B	681	1	14,14,15	0.77	0	17,19,21	1.94	4 (23%)
9	BOG	A	703	-	20,20,20	1.18	2 (10%)	25,25,25	1.04	1 (4%)
10	MAN	B	673	-	11,11,12	0.86	1 (9%)	15,15,17	2.21	3 (20%)
6	NS4	B	1	-	21,22,22	3.51	5 (23%)	29,31,31	1.88	4 (13%)
5	GOL	A	1	-	5,5,5	0.61	0	5,5,5	0.38	0
7	HEM	A	620	1	41,50,50	1.96	7 (17%)	45,82,82	1.57	7 (15%)

Mol	Type	Chain	Res	Link	Bond lengths			Bond angles		
					Counts	RMSZ	# Z > 2	Counts	RMSZ	# Z > 2
5	GOL	A	6	-	5,5,5	0.43	0	5,5,5	0.42	0
5	GOL	B	3	-	5,5,5	0.30	0	5,5,5	0.32	0
8	NAG	A	681	1	14,14,15	1.51	2 (14%)	17,19,21	1.33	2 (11%)
7	HEM	B	619	1	41,50,50	1.91	6 (14%)	45,82,82	1.56	5 (11%)
6	NS4	A	619	-	21,22,22	3.55	5 (23%)	29,31,31	2.27	6 (20%)

In the following table, the Chirals column lists the number of chiral outliers, the number of chiral centers analysed, the number of these observed in the model and the number defined in the Chemical Component Dictionary. Similar counts are reported in the Torsion and Rings columns. '-' means no outliers of that kind were identified.

Mol	Type	Chain	Res	Link	Chirals	Torsions	Rings
5	GOL	A	7	-	-	4/4/4/4	-
5	GOL	B	4	-	-	4/4/4/4	-
5	GOL	B	2	-	-	2/4/4/4	-
8	NAG	B	681	1	-	1/6/23/26	0/1/1/1
9	BOG	A	703	-	-	6/11/31/31	0/1/1/1
10	MAN	B	673	-	-	2/2/19/22	0/1/1/1
6	NS4	B	1	-	-	5/11/21/21	0/2/2/2
5	GOL	A	1	-	-	2/4/4/4	-
7	HEM	A	620	1	-	8/12/54/54	-
5	GOL	A	6	-	-	4/4/4/4	-
5	GOL	B	3	-	-	0/4/4/4	-
8	NAG	A	681	1	-	2/6/23/26	0/1/1/1
7	HEM	B	619	1	-	4/12/54/54	-
6	NS4	A	619	-	-	5/11/21/21	0/2/2/2

All (28) bond length outliers are listed below:

Mol	Chain	Res	Type	Atoms	Z	Observed(Å)	Ideal(Å)
6	A	619	NS4	O3-N2	12.79	1.44	1.22
6	B	1	NS4	O3-N2	12.15	1.43	1.22
7	B	619	HEM	C3D-C2D	7.73	1.53	1.36
7	A	620	HEM	C3D-C2D	7.58	1.52	1.36
6	B	1	NS4	C1-N1	-6.16	1.32	1.42
6	A	619	NS4	C1-N1	-5.60	1.33	1.42
6	A	619	NS4	C4-N2	-5.35	1.32	1.45
6	B	1	NS4	C4-N2	-5.32	1.32	1.45
7	A	620	HEM	C3C-C2C	-4.84	1.33	1.40

Continued on next page...

Continued from previous page...

Mol	Chain	Res	Type	Atoms	Z	Observed(Å)	Ideal(Å)
7	B	619	HEM	C3C-C2C	-4.69	1.33	1.40
8	A	681	NAG	O5-C1	-4.67	1.36	1.43
6	B	1	NS4	O2-S1	4.38	1.51	1.43
6	B	1	NS4	O1-S1	4.27	1.51	1.43
6	A	619	NS4	O2-S1	4.20	1.50	1.43
7	A	620	HEM	C3C-CAC	3.82	1.55	1.47
9	A	703	BOG	O1-C1	3.81	1.46	1.40
6	A	619	NS4	O1-S1	3.68	1.49	1.43
7	B	619	HEM	C3C-CAC	3.55	1.55	1.47
7	A	620	HEM	CAA-C2A	2.88	1.56	1.52
8	A	681	NAG	C1-C2	2.70	1.56	1.52
7	A	620	HEM	CAB-C3B	2.61	1.54	1.47
9	A	703	BOG	O5-C1	2.39	1.47	1.41
7	B	619	HEM	CAB-C3B	2.34	1.53	1.47
7	A	620	HEM	FE-NB	2.29	2.08	1.96
7	B	619	HEM	CMB-C2B	2.17	1.55	1.50
7	A	620	HEM	CMB-C2B	2.13	1.55	1.50
7	B	619	HEM	CAA-C2A	2.09	1.55	1.52
10	B	673	MAN	C2-C3	2.01	1.55	1.52

All (32) bond angle outliers are listed below:

Mol	Chain	Res	Type	Atoms	Z	Observed(°)	Ideal(°)
6	A	619	NS4	O2-S1-O1	-8.05	107.28	118.85
6	B	1	NS4	O2-S1-O1	-6.58	109.39	118.85
10	B	673	MAN	C1-C2-C3	6.28	117.39	109.67
7	A	620	HEM	C4D-ND-C1D	5.68	110.94	105.07
7	B	619	HEM	C4D-ND-C1D	5.53	110.78	105.07
8	B	681	NAG	C4-C3-C2	5.48	119.05	111.02
6	A	619	NS4	O5-C2-C1	5.06	119.94	114.63
6	B	1	NS4	O5-C2-C1	4.86	119.73	114.63
6	A	619	NS4	O5-C8-C9	-4.61	98.11	108.31
6	B	1	NS4	O5-C8-C13	3.80	116.71	108.31
8	A	681	NAG	O5-C1-C2	-3.69	105.47	111.29
7	A	620	HEM	C4B-CHC-C1C	3.36	126.99	122.56
10	B	673	MAN	C2-C3-C4	3.30	116.61	110.89
7	B	619	HEM	C4C-CHD-C1D	3.27	126.88	122.56
8	B	681	NAG	C2-N2-C7	3.22	127.49	122.90
8	A	681	NAG	O5-C5-C6	3.13	112.12	107.20
6	A	619	NS4	C7-S1-N1	3.08	110.15	106.63
10	B	673	MAN	O5-C5-C6	2.97	111.86	107.20
7	A	620	HEM	CBA-CAA-C2A	2.63	117.11	112.62

Continued on next page...

Continued from previous page...

Mol	Chain	Res	Type	Atoms	Z	Observed(°)	Ideal(°)
8	B	681	NAG	C1-O5-C5	2.63	115.75	112.19
7	A	620	HEM	CMA-C3A-C4A	-2.62	124.44	128.46
7	B	619	HEM	C4B-CHC-C1C	2.61	126.01	122.56
7	A	620	HEM	CAD-C3D-C4D	2.61	129.22	124.66
8	B	681	NAG	C3-C4-C5	2.50	114.69	110.24
9	A	703	BOG	C1'-O1-C1	-2.43	109.81	113.84
7	B	619	HEM	CMA-C3A-C4A	-2.32	124.89	128.46
7	A	620	HEM	C4A-C3A-C2A	2.31	108.60	107.00
7	A	620	HEM	C4C-CHD-C1D	2.25	125.53	122.56
6	A	619	NS4	O5-C8-C13	2.23	113.24	108.31
6	A	619	NS4	C13-C8-C9	2.18	115.94	111.74
6	B	1	NS4	O3-N2-C4	2.11	121.79	118.80
7	B	619	HEM	CBD-CAD-C3D	-2.03	107.00	112.63

There are no chirality outliers.

All (49) torsion outliers are listed below:

Mol	Chain	Res	Type	Atoms
5	A	1	GOL	O1-C1-C2-C3
5	A	6	GOL	C1-C2-C3-O3
5	A	6	GOL	O2-C2-C3-O3
5	A	7	GOL	O1-C1-C2-C3
5	A	7	GOL	C1-C2-C3-O3
5	B	2	GOL	O1-C1-C2-C3
5	B	4	GOL	O1-C1-C2-C3
6	A	619	NS4	C1-N1-S1-C7
6	A	619	NS4	C1-C2-O5-C8
6	B	1	NS4	C1-C2-O5-C8
6	B	1	NS4	C13-C8-O5-C2
7	A	620	HEM	C1A-C2A-CAA-CBA
7	A	620	HEM	C3A-C2A-CAA-CBA
7	A	620	HEM	C2B-C3B-CAB-CBB
7	A	620	HEM	C4B-C3B-CAB-CBB
7	B	619	HEM	C2B-C3B-CAB-CBB
7	B	619	HEM	C4B-C3B-CAB-CBB
10	B	673	MAN	O5-C5-C6-O6
10	B	673	MAN	C4-C5-C6-O6
7	A	620	HEM	C2A-CAA-CBA-CGA
8	A	681	NAG	C4-C5-C6-O6
7	A	620	HEM	C4D-C3D-CAD-CBD
7	A	620	HEM	C2D-C3D-CAD-CBD
9	A	703	BOG	C2-C1-O1-C1'

Continued on next page...

Continued from previous page...

Mol	Chain	Res	Type	Atoms
5	A	6	GOL	O1-C1-C2-C3
5	B	4	GOL	C1-C2-C3-O3
9	A	703	BOG	O5-C1-O1-C1'
5	A	1	GOL	O1-C1-C2-O2
5	A	7	GOL	O1-C1-C2-O2
5	B	2	GOL	O1-C1-C2-O2
6	B	1	NS4	C1-N1-S1-C7
6	A	619	NS4	C3-C2-O5-C8
7	A	620	HEM	C3D-CAD-CBD-CGD
8	A	681	NAG	O5-C5-C6-O6
8	B	681	NAG	O5-C5-C6-O6
5	A	7	GOL	O2-C2-C3-O3
5	B	4	GOL	O1-C1-C2-O2
6	A	619	NS4	C13-C8-O5-C2
9	A	703	BOG	C5'-C6'-C7'-C8'
5	B	4	GOL	O2-C2-C3-O3
9	A	703	BOG	C4-C5-C6-O6
9	A	703	BOG	C1'-C2'-C3'-C4'
5	A	6	GOL	O1-C1-C2-O2
6	A	619	NS4	C1-N1-S1-O1
6	B	1	NS4	C9-C8-O5-C2
9	A	703	BOG	O5-C5-C6-O6
6	B	1	NS4	C3-C2-O5-C8
7	B	619	HEM	CAA-CBA-CGA-O2A
7	B	619	HEM	CAA-CBA-CGA-O1A

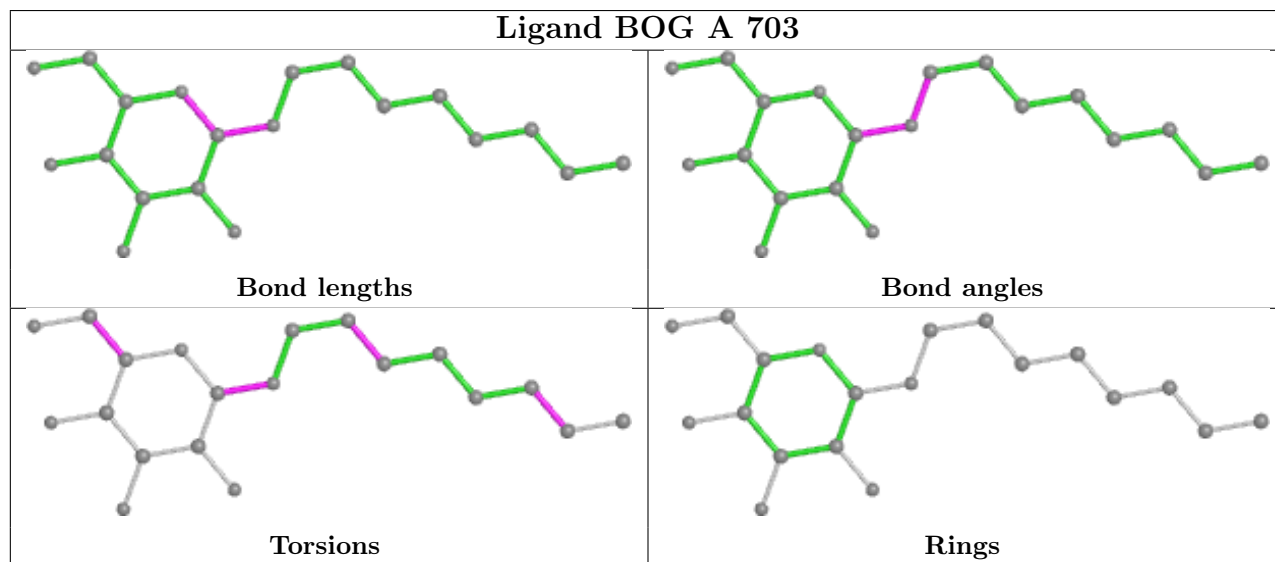
There are no ring outliers.

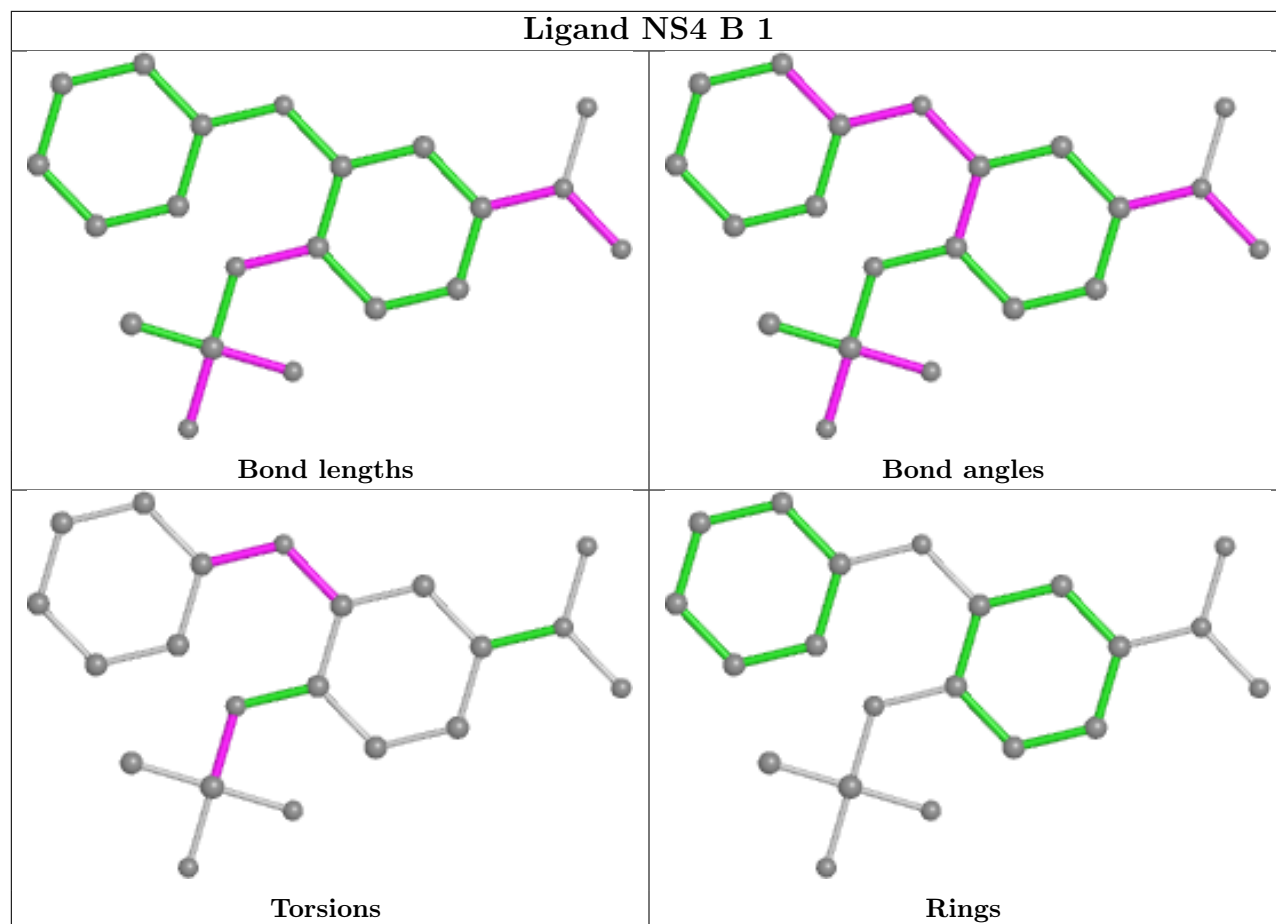
10 monomers are involved in 18 short contacts:

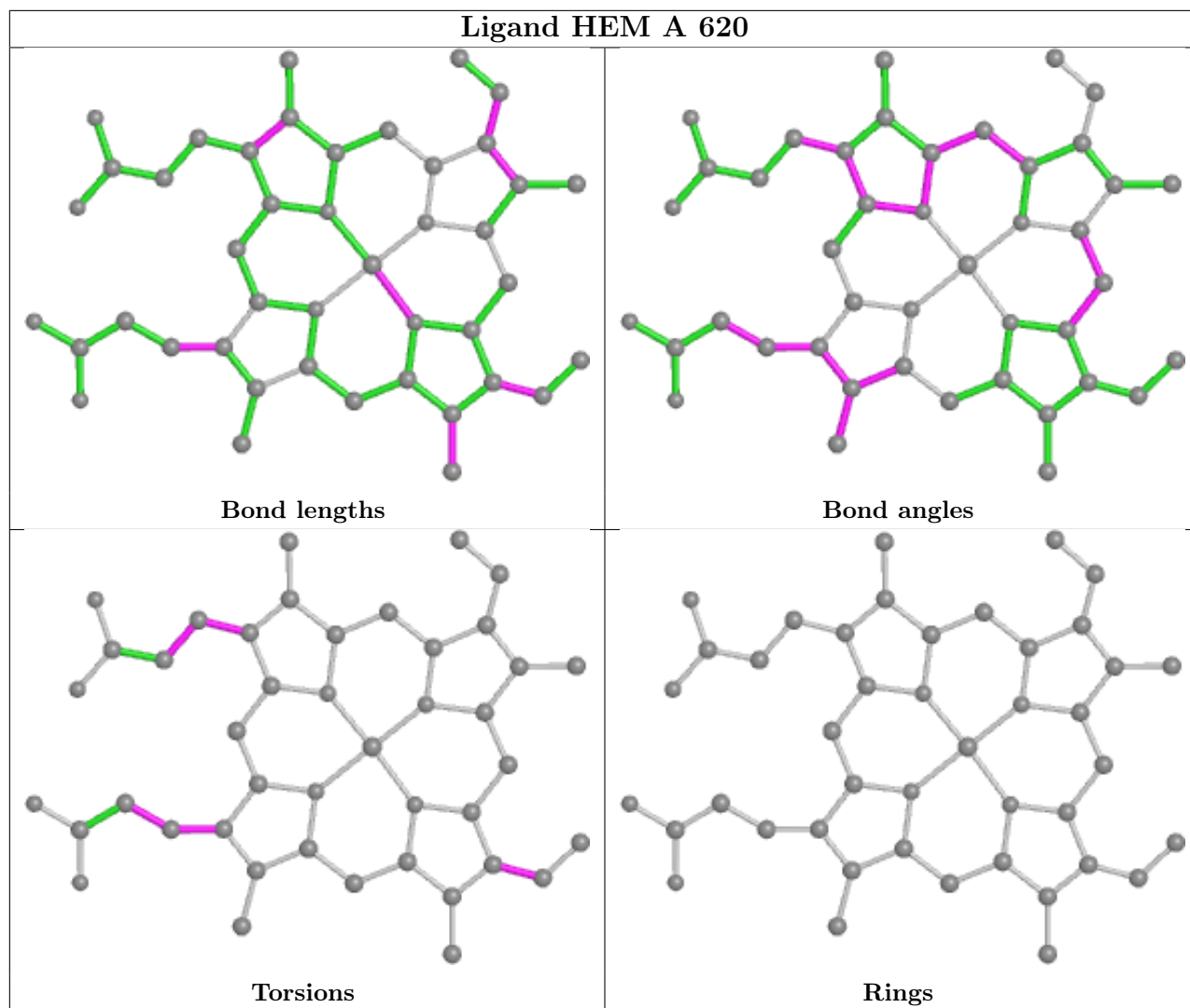
Mol	Chain	Res	Type	Clashes	Symm-Clashes
5	A	7	GOL	1	0
5	B	4	GOL	1	0
9	A	703	BOG	1	0
6	B	1	NS4	4	0
5	A	1	GOL	1	0
7	A	620	HEM	2	0
5	A	6	GOL	1	0
5	B	3	GOL	2	0
7	B	619	HEM	3	0
6	A	619	NS4	4	0

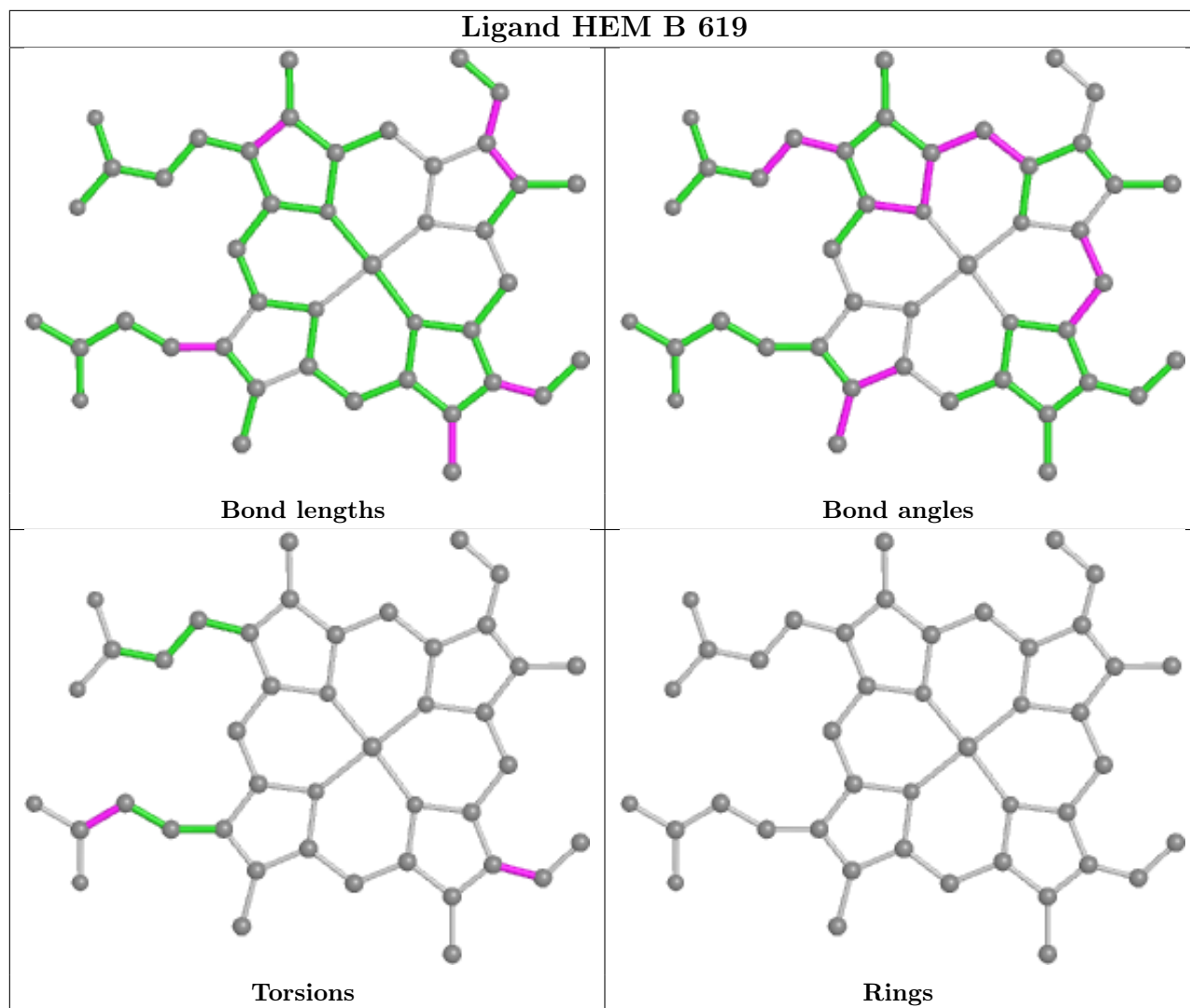
The following is a two-dimensional graphical depiction of Mogul quality analysis of bond lengths,

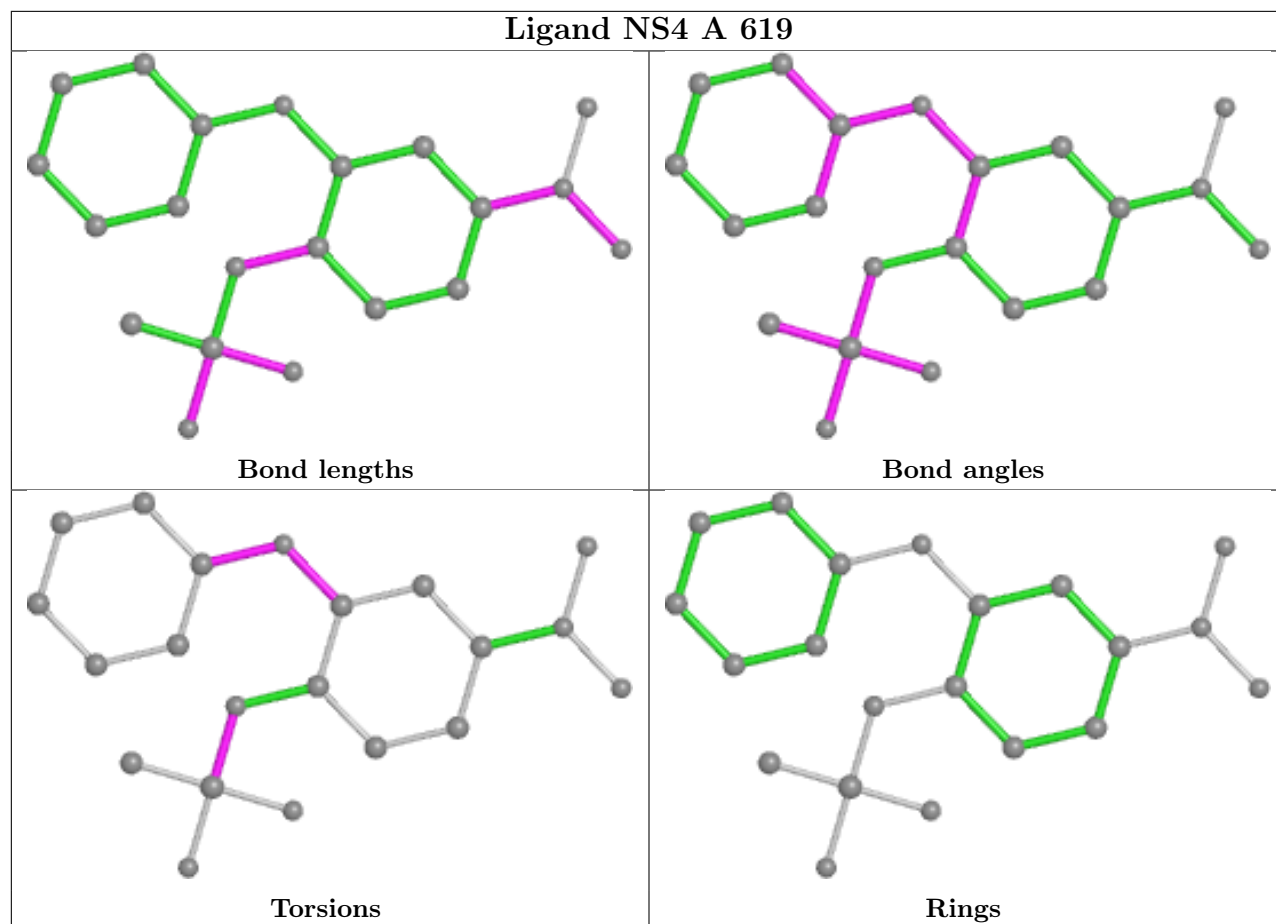
bond angles, torsion angles, and ring geometry for all instances of the Ligand of Interest. In addition, ligands with molecular weight > 250 and outliers as shown on the validation Tables will also be included. For torsion angles, if less than 5% of the Mogul distribution of torsion angles is within 10 degrees of the torsion angle in question, then that torsion angle is considered an outlier. Any bond that is central to one or more torsion angles identified as an outlier by Mogul will be highlighted in the graph. For rings, the root-mean-square deviation (RMSD) between the ring in question and similar rings identified by Mogul is calculated over all ring torsion angles. If the average RMSD is greater than 60 degrees and the minimal RMSD between the ring in question and any Mogul-identified rings is also greater than 60 degrees, then that ring is considered an outlier. The outliers are highlighted in purple. The color gray indicates Mogul did not find sufficient equivalents in the CSD to analyse the geometry.











5.7 Other polymers [i](#)

There are no such residues in this entry.

5.8 Polymer linkage issues [i](#)

There are no chain breaks in this entry.

6 Fit of model and data [i](#)

6.1 Protein, DNA and RNA chains [i](#)

In the following table, the column labelled ‘#RSRZ > 2’ contains the number (and percentage) of RSRZ outliers, followed by percent RSRZ outliers for the chain as percentile scores relative to all X-ray entries and entries of similar resolution. The OWAB column contains the minimum, median, 95th percentile and maximum values of the occupancy-weighted average B-factor per residue. The column labelled ‘Q < 0.9’ lists the number of (and percentage) of residues with an average occupancy less than 0.9.

Mol	Chain	Analysed	<RSRZ>	#RSRZ>2	OWAB(Å ²)	Q<0.9
1	A	551/610 (90%)	-0.57	4 (0%) 87 69	17, 33, 51, 60	0
1	B	551/610 (90%)	-0.51	3 (0%) 91 75	17, 33, 51, 60	0
All	All	1102/1220 (90%)	-0.54	7 (0%) 89 72	17, 33, 51, 60	0

All (7) RSRZ outliers are listed below:

Mol	Chain	Res	Type	RSRZ
1	A	278	HIS	2.6
1	B	157	ASP	2.5
1	A	577	PHE	2.5
1	A	399	ASP	2.3
1	B	277	PRO	2.3
1	A	368	ASN	2.0
1	B	82	LEU	2.0

6.2 Non-standard residues in protein, DNA, RNA chains [i](#)

There are no non-standard protein/DNA/RNA residues in this entry.

6.3 Carbohydrates [i](#)

In the following table, the Atoms column lists the number of modelled atoms in the group and the number defined in the chemical component dictionary. The B-factors column lists the minimum, median, 95th percentile and maximum values of B factors of atoms in the group. The column labelled ‘Q < 0.9’ lists the number of atoms with occupancy less than 0.9.

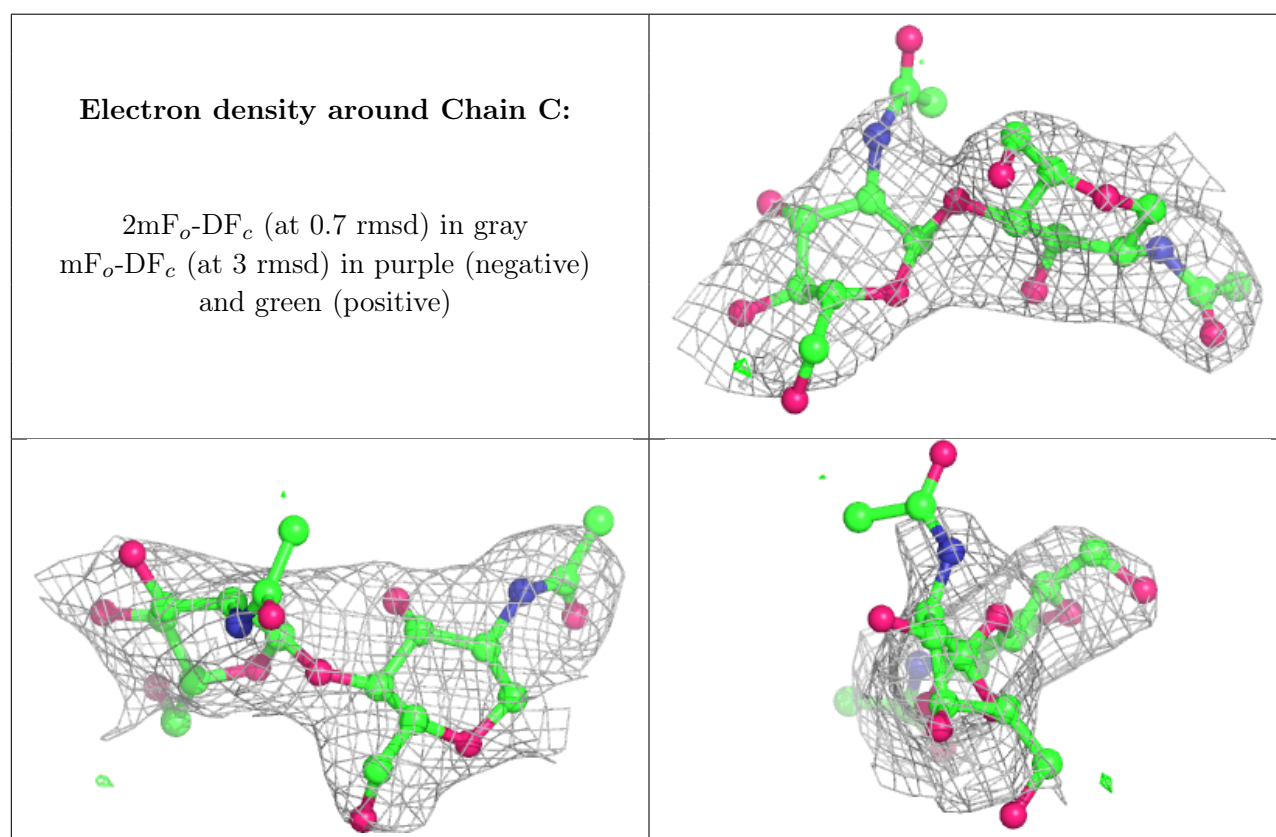
Mol	Type	Chain	Res	Atoms	RSCC	RSR	B-factors(Å ²)	Q<0.9
4	BMA	F	3	11/12	0.78	0.47	55,57,58,58	0
2	NDG	C	2	14/15	0.79	0.55	74,77,78,79	0

Continued on next page...

Continued from previous page...

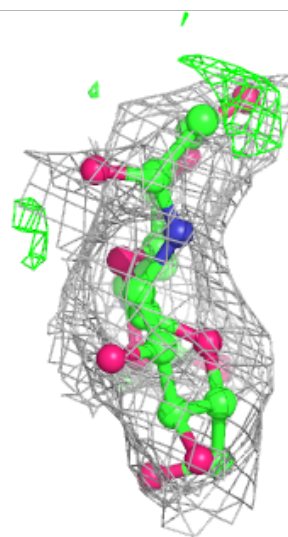
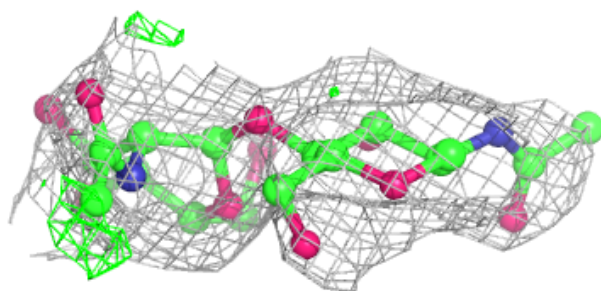
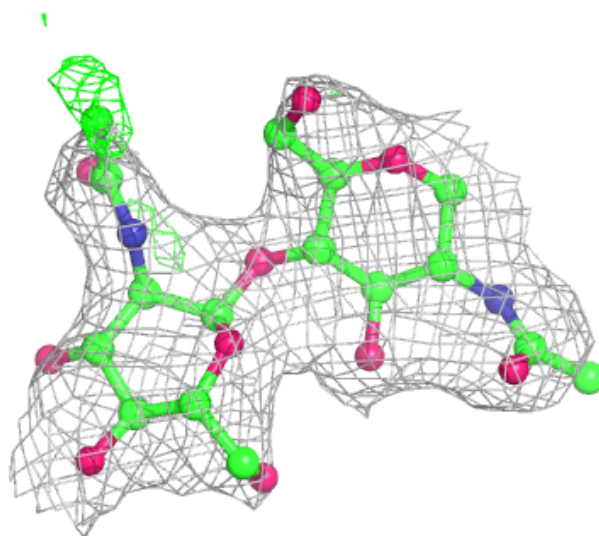
Mol	Type	Chain	Res	Atoms	RSCC	RSR	B-factors(\AA^2)	Q<0.9
2	NDG	E	2	14/15	0.82	0.42	72,73,74,74	0
2	NAG	E	1	14/15	0.88	0.33	60,63,65,69	0
3	NAG	D	2	14/15	0.89	0.33	47,50,54,58	0
3	NAG	D	1	14/15	0.93	0.19	32,36,38,43	0
4	NAG	F	2	14/15	0.95	0.28	43,45,50,52	0
2	NAG	C	1	14/15	0.95	0.32	59,61,65,69	0
4	NAG	F	1	14/15	0.96	0.15	31,34,39,39	0

The following is a graphical depiction of the model fit to experimental electron density for oligosaccharide. Each fit is shown from different orientation to approximate a three-dimensional view.



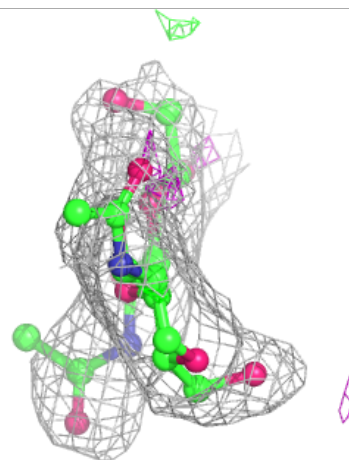
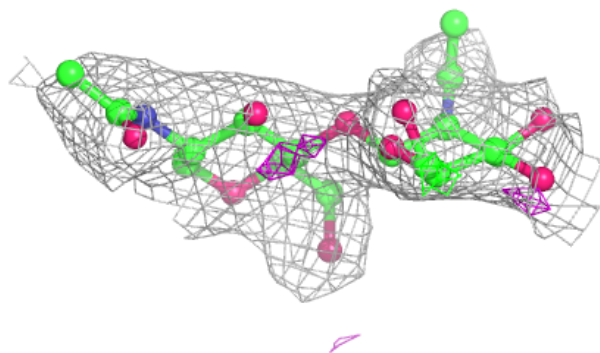
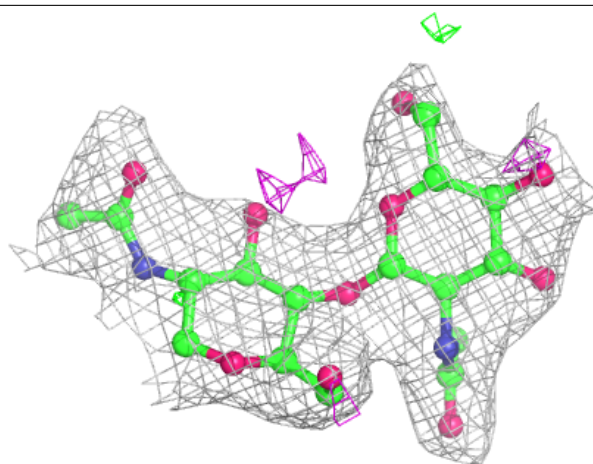
Electron density around Chain E:

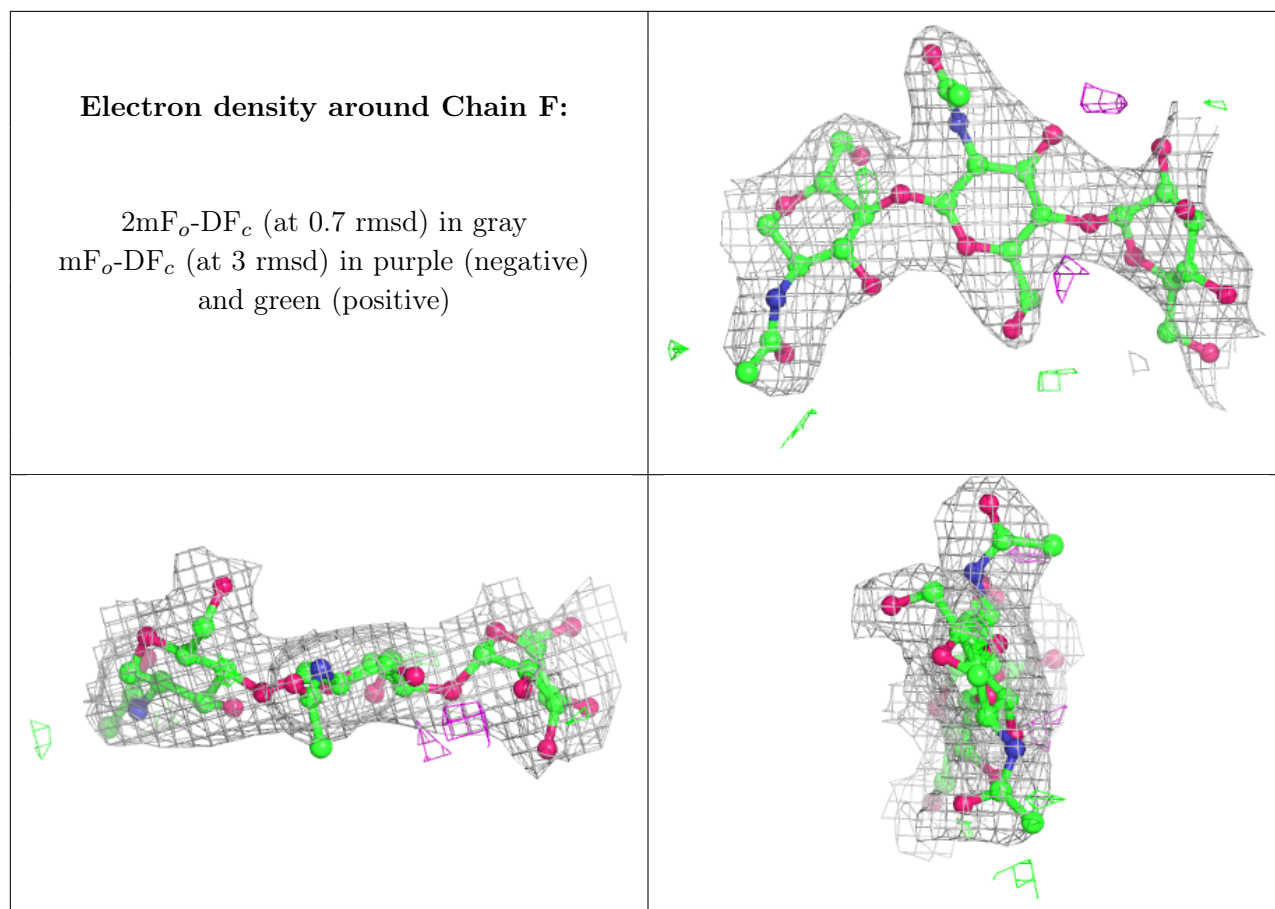
$2mF_o-DF_c$ (at 0.7 rmsd) in gray
 mF_o-DF_c (at 3 rmsd) in purple (negative)
and green (positive)



Electron density around Chain D:

$2mF_o-DF_c$ (at 0.7 rmsd) in gray
 mF_o-DF_c (at 3 rmsd) in purple (negative)
and green (positive)





6.4 Ligands [i](#)

In the following table, the Atoms column lists the number of modelled atoms in the group and the number defined in the chemical component dictionary. The B-factors column lists the minimum, median, 95th percentile and maximum values of B factors of atoms in the group. The column labelled 'Q< 0.9' lists the number of atoms with occupancy less than 0.9.

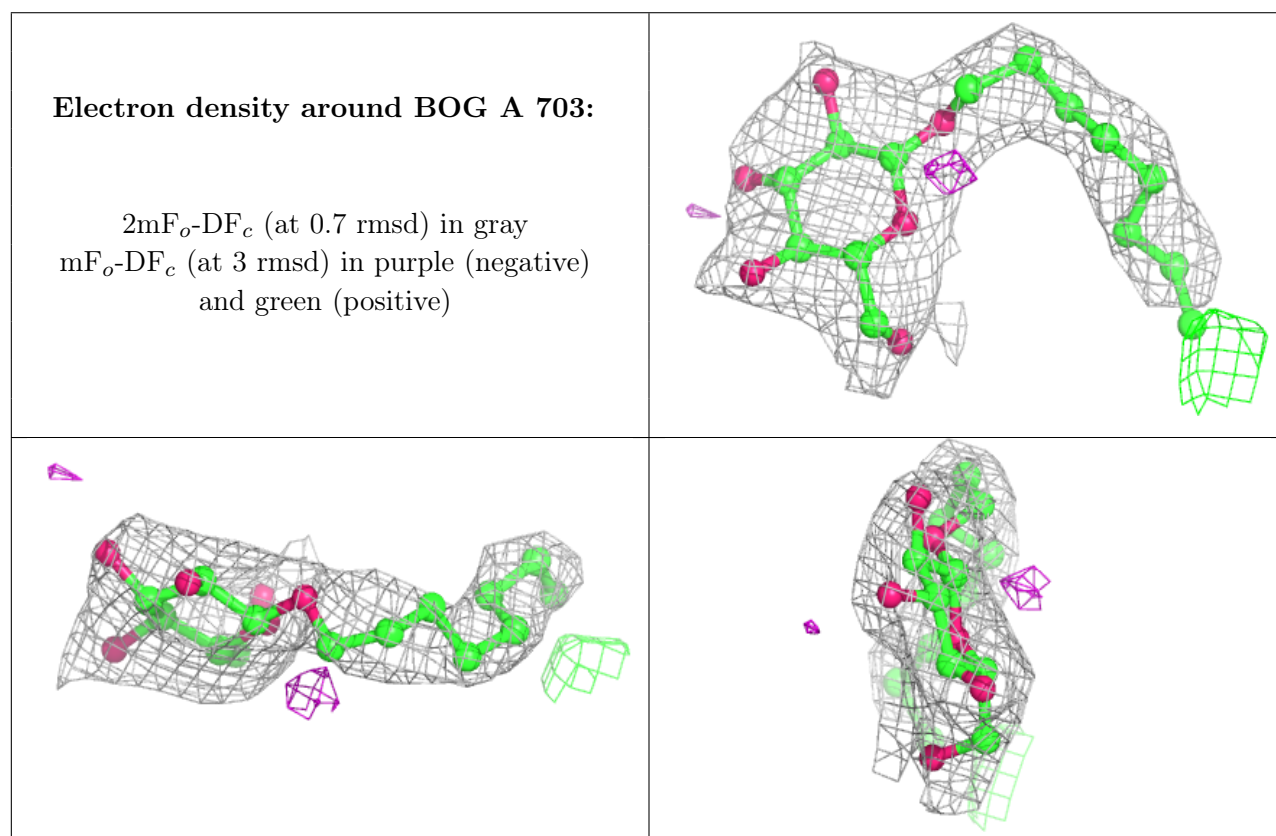
Mol	Type	Chain	Res	Atoms	RSCC	RSR	B-factors(Å ²)	Q<0.9
5	GOL	B	2	6/6	0.79	0.31	53,58,58,59	0
8	NAG	B	681	14/15	0.80	0.33	61,66,67,68	0
5	GOL	B	4	6/6	0.81	0.29	57,58,59,59	0
5	GOL	B	3	6/6	0.86	0.26	54,55,56,56	0
5	GOL	A	7	6/6	0.87	0.28	49,49,50,50	0
8	NAG	A	681	14/15	0.90	0.38	58,59,61,61	0
10	MAN	B	673	11/12	0.90	0.31	61,63,65,65	0
5	GOL	A	6	6/6	0.92	0.18	49,51,51,52	0
5	GOL	A	1	6/6	0.93	0.17	51,52,52,53	0
9	BOG	A	703	20/20	0.94	0.17	49,51,53,54	0
7	HEM	B	619	43/43	0.95	0.16	24,29,43,49	0
7	HEM	A	620	43/43	0.97	0.14	20,26,41,47	0
6	NS4	A	619	21/21	0.97	0.15	29,35,38,41	0

Continued on next page...

Continued from previous page...

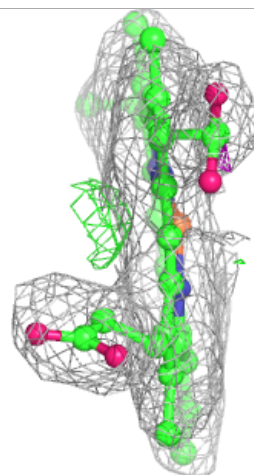
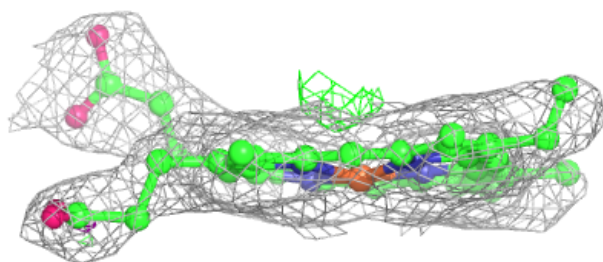
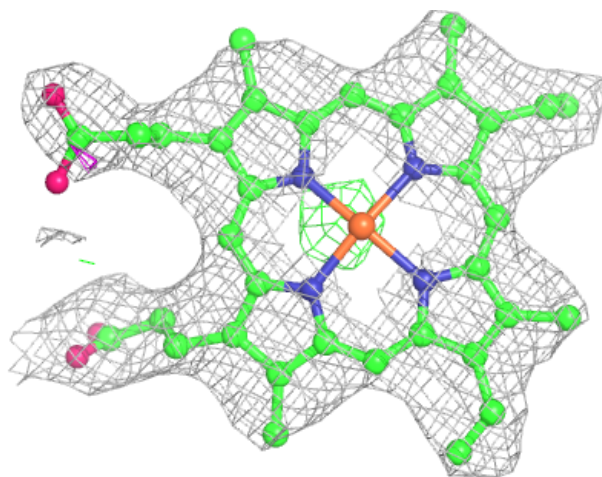
Mol	Type	Chain	Res	Atoms	RSCC	RSR	B-factors(\AA^2)	Q<0.9
6	NS4	B	1	21/21	0.97	0.15	39,42,43,46	0

The following is a graphical depiction of the model fit to experimental electron density of all instances of the Ligand of Interest. In addition, ligands with molecular weight > 250 and outliers as shown on the geometry validation Tables will also be included. Each fit is shown from different orientation to approximate a three-dimensional view.



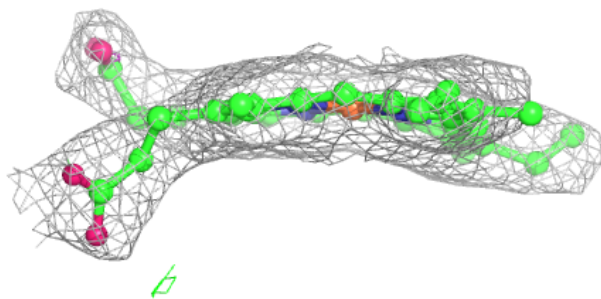
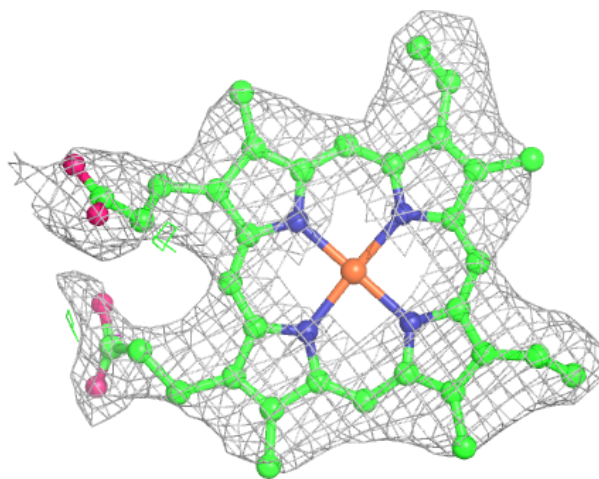
Electron density around HEM B 619:

$2mF_o-DF_c$ (at 0.7 rmsd) in gray
 mF_o-DF_c (at 3 rmsd) in purple (negative)
and green (positive)



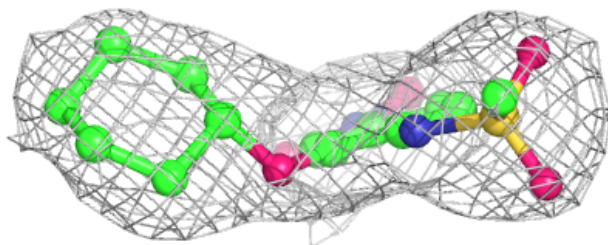
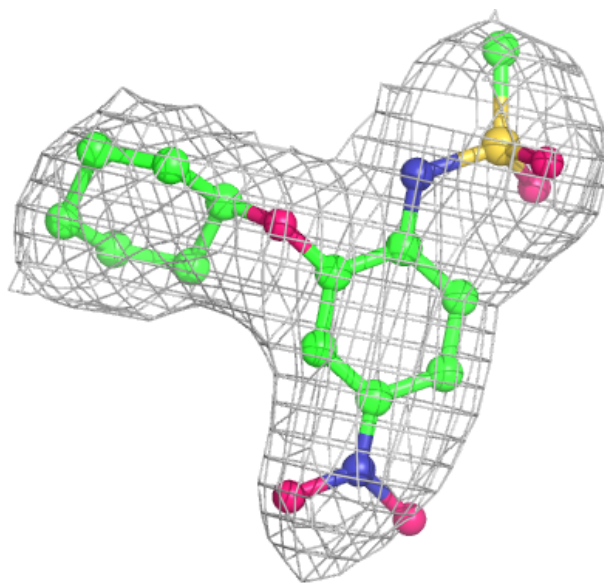
Electron density around HEM A 620:

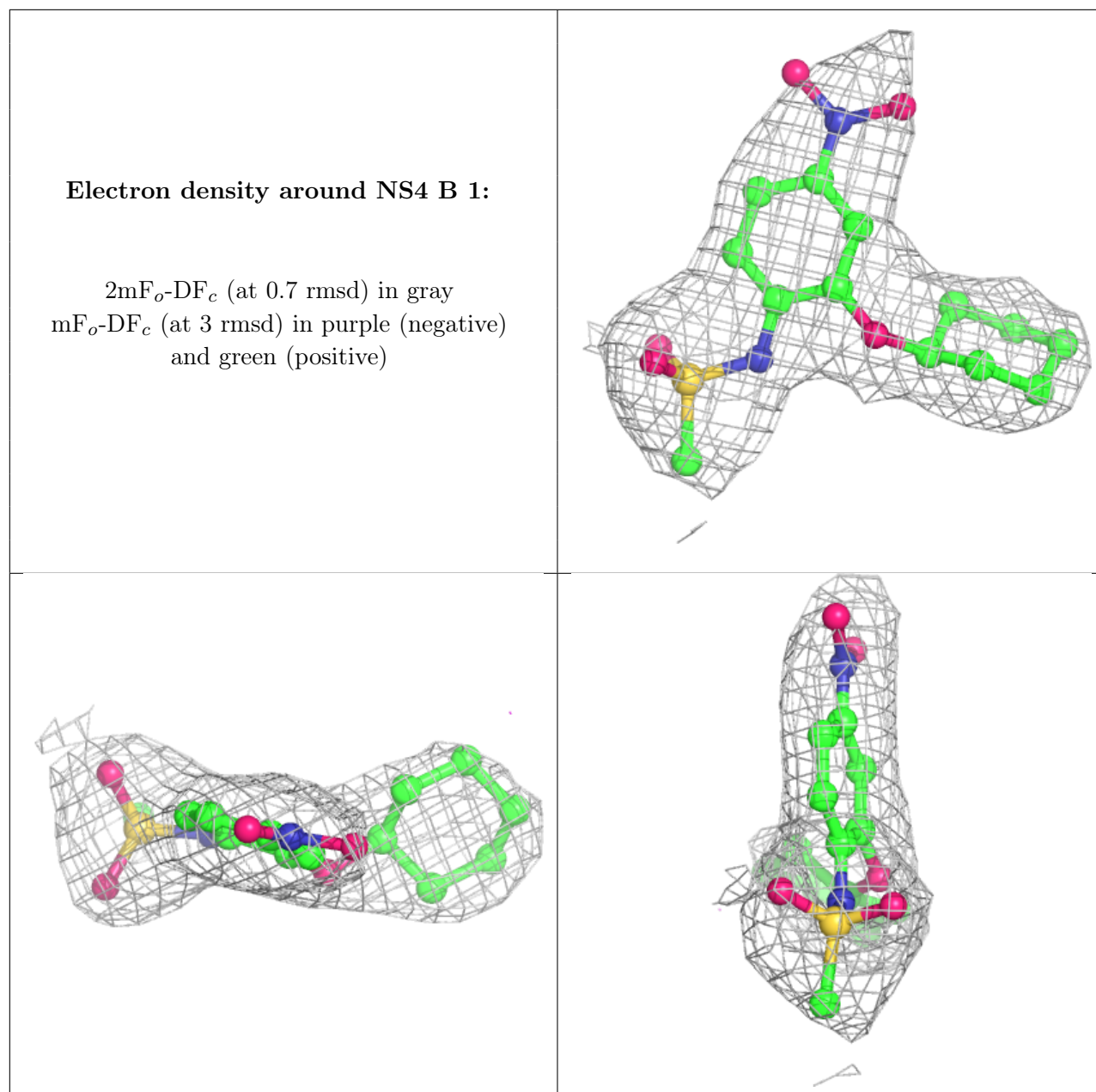
$2mF_o-DF_c$ (at 0.7 rmsd) in gray
 mF_o-DF_c (at 3 rmsd) in purple (negative)
and green (positive)



Electron density around NS4 A 619:

$2mF_o-DF_c$ (at 0.7 rmsd) in gray
 mF_o-DF_c (at 3 rmsd) in purple (negative)
and green (positive)





6.5 Other polymers [i](#)

There are no such residues in this entry.