



# Full wwPDB X-ray Structure Validation Report ⓘ

Nov 15, 2023 – 03:25 pm GMT

PDB ID : 8QMK  
Title : Enzymatically-produced complex-B bound TmHydE structure  
Authors : Omeiri, J.; Martin, L.; Usclat, A.; Cherrier, M.V.; Nicolet, Y.  
Deposited on : 2023-09-22  
Resolution : 1.30 Å(reported)

This is a Full wwPDB X-ray Structure Validation Report for a publicly released PDB entry.

We welcome your comments at [validation@mail.wwpdb.org](mailto:validation@mail.wwpdb.org)

A user guide is available at

<https://www.wwpdb.org/validation/2017/XrayValidationReportHelp>

with specific help available everywhere you see the ⓘ symbol.

The types of validation reports are described at

<http://www.wwpdb.org/validation/2017/FAQs#types>.

---

The following versions of software and data (see [references ⓘ](#)) were used in the production of this report:

MolProbity : 4.02b-467  
Mogul : 1.8.4, CSD as541be (2020)  
Xtriage (Phenix) : 1.13  
EDS : 2.36  
buster-report : 1.1.7 (2018)  
Percentile statistics : 20191225.v01 (using entries in the PDB archive December 25th 2019)  
Refmac : 5.8.0158  
CCP4 : 7.0.044 (Gargrove)  
Ideal geometry (proteins) : Engh & Huber (2001)  
Ideal geometry (DNA, RNA) : Parkinson et al. (1996)  
Validation Pipeline (wwPDB-VP) : 2.36

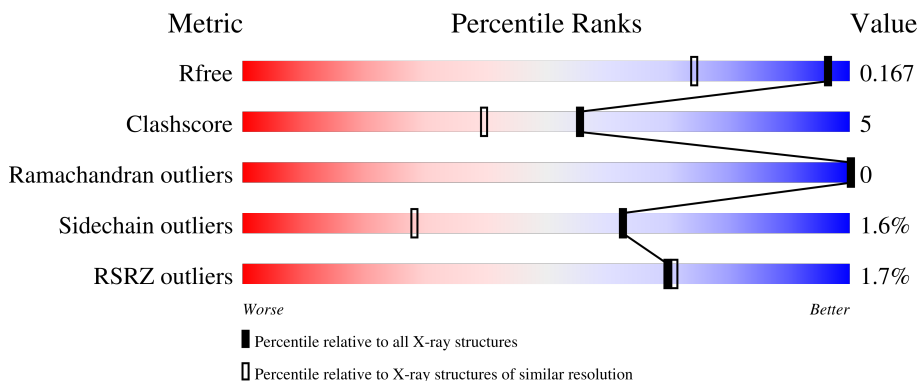
# 1 Overall quality at a glance

The following experimental techniques were used to determine the structure:

*X-RAY DIFFRACTION*


The reported resolution of this entry is 1.30 Å.

Percentile scores (ranging between 0-100) for global validation metrics of the entry are shown in the following graphic. The table shows the number of entries on which the scores are based.



Metric	Whole archive (#Entries)	Similar resolution (#Entries, resolution range(Å))
$R_{free}$	130704	1058 (1.30-1.30)
Clashscore	141614	1101 (1.30-1.30)
Ramachandran outliers	138981	1058 (1.30-1.30)
Sidechain outliers	138945	1058 (1.30-1.30)
RSRZ outliers	127900	1029 (1.30-1.30)

The table below summarises the geometric issues observed across the polymeric chains and their fit to the electron density. The red, orange, yellow and green segments of the lower bar indicate the fraction of residues that contain outliers for  $\geq 3$ , 2, 1 and 0 types of geometric quality criteria respectively. A grey segment represents the fraction of residues that are not modelled. The numeric value for each fraction is indicated below the corresponding segment, with a dot representing fractions  $\leq 5\%$ . The upper red bar (where present) indicates the fraction of residues that have poor fit to the electron density. The numeric value is given above the bar.

Mol	Chain	Length	Quality of chain
1	A	358	

The following table lists non-polymeric compounds, carbohydrate monomers and non-standard residues in protein, DNA, RNA chains that are outliers for geometric or electron-density-fit criteria:

Mol	Type	Chain	Res	Chirality	Geometry	Clashes	Electron density
3	CMO	A	502[C]	-	-	X	-

*Continued on next page...*

*Continued from previous page...*

Mol	Type	Chain	Res	Chirality	Geometry	Clashes	Electron density
3	CMO	A	503[C]	-	-	X	-
4	CYN	A	504	-	-	X	-

## 2 Entry composition [i](#)

There are 11 unique types of molecules in this entry. The entry contains 3991 atoms, of which 332 are hydrogens and 0 are deuteriums.

In the tables below, the ZeroOcc column contains the number of atoms modelled with zero occupancy, the AltConf column contains the number of residues with at least one atom in alternate conformation and the Trace column contains the number of residues modelled with at most 2 atoms.

- Molecule 1 is a protein called [FeFe] hydrogenase maturase subunit HydE.

Mol	Chain	Residues	Atoms						ZeroOcc	AltConf	Trace
			Total	C	H	N	O	S			
1	A	356	3415	1987	328	526	553	21	0	43	0

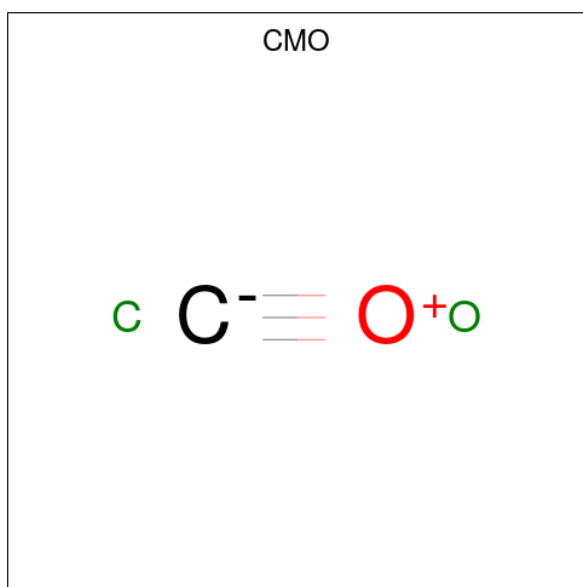
There are 15 discrepancies between the modelled and reference sequences:

Chain	Residue	Modelled	Actual	Comment	Reference
A	-9	MET	-	initiating methionine	UNP Q9X0Z6
A	-8	TRP	-	expression tag	UNP Q9X0Z6
A	-7	SER	-	expression tag	UNP Q9X0Z6
A	-6	HIS	-	expression tag	UNP Q9X0Z6
A	-5	PRO	-	expression tag	UNP Q9X0Z6
A	-4	GLN	-	expression tag	UNP Q9X0Z6
A	-3	PHE	-	expression tag	UNP Q9X0Z6
A	-2	GLU	-	expression tag	UNP Q9X0Z6
A	-1	LYS	-	expression tag	UNP Q9X0Z6
A	0	ALA	-	expression tag	UNP Q9X0Z6
A	1	SER	-	expression tag	UNP Q9X0Z6
A	291	ILE	MET	engineered mutation	UNP Q9X0Z6
A	311	SER	CYS	engineered mutation	UNP Q9X0Z6
A	319	SER	CYS	engineered mutation	UNP Q9X0Z6
A	322	SER	CYS	engineered mutation	UNP Q9X0Z6

- Molecule 2 is FE (II) ION (three-letter code: FE2) (formula: Fe) (labeled as "Ligand of Interest" by depositor).

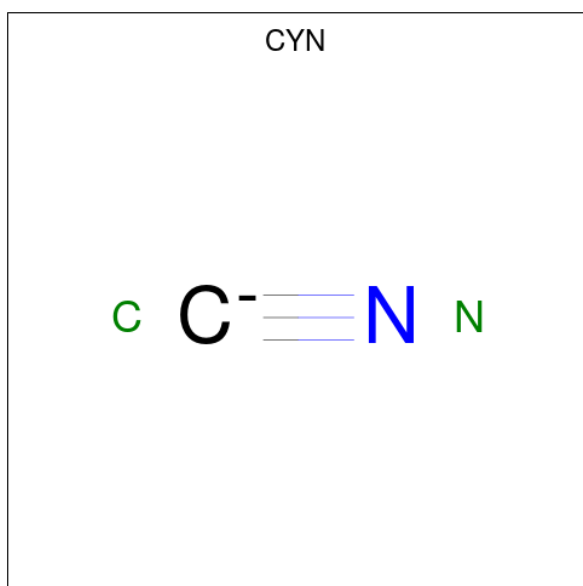
Mol	Chain	Residues	Atoms		ZeroOcc	AltConf
2	A	1	Total	Fe	0	1
			1	1		

- Molecule 3 is CARBON MONOXIDE (three-letter code: CMO) (formula: CO) (labeled as "Ligand of Interest" by depositor).



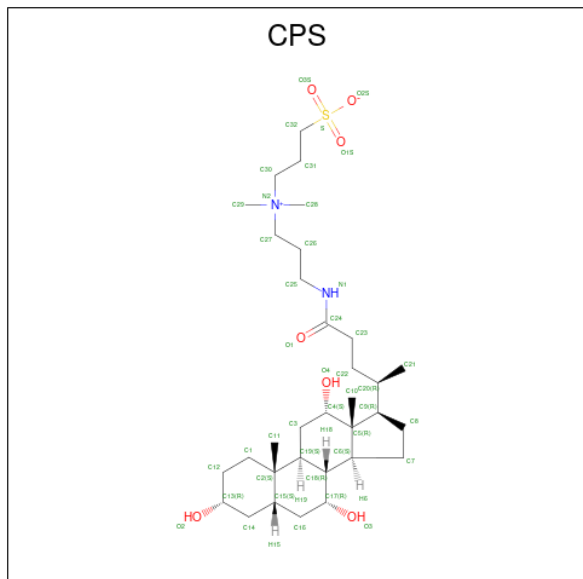
Mol	Chain	Residues	Atoms			ZeroOcc	AltConf
3	A	1	Total	C	O	0	1
			2	1	1		
3	A	1	Total	C	O	0	1
			2	1	1		

- Molecule 4 is CYANIDE ION (three-letter code: CYN) (formula: CN) (labeled as "Ligand of Interest" by depositor).



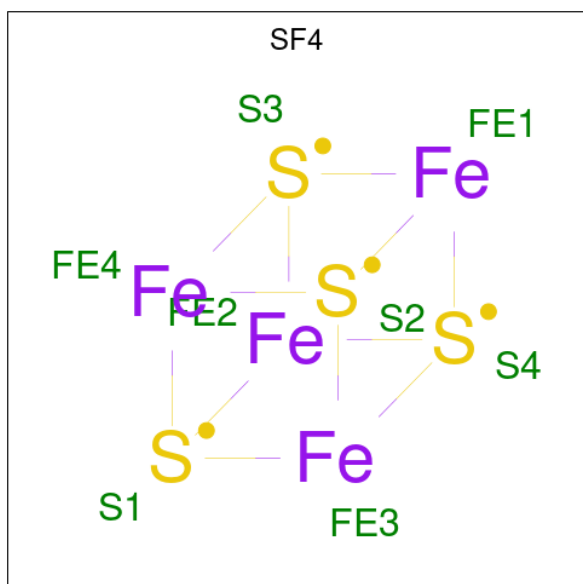
Mol	Chain	Residues	Atoms			ZeroOcc	AltConf
4	A	1	Total	C	N	0	0
			2	1	1		

- Molecule 5 is 3-[(3-CHOLAMIDOPROPYL)DIMETHYLAMMONIO]-1-PROPANESULFONATE (three-letter code: CPS) (formula:  $C_{32}H_{58}N_2O_7S$ ).



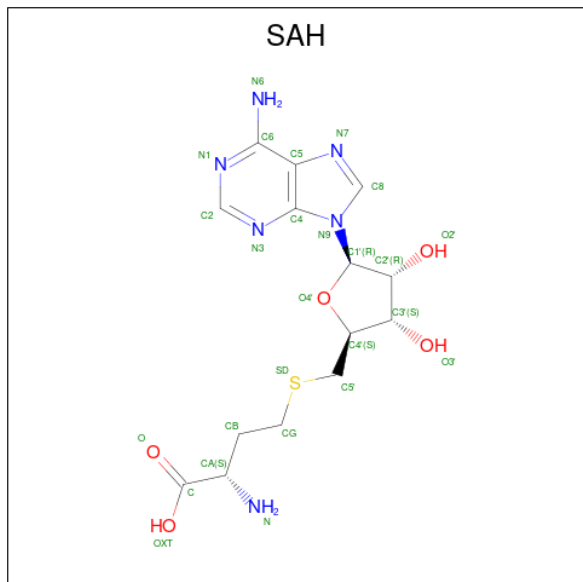
Mol	Chain	Residues	Atoms			ZeroOcc	AltConf
			Total	C	O		
5	A	1	23	20	3	0	1

- Molecule 6 is IRON/SULFUR CLUSTER (three-letter code: SF4) (formula:  $Fe_4S_4$ ).



Mol	Chain	Residues	Atoms			ZeroOcc	AltConf
			Total	Fe	S		
6	A	1	8	4	4	0	0

- Molecule 7 is S-ADENOSYL-L-HOMOCYSTEINE (three-letter code: SAH) (formula:  $C_{14}H_{20}N_6O_5S$ ).



Mol	Chain	Residues	Atoms					ZeroOcc	AltConf
7	A	1	Total	C	N	O	S	0	0
			26	14	6	5	1		

- Molecule 8 is CHLORIDE ION (three-letter code: CL) (formula: Cl).

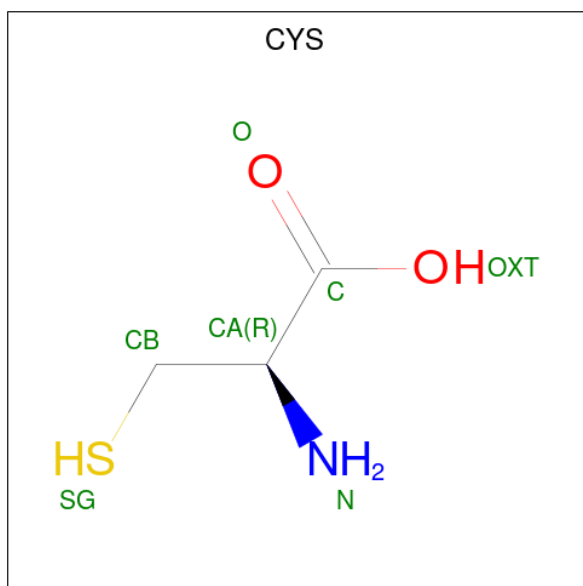
Mol	Chain	Residues	Atoms		ZeroOcc	AltConf
8	A	2	Total	Cl	0	2
			2	2		

- Molecule 9 is SULFATE ION (three-letter code: SO4) (formula:  $O_4S$ ).



Mol	Chain	Residues	Atoms			ZeroOcc	AltConf
9	A	1	Total	O	S	0	1
			10	8	2		

- Molecule 10 is CYSTEINE (three-letter code: CYS) (formula:  $C_3H_7NO_2S$ ).



Mol	Chain	Residues	Atoms					ZeroOcc	AltConf	
10	A	1	Total	C	H	N	O	S	0	0
			11	3	4	1	2	1		

- Molecule 11 is water.

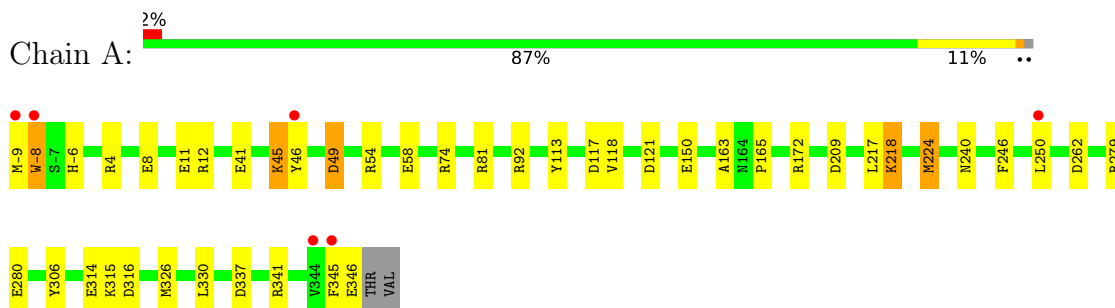


Mol	Chain	Residues	Atoms		ZeroOcc	AltConf
11	A	482	Total 489	O 489	0	28

### 3 Residue-property plots [i](#)

These plots are drawn for all protein, RNA, DNA and oligosaccharide chains in the entry. The first graphic for a chain summarises the proportions of the various outlier classes displayed in the second graphic. The second graphic shows the sequence view annotated by issues in geometry and electron density. Residues are color-coded according to the number of geometric quality criteria for which they contain at least one outlier: green = 0, yellow = 1, orange = 2 and red = 3 or more. A red dot above a residue indicates a poor fit to the electron density ( $RSRZ > 2$ ). Stretches of 2 or more consecutive residues without any outlier are shown as a green connector. Residues present in the sample, but not in the model, are shown in grey.

- Molecule 1: [FeFe] hydrogenase maturase subunit HydE



## 4 Data and refinement statistics

Property	Value	Source
Space group	P 21 21 2	Depositor
Cell constants a, b, c, $\alpha$ , $\beta$ , $\gamma$	63.83Å 83.56Å 70.84Å 90.00° 90.00° 90.00°	Depositor
Resolution (Å)	34.96 – 1.30 47.42 – 1.30	Depositor EDS
% Data completeness (in resolution range)	99.8 (34.96-1.30) 100.0 (47.42-1.30)	Depositor EDS
$R_{merge}$	(Not available)	Depositor
$R_{sym}$	(Not available)	Depositor
$\langle I/\sigma(I) \rangle$ <sup>1</sup>	2.21 (at 1.30Å)	Xtrriage
Refinement program	PHENIX 1.20.1_4487, PHENIX 1.20.1_4487	Depositor
R, $R_{free}$	0.143 , 0.168 0.142 , 0.167	Depositor DCC
$R_{free}$ test set	4685 reflections (5.00%)	wwPDB-VP
Wilson B-factor (Å <sup>2</sup> )	13.6	Xtrriage
Anisotropy	0.493	Xtrriage
Bulk solvent $k_{sol}$ (e/Å <sup>3</sup> ), $B_{sol}$ (Å <sup>2</sup> )	0.32 , 52.7	EDS
L-test for twinning <sup>2</sup>	$\langle  L  \rangle = 0.49$ , $\langle L^2 \rangle = 0.32$	Xtrriage
Estimated twinning fraction	No twinning to report.	Xtrriage
$F_o, F_c$ correlation	0.98	EDS
Total number of atoms	3991	wwPDB-VP
Average B, all atoms (Å <sup>2</sup> )	21.0	wwPDB-VP

Xtrriage's analysis on translational NCS is as follows: *The largest off-origin peak in the Patterson function is 6.37% of the height of the origin peak. No significant pseudotranslation is detected.*

<sup>1</sup>Intensities estimated from amplitudes.

<sup>2</sup>Theoretical values of  $\langle |L| \rangle$ ,  $\langle L^2 \rangle$  for acentric reflections are 0.5, 0.333 respectively for untwinned datasets, and 0.375, 0.2 for perfectly twinned datasets.

## 5 Model quality i

### 5.1 Standard geometry i

Bond lengths and bond angles in the following residue types are not validated in this section: CL, SAH, CYN, CMO, SF4, FE2, CPS, SO4

The Z score for a bond length (or angle) is the number of standard deviations the observed value is removed from the expected value. A bond length (or angle) with  $|Z| > 5$  is considered an outlier worth inspection. RMSZ is the root-mean-square of all Z scores of the bond lengths (or angles).

Mol	Chain	Bond lengths		Bond angles	
		RMSZ	# Z  >5	RMSZ	# Z  >5
1	A	1.05	7/3269 (0.2%)	1.10	16/4408 (0.4%)

All (7) bond length outliers are listed below:

Mol	Chain	Res	Type	Atoms	Z	Observed(Å)	Ideal(Å)
1	A	45[A]	LYS	CE-NZ	-6.02	1.33	1.49
1	A	45[B]	LYS	CE-NZ	-6.02	1.33	1.49
1	A	58	GLU	CD-OE2	5.75	1.31	1.25
1	A	306	TYR	CE1-CZ	-5.33	1.31	1.38
1	A	49[A]	ASP	CG-OD1	5.14	1.37	1.25
1	A	49[B]	ASP	CG-OD1	5.14	1.37	1.25
1	A	113	TYR	CE2-CZ	-5.01	1.32	1.38

All (16) bond angle outliers are listed below:

Mol	Chain	Res	Type	Atoms	Z	Observed(°)	Ideal(°)
1	A	49[A]	ASP	CB-CG-OD1	10.02	127.32	118.30
1	A	49[B]	ASP	CB-CG-OD1	10.02	127.32	118.30
1	A	337	ASP	CB-CG-OD1	7.30	124.87	118.30
1	A	117	ASP	CB-CG-OD1	7.27	124.84	118.30
1	A	49[A]	ASP	CB-CG-OD2	-7.22	111.81	118.30
1	A	49[B]	ASP	CB-CG-OD2	-7.22	111.81	118.30
1	A	172	ARG	NE-CZ-NH1	6.20	123.40	120.30
1	A	92	ARG	NE-CZ-NH2	-5.71	117.45	120.30
1	A	218	LYS	CD-CE-NZ	-5.59	98.85	111.70
1	A	54	ARG	NE-CZ-NH1	5.53	123.06	120.30
1	A	316	ASP	CB-CG-OD1	5.50	123.25	118.30
1	A	74	ARG	NE-CZ-NH2	-5.41	117.60	120.30
1	A	81	ARG	NE-CZ-NH1	5.28	122.94	120.30
1	A	279	ARG	NE-CZ-NH1	5.23	122.92	120.30

*Continued on next page...*

Continued from previous page...

Mol	Chain	Res	Type	Atoms	Z	Observed(°)	Ideal(°)
1	A	209	ASP	CB-CG-OD2	-5.10	113.71	118.30
1	A	262	ASP	CB-CG-OD1	-5.07	113.74	118.30

There are no chirality outliers.

There are no planarity outliers.

## 5.2 Too-close contacts

In the following table, the Non-H and H(model) columns list the number of non-hydrogen atoms and hydrogen atoms in the chain respectively. The H(added) column lists the number of hydrogen atoms added and optimized by MolProbity. The Clashes column lists the number of clashes within the asymmetric unit, whereas Symm-Clashes lists symmetry-related clashes.

Mol	Chain	Non-H	H(model)	H(added)	Clashes	Symm-Clashes
1	A	3087	328	3185	26	1
2	A	1	0	0	0	0
3	A	4	0	0	5	0
4	A	2	0	0	2	0
5	A	23	0	31	2	0
6	A	8	0	0	0	0
7	A	26	0	19	0	0
8	A	2	0	0	0	0
9	A	10	0	0	0	0
10	A	7	4	3	2	0
11	A	489	0	0	12	2
All	All	3659	332	3238	33	2

The all-atom clashscore is defined as the number of clashes found per 1000 atoms (including hydrogen atoms). The all-atom clashscore for this structure is 5.

All (33) close contacts within the same asymmetric unit are listed below, sorted by their clash magnitude.

Atom-1	Atom-2	Interatomic distance (Å)	Clash overlap (Å)
3:A:502[C]:CMO:C	3:A:503[C]:CMO:C	2.54	0.86
1:A:49[B]:ASP:OD1	11:A:601:HOH:O	1.96	0.82
1:A:218:LYS:NZ	11:A:862[B]:HOH:O	2.14	0.80
3:A:503[C]:CMO:C	4:A:504:CYN:C	2.61	0.79
1:A:41:GLU:O	1:A:45[B]:LYS:HD3	1.93	0.69
3:A:502[C]:CMO:C	4:A:504:CYN:C	2.73	0.66
1:A:224[A]:MET:HG2	11:A:830[A]:HOH:O	2.00	0.61

Continued on next page...

Continued from previous page...

Atom-1	Atom-2	Interatomic distance (Å)	Clash overlap (Å)
1:A:217:LEU:HD11	11:A:609:HOH:O	2.00	0.60
1:A:240[B]:ASN:HB2	11:A:654[B]:HOH:O	2.01	0.60
1:A:246:PHE:CE2	1:A:250[A]:LEU:HD11	2.39	0.58
1:A:280[B]:GLU:HG3	1:A:330:LEU:HD21	1.88	0.56
1:A:8:GLU:HG3	1:A:12:ARG:HH21	1.72	0.55
1:A:150[B]:GLU:OE1	11:A:603:HOH:O	2.18	0.53
1:A:163:ALA:O	1:A:165[B]:PRO:HD3	2.09	0.53
1:A:280[B]:GLU:CG	1:A:330:LEU:HD21	2.40	0.52
1:A:-6:HIS:ND1	11:A:602:HOH:O	2.18	0.51
1:A:46[B]:TYR:CE1	1:A:345[B]:PHE:HA	2.46	0.50
1:A:46[B]:TYR:HE1	1:A:345[B]:PHE:HA	1.78	0.49
1:A:224[A]:MET:HG3	11:A:610:HOH:O	2.14	0.48
1:A:49[A]:ASP:OD2	11:A:604:HOH:O	2.20	0.48
1:A:314[A]:GLU:HB3	11:A:691:HOH:O	2.14	0.48
3:A:503[C]:CMO:C	10:A:511:CYS:SG	3.02	0.47
1:A:118:VAL:HA	1:A:121[B]:ASP:OD2	2.16	0.45
3:A:502[C]:CMO:C	10:A:511:CYS:SG	3.04	0.45
5:A:505[A]:CPS:H3A	5:A:505[A]:CPS:H11B	1.79	0.44
1:A:-9[B]:MET:HG2	1:A:-8[B]:TRP:H	1.82	0.44
1:A:224[B]:MET:CG	11:A:610:HOH:O	2.66	0.42
1:A:224[B]:MET:HG3	11:A:610:HOH:O	2.19	0.42
1:A:314[B]:GLU:CD	1:A:315:LYS:H	2.23	0.41
5:A:505[A]:CPS:H3	5:A:505[A]:CPS:H1	1.86	0.41

All (2) symmetry-related close contacts are listed below. The label for Atom-2 includes the symmetry operator and encoded unit-cell translations to be applied.

Atom-1	Atom-2	Interatomic distance (Å)	Clash overlap (Å)
1:A:346:GLU:O	11:A:1058:HOH:O[4_555]	2.12	0.08
11:A:971:HOH:O	11:A:1077:HOH:O[4_554]	2.14	0.06

## 5.3 Torsion angles [i](#)

### 5.3.1 Protein backbone [i](#)

In the following table, the Percentiles column shows the percent Ramachandran outliers of the chain as a percentile score with respect to all X-ray entries followed by that with respect to entries of similar resolution.

The Analysed column shows the number of residues for which the backbone conformation was

analysed, and the total number of residues.

Mol	Chain	Analysed	Favoured	Allowed	Outliers	Percentiles	
1	A	394/358 (110%)	383 (97%)	11 (3%)	0	100	100

There are no Ramachandran outliers to report.

### 5.3.2 Protein sidechains [i](#)

In the following table, the Percentiles column shows the percent sidechain outliers of the chain as a percentile score with respect to all X-ray entries followed by that with respect to entries of similar resolution.

The Analysed column shows the number of residues for which the sidechain conformation was analysed, and the total number of residues.

Mol	Chain	Analysed	Rotameric	Outliers	Percentiles	
1	A	347/313 (111%)	338 (97%)	9 (3%)	46	10

All (9) residues with a non-rotameric sidechain are listed below:

Mol	Chain	Res	Type
1	A	-8[A]	TRP
1	A	-8[B]	TRP
1	A	4	ARG
1	A	11	GLU
1	A	224[A]	MET
1	A	224[B]	MET
1	A	224[C]	MET
1	A	224[D]	MET
1	A	341	ARG

Sometimes sidechains can be flipped to improve hydrogen bonding and reduce clashes. There are no such sidechains identified.

### 5.3.3 RNA [i](#)

There are no RNA molecules in this entry.

## 5.4 Non-standard residues in protein, DNA, RNA chains [i](#)

There are no non-standard protein/DNA/RNA residues in this entry.

## 5.5 Carbohydrates [i](#)

There are no monosaccharides in this entry.

## 5.6 Ligand geometry [i](#)

Of 12 ligands modelled in this entry, 3 are monoatomic - leaving 9 for Mogul analysis.

In the following table, the Counts columns list the number of bonds (or angles) for which Mogul statistics could be retrieved, the number of bonds (or angles) that are observed in the model and the number of bonds (or angles) that are defined in the Chemical Component Dictionary. The Link column lists molecule types, if any, to which the group is linked. The Z score for a bond length (or angle) is the number of standard deviations the observed value is removed from the expected value. A bond length (or angle) with  $|Z| > 2$  is considered an outlier worth inspection. RMSZ is the root-mean-square of all Z scores of the bond lengths (or angles).

Mol	Type	Chain	Res	Link	Bond lengths			Bond angles		
					Counts	RMSZ	# Z  > 2	Counts	RMSZ	# Z  > 2
4	CYN	A	504	-	0,1,1	-	-	-		
6	SF4	A	506	7,1	0,12,12	-	-	-		
10	CYS	A	511	2	5,6,6	1.65	2 (40%)	5,7,7	2.14	3 (60%)
3	CMO	A	502[C]	-	0,1,1	-	-	-		
7	SAH	A	507	6	24,28,28	1.25	2 (8%)	25,40,40	1.68	6 (24%)
9	SO4	A	510[B]	-	4,4,4	0.10	0	6,6,6	0.13	0
3	CMO	A	503[C]	-	0,1,1	-	-	-		
9	SO4	A	510[A]	-	4,4,4	0.23	0	6,6,6	0.19	0
5	CPS	A	505[A]	-	26,26,45	1.00	0	40,43,70	1.82	10 (25%)

In the following table, the Chirals column lists the number of chiral outliers, the number of chiral centers analysed, the number of these observed in the model and the number defined in the Chemical Component Dictionary. Similar counts are reported in the Torsion and Rings columns. '-' means no outliers of that kind were identified.

Mol	Type	Chain	Res	Link	Chirals	Torsions	Rings
7	SAH	A	507	6	-	2/11/31/31	0/3/3/3
10	CYS	A	511	2	-	1/6/6/6	-
5	CPS	A	505[A]	-	-	-	0/4/4/4
6	SF4	A	506	7,1	-	-	0/6/5/5

All (4) bond length outliers are listed below:

Mol	Chain	Res	Type	Atoms	Z	Observed(Å)	Ideal(Å)
10	A	511	CYS	OXT-C	-2.64	1.21	1.30

*Continued on next page...*



Continued from previous page...

Mol	Chain	Res	Type	Atoms	Z	Observed(Å)	Ideal(Å)
7	A	507	SAH	O4'-C1'	2.30	1.44	1.41
7	A	507	SAH	C2-N3	2.20	1.35	1.32
10	A	511	CYS	O-C	2.09	1.28	1.22

All (19) bond angle outliers are listed below:

Mol	Chain	Res	Type	Atoms	Z	Observed(°)	Ideal(°)
7	A	507	SAH	C5-C6-N6	4.11	126.59	120.35
5	A	505[A]	CPS	C11-C2-C19	-4.04	105.61	111.18
5	A	505[A]	CPS	C5-C6-C18	-3.71	110.00	114.74
5	A	505[A]	CPS	C3-C19-C2	-3.61	110.00	113.73
5	A	505[A]	CPS	C19-C2-C15	3.42	113.38	108.58
7	A	507	SAH	C4-C5-N7	-3.14	106.13	109.40
10	A	511	CYS	O-C-CA	-3.14	111.07	122.14
10	A	511	CYS	OXT-C-CA	2.89	123.22	113.38
7	A	507	SAH	C3'-C2'-C1'	2.74	105.10	100.98
7	A	507	SAH	N3-C2-N1	-2.66	124.52	128.68
5	A	505[A]	CPS	C16-C15-C2	-2.57	109.92	112.66
5	A	505[A]	CPS	C10-C5-C4	-2.31	106.72	109.07
5	A	505[A]	CPS	C3-C19-C18	2.25	114.18	110.88
5	A	505[A]	CPS	C1-C2-C19	-2.23	107.85	111.35
7	A	507	SAH	OXT-C-CA	2.19	120.84	113.38
5	A	505[A]	CPS	C1-C2-C15	2.17	110.98	107.77
5	A	505[A]	CPS	C7-C6-C5	2.14	105.65	103.55
10	A	511	CYS	CA-CB-SG	-2.14	109.84	114.44
7	A	507	SAH	CB-CG-SD	2.08	117.97	113.31

There are no chirality outliers.

All (3) torsion outliers are listed below:

Mol	Chain	Res	Type	Atoms
7	A	507	SAH	C-CA-CB-CG
7	A	507	SAH	N-CA-CB-CG
10	A	511	CYS	N-CA-CB-SG

There are no ring outliers.

5 monomers are involved in 7 short contacts:

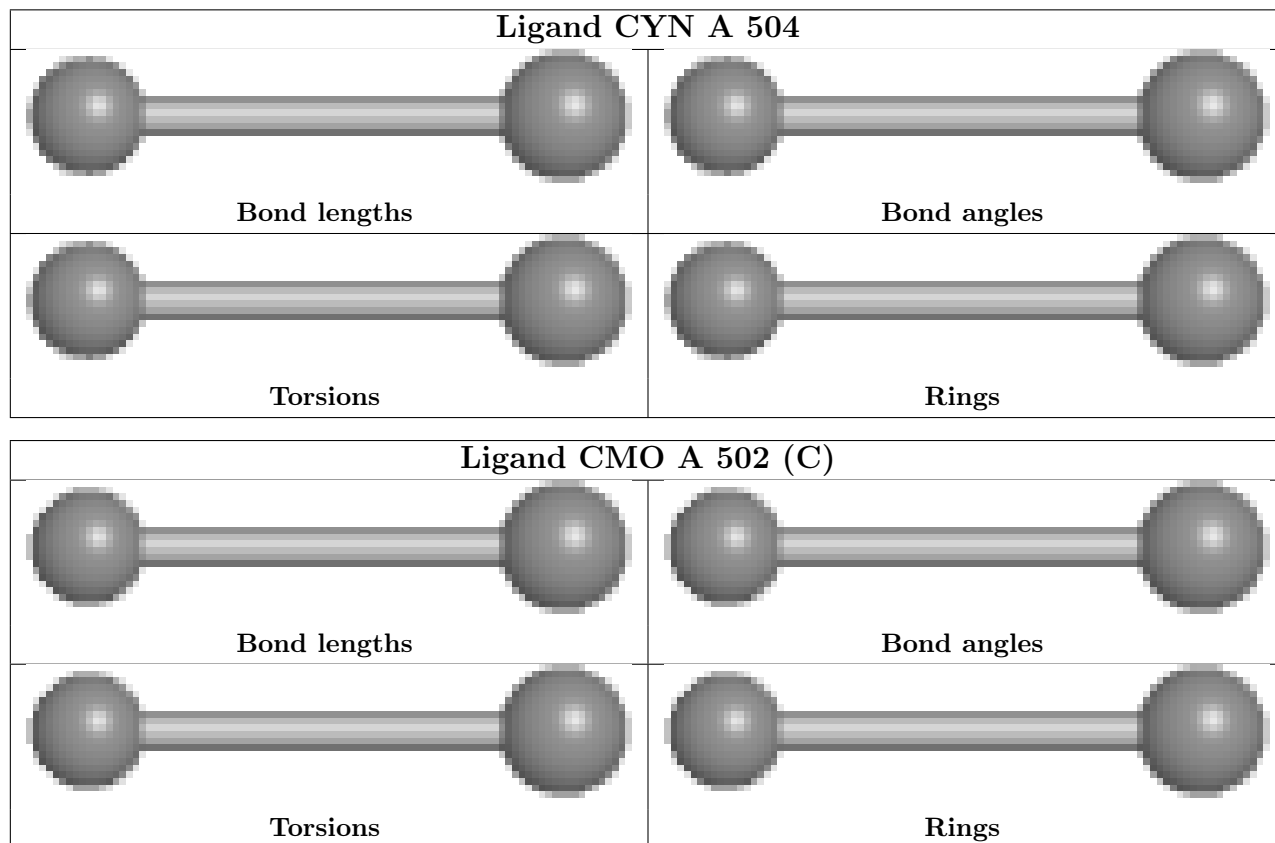
Mol	Chain	Res	Type	Clashes	Symm-Clashes
4	A	504	CYN	2	0
10	A	511	CYS	2	0

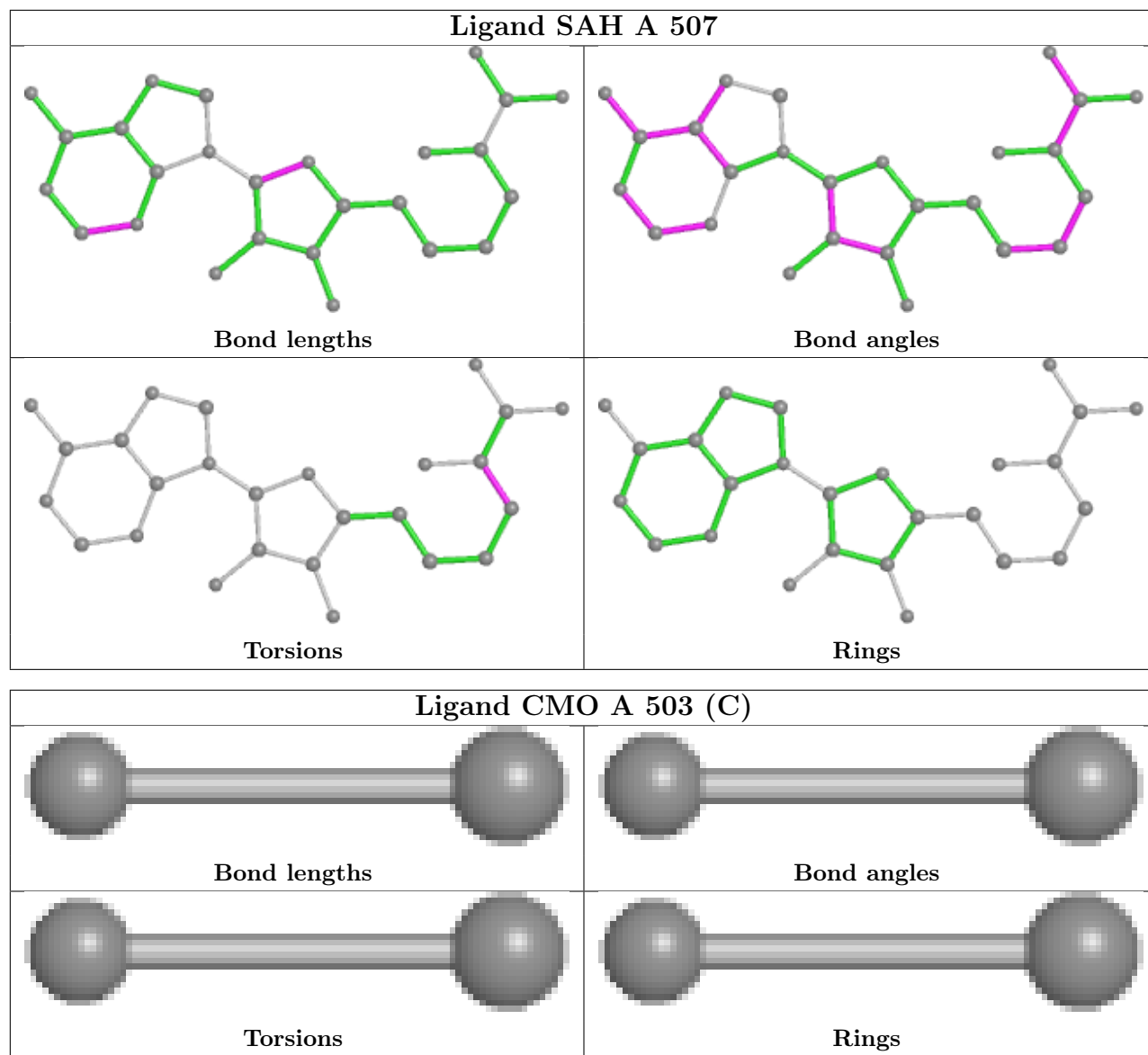
Continued on next page...

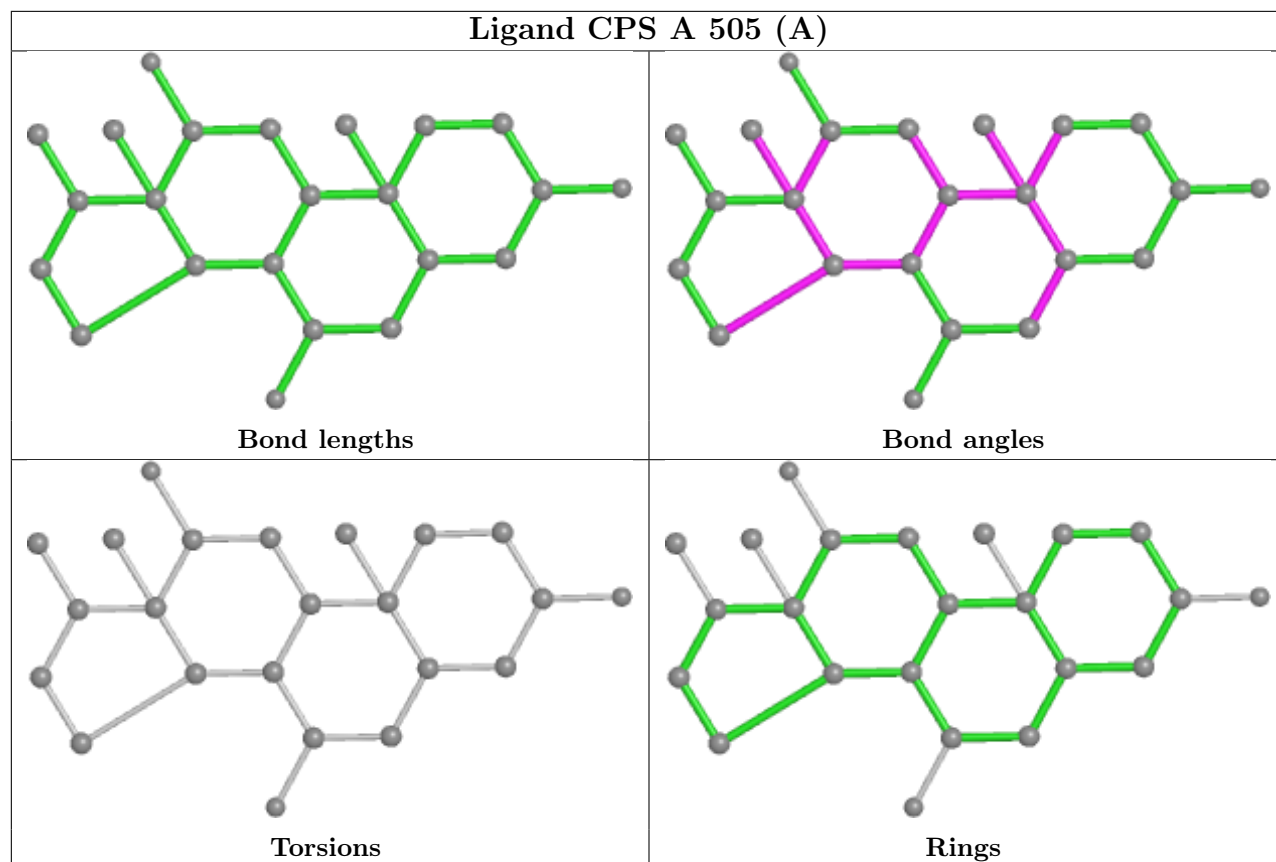
*Continued from previous page...*

Mol	Chain	Res	Type	Clashes	Symm-Clashes
3	A	502[C]	CMO	3	0
3	A	503[C]	CMO	3	0
5	A	505[A]	CPS	2	0

The following is a two-dimensional graphical depiction of Mogul quality analysis of bond lengths, bond angles, torsion angles, and ring geometry for all instances of the Ligand of Interest. In addition, ligands with molecular weight > 250 and outliers as shown on the validation Tables will also be included. For torsion angles, if less than 5% of the Mogul distribution of torsion angles is within 10 degrees of the torsion angle in question, then that torsion angle is considered an outlier. Any bond that is central to one or more torsion angles identified as an outlier by Mogul will be highlighted in the graph. For rings, the root-mean-square deviation (RMSD) between the ring in question and similar rings identified by Mogul is calculated over all ring torsion angles. If the average RMSD is greater than 60 degrees and the minimal RMSD between the ring in question and any Mogul-identified rings is also greater than 60 degrees, then that ring is considered an outlier. The outliers are highlighted in purple. The color gray indicates Mogul did not find sufficient equivalents in the CSD to analyse the geometry.







## 5.7 Other polymers [i](#)

There are no such residues in this entry.

## 5.8 Polymer linkage issues [i](#)

There are no chain breaks in this entry.

## 6 Fit of model and data [i](#)

### 6.1 Protein, DNA and RNA chains [i](#)

In the following table, the column labelled ‘#RSRZ> 2’ contains the number (and percentage) of RSRZ outliers, followed by percent RSRZ outliers for the chain as percentile scores relative to all X-ray entries and entries of similar resolution. The OWAB column contains the minimum, median, 95<sup>th</sup> percentile and maximum values of the occupancy-weighted average B-factor per residue. The column labelled ‘Q< 0.9’ lists the number of (and percentage) of residues with an average occupancy less than 0.9.

Mol	Chain	Analysed	<RSRZ>	#RSRZ>2	OWAB(Å <sup>2</sup> )	Q<0.9
1	A	356/358 (99%)	0.05	6 (1%) 70 71	10, 16, 34, 67	1 (0%)

All (6) RSRZ outliers are listed below:

Mol	Chain	Res	Type	RSRZ
1	A	-8[A]	TRP	5.8
1	A	-9[A]	MET	5.5
1	A	345[A]	PHE	3.5
1	A	344	VAL	2.7
1	A	46[A]	TYR	2.6
1	A	250[A]	LEU	2.2

### 6.2 Non-standard residues in protein, DNA, RNA chains [i](#)

There are no non-standard protein/DNA/RNA residues in this entry.

### 6.3 Carbohydrates [i](#)

There are no monosaccharides in this entry.

### 6.4 Ligands [i](#)

In the following table, the Atoms column lists the number of modelled atoms in the group and the number defined in the chemical component dictionary. The B-factors column lists the minimum, median, 95<sup>th</sup> percentile and maximum values of B factors of atoms in the group. The column labelled ‘Q< 0.9’ lists the number of atoms with occupancy less than 0.9.

Mol	Type	Chain	Res	Atoms	RSCC	RSR	B-factors(Å <sup>2</sup> )	Q<0.9
9	SO4	A	510[A]	5/5	0.52	0.40	87,87,89,89	5

*Continued on next page...*

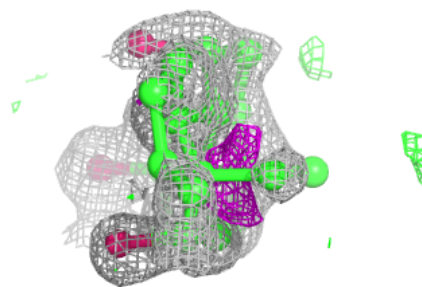
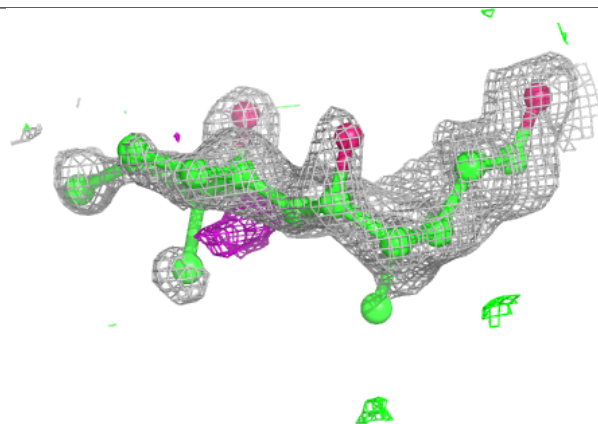
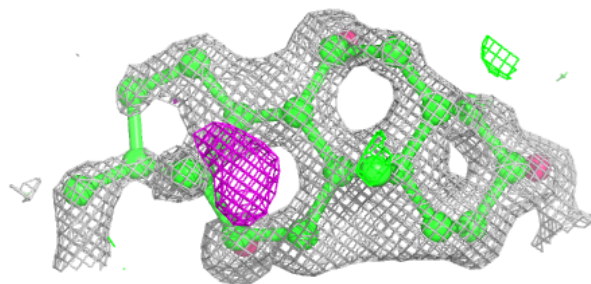
Continued from previous page...

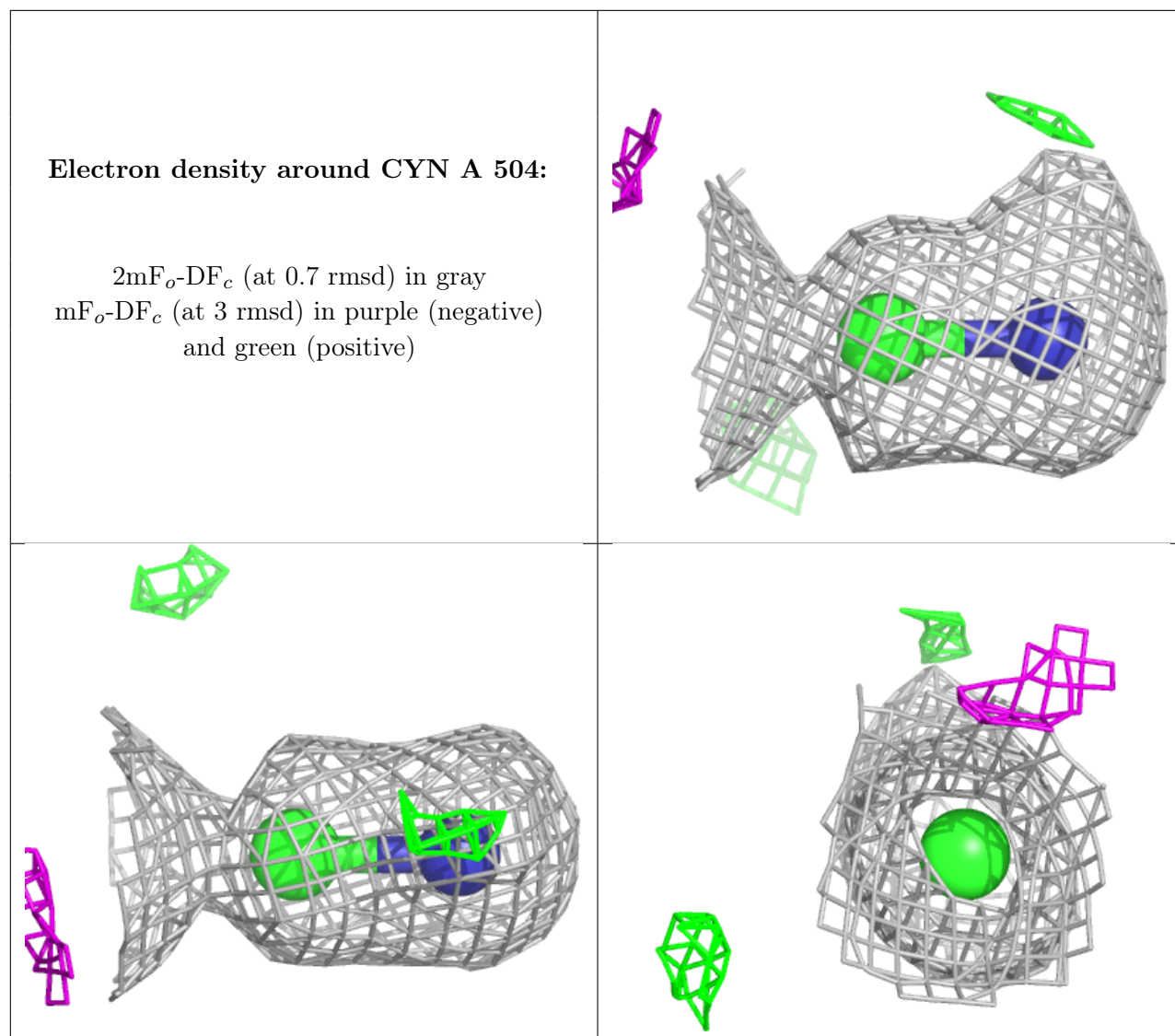
Mol	Type	Chain	Res	Atoms	RSCC	RSR	B-factors( $\text{\AA}^2$ )	Q<0.9
9	SO4	A	510[B]	5/5	0.52	0.40	45,48,48,50	5
5	CPS	A	505[A]	23/42	0.73	0.17	38,41,46,49	23
4	CYN	A	504	2/2	0.96	0.08	15,15,15,16	0
3	CMO	A	503[C]	2/2	0.96	0.11	13,13,13,14	0
7	SAH	A	507	26/26	0.97	0.07	10,12,14,15	0
10	CYS	A	511	7/7	0.97	0.12	15,18,20,22	0
6	SF4	A	506	8/8	0.99	0.06	11,11,12,12	0
3	CMO	A	502[C]	2/2	0.99	0.07	13,13,13,15	0
8	CL	A	509[A]	1/1	0.99	0.09	16,16,16,16	1
2	FE2	A	501[A]	1/1	1.00	0.06	12,12,12,12	1
8	CL	A	508[A]	1/1	1.00	0.06	15,15,15,15	1

The following is a graphical depiction of the model fit to experimental electron density of all instances of the Ligand of Interest. In addition, ligands with molecular weight > 250 and outliers as shown on the geometry validation Tables will also be included. Each fit is shown from different orientation to approximate a three-dimensional view.

**Electron density around CPS A 505 (A):**

2mF<sub>o</sub>-DF<sub>c</sub> (at 0.7 rmsd) in gray  
 mF<sub>o</sub>-DF<sub>c</sub> (at 3 rmsd) in purple (negative)  
 and green (positive)

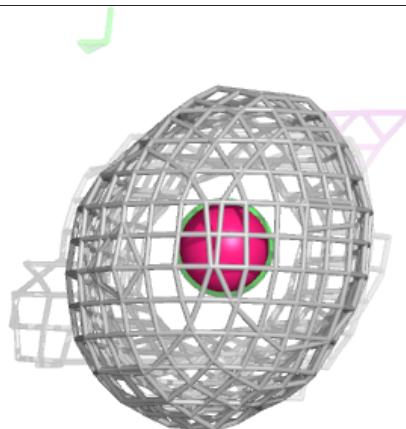
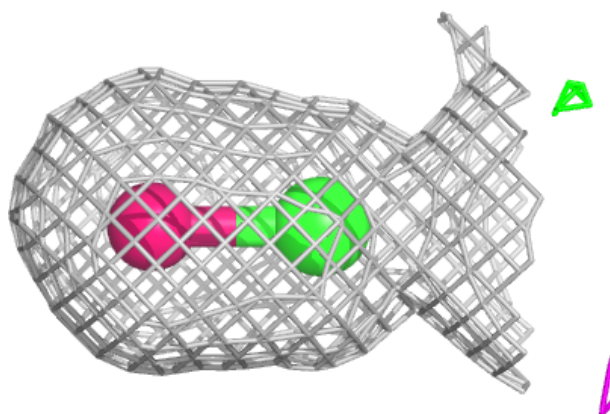
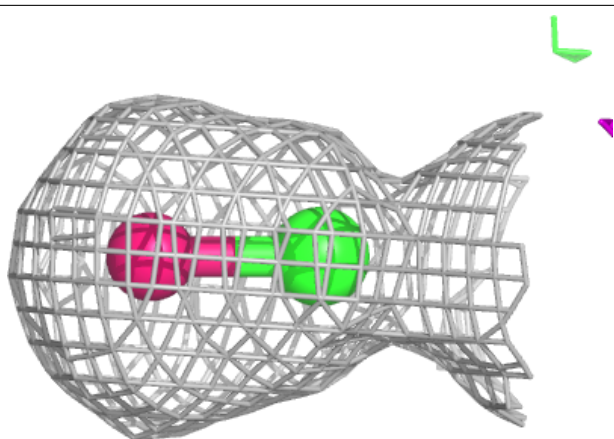




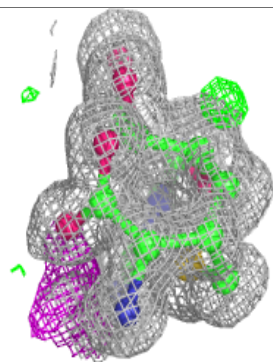
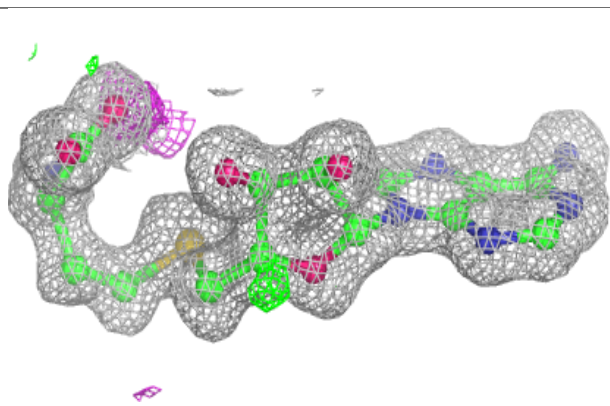
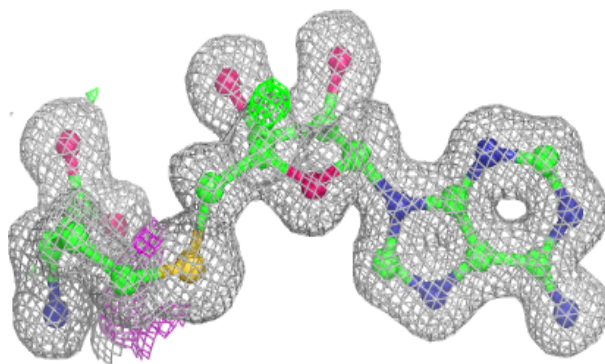


**Electron density around CMO A 503 (C):**

$2mF_o-DF_c$  (at 0.7 rmsd) in gray  
 $mF_o-DF_c$  (at 3 rmsd) in purple (negative)  
and green (positive)

**Electron density around SAH A 507:**

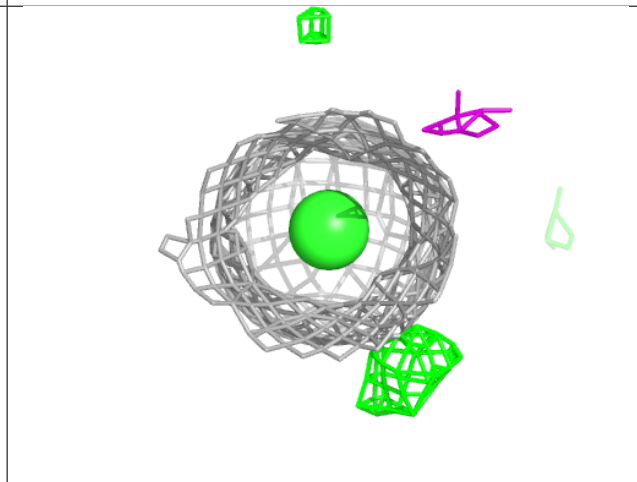
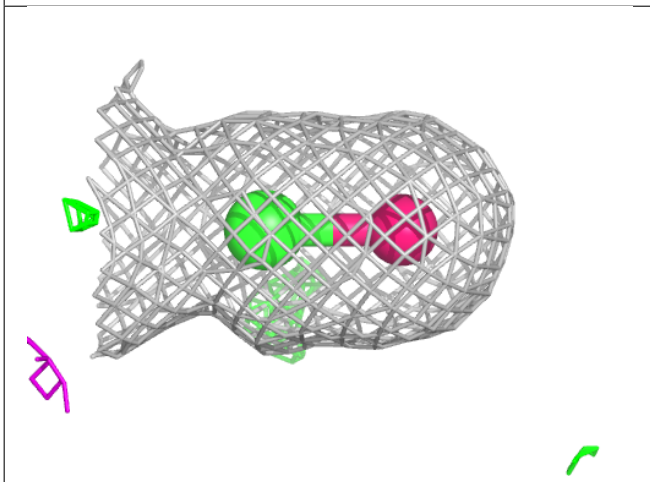
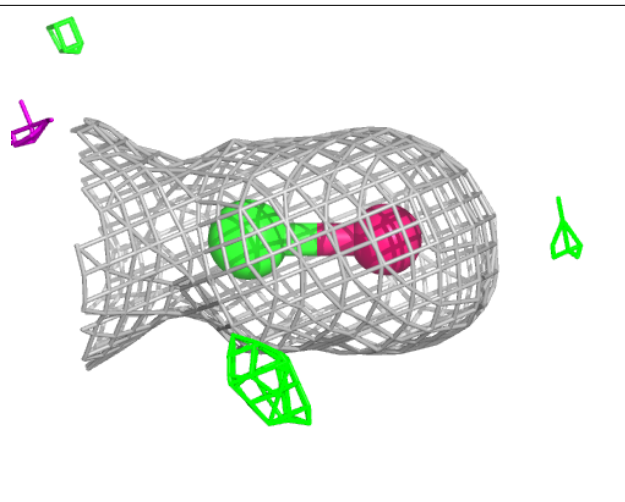
$2mF_o-DF_c$  (at 0.7 rmsd) in gray  
 $mF_o-DF_c$  (at 3 rmsd) in purple (negative)  
and green (positive)

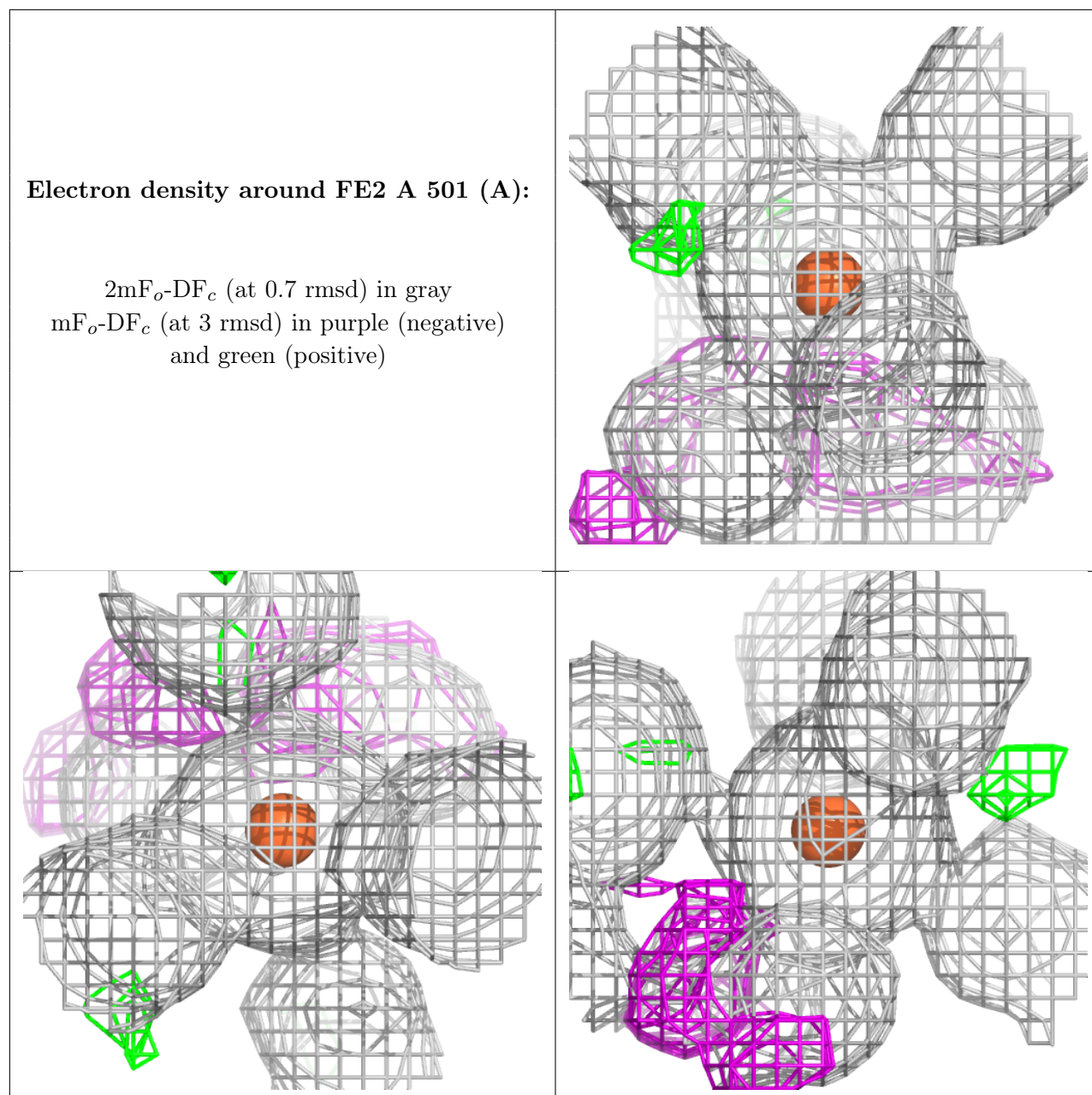




**Electron density around CMO A 502 (C):**

$2mF_o-DF_c$  (at 0.7 rmsd) in gray  
 $mF_o-DF_c$  (at 3 rmsd) in purple (negative)  
and green (positive)





## 6.5 Other polymers ⓘ

There are no such residues in this entry.