



Full wwPDB X-ray Structure Validation Report ⓘ

Aug 22, 2023 – 02:30 PM EDT

PDB ID : 2QS3
Title : Crystal structure of the GluR5 ligand binding core dimer in complex with
UBP316 at 1.76 Angstroms resolution
Authors : Alushin, G.M.; Jane, D.E.; Mayer, M.L.
Deposited on : 2007-07-30
Resolution : 1.76 Å(reported)

This is a Full wwPDB X-ray Structure Validation Report for a publicly released PDB entry.

We welcome your comments at validation@mail.wwpdb.org

A user guide is available at

<https://www.wwpdb.org/validation/2017/XrayValidationReportHelp>

with specific help available everywhere you see the ⓘ symbol.

The types of validation reports are described at

<http://www.wwpdb.org/validation/2017/FAQs#types>.

The following versions of software and data (see [references ⓘ](#)) were used in the production of this report:

MolProbity : 4.02b-467
Mogul : 1.8.5 (274361), CSD as541be (2020)
Xtriage (Phenix) : 1.13
EDS : 2.35
buster-report : 1.1.7 (2018)
Percentile statistics : 20191225.v01 (using entries in the PDB archive December 25th 2019)
Refmac : 5.8.0158
CCP4 : 7.0.044 (Gargrove)
Ideal geometry (proteins) : Engh & Huber (2001)
Ideal geometry (DNA, RNA) : Parkinson et al. (1996)
Validation Pipeline (wwPDB-VP) : 2.35

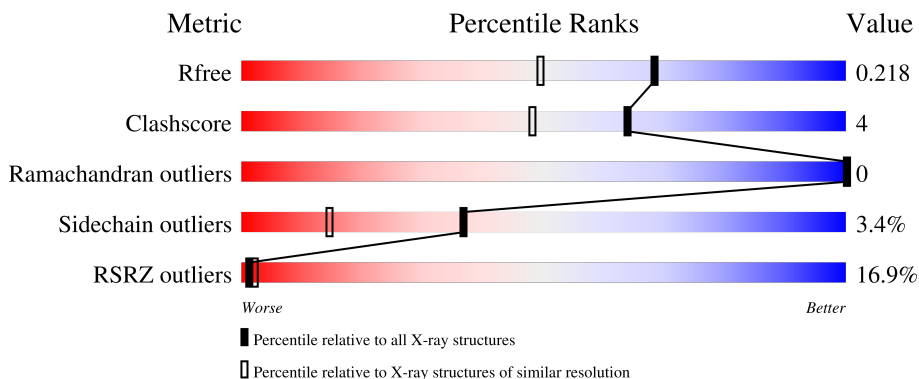
1 Overall quality at a glance

The following experimental techniques were used to determine the structure:

X-RAY DIFFRACTION

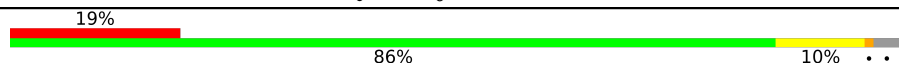
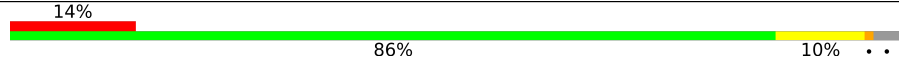
The reported resolution of this entry is 1.76 Å.

Percentile scores (ranging between 0-100) for global validation metrics of the entry are shown in the following graphic. The table shows the number of entries on which the scores are based.



Metric	Whole archive (#Entries)	Similar resolution (#Entries, resolution range(Å))
R_{free}	130704	2340 (1.76-1.76)
Clashscore	141614	2466 (1.76-1.76)
Ramachandran outliers	138981	2437 (1.76-1.76)
Sidechain outliers	138945	2437 (1.76-1.76)
RSRZ outliers	127900	2298 (1.76-1.76)

The table below summarises the geometric issues observed across the polymeric chains and their fit to the electron density. The red, orange, yellow and green segments of the lower bar indicate the fraction of residues that contain outliers for ≥ 3 , 2, 1 and 0 types of geometric quality criteria respectively. A grey segment represents the fraction of residues that are not modelled. The numeric value for each fraction is indicated below the corresponding segment, with a dot representing fractions $\leq 5\%$. The upper red bar (where present) indicates the fraction of residues that have poor fit to the electron density. The numeric value is given above the bar.

Mol	Chain	Length	Quality of chain
1	A	258	
1	B	258	

2 Entry composition [i](#)

There are 5 unique types of molecules in this entry. The entry contains 4761 atoms, of which 0 are hydrogens and 0 are deuteriums.

In the tables below, the ZeroOcc column contains the number of atoms modelled with zero occupancy, the AltConf column contains the number of residues with at least one atom in alternate conformation and the Trace column contains the number of residues modelled with at most 2 atoms.

- Molecule 1 is a protein called Glutamate receptor, ionotropic kainate 1.

Mol	Chain	Residues	Atoms					ZeroOcc	AltConf	Trace
			Total	C	N	O	S			
1	A	251	2132	1356	354	407	15	0	15	0
1	B	251	2126	1352	355	405	14	0	14	0

There are 10 discrepancies between the modelled and reference sequences:

Chain	Residue	Modelled	Actual	Comment	Reference
A	1	GLY	-	expression tag	UNP P22756
A	2	SER	-	expression tag	UNP P22756
A	117	GLY	-	linker	UNP P22756
A	118	THR	-	linker	UNP P22756
A	258	SER	GLU	engineered mutation	UNP P22756
B	1	GLY	-	expression tag	UNP P22756
B	2	SER	-	expression tag	UNP P22756
B	117	GLY	-	linker	UNP P22756
B	118	THR	-	linker	UNP P22756
B	258	SER	GLU	engineered mutation	UNP P22756

- Molecule 2 is CHLORIDE ION (three-letter code: CL) (formula: Cl).

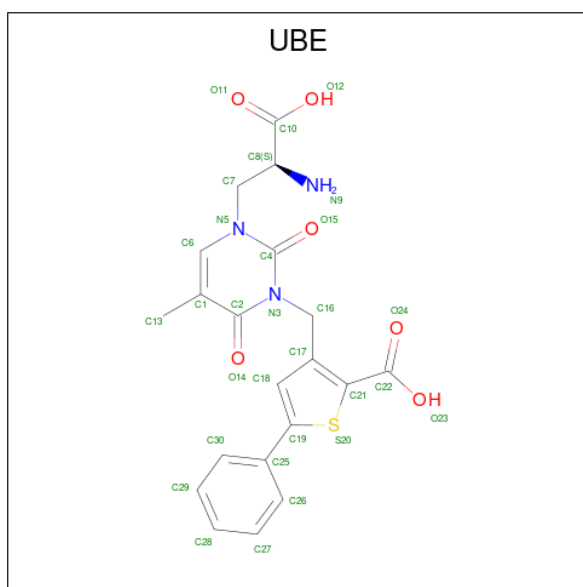
Mol	Chain	Residues	Atoms		ZeroOcc	AltConf
2	A	1	Total	Cl	0	0
			1	1		
2	B	1	Total	Cl	0	0
			1	1		

- Molecule 3 is PENTAETHYLENE GLYCOL (three-letter code: 1PE) (formula: C₁₀H₂₂O₆).



Mol	Chain	Residues	Atoms			ZeroOcc	AltConf
3	A	1	Total	C	O	0	0
			16	10	6		
3	B	1	Total	C	O	0	0
			16	10	6		

- Molecule 4 is 3-({3-[(2S)-2-amino-2-carboxyethyl]-5-methyl-2,6-dioxo-3,6-dihydropyrimidin-1(2H)-yl}methyl)-5-phenylthiophene-2-carboxylic acid (three-letter code: UBE) (formula: C₂₀H₁₉N₃O₆S).



Mol	Chain	Residues	Atoms					ZeroOcc	AltConf
4	A	1	Total	C	N	O	S	0	0
			30	20	3	6	1		

Continued on next page...

Continued from previous page...

Mol	Chain	Residues	Atoms					ZeroOcc	AltConf
			Total	C	N	O	S		
4	B	1	30	20	3	6	1	0	0

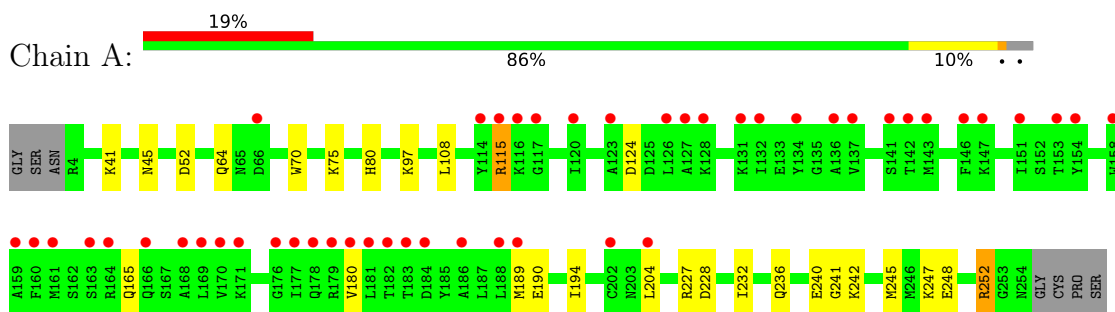
- Molecule 5 is water.

Mol	Chain	Residues	Atoms		ZeroOcc	AltConf
5	A	207	Total 207	O 207	0	0
5	B	202	Total 202	O 202	0	0

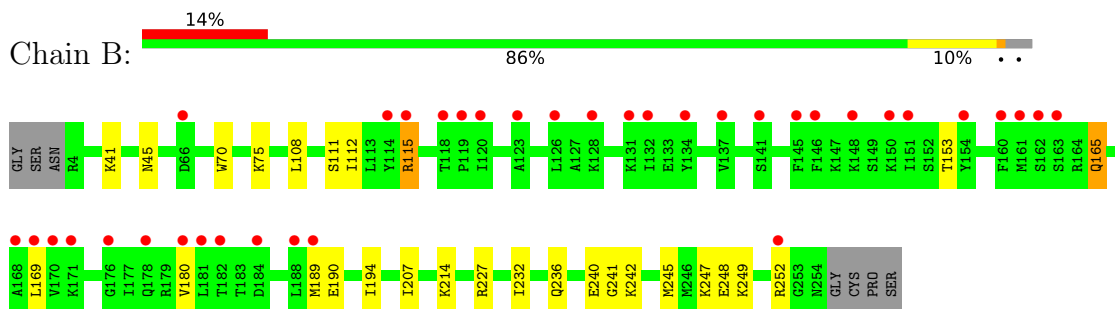
3 Residue-property plots [i](#)

These plots are drawn for all protein, RNA, DNA and oligosaccharide chains in the entry. The first graphic for a chain summarises the proportions of the various outlier classes displayed in the second graphic. The second graphic shows the sequence view annotated by issues in geometry and electron density. Residues are color-coded according to the number of geometric quality criteria for which they contain at least one outlier: green = 0, yellow = 1, orange = 2 and red = 3 or more. A red dot above a residue indicates a poor fit to the electron density ($RSRZ > 2$). Stretches of 2 or more consecutive residues without any outlier are shown as a green connector. Residues present in the sample, but not in the model, are shown in grey.

- Molecule 1: Glutamate receptor, ionotropic kainate 1



- Molecule 1: Glutamate receptor, ionotropic kainate 1



4 Data and refinement statistics i

Property	Value	Source
Space group	C 2 2 21	Depositor
Cell constants a, b, c, α , β , γ	97.77Å 97.70Å 128.60Å 90.00° 90.00° 90.00°	Depositor
Resolution (Å)	32.22 – 1.76 32.22 – 1.76	Depositor EDS
% Data completeness (in resolution range)	98.3 (32.22-1.76) 98.2 (32.22-1.76)	Depositor EDS
R_{merge}	0.04	Depositor
R_{sym}	(Not available)	Depositor
$\langle I/\sigma(I) \rangle$ ¹	3.91 (at 1.76Å)	Xtrriage
Refinement program	REFMAC 5.2.0019	Depositor
R, R_{free}	0.187 , 0.218 0.187 , 0.218	Depositor DCC
R_{free} test set	3022 reflections (5.03%)	wwPDB-VP
Wilson B-factor (Å ²)	23.5	Xtrriage
Anisotropy	0.017	Xtrriage
Bulk solvent k_{sol} (e/Å ³), B_{sol} (Å ²)	0.33 , 40.4	EDS
L-test for twinning ²	$\langle L \rangle = 0.51$, $\langle L^2 \rangle = 0.34$	Xtrriage
Estimated twinning fraction	0.487 for -k,-h,-l	Xtrriage
F_o, F_c correlation	0.96	EDS
Total number of atoms	4761	wwPDB-VP
Average B, all atoms (Å ²)	30.0	wwPDB-VP

Xtrriage's analysis on translational NCS is as follows: *The largest off-origin peak in the Patterson function is 5.27% of the height of the origin peak. No significant pseudotranslation is detected.*

¹Intensities estimated from amplitudes.

²Theoretical values of $\langle |L| \rangle$, $\langle L^2 \rangle$ for acentric reflections are 0.5, 0.333 respectively for untwinned datasets, and 0.375, 0.2 for perfectly twinned datasets.

5 Model quality [i](#)

5.1 Standard geometry [i](#)

Bond lengths and bond angles in the following residue types are not validated in this section: CL, 1PE, UBE

The Z score for a bond length (or angle) is the number of standard deviations the observed value is removed from the expected value. A bond length (or angle) with $|Z| > 5$ is considered an outlier worth inspection. RMSZ is the root-mean-square of all Z scores of the bond lengths (or angles).

Mol	Chain	Bond lengths		Bond angles	
		RMSZ	# Z >5	RMSZ	# Z >5
1	A	0.38	0/2170	0.54	0/2920
1	B	0.38	0/2164	0.53	0/2912
All	All	0.38	0/4334	0.53	0/5832

There are no bond length outliers.

There are no bond angle outliers.

There are no chirality outliers.

There are no planarity outliers.

5.2 Too-close contacts [i](#)

In the following table, the Non-H and H(model) columns list the number of non-hydrogen atoms and hydrogen atoms in the chain respectively. The H(added) column lists the number of hydrogen atoms added and optimized by MolProbity. The Clashes column lists the number of clashes within the asymmetric unit, whereas Symm-Clashes lists symmetry-related clashes.

Mol	Chain	Non-H	H(model)	H(added)	Clashes	Symm-Clashes
1	A	2132	0	2139	19	0
1	B	2126	0	2135	18	0
2	A	1	0	0	0	0
2	B	1	0	0	0	0
3	A	16	0	22	1	0
3	B	16	0	22	0	0
4	A	30	0	17	0	0
4	B	30	0	17	0	0
5	A	207	0	0	5	0
5	B	202	0	0	1	0
All	All	4761	0	4352	37	0

The all-atom clashscore is defined as the number of clashes found per 1000 atoms (including hydrogen atoms). The all-atom clashscore for this structure is 4.

All (37) close contacts within the same asymmetric unit are listed below, sorted by their clash magnitude.

Atom-1	Atom-2	Interatomic distance (Å)	Clash overlap (Å)
1:A:190[B]:GLU:OE2	5:A:802:HOH:O	1.90	0.87
1:B:190[B]:GLU:OE2	5:B:631:HOH:O	1.93	0.85
1:A:236[A]:GLN:O	1:A:240[A]:GLU:HG2	1.84	0.77
3:A:602:1PE:OH7	5:A:766:HOH:O	2.10	0.70
1:A:189:MET:HG2	1:A:194:ILE:HG13	1.74	0.70
1:B:236[A]:GLN:O	1:B:240[A]:GLU:HG2	2.00	0.61
1:A:52[B]:ASP:OD1	5:A:758:HOH:O	2.16	0.60
1:B:41:LYS:HE2	1:B:45:ASN:HD21	1.66	0.60
1:B:115:ARG:NH1	1:B:180:VAL:HG13	2.17	0.60
1:A:248[A]:GLU:O	1:A:252:ARG:HD2	2.02	0.59
1:A:240[A]:GLU:HG3	1:A:242:LYS:HG3	1.86	0.57
1:B:241:GLY:O	1:B:245[B]:MET:HG3	2.04	0.57
1:B:189:MET:HG2	1:B:194:ILE:HG13	1.88	0.55
1:B:248[A]:GLU:O	1:B:252:ARG:HG2	2.07	0.55
1:A:41:LYS:HE2	1:A:45:ASN:HD21	1.72	0.55
1:B:240[A]:GLU:HG3	1:B:242:LYS:HG3	1.90	0.54
1:A:115:ARG:NH1	1:A:180:VAL:HG13	2.24	0.53
1:A:248[B]:GLU:O	1:A:252:ARG:HD2	2.09	0.52
1:B:41:LYS:HE2	1:B:45:ASN:ND2	2.24	0.51
1:A:70:TRP:O	1:A:75[B]:LYS:HD2	2.11	0.51
1:B:70:TRP:O	1:B:75[B]:LYS:HD2	2.13	0.49
1:A:228:ASP:O	1:A:232[A]:ILE:HG12	2.15	0.46
1:A:236[B]:GLN:NE2	5:A:688:HOH:O	2.42	0.46
1:A:41:LYS:HE2	1:A:45:ASN:ND2	2.31	0.46
1:B:189:MET:HG2	1:B:194:ILE:CG1	2.46	0.45
1:A:97:LYS:HD3	5:A:681:HOH:O	2.15	0.45
1:A:189:MET:CG	1:A:194:ILE:HG13	2.45	0.44
1:A:80:HIS:HB2	1:B:249:LYS:HG3	2.00	0.43
1:B:112:ILE:HB	1:B:207:ILE:HB	1.99	0.43
1:B:189:MET:CG	1:B:194:ILE:HG13	2.48	0.43
1:B:248[B]:GLU:O	1:B:252:ARG:HG2	2.17	0.43
1:A:241:GLY:O	1:A:245[B]:MET:HG3	2.19	0.43
1:A:189:MET:HG2	1:A:194:ILE:CG1	2.47	0.42
1:B:165:GLN:HG2	1:B:169:LEU:HD12	2.01	0.42
1:B:232:ILE:O	1:B:236[B]:GLN:HG3	2.20	0.41
1:A:64[B]:GLN:HB3	1:A:70:TRP:CE2	2.55	0.41
1:B:111:SER:HB3	1:B:194:ILE:HD12	2.03	0.40

There are no symmetry-related clashes.

5.3 Torsion angles [i](#)

5.3.1 Protein backbone [i](#)

In the following table, the Percentiles column shows the percent Ramachandran outliers of the chain as a percentile score with respect to all X-ray entries followed by that with respect to entries of similar resolution.

The Analysed column shows the number of residues for which the backbone conformation was analysed, and the total number of residues.

Mol	Chain	Analysed	Favoured	Allowed	Outliers	Percentiles	
1	A	264/258 (102%)	260 (98%)	4 (2%)	0	100	100
1	B	263/258 (102%)	259 (98%)	4 (2%)	0	100	100
All	All	527/516 (102%)	519 (98%)	8 (2%)	0	100	100

There are no Ramachandran outliers to report.

5.3.2 Protein sidechains [i](#)

In the following table, the Percentiles column shows the percent sidechain outliers of the chain as a percentile score with respect to all X-ray entries followed by that with respect to entries of similar resolution.

The Analysed column shows the number of residues for which the sidechain conformation was analysed, and the total number of residues.

Mol	Chain	Analysed	Rotameric	Outliers	Percentiles	
1	A	235/225 (104%)	227 (97%)	8 (3%)	37	14
1	B	234/225 (104%)	227 (97%)	7 (3%)	41	18
All	All	469/450 (104%)	454 (97%)	15 (3%)	37	16

All (15) residues with a non-rotameric sidechain are listed below:

Mol	Chain	Res	Type
1	A	108	LEU
1	A	115	ARG
1	A	124	ASP
1	A	165	GLN
1	A	204	LEU

Continued on next page...

Continued from previous page...

Mol	Chain	Res	Type
1	A	227	ARG
1	A	247	LYS
1	A	252	ARG
1	B	108	LEU
1	B	115	ARG
1	B	153	THR
1	B	165	GLN
1	B	214	LYS
1	B	227	ARG
1	B	247	LYS

Sometimes sidechains can be flipped to improve hydrogen bonding and reduce clashes. All (5) such sidechains are listed below:

Mol	Chain	Res	Type
1	A	45	ASN
1	A	254	ASN
1	B	45	ASN
1	B	80	HIS
1	B	238	GLN

5.3.3 RNA [i](#)

There are no RNA molecules in this entry.

5.4 Non-standard residues in protein, DNA, RNA chains [i](#)

There are no non-standard protein/DNA/RNA residues in this entry.

5.5 Carbohydrates [i](#)

There are no monosaccharides in this entry.

5.6 Ligand geometry [i](#)

Of 6 ligands modelled in this entry, 2 are monoatomic - leaving 4 for Mogul analysis.

In the following table, the Counts columns list the number of bonds (or angles) for which Mogul statistics could be retrieved, the number of bonds (or angles) that are observed in the model and the number of bonds (or angles) that are defined in the Chemical Component Dictionary. The

Link column lists molecule types, if any, to which the group is linked. The Z score for a bond length (or angle) is the number of standard deviations the observed value is removed from the expected value. A bond length (or angle) with $|Z| > 2$ is considered an outlier worth inspection. RMSZ is the root-mean-square of all Z scores of the bond lengths (or angles).

Mol	Type	Chain	Res	Link	Bond lengths			Bond angles		
					Counts	RMSZ	# Z > 2	Counts	RMSZ	# Z > 2
3	1PE	A	602	-	15,15,15	0.46	0	14,14,14	0.31	0
4	UBE	B	602	-	25,32,32	1.35	3 (12%)	30,46,46	1.48	5 (16%)
4	UBE	A	603	-	25,32,32	1.38	3 (12%)	30,46,46	1.56	5 (16%)
3	1PE	B	601	-	15,15,15	0.50	0	14,14,14	0.24	0

In the following table, the Chirals column lists the number of chiral outliers, the number of chiral centers analysed, the number of these observed in the model and the number defined in the Chemical Component Dictionary. Similar counts are reported in the Torsion and Rings columns. '2' means no outliers of that kind were identified.

Mol	Type	Chain	Res	Link	Chirals	Torsions	Rings
3	1PE	A	602	-	-	3/13/13/13	-
4	UBE	B	602	-	-	1/12/20/20	0/3/3/3
4	UBE	A	603	-	-	1/12/20/20	0/3/3/3
3	1PE	B	601	-	-	2/13/13/13	-

All (6) bond length outliers are listed below:

Mol	Chain	Res	Type	Atoms	Z	Observed(Å)	Ideal(Å)
4	A	603	UBE	C6-C1	2.89	1.39	1.34
4	B	602	UBE	C6-C1	2.87	1.39	1.34
4	A	603	UBE	C4-N5	2.41	1.42	1.38
4	B	602	UBE	C4-N5	2.31	1.42	1.38
4	A	603	UBE	C2-C1	2.12	1.48	1.44
4	B	602	UBE	C2-C1	2.00	1.48	1.44

All (10) bond angle outliers are listed below:

Mol	Chain	Res	Type	Atoms	Z	Observed(°)	Ideal(°)
4	A	603	UBE	C2-N3-C4	-4.14	120.23	125.46
4	B	602	UBE	C16-N3-C4	4.04	122.79	116.97
4	A	603	UBE	C16-N3-C4	4.02	122.76	116.97
4	B	602	UBE	C2-N3-C4	-3.98	120.43	125.46
4	A	603	UBE	N5-C4-N3	3.11	119.42	115.57
4	B	602	UBE	N5-C4-N3	2.97	119.25	115.57
4	A	603	UBE	C30-C25-C26	2.58	120.94	118.65

Continued on next page...

Continued from previous page...

Mol	Chain	Res	Type	Atoms	Z	Observed(°)	Ideal(°)
4	B	602	UBE	C30-C25-C26	2.28	120.68	118.65
4	A	603	UBE	O15-C4-N5	-2.13	119.37	122.42
4	B	602	UBE	O15-C4-N5	-2.00	119.55	122.42

There are no chirality outliers.

All (7) torsion outliers are listed below:

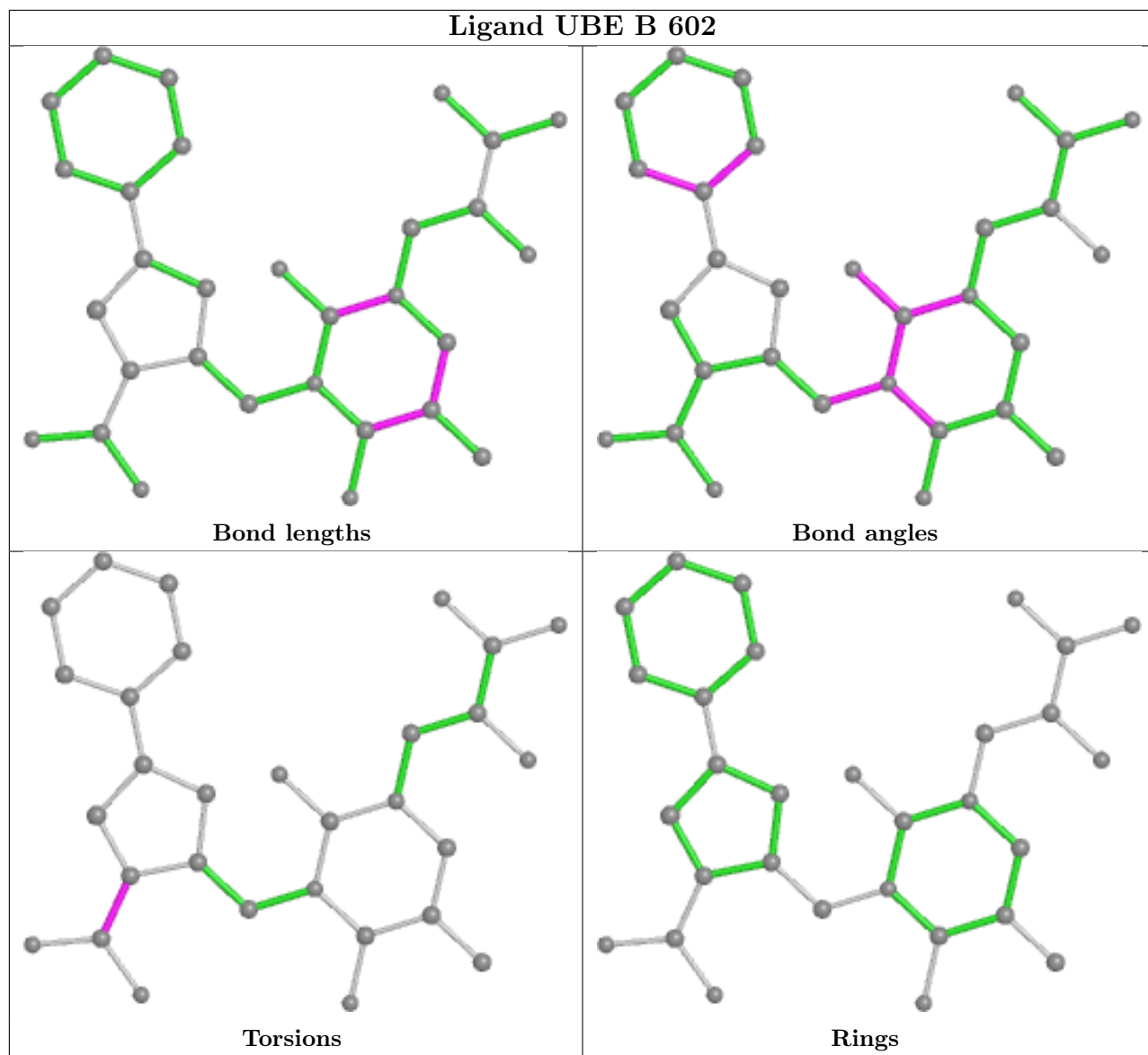
Mol	Chain	Res	Type	Atoms
4	A	603	UBE	C17-C21-C22-O24
4	B	602	UBE	C17-C21-C22-O24
3	B	601	1PE	OH7-C16-C26-OH6
3	A	602	1PE	OH6-C15-C25-OH5
3	A	602	1PE	C12-C22-OH3-C23
3	B	601	1PE	C16-C26-OH6-C15
3	A	602	1PE	OH4-C13-C23-OH3

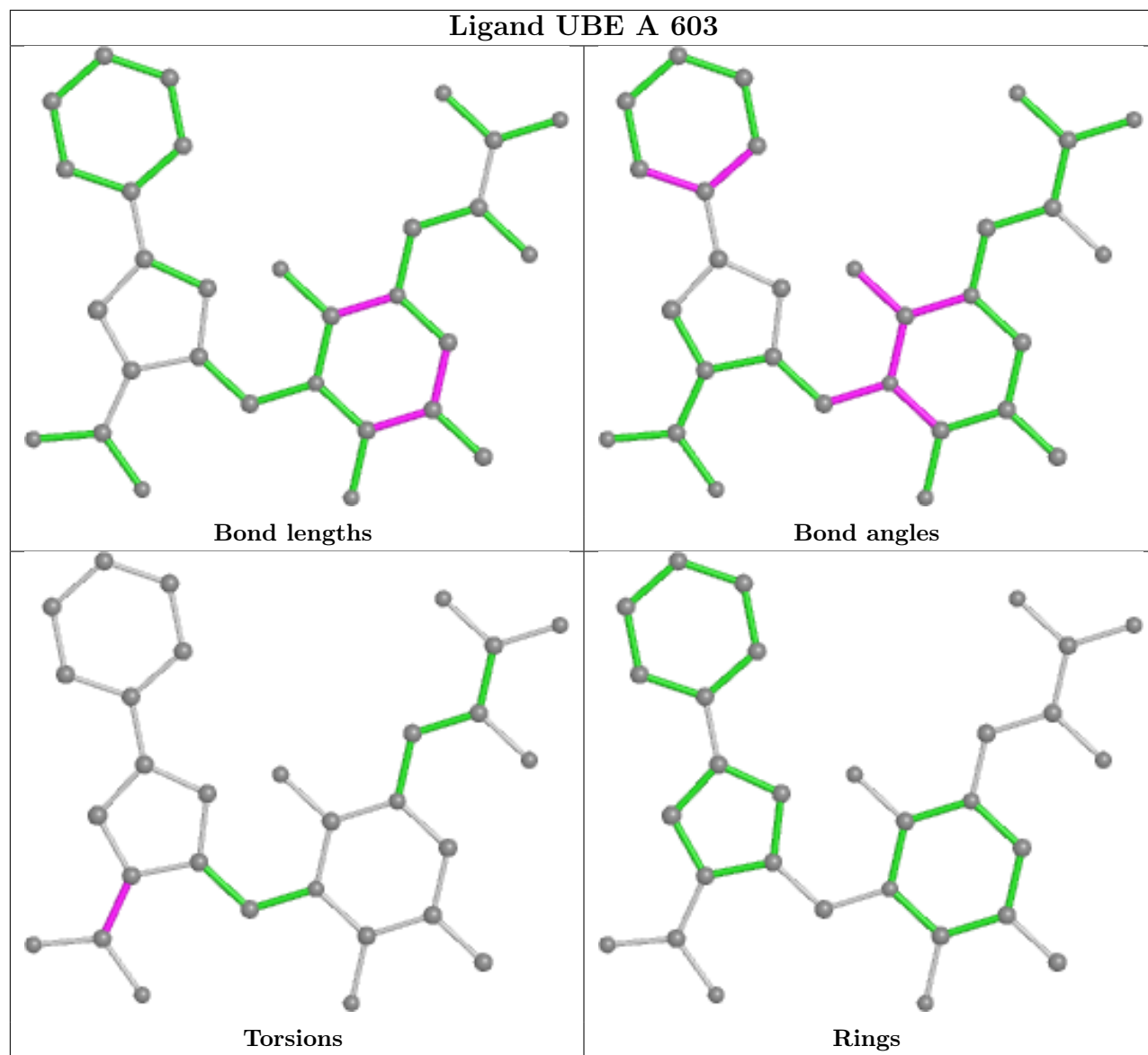
There are no ring outliers.

1 monomer is involved in 1 short contact:

Mol	Chain	Res	Type	Clashes	Symm-Clashes
3	A	602	1PE	1	0

The following is a two-dimensional graphical depiction of Mogul quality analysis of bond lengths, bond angles, torsion angles, and ring geometry for all instances of the Ligand of Interest. In addition, ligands with molecular weight > 250 and outliers as shown on the validation Tables will also be included. For torsion angles, if less than 5% of the Mogul distribution of torsion angles is within 10 degrees of the torsion angle in question, then that torsion angle is considered an outlier. Any bond that is central to one or more torsion angles identified as an outlier by Mogul will be highlighted in the graph. For rings, the root-mean-square deviation (RMSD) between the ring in question and similar rings identified by Mogul is calculated over all ring torsion angles. If the average RMSD is greater than 60 degrees and the minimal RMSD between the ring in question and any Mogul-identified rings is also greater than 60 degrees, then that ring is considered an outlier. The outliers are highlighted in purple. The color gray indicates Mogul did not find sufficient equivalents in the CSD to analyse the geometry.





5.7 Other polymers [i](#)

There are no such residues in this entry.

5.8 Polymer linkage issues [i](#)

There are no chain breaks in this entry.

6 Fit of model and data

6.1 Protein, DNA and RNA chains

In the following table, the column labelled ‘#RSRZ> 2’ contains the number (and percentage) of RSRZ outliers, followed by percent RSRZ outliers for the chain as percentile scores relative to all X-ray entries and entries of similar resolution. The OWAB column contains the minimum, median, 95th percentile and maximum values of the occupancy-weighted average B-factor per residue. The column labelled ‘Q< 0.9’ lists the number of (and percentage) of residues with an average occupancy less than 0.9.

Mol	Chain	Analysed	<RSRZ>	#RSRZ>2	OWAB(Å ²)	Q<0.9
1	A	251/258 (97%)	0.72	48 (19%) 1 1	10, 23, 63, 68	0
1	B	251/258 (97%)	0.62	37 (14%) 2 3	9, 24, 56, 58	0
All	All	502/516 (97%)	0.67	85 (16%) 1 2	9, 24, 59, 68	0

All (85) RSRZ outliers are listed below:

Mol	Chain	Res	Type	RSRZ
1	B	168	ALA	6.1
1	A	160	PHE	5.9
1	A	168	ALA	5.6
1	A	184	ASP	5.3
1	A	114	TYR	5.2
1	A	180	VAL	5.2
1	B	115	ARG	5.0
1	B	114	TYR	4.8
1	A	115	ARG	4.8
1	A	117	GLY	4.5
1	B	160	PHE	4.5
1	B	163	SER	4.4
1	A	131	LYS	4.4
1	A	178	GLN	4.2
1	A	166	GLN	4.1
1	A	146	PHE	4.0
1	A	177	ILE	3.7
1	A	181	LEU	3.7
1	B	132	ILE	3.6
1	B	181	LEU	3.6
1	A	202	CYS	3.5
1	A	128	LYS	3.5
1	A	134	TYR	3.5
1	A	126	LEU	3.4

Continued on next page...

Continued from previous page...

Mol	Chain	Res	Type	RSRZ
1	A	151	ILE	3.4
1	A	163	SER	3.4
1	A	132	ILE	3.3
1	B	137	VAL	3.2
1	B	162	SER	3.1
1	A	137	VAL	3.1
1	B	131	LYS	3.0
1	A	169	LEU	3.0
1	A	66	ASP	3.0
1	B	176	GLY	2.9
1	A	120	ILE	2.9
1	B	161	MET	2.8
1	B	170	VAL	2.8
1	B	180	VAL	2.8
1	A	164	ARG	2.8
1	B	154	TYR	2.8
1	A	176	GLY	2.7
1	A	127	ALA	2.7
1	B	146	PHE	2.7
1	A	123	ALA	2.7
1	B	66	ASP	2.7
1	A	141	SER	2.7
1	B	178	GLN	2.6
1	B	134	TYR	2.6
1	B	252	ARG	2.6
1	B	148	LYS	2.6
1	A	186	ALA	2.5
1	A	161	MET	2.5
1	B	126	LEU	2.5
1	A	154	TYR	2.5
1	B	150	LYS	2.5
1	A	153	THR	2.5
1	B	184	ASP	2.5
1	B	151	ILE	2.5
1	B	141	SER	2.4
1	A	158	TRP	2.4
1	B	189	MET	2.4
1	B	118	THR	2.4
1	B	123	ALA	2.4
1	B	169	LEU	2.3
1	A	159	ALA	2.3
1	A	204	LEU	2.3

Continued on next page...

Continued from previous page...

Mol	Chain	Res	Type	RSRZ
1	B	119	PRO	2.3
1	A	182	THR	2.3
1	B	188	LEU	2.2
1	B	120	ILE	2.2
1	A	143	MET	2.2
1	A	183	THR	2.2
1	A	170	VAL	2.1
1	A	188	LEU	2.1
1	A	142	THR	2.1
1	A	179	ARG	2.1
1	A	136	ALA	2.1
1	B	145	PHE	2.1
1	B	128	LYS	2.1
1	A	189	MET	2.1
1	B	182	THR	2.1
1	A	116	LYS	2.1
1	A	171	LYS	2.1
1	A	147	LYS	2.0
1	B	171	LYS	2.0

6.2 Non-standard residues in protein, DNA, RNA chains [i](#)

There are no non-standard protein/DNA/RNA residues in this entry.

6.3 Carbohydrates [i](#)

There are no monosaccharides in this entry.

6.4 Ligands [i](#)

In the following table, the Atoms column lists the number of modelled atoms in the group and the number defined in the chemical component dictionary. The B-factors column lists the minimum, median, 95th percentile and maximum values of B factors of atoms in the group. The column labelled 'Q< 0.9' lists the number of atoms with occupancy less than 0.9.

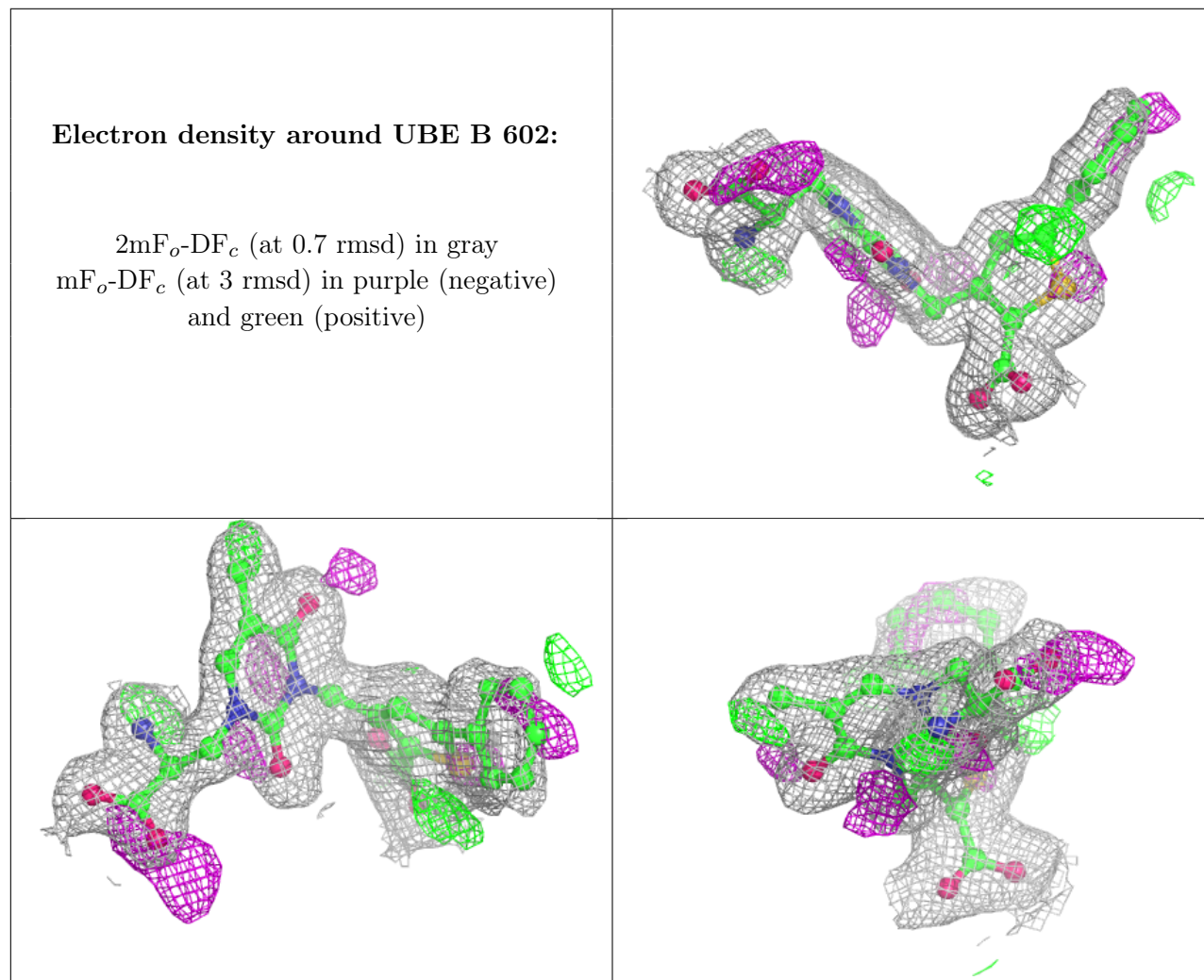
Mol	Type	Chain	Res	Atoms	RSCC	RSR	B-factors(Å ²)	Q<0.9
4	UBE	B	602	30/30	0.87	0.12	26,31,41,41	0
4	UBE	A	603	30/30	0.89	0.12	26,32,41,41	0
3	1PE	B	601	16/16	0.96	0.08	18,21,26,27	16
3	1PE	A	602	16/16	0.97	0.09	16,20,26,27	16

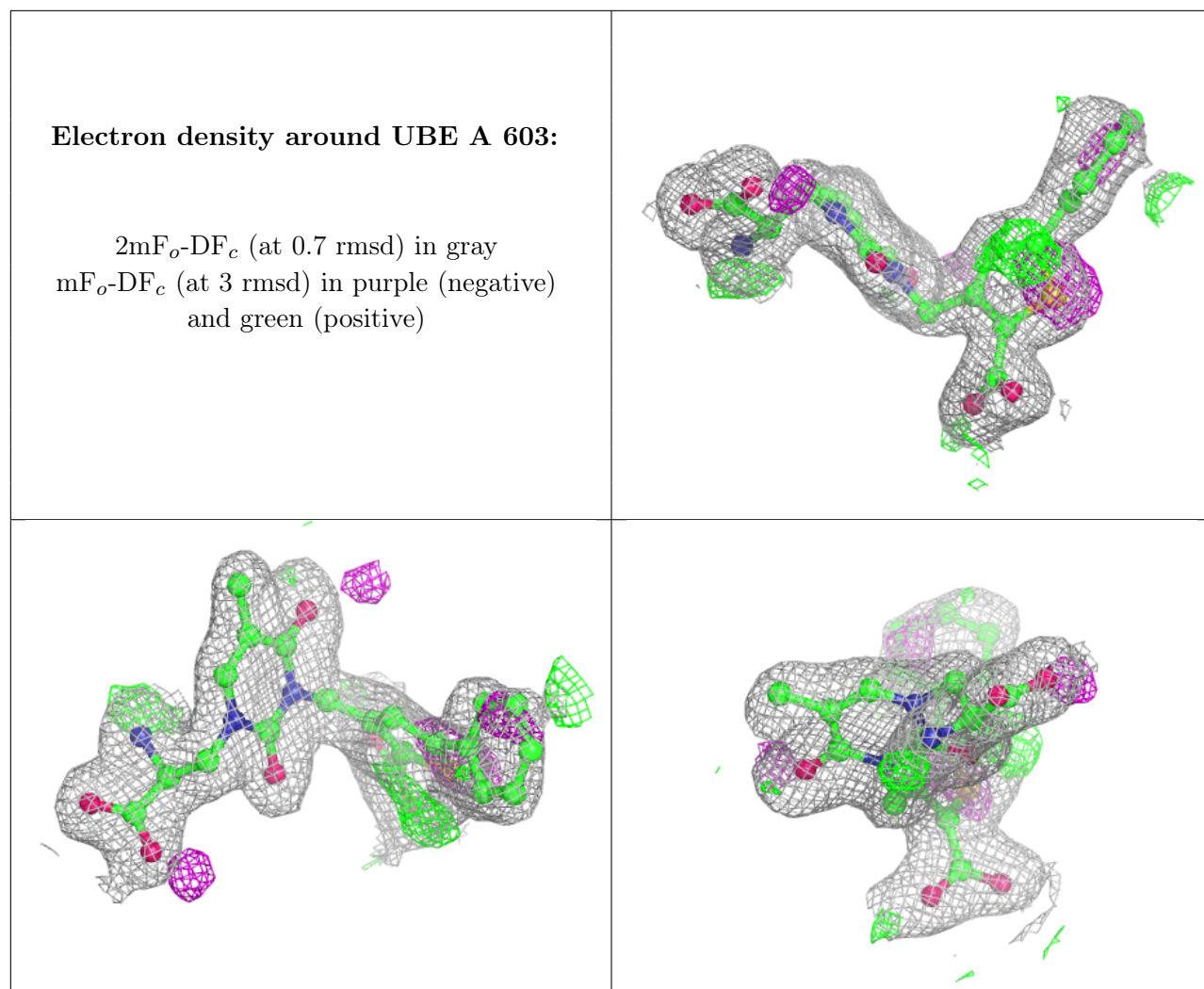
Continued on next page...

Continued from previous page...

Mol	Type	Chain	Res	Atoms	RSCC	RSR	B-factors(\AA^2)	Q<0.9
2	CL	A	501	1/1	0.99	0.04	21,21,21,21	1
2	CL	B	502	1/1	1.00	0.02	20,20,20,20	1

The following is a graphical depiction of the model fit to experimental electron density of all instances of the Ligand of Interest. In addition, ligands with molecular weight > 250 and outliers as shown on the geometry validation Tables will also be included. Each fit is shown from different orientation to approximate a three-dimensional view.





6.5 Other polymers [i](#)

There are no such residues in this entry.