



# wwPDB X-ray Structure Validation Summary Report ⓘ

Jun 23, 2024 – 04:16 AM EDT

PDB ID : 6QTP  
Title : 2.37Å structure of gepotidacin with S.aureus DNA gyrase and uncleaved DNA  
Authors : Bax, B.D.  
Deposited on : 2019-02-25  
Resolution : 2.37 Å(reported)

This is a wwPDB X-ray Structure Validation Summary Report for a publicly released PDB entry.

We welcome your comments at [validation@mail.wwpdb.org](mailto:validation@mail.wwpdb.org)

A user guide is available at

<https://www.wwpdb.org/validation/2017/XrayValidationReportHelp>

with specific help available everywhere you see the ⓘ symbol.

The types of validation reports are described at

<http://www.wwpdb.org/validation/2017/FAQs#types>.

---

The following versions of software and data (see [references ⓘ](#)) were used in the production of this report:

MolProbity : 4.02b-467  
Mogul : 2022.3.0, CSD as543be (2022)  
Xtriage (Phenix) : 1.20.1  
EDS : 2.37.1  
buster-report : 1.1.7 (2018)  
Percentile statistics : 20191225.v01 (using entries in the PDB archive December 25th 2019)  
Refmac : 5.8.0158  
CCP4 : 7.0.044 (Gargrove)  
Ideal geometry (proteins) : Engh & Huber (2001)  
Ideal geometry (DNA, RNA) : Parkinson et al. (1996)  
Validation Pipeline (wwPDB-VP) : 2.37.1

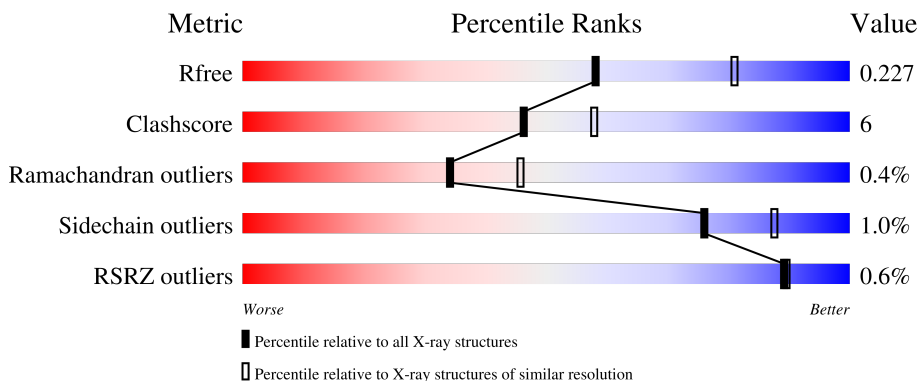
# 1 Overall quality at a glance

The following experimental techniques were used to determine the structure:

*X-RAY DIFFRACTION*

The reported resolution of this entry is 2.37 Å.

Percentile scores (ranging between 0-100) for global validation metrics of the entry are shown in the following graphic. The table shows the number of entries on which the scores are based.




Metric	Whole archive (#Entries)	Similar resolution (#Entries, resolution range(Å))
$R_{free}$	130704	5509 (2.40-2.36)
Clashscore	141614	6082 (2.40-2.36)
Ramachandran outliers	138981	5973 (2.40-2.36)
Sidechain outliers	138945	5975 (2.40-2.36)
RSRZ outliers	127900	5397 (2.40-2.36)

The table below summarises the geometric issues observed across the polymeric chains and their fit to the electron density. The red, orange, yellow and green segments of the lower bar indicate the fraction of residues that contain outliers for  $\geq 3$ , 2, 1 and 0 types of geometric quality criteria respectively. A grey segment represents the fraction of residues that are not modelled. The numeric value for each fraction is indicated below the corresponding segment, with a dot representing fractions  $\leq 5\%$ . The upper red bar (where present) indicates the fraction of residues that have poor fit to the electron density. The numeric value is given above the bar.

Mol	Chain	Length	Quality of chain
1	B	202	82% 11% 6%
1	D	202	81% 13% 6%
2	A	490	81% 15% .
2	C	490	89% 9% .
3	E	20	60% 40%

*Continued on next page...*

*Continued from previous page...*

Mol	Chain	Length	Quality of chain
3	F	20	 60% 40%

## 2 Entry composition [i](#)

There are 9 unique types of molecules in this entry. The entry contains 12267 atoms, of which 0 are hydrogens and 0 are deuteriums.

In the tables below, the ZeroOcc column contains the number of atoms modelled with zero occupancy, the AltConf column contains the number of residues with at least one atom in alternate conformation and the Trace column contains the number of residues modelled with at most 2 atoms.

- Molecule 1 is a protein called DNA gyrase subunit B,DNA gyrase subunit B.

Mol	Chain	Residues	Atoms					ZeroOcc	AltConf	Trace
			Total	C	N	O	S			
1	B	189	Total	C	N	O	S	0	12	0
			1533	958	263	301	11			
1	D	190	Total	C	N	O	S	0	3	0
			1480	929	250	292	9			

There are 6 discrepancies between the modelled and reference sequences:

Chain	Residue	Modelled	Actual	Comment	Reference
B	409	MET	-	initiating methionine	UNP P66937
B	578	THR	-	linker	UNP P66937
B	579	GLY	-	linker	UNP P66937
D	409	MET	-	initiating methionine	UNP P66937
D	544	THR	-	linker	UNP P66937
D	545	GLY	-	linker	UNP P66937

- Molecule 2 is a protein called DNA gyrase subunit A.

Mol	Chain	Residues	Atoms					ZeroOcc	AltConf	Trace
			Total	C	N	O	S			
2	A	473	Total	C	N	O	S	0	21	0
			3842	2392	686	746	18			
2	C	481	Total	C	N	O	S	0	13	0
			3844	2392	694	739	19			

- Molecule 3 is a DNA chain called DNA (5'-D(\*GP\*AP\*GP\*CP\*GP\*TP\*AP\*CP\*AP\*GP\*CP\*TP\*GP\*TP\*AP\*CP\*GP\*CP\*TP\*T)-3').

Mol	Chain	Residues	Atoms					ZeroOcc	AltConf	Trace
			Total	C	N	O	P			
3	E	20	Total	C	N	O	P	0	5	0
			480	227	90	140	23			
3	F	20	Total	C	N	O	P	0	0	0
			392	185	73	115	19			

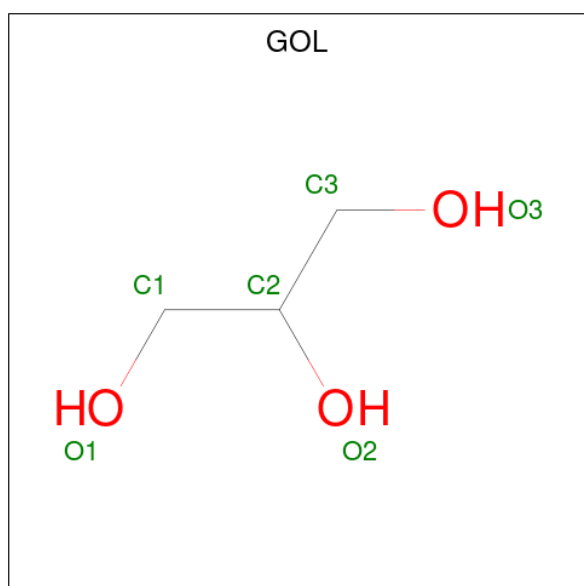
- Molecule 4 is MANGANESE (II) ION (three-letter code: MN) (formula: Mn).

Mol	Chain	Residues	Atoms		ZeroOcc	AltConf
4	B	1	Total	Mn	0	1
			2	2		
4	D	1	Total	Mn	0	1
			1	1		

- Molecule 5 is SODIUM ION (three-letter code: NA) (formula: Na).

Mol	Chain	Residues	Atoms		ZeroOcc	AltConf
5	B	1	Total	Na	0	0
			1	1		

- Molecule 6 is GLYCEROL (three-letter code: GOL) (formula: C<sub>3</sub>H<sub>8</sub>O<sub>3</sub>).



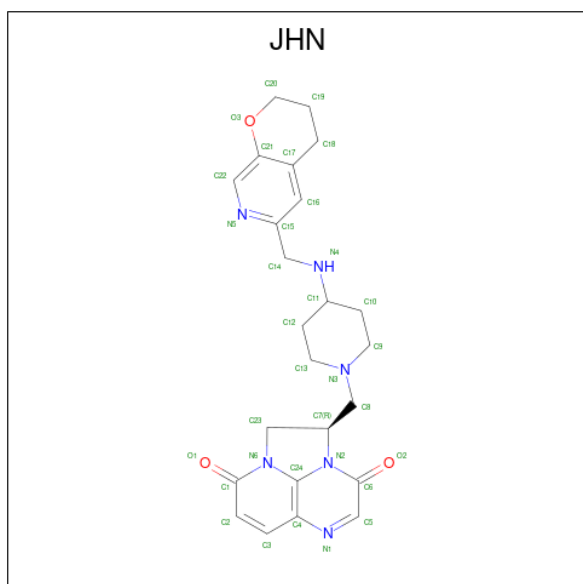
Mol	Chain	Residues	Atoms			ZeroOcc	AltConf
6	A	1	Total	C	O	0	0
			6	3	3		

- Molecule 7 is SULFATE ION (three-letter code: SO4) (formula: O<sub>4</sub>S).



Mol	Chain	Residues	Atoms			ZeroOcc	AltConf
7	C	1	Total	O	S	0	1
			10	8	2		

- Molecule 8 is (3 {R})-3-[[4-(3,4-dihydro-2 {H}-pyrano[2,3-c]pyridin-6-ylmethylamino) piperidin-1-yl]methyl]-1,4,7-triazatricyclo[6.3.1.0<sup>4,12</sup>]dodeca-6,8(12),9-triene-5,11-dione (three-letter code: JHN) (formula: C<sub>24</sub>H<sub>28</sub>N<sub>6</sub>O<sub>3</sub>) (labeled as "Ligand of Interest" by depositor).



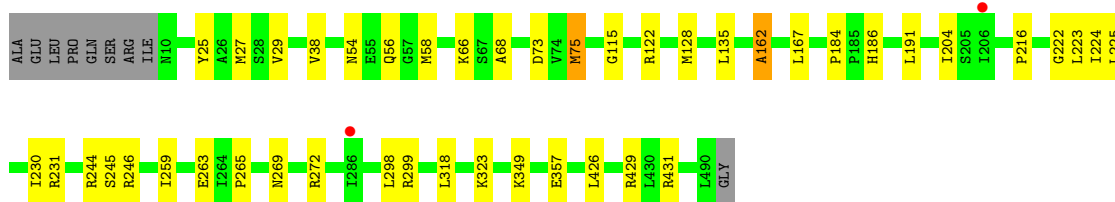
Mol	Chain	Residues	Atoms				ZeroOcc	AltConf
8	E	1	Total	C	N	O	0	1
			66	48	12	6		

- Molecule 9 is water.

<b>Mol</b>	<b>Chain</b>	<b>Residues</b>	<b>Atoms</b>		<b>ZeroOcc</b>	<b>AltConf</b>
9	B	55	Total 58	O 58	0	6
9	A	201	Total 203	O 203	0	2
9	D	54	Total 55	O 55	0	1
9	C	223	Total 224	O 224	0	1
9	E	38	Total 39	O 39	0	2
9	F	31	Total 31	O 31	0	0







● Molecule 3: DNA (5'-D(\*GP\*AP\*GP\*CP\*GP\*TP\*AP\*CP\*AP\*GP\*CP\*TP\*GP\*TP\*AP\*CP\*GP\*CP\*TP\*T)-3')



● Molecule 3: DNA (5'-D(\*GP\*AP\*GP\*CP\*GP\*TP\*AP\*CP\*AP\*GP\*CP\*TP\*GP\*TP\*AP\*CP\*GP\*CP\*TP\*T)-3')



## 4 Data and refinement statistics

Property	Value	Source
Space group	P 1 21 1	Depositor
Cell constants a, b, c, $\alpha$ , $\beta$ , $\gamma$	86.34Å 123.65Å 94.10Å 90.00° 117.10° 90.00°	Depositor
Resolution (Å)	49.74 – 2.37 49.74 – 2.37	Depositor EDS
% Data completeness (in resolution range)	98.2 (49.74-2.37) 98.2 (49.74-2.37)	Depositor EDS
$R_{merge}$	(Not available)	Depositor
$R_{sym}$	(Not available)	Depositor
$\langle I/\sigma(I) \rangle$ <sup>1</sup>	1.03 (at 2.37Å)	Xtriage
Refinement program	REFMAC 5.8.0238	Depositor
R, $R_{free}$	0.183 , 0.224 0.184 , 0.227	Depositor DCC
$R_{free}$ test set	3547 reflections (5.05%)	wwPDB-VP
Wilson B-factor (Å <sup>2</sup> )	48.6	Xtriage
Anisotropy	0.495	Xtriage
Bulk solvent $k_{sol}$ (e/Å <sup>3</sup> ), $B_{sol}$ (Å <sup>2</sup> )	0.28 , 20.2	EDS
L-test for twinning <sup>2</sup>	$\langle  L  \rangle = 0.44$ , $\langle L^2 \rangle = 0.26$	Xtriage
Estimated twinning fraction	0.419 for h,-k,-h-l	Xtriage
Reported twinning fraction	0.584 for H, K, L 0.416 for H, -K, -H-L	Depositor
Outliers	0 of 70281 reflections	Xtriage
$F_o, F_c$ correlation	0.96	EDS
Total number of atoms	12267	wwPDB-VP
Average B, all atoms (Å <sup>2</sup> )	53.0	wwPDB-VP

Xtriage's analysis on translational NCS is as follows: *The largest off-origin peak in the Patterson function is 7.64% of the height of the origin peak. No significant pseudotranslation is detected.*

<sup>1</sup>Intensities estimated from amplitudes.

<sup>2</sup>Theoretical values of  $\langle |L| \rangle$ ,  $\langle L^2 \rangle$  for acentric reflections are 0.5, 0.333 respectively for untwinned datasets, and 0.375, 0.2 for perfectly twinned datasets.

## 5 Model quality

### 5.1 Standard geometry

Bond lengths and bond angles in the following residue types are not validated in this section: MN, NA, SO4, JHN, GOL

The Z score for a bond length (or angle) is the number of standard deviations the observed value is removed from the expected value. A bond length (or angle) with  $|Z| > 5$  is considered an outlier worth inspection. RMSZ is the root-mean-square of all Z scores of the bond lengths (or angles).

Mol	Chain	Bond lengths		Bond angles	
		RMSZ	# Z  >5	RMSZ	# Z  >5
1	B	0.26	0/1556	0.52	0/2106
1	D	0.25	0/1504	0.50	0/2038
2	A	0.25	0/3895	0.52	0/5260
2	C	0.25	0/3898	0.51	0/5263
3	E	0.31	0/537	0.74	0/827
3	F	0.33	0/439	0.79	0/677
All	All	0.26	0/11829	0.54	0/16171

Chiral center outliers are detected by calculating the chiral volume of a chiral center and verifying if the center is modelled as a planar moiety or with the opposite hand. A planarity outlier is detected by checking planarity of atoms in a peptide group, atoms in a mainchain group or atoms of a sidechain that are expected to be planar.

Mol	Chain	#Chirality outliers	#Planarity outliers
1	B	0	2

There are no bond length outliers.

There are no bond angle outliers.

There are no chirality outliers.

All (2) planarity outliers are listed below:

Mol	Chain	Res	Type	Group
1	B	508[A]	ASP	Peptide
1	B	508[B]	ASP	Peptide

## 5.2 Too-close contacts [i](#)

In the following table, the Non-H and H(model) columns list the number of non-hydrogen atoms and hydrogen atoms in the chain respectively. The H(added) column lists the number of hydrogen atoms added and optimized by MolProbity. The Clashes column lists the number of clashes within the asymmetric unit, whereas Symm-Clashes lists symmetry-related clashes.

Mol	Chain	Non-H	H(model)	H(added)	Clashes	Symm-Clashes
1	B	1533	0	1449	27	0
1	D	1480	0	1402	18	0
2	A	3842	0	3766	58	0
2	C	3844	0	3796	36	0
3	E	480	0	260	12	0
3	F	392	0	214	9	0
4	B	2	0	0	0	0
4	D	1	0	0	0	0
5	B	1	0	0	0	0
6	A	6	0	8	1	0
7	C	10	0	0	0	0
8	E	66	0	0	4	0
9	A	203	0	0	1	0
9	B	58	0	0	2	0
9	C	224	0	0	2	0
9	D	55	0	0	0	0
9	E	39	0	0	2	0
9	F	31	0	0	0	0
All	All	12267	0	10895	142	0

The all-atom clashscore is defined as the number of clashes found per 1000 atoms (including hydrogen atoms). The all-atom clashscore for this structure is 6.

The worst 5 of 142 close contacts within the same asymmetric unit are listed below, sorted by their clash magnitude.

Atom-1	Atom-2	Interatomic distance (Å)	Clash overlap (Å)
1:B:458[B]:ARG:HH11	1:B:458[B]:ARG:HB3	1.06	1.20
8:E:101[B]:JHN:N4	9:E:235[B]:HOH:O	1.81	1.12
1:B:507[A]:THR:O	1:B:508[A]:ASP:O	1.72	1.08
1:B:458[B]:ARG:HH11	1:B:458[B]:ARG:CB	1.71	1.03
2:C:27[A]:MET:HE2	2:C:27[A]:MET:HA	1.46	0.97

There are no symmetry-related clashes.

## 5.3 Torsion angles [i](#)

### 5.3.1 Protein backbone [i](#)

In the following table, the Percentiles column shows the percent Ramachandran outliers of the chain as a percentile score with respect to all X-ray entries followed by that with respect to entries of similar resolution.

The Analysed column shows the number of residues for which the backbone conformation was analysed, and the total number of residues.

Mol	Chain	Analysed	Favoured	Allowed	Outliers	Percentiles	
1	B	196/202 (97%)	190 (97%)	3 (2%)	3 (2%)	10	12
1	D	191/202 (95%)	185 (97%)	6 (3%)	0	100	100
2	A	488/490 (100%)	473 (97%)	12 (2%)	3 (1%)	25	34
2	C	493/490 (101%)	485 (98%)	7 (1%)	1 (0%)	47	61
All	All	1368/1384 (99%)	1333 (97%)	28 (2%)	7 (0%)	34	39

5 of 7 Ramachandran outliers are listed below:

Mol	Chain	Res	Type
1	B	509[A]	ALA
1	B	509[B]	ALA
1	B	581	LYS
2	A	120[A]	ALA
2	A	120[B]	ALA

### 5.3.2 Protein sidechains [i](#)

In the following table, the Percentiles column shows the percent sidechain outliers of the chain as a percentile score with respect to all X-ray entries followed by that with respect to entries of similar resolution.

The Analysed column shows the number of residues for which the sidechain conformation was analysed, and the total number of residues.

Mol	Chain	Analysed	Rotameric	Outliers	Percentiles	
1	B	156/168 (93%)	155 (99%)	1 (1%)	86	93
1	D	150/168 (89%)	144 (96%)	6 (4%)	31	47
2	A	402/423 (95%)	401 (100%)	1 (0%)	93	97
2	C	402/423 (95%)	399 (99%)	3 (1%)	84	92
All	All	1110/1182 (94%)	1099 (99%)	11 (1%)	76	87

5 of 11 residues with a non-rotameric sidechain are listed below:

Mol	Chain	Res	Type
1	D	616	GLN
2	C	75	MET
2	C	357	GLU
2	C	299	ARG
1	D	489	ILE

Sometimes sidechains can be flipped to improve hydrogen bonding and reduce clashes. All (4) such sidechains are listed below:

Mol	Chain	Res	Type
2	A	340	ASN
1	D	501	HIS
2	C	10	ASN
2	C	354	HIS

### 5.3.3 RNA [i](#)

There are no RNA molecules in this entry.

## 5.4 Non-standard residues in protein, DNA, RNA chains [i](#)

There are no non-standard protein/DNA/RNA residues in this entry.

## 5.5 Carbohydrates [i](#)

There are no monosaccharides in this entry.

## 5.6 Ligand geometry [i](#)

Of 9 ligands modelled in this entry, 4 are monoatomic - leaving 5 for Mogul analysis.

In the following table, the Counts columns list the number of bonds (or angles) for which Mogul statistics could be retrieved, the number of bonds (or angles) that are observed in the model and the number of bonds (or angles) that are defined in the Chemical Component Dictionary. The Link column lists molecule types, if any, to which the group is linked. The Z score for a bond length (or angle) is the number of standard deviations the observed value is removed from the expected value. A bond length (or angle) with  $|Z| > 2$  is considered an outlier worth inspection. RMSZ is the root-mean-square of all Z scores of the bond lengths (or angles).

Mol	Type	Chain	Res	Link	Bond lengths			Bond angles		
					Counts	RMSZ	# Z  > 2	Counts	RMSZ	# Z  > 2
8	JHN	E	101[A]	-	37,38,38	0.96	2 (5%)	38,55,55	1.07	2 (5%)
6	GOL	A	501	-	5,5,5	0.08	0	5,5,5	0.33	0
8	JHN	E	101[B]	-	37,38,38	0.95	2 (5%)	38,55,55	0.94	1 (2%)
7	SO4	C	501[A]	-	4,4,4	0.34	0	6,6,6	0.08	0
7	SO4	C	501[B]	-	4,4,4	0.34	0	6,6,6	0.08	0

In the following table, the Chirals column lists the number of chiral outliers, the number of chiral centers analysed, the number of these observed in the model and the number defined in the Chemical Component Dictionary. Similar counts are reported in the Torsion and Rings columns. '-' means no outliers of that kind were identified.

Mol	Type	Chain	Res	Link	Chirals	Torsions	Rings
8	JHN	E	101[A]	-	-	0/9/34/34	0/6/6/6
6	GOL	A	501	-	-	2/4/4/4	-
8	JHN	E	101[B]	-	-	3/9/34/34	0/6/6/6

All (4) bond length outliers are listed below:

Mol	Chain	Res	Type	Atoms	Z	Observed(Å)	Ideal(Å)
8	E	101[B]	JHN	C4-C24	-4.14	1.36	1.43
8	E	101[A]	JHN	C4-C24	-4.09	1.36	1.43
8	E	101[A]	JHN	C24-N6	-2.10	1.34	1.37
8	E	101[B]	JHN	C24-N6	-2.08	1.34	1.37

All (3) bond angle outliers are listed below:

Mol	Chain	Res	Type	Atoms	Z	Observed(°)	Ideal(°)
8	E	101[A]	JHN	C18-C19-C20	3.30	116.42	110.06
8	E	101[A]	JHN	C6-C5-N1	-3.08	123.16	125.62
8	E	101[B]	JHN	C6-C5-N1	-3.08	123.16	125.62

There are no chirality outliers.

All (5) torsion outliers are listed below:

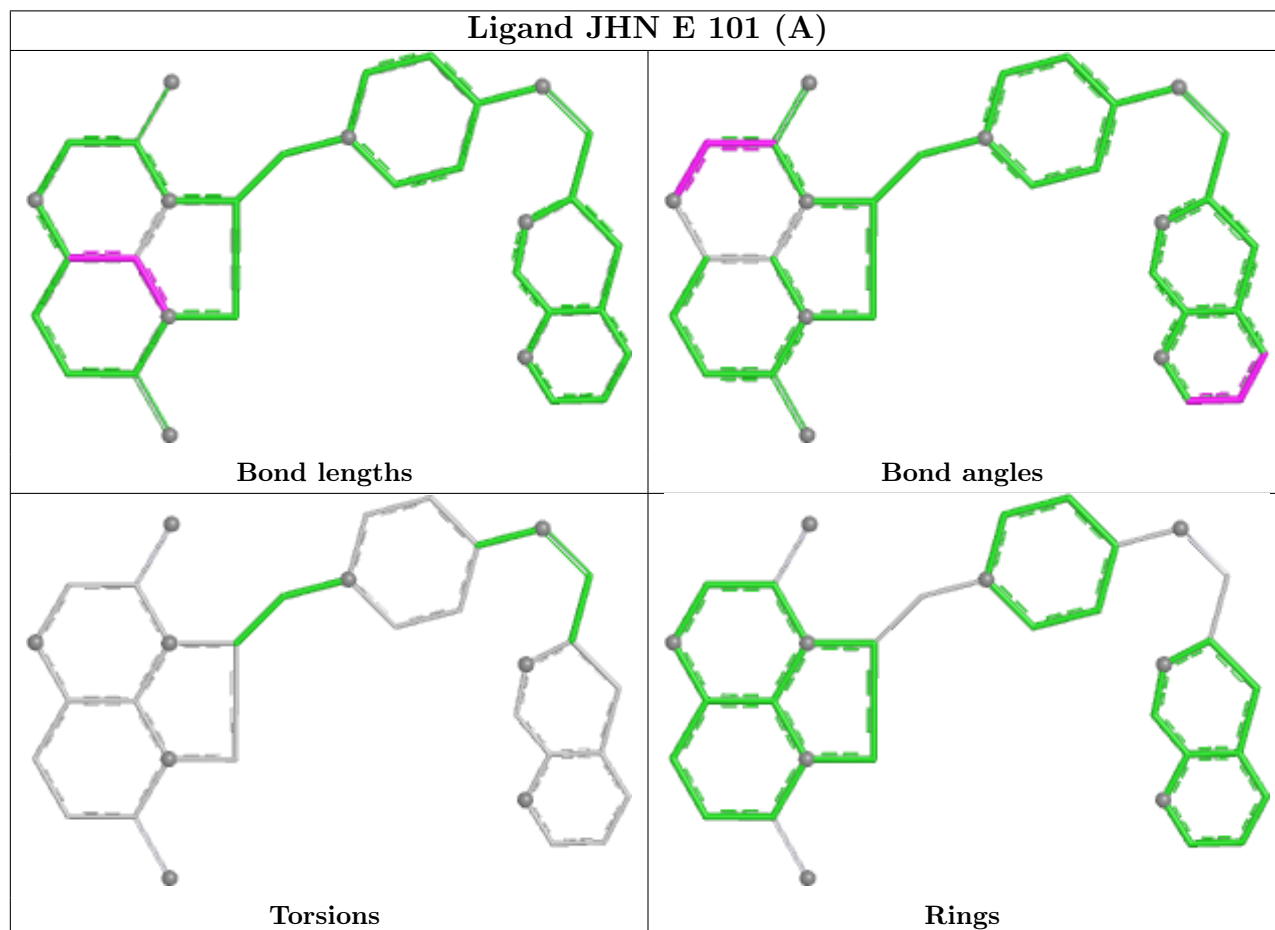
Mol	Chain	Res	Type	Atoms
8	E	101[B]	JHN	C10-C11-N4-C14
6	A	501	GOL	C1-C2-C3-O3
6	A	501	GOL	O2-C2-C3-O3
8	E	101[B]	JHN	C12-C11-N4-C14
8	E	101[B]	JHN	N4-C14-C15-N5

There are no ring outliers.

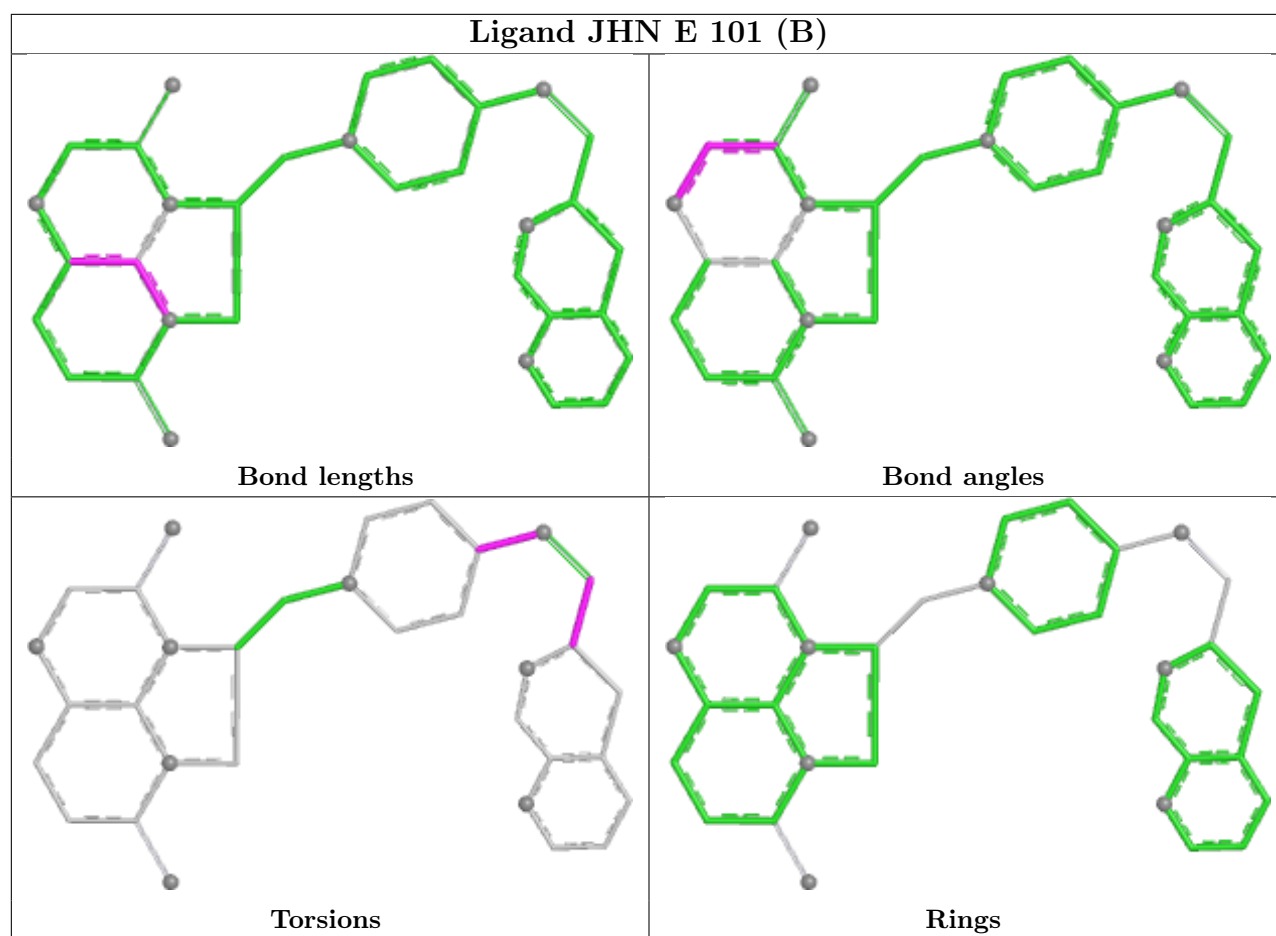
3 monomers are involved in 5 short contacts:

Mol	Chain	Res	Type	Clashes	Symm-Clashes
8	E	101[A]	JHN	1	0
6	A	501	GOL	1	0
8	E	101[B]	JHN	3	0

The following is a two-dimensional graphical depiction of Mogul quality analysis of bond lengths, bond angles, torsion angles, and ring geometry for all instances of the Ligand of Interest. In addition, ligands with molecular weight > 250 and outliers as shown on the validation Tables will also be included. For torsion angles, if less than 5% of the Mogul distribution of torsion angles is within 10 degrees of the torsion angle in question, then that torsion angle is considered an outlier. Any bond that is central to one or more torsion angles identified as an outlier by Mogul will be highlighted in the graph. For rings, the root-mean-square deviation (RMSD) between the ring in question and similar rings identified by Mogul is calculated over all ring torsion angles. If the average RMSD is greater than 60 degrees and the minimal RMSD between the ring in question and any Mogul-identified rings is also greater than 60 degrees, then that ring is considered an outlier. The outliers are highlighted in purple. The color gray indicates Mogul did not find sufficient equivalents in the CSD to analyse the geometry.







## 5.7 Other polymers [i](#)

There are no such residues in this entry.

## 5.8 Polymer linkage issues [i](#)

There are no chain breaks in this entry.

## 6 Fit of model and data [i](#)

### 6.1 Protein, DNA and RNA chains [i](#)

In the following table, the column labelled ‘#RSRZ> 2’ contains the number (and percentage) of RSRZ outliers, followed by percent RSRZ outliers for the chain as percentile scores relative to all X-ray entries and entries of similar resolution. The OWAB column contains the minimum, median, 95<sup>th</sup> percentile and maximum values of the occupancy-weighted average B-factor per residue. The column labelled ‘Q< 0.9’ lists the number of (and percentage) of residues with an average occupancy less than 0.9.

Mol	Chain	Analysed	<RSRZ>	#RSRZ>2	OWAB(Å <sup>2</sup> )	Q<0.9
1	B	189/202 (93%)	-0.19	1 (0%) 91   91	45, 61, 75, 88	0
1	D	190/202 (94%)	-0.17	1 (0%) 91   91	42, 60, 79, 94	0
2	A	473/490 (96%)	-0.20	4 (0%) 86   86	32, 49, 82, 102	0
2	C	481/490 (98%)	-0.27	2 (0%) 92   93	35, 50, 67, 78	0
3	E	20/20 (100%)	-0.57	0 100   100	41, 48, 59, 59	0
3	F	20/20 (100%)	-0.74	0 100   100	37, 48, 59, 62	0
All	All	1373/1424 (96%)	-0.23	8 (0%) 89   89	32, 53, 76, 102	0

The worst 5 of 8 RSRZ outliers are listed below:

Mol	Chain	Res	Type	RSRZ
2	A	491	GLY	5.3
1	B	580[A]	TYR	4.1
1	D	583	LEU	2.8
2	A	287	ASP	2.7
2	A	225	LEU	2.2

### 6.2 Non-standard residues in protein, DNA, RNA chains [i](#)

There are no non-standard protein/DNA/RNA residues in this entry.

### 6.3 Carbohydrates [i](#)

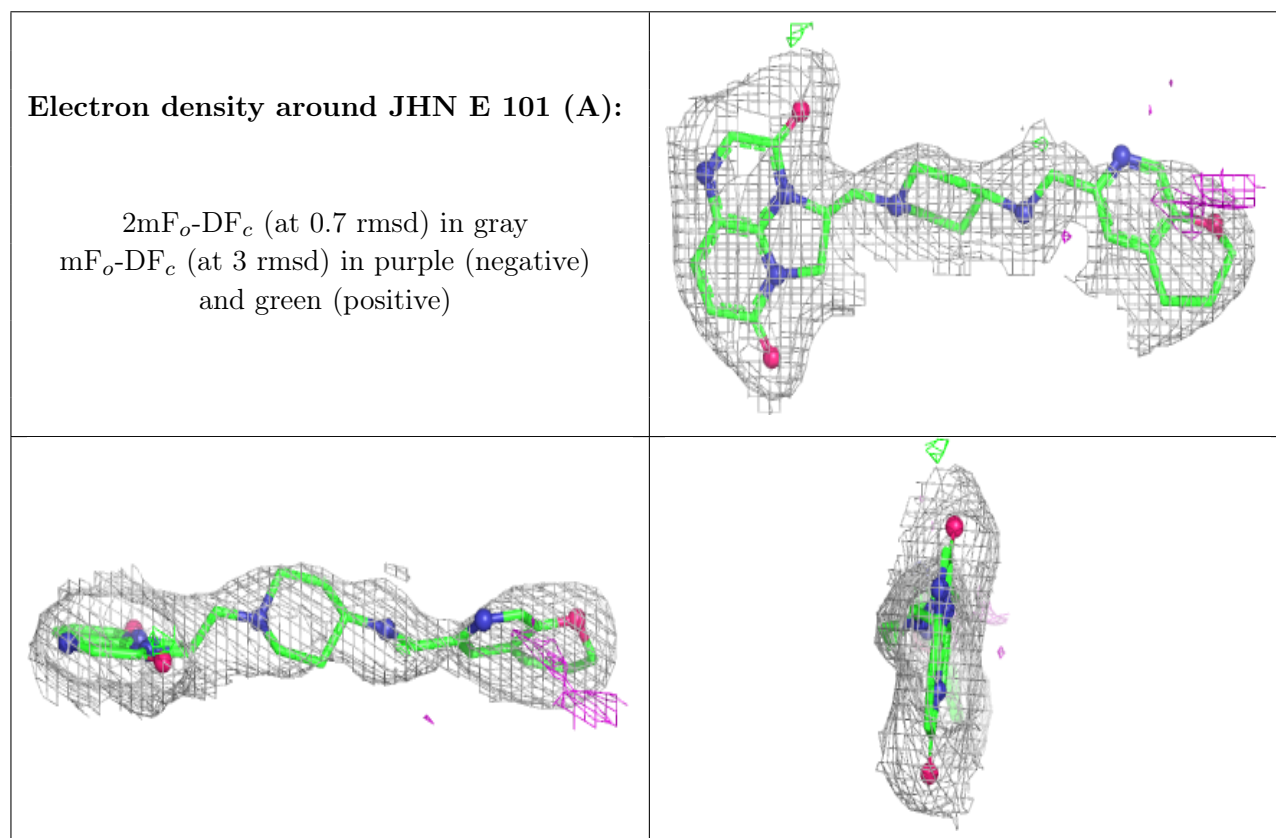
There are no monosaccharides in this entry.

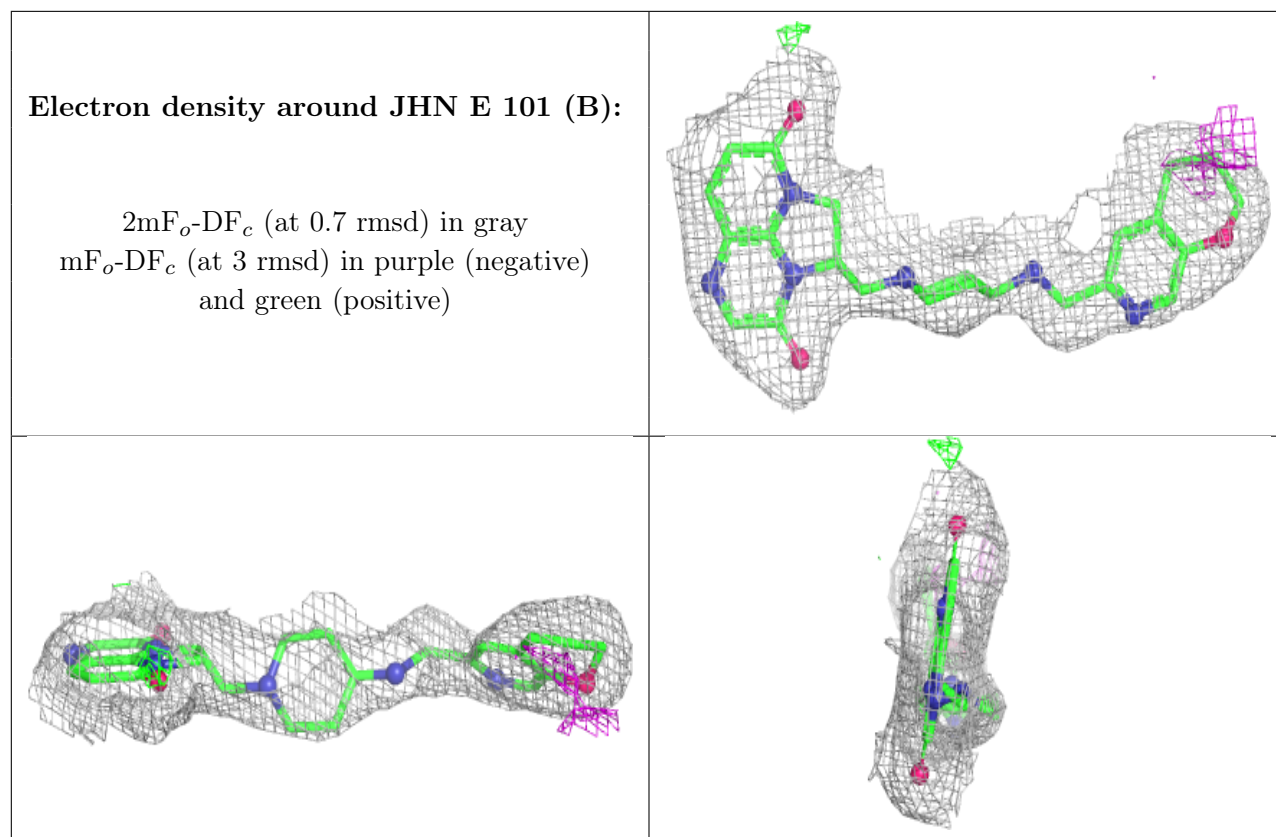
## 6.4 Ligands [i](#)

In the following table, the Atoms column lists the number of modelled atoms in the group and the number defined in the chemical component dictionary. The B-factors column lists the minimum, median, 95<sup>th</sup> percentile and maximum values of B factors of atoms in the group. The column labelled 'Q< 0.9' lists the number of atoms with occupancy less than 0.9.

Mol	Type	Chain	Res	Atoms	RSCC	RSR	B-factors(Å <sup>2</sup> )	Q<0.9
5	NA	B	702	1/1	0.52	0.22	91,91,91,91	0
4	MN	D	701[A]	1/1	0.87	0.09	38,38,38,38	1
6	GOL	A	501	6/6	0.93	0.11	61,65,65,67	0
7	SO4	C	501[A]	5/5	0.93	0.12	55,55,57,57	5
7	SO4	C	501[B]	5/5	0.93	0.12	61,62,62,62	5
8	JHN	E	101[A]	33/33	0.94	0.17	44,45,46,46	33
8	JHN	E	101[B]	33/33	0.94	0.17	36,37,39,40	33
4	MN	B	701[B]	1/1	0.97	0.06	45,45,45,45	1
4	MN	B	701[A]	1/1	0.97	0.06	34,34,34,34	1

The following is a graphical depiction of the model fit to experimental electron density of all instances of the Ligand of Interest. In addition, ligands with molecular weight > 250 and outliers as shown on the geometry validation Tables will also be included. Each fit is shown from different orientation to approximate a three-dimensional view.





## 6.5 Other polymers [i](#)

There are no such residues in this entry.