



Full wwPDB X-ray Structure Validation Report ⓘ

Apr 20, 2022 – 01:10 pm BST

PDB ID : 7QYN
Title : Mus musculus acetylcholinesterase in complex with 2-((hydroxyimino)methyl)-1-(5-(4-methyl-3-nitrobenzamido)pentyl)pyridinium
Authors : Forsgren, N.; Lindgren, C.; Edvinsson, L.; Linusson, A.; Ekstrom, F.
Deposited on : 2022-01-28
Resolution : 2.50 Å(reported)

This is a Full wwPDB X-ray Structure Validation Report for a publicly released PDB entry.

We welcome your comments at validation@mail.wwpdb.org

A user guide is available at

<https://www.wwpdb.org/validation/2017/XrayValidationReportHelp>

with specific help available everywhere you see the ⓘ symbol.

The following versions of software and data (see [references ⓘ](#)) were used in the production of this report:

MolProbity : 4.02b-467
Mogul : 1.8.4, CSD as541be (2020)
Xtriage (Phenix) : 1.13
EDS : 2.27
buster-report : 1.1.7 (2018)
Percentile statistics : 20191225.v01 (using entries in the PDB archive December 25th 2019)
Refmac : 5.8.0267
CCP4 : 7.1.010 (Gargrove)
Ideal geometry (proteins) : Engh & Huber (2001)
Ideal geometry (DNA, RNA) : Parkinson et al. (1996)
Validation Pipeline (wwPDB-VP) : 2.27

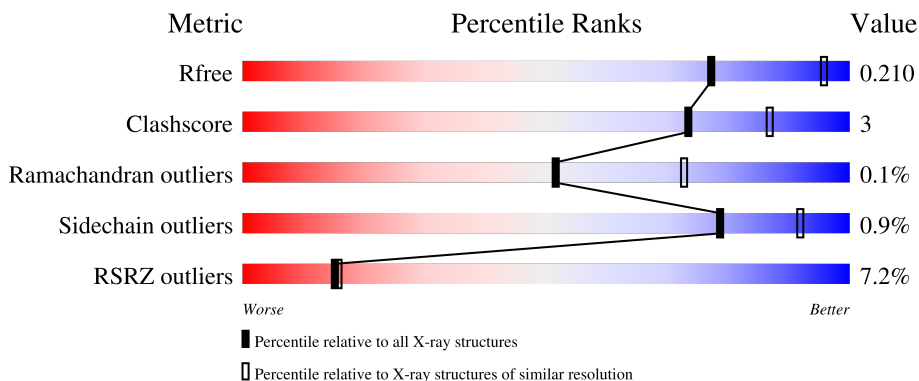
1 Overall quality at a glance

The following experimental techniques were used to determine the structure:

X-RAY DIFFRACTION

The reported resolution of this entry is 2.50 Å.

Percentile scores (ranging between 0-100) for global validation metrics of the entry are shown in the following graphic. The table shows the number of entries on which the scores are based.



Metric	Whole archive (#Entries)	Similar resolution (#Entries, resolution range(Å))
R_{free}	130704	4661 (2.50-2.50)
Clashscore	141614	5346 (2.50-2.50)
Ramachandran outliers	138981	5231 (2.50-2.50)
Sidechain outliers	138945	5233 (2.50-2.50)
RSRZ outliers	127900	4559 (2.50-2.50)

The table below summarises the geometric issues observed across the polymeric chains and their fit to the electron density. The red, orange, yellow and green segments of the lower bar indicate the fraction of residues that contain outliers for ≥ 3 , 2, 1 and 0 types of geometric quality criteria respectively. A grey segment represents the fraction of residues that are not modelled. The numeric value for each fraction is indicated below the corresponding segment, with a dot representing fractions $\leq 5\%$. The upper red bar (where present) indicates the fraction of residues that have poor fit to the electron density. The numeric value is given above the bar.

Mol	Chain	Length	Quality of chain
1	A	543	 6% 92% 7%
1	B	543	 8% 87% 11%

The following table lists non-polymeric compounds, carbohydrate monomers and non-standard residues in protein, DNA, RNA chains that are outliers for geometric or electron-density-fit criteria:

Mol	Type	Chain	Res	Chirality	Geometry	Clashes	Electron density
2	NAG	A	601	-	-	-	X
2	NAG	B	601	-	-	-	X
2	NAG	B	602	-	-	-	X
4	PG0	A	610	-	-	-	X
4	PG0	B	607	-	-	-	X

2 Entry composition [i](#)

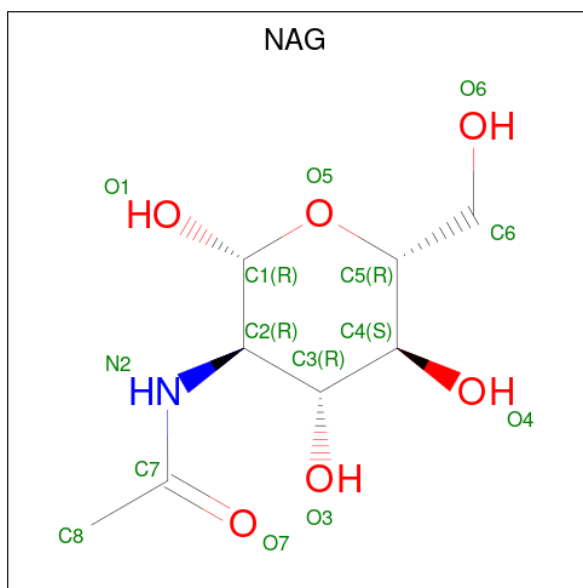
There are 8 unique types of molecules in this entry. The entry contains 8897 atoms, of which 0 are hydrogens and 0 are deuteriums.

In the tables below, the ZeroOcc column contains the number of atoms modelled with zero occupancy, the AltConf column contains the number of residues with at least one atom in alternate conformation and the Trace column contains the number of residues modelled with at most 2 atoms.

- Molecule 1 is a protein called Acetylcholinesterase.

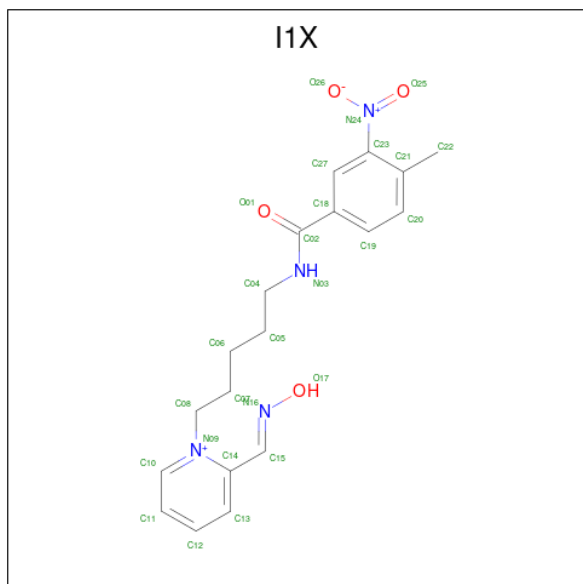
Mol	Chain	Residues	Atoms					ZeroOcc	AltConf	Trace
			Total	C	N	O	S			
1	A	537	Total 4195	C 2692	N 727	O 762	S 14	0	2	0
1	B	533	Total 4173	C 2680	N 720	O 759	S 14	0	3	0

- Molecule 2 is 2-acetamido-2-deoxy-beta-D-glucopyranose (three-letter code: NAG) (formula: $C_8H_{15}NO_6$).



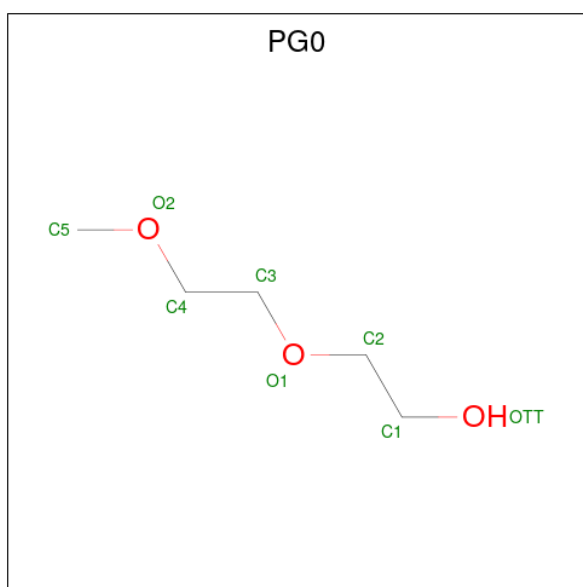
Mol	Chain	Residues	Atoms				ZeroOcc	AltConf
			Total	C	N	O		
2	A	1	Total 14	C 8	N 1	O 5	0	0
2	A	1	Total 14	C 8	N 1	O 5	0	0
2	B	1	Total 14	C 8	N 1	O 5	0	0
2	B	1	Total 14	C 8	N 1	O 5	0	0

- Molecule 3 is 4-methyl-3-nitro- {N}-[(2 {E},4 {E})-5-[2-[(oxidanylamino)methyl]pyridin-1-yl]penta-2,4-dienyl]benzamide (three-letter code: I1X) (formula: C₁₉H₂₃N₄O₄) (labeled as "Ligand of Interest" by depositor).



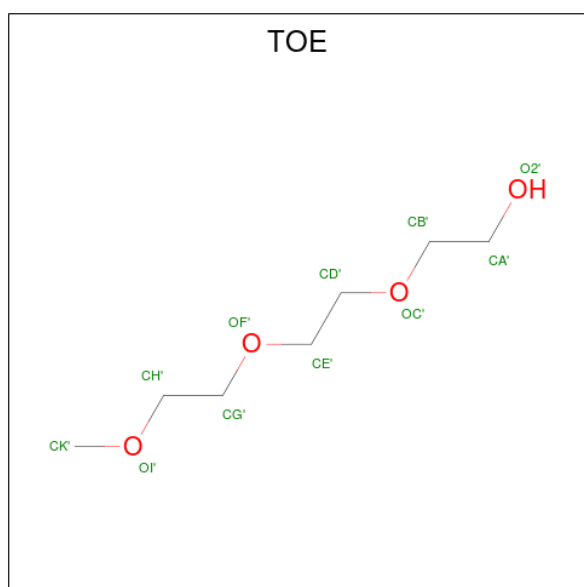
Mol	Chain	Residues	Atoms				ZeroOcc	AltConf
			Total	C	N	O		
3	A	1	Total	C	N	O	0	0
			27	19	4	4		
3	B	1	Total	C	N	O	0	0
			27	19	4	4		

- Molecule 4 is 2-(2-METHOXYETHOXY)ETHANOL (three-letter code: PG0) (formula: C₅H₁₂O₃).



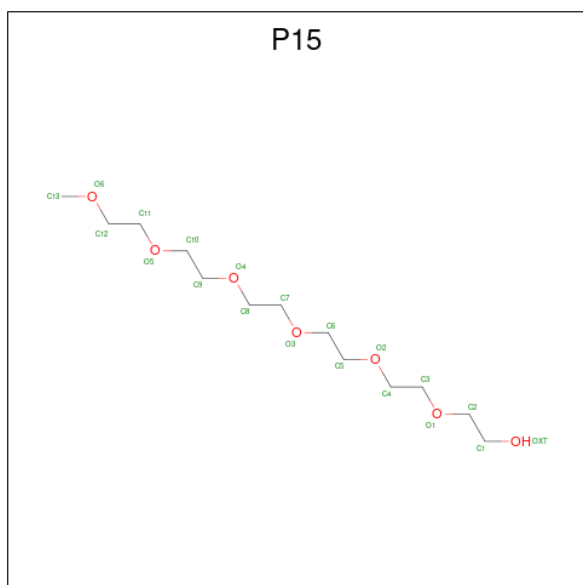
Mol	Chain	Residues	Atoms	ZeroOcc	AltConf
4	A	1	Total C O 8 5 3	0	0
4	A	1	Total C O 8 5 3	0	0
4	A	1	Total C O 8 5 3	0	0
4	A	1	Total C O 8 5 3	0	0
4	A	1	Total C O 8 5 3	0	0
4	A	1	Total C O 8 5 3	0	0
4	A	1	Total C O 8 5 3	0	0
4	A	1	Total C O 8 5 3	0	0
4	B	1	Total C O 8 5 3	0	0
4	B	1	Total C O 8 5 3	0	0
4	B	1	Total C O 8 5 3	0	0
4	B	1	Total C O 8 5 3	0	0

- Molecule 5 is 2-[2-(2-METHOXY-ETHOXY)-ETHOXY]-ETHOXYL (three-letter code: TOE) (formula: C₇H₁₆O₄).



Mol	Chain	Residues	Atoms			ZeroOcc	AltConf
5	B	1	Total	C	O	0	0
			11	7	4		
5	B	1	Total	C	O	0	0
			11	7	4		

- Molecule 6 is 2,5,8,11,14,17-HEXAOXANONADECAN-19-OL (three-letter code: P15) (formula: $C_{13}H_{28}O_7$).



Mol	Chain	Residues	Atoms			ZeroOcc	AltConf
6	B	1	Total	C	O	0	0
			20	13	7		

- Molecule 7 is CHLORIDE ION (three-letter code: CL) (formula: Cl).

Mol	Chain	Residues	Atoms		ZeroOcc	AltConf
7	B	1	Total	Cl	0	0
			1	1		

- Molecule 8 is water.

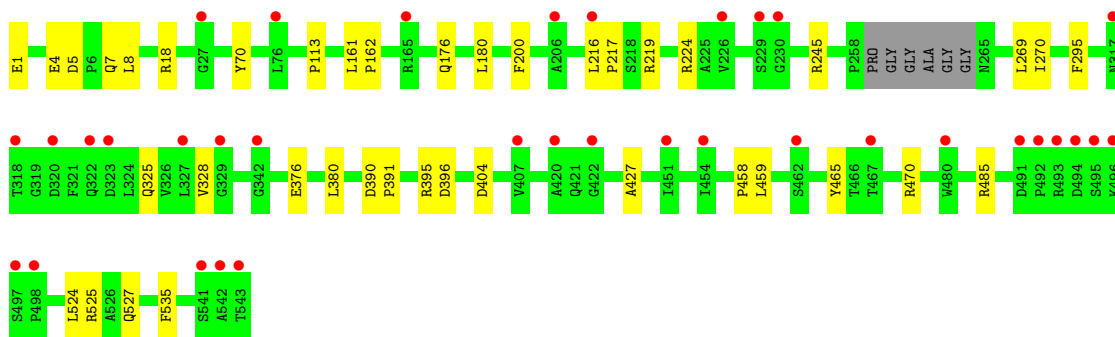
Mol	Chain	Residues	Atoms		ZeroOcc	AltConf
8	A	153	Total	O	0	0
			153	153		
8	B	135	Total	O	0	0
			135	135		

3 Residue-property plots [i](#)


These plots are drawn for all protein, RNA, DNA and oligosaccharide chains in the entry. The first graphic for a chain summarises the proportions of the various outlier classes displayed in the second graphic. The second graphic shows the sequence view annotated by issues in geometry and electron density. Residues are color-coded according to the number of geometric quality criteria for which they contain at least one outlier: green = 0, yellow = 1, orange = 2 and red = 3 or more. A red dot above a residue indicates a poor fit to the electron density ($RSRZ > 2$). Stretches of 2 or more consecutive residues without any outlier are shown as a green connector. Residues present in the sample, but not in the model, are shown in grey.

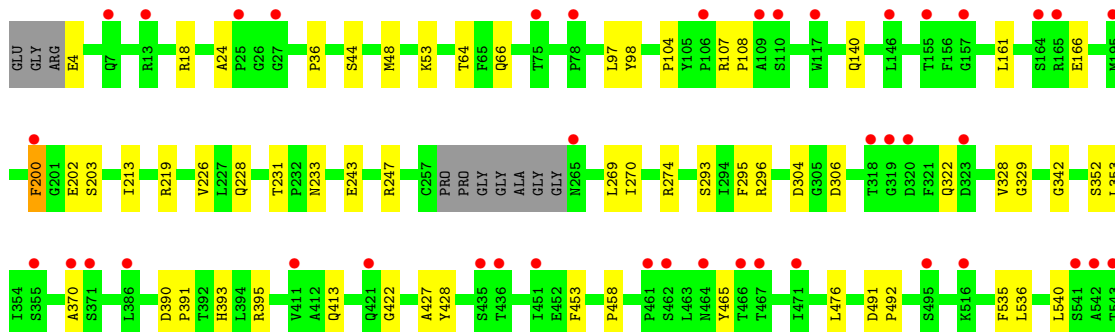
- Molecule 1: Acetylcholinesterase

Chain A: 



- Molecule 1: Acetylcholinesterase

Chain B: 



4 Data and refinement statistics

Property	Value	Source
Space group	P 21 21 21	Depositor
Cell constants a, b, c, α , β , γ	78.59Å 110.76Å 227.91Å 90.00° 90.00° 90.00°	Depositor
Resolution (Å)	28.69 – 2.50 29.53 – 2.50	Depositor EDS
% Data completeness (in resolution range)	99.7 (28.69-2.50) 99.9 (29.53-2.50)	Depositor EDS
R_{merge}	0.08	Depositor
R_{sym}	(Not available)	Depositor
$\langle I/\sigma(I) \rangle$ ¹	3.12 (at 2.51Å)	Xtriage
Refinement program	PHENIX 1.8.4_1496	Depositor
R, R_{free}	0.166 , 0.202 0.174 , 0.210	Depositor DCC
R_{free} test set	1400 reflections (2.01%)	wwPDB-VP
Wilson B-factor (Å ²)	42.5	Xtriage
Anisotropy	0.780	Xtriage
Bulk solvent k_{sol} (e/Å ³), B_{sol} (Å ²)	(Not available) , (Not available)	EDS
L-test for twinning ²	$\langle L \rangle = 0.49$, $\langle L^2 \rangle = 0.32$	Xtriage
Estimated twinning fraction	No twinning to report.	Xtriage
F_o, F_c correlation	0.95	EDS
Total number of atoms	8897	wwPDB-VP
Average B, all atoms (Å ²)	51.0	wwPDB-VP

Xtriage's analysis on translational NCS is as follows: *The largest off-origin peak in the Patterson function is 2.82% of the height of the origin peak. No significant pseudotranslation is detected.*

¹Intensities estimated from amplitudes.

²Theoretical values of $\langle |L| \rangle$, $\langle L^2 \rangle$ for acentric reflections are 0.5, 0.333 respectively for untwinned datasets, and 0.375, 0.2 for perfectly twinned datasets.

5 Model quality [i](#)

5.1 Standard geometry [i](#)

Bond lengths and bond angles in the following residue types are not validated in this section: TOE, NAG, P15, I1X, CL, PG0

The Z score for a bond length (or angle) is the number of standard deviations the observed value is removed from the expected value. A bond length (or angle) with $|Z| > 5$ is considered an outlier worth inspection. RMSZ is the root-mean-square of all Z scores of the bond lengths (or angles).

Mol	Chain	Bond lengths		Bond angles	
		RMSZ	# Z >5	RMSZ	# Z >5
1	A	0.39	0/4325	0.54	0/5911
1	B	0.37	0/4306	0.54	0/5886
All	All	0.38	0/8631	0.54	0/11797

There are no bond length outliers.

There are no bond angle outliers.

There are no chirality outliers.

There are no planarity outliers.

5.2 Too-close contacts [i](#)

In the following table, the Non-H and H(model) columns list the number of non-hydrogen atoms and hydrogen atoms in the chain respectively. The H(added) column lists the number of hydrogen atoms added and optimized by MolProbity. The Clashes column lists the number of clashes within the asymmetric unit, whereas Symm-Clashes lists symmetry-related clashes.

Mol	Chain	Non-H	H(model)	H(added)	Clashes	Symm-Clashes
1	A	4195	0	4081	22	0
1	B	4173	0	4055	35	0
2	A	28	0	26	0	0
2	B	28	0	26	0	0
3	A	27	0	0	0	0
3	B	27	0	0	1	0
4	A	56	0	84	0	0
4	B	32	0	48	1	0
5	B	22	0	32	0	0
6	B	20	0	28	2	0
7	B	1	0	0	0	0

Continued on next page...

Continued from previous page...

Mol	Chain	Non-H	H(model)	H(added)	Clashes	Symm-Clashes
8	A	153	0	0	1	0
8	B	135	0	0	1	0
All	All	8897	0	8380	56	0

The all-atom clashscore is defined as the number of clashes found per 1000 atoms (including hydrogen atoms). The all-atom clashscore for this structure is 3.

All (56) close contacts within the same asymmetric unit are listed below, sorted by their clash magnitude.

Atom-1	Atom-2	Interatomic distance (Å)	Clash overlap (Å)
1:B:390:ASP:OD2	1:B:393[A]:HIS:ND1	2.19	0.76
1:A:113:PRO:HG2	1:A:485:ARG:HG2	1.82	0.60
1:A:161:LEU:HD11	1:A:269:LEU:HD22	1.84	0.60
1:A:380:LEU:HD12	1:B:535:PHE:HB2	1.82	0.60
1:B:370:ALA:HA	1:B:540:LEU:HD21	1.89	0.55
1:B:4:GLU:OE1	1:B:18:ARG:NH1	2.34	0.55
1:B:24:ALA:HB3	1:B:140:GLN:HG3	1.89	0.55
1:B:166:GLU:HG2	1:B:270:ILE:HD13	1.90	0.54
1:B:4:GLU:OE1	1:B:18:ARG:HD3	2.09	0.53
1:B:458:PRO:HA	1:B:465:TYR:CD2	2.44	0.52
1:A:395:ARG:HD2	1:A:396:ASP:OD1	2.10	0.52
1:B:413:GLN:HG3	4:B:604:PG0:H42	1.91	0.51
1:A:527:GLN:HE21	6:B:610:P15:H11	1.75	0.51
1:A:459:LEU:HD23	1:A:470:ARG:HG2	1.91	0.51
1:A:535:PHE:CE2	6:B:610:P15:H71	2.46	0.50
1:B:161:LEU:HD21	1:B:269:LEU:HD23	1.95	0.49
1:B:66:GLN:HG3	1:B:98:TYR:CD2	2.48	0.49
1:B:104:PRO:HG2	1:B:108:PRO:HG3	1.95	0.48
1:B:213:ILE:O	1:B:219:ARG:HD3	2.13	0.48
1:A:216:LEU:HG	1:A:217:PRO:HD3	1.96	0.47
1:B:200:PHE:CB	1:B:226:VAL:HB	2.44	0.47
1:A:328:VAL:O	1:A:427:ALA:HA	2.15	0.47
1:B:231:THR:HB	1:B:233:ASN:OD1	2.15	0.47
1:B:48:MET:SD	1:B:166:GLU:HA	2.54	0.47
1:B:322:GLN:HG3	1:B:422:GLY:HA3	1.98	0.46
1:A:458:PRO:HA	1:A:465:TYR:CD2	2.51	0.46
1:B:353:LEU:HB3	1:B:391:PRO:HB2	1.98	0.46
1:A:390:ASP:HA	1:A:391:PRO:HD3	1.84	0.45
1:B:64:THR:HG22	8:B:796:HOH:O	2.16	0.45
1:B:203:SER:OG	3:B:603:I1X:O17	2.31	0.45
1:A:161:LEU:HD12	1:A:270:ILE:HD11	1.99	0.45

Continued on next page...

Continued from previous page...

Atom-1	Atom-2	Interatomic distance (Å)	Clash overlap (Å)
1:A:162:PRO:HB2	1:A:245[B]:ARG:HH21	1.82	0.45
1:B:107:ARG:HE	1:B:107:ARG:HB2	1.48	0.45
1:B:202:GLU:HA	1:B:228:GLN:O	2.17	0.45
1:B:328:VAL:O	1:B:427:ALA:HA	2.17	0.44
1:A:404:ASP:OD1	1:A:525:ARG:NH1	2.51	0.44
1:B:329:GLY:HA3	1:B:428:TYR:CZ	2.52	0.44
1:A:376:GLU:O	1:A:380:LEU:HG	2.18	0.43
1:B:329:GLY:HA3	1:B:428:TYR:CE2	2.54	0.43
1:A:4:GLU:OE1	1:A:18:ARG:HD3	2.18	0.43
1:A:5:ASP:HB3	1:A:8:LEU:HD12	2.00	0.43
1:B:453:PHE:HB3	1:B:476:LEU:HD12	2.01	0.43
1:B:36:PRO:HB2	1:B:53:LYS:HD3	2.00	0.42
1:A:224:ARG:HG2	1:A:325:GLN:HB2	2.01	0.42
1:B:536:LEU:HD12	1:B:536:LEU:HA	1.82	0.42
1:A:219:ARG:HA	1:A:219:ARG:HD2	1.85	0.42
1:B:97:LEU:HD23	1:B:97:LEU:HA	1.81	0.42
1:B:44:SER:HA	1:B:274:ARG:HD2	2.02	0.41
1:B:304:ASP:OD2	1:B:306:ASP:HB3	2.20	0.41
1:A:7:GLN:HB3	8:A:826:HOH:O	2.19	0.41
1:B:491:ASP:HA	1:B:492:PRO:HD3	1.88	0.41
1:A:1:GLU:HA	1:A:4:GLU:OE2	2.20	0.41
1:A:176:GLN:O	1:A:180:LEU:HG	2.20	0.41
1:B:352:SER:O	1:B:395:ARG:HG3	2.20	0.40
1:B:243:GLU:O	1:B:247:ARG:HG3	2.20	0.40
1:B:200:PHE:HB2	1:B:226:VAL:HB	2.03	0.40

There are no symmetry-related clashes.

5.3 Torsion angles [i](#)

5.3.1 Protein backbone [i](#)

In the following table, the Percentiles column shows the percent Ramachandran outliers of the chain as a percentile score with respect to all X-ray entries followed by that with respect to entries of similar resolution.

The Analysed column shows the number of residues for which the backbone conformation was analysed, and the total number of residues.

Mol	Chain	Analysed	Favoured	Allowed	Outliers	Percentiles
1	A	535/543 (98%)	516 (96%)	19 (4%)	0	100 100

Continued on next page...

Continued from previous page...

Mol	Chain	Analysed	Favoured	Allowed	Outliers	Percentiles	
1	B	532/543 (98%)	513 (96%)	18 (3%)	1 (0%)	47	68
All	All	1067/1086 (98%)	1029 (96%)	37 (4%)	1 (0%)	51	73

All (1) Ramachandran outliers are listed below:

Mol	Chain	Res	Type
1	B	342	GLY

5.3.2 Protein sidechains [i](#)

In the following table, the Percentiles column shows the percent sidechain outliers of the chain as a percentile score with respect to all X-ray entries followed by that with respect to entries of similar resolution.

The Analysed column shows the number of residues for which the sidechain conformation was analysed, and the total number of residues.

Mol	Chain	Analysed	Rotameric	Outliers	Percentiles	
1	A	441/443 (100%)	437 (99%)	4 (1%)	78	92
1	B	440/443 (99%)	436 (99%)	4 (1%)	78	92
All	All	881/886 (99%)	873 (99%)	8 (1%)	78	92

All (8) residues with a non-rotameric sidechain are listed below:

Mol	Chain	Res	Type
1	A	70	TYR
1	A	200	PHE
1	A	295	PHE
1	A	524	LEU
1	B	200	PHE
1	B	293	SER
1	B	295	PHE
1	B	296	ARG

Sometimes sidechains can be flipped to improve hydrogen bonding and reduce clashes. There are no such sidechains identified.

5.3.3 RNA [i](#)

There are no RNA molecules in this entry.

5.4 Non-standard residues in protein, DNA, RNA chains [i](#)

There are no non-standard protein/DNA/RNA residues in this entry.

5.5 Carbohydrates [i](#)

There are no monosaccharides in this entry.

5.6 Ligand geometry [i](#)

Of 21 ligands modelled in this entry, 1 is monoatomic - leaving 20 for Mogul analysis.

In the following table, the Counts columns list the number of bonds (or angles) for which Mogul statistics could be retrieved, the number of bonds (or angles) that are observed in the model and the number of bonds (or angles) that are defined in the Chemical Component Dictionary. The Link column lists molecule types, if any, to which the group is linked. The Z score for a bond length (or angle) is the number of standard deviations the observed value is removed from the expected value. A bond length (or angle) with $|Z| > 2$ is considered an outlier worth inspection. RMSZ is the root-mean-square of all Z scores of the bond lengths (or angles).

Mol	Type	Chain	Res	Link	Bond lengths			Bond angles		
					Counts	RMSZ	$\# Z > 2$	Counts	RMSZ	$\# Z > 2$
4	PG0	A	606	-	7,7,7	0.56	0	6,6,6	0.78	0
2	NAG	B	601	1	14,14,15	0.60	0	17,19,21	0.73	1 (5%)
3	I1X	B	603	-	27,28,28	1.74	3 (11%)	29,36,36	1.15	4 (13%)
4	PG0	B	604	-	7,7,7	0.58	0	6,6,6	0.64	0
4	PG0	A	605	-	7,7,7	0.56	0	6,6,6	0.77	0
5	TOE	B	608	-	10,10,10	0.58	0	9,9,9	0.96	0
2	NAG	A	602	1	14,14,15	0.57	0	17,19,21	0.37	0
2	NAG	A	601	1	14,14,15	0.55	0	17,19,21	0.62	0
4	PG0	B	605	-	7,7,7	0.60	0	6,6,6	0.93	0
4	PG0	B	607	-	7,7,7	0.59	0	6,6,6	0.81	0
4	PG0	A	608	-	7,7,7	0.57	0	6,6,6	0.78	0
4	PG0	A	607	-	7,7,7	0.63	0	6,6,6	0.80	0
2	NAG	B	602	1	14,14,15	0.39	0	17,19,21	0.71	1 (5%)
5	TOE	B	609	-	10,10,10	0.57	0	9,9,9	0.81	0
4	PG0	A	604	-	7,7,7	0.59	0	6,6,6	0.78	0
4	PG0	B	606	-	7,7,7	0.57	0	6,6,6	0.80	0
6	P15	B	610	-	19,19,19	0.57	0	18,18,18	0.85	0
3	I1X	A	603	-	27,28,28	1.71	3 (11%)	29,36,36	1.11	1 (3%)
4	PG0	A	610	-	7,7,7	0.63	0	6,6,6	0.69	0
4	PG0	A	609	-	7,7,7	0.56	0	6,6,6	0.72	0

In the following table, the Chirals column lists the number of chiral outliers, the number of chiral centers analysed, the number of these observed in the model and the number defined in the Chemical Component Dictionary. Similar counts are reported in the Torsion and Rings columns. '-' means no outliers of that kind were identified.

Mol	Type	Chain	Res	Link	Chirals	Torsions	Rings
4	PG0	A	606	-	-	1/5/5/5	-
2	NAG	B	601	1	-	2/6/23/26	0/1/1/1
3	I1X	B	603	-	-	3/18/20/20	0/2/2/2
4	PG0	B	604	-	-	3/5/5/5	-
4	PG0	A	605	-	-	3/5/5/5	-
5	TOE	B	608	-	-	3/8/8/8	-
2	NAG	A	602	1	-	1/6/23/26	0/1/1/1
2	NAG	A	601	1	-	2/6/23/26	0/1/1/1
4	PG0	B	605	-	-	3/5/5/5	-
4	PG0	B	607	-	-	2/5/5/5	-
4	PG0	A	608	-	-	3/5/5/5	-
4	PG0	A	607	-	-	3/5/5/5	-
2	NAG	B	602	1	-	0/6/23/26	0/1/1/1
5	TOE	B	609	-	-	6/8/8/8	-
4	PG0	A	604	-	-	3/5/5/5	-
4	PG0	B	606	-	-	1/5/5/5	-
6	P15	B	610	-	-	7/17/17/17	-
3	I1X	A	603	-	-	3/18/20/20	0/2/2/2
4	PG0	A	610	-	-	4/5/5/5	-
4	PG0	A	609	-	-	2/5/5/5	-

All (6) bond length outliers are listed below:

Mol	Chain	Res	Type	Atoms	Z	Observed(Å)	Ideal(Å)
3	A	603	I1X	C02-N03	6.38	1.47	1.33
3	B	603	I1X	C02-N03	6.37	1.47	1.33
3	B	603	I1X	O25-N24	4.66	1.30	1.22
3	A	603	I1X	O25-N24	4.46	1.30	1.22
3	B	603	I1X	O17-N16	-2.57	1.34	1.40
3	A	603	I1X	O17-N16	-2.55	1.34	1.40

All (7) bond angle outliers are listed below:

Mol	Chain	Res	Type	Atoms	Z	Observed(°)	Ideal(°)
3	B	603	I1X	O25-N24-C23	2.54	123.38	119.03

Continued on next page...

Continued from previous page...

Mol	Chain	Res	Type	Atoms	Z	Observed(°)	Ideal(°)
3	A	603	I1X	C07-C08-N09	2.51	116.99	112.31
2	B	601	NAG	C1-O5-C5	2.44	115.50	112.19
2	B	602	NAG	C1-O5-C5	2.28	115.28	112.19
3	B	603	I1X	C04-N03-C02	-2.02	117.47	122.08
3	B	603	I1X	O01-C02-N03	-2.01	118.61	122.61
3	B	603	I1X	C07-C08-N09	2.01	116.05	112.31

There are no chirality outliers.

All (55) torsion outliers are listed below:

Mol	Chain	Res	Type	Atoms
2	B	601	NAG	O5-C5-C6-O6
4	A	608	PG0	O1-C3-C4-O2
4	A	605	PG0	O1-C3-C4-O2
2	A	601	NAG	O5-C5-C6-O6
2	A	601	NAG	C4-C5-C6-O6
4	B	604	PG0	O1-C3-C4-O2
5	B	609	TOE	OF'-CG'-CH'-OI'
2	B	601	NAG	C4-C5-C6-O6
4	B	605	PG0	O1-C3-C4-O2
4	A	607	PG0	OTT-C1-C2-O1
4	B	606	PG0	O1-C3-C4-O2
6	B	610	P15	O1-C3-C4-O2
5	B	608	TOE	OF'-CG'-CH'-OI'
6	B	610	P15	O5-C10-C9-O4
4	A	606	PG0	OTT-C1-C2-O1
5	B	609	TOE	OC'-CD'-CE'-OF'
5	B	608	TOE	OC'-CD'-CE'-OF'
4	A	610	PG0	C1-C2-O1-C3
4	B	607	PG0	O1-C3-C4-O2
4	A	605	PG0	OTT-C1-C2-O1
6	B	610	P15	C9-C10-O5-C11
3	A	603	I1X	C05-C06-C07-C08
4	A	604	PG0	OTT-C1-C2-O1
4	B	604	PG0	OTT-C1-C2-O1
4	B	605	PG0	OTT-C1-C2-O1
4	B	607	PG0	OTT-C1-C2-O1
5	B	609	TOE	O2'-CA'-CB'-OC'
3	B	603	I1X	C05-C06-C07-C08
2	A	602	NAG	O5-C5-C6-O6
6	B	610	P15	O5-C11-C12-O6
3	B	603	I1X	N03-C04-C05-C06

Continued on next page...

Continued from previous page...

Mol	Chain	Res	Type	Atoms
3	A	603	I1X	C27-C23-N24-O25
4	B	604	PG0	C3-C4-O2-C5
4	A	608	PG0	OTT-C1-C2-O1
4	A	609	PG0	OTT-C1-C2-O1
3	B	603	I1X	C27-C23-N24-O25
4	A	610	PG0	C4-C3-O1-C2
6	B	610	P15	C4-C3-O1-C2
4	A	605	PG0	C1-C2-O1-C3
5	B	609	TOE	CH'-CG'-OF'-CE'
4	A	610	PG0	C3-C4-O2-C5
5	B	609	TOE	CG'-CH'-OI'-CK'
6	B	610	P15	C3-C4-O2-C5
5	B	609	TOE	CE'-CD'-OC'-CB'
4	A	608	PG0	C4-C3-O1-C2
5	B	608	TOE	CE'-CD'-OC'-CB'
4	A	607	PG0	C1-C2-O1-C3
4	B	605	PG0	C4-C3-O1-C2
4	A	609	PG0	O1-C3-C4-O2
4	A	610	PG0	O1-C3-C4-O2
4	A	604	PG0	O1-C3-C4-O2
3	A	603	I1X	N03-C04-C05-C06
4	A	607	PG0	C4-C3-O1-C2
6	B	610	P15	C5-C6-O3-C7
4	A	604	PG0	C4-C3-O1-C2

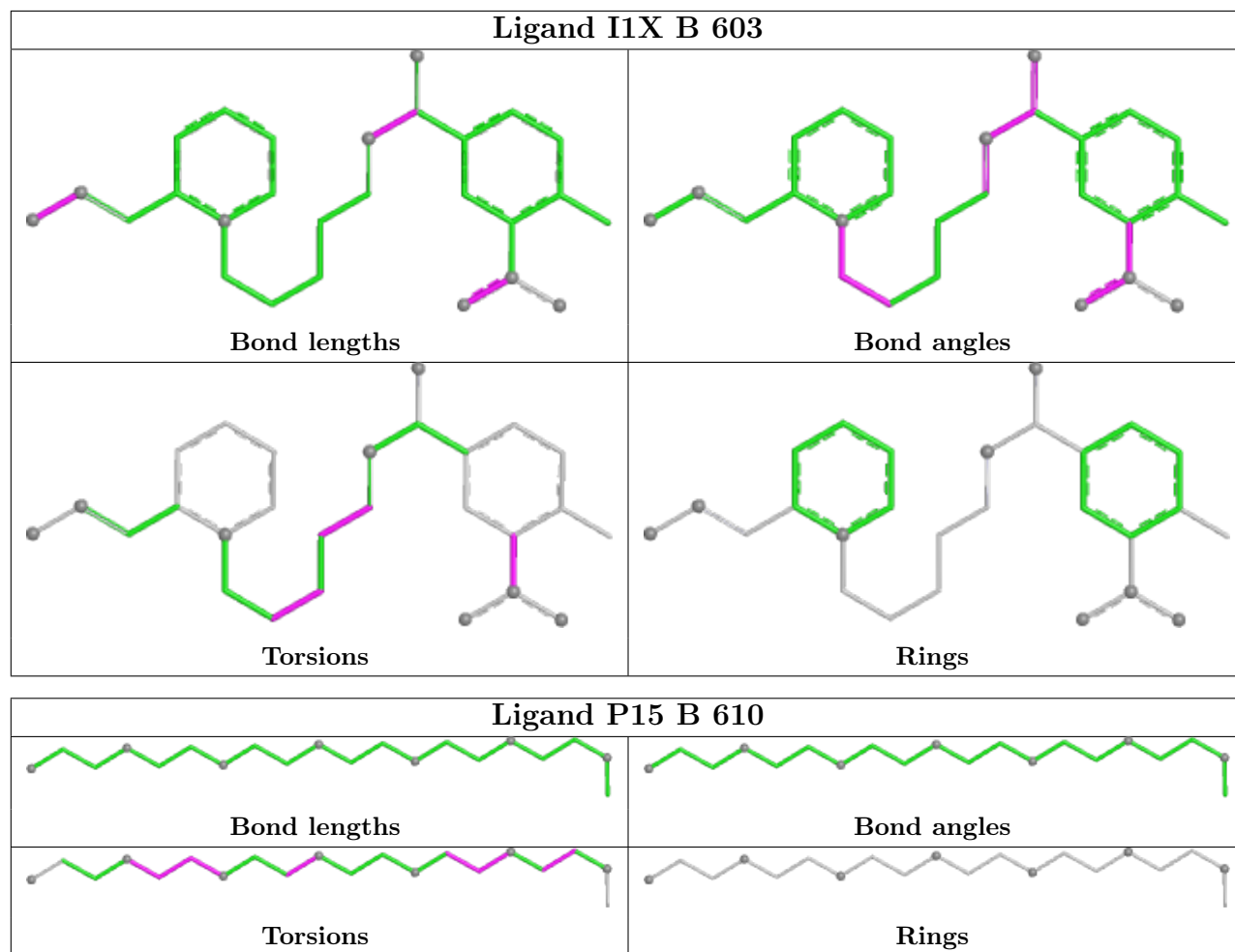
There are no ring outliers.

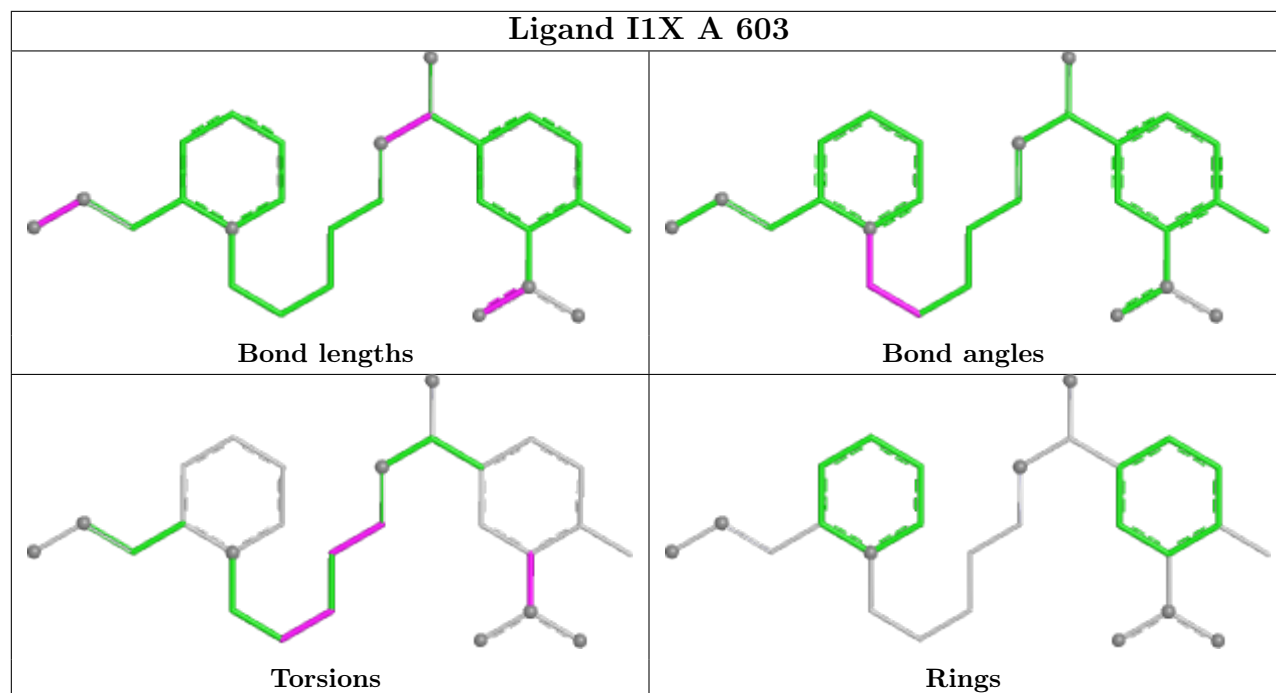
3 monomers are involved in 4 short contacts:

Mol	Chain	Res	Type	Clashes	Symm-Clashes
3	B	603	I1X	1	0
4	B	604	PG0	1	0
6	B	610	P15	2	0

The following is a two-dimensional graphical depiction of Mogul quality analysis of bond lengths, bond angles, torsion angles, and ring geometry for all instances of the Ligand of Interest. In addition, ligands with molecular weight > 250 and outliers as shown on the validation Tables will also be included. For torsion angles, if less than 5% of the Mogul distribution of torsion angles is within 10 degrees of the torsion angle in question, then that torsion angle is considered an outlier. Any bond that is central to one or more torsion angles identified as an outlier by Mogul will be highlighted in the graph. For rings, the root-mean-square deviation (RMSD) between the ring in question and similar rings identified by Mogul is calculated over all ring torsion angles. If the average RMSD is greater than 60 degrees and the minimal RMSD between the ring in question and

any Mogul-identified rings is also greater than 60 degrees, then that ring is considered an outlier. The outliers are highlighted in purple. The color gray indicates Mogul did not find sufficient equivalents in the CSD to analyse the geometry.





5.7 Other polymers [i](#)

There are no such residues in this entry.

5.8 Polymer linkage issues [i](#)

There are no chain breaks in this entry.

6 Fit of model and data

6.1 Protein, DNA and RNA chains

In the following table, the column labelled ‘#RSRZ > 2’ contains the number (and percentage) of RSRZ outliers, followed by percent RSRZ outliers for the chain as percentile scores relative to all X-ray entries and entries of similar resolution. The OWAB column contains the minimum, median, 95th percentile and maximum values of the occupancy-weighted average B-factor per residue. The column labelled ‘Q < 0.9’ lists the number of (and percentage) of residues with an average occupancy less than 0.9.

Mol	Chain	Analysed	<RSRZ>	#RSRZ>2	OWAB(Å ²)	Q<0.9
1	A	537/543 (98%)	0.49	35 (6%) 18 19	31, 45, 73, 130	0
1	B	533/543 (98%)	0.56	42 (7%) 12 12	34, 51, 78, 112	0
All	All	1070/1086 (98%)	0.53	77 (7%) 15 16	31, 48, 75, 130	0

All (77) RSRZ outliers are listed below:

Mol	Chain	Res	Type	RSRZ
1	B	542	ALA	6.7
1	A	495	SER	6.7
1	B	543	THR	6.1
1	A	542	ALA	5.5
1	A	493	ARG	4.9
1	A	322	GLN	4.6
1	A	496	LYS	4.5
1	A	543	THR	3.9
1	B	461	PRO	3.8
1	A	497	SER	3.8
1	A	317	ASN	3.7
1	B	109	ALA	3.7
1	A	541	SER	3.6
1	A	226	VAL	3.6
1	A	462	SER	3.6
1	A	323	ASP	3.5
1	A	320	ASP	3.4
1	A	494	ASP	3.3
1	B	265	ASN	3.2
1	A	454	ILE	3.2
1	B	462	SER	3.1
1	B	13	ARG	3.0
1	A	420	ALA	3.0
1	B	323	ASP	3.0

Continued on next page...

Continued from previous page...

Mol	Chain	Res	Type	RSRZ
1	A	27	GLY	3.0
1	A	230	GLY	3.0
1	B	370	ALA	3.0
1	B	106	PRO	3.0
1	A	422	GLY	2.9
1	B	195	MET	2.8
1	A	318	THR	2.7
1	B	320	ASP	2.7
1	A	216	LEU	2.7
1	A	329	GLY	2.6
1	B	27	GLY	2.6
1	B	541	SER	2.6
1	A	165	ARG	2.6
1	B	421	GLN	2.6
1	B	78	PRO	2.6
1	B	355	SER	2.6
1	B	495	SER	2.5
1	A	467	THR	2.5
1	A	492	PRO	2.5
1	B	318	THR	2.5
1	B	435	SER	2.5
1	A	451	ILE	2.5
1	A	76	LEU	2.4
1	B	436	THR	2.4
1	B	164	SER	2.4
1	A	480	TRP	2.4
1	B	466	THR	2.4
1	B	319	GLY	2.4
1	A	229	SER	2.4
1	B	471	ILE	2.4
1	B	516	LYS	2.3
1	B	75	THR	2.3
1	B	386	LEU	2.3
1	B	371	SER	2.3
1	A	491	ASP	2.3
1	B	146	LEU	2.3
1	A	206	ALA	2.2
1	A	498	PRO	2.2
1	A	407	VAL	2.2
1	A	327	LEU	2.2
1	B	110	SER	2.2
1	B	464	ASN	2.2

Continued on next page...

Continued from previous page...

Mol	Chain	Res	Type	RSRZ
1	A	342	GLY	2.1
1	B	200	PHE	2.1
1	B	155	THR	2.1
1	B	467	THR	2.1
1	B	451	ILE	2.1
1	B	117	TRP	2.1
1	B	157	GLY	2.0
1	B	25	PRO	2.0
1	B	411	VAL	2.0
1	B	165	ARG	2.0
1	B	7	GLN	2.0

6.2 Non-standard residues in protein, DNA, RNA chains [i](#)

There are no non-standard protein/DNA/RNA residues in this entry.

6.3 Carbohydrates [i](#)

There are no monosaccharides in this entry.

6.4 Ligands [i](#)

In the following table, the Atoms column lists the number of modelled atoms in the group and the number defined in the chemical component dictionary. The B-factors column lists the minimum, median, 95th percentile and maximum values of B factors of atoms in the group. The column labelled 'Q< 0.9' lists the number of atoms with occupancy less than 0.9.

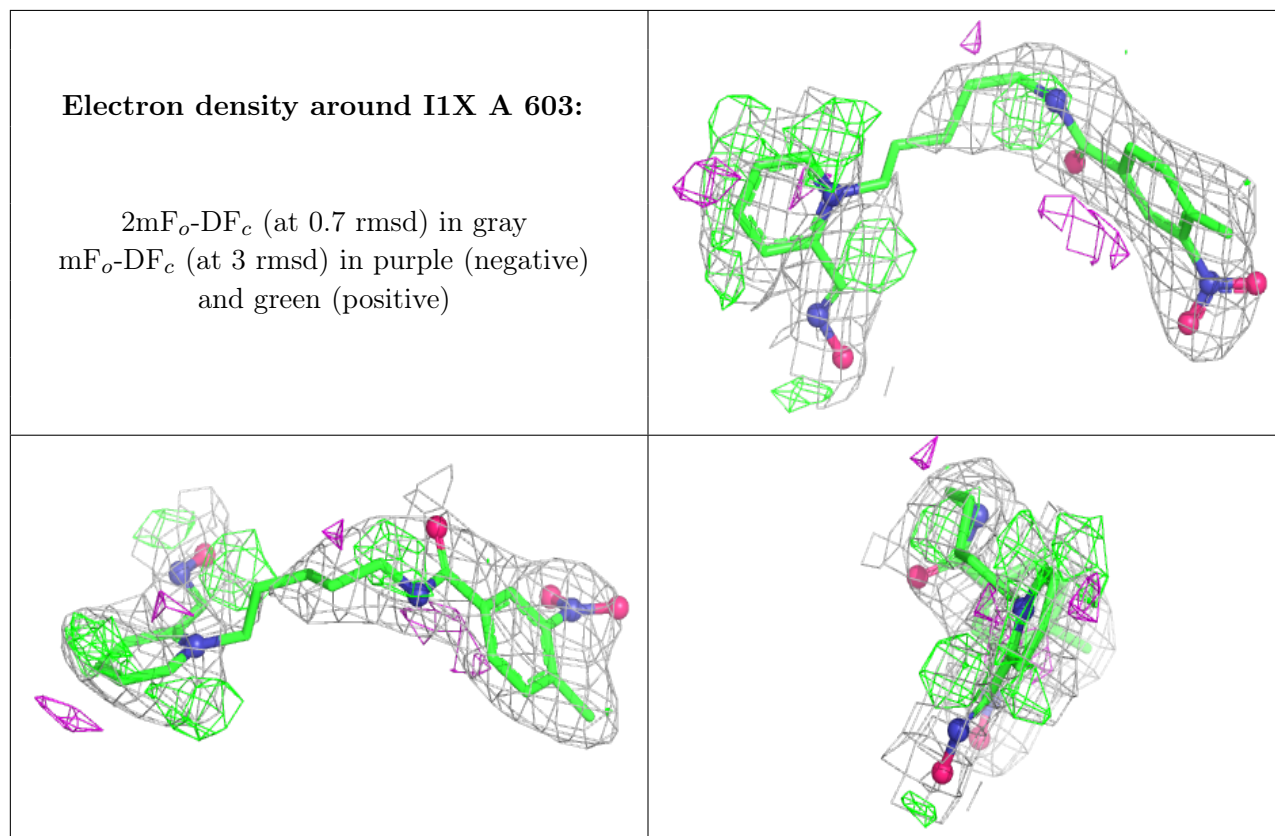
Mol	Type	Chain	Res	Atoms	RSCC	RSR	B-factors(Å ²)	Q<0.9
2	NAG	B	601	14/15	0.50	0.43	67,87,100,101	0
4	PG0	A	610	8/8	0.60	0.43	80,86,93,93	0
2	NAG	A	601	14/15	0.63	0.45	74,87,98,99	0
4	PG0	A	606	8/8	0.69	0.30	76,83,93,95	0
4	PG0	B	607	8/8	0.69	0.45	95,101,105,108	0
5	TOE	B	608	11/11	0.70	0.37	66,79,91,92	0
4	PG0	A	608	8/8	0.71	0.28	75,80,87,91	0
5	TOE	B	609	11/11	0.75	0.23	71,77,84,84	0
2	NAG	B	602	14/15	0.78	0.57	94,109,116,118	0
3	I1X	A	603	27/27	0.78	0.33	49,71,89,93	0
2	NAG	A	602	14/15	0.79	0.40	88,98,110,110	0
4	PG0	B	605	8/8	0.80	0.23	70,73,78,79	0

Continued on next page...

Continued from previous page...

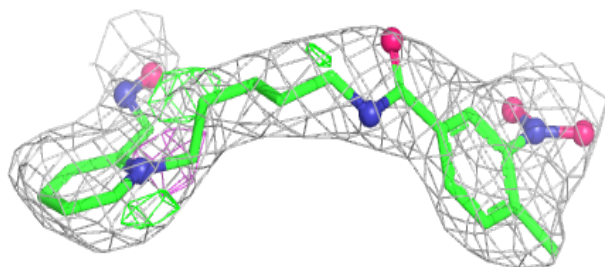
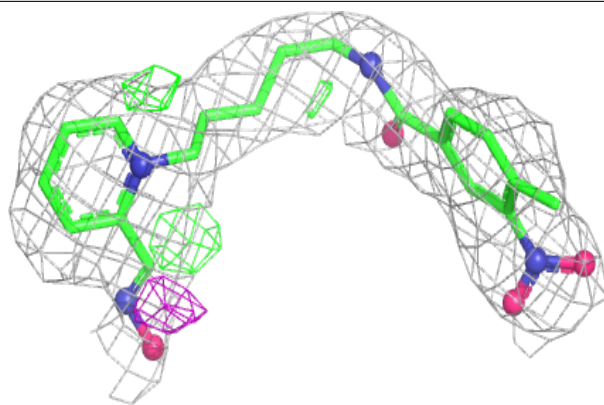
Mol	Type	Chain	Res	Atoms	RSCC	RSR	B-factors(\AA^2)	Q<0.9
4	PG0	A	609	8/8	0.81	0.18	67,74,84,85	0
4	PG0	B	606	8/8	0.83	0.25	72,80,89,92	0
4	PG0	B	604	8/8	0.84	0.21	60,69,80,82	0
3	I1X	B	603	27/27	0.84	0.28	59,75,91,94	0
4	PG0	A	605	8/8	0.85	0.33	74,84,90,90	0
4	PG0	A	607	8/8	0.90	0.23	70,79,82,83	0
4	PG0	A	604	8/8	0.91	0.28	67,72,92,95	0
6	P15	B	610	20/20	0.93	0.28	28,68,89,91	0
7	CL	B	611	1/1	0.95	0.27	31,31,31,31	0

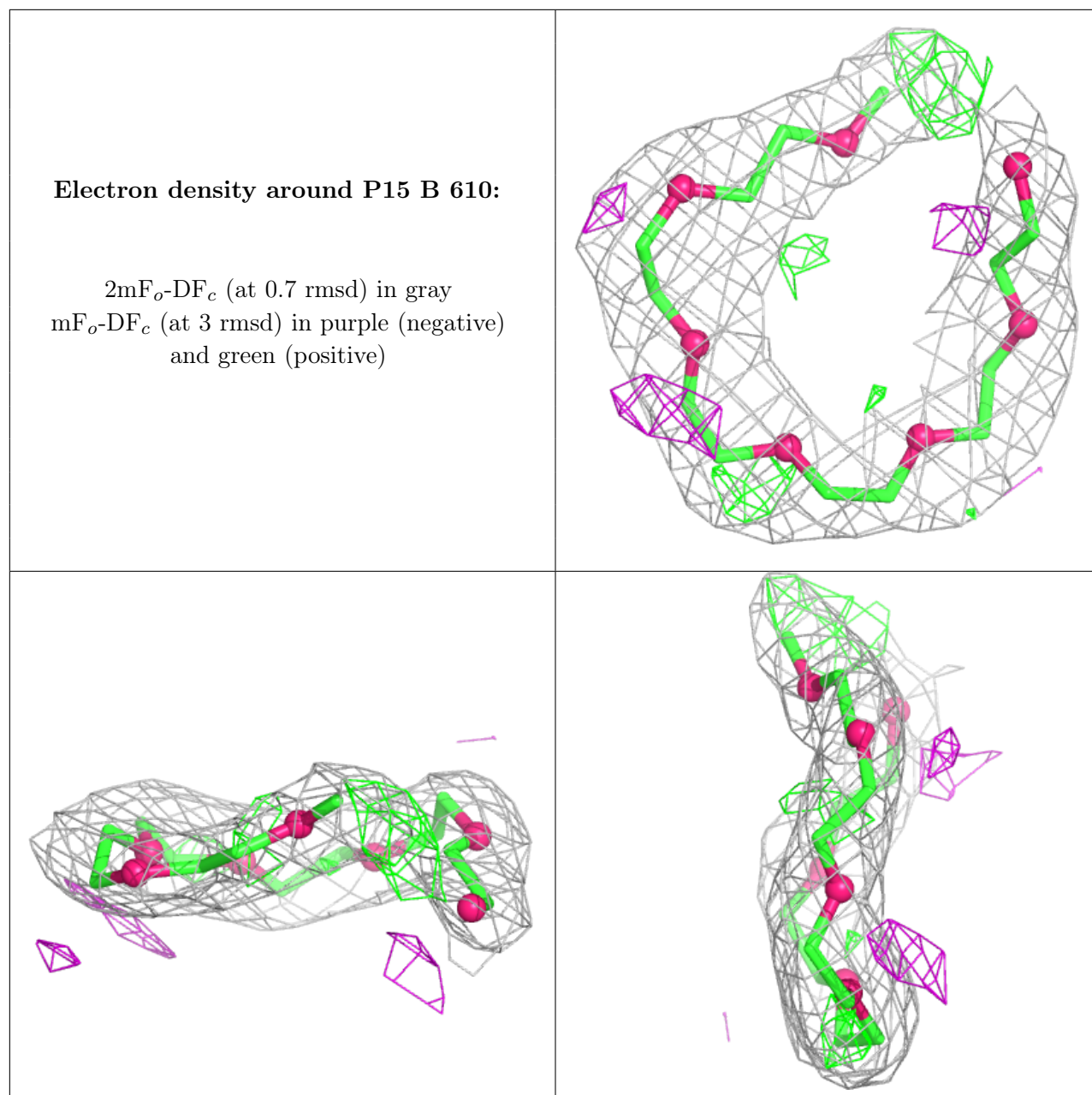
The following is a graphical depiction of the model fit to experimental electron density of all instances of the Ligand of Interest. In addition, ligands with molecular weight > 250 and outliers as shown on the geometry validation Tables will also be included. Each fit is shown from different orientation to approximate a three-dimensional view.



Electron density around I1X B 603:

$2mF_o-DF_c$ (at 0.7 rmsd) in gray
 mF_o-DF_c (at 3 rmsd) in purple (negative)
and green (positive)





6.5 Other polymers [i](#)

There are no such residues in this entry.