



# Full wwPDB X-ray Structure Validation Report ⓘ

Jun 25, 2024 – 02:44 PM EDT

PDB ID : 6QZH  
Title : Structure of the human CC Chemokine Receptor 7 in complex with the intracellular allosteric antagonist Cmp2105 and the insertion protein Sialidase NanA  
Authors : Jaeger, K.; Bruenle, S.; Weinert, T.; Guba, W.; Muehle, J.; Miyazaki, T.; Weber, M.; Furrer, A.; Haenggi, N.; Tetaz, T.; Huang, C.Y.; Mattle, D.; Vonach, J.M.; Gast, A.; Kuglstatter, A.; Rudolph, M.G.; Nogly, P.; Benz, J.; Dawson, R.J.P.; Standfuss, J.  
Deposited on : 2019-03-11  
Resolution : 2.10 Å(reported)

This is a Full wwPDB X-ray Structure Validation Report for a publicly released PDB entry.

We welcome your comments at [validation@mail.wwpdb.org](mailto:validation@mail.wwpdb.org)

A user guide is available at

<https://www.wwpdb.org/validation/2017/XrayValidationReportHelp>

with specific help available everywhere you see the ⓘ symbol.

The types of validation reports are described at

<http://www.wwpdb.org/validation/2017/FAQs#types>.

---

The following versions of software and data (see [references ⓘ](#)) were used in the production of this report:

MolProbity : 4.02b-467  
Mogul : 1.8.5 (274361), CSD as541be (2020)  
Xtriage (Phenix) : 1.13  
EDS : 2.37.1  
buster-report : 1.1.7 (2018)  
Percentile statistics : 20191225.v01 (using entries in the PDB archive December 25th 2019)  
Refmac : 5.8.0158  
CCP4 : 7.0.044 (Gargrove)

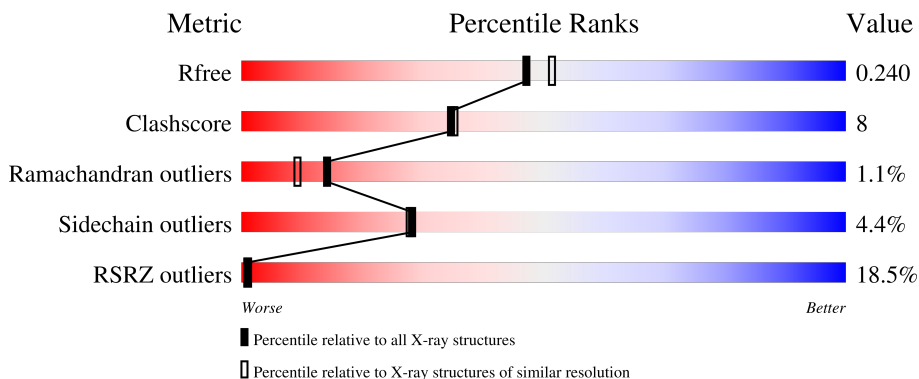
# 1 Overall quality at a glance

The following experimental techniques were used to determine the structure:

*X-RAY DIFFRACTION*

The reported resolution of this entry is 2.10 Å.

Percentile scores (ranging between 0-100) for global validation metrics of the entry are shown in the following graphic. The table shows the number of entries on which the scores are based.



Metric	Whole archive (#Entries)	Similar resolution (#Entries, resolution range(Å))
$R_{free}$	130704	5197 (2.10-2.10)
Clashscore	141614	5710 (2.10-2.10)
Ramachandran outliers	138981	5647 (2.10-2.10)
Sidechain outliers	138945	5648 (2.10-2.10)
RSRZ outliers	127900	5083 (2.10-2.10)

The table below summarises the geometric issues observed across the polymeric chains and their fit to the electron density. The red, orange, yellow and green segments of the lower bar indicate the fraction of residues that contain outliers for  $\geq 3$ , 2, 1 and 0 types of geometric quality criteria respectively. A grey segment represents the fraction of residues that are not modelled. The numeric value for each fraction is indicated below the corresponding segment, with a dot representing fractions  $\leq 5\%$ . The upper red bar (where present) indicates the fraction of residues that have poor fit to the electron density. The numeric value is given above the bar.

Mol	Chain	Length	Quality of chain
1	A	785	

Ideal geometry (proteins) : Engh & Huber (2001)  
 Ideal geometry (DNA, RNA) : Parkinson et al. (1996)  
 Validation Pipeline (wwPDB-VP) : 2.37.1

## 2 Entry composition [i](#)

There are 6 unique types of molecules in this entry. The entry contains 6116 atoms, of which 0 are hydrogens and 0 are deuteriums.

In the tables below, the ZeroOcc column contains the number of atoms modelled with zero occupancy, the AltConf column contains the number of residues with at least one atom in alternate conformation and the Trace column contains the number of residues modelled with at most 2 atoms.

- Molecule 1 is a protein called C-C chemokine receptor type 7,Sialidase A,C-C chemokine receptor type 7.

Mol	Chain	Residues	Atoms					ZeroOcc	AltConf	Trace
			Total	C	N	O	S			
1	A	744	5907	3794	1002	1082	29	0	6	0

There are 27 discrepancies between the modelled and reference sequences:

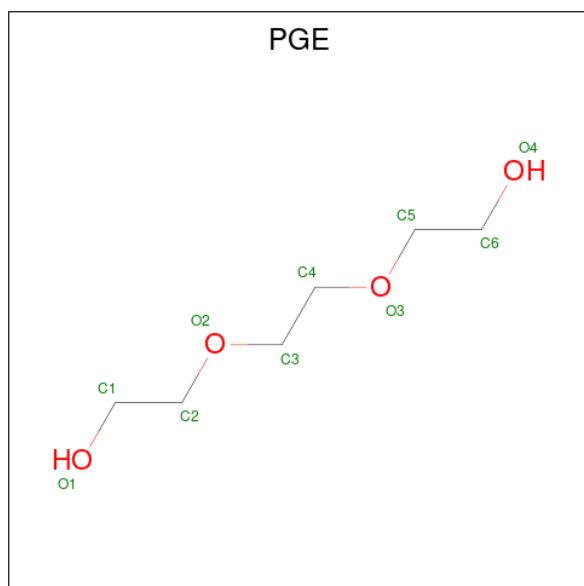
Chain	Residue	Modelled	Actual	Comment	Reference
A	42	GLY	-	expression tag	UNP P32248
A	43	PRO	-	expression tag	UNP P32248
A	44	GLY	-	expression tag	UNP P32248
A	45	SER	-	expression tag	UNP P32248
A	145	TRP	LEU	engineered mutation	UNP P32248
A	248	SER	-	linker	UNP P32248
A	249	LYS	-	linker	UNP P32248
A	250	LEU	-	linker	UNP P32248
A	251	HIS	-	linker	UNP P32248
A	1016	ASN	LYS	conflict	UNP P62575
A	1191	ASP	ASN	conflict	UNP P62575
A	1278	ASP	ASN	conflict	UNP P62575
A	1285	VAL	ILE	conflict	UNP P62575
A	1466	GLU	ASP	conflict	UNP P62575
A	1471	SER	-	linker	UNP P62575
A	1472	LYS	-	linker	UNP P62575
A	255	GLY	-	linker	UNP P62575
A	256	HIS	-	linker	UNP P62575
A	349	GLY	-	expression tag	UNP P32248
A	350	GLY	-	expression tag	UNP P32248
A	351	ARG	-	expression tag	UNP P32248
A	352	LEU	-	expression tag	UNP P32248
A	353	GLU	-	expression tag	UNP P32248
A	354	VAL	-	expression tag	UNP P32248
A	355	LEU	-	expression tag	UNP P32248
A	356	PHE	-	expression tag	UNP P32248

*Continued on next page...*

Continued from previous page...

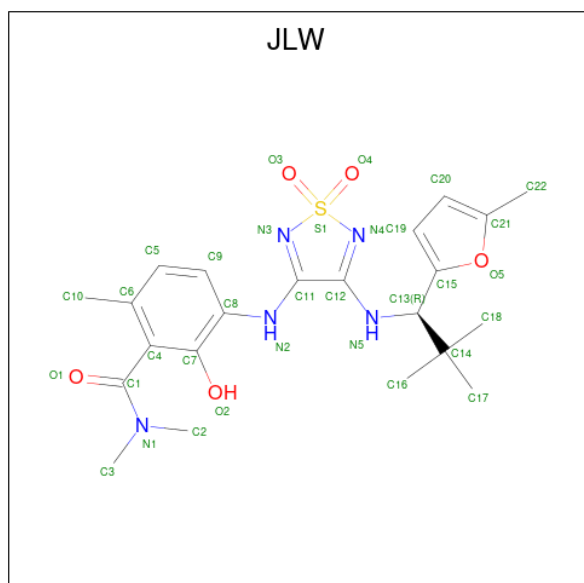
Chain	Residue	Modelled	Actual	Comment	Reference
A	357	GLN	-	expression tag	UNP P32248

- Molecule 2 is TRIETHYLENE GLYCOL (three-letter code: PGE) (formula: C<sub>6</sub>H<sub>14</sub>O<sub>4</sub>).



Mol	Chain	Residues	Atoms		ZeroOcc	AltConf
			Total	C O		
2	A	1	6	4 2	0	0

- Molecule 3 is 3-[[4-[[1 {R}]-2,2-dimethyl-1-(5-methylfuran-2-yl)propyl]amino]-1,1-bis(oxidanylidene)-1,2,5-thiadiazol-3-yl]amino]- {N}, {N},6-trimethyl-2-oxidanyl-benzamide (three-letter code: JLW) (formula: C<sub>22</sub>H<sub>29</sub>N<sub>5</sub>O<sub>5</sub>S).

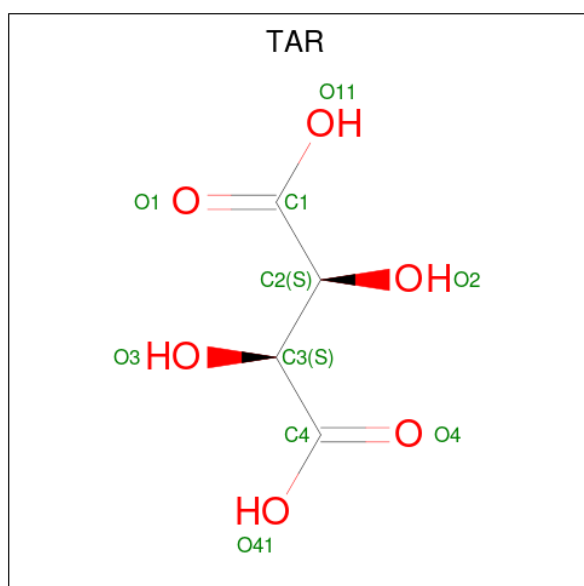


Mol	Chain	Residues	Atoms					ZeroOcc	AltConf
			Total	C	N	O	S		
3	A	1	33	22	5	5	1	0	0

- Molecule 4 is SODIUM ION (three-letter code: NA) (formula: Na).

Mol	Chain	Residues	Atoms		ZeroOcc	AltConf
			Total	Na		
4	A	1	1	1	0	0

- Molecule 5 is D(-)-TARTARIC ACID (three-letter code: TAR) (formula: C<sub>4</sub>H<sub>6</sub>O<sub>6</sub>).



Mol	Chain	Residues	Atoms			ZeroOcc	AltConf
			Total	C	O		
5	A	1	10	4	6	0	0
5	A	1	10	4	6	0	0

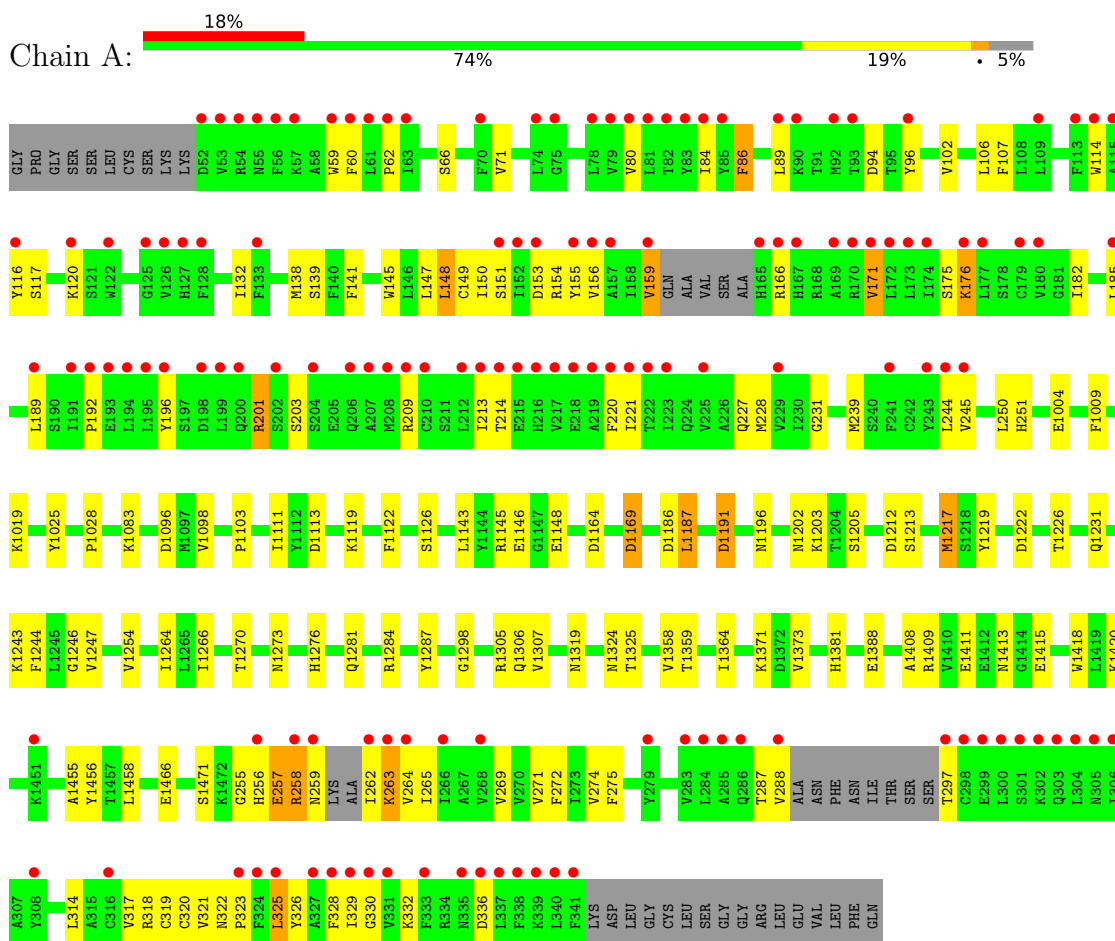
- Molecule 6 is water.

Mol	Chain	Residues	Atoms		ZeroOcc	AltConf
			Total	O		
6	A	149	149	149	0	0

### 3 Residue-property plots

These plots are drawn for all protein, RNA, DNA and oligosaccharide chains in the entry. The first graphic for a chain summarises the proportions of the various outlier classes displayed in the second graphic. The second graphic shows the sequence view annotated by issues in geometry and electron density. Residues are color-coded according to the number of geometric quality criteria for which they contain at least one outlier: green = 0, yellow = 1, orange = 2 and red = 3 or more. A red dot above a residue indicates a poor fit to the electron density ( $RSRZ > 2$ ). Stretches of 2 or more consecutive residues without any outlier are shown as a green connector. Residues present in the sample, but not in the model, are shown in grey.

- Molecule 1: C-C chemokine receptor type 7,Sialidase A,C-C chemokine receptor type 7



## 4 Data and refinement statistics

Property	Value	Source
Space group	P 21 21 2	Depositor
Cell constants a, b, c, $\alpha$ , $\beta$ , $\gamma$	79.12Å 128.81Å 100.58Å 90.00° 90.00° 90.00°	Depositor
Resolution (Å)	54.20 – 2.10 79.27 – 2.12	Depositor EDS
% Data completeness (in resolution range)	52.8 (54.20-2.10) 52.8 (79.27-2.12)	Depositor EDS
$R_{merge}$	(Not available)	Depositor
$R_{sym}$	(Not available)	Depositor
$\langle I/\sigma(I) \rangle$ <sup>1</sup>	1.34 (at 2.12Å)	Xtrriage
Refinement program	PHENIX (1.13_2998: ???)	Depositor
R, $R_{free}$	0.188 , 0.242 0.189 , 0.240	Depositor DCC
$R_{free}$ test set	1994 reflections (6.36%)	wwPDB-VP
Wilson B-factor (Å <sup>2</sup> )	24.5	Xtrriage
Anisotropy	0.129	Xtrriage
Bulk solvent $k_{sol}$ (e/Å <sup>3</sup> ), $B_{sol}$ (Å <sup>2</sup> )	0.31 , 52.4	EDS
L-test for twinning <sup>2</sup>	$\langle  L  \rangle = 0.49$ , $\langle L^2 \rangle = 0.32$	Xtrriage
Estimated twinning fraction	No twinning to report.	Xtrriage
$F_o, F_c$ correlation	0.91	EDS
Total number of atoms	6116	wwPDB-VP
Average B, all atoms (Å <sup>2</sup> )	44.0	wwPDB-VP

Xtrriage's analysis on translational NCS is as follows: *The largest off-origin peak in the Patterson function is 4.55% of the height of the origin peak. No significant pseudotranslation is detected.*

<sup>1</sup>Intensities estimated from amplitudes.

<sup>2</sup>Theoretical values of  $\langle |L| \rangle$ ,  $\langle L^2 \rangle$  for acentric reflections are 0.5, 0.333 respectively for untwinned datasets, and 0.375, 0.2 for perfectly twinned datasets.

## 5 Model quality [i](#)

### 5.1 Standard geometry [i](#)

Bond lengths and bond angles in the following residue types are not validated in this section: PGE, NA, TAR, JLW

The Z score for a bond length (or angle) is the number of standard deviations the observed value is removed from the expected value. A bond length (or angle) with  $|Z| > 5$  is considered an outlier worth inspection. RMSZ is the root-mean-square of all Z scores of the bond lengths (or angles).

Mol	Chain	Bond lengths		Bond angles	
		RMSZ	# Z  >5	RMSZ	# Z  >5
1	A	0.41	0/6057	0.58	0/8205

There are no bond length outliers.

There are no bond angle outliers.

There are no chirality outliers.

There are no planarity outliers.

### 5.2 Too-close contacts [i](#)

In the following table, the Non-H and H(model) columns list the number of non-hydrogen atoms and hydrogen atoms in the chain respectively. The H(added) column lists the number of hydrogen atoms added and optimized by MolProbity. The Clashes column lists the number of clashes within the asymmetric unit, whereas Symm-Clashes lists symmetry-related clashes.

Mol	Chain	Non-H	H(model)	H(added)	Clashes	Symm-Clashes
1	A	5907	0	5878	96	0
2	A	6	0	7	0	0
3	A	33	0	0	2	0
4	A	1	0	0	0	0
5	A	20	0	8	3	0
6	A	149	0	0	5	0
All	All	6116	0	5893	98	0

The all-atom clashscore is defined as the number of clashes found per 1000 atoms (including hydrogen atoms). The all-atom clashscore for this structure is 8.

All (98) close contacts within the same asymmetric unit are listed below, sorted by their clash magnitude.



Atom-1	Atom-2	Interatomic distance (Å)	Clash overlap (Å)
1:A:264:VAL:HG12	1:A:329:ILE:HG12	1.62	0.81
3:A:1502:JLW:O2	6:A:1601:HOH:O	2.07	0.73
1:A:148:LEU:HD23	1:A:239:MET:HG3	1.71	0.72
1:A:1409:ARG:NH2	1:A:1411:GLU:OE2	2.22	0.70
1:A:264:VAL:HG11	1:A:330:GLY:HA2	1.75	0.69
1:A:258:ARG:O	1:A:262:ILE:N	2.25	0.69
1:A:271:VAL:HA	1:A:274:VAL:HG12	1.75	0.68
1:A:189:LEU:HD12	1:A:227:GLN:HA	1.75	0.67
1:A:1028:PRO:HB3	1:A:1458:LEU:HD13	1.78	0.65
1:A:1466[B]:GLU:OE1	1:A:258:ARG:NH1	2.30	0.65
1:A:1191:ASP:OD2	1:A:1191:ASP:N	2.29	0.62
1:A:262:ILE:HG13	1:A:264:VAL:HG13	1.80	0.62
1:A:1305:ARG:HH11	1:A:1364:ILE:HD13	1.66	0.61
1:A:1217:MET:HE1	1:A:1219:TYR:HD2	1.66	0.60
1:A:220:PHE:CE1	1:A:221:ILE:HG13	2.37	0.59
1:A:1187:LEU:HD22	1:A:1205:SER:HB2	1.85	0.58
1:A:262:ILE:HG23	1:A:263:LYS:H	1.69	0.58
1:A:275:PHE:HD2	1:A:318:ARG:HB2	1.69	0.57
1:A:1420:LYS:NZ	5:A:1505:TAR:H3	2.20	0.57
1:A:1307:VAL:HG11	1:A:1319:ASN:HD21	1.70	0.56
1:A:150:ILE:HG21	1:A:265:ILE:HD12	1.88	0.56
1:A:156:VAL:HA	1:A:159:VAL:HG12	1.88	0.55
1:A:96:TYR:CZ	1:A:149:CYS:HB3	2.42	0.55
1:A:62:PRO:O	1:A:66:SER:OG	2.17	0.54
1:A:332:LYS:NZ	1:A:336:ASP:OD1	2.40	0.54
1:A:80:VAL:O	1:A:84:ILE:HG12	2.07	0.54
1:A:117:SER:HB3	1:A:209:ARG:CZ	2.38	0.54
1:A:171:VAL:O	1:A:175:SER:HB3	2.07	0.53
1:A:1371:LYS:NZ	6:A:1603:HOH:O	2.25	0.53
1:A:117:SER:HB3	1:A:209:ARG:NH1	2.23	0.53
1:A:1358:VAL:HG12	1:A:1359:THR:HG23	1.91	0.53
1:A:1307:VAL:HG11	1:A:1319:ASN:ND2	2.24	0.53
1:A:1186:ASP:OD2	1:A:1196:ASN:ND2	2.35	0.52
1:A:250:LEU:HD13	1:A:259:ASN:HB3	1.92	0.51
1:A:1146:GLU:HB2	6:A:1622:HOH:O	2.09	0.51
1:A:147:LEU:HD13	1:A:269:VAL:HG22	1.92	0.51
1:A:1420:LYS:HZ3	5:A:1505:TAR:H3	1.75	0.50
1:A:320:CYS:O	1:A:323:PRO:HD2	2.11	0.50
1:A:201:ARG:HG3	1:A:203:SER:H	1.77	0.50
1:A:107:PHE:HB2	1:A:139:SER:OG	2.12	0.49
1:A:1083:LYS:O	1:A:1202:ASN:ND2	2.35	0.49
1:A:1408:ALA:HB2	1:A:1418:TRP:CE3	2.46	0.49

*Continued on next page...*

*Continued from previous page...*

Atom-1	Atom-2	Interatomic distance (Å)	Clash overlap (Å)
1:A:1111:ILE:HG22	1:A:1247:VAL:HG11	1.95	0.49
1:A:1217:MET:O	1:A:1231[B]:GLN:HG2	2.13	0.48
1:A:1373:VAL:HG22	6:A:1676:HOH:O	2.13	0.48
1:A:274:VAL:HG13	1:A:275:PHE:CD1	2.48	0.48
1:A:196:TYR:CE2	1:A:220:PHE:HB2	2.50	0.47
1:A:96:TYR:HB2	1:A:150:ILE:HD11	1.96	0.47
1:A:1113:ASP:OD1	6:A:1602:HOH:O	2.20	0.47
1:A:155:TYR:HE1	1:A:245:VAL:HG21	1.79	0.47
1:A:1243:LYS:HD3	1:A:1276:HIS:ND1	2.30	0.46
1:A:255:GLY:O	1:A:257:GLU:N	2.49	0.46
1:A:326:TYR:O	1:A:330:GLY:HA3	2.16	0.46
1:A:1212:ASP:CG	1:A:1213:SER:H	2.20	0.45
1:A:251:HIS:CE1	1:A:1004:GLU:HG3	2.51	0.45
1:A:86:PHE:CE2	1:A:336:ASP:HB3	2.51	0.45
1:A:94:ASP:OD1	3:A:1502:JLW:N5	2.49	0.45
1:A:1103:PRO:HD3	1:A:1254:VAL:HG21	1.98	0.45
1:A:1455:ALA:HA	1:A:1456:TYR:HA	1.67	0.45
1:A:1305:ARG:HD2	1:A:1364:ILE:HD13	1.99	0.45
5:A:1504:TAR:O41	5:A:1504:TAR:O2	2.32	0.45
1:A:1009:PHE:HB3	1:A:1025:TYR:CG	2.52	0.45
1:A:1254:VAL:HG22	1:A:1264:ILE:HG12	1.99	0.44
1:A:1264:ILE:O	1:A:1287:TYR:HA	2.18	0.44
1:A:102:VAL:O	1:A:106:LEU:HG	2.17	0.44
1:A:71:VAL:HG12	1:A:320:CYS:HB3	2.00	0.44
1:A:1273:ASN:O	1:A:1273:ASN:ND2	2.50	0.44
1:A:314:LEU:HA	1:A:317:VAL:HG12	2.00	0.44
1:A:114:TRP:CZ2	1:A:132:ILE:HD11	2.53	0.43
1:A:59:TRP:HA	1:A:62:PRO:HG2	2.01	0.43
1:A:287:THR:OG1	1:A:288:VAL:N	2.52	0.43
1:A:272:PHE:HA	1:A:318:ARG:CD	2.48	0.43
1:A:96:TYR:CE2	1:A:149:CYS:HB3	2.54	0.43
1:A:1381:HIS:HE1	1:A:1388:GLU:OE1	2.02	0.43
1:A:1098:VAL:HG11	1:A:1266:ILE:HG23	2.00	0.43
1:A:1281:GLN:HB3	1:A:1325:THR:HG22	2.00	0.42
1:A:141:PHE:CD1	1:A:231:GLY:HA3	2.55	0.42
1:A:1222:ASP:OD1	1:A:1226:THR:OG1	2.36	0.42
1:A:1284:ARG:NH1	1:A:1298:GLY:O	2.52	0.42
1:A:272:PHE:HA	1:A:318:ARG:HD2	2.00	0.42
1:A:1143:LEU:HD23	1:A:1143:LEU:HA	1.84	0.42
1:A:1119:LYS:HB3	1:A:1122:PHE:HB2	2.01	0.42
1:A:145:TRP:HB3	1:A:182:ILE:HG12	2.02	0.42

*Continued on next page...*

Continued from previous page...

Atom-1	Atom-2	Interatomic distance (Å)	Clash overlap (Å)
1:A:192:PRO:HB2	1:A:227:GLN:NE2	2.34	0.42
1:A:153:ASP:OD2	1:A:154:ARG:NE	2.44	0.42
1:A:1270:THR:O	1:A:1281:GLN:HA	2.19	0.42
1:A:257:GLU:HB3	1:A:258:ARG:H	1.52	0.42
1:A:176:LYS:HA	1:A:176:LYS:HD2	1.80	0.41
1:A:1145:ARG:HD3	1:A:1148:GLU:OE2	2.20	0.41
1:A:107:PHE:HD2	1:A:319:CYS:HG	1.68	0.41
1:A:148:LEU:HD22	1:A:148:LEU:O	2.21	0.41
1:A:1244:PHE:CZ	1:A:1246:GLY:HA3	2.56	0.41
1:A:264:VAL:HA	1:A:329:ILE:HD13	2.03	0.41
1:A:321:VAL:O	1:A:325:LEU:HD22	2.20	0.41
1:A:1413:ASN:OD1	1:A:1415:GLU:HB2	2.22	0.40
1:A:196:TYR:HD1	1:A:213:ILE:HD11	1.87	0.40
1:A:1203:LYS:HB3	1:A:1203:LYS:HE3	1.88	0.40

There are no symmetry-related clashes.

## 5.3 Torsion angles [i](#)

### 5.3.1 Protein backbone [i](#)

In the following table, the Percentiles column shows the percent Ramachandran outliers of the chain as a percentile score with respect to all X-ray entries followed by that with respect to entries of similar resolution.

The Analysed column shows the number of residues for which the backbone conformation was analysed, and the total number of residues.

Mol	Chain	Analysed	Favoured	Allowed	Outliers	Percentiles
1	A	742/785 (94%)	682 (92%)	52 (7%)	8 (1%)	<b>14</b>   <b>9</b>

All (8) Ramachandran outliers are listed below:

Mol	Chain	Res	Type
1	A	86	PHE
1	A	256	HIS
1	A	258	ARG
1	A	214	THR
1	A	1019	LYS
1	A	257	GLU
1	A	328	PHE

Continued on next page...

*Continued from previous page...*

Mol	Chain	Res	Type
1	A	1096	ASP

### 5.3.2 Protein sidechains [i](#)

In the following table, the Percentiles column shows the percent sidechain outliers of the chain as a percentile score with respect to all X-ray entries followed by that with respect to entries of similar resolution.

The Analysed column shows the number of residues for which the sidechain conformation was analysed, and the total number of residues.

Mol	Chain	Analysed	Rotameric	Outliers	Percentiles
1	A	639/679 (94%)	610 (96%)	29 (4%)	27 27

All (29) residues with a non-rotameric sidechain are listed below:

Mol	Chain	Res	Type
1	A	60	PHE
1	A	89	LEU
1	A	116	TYR
1	A	120	LYS
1	A	138	MET
1	A	148	LEU
1	A	151	SER
1	A	159	VAL
1	A	166	ARG
1	A	171	VAL
1	A	176	LYS
1	A	185	LEU
1	A	201	ARG
1	A	228	MET
1	A	244	LEU
1	A	1126	SER
1	A	1164	ASP
1	A	1169[A]	ASP
1	A	1169[B]	ASP
1	A	1187	LEU
1	A	1191	ASP
1	A	1217	MET
1	A	1306	GLN
1	A	1324	ASN
1	A	1471	SER

*Continued on next page...*

*Continued from previous page...*

Mol	Chain	Res	Type
1	A	263	LYS
1	A	297	THR
1	A	322	ASN
1	A	325	LEU

Sometimes sidechains can be flipped to improve hydrogen bonding and reduce clashes. All (6) such sidechains are listed below:

Mol	Chain	Res	Type
1	A	1192	GLN
1	A	1302	ASN
1	A	1306	GLN
1	A	1381	HIS
1	A	280	ASN
1	A	322	ASN

### 5.3.3 RNA [i](#)

There are no RNA molecules in this entry.

## 5.4 Non-standard residues in protein, DNA, RNA chains [i](#)

There are no non-standard protein/DNA/RNA residues in this entry.

## 5.5 Carbohydrates [i](#)

There are no monosaccharides in this entry.

## 5.6 Ligand geometry [i](#)

Of 5 ligands modelled in this entry, 1 is monoatomic - leaving 4 for Mogul analysis.

In the following table, the Counts columns list the number of bonds (or angles) for which Mogul statistics could be retrieved, the number of bonds (or angles) that are observed in the model and the number of bonds (or angles) that are defined in the Chemical Component Dictionary. The Link column lists molecule types, if any, to which the group is linked. The Z score for a bond length (or angle) is the number of standard deviations the observed value is removed from the expected value. A bond length (or angle) with  $|Z| > 2$  is considered an outlier worth inspection. RMSZ is the root-mean-square of all Z scores of the bond lengths (or angles).

Mol	Type	Chain	Res	Link	Bond lengths			Bond angles		
					Counts	RMSZ	# Z  > 2	Counts	RMSZ	# Z  > 2
3	JLW	A	1502	-	30,35,35	0.92	2 (6%)	41,54,54	0.99	4 (9%)
5	TAR	A	1505	-	9,9,9	1.11	0	12,12,12	1.28	2 (16%)
5	TAR	A	1504	-	9,9,9	1.06	0	12,12,12	1.44	3 (25%)
2	PGE	A	1501	-	5,5,9	0.43	0	4,4,8	0.23	0

In the following table, the Chirals column lists the number of chiral outliers, the number of chiral centers analysed, the number of these observed in the model and the number defined in the Chemical Component Dictionary. Similar counts are reported in the Torsion and Rings columns. '-' means no outliers of that kind were identified.

Mol	Type	Chain	Res	Link	Chirals	Torsions	Rings
3	JLW	A	1502	-	-	0/22/40/40	0/3/3/3
5	TAR	A	1505	-	-	2/12/12/12	-
5	TAR	A	1504	-	-	4/12/12/12	-
2	PGE	A	1501	-	-	1/3/3/7	-

All (2) bond length outliers are listed below:

Mol	Chain	Res	Type	Atoms	Z	Observed(Å)	Ideal(Å)
3	A	1502	JLW	C20-C21	-3.53	1.34	1.39
3	A	1502	JLW	C19-C15	-3.40	1.34	1.39

All (9) bond angle outliers are listed below:

Mol	Chain	Res	Type	Atoms	Z	Observed(°)	Ideal(°)
3	A	1502	JLW	C22-C21-C20	3.98	134.26	128.25
5	A	1504	TAR	O11-C1-C2	2.77	120.75	113.27
5	A	1505	TAR	O11-C1-C2	2.65	120.43	113.27
3	A	1502	JLW	N5-C12-N4	-2.55	120.67	123.62
3	A	1502	JLW	C12-C11-N3	2.39	116.63	110.42
3	A	1502	JLW	C9-C8-C7	-2.37	118.25	119.79
5	A	1504	TAR	O41-C4-O4	-2.29	118.90	124.09
5	A	1505	TAR	O11-C1-O1	-2.20	119.08	124.09
5	A	1504	TAR	O41-C4-C3	2.20	119.21	113.27

There are no chirality outliers.

All (7) torsion outliers are listed below:

Mol	Chain	Res	Type	Atoms
5	A	1504	TAR	O1-C1-C2-O2

*Continued on next page...*

*Continued from previous page...*

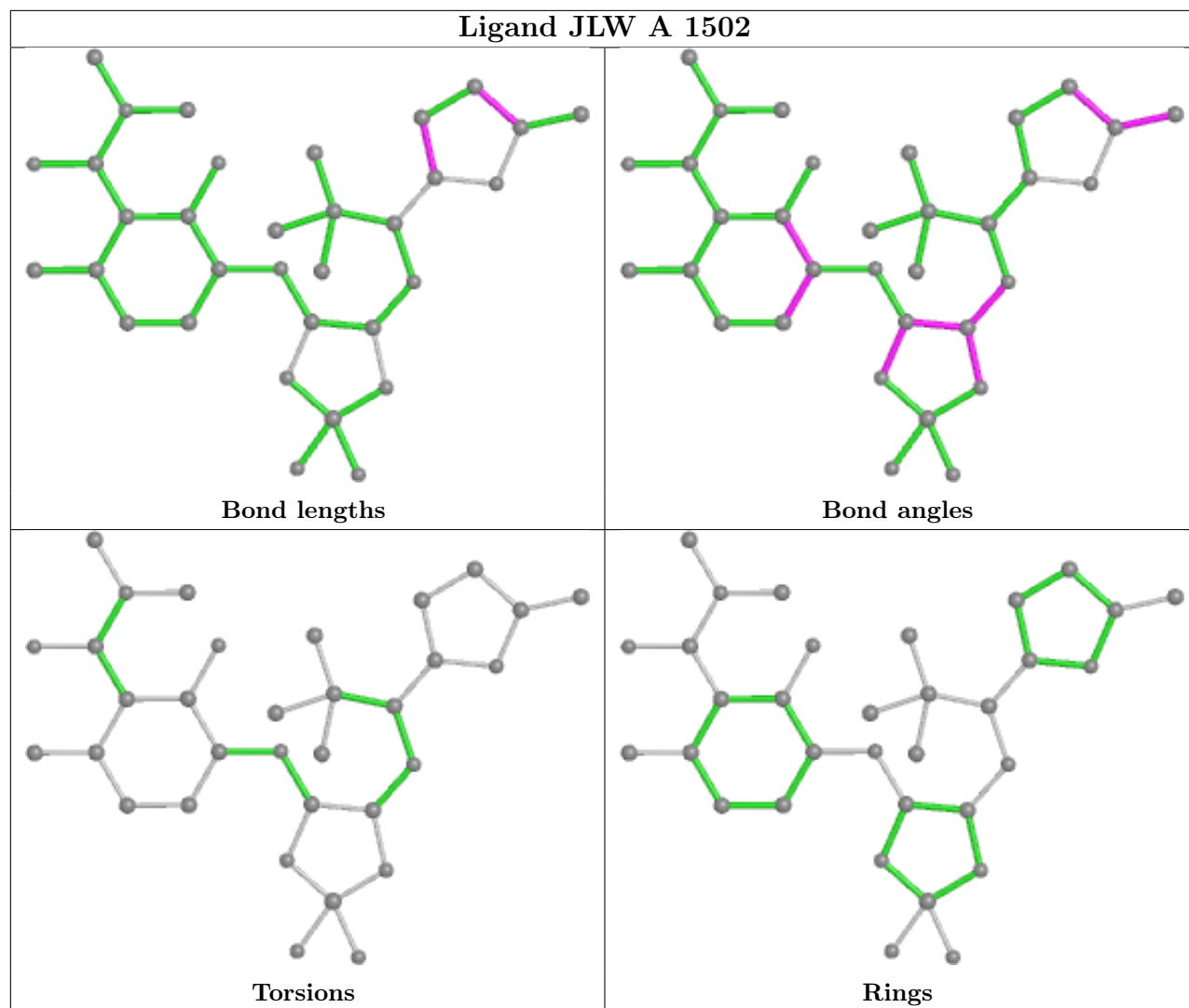
Mol	Chain	Res	Type	Atoms
5	A	1504	TAR	O11-C1-C2-O2
5	A	1504	TAR	O3-C3-C4-O4
5	A	1504	TAR	O3-C3-C4-O41
5	A	1505	TAR	O3-C3-C4-O4
5	A	1505	TAR	O3-C3-C4-O41
2	A	1501	PGE	O1-C1-C2-O2

There are no ring outliers.

3 monomers are involved in 5 short contacts:

Mol	Chain	Res	Type	Clashes	Symm-Clashes
3	A	1502	JLW	2	0
5	A	1505	TAR	2	0
5	A	1504	TAR	1	0

The following is a two-dimensional graphical depiction of Mogul quality analysis of bond lengths, bond angles, torsion angles, and ring geometry for all instances of the Ligand of Interest. In addition, ligands with molecular weight > 250 and outliers as shown on the validation Tables will also be included. For torsion angles, if less than 5% of the Mogul distribution of torsion angles is within 10 degrees of the torsion angle in question, then that torsion angle is considered an outlier. Any bond that is central to one or more torsion angles identified as an outlier by Mogul will be highlighted in the graph. For rings, the root-mean-square deviation (RMSD) between the ring in question and similar rings identified by Mogul is calculated over all ring torsion angles. If the average RMSD is greater than 60 degrees and the minimal RMSD between the ring in question and any Mogul-identified rings is also greater than 60 degrees, then that ring is considered an outlier. The outliers are highlighted in purple. The color gray indicates Mogul did not find sufficient equivalents in the CSD to analyse the geometry.



## 5.7 Other polymers [\(i\)](#)

There are no such residues in this entry.

## 5.8 Polymer linkage issues [\(i\)](#)

There are no chain breaks in this entry.



## 6 Fit of model and data

### 6.1 Protein, DNA and RNA chains

In the following table, the column labelled ‘#RSRZ> 2’ contains the number (and percentage) of RSRZ outliers, followed by percent RSRZ outliers for the chain as percentile scores relative to all X-ray entries and entries of similar resolution. The OWAB column contains the minimum, median, 95<sup>th</sup> percentile and maximum values of the occupancy-weighted average B-factor per residue. The column labelled ‘Q< 0.9’ lists the number of (and percentage) of residues with an average occupancy less than 0.9.

Mol	Chain	Analysed	<RSRZ>	#RSRZ>2	OWAB(Å <sup>2</sup> )	Q<0.9
1	A	744/785 (94%)	0.72	138 (18%) <b>1</b> <b>1</b>	8, 26, 101, 142	1 (0%)

All (138) RSRZ outliers are listed below:

Mol	Chain	Res	Type	RSRZ
1	A	298	CYS	10.7
1	A	288	VAL	10.1
1	A	169	ALA	9.5
1	A	196	TYR	8.9
1	A	59	TRP	8.9
1	A	116	TYR	8.8
1	A	165	HIS	8.1
1	A	217	VAL	7.8
1	A	223	ILE	7.8
1	A	333	PHE	7.5
1	A	195	LEU	7.1
1	A	174	ILE	7.0
1	A	81	LEU	6.9
1	A	213	ILE	6.9
1	A	331	VAL	6.8
1	A	302	LYS	6.8
1	A	337	LEU	6.7
1	A	89	LEU	6.6
1	A	214	THR	6.6
1	A	85	TYR	6.4
1	A	222	THR	6.4
1	A	215	GLU	6.3
1	A	338	PHE	6.3
1	A	173	LEU	6.2
1	A	300	LEU	6.2
1	A	212	LEU	6.1
1	A	152	ILE	6.0

*Continued on next page...*

*Continued from previous page...*

<b>Mol</b>	<b>Chain</b>	<b>Res</b>	<b>Type</b>	<b>RSRZ</b>
1	A	299	GLU	5.9
1	A	159	VAL	5.9
1	A	60	PHE	5.8
1	A	219	ALA	5.6
1	A	53	VAL	5.5
1	A	264	VAL	5.4
1	A	285	ALA	5.4
1	A	218	GLU	5.4
1	A	225	VAL	5.2
1	A	194	LEU	5.2
1	A	113	PHE	5.2
1	A	79	VAL	5.0
1	A	328	PHE	5.0
1	A	207	ALA	4.9
1	A	229	VAL	4.9
1	A	128	PHE	4.8
1	A	220	PHE	4.8
1	A	340	LEU	4.7
1	A	126	VAL	4.7
1	A	339	LYS	4.7
1	A	243	TYR	4.7
1	A	62	PRO	4.6
1	A	262	ILE	4.6
1	A	198	ASP	4.5
1	A	306	ILE	4.4
1	A	216	HIS	4.4
1	A	221	ILE	4.3
1	A	329	ILE	4.3
1	A	202	SER	4.3
1	A	176	LYS	4.3
1	A	341	PHE	4.3
1	A	56	PHE	4.2
1	A	305	ASN	4.2
1	A	286	GLN	4.2
1	A	327	ALA	4.1
1	A	172	LEU	4.0
1	A	120	LYS	4.0
1	A	241	PHE	4.0
1	A	336	ASP	3.9
1	A	70	PHE	3.9
1	A	156	VAL	3.9
1	A	335	ASN	3.9

*Continued on next page...*

*Continued from previous page...*

<b>Mol</b>	<b>Chain</b>	<b>Res</b>	<b>Type</b>	<b>RSRZ</b>
1	A	57	LYS	3.8
1	A	83	TYR	3.8
1	A	170	ARG	3.7
1	A	304	LEU	3.7
1	A	308	TYR	3.6
1	A	268	VAL	3.6
1	A	210	CYS	3.6
1	A	157	ALA	3.6
1	A	84	ILE	3.5
1	A	185	LEU	3.5
1	A	127	HIS	3.5
1	A	209	ARG	3.5
1	A	191	ILE	3.5
1	A	301	SER	3.5
1	A	166	ARG	3.5
1	A	96	TYR	3.5
1	A	74	LEU	3.4
1	A	109	LEU	3.4
1	A	177	LEU	3.4
1	A	192	PRO	3.4
1	A	90	LYS	3.3
1	A	189	LEU	3.3
1	A	93	THR	3.3
1	A	179	CYS	3.3
1	A	256	HIS	3.2
1	A	244	LEU	3.2
1	A	193	GLU	3.1
1	A	80	VAL	3.1
1	A	206	GLN	3.1
1	A	259	ASN	3.1
1	A	316	CYS	3.0
1	A	151	SER	2.9
1	A	199	LEU	2.9
1	A	133	PHE	2.9
1	A	325	LEU	2.9
1	A	180	VAL	2.8
1	A	266	ILE	2.8
1	A	167	HIS	2.8
1	A	323	PRO	2.7
1	A	330	GLY	2.7
1	A	92	MET	2.7
1	A	279	TYR	2.7

*Continued on next page...*

*Continued from previous page...*

Mol	Chain	Res	Type	RSRZ
1	A	155	TYR	2.6
1	A	283	VAL	2.6
1	A	153	ASP	2.6
1	A	200	GLN	2.6
1	A	63	ILE	2.6
1	A	55	ASN	2.6
1	A	297	THR	2.6
1	A	204	SER	2.5
1	A	78	LEU	2.5
1	A	75	GLY	2.4
1	A	54	ARG	2.4
1	A	303	GLN	2.4
1	A	1451	LYS	2.3
1	A	208	MET	2.3
1	A	245	VAL	2.2
1	A	284	LEU	2.2
1	A	258	ARG	2.2
1	A	125	GLY	2.2
1	A	324	PHE	2.2
1	A	122	TRP	2.2
1	A	263	LYS	2.2
1	A	52	ASP	2.1
1	A	115	ALA	2.1
1	A	61	LEU	2.1
1	A	82	THR	2.1
1	A	171	VAL	2.1
1	A	114	TRP	2.1

## 6.2 Non-standard residues in protein, DNA, RNA chains [i](#)

There are no non-standard protein/DNA/RNA residues in this entry.

## 6.3 Carbohydrates [i](#)

There are no monosaccharides in this entry.

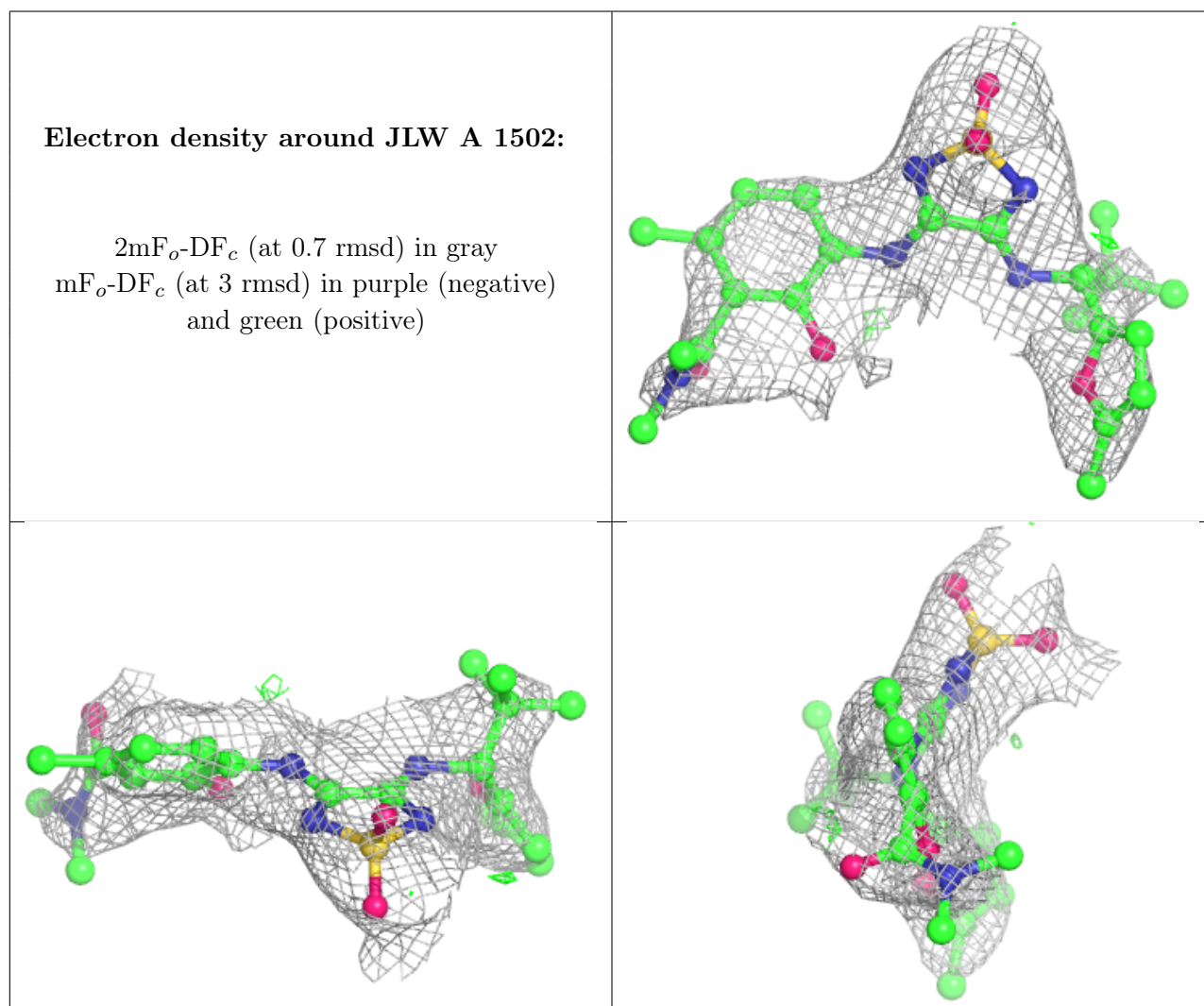
## 6.4 Ligands [i](#)

In the following table, the Atoms column lists the number of modelled atoms in the group and the number defined in the chemical component dictionary. The B-factors column lists the minimum,

median, 95<sup>th</sup> percentile and maximum values of B factors of atoms in the group. The column labelled 'Q< 0.9' lists the number of atoms with occupancy less than 0.9.

Mol	Type	Chain	Res	Atoms	RSCC	RSR	B-factors(Å <sup>2</sup> )	Q<0.9
4	NA	A	1503	1/1	0.18	0.10	80,80,80,80	0
5	TAR	A	1505	10/10	0.91	0.09	31,50,65,70	0
3	JLW	A	1502	33/33	0.92	0.24	76,85,92,98	0
5	TAR	A	1504	10/10	0.93	0.15	33,41,59,65	0
2	PGE	A	1501	6/10	0.96	0.12	20,23,30,38	0

The following is a graphical depiction of the model fit to experimental electron density of all instances of the Ligand of Interest. In addition, ligands with molecular weight > 250 and outliers as shown on the geometry validation Tables will also be included. Each fit is shown from different orientation to approximate a three-dimensional view.



## 6.5 Other polymers [i](#)

There are no such residues in this entry.