



## Full wwPDB EM Validation Report ⓘ

Mar 10, 2022 – 01:23 am GMT

PDB ID : 7R15  
EMDB ID : EMD-14231  
Title : Alpha Variant SARS-CoV-2 Spike with 2 Erect RBDs  
Authors : Benton, D.J.; Wrobel, A.G.; Gamblin, S.J.  
Deposited on : 2022-02-02  
Resolution : 4.10 Å (reported)

This is a Full wwPDB EM Validation Report for a publicly released PDB entry.

We welcome your comments at [validation@mail.wwpdb.org](mailto:validation@mail.wwpdb.org)

A user guide is available at

<https://www.wwpdb.org/validation/2017/EMValidationReportHelp>

with specific help available everywhere you see the ⓘ symbol.

---

The following versions of software and data (see [references ⓘ](#)) were used in the production of this report:

EMDB validation analysis : 0.0.0.dev97  
Mogul : 1.8.4, CSD as541be (2020)  
MolProbity : 4.02b-467  
Percentile statistics : 20191225.v01 (using entries in the PDB archive December 25th 2019)  
Ideal geometry (proteins) : Engh & Huber (2001)  
Ideal geometry (DNA, RNA) : Parkinson et al. (1996)  
Validation Pipeline (wwPDB-VP) : 2.27

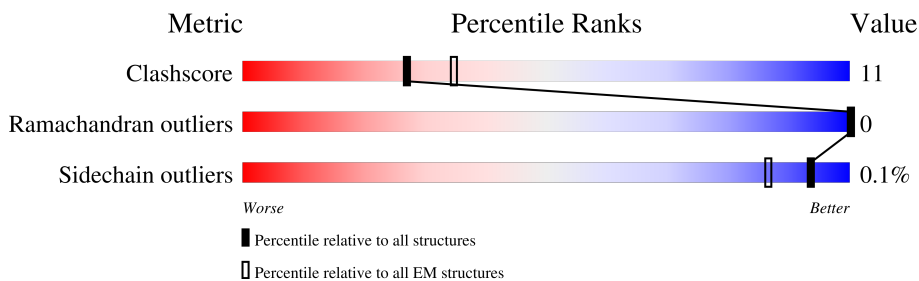
# 1 Overall quality at a glance

The following experimental techniques were used to determine the structure:

*ELECTRON MICROSCOPY*

The reported resolution of this entry is 4.10 Å.

Percentile scores (ranging between 0-100) for global validation metrics of the entry are shown in the following graphic. The table shows the number of entries on which the scores are based.



Metric	Whole archive (#Entries)	EM structures (#Entries)
Clashscore	158937	4297
Ramachandran outliers	154571	4023
Sidechain outliers	154315	3826

The table below summarises the geometric issues observed across the polymeric chains and their fit to the map. The red, orange, yellow and green segments of the bar indicate the fraction of residues that contain outliers for  $\geq 3$ , 2, 1 and 0 types of geometric quality criteria respectively. A grey segment represents the fraction of residues that are not modelled. The numeric value for each fraction is indicated below the corresponding segment, with a dot representing fractions  $\leq 5\%$ . The upper red bar (where present) indicates the fraction of residues that have poor fit to the EM map (all-atom inclusion  $< 40\%$ ). The numeric value is given above the bar.

Mol	Chain	Length	Quality of chain
1	A	1284	
1	B	1284	
1	C	1284	
2	D	2	
2	E	2	
2	F	2	

## 2 Entry composition i

There are 3 unique types of molecules in this entry. The entry contains 24100 atoms, of which 0 are hydrogens and 0 are deuteriums.

In the tables below, the AltConf column contains the number of residues with at least one atom in alternate conformation and the Trace column contains the number of residues modelled with at most 2 atoms.

- Molecule 1 is a protein called Spike glycoprotein.

Mol	Chain	Residues	Atoms					AltConf	Trace
			Total	C	N	O	S		
1	A	983	7702	4930	1280	1459	33	0	0
1	B	1020	7988	5106	1331	1515	36	0	0
1	C	997	7808	4997	1296	1480	35	0	0

There are 249 discrepancies between the modelled and reference sequences:

Chain	Residue	Modelled	Actual	Comment	Reference
A	-30	MET	-	initiating methionine	UNP A0A7T8R415
A	-29	GLY	-	expression tag	UNP A0A7T8R415
A	-28	ILE	-	expression tag	UNP A0A7T8R415
A	-27	LEU	-	expression tag	UNP A0A7T8R415
A	-26	PRO	-	expression tag	UNP A0A7T8R415
A	-25	SER	-	expression tag	UNP A0A7T8R415
A	-24	PRO	-	expression tag	UNP A0A7T8R415
A	-23	GLY	-	expression tag	UNP A0A7T8R415
A	-22	MET	-	expression tag	UNP A0A7T8R415
A	-21	PRO	-	expression tag	UNP A0A7T8R415
A	-20	ALA	-	expression tag	UNP A0A7T8R415
A	-19	LEU	-	expression tag	UNP A0A7T8R415
A	-18	LEU	-	expression tag	UNP A0A7T8R415
A	-17	SER	-	expression tag	UNP A0A7T8R415
A	-16	LEU	-	expression tag	UNP A0A7T8R415
A	-15	VAL	-	expression tag	UNP A0A7T8R415
A	-14	SER	-	expression tag	UNP A0A7T8R415
A	-13	LEU	-	expression tag	UNP A0A7T8R415
A	-12	LEU	-	expression tag	UNP A0A7T8R415
A	-11	SER	-	expression tag	UNP A0A7T8R415
A	-10	VAL	-	expression tag	UNP A0A7T8R415
A	-9	LEU	-	expression tag	UNP A0A7T8R415
A	-8	LEU	-	expression tag	UNP A0A7T8R415
A	-7	MET	-	expression tag	UNP A0A7T8R415

*Continued on next page...*

*Continued from previous page...*

Chain	Residue	Modelled	Actual	Comment	Reference
A	-6	GLY	-	expression tag	UNP A0A7T8R415
A	-5	CYS	-	expression tag	UNP A0A7T8R415
A	-4	VAL	-	expression tag	UNP A0A7T8R415
A	-3	ALA	-	expression tag	UNP A0A7T8R415
A	-2	GLU	-	expression tag	UNP A0A7T8R415
A	-1	THR	-	expression tag	UNP A0A7T8R415
A	0	GLY	-	expression tag	UNP A0A7T8R415
A	682	SER	ARG	variant	UNP A0A7T8R415
A	685	SER	ARG	variant	UNP A0A7T8R415
A	986	PRO	LYS	variant	UNP A0A7T8R415
A	987	PRO	VAL	variant	UNP A0A7T8R415
A	1209	SER	-	expression tag	UNP A0A7T8R415
A	1210	GLY	-	expression tag	UNP A0A7T8R415
A	1211	ARG	-	expression tag	UNP A0A7T8R415
A	1212	GLU	-	expression tag	UNP A0A7T8R415
A	1213	ASN	-	expression tag	UNP A0A7T8R415
A	1214	LEU	-	expression tag	UNP A0A7T8R415
A	1215	TYR	-	expression tag	UNP A0A7T8R415
A	1216	PHE	-	expression tag	UNP A0A7T8R415
A	1217	GLN	-	expression tag	UNP A0A7T8R415
A	1218	GLY	-	expression tag	UNP A0A7T8R415
A	1219	GLY	-	expression tag	UNP A0A7T8R415
A	1220	GLY	-	expression tag	UNP A0A7T8R415
A	1221	GLY	-	expression tag	UNP A0A7T8R415
A	1222	SER	-	expression tag	UNP A0A7T8R415
A	1223	GLY	-	expression tag	UNP A0A7T8R415
A	1224	TYR	-	expression tag	UNP A0A7T8R415
A	1225	ILE	-	expression tag	UNP A0A7T8R415
A	1226	PRO	-	expression tag	UNP A0A7T8R415
A	1227	GLU	-	expression tag	UNP A0A7T8R415
A	1228	ALA	-	expression tag	UNP A0A7T8R415
A	1229	PRO	-	expression tag	UNP A0A7T8R415
A	1230	ARG	-	expression tag	UNP A0A7T8R415
A	1231	ASP	-	expression tag	UNP A0A7T8R415
A	1232	GLY	-	expression tag	UNP A0A7T8R415
A	1233	GLN	-	expression tag	UNP A0A7T8R415
A	1234	ALA	-	expression tag	UNP A0A7T8R415
A	1235	TYR	-	expression tag	UNP A0A7T8R415
A	1236	VAL	-	expression tag	UNP A0A7T8R415
A	1237	ARG	-	expression tag	UNP A0A7T8R415
A	1238	LYS	-	expression tag	UNP A0A7T8R415
A	1239	ASP	-	expression tag	UNP A0A7T8R415

*Continued on next page...*

*Continued from previous page...*

Chain	Residue	Modelled	Actual	Comment	Reference
A	1240	GLY	-	expression tag	UNP A0A7T8R415
A	1241	GLU	-	expression tag	UNP A0A7T8R415
A	1242	TRP	-	expression tag	UNP A0A7T8R415
A	1243	VAL	-	expression tag	UNP A0A7T8R415
A	1244	LEU	-	expression tag	UNP A0A7T8R415
A	1245	LEU	-	expression tag	UNP A0A7T8R415
A	1246	SER	-	expression tag	UNP A0A7T8R415
A	1247	THR	-	expression tag	UNP A0A7T8R415
A	1248	PHE	-	expression tag	UNP A0A7T8R415
A	1249	LEU	-	expression tag	UNP A0A7T8R415
A	1250	GLY	-	expression tag	UNP A0A7T8R415
A	1251	HIS	-	expression tag	UNP A0A7T8R415
A	1252	HIS	-	expression tag	UNP A0A7T8R415
A	1253	HIS	-	expression tag	UNP A0A7T8R415
A	1254	HIS	-	expression tag	UNP A0A7T8R415
A	1255	HIS	-	expression tag	UNP A0A7T8R415
A	1256	HIS	-	expression tag	UNP A0A7T8R415
B	-30	MET	-	initiating methionine	UNP A0A7T8R415
B	-29	GLY	-	expression tag	UNP A0A7T8R415
B	-28	ILE	-	expression tag	UNP A0A7T8R415
B	-27	LEU	-	expression tag	UNP A0A7T8R415
B	-26	PRO	-	expression tag	UNP A0A7T8R415
B	-25	SER	-	expression tag	UNP A0A7T8R415
B	-24	PRO	-	expression tag	UNP A0A7T8R415
B	-23	GLY	-	expression tag	UNP A0A7T8R415
B	-22	MET	-	expression tag	UNP A0A7T8R415
B	-21	PRO	-	expression tag	UNP A0A7T8R415
B	-20	ALA	-	expression tag	UNP A0A7T8R415
B	-19	LEU	-	expression tag	UNP A0A7T8R415
B	-18	LEU	-	expression tag	UNP A0A7T8R415
B	-17	SER	-	expression tag	UNP A0A7T8R415
B	-16	LEU	-	expression tag	UNP A0A7T8R415
B	-15	VAL	-	expression tag	UNP A0A7T8R415
B	-14	SER	-	expression tag	UNP A0A7T8R415
B	-13	LEU	-	expression tag	UNP A0A7T8R415
B	-12	LEU	-	expression tag	UNP A0A7T8R415
B	-11	SER	-	expression tag	UNP A0A7T8R415
B	-10	VAL	-	expression tag	UNP A0A7T8R415
B	-9	LEU	-	expression tag	UNP A0A7T8R415
B	-8	LEU	-	expression tag	UNP A0A7T8R415
B	-7	MET	-	expression tag	UNP A0A7T8R415
B	-6	GLY	-	expression tag	UNP A0A7T8R415

*Continued on next page...*

*Continued from previous page...*

Chain	Residue	Modelled	Actual	Comment	Reference
B	-5	CYS	-	expression tag	UNP A0A7T8R415
B	-4	VAL	-	expression tag	UNP A0A7T8R415
B	-3	ALA	-	expression tag	UNP A0A7T8R415
B	-2	GLU	-	expression tag	UNP A0A7T8R415
B	-1	THR	-	expression tag	UNP A0A7T8R415
B	0	GLY	-	expression tag	UNP A0A7T8R415
B	682	SER	ARG	variant	UNP A0A7T8R415
B	685	SER	ARG	variant	UNP A0A7T8R415
B	986	PRO	LYS	variant	UNP A0A7T8R415
B	987	PRO	VAL	variant	UNP A0A7T8R415
B	1209	SER	-	expression tag	UNP A0A7T8R415
B	1210	GLY	-	expression tag	UNP A0A7T8R415
B	1211	ARG	-	expression tag	UNP A0A7T8R415
B	1212	GLU	-	expression tag	UNP A0A7T8R415
B	1213	ASN	-	expression tag	UNP A0A7T8R415
B	1214	LEU	-	expression tag	UNP A0A7T8R415
B	1215	TYR	-	expression tag	UNP A0A7T8R415
B	1216	PHE	-	expression tag	UNP A0A7T8R415
B	1217	GLN	-	expression tag	UNP A0A7T8R415
B	1218	GLY	-	expression tag	UNP A0A7T8R415
B	1219	GLY	-	expression tag	UNP A0A7T8R415
B	1220	GLY	-	expression tag	UNP A0A7T8R415
B	1221	GLY	-	expression tag	UNP A0A7T8R415
B	1222	SER	-	expression tag	UNP A0A7T8R415
B	1223	GLY	-	expression tag	UNP A0A7T8R415
B	1224	TYR	-	expression tag	UNP A0A7T8R415
B	1225	ILE	-	expression tag	UNP A0A7T8R415
B	1226	PRO	-	expression tag	UNP A0A7T8R415
B	1227	GLU	-	expression tag	UNP A0A7T8R415
B	1228	ALA	-	expression tag	UNP A0A7T8R415
B	1229	PRO	-	expression tag	UNP A0A7T8R415
B	1230	ARG	-	expression tag	UNP A0A7T8R415
B	1231	ASP	-	expression tag	UNP A0A7T8R415
B	1232	GLY	-	expression tag	UNP A0A7T8R415
B	1233	GLN	-	expression tag	UNP A0A7T8R415
B	1234	ALA	-	expression tag	UNP A0A7T8R415
B	1235	TYR	-	expression tag	UNP A0A7T8R415
B	1236	VAL	-	expression tag	UNP A0A7T8R415
B	1237	ARG	-	expression tag	UNP A0A7T8R415
B	1238	LYS	-	expression tag	UNP A0A7T8R415
B	1239	ASP	-	expression tag	UNP A0A7T8R415
B	1240	GLY	-	expression tag	UNP A0A7T8R415

*Continued on next page...*

*Continued from previous page...*

Chain	Residue	Modelled	Actual	Comment	Reference
B	1241	GLU	-	expression tag	UNP A0A7T8R415
B	1242	TRP	-	expression tag	UNP A0A7T8R415
B	1243	VAL	-	expression tag	UNP A0A7T8R415
B	1244	LEU	-	expression tag	UNP A0A7T8R415
B	1245	LEU	-	expression tag	UNP A0A7T8R415
B	1246	SER	-	expression tag	UNP A0A7T8R415
B	1247	THR	-	expression tag	UNP A0A7T8R415
B	1248	PHE	-	expression tag	UNP A0A7T8R415
B	1249	LEU	-	expression tag	UNP A0A7T8R415
B	1250	GLY	-	expression tag	UNP A0A7T8R415
B	1251	HIS	-	expression tag	UNP A0A7T8R415
B	1252	HIS	-	expression tag	UNP A0A7T8R415
B	1253	HIS	-	expression tag	UNP A0A7T8R415
B	1254	HIS	-	expression tag	UNP A0A7T8R415
B	1255	HIS	-	expression tag	UNP A0A7T8R415
B	1256	HIS	-	expression tag	UNP A0A7T8R415
C	-30	MET	-	initiating methionine	UNP A0A7T8R415
C	-29	GLY	-	expression tag	UNP A0A7T8R415
C	-28	ILE	-	expression tag	UNP A0A7T8R415
C	-27	LEU	-	expression tag	UNP A0A7T8R415
C	-26	PRO	-	expression tag	UNP A0A7T8R415
C	-25	SER	-	expression tag	UNP A0A7T8R415
C	-24	PRO	-	expression tag	UNP A0A7T8R415
C	-23	GLY	-	expression tag	UNP A0A7T8R415
C	-22	MET	-	expression tag	UNP A0A7T8R415
C	-21	PRO	-	expression tag	UNP A0A7T8R415
C	-20	ALA	-	expression tag	UNP A0A7T8R415
C	-19	LEU	-	expression tag	UNP A0A7T8R415
C	-18	LEU	-	expression tag	UNP A0A7T8R415
C	-17	SER	-	expression tag	UNP A0A7T8R415
C	-16	LEU	-	expression tag	UNP A0A7T8R415
C	-15	VAL	-	expression tag	UNP A0A7T8R415
C	-14	SER	-	expression tag	UNP A0A7T8R415
C	-13	LEU	-	expression tag	UNP A0A7T8R415
C	-12	LEU	-	expression tag	UNP A0A7T8R415
C	-11	SER	-	expression tag	UNP A0A7T8R415
C	-10	VAL	-	expression tag	UNP A0A7T8R415
C	-9	LEU	-	expression tag	UNP A0A7T8R415
C	-8	LEU	-	expression tag	UNP A0A7T8R415
C	-7	MET	-	expression tag	UNP A0A7T8R415
C	-6	GLY	-	expression tag	UNP A0A7T8R415
C	-5	CYS	-	expression tag	UNP A0A7T8R415

*Continued on next page...*



*Continued from previous page...*

Chain	Residue	Modelled	Actual	Comment	Reference
C	-4	VAL	-	expression tag	UNP A0A7T8R415
C	-3	ALA	-	expression tag	UNP A0A7T8R415
C	-2	GLU	-	expression tag	UNP A0A7T8R415
C	-1	THR	-	expression tag	UNP A0A7T8R415
C	0	GLY	-	expression tag	UNP A0A7T8R415
C	682	SER	ARG	variant	UNP A0A7T8R415
C	685	SER	ARG	variant	UNP A0A7T8R415
C	986	PRO	LYS	variant	UNP A0A7T8R415
C	987	PRO	VAL	variant	UNP A0A7T8R415
C	1209	SER	-	expression tag	UNP A0A7T8R415
C	1210	GLY	-	expression tag	UNP A0A7T8R415
C	1211	ARG	-	expression tag	UNP A0A7T8R415
C	1212	GLU	-	expression tag	UNP A0A7T8R415
C	1213	ASN	-	expression tag	UNP A0A7T8R415
C	1214	LEU	-	expression tag	UNP A0A7T8R415
C	1215	TYR	-	expression tag	UNP A0A7T8R415
C	1216	PHE	-	expression tag	UNP A0A7T8R415
C	1217	GLN	-	expression tag	UNP A0A7T8R415
C	1218	GLY	-	expression tag	UNP A0A7T8R415
C	1219	GLY	-	expression tag	UNP A0A7T8R415
C	1220	GLY	-	expression tag	UNP A0A7T8R415
C	1221	GLY	-	expression tag	UNP A0A7T8R415
C	1222	SER	-	expression tag	UNP A0A7T8R415
C	1223	GLY	-	expression tag	UNP A0A7T8R415
C	1224	TYR	-	expression tag	UNP A0A7T8R415
C	1225	ILE	-	expression tag	UNP A0A7T8R415
C	1226	PRO	-	expression tag	UNP A0A7T8R415
C	1227	GLU	-	expression tag	UNP A0A7T8R415
C	1228	ALA	-	expression tag	UNP A0A7T8R415
C	1229	PRO	-	expression tag	UNP A0A7T8R415
C	1230	ARG	-	expression tag	UNP A0A7T8R415
C	1231	ASP	-	expression tag	UNP A0A7T8R415
C	1232	GLY	-	expression tag	UNP A0A7T8R415
C	1233	GLN	-	expression tag	UNP A0A7T8R415
C	1234	ALA	-	expression tag	UNP A0A7T8R415
C	1235	TYR	-	expression tag	UNP A0A7T8R415
C	1236	VAL	-	expression tag	UNP A0A7T8R415
C	1237	ARG	-	expression tag	UNP A0A7T8R415
C	1238	LYS	-	expression tag	UNP A0A7T8R415
C	1239	ASP	-	expression tag	UNP A0A7T8R415
C	1240	GLY	-	expression tag	UNP A0A7T8R415
C	1241	GLU	-	expression tag	UNP A0A7T8R415

*Continued on next page...*



Continued from previous page...

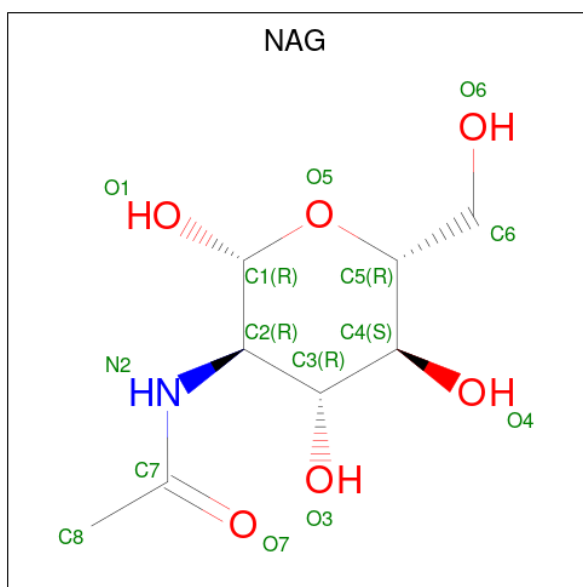
Chain	Residue	Modelled	Actual	Comment	Reference
C	1242	TRP	-	expression tag	UNP A0A7T8R415
C	1243	VAL	-	expression tag	UNP A0A7T8R415
C	1244	LEU	-	expression tag	UNP A0A7T8R415
C	1245	LEU	-	expression tag	UNP A0A7T8R415
C	1246	SER	-	expression tag	UNP A0A7T8R415
C	1247	THR	-	expression tag	UNP A0A7T8R415
C	1248	PHE	-	expression tag	UNP A0A7T8R415
C	1249	LEU	-	expression tag	UNP A0A7T8R415
C	1250	GLY	-	expression tag	UNP A0A7T8R415
C	1251	HIS	-	expression tag	UNP A0A7T8R415
C	1252	HIS	-	expression tag	UNP A0A7T8R415
C	1253	HIS	-	expression tag	UNP A0A7T8R415
C	1254	HIS	-	expression tag	UNP A0A7T8R415
C	1255	HIS	-	expression tag	UNP A0A7T8R415
C	1256	HIS	-	expression tag	UNP A0A7T8R415

- Molecule 2 is an oligosaccharide called 2-acetamido-2-deoxy-beta-D-glucopyranose-(1-4)-2-acetamido-2-deoxy-beta-D-glucopyranose.



Mol	Chain	Residues	Atoms				AltConf	Trace
			Total	C	N	O		
2	D	2	28	16	2	10	0	0
2	E	2	28	16	2	10	0	0
2	F	2	28	16	2	10	0	0

- Molecule 3 is 2-acetamido-2-deoxy-beta-D-glucopyranose (three-letter code: NAG) (formula: C<sub>8</sub>H<sub>15</sub>NO<sub>6</sub>).



Mol	Chain	Residues	Atoms				AltConf
			Total	C	N	O	
3	A	1	Total	C	N	O	0
			154	88	11	55	
3	A	1	Total	C	N	O	0
			154	88	11	55	
3	A	1	Total	C	N	O	0
			154	88	11	55	
3	A	1	Total	C	N	O	0
			154	88	11	55	
3	A	1	Total	C	N	O	0
			154	88	11	55	
3	A	1	Total	C	N	O	0
			154	88	11	55	
3	A	1	Total	C	N	O	0
			154	88	11	55	
3	A	1	Total	C	N	O	0
			154	88	11	55	
3	A	1	Total	C	N	O	0
			154	88	11	55	
3	A	1	Total	C	N	O	0
			154	88	11	55	
3	B	1	Total	C	N	O	0
			182	104	13	65	
3	B	1	Total	C	N	O	0
			182	104	13	65	
3	B	1	Total	C	N	O	0
			182	104	13	65	

*Continued on next page...*

*Continued from previous page...*

Mol	Chain	Residues	Atoms				AltConf
			Total	C	N	O	
3	B	1	182	104	13	65	0
3	B	1	182	104	13	65	0
3	B	1	182	104	13	65	0
3	B	1	182	104	13	65	0
3	B	1	182	104	13	65	0
3	B	1	182	104	13	65	0
3	B	1	182	104	13	65	0
3	B	1	182	104	13	65	0
3	B	1	182	104	13	65	0
3	B	1	182	104	13	65	0
3	B	1	182	104	13	65	0
3	C	1	182	104	13	65	0
3	C	1	182	104	13	65	0
3	C	1	182	104	13	65	0
3	C	1	182	104	13	65	0
3	C	1	182	104	13	65	0
3	C	1	182	104	13	65	0
3	C	1	182	104	13	65	0
3	C	1	182	104	13	65	0
3	C	1	182	104	13	65	0
3	C	1	182	104	13	65	0
3	C	1	182	104	13	65	0
3	C	1	182	104	13	65	0

*Continued on next page...*

*Continued from previous page...*

Mol	Chain	Residues	Atoms				AltConf
			Total	C	N	O	
3	C	1	182	104	13	65	0
3	C	1	182	104	13	65	0









- Molecule 2: 2-acetamido-2-deoxy-beta-D-glucofuranose-(1-4)-2-acetamido-2-deoxy-beta-D-glucofuranose

Chain D:  100%

MAG1  
MAG2

- Molecule 2: 2-acetamido-2-deoxy-beta-D-glucofuranose-(1-4)-2-acetamido-2-deoxy-beta-D-glucofuranose

Chain E:  100%

MAG1  
MAG2

- Molecule 2: 2-acetamido-2-deoxy-beta-D-glucofuranose-(1-4)-2-acetamido-2-deoxy-beta-D-glucofuranose

Chain F:  100%

MAG1  
MAG2

## 4 Experimental information

Property	Value	Source
EM reconstruction method	SINGLE PARTICLE	Depositor
Imposed symmetry	POINT, Not provided	
Number of particles used	46000	Depositor
Resolution determination method	FSC 0.143 CUT-OFF	Depositor
CTF correction method	PHASE FLIPPING AND AMPLITUDE CORRECTION	Depositor
Microscope	FEI TITAN KRIOS	Depositor
Voltage (kV)	300	Depositor
Electron dose ( $e^-/\text{\AA}^2$ )	35	Depositor
Minimum defocus (nm)	1000	Depositor
Maximum defocus (nm)	3000	Depositor
Magnification	Not provided	
Image detector	FEI FALCON III (4k x 4k)	Depositor
Maximum map value	3.346	Depositor
Minimum map value	-1.757	Depositor
Average map value	0.004	Depositor
Map value standard deviation	0.062	Depositor
Recommended contour level	0.5	Depositor
Map size (Å)	434.80002, 434.80002, 434.80002	wwPDB
Map dimensions	400, 400, 400	wwPDB
Map angles (°)	90.0, 90.0, 90.0	wwPDB
Pixel spacing (Å)	1.087, 1.087, 1.087	Depositor

## 5 Model quality [i](#)

### 5.1 Standard geometry [i](#)

Bond lengths and bond angles in the following residue types are not validated in this section: NAG

The Z score for a bond length (or angle) is the number of standard deviations the observed value is removed from the expected value. A bond length (or angle) with  $|Z| > 5$  is considered an outlier worth inspection. RMSZ is the root-mean-square of all Z scores of the bond lengths (or angles).

Mol	Chain	Bond lengths		Bond angles	
		RMSZ	# Z  >5	RMSZ	# Z  >5
1	A	0.29	0/7877	0.48	0/10717
1	B	0.29	0/8171	0.48	0/11113
1	C	0.29	0/7988	0.48	0/10868
All	All	0.29	0/24036	0.48	0/32698

There are no bond length outliers.

There are no bond angle outliers.

There are no chirality outliers.

There are no planarity outliers.

### 5.2 Too-close contacts [i](#)

In the following table, the Non-H and H(model) columns list the number of non-hydrogen atoms and hydrogen atoms in the chain respectively. The H(added) column lists the number of hydrogen atoms added and optimized by MolProbity. The Clashes column lists the number of clashes within the asymmetric unit, whereas Symm-Clashes lists symmetry-related clashes.

Mol	Chain	Non-H	H(model)	H(added)	Clashes	Symm-Clashes
1	A	7702	0	7524	176	0
1	B	7988	0	7784	179	0
1	C	7808	0	7601	185	0
2	D	28	0	25	3	0
2	E	28	0	25	0	0
2	F	28	0	25	1	0
3	A	154	0	143	2	0
3	B	182	0	169	2	0
3	C	182	0	169	3	0
All	All	24100	0	23465	516	0

The all-atom clashscore is defined as the number of clashes found per 1000 atoms (including hydrogen atoms). The all-atom clashscore for this structure is 11.

All (516) close contacts within the same asymmetric unit are listed below, sorted by their clash magnitude.

Atom-1	Atom-2	Interatomic distance (Å)	Clash overlap (Å)
1:B:374:PHE:HB3	1:B:436:TRP:HB3	1.54	0.89
1:A:706:ALA:H	1:B:895:GLN:HE21	1.24	0.84
1:B:753:LEU:HD13	1:B:997:ILE:HD11	1.65	0.77
1:B:974:SER:HB2	1:B:980:ILE:HD11	1.66	0.76
1:A:106:PHE:HB2	1:A:117:LEU:HB3	1.69	0.74
1:A:375:SER:H	1:A:436:TRP:HA	1.53	0.74
1:B:396:TYR:HB2	1:B:514:SER:HB3	1.71	0.73
1:A:716:ILE:HG22	1:A:1071:GLN:HB2	1.71	0.73
1:C:48:LEU:HB3	1:C:276:LEU:HD11	1.72	0.72
1:B:763:LEU:HD12	1:B:1008:VAL:HG21	1.70	0.71
1:A:725:GLU:OE2	1:A:1064:HIS:NE2	2.23	0.71
1:A:298:GLU:HG3	1:A:315:THR:HG21	1.73	0.70
1:C:537:LYS:NZ	1:C:538:CYS:O	2.23	0.69
1:A:188:ASN:HA	1:A:210:ILE:H	1.57	0.69
1:B:644:GLN:NE2	1:B:645:THR:O	2.19	0.69
1:B:331:ASN:HA	1:B:580:GLN:HG2	1.74	0.68
1:A:210:ILE:HG23	1:A:212:LEU:HD23	1.75	0.68
1:B:1098:ASN:HB3	1:B:1101:HIS:H	1.58	0.68
1:B:732:THR:OG1	1:B:955:ASN:ND2	2.27	0.67
1:B:92:PHE:HE1	1:B:265:TYR:HB2	1.60	0.67
1:C:330:PRO:O	1:C:580:GLN:NE2	2.26	0.67
1:B:969:ASN:HB3	1:C:755:GLN:HG3	1.76	0.67
1:B:376:THR:OG1	1:B:378:LYS:NZ	2.17	0.66
1:B:439:ASN:ND2	1:B:506:GLN:OE1	2.29	0.66
1:A:1081:ILE:HD11	1:A:1135:ASN:HB3	1.76	0.66
1:A:328:ARG:HB3	1:A:580:GLN:HG2	1.78	0.66
1:B:102:ARG:HE	1:B:243:ALA:HB2	1.62	0.65
1:A:206:LYS:NZ	1:A:207:HIS:O	2.28	0.65
1:A:965:GLN:O	1:A:968:SER:OG	2.14	0.64
1:A:366:SER:H	1:A:388:ASN:HD21	1.46	0.64
1:A:971:GLY:O	1:A:995:ARG:NH1	2.26	0.64
1:A:294:ASP:O	1:A:297:SER:OG	2.10	0.64
1:B:578:ASP:OD2	1:B:581:THR:N	2.26	0.64
1:B:456:PHE:H	1:B:491:PRO:HB3	1.62	0.64
1:B:81:ASN:O	1:B:239:GLN:NE2	2.30	0.63
1:C:905:ARG:NH1	1:C:1049:LEU:O	2.32	0.63
1:C:763:LEU:HD12	1:C:1008:VAL:HG21	1.79	0.63

*Continued on next page...*

*Continued from previous page...*

Atom-1	Atom-2	Interatomic distance (Å)	Clash overlap (Å)
1:A:280:ASN:HD22	2:D:1:NAG:H82	1.63	0.63
1:A:985:ASP:HB3	1:A:987:PRO:HD2	1.80	0.63
1:B:134:GLN:HB3	1:B:161:SER:HB2	1.80	0.63
1:B:770:ILE:HD11	1:B:1012:LEU:HD23	1.81	0.63
1:C:206:LYS:NZ	1:C:207:HIS:O	2.29	0.63
1:A:327:VAL:HG22	1:A:542:ASN:HB3	1.81	0.62
1:C:367:VAL:O	1:C:371:SER:OG	2.17	0.62
1:C:82:PRO:O	1:C:239:GLN:NE2	2.31	0.62
1:C:854:LYS:NZ	1:C:858:LEU:O	2.33	0.62
1:C:475:ALA:HB3	1:C:487:ASN:HB3	1.81	0.62
1:C:426:PRO:HG3	1:C:463:PRO:HB3	1.82	0.62
1:A:983:ARG:HB2	1:C:382:VAL:HG22	1.82	0.62
1:A:570:ASP:HB2	1:B:963:VAL:HG11	1.82	0.62
1:A:976:VAL:HG12	1:A:979:ASP:H	1.64	0.61
1:C:1029:MET:HE1	1:C:1053:PRO:HG3	1.81	0.61
1:C:141:LEU:HB2	1:C:243:ALA:HA	1.82	0.61
1:A:473:TYR:HB2	1:A:491:PRO:HG3	1.82	0.61
1:B:822:LEU:HD21	1:B:1061:VAL:HG21	1.82	0.61
1:C:280:ASN:OD1	1:C:284:THR:N	2.33	0.61
1:A:82:PRO:O	1:A:239:GLN:NE2	2.33	0.61
1:C:226:LEU:HD23	1:C:227:VAL:HG23	1.83	0.61
1:C:52:GLN:OE1	1:C:274:THR:OG1	2.19	0.61
1:C:658:ASN:ND2	1:C:660:TYR:OH	2.34	0.61
1:A:448:ASN:HB2	1:A:497:PHE:HB2	1.82	0.61
1:C:662:CYS:HB2	1:C:697:MET:HG3	1.83	0.61
1:B:473:TYR:HB2	1:B:491:PRO:HG3	1.83	0.60
1:B:731:MET:N	1:B:774:GLN:OE1	2.29	0.60
1:A:456:PHE:H	1:A:491:PRO:HB3	1.64	0.60
1:A:592:PHE:HE2	1:B:857:GLY:H	1.49	0.60
1:B:501:TYR:O	1:B:506:GLN:NE2	2.35	0.60
1:B:278:LYS:HE3	1:B:287:ASP:HB3	1.84	0.60
1:C:328:ARG:NH1	1:C:531:THR:O	2.34	0.60
1:C:991:VAL:HG23	1:C:992:GLN:HE21	1.67	0.59
1:A:65:PHE:HE2	1:A:84:LEU:HD21	1.66	0.59
1:A:376:THR:HB	1:A:435:ALA:HB3	1.84	0.59
1:A:773:GLU:OE2	1:A:1019:ARG:NH1	2.35	0.59
1:A:1086:LYS:HG3	1:A:1088:HIS:HE1	1.66	0.59
1:C:644:GLN:NE2	1:C:645:THR:O	2.36	0.59
1:C:537:LYS:NZ	1:C:538:CYS:SG	2.76	0.59
1:A:1091:ARG:HE	1:A:1121:PHE:HB3	1.67	0.59
1:B:957:GLN:OE1	1:C:765:ARG:NH2	2.36	0.59

*Continued on next page...*

*Continued from previous page...*

Atom-1	Atom-2	Interatomic distance (Å)	Clash overlap (Å)
1:C:287:ASP:OD1	1:C:288:ALA:N	2.36	0.58
1:A:1141:LEU:HD11	1:B:1144:GLU:HG2	1.85	0.58
1:B:1125:ASN:ND2	1:B:1127:ASP:OD2	2.36	0.58
1:C:567:ARG:NH1	1:C:571:ASP:OD1	2.35	0.58
1:B:448:ASN:H	1:B:497:PHE:H	1.52	0.58
1:C:365:TYR:HD1	1:C:388:ASN:HB2	1.68	0.58
1:B:189:LEU:HB2	1:B:210:ILE:HD13	1.86	0.57
1:B:193:VAL:HB	1:B:204:TYR:HB2	1.86	0.57
1:B:369:TYR:HA	1:B:372:ALA:HB2	1.85	0.57
1:C:791:THR:HG21	1:C:806:LEU:HD21	1.84	0.57
1:A:329:PHE:HB2	1:A:330:PRO:HD3	1.87	0.57
1:B:319:ARG:HG3	1:B:591:SER:HB3	1.86	0.57
1:B:706:ALA:O	1:C:895:GLN:NE2	2.33	0.57
1:B:1010:GLN:HB3	1:B:1014:ARG:HH21	1.68	0.57
1:A:808:ASP:OD2	1:A:810:SER:OG	2.21	0.57
1:B:915:VAL:O	1:B:919:ASN:ND2	2.38	0.57
1:B:475:ALA:HB3	1:B:487:ASN:HB3	1.85	0.57
1:C:905:ARG:NH1	1:C:1050:MET:HG2	2.19	0.57
1:A:291:CYS:HB2	1:A:298:GLU:HA	1.87	0.57
1:B:329:PHE:HB3	1:B:330:PRO:HD3	1.87	0.57
1:B:290:ASP:OD1	1:B:292:ALA:N	2.29	0.57
1:C:216:LEU:HD12	1:C:217:PRO:HD2	1.86	0.57
1:A:231:ILE:HG23	1:A:233:ILE:HG12	1.86	0.56
1:A:722:VAL:HG22	1:A:930:ALA:HB1	1.87	0.56
1:B:729:VAL:HG22	1:B:1059:GLY:HA2	1.86	0.56
1:C:328:ARG:HE	1:C:533:LEU:HB2	1.70	0.56
1:A:330:PRO:O	1:A:580:GLN:NE2	2.33	0.56
1:A:816:SER:OG	1:A:819:GLU:OE1	2.14	0.56
1:A:598:ILE:HB	1:A:609:ALA:HB3	1.88	0.56
1:A:454:ARG:HH22	1:A:471:GLU:H	1.54	0.56
1:A:756:TYR:O	1:C:965:GLN:NE2	2.37	0.56
1:A:422:ASN:OD1	1:A:454:ARG:N	2.38	0.56
1:A:1039:ARG:NE	1:B:1031:GLU:OE2	2.32	0.55
1:A:433:VAL:HG22	1:A:512:VAL:HG23	1.88	0.55
1:C:121:ASN:HA	1:C:126:VAL:HG22	1.89	0.55
1:A:589:PRO:HD3	1:B:855:PHE:CZ	2.41	0.55
1:B:366:SER:HA	1:B:369:TYR:CZ	2.41	0.55
1:A:1144:GLU:N	1:A:1144:GLU:OE1	2.38	0.55
1:B:66:HIS:HB2	1:B:78:ARG:HG2	1.87	0.55
1:B:357:ARG:NH2	1:B:394:ASN:OD1	2.39	0.55
1:B:424:LYS:HB2	1:B:461:LEU:HD23	1.88	0.55

*Continued on next page...*

*Continued from previous page...*

Atom-1	Atom-2	Interatomic distance (Å)	Clash overlap (Å)
1:A:340:GLU:HA	1:A:343:ASN:HB2	1.89	0.55
1:B:159:VAL:HG23	1:B:160:TYR:HD1	1.72	0.55
1:B:722:VAL:HG22	1:B:1065:VAL:HG12	1.88	0.55
1:A:474:GLN:NE2	1:A:488:CYS:SG	2.80	0.55
1:C:188:ASN:HA	1:C:209:PRO:HA	1.88	0.54
1:C:442:ASP:HB3	1:C:451:TYR:HE2	1.73	0.54
1:C:94:SER:OG	1:C:190:ARG:O	2.21	0.54
1:C:329:PHE:HB3	1:C:330:PRO:HD3	1.88	0.54
1:C:330:PRO:HD2	1:C:530:SER:HB2	1.88	0.54
1:B:410:ILE:HG13	1:B:510:VAL:HG11	1.90	0.54
1:A:273:ARG:HE	1:A:292:ALA:HB3	1.73	0.54
1:B:328:ARG:NH2	1:B:531:THR:O	2.39	0.54
1:B:378:LYS:HB2	1:B:433:VAL:HB	1.89	0.54
1:B:406:GLU:OE1	1:B:495:TYR:OH	2.17	0.53
1:B:1009:THR:O	1:B:1013:ILE:HG12	2.08	0.53
1:C:566:GLY:HA3	1:C:575:ALA:HB3	1.89	0.53
1:B:666:ILE:HD13	1:B:670:ILE:HG22	1.90	0.53
1:C:816:SER:N	1:C:819:GLU:OE2	2.42	0.53
1:A:759:PHE:HD2	1:A:1001:LEU:HD21	1.74	0.53
1:A:962:LEU:HD11	1:A:1007:TYR:CG	2.43	0.53
1:C:365:TYR:N	1:C:388:ASN:OD1	2.41	0.53
1:B:885:GLY:HA2	1:B:901:GLN:NE2	2.24	0.53
1:C:134:GLN:HB3	1:C:161:SER:HB2	1.89	0.53
1:B:568:ASP:OD1	1:B:572:THR:N	2.32	0.53
1:C:273:ARG:HH21	1:C:292:ALA:HB3	1.74	0.53
1:A:81:ASN:OD1	1:A:239:GLN:NE2	2.42	0.52
1:A:353:TRP:O	1:A:466:ARG:NH1	2.42	0.52
1:B:1039:ARG:NE	1:C:1031:GLU:OE2	2.42	0.52
1:C:202:LYS:HB3	1:C:204:TYR:HE1	1.74	0.52
1:C:819:GLU:HA	1:C:822:LEU:HD12	1.91	0.52
1:A:33:THR:HG22	1:A:58:PHE:HD2	1.74	0.52
1:A:993:ILE:O	1:A:997:ILE:HG12	2.09	0.52
1:C:102:ARG:HH11	1:C:243:ALA:HB2	1.75	0.52
1:A:965:GLN:OE1	1:B:758:SER:OG	2.28	0.52
1:B:320:VAL:H	1:B:591:SER:HA	1.75	0.52
1:B:64:TRP:CD1	1:B:266:TYR:HE1	2.28	0.52
1:C:374:PHE:HB3	1:C:436:TRP:HB3	1.92	0.52
1:A:116:SER:OG	1:A:131:CYS:O	2.27	0.51
1:B:900:MET:SD	1:B:900:MET:N	2.83	0.51
1:C:86:PHE:HB2	1:C:238:PHE:CD1	2.45	0.51
1:A:1125:ASN:OD1	1:A:1126:CYS:N	2.41	0.51

*Continued on next page...*



*Continued from previous page...*

Atom-1	Atom-2	Interatomic distance (Å)	Clash overlap (Å)
1:B:405:ASP:O	1:B:408:ARG:NH1	2.43	0.51
1:B:816:SER:N	1:B:819:GLU:OE2	2.43	0.51
1:A:448:ASN:O	1:A:494:SER:OG	2.26	0.51
1:B:454:ARG:HD2	1:B:491:PRO:HB2	1.92	0.51
1:C:102:ARG:O	1:C:121:ASN:N	2.37	0.51
1:C:976:VAL:HG12	1:C:979:ASP:H	1.75	0.51
1:A:43:PHE:CE1	1:A:283:GLY:HA3	2.46	0.51
1:A:458:LYS:NZ	1:A:472:ILE:O	2.44	0.51
1:A:280:ASN:HD21	1:A:282:ASN:HB2	1.75	0.51
1:C:395:VAL:HG23	1:C:524:VAL:HG21	1.93	0.51
1:B:88:ASP:OD1	1:B:88:ASP:N	2.44	0.51
1:B:320:VAL:O	1:B:591:SER:OG	2.27	0.51
1:B:924:ALA:O	1:B:928:ASN:ND2	2.44	0.51
1:C:522:ALA:HB2	1:C:544:ASN:HB3	1.93	0.51
1:A:37:TYR:OH	1:A:195:LYS:NZ	2.42	0.51
1:A:1006:THR:O	1:A:1010:GLN:HG2	2.11	0.51
1:C:365:TYR:O	1:C:369:TYR:N	2.37	0.51
1:C:726:ILE:HD12	1:C:1061:VAL:HG22	1.93	0.51
1:A:702:GLU:OE1	1:B:790:LYS:NZ	2.35	0.51
1:B:565:PHE:HB2	1:C:42:VAL:HG22	1.91	0.51
1:B:969:ASN:OD1	1:B:972:ALA:N	2.44	0.51
1:C:1054:GLN:HB2	1:C:1061:VAL:HB	1.93	0.51
1:B:936:ASP:O	1:B:939:SER:OG	2.24	0.50
1:C:729:VAL:HG22	1:C:1059:GLY:HA2	1.93	0.50
1:A:894:LEU:HB3	1:C:713:ALA:HB3	1.92	0.50
1:C:421:TYR:CG	1:C:457:ARG:HB2	2.46	0.50
1:C:854:LYS:HD2	1:C:858:LEU:HB2	1.92	0.50
1:A:295:PRO:HA	1:A:298:GLU:CD	2.31	0.50
1:A:642:VAL:HG22	1:A:651:ILE:HG22	1.94	0.50
1:A:127:VAL:HG21	3:A:1311:NAG:H61	1.91	0.50
1:C:664:ILE:HD11	1:C:672:ALA:HB3	1.93	0.50
1:C:731:MET:H	1:C:774:GLN:NE2	2.10	0.50
1:B:128:ILE:HB	1:B:170:TYR:HB3	1.92	0.50
1:B:343:ASN:HB2	3:B:1311:NAG:C7	2.41	0.50
1:C:93:ALA:HA	1:C:191:GLU:HG3	1.93	0.50
1:A:299:THR:OG1	1:A:597:VAL:HG11	2.12	0.50
1:B:326:ILE:HD13	1:B:534:VAL:HG12	1.93	0.50
1:C:811:LYS:HD2	1:C:812:PRO:HD2	1.92	0.50
1:A:39:PRO:HG3	1:A:51:THR:HG21	1.93	0.50
1:A:393:THR:HG21	1:A:518:LEU:HB2	1.93	0.50
1:B:1032:CYS:O	1:B:1051:SER:OG	2.22	0.49

*Continued on next page...*

*Continued from previous page...*

Atom-1	Atom-2	Interatomic distance (Å)	Clash overlap (Å)
1:C:770:ILE:HD11	1:C:1012:LEU:HD13	1.94	0.49
1:A:330:PRO:HG3	1:A:528:LYS:HB3	1.94	0.49
1:A:1086:LYS:HG3	1:A:1088:HIS:CE1	2.46	0.49
1:B:377:PHE:CD2	1:B:384:PRO:HB3	2.48	0.49
1:C:905:ARG:CZ	1:C:1050:MET:HG2	2.43	0.49
1:A:1125:ASN:ND2	1:A:1127:ASP:OD2	2.45	0.49
1:C:86:PHE:HB2	1:C:238:PHE:HD1	1.76	0.49
1:C:110:LEU:HB2	1:C:237:ARG:HH21	1.78	0.49
1:C:884:SER:OG	1:C:887:THR:OG1	2.24	0.49
1:C:1091:ARG:NH1	1:C:1118:HIS:O	2.40	0.49
1:A:280:ASN:OD1	1:A:284:THR:N	2.33	0.49
1:A:357:ARG:NH2	1:A:394:ASN:OD1	2.46	0.49
1:C:159:VAL:HG23	1:C:160:TYR:CD2	2.48	0.49
1:A:969:ASN:OD1	1:A:972:ALA:N	2.32	0.49
1:C:1083:HIS:CG	1:C:1137:VAL:HG12	2.46	0.49
1:B:327:VAL:N	1:B:531:THR:OG1	2.45	0.49
1:A:807:PRO:HA	1:A:816:SER:HB3	1.94	0.49
1:A:1116:THR:H	1:A:1119:ASN:HD21	1.60	0.49
1:B:323:THR:OG1	1:B:324:GLU:OE1	2.22	0.49
1:C:1002:GLN:O	1:C:1006:THR:HG23	2.13	0.49
1:B:1123:SER:OG	1:C:914:ASN:OD1	2.22	0.49
1:A:815:ARG:HB3	1:A:819:GLU:HB2	1.94	0.49
1:B:589:PRO:HG3	1:C:855:PHE:HA	1.95	0.49
1:B:1089:PHE:HE2	1:C:914:ASN:HA	1.78	0.49
1:C:759:PHE:O	1:C:763:LEU:HD23	2.12	0.49
1:A:676:THR:N	1:A:690:GLN:OE1	2.39	0.48
1:B:426:PRO:HG3	1:B:463:PRO:HB3	1.94	0.48
1:B:498:GLN:OE1	1:B:501:TYR:N	2.46	0.48
1:C:867:ASP:N	1:C:867:ASP:OD1	2.46	0.48
1:A:770:ILE:HD11	1:A:1012:LEU:HD23	1.95	0.48
1:B:328:ARG:HH12	1:B:533:LEU:HB2	1.78	0.48
1:C:962:LEU:HD11	1:C:1007:TYR:CG	2.48	0.48
1:A:1074:ASN:HB2	3:A:1308:NAG:O5	2.12	0.48
1:B:140:PHE:HB2	1:B:244:LEU:HD13	1.95	0.48
1:B:874:THR:HG1	1:B:1055:SER:HG	1.61	0.48
1:A:280:ASN:ND2	1:A:282:ASN:H	2.12	0.48
1:B:598:ILE:HB	1:B:609:ALA:HB3	1.95	0.48
1:A:553:THR:HG23	1:A:586:ASP:HB2	1.95	0.48
1:C:201:PHE:HD2	1:C:203:ILE:HD11	1.78	0.48
1:C:569:ILE:H	1:C:569:ILE:HD12	1.78	0.48
1:C:985:ASP:OD2	1:C:987:PRO:HD2	2.13	0.48

*Continued on next page...*

*Continued from previous page...*

Atom-1	Atom-2	Interatomic distance (Å)	Clash overlap (Å)
1:A:348:ALA:HB2	1:A:354:ASN:HD22	1.78	0.48
1:B:401:VAL:HG22	1:B:509:ARG:HD3	1.96	0.48
1:C:577:ARG:HD3	1:C:584:ILE:HD13	1.96	0.48
1:C:962:LEU:HD21	1:C:1007:TYR:HB2	1.95	0.48
1:A:104:TRP:H	1:A:119:ILE:HG23	1.79	0.48
1:B:658:ASN:OD1	1:B:659:SER:N	2.42	0.48
1:B:785:VAL:HG22	1:B:787:GLN:H	1.79	0.47
1:B:67:ALA:HB3	1:B:263:ALA:H	1.79	0.47
1:B:497:PHE:HB3	1:B:507:PRO:HD3	1.96	0.47
1:C:437:ASN:OD1	1:C:438:SER:N	2.46	0.47
1:A:1052:PHE:HB2	1:A:1063:LEU:HB2	1.96	0.47
1:B:90:VAL:HG22	1:B:194:PHE:HB2	1.97	0.47
1:B:103:GLY:H	1:B:241:LEU:HB2	1.79	0.47
1:C:365:TYR:CD1	1:C:388:ASN:HB2	2.49	0.47
1:B:366:SER:N	1:B:388:ASN:HD21	2.11	0.47
1:B:546:LEU:HD11	1:B:573:THR:HG21	1.96	0.47
1:B:793:PRO:O	1:B:795:LYS:NZ	2.46	0.47
1:C:329:PHE:CZ	1:C:391:CYS:HB2	2.49	0.47
1:C:343:ASN:HB2	3:C:1312:NAG:H83	1.96	0.47
1:C:88:ASP:N	1:C:88:ASP:OD1	2.44	0.47
1:C:718:PHE:HZ	1:C:923:ILE:HD11	1.78	0.47
1:C:884:SER:OG	1:C:894:LEU:N	2.40	0.47
1:B:1091:ARG:NE	1:B:1118:HIS:O	2.47	0.47
1:A:128:ILE:O	1:A:170:TYR:N	2.48	0.47
1:A:357:ARG:NH1	1:A:396:TYR:OH	2.48	0.47
1:A:741:TYR:CE2	1:A:966:LEU:HD21	2.49	0.47
1:A:787:GLN:HB2	1:A:789:TYR:CZ	2.49	0.47
1:A:882:ILE:HG23	1:A:883:THR:HG23	1.96	0.47
1:B:97:LYS:HE2	1:B:187:LYS:HB2	1.97	0.47
1:B:308:VAL:HB	1:B:602:THR:HB	1.97	0.47
1:B:343:ASN:HB2	3:B:1311:NAG:N2	2.29	0.47
1:C:954:GLN:HG2	1:C:1014:ARG:CZ	2.45	0.47
1:C:988:GLU:OE1	1:C:988:GLU:N	2.48	0.47
1:A:125:ASN:HA	1:A:173:GLN:O	2.14	0.47
1:B:101:ILE:HA	1:B:242:LEU:HD13	1.97	0.47
1:B:960:ASN:OD1	1:B:961:THR:N	2.47	0.47
1:C:656:VAL:HG22	1:C:658:ASN:H	1.80	0.47
1:C:751:ASN:HA	1:C:754:LEU:HD23	1.97	0.47
1:A:347:PHE:CE2	1:A:509:ARG:HB3	2.50	0.47
1:A:578:ASP:HB3	1:A:583:GLU:H	1.80	0.47
1:A:737:ASP:OD2	1:C:317:ASN:ND2	2.48	0.46

*Continued on next page...*

*Continued from previous page...*

Atom-1	Atom-2	Interatomic distance (Å)	Clash overlap (Å)
1:B:86:PHE:HB2	1:B:238:PHE:HB2	1.97	0.46
1:B:355:ARG:NH2	1:B:516:GLU:OE2	2.48	0.46
2:F:1:NAG:H4	2:F:2:NAG:H2	1.75	0.46
1:B:347:PHE:CD2	1:B:509:ARG:HD2	2.50	0.46
1:B:372:ALA:HB1	1:B:377:PHE:HB2	1.98	0.46
1:C:298:GLU:O	1:C:302:THR:OG1	2.27	0.46
1:A:457:ARG:HE	1:A:467:ASP:HA	1.81	0.46
1:B:194:PHE:HD2	1:B:201:PHE:HZ	1.62	0.46
1:C:731:MET:HG2	1:C:774:GLN:HE21	1.81	0.46
1:A:360:ASN:H	1:A:523:THR:HG23	1.80	0.46
1:A:905:ARG:CZ	1:A:1050:MET:HB2	2.46	0.46
1:A:906:PHE:CD2	1:A:916:LEU:HB2	2.51	0.46
1:C:128:ILE:HD13	1:C:170:TYR:HD2	1.79	0.46
1:C:993:ILE:O	1:C:997:ILE:HG12	2.15	0.46
1:C:1010:GLN:HE22	1:C:1014:ARG:NH1	2.14	0.46
1:A:103:GLY:HA3	1:A:120:VAL:HA	1.97	0.46
1:B:95:THR:HG22	1:B:189:LEU:HD13	1.98	0.46
1:B:357:ARG:NH1	1:B:359:SER:OG	2.49	0.46
1:A:295:PRO:HB2	1:A:608:VAL:HG21	1.96	0.46
1:A:312:ILE:HD12	1:A:598:ILE:HG12	1.98	0.46
1:B:971:GLY:H	1:C:755:GLN:HG2	1.80	0.46
1:A:454:ARG:HD2	1:A:491:PRO:HB2	1.97	0.46
1:C:516:GLU:HB3	1:C:519:HIS:ND1	2.30	0.46
1:A:233:ILE:HG13	1:A:235:ILE:HD11	1.96	0.46
1:C:1081:ILE:HG23	1:C:1088:HIS:HB2	1.97	0.46
1:B:442:ASP:OD1	1:B:442:ASP:N	2.49	0.46
1:C:676:THR:OG1	1:C:690:GLN:OE1	2.34	0.46
1:C:524:VAL:HG23	1:C:524:VAL:O	2.16	0.45
1:A:453:TYR:CZ	1:A:493:GLN:HB2	2.51	0.45
1:B:423:TYR:HE1	1:B:464:PHE:HA	1.80	0.45
1:C:124:THR:O	1:C:175:PHE:N	2.35	0.45
1:C:280:ASN:HD21	1:C:282:ASN:HB2	1.80	0.45
1:A:1102:TRP:CZ2	1:A:1133:VAL:HG11	2.51	0.45
1:C:1010:GLN:HE22	1:C:1014:ARG:NH2	2.13	0.45
1:B:91:TYR:HB3	1:B:268:GLY:HA3	1.98	0.45
1:B:377:PHE:HD2	1:B:384:PRO:HB3	1.80	0.45
1:C:440:ASN:HA	1:C:443:SER:HB2	1.98	0.45
1:C:731:MET:HG2	1:C:774:GLN:NE2	2.31	0.45
1:B:367:VAL:HA	1:B:370:ASN:HB2	1.99	0.45
1:B:422:ASN:HA	1:B:467:ASP:HB2	1.98	0.45
1:A:962:LEU:HD11	1:A:1007:TYR:CD2	2.51	0.45

*Continued on next page...*

*Continued from previous page...*

Atom-1	Atom-2	Interatomic distance (Å)	Clash overlap (Å)
1:C:442:ASP:O	1:C:448:ASN:ND2	2.44	0.45
1:B:364:ASP:HA	1:B:527:PRO:HD3	1.99	0.45
1:C:1083:HIS:HD2	1:C:1136:THR:HA	1.81	0.45
1:A:617:CYS:HB2	1:A:649:CYS:HB3	1.90	0.45
1:B:327:VAL:HG13	1:B:542:ASN:HB3	1.97	0.45
1:C:329:PHE:CE2	1:C:525:CYS:HB3	2.52	0.45
1:C:403:ARG:HD3	1:C:505:TYR:HD1	1.81	0.45
1:B:422:ASN:O	1:B:457:ARG:NH1	2.50	0.45
1:C:101:ILE:HA	1:C:242:LEU:HD13	1.98	0.45
1:C:733:LYS:HZ3	1:C:775:ASP:CG	2.20	0.45
1:C:922:LEU:HG	1:C:926:GLN:HE22	1.81	0.45
1:B:542:ASN:HA	1:B:546:LEU:O	2.17	0.45
1:C:763:LEU:HD21	1:C:1005:GLN:OE1	2.17	0.44
1:A:188:ASN:HA	1:A:209:PRO:HA	1.99	0.44
1:A:540:ASN:OD1	1:A:541:PHE:N	2.49	0.44
1:B:392:PHE:HA	1:B:517:LEU:HD21	2.00	0.44
1:C:1097:SER:HB2	1:C:1102:TRP:CE3	2.52	0.44
1:A:80:ASP:OD1	1:A:80:ASP:N	2.49	0.44
1:C:411:ALA:HB3	1:C:414:GLN:HB3	1.99	0.44
1:A:281:GLU:OE1	1:A:281:GLU:N	2.44	0.44
1:B:375:SER:HB3	1:B:436:TRP:HA	1.99	0.44
1:B:412:PRO:HG2	1:B:426:PRO:O	2.17	0.44
1:A:811:LYS:HZ2	1:A:812:PRO:HD2	1.81	0.44
1:A:281:GLU:OE2	2:D:1:NAG:N2	2.35	0.44
1:B:673:SER:OG	1:B:674:TYR:N	2.51	0.44
1:C:354:ASN:OD1	1:C:355:ARG:N	2.50	0.44
1:C:906:PHE:CD2	1:C:916:LEU:HD12	2.52	0.44
1:A:53:ASP:OD2	1:A:195:LYS:NZ	2.47	0.44
1:B:329:PHE:HD1	1:B:544:ASN:HA	1.81	0.44
1:A:374:PHE:HA	1:A:436:TRP:HB3	1.99	0.44
1:A:455:LEU:N	1:A:491:PRO:O	2.51	0.44
1:A:718:PHE:HE2	1:A:923:ILE:HD13	1.83	0.44
1:B:733:LYS:HD2	1:B:771:ALA:HB1	1.99	0.44
1:C:473:TYR:N	1:C:489:TYR:O	2.47	0.43
1:C:874:THR:HG21	1:C:1055:SER:HB3	1.99	0.43
1:C:878:LEU:HD11	1:C:1052:PHE:HB3	2.00	0.43
1:B:906:PHE:CD2	1:B:916:LEU:HB2	2.53	0.43
1:C:353:TRP:NE1	1:C:466:ARG:HG2	2.32	0.43
1:A:53:ASP:HB3	1:A:55:PHE:CE1	2.53	0.43
1:B:347:PHE:CE2	1:B:509:ARG:HB3	2.52	0.43
1:C:403:ARG:HE	1:C:497:PHE:HE1	1.66	0.43

*Continued on next page...*

*Continued from previous page...*

Atom-1	Atom-2	Interatomic distance (Å)	Clash overlap (Å)
1:C:530:SER:OG	1:C:531:THR:N	2.51	0.43
1:C:1010:GLN:HE22	1:C:1014:ARG:HH22	1.66	0.43
1:A:205:SER:HA	1:A:223:LEU:HD23	2.01	0.43
1:A:936:ASP:O	1:A:939:SER:OG	2.28	0.43
1:C:280:ASN:OD1	1:C:283:GLY:N	2.52	0.43
1:C:1094:VAL:HG23	1:C:1096:VAL:HG13	2.00	0.43
1:A:616:ASN:O	1:A:618:THR:N	2.51	0.43
1:C:127:VAL:HG22	1:C:171:VAL:HA	1.99	0.43
1:A:57:PRO:HB3	1:A:273:ARG:NH1	2.34	0.43
1:A:220:PHE:HD2	1:A:287:ASP:HA	1.84	0.43
1:B:102:ARG:NE	1:B:243:ALA:HB2	2.31	0.43
1:B:994:ASP:O	1:B:997:ILE:HG22	2.19	0.43
1:C:814:LYS:HA	1:C:814:LYS:HD3	1.64	0.43
1:C:379:CYS:SG	1:C:384:PRO:HB3	2.58	0.43
1:C:122:ASN:OD1	1:C:123:ALA:N	2.52	0.43
2:D:1:NAG:H4	2:D:2:NAG:H2	1.73	0.43
1:A:901:GLN:HE22	1:A:905:ARG:NH2	2.17	0.43
1:A:1097:SER:HB2	1:A:1102:TRP:CD2	2.54	0.43
1:B:402:ILE:HG12	1:B:510:VAL:HG21	2.00	0.43
1:B:644:GLN:NE2	1:B:648:GLY:O	2.52	0.43
1:B:787:GLN:HB2	1:B:789:TYR:CZ	2.54	0.43
1:A:316:SER:OG	1:A:317:ASN:N	2.50	0.43
1:A:741:TYR:CE1	1:A:1004:LEU:HD21	2.54	0.43
1:C:212:LEU:HD12	1:C:213:VAL:O	2.19	0.43
1:C:403:ARG:HD3	1:C:505:TYR:CD1	2.54	0.43
1:A:644:GLN:NE2	1:A:645:THR:O	2.46	0.42
1:C:367:VAL:HG11	3:C:1312:NAG:H61	2.00	0.42
1:C:818:ILE:HG13	1:C:819:GLU:N	2.34	0.42
1:C:1089:PHE:N	1:C:1120:THR:OG1	2.52	0.42
1:A:130:VAL:N	1:A:168:PHE:O	2.51	0.42
1:A:386:LYS:O	1:A:386:LYS:HG3	2.20	0.42
1:B:442:ASP:O	1:B:507:PRO:HG3	2.19	0.42
1:A:351:TYR:HB2	1:A:467:ASP:HB3	2.01	0.42
1:A:592:PHE:H	1:B:853:GLN:NE2	2.18	0.42
1:B:532:ASN:OD1	1:B:532:ASN:N	2.52	0.42
1:C:30:ASN:HD21	1:C:59:PHE:HB3	1.83	0.42
1:C:922:LEU:O	1:C:926:GLN:OE1	2.37	0.42
1:A:189:LEU:N	1:A:208:THR:O	2.53	0.42
1:A:281:GLU:HG2	1:A:282:ASN:OD1	2.19	0.42
1:C:120:VAL:O	1:C:126:VAL:HG13	2.20	0.42
1:C:427:ASP:OD1	1:C:428:ASP:N	2.52	0.42

*Continued on next page...*

*Continued from previous page...*

Atom-1	Atom-2	Interatomic distance (Å)	Clash overlap (Å)
1:C:437:ASN:ND2	1:C:506:GLN:OE1	2.33	0.42
1:A:295:PRO:HA	1:A:298:GLU:OE2	2.18	0.42
1:A:379:CYS:HB3	1:A:382:VAL:HG23	2.00	0.42
1:B:731:MET:HG2	1:B:774:GLN:OE1	2.19	0.42
1:C:134:GLN:N	1:C:162:SER:OG	2.53	0.42
1:C:433:VAL:HG12	1:C:512:VAL:HG22	2.01	0.42
1:C:490:PHE:CD1	1:C:491:PRO:HD2	2.55	0.42
1:B:203:ILE:HG22	1:B:226:LEU:HB3	2.01	0.42
1:C:659:SER:HB3	1:C:698:SER:OG	2.19	0.42
1:B:141:LEU:O	1:B:244:LEU:N	2.51	0.42
1:B:502:GLY:O	1:B:506:GLN:HG2	2.20	0.42
1:A:290:ASP:O	1:A:297:SER:HB2	2.19	0.42
1:A:418:ILE:HG23	1:A:422:ASN:HB2	2.02	0.42
1:B:501:TYR:CD2	1:B:505:TYR:HB2	2.55	0.42
1:A:124:THR:C	1:A:174:PRO:HA	2.40	0.42
1:A:316:SER:O	1:A:595:VAL:N	2.46	0.42
1:A:666:ILE:HD12	1:A:670:ILE:HG22	2.01	0.42
1:A:920:GLN:O	1:A:923:ILE:HG22	2.20	0.42
1:A:1083:HIS:CE1	1:A:1137:VAL:H	2.37	0.42
1:B:950:ASP:OD1	1:B:950:ASP:N	2.52	0.42
1:C:134:GLN:O	1:C:161:SER:N	2.53	0.42
1:C:456:PHE:HB3	1:C:473:TYR:CG	2.55	0.42
1:A:334:ASN:O	1:A:362:VAL:N	2.53	0.42
1:B:48:LEU:HB3	1:B:276:LEU:HD11	2.01	0.42
1:B:203:ILE:HD13	1:B:203:ILE:HA	1.86	0.42
1:B:794:ILE:HG22	1:B:796:ASP:H	1.85	0.42
1:B:994:ASP:HA	1:B:997:ILE:HG22	2.01	0.42
1:C:986:PRO:HB2	1:C:987:PRO:HD3	2.01	0.42
1:A:193:VAL:HG22	1:A:204:TYR:HB2	2.02	0.41
1:A:879:ALA:HA	1:A:882:ILE:HG22	2.02	0.41
1:B:152:TRP:CH2	1:B:245:HIS:HB3	2.55	0.41
1:B:195:LYS:O	1:B:202:LYS:N	2.44	0.41
1:B:747:THR:O	1:B:750:SER:OG	2.27	0.41
1:B:1084:ASP:HB2	1:B:1086:LYS:NZ	2.35	0.41
1:C:1010:GLN:HE22	1:C:1014:ARG:HH12	1.66	0.41
1:A:206:LYS:HZ2	1:A:208:THR:HG22	1.85	0.41
1:A:291:CYS:HB3	1:A:301:CYS:HB2	1.30	0.41
1:A:537:LYS:HD3	1:A:537:LYS:HA	1.78	0.41
1:A:581:THR:OG1	1:A:583:GLU:OE1	2.36	0.41
1:B:327:VAL:HG22	1:B:542:ASN:HB3	2.02	0.41
1:B:671:CYS:SG	1:B:697:MET:HE2	2.60	0.41

*Continued on next page...*



*Continued from previous page...*

Atom-1	Atom-2	Interatomic distance (Å)	Clash overlap (Å)
1:C:996:LEU:HD23	1:C:996:LEU:HA	1.90	0.41
1:A:47:VAL:HG12	1:C:569:ILE:HG13	2.01	0.41
1:A:91:TYR:HE1	1:A:191:GLU:HB3	1.85	0.41
1:B:89:GLY:C	1:B:270:LEU:HD13	2.41	0.41
1:B:294:ASP:O	1:B:297:SER:OG	2.21	0.41
1:C:327:VAL:N	1:C:531:THR:OG1	2.36	0.41
1:A:339:GLY:O	1:A:343:ASN:N	2.53	0.41
1:A:909:ILE:HG12	1:A:1047:TYR:HB3	2.01	0.41
1:C:1080:ALA:O	1:C:1132:ILE:HG13	2.21	0.41
1:A:128:ILE:HD13	1:A:170:TYR:CD2	2.55	0.41
1:B:143:VAL:HG22	1:B:154:GLU:HG2	2.02	0.41
1:C:196:ASN:OD1	1:C:196:ASN:O	2.38	0.41
1:C:327:VAL:HB	1:C:531:THR:HG23	2.01	0.41
1:A:905:ARG:HD3	1:A:1049:LEU:O	2.21	0.41
1:A:950:ASP:OD1	1:A:950:ASP:N	2.54	0.41
1:B:1036:GLN:HA	1:B:1048:HIS:CE1	2.56	0.41
1:C:106:PHE:HB3	1:C:235:ILE:HG21	2.02	0.41
1:C:227:VAL:HG12	1:C:229:LEU:HD22	2.02	0.41
1:C:409:GLN:OE1	1:C:418:ILE:HG12	2.21	0.41
1:C:580:GLN:O	3:C:1311:NAG:O6	2.36	0.41
1:A:904:TYR:CE2	1:C:1107:ARG:HD3	2.56	0.41
1:B:328:ARG:HG3	1:B:530:SER:HB2	2.02	0.41
1:C:135:PHE:CD1	1:C:160:TYR:HB3	2.56	0.41
1:C:919:ASN:O	1:C:923:ILE:HD12	2.20	0.41
1:A:287:ASP:OD1	1:A:288:ALA:N	2.53	0.41
1:A:346:ARG:HA	1:A:509:ARG:HH22	1.86	0.41
1:A:438:SER:O	1:A:507:PRO:HG2	2.20	0.41
1:A:905:ARG:NH1	1:A:1049:LEU:O	2.49	0.41
1:A:1114:ILE:O	1:A:1116:THR:HG23	2.21	0.41
1:C:280:ASN:ND2	1:C:282:ASN:HB2	2.36	0.41
1:A:280:ASN:OD1	1:A:283:GLY:N	2.54	0.41
1:A:1097:SER:HB2	1:A:1102:TRP:CE3	2.55	0.41
1:B:763:LEU:HD21	1:B:1005:GLN:OE1	2.20	0.41
1:B:912:THR:O	1:B:915:VAL:HG12	2.20	0.41
1:C:424:LYS:HZ1	1:C:463:PRO:HD3	1.86	0.41
1:C:717:ASN:HB2	1:C:1070:ALA:HB3	2.03	0.41
1:B:189:LEU:HG	1:B:191:GLU:OE1	2.21	0.41
1:C:416:GLY:O	1:C:420:ASP:N	2.54	0.41
1:C:866:THR:H	1:C:869:MET:HE3	1.85	0.41
1:B:122:ASN:HB3	1:B:125:ASN:O	2.20	0.40
1:B:759:PHE:O	1:B:763:LEU:HD23	2.20	0.40

*Continued on next page...*

Continued from previous page...

Atom-1	Atom-2	Interatomic distance (Å)	Clash overlap (Å)
1:B:1088:HIS:HD1	1:B:1120:THR:HG21	1.86	0.40
1:C:129:LYS:HG3	1:C:169:GLU:OE2	2.21	0.40
1:C:340:GLU:N	1:C:340:GLU:OE1	2.52	0.40
1:C:405:ASP:N	1:C:504:GLY:O	2.54	0.40
1:C:763:LEU:HD13	1:C:763:LEU:HA	1.90	0.40
1:C:1120:THR:OG1	1:C:1121:PHE:N	2.54	0.40
1:A:437:ASN:HA	1:A:508:TYR:CD1	2.56	0.40
1:B:125:ASN:OD1	1:B:126:VAL:N	2.54	0.40
1:B:713:ALA:HB3	1:C:894:LEU:HB3	2.03	0.40
1:B:877:LEU:HD23	1:B:877:LEU:HA	1.90	0.40
1:A:328:ARG:HH12	1:A:533:LEU:HD12	1.86	0.40
1:A:713:ALA:HB3	1:B:894:LEU:HB3	2.03	0.40
1:B:106:PHE:HE2	1:B:119:ILE:HG13	1.86	0.40
1:B:290:ASP:OD1	1:B:291:CYS:N	2.55	0.40
1:B:497:PHE:CD2	1:B:507:PRO:HB3	2.55	0.40
1:B:730:SER:O	1:B:1058:HIS:HB3	2.21	0.40
1:B:806:LEU:HD23	1:B:806:LEU:HA	1.92	0.40
1:C:1072:GLU:OE1	1:C:1072:GLU:N	2.54	0.40
1:A:24:LEU:HD23	1:A:25:PRO:O	2.21	0.40
1:A:96:GLU:HB2	1:A:187:LYS:HZ3	1.86	0.40
1:A:962:LEU:HD21	1:A:1007:TYR:HB2	2.03	0.40
1:B:96:GLU:OE2	1:B:100:ILE:N	2.55	0.40
1:B:905:ARG:CZ	1:B:1050:MET:HB3	2.51	0.40
1:B:353:TRP:HZ3	1:B:355:ARG:HB2	1.86	0.40
1:B:962:LEU:HD23	1:B:962:LEU:HA	1.89	0.40
1:C:131:CYS:HB2	1:C:133:PHE:CE1	2.57	0.40
1:C:327:VAL:HG13	1:C:542:ASN:HD21	1.85	0.40
1:C:474:GLN:HA	1:C:480:CYS:SG	2.62	0.40

There are no symmetry-related clashes.

## 5.3 Torsion angles [\(i\)](#)

### 5.3.1 Protein backbone [\(i\)](#)

In the following table, the Percentiles column shows the percent Ramachandran outliers of the chain as a percentile score with respect to all PDB entries followed by that with respect to all EM entries.

The Analysed column shows the number of residues for which the backbone conformation was analysed, and the total number of residues.

Mol	Chain	Analysed	Favoured	Allowed	Outliers	Percentiles	
1	A	963/1284 (75%)	902 (94%)	61 (6%)	0	100	100
1	B	1002/1284 (78%)	945 (94%)	57 (6%)	0	100	100
1	C	977/1284 (76%)	914 (94%)	63 (6%)	0	100	100
All	All	2942/3852 (76%)	2761 (94%)	181 (6%)	0	100	100

There are no Ramachandran outliers to report.

### 5.3.2 Protein sidechains [i](#)

In the following table, the Percentiles column shows the percent sidechain outliers of the chain as a percentile score with respect to all PDB entries followed by that with respect to all EM entries.

The Analysed column shows the number of residues for which the sidechain conformation was analysed, and the total number of residues.

Mol	Chain	Analysed	Rotameric	Outliers	Percentiles	
1	A	861/1112 (77%)	860 (100%)	1 (0%)	93	97
1	B	891/1112 (80%)	891 (100%)	0	100	100
1	C	872/1112 (78%)	870 (100%)	2 (0%)	93	96
All	All	2624/3336 (79%)	2621 (100%)	3 (0%)	93	97

All (3) residues with a non-rotameric sidechain are listed below:

Mol	Chain	Res	Type
1	A	921	LYS
1	C	310	LYS
1	C	786	LYS

Sometimes sidechains can be flipped to improve hydrogen bonding and reduce clashes. All (9) such sidechains are listed below:

Mol	Chain	Res	Type
1	A	1083	HIS
1	B	439	ASN
1	B	506	GLN
1	B	895	GLN
1	B	955	ASN
1	C	658	ASN
1	C	955	ASN

*Continued on next page...*

*Continued from previous page...*

Mol	Chain	Res	Type
1	C	992	GLN
1	C	1083	HIS

### 5.3.3 RNA [i](#)

There are no RNA molecules in this entry.

### 5.4 Non-standard residues in protein, DNA, RNA chains [i](#)

There are no non-standard protein/DNA/RNA residues in this entry.

### 5.5 Carbohydrates [i](#)

6 monosaccharides are modelled in this entry.

In the following table, the Counts columns list the number of bonds (or angles) for which Mogul statistics could be retrieved, the number of bonds (or angles) that are observed in the model and the number of bonds (or angles) that are defined in the Chemical Component Dictionary. The Link column lists molecule types, if any, to which the group is linked. The Z score for a bond length (or angle) is the number of standard deviations the observed value is removed from the expected value. A bond length (or angle) with  $|Z| > 2$  is considered an outlier worth inspection. RMSZ is the root-mean-square of all Z scores of the bond lengths (or angles).

Mol	Type	Chain	Res	Link	Bond lengths			Bond angles		
					Counts	RMSZ	# Z  > 2	Counts	RMSZ	# Z  > 2
2	NAG	D	1	1,2	14,14,15	0.18	0	17,19,21	0.46	0
2	NAG	D	2	2	14,14,15	0.53	0	17,19,21	0.43	0
2	NAG	E	1	1,2	14,14,15	0.26	0	17,19,21	0.41	0
2	NAG	E	2	2	14,14,15	0.25	0	17,19,21	0.53	0
2	NAG	F	1	1,2	14,14,15	0.20	0	17,19,21	0.56	0
2	NAG	F	2	2	14,14,15	0.51	0	17,19,21	0.42	0

In the following table, the Chirals column lists the number of chiral outliers, the number of chiral centers analysed, the number of these observed in the model and the number defined in the Chemical Component Dictionary. Similar counts are reported in the Torsion and Rings columns. '-' means no outliers of that kind were identified.

Mol	Type	Chain	Res	Link	Chirals	Torsions	Rings
2	NAG	D	1	1,2	-	0/6/23/26	0/1/1/1
2	NAG	D	2	2	-	2/6/23/26	0/1/1/1
2	NAG	E	1	1,2	-	1/6/23/26	0/1/1/1

*Continued on next page...*

*Continued from previous page...*

Mol	Type	Chain	Res	Link	Chirals	Torsions	Rings
2	NAG	E	2	2	-	3/6/23/26	0/1/1/1
2	NAG	F	1	1,2	-	4/6/23/26	0/1/1/1
2	NAG	F	2	2	-	2/6/23/26	0/1/1/1

There are no bond length outliers.

There are no bond angle outliers.

There are no chirality outliers.

All (12) torsion outliers are listed below:

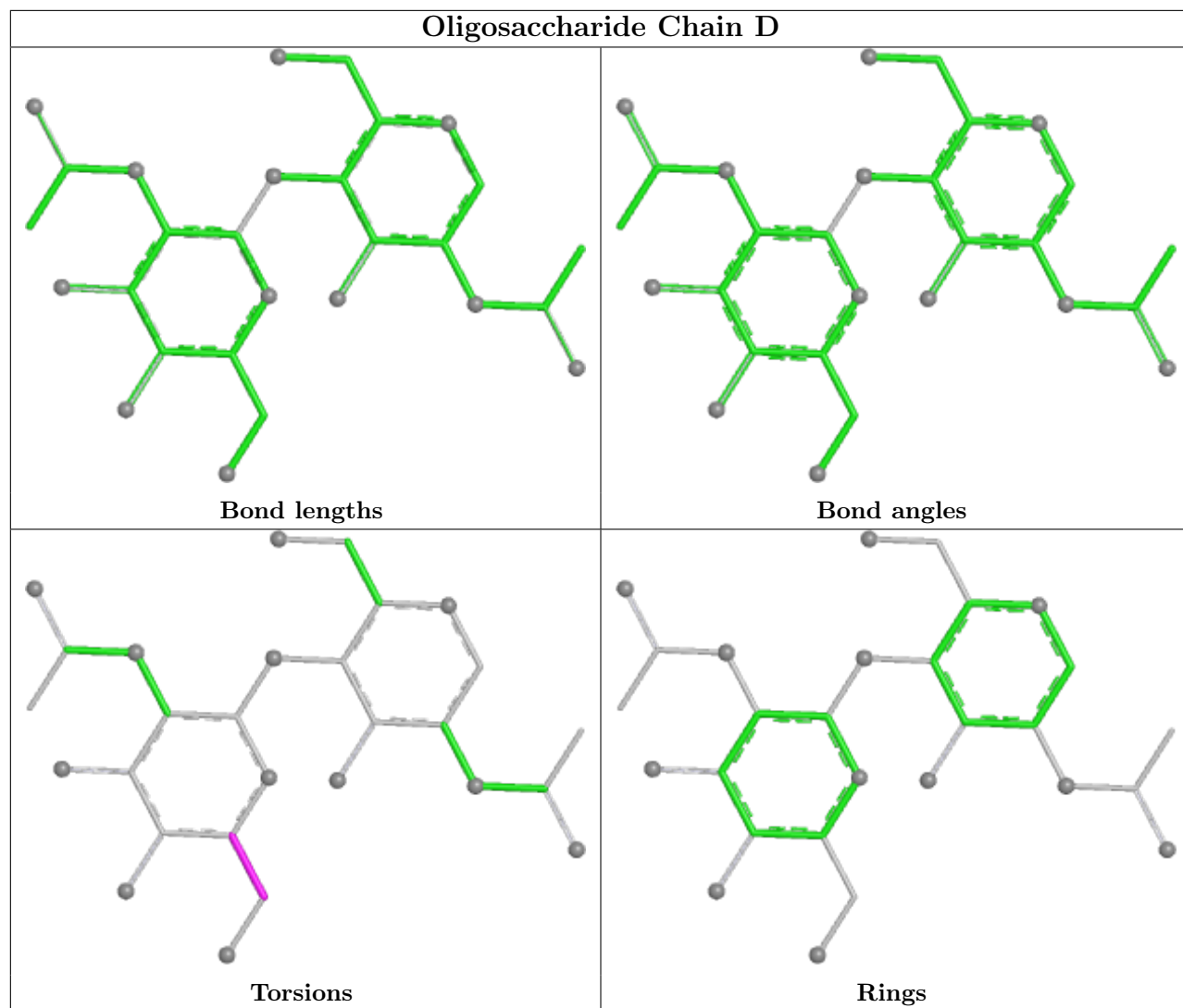
Mol	Chain	Res	Type	Atoms
2	D	2	NAG	O5-C5-C6-O6
2	F	1	NAG	C8-C7-N2-C2
2	F	1	NAG	O7-C7-N2-C2
2	D	2	NAG	C4-C5-C6-O6
2	F	2	NAG	O5-C5-C6-O6
2	E	2	NAG	C4-C5-C6-O6
2	F	1	NAG	C4-C5-C6-O6
2	E	2	NAG	O5-C5-C6-O6
2	F	1	NAG	O5-C5-C6-O6
2	E	2	NAG	C3-C2-N2-C7
2	F	2	NAG	C1-C2-N2-C7
2	E	1	NAG	C4-C5-C6-O6

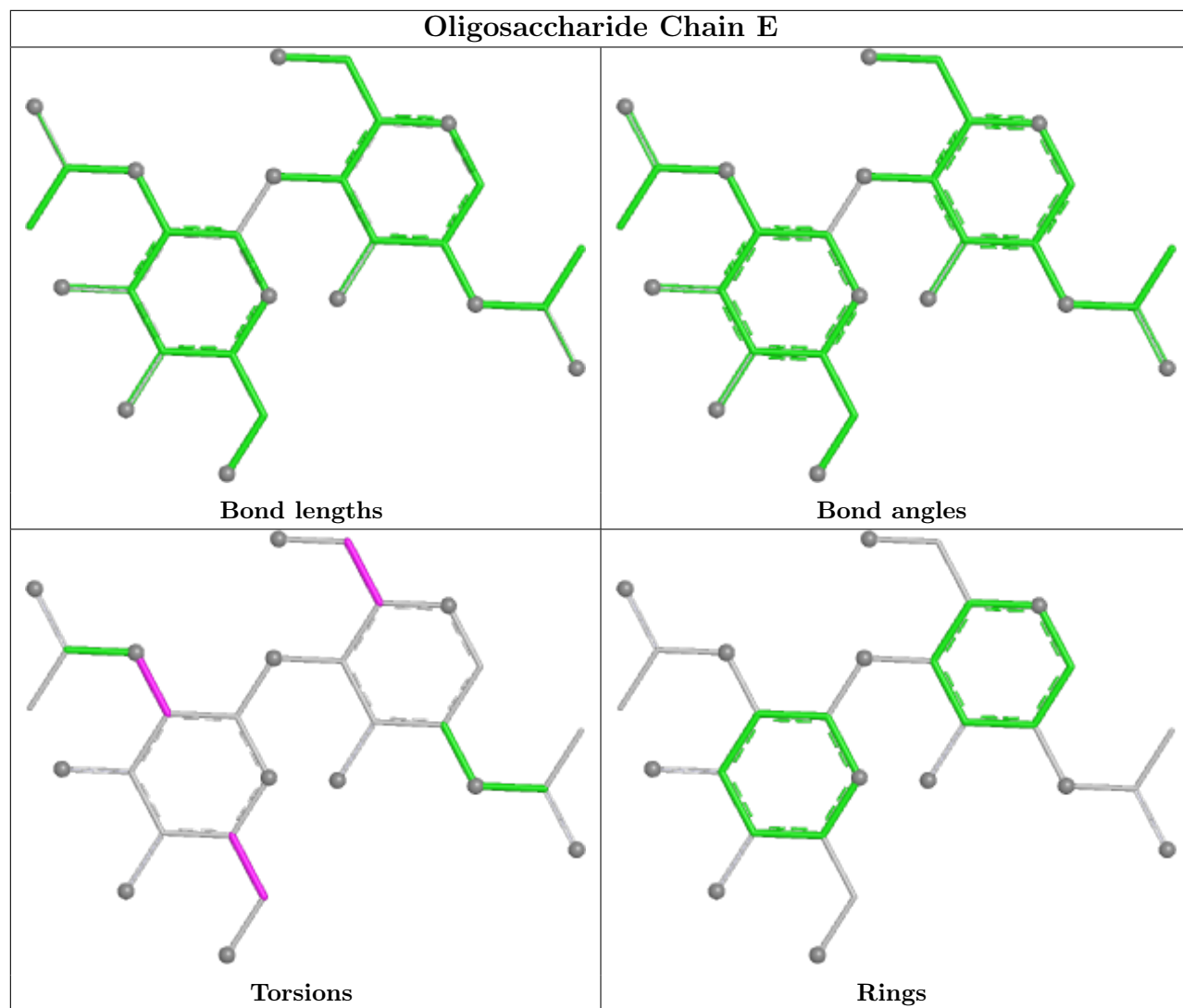
There are no ring outliers.

4 monomers are involved in 4 short contacts:

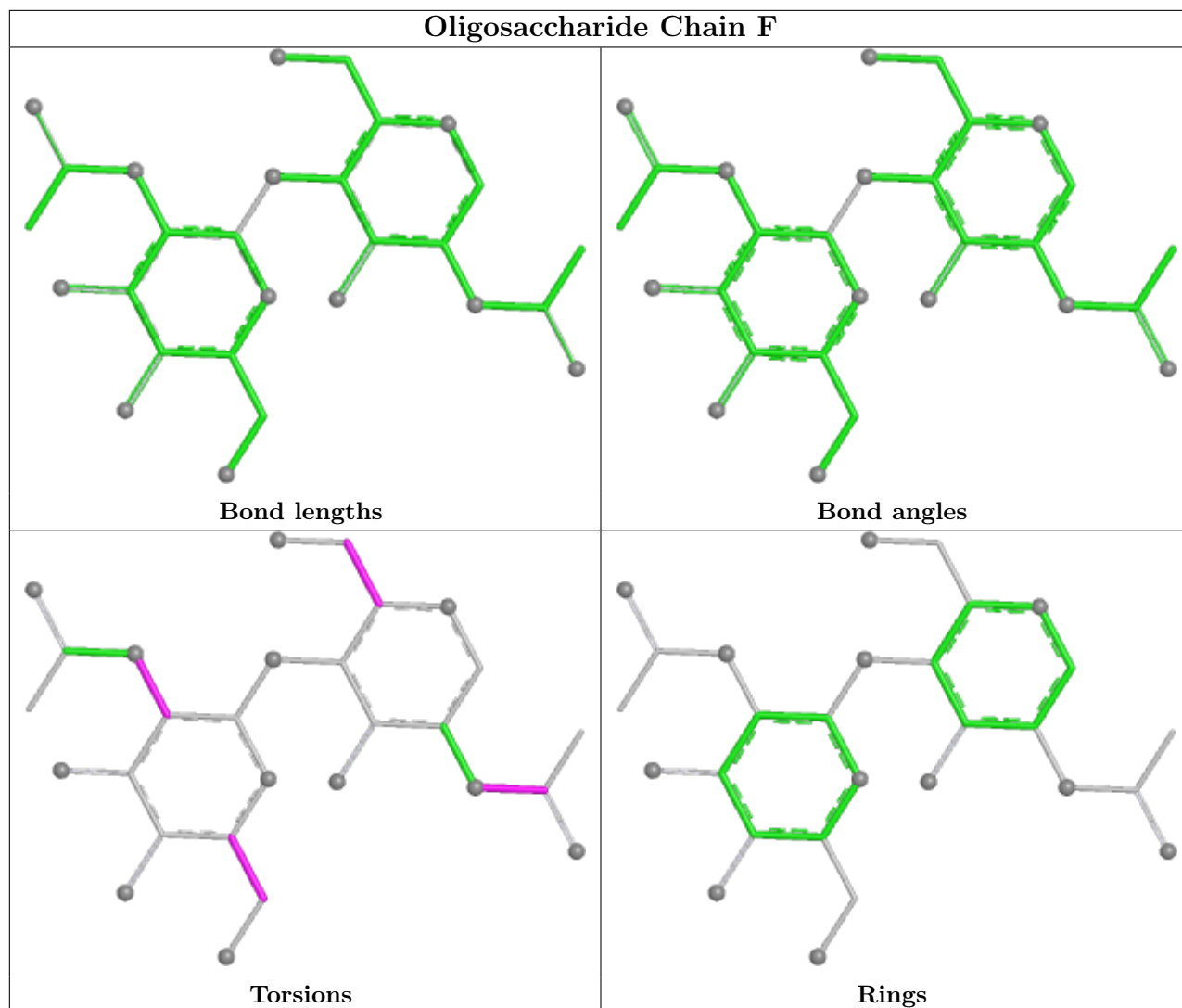
Mol	Chain	Res	Type	Clashes	Symm-Clashes
2	D	2	NAG	1	0
2	F	1	NAG	1	0
2	F	2	NAG	1	0
2	D	1	NAG	3	0

The following is a two-dimensional graphical depiction of Mogul quality analysis of bond lengths, bond angles, torsion angles, and ring geometry for oligosaccharide.









## 5.6 Ligand geometry [i](#)

37 ligands are modelled in this entry.

In the following table, the Counts columns list the number of bonds (or angles) for which Mogul statistics could be retrieved, the number of bonds (or angles) that are observed in the model and the number of bonds (or angles) that are defined in the Chemical Component Dictionary. The Link column lists molecule types, if any, to which the group is linked. The Z score for a bond length (or angle) is the number of standard deviations the observed value is removed from the expected value. A bond length (or angle) with  $|Z| > 2$  is considered an outlier worth inspection. RMSZ is the root-mean-square of all Z scores of the bond lengths (or angles).

Mol	Type	Chain	Res	Link	Bond lengths			Bond angles		
					Counts	RMSZ	$\# Z  > 2$	Counts	RMSZ	$\# Z  > 2$
3	NAG	C	1303	1	14,14,15	0.17	0	17,19,21	0.43	0
3	NAG	A	1309	1	14,14,15	0.19	0	17,19,21	0.46	0
3	NAG	B	1306	1	14,14,15	0.20	0	17,19,21	0.44	0

Mol	Type	Chain	Res	Link	Bond lengths			Bond angles		
					Counts	RMSZ	# Z  > 2	Counts	RMSZ	# Z  > 2
3	NAG	A	1310	1	14,14,15	0.22	0	17,19,21	0.51	0
3	NAG	C	1306	1	14,14,15	0.21	0	17,19,21	0.43	0
3	NAG	A	1308	1	14,14,15	0.21	0	17,19,21	0.34	0
3	NAG	C	1304	1	14,14,15	0.23	0	17,19,21	0.42	0
3	NAG	C	1312	1	14,14,15	0.42	0	17,19,21	0.37	0
3	NAG	A	1303	1	14,14,15	0.17	0	17,19,21	0.39	0
3	NAG	A	1305	1	14,14,15	0.20	0	17,19,21	0.46	0
3	NAG	B	1305	1	14,14,15	0.21	0	17,19,21	0.48	0
3	NAG	B	1302	1	14,14,15	0.20	0	17,19,21	0.44	0
3	NAG	C	1308	1	14,14,15	0.19	0	17,19,21	0.44	0
3	NAG	B	1301	1	14,14,15	0.20	0	17,19,21	0.42	0
3	NAG	A	1304	1	14,14,15	0.21	0	17,19,21	0.41	0
3	NAG	B	1303	1	14,14,15	0.19	0	17,19,21	0.45	0
3	NAG	C	1311	1	14,14,15	0.23	0	17,19,21	0.35	0
3	NAG	C	1310	1	14,14,15	0.23	0	17,19,21	0.48	0
3	NAG	C	1302	1	14,14,15	0.21	0	17,19,21	0.41	0
3	NAG	A	1306	1	14,14,15	0.21	0	17,19,21	0.44	0
3	NAG	C	1305	1	14,14,15	0.23	0	17,19,21	0.48	0
3	NAG	C	1309	1	14,14,15	0.21	0	17,19,21	0.47	0
3	NAG	B	1309	1	14,14,15	0.23	0	17,19,21	0.41	0
3	NAG	C	1307	1	14,14,15	0.90	1 (7%)	17,19,21	1.31	1 (5%)
3	NAG	B	1308	1	14,14,15	0.19	0	17,19,21	0.42	0
3	NAG	A	1301	1	14,14,15	0.20	0	17,19,21	0.44	0
3	NAG	C	1313	1	14,14,15	0.30	0	17,19,21	0.36	0
3	NAG	B	1311	1	14,14,15	0.73	1 (7%)	17,19,21	0.79	1 (5%)
3	NAG	B	1310	1	14,14,15	0.20	0	17,19,21	0.45	0
3	NAG	A	1311	1	14,14,15	0.17	0	17,19,21	0.44	0
3	NAG	C	1301	1	14,14,15	0.22	0	17,19,21	0.44	0
3	NAG	B	1307	1	14,14,15	0.20	0	17,19,21	0.44	0
3	NAG	A	1307	1	14,14,15	0.18	0	17,19,21	0.42	0
3	NAG	B	1313	1	14,14,15	0.23	0	17,19,21	0.36	0
3	NAG	A	1302	1	14,14,15	0.20	0	17,19,21	0.49	0
3	NAG	B	1304	1	14,14,15	0.20	0	17,19,21	0.40	0
3	NAG	B	1312	1	14,14,15	0.26	0	17,19,21	0.59	1 (5%)

In the following table, the Chirals column lists the number of chiral outliers, the number of chiral centers analysed, the number of these observed in the model and the number defined in the Chemical Component Dictionary. Similar counts are reported in the Torsion and Rings columns. '-' means no outliers of that kind were identified.

Mol	Type	Chain	Res	Link	Chirals	Torsions	Rings
3	NAG	C	1303	1	-	0/6/23/26	0/1/1/1

*Continued on next page...*

*Continued from previous page...*

Mol	Type	Chain	Res	Link	Chirals	Torsions	Rings
3	NAG	A	1309	1	-	4/6/23/26	0/1/1/1
3	NAG	B	1306	1	-	0/6/23/26	0/1/1/1
3	NAG	A	1310	1	-	3/6/23/26	0/1/1/1
3	NAG	C	1306	1	-	2/6/23/26	0/1/1/1
3	NAG	A	1308	1	-	2/6/23/26	0/1/1/1
3	NAG	C	1304	1	-	2/6/23/26	0/1/1/1
3	NAG	C	1312	1	-	4/6/23/26	0/1/1/1
3	NAG	A	1303	1	-	2/6/23/26	0/1/1/1
3	NAG	A	1305	1	-	0/6/23/26	0/1/1/1
3	NAG	B	1305	1	-	2/6/23/26	0/1/1/1
3	NAG	B	1302	1	-	4/6/23/26	0/1/1/1
3	NAG	C	1308	1	-	2/6/23/26	0/1/1/1
3	NAG	B	1301	1	-	0/6/23/26	0/1/1/1
3	NAG	A	1304	1	-	1/6/23/26	0/1/1/1
3	NAG	B	1303	1	-	0/6/23/26	0/1/1/1
3	NAG	C	1311	1	-	2/6/23/26	0/1/1/1
3	NAG	C	1310	1	-	2/6/23/26	0/1/1/1
3	NAG	C	1302	1	-	4/6/23/26	0/1/1/1
3	NAG	A	1306	1	-	2/6/23/26	0/1/1/1
3	NAG	C	1305	1	-	1/6/23/26	0/1/1/1
3	NAG	C	1309	1	-	0/6/23/26	0/1/1/1
3	NAG	B	1309	1	-	2/6/23/26	0/1/1/1
3	NAG	C	1307	1	-	2/6/23/26	0/1/1/1
3	NAG	B	1308	1	-	2/6/23/26	0/1/1/1
3	NAG	A	1301	1	-	2/6/23/26	0/1/1/1
3	NAG	C	1313	1	-	4/6/23/26	0/1/1/1
3	NAG	B	1311	1	-	3/6/23/26	0/1/1/1
3	NAG	B	1310	1	-	0/6/23/26	0/1/1/1
3	NAG	A	1311	1	-	2/6/23/26	0/1/1/1
3	NAG	C	1301	1	-	2/6/23/26	0/1/1/1
3	NAG	B	1307	1	-	2/6/23/26	0/1/1/1
3	NAG	A	1307	1	-	2/6/23/26	0/1/1/1
3	NAG	B	1313	1	-	4/6/23/26	0/1/1/1
3	NAG	A	1302	1	-	0/6/23/26	0/1/1/1
3	NAG	B	1304	1	-	2/6/23/26	0/1/1/1
3	NAG	B	1312	1	-	2/6/23/26	0/1/1/1

All (2) bond length outliers are listed below:

Mol	Chain	Res	Type	Atoms	Z	Observed(Å)	Ideal(Å)
3	C	1307	NAG	O5-C1	3.25	1.48	1.43
3	B	1311	NAG	C1-C2	2.41	1.55	1.52

All (3) bond angle outliers are listed below:

Mol	Chain	Res	Type	Atoms	Z	Observed( $^{\circ}$ )	Ideal( $^{\circ}$ )
3	C	1307	NAG	C1-O5-C5	5.12	119.13	112.19
3	B	1311	NAG	C1-O5-C5	2.72	115.88	112.19
3	B	1312	NAG	C1-O5-C5	2.05	114.97	112.19

There are no chirality outliers.

All (70) torsion outliers are listed below:

Mol	Chain	Res	Type	Atoms
3	A	1310	NAG	C4-C5-C6-O6
3	C	1307	NAG	C4-C5-C6-O6
3	B	1307	NAG	O5-C5-C6-O6
3	A	1306	NAG	C4-C5-C6-O6
3	A	1301	NAG	O5-C5-C6-O6
3	A	1310	NAG	O5-C5-C6-O6
3	B	1309	NAG	O5-C5-C6-O6
3	C	1301	NAG	O5-C5-C6-O6
3	C	1306	NAG	C4-C5-C6-O6
3	A	1306	NAG	O5-C5-C6-O6
3	B	1313	NAG	O5-C5-C6-O6
3	C	1304	NAG	O5-C5-C6-O6
3	C	1307	NAG	O5-C5-C6-O6
3	C	1312	NAG	O5-C5-C6-O6
3	A	1307	NAG	C4-C5-C6-O6
3	B	1305	NAG	C4-C5-C6-O6
3	A	1311	NAG	O5-C5-C6-O6
3	B	1302	NAG	O5-C5-C6-O6
3	C	1313	NAG	O5-C5-C6-O6
3	B	1309	NAG	C4-C5-C6-O6
3	C	1308	NAG	O5-C5-C6-O6
3	B	1307	NAG	C4-C5-C6-O6
3	B	1313	NAG	C4-C5-C6-O6
3	C	1301	NAG	C4-C5-C6-O6
3	C	1312	NAG	C4-C5-C6-O6
3	A	1308	NAG	O5-C5-C6-O6
3	B	1304	NAG	O5-C5-C6-O6

*Continued on next page...*

*Continued from previous page...*

Mol	Chain	Res	Type	Atoms
3	B	1312	NAG	O5-C5-C6-O6
3	A	1307	NAG	O5-C5-C6-O6
3	C	1306	NAG	O5-C5-C6-O6
3	B	1305	NAG	O5-C5-C6-O6
3	A	1301	NAG	C4-C5-C6-O6
3	A	1311	NAG	C4-C5-C6-O6
3	C	1302	NAG	C4-C5-C6-O6
3	B	1304	NAG	C4-C5-C6-O6
3	C	1304	NAG	C4-C5-C6-O6
3	B	1308	NAG	O5-C5-C6-O6
3	A	1309	NAG	C4-C5-C6-O6
3	A	1303	NAG	C8-C7-N2-C2
3	A	1303	NAG	O7-C7-N2-C2
3	A	1309	NAG	C8-C7-N2-C2
3	A	1309	NAG	O7-C7-N2-C2
3	B	1302	NAG	C8-C7-N2-C2
3	B	1302	NAG	O7-C7-N2-C2
3	B	1313	NAG	C8-C7-N2-C2
3	B	1313	NAG	O7-C7-N2-C2
3	C	1302	NAG	C8-C7-N2-C2
3	C	1302	NAG	O7-C7-N2-C2
3	C	1312	NAG	C8-C7-N2-C2
3	C	1312	NAG	O7-C7-N2-C2
3	A	1308	NAG	C4-C5-C6-O6
3	B	1312	NAG	C4-C5-C6-O6
3	C	1310	NAG	C4-C5-C6-O6
3	B	1311	NAG	C4-C5-C6-O6
3	B	1302	NAG	C4-C5-C6-O6
3	C	1313	NAG	C4-C5-C6-O6
3	B	1311	NAG	O5-C5-C6-O6
3	C	1308	NAG	C4-C5-C6-O6
3	C	1310	NAG	O5-C5-C6-O6
3	C	1302	NAG	O5-C5-C6-O6
3	C	1313	NAG	C1-C2-N2-C7
3	A	1309	NAG	O5-C5-C6-O6
3	C	1311	NAG	C4-C5-C6-O6
3	C	1311	NAG	O5-C5-C6-O6
3	B	1308	NAG	C4-C5-C6-O6
3	A	1310	NAG	C3-C2-N2-C7
3	B	1311	NAG	C3-C2-N2-C7
3	C	1305	NAG	C4-C5-C6-O6
3	A	1304	NAG	C4-C5-C6-O6

*Continued on next page...*

*Continued from previous page...*

Mol	Chain	Res	Type	Atoms
3	C	1313	NAG	C3-C2-N2-C7

There are no ring outliers.

5 monomers are involved in 7 short contacts:

Mol	Chain	Res	Type	Clashes	Symm-Clashes
3	A	1308	NAG	1	0
3	C	1312	NAG	2	0
3	C	1311	NAG	1	0
3	B	1311	NAG	2	0
3	A	1311	NAG	1	0

## 5.7 Other polymers [i](#)

There are no such residues in this entry.

## 5.8 Polymer linkage issues [i](#)

There are no chain breaks in this entry.

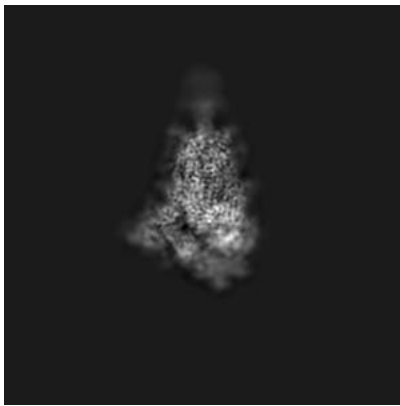
## 6 Map visualisation [i](#)

This section contains visualisations of the EMDB entry EMD-14231. These allow visual inspection of the internal detail of the map and identification of artifacts.

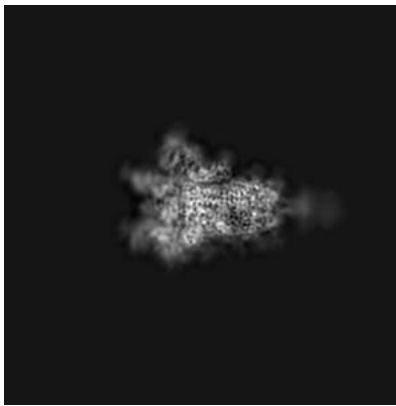
Images derived from a raw map, generated by summing the deposited half-maps, are presented below the corresponding image components of the primary map to allow further visual inspection and comparison with those of the primary map.

### 6.1 Orthogonal projections [i](#)

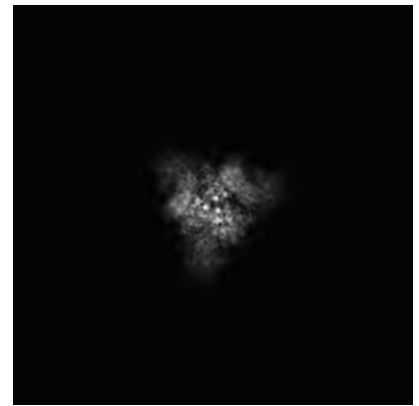
#### 6.1.1 Primary map



X

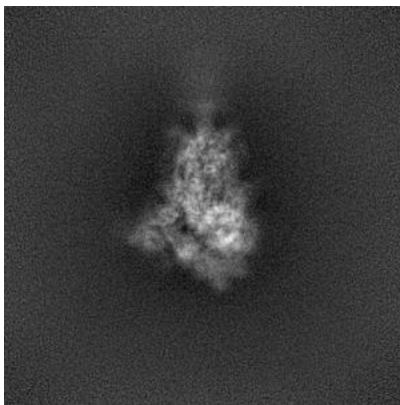


Y

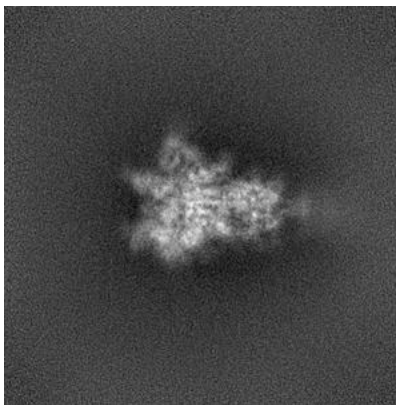


Z

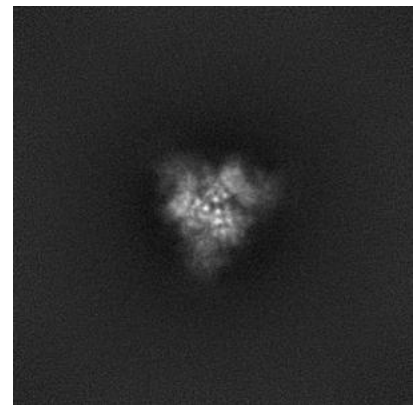
#### 6.1.2 Raw map



X



Y



Z

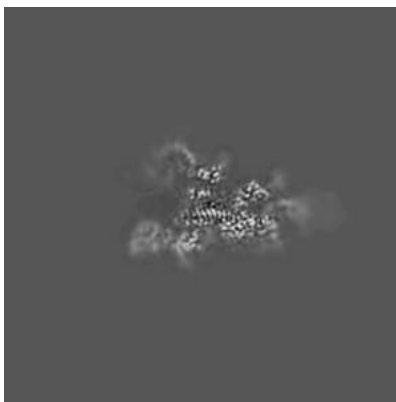
The images above show the map projected in three orthogonal directions.

## 6.2 Central slices [i](#)

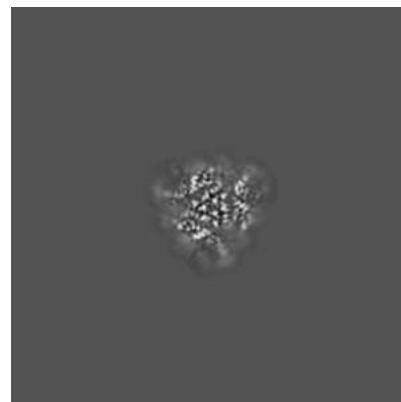
### 6.2.1 Primary map



X Index: 200



Y Index: 200

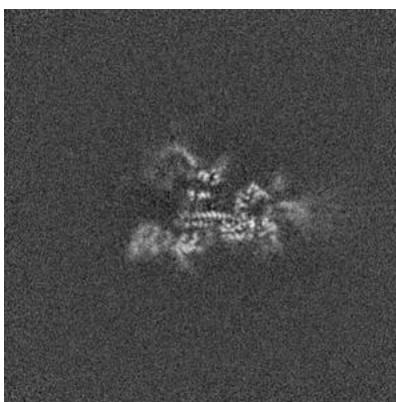


Z Index: 200

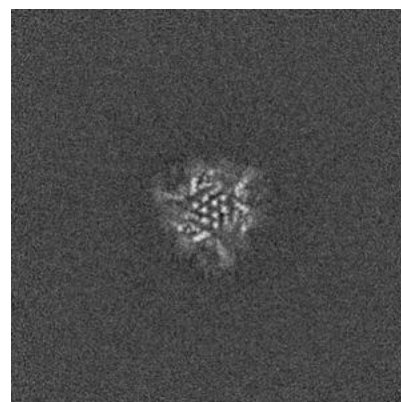
### 6.2.2 Raw map



X Index: 200



Y Index: 200



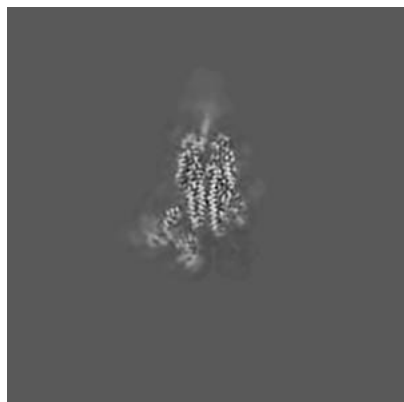
Z Index: 200

The images above show central slices of the map in three orthogonal directions.



## 6.3 Largest variance slices [i](#)

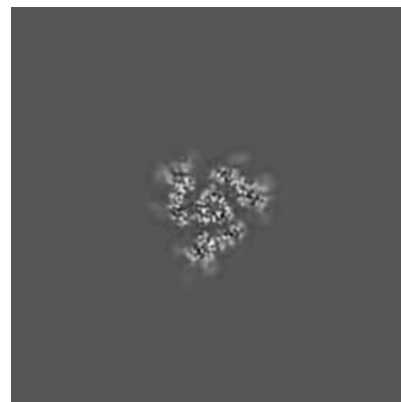
### 6.3.1 Primary map



X Index: 203

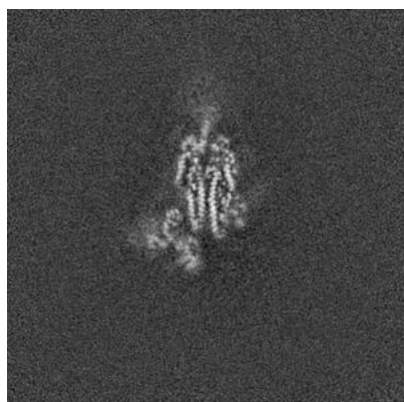


Y Index: 193



Z Index: 186

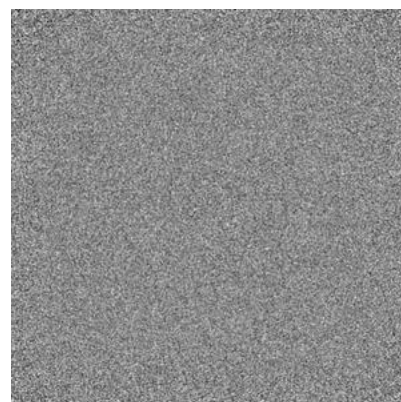
### 6.3.2 Raw map



X Index: 203



Y Index: 194

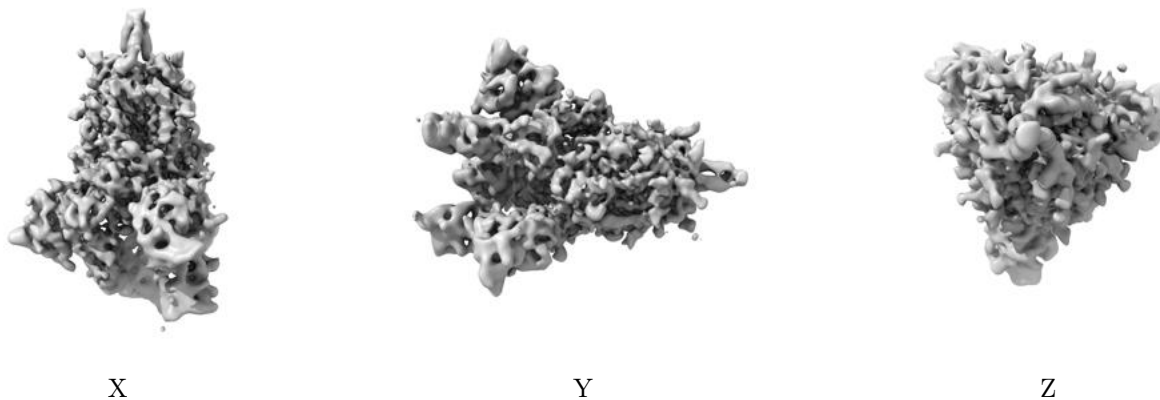


Z Index: 0

The images above show the largest variance slices of the map in three orthogonal directions.

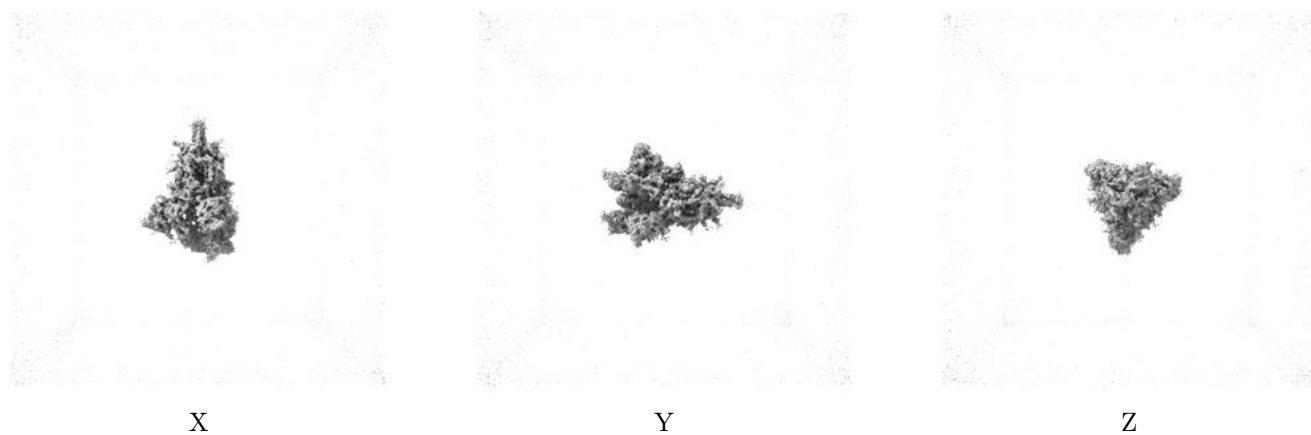
## 6.4 Orthogonal surface views [i](#)

### 6.4.1 Primary map



The images above show the 3D surface view of the map at the recommended contour level 0.5. These images, in conjunction with the slice images, may facilitate assessment of whether an appropriate contour level has been provided.

### 6.4.2 Raw map



These images show the 3D surface of the raw map. The raw map's contour level was selected so that its surface encloses the same volume as the primary map does at its recommended contour level.

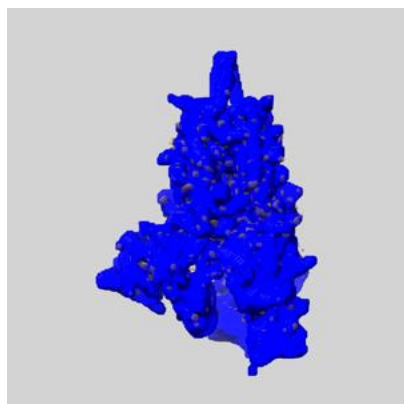
## 6.5 Mask visualisation [i](#)

This section shows the 3D surface view of the primary map at 50% transparency overlaid with the specified mask at 0% transparency

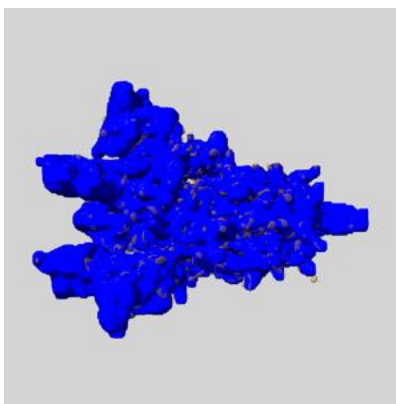
A mask typically either:

- Encompasses the whole structure
- Separates out a domain, a functional unit, a monomer or an area of interest from a larger structure

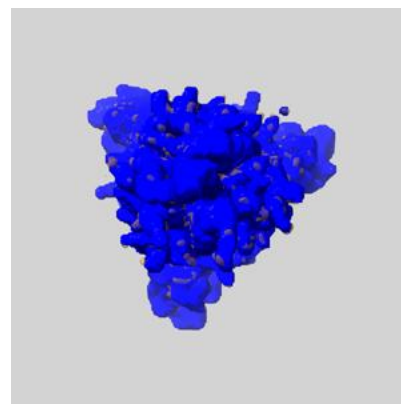
### 6.5.1 emd\_14231\_msk\_1.map [i](#)



X



Y

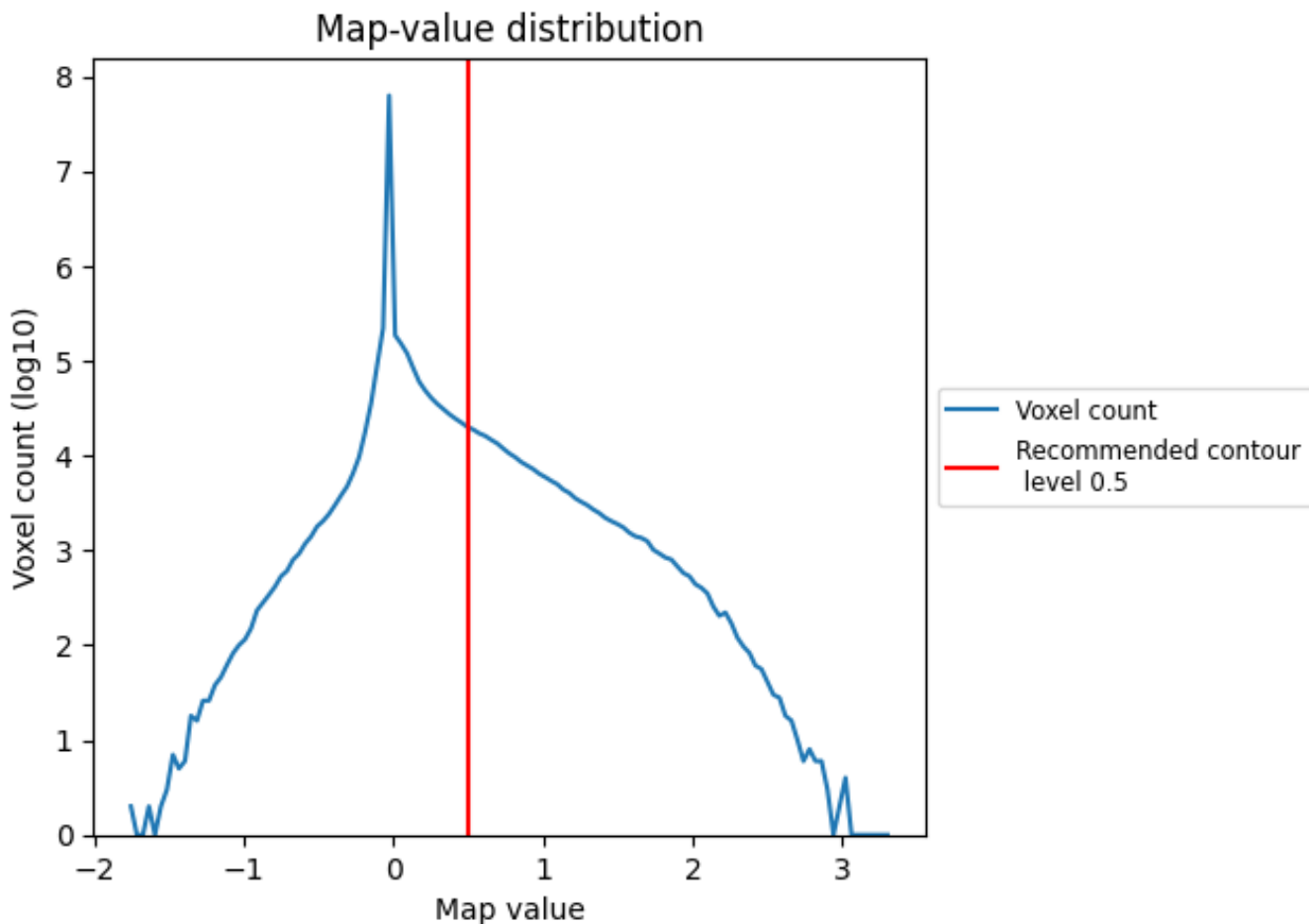


Z

## 7 Map analysis [i](#)

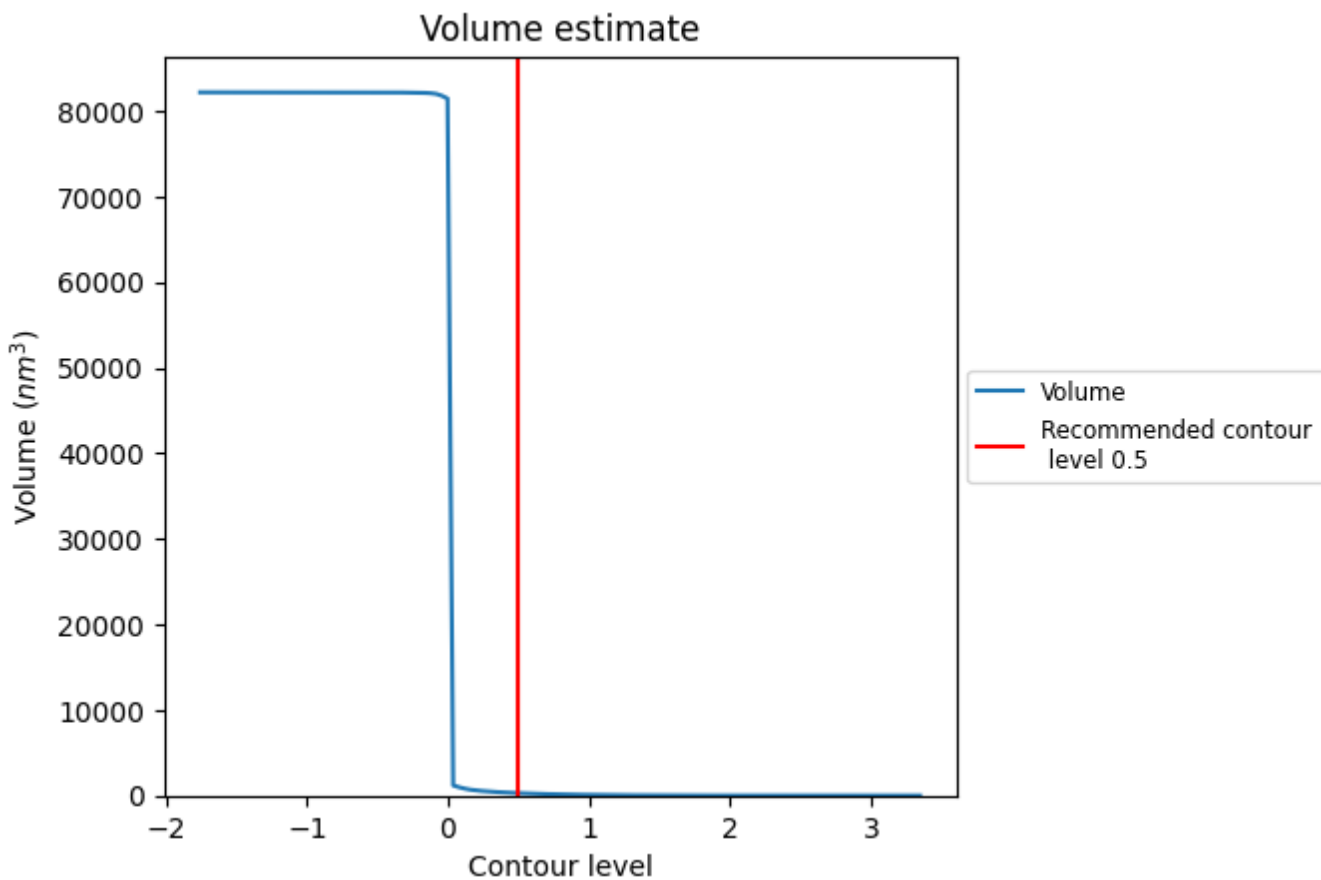
This section contains the results of statistical analysis of the map.

### 7.1 Map-value distribution [i](#)



The map-value distribution is plotted in 128 intervals along the x-axis. The y-axis is logarithmic. A spike in this graph at zero usually indicates that the volume has been masked.

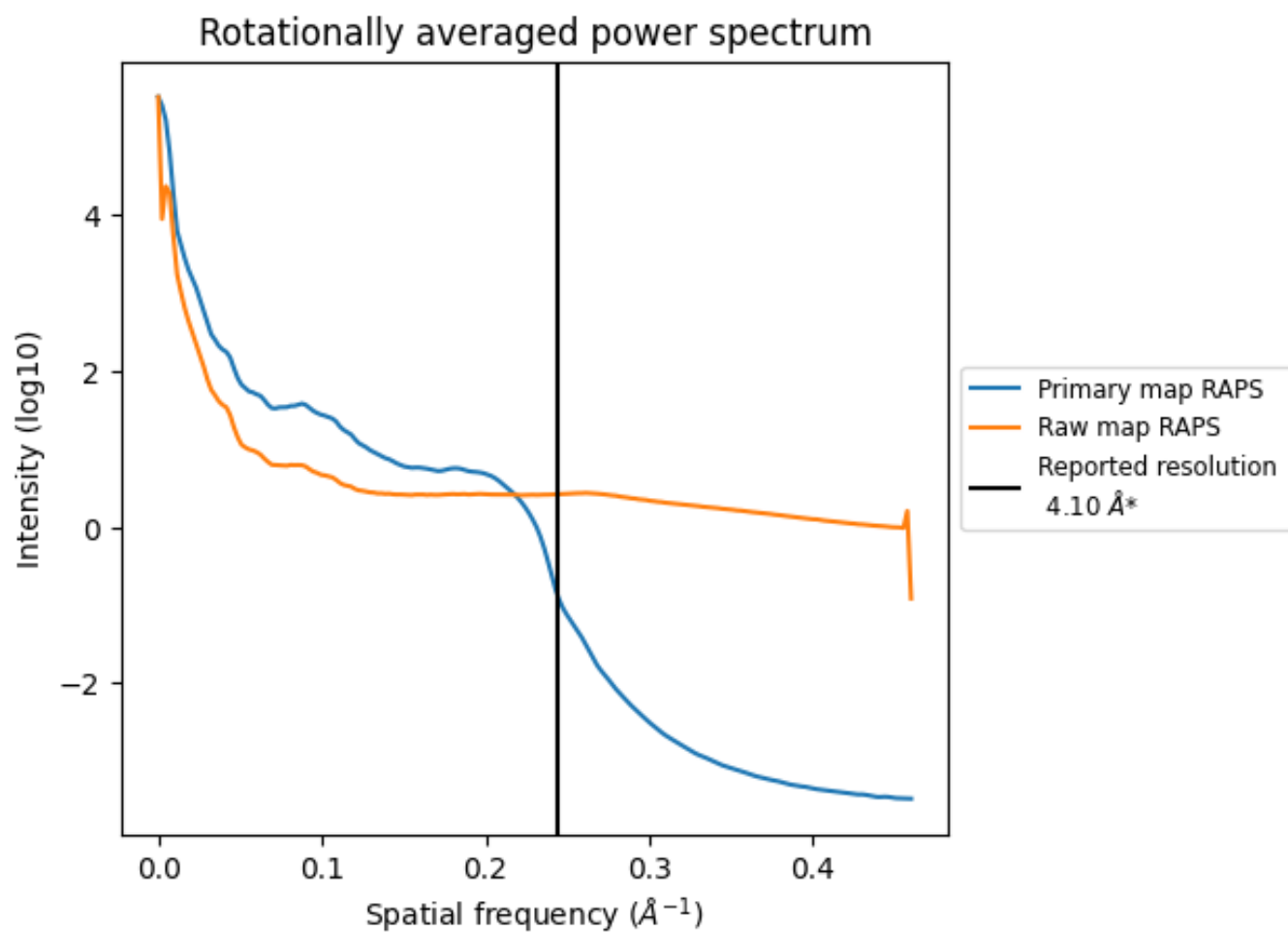
## 7.2 Volume estimate [i](#)



The volume at the recommended contour level is 283 nm<sup>3</sup>; this corresponds to an approximate mass of 255 kDa.

The volume estimate graph shows how the enclosed volume varies with the contour level. The recommended contour level is shown as a vertical line and the intersection between the line and the curve gives the volume of the enclosed surface at the given level.

### 7.3 Rotationally averaged power spectrum i

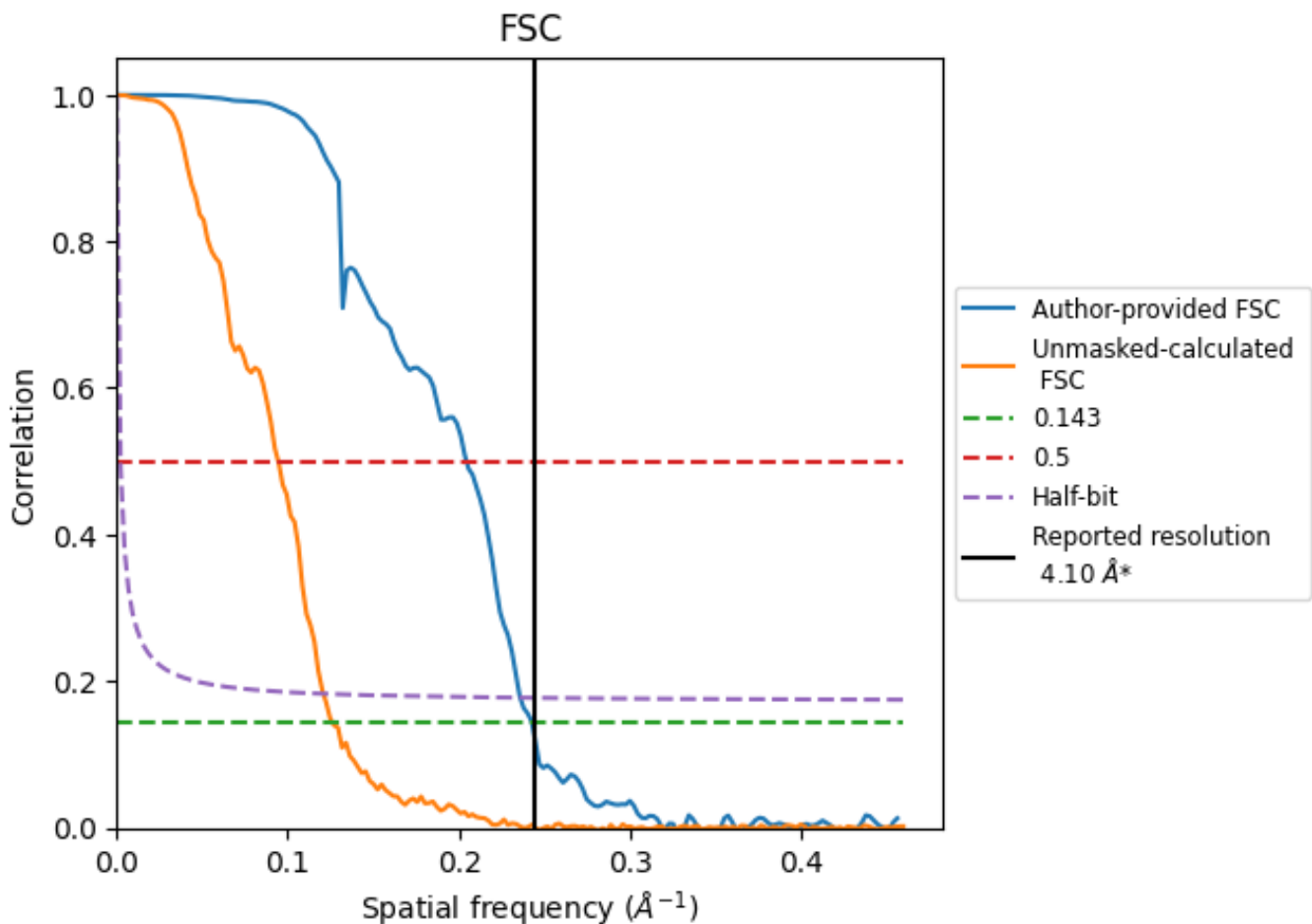


\*Reported resolution corresponds to spatial frequency of 0.244 Å<sup>-1</sup>

## 8 Fourier-Shell correlation [i](#)

Fourier-Shell Correlation (FSC) is the most commonly used method to estimate the resolution of single-particle and subtomogram-averaged maps. The shape of the curve depends on the imposed symmetry, mask and whether or not the two 3D reconstructions used were processed from a common reference. The reported resolution is shown as a black line. A curve is displayed for the half-bit criterion in addition to lines showing the 0.143 gold standard cut-off and 0.5 cut-off.

### 8.1 FSC [i](#)



\*Reported resolution corresponds to spatial frequency of 0.244 Å<sup>-1</sup>

## 8.2 Resolution estimates [i](#)

Resolution estimate (Å)	Estimation criterion (FSC cut-off)		
	0.143	0.5	Half-bit
Reported by author	4.10	-	-
Author-provided FSC curve	4.12	4.89	4.24
Unmasked-calculated*	7.92	10.58	8.27

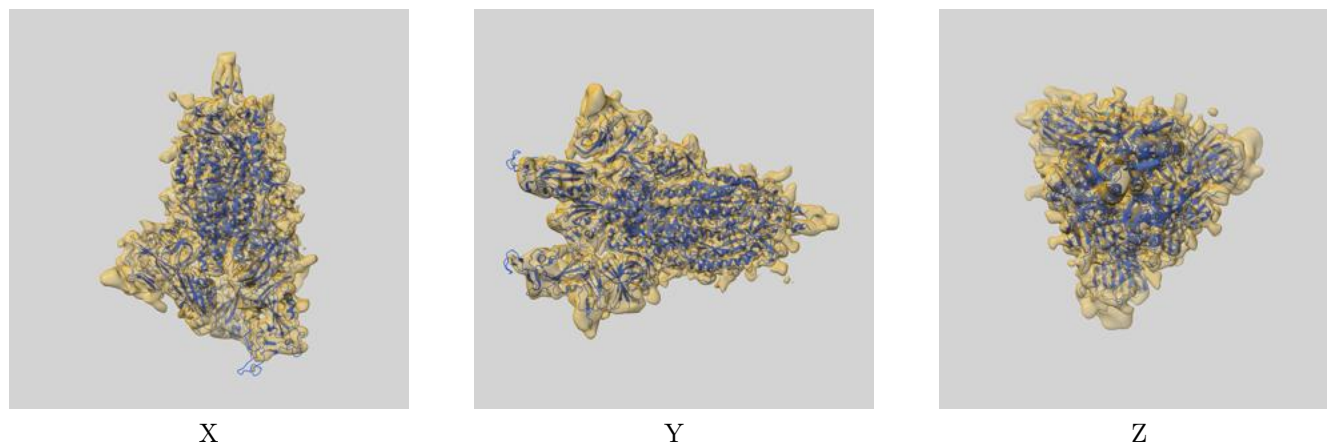
\*Resolution estimate based on FSC curve calculated by comparison of deposited half-maps. The value from deposited half-maps intersecting FSC 0.143 CUT-OFF 7.92 differs from the reported value 4.1 by more than 10 %



## 9 Map-model fit [i](#)

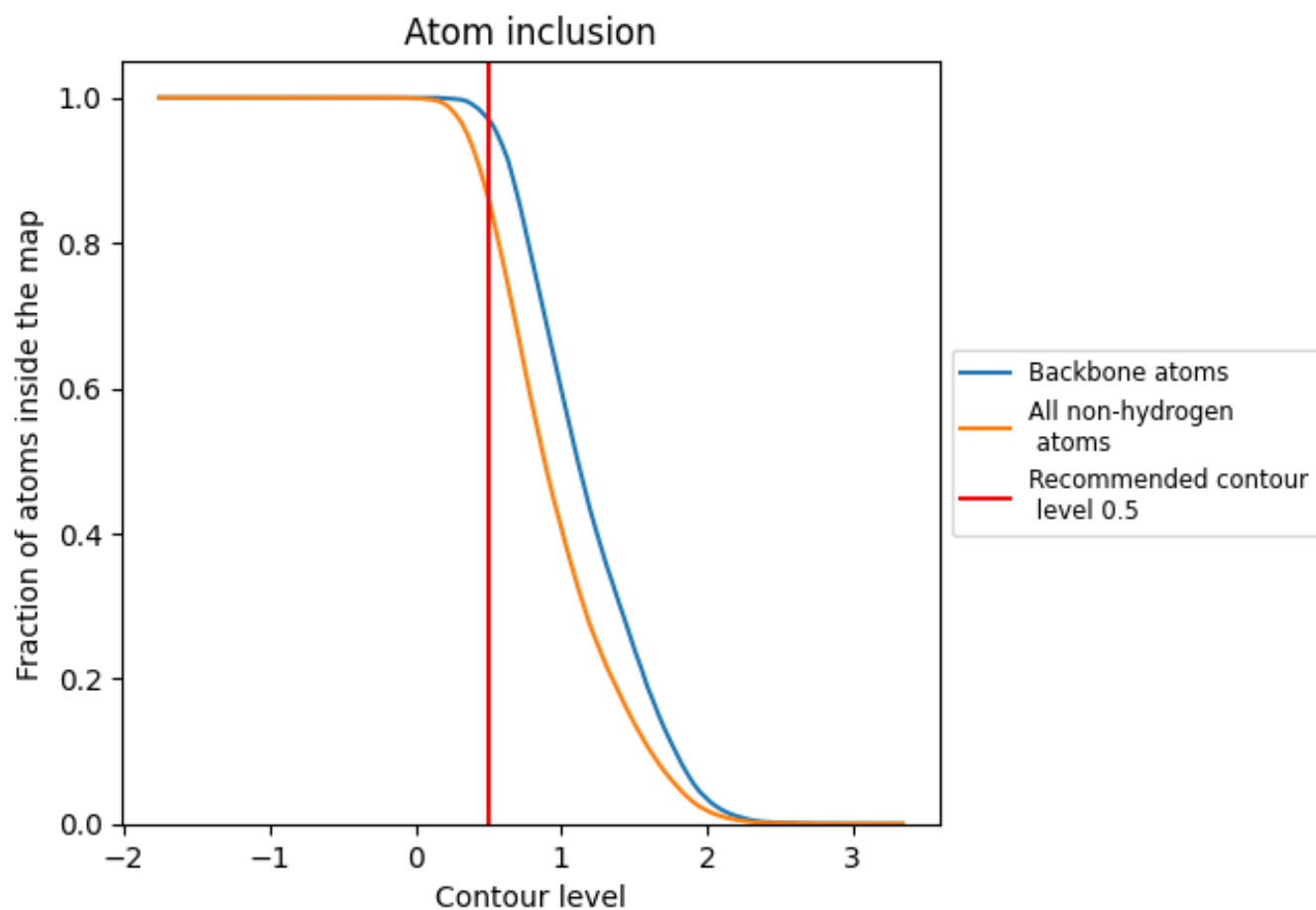
This section contains information regarding the fit between EMDB map EMD-14231 and PDB model 7R15. Per-residue inclusion information can be found in section 3 on page 13.

### 9.1 Map-model overlay [i](#)



The images above show the 3D surface view of the map at the recommended contour level 0.5 at 50% transparency in yellow overlaid with a ribbon representation of the model coloured in blue. These images allow for the visual assessment of the quality of fit between the atomic model and the map.

## 9.2 Atom inclusion [i](#)



At the recommended contour level, 97% of all backbone atoms, 86% of all non-hydrogen atoms, are inside the map.