



Full wwPDB X-ray Structure Validation Report ⓘ

Jan 13, 2024 – 12:25 pm GMT

PDB ID : 6R2A
Title : Crystal structure of the SucA domain of Mycobacterium smegmatis KGD
cocrystallized with succinylphosphonate phosphonoethyl ester (PESP)
Authors : Wagner, T.; Alzari, P.M.; Bellinzoni, M.
Deposited on : 2019-03-15
Resolution : 1.70 Å(reported)

This is a Full wwPDB X-ray Structure Validation Report for a publicly released PDB entry.

We welcome your comments at validation@mail.wwpdb.org

A user guide is available at

<https://www.wwpdb.org/validation/2017/XrayValidationReportHelp>

with specific help available everywhere you see the ⓘ symbol.

The types of validation reports are described at

<http://www.wwpdb.org/validation/2017/FAQs#types>.

The following versions of software and data (see [references ⓘ](#)) were used in the production of this report:

MolProbity : 4.02b-467
Mogul : 1.8.4, CSD as541be (2020)
Xtriage (Phenix) : 1.13
EDS : 2.36
buster-report : 1.1.7 (2018)
Percentile statistics : 20191225.v01 (using entries in the PDB archive December 25th 2019)
Refmac : 5.8.0158
CCP4 : 7.0.044 (Gargrove)
Ideal geometry (proteins) : Engh & Huber (2001)
Ideal geometry (DNA, RNA) : Parkinson et al. (1996)
Validation Pipeline (wwPDB-VP) : 2.36

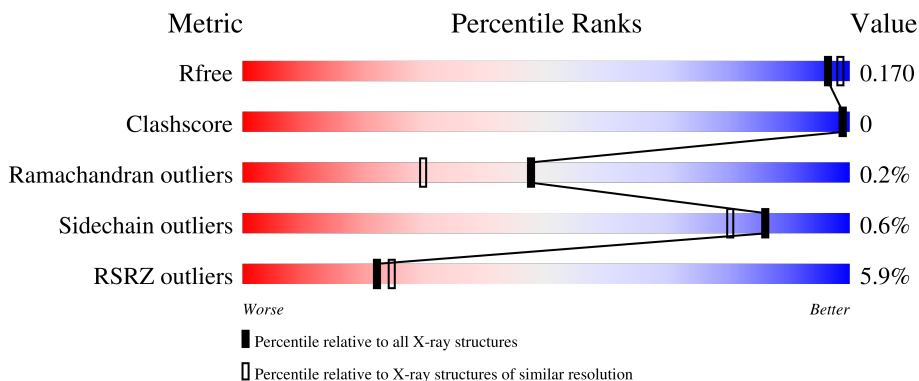
1 Overall quality at a glance

The following experimental techniques were used to determine the structure:

X-RAY DIFFRACTION

The reported resolution of this entry is 1.70 Å.

Percentile scores (ranging between 0-100) for global validation metrics of the entry are shown in the following graphic. The table shows the number of entries on which the scores are based.



Metric	Whole archive (#Entries)	Similar resolution (#Entries, resolution range(Å))
R_{free}	130704	4298 (1.70-1.70)
Clashscore	141614	4695 (1.70-1.70)
Ramachandran outliers	138981	4610 (1.70-1.70)
Sidechain outliers	138945	4610 (1.70-1.70)
RSRZ outliers	127900	4222 (1.70-1.70)

The table below summarises the geometric issues observed across the polymeric chains and their fit to the electron density. The red, orange, yellow and green segments of the lower bar indicate the fraction of residues that contain outliers for ≥ 3 , 2, 1 and 0 types of geometric quality criteria respectively. A grey segment represents the fraction of residues that are not modelled. The numeric value for each fraction is indicated below the corresponding segment, with a dot representing fractions $\leq 5\%$. The upper red bar (where present) indicates the fraction of residues that have poor fit to the electron density. The numeric value is given above the bar.

Mol	Chain	Length	Quality of chain
1	A	868	
1	B	868	

2 Entry composition i

There are 5 unique types of molecules in this entry. The entry contains 14827 atoms, of which 0 are hydrogens and 0 are deuteriums.

In the tables below, the ZeroOcc column contains the number of atoms modelled with zero occupancy, the AltConf column contains the number of residues with at least one atom in alternate conformation and the Trace column contains the number of residues modelled with at most 2 atoms.

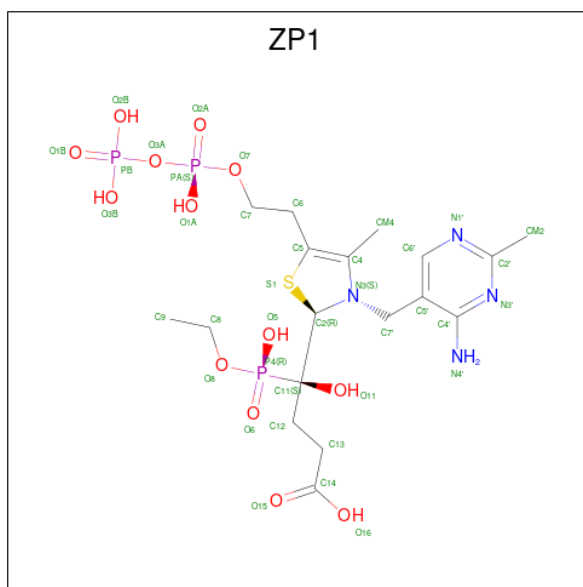
- Molecule 1 is a protein called Multifunctional 2-oxoglutarate metabolism enzyme.

Mol	Chain	Residues	Atoms					ZeroOcc	AltConf	Trace
			Total	C	N	O	S			
1	A	846	Total 6686	C 4216	N 1184	O 1262	S 24	0	15	0
1	B	855	Total 6742	C 4249	N 1191	O 1277	S 25	0	15	0

There are 2 discrepancies between the modelled and reference sequences:

Chain	Residue	Modelled	Actual	Comment	Reference
A	360	GLY	-	expression tag	UNP A0R2B1
B	360	GLY	-	expression tag	UNP A0R2B1

- Molecule 2 is (4 {S})-4-[(2 {R})-3-[(4-azanyl-2-methyl-pyrimidin-5-yl)methyl]-4-methyl-5-[2-[oxidanyl(phosphonoxy)phosphoryl]oxyethyl]-2 {H})-1,3-thiazol-2-yl]-4-[ethoxy(oxidanyl)phosphoryl]-4-oxidanyl-butanoic acid (three-letter code: ZP1) (formula: C₁₈H₃₁N₄O₁₃P₃S).

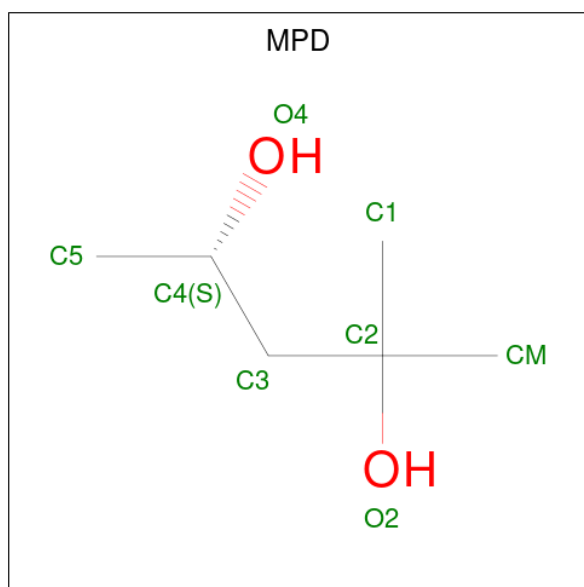


Mol	Chain	Residues	Atoms					ZeroOcc	AltConf	
			Total	C	N	O	P			S
2	A	1	39	18	4	13	3	1	0	0
2	B	1	39	18	4	13	3	1	0	0

- Molecule 3 is MAGNESIUM ION (three-letter code: MG) (formula: Mg).

Mol	Chain	Residues	Atoms	ZeroOcc	AltConf
3	A	2	Total Mg 2 2	0	0
3	B	2	Total Mg 2 2	0	0

- Molecule 4 is (4S)-2-METHYL-2,4-PENTANEDIOL (three-letter code: MPD) (formula: C₆H₁₄O₂).



Mol	Chain	Residues	Atoms	ZeroOcc	AltConf
4	A	1	Total C O 8 6 2	0	0
4	A	1	Total C O 8 6 2	0	0
4	A	1	Total C O 8 6 2	0	0
4	A	1	Total C O 8 6 2	0	0
4	B	1	Total C O 8 6 2	0	0

Continued on next page...

Continued from previous page...

Mol	Chain	Residues	Atoms			ZeroOcc	AltConf
4	B	1	Total	C	O	0	0
			8	6	2		

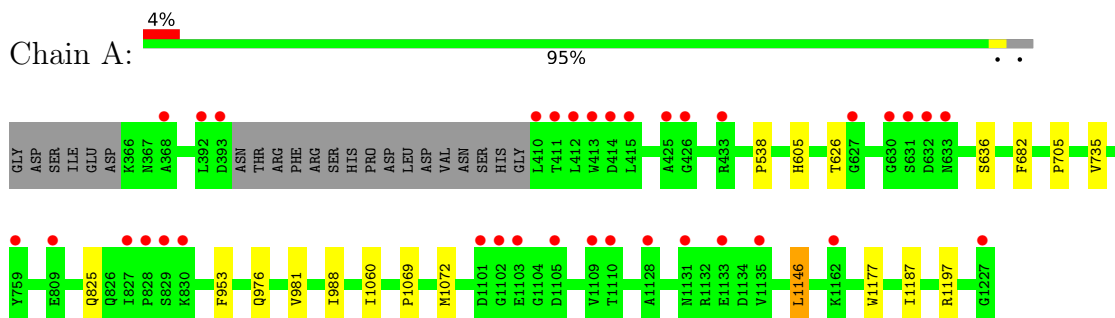
- Molecule 5 is water.

Mol	Chain	Residues	Atoms		ZeroOcc	AltConf
5	A	662	Total	O	0	0
			662	662		
5	B	607	Total	O	0	0
			607	607		

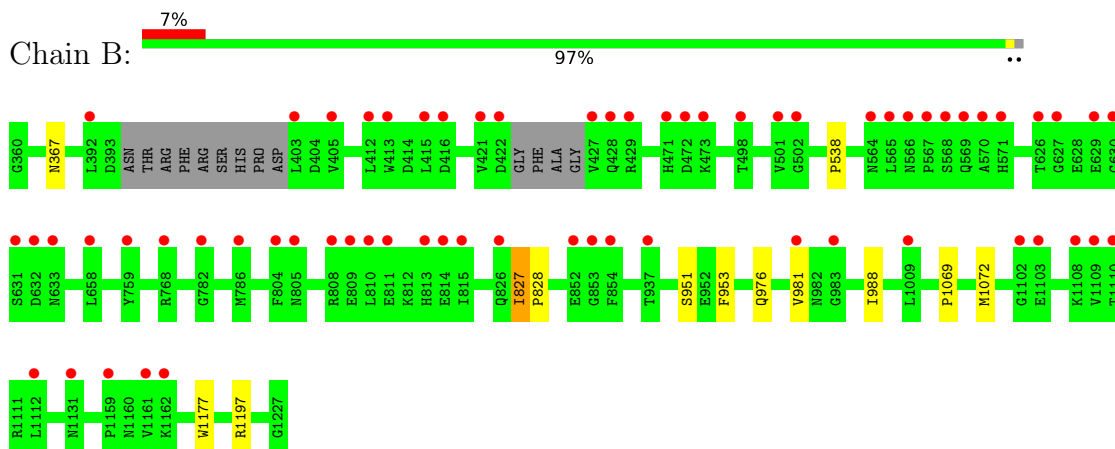
3 Residue-property plots [i](#)

These plots are drawn for all protein, RNA, DNA and oligosaccharide chains in the entry. The first graphic for a chain summarises the proportions of the various outlier classes displayed in the second graphic. The second graphic shows the sequence view annotated by issues in geometry and electron density. Residues are color-coded according to the number of geometric quality criteria for which they contain at least one outlier: green = 0, yellow = 1, orange = 2 and red = 3 or more. A red dot above a residue indicates a poor fit to the electron density ($RSRZ > 2$). Stretches of 2 or more consecutive residues without any outlier are shown as a green connector. Residues present in the sample, but not in the model, are shown in grey.

- Molecule 1: Multifunctional 2-oxoglutarate metabolism enzyme



- Molecule 1: Multifunctional 2-oxoglutarate metabolism enzyme



4 Data and refinement statistics

Property	Value	Source
Space group	P 1 21 1	Depositor
Cell constants a, b, c, α , β , γ	86.48Å 108.02Å 120.53Å 90.00° 103.55° 90.00°	Depositor
Resolution (Å)	40.37 – 1.70 40.37 – 1.70	Depositor EDS
% Data completeness (in resolution range)	98.5 (40.37-1.70) 98.5 (40.37-1.70)	Depositor EDS
R_{merge}	0.07	Depositor
R_{sym}	(Not available)	Depositor
$\langle I/\sigma(I) \rangle$ ¹	2.00 (at 1.70Å)	Xtrriage
Refinement program	BUSTER 2.10.3	Depositor
R, R_{free}	0.151 , 0.168 0.154 , 0.170	Depositor DCC
R_{free} test set	11651 reflections (5.01%)	wwPDB-VP
Wilson B-factor (Å ²)	22.6	Xtrriage
Anisotropy	0.132	Xtrriage
Bulk solvent k_{sol} (e/Å ³), B_{sol} (Å ²)	0.38 , 56.6	EDS
L-test for twinning ²	$\langle L \rangle = 0.49$, $\langle L^2 \rangle = 0.32$	Xtrriage
Estimated twinning fraction	No twinning to report.	Xtrriage
F_o, F_c correlation	0.97	EDS
Total number of atoms	14827	wwPDB-VP
Average B, all atoms (Å ²)	31.0	wwPDB-VP

Xtrriage's analysis on translational NCS is as follows: *The largest off-origin peak in the Patterson function is 4.33% of the height of the origin peak. No significant pseudotranslation is detected.*

¹Intensities estimated from amplitudes.

²Theoretical values of $\langle |L| \rangle$, $\langle L^2 \rangle$ for acentric reflections are 0.5, 0.333 respectively for untwinned datasets, and 0.375, 0.2 for perfectly twinned datasets.

5 Model quality

5.1 Standard geometry

Bond lengths and bond angles in the following residue types are not validated in this section: ZP1, MG, MPD

The Z score for a bond length (or angle) is the number of standard deviations the observed value is removed from the expected value. A bond length (or angle) with $|Z| > 5$ is considered an outlier worth inspection. RMSZ is the root-mean-square of all Z scores of the bond lengths (or angles).

Mol	Chain	Bond lengths		Bond angles	
		RMSZ	# Z >5	RMSZ	# Z >5
1	A	0.49	0/6866	0.56	0/9295
1	B	0.48	0/6923	0.55	0/9377
All	All	0.49	0/13789	0.56	0/18672

There are no bond length outliers.

There are no bond angle outliers.

There are no chirality outliers.

There are no planarity outliers.

5.2 Too-close contacts

In the following table, the Non-H and H(model) columns list the number of non-hydrogen atoms and hydrogen atoms in the chain respectively. The H(added) column lists the number of hydrogen atoms added and optimized by MolProbity. The Clashes column lists the number of clashes within the asymmetric unit, whereas Symm-Clashes lists symmetry-related clashes.

Mol	Chain	Non-H	H(model)	H(added)	Clashes	Symm-Clashes
1	A	6686	0	6608	7	0
1	B	6742	0	6651	4	0
2	A	39	0	0	0	0
2	B	39	0	0	0	0
3	A	2	0	0	0	0
3	B	2	0	0	0	0
4	A	32	0	56	0	0
4	B	16	0	28	0	0
5	A	662	0	0	0	0
5	B	607	0	0	0	0
All	All	14827	0	13343	11	0

The all-atom clashscore is defined as the number of clashes found per 1000 atoms (including hydrogen atoms). The all-atom clashscore for this structure is 0.

All (11) close contacts within the same asymmetric unit are listed below, sorted by their clash magnitude.

Atom-1	Atom-2	Interatomic distance (Å)	Clash overlap (Å)
1:A:1146:LEU:HD22	1:A:1187:ILE:HD11	1.92	0.51
1:A:626:THR:HG21	1:A:636:SER:OG	2.10	0.50
1:B:981:VAL:HG22	1:B:988:ILE:HD11	1.99	0.45
1:A:981:VAL:HG22	1:A:988:ILE:HD11	1.98	0.44
1:A:1177:TRP:CD1	1:A:1197:ARG:HD3	2.54	0.43
1:A:825:GLN:HB3	1:A:1060:ILE:HD12	2.00	0.43
1:B:1177:TRP:CD1	1:B:1197:ARG:HD3	2.53	0.43
1:A:1069:PRO:HB2	1:A:1072:MET:HB3	2.03	0.41
1:B:1069:PRO:HB2	1:B:1072:MET:HB3	2.02	0.41
1:B:827:ILE:HG13	1:B:828:PRO:HD2	2.02	0.41
1:A:705:PRO:HG2	1:A:735[A]:VAL:HG13	2.03	0.41

There are no symmetry-related clashes.

5.3 Torsion angles [i](#)

5.3.1 Protein backbone [i](#)

In the following table, the Percentiles column shows the percent Ramachandran outliers of the chain as a percentile score with respect to all X-ray entries followed by that with respect to entries of similar resolution.

The Analysed column shows the number of residues for which the backbone conformation was analysed, and the total number of residues.

Mol	Chain	Analysed	Favoured	Allowed	Outliers	Percentiles
1	A	857/868 (99%)	839 (98%)	16 (2%)	2 (0%)	47 30
1	B	864/868 (100%)	844 (98%)	19 (2%)	1 (0%)	51 33
All	All	1721/1736 (99%)	1683 (98%)	35 (2%)	3 (0%)	47 30

All (3) Ramachandran outliers are listed below:

Mol	Chain	Res	Type
1	A	538	PRO
1	A	605	HIS
1	B	538	PRO

5.3.2 Protein sidechains [i](#)

In the following table, the Percentiles column shows the percent sidechain outliers of the chain as a percentile score with respect to all X-ray entries followed by that with respect to entries of similar resolution.

The Analysed column shows the number of residues for which the sidechain conformation was analysed, and the total number of residues.

Mol	Chain	Analysed	Rotameric	Outliers	Percentiles	
1	A	708/726 (98%)	704 (99%)	4 (1%)	86	80
1	B	717/726 (99%)	711 (99%)	6 (1%)	81	74
All	All	1425/1452 (98%)	1415 (99%)	10 (1%)	86	77

All (10) residues with a non-rotameric sidechain are listed below:

Mol	Chain	Res	Type
1	A	682	PHE
1	A	953	PHE
1	A	976	GLN
1	A	1146	LEU
1	B	367	ASN
1	B	827	ILE
1	B	951[A]	SER
1	B	951[B]	SER
1	B	953	PHE
1	B	976	GLN

Sometimes sidechains can be flipped to improve hydrogen bonding and reduce clashes. There are no such sidechains identified.

5.3.3 RNA [i](#)

There are no RNA molecules in this entry.

5.4 Non-standard residues in protein, DNA, RNA chains [i](#)

There are no non-standard protein/DNA/RNA residues in this entry.

5.5 Carbohydrates [i](#)

There are no monosaccharides in this entry.

5.6 Ligand geometry

Of 12 ligands modelled in this entry, 4 are monoatomic - leaving 8 for Mogul analysis.

In the following table, the Counts columns list the number of bonds (or angles) for which Mogul statistics could be retrieved, the number of bonds (or angles) that are observed in the model and the number of bonds (or angles) that are defined in the Chemical Component Dictionary. The Link column lists molecule types, if any, to which the group is linked. The Z score for a bond length (or angle) is the number of standard deviations the observed value is removed from the expected value. A bond length (or angle) with $|Z| > 2$ is considered an outlier worth inspection. RMSZ is the root-mean-square of all Z scores of the bond lengths (or angles).

Mol	Type	Chain	Res	Link	Bond lengths			Bond angles		
					Counts	RMSZ	# Z > 2	Counts	RMSZ	# Z > 2
4	MPD	A	2005	-	7,7,7	0.59	0	9,10,10	0.51	0
2	ZP1	A	2001	3	34,40,40	1.88	7 (20%)	45,61,61	1.44	9 (20%)
4	MPD	A	2007	-	7,7,7	0.98	1 (14%)	9,10,10	0.56	0
2	ZP1	B	2001	3	34,40,40	2.18	9 (26%)	45,61,61	1.53	11 (24%)
4	MPD	A	2004	-	7,7,7	0.39	0	9,10,10	0.59	0
4	MPD	B	2005	-	7,7,7	0.53	0	9,10,10	0.40	0
4	MPD	A	2006	-	7,7,7	0.66	0	9,10,10	0.47	0
4	MPD	B	2004	-	7,7,7	0.50	0	9,10,10	0.47	0

In the following table, the Chirals column lists the number of chiral outliers, the number of chiral centers analysed, the number of these observed in the model and the number defined in the Chemical Component Dictionary. Similar counts are reported in the Torsion and Rings columns. '-' means no outliers of that kind were identified.

Mol	Type	Chain	Res	Link	Chirals	Torsions	Rings
4	MPD	A	2005	-	-	0/5/5/5	-
2	ZP1	A	2001	3	-	6/33/58/58	0/2/2/2
4	MPD	A	2007	-	-	2/5/5/5	-
2	ZP1	B	2001	3	-	6/33/58/58	0/2/2/2
4	MPD	A	2004	-	-	3/5/5/5	-
4	MPD	B	2005	-	-	3/5/5/5	-
4	MPD	A	2006	-	-	2/5/5/5	-
4	MPD	B	2004	-	-	2/5/5/5	-

All (17) bond length outliers are listed below:

Mol	Chain	Res	Type	Atoms	Z	Observed(Å)	Ideal(Å)
2	B	2001	ZP1	P4-O8	8.42	1.69	1.57
2	A	2001	ZP1	P4-O8	7.02	1.67	1.57

Continued on next page...

Continued from previous page...

Mol	Chain	Res	Type	Atoms	Z	Observed(Å)	Ideal(Å)
2	A	2001	ZP1	C4-N3	4.20	1.47	1.36
2	B	2001	ZP1	C4'-N3'	3.61	1.40	1.35
2	B	2001	ZP1	C4-N3	3.56	1.46	1.36
2	B	2001	ZP1	P4-O5	-3.17	1.50	1.56
2	A	2001	ZP1	C4'-N3'	2.94	1.39	1.35
2	A	2001	ZP1	P4-O5	-2.86	1.50	1.56
2	B	2001	ZP1	C6-C7	2.52	1.58	1.51
2	B	2001	ZP1	PA-O7	2.42	1.69	1.59
4	A	2007	MPD	C3-C2	2.29	1.59	1.53
2	A	2001	ZP1	PA-O7	2.27	1.68	1.59
2	B	2001	ZP1	C7'-N3	2.24	1.50	1.46
2	B	2001	ZP1	C2'-N3'	2.18	1.37	1.34
2	B	2001	ZP1	C13-C14	2.12	1.55	1.50
2	A	2001	ZP1	C13-C14	2.12	1.55	1.50
2	A	2001	ZP1	C6-C7	2.03	1.56	1.51

All (20) bond angle outliers are listed below:

Mol	Chain	Res	Type	Atoms	Z	Observed(°)	Ideal(°)
2	B	2001	ZP1	P4-C11-C12	-3.22	102.75	110.70
2	B	2001	ZP1	CM4-C4-N3	3.05	122.80	119.89
2	A	2001	ZP1	P4-C11-C12	-3.05	103.19	110.70
2	B	2001	ZP1	O5-P4-O6	2.68	117.80	111.34
2	A	2001	ZP1	P4-O8-C8	-2.60	113.93	122.69
2	B	2001	ZP1	C7'-N3-C2	2.54	122.27	119.47
2	A	2001	ZP1	C13-C12-C11	2.48	120.30	114.33
2	B	2001	ZP1	S1-C2-N3	-2.41	104.93	106.91
2	B	2001	ZP1	P4-O8-C8	-2.40	114.62	122.69
2	A	2001	ZP1	O16-C14-C13	2.40	121.73	114.03
2	B	2001	ZP1	C13-C12-C11	2.38	120.06	114.33
2	A	2001	ZP1	O15-C14-C13	-2.38	115.44	123.08
2	B	2001	ZP1	O16-C14-C13	2.37	121.66	114.03
2	B	2001	ZP1	O8-P4-O6	-2.36	111.30	115.48
2	A	2001	ZP1	C7'-N3-C2	2.30	122.01	119.47
2	B	2001	ZP1	O15-C14-C13	-2.15	116.17	123.08
2	A	2001	ZP1	C2'-N3'-C4'	-2.15	114.73	118.08
2	A	2001	ZP1	CM4-C4-N3	2.11	121.91	119.89
2	B	2001	ZP1	C2'-N3'-C4'	-2.10	114.81	118.08
2	A	2001	ZP1	C5'-C7'-N3	2.04	116.26	113.34

There are no chirality outliers.

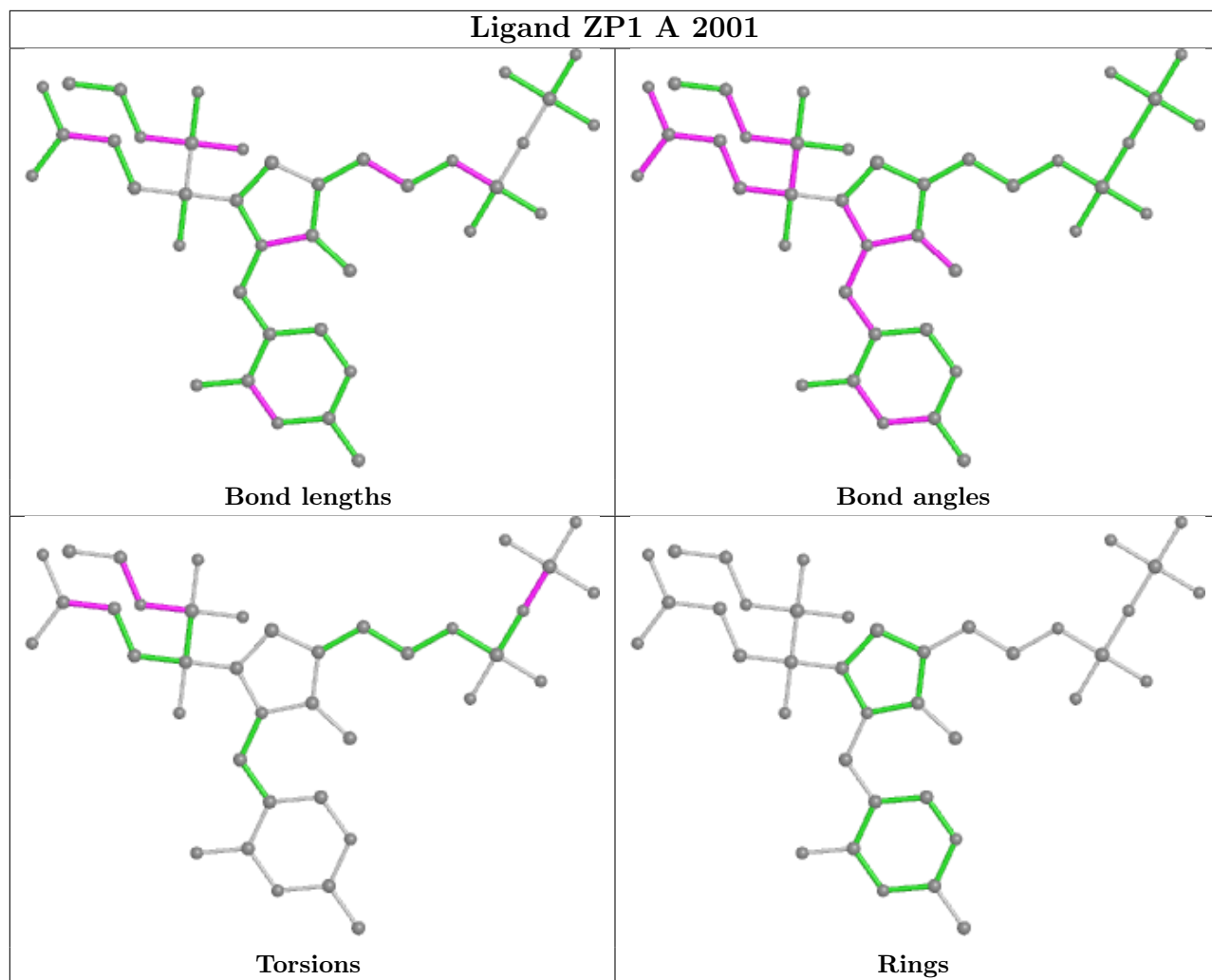
All (24) torsion outliers are listed below:

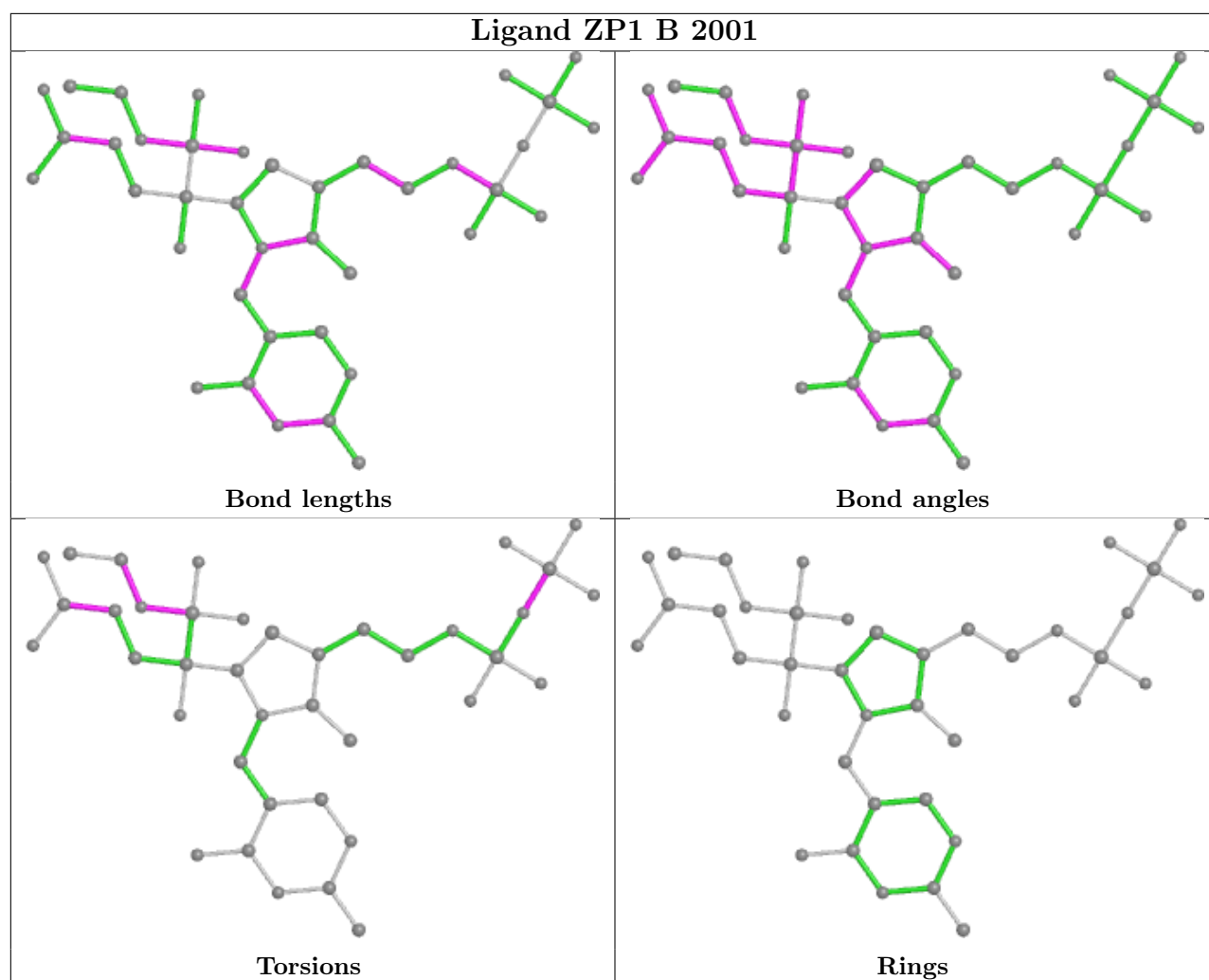
Mol	Chain	Res	Type	Atoms
2	A	2001	ZP1	C8-O8-P4-O5
2	B	2001	ZP1	C8-O8-P4-O5
2	A	2001	ZP1	PA-O3A-PB-O1B
2	B	2001	ZP1	PA-O3A-PB-O1B
2	A	2001	ZP1	PA-O3A-PB-O2B
2	B	2001	ZP1	PA-O3A-PB-O2B
4	B	2005	MPD	C2-C3-C4-C5
2	B	2001	ZP1	C9-C8-O8-P4
2	A	2001	ZP1	C9-C8-O8-P4
4	A	2004	MPD	CM-C2-C3-C4
4	A	2006	MPD	CM-C2-C3-C4
4	B	2004	MPD	CM-C2-C3-C4
4	A	2004	MPD	O2-C2-C3-C4
4	A	2006	MPD	O2-C2-C3-C4
4	B	2005	MPD	O2-C2-C3-C4
4	A	2007	MPD	C2-C3-C4-C5
2	A	2001	ZP1	C12-C13-C14-O16
2	B	2001	ZP1	C12-C13-C14-O16
4	A	2004	MPD	C2-C3-C4-O4
4	A	2007	MPD	C2-C3-C4-O4
4	B	2004	MPD	C2-C3-C4-O4
4	B	2005	MPD	C2-C3-C4-O4
2	A	2001	ZP1	C12-C13-C14-O15
2	B	2001	ZP1	C12-C13-C14-O15

There are no ring outliers.

No monomer is involved in short contacts.

The following is a two-dimensional graphical depiction of Mogul quality analysis of bond lengths, bond angles, torsion angles, and ring geometry for all instances of the Ligand of Interest. In addition, ligands with molecular weight > 250 and outliers as shown on the validation Tables will also be included. For torsion angles, if less than 5% of the Mogul distribution of torsion angles is within 10 degrees of the torsion angle in question, then that torsion angle is considered an outlier. Any bond that is central to one or more torsion angles identified as an outlier by Mogul will be highlighted in the graph. For rings, the root-mean-square deviation (RMSD) between the ring in question and similar rings identified by Mogul is calculated over all ring torsion angles. If the average RMSD is greater than 60 degrees and the minimal RMSD between the ring in question and any Mogul-identified rings is also greater than 60 degrees, then that ring is considered an outlier. The outliers are highlighted in purple. The color gray indicates Mogul did not find sufficient equivalents in the CSD to analyse the geometry.





5.7 Other polymers [\(i\)](#)

There are no such residues in this entry.

5.8 Polymer linkage issues [\(i\)](#)

There are no chain breaks in this entry.

6 Fit of model and data

6.1 Protein, DNA and RNA chains

In the following table, the column labelled ‘#RSRZ > 2’ contains the number (and percentage) of RSRZ outliers, followed by percent RSRZ outliers for the chain as percentile scores relative to all X-ray entries and entries of similar resolution. The OWAB column contains the minimum, median, 95th percentile and maximum values of the occupancy-weighted average B-factor per residue. The column labelled ‘Q < 0.9’ lists the number of (and percentage) of residues with an average occupancy less than 0.9.

Mol	Chain	Analysed	<RSRZ>	#RSRZ>2	OWAB(Å ²)	Q<0.9
1	A	846/868 (97%)	0.00	35 (4%) 37 41	14, 25, 54, 82	0
1	B	855/868 (98%)	0.17	65 (7%) 13 16	15, 29, 59, 87	0
All	All	1701/1736 (97%)	0.09	100 (5%) 22 24	14, 27, 57, 87	0

All (100) RSRZ outliers are listed below:

Mol	Chain	Res	Type	RSRZ
1	A	413	TRP	9.6
1	A	828	PRO	7.6
1	A	410	LEU	7.4
1	B	631	SER	6.6
1	B	813	HIS	6.5
1	B	565	LEU	6.4
1	B	427	VAL	6.0
1	B	413	TRP	5.8
1	B	810	LEU	5.8
1	B	412	LEU	5.4
1	B	567	PRO	5.4
1	B	568	SER	5.3
1	A	412	LEU	5.2
1	B	815	ILE	4.9
1	B	472	ASP	4.9
1	A	633	ASN	4.8
1	B	570	ALA	4.8
1	B	633	ASN	4.6
1	B	1103	GLU	4.2
1	A	829	SER	4.1
1	A	392	LEU	4.1
1	B	564	ASN	4.1
1	B	428	GLN	3.9
1	B	809	GLU	3.8

Continued on next page...

Continued from previous page...

Mol	Chain	Res	Type	RSRZ
1	B	1102	GLY	3.7
1	A	415	LEU	3.7
1	B	403	LEU	3.7
1	B	804	PHE	3.6
1	B	566	ASN	3.6
1	A	827	ILE	3.6
1	B	421	VAL	3.6
1	A	1101	ASP	3.5
1	B	569	GLN	3.5
1	A	411	THR	3.5
1	A	830	LYS	3.5
1	B	808	ARG	3.4
1	B	630	GLY	3.4
1	B	392	LEU	3.3
1	A	630	GLY	3.3
1	B	415	LEU	3.2
1	B	853	GLY	3.2
1	A	425	ALA	3.1
1	B	501	VAL	3.1
1	B	626	THR	3.0
1	B	768	ARG	3.0
1	A	393	ASP	3.0
1	A	1131	ASN	3.0
1	B	811	GLU	3.0
1	B	416	ASP	2.9
1	B	571	HIS	2.9
1	B	429	ARG	2.9
1	B	1110	THR	2.9
1	B	786	MET	2.9
1	A	1135	VAL	2.8
1	A	1110	THR	2.8
1	A	433	ARG	2.8
1	A	1103	GLU	2.8
1	A	632	ASP	2.7
1	A	368	ALA	2.7
1	B	422	ASP	2.7
1	B	852	GLU	2.6
1	A	631	SER	2.6
1	A	1102	GLY	2.6
1	B	1159	PRO	2.6
1	A	627	GLY	2.5
1	A	1227	GLY	2.5

Continued on next page...

Continued from previous page...

Mol	Chain	Res	Type	RSRZ
1	A	1162	LYS	2.5
1	B	782	GLY	2.5
1	B	805	ASN	2.5
1	B	405	VAL	2.5
1	A	1128	ALA	2.4
1	B	1131	ASN	2.4
1	B	1109	VAL	2.4
1	B	632	ASP	2.4
1	A	1133	GLU	2.3
1	A	414	ASP	2.3
1	B	473	LYS	2.3
1	B	826	GLN	2.3
1	B	1162	LYS	2.3
1	B	498	THR	2.3
1	B	981	VAL	2.3
1	B	1161	VAL	2.3
1	A	1105	ASP	2.3
1	B	471	HIS	2.2
1	A	809	GLU	2.2
1	B	814	GLU	2.2
1	B	983	GLY	2.2
1	B	1112	LEU	2.2
1	A	759	TYR	2.1
1	B	627	GLY	2.1
1	B	1009	LEU	2.1
1	B	629	GLU	2.1
1	B	1108	LYS	2.1
1	A	1109	VAL	2.1
1	A	426	GLY	2.1
1	B	502	GLY	2.1
1	B	759	TYR	2.0
1	B	658	LEU	2.0
1	B	854	PHE	2.0
1	B	937	THR	2.0

6.2 Non-standard residues in protein, DNA, RNA chains [i](#)

There are no non-standard protein/DNA/RNA residues in this entry.

6.3 Carbohydrates [i](#)

There are no monosaccharides in this entry.

6.4 Ligands [i](#)

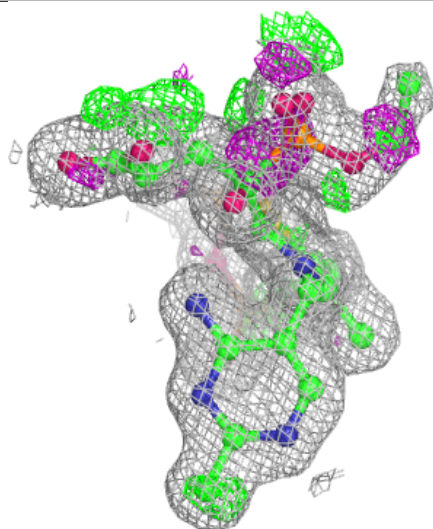
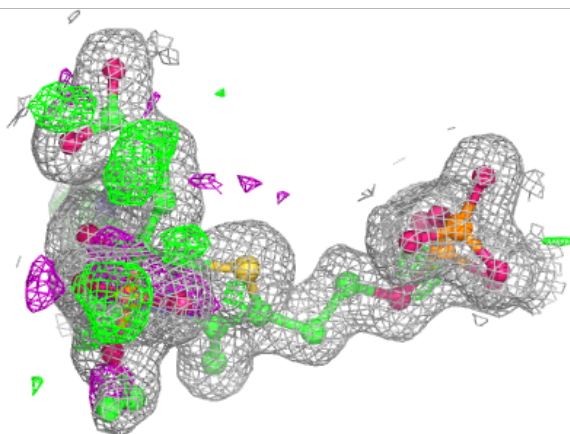
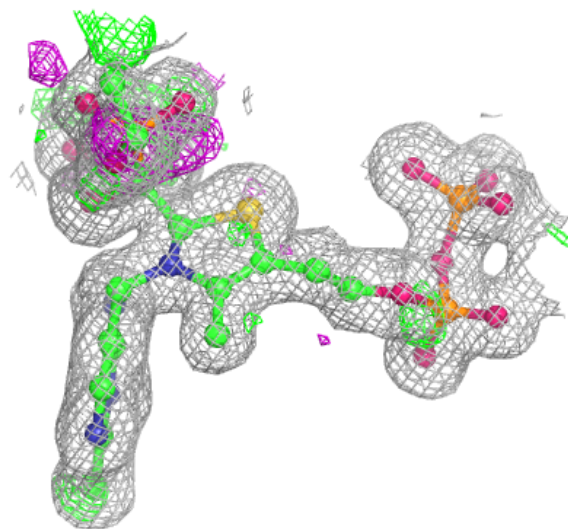
In the following table, the Atoms column lists the number of modelled atoms in the group and the number defined in the chemical component dictionary. The B-factors column lists the minimum, median, 95th percentile and maximum values of B factors of atoms in the group. The column labelled 'Q< 0.9' lists the number of atoms with occupancy less than 0.9.

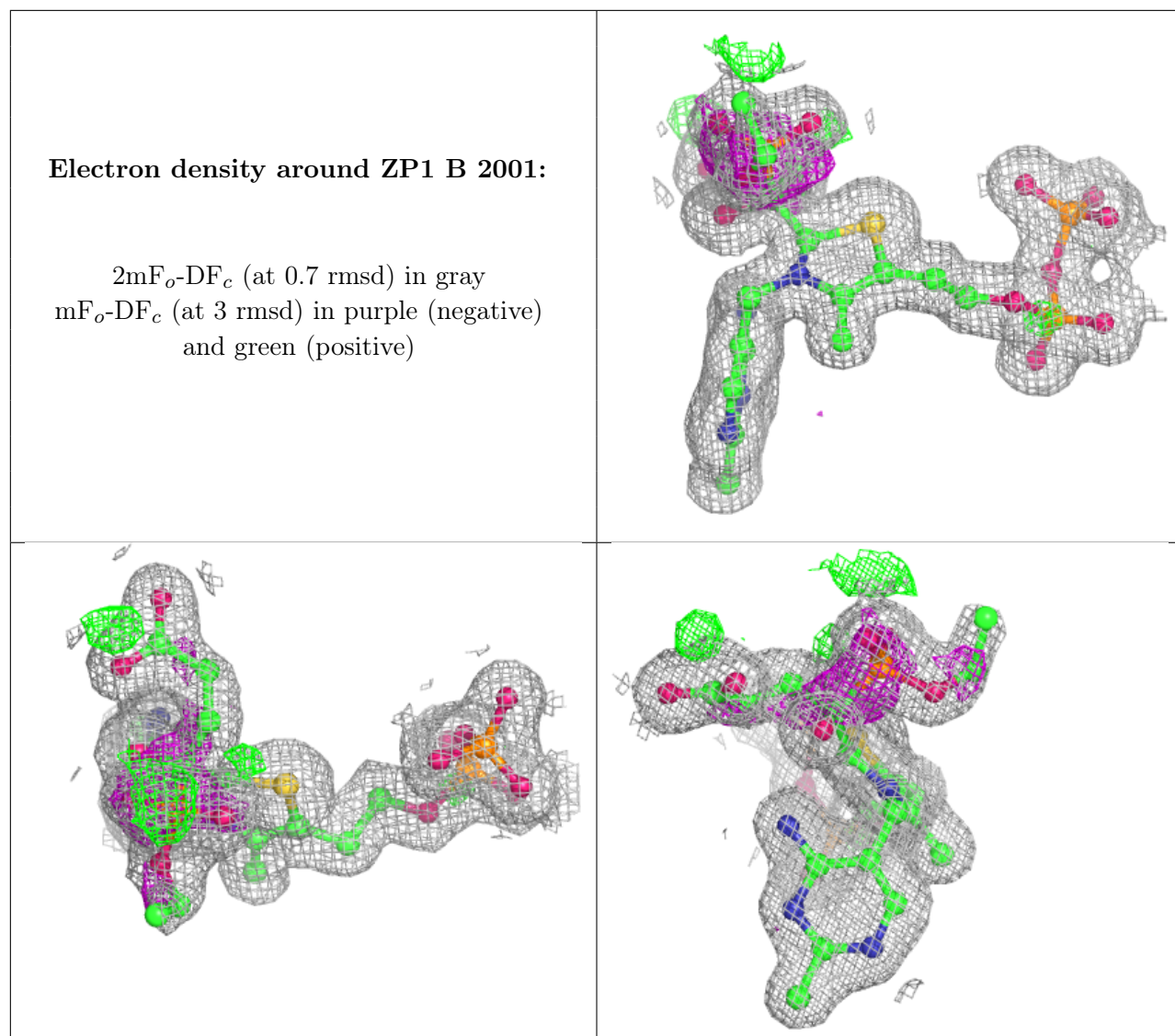
Mol	Type	Chain	Res	Atoms	RSCC	RSR	B-factors(\AA^2)	Q<0.9
4	MPD	A	2007	8/8	0.81	0.18	47,49,52,52	0
4	MPD	A	2005	8/8	0.84	0.19	39,42,44,46	0
4	MPD	B	2005	8/8	0.85	0.24	83,83,84,84	0
4	MPD	A	2006	8/8	0.90	0.20	40,43,44,47	0
4	MPD	B	2004	8/8	0.91	0.15	36,45,48,52	0
4	MPD	A	2004	8/8	0.93	0.13	29,34,35,35	0
3	MG	A	2003	1/1	0.98	0.05	22,22,22,22	0
3	MG	B	2003	1/1	0.98	0.04	29,29,29,29	0
2	ZP1	A	2001	39/39	0.98	0.12	13,16,29,33	0
2	ZP1	B	2001	39/39	0.98	0.09	16,19,33,37	0
3	MG	A	2002	1/1	0.99	0.10	16,16,16,16	0
3	MG	B	2002	1/1	1.00	0.06	18,18,18,18	0

The following is a graphical depiction of the model fit to experimental electron density of all instances of the Ligand of Interest. In addition, ligands with molecular weight > 250 and outliers as shown on the geometry validation Tables will also be included. Each fit is shown from different orientation to approximate a three-dimensional view.

Electron density around ZP1 A 2001:

$2mF_o-DF_c$ (at 0.7 rmsd) in gray
 mF_o-DF_c (at 3 rmsd) in purple (negative)
and green (positive)





6.5 Other polymers [i](#)

There are no such residues in this entry.