



wwPDB EM Validation Summary Report ⓘ

May 25, 2024 – 11:53 AM EDT

PDB ID : 7R72
EMDB ID : EMD-24290
Title : State E1 nucleolar 60S ribosome biogenesis intermediate - Spb4 local model
Authors : Cruz, V.E.; Sekulski, K.; Peddada, N.; Erzberger, J.P.
Deposited on : 2021-06-24
Resolution : 3.07 Å(reported)

This is a wwPDB EM Validation Summary Report for a publicly released PDB entry.

We welcome your comments at validation@mail.wwpdb.org

A user guide is available at

<https://www.wwpdb.org/validation/2017/EMValidationReportHelp>

with specific help available everywhere you see the ⓘ symbol.

The types of validation reports are described at

<http://www.wwpdb.org/validation/2017/FAQs#types>.

The following versions of software and data (see [references ⓘ](#)) were used in the production of this report:

EMDB validation analysis : 0.0.1.dev92
MolProbity : 4.02b-467
Percentile statistics : 20191225.v01 (using entries in the PDB archive December 25th 2019)
MapQ : 1.9.13
Ideal geometry (proteins) : Engh & Huber (2001)
Ideal geometry (DNA, RNA) : Parkinson et al. (1996)
Validation Pipeline (wwPDB-VP) : 2.36.2

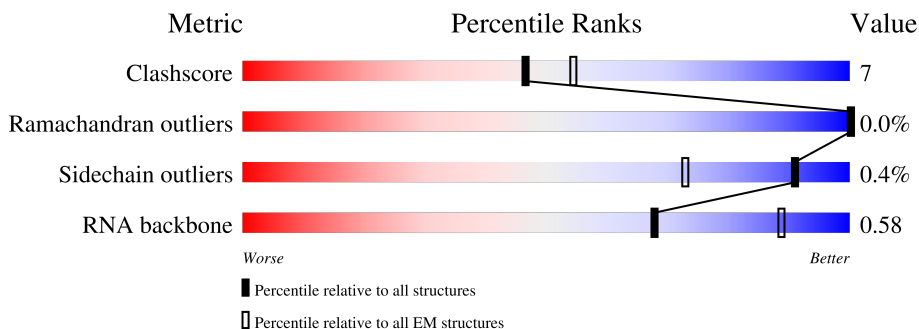
1 Overall quality at a glance i

The following experimental techniques were used to determine the structure:

ELECTRON MICROSCOPY

The reported resolution of this entry is 3.07 Å.

Percentile scores (ranging between 0-100) for global validation metrics of the entry are shown in the following graphic. The table shows the number of entries on which the scores are based.



Metric	Whole archive (#Entries)	EM structures (#Entries)
Clashscore	158937	4297
Ramachandran outliers	154571	4023
Sidechain outliers	154315	3826
RNA backbone	4643	859

The table below summarises the geometric issues observed across the polymeric chains and their fit to the map. The red, orange, yellow and green segments of the bar indicate the fraction of residues that contain outliers for ≥ 3 , 2, 1 and 0 types of geometric quality criteria respectively. A grey segment represents the fraction of residues that are not modelled. The numeric value for each fraction is indicated below the corresponding segment, with a dot representing fractions $\leq 5\%$. The upper red bar (where present) indicates the fraction of residues that have poor fit to the EM map (all-atom inclusion $< 40\%$). The numeric value is given above the bar.

Mol	Chain	Length	Quality of chain
1	1	641	8% (red), 66% (green), 29% (yellow), . (orange)
2	2	72	. (red), 58% (green), 21% (yellow), . (orange), 18% (grey)
3	8	710	7% (green), . (orange), 92% (grey)
4	B	387	. (red), 98% (grey)
5	G	256	7% (green), . (orange), 93% (grey)
6	I	663	. (red), 44% (green), 6% (yellow), 50% (grey)
7	P	184	. (red), 22% (green), 5% (yellow), 72% (grey)

Continued on next page...

Continued from previous page...

Mol	Chain	Length	Quality of chain
8	R	189	
9	U	121	
10	X	142	
11	Z	136	
12	b	647	
13	c	105	
14	d	113	
15	g	121	
16	j	88	
17	k	78	
18	m	429	
19	n	104	
20	p	460	
21	t	322	
22	u	199	
23	w	841	
24	x	606	

2 Entry composition

There are 25 unique types of molecules in this entry. The entry contains 39443 atoms, of which 0 are hydrogens and 0 are deuteriums.

In the tables below, the AltConf column contains the number of residues with at least one atom in alternate conformation and the Trace column contains the number of residues modelled with at most 2 atoms.

- Molecule 1 is a RNA chain called 25S rRNA.

Mol	Chain	Residues	Atoms					AltConf	Trace
			Total	C	N	O	P		
1	1	641	13716	6122	2470	4483	641	0	0

- Molecule 2 is a RNA chain called 5.8S rRNA.

Mol	Chain	Residues	Atoms					AltConf	Trace
			Total	C	N	O	P		
2	2	59	1255	560	222	414	59	0	0

- Molecule 3 is a protein called Nucleolar complex protein 2.

Mol	Chain	Residues	Atoms				AltConf	Trace
			Total	C	N	O		
3	8	58	480	290	103	87	0	0

- Molecule 4 is a protein called 60S ribosomal protein L3.

Mol	Chain	Residues	Atoms					AltConf	Trace
			Total	C	N	O	S		
4	B	9	72	48	11	12	1	0	0

- Molecule 5 is a protein called 60S ribosomal protein L8-A.

Mol	Chain	Residues	Atoms				AltConf	Trace
			Total	C	N	O		
5	G	19	175	115	34	26	0	0

- Molecule 6 is a protein called Nucleolar complex-associated protein 3.

Mol	Chain	Residues	Atoms					AltConf	Trace
			Total	C	N	O	S		
6	I	334	2675	1691	467	507	10	0	0

- Molecule 7 is a protein called 60S ribosomal protein L17-A.

Mol	Chain	Residues	Atoms				AltConf	Trace
			Total	C	N	O		
7	P	51	433	269	92	72	0	0

- Molecule 8 is a protein called 60S ribosomal protein L19-A.

Mol	Chain	Residues	Atoms				AltConf	Trace
			Total	C	N	O		
8	R	134	1082	679	220	183	0	0

- Molecule 9 is a protein called 60S ribosomal protein L22-A.

Mol	Chain	Residues	Atoms				AltConf	Trace
			Total	C	N	O		
9	U	102	808	524	132	152	0	0

- Molecule 10 is a protein called 60S ribosomal protein L25.

Mol	Chain	Residues	Atoms					AltConf	Trace
			Total	C	N	O	S		
10	X	98	786	502	138	144	2	0	0

- Molecule 11 is a protein called 60S ribosomal protein L27-A.

Mol	Chain	Residues	Atoms				AltConf	Trace
			Total	C	N	O		
11	Z	135	1092	710	202	180	0	0

- Molecule 12 is a protein called Nucleolar GTP-binding protein 1.

Mol	Chain	Residues	Atoms					AltConf	Trace
			Total	C	N	O	S		
12	b	53	431	267	86	74	4	0	0

- Molecule 13 is a protein called 60S ribosomal protein L30.

Mol	Chain	Residues	Atoms					AltConf	Trace
			Total	C	N	O	S		
13	c	97	743	479	124	139	1	0	0

- Molecule 14 is a protein called 60S ribosomal protein L31-A.

Mol	Chain	Residues	Atoms					AltConf	Trace
14	d	72	Total	C	N	O	S	0	0
			593	384	115	93	1		

- Molecule 15 is a protein called 60S ribosomal protein L34-A.

Mol	Chain	Residues	Atoms					AltConf	Trace
15	g	112	Total	C	N	O	S	0	0
			881	546	179	152	4		

- Molecule 16 is a protein called 60S ribosomal protein L37-A.

Mol	Chain	Residues	Atoms					AltConf	Trace
16	j	27	Total	C	N	O	S	0	0
			212	127	45	36	4		

- Molecule 17 is a protein called 60S ribosomal protein L38.

Mol	Chain	Residues	Atoms				AltConf	Trace
17	k	77	Total	C	N	O	0	0
			612	391	115	106		

- Molecule 18 is a protein called Ribosome biogenesis protein ERB1.

Mol	Chain	Residues	Atoms					AltConf	Trace
18	m	412	Total	C	N	O	S	0	0
			3302	2123	583	586	10		

- Molecule 19 is a protein called Pescadillo homolog.

Mol	Chain	Residues	Atoms					AltConf	Trace
19	n	103	Total	C	N	O	S	0	0
			861	544	164	148	5		

- Molecule 20 is a protein called Ribosome biogenesis protein YTM1.

Mol	Chain	Residues	Atoms					AltConf	Trace
20	p	337	Total	C	N	O	S	0	0
			2629	1634	470	518	7		

There is a discrepancy between the modelled and reference sequences:

Chain	Residue	Modelled	Actual	Comment	Reference
p	454	ALA	GLY	conflict	UNP A6ZPA9

- Molecule 21 is a protein called Ribosome biogenesis protein RLP7.

Mol	Chain	Residues	Atoms				AltConf	Trace
21	t	26	Total	C	N	O	0	0
			221	132	49	40		

- Molecule 22 is a protein called Ribosome biogenesis protein RLP24.

Mol	Chain	Residues	Atoms					AltConf	Trace
22	u	56	Total	C	N	O	S	0	0
			481	303	98	79	1		

- Molecule 23 is a protein called 27S pre-rRNA (guanosine(2922)-2'-O)-methyltransferase.

Mol	Chain	Residues	Atoms					AltConf	Trace
23	w	189	Total	C	N	O	S	0	0
			1562	957	287	309	9		

- Molecule 24 is a protein called ATP-dependent rRNA helicase SPB4.

Mol	Chain	Residues	Atoms					AltConf	Trace
24	x	539	Total	C	N	O	S	0	0
			4340	2781	744	795	20		

There is a discrepancy between the modelled and reference sequences:

Chain	Residue	Modelled	Actual	Comment	Reference
x	405	ALA	THR	conflict	UNP A7A237

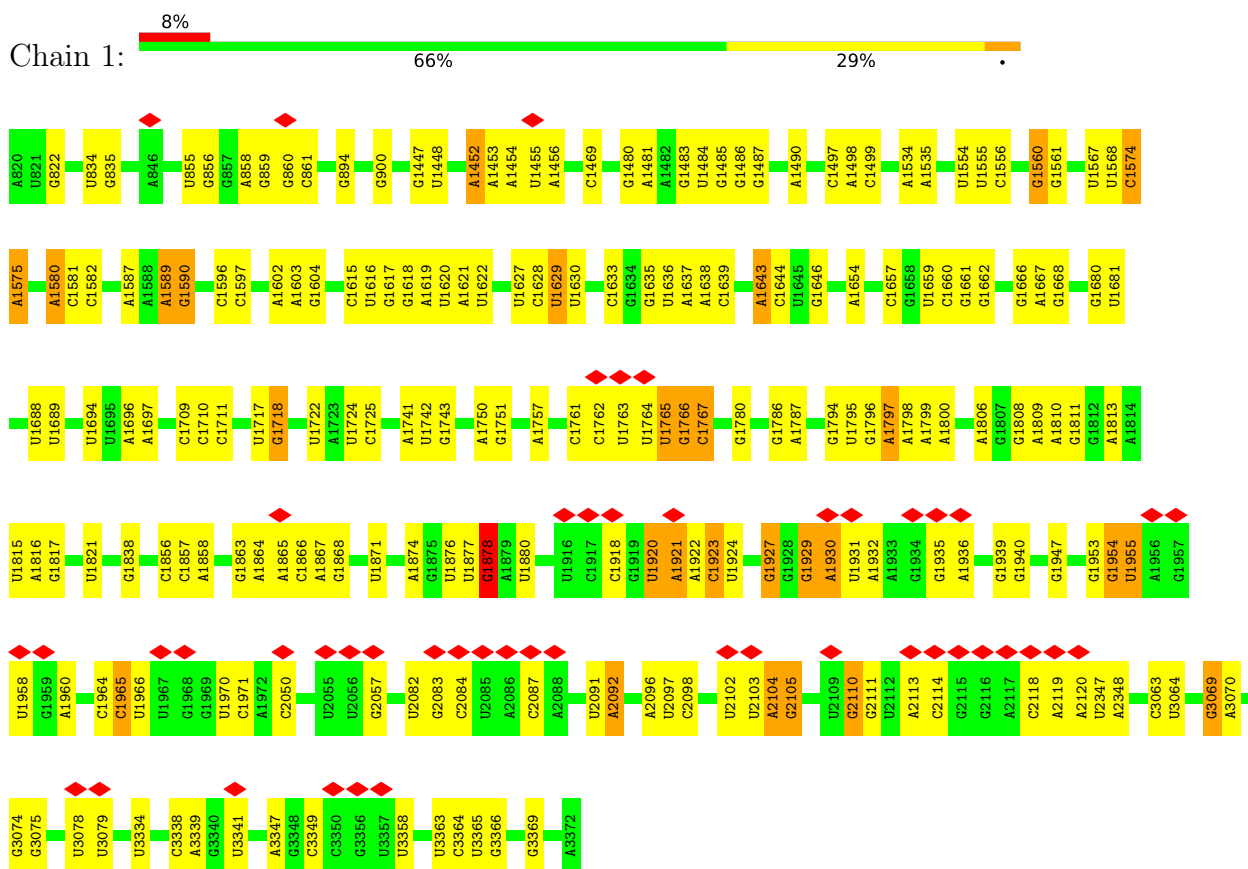
- Molecule 25 is ZINC ION (three-letter code: ZN) (formula: Zn).

Mol	Chain	Residues	Atoms		AltConf
25	g	1	Total	Zn	0
			1	1	

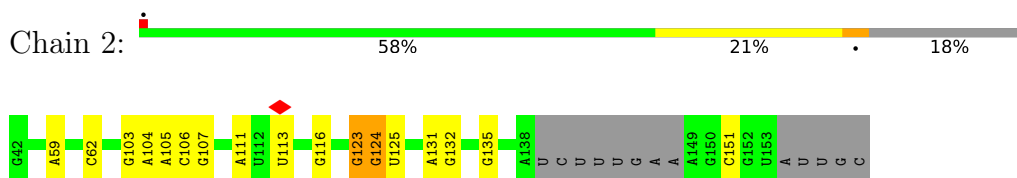
3 Residue-property plots [i](#)

These plots are drawn for all protein, RNA, DNA and oligosaccharide chains in the entry. The first graphic for a chain summarises the proportions of the various outlier classes displayed in the second graphic. The second graphic shows the sequence view annotated by issues in geometry and atom inclusion in map density. Residues are color-coded according to the number of geometric quality criteria for which they contain at least one outlier: green = 0, yellow = 1, orange = 2 and red = 3 or more. A red diamond above a residue indicates a poor fit to the EM map for this residue (all-atom inclusion < 40%). Stretches of 2 or more consecutive residues without any outlier are shown as a green connector. Residues present in the sample, but not in the model, are shown in grey.

- Molecule 1: 25S rRNA



- Molecule 2: 5.8S rRNA



- Molecule 3: Nucleolar complex protein 2



THR
ALA
SER
LYS
PHE
GLY
LYS
GLY
ARG
PHE
GLN
THR
PRO
ALA
GLU
LYS
HIS
ALA
F379
L387

- Molecule 5: 60S ribosomal protein L8-A

Chain G:  7% . 93%

MET
ALA
PRO
GLY
LYS
PHE
VAL
ALA
TYR
THR
ASP
LEU
ALA
PHE
ARG
ASN
GLY
ALA
L46
S47
R48
K51
I64
LEU
SER
ILE
ARG
LEU
VAL
PRO

PRO
THR
ILE
ALA
GLN
PHE
VAL
TYR
THR
ASP
LEU
ALA
PHE
ARG
ASN
GLY
ALA
L46
S47
R48
K51
I64
LEU
SER
ILE
ARG
LEU
VAL
PRO

LYS
TYR
GLY
LEU
ASN
HIS
VAL
VAL
ALA
THR
LEU
GLU
ILE
ASN
LYS
LYS
LYS
ALA
VAL
LEU
ILE
ALA
VAL
ASN
VAL
SER
THR
VAL
ASP
ASP
PHE
TYR
LYS
PHE
LEU
ALA
VAL
VAL
PHE
LEU
CYS
LYS
LYS
TRP
MET
GLY
VAL
VAL
TYR
ILE
LEU
ALA
GLY
ILE
ASN
LYS
ALA
GLN
LYS
ARG
MET
SER
GLY
THR
LYS
ARG
ALA
VAL
ASN

LYS
THR
SER
ALA
VAL
ALA
LEU
THR
VAL
GLU
ARG
GLU
ASP
GLU
ALA
VAL
LEU
ALA
LYS
LYS
LEU
LEU
ALA
VAL
ILE
ASP
ASP
PHE
TYR
LYS
PHE
LEU
ALA
VAL
VAL
PHE
LEU
CYS
LYS
LYS
TRP
MET
GLY
VAL
VAL
TYR
ILE
LEU
ALA
GLY
ILE
ASN
LYS
ALA
GLN
LYS
ARG
MET
SER
GLY
THR
LYS
ARG
ALA
VAL
ASN

SER
ASP
SER
ALA

- Molecule 6: Nucleolar complex-associated protein 3

Chain I:  44% 6% 50%

MET
ALA
LYS
ARG
ASN
ARG
SER
GLN
PHE
SER
ASN
ILE
GLN
GLU
ARG
THR
ALA
LYS
LYS
ARG
HIS
ASN
GLY
ASP
SER
LEU
LEU
GLY
GLU
PHE
VAL
GLN
ASN
PRO
GLU
ALA
LYS
ASP
ASP
MET
ASP
GLU
GLU
THR
THR
ILE
SER
ALA
LYS
GLY
SER
SER
GLU
TRP
ASP
GLY
GLU
GLU
GLN
ASP
TYR
MET

VAL
PRO
ARG
LYS
ASN
ARG
SER
ASP
THR
SER
ASN
LEU
VAL
GLU
GLY
ILE
VAL
VAL
ASN
HIS
GLY
LYS
VAL
PHE
GLN
GLU
LYS
PRO
GLU
ALA
LYS
ASP
ASP
ASP
GLU
GLU
THR
THR
ILE
SER
ALA
LYS
GLY
SER
SER
GLU
TRP
ASP
GLY
GLU
GLU
GLN
ASP
TYR
MET

ALA
GLU
ALA
LYS
GLU
ASP
GLU
PRO
ASP
T130
E131
E132
D143
K147
E154
A157
A158
R161
V166
M178
L179
A180
P183
Y192
T198
E199
T200
K203
E204
K205
V206
S207
K208
R214
E217
Q218
K225
Y226
Y227
S239
L251
F268

I280
C281
K282
P283
I292
Q293
I294
S332
V333
L334
N335
L338
D347
T350
K353
G354
N355
V356
S357
A358
P359
K371
F411
Y414
L418
K419
N420
N421
A422
K423
T434
K435
A440
N441
PHE
ASP
LEU
LEU
PRO
TYR
ILE
CYS
ASP
PHE
LEU
LEU
VAL
VAL
LYS
GLU
LEU
ASP
ALA
ALA
TYR
MET
CYS
ILE
ALA
SER
HIS
THR
GLY
PRO
GLU
PHE
LEU
HIS
TYR
THR
CYS
PRO

ILE
SER
THR
PHE
PHE
ASN
SER
SER
ALA
ALA
VAL
ARG
THR
ALA
LEU
LEU
CYS
ILE
VAL
SER
VAL
SER
PHE
ALA
PHE
SER
LEU
ILE
VAL
ASN
SER
THR
GLN
TYR
MET
LYS
GLY
VAL
VAL
ASN
VAL
ASP
LEU
SER
SER
THR
SER
LYS
PHE
PHE
VAL
ASP
GLY
ALA
TYR
TYR
CYS
ALA
LEU
LEU
ILE
SER
HIS
THR
CYS
ASP
PHE
LEU
LEU
VAL
VAL
LYS
GLU
LEU

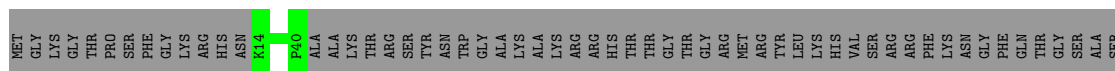
GLU
LEU
SER
PHE
PHE
ASP
LYS
MET
SER
ASN
ARG
TYR
PRO
GLU
THR
ILE
GLY
LEU
ALA
GLU
LEU
SER
SER
GLU
SER
ASP
ALA
ASP
HIS
VAL
PHE
PHE
ARG
SER
LYS
GLY
THR
GLU
ARG
ALA
THR
ALA
PHE
THR
LYS
THR
LEU
TYR
MET
CYS
ILE
ALA
SER
HIS
THR
GLY
PRO
GLU
PHE
LEU
HIS
TYR
THR
CYS
PRO

ALA
ILE
LEU
PHE
ILE
ASP
LYS
MET
SER
ASN
ARG
TYR
PRO
GLU
THR
ILE
GLY
LEU
ALA
GLU
LEU
SER
SER
GLU
SER
ASP
ALA
ASP
HIS
VAL
PHE
PHE
ARG
SER
LYS
GLY
THR
GLU
ARG
ALA
THR
ALA
PHE
THR
LYS
THR
LEU
TYR
MET
CYS
ILE
ALA
SER
HIS
THR
GLY
PRO
GLU
PHE
LEU
HIS
TYR
THR
CYS
PRO

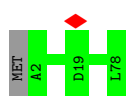
VAL
VAL
THR
LYS
GLY
LEU
ARG
SER
SER
SER
SER
ARG
SER
LYS
GLU
CYS
SER
LYS

- Molecule 7: 60S ribosomal protein L17-A

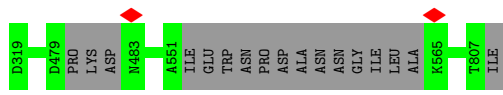
Chain P:  22% 5% 72%



- Molecule 17: 60S ribosomal protein L38



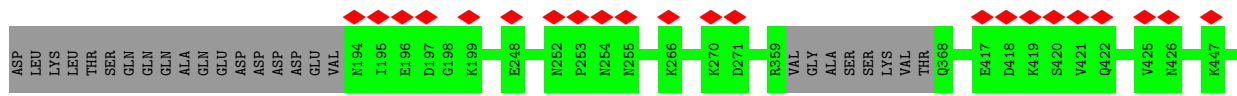
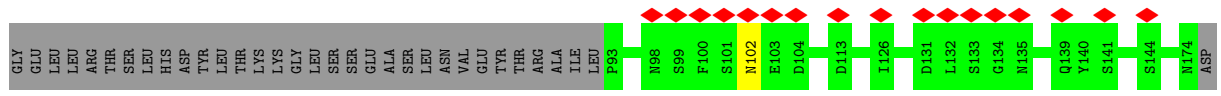
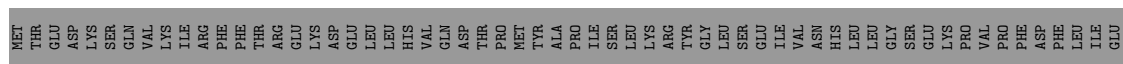
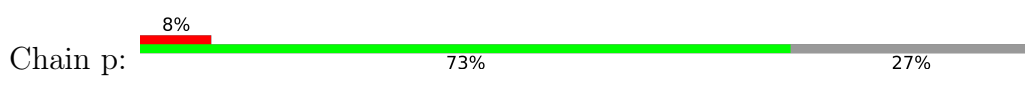
- Molecule 18: Ribosome biogenesis protein ERB1



- Molecule 19: Pescadillo homolog

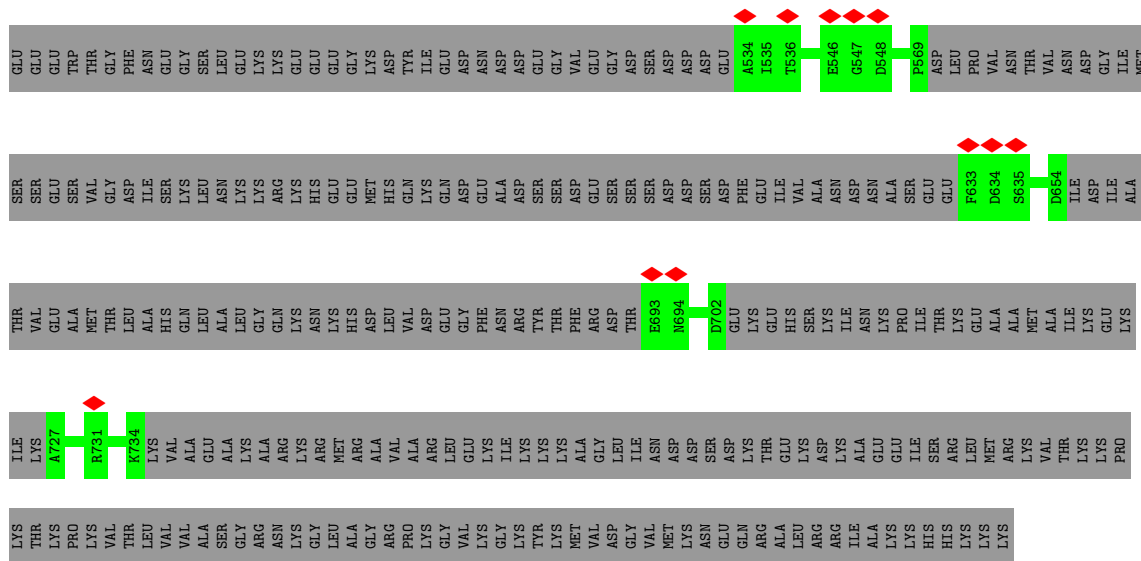


- Molecule 20: Ribosome biogenesis protein YTM1

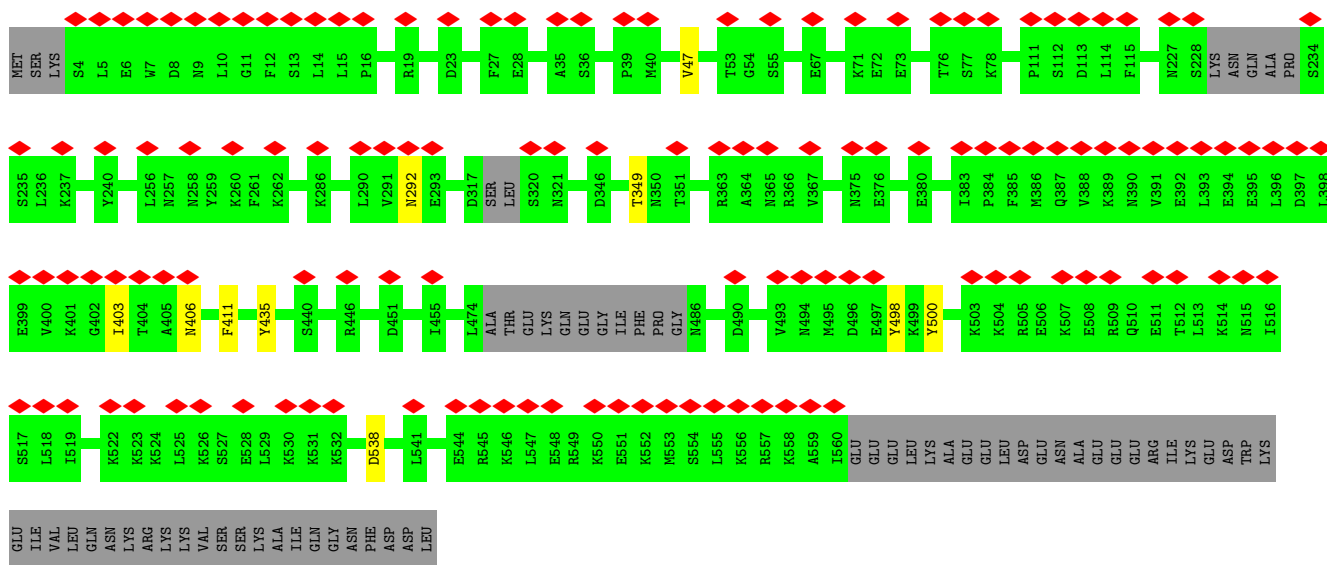
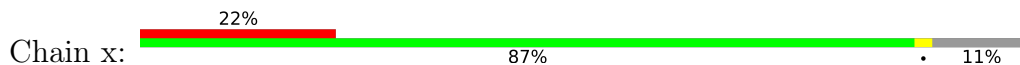


- Molecule 21: Ribosome biogenesis protein RLP7





- Molecule 24: ATP-dependent rRNA helicase SPB4



4 Experimental information

Property	Value	Source
EM reconstruction method	SINGLE PARTICLE	Depositor
Imposed symmetry	POINT, C1	Depositor
Number of particles used	211000	Depositor
Resolution determination method	FSC 0.143 CUT-OFF	Depositor
CTF correction method	NONE	Depositor
Microscope	FEI TITAN KRIOS	Depositor
Voltage (kV)	300	Depositor
Electron dose ($e^-/\text{\AA}^2$)	1.2	Depositor
Minimum defocus (nm)	900	Depositor
Maximum defocus (nm)	2200	Depositor
Magnification	81000	Depositor
Image detector	GATAN K3 (6k x 4k)	Depositor
Maximum map value	0.109	Depositor
Minimum map value	-0.056	Depositor
Average map value	0.000	Depositor
Map value standard deviation	0.002	Depositor
Recommended contour level	0.012	Depositor
Map size (\AA)	453.6, 453.6, 453.6	wwPDB
Map dimensions	420, 420, 420	wwPDB
Map angles ($^\circ$)	90.0, 90.0, 90.0	wwPDB
Pixel spacing (\AA)	1.08, 1.08, 1.08	Depositor

5 Model quality i

5.1 Standard geometry i

Bond lengths and bond angles in the following residue types are not validated in this section:
ZN

The Z score for a bond length (or angle) is the number of standard deviations the observed value is removed from the expected value. A bond length (or angle) with $|Z| > 5$ is considered an outlier worth inspection. RMSZ is the root-mean-square of all Z scores of the bond lengths (or angles).

Mol	Chain	Bond lengths		Bond angles	
		RMSZ	# Z >5	RMSZ	# Z >5
1	1	0.29	0/15338	0.78	5/23887 (0.0%)
2	2	0.28	0/1398	0.76	0/2169
3	8	0.23	0/482	0.49	0/630
4	B	0.23	0/72	0.36	0/93
5	G	0.26	0/179	0.53	0/239
6	I	0.25	0/2708	0.49	0/3643
7	P	0.23	0/439	0.57	0/579
8	R	0.26	0/1095	0.51	0/1465
9	U	0.27	0/825	0.48	0/1120
10	X	0.28	0/794	0.49	0/1066
11	Z	0.27	0/1118	0.46	0/1497
12	b	0.23	0/436	0.50	0/575
13	c	0.26	0/751	0.44	0/1008
14	d	0.26	0/603	0.52	0/804
15	g	0.28	0/891	0.54	0/1191
16	j	0.26	0/216	0.58	0/286
17	k	0.26	0/618	0.51	0/826
18	m	0.26	0/3387	0.52	0/4594
19	n	0.27	0/872	0.48	0/1151
20	p	0.26	0/2675	0.53	0/3625
21	t	0.23	0/221	0.62	0/294
22	u	0.24	0/487	0.59	1/641 (0.2%)
23	w	0.24	0/1573	0.48	0/2081
24	x	0.26	0/4419	0.49	0/5958
All	All	0.27	0/41597	0.64	6/59422 (0.0%)

There are no bond length outliers.

The worst 5 of 6 bond angle outliers are listed below:

Continued on next page...

Continued from previous page...

Mol	Chain	Res	Type	Atoms	Z	Observed(°)	Ideal(°)
1	1	1560	G	C8-N9-C1'	5.27	133.84	127.00
22	u	119	ASP	CB-CG-OD2	5.21	122.99	118.30
1	1	1560	G	C4-N9-C1'	-5.18	119.76	126.50
1	1	1923	C	C2-N1-C1'	5.12	124.43	118.80
1	1	1878	G	C4-N9-C1'	5.03	133.04	126.50

There are no chirality outliers.

There are no planarity outliers.

5.2 Too-close contacts [\(i\)](#)

In the following table, the Non-H and H(model) columns list the number of non-hydrogen atoms and hydrogen atoms in the chain respectively. The H(added) column lists the number of hydrogen atoms added and optimized by MolProbity. The Clashes column lists the number of clashes within the asymmetric unit, whereas Symm-Clashes lists symmetry-related clashes.

Mol	Chain	Non-H	H(model)	H(added)	Clashes	Symm-Clashes
1	1	13716	0	6905	107	0
2	2	1255	0	640	5	0
3	8	480	0	518	8	0
4	B	72	0	79	0	0
5	G	175	0	188	1	0
6	I	2675	0	2797	31	0
7	P	433	0	434	7	0
8	R	1082	0	1160	16	0
9	U	808	0	822	10	0
10	X	786	0	841	4	0
11	Z	1092	0	1155	9	0
12	b	431	0	460	0	0
13	c	743	0	797	0	0
14	d	593	0	640	0	0
15	g	881	0	945	0	0
16	j	212	0	210	0	0
17	k	612	0	682	0	0
18	m	3302	0	3354	0	0
19	n	861	0	920	0	0
20	p	2629	0	2614	0	0
21	t	221	0	233	0	0
22	u	481	0	511	0	0

Continued on next page...

Continued from previous page...

Mol	Chain	Non-H	H(model)	H(added)	Clashes	Symm-Clashes
23	w	1562	0	1554	0	0
24	x	4340	0	4468	0	0
25	g	1	0	0	0	0
All	All	39443	0	32927	177	0

The all-atom clashscore is defined as the number of clashes found per 1000 atoms (including hydrogen atoms). The all-atom clashscore for this structure is 7.

The worst 5 of 177 close contacts within the same asymmetric unit are listed below, sorted by their clash magnitude.

Atom-1	Atom-2	Interatomic distance (Å)	Clash overlap (Å)
1:1:1924:U:OP1	8:R:136:ARG:NH2	2.01	0.92
7:P:128:ARG:NH1	7:P:130:TYR:CE1	2.53	0.77
1:1:2082:U:H2'	1:1:2083:G:H8	1.54	0.72
1:1:1958:U:H3	1:1:2083:G:H1	1.35	0.72
1:1:1661:G:H2'	1:1:1662:G:C8	2.26	0.70

There are no symmetry-related clashes.

5.3 Torsion angles [i](#)

5.3.1 Protein backbone [i](#)

In the following table, the Percentiles column shows the percent Ramachandran outliers of the chain as a percentile score with respect to all PDB entries followed by that with respect to all EM entries.

The Analysed column shows the number of residues for which the backbone conformation was analysed, and the total number of residues.

Mol	Chain	Analysed	Favoured	Allowed	Outliers	Percentiles	
3	8	56/710 (8%)	56 (100%)	0	0	100	100
4	B	7/387 (2%)	7 (100%)	0	0	100	100
5	G	17/256 (7%)	16 (94%)	1 (6%)	0	100	100
6	I	330/663 (50%)	318 (96%)	12 (4%)	0	100	100
7	P	41/184 (22%)	38 (93%)	3 (7%)	0	100	100
8	R	130/189 (69%)	129 (99%)	1 (1%)	0	100	100
9	U	100/121 (83%)	96 (96%)	4 (4%)	0	100	100

Continued on next page...

Continued from previous page...

Mol	Chain	Analysed	Favoured	Allowed	Outliers	Percentiles	
10	X	94/142 (66%)	93 (99%)	1 (1%)	0	100	100
11	Z	133/136 (98%)	129 (97%)	4 (3%)	0	100	100
12	b	51/647 (8%)	49 (96%)	2 (4%)	0	100	100
13	c	95/105 (90%)	94 (99%)	1 (1%)	0	100	100
14	d	66/113 (58%)	62 (94%)	4 (6%)	0	100	100
15	g	110/121 (91%)	109 (99%)	1 (1%)	0	100	100
16	j	25/88 (28%)	25 (100%)	0	0	100	100
17	k	75/78 (96%)	73 (97%)	2 (3%)	0	100	100
18	m	404/429 (94%)	385 (95%)	19 (5%)	0	100	100
19	n	99/104 (95%)	95 (96%)	4 (4%)	0	100	100
20	p	331/460 (72%)	308 (93%)	23 (7%)	0	100	100
21	t	24/322 (8%)	24 (100%)	0	0	100	100
22	u	52/199 (26%)	52 (100%)	0	0	100	100
23	w	175/841 (21%)	171 (98%)	4 (2%)	0	100	100
24	x	531/606 (88%)	508 (96%)	22 (4%)	1 (0%)	47	77
All	All	2946/6901 (43%)	2837 (96%)	108 (4%)	1 (0%)	100	100

All (1) Ramachandran outliers are listed below:

Mol	Chain	Res	Type
24	x	406	ASN

5.3.2 Protein sidechains [i](#)

In the following table, the Percentiles column shows the percent sidechain outliers of the chain as a percentile score with respect to all PDB entries followed by that with respect to all EM entries.

The Analysed column shows the number of residues for which the sidechain conformation was analysed, and the total number of residues.

Mol	Chain	Analysed	Rotameric	Outliers	Percentiles	
3	8	52/647 (8%)	52 (100%)	0	100	100
4	B	8/323 (2%)	8 (100%)	0	100	100
5	G	19/208 (9%)	19 (100%)	0	100	100

Continued on next page...

Continued from previous page...

Mol	Chain	Analysed	Rotameric	Outliers	Percentiles	
6	I	306/602 (51%)	306 (100%)	0	100	100
7	P	46/146 (32%)	45 (98%)	1 (2%)	52	76
8	R	112/154 (73%)	112 (100%)	0	100	100
9	U	89/107 (83%)	88 (99%)	1 (1%)	73	88
10	X	87/118 (74%)	87 (100%)	0	100	100
11	Z	115/116 (99%)	115 (100%)	0	100	100
12	b	46/573 (8%)	46 (100%)	0	100	100
13	c	81/88 (92%)	81 (100%)	0	100	100
14	d	62/97 (64%)	62 (100%)	0	100	100
15	g	95/103 (92%)	95 (100%)	0	100	100
16	j	25/71 (35%)	25 (100%)	0	100	100
17	k	68/69 (99%)	68 (100%)	0	100	100
18	m	367/381 (96%)	367 (100%)	0	100	100
19	n	92/93 (99%)	92 (100%)	0	100	100
20	p	300/413 (73%)	299 (100%)	1 (0%)	92	96
21	t	24/287 (8%)	24 (100%)	0	100	100
22	u	49/180 (27%)	49 (100%)	0	100	100
23	w	171/745 (23%)	171 (100%)	0	100	100
24	x	489/548 (89%)	480 (98%)	9 (2%)	59	80
All	All	2703/6069 (44%)	2691 (100%)	12 (0%)	91	95

5 of 12 residues with a non-rotameric sidechain are listed below:

Mol	Chain	Res	Type
24	x	411	PHE
24	x	435	TYR
24	x	538	ASP
24	x	498	TYR
24	x	47	VAL

Sometimes sidechains can be flipped to improve hydrogen bonding and reduce clashes. All (4) such sidechains are listed below:

Mol	Chain	Res	Type
3	8	55	GLN

Continued on next page...

Continued from previous page...

Mol	Chain	Res	Type
12	b	500	GLN
20	p	342	ASN
20	p	396	HIS

5.3.3 RNA [i](#)

Mol	Chain	Analysed	Backbone Outliers	Pucker Outliers
1	1	629/641 (98%)	107 (17%)	2 (0%)
2	2	55/72 (76%)	10 (18%)	1 (1%)
All	All	684/713 (95%)	117 (17%)	3 (0%)

5 of 117 RNA backbone outliers are listed below:

Mol	Chain	Res	Type
1	1	822	G
1	1	860	G
1	1	861	C
1	1	1452	A
1	1	1454	A

All (3) RNA pucker outliers are listed below:

Mol	Chain	Res	Type
1	1	1574	C
1	1	1954	G
2	2	123	G

5.4 Non-standard residues in protein, DNA, RNA chains [i](#)

There are no non-standard protein/DNA/RNA residues in this entry.

5.5 Carbohydrates [i](#)

There are no monosaccharides in this entry.

5.6 Ligand geometry [i](#)

Of 1 ligands modelled in this entry, 1 is monoatomic - leaving 0 for Mogul analysis.

There are no bond length outliers.

There are no bond angle outliers.

There are no chirality outliers.

There are no torsion outliers.

There are no ring outliers.

No monomer is involved in short contacts.

5.7 Other polymers [i](#)

There are no such residues in this entry.

5.8 Polymer linkage issues [i](#)

The following chains have linkage breaks:

Mol	Chain	Number of breaks
1	1	12
2	2	2
19	n	1
18	m	1

The worst 5 of 16 chain breaks are listed below:

Model	Chain	Residue-1	Atom-1	Residue-2	Atom-2	Distance (Å)
1	1	905:U	O3'	1446:A	P	67.43
1	n	70:TYR	C	550:GLU	N	62.35
1	1	2356:A	O3'	3061:G	P	60.76
1	1	1884:A	O3'	1916:U	P	56.47
1	1	2120:A	O3'	2347:U	P	35.66

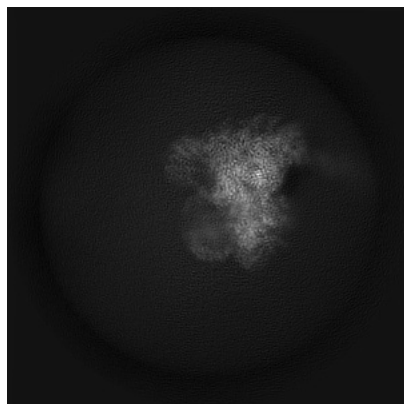
6 Map visualisation [i](#)

This section contains visualisations of the EMDB entry EMD-24290. These allow visual inspection of the internal detail of the map and identification of artifacts.

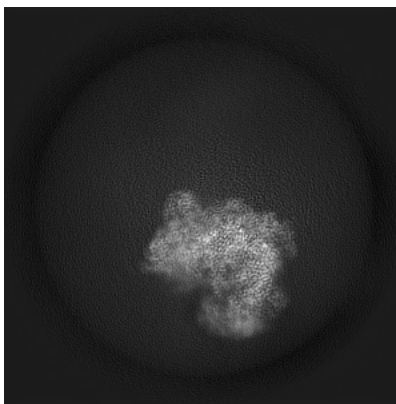
Images derived from a raw map, generated by summing the deposited half-maps, are presented below the corresponding image components of the primary map to allow further visual inspection and comparison with those of the primary map.

6.1 Orthogonal projections [i](#)

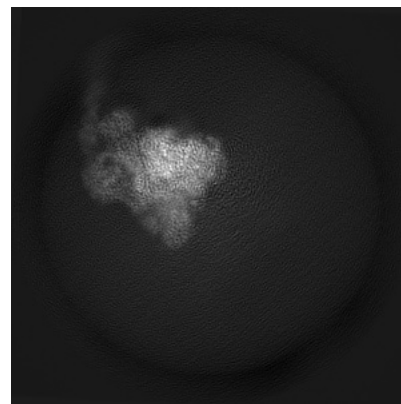
6.1.1 Primary map



X

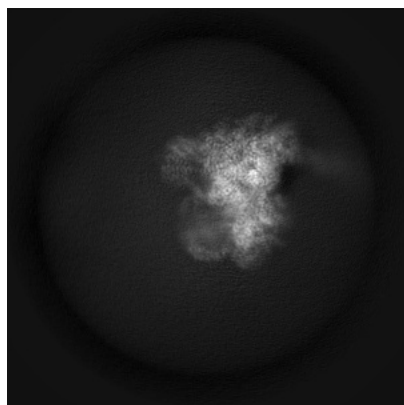


Y

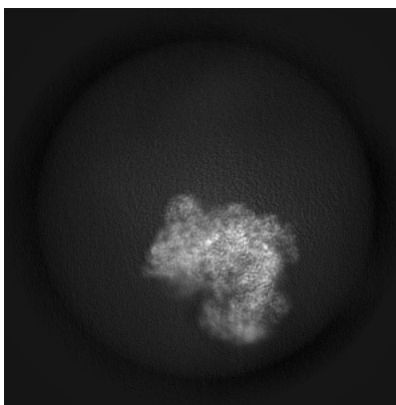


Z

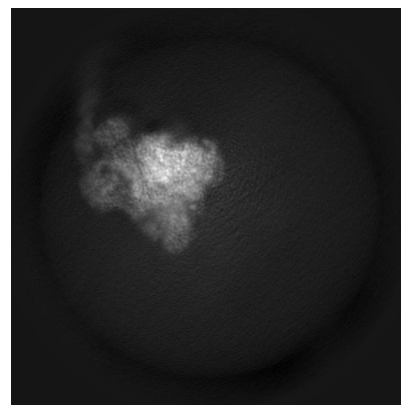
6.1.2 Raw map



X



Y

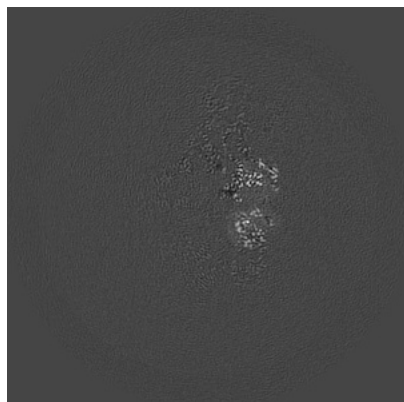


Z

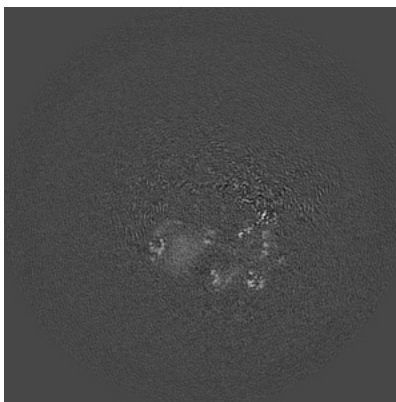
The images above show the map projected in three orthogonal directions.

6.2 Central slices [i](#)

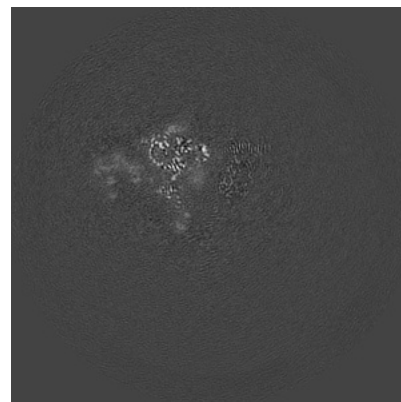
6.2.1 Primary map



X Index: 210

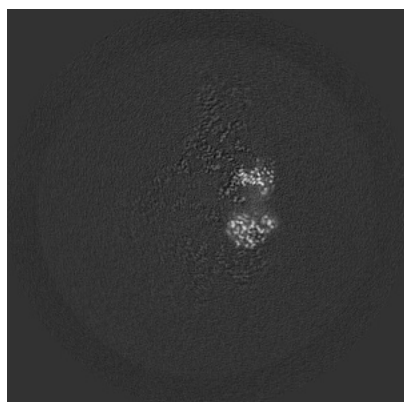


Y Index: 210

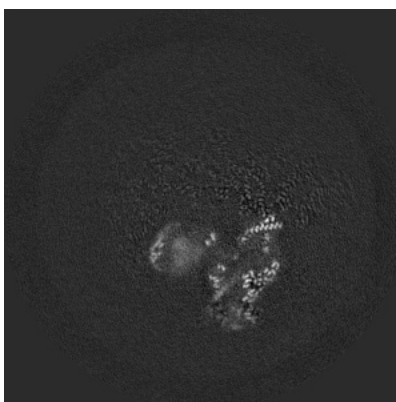


Z Index: 210

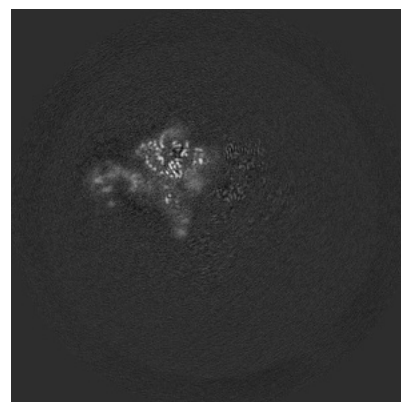
6.2.2 Raw map



X Index: 210



Y Index: 210

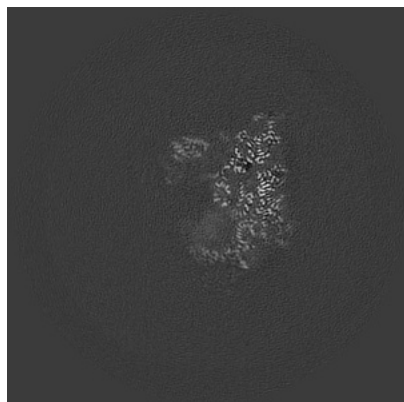


Z Index: 210

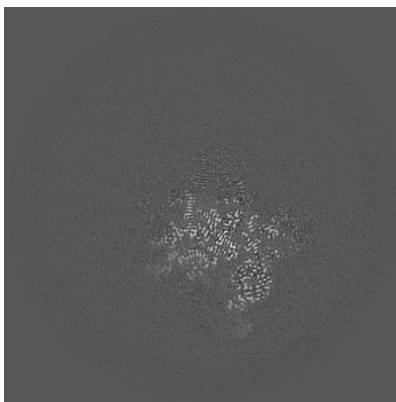
The images above show central slices of the map in three orthogonal directions.

6.3 Largest variance slices [i](#)

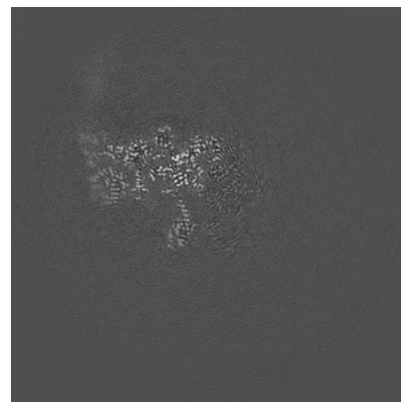
6.3.1 Primary map



X Index: 161

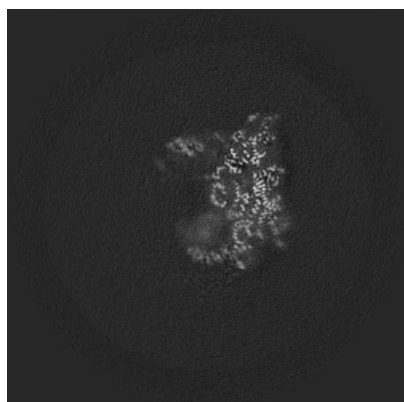


Y Index: 271

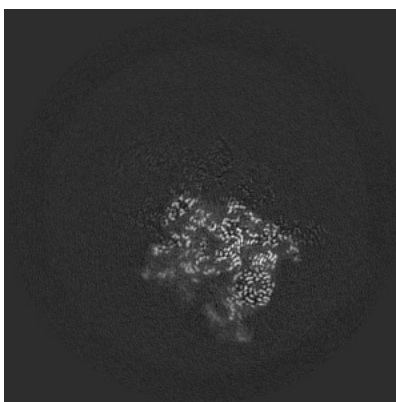


Z Index: 247

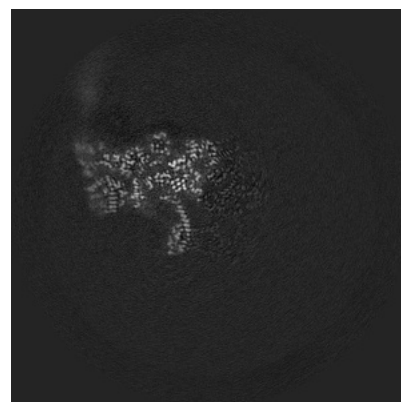
6.3.2 Raw map



X Index: 158



Y Index: 260

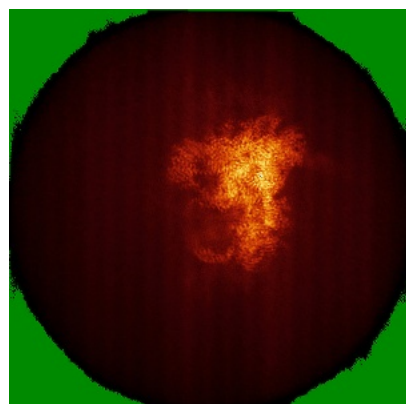


Z Index: 249

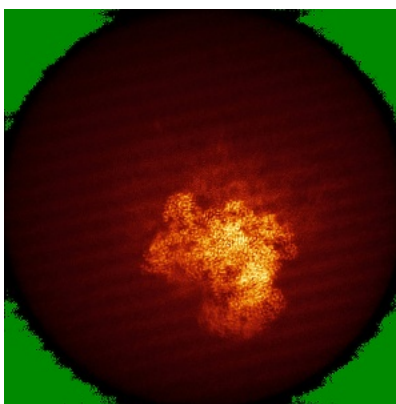
The images above show the largest variance slices of the map in three orthogonal directions.

6.4 Orthogonal standard-deviation projections (False-color) [i](#)

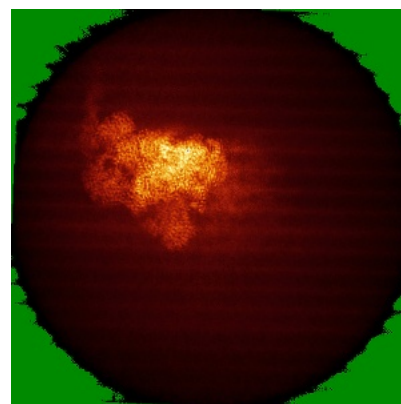
6.4.1 Primary map



X



Y

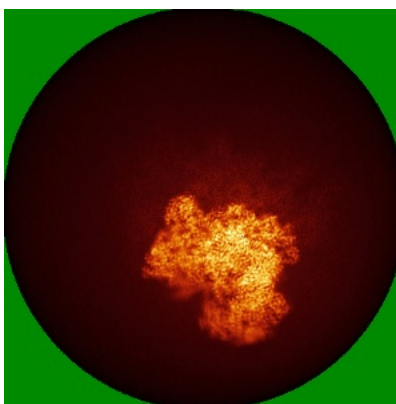


Z

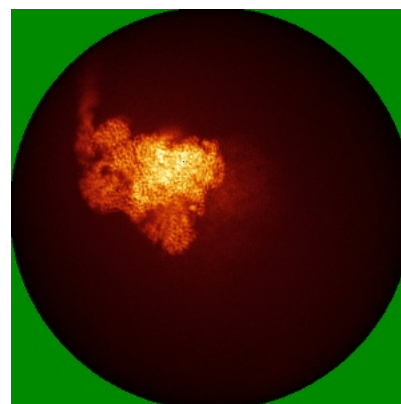
6.4.2 Raw map



X



Y



Z

The images above show the map standard deviation projections with false color in three orthogonal directions. Minimum values are shown in green, max in blue, and dark to light orange shades represent small to large values respectively.

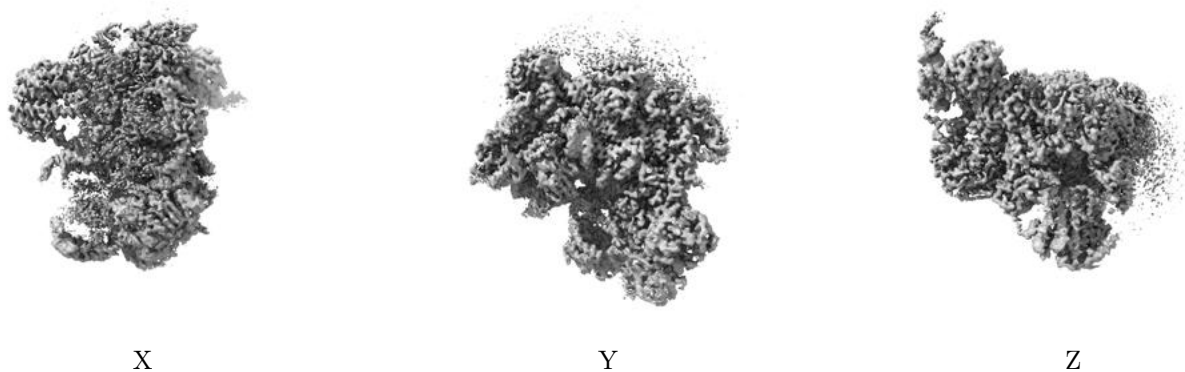
6.5 Orthogonal surface views [i](#)

6.5.1 Primary map



The images above show the 3D surface view of the map at the recommended contour level 0.012. These images, in conjunction with the slice images, may facilitate assessment of whether an appropriate contour level has been provided.

6.5.2 Raw map



These images show the 3D surface of the raw map. The raw map's contour level was selected so that its surface encloses the same volume as the primary map does at its recommended contour level.

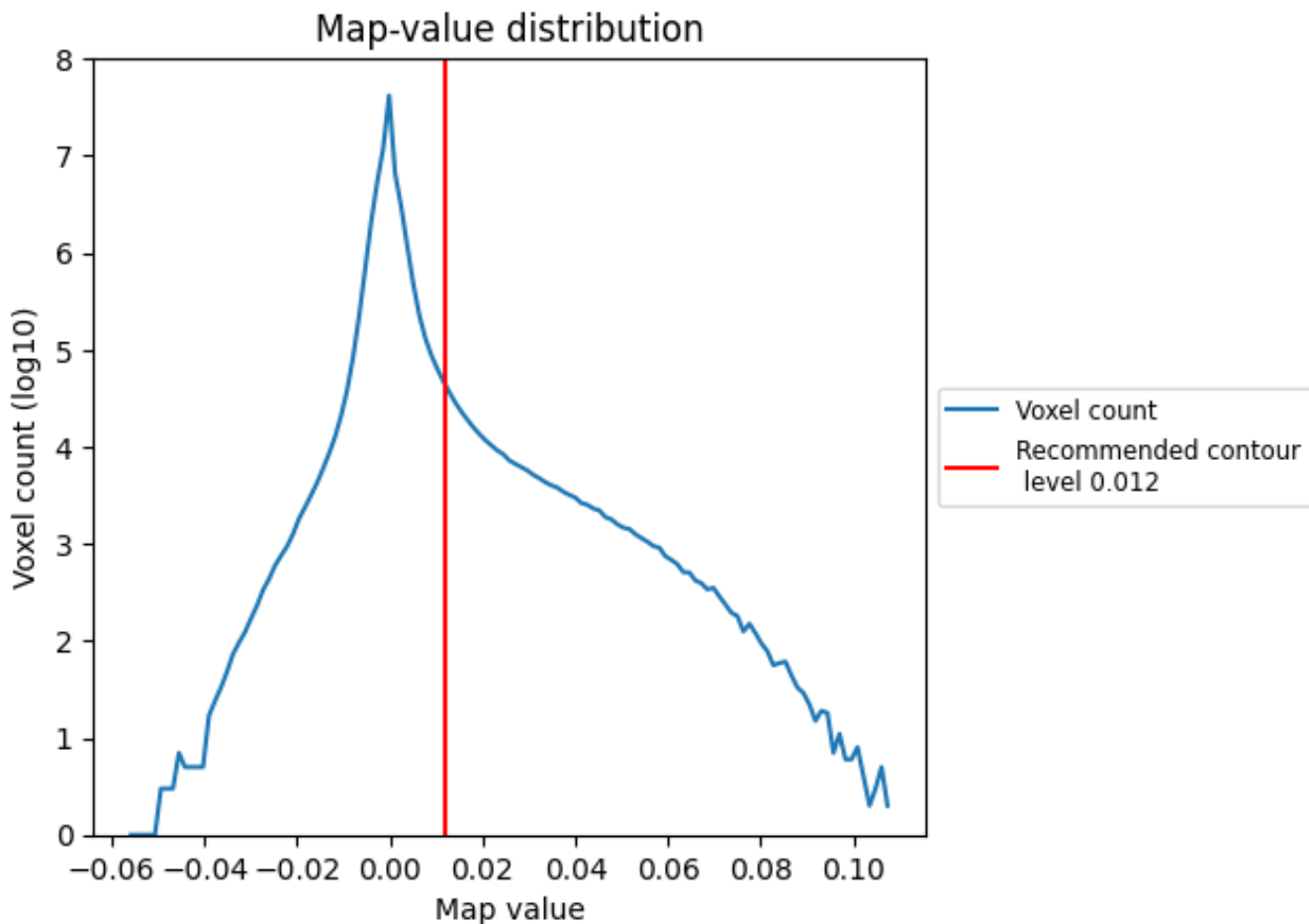
6.6 Mask visualisation [i](#)

This section was not generated. No masks/segmentation were deposited.

7 Map analysis [i](#)

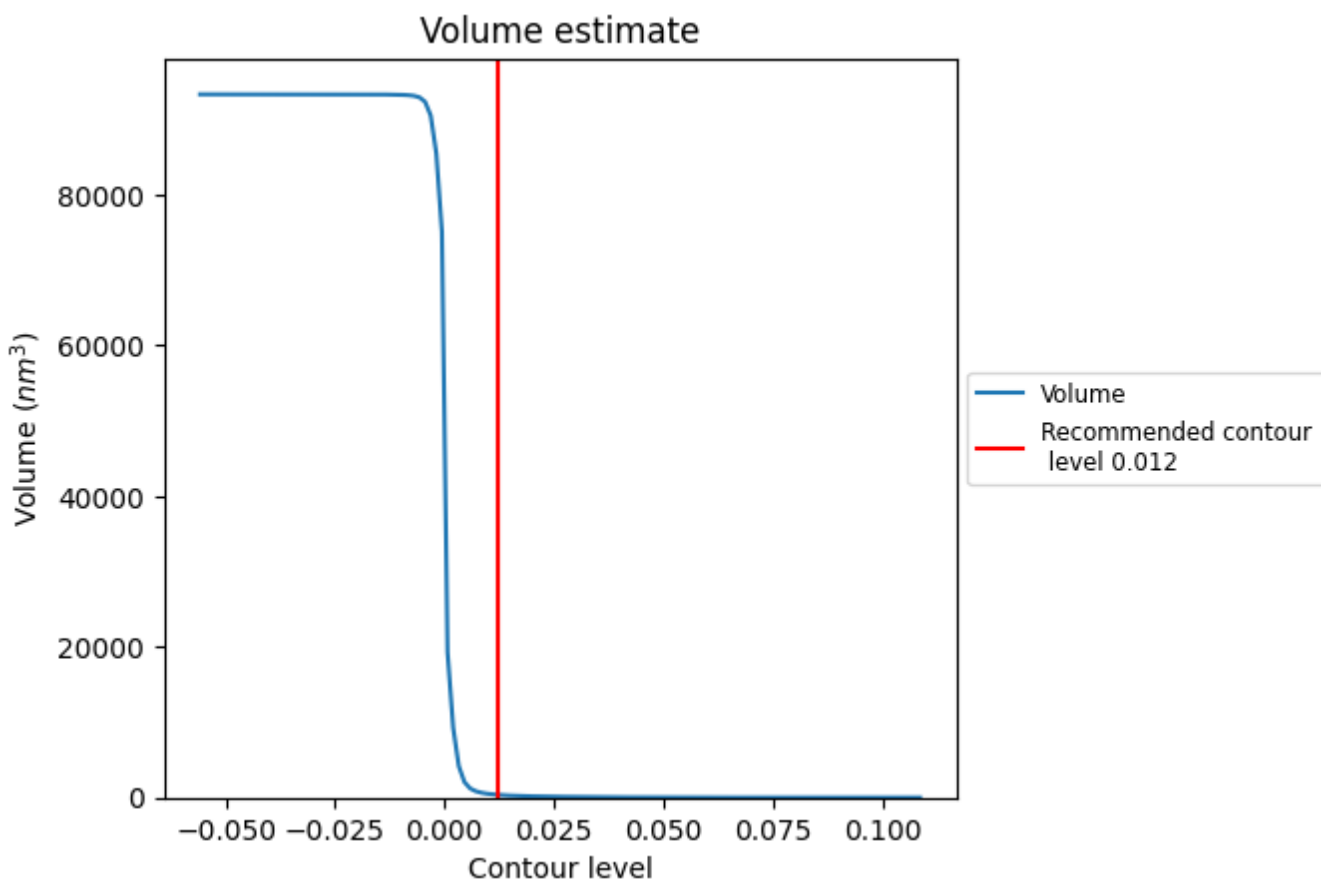
This section contains the results of statistical analysis of the map.

7.1 Map-value distribution [i](#)



The map-value distribution is plotted in 128 intervals along the x-axis. The y-axis is logarithmic. A spike in this graph at zero usually indicates that the volume has been masked.

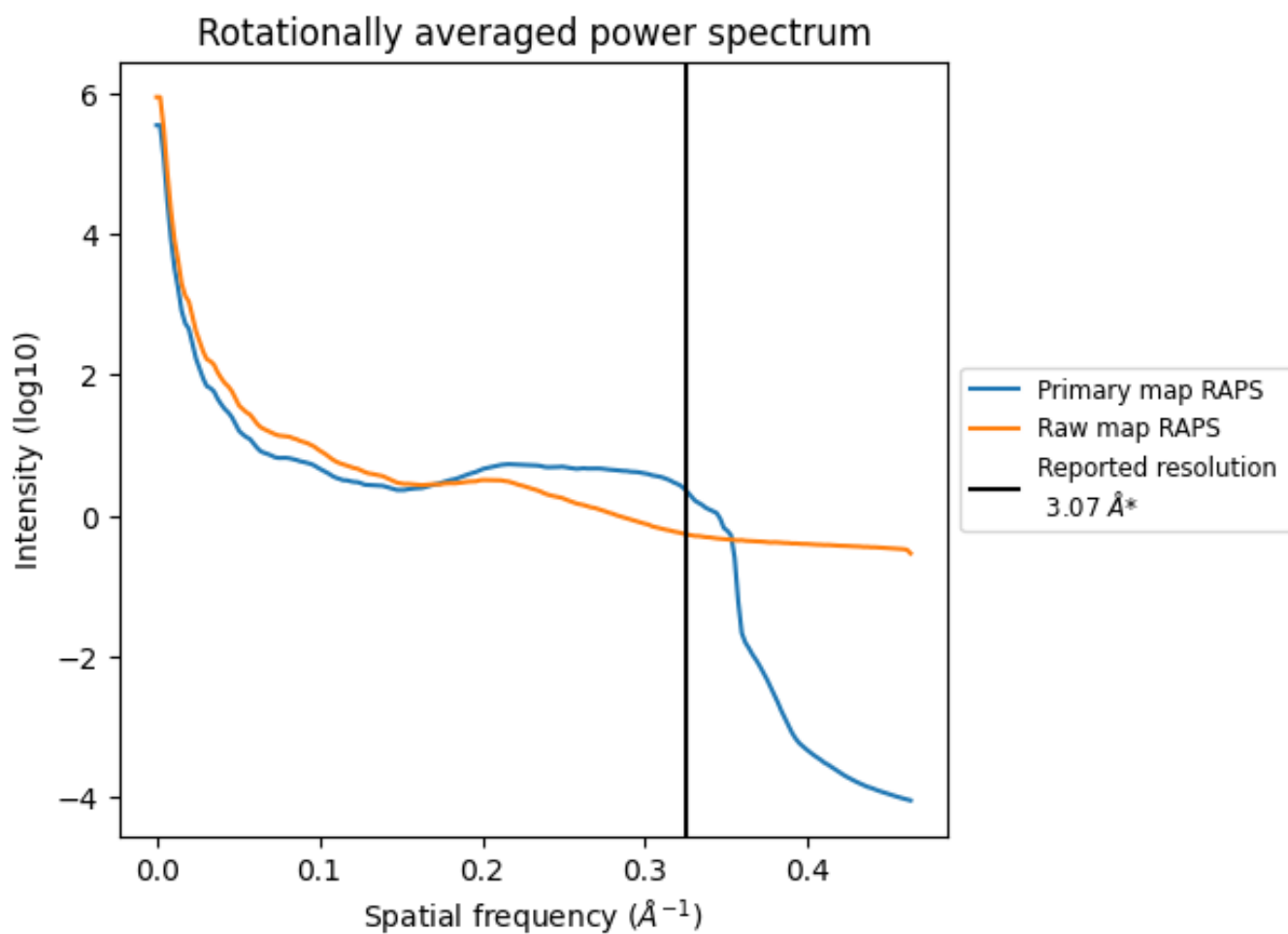
7.2 Volume estimate [\(i\)](#)



The volume at the recommended contour level is 369 nm^3 ; this corresponds to an approximate mass of 334 kDa.

The volume estimate graph shows how the enclosed volume varies with the contour level. The recommended contour level is shown as a vertical line and the intersection between the line and the curve gives the volume of the enclosed surface at the given level.

7.3 Rotationally averaged power spectrum [i](#)

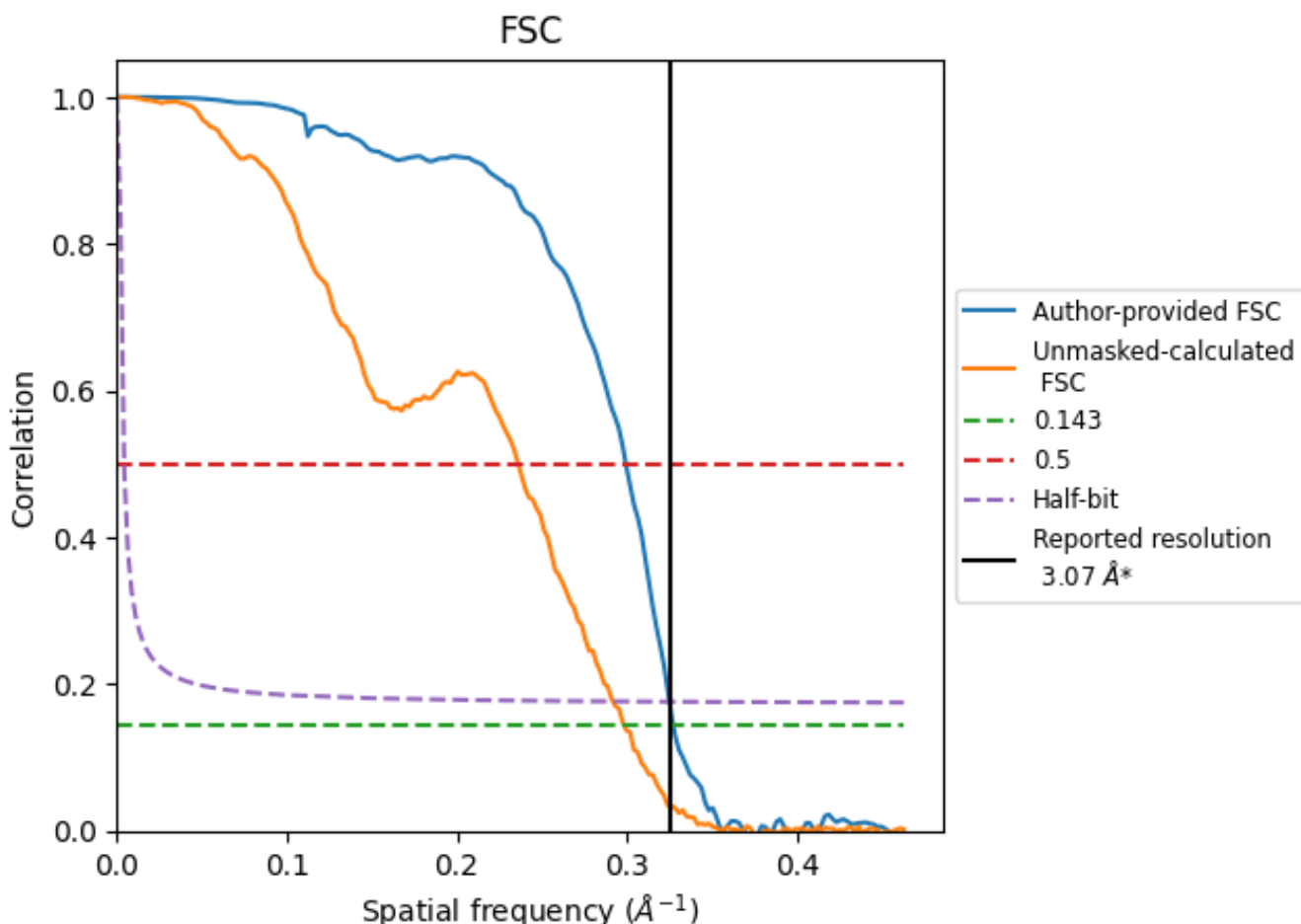


*Reported resolution corresponds to spatial frequency of 0.326 \AA^{-1}

8 Fourier-Shell correlation [i](#)

Fourier-Shell Correlation (FSC) is the most commonly used method to estimate the resolution of single-particle and subtomogram-averaged maps. The shape of the curve depends on the imposed symmetry, mask and whether or not the two 3D reconstructions used were processed from a common reference. The reported resolution is shown as a black line. A curve is displayed for the half-bit criterion in addition to lines showing the 0.143 gold standard cut-off and 0.5 cut-off.

8.1 FSC [i](#)



*Reported resolution corresponds to spatial frequency of 0.326 Å⁻¹

8.2 Resolution estimates [i](#)

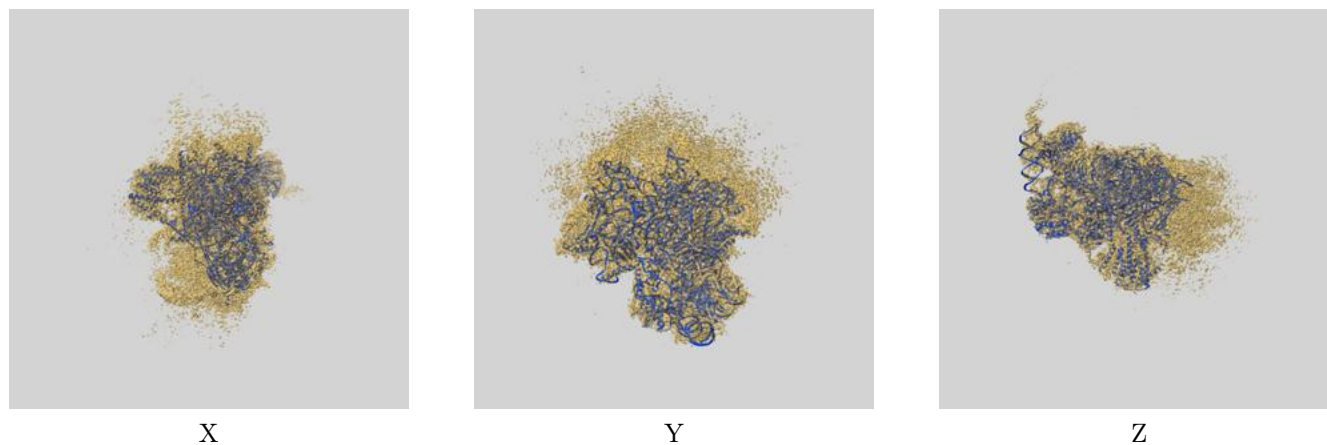
Resolution estimate (Å)	Estimation criterion (FSC cut-off)		
	0.143	0.5	Half-bit
Reported by author	3.07	-	-
Author-provided FSC curve	3.06	3.34	3.08
Unmasked-calculated*	3.35	4.24	3.43

*Resolution estimate based on FSC curve calculated by comparison of deposited half-maps.

9 Map-model fit [i](#)

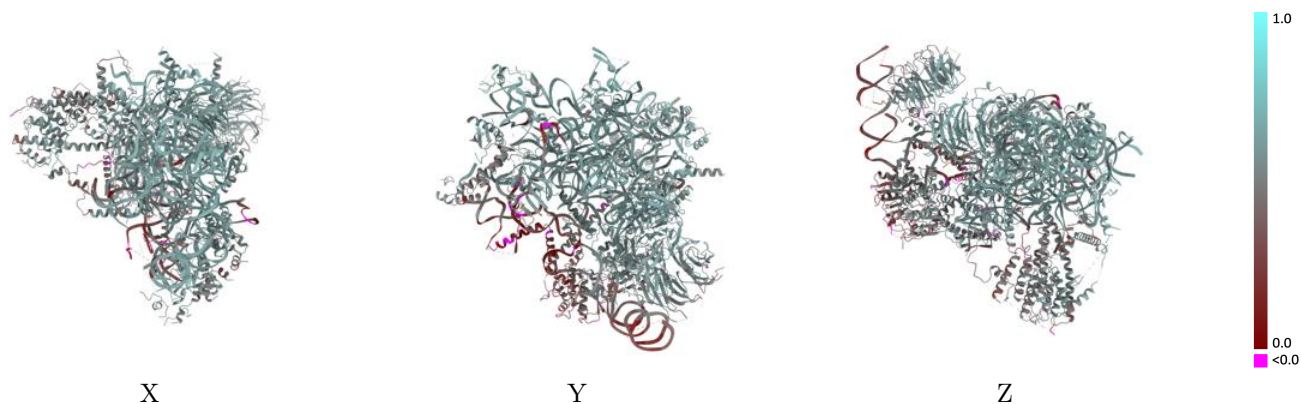
This section contains information regarding the fit between EMDB map EMD-24290 and PDB model 7R72. Per-residue inclusion information can be found in section 3 on page 8.

9.1 Map-model overlay [i](#)



The images above show the 3D surface view of the map at the recommended contour level 0.012 at 50% transparency in yellow overlaid with a ribbon representation of the model coloured in blue. These images allow for the visual assessment of the quality of fit between the atomic model and the map.

9.2 Q-score mapped to coordinate model [i](#)



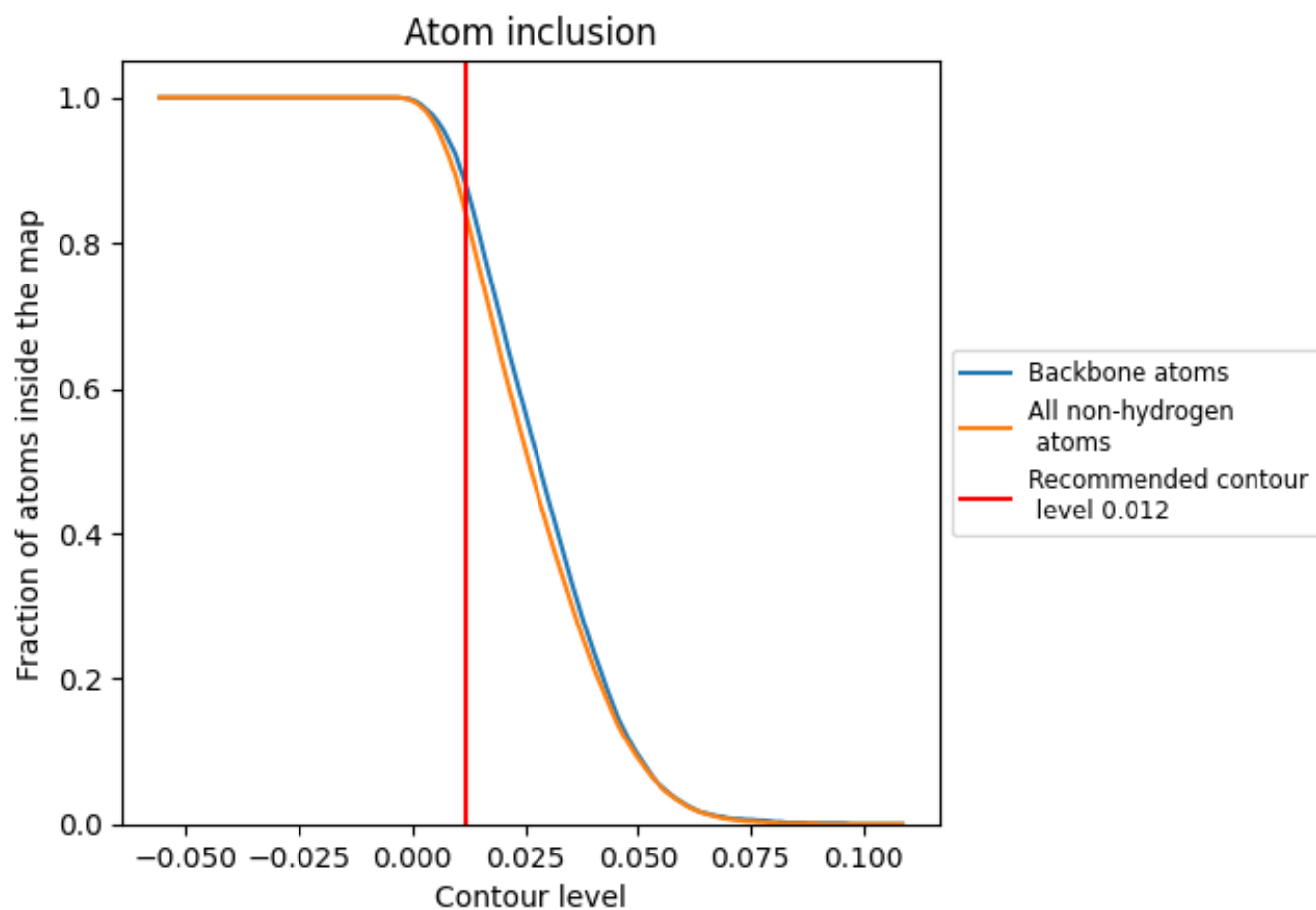
The images above show the model with each residue coloured according to its Q-score. This shows their resolvability in the map with higher Q-score values reflecting better resolvability. Please note: Q-score is calculating the resolvability of atoms, and thus high values are only expected at resolutions at which atoms can be resolved. Low Q-score values may therefore be expected for many entries.

9.3 Atom inclusion mapped to coordinate model [i](#)



The images above show the model with each residue coloured according to its atom inclusion. This shows to what extent they are inside the map at the recommended contour level (0.012).

























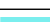



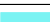





















9.4 Atom inclusion [i](#)



At the recommended contour level, 88% of all backbone atoms, 84% of all non-hydrogen atoms, are inside the map.

9.5 Map-model fit summary

The table lists the average atom inclusion at the recommended contour level (0.012) and Q-score for the entire model and for each chain.

Chain	Atom inclusion	Q-score
All	 0.8400	 0.5190
1	 0.8820	 0.5180
2	 0.9450	 0.5870
8	 0.8310	 0.5190
B	 0.8890	 0.4960
G	 0.9220	 0.5630
I	 0.7920	 0.4860
P	 0.8060	 0.5180
R	 0.8630	 0.5490
U	 0.8750	 0.5370
X	 0.9440	 0.5930
Z	 0.9460	 0.6070
b	 0.7740	 0.4770
c	 0.9370	 0.5790
d	 0.8460	 0.5550
g	 0.9540	 0.6010
j	 0.9120	 0.6040
k	 0.9010	 0.5760
m	 0.9490	 0.5980
n	 0.9470	 0.5950
p	 0.7910	 0.5200
t	 0.9090	 0.5980
u	 0.7830	 0.4630
w	 0.6350	 0.4580
x	 0.6010	 0.3860

