



Full wwPDB X-ray Structure Validation Report ⓘ

Jun 15, 2020 – 11:05 pm BST

PDB ID : 3RAA
Title : Structural studies of AAV8 capsid transitions associated with endosomal trafficking
Authors : Nam, H.-J.; Gurda, B.; McKenna, R.; Porter, M.; Byrne, B.; Salganik, M.; Muzyczka, N.; Agbandje-McKenna, M.
Deposited on : 2011-03-27
Resolution : 3.20 Å(reported)

This is a Full wwPDB X-ray Structure Validation Report for a publicly released PDB entry.

We welcome your comments at validation@mail.wwpdb.org

A user guide is available at

<https://www.wwpdb.org/validation/2017/XrayValidationReportHelp>

with specific help available everywhere you see the ⓘ symbol.

The following versions of software and data (see [references ⓘ](#)) were used in the production of this report:

MolProbity : 4.02b-467
Xtriage (Phenix) : 1.13
EDS : 2.11
Percentile statistics : 20191225.v01 (using entries in the PDB archive December 25th 2019)
Refmac : 5.8.0158
CCP4 : 7.0.044 (Gargrove)
Ideal geometry (proteins) : Engh & Huber (2001)
Ideal geometry (DNA, RNA) : Parkinson et al. (1996)
Validation Pipeline (wwPDB-VP) : 2.11

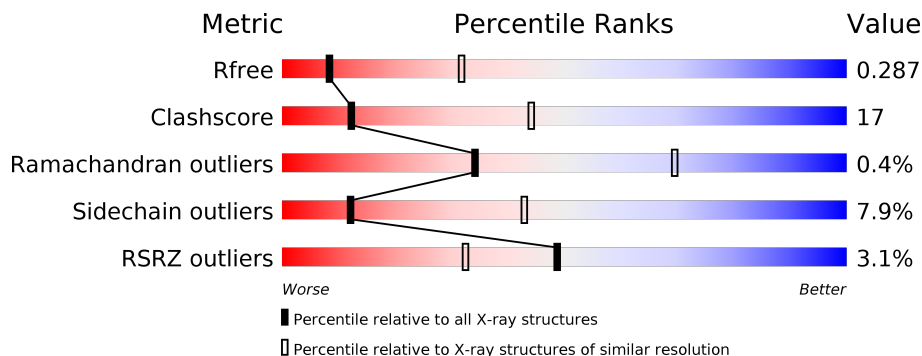
1 Overall quality at a glance

The following experimental techniques were used to determine the structure:

X-RAY DIFFRACTION

The reported resolution of this entry is 3.20 Å.

Percentile scores (ranging between 0-100) for global validation metrics of the entry are shown in the following graphic. The table shows the number of entries on which the scores are based.



Metric	Whole archive (#Entries)	Similar resolution (#Entries, resolution range(Å))
R_{free}	130704	1133 (3.20-3.20)
Clashscore	141614	1253 (3.20-3.20)
Ramachandran outliers	138981	1234 (3.20-3.20)
Sidechain outliers	138945	1233 (3.20-3.20)
RSRZ outliers	127900	1095 (3.20-3.20)

The table below summarises the geometric issues observed across the polymeric chains and their fit to the electron density. The red, orange, yellow and green segments on the lower bar indicate the fraction of residues that contain outliers for ≥ 3 , 2, 1 and 0 types of geometric quality criteria respectively. A grey segment represents the fraction of residues that are not modelled. The numeric value for each fraction is indicated below the corresponding segment, with a dot representing fractions $\leq 5\%$. The upper red bar (where present) indicates the fraction of residues that have poor fit to the electron density. The numeric value is given above the bar.

Mol	Chain	Length	Quality of chain
1	A	519	

2 Entry composition [i](#)

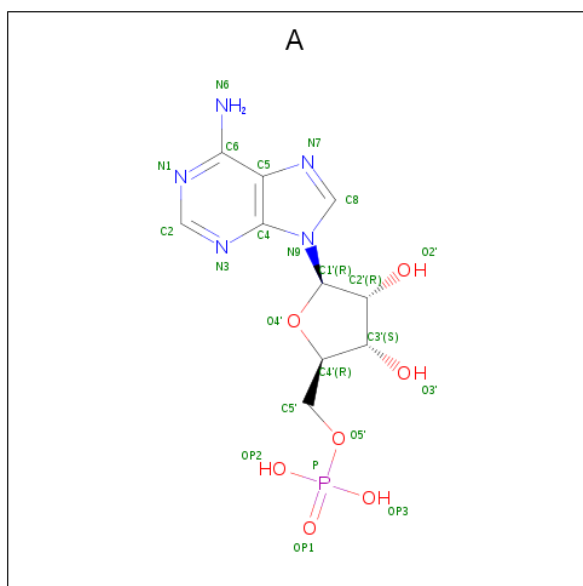
There are 2 unique types of molecules in this entry. The entry contains 4154 atoms, of which 0 are hydrogens and 0 are deuteriums.

In the tables below, the ZeroOcc column contains the number of atoms modelled with zero occupancy, the AltConf column contains the number of residues with at least one atom in alternate conformation and the Trace column contains the number of residues modelled with at most 2 atoms.

- Molecule 1 is a protein called Capsid protein.

Mol	Chain	Residues	Atoms					ZeroOcc	AltConf	Trace
			Total	C	N	O	S			
1	A	519	4136	2609	716	798	13	0	0	0

- Molecule 2 is ADENOSINE-5'-MONOPHOSPHATE (three-letter code: A) (formula: $C_{10}H_{14}N_5O_7P$).

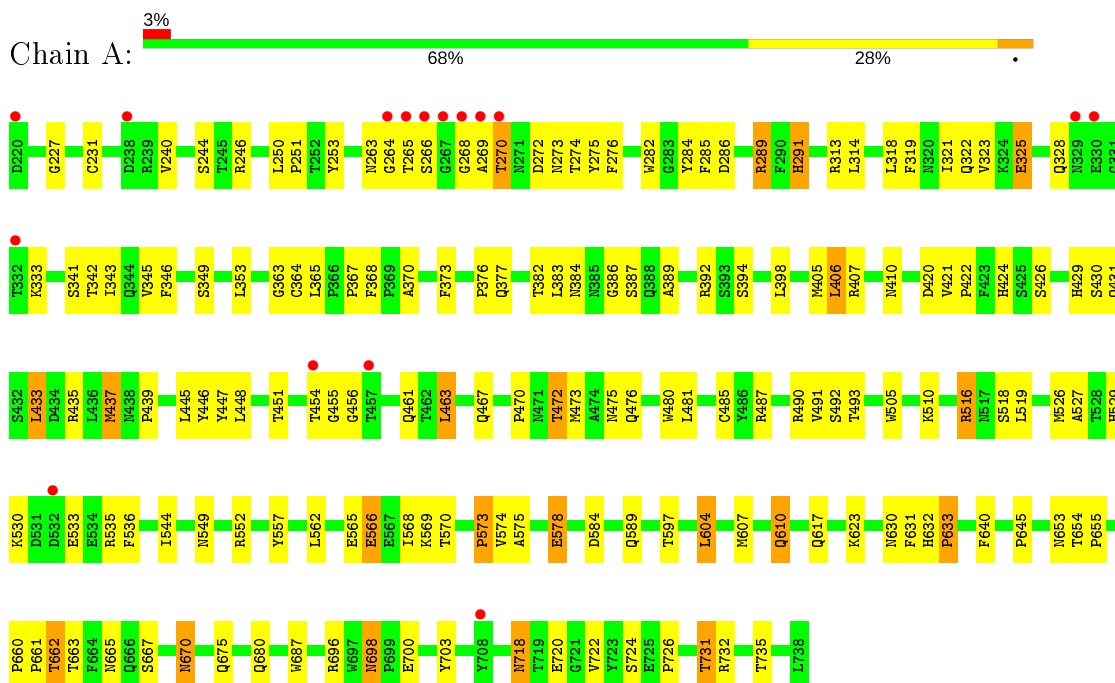


Mol	Chain	Residues	Atoms				ZeroOcc	AltConf
			Total	C	N	O		
2	A	1	18	10	5	3	0	0

3 Residue-property plots [i](#)

These plots are drawn for all protein, RNA and DNA chains in the entry. The first graphic for a chain summarises the proportions of the various outlier classes displayed in the second graphic. The second graphic shows the sequence view annotated by issues in geometry and electron density. Residues are color-coded according to the number of geometric quality criteria for which they contain at least one outlier: green = 0, yellow = 1, orange = 2 and red = 3 or more. A red dot above a residue indicates a poor fit to the electron density ($RSRZ > 2$). Stretches of 2 or more consecutive residues without any outlier are shown as a green connector. Residues present in the sample, but not in the model, are shown in grey.

- Molecule 1: Capsid protein



4 Data and refinement statistics

Property	Value	Source
Space group	P 63 2 2	Depositor
Cell constants a, b, c, α , β , γ	256.40Å 256.40Å 447.43Å 90.00° 90.00° 120.00°	Depositor
Resolution (Å)	34.84 – 3.20 34.84 – 3.20	Depositor EDS
% Data completeness (in resolution range)	89.0 (34.84-3.20) 89.0 (34.84-3.20)	Depositor EDS
R_{merge}	(Not available)	Depositor
R_{sym}	(Not available)	Depositor
$\langle I/\sigma(I) \rangle$ ¹	2.17 (at 3.18Å)	Xtrriage
Refinement program	CNS	Depositor
R, R_{free}	0.294 , 0.297 0.286 , 0.287	Depositor DCC
R_{free} test set	6363 reflections (5.03%)	wwPDB-VP
Wilson B-factor (Å ²)	43.2	Xtrriage
Anisotropy	0.628	Xtrriage
Bulk solvent k_{sol} (e/Å ³), B_{sol} (Å ²)	0.30 , 10.3	EDS
L-test for twinning ²	$\langle L \rangle = 0.51$, $\langle L^2 \rangle = 0.34$	Xtrriage
Estimated twinning fraction	No twinning to report.	Xtrriage
F_o, F_c correlation	0.81	EDS
Total number of atoms	4154	wwPDB-VP
Average B, all atoms (Å ²)	44.0	wwPDB-VP

Xtrriage's analysis on translational NCS is as follows: *The largest off-origin peak in the Patterson function is 1.38% of the height of the origin peak. No significant pseudotranslation is detected.*

¹ Intensities estimated from amplitudes.

² Theoretical values of $\langle |L| \rangle$, $\langle L^2 \rangle$ for acentric reflections are 0.5, 0.333 respectively for untwinned datasets, and 0.375, 0.2 for perfectly twinned datasets.

5 Model quality i

5.1 Standard geometry i

The Z score for a bond length (or angle) is the number of standard deviations the observed value is removed from the expected value. A bond length (or angle) with $|Z| > 5$ is considered an outlier worth inspection. RMSZ is the root-mean-square of all Z scores of the bond lengths (or angles).

Mol	Chain	Bond lengths		Bond angles	
		RMSZ	# Z >5	RMSZ	# Z >5
1	A	0.48	0/4259	0.73	1/5811 (0.0%)

There are no bond length outliers.

All (1) bond angle outliers are listed below:

Mol	Chain	Res	Type	Atoms	Z	Observed(°)	Ideal(°)
1	A	573	PRO	CA-N-CD	-5.11	104.35	111.50

There are no chirality outliers.

There are no planarity outliers.

5.2 Too-close contacts i

In the following table, the Non-H and H(model) columns list the number of non-hydrogen atoms and hydrogen atoms in the chain respectively. The H(added) column lists the number of hydrogen atoms added and optimized by MolProbity. The Clashes column lists the number of clashes within the asymmetric unit, whereas Symm-Clashes lists symmetry related clashes.

Mol	Chain	Non-H	H(model)	H(added)	Clashes	Symm-Clashes
1	A	4136	0	3893	137	0
2	A	18	0	13	0	0
All	All	4154	0	3906	137	0

The all-atom clashscore is defined as the number of clashes found per 1000 atoms (including hydrogen atoms). The all-atom clashscore for this structure is 17.

All (137) close contacts within the same asymmetric unit are listed below, sorted by their clash magnitude.

Atom-1	Atom-2	Interatomic distance (Å)	Clash overlap (Å)
1:A:382:THR:HG21	1:A:394:SER:H	1.23	1.01

Continued on next page...

Continued from previous page...

Atom-1	Atom-2	Interatomic distance (Å)	Clash overlap (Å)
1:A:698:ASN:H	1:A:698:ASN:HD22	1.01	0.99
1:A:566:GLU:O	1:A:569:LYS:HG3	1.66	0.96
1:A:632:HIS:N	1:A:633:PRO:HD3	1.82	0.93
1:A:632:HIS:N	1:A:633:PRO:CD	2.36	0.88
1:A:529:HIS:CD2	1:A:533:GLU:O	2.30	0.83
1:A:718:ASN:HB3	1:A:720:GLU:H	1.41	0.83
1:A:429:HIS:HB2	1:A:570:THR:HG21	1.60	0.82
1:A:264:GLY:HA3	1:A:387:SER:HB3	1.59	0.82
1:A:698:ASN:ND2	1:A:698:ASN:H	1.78	0.81
1:A:529:HIS:CG	1:A:533:GLU:O	2.33	0.81
1:A:718:ASN:HB2	1:A:722:VAL:H	1.46	0.81
1:A:264:GLY:CA	1:A:387:SER:HB3	2.13	0.78
1:A:665:ASN:HD21	1:A:667:SER:HB2	1.48	0.76
1:A:698:ASN:HD22	1:A:698:ASN:N	1.83	0.75
1:A:424:HIS:CD2	1:A:731:THR:HG21	2.22	0.75
1:A:670:ASN:HD22	1:A:670:ASN:H	1.35	0.73
1:A:426:SER:HA	1:A:731:THR:HG23	1.72	0.72
1:A:321:ILE:HD13	1:A:343:ILE:HD11	1.73	0.71
1:A:270:THR:HG23	1:A:273:ASN:HD22	1.60	0.66
1:A:363:GLY:HA3	1:A:376:PRO:HG3	1.77	0.66
1:A:328:GLN:HE22	1:A:333:LYS:HB2	1.60	0.65
1:A:426:SER:HA	1:A:731:THR:CG2	2.27	0.65
1:A:631:PHE:C	1:A:633:PRO:HD3	2.16	0.65
1:A:424:HIS:NE2	1:A:731:THR:HG21	2.12	0.65
1:A:604:LEU:O	1:A:607:MET:HG3	1.97	0.64
1:A:610:GLN:CA	1:A:610:GLN:HE21	2.08	0.64
1:A:731:THR:HG22	1:A:732:ARG:HG3	1.80	0.64
1:A:406:LEU:N	1:A:406:LEU:HD23	2.14	0.63
1:A:510:LYS:HB3	1:A:518:SER:O	2.00	0.62
1:A:435:ARG:HD2	1:A:473:MET:HE1	1.81	0.61
1:A:724:SER:O	1:A:726:PRO:HD3	2.01	0.60
1:A:291:HIS:CE1	1:A:367:PRO:HG3	2.36	0.60
1:A:610:GLN:HE21	1:A:610:GLN:HA	1.67	0.59
1:A:439:PRO:O	1:A:470:PRO:HB3	2.03	0.59
1:A:314:LEU:HD12	1:A:314:LEU:C	2.23	0.59
1:A:610:GLN:NE2	1:A:610:GLN:HA	2.17	0.59
1:A:662:THR:HG22	1:A:663:THR:HG23	1.86	0.57
1:A:382:THR:HG22	1:A:383:LEU:H	1.70	0.56
1:A:383:LEU:HD12	1:A:392:ARG:HB2	1.85	0.56
1:A:670:ASN:HD22	1:A:670:ASN:N	2.00	0.56
1:A:630:ASN:OD1	1:A:633:PRO:HG3	2.05	0.56

Continued on next page...

Continued from previous page...

Atom-1	Atom-2	Interatomic distance (Å)	Clash overlap (Å)
1:A:492:SER:HB2	1:A:536:PHE:CE2	2.41	0.55
1:A:365:LEU:HD22	1:A:373:PHE:CZ	2.41	0.55
1:A:490:ARG:HD2	1:A:536:PHE:CG	2.41	0.55
1:A:505:TRP:CE2	1:A:510:LYS:HE2	2.42	0.55
1:A:670:ASN:ND2	1:A:670:ASN:H	2.05	0.55
1:A:285:PHE:CZ	1:A:318:LEU:HD21	2.42	0.55
1:A:665:ASN:ND2	1:A:667:SER:HB2	2.21	0.54
1:A:289:ARG:HD2	1:A:364:CYS:SG	2.48	0.53
1:A:700:GLU:OE1	1:A:735:THR:HG23	2.09	0.53
1:A:272:ASP:HA	1:A:516:ARG:HB2	1.91	0.53
1:A:276:PHE:CZ	1:A:389:ALA:HB2	2.44	0.53
1:A:527:ALA:HB3	1:A:574:VAL:HA	1.91	0.52
1:A:328:GLN:OE1	1:A:328:GLN:HA	2.10	0.52
1:A:268:GLY:O	1:A:269:ALA:C	2.46	0.52
1:A:321:ILE:HD13	1:A:343:ILE:CD1	2.40	0.51
1:A:610:GLN:NE2	1:A:610:GLN:CA	2.73	0.51
1:A:328:GLN:NE2	1:A:333:LYS:HB2	2.24	0.51
1:A:472:THR:HG22	1:A:475:ASN:HD22	1.76	0.51
1:A:342:THR:HG22	1:A:407:ARG:HG2	1.94	0.50
1:A:535:ARG:HG2	1:A:535:ARG:HH11	1.76	0.50
1:A:353:LEU:HD11	1:A:398:LEU:HD22	1.92	0.50
1:A:433:LEU:HD21	1:A:480:TRP:HB2	1.93	0.50
1:A:529:HIS:HD2	1:A:530:LYS:O	1.95	0.50
1:A:526:MET:HB2	1:A:575:ALA:HB2	1.93	0.49
1:A:231:CYS:HA	1:A:244:SER:HA	1.95	0.49
1:A:264:GLY:N	1:A:387:SER:HB3	2.27	0.49
1:A:703:TYR:CD2	1:A:703:TYR:C	2.86	0.48
1:A:368:PHE:CE2	1:A:370:ALA:HB3	2.48	0.48
1:A:405:MET:C	1:A:406:LEU:HD23	2.33	0.48
1:A:544:ILE:HG12	1:A:562:LEU:HD22	1.94	0.48
1:A:718:ASN:HB3	1:A:720:GLU:N	2.20	0.48
1:A:246:ARG:HG3	1:A:365:LEU:HB3	1.96	0.47
1:A:670:ASN:ND2	1:A:670:ASN:N	2.63	0.47
1:A:446:TYR:CE2	1:A:467:GLN:HG3	2.50	0.47
1:A:244:SER:HB2	1:A:246:ARG:HH12	1.78	0.47
1:A:623:LYS:HB2	1:A:645:PRO:HG3	1.96	0.47
1:A:286:ASP:O	1:A:364:CYS:HA	2.15	0.47
1:A:382:THR:HG21	1:A:394:SER:N	2.08	0.47
1:A:437:MET:HG2	1:A:476:GLN:OE1	2.14	0.47
1:A:535:ARG:HG2	1:A:535:ARG:NH1	2.30	0.47
1:A:435:ARG:HD2	1:A:473:MET:CE	2.45	0.46

Continued on next page...

Continued from previous page...

Atom-1	Atom-2	Interatomic distance (Å)	Clash overlap (Å)
1:A:227:GLY:HA3	1:A:319:PHE:CD1	2.50	0.46
1:A:426:SER:CA	1:A:731:THR:HG23	2.42	0.46
1:A:426:SER:CB	1:A:731:THR:HG23	2.45	0.46
1:A:282:TRP:CG	1:A:398:LEU:HD12	2.51	0.46
1:A:492:SER:HB2	1:A:536:PHE:HE2	1.78	0.46
1:A:325:GLU:HA	1:A:675:GLN:HB3	1.97	0.46
1:A:314:LEU:O	1:A:314:LEU:HD12	2.15	0.46
1:A:454:THR:O	1:A:456:GLY:N	2.49	0.46
1:A:275:TYR:C	1:A:275:TYR:CD1	2.88	0.46
1:A:345:VAL:HG12	1:A:346:PHE:N	2.31	0.46
1:A:578:GLU:HB3	1:A:597:THR:HG23	1.98	0.46
1:A:451:THR:O	1:A:451:THR:HG22	2.16	0.45
1:A:529:HIS:CB	1:A:533:GLU:O	2.63	0.45
1:A:447:TYR:OH	1:A:472:THR:HG21	2.17	0.45
1:A:321:ILE:HD12	1:A:406:LEU:HD12	1.98	0.45
1:A:319:PHE:CD2	1:A:319:PHE:N	2.85	0.45
1:A:274:THR:HB	1:A:386:GLY:O	2.17	0.44
1:A:353:LEU:CD1	1:A:398:LEU:HD22	2.47	0.44
1:A:654:THR:HA	1:A:655:PRO:HD3	1.86	0.44
1:A:696:ARG:HD3	1:A:700:GLU:HG2	2.00	0.44
1:A:328:GLN:OE1	1:A:333:LYS:HB2	2.17	0.44
1:A:250:LEU:HD23	1:A:653:ASN:ND2	2.33	0.44
1:A:263:ASN:HD21	1:A:269:ALA:HB2	1.83	0.44
1:A:244:SER:HB2	1:A:246:ARG:NH1	2.33	0.44
1:A:284:TYR:CE2	1:A:376:PRO:HB2	2.54	0.43
1:A:421:VAL:HG21	1:A:640:PHE:HB3	1.98	0.43
1:A:406:LEU:HB3	1:A:410:ASN:HB3	2.01	0.43
1:A:291:HIS:NE2	1:A:367:PRO:HG3	2.34	0.43
1:A:632:HIS:N	1:A:633:PRO:HD2	2.27	0.43
1:A:718:ASN:HB2	1:A:722:VAL:N	2.22	0.43
1:A:289:ARG:NH1	1:A:617:GLN:O	2.51	0.43
1:A:253:TYR:CE1	1:A:377:GLN:HB2	2.54	0.42
1:A:435:ARG:NE	1:A:473:MET:HE3	2.35	0.42
1:A:630:ASN:CG	1:A:633:PRO:HG3	2.40	0.42
1:A:313:ARG:NH1	1:A:313:ARG:HB3	2.34	0.42
1:A:431:GLN:O	1:A:570:THR:OG1	2.37	0.42
1:A:421:VAL:HG22	1:A:422:PRO:HD2	2.02	0.41
1:A:463:LEU:HA	1:A:463:LEU:HD12	1.84	0.41
1:A:240:VAL:CG1	1:A:687:TRP:HB2	2.51	0.41
1:A:461:GLN:CD	1:A:461:GLN:H	2.23	0.41
1:A:700:GLU:OE1	1:A:735:THR:N	2.53	0.41

Continued on next page...

Continued from previous page...

Atom-1	Atom-2	Interatomic distance (Å)	Clash overlap (Å)
1:A:231:CYS:SG	1:A:244:SER:HA	2.61	0.41
1:A:660:PRO:HB2	1:A:661:PRO:HD2	2.02	0.41
1:A:430:SER:HB3	1:A:735:THR:HB	2.03	0.41
1:A:529:HIS:HB2	1:A:533:GLU:O	2.20	0.41
1:A:289:ARG:CG	1:A:289:ARG:HH11	2.34	0.41
1:A:250:LEU:HD12	1:A:251:PRO:HD2	2.01	0.40
1:A:487:ARG:HH11	1:A:487:ARG:HD2	1.78	0.40
1:A:565:GLU:O	1:A:568:ILE:HG12	2.22	0.40
1:A:276:PHE:CB	1:A:384:ASN:HB3	2.51	0.40
1:A:557:TYR:C	1:A:557:TYR:CD2	2.94	0.40
1:A:323:VAL:HG11	1:A:341:SER:HB2	2.03	0.40
1:A:493:THR:HG22	1:A:557:TYR:CE1	2.56	0.40
1:A:718:ASN:HA	1:A:718:ASN:HD22	1.52	0.40

There are no symmetry-related clashes.

5.3 Torsion angles [i](#)

5.3.1 Protein backbone [i](#)

In the following table, the Percentiles column shows the percent Ramachandran outliers of the chain as a percentile score with respect to all X-ray entries followed by that with respect to entries of similar resolution.

The Analysed column shows the number of residues for which the backbone conformation was analysed, and the total number of residues.

Mol	Chain	Analysed	Favoured	Allowed	Outliers	Percentiles
1	A	517/519 (100%)	491 (95%)	24 (5%)	2 (0%)	34 69

All (2) Ramachandran outliers are listed below:

Mol	Chain	Res	Type
1	A	455	GLY
1	A	633	PRO

5.3.2 Protein sidechains [i](#)

In the following table, the Percentiles column shows the percent sidechain outliers of the chain as a percentile score with respect to all X-ray entries followed by that with respect to entries of similar

resolution.

The Analysed column shows the number of residues for which the sidechain conformation was analysed, and the total number of residues.

Mol	Chain	Analysed	Rotameric	Outliers	Percentiles
1	A	453/453 (100%)	417 (92%)	36 (8%)	12 43

All (36) residues with a non-rotameric sidechain are listed below:

Mol	Chain	Res	Type
1	A	265	THR
1	A	266	SER
1	A	270	THR
1	A	289	ARG
1	A	291	HIS
1	A	322	GLN
1	A	325	GLU
1	A	349	SER
1	A	406	LEU
1	A	420	ASP
1	A	433	LEU
1	A	437	MET
1	A	445	LEU
1	A	448	LEU
1	A	463	LEU
1	A	472	THR
1	A	481	LEU
1	A	485	CYS
1	A	491	VAL
1	A	516	ARG
1	A	519	LEU
1	A	549	ASN
1	A	552	ARG
1	A	566	GLU
1	A	573	PRO
1	A	578	GLU
1	A	584	ASP
1	A	589	GLN
1	A	604	LEU
1	A	610	GLN
1	A	662	THR
1	A	670	ASN
1	A	680	GLN
1	A	698	ASN

Continued on next page...

Continued from previous page...

Mol	Chain	Res	Type
1	A	718	ASN
1	A	731	THR

Some sidechains can be flipped to improve hydrogen bonding and reduce clashes. All (21) such sidechains are listed below:

Mol	Chain	Res	Type
1	A	256	HIS
1	A	260	GLN
1	A	263	ASN
1	A	273	ASN
1	A	322	GLN
1	A	410	ASN
1	A	429	HIS
1	A	467	GLN
1	A	475	ASN
1	A	499	ASN
1	A	529	HIS
1	A	549	ASN
1	A	610	GLN
1	A	611	ASN
1	A	653	ASN
1	A	665	ASN
1	A	666	GLN
1	A	670	ASN
1	A	698	ASN
1	A	718	ASN
1	A	737	ASN

5.3.3 RNA [i](#)

There are no RNA molecules in this entry.

5.4 Non-standard residues in protein, DNA, RNA chains [i](#)

There are no non-standard protein/DNA/RNA residues in this entry.

5.5 Carbohydrates [i](#)

There are no carbohydrates in this entry.

5.6 Ligand geometry

1 ligand is modelled in this entry.

There are no bond length outliers.

There are no bond angle outliers.

There are no chirality outliers.

There are no torsion outliers.

There are no ring outliers.

No monomer is involved in short contacts.

5.7 Other polymers

There are no such residues in this entry.

5.8 Polymer linkage issues

There are no chain breaks in this entry.

6 Fit of model and data [i](#)

6.1 Protein, DNA and RNA chains [i](#)

In the following table, the column labelled '#RSRZ > 2' contains the number (and percentage) of RSRZ outliers, followed by percent RSRZ outliers for the chain as percentile scores relative to all X-ray entries and entries of similar resolution. The OWAB column contains the minimum, median, 95th percentile and maximum values of the occupancy-weighted average B-factor per residue. The column labelled 'Q < 0.9' lists the number of (and percentage) of residues with an average occupancy less than 0.9.

Mol	Chain	Analysed	<RSRZ>	#RSRZ>2	OWAB(Å ²)	Q<0.9
1	A	519/519 (100%)	0.17	16 (3%) 49 32	28, 42, 67, 96	0

All (16) RSRZ outliers are listed below:

Mol	Chain	Res	Type	RSRZ
1	A	267	GLY	3.7
1	A	268	GLY	3.6
1	A	332	THR	3.5
1	A	269	ALA	3.5
1	A	330	GLU	3.4
1	A	266	SER	3.4
1	A	238	ASP	3.3
1	A	457	THR	3.2
1	A	329	ASN	2.8
1	A	270	THR	2.8
1	A	265	THR	2.6
1	A	220	ASP	2.5
1	A	264	GLY	2.4
1	A	532	ASP	2.2
1	A	708	TYR	2.2
1	A	454	THR	2.0

6.2 Non-standard residues in protein, DNA, RNA chains [i](#)

There are no non-standard protein/DNA/RNA residues in this entry.

6.3 Carbohydrates [i](#)

There are no carbohydrates in this entry.

6.4 Ligands [i](#)

In the following table, the Atoms column lists the number of modelled atoms in the group and the number defined in the chemical component dictionary. The B-factors column lists the minimum, median, 95th percentile and maximum values of B factors of atoms in the group. The column labelled 'Q< 0.9' lists the number of atoms with occupancy less than 0.9.

Mol	Type	Chain	Res	Atoms	RSCC	RSR	B-factors(Å ²)	Q<0.9
2	A	A	2	18/23	0.82	0.30	32,36,42,43	18

6.5 Other polymers [i](#)

There are no such residues in this entry.