



# wwPDB NMR Structure Validation Summary Report ⓘ

Jun 6, 2020 – 06:12 am BST

PDB ID : 6RIO  
Title : Imidazole Polyamide-DNA complex NMR structure (5'-CGATGTACATCG-3')  
Authors : Padroni, G.; Withers, J.M.; Taladriz-Sender, A.; Reichenbach, L.F.; Parkinson, J.A.; Burley, G.A.  
Deposited on : 2019-04-24

This is a wwPDB NMR Structure Validation Summary Report for a publicly released PDB entry.

We welcome your comments at [validation@mail.wwpdb.org](mailto:validation@mail.wwpdb.org)

A user guide is available at

<https://www.wwpdb.org/validation/2017/NMRValidationReportHelp>

with specific help available everywhere you see the ⓘ symbol.

---

The following versions of software and data (see [references ⓘ](#)) were used in the production of this report:

Cyrange : Kirchner and Güntert (2011)  
NmrClust : Kelley et al. (1996)  
MolProbity : 4.02b-467  
Mogul : 1.8.5 (274361), CSD as541be (2020)  
buster-report : 1.1.7 (2018)  
Percentile statistics : 20191225.v01 (using entries in the PDB archive December 25th 2019)  
RCI : v\_1n\_11\_5\_13\_A (Berjanski et al., 2005)  
PANAV : Wang et al. (2010)  
ShiftChecker : 2.11  
Ideal geometry (proteins) : Engh & Huber (2001)  
Ideal geometry (DNA, RNA) : Parkinson et al. (1996)  
Validation Pipeline (wwPDB-VP) : 2.11



## 2 Ensemble composition and analysis

This entry contains 10 models. This entry does not contain polypeptide chains, therefore identification of well-defined residues and clustering analysis are not possible. All residues are included in the validation scores.

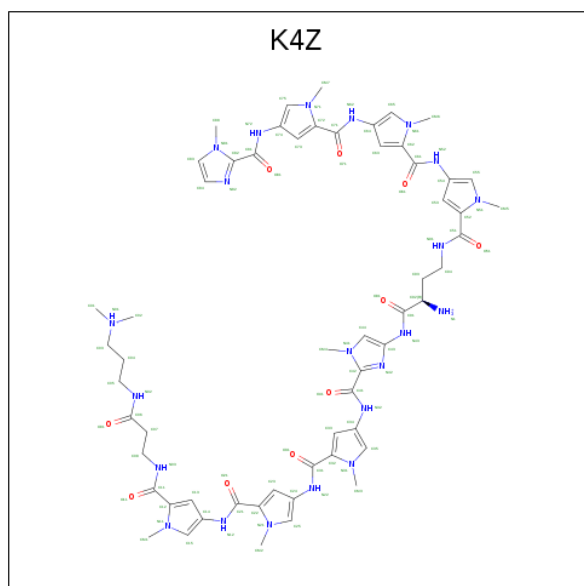
### 3 Entry composition [i](#)

There are 2 unique types of molecules in this entry. The entry contains 924 atoms, of which 348 are hydrogens and 0 are deuteriums.

- Molecule 1 is a DNA chain called DNA (5'-\*(DC5)P\*GP\*AP\*TP\*GP\*TP\*AP\*CP\*AP\*TP\*CP\*(DG3))-3').

Mol	Chain	Residues	Atoms					Trace	
			Total	C	H	N	O		P
1	A	12	Total	C	H	N	O	P	0
			380	117	137	45	70	11	
1	B	12	Total	C	H	N	O	P	0
			380	117	137	45	70	11	

- Molecule 2 is 3-[3-[4-[4-[4-[4-[(2 {R})-2-azaniumyl-4-[[1-methyl-4-[[1-methyl-4-[[1-methyl-4-[(1-methylimidazol-2-yl)carbonylamino]pyrrol-2-yl]carbonylamino]pyrrol-2-yl]carbonylamino]pyrrol-2-yl]carbonylamino]butanoyl]amino]-1-methyl-imidazol-2-yl]carbonylamino]-1-methyl-pyrrol-2-yl]carbonylamino]-1-methyl-pyrrol-2-yl]carbonylamino]-1-methyl-pyrrol-2-yl]carbonylamino]propanoylamino]propyl-dimethyl-azanium (three-letter code: K4Z) (formula: C<sub>58</sub>H<sub>74</sub>N<sub>22</sub>O<sub>10</sub>) (labeled as "Ligand of Interest" by author).




Mol	Chain	Residues	Atoms				
			Total	C	H	N	O
2	A	1	Total	C	H	N	O
			164	58	74	22	10

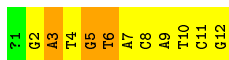
## 4 Residue-property plots

### 4.1 Average score per residue in the NMR ensemble

These plots are provided for all protein, RNA and DNA chains in the entry. The first graphic is the same as shown in the summary in section 1 of this report. The second graphic shows the sequence where residues are colour-coded according to the number of geometric quality criteria for which they contain at least one outlier: green = 0, yellow = 1, orange = 2 and red = 3 or more. Stretches of 2 or more consecutive residues without any outliers are shown as green connectors. Residues which are classified as ill-defined in the NMR ensemble, are shown in cyan with an underline colour-coded according to the previous scheme. Residues which were present in the experimental sample, but not modelled in the final structure are shown in grey.

- Molecule 1: DNA (5'-(\*(DC5)P\*GP\*AP\*TP\*GP\*TP\*AP\*CP\*AP\*TP\*CP\*(DG3))-3')

Chain A: 



- Molecule 1: DNA (5'-(\*(DC5)P\*GP\*AP\*TP\*GP\*TP\*AP\*CP\*AP\*TP\*CP\*(DG3))-3')

Chain B: 

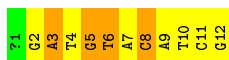


### 4.2 Residue scores for the representative (author defined) model from the NMR ensemble


The representative model is number 1. Colouring as in section 4.1 above.

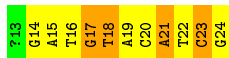
- Molecule 1: DNA (5'-(\*(DC5)P\*GP\*AP\*TP\*GP\*TP\*AP\*CP\*AP\*TP\*CP\*(DG3))-3')

Chain A: 



- Molecule 1: DNA (5'-(\*(DC5)P\*GP\*AP\*TP\*GP\*TP\*AP\*CP\*AP\*TP\*CP\*(DG3))-3')

Chain B: 



## 5 Refinement protocol and experimental data overview (i)

The models were refined using the following method: *molecular dynamics, matrix relaxation*.

Of the 2000 calculated structures, 10 were deposited, based on the following criterion: *structures with the least restraint violations*.

The following table shows the software used for structure solution, optimisation and refinement.

Software name	Classification	Version
Amber	refinement	
Amber	structure calculation	
MARDIGRAS	structure calculation	

The following table shows chemical shift validation statistics as aggregates over all chemical shift files. Detailed validation can be found in section 6 of this report.

Chemical shift file(s)	input_cs.cif
Number of chemical shift lists	1
Total number of shifts	255
Number of shifts mapped to atoms	254
Number of unparsed shifts	0
Number of shifts with mapping errors	0
Number of shifts with mapping warnings	1
Assignment completeness (well-defined parts)	41%

No validations of the models with respect to experimental NMR restraints is performed at this time.

COVALENT-GEOMETRY INFOmissingINFO

### 5.1 Too-close contacts (i)

In the following table, the Non-H and H(model) columns list the number of non-hydrogen atoms and hydrogen atoms in each chain respectively. The H(added) column lists the number of hydrogen atoms added and optimized by MolProbity. The Clashes column lists the number of clashes averaged over the ensemble.

Mol	Chain	Non-H	H(model)	H(added)	Clashes
1	A	243	137	137	0±0
2	A	90	74	0	0±0
All	All	5760	3480	2740	1

The all-atom clashscore is defined as the number of clashes found per 1000 atoms (including hydrogen atoms). The all-atom clashscore for this structure is 0.

All unique clashes are listed below, sorted by their clash magnitude.

Atom-1	Atom-2	Clash(Å)	Distance(Å)	Models	
				Worst	Total
1:A:8:DC:H1'	2:A:101:K4Z:C63	0.41	2.46	1	1

## 5.2 Torsion angles [i](#)

### 5.2.1 Protein backbone [i](#)

There are no protein molecules in this entry.

### 5.2.2 Protein sidechains [i](#)

There are no protein molecules in this entry.

### 5.2.3 RNA [i](#)

There are no RNA molecules in this entry.

## 5.3 Non-standard residues in protein, DNA, RNA chains [i](#)

2 non-standard protein/DNA/RNA residues are modelled in this entry.

In the following table, the Counts columns list the number of bonds for which Mogul statistics could be retrieved, the number of bonds that are observed in the model and the number of bonds that are defined in the chemical component dictionary. The Link column lists molecule types, if any, to which the group is linked. The Z score for a bond length is the number of standard deviations the observed value is removed from the expected value. A bond length with  $|Z| > 2$  is considered an outlier worth inspection. RMSZ is the average root-mean-square of all Z scores of the bond lengths.

Mol	Type	Chain	Res	Link	Bond lengths		
					Counts	RMSZ	#Z>2
1	DCZ	A	1	1	15,17,17	0.94±0.02	0±0 (0±0%)
1	DCZ	B	13	1	15,17,17	0.96±0.02	0±0 (0±0%)

In the following table, the Counts columns list the number of angles for which Mogul statistics could be retrieved, the number of angles that are observed in the model and the number of angles that are defined in the chemical component dictionary. The Link column lists molecule types, if any, to which the group is linked. The Z score for a bond angle is the number of standard deviations the observed value is removed from the expected value. A bond angle with  $|Z| > 2$  is considered an outlier worth inspection. RMSZ is the average root-mean-square of all Z scores of

the bond angles.

Mol	Type	Chain	Res	Link	Bond angles		
					Counts	RMSZ	#Z>2
1	DCZ	A	1	1	17,24,24	0.87±0.04	0±0 (0±0%)
1	DCZ	B	13	1	17,24,24	0.88±0.05	0±0 (0±0%)

In the following table, the Chirals column lists the number of chiral outliers, the number of chiral centers analysed, the number of these observed in the model and the number defined in the chemical component dictionary. Similar counts are reported in the Torsion and Rings columns. '-' means no outliers of that kind were identified.

Mol	Type	Chain	Res	Link	Chirals	Torsions	Rings
1	DCZ	B	13	1	-	0±0,3,18,18	0±0,2,2,2
1	DCZ	A	1	1	-	0±0,3,18,18	0±0,2,2,2

There are no bond-length outliers.

There are no bond-angle outliers.

There are no chirality outliers.

There are no torsion outliers.

There are no ring outliers.

## 5.4 Carbohydrates [i](#)

There are no carbohydrates in this entry.

LIGAND-GEOMETRY INFOmissingINFO

## 5.5 Other polymers [i](#)

There are no such molecules in this entry.

## 5.6 Polymer linkage issues [i](#)

There are no chain breaks in this entry.



## 6 Chemical shift validation [i](#)

The completeness of assignment taking into account all chemical shift lists is 41% for the well-defined parts and 41% for the entire structure.

### 6.1 Chemical shift list 1

File name: input\_cs.cif

Chemical shift list name: *starch\_output*

#### 6.1.1 Bookkeeping [i](#)

The following table shows the results of parsing the chemical shift list and reports the number of nuclei with statistically unusual chemical shifts.

Total number of shifts	255
Number of shifts mapped to atoms	254
Number of unparsed shifts	0
Number of shifts with mapping errors	0
Number of shifts with mapping warnings	1
Number of shift outliers (ShiftChecker)	7

The following assigned chemical shifts were not mapped to the molecules present in the coordinate file.

- No matching atoms found in structure. The only occurrence is reported below.

Chain	Res	Type	Atom	Shift Data		
				Value	Uncertainty	Ambiguity
A	101	K4Z	H941	2.249	0.002	1

#### 6.1.2 Chemical shift referencing [i](#)

No chemical shift referencing corrections were calculated (not enough data).

#### 6.1.3 Completeness of resonance assignments [i](#)

The following table shows the completeness of the chemical shift assignments for the well-defined regions of the structure. The overall completeness is 41%, i.e. 179 atoms were assigned a chemical shift out of a possible 434. 0 out of 0 assigned methyl groups (LEU and VAL) were assigned stereospecifically.

	<b>Total</b>	<b><sup>1</sup>H</b>	<b><sup>13</sup>C</b>	<b><sup>15</sup>N</b>
Backbone	0/0 (—%)	0/0 (—%)	0/0 (—%)	0/0 (—%)
Sidechain	0/0 (—%)	0/0 (—%)	0/0 (—%)	0/0 (—%)
Aromatic	0/0 (—%)	0/0 (—%)	0/0 (—%)	0/0 (—%)
Overall	179/434 (41%)	179/258 (69%)	0/148 (0%)	0/28 (0%)

#### 6.1.4 Statistically unusual chemical shifts [i](#)

The following table lists the statistically unusual chemical shifts. These are statistical measures, and large deviations from the mean do not necessarily imply incorrect assignments. Molecules containing paramagnetic centres or hemes are expected to give rise to anomalous chemical shifts.

Mol	Chain	Res	Type	Atom	Shift, ppm	Expected range, ppm	Z-score
1	B	18	DT	H4'	2.08	5.65 – 2.55	-6.5
1	A	6	DT	H4'	2.14	5.65 – 2.55	-6.3
1	A	8	DC	H4'	1.95	5.92 – 2.32	-6.0
1	B	19	DA	H4'	2.49	5.86 – 2.76	-5.9
1	A	7	DA	H4'	2.49	5.86 – 2.76	-5.9
1	A	9	DA	H4'	2.55	5.86 – 2.76	-5.7
1	B	20	DC	H4'	2.18	5.92 – 2.32	-5.4

#### 6.1.5 Random Coil Index (RCI) plots [i](#)

No *random coil index* (RCI) plot could be generated from the current chemical shift list (starch\_output). RCI is only applicable to proteins.