



Full wwPDB X-ray Structure Validation Report ⓘ

Sep 1, 2022 – 12:16 PM EDT

PDB ID : 5RM2
Title : PanDDA analysis group deposition – Crystal Structure of SARS-CoV-2 heli-
case in complex with Z1741964527
Authors : Newman, J.A.; Yosaatmadja, Y.; Douangamath, A.; Aimon, A.; Powell, A.J.;
Dias, A.; Fearon, D.; Dunnett, L.; Brandao-Neto, J.; Krojer, T.; Skyner, R.;
Gorrie-Stone, T.; Thompson, W.; von Delft, F.; Arrowsmith, C.H.; Edwards,
A.; Bountra, C.; Gileadi, O.
Deposited on : 2020-09-16
Resolution : 1.82 Å(reported)

This is a Full wwPDB X-ray Structure Validation Report for a publicly released PDB entry.

We welcome your comments at validation@mail.wwpdb.org
A user guide is available at
<https://www.wwpdb.org/validation/2017/XrayValidationReportHelp>
with specific help available everywhere you see the ⓘ symbol.

The types of validation reports are described at <http://www.wwpdb.org/validation/2017/FAQs#types>.

The following versions of software and data (see [references](#) ①) were used in the production of this report:

MolProbity : 4.02b-467
Mogul : 1.8.5 (274361), CSD as541be (2020)
Xtrriage (Phenix) : 1.13
EDS : 2.29
buster-report : 1.1.7 (2018)
Percentile statistics : 20191225.v01 (using entries in the PDB archive December 25th 2019)
Refmac : 5.8.0158
CCP4 : 7.0.044 (Gargrove)
Ideal geometry (proteins) : Engh & Huber (2001)
Ideal geometry (DNA, RNA) : Parkinson et al. (1996)
Validation Pipeline (wwPDB-VP) : 2.29

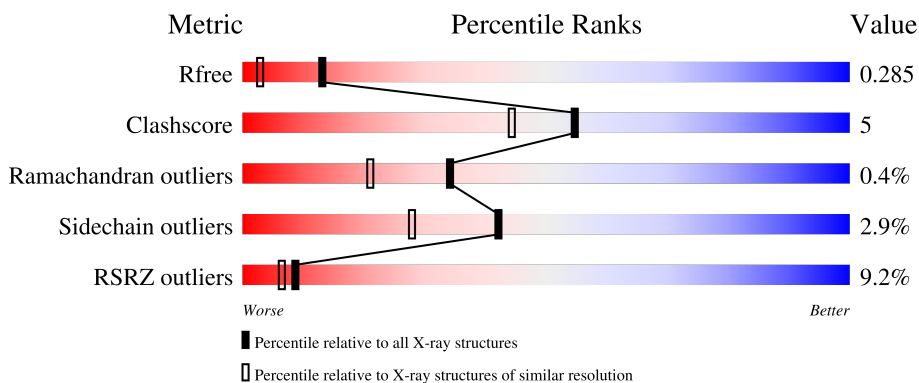
1 Overall quality at a glance i

The following experimental techniques were used to determine the structure:

X-RAY DIFFRACTION

The reported resolution of this entry is 1.82 Å.

Percentile scores (ranging between 0-100) for global validation metrics of the entry are shown in the following graphic. The table shows the number of entries on which the scores are based.



Metric	Whole archive (#Entries)	Similar resolution (#Entries, resolution range(Å))
R_{free}	130704	7484 (1.84-1.80)
Clashscore	141614	8401 (1.84-1.80)
Ramachandran outliers	138981	8290 (1.84-1.80)
Sidechain outliers	138945	8290 (1.84-1.80)
RSRZ outliers	127900	7371 (1.84-1.80)

The table below summarises the geometric issues observed across the polymeric chains and their fit to the electron density. The red, orange, yellow and green segments of the lower bar indicate the fraction of residues that contain outliers for ≥ 3 , 2, 1 and 0 types of geometric quality criteria respectively. A grey segment represents the fraction of residues that are not modelled. The numeric value for each fraction is indicated below the corresponding segment, with a dot representing fractions $\leq 5\%$. The upper red bar (where present) indicates the fraction of residues that have poor fit to the electron density. The numeric value is given above the bar.

Mol	Chain	Length	Quality of chain
1	A	601	 12% 81% 13% 5%
1	B	601	 6% 84% 13% 5%

2 Entry composition [i](#)

There are 5 unique types of molecules in this entry. The entry contains 9438 atoms, of which 0 are hydrogens and 0 are deuteriums.

In the tables below, the ZeroOcc column contains the number of atoms modelled with zero occupancy, the AltConf column contains the number of residues with at least one atom in alternate conformation and the Trace column contains the number of residues modelled with at most 2 atoms.

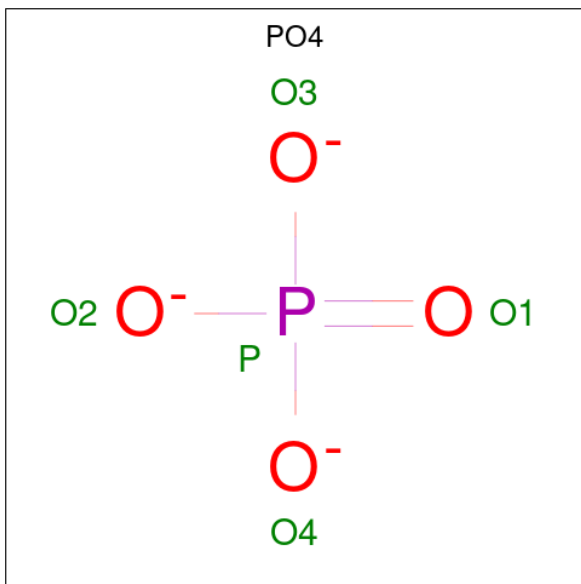
- Molecule 1 is a protein called Helicase.

Mol	Chain	Residues	Atoms					ZeroOcc	AltConf	Trace
			Total	C	N	O	S			
1	A	572	Total 4417	C 2816	N 737	O 832	S 32	0	0	0
1	B	585	Total 4508	C 2875	N 750	O 848	S 35	0	1	0

- Molecule 2 is ZINC ION (three-letter code: ZN) (formula: Zn).

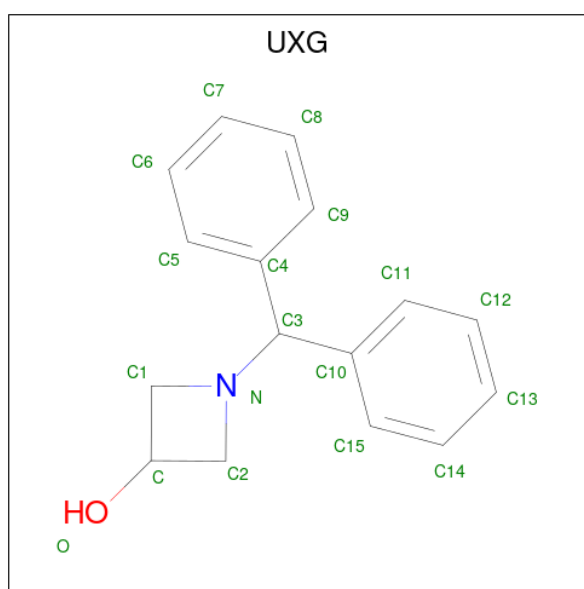
Mol	Chain	Residues	Atoms		ZeroOcc	AltConf
2	A	3	Total 3	Zn 3	0	0
2	B	3	Total 3	Zn 3	0	0

- Molecule 3 is PHOSPHATE ION (three-letter code: PO4) (formula: O₄P).



Mol	Chain	Residues	Atoms	ZeroOcc	AltConf
3	A	1	Total O P 5 4 1	0	0
3	A	1	Total O P 5 4 1	0	0
3	B	1	Total O P 5 4 1	0	0
3	B	1	Total O P 5 4 1	0	0

- Molecule 4 is 1-(diphenylmethyl)azetidin-3-ol (three-letter code: UXG) (formula: C₁₆H₁₇NO) (labeled as "Ligand of Interest" by depositor).



Mol	Chain	Residues	Atoms	ZeroOcc	AltConf
4	B	1	Total C N O 18 16 1 1	0	0
4	B	1	Total C N O 18 16 1 1	0	0

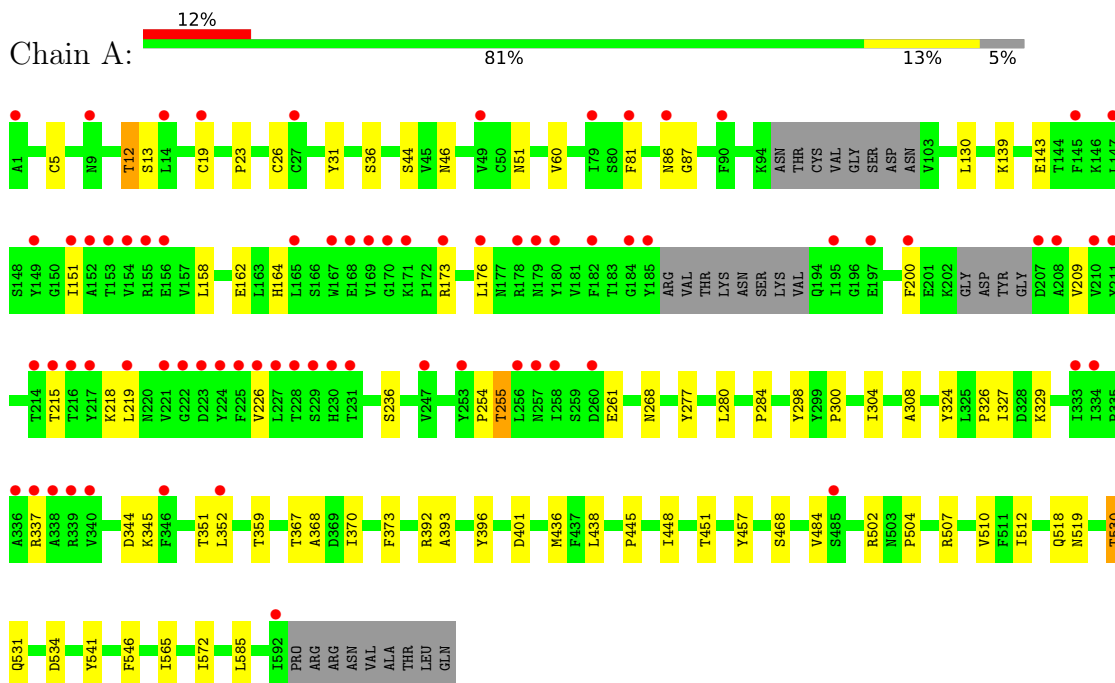
- Molecule 5 is water.

Mol	Chain	Residues	Atoms	ZeroOcc	AltConf
5	A	205	Total O 205 205	0	0
5	B	246	Total O 246 246	0	0

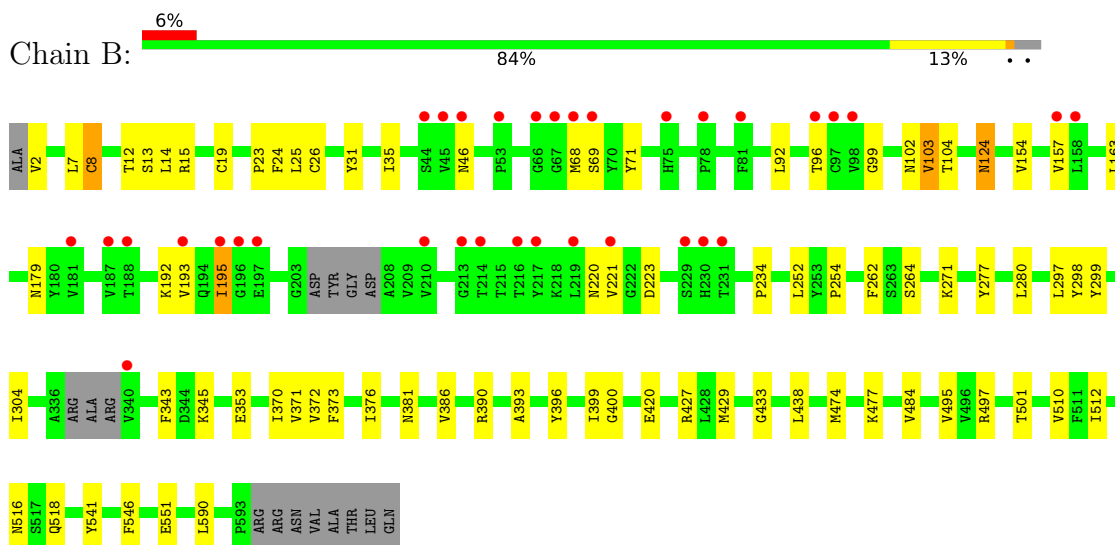
3 Residue-property plots

These plots are drawn for all protein, RNA, DNA and oligosaccharide chains in the entry. The first graphic for a chain summarises the proportions of the various outlier classes displayed in the second graphic. The second graphic shows the sequence view annotated by issues in geometry and electron density. Residues are color-coded according to the number of geometric quality criteria for which they contain at least one outlier: green = 0, yellow = 1, orange = 2 and red = 3 or more. A red dot above a residue indicates a poor fit to the electron density ($RSRZ > 2$). Stretches of 2 or more consecutive residues without any outlier are shown as a green connector. Residues present in the sample, but not in the model, are shown in grey.

- Molecule 1: Helicase



- Molecule 1: Helicase



4 Data and refinement statistics

Property	Value	Source
Space group	P 1	Depositor
Cell constants a, b, c, α , β , γ	58.99Å 70.15Å 85.13Å 102.34° 96.21° 112.56°	Depositor
Resolution (Å)	81.29 – 1.82 81.29 – 1.82	Depositor EDS
% Data completeness (in resolution range)	90.5 (81.29-1.82) 90.5 (81.29-1.82)	Depositor EDS
R_{merge}	0.07	Depositor
R_{sym}	(Not available)	Depositor
$\langle I/\sigma(I) \rangle$ ¹	1.10 (at 1.82Å)	Xtrriage
Refinement program	REFMAC 5.8.0258	Depositor
R, R_{free}	0.231 , 0.273 0.242 , 0.285	Depositor DCC
R_{free} test set	4995 reflections (5.10%)	wwPDB-VP
Wilson B-factor (Å ²)	24.1	Xtrriage
Anisotropy	0.448	Xtrriage
Bulk solvent k_{sol} (e/Å ³), B_{sol} (Å ²)	0.32 , 41.3	EDS
L-test for twinning ²	$\langle L \rangle = 0.49$, $\langle L^2 \rangle = 0.33$	Xtrriage
Estimated twinning fraction	No twinning to report.	Xtrriage
F_o, F_c correlation	0.94	EDS
Total number of atoms	9438	wwPDB-VP
Average B, all atoms (Å ²)	51.0	wwPDB-VP

Xtrriage's analysis on translational NCS is as follows: *The largest off-origin peak in the Patterson function is 5.72% of the height of the origin peak. No significant pseudotranslation is detected.*

¹Intensities estimated from amplitudes.

²Theoretical values of $\langle |L| \rangle$, $\langle L^2 \rangle$ for acentric reflections are 0.5, 0.333 respectively for untwinned datasets, and 0.375, 0.2 for perfectly twinned datasets.

5 Model quality

5.1 Standard geometry

Bond lengths and bond angles in the following residue types are not validated in this section: UXG, PO4, ZN

The Z score for a bond length (or angle) is the number of standard deviations the observed value is removed from the expected value. A bond length (or angle) with $|Z| > 5$ is considered an outlier worth inspection. RMSZ is the root-mean-square of all Z scores of the bond lengths (or angles).

Mol	Chain	Bond lengths		Bond angles	
		RMSZ	# Z >5	RMSZ	# Z >5
1	A	0.70	0/4517	0.82	0/6156
1	B	0.72	0/4610	0.85	0/6283
All	All	0.71	0/9127	0.83	0/12439

There are no bond length outliers.

There are no bond angle outliers.

There are no chirality outliers.

There are no planarity outliers.

5.2 Too-close contacts

In the following table, the Non-H and H(model) columns list the number of non-hydrogen atoms and hydrogen atoms in the chain respectively. The H(added) column lists the number of hydrogen atoms added and optimized by MolProbity. The Clashes column lists the number of clashes within the asymmetric unit, whereas Symm-Clashes lists symmetry-related clashes.

Mol	Chain	Non-H	H(model)	H(added)	Clashes	Symm-Clashes
1	A	4417	0	4321	42	0
1	B	4508	0	4424	52	0
2	A	3	0	0	0	0
2	B	3	0	0	0	0
3	A	10	0	0	1	0
3	B	10	0	0	0	0
4	B	36	0	0	0	0
5	A	205	0	0	2	0
5	B	246	0	0	3	0
All	All	9438	0	8745	92	0

The all-atom clashscore is defined as the number of clashes found per 1000 atoms (including

hydrogen atoms). The all-atom clashscore for this structure is 5.

All (92) close contacts within the same asymmetric unit are listed below, sorted by their clash magnitude.

Atom-1	Atom-2	Interatomic distance (Å)	Clash overlap (Å)
1:B:2:VAL:N	5:B:801:HOH:O	2.00	0.93
1:B:12:THR:HG22	1:B:14:LEU:H	1.38	0.89
1:B:12:THR:HG21	1:B:25:LEU:O	1.82	0.78
1:B:510:VAL:HG21	1:B:541:TYR:CD1	2.21	0.75
1:A:510:VAL:HG21	1:A:541:TYR:CD1	2.30	0.66
1:B:46:ASN:ND2	5:B:805:HOH:O	2.28	0.66
1:B:271:LYS:NZ	5:B:806:HOH:O	2.30	0.64
1:A:215:THR:HG22	1:B:193:VAL:HG21	1.81	0.63
1:B:195:ILE:HG23	1:B:195:ILE:O	1.98	0.62
1:B:512:ILE:O	1:B:546:PHE:HA	2.02	0.59
1:B:124:ASN:OD1	1:B:381:ASN:ND2	2.37	0.57
1:B:277:TYR:HA	1:B:396:TYR:O	2.05	0.56
1:B:474[B]:MET:HG2	1:B:590:LEU:HB2	1.87	0.56
1:B:280:LEU:HD11	1:B:438:LEU:HG	1.87	0.56
1:A:368:ALA:O	1:A:393:ALA:HA	2.06	0.56
1:A:60:VAL:HB	5:A:871:HOH:O	2.05	0.55
1:B:12:THR:OG1	1:B:26:CYS:HA	2.07	0.55
1:A:445:PRO:HB3	1:A:468:SER:HB3	1.90	0.54
1:A:512:ILE:O	1:A:546:PHE:HA	2.08	0.54
1:B:262:PHE:CE2	1:B:297:LEU:HD12	2.44	0.53
1:A:519:ASN:HB3	1:A:530:THR:HG23	1.91	0.53
1:B:220:ASN:O	1:B:223:ASP:OD2	2.27	0.52
1:B:474[A]:MET:SD	1:B:495:VAL:HG11	2.49	0.52
1:A:277:TYR:HA	1:A:396:TYR:O	2.10	0.52
1:B:8:CYS:SG	1:B:99:GLY:N	2.83	0.52
1:B:252:LEU:HB3	1:B:299:TYR:CD1	2.45	0.51
1:A:352:LEU:HD11	1:B:234:PRO:HD3	1.91	0.51
1:B:376:ILE:HG22	1:B:400:GLY:HA3	1.93	0.51
1:A:565:ILE:HA	1:A:572:ILE:HD13	1.92	0.50
1:A:448:ILE:HD13	1:A:565:ILE:O	2.10	0.50
1:A:518:GLN:HA	1:A:518:GLN:OE1	2.12	0.49
1:B:69:SER:HB2	1:B:71:TYR:CE2	2.48	0.48
1:B:477:LYS:NZ	1:B:551:GLU:OE2	2.30	0.48
1:B:195:ILE:O	1:B:195:ILE:CG2	2.61	0.48
1:B:371:VAL:HG23	1:B:393:ALA:HB2	1.95	0.48
1:A:13:SER:OG	1:A:44:SER:OG	2.18	0.48
1:A:139:LYS:O	1:A:143:GLU:HG2	2.13	0.48
1:B:8:CYS:SG	1:B:99:GLY:O	2.71	0.48

Continued on next page...

Continued from previous page...

Atom-1	Atom-2	Interatomic distance (Å)	Clash overlap (Å)
1:B:304:ILE:HA	1:B:370:ILE:O	2.13	0.48
1:B:386:VAL:O	1:B:390:ARG:HG2	2.12	0.48
1:A:5:CYS:SG	1:A:26:CYS:N	2.79	0.47
1:A:13:SER:O	1:A:44:SER:HA	2.13	0.47
1:A:151:ILE:HG12	1:A:226:VAL:HG22	1.97	0.47
1:A:367:THR:HA	1:A:392:ARG:O	2.15	0.47
1:B:154:VAL:HG12	1:B:221:VAL:HA	1.96	0.47
1:B:372:VAL:HG13	1:B:399:ILE:HD12	1.97	0.47
1:A:451:THR:HG21	1:A:585:LEU:HD23	1.97	0.47
1:B:157:VAL:HA	1:B:163:LEU:HD23	1.97	0.47
1:B:372:VAL:CG1	1:B:399:ILE:HD12	2.46	0.46
1:B:13:SER:HB2	1:B:92:LEU:HB2	1.97	0.46
1:A:19:CYS:HB2	1:A:23:PRO:HD2	1.98	0.46
1:A:401:ASP:OD2	1:A:457:TYR:OH	2.22	0.46
1:B:102:ASN:C	1:B:104:THR:H	2.19	0.45
1:B:103:VAL:CG1	1:B:103:VAL:O	2.64	0.45
1:A:284:PRO:HA	3:A:705:PO4:O2	2.16	0.45
1:A:504:PRO:O	1:A:507:ARG:HB2	2.17	0.45
1:B:12:THR:HG22	1:B:14:LEU:N	2.19	0.45
1:A:304:ILE:HA	1:A:370:ILE:O	2.17	0.45
1:B:15:ARG:HG3	1:B:24:PHE:CD2	2.52	0.44
1:B:154:VAL:HG13	1:B:163:LEU:HD22	1.99	0.44
1:B:420:GLU:OE1	1:B:427:ARG:NH1	2.47	0.44
1:A:12:THR:HG21	1:A:26:CYS:HA	2.00	0.43
1:A:326:PRO:HG2	1:A:329:LYS:NZ	2.33	0.43
1:B:343:PHE:CE2	1:B:345:LYS:HB2	2.53	0.43
1:A:519:ASN:HB3	1:A:530:THR:CG2	2.49	0.43
1:B:497:ARG:O	1:B:501:THR:HG23	2.17	0.43
1:B:220:ASN:OD1	1:B:220:ASN:N	2.51	0.43
1:A:261:GLU:OE1	1:A:324:TYR:OH	2.31	0.42
1:A:327:ILE:HD11	1:A:345:LYS:O	2.19	0.42
1:B:7:LEU:HD13	1:B:103:VAL:HG22	2.01	0.42
1:A:158:LEU:HD21	1:A:164:HIS:ND1	2.34	0.42
1:B:31:TYR:CZ	1:B:35:ILE:HG21	2.54	0.42
1:B:429:MET:O	1:B:433:GLY:HA2	2.19	0.42
1:A:130:LEU:HD23	1:A:130:LEU:HA	1.92	0.42
1:A:531:GLN:HE21	1:A:531:GLN:HB2	1.69	0.42
1:A:176:LEU:HD22	1:A:200:PHE:HB2	2.01	0.42
1:A:255:THR:HG23	1:A:300:PRO:HG3	2.02	0.42
1:A:31:TYR:CE2	1:A:87:GLY:HA2	2.55	0.42
1:A:268:ASN:HB3	1:A:436:MET:SD	2.60	0.42

Continued on next page...

Continued from previous page...

Atom-1	Atom-2	Interatomic distance (Å)	Clash overlap (Å)
1:A:280:LEU:HD11	1:A:438:LEU:HG	2.01	0.41
1:B:280:LEU:HD23	1:B:399:ILE:HG12	2.02	0.41
1:B:376:ILE:HG21	1:B:429:MET:HE1	2.01	0.41
1:B:19:CYS:HB2	1:B:23:PRO:HD2	2.01	0.41
1:B:254:PRO:HB3	1:B:298:TYR:CE2	2.56	0.41
1:B:343:PHE:CZ	1:B:345:LYS:HB2	2.56	0.41
1:A:236:SER:OG	5:A:801:HOH:O	2.22	0.41
1:B:376:ILE:HD12	1:B:376:ILE:HA	1.94	0.41
1:A:512:ILE:HA	1:A:531:GLN:O	2.21	0.40
1:A:158:LEU:HD21	1:A:164:HIS:CE1	2.55	0.40
1:A:308:ALA:O	1:A:359:THR:HA	2.22	0.40
1:B:518:GLN:HA	1:B:518:GLN:OE1	2.22	0.40
1:A:254:PRO:HA	1:A:298:TYR:O	2.21	0.40

There are no symmetry-related clashes.

5.3 Torsion angles [i](#)

5.3.1 Protein backbone [i](#)

In the following table, the Percentiles column shows the percent Ramachandran outliers of the chain as a percentile score with respect to all X-ray entries followed by that with respect to entries of similar resolution.

The Analysed column shows the number of residues for which the backbone conformation was analysed, and the total number of residues.

Mol	Chain	Analysed	Favoured	Allowed	Outliers	Percentiles	
1	A	564/601 (94%)	538 (95%)	22 (4%)	4 (1%)	22	10
1	B	580/601 (96%)	548 (94%)	31 (5%)	1 (0%)	47	33
All	All	1144/1202 (95%)	1086 (95%)	53 (5%)	5 (0%)	34	21

All (5) Ramachandran outliers are listed below:

Mol	Chain	Res	Type
1	A	218	LYS
1	A	484	VAL
1	A	219	LEU
1	A	351	THR
1	B	103	VAL

5.3.2 Protein sidechains [i](#)

In the following table, the Percentiles column shows the percent sidechain outliers of the chain as a percentile score with respect to all X-ray entries followed by that with respect to entries of similar resolution.

The Analysed column shows the number of residues for which the sidechain conformation was analysed, and the total number of residues.

Mol	Chain	Analysed	Rotameric	Outliers	Percentiles	
1	A	485/523 (93%)	469 (97%)	16 (3%)	38	23
1	B	498/523 (95%)	486 (98%)	12 (2%)	49	35
All	All	983/1046 (94%)	955 (97%)	28 (3%)	42	29

All (28) residues with a non-rotameric sidechain are listed below:

Mol	Chain	Res	Type
1	A	12	THR
1	A	36	SER
1	A	46	ASN
1	A	51	ASN
1	A	81	PHE
1	A	86	ASN
1	A	162	GLU
1	A	173	ARG
1	A	209	VAL
1	A	255	THR
1	A	337	ARG
1	A	344	ASP
1	A	373	PHE
1	A	502	ARG
1	A	530	THR
1	A	534	ASP
1	B	8	CYS
1	B	68	MET
1	B	96	THR
1	B	124	ASN
1	B	179	ASN
1	B	192	LYS
1	B	195	ILE
1	B	264	SER
1	B	353	GLU
1	B	373	PHE
1	B	484	VAL

Continued on next page...

Continued from previous page...

Mol	Chain	Res	Type
1	B	516	ASN

Sometimes sidechains can be flipped to improve hydrogen bonding and reduce clashes. All (4) such sidechains are listed below:

Mol	Chain	Res	Type
1	A	51	ASN
1	B	179	ASN
1	B	268	ASN
1	B	516	ASN

5.3.3 RNA [i](#)

There are no RNA molecules in this entry.

5.4 Non-standard residues in protein, DNA, RNA chains [i](#)

There are no non-standard protein/DNA/RNA residues in this entry.

5.5 Carbohydrates [i](#)

There are no monosaccharides in this entry.

5.6 Ligand geometry [i](#)

Of 12 ligands modelled in this entry, 6 are monoatomic - leaving 6 for Mogul analysis.

In the following table, the Counts columns list the number of bonds (or angles) for which Mogul statistics could be retrieved, the number of bonds (or angles) that are observed in the model and the number of bonds (or angles) that are defined in the Chemical Component Dictionary. The Link column lists molecule types, if any, to which the group is linked. The Z score for a bond length (or angle) is the number of standard deviations the observed value is removed from the expected value. A bond length (or angle) with $|Z| > 2$ is considered an outlier worth inspection. RMSZ is the root-mean-square of all Z scores of the bond lengths (or angles).

Mol	Type	Chain	Res	Link	Bond lengths			Bond angles		
					Counts	RMSZ	$\# Z > 2$	Counts	RMSZ	$\# Z > 2$
3	PO4	B	706	-	4,4,4	0.73	0	6,6,6	0.44	0
3	PO4	A	705	-	4,4,4	1.01	0	6,6,6	0.68	0
4	UXG	B	702	-	18,20,20	0.22	0	19,27,27	0.66	0
3	PO4	B	707	-	4,4,4	0.84	0	6,6,6	0.40	0

Mol	Type	Chain	Res	Link	Bond lengths			Bond angles		
					Counts	RMSZ	# Z > 2	Counts	RMSZ	# Z > 2
3	PO4	A	704	-	4,4,4	0.44	0	6,6,6	0.61	0
4	UXG	B	701	-	18,20,20	0.45	0	19,27,27	1.31	2 (10%)

In the following table, the Chirals column lists the number of chiral outliers, the number of chiral centers analysed, the number of these observed in the model and the number defined in the Chemical Component Dictionary. Similar counts are reported in the Torsion and Rings columns. '-' means no outliers of that kind were identified.

Mol	Type	Chain	Res	Link	Chirals	Torsions	Rings
4	UXG	B	702	-	-	0/12/20/20	0/3/3/3
4	UXG	B	701	-	-	0/12/20/20	0/3/3/3

There are no bond length outliers.

All (2) bond angle outliers are listed below:

Mol	Chain	Res	Type	Atoms	Z	Observed(°)	Ideal(°)
4	B	701	UXG	C10-C3-N	3.75	116.88	111.42
4	B	701	UXG	C4-C3-N	-3.67	106.10	111.42

There are no chirality outliers.

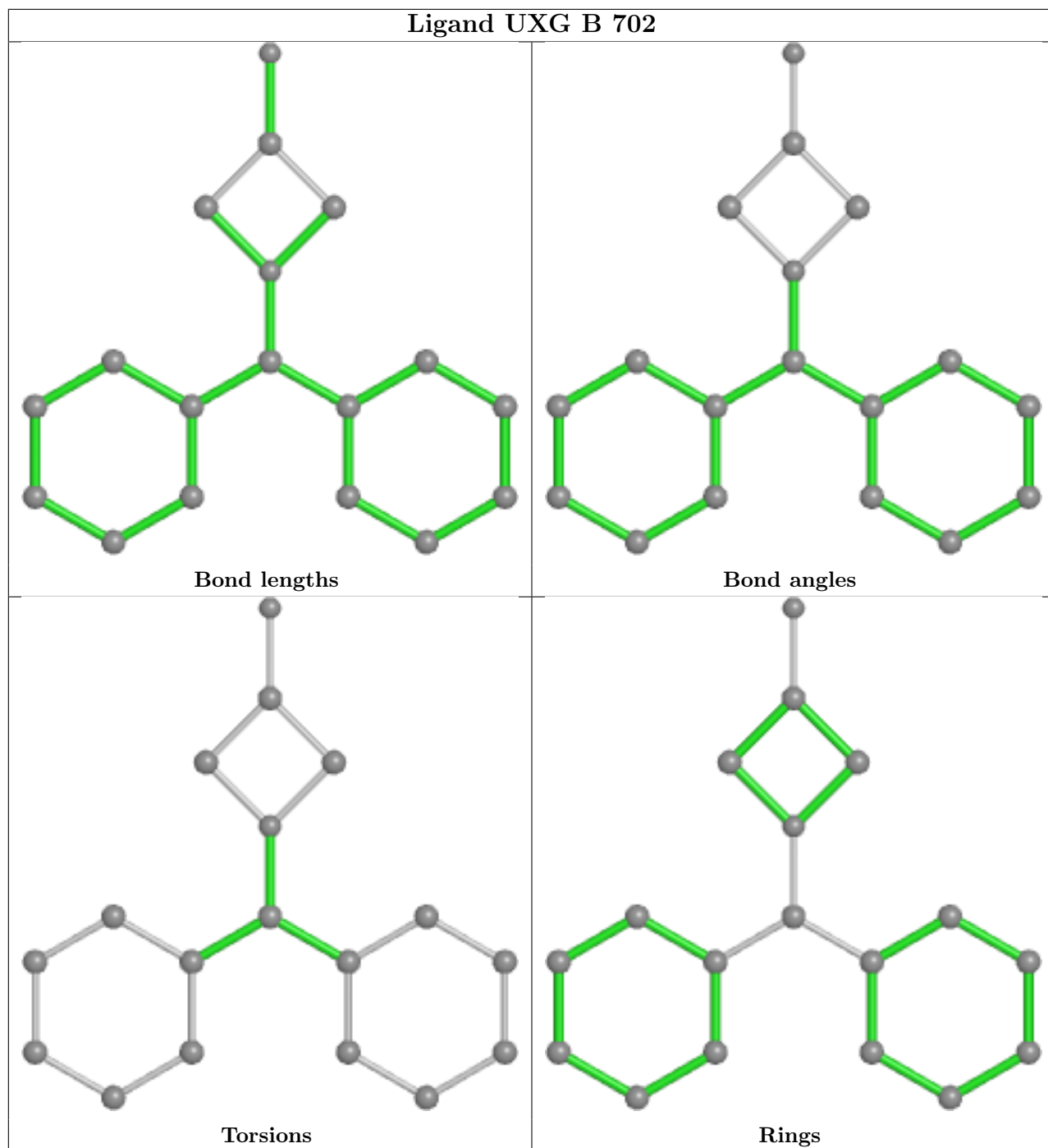
There are no torsion outliers.

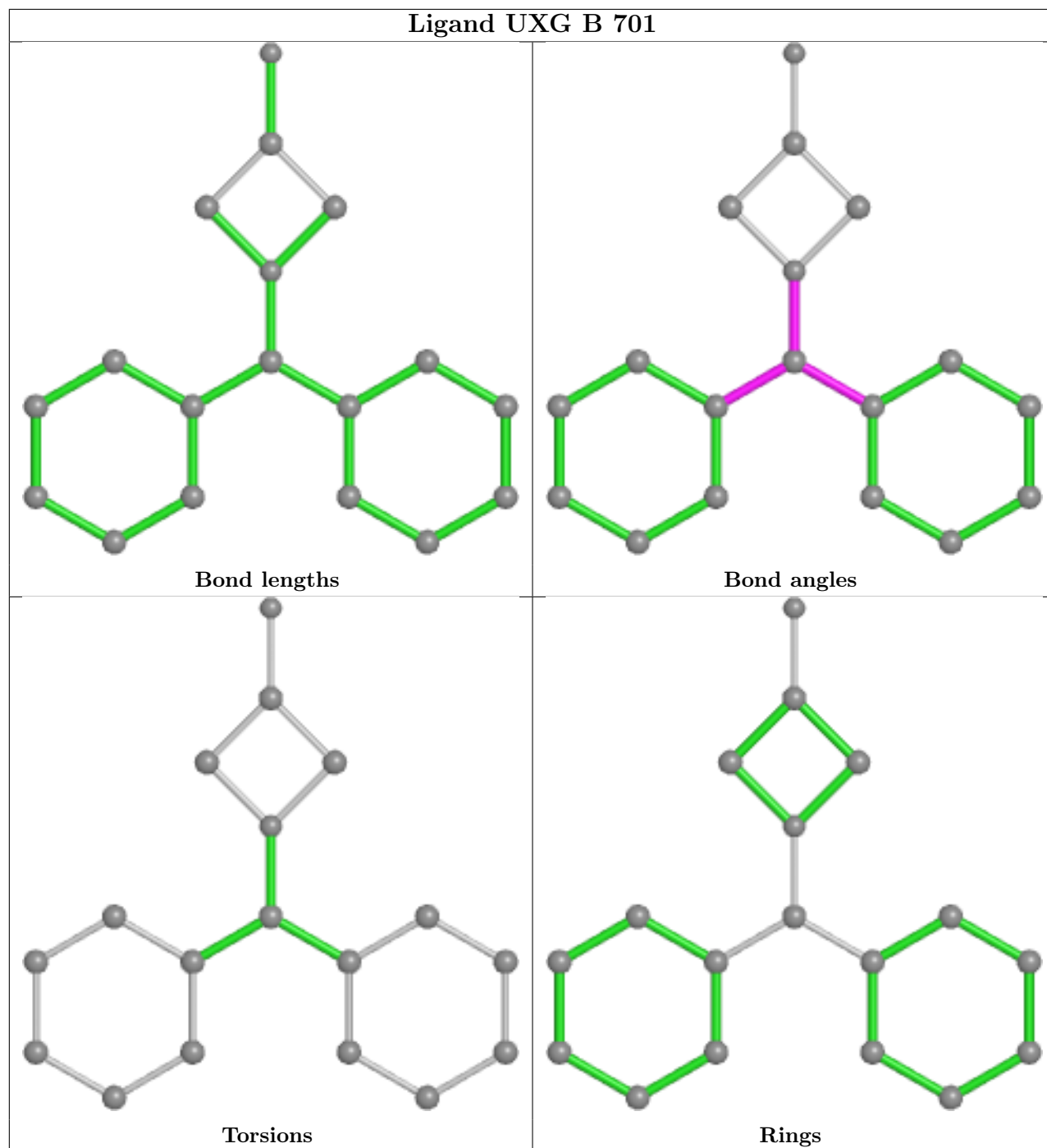
There are no ring outliers.

1 monomer is involved in 1 short contact:

Mol	Chain	Res	Type	Clashes	Symm-Clashes
3	A	705	PO4	1	0

The following is a two-dimensional graphical depiction of Mogul quality analysis of bond lengths, bond angles, torsion angles, and ring geometry for all instances of the Ligand of Interest. In addition, ligands with molecular weight > 250 and outliers as shown on the validation Tables will also be included. For torsion angles, if less than 5% of the Mogul distribution of torsion angles is within 10 degrees of the torsion angle in question, then that torsion angle is considered an outlier. Any bond that is central to one or more torsion angles identified as an outlier by Mogul will be highlighted in the graph. For rings, the root-mean-square deviation (RMSD) between the ring in question and similar rings identified by Mogul is calculated over all ring torsion angles. If the average RMSD is greater than 60 degrees and the minimal RMSD between the ring in question and any Mogul-identified rings is also greater than 60 degrees, then that ring is considered an outlier. The outliers are highlighted in purple. The color gray indicates Mogul did not find sufficient equivalents in the CSD to analyse the geometry.





5.7 Other polymers [i](#)

There are no such residues in this entry.

5.8 Polymer linkage issues [i](#)

There are no chain breaks in this entry.

6 Fit of model and data

6.1 Protein, DNA and RNA chains

In the following table, the column labelled ‘#RSRZ > 2’ contains the number (and percentage) of RSRZ outliers, followed by percent RSRZ outliers for the chain as percentile scores relative to all X-ray entries and entries of similar resolution. The OWAB column contains the minimum, median, 95th percentile and maximum values of the occupancy-weighted average B-factor per residue. The column labelled ‘Q < 0.9’ lists the number of (and percentage) of residues with an average occupancy less than 0.9.

Mol	Chain	Analysed	<RSRZ>	#RSRZ>2	OWAB(Å ²)	Q<0.9
1	A	572/601 (95%)	0.58	73 (12%) 3 2	21, 52, 111, 134	0
1	B	585/601 (97%)	0.11	34 (5%) 23 18	19, 39, 89, 125	0
All	All	1157/1202 (96%)	0.34	107 (9%) 9 6	19, 45, 101, 134	0

All (107) RSRZ outliers are listed below:

Mol	Chain	Res	Type	RSRZ
1	A	215	THR	11.2
1	A	170	GLY	9.6
1	A	256	LEU	7.5
1	A	216	THR	6.7
1	B	217	TYR	6.6
1	B	340	VAL	6.2
1	A	219	LEU	5.5
1	B	193	VAL	5.5
1	A	152	ALA	5.4
1	A	336	ALA	5.1
1	A	228	THR	4.9
1	A	155	ARG	4.8
1	A	210	VAL	4.7
1	A	221	VAL	4.6
1	A	154	VAL	4.3
1	A	81	PHE	4.2
1	A	340	VAL	4.2
1	A	229	SER	4.1
1	A	151	ILE	4.1
1	A	253	TYR	4.0
1	A	257	ASN	3.9
1	A	165	LEU	3.9
1	B	66	GLY	3.9
1	A	179	ASN	3.8

Continued on next page...

Continued from previous page...

Mol	Chain	Res	Type	RSRZ
1	B	187	VAL	3.8
1	A	339	ARG	3.8
1	A	153	THR	3.7
1	A	149	TYR	3.7
1	B	45	VAL	3.7
1	B	53	PRO	3.7
1	A	338	ALA	3.6
1	A	217	TYR	3.6
1	B	158	LEU	3.6
1	A	169	VAL	3.5
1	A	225	PHE	3.5
1	B	210	VAL	3.5
1	B	67	GLY	3.5
1	B	229	SER	3.4
1	A	178	ARG	3.4
1	A	224	TYR	3.3
1	A	352	LEU	3.3
1	A	79	ILE	3.3
1	A	182	PHE	3.2
1	A	156	GLU	3.2
1	A	176	LEU	3.1
1	A	214	THR	3.1
1	A	200	PHE	3.1
1	A	184	GLY	3.1
1	A	334	ILE	3.0
1	A	337	ARG	2.9
1	B	216	THR	2.8
1	B	157	VAL	2.8
1	A	197	GLU	2.8
1	A	226	VAL	2.8
1	A	247	VAL	2.8
1	B	188	THR	2.7
1	A	333	ILE	2.7
1	A	222	GLY	2.7
1	B	231	THR	2.7
1	A	167	TRP	2.7
1	A	180	TYR	2.7
1	B	98	VAL	2.7
1	A	27	CYS	2.6
1	B	78	PRO	2.5
1	B	196	GLY	2.5
1	A	485	SER	2.5

Continued on next page...

Continued from previous page...

Mol	Chain	Res	Type	RSRZ
1	A	230	HIS	2.5
1	B	46	ASN	2.5
1	A	90	PHE	2.5
1	B	68	MET	2.4
1	B	97	CYS	2.4
1	A	231	THR	2.4
1	A	592	ILE	2.4
1	A	86	ASN	2.4
1	A	346	PHE	2.4
1	A	173	ARG	2.4
1	A	14	LEU	2.3
1	A	207	ASP	2.3
1	B	214	THR	2.3
1	A	145	PHE	2.3
1	B	221	VAL	2.3
1	B	230	HIS	2.3
1	A	195	ILE	2.3
1	A	211	TYR	2.3
1	B	75	HIS	2.3
1	A	19	CYS	2.3
1	A	49	VAL	2.2
1	A	168	GLU	2.2
1	A	9	ASN	2.2
1	B	219	LEU	2.2
1	A	223	ASP	2.2
1	A	171	LYS	2.2
1	B	81	PHE	2.2
1	B	181	VAL	2.2
1	A	208	ALA	2.1
1	A	185	TYR	2.1
1	B	195	ILE	2.1
1	A	1	ALA	2.1
1	B	96	THR	2.1
1	A	147	LEU	2.1
1	A	260	ASP	2.1
1	B	213	GLY	2.1
1	B	44	SER	2.1
1	B	69	SER	2.1
1	B	197	GLU	2.1
1	A	258	ILE	2.1
1	A	227	LEU	2.0

6.2 Non-standard residues in protein, DNA, RNA chains [i](#)

There are no non-standard protein/DNA/RNA residues in this entry.

6.3 Carbohydrates [i](#)

There are no monosaccharides in this entry.

6.4 Ligands [i](#)

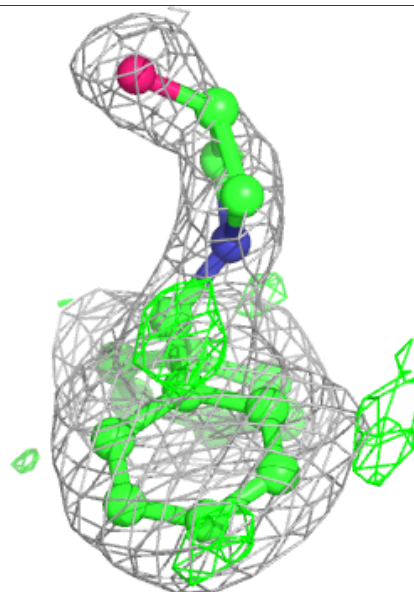
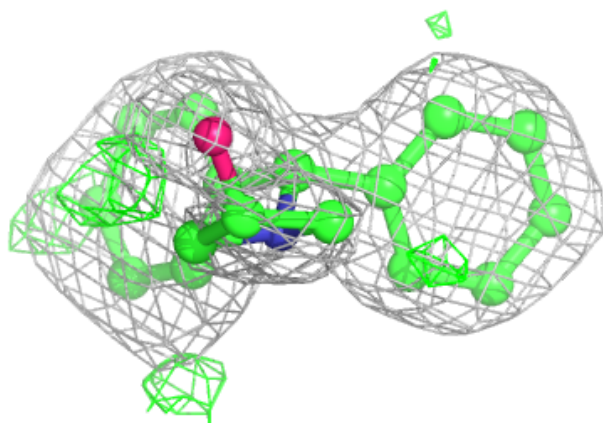
In the following table, the Atoms column lists the number of modelled atoms in the group and the number defined in the chemical component dictionary. The B-factors column lists the minimum, median, 95th percentile and maximum values of B factors of atoms in the group. The column labelled 'Q< 0.9' lists the number of atoms with occupancy less than 0.9.

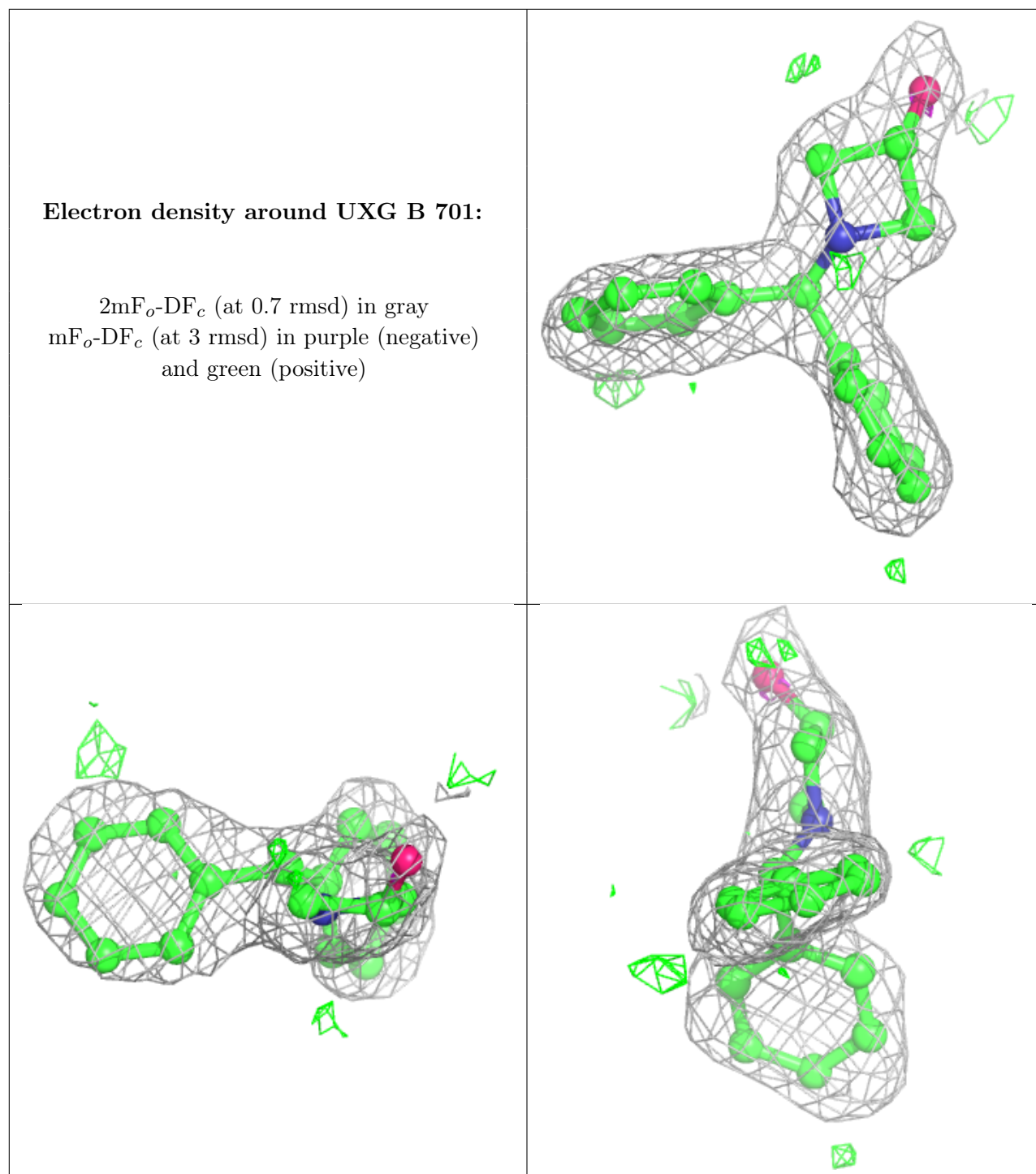
Mol	Type	Chain	Res	Atoms	RSCC	RSR	B-factors(\AA^2)	Q<0.9
4	UXG	B	702	18/18	0.80	0.21	22,24,33,33	18
4	UXG	B	701	18/18	0.83	0.16	15,18,22,22	18
2	ZN	A	703	1/1	0.93	0.06	86,86,86,86	0
2	ZN	B	705	1/1	0.93	0.05	71,71,71,71	0
2	ZN	A	702	1/1	0.95	0.12	51,51,51,51	0
3	PO4	B	706	5/5	0.95	0.14	25,27,34,38	0
3	PO4	B	707	5/5	0.95	0.11	21,27,31,31	0
2	ZN	A	701	1/1	0.95	0.07	57,57,57,57	0
2	ZN	B	704	1/1	0.95	0.09	56,56,56,56	0
3	PO4	A	705	5/5	0.97	0.10	30,36,40,43	0
3	PO4	A	704	5/5	0.98	0.10	30,33,38,45	0
2	ZN	B	703	1/1	0.98	0.09	38,38,38,38	0

The following is a graphical depiction of the model fit to experimental electron density of all instances of the Ligand of Interest. In addition, ligands with molecular weight > 250 and outliers as shown on the geometry validation Tables will also be included. Each fit is shown from different orientation to approximate a three-dimensional view.

Electron density around UXG B 702:

$2mF_o-DF_c$ (at 0.7 rmsd) in gray
 mF_o-DF_c (at 3 rmsd) in purple (negative)
and green (positive)





6.5 Other polymers [i](#)

There are no such residues in this entry.