



Full wwPDB X-ray Structure Validation Report ⓘ

Oct 11, 2023 – 05:58 PM EDT

PDB ID : 7RP0
Title : Structural Snapshots of Intermediates in the Gating of a K⁺ Channel
Authors : Reddi, R.; Matulef, K.; Riederer, E.A.; Valiyaveetil, F.I.
Deposited on : 2021-08-02
Resolution : 2.48 Å(reported)

This is a Full wwPDB X-ray Structure Validation Report for a publicly released PDB entry.

We welcome your comments at validation@mail.wwpdb.org

A user guide is available at

<https://www.wwpdb.org/validation/2017/XrayValidationReportHelp>

with specific help available everywhere you see the ⓘ symbol.

The types of validation reports are described at

<http://www.wwpdb.org/validation/2017/FAQs#types>.

The following versions of software and data (see [references ⓘ](#)) were used in the production of this report:

MolProbity : 4.02b-467
Mogul : 1.8.5 (274361), CSD as541be (2020)
Xtriage (Phenix) : 1.13
EDS : 2.35.1
buster-report : 1.1.7 (2018)
Percentile statistics : 20191225.v01 (using entries in the PDB archive December 25th 2019)
Refmac : 5.8.0158
CCP4 : 7.0.044 (Gargrove)
Ideal geometry (proteins) : Engh & Huber (2001)
Ideal geometry (DNA, RNA) : Parkinson et al. (1996)
Validation Pipeline (wwPDB-VP) : 2.35.1

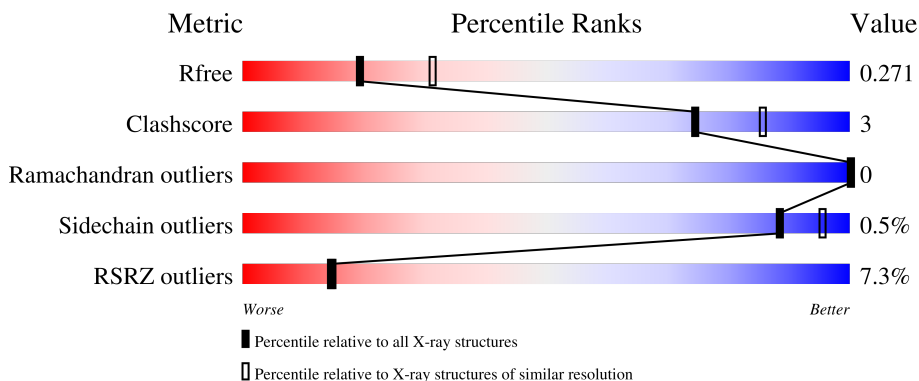
1 Overall quality at a glance

The following experimental techniques were used to determine the structure:

X-RAY DIFFRACTION

The reported resolution of this entry is 2.48 Å.

Percentile scores (ranging between 0-100) for global validation metrics of the entry are shown in the following graphic. The table shows the number of entries on which the scores are based.



Metric	Whole archive (#Entries)	Similar resolution (#Entries, resolution range(Å))
R_{free}	130704	5857 (2.50-2.46)
Clashscore	141614	6594 (2.50-2.46)
Ramachandran outliers	138981	6469 (2.50-2.46)
Sidechain outliers	138945	6471 (2.50-2.46)
RSRZ outliers	127900	5738 (2.50-2.46)

The table below summarises the geometric issues observed across the polymeric chains and their fit to the electron density. The red, orange, yellow and green segments of the lower bar indicate the fraction of residues that contain outliers for ≥ 3 , 2, 1 and 0 types of geometric quality criteria respectively. A grey segment represents the fraction of residues that are not modelled. The numeric value for each fraction is indicated below the corresponding segment, with a dot representing fractions $\leq 5\%$. The upper red bar (where present) indicates the fraction of residues that have poor fit to the electron density. The numeric value is given above the bar.

Mol	Chain	Length	Quality of chain
1	A	219	
2	B	212	
3	C	103	

The following table lists non-polymeric compounds, carbohydrate monomers and non-standard residues in protein, DNA, RNA chains that are outliers for geometric or electron-density-fit criteria:

Mol	Type	Chain	Res	Chirality	Geometry	Clashes	Electron density
4	F09	A	301	-	-	-	X

2 Entry composition [i](#)

There are 8 unique types of molecules in this entry. The entry contains 4115 atoms, of which 0 are hydrogens and 0 are deuteriums.

In the tables below, the ZeroOcc column contains the number of atoms modelled with zero occupancy, the AltConf column contains the number of residues with at least one atom in alternate conformation and the Trace column contains the number of residues modelled with at most 2 atoms.

- Molecule 1 is a protein called KcsA Fab chain A.

Mol	Chain	Residues	Atoms					ZeroOcc	AltConf	Trace
			Total	C	N	O	S			
1	A	219	1610	1023	269	312	6	0	0	0

- Molecule 2 is a protein called KcsA Fab chain B.

Mol	Chain	Residues	Atoms					ZeroOcc	AltConf	Trace
			Total	C	N	O	S			
2	B	212	1646	1022	282	337	5	0	0	0

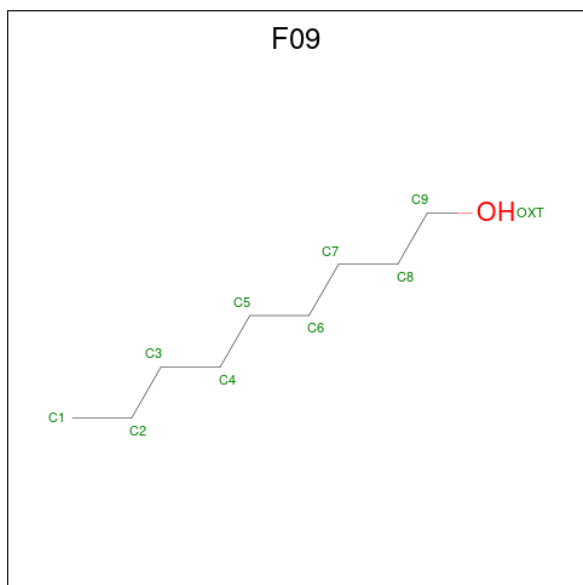
- Molecule 3 is a protein called pH-gated potassium channel KcsA.

Mol	Chain	Residues	Atoms					ZeroOcc	AltConf	Trace
			Total	C	N	O	S			
3	C	103	760	498	130	131	1	0	0	0

There is a discrepancy between the modelled and reference sequences:

Chain	Residue	Modelled	Actual	Comment	Reference
C	82	ALA	TYR	engineered mutation	UNP P0A334

- Molecule 4 is NONAN-1-OL (three-letter code: F09) (formula: C₉H₂₀O).

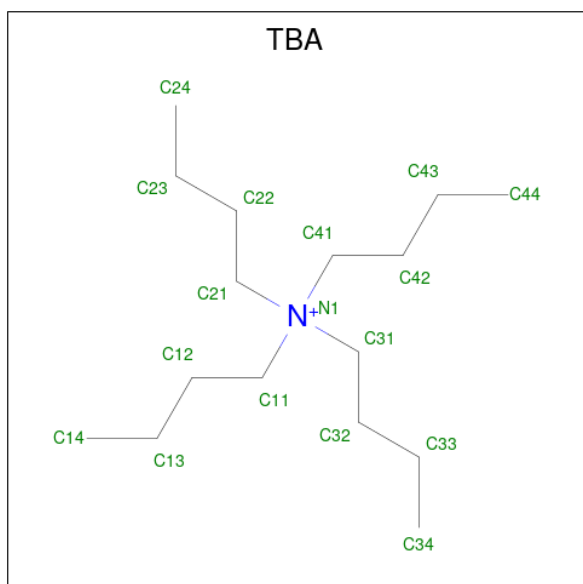


Mol	Chain	Residues	Atoms			ZeroOcc	AltConf
4	A	1	Total	C	O	0	0
			10	9	1		

- Molecule 5 is POTASSIUM ION (three-letter code: K) (formula: K) (labeled as "Ligand of Interest" by depositor).

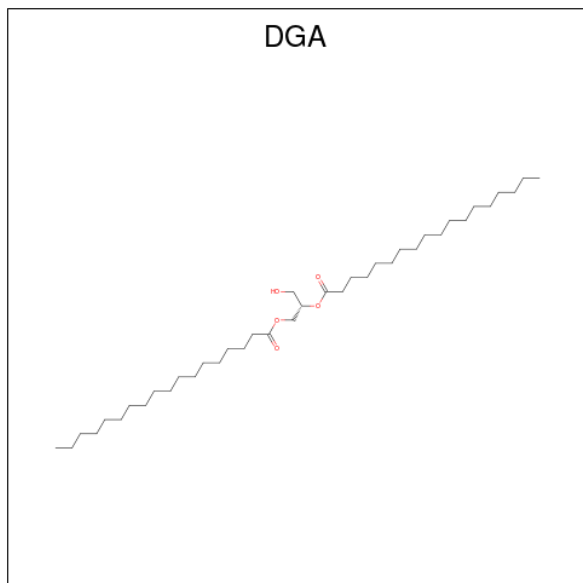
Mol	Chain	Residues	Atoms		ZeroOcc	AltConf
5	C	4	Total	K	0	0
			4	4		

- Molecule 6 is TETRABUTYLAMMONIUM ION (three-letter code: TBA) (formula: $C_{16}H_{36}N$).



Mol	Chain	Residues	Atoms			ZeroOcc	AltConf
6	C	1	Total	C	N	0	0
			17	16	1		

- Molecule 7 is DIACYL GLYCEROL (three-letter code: DGA) (formula: C₃₉H₇₆O₅).



Mol	Chain	Residues	Atoms			ZeroOcc	AltConf
7	C	1	Total	C	O	0	0
			31	26	5		

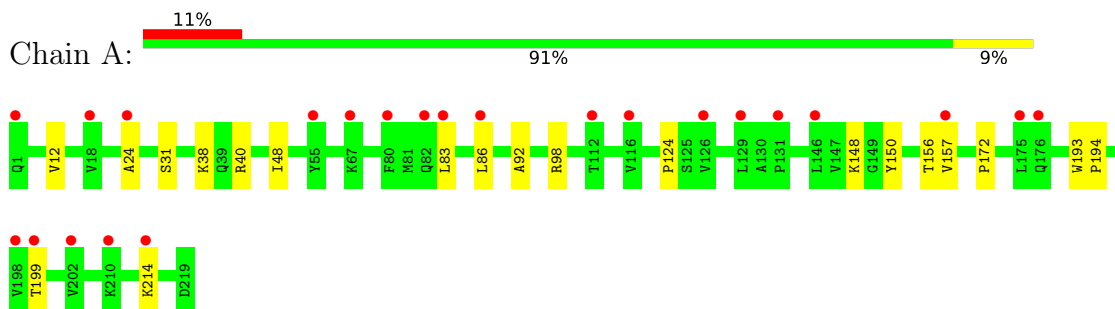
- Molecule 8 is water.

Mol	Chain	Residues	Atoms		ZeroOcc	AltConf
8	A	8	Total	O	0	0
			8	8		
8	B	22	Total	O	0	0
			22	22		
8	C	7	Total	O	0	0
			7	7		

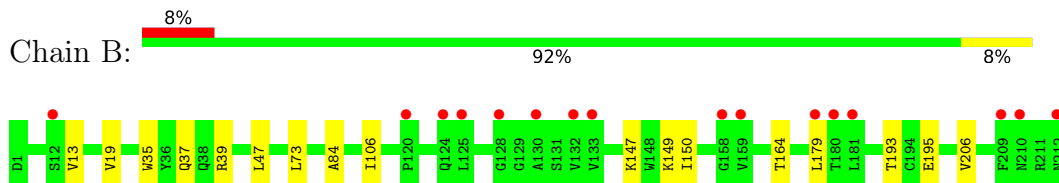
3 Residue-property plots [i](#)

These plots are drawn for all protein, RNA, DNA and oligosaccharide chains in the entry. The first graphic for a chain summarises the proportions of the various outlier classes displayed in the second graphic. The second graphic shows the sequence view annotated by issues in geometry and electron density. Residues are color-coded according to the number of geometric quality criteria for which they contain at least one outlier: green = 0, yellow = 1, orange = 2 and red = 3 or more. A red dot above a residue indicates a poor fit to the electron density ($RSRZ > 2$). Stretches of 2 or more consecutive residues without any outlier are shown as a green connector. Residues present in the sample, but not in the model, are shown in grey.

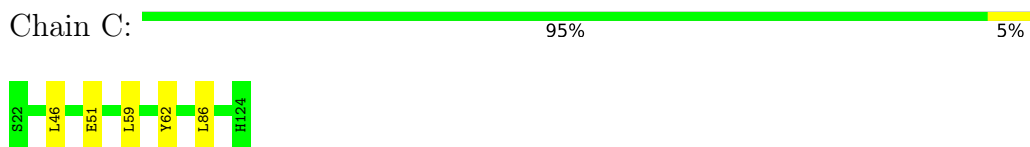
- Molecule 1: KcsA Fab chain A



- Molecule 2: KcsA Fab chain B



- Molecule 3: pH-gated potassium channel KcsA



4 Data and refinement statistics i

Property	Value	Source
Space group	I 4	Depositor
Cell constants a, b, c, α , β , γ	155.33Å 155.33Å 76.27Å 90.00° 90.00° 90.00°	Depositor
Resolution (Å)	54.92 – 2.48 54.92 – 2.48	Depositor EDS
% Data completeness (in resolution range)	90.0 (54.92-2.48) 89.5 (54.92-2.48)	Depositor EDS
R_{merge}	(Not available)	Depositor
R_{sym}	(Not available)	Depositor
$\langle I/\sigma(I) \rangle$ ¹	1.18 (at 2.48Å)	Xtrriage
Refinement program	PHENIX 1.14 3260	Depositor
R, R_{free}	0.241 , 0.271 0.242 , 0.271	Depositor DCC
R_{free} test set	3262 reflections (10.13%)	wwPDB-VP
Wilson B-factor (Å ²)	37.4	Xtrriage
Anisotropy	0.723	Xtrriage
Bulk solvent k_{sol} (e/Å ³), B_{sol} (Å ²)	0.32 , 45.6	EDS
L-test for twinning ²	$\langle L \rangle = 0.48$, $\langle L^2 \rangle = 0.31$	Xtrriage
Estimated twinning fraction	0.038 for -k,-h,-l	Xtrriage
F_o, F_c correlation	0.91	EDS
Total number of atoms	4115	wwPDB-VP
Average B, all atoms (Å ²)	55.0	wwPDB-VP

Xtrriage's analysis on translational NCS is as follows: *The largest off-origin peak in the Patterson function is 3.50% of the height of the origin peak. No significant pseudotranslation is detected.*

¹Intensities estimated from amplitudes.

²Theoretical values of $\langle |L| \rangle$, $\langle L^2 \rangle$ for acentric reflections are 0.5, 0.333 respectively for untwinned datasets, and 0.375, 0.2 for perfectly twinned datasets.

5 Model quality [i](#)

5.1 Standard geometry [i](#)

Bond lengths and bond angles in the following residue types are not validated in this section: F09, TBA, DGA, K

The Z score for a bond length (or angle) is the number of standard deviations the observed value is removed from the expected value. A bond length (or angle) with $|Z| > 5$ is considered an outlier worth inspection. RMSZ is the root-mean-square of all Z scores of the bond lengths (or angles).

Mol	Chain	Bond lengths		Bond angles	
		RMSZ	# Z >5	RMSZ	# Z >5
1	A	0.25	0/1654	0.45	0/2267
2	B	0.25	0/1683	0.43	0/2283
3	C	0.23	0/778	0.38	0/1069
All	All	0.24	0/4115	0.43	0/5619

There are no bond length outliers.

There are no bond angle outliers.

There are no chirality outliers.

There are no planarity outliers.

5.2 Too-close contacts [i](#)

In the following table, the Non-H and H(model) columns list the number of non-hydrogen atoms and hydrogen atoms in the chain respectively. The H(added) column lists the number of hydrogen atoms added and optimized by MolProbity. The Clashes column lists the number of clashes within the asymmetric unit, whereas Symm-Clashes lists symmetry-related clashes.

Mol	Chain	Non-H	H(model)	H(added)	Clashes	Symm-Clashes
1	A	1610	0	1545	11	0
2	B	1646	0	1572	10	0
3	C	760	0	772	5	0
4	A	10	0	20	1	0
5	C	4	0	0	0	0
6	C	17	0	36	2	0
7	C	31	0	44	2	0
8	A	8	0	0	0	0
8	B	22	0	0	0	0
8	C	7	0	0	0	0
All	All	4115	0	3989	26	0

The all-atom clashscore is defined as the number of clashes found per 1000 atoms (including hydrogen atoms). The all-atom clashscore for this structure is 3.

All (26) close contacts within the same asymmetric unit are listed below, sorted by their clash magnitude.

Atom-1	Atom-2	Interatomic distance (Å)	Clash overlap (Å)
2:B:37:GLN:HB2	2:B:47:LEU:HD11	1.71	0.72
1:A:83:LEU:HB3	1:A:86:LEU:HD21	1.81	0.62
4:A:301:F09:H62	3:C:46:LEU:HD22	1.86	0.58
1:A:40:ARG:HG2	1:A:92:ALA:HB2	1.88	0.56
2:B:13:VAL:HG21	2:B:19:VAL:HB	1.88	0.54
3:C:86:LEU:HB2	7:C:506:DGA:HG11	1.90	0.53
1:A:124:PRO:HB3	1:A:150:TYR:HB3	1.92	0.52
3:C:51:GLU:HG3	3:C:59:LEU:HB3	1.92	0.51
1:A:38:LYS:HB2	1:A:48:ILE:HD11	1.94	0.49
3:C:86:LEU:HD22	7:C:506:DGA:HB21	1.94	0.49
1:A:172:PRO:HD3	2:B:164:THR:HG22	1.97	0.46
2:B:150:ILE:HD11	2:B:179:LEU:HD21	1.97	0.46
1:A:12:VAL:HG11	1:A:86:LEU:HD12	1.99	0.44
6:C:505:TBA:H321	6:C:505:TBA:H412	1.57	0.44
1:A:193:TRP:CD1	1:A:194:PRO:HA	2.53	0.44
2:B:39:ARG:HG2	2:B:84:ALA:HB2	2.00	0.43
6:C:505:TBA:H422	6:C:505:TBA:H111	1.81	0.43
1:A:24:ALA:HB1	1:A:98:ARG:HH21	1.83	0.43
1:A:31:SER:HB2	3:C:62:TYR:CE1	2.54	0.43
2:B:147:LYS:HB3	2:B:195:GLU:HB2	2.01	0.43
2:B:149:LYS:HB2	2:B:193:THR:HB	2.01	0.41
2:B:195:GLU:HG2	2:B:206:VAL:HG22	2.03	0.41
2:B:35:TRP:CE2	2:B:73:LEU:HB2	2.56	0.41
1:A:148:LYS:HE2	1:A:148:LYS:HB2	1.92	0.40
2:B:13:VAL:O	2:B:106:ILE:HA	2.22	0.40
1:A:199:THR:HG22	1:A:214:LYS:HA	2.03	0.40

There are no symmetry-related clashes.

5.3 Torsion angles [i](#)

5.3.1 Protein backbone [i](#)

In the following table, the Percentiles column shows the percent Ramachandran outliers of the chain as a percentile score with respect to all X-ray entries followed by that with respect to entries of similar resolution.

The Analysed column shows the number of residues for which the backbone conformation was analysed, and the total number of residues.

Mol	Chain	Analysed	Favoured	Allowed	Outliers	Percentiles	
1	A	217/219 (99%)	207 (95%)	10 (5%)	0	100	100
2	B	210/212 (99%)	201 (96%)	9 (4%)	0	100	100
3	C	101/103 (98%)	100 (99%)	1 (1%)	0	100	100
All	All	528/534 (99%)	508 (96%)	20 (4%)	0	100	100

There are no Ramachandran outliers to report.

5.3.2 Protein sidechains [i](#)

In the following table, the Percentiles column shows the percent sidechain outliers of the chain as a percentile score with respect to all X-ray entries followed by that with respect to entries of similar resolution.

The Analysed column shows the number of residues for which the sidechain conformation was analysed, and the total number of residues.

Mol	Chain	Analysed	Rotameric	Outliers	Percentiles	
1	A	172/185 (93%)	170 (99%)	2 (1%)	71	87
2	B	189/190 (100%)	189 (100%)	0	100	100
3	C	71/74 (96%)	71 (100%)	0	100	100
All	All	432/449 (96%)	430 (100%)	2 (0%)	88	95

All (2) residues with a non-rotameric sidechain are listed below:

Mol	Chain	Res	Type
1	A	156	THR
1	A	157	VAL

Sometimes sidechains can be flipped to improve hydrogen bonding and reduce clashes. All (1) such sidechains are listed below:

Mol	Chain	Res	Type
2	B	124	GLN

5.3.3 RNA [i](#)

There are no RNA molecules in this entry.

5.4 Non-standard residues in protein, DNA, RNA chains [i](#)

There are no non-standard protein/DNA/RNA residues in this entry.

5.5 Carbohydrates [i](#)

There are no monosaccharides in this entry.

5.6 Ligand geometry [i](#)

Of 7 ligands modelled in this entry, 4 are monoatomic - leaving 3 for Mogul analysis.

In the following table, the Counts columns list the number of bonds (or angles) for which Mogul statistics could be retrieved, the number of bonds (or angles) that are observed in the model and the number of bonds (or angles) that are defined in the Chemical Component Dictionary. The Link column lists molecule types, if any, to which the group is linked. The Z score for a bond length (or angle) is the number of standard deviations the observed value is removed from the expected value. A bond length (or angle) with $|Z| > 2$ is considered an outlier worth inspection. RMSZ is the root-mean-square of all Z scores of the bond lengths (or angles).

Mol	Type	Chain	Res	Link	Bond lengths			Bond angles		
					Counts	RMSZ	# Z > 2	Counts	RMSZ	# Z > 2
4	F09	A	301	-	9,9,9	0.31	0	8,8,8	0.75	0
6	TBA	C	505	-	16,16,16	0.90	0	18,18,18	0.56	0
7	DGA	C	506	-	30,30,43	1.39	3 (10%)	32,32,45	1.25	2 (6%)

In the following table, the Chirals column lists the number of chiral outliers, the number of chiral centers analysed, the number of these observed in the model and the number defined in the Chemical Component Dictionary. Similar counts are reported in the Torsion and Rings columns. '-' means no outliers of that kind were identified.

Mol	Type	Chain	Res	Link	Chirals	Torsions	Rings
4	F09	A	301	-	-	5/7/7/7	-
6	TBA	C	505	-	-	6/20/20/20	-
7	DGA	C	506	-	-	18/32/32/45	-

All (3) bond length outliers are listed below:

Mol	Chain	Res	Type	Atoms	Z	Observed(Å)	Ideal(Å)
7	C	506	DGA	OG1-CA1	3.62	1.43	1.33
7	C	506	DGA	OG2-CB1	2.98	1.42	1.34
7	C	506	DGA	OG2-CG2	-2.71	1.39	1.46

All (2) bond angle outliers are listed below:

Mol	Chain	Res	Type	Atoms	Z	Observed(°)	Ideal(°)
7	C	506	DGA	OG2-CB1-CB2	4.06	120.25	111.50
7	C	506	DGA	OG1-CA1-CA2	2.57	119.98	111.91

There are no chirality outliers.

All (29) torsion outliers are listed below:

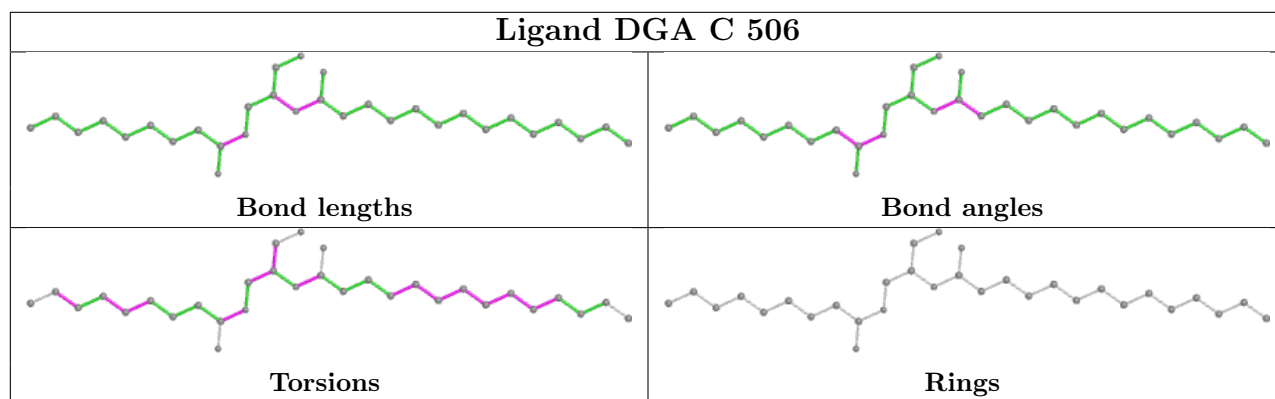
Mol	Chain	Res	Type	Atoms
7	C	506	DGA	OB1-CB1-OG2-CG2
7	C	506	DGA	OG1-CG1-CG2-OG2
7	C	506	DGA	OG2-CG2-CG3-OXT
7	C	506	DGA	CB2-CB1-OG2-CG2
7	C	506	DGA	CB6-CB7-CB8-CB9
6	C	505	TBA	N1-C11-C12-C13
7	C	506	DGA	CBB-CAB-CB9-CB8
4	A	301	F09	C3-C4-C5-C6
7	C	506	DGA	CB9-CAB-CBB-CCB
7	C	506	DGA	CA4-CA5-CA6-CA7
7	C	506	DGA	CB7-CB8-CB9-CAB
4	A	301	F09	C2-C3-C4-C5
7	C	506	DGA	CA2-CA1-OG1-CG1
6	C	505	TBA	C12-C11-N1-C41
4	A	301	F09	C6-C7-C8-C9
7	C	506	DGA	CB3-CB4-CB5-CB6
6	C	505	TBA	C12-C11-N1-C21
7	C	506	DGA	OA1-CA1-OG1-CG1
7	C	506	DGA	CA6-CA7-CA8-CA9
7	C	506	DGA	CB4-CB5-CB6-CB7
6	C	505	TBA	C12-C11-N1-C31
7	C	506	DGA	CG1-CG2-CG3-OXT
4	A	301	F09	C1-C2-C3-C4
7	C	506	DGA	OG1-CG1-CG2-CG3
6	C	505	TBA	C21-C22-C23-C24
6	C	505	TBA	C41-C42-C43-C44
7	C	506	DGA	CA3-CA4-CA5-CA6
4	A	301	F09	C5-C6-C7-C8
7	C	506	DGA	CB5-CB6-CB7-CB8

There are no ring outliers.

3 monomers are involved in 5 short contacts:

Mol	Chain	Res	Type	Clashes	Symm-Clashes
4	A	301	F09	1	0
6	C	505	TBA	2	0
7	C	506	DGA	2	0

The following is a two-dimensional graphical depiction of Mogul quality analysis of bond lengths, bond angles, torsion angles, and ring geometry for all instances of the Ligand of Interest. In addition, ligands with molecular weight > 250 and outliers as shown on the validation Tables will also be included. For torsion angles, if less than 5% of the Mogul distribution of torsion angles is within 10 degrees of the torsion angle in question, then that torsion angle is considered an outlier. Any bond that is central to one or more torsion angles identified as an outlier by Mogul will be highlighted in the graph. For rings, the root-mean-square deviation (RMSD) between the ring in question and similar rings identified by Mogul is calculated over all ring torsion angles. If the average RMSD is greater than 60 degrees and the minimal RMSD between the ring in question and any Mogul-identified rings is also greater than 60 degrees, then that ring is considered an outlier. The outliers are highlighted in purple. The color gray indicates Mogul did not find sufficient equivalents in the CSD to analyse the geometry.



5.7 Other polymers [\(i\)](#)

There are no such residues in this entry.

5.8 Polymer linkage issues [\(i\)](#)

There are no chain breaks in this entry.

6 Fit of model and data

6.1 Protein, DNA and RNA chains

In the following table, the column labelled ‘#RSRZ > 2’ contains the number (and percentage) of RSRZ outliers, followed by percent RSRZ outliers for the chain as percentile scores relative to all X-ray entries and entries of similar resolution. The OWAB column contains the minimum, median, 95th percentile and maximum values of the occupancy-weighted average B-factor per residue. The column labelled ‘Q < 0.9’ lists the number of (and percentage) of residues with an average occupancy less than 0.9.

Mol	Chain	Analysed	<RSRZ>	#RSRZ>2	OWAB(Å ²)	Q<0.9
1	A	219/219 (100%)	0.68	23 (10%) 6 5	37, 63, 79, 85	0
2	B	212/212 (100%)	0.76	16 (7%) 14 13	31, 58, 83, 93	1 (0%)
3	C	103/103 (100%)	0.24	0 100 100	28, 35, 52, 58	0
All	All	534/534 (100%)	0.63	39 (7%) 15 14	28, 57, 79, 93	1 (0%)

All (39) RSRZ outliers are listed below:

Mol	Chain	Res	Type	RSRZ
2	B	179	LEU	4.4
2	B	180	THR	4.2
1	A	67	LYS	4.0
2	B	181	LEU	4.0
1	A	86	LEU	3.9
1	A	146	LEU	3.9
1	A	126	VAL	3.7
1	A	131	PRO	3.7
2	B	132	VAL	3.7
1	A	175	LEU	3.5
1	A	129	LEU	3.4
2	B	125	LEU	3.4
2	B	159	VAL	3.3
1	A	210	LYS	3.2
1	A	18	VAL	3.1
1	A	83	LEU	3.0
2	B	209	PHE	2.9
1	A	24	ALA	2.9
1	A	199	THR	2.9
2	B	210	ASN	2.8
1	A	198	VAL	2.7
1	A	82	GLN	2.7
1	A	214	LYS	2.6

Continued on next page...

Continued from previous page...

Mol	Chain	Res	Type	RSRZ
2	B	133	VAL	2.6
1	A	1	GLN	2.6
1	A	55	TYR	2.5
1	A	176	GLN	2.5
2	B	128	GLY	2.4
2	B	130	ALA	2.4
1	A	202	VAL	2.3
1	A	112	THR	2.2
1	A	80	PHE	2.2
2	B	212	ASN	2.2
2	B	124	GLN	2.2
1	A	157	VAL	2.2
2	B	120	PRO	2.1
2	B	158	GLY	2.1
1	A	116	VAL	2.1
2	B	12	SER	2.0

6.2 Non-standard residues in protein, DNA, RNA chains [i](#)

There are no non-standard protein/DNA/RNA residues in this entry.

6.3 Carbohydrates [i](#)

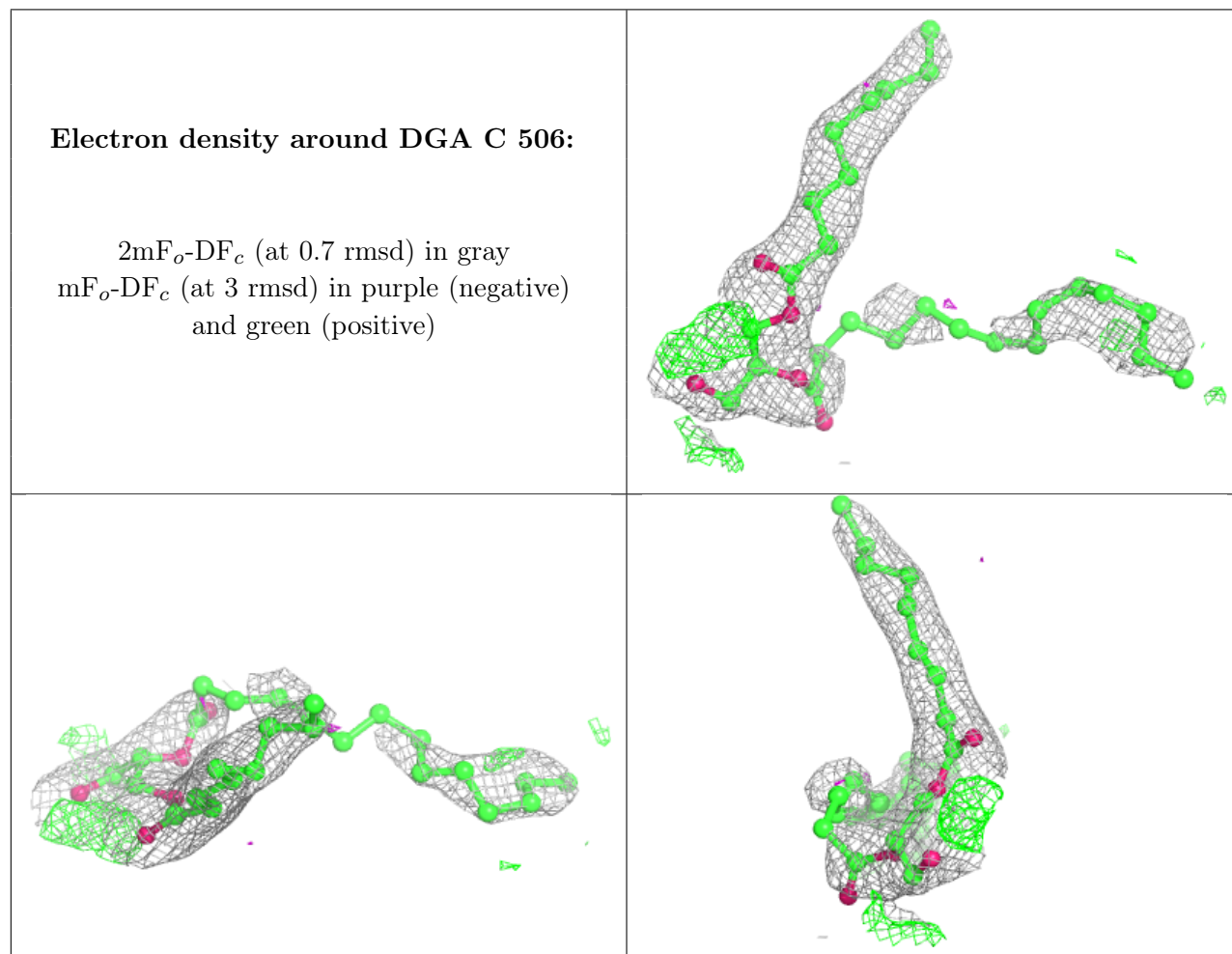
There are no monosaccharides in this entry.

6.4 Ligands [i](#)

In the following table, the Atoms column lists the number of modelled atoms in the group and the number defined in the chemical component dictionary. The B-factors column lists the minimum, median, 95th percentile and maximum values of B factors of atoms in the group. The column labelled 'Q< 0.9' lists the number of atoms with occupancy less than 0.9.

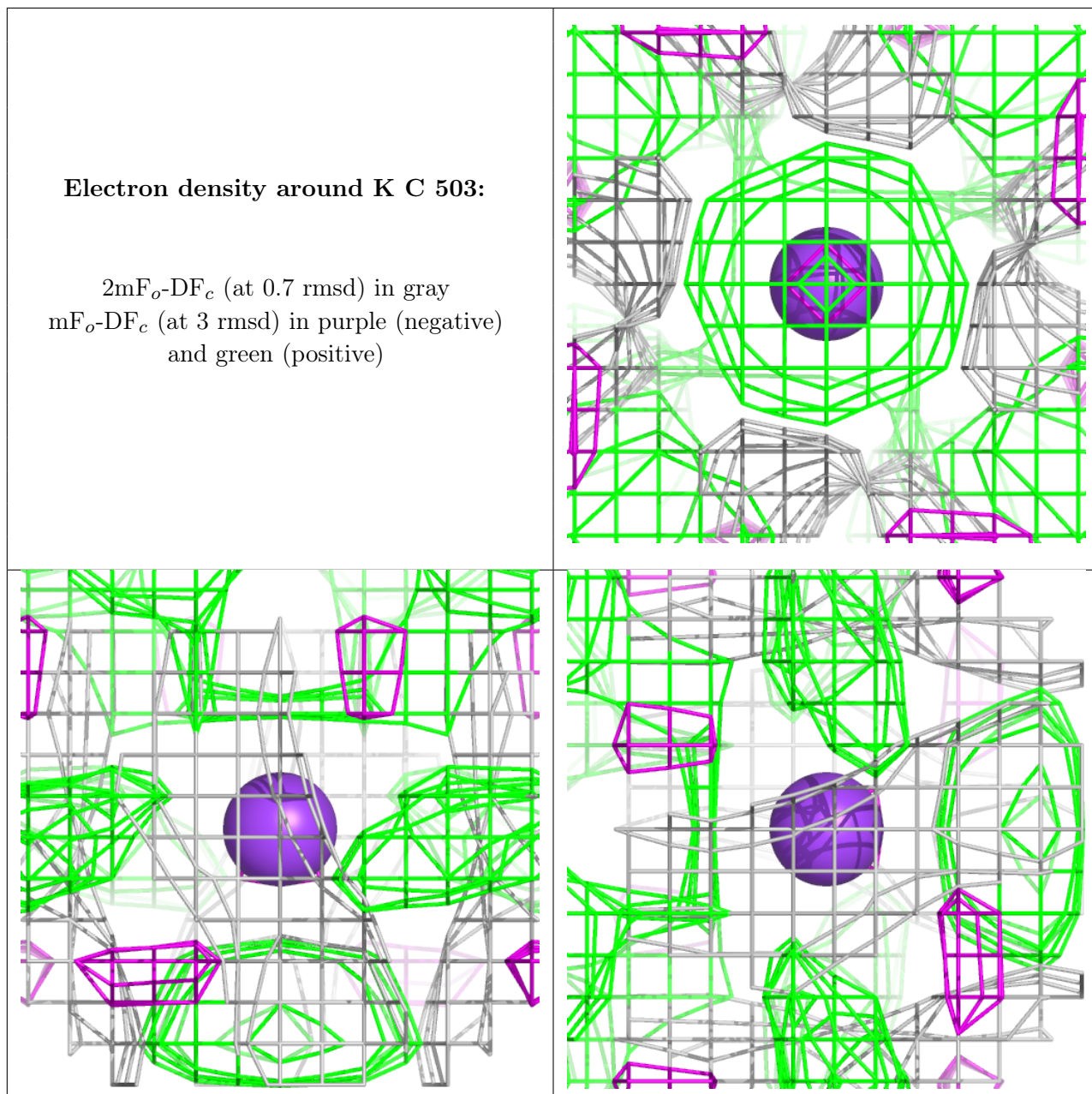
Mol	Type	Chain	Res	Atoms	RSCC	RSR	B-factors(Å ²)	Q<0.9
4	F09	A	301	10/10	0.79	0.47	42,52,55,60	0
7	DGA	C	506	31/44	0.80	0.35	36,54,65,69	0
5	K	C	503	1/1	0.84	0.14	35,35,35,35	1
5	K	C	502	1/1	0.91	0.17	36,36,36,36	1
5	K	C	501	1/1	0.93	0.12	32,32,32,32	1
6	TBA	C	505	17/17	0.96	0.27	29,30,31,31	17
5	K	C	504	1/1	0.97	0.18	29,29,29,29	1

The following is a graphical depiction of the model fit to experimental electron density of all instances of the Ligand of Interest. In addition, ligands with molecular weight > 250 and outliers as shown on the geometry validation Tables will also be included. Each fit is shown from different orientation to approximate a three-dimensional view.



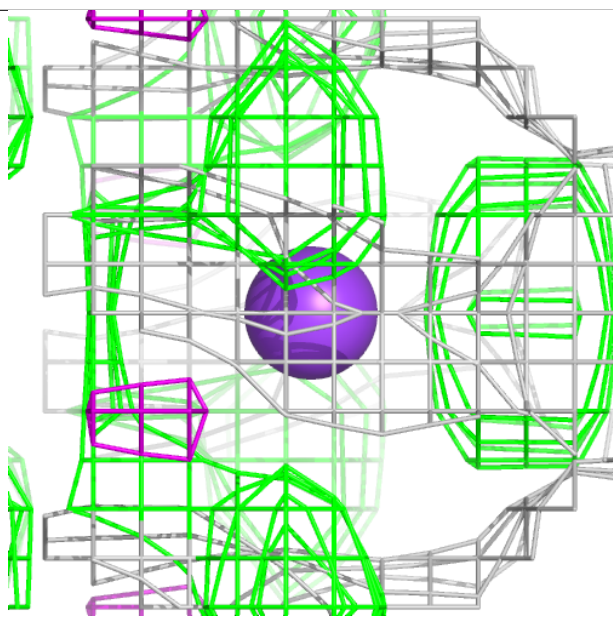
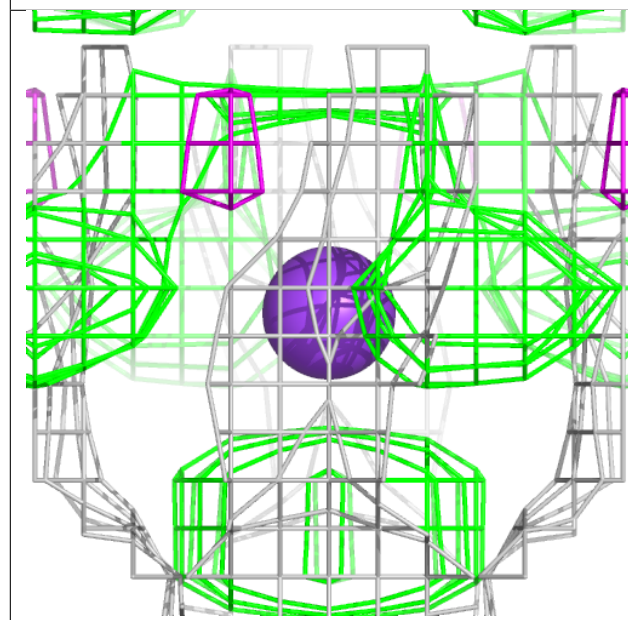
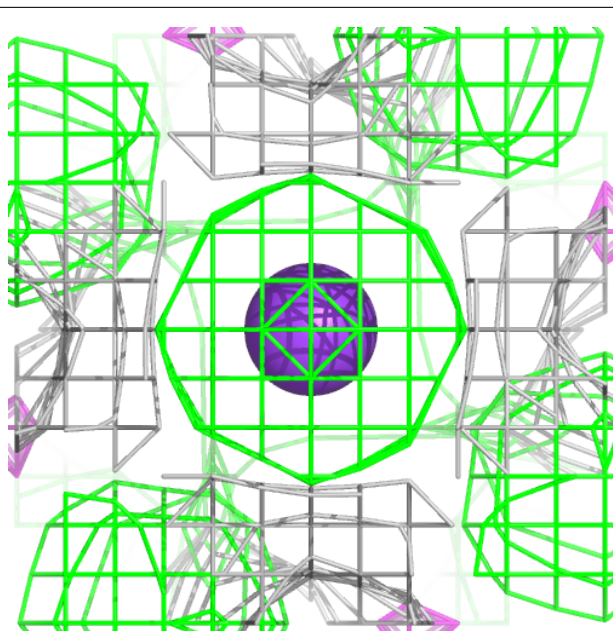
Electron density around K C 503:

$2mF_o-DF_c$ (at 0.7 rmsd) in gray
 mF_o-DF_c (at 3 rmsd) in purple (negative)
and green (positive)



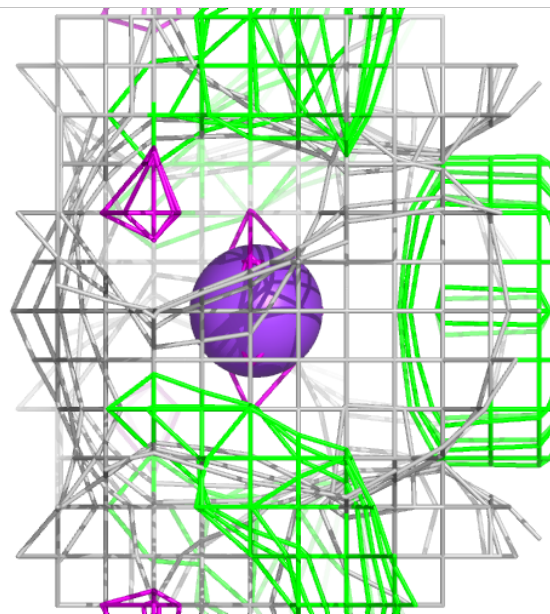
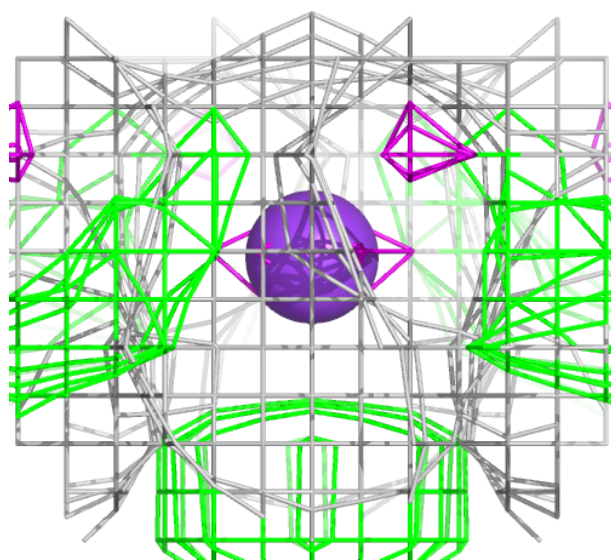
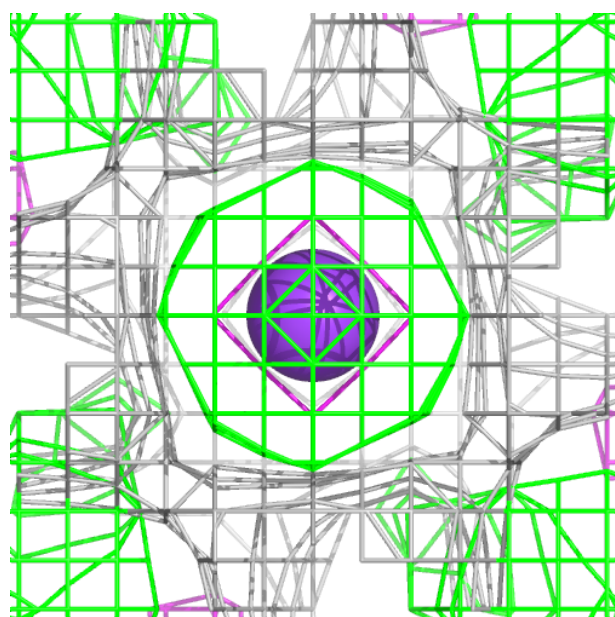
Electron density around K C 502:

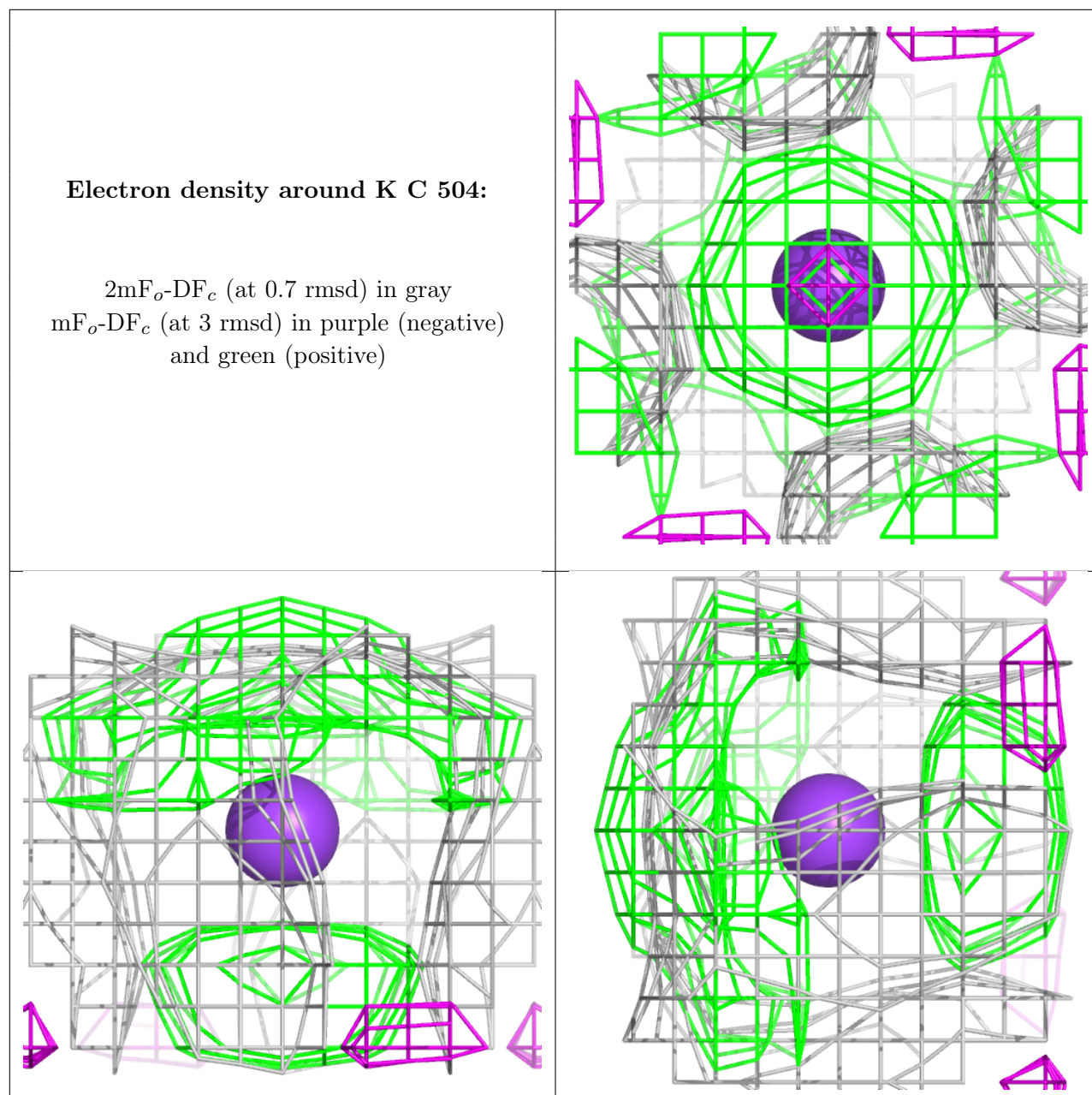
$2mF_o-DF_c$ (at 0.7 rmsd) in gray
 mF_o-DF_c (at 3 rmsd) in purple (negative)
and green (positive)



Electron density around K C 501:

$2mF_o-DF_c$ (at 0.7 rmsd) in gray
 mF_o-DF_c (at 3 rmsd) in purple (negative)
and green (positive)





6.5 Other polymers [i](#)

There are no such residues in this entry.