



Full wwPDB EM Validation Report ⓘ

Nov 21, 2022 – 04:29 AM EST

PDB ID : 7RPJ
EMDB ID : EMD-24616
Title : Cryo-EM structure of murine Dispatched NNN mutant
Authors : Asarnow, D.; Wang, Q.; Ding, K.; Cheng, Y.; Beachy, P.A.
Deposited on : 2021-08-03
Resolution : 3.20 Å (reported)

This is a Full wwPDB EM Validation Report for a publicly released PDB entry.

We welcome your comments at validation@mail.wwpdb.org

A user guide is available at

<https://www.wwpdb.org/validation/2017/EMValidationReportHelp>

with specific help available everywhere you see the ⓘ symbol.

The types of validation reports are described at

<http://www.wwpdb.org/validation/2017/FAQs#types>.

The following versions of software and data (see [references ⓘ](#)) were used in the production of this report:

EMDB validation analysis : 0.0.1.dev43
Mogul : 1.8.5 (274361), CSD as541be (2020)
MolProbity : 4.02b-467
buster-report : 1.1.7 (2018)
Percentile statistics : 20191225.v01 (using entries in the PDB archive December 25th 2019)
MapQ : 1.9.9
Ideal geometry (proteins) : Engh & Huber (2001)
Ideal geometry (DNA, RNA) : Parkinson et al. (1996)
Validation Pipeline (wwPDB-VP) : 2.31.3

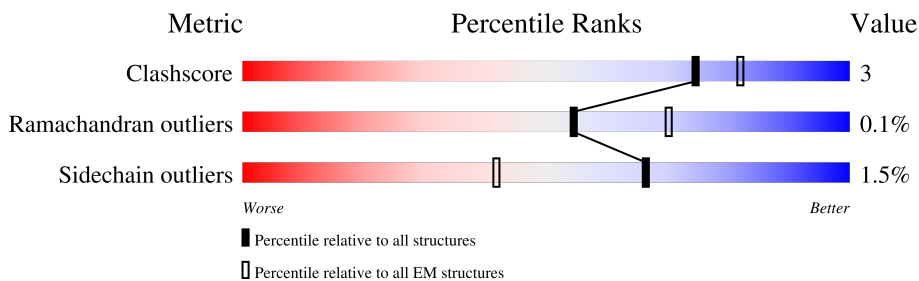
1 Overall quality at a glance

The following experimental techniques were used to determine the structure:

ELECTRON MICROSCOPY

The reported resolution of this entry is 3.20 Å.

Percentile scores (ranging between 0-100) for global validation metrics of the entry are shown in the following graphic. The table shows the number of entries on which the scores are based.



Metric	Whole archive (#Entries)	EM structures (#Entries)
Clashscore	158937	4297
Ramachandran outliers	154571	4023
Sidechain outliers	154315	3826

The table below summarises the geometric issues observed across the polymeric chains and their fit to the map. The red, orange, yellow and green segments of the bar indicate the fraction of residues that contain outliers for ≥ 3 , 2, 1 and 0 types of geometric quality criteria respectively. A grey segment represents the fraction of residues that are not modelled. The numeric value for each fraction is indicated below the corresponding segment, with a dot representing fractions $\leq 5\%$. The upper red bar (where present) indicates the fraction of residues that have poor fit to the EM map (all-atom inclusion $< 40\%$). The numeric value is given above the bar.

Mol	Chain	Length	Quality of chain
1	A	1352	

2 Entry composition i

There are 3 unique types of molecules in this entry. The entry contains 7926 atoms, of which 0 are hydrogens and 0 are deuteriums.

In the tables below, the AltConf column contains the number of residues with at least one atom in alternate conformation and the Trace column contains the number of residues modelled with at most 2 atoms.

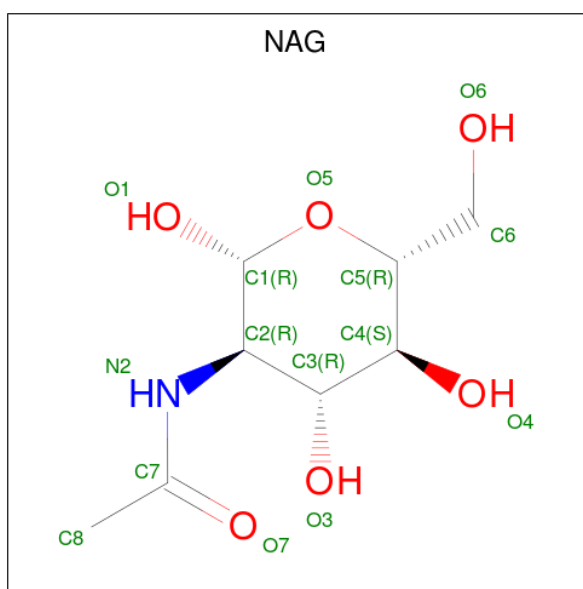
- Molecule 1 is a protein called Protein dispatched homolog 1.

Mol	Chain	Residues	Atoms					AltConf	Trace
			Total	C	N	O	S		
1	A	926	7366	4803	1183	1316	64	1	0

There are 5 discrepancies between the modelled and reference sequences:

Chain	Residue	Modelled	Actual	Comment	Reference
A	170	MET	-	expression tag	UNP Q3TDN0
A	171	ALA	-	expression tag	UNP Q3TDN0
A	571	ASN	ASP	engineered mutation	UNP Q3TDN0
A	572	ASN	ASP	engineered mutation	UNP Q3TDN0
A	1049	ASN	ASP	engineered mutation	UNP Q3TDN0

- Molecule 2 is 2-acetamido-2-deoxy-beta-D-glucopyranose (three-letter code: NAG) (formula: $C_8H_{15}NO_6$).



Mol	Chain	Residues	Atoms				AltConf
			Total	C	N	O	
2	A	1	70	40	5	25	0

Continued on next page...

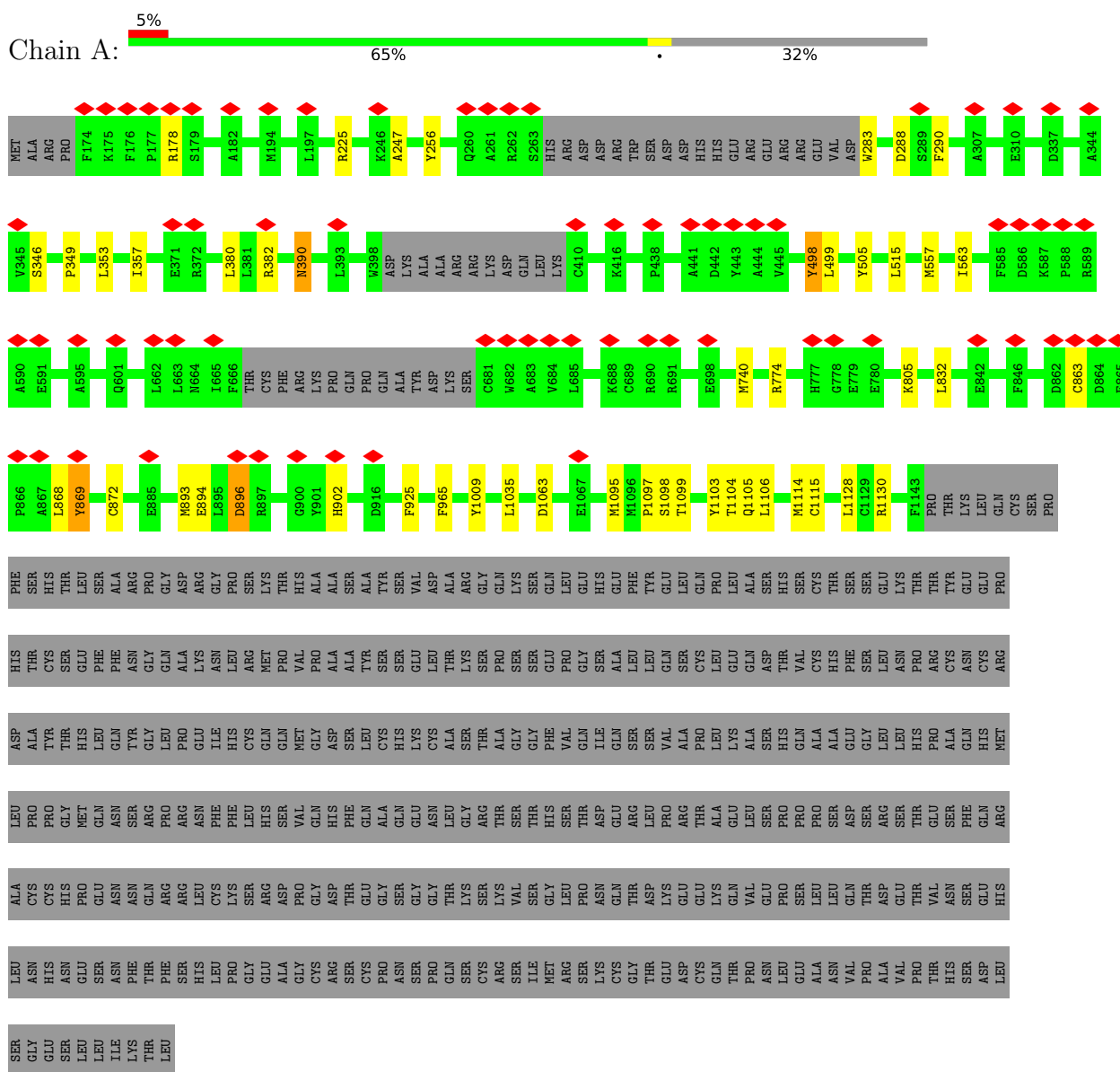
Continued from previous page...

Mol	Chain	Residues	Atoms			AltConf
3	A	1	Total 490	C 434	O 56	0
3	A	1	Total 490	C 434	O 56	0
3	A	1	Total 490	C 434	O 56	0
3	A	1	Total 490	C 434	O 56	0
3	A	1	Total 490	C 434	O 56	0
3	A	1	Total 490	C 434	O 56	0
3	A	1	Total 490	C 434	O 56	0

3 Residue-property plots

These plots are drawn for all protein, RNA, DNA and oligosaccharide chains in the entry. The first graphic for a chain summarises the proportions of the various outlier classes displayed in the second graphic. The second graphic shows the sequence view annotated by issues in geometry and atom inclusion in map density. Residues are color-coded according to the number of geometric quality criteria for which they contain at least one outlier: green = 0, yellow = 1, orange = 2 and red = 3 or more. A red diamond above a residue indicates a poor fit to the EM map for this residue (all-atom inclusion < 40%). Stretches of 2 or more consecutive residues without any outlier are shown as a green connector. Residues present in the sample, but not in the model, are shown in grey.

• Molecule 1: Protein dispatched homolog 1



4 Experimental information

Property	Value	Source
EM reconstruction method	SINGLE PARTICLE	Depositor
Imposed symmetry	POINT, C1	Depositor
Number of particles used	55982	Depositor
Resolution determination method	FSC 0.143 CUT-OFF	Depositor
CTF correction method	PHASE FLIPPING AND AMPLITUDE CORRECTION	Depositor
Microscope	FEI TITAN KRIOS	Depositor
Voltage (kV)	300	Depositor
Electron dose ($e^-/\text{\AA}^2$)	65.5	Depositor
Minimum defocus (nm)	500	Depositor
Maximum defocus (nm)	1500	Depositor
Magnification	59880	Depositor
Image detector	GATAN K3 BIOQUANTUM (6k x 4k)	Depositor
Maximum map value	20.326	Depositor
Minimum map value	-11.060	Depositor
Average map value	-0.136	Depositor
Map value standard deviation	0.580	Depositor
Recommended contour level	3.5	Depositor
Map size (Å)	240.192, 240.192, 240.192	wwPDB
Map dimensions	288, 288, 288	wwPDB
Map angles (°)	90.0, 90.0, 90.0	wwPDB
Pixel spacing (Å)	0.834, 0.834, 0.834	Depositor

5 Model quality [i](#)

5.1 Standard geometry [i](#)

Bond lengths and bond angles in the following residue types are not validated in this section: NAG, Y01

The Z score for a bond length (or angle) is the number of standard deviations the observed value is removed from the expected value. A bond length (or angle) with $|Z| > 5$ is considered an outlier worth inspection. RMSZ is the root-mean-square of all Z scores of the bond lengths (or angles).

Mol	Chain	Bond lengths		Bond angles	
		RMSZ	# Z >5	RMSZ	# Z >5
1	A	0.64	0/7564	0.93	0/10291

There are no bond length outliers.

There are no bond angle outliers.

There are no chirality outliers.

There are no planarity outliers.

5.2 Too-close contacts [i](#)

In the following table, the Non-H and H(model) columns list the number of non-hydrogen atoms and hydrogen atoms in the chain respectively. The H(added) column lists the number of hydrogen atoms added and optimized by MolProbity. The Clashes column lists the number of clashes within the asymmetric unit, whereas Symm-Clashes lists symmetry-related clashes.

Mol	Chain	Non-H	H(model)	H(added)	Clashes	Symm-Clashes
1	A	7366	0	7283	44	0
2	A	70	0	65	4	0
3	A	490	0	686	8	0
All	All	7926	0	8034	51	0

The all-atom clashscore is defined as the number of clashes found per 1000 atoms (including hydrogen atoms). The all-atom clashscore for this structure is 3.

All (51) close contacts within the same asymmetric unit are listed below, sorted by their clash magnitude.

Atom-1	Atom-2	Interatomic distance (Å)	Clash overlap (Å)
1:A:390:ASN:ND2	2:A:1604:NAG:C1	1.72	1.52

Continued on next page...

Continued from previous page...

Atom-1	Atom-2	Interatomic distance (Å)	Clash overlap (Å)
1:A:1095:MET:HE1	1:A:1103:TYR:HD2	1.24	1.03
1:A:1095:MET:CE	1:A:1103:TYR:HD2	1.77	0.96
1:A:499:LEU:CD1	1:A:1103:TYR:HE1	1.77	0.96
1:A:499:LEU:HD11	1:A:1103:TYR:HE1	1.29	0.93
1:A:225:ARG:NH2	1:A:805:LYS:HE3	1.87	0.88
1:A:1095:MET:HE1	1:A:1103:TYR:CD2	2.10	0.86
1:A:499:LEU:HD11	1:A:1103:TYR:CE1	2.11	0.85
1:A:499:LEU:CD1	1:A:1103:TYR:CE1	2.60	0.85
1:A:498:TYR:HE2	1:A:1099:THR:HG21	1.53	0.72
1:A:390:ASN:HD22	2:A:1604:NAG:C1	2.01	0.71
1:A:1095:MET:CE	1:A:1103:TYR:CD2	2.69	0.69
1:A:832:LEU:HD21	1:A:925:PHE:CD2	2.28	0.69
1:A:869:TYR:HA	1:A:872:CYS:SG	2.35	0.67
1:A:256:TYR:CE1	1:A:893:MET:SD	2.89	0.66
1:A:832:LEU:HD23	1:A:925:PHE:CE2	2.33	0.64
1:A:256:TYR:HE1	1:A:893:MET:SD	2.22	0.63
1:A:390:ASN:ND2	2:A:1604:NAG:C2	2.60	0.61
1:A:832:LEU:CD2	1:A:925:PHE:CD2	2.85	0.59
1:A:498:TYR:CE2	1:A:1099:THR:HG21	2.36	0.59
1:A:832:LEU:CD2	1:A:925:PHE:CE2	2.86	0.57
1:A:1130:ARG:O	1:A:1130:ARG:HD2	2.04	0.57
1:A:863:CYS:SG	1:A:868:LEU:O	2.64	0.56
1:A:894:GLU:HA	1:A:894:GLU:OE1	2.07	0.54
3:A:1610:Y01:HAU2	3:A:1610:Y01:HAC1	1.91	0.52
1:A:256:TYR:HE1	1:A:893:MET:CE	2.23	0.51
1:A:1098:SER:OG	1:A:1104:THR:HG22	2.10	0.51
1:A:1009:TYR:CD1	1:A:1128:LEU:HD23	2.47	0.50
1:A:1115:CYS:SG	3:A:1612:Y01:HAO1	2.53	0.49
3:A:1613:Y01:HAC1	3:A:1613:Y01:HAU2	1.94	0.49
1:A:896:ASP:OD1	1:A:902:HIS:NE2	2.46	0.49
1:A:225:ARG:HH22	1:A:805:LYS:HE3	1.75	0.48
1:A:499:LEU:HD12	1:A:1103:TYR:CE1	2.45	0.48
1:A:353:LEU:O	1:A:357:ILE:HG22	2.14	0.47
3:A:1606:Y01:HAC1	3:A:1606:Y01:HAU2	1.98	0.46
1:A:256:TYR:CD1	1:A:893:MET:SD	3.10	0.45
1:A:283:TRP:N	1:A:346:SER:HG	2.14	0.45
1:A:283:TRP:CD2	1:A:349:PRO:HD3	2.52	0.45
1:A:390:ASN:ND2	2:A:1604:NAG:O5	2.44	0.43
3:A:1612:Y01:HAC1	3:A:1612:Y01:HAU2	2.00	0.43
1:A:178:ARG:O	1:A:178:ARG:HG3	2.18	0.43
3:A:1615:Y01:HAU2	3:A:1615:Y01:HAC1	2.00	0.43

Continued on next page...

Continued from previous page...

Atom-1	Atom-2	Interatomic distance (Å)	Clash overlap (Å)
1:A:1114:MET:CE	1:A:1114:MET:HA	2.45	0.42
1:A:288:ASP:HA	1:A:290:PHE:CZ	2.54	0.42
3:A:1616:Y01:HAC1	3:A:1616:Y01:HAU2	2.01	0.42
1:A:505:TYR:CD1	1:A:1097:PRO:HG2	2.55	0.41
1:A:896:ASP:OD1	1:A:902:HIS:CD2	2.73	0.41
3:A:1611:Y01:HAC1	3:A:1611:Y01:HAU2	2.01	0.41
1:A:563:ILE:HD12	1:A:563:ILE:H	1.87	0.40
1:A:557:MET:SD	1:A:1035[B]:LEU:HD12	2.62	0.40
1:A:1035[B]:LEU:HD23	1:A:1105:GLN:OE1	2.21	0.40

There are no symmetry-related clashes.

5.3 Torsion angles [i](#)

5.3.1 Protein backbone [i](#)

In the following table, the Percentiles column shows the percent Ramachandran outliers of the chain as a percentile score with respect to all PDB entries followed by that with respect to all EM entries.

The Analysed column shows the number of residues for which the backbone conformation was analysed, and the total number of residues.

Mol	Chain	Analysed	Favoured	Allowed	Outliers	Percentiles
1	A	919/1352 (68%)	877 (95%)	41 (4%)	1 (0%)	51 83

All (1) Ramachandran outliers are listed below:

Mol	Chain	Res	Type
1	A	247	ALA

5.3.2 Protein sidechains [i](#)

In the following table, the Percentiles column shows the percent sidechain outliers of the chain as a percentile score with respect to all PDB entries followed by that with respect to all EM entries.

The Analysed column shows the number of residues for which the sidechain conformation was analysed, and the total number of residues.

Mol	Chain	Analysed	Rotameric	Outliers	Percentiles
1	A	814/1190 (68%)	802 (98%)	12 (2%)	65 85

All (12) residues with a non-rotameric sidechain are listed below:

Mol	Chain	Res	Type
1	A	380	LEU
1	A	382	ARG
1	A	390	ASN
1	A	498	TYR
1	A	515	LEU
1	A	740	MET
1	A	774	ARG
1	A	869	TYR
1	A	896	ASP
1	A	965	PHE
1	A	1063	ASP
1	A	1106	LEU

Sometimes sidechains can be flipped to improve hydrogen bonding and reduce clashes. All (1) such sidechains are listed below:

Mol	Chain	Res	Type
1	A	939	GLN

5.3.3 RNA [i](#)

There are no RNA molecules in this entry.

5.4 Non-standard residues in protein, DNA, RNA chains [i](#)

There are no non-standard protein/DNA/RNA residues in this entry.

5.5 Carbohydrates [i](#)

There are no monosaccharides in this entry.

5.6 Ligand geometry [i](#)

19 ligands are modelled in this entry.

In the following table, the Counts columns list the number of bonds (or angles) for which Mogul statistics could be retrieved, the number of bonds (or angles) that are observed in the model and the number of bonds (or angles) that are defined in the Chemical Component Dictionary. The Link column lists molecule types, if any, to which the group is linked. The Z score for a bond length (or angle) is the number of standard deviations the observed value is removed from the expected value. A bond length (or angle) with $|Z| > 2$ is considered an outlier worth inspection. RMSZ is the root-mean-square of all Z scores of the bond lengths (or angles).

Mol	Type	Chain	Res	Link	Bond lengths			Bond angles		
					Counts	RMSZ	# $ Z > 2$	Counts	RMSZ	# $ Z > 2$
3	Y01	A	1607	-	38,38,38	1.09	3 (7%)	57,57,57	0.86	2 (3%)
3	Y01	A	1616	-	38,38,38	1.09	2 (5%)	57,57,57	0.69	2 (3%)
3	Y01	A	1606	-	38,38,38	1.20	3 (7%)	57,57,57	1.14	5 (8%)
3	Y01	A	1619	-	38,38,38	1.17	2 (5%)	57,57,57	0.74	2 (3%)
3	Y01	A	1613	-	38,38,38	1.18	4 (10%)	57,57,57	1.46	7 (12%)
2	NAG	A	1604	-	14,14,15	1.26	2 (14%)	17,19,21	0.73	0
3	Y01	A	1615	-	38,38,38	1.12	2 (5%)	57,57,57	0.73	1 (1%)
2	NAG	A	1605	1	14,14,15	1.28	1 (7%)	17,19,21	1.12	1 (5%)
3	Y01	A	1608	-	38,38,38	1.13	4 (10%)	57,57,57	1.23	6 (10%)
2	NAG	A	1603	1	14,14,15	1.17	1 (7%)	17,19,21	0.99	1 (5%)
3	Y01	A	1610	-	38,38,38	1.02	1 (2%)	57,57,57	0.61	0
3	Y01	A	1612	-	38,38,38	0.97	2 (5%)	57,57,57	0.78	1 (1%)
3	Y01	A	1609	-	38,38,38	1.18	2 (5%)	57,57,57	1.07	4 (7%)
3	Y01	A	1611	-	38,38,38	1.25	3 (7%)	57,57,57	0.97	2 (3%)
3	Y01	A	1614	-	38,38,38	1.12	2 (5%)	57,57,57	0.90	1 (1%)
2	NAG	A	1601	1	14,14,15	1.10	2 (14%)	17,19,21	0.97	1 (5%)
3	Y01	A	1617	-	38,38,38	1.05	2 (5%)	57,57,57	0.75	2 (3%)
2	NAG	A	1602	1	14,14,15	1.16	2 (14%)	17,19,21	0.76	1 (5%)
3	Y01	A	1618	-	38,38,38	1.27	4 (10%)	57,57,57	1.08	4 (7%)

In the following table, the Chirals column lists the number of chiral outliers, the number of chiral centers analysed, the number of these observed in the model and the number defined in the Chemical Component Dictionary. Similar counts are reported in the Torsion and Rings columns. '-' means no outliers of that kind were identified.

Mol	Type	Chain	Res	Link	Chirals	Torsions	Rings
3	Y01	A	1607	-	-	2/19/77/77	0/4/4/4
3	Y01	A	1616	-	-	7/19/77/77	0/4/4/4
3	Y01	A	1606	-	-	5/19/77/77	0/4/4/4
3	Y01	A	1619	-	-	10/19/77/77	0/4/4/4

Continued on next page...

Continued from previous page...

Mol	Type	Chain	Res	Link	Chirals	Torsions	Rings
3	Y01	A	1613	-	-	10/19/77/77	0/4/4/4
2	NAG	A	1604	-	-	0/6/23/26	0/1/1/1
3	Y01	A	1615	-	-	6/19/77/77	0/4/4/4
2	NAG	A	1605	1	-	2/6/23/26	0/1/1/1
3	Y01	A	1608	-	-	7/19/77/77	0/4/4/4
2	NAG	A	1603	1	-	2/6/23/26	0/1/1/1
3	Y01	A	1610	-	-	4/19/77/77	0/4/4/4
3	Y01	A	1612	-	-	6/19/77/77	0/4/4/4
3	Y01	A	1609	-	-	11/19/77/77	0/4/4/4
3	Y01	A	1611	-	-	5/19/77/77	0/4/4/4
3	Y01	A	1614	-	-	4/19/77/77	0/4/4/4
2	NAG	A	1601	1	-	2/6/23/26	0/1/1/1
3	Y01	A	1617	-	-	7/19/77/77	0/4/4/4
2	NAG	A	1602	1	-	1/6/23/26	0/1/1/1
3	Y01	A	1618	-	-	11/19/77/77	0/4/4/4

All (44) bond length outliers are listed below:

Mol	Chain	Res	Type	Atoms	Z	Observed(Å)	Ideal(Å)
3	A	1609	Y01	OAH-CAX	-3.34	1.19	1.30
2	A	1605	NAG	O5-C5	2.86	1.49	1.43
3	A	1611	Y01	CAS-CBF	2.85	1.58	1.53
3	A	1618	Y01	CBB-CBE	2.84	1.59	1.54
2	A	1604	NAG	O5-C5	2.76	1.49	1.43
3	A	1618	Y01	CAS-CBF	2.71	1.58	1.53
3	A	1614	Y01	CAS-CBF	2.71	1.58	1.53
3	A	1606	Y01	CAS-CBF	2.69	1.58	1.53
3	A	1607	Y01	CBB-CBE	2.69	1.59	1.54
3	A	1608	Y01	OAH-CAX	-2.67	1.21	1.30
2	A	1603	NAG	O5-C5	2.67	1.48	1.43
3	A	1619	Y01	OAH-CAX	-2.67	1.21	1.30
3	A	1611	Y01	OAH-CAX	-2.65	1.21	1.30
3	A	1616	Y01	OAH-CAX	-2.64	1.21	1.30
3	A	1619	Y01	CAS-CBF	2.64	1.58	1.53
3	A	1608	Y01	CAS-CBF	2.63	1.58	1.53
3	A	1614	Y01	OAH-CAX	-2.62	1.21	1.30
3	A	1610	Y01	OAH-CAX	-2.60	1.22	1.30
3	A	1612	Y01	OAH-CAX	-2.58	1.22	1.30
3	A	1607	Y01	OAH-CAX	-2.58	1.22	1.30

Continued on next page...

Continued from previous page...

Mol	Chain	Res	Type	Atoms	Z	Observed(Å)	Ideal(Å)
3	A	1606	Y01	OAH-CAX	-2.53	1.22	1.30
3	A	1613	Y01	OAH-CAX	-2.52	1.22	1.30
3	A	1615	Y01	OAH-CAX	-2.52	1.22	1.30
3	A	1618	Y01	OAH-CAX	-2.52	1.22	1.30
3	A	1617	Y01	OAH-CAX	-2.49	1.22	1.30
3	A	1608	Y01	CBB-CBE	2.48	1.58	1.54
3	A	1609	Y01	CAS-CBF	2.45	1.57	1.53
3	A	1615	Y01	CAS-CBF	2.41	1.57	1.53
3	A	1607	Y01	CAS-CBF	2.40	1.57	1.53
3	A	1613	Y01	CBB-CBE	2.32	1.58	1.54
2	A	1604	NAG	C1-C2	2.29	1.55	1.52
3	A	1613	Y01	CAS-CBF	2.28	1.57	1.53
3	A	1616	Y01	CAS-CBF	2.27	1.57	1.53
2	A	1602	NAG	O5-C5	2.27	1.48	1.43
3	A	1613	Y01	CAV-CBC	2.21	1.57	1.52
2	A	1602	NAG	C1-C2	2.21	1.55	1.52
3	A	1617	Y01	CAS-CBF	2.17	1.57	1.53
2	A	1601	NAG	C1-C2	2.15	1.55	1.52
2	A	1601	NAG	O5-C5	2.13	1.47	1.43
3	A	1611	Y01	CBB-CBE	2.12	1.58	1.54
3	A	1612	Y01	CAS-CBF	2.10	1.57	1.53
3	A	1608	Y01	CAE-CBI	2.07	1.57	1.54
3	A	1606	Y01	CAE-CBI	2.02	1.57	1.54
3	A	1618	Y01	CAE-CBI	2.01	1.57	1.54

All (43) bond angle outliers are listed below:

Mol	Chain	Res	Type	Atoms	Z	Observed(°)	Ideal(°)
3	A	1613	Y01	CBC-CAV-CAZ	4.66	118.76	111.52
3	A	1618	Y01	CAP-CBE-CBB	4.56	119.20	112.15
3	A	1613	Y01	CBC-OAW-CAY	4.51	128.88	117.79
3	A	1609	Y01	CAP-CBE-CBB	3.27	117.21	112.15
3	A	1608	Y01	CBC-OAW-CAY	3.20	125.68	117.79
3	A	1613	Y01	CAR-CBC-CAV	3.18	115.73	110.99
3	A	1608	Y01	CAS-CBF-CBD	3.17	116.33	111.75
3	A	1609	Y01	CBC-CAV-CAZ	3.11	116.36	111.52
3	A	1609	Y01	CAO-CBB-CBE	2.96	116.41	110.28
3	A	1613	Y01	OAW-CAY-CAM	2.89	117.72	111.50
3	A	1613	Y01	CAS-CBF-CBD	2.86	115.88	111.75
3	A	1618	Y01	CAO-CBB-CBE	2.77	116.01	110.28
3	A	1618	Y01	CBC-OAW-CAY	2.71	124.46	117.79
3	A	1608	Y01	CAO-CBB-CBE	2.70	115.86	110.28

Continued on next page...

Continued from previous page...

Mol	Chain	Res	Type	Atoms	Z	Observed(°)	Ideal(°)
3	A	1613	Y01	CAT-CAR-CBC	2.67	114.88	110.33
3	A	1606	Y01	CAS-CBF-CBD	2.63	115.55	111.75
3	A	1606	Y01	CAR-CBC-CAV	2.61	114.89	110.99
3	A	1616	Y01	OAW-CBC-CAV	2.59	113.42	108.12
3	A	1606	Y01	CBF-CBD-CBG	2.59	112.55	109.09
3	A	1619	Y01	CBC-OAW-CAY	2.55	124.06	117.79
3	A	1612	Y01	CBC-OAW-CAY	2.53	124.01	117.79
3	A	1608	Y01	CBG-CBI-CBE	2.50	103.03	100.07
3	A	1606	Y01	CBC-OAW-CAY	2.44	123.80	117.79
2	A	1605	NAG	C3-C4-C5	2.43	114.57	110.24
3	A	1614	Y01	CAS-CBF-CBD	2.34	115.13	111.75
3	A	1611	Y01	CAR-CBC-CAV	2.33	114.46	110.99
3	A	1606	Y01	CBH-CBF-CBD	-2.32	109.26	112.73
2	A	1603	NAG	O5-C5-C6	2.31	110.83	107.20
3	A	1611	Y01	CBC-OAW-CAY	2.29	123.43	117.79
3	A	1617	Y01	CBC-OAW-CAY	2.28	123.40	117.79
3	A	1607	Y01	CAS-CBF-CBD	2.26	115.01	111.75
3	A	1609	Y01	CAC-CBB-CBE	-2.25	109.47	112.92
3	A	1607	Y01	CBG-CBI-CBE	2.23	102.71	100.07
3	A	1618	Y01	CBI-CBE-CBB	-2.18	116.07	119.49
3	A	1619	Y01	OAW-CAY-CAM	2.16	116.16	111.50
2	A	1601	NAG	C1-C2-N2	2.13	114.13	110.49
2	A	1602	NAG	C1-O5-C5	2.12	115.06	112.19
3	A	1608	Y01	CBI-CBE-CBB	-2.12	116.17	119.49
3	A	1613	Y01	CAK-CBD-CBG	2.11	113.97	110.91
3	A	1608	Y01	OAW-CAY-CAM	2.10	116.02	111.50
3	A	1617	Y01	CAR-CBC-CAV	2.08	114.09	110.99
3	A	1615	Y01	CAS-CBF-CBD	2.05	114.71	111.75
3	A	1616	Y01	CBC-OAW-CAY	2.04	122.81	117.79

There are no chirality outliers.

All (102) torsion outliers are listed below:

Mol	Chain	Res	Type	Atoms
3	A	1608	Y01	OAG-CAY-OAW-CBC
3	A	1608	Y01	CAM-CAY-OAW-CBC
3	A	1611	Y01	OAG-CAY-OAW-CBC
3	A	1611	Y01	CAM-CAY-OAW-CBC
3	A	1613	Y01	OAG-CAY-OAW-CBC
3	A	1613	Y01	CAM-CAY-OAW-CBC
3	A	1614	Y01	OAG-CAY-OAW-CBC
3	A	1615	Y01	OAG-CAY-OAW-CBC

Continued on next page...

Continued from previous page...

Mol	Chain	Res	Type	Atoms
3	A	1615	Y01	CAM-CAY-OAW-CBC
3	A	1616	Y01	CAM-CAY-OAW-CBC
3	A	1618	Y01	OAG-CAY-OAW-CBC
3	A	1618	Y01	CAM-CAY-OAW-CBC
3	A	1619	Y01	OAG-CAY-OAW-CBC
3	A	1619	Y01	CAM-CAY-OAW-CBC
3	A	1618	Y01	CAC-CBB-CBE-CBI
3	A	1614	Y01	CAM-CAY-OAW-CBC
3	A	1618	Y01	CAC-CBB-CBE-CAP
3	A	1618	Y01	CAO-CBB-CBE-CBI
3	A	1618	Y01	CAO-CBB-CBE-CAP
3	A	1615	Y01	CAJ-CAO-CBB-CBE
3	A	1617	Y01	CAJ-CAO-CBB-CBE
3	A	1619	Y01	CAJ-CAO-CBB-CBE
2	A	1603	NAG	O5-C5-C6-O6
3	A	1615	Y01	CAJ-CAO-CBB-CAC
3	A	1616	Y01	CAJ-CAO-CBB-CBE
3	A	1609	Y01	CAO-CBB-CBE-CBI
2	A	1603	NAG	C4-C5-C6-O6
3	A	1616	Y01	CAJ-CAO-CBB-CAC
3	A	1617	Y01	CAJ-CAO-CBB-CAC
3	A	1619	Y01	CAJ-CAO-CBB-CAC
3	A	1608	Y01	CAN-CAJ-CAO-CBB
3	A	1609	Y01	CAC-CBB-CBE-CAP
3	A	1609	Y01	CAC-CBB-CBE-CBI
3	A	1609	Y01	CAJ-CAO-CBB-CBE
3	A	1612	Y01	CAR-CBC-OAW-CAY
3	A	1616	Y01	CAR-CBC-OAW-CAY
3	A	1609	Y01	CAJ-CAO-CBB-CAC
3	A	1617	Y01	CAR-CBC-OAW-CAY
3	A	1618	Y01	CAO-CAJ-CAN-CBA
3	A	1612	Y01	CAJ-CAN-CBA-CAA
3	A	1612	Y01	CAJ-CAN-CBA-CAB
3	A	1613	Y01	CAJ-CAN-CBA-CAA
3	A	1613	Y01	CAJ-CAN-CBA-CAB
3	A	1613	Y01	CAN-CAJ-CAO-CBB
3	A	1616	Y01	OAG-CAY-OAW-CBC
3	A	1606	Y01	CAV-CBC-OAW-CAY
3	A	1608	Y01	CAJ-CAN-CBA-CAA
3	A	1608	Y01	CAJ-CAN-CBA-CAB
2	A	1601	NAG	O5-C5-C6-O6
3	A	1619	Y01	CAV-CBC-OAW-CAY

Continued on next page...

Continued from previous page...

Mol	Chain	Res	Type	Atoms
3	A	1611	Y01	CAN-CAJ-CAO-CBB
3	A	1618	Y01	CAJ-CAO-CBB-CBE
3	A	1618	Y01	CAN-CAJ-CAO-CBB
3	A	1616	Y01	CAV-CBC-OAW-CAY
3	A	1609	Y01	CAV-CBC-OAW-CAY
3	A	1609	Y01	CAR-CBC-OAW-CAY
2	A	1605	NAG	C1-C2-N2-C7
3	A	1606	Y01	CAN-CAJ-CAO-CBB
3	A	1617	Y01	CAJ-CAN-CBA-CAA
3	A	1617	Y01	CAJ-CAN-CBA-CAB
2	A	1602	NAG	O5-C5-C6-O6
3	A	1619	Y01	CAR-CBC-OAW-CAY
2	A	1601	NAG	C3-C2-N2-C7
3	A	1610	Y01	CAJ-CAO-CBB-CAC
3	A	1611	Y01	CAM-CAL-CAX-OAH
3	A	1609	Y01	CAM-CAL-CAX-OAF
3	A	1611	Y01	CAM-CAL-CAX-OAF
3	A	1609	Y01	CAM-CAL-CAX-OAH
3	A	1615	Y01	CAM-CAL-CAX-OAF
3	A	1613	Y01	CAR-CBC-OAW-CAY
3	A	1606	Y01	CAM-CAL-CAX-OAH
3	A	1618	Y01	CAM-CAL-CAX-OAH
3	A	1606	Y01	CAR-CBC-OAW-CAY
3	A	1610	Y01	CAJ-CAO-CBB-CBE
3	A	1612	Y01	CAV-CBC-OAW-CAY
3	A	1618	Y01	CAM-CAL-CAX-OAF
3	A	1615	Y01	CAM-CAL-CAX-OAH
3	A	1616	Y01	CAM-CAL-CAX-OAH
3	A	1610	Y01	CAM-CAL-CAX-OAH
3	A	1610	Y01	CAM-CAL-CAX-OAF
3	A	1617	Y01	CAV-CBC-OAW-CAY
3	A	1606	Y01	CAM-CAL-CAX-OAF
3	A	1613	Y01	CAM-CAL-CAX-OAF
3	A	1614	Y01	CAM-CAL-CAX-OAF
3	A	1613	Y01	CAL-CAM-CAY-OAW
3	A	1607	Y01	CAM-CAL-CAX-OAH
3	A	1619	Y01	CAM-CAL-CAX-OAF
3	A	1619	Y01	CAM-CAL-CAX-OAH
3	A	1607	Y01	CAM-CAL-CAX-OAF
3	A	1612	Y01	CAM-CAL-CAX-OAH
3	A	1612	Y01	CAM-CAL-CAX-OAF
3	A	1613	Y01	CAM-CAL-CAX-OAH

Continued on next page...

Continued from previous page...

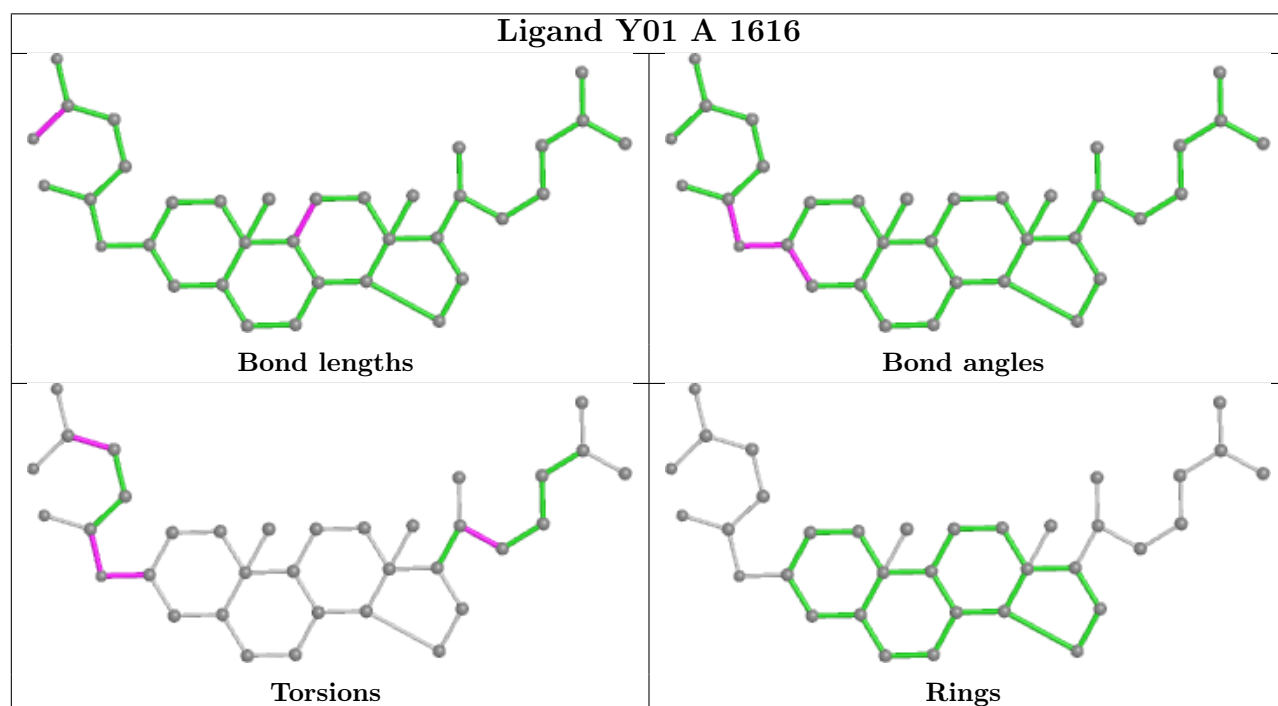
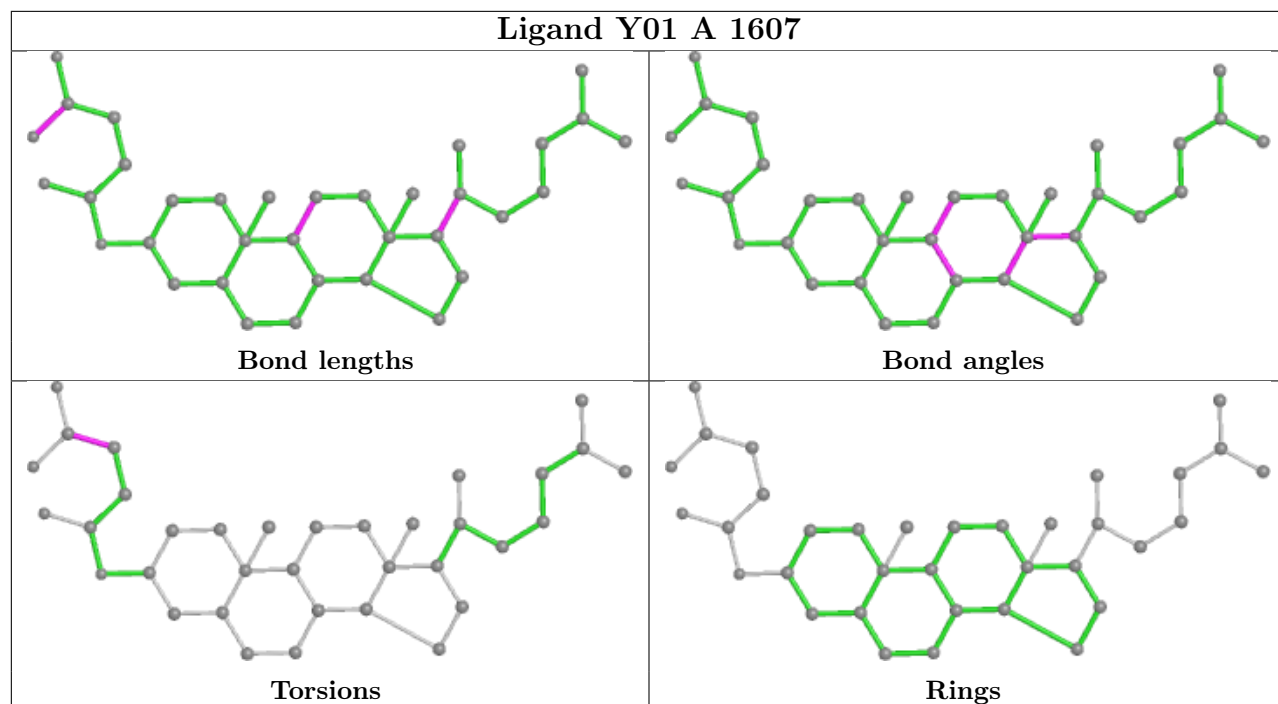
Mol	Chain	Res	Type	Atoms
3	A	1614	Y01	CAM-CAL-CAX-OAH
2	A	1605	NAG	C3-C2-N2-C7
3	A	1619	Y01	CAL-CAM-CAY-OAG
3	A	1613	Y01	CAL-CAM-CAY-OAG
3	A	1608	Y01	CAO-CAJ-CAN-CBA
3	A	1619	Y01	CAJ-CAN-CBA-CAB
3	A	1608	Y01	CAM-CAL-CAX-OAF
3	A	1609	Y01	CAL-CAM-CAY-OAW
3	A	1609	Y01	CAO-CBB-CBE-CAP
3	A	1617	Y01	CAN-CAJ-CAO-CBB

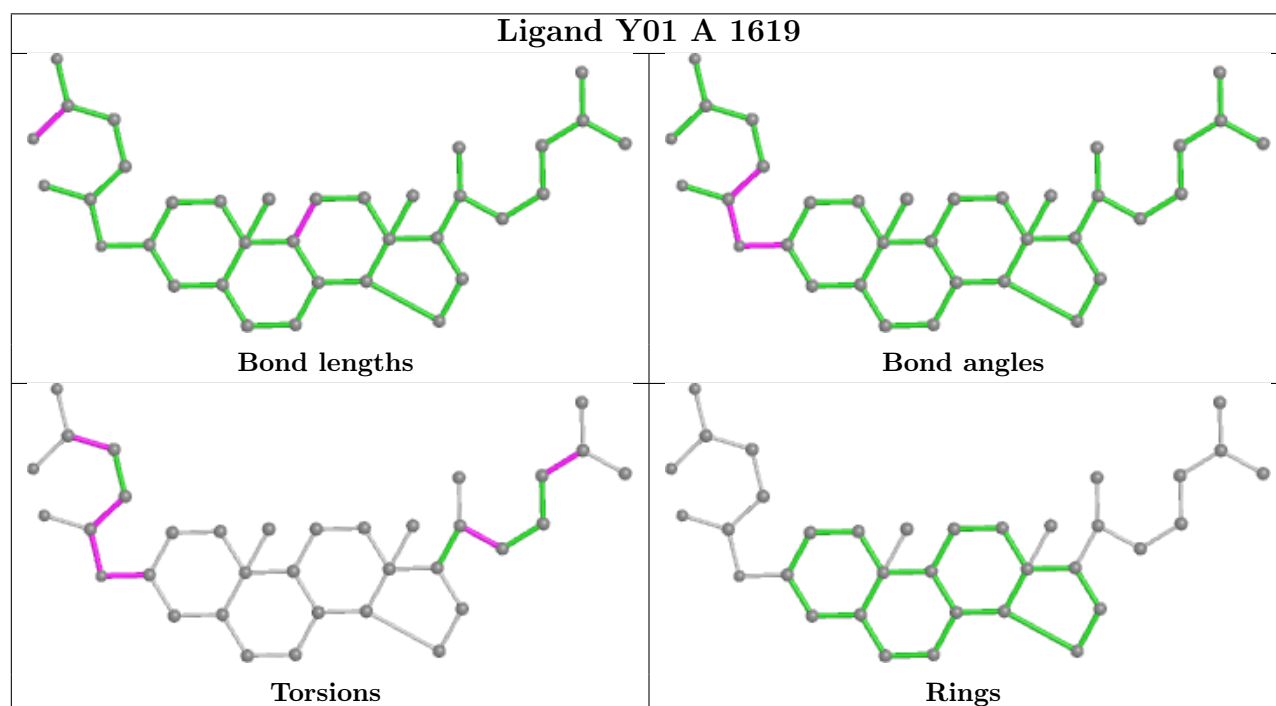
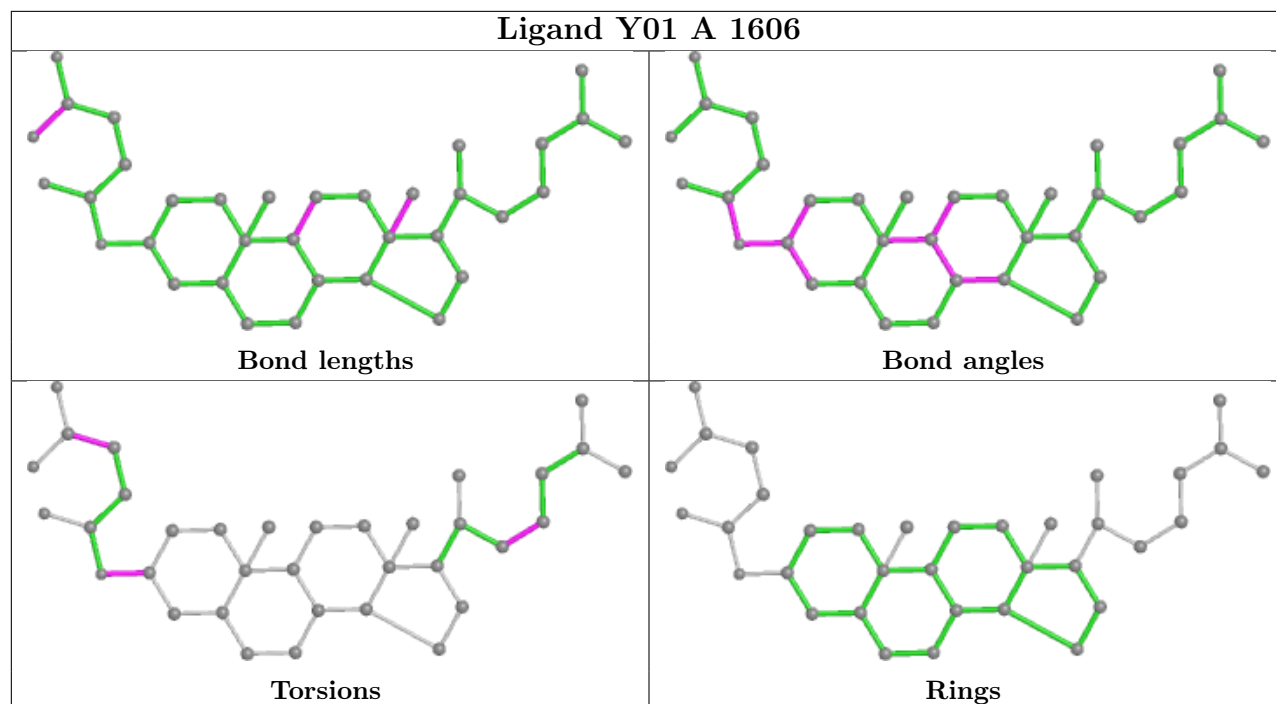
There are no ring outliers.

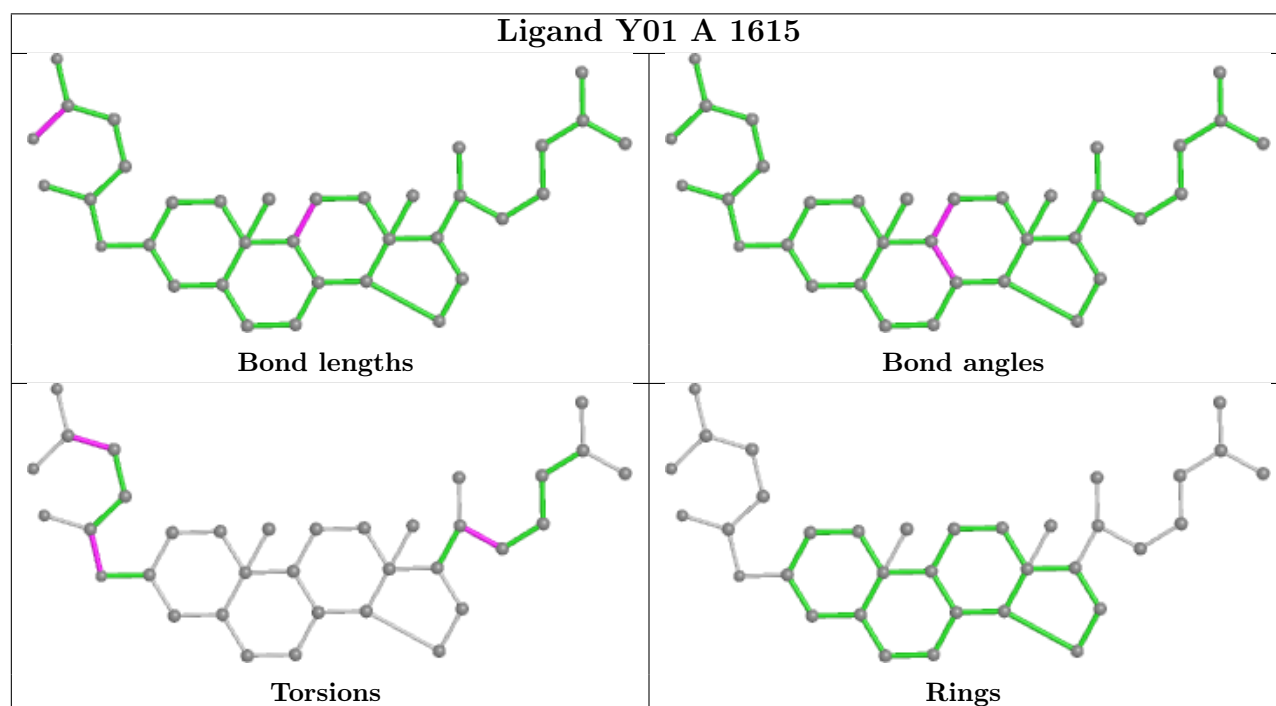
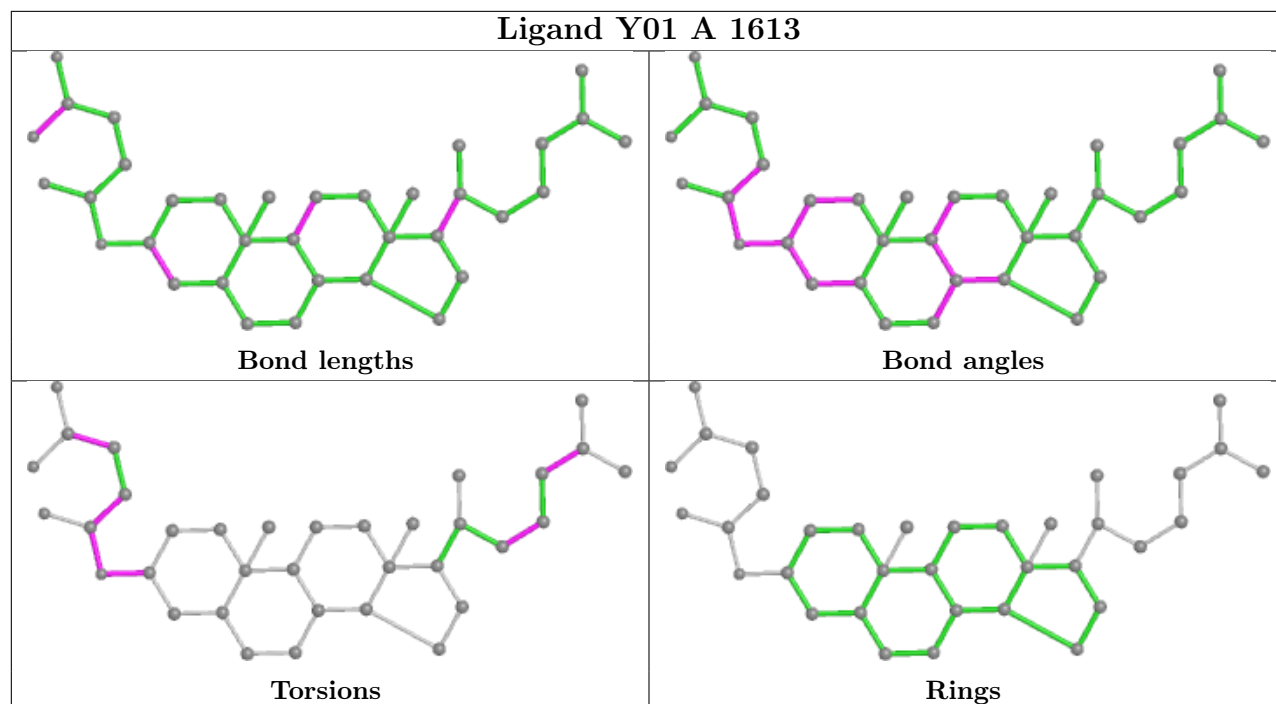
8 monomers are involved in 12 short contacts:

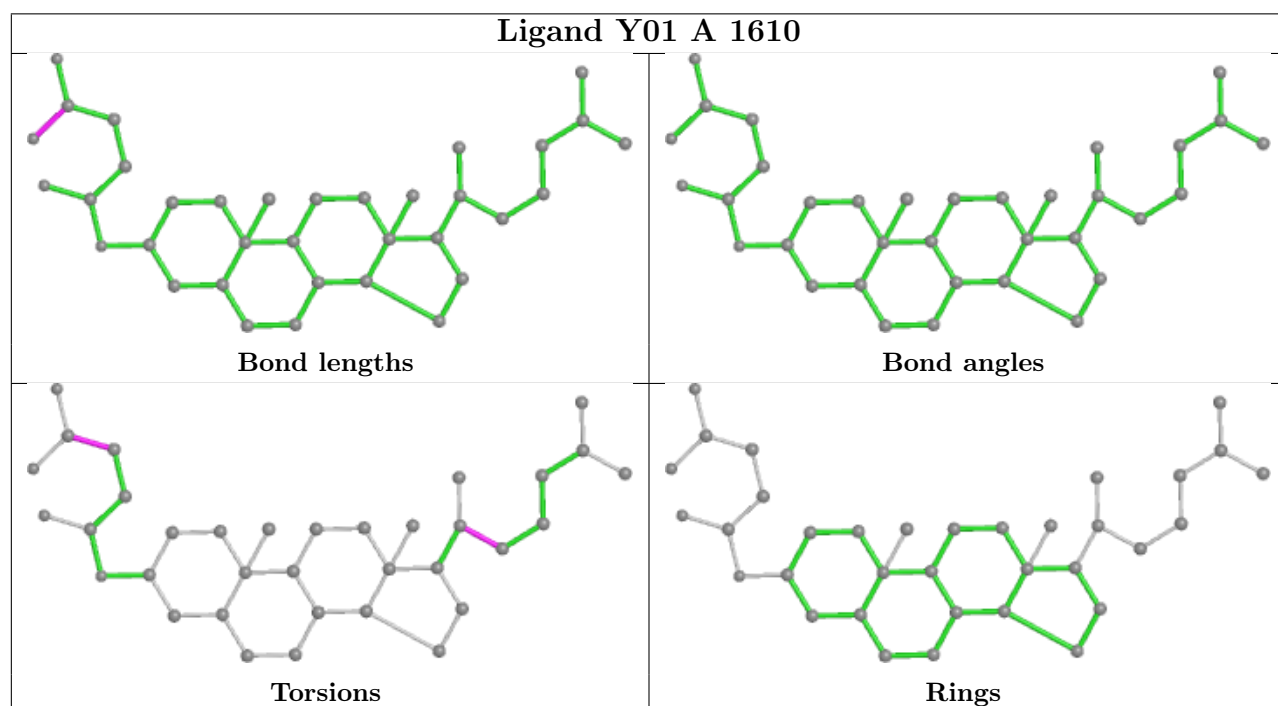
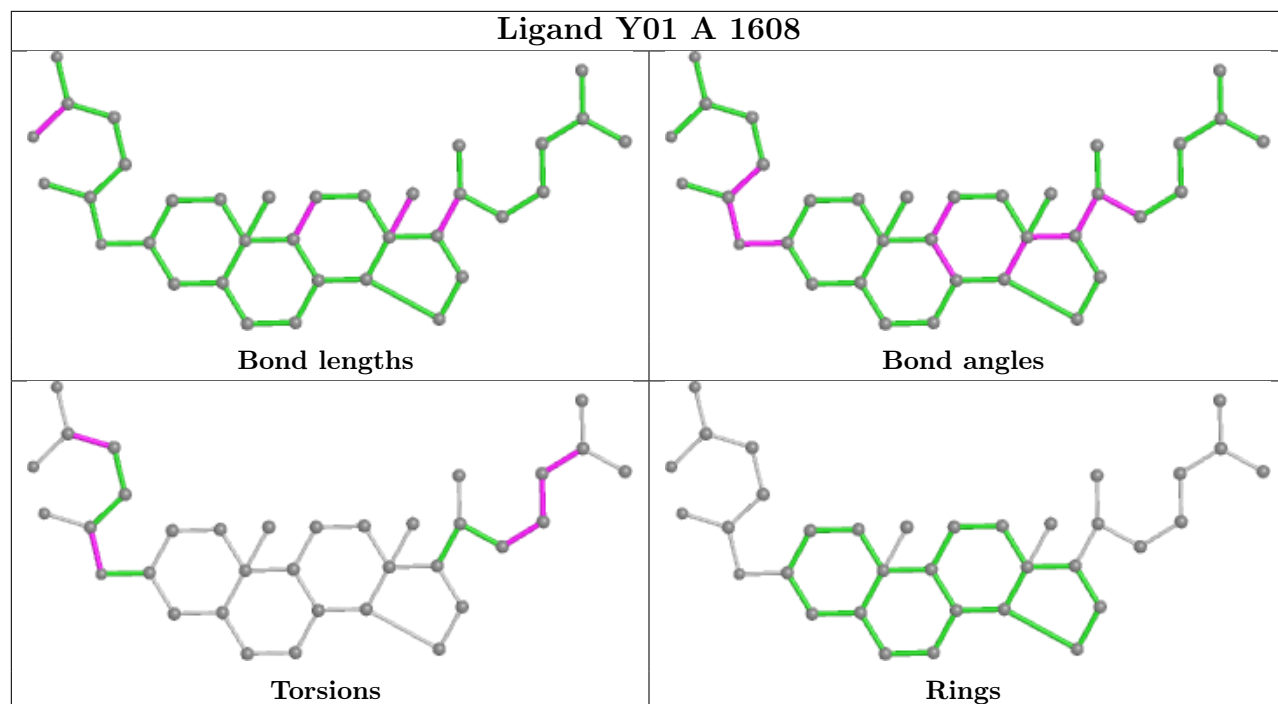
Mol	Chain	Res	Type	Clashes	Symm-Clashes
3	A	1616	Y01	1	0
3	A	1606	Y01	1	0
3	A	1613	Y01	1	0
2	A	1604	NAG	4	0
3	A	1615	Y01	1	0
3	A	1610	Y01	1	0
3	A	1612	Y01	2	0
3	A	1611	Y01	1	0

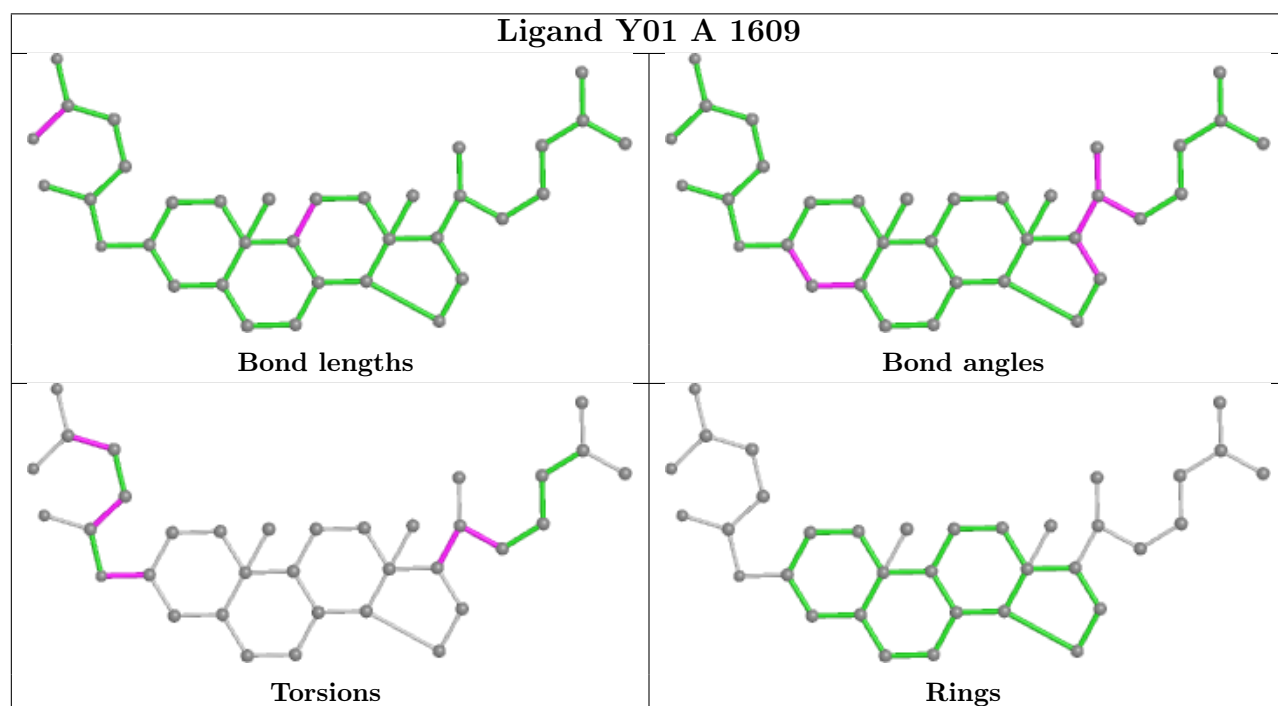
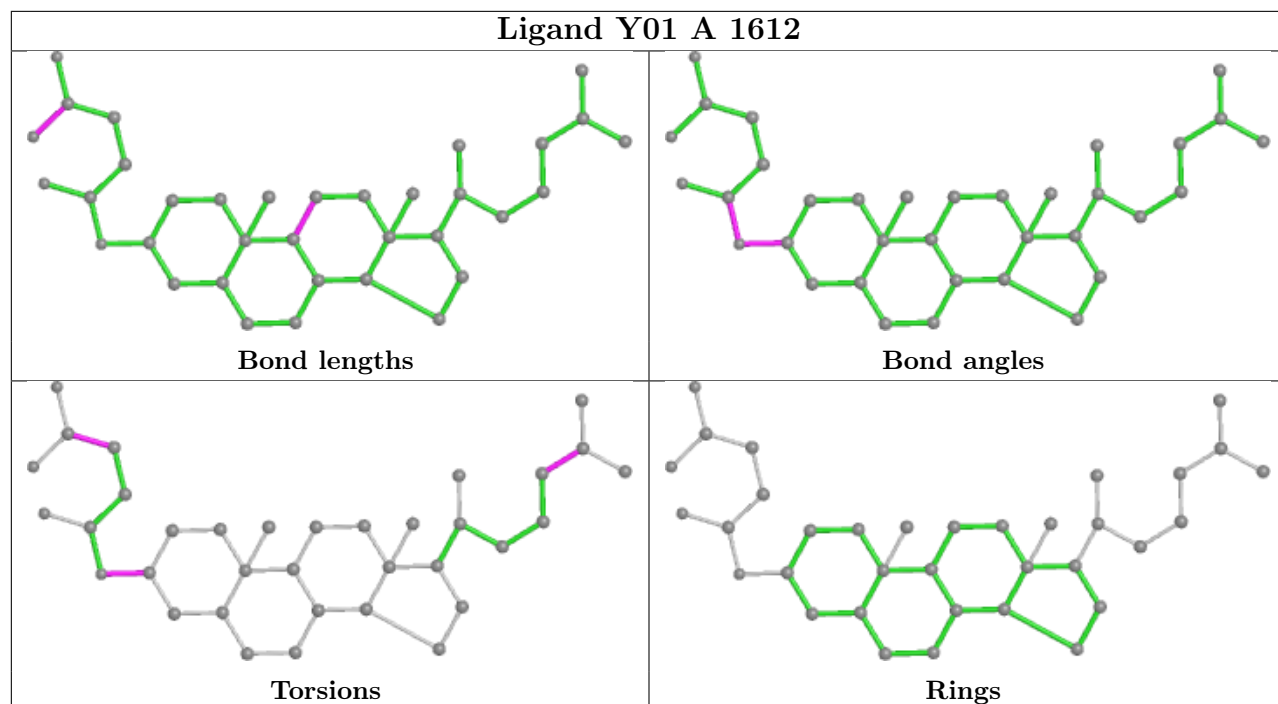
The following is a two-dimensional graphical depiction of Mogul quality analysis of bond lengths, bond angles, torsion angles, and ring geometry for all instances of the Ligand of Interest. In addition, ligands with molecular weight > 250 and outliers as shown on the validation Tables will also be included. For torsion angles, if less than 5% of the Mogul distribution of torsion angles is within 10 degrees of the torsion angle in question, then that torsion angle is considered an outlier. Any bond that is central to one or more torsion angles identified as an outlier by Mogul will be highlighted in the graph. For rings, the root-mean-square deviation (RMSD) between the ring in question and similar rings identified by Mogul is calculated over all ring torsion angles. If the average RMSD is greater than 60 degrees and the minimal RMSD between the ring in question and any Mogul-identified rings is also greater than 60 degrees, then that ring is considered an outlier. The outliers are highlighted in purple. The color gray indicates Mogul did not find sufficient equivalents in the CSD to analyse the geometry.

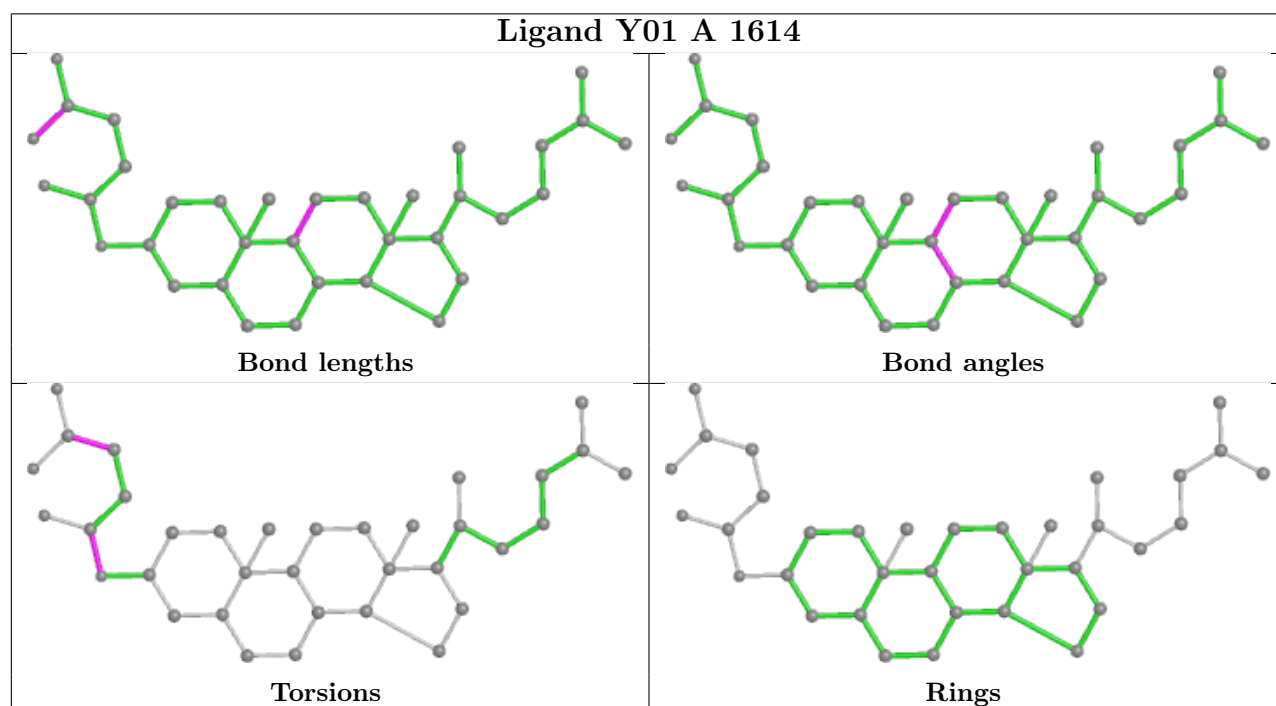
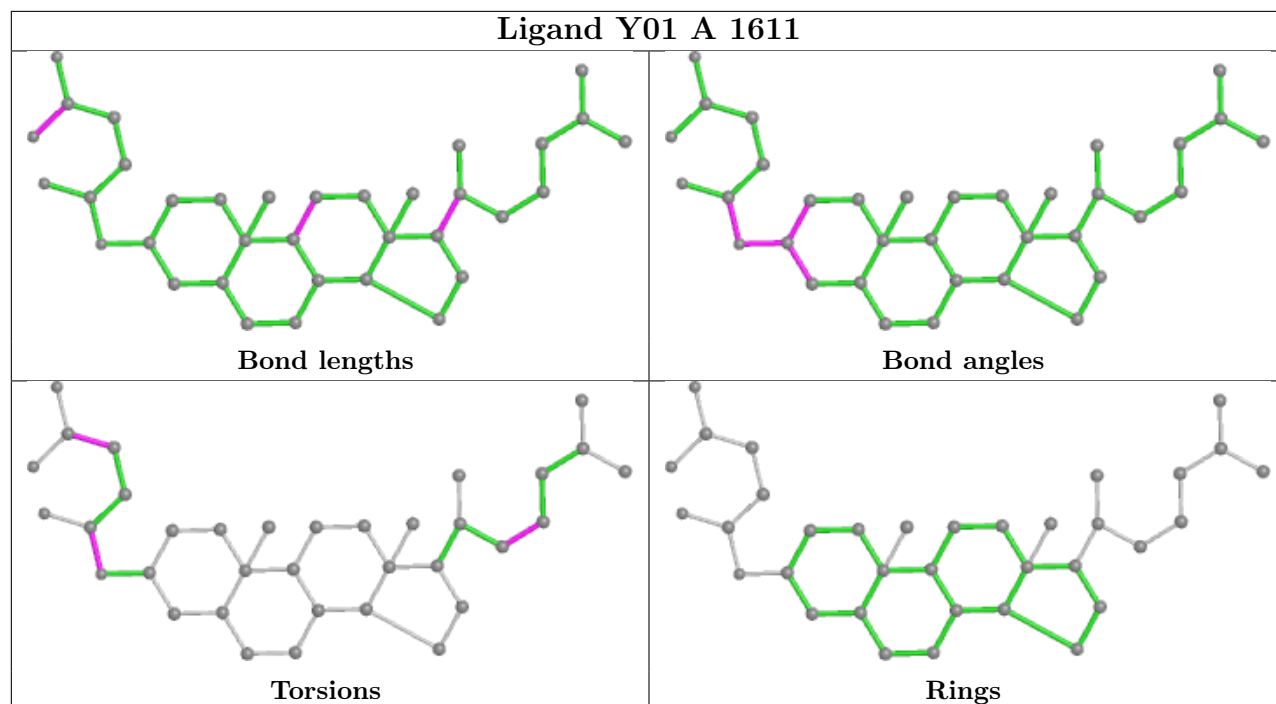


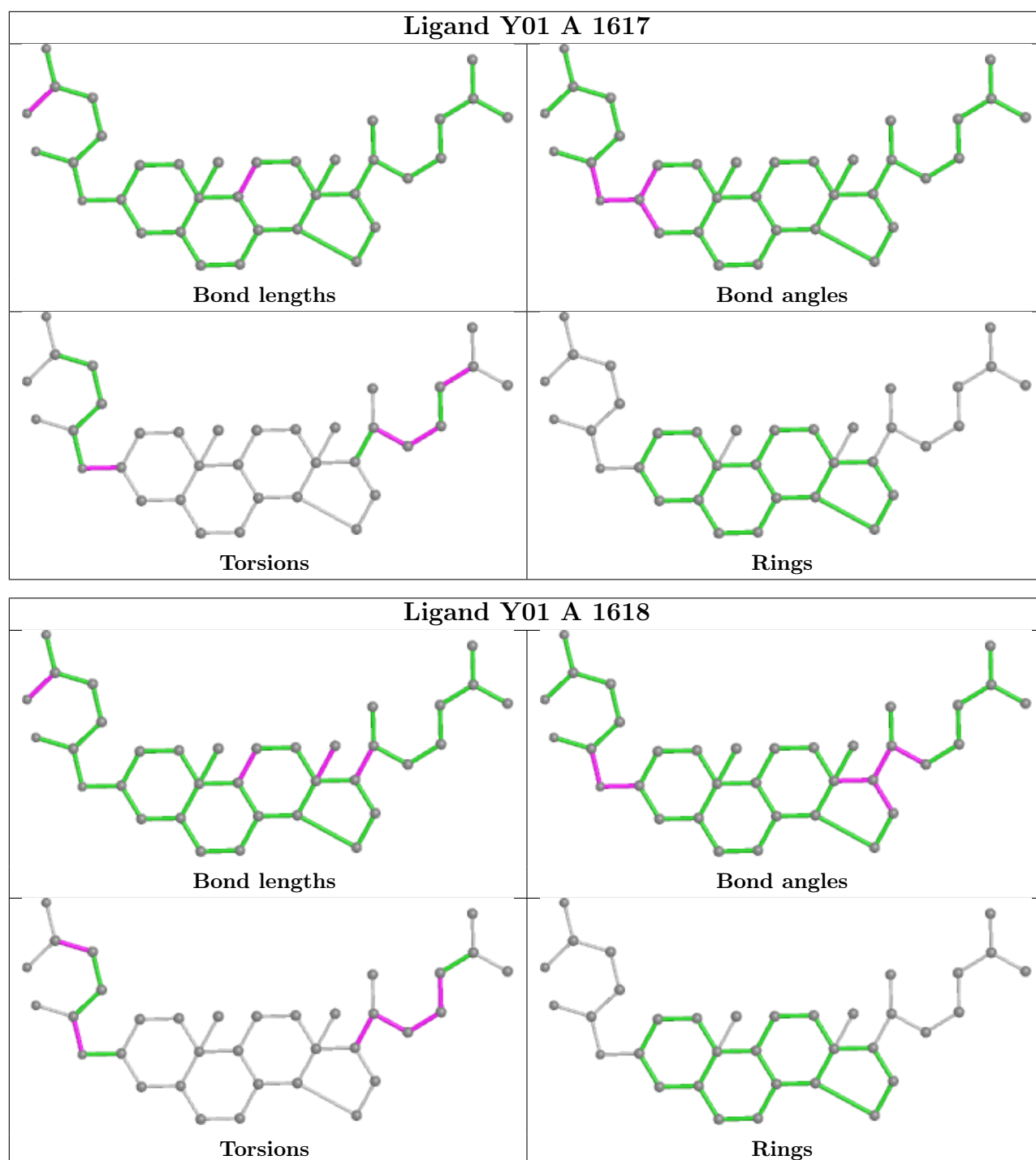












5.7 Other polymers [i](#)

There are no such residues in this entry.

5.8 Polymer linkage issues [i](#)

There are no chain breaks in this entry.

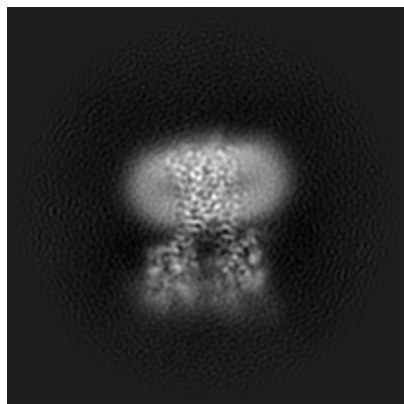
6 Map visualisation [i](#)

This section contains visualisations of the EMDB entry EMD-24616. These allow visual inspection of the internal detail of the map and identification of artifacts.

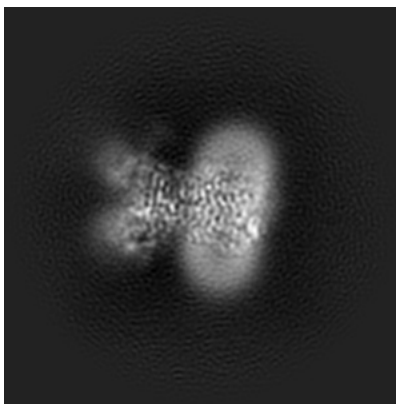
Images derived from a raw map, generated by summing the deposited half-maps, are presented below the corresponding image components of the primary map to allow further visual inspection and comparison with those of the primary map.

6.1 Orthogonal projections [i](#)

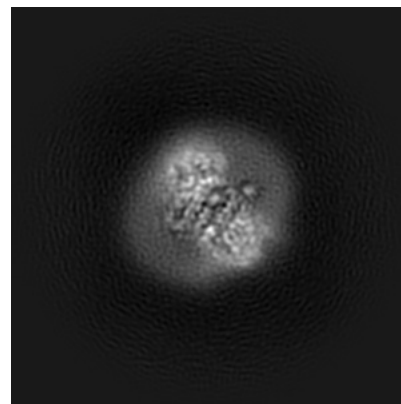
6.1.1 Primary map



X

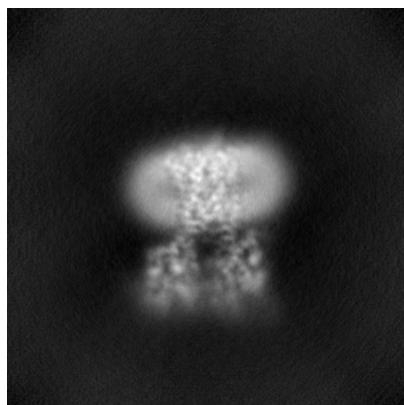


Y

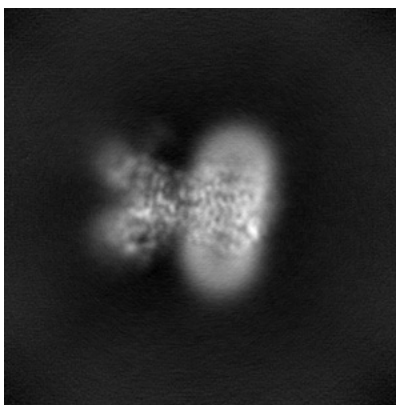


Z

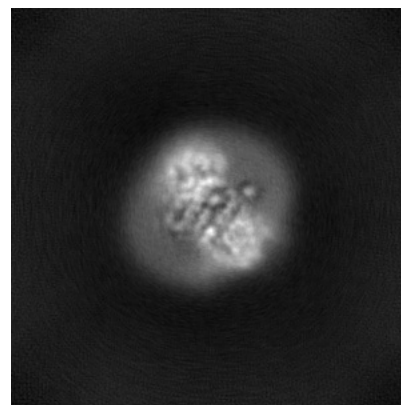
6.1.2 Raw map



X



Y

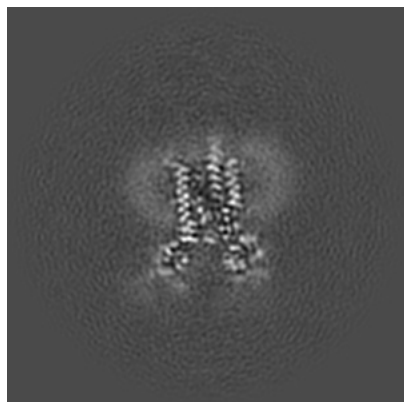


Z

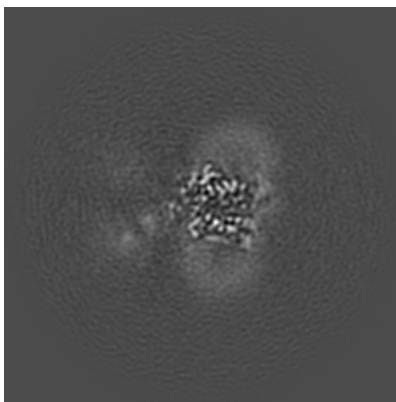
The images above show the map projected in three orthogonal directions.

6.2 Central slices [i](#)

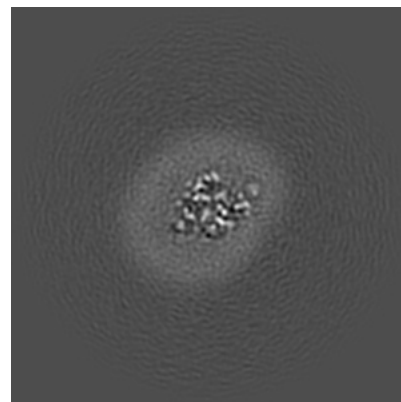
6.2.1 Primary map



X Index: 144

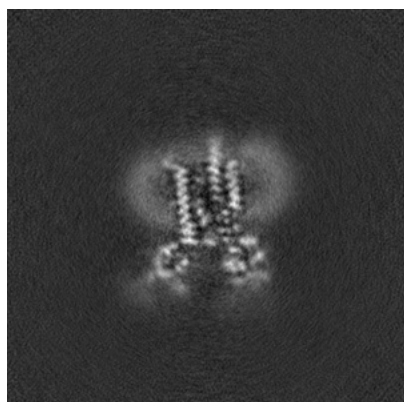


Y Index: 144

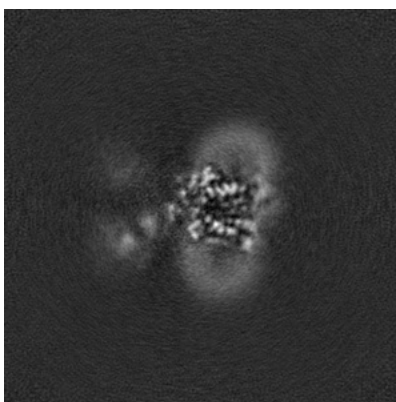


Z Index: 144

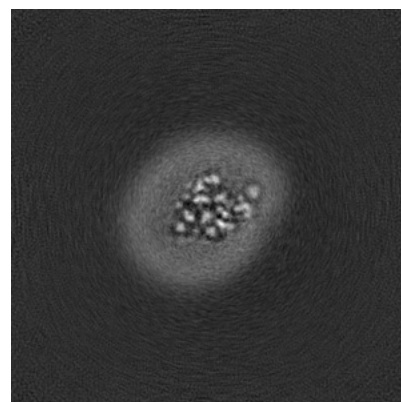
6.2.2 Raw map



X Index: 144



Y Index: 144

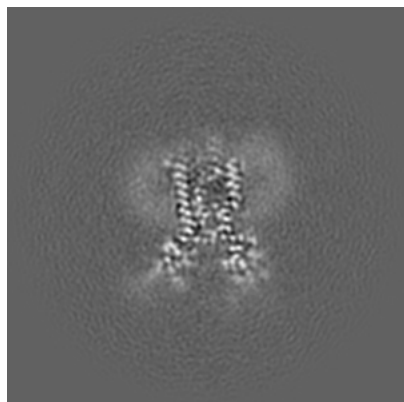


Z Index: 144

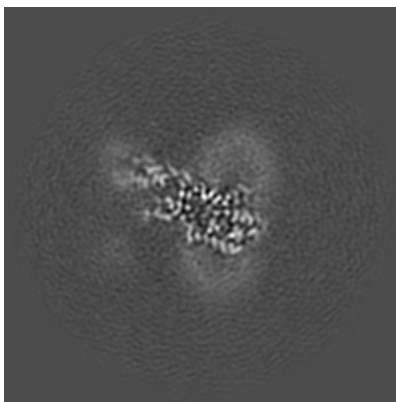
The images above show central slices of the map in three orthogonal directions.

6.3 Largest variance slices [i](#)

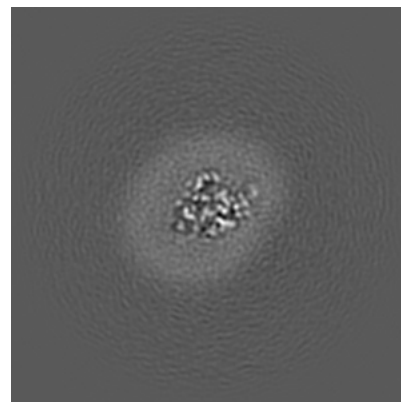
6.3.1 Primary map



X Index: 142

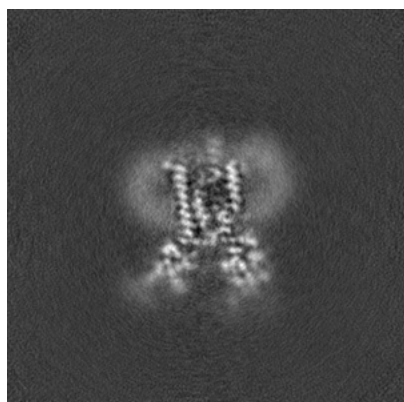


Y Index: 133

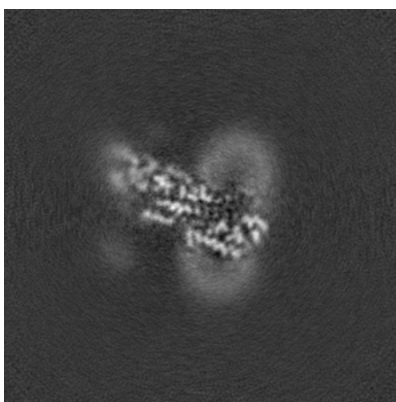


Z Index: 143

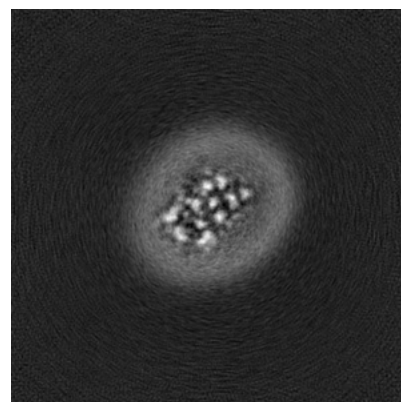
6.3.2 Raw map



X Index: 142



Y Index: 131

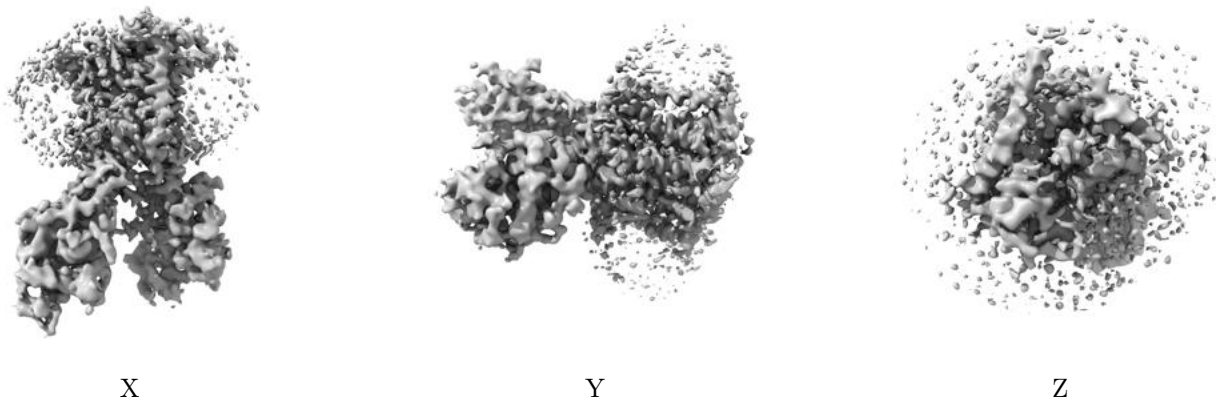


Z Index: 173

The images above show the largest variance slices of the map in three orthogonal directions.

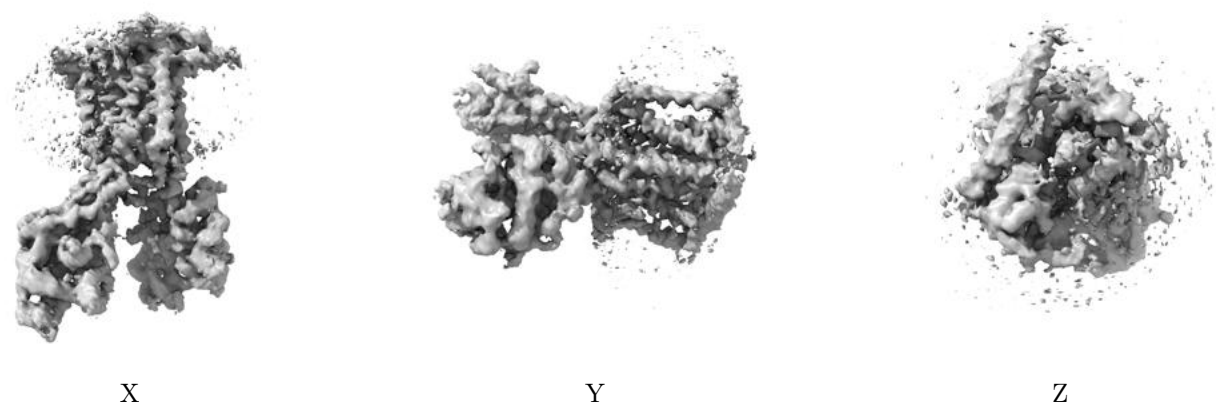
6.4 Orthogonal surface views [i](#)

6.4.1 Primary map



The images above show the 3D surface view of the map at the recommended contour level 3.5. These images, in conjunction with the slice images, may facilitate assessment of whether an appropriate contour level has been provided.

6.4.2 Raw map



These images show the 3D surface of the raw map. The raw map's contour level was selected so that its surface encloses the same volume as the primary map does at its recommended contour level.

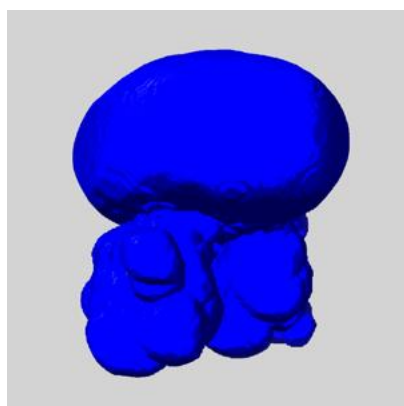
6.5 Mask visualisation [i](#)

This section shows the 3D surface view of the primary map at 50% transparency overlaid with the specified mask at 0% transparency

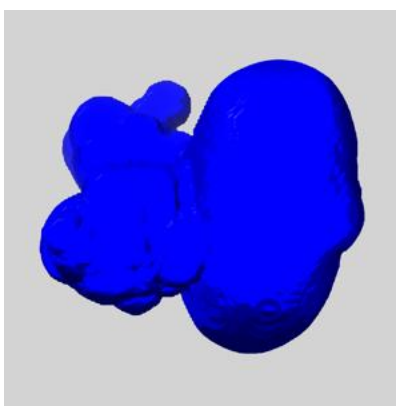
A mask typically either:

- Encompasses the whole structure
- Separates out a domain, a functional unit, a monomer or an area of interest from a larger structure

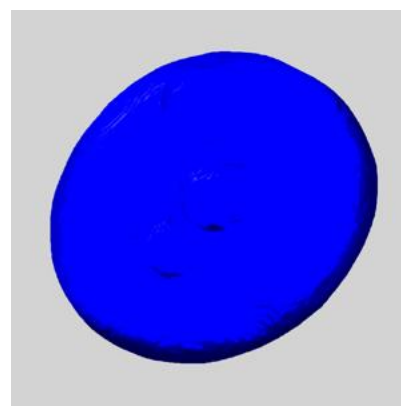
6.5.1 emd_24616_msk_1.map [i](#)



X

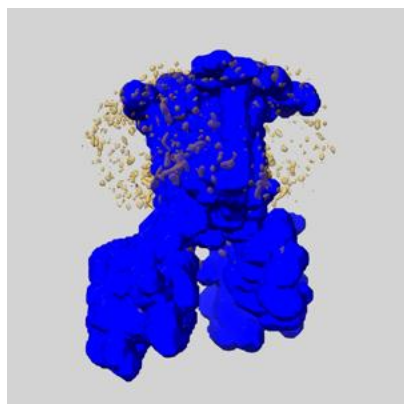


Y

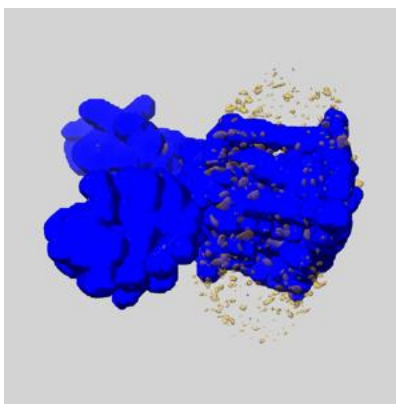


Z

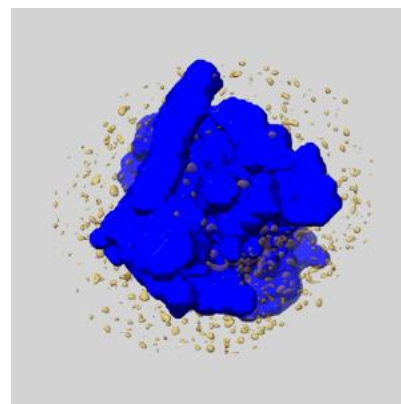
6.5.2 emd_24616_msk_2.map [i](#)



X



Y

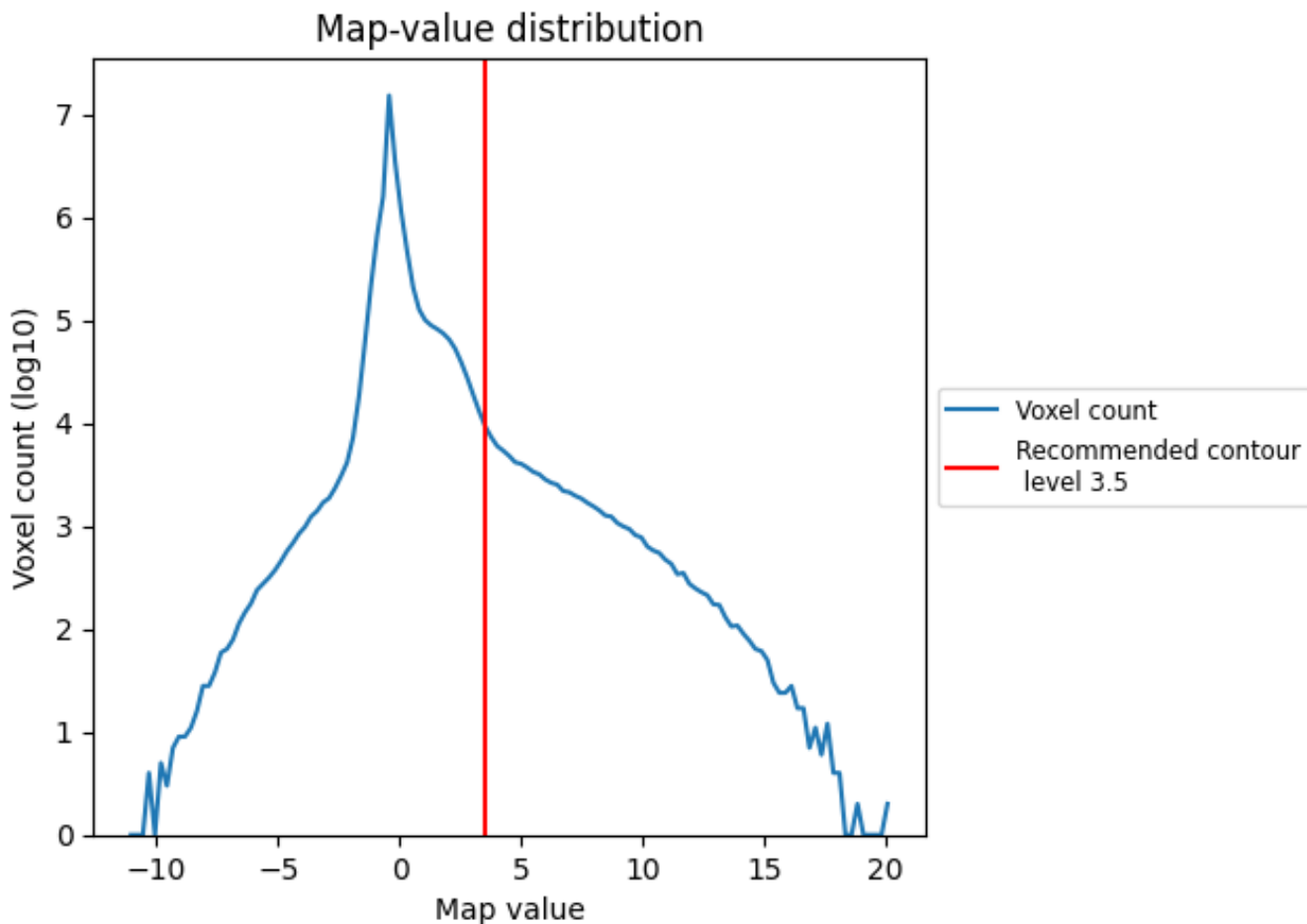


Z

7 Map analysis [i](#)

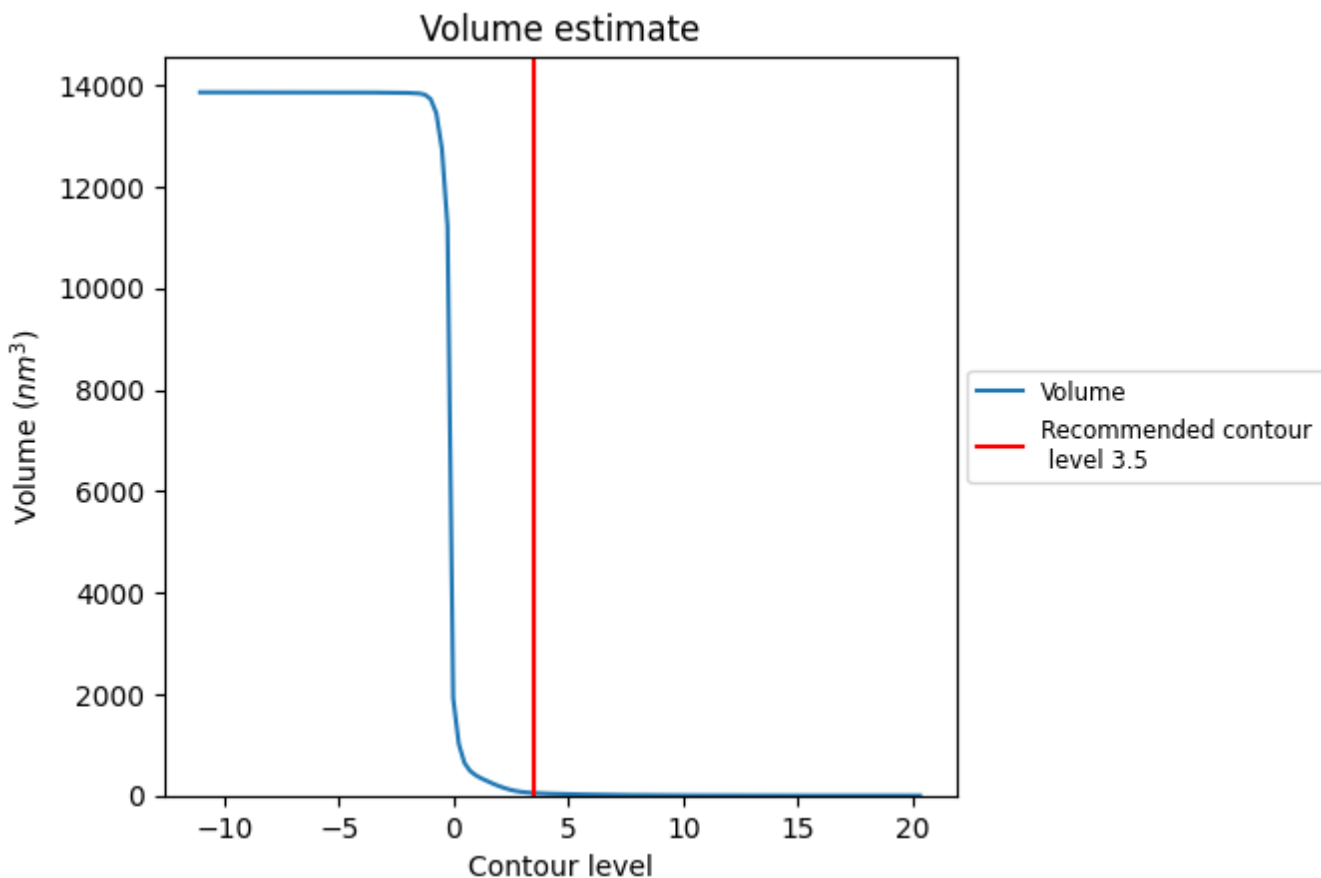
This section contains the results of statistical analysis of the map.

7.1 Map-value distribution [i](#)



The map-value distribution is plotted in 128 intervals along the x-axis. The y-axis is logarithmic. A spike in this graph at zero usually indicates that the volume has been masked.

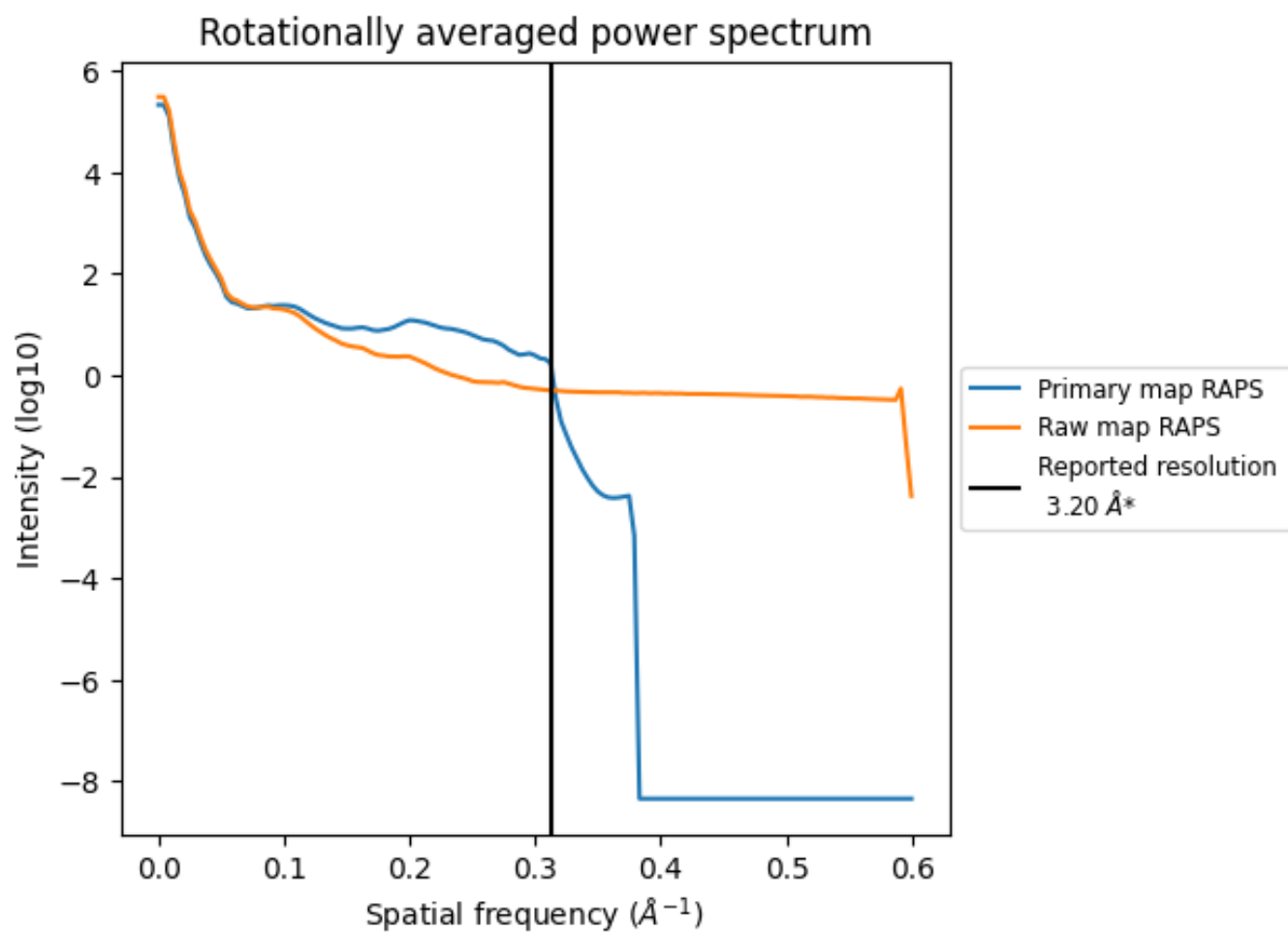
7.2 Volume estimate [i](#)



The volume at the recommended contour level is 50 nm³; this corresponds to an approximate mass of 45 kDa.

The volume estimate graph shows how the enclosed volume varies with the contour level. The recommended contour level is shown as a vertical line and the intersection between the line and the curve gives the volume of the enclosed surface at the given level.

7.3 Rotationally averaged power spectrum [i](#)

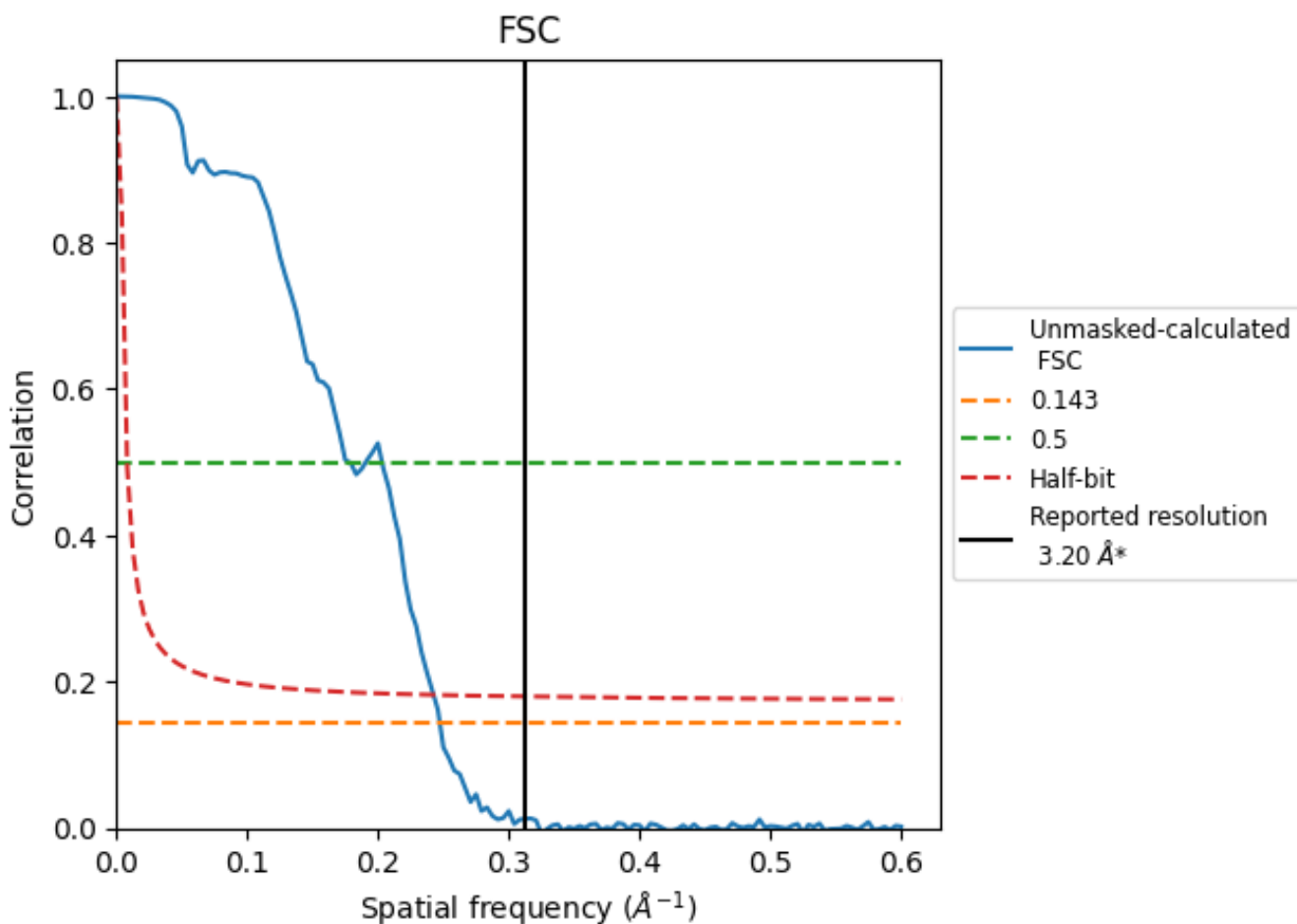


*Reported resolution corresponds to spatial frequency of 0.312 Å⁻¹

8 Fourier-Shell correlation [i](#)

Fourier-Shell Correlation (FSC) is the most commonly used method to estimate the resolution of single-particle and subtomogram-averaged maps. The shape of the curve depends on the imposed symmetry, mask and whether or not the two 3D reconstructions used were processed from a common reference. The reported resolution is shown as a black line. A curve is displayed for the half-bit criterion in addition to lines showing the 0.143 gold standard cut-off and 0.5 cut-off.

8.1 FSC [i](#)



*Reported resolution corresponds to spatial frequency of 0.312 Å⁻¹

8.2 Resolution estimates [i](#)

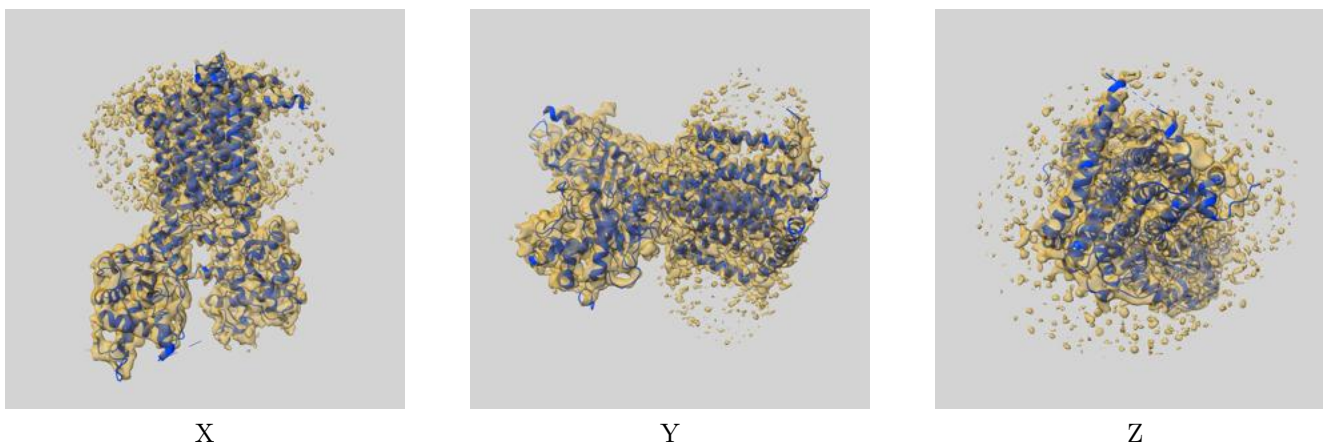
Resolution estimate (Å)	Estimation criterion (FSC cut-off)		
	0.143	0.5	Half-bit
Reported by author	3.20	-	-
Author-provided FSC curve	-	-	-
Unmasked-calculated*	4.05	5.62	4.13

*Resolution estimate based on FSC curve calculated by comparison of deposited half-maps. The value from deposited half-maps intersecting FSC 0.143 CUT-OFF 4.05 differs from the reported value 3.2 by more than 10 %

9 Map-model fit [i](#)

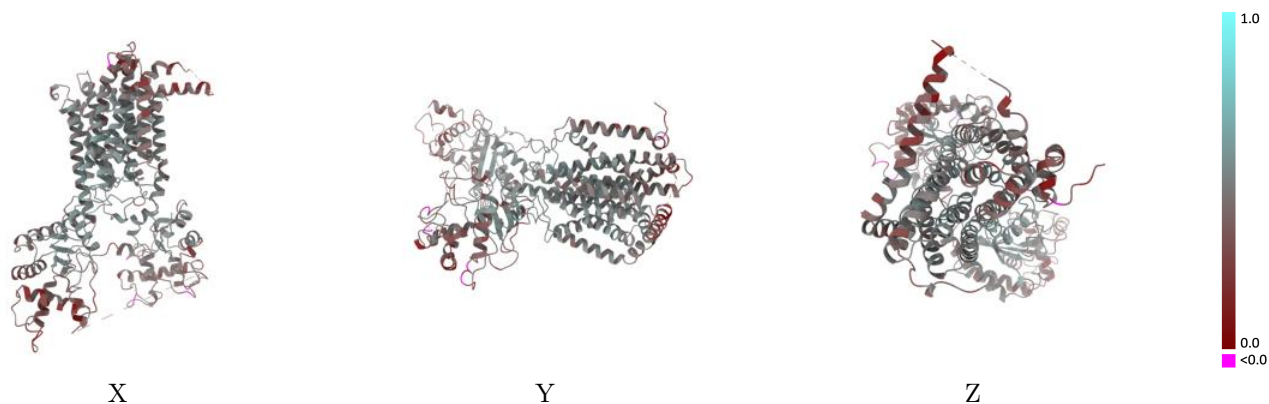
This section contains information regarding the fit between EMDB map EMD-24616 and PDB model 7RPJ. Per-residue inclusion information can be found in section 3 on page 6.

9.1 Map-model overlay [i](#)



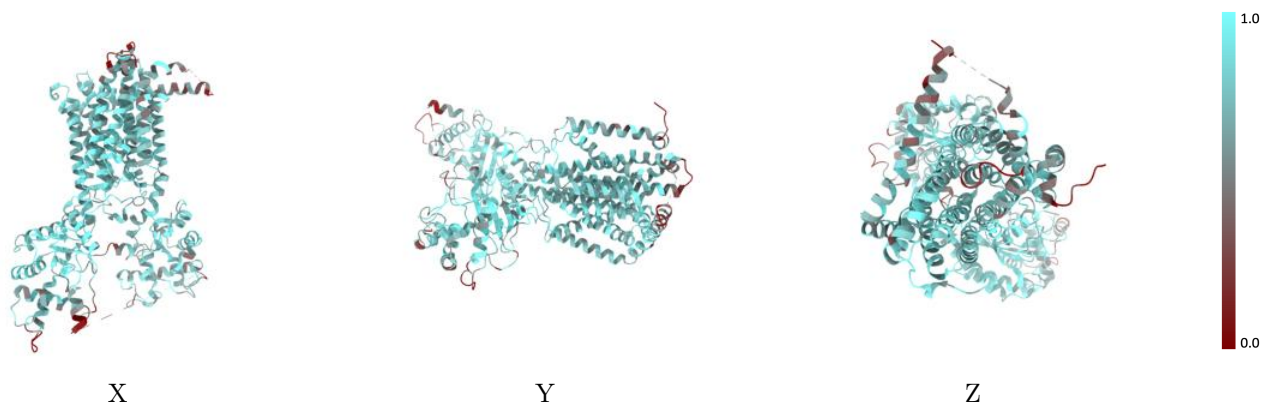
The images above show the 3D surface view of the map at the recommended contour level 3.5 at 50% transparency in yellow overlaid with a ribbon representation of the model coloured in blue. These images allow for the visual assessment of the quality of fit between the atomic model and the map.

9.2 Q-score mapped to coordinate model [\(i\)](#)



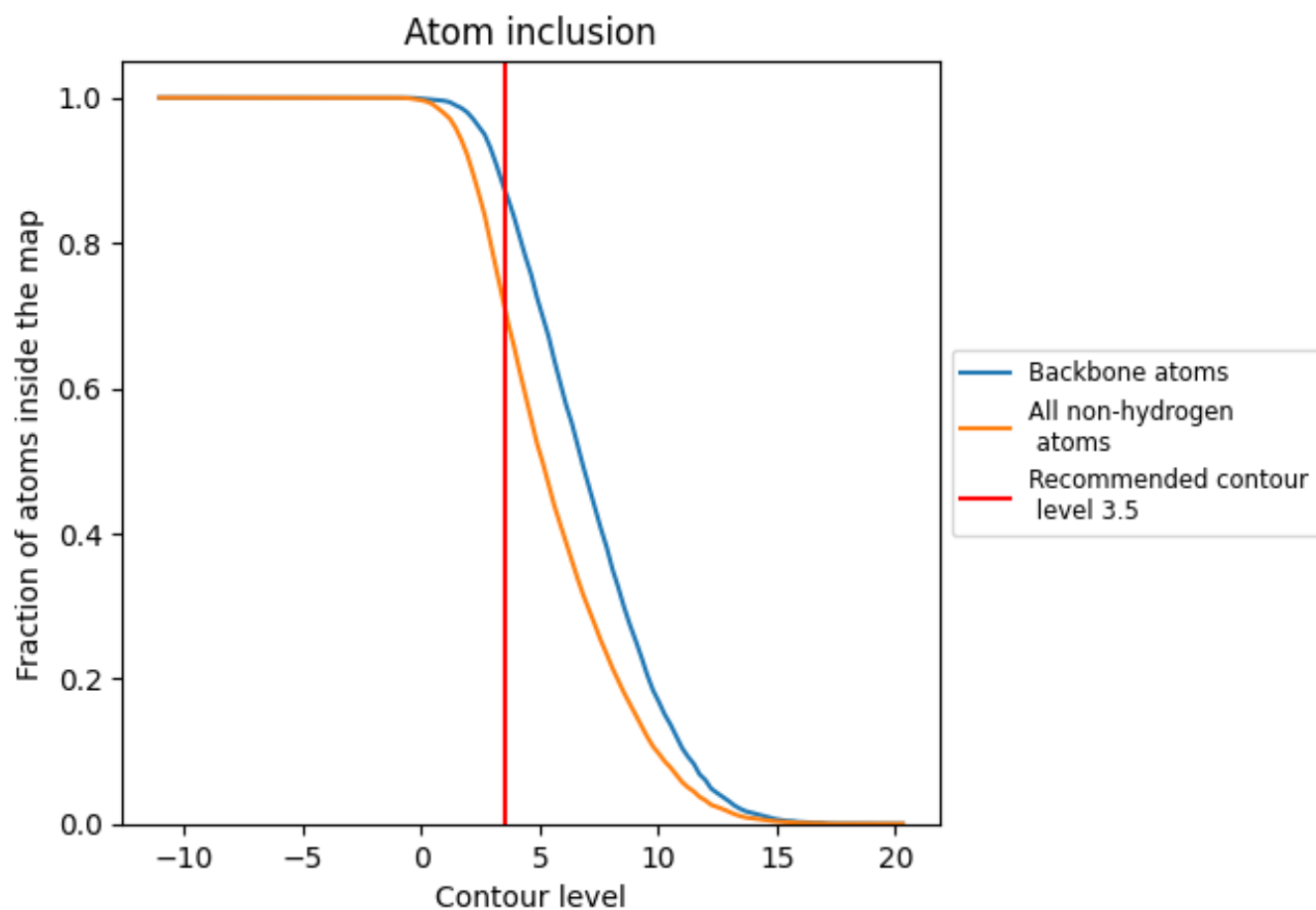
The images above show the model with each residue coloured according to its Q-score. This shows their resolvability in the map with higher Q-score values reflecting better resolvability. Please note: Q-score is calculating the resolvability of atoms, and thus high values are only expected at resolutions at which atoms can be resolved. Low Q-score values may therefore be expected for many entries.

9.3 Atom inclusion mapped to coordinate model [\(i\)](#)



The images above show the model with each residue coloured according to its atom inclusion. This shows to what extent they are inside the map at the recommended contour level (3.5).




9.4 Atom inclusion [i](#)



At the recommended contour level, 87% of all backbone atoms, 71% of all non-hydrogen atoms, are inside the map.

9.5 Map-model fit summary [i](#)

The table lists the average atom inclusion at the recommended contour level (3.5) and Q-score for the entire model and for each chain.

Chain	Atom inclusion	Q-score
All	 0.7141	 0.4270
A	 0.7141	 0.4270

