



# Full wwPDB X-ray Structure Validation Report ⓘ

Mar 12, 2024 – 12:44 pm GMT

PDB ID : 8S0Q  
Title : A fragment-based inhibitor of SHP2  
Authors : Cleasby, A.; Price, A.  
Deposited on : 2024-02-14  
Resolution : 1.87 Å(reported)

This is a Full wwPDB X-ray Structure Validation Report for a publicly released PDB entry.

We welcome your comments at [validation@mail.wwpdb.org](mailto:validation@mail.wwpdb.org)

A user guide is available at

<https://www.wwpdb.org/validation/2017/XrayValidationReportHelp>

with specific help available everywhere you see the ⓘ symbol.

The types of validation reports are described at

<http://www.wwpdb.org/validation/2017/FAQs#types>.

---

The following versions of software and data (see [references ⓘ](#)) were used in the production of this report:

MolProbity : 4.02b-467  
Mogul : 1.8.4, CSD as541be (2020)  
Xtriage (Phenix) : 1.13  
EDS : 2.36  
buster-report : 1.1.7 (2018)  
Percentile statistics : 20191225.v01 (using entries in the PDB archive December 25th 2019)  
Refmac : 5.8.0158  
CCP4 : 7.0.044 (Gargrove)  
Ideal geometry (proteins) : Engh & Huber (2001)  
Ideal geometry (DNA, RNA) : Parkinson et al. (1996)  
Validation Pipeline (wwPDB-VP) : 2.36

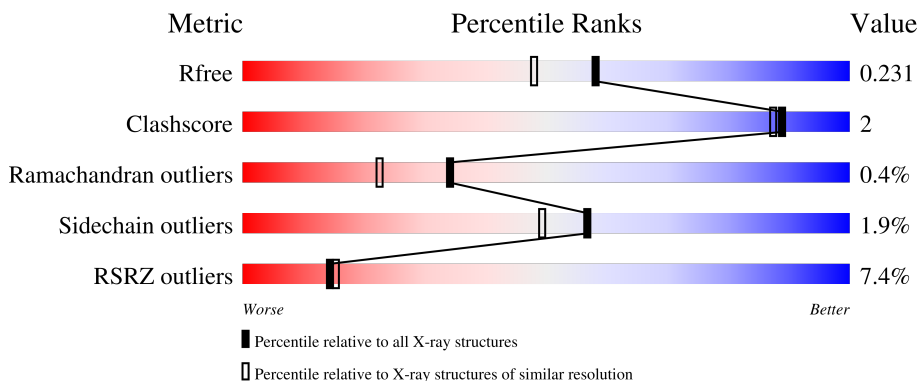
# 1 Overall quality at a glance

The following experimental techniques were used to determine the structure:

*X-RAY DIFFRACTION*

The reported resolution of this entry is 1.87 Å.

Percentile scores (ranging between 0-100) for global validation metrics of the entry are shown in the following graphic. The table shows the number of entries on which the scores are based.



Metric	Whole archive (#Entries)	Similar resolution (#Entries, resolution range(Å))
$R_{free}$	130704	9470 (1.90-1.86)
Clashscore	141614	10282 (1.90-1.86)
Ramachandran outliers	138981	10152 (1.90-1.86)
Sidechain outliers	138945	10152 (1.90-1.86)
RSRZ outliers	127900	9303 (1.90-1.86)

The table below summarises the geometric issues observed across the polymeric chains and their fit to the electron density. The red, orange, yellow and green segments of the lower bar indicate the fraction of residues that contain outliers for  $\geq 3$ , 2, 1 and 0 types of geometric quality criteria respectively. A grey segment represents the fraction of residues that are not modelled. The numeric value for each fraction is indicated below the corresponding segment, with a dot representing fractions  $\leq 5\%$ . The upper red bar (where present) indicates the fraction of residues that have poor fit to the electron density. The numeric value is given above the bar.

Mol	Chain	Length	Quality of chain
1	A	537	
1	B	537	

The following table lists non-polymeric compounds, carbohydrate monomers and non-standard residues in protein, DNA, RNA chains that are outliers for geometric or electron-density-fit criteria:

Mol	Type	Chain	Res	Chirality	Geometry	Clashes	Electron density
2	A1H4T	B	601	X	-	-	-

## 2 Entry composition

There are 3 unique types of molecules in this entry. The entry contains 9077 atoms, of which 42 are hydrogens and 0 are deuteriums.

In the tables below, the ZeroOcc column contains the number of atoms modelled with zero occupancy, the AltConf column contains the number of residues with at least one atom in alternate conformation and the Trace column contains the number of residues modelled with at most 2 atoms.

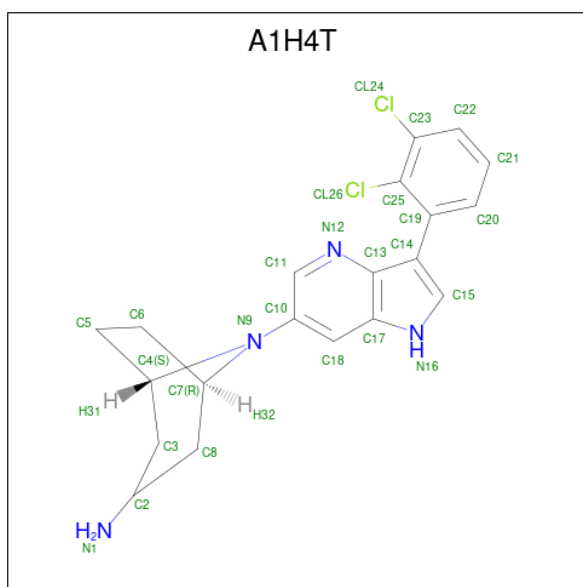
- Molecule 1 is a protein called Tyrosine-protein phosphatase non-receptor type 11.

Mol	Chain	Residues	Atoms					ZeroOcc	AltConf	Trace
			Total	C	N	O	S			
1	A	502	4076	2563	729	766	18	0	1	0
1	B	504	4085	2566	734	767	18	0	0	0

There are 18 discrepancies between the modelled and reference sequences:

Chain	Residue	Modelled	Actual	Comment	Reference
A	0	HIS	-	expression tag	UNP Q06124
A	529	LEU	-	expression tag	UNP Q06124
A	530	GLU	-	expression tag	UNP Q06124
A	531	HIS	-	expression tag	UNP Q06124
A	532	HIS	-	expression tag	UNP Q06124
A	533	HIS	-	expression tag	UNP Q06124
A	534	HIS	-	expression tag	UNP Q06124
A	535	HIS	-	expression tag	UNP Q06124
A	536	HIS	-	expression tag	UNP Q06124
B	0	HIS	-	expression tag	UNP Q06124
B	529	LEU	-	expression tag	UNP Q06124
B	530	GLU	-	expression tag	UNP Q06124
B	531	HIS	-	expression tag	UNP Q06124
B	532	HIS	-	expression tag	UNP Q06124
B	533	HIS	-	expression tag	UNP Q06124
B	534	HIS	-	expression tag	UNP Q06124
B	535	HIS	-	expression tag	UNP Q06124
B	536	HIS	-	expression tag	UNP Q06124

- Molecule 2 is (1S,5R)-8-[3-[2,3-bis(chloranyl)phenyl]-1H-pyrrolo[3,2-b]pyridin-6-yl]-8-azabicyclo[3.2.1]octan-3-amine (three-letter code: A1H4T) (formula: C<sub>20</sub>H<sub>20</sub>Cl<sub>2</sub>N<sub>4</sub>) (labeled as "Ligand of Interest" by depositor).



Mol	Chain	Residues	Atoms				ZeroOcc	AltConf	
			Total	C	Cl	H			N
2	A	1	47	20	2	21	4	0	0
2	B	1	47	20	2	21	4	0	0

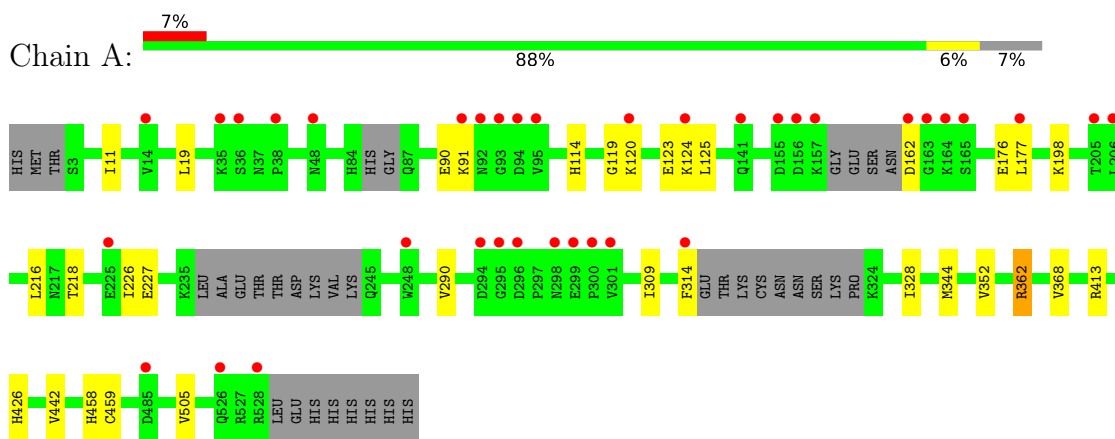
- Molecule 3 is water.

Mol	Chain	Residues	Atoms	ZeroOcc	AltConf
3	A	409	Total 409 O 409	0	0
3	B	413	Total 413 O 413	0	0

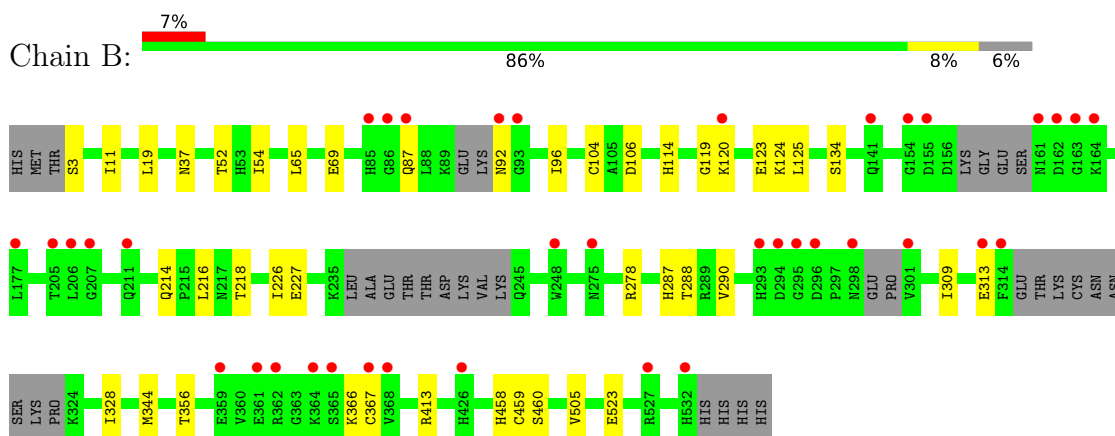
### 3 Residue-property plots [i](#)

These plots are drawn for all protein, RNA, DNA and oligosaccharide chains in the entry. The first graphic for a chain summarises the proportions of the various outlier classes displayed in the second graphic. The second graphic shows the sequence view annotated by issues in geometry and electron density. Residues are color-coded according to the number of geometric quality criteria for which they contain at least one outlier: green = 0, yellow = 1, orange = 2 and red = 3 or more. A red dot above a residue indicates a poor fit to the electron density ( $RSRZ > 2$ ). Stretches of 2 or more consecutive residues without any outlier are shown as a green connector. Residues present in the sample, but not in the model, are shown in grey.

- Molecule 1: Tyrosine-protein phosphatase non-receptor type 11



- Molecule 1: Tyrosine-protein phosphatase non-receptor type 11



## 4 Data and refinement statistics

Property	Value	Source
Space group	P 1 21 1	Depositor
Cell constants a, b, c, $\alpha$ , $\beta$ , $\gamma$	45.74Å 214.34Å 55.77Å 90.00° 97.09° 90.00°	Depositor
Resolution (Å)	55.34 – 1.87 55.34 – 1.87	Depositor EDS
% Data completeness (in resolution range)	99.0 (55.34-1.87) 98.9 (55.34-1.87)	Depositor EDS
$R_{merge}$	(Not available)	Depositor
$R_{sym}$	(Not available)	Depositor
$\langle I/\sigma(I) \rangle$ <sup>1</sup>	1.87 (at 1.87Å)	Xtrriage
Refinement program		Depositor
R, $R_{free}$	0.193 , 0.236 0.195 , 0.231	Depositor DCC
$R_{free}$ test set	4365 reflections (5.06%)	wwPDB-VP
Wilson B-factor (Å <sup>2</sup> )	28.3	Xtrriage
Anisotropy	0.288	Xtrriage
Bulk solvent $k_{sol}$ (e/Å <sup>3</sup> ), $B_{sol}$ (Å <sup>2</sup> )	0.34 , 62.7	EDS
L-test for twinning <sup>2</sup>	$\langle  L  \rangle = 0.51$ , $\langle L^2 \rangle = 0.34$	Xtrriage
Estimated twinning fraction	No twinning to report.	Xtrriage
$F_o, F_c$ correlation	0.96	EDS
Total number of atoms	9077	wwPDB-VP
Average B, all atoms (Å <sup>2</sup> )	40.0	wwPDB-VP

Xtrriage's analysis on translational NCS is as follows: *The largest off-origin peak in the Patterson function is 5.45% of the height of the origin peak. No significant pseudotranslation is detected.*

<sup>1</sup>Intensities estimated from amplitudes.

<sup>2</sup>Theoretical values of  $\langle |L| \rangle$ ,  $\langle L^2 \rangle$  for acentric reflections are 0.5, 0.333 respectively for untwinned datasets, and 0.375, 0.2 for perfectly twinned datasets.

## 5 Model quality [i](#)

### 5.1 Standard geometry [i](#)

Bond lengths and bond angles in the following residue types are not validated in this section: A1H4T

The Z score for a bond length (or angle) is the number of standard deviations the observed value is removed from the expected value. A bond length (or angle) with  $|Z| > 5$  is considered an outlier worth inspection. RMSZ is the root-mean-square of all Z scores of the bond lengths (or angles).

Mol	Chain	Bond lengths		Bond angles	
		RMSZ	# Z  >5	RMSZ	# Z  >5
1	A	0.65	0/4163	0.67	0/5612
1	B	0.67	0/4169	0.68	0/5620
All	All	0.66	0/8332	0.68	0/11232

There are no bond length outliers.

There are no bond angle outliers.

There are no chirality outliers.

There are no planarity outliers.

### 5.2 Too-close contacts [i](#)

In the following table, the Non-H and H(model) columns list the number of non-hydrogen atoms and hydrogen atoms in the chain respectively. The H(added) column lists the number of hydrogen atoms added and optimized by MolProbity. The Clashes column lists the number of clashes within the asymmetric unit, whereas Symm-Clashes lists symmetry-related clashes.

Mol	Chain	Non-H	H(model)	H(added)	Clashes	Symm-Clashes
1	A	4076	0	4006	12	0
1	B	4085	0	4002	18	0
2	A	26	21	0	0	0
2	B	26	21	0	0	0
3	A	409	0	0	0	0
3	B	413	0	0	1	0
All	All	9035	42	8008	30	0

The all-atom clashscore is defined as the number of clashes found per 1000 atoms (including hydrogen atoms). The all-atom clashscore for this structure is 2.

All (30) close contacts within the same asymmetric unit are listed below, sorted by their clash



magnitude.

Atom-1	Atom-2	Interatomic distance (Å)	Clash overlap (Å)
1:B:356:THR:OG1	1:B:459:CYS:HB3	1.54	1.06
1:B:356:THR:OG1	1:B:459:CYS:CB	2.19	0.90
1:A:362:ARG:NH2	1:A:426[A]:HIS:CD2	2.77	0.53
1:B:356:THR:OG1	1:B:459:CYS:HB2	2.08	0.52
1:B:287:HIS:CD2	1:B:288:THR:HG23	2.45	0.51
1:A:120:LYS:O	1:A:124:LYS:HG2	2.12	0.50
1:B:120:LYS:O	1:B:124:LYS:HG2	2.12	0.49
1:A:309:ILE:HD13	1:A:328:ILE:HG12	1.93	0.49
1:B:309:ILE:HD13	1:B:328:ILE:HG12	1.96	0.47
1:A:176:GLU:O	1:A:177:LEU:HB2	2.14	0.47
1:A:90:GLU:HG3	1:A:91:LYS:N	2.30	0.46
1:B:104:CYS:SG	1:B:106:ASP:HB3	2.57	0.45
1:B:290:VAL:HG11	1:B:344:MET:HG3	2.00	0.44
1:A:352:VAL:HG11	1:A:442:VAL:HG13	1.99	0.44
1:B:226:ILE:HG23	1:B:227:GLU:N	2.34	0.43
1:B:114:HIS:CE1	1:B:218:THR:HG21	2.54	0.43
1:A:114:HIS:CE1	1:A:218:THR:HG21	2.54	0.43
1:A:290:VAL:HG11	1:A:344:MET:HG3	2.01	0.43
1:A:226:ILE:HG23	1:A:227:GLU:N	2.34	0.42
1:A:11:ILE:CD1	1:A:19:LEU:HD12	2.49	0.42
1:B:11:ILE:CD1	1:B:19:LEU:HD12	2.49	0.42
1:A:119:GLY:O	1:A:123:GLU:HG3	2.20	0.42
1:B:119:GLY:O	1:B:123:GLU:HG3	2.20	0.41
1:B:54:ILE:HD11	1:B:96:ILE:HD13	2.02	0.41
1:B:134:SER:HA	1:B:214:GLN:O	2.20	0.41
1:B:278:ARG:NH2	3:B:718:HOH:O	2.54	0.41
1:A:125:LEU:HB3	1:A:216:LEU:HD21	2.03	0.41
1:B:65:LEU:HD23	1:B:65:LEU:C	2.41	0.40
1:B:69:GLU:OE1	1:B:87:GLN:OE1	2.39	0.40
1:B:125:LEU:HB3	1:B:216:LEU:HD21	2.03	0.40

There are no symmetry-related clashes.

## 5.3 Torsion angles [i](#)

### 5.3.1 Protein backbone [i](#)

In the following table, the Percentiles column shows the percent Ramachandran outliers of the chain as a percentile score with respect to all X-ray entries followed by that with respect to entries of similar resolution.

The Analysed column shows the number of residues for which the backbone conformation was analysed, and the total number of residues.

Mol	Chain	Analysed	Favoured	Allowed	Outliers	Percentiles	
1	A	493/537 (92%)	482 (98%)	9 (2%)	2 (0%)	34	22
1	B	492/537 (92%)	474 (96%)	16 (3%)	2 (0%)	34	22
All	All	985/1074 (92%)	956 (97%)	25 (2%)	4 (0%)	34	22

All (4) Ramachandran outliers are listed below:

Mol	Chain	Res	Type
1	A	459	CYS
1	B	460	SER
1	A	505	VAL
1	B	505	VAL

### 5.3.2 Protein sidechains [i](#)

In the following table, the Percentiles column shows the percent sidechain outliers of the chain as a percentile score with respect to all X-ray entries followed by that with respect to entries of similar resolution.

The Analysed column shows the number of residues for which the sidechain conformation was analysed, and the total number of residues.

Mol	Chain	Analysed	Rotameric	Outliers	Percentiles	
1	A	448/479 (94%)	441 (98%)	7 (2%)	62	56
1	B	448/479 (94%)	438 (98%)	10 (2%)	52	43
All	All	896/958 (94%)	879 (98%)	17 (2%)	57	49

All (17) residues with a non-rotameric sidechain are listed below:

Mol	Chain	Res	Type
1	A	162	ASP
1	A	198	LYS
1	A	314	PHE
1	A	362	ARG
1	A	368	VAL
1	A	413	ARG
1	A	458	HIS
1	B	3	SER
1	B	37	ASN

*Continued on next page...*

*Continued from previous page...*

Mol	Chain	Res	Type
1	B	52	THR
1	B	92	ASN
1	B	313	GLU
1	B	366	LYS
1	B	367	CYS
1	B	413	ARG
1	B	458	HIS
1	B	523	GLU

Sometimes sidechains can be flipped to improve hydrogen bonding and reduce clashes. All (5) such sidechains are listed below:

Mol	Chain	Res	Type
1	A	87	GLN
1	A	114	HIS
1	B	87	GLN
1	B	114	HIS
1	B	141	GLN

### 5.3.3 RNA [i](#)

There are no RNA molecules in this entry.

### 5.4 Non-standard residues in protein, DNA, RNA chains [i](#)

There are no non-standard protein/DNA/RNA residues in this entry.

### 5.5 Carbohydrates [i](#)

There are no monosaccharides in this entry.

### 5.6 Ligand geometry [i](#)

2 ligands are modelled in this entry.

In the following table, the Counts columns list the number of bonds (or angles) for which Mogul statistics could be retrieved, the number of bonds (or angles) that are observed in the model and the number of bonds (or angles) that are defined in the Chemical Component Dictionary. The Link column lists molecule types, if any, to which the group is linked. The Z score for a bond length (or angle) is the number of standard deviations the observed value is removed from the

expected value. A bond length (or angle) with  $|Z| > 2$  is considered an outlier worth inspection. RMSZ is the root-mean-square of all Z scores of the bond lengths (or angles).

Mol	Type	Chain	Res	Link	Bond lengths			Bond angles		
					Counts	RMSZ	# Z  > 2	Counts	RMSZ	# Z  > 2
2	A1H4T	B	601	-	28,30,30	0.84	2 (7%)	34,45,45	1.08	1 (2%)
2	A1H4T	A	601	-	28,30,30	0.82	2 (7%)	34,45,45	1.06	2 (5%)

In the following table, the Chirals column lists the number of chiral outliers, the number of chiral centers analysed, the number of these observed in the model and the number defined in the Chemical Component Dictionary. Similar counts are reported in the Torsion and Rings columns. '-' means no outliers of that kind were identified.

Mol	Type	Chain	Res	Link	Chirals	Torsions	Rings
2	A1H4T	B	601	-	3/3/4/4	0/8/29/29	0/6/5/5
2	A1H4T	A	601	-	-	2/8/29/29	0/6/5/5

All (4) bond length outliers are listed below:

Mol	Chain	Res	Type	Atoms	Z	Observed(Å)	Ideal(Å)
2	A	601	A1H4T	C11-N12	2.31	1.35	1.31
2	B	601	A1H4T	C11-N12	2.27	1.35	1.31
2	B	601	A1H4T	C18-C17	-2.16	1.38	1.41
2	A	601	A1H4T	C18-C17	-2.09	1.38	1.41

All (3) bond angle outliers are listed below:

Mol	Chain	Res	Type	Atoms	Z	Observed(°)	Ideal(°)
2	B	601	A1H4T	C10-C18-C17	-5.03	117.49	121.02
2	A	601	A1H4T	C10-C18-C17	-4.45	117.90	121.02
2	A	601	A1H4T	C10-N9-C4	2.15	123.55	121.18

All (3) chirality outliers are listed below:

Mol	Chain	Res	Type	Atom
2	B	601	A1H4T	C2
2	B	601	A1H4T	C7
2	B	601	A1H4T	C4

All (2) torsion outliers are listed below:

Mol	Chain	Res	Type	Atoms
2	A	601	A1H4T	C18-C10-N9-C7

*Continued on next page...*

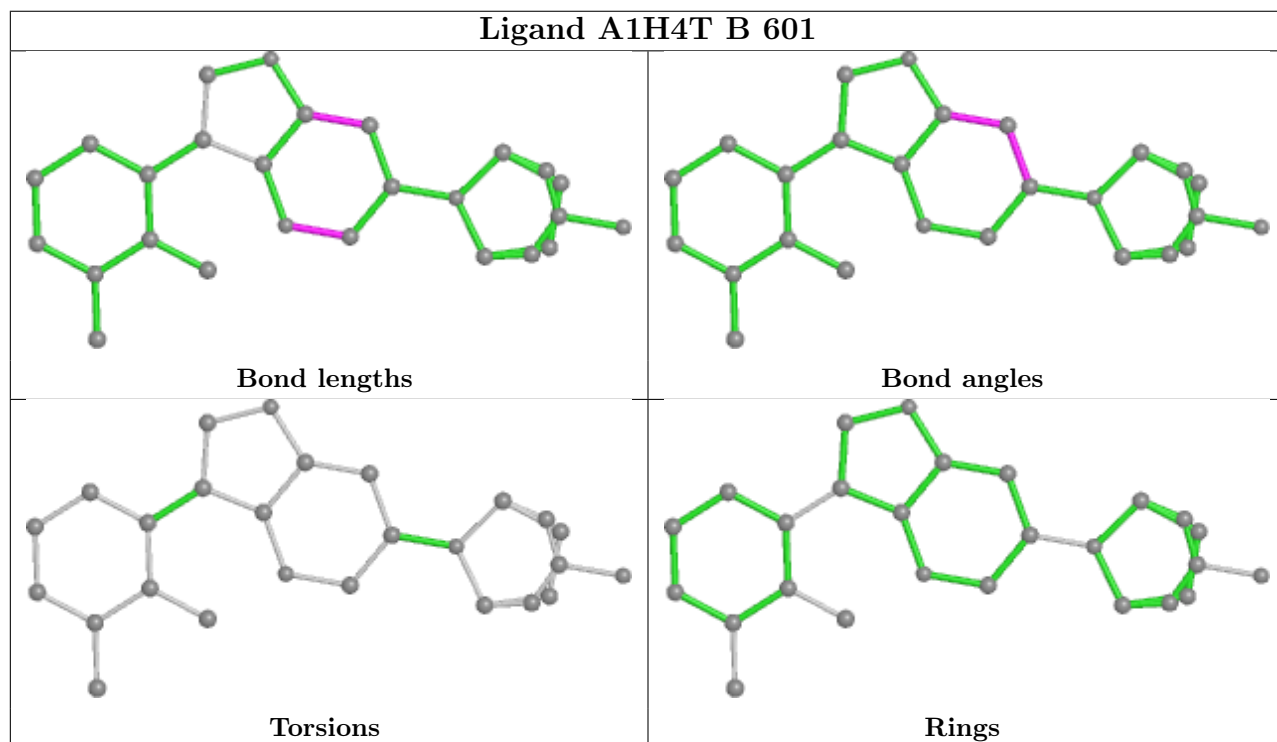
Continued from previous page...

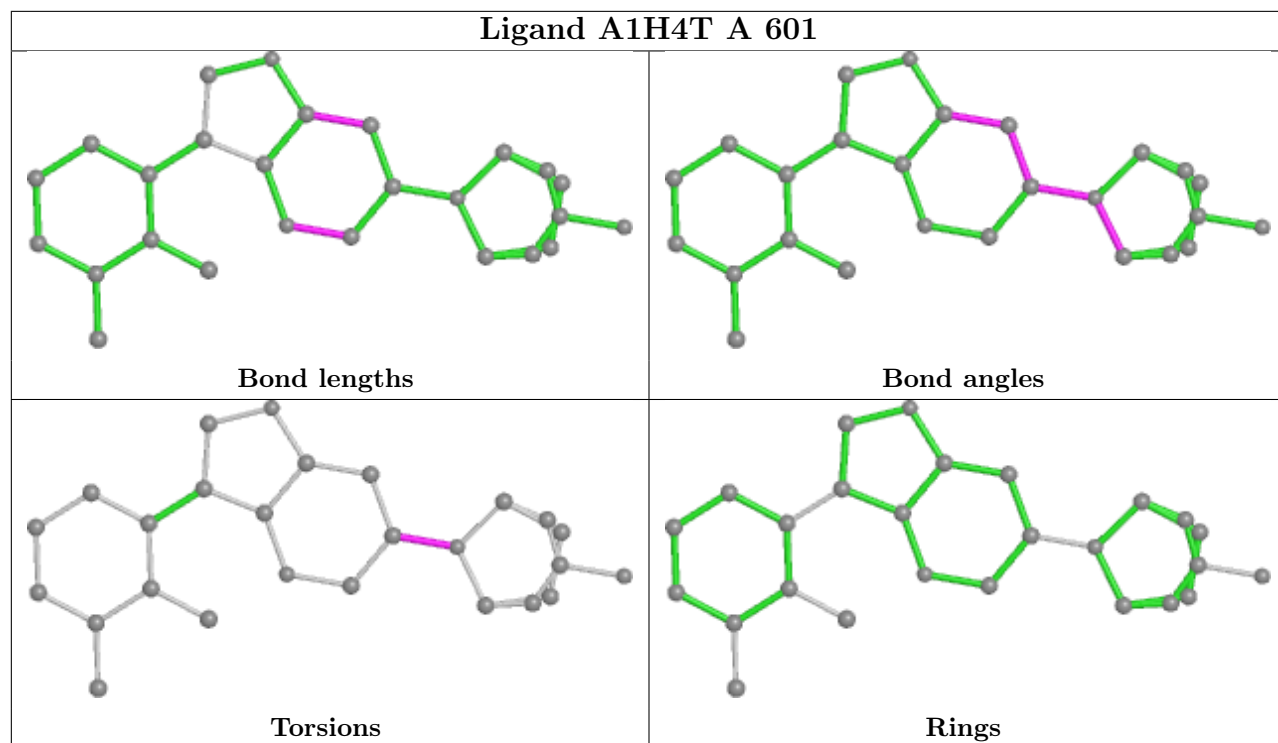
Mol	Chain	Res	Type	Atoms
2	A	601	A1H4T	C11-C10-N9-C7

There are no ring outliers.

No monomer is involved in short contacts.

The following is a two-dimensional graphical depiction of Mogul quality analysis of bond lengths, bond angles, torsion angles, and ring geometry for all instances of the Ligand of Interest. In addition, ligands with molecular weight > 250 and outliers as shown on the validation Tables will also be included. For torsion angles, if less than 5% of the Mogul distribution of torsion angles is within 10 degrees of the torsion angle in question, then that torsion angle is considered an outlier. Any bond that is central to one or more torsion angles identified as an outlier by Mogul will be highlighted in the graph. For rings, the root-mean-square deviation (RMSD) between the ring in question and similar rings identified by Mogul is calculated over all ring torsion angles. If the average RMSD is greater than 60 degrees and the minimal RMSD between the ring in question and any Mogul-identified rings is also greater than 60 degrees, then that ring is considered an outlier. The outliers are highlighted in purple. The color gray indicates Mogul did not find sufficient equivalents in the CSD to analyse the geometry.





## 5.7 Other polymers [i](#)

There are no such residues in this entry.

## 5.8 Polymer linkage issues [i](#)

There are no chain breaks in this entry.

## 6 Fit of model and data

### 6.1 Protein, DNA and RNA chains

In the following table, the column labelled ‘#RSRZ > 2’ contains the number (and percentage) of RSRZ outliers, followed by percent RSRZ outliers for the chain as percentile scores relative to all X-ray entries and entries of similar resolution. The OWAB column contains the minimum, median, 95<sup>th</sup> percentile and maximum values of the occupancy-weighted average B-factor per residue. The column labelled ‘Q < 0.9’ lists the number of (and percentage) of residues with an average occupancy less than 0.9.

Mol	Chain	Analysed	<RSRZ>	#RSRZ>2	OWAB(Å <sup>2</sup> )	Q<0.9
1	A	502/537 (93%)	0.28	36 (7%) <b>15</b> <b>16</b>	17, 37, 67, 93	0
1	B	504/537 (93%)	0.34	38 (7%) <b>14</b> <b>15</b>	18, 39, 68, 84	0
All	All	1006/1074 (93%)	0.31	74 (7%) <b>14</b> <b>15</b>	17, 38, 68, 93	0

All (74) RSRZ outliers are listed below:

Mol	Chain	Res	Type	RSRZ
1	A	162	ASP	6.9
1	A	314	PHE	6.2
1	A	155	ASP	6.1
1	B	362	ARG	5.9
1	B	164	LYS	5.4
1	B	154	GLY	5.4
1	A	93	GLY	5.4
1	B	177	LEU	5.3
1	A	205	THR	4.7
1	A	38	PRO	4.7
1	B	294	ASP	4.6
1	B	155	ASP	4.6
1	A	164	LYS	4.5
1	B	162	ASP	4.4
1	A	35	LYS	4.4
1	B	367	CYS	4.3
1	A	300	PRO	4.2
1	A	91	LYS	4.1
1	A	48	ASN	4.0
1	B	532	HIS	3.7
1	A	528	ARG	3.6
1	B	85	HIS	3.6
1	A	163	GLY	3.6
1	B	293	HIS	3.5

*Continued on next page...*

*Continued from previous page...*

<b>Mol</b>	<b>Chain</b>	<b>Res</b>	<b>Type</b>	<b>RSRZ</b>
1	A	124	LYS	3.5
1	A	248	TRP	3.4
1	B	86	GLY	3.4
1	B	364	LYS	3.4
1	B	301	VAL	3.4
1	A	157	LYS	3.3
1	B	92	ASN	3.3
1	B	426	HIS	3.2
1	B	296	ASP	3.2
1	B	248	TRP	3.1
1	B	120	LYS	3.0
1	A	301	VAL	3.0
1	A	156	ASP	3.0
1	A	294	ASP	3.0
1	B	161	ASN	2.9
1	B	205	THR	2.9
1	A	296	ASP	2.9
1	B	207	GLY	2.9
1	A	120	LYS	2.8
1	A	295	GLY	2.8
1	A	36	SER	2.8
1	B	314	PHE	2.8
1	B	368	VAL	2.7
1	B	206	LEU	2.7
1	A	92	ASN	2.7
1	A	14	VAL	2.7
1	B	211	GLN	2.7
1	B	361	GLU	2.6
1	A	299	GLU	2.6
1	A	94	ASP	2.6
1	A	165	SER	2.6
1	A	177	LEU	2.5
1	B	365	SER	2.5
1	B	141	GLN	2.5
1	B	93	GLY	2.5
1	A	298	ASN	2.5
1	A	95	VAL	2.4
1	B	87	GLN	2.4
1	B	163	GLY	2.4
1	B	359	GLU	2.3
1	B	275	ASN	2.3
1	B	527	ARG	2.3

*Continued on next page...*



*Continued from previous page...*

Mol	Chain	Res	Type	RSRZ
1	B	295	GLY	2.3
1	A	141	GLN	2.2
1	B	313	GLU	2.2
1	A	206	LEU	2.2
1	B	298	ASN	2.1
1	A	526	GLN	2.1
1	A	485	ASP	2.1
1	A	225	GLU	2.0

## 6.2 Non-standard residues in protein, DNA, RNA chains [i](#)

There are no non-standard protein/DNA/RNA residues in this entry.

## 6.3 Carbohydrates [i](#)

There are no monosaccharides in this entry.

## 6.4 Ligands [i](#)

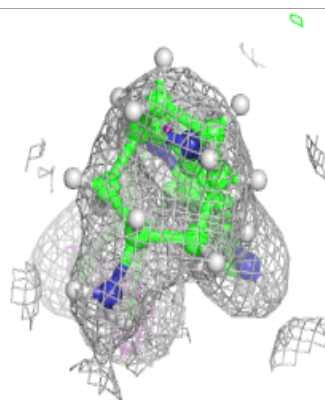
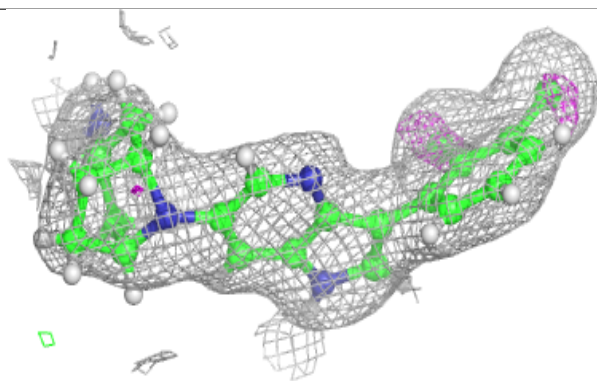
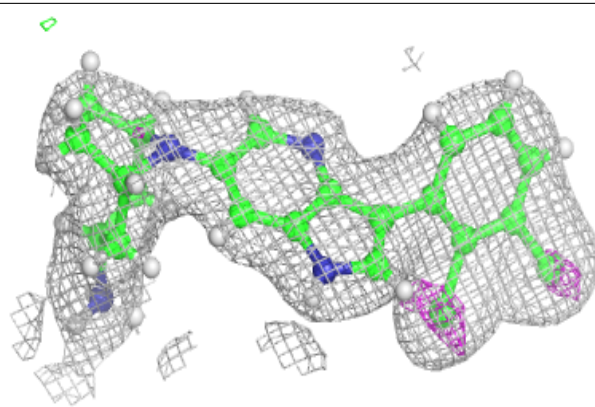
In the following table, the Atoms column lists the number of modelled atoms in the group and the number defined in the chemical component dictionary. The B-factors column lists the minimum, median, 95<sup>th</sup> percentile and maximum values of B factors of atoms in the group. The column labelled 'Q< 0.9' lists the number of atoms with occupancy less than 0.9.

Mol	Type	Chain	Res	Atoms	RSCC	RSR	B-factors(Å <sup>2</sup> )	Q<0.9
2	A1H4T	A	601	26/26	0.95	0.09	33,34,35,37	0
2	A1H4T	B	601	26/26	0.95	0.09	33,34,36,38	0

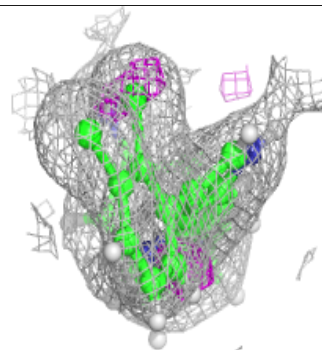
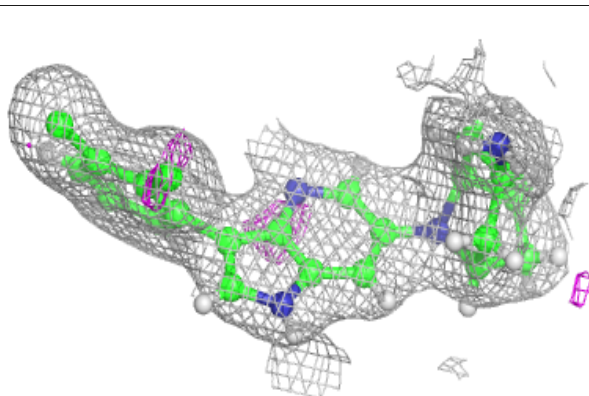
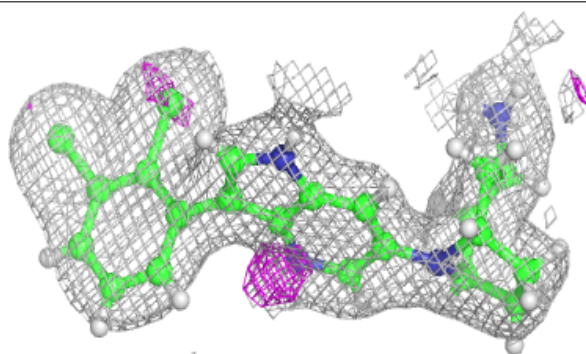
The following is a graphical depiction of the model fit to experimental electron density of all instances of the Ligand of Interest. In addition, ligands with molecular weight > 250 and outliers as shown on the geometry validation Tables will also be included. Each fit is shown from different orientation to approximate a three-dimensional view.

**Electron density around A1H4T A 601:**

$2mF_o-DF_c$  (at 0.7 rmsd) in gray  
 $mF_o-DF_c$  (at 3 rmsd) in purple (negative)  
and green (positive)

**Electron density around A1H4T B 601:**

$2mF_o-DF_c$  (at 0.7 rmsd) in gray  
 $mF_o-DF_c$  (at 3 rmsd) in purple (negative)  
and green (positive)



## 6.5 Other polymers [i](#)

There are no such residues in this entry.