



wwPDB X-ray Structure Validation Summary Report ⓘ

Feb 17, 2024 – 11:02 AM EST

PDB ID : 3S4Z
Title : Structure of a Y DNA-FANCI complex
Authors : Pavletich, N.P.
Deposited on : 2011-05-20
Resolution : 7.80 Å(reported)

This is a wwPDB X-ray Structure Validation Summary Report for a publicly released PDB entry.

We welcome your comments at validation@mail.wwpdb.org

A user guide is available at

<https://www.wwpdb.org/validation/2017/XrayValidationReportHelp>

with specific help available everywhere you see the ⓘ symbol.

The types of validation reports are described at

<http://www.wwpdb.org/validation/2017/FAQs#types>.

The following versions of software and data (see [references ⓘ](#)) were used in the production of this report:

MolProbity : 4.02b-467
Xtriage (Phenix) : 1.13
EDS : 2.36
Percentile statistics : 20191225.v01 (using entries in the PDB archive December 25th 2019)
Refmac : 5.8.0158
CCP4 : 7.0.044 (Gargrove)
Ideal geometry (proteins) : Engh & Huber (2001)
Ideal geometry (DNA, RNA) : Parkinson et al. (1996)
Validation Pipeline (wwPDB-VP) : 2.36

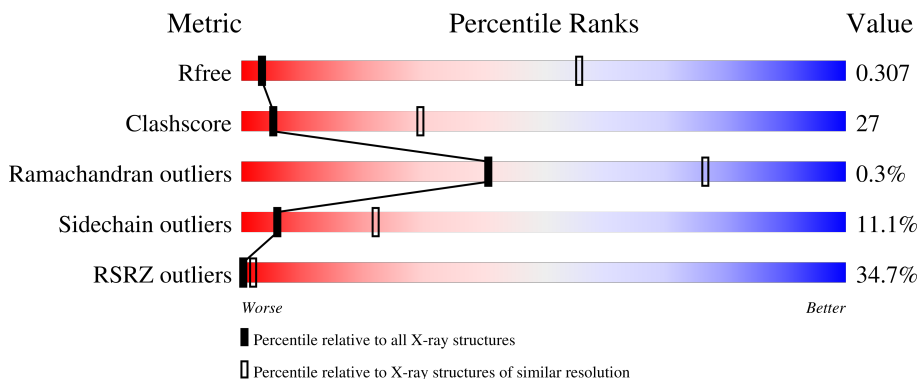
1 Overall quality at a glance

The following experimental techniques were used to determine the structure:

X-RAY DIFFRACTION

The reported resolution of this entry is 7.80 Å.

Percentile scores (ranging between 0-100) for global validation metrics of the entry are shown in the following graphic. The table shows the number of entries on which the scores are based.



Metric	Whole archive (#Entries)	Similar resolution (#Entries, resolution range(Å))
R_{free}	130704	1005 (11.50-3.90)
Clashscore	141614	1070 (11.50-3.90)
Ramachandran outliers	138981	1003 (11.50-3.90)
Sidechain outliers	138945	1003 (11.50-3.86)
RSRZ outliers	127900	1004 (9.50-3.80)

The table below summarises the geometric issues observed across the polymeric chains and their fit to the electron density. The red, orange, yellow and green segments of the lower bar indicate the fraction of residues that contain outliers for ≥ 3 , 2, 1 and 0 types of geometric quality criteria respectively. A grey segment represents the fraction of residues that are not modelled. The numeric value for each fraction is indicated below the corresponding segment, with a dot representing fractions $\leq 5\%$. The upper red bar (where present) indicates the fraction of residues that have poor fit to the electron density. The numeric value is given above the bar.

Mol	Chain	Length	Quality of chain
1	A	1308	
1	B	1308	
1	C	1308	

2 Entry composition i

There is only 1 type of molecule in this entry. The entry contains 26814 atoms, of which 0 are hydrogens and 0 are deuteriums.

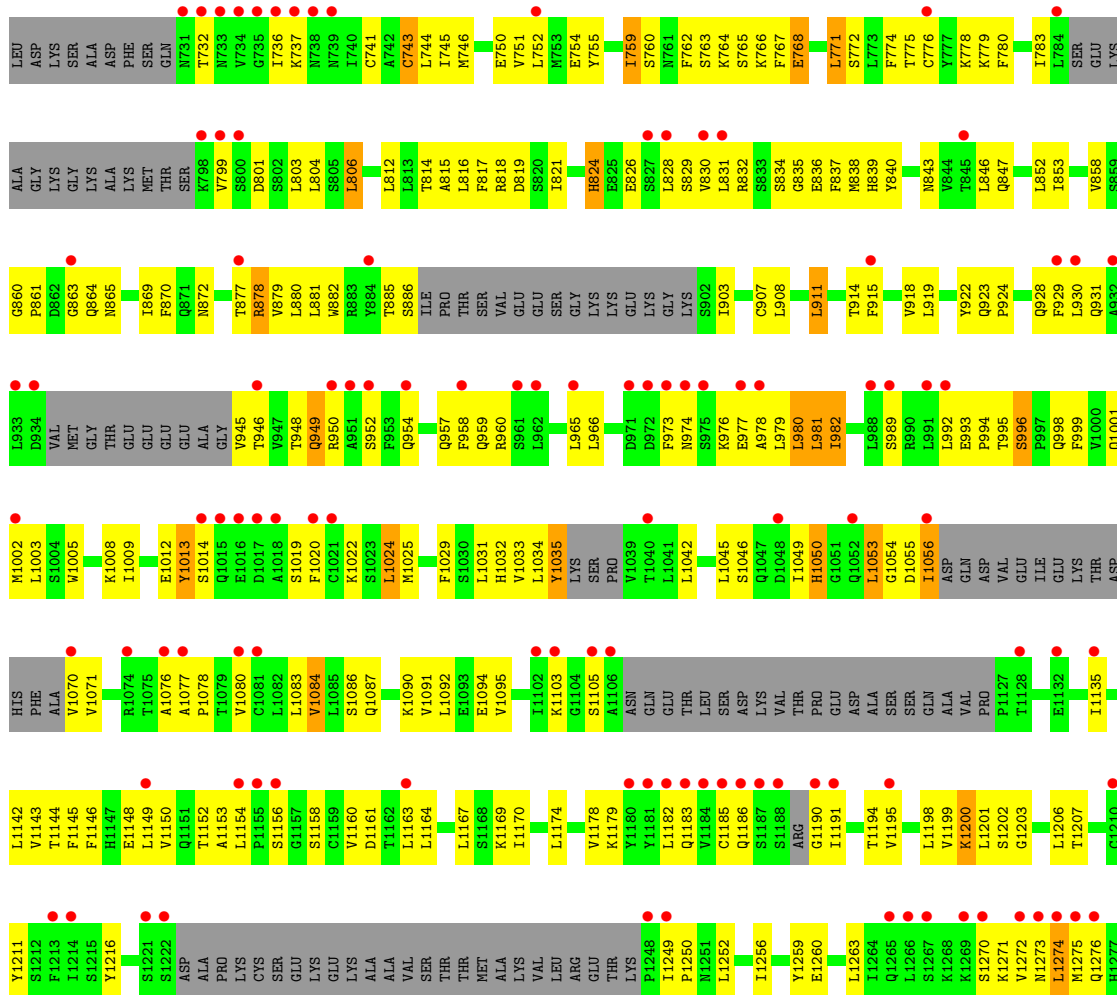
In the tables below, the ZeroOcc column contains the number of atoms modelled with zero occupancy, the AltConf column contains the number of residues with at least one atom in alternate conformation and the Trace column contains the number of residues modelled with at most 2 atoms.

- Molecule 1 is a protein called dna repair 1.

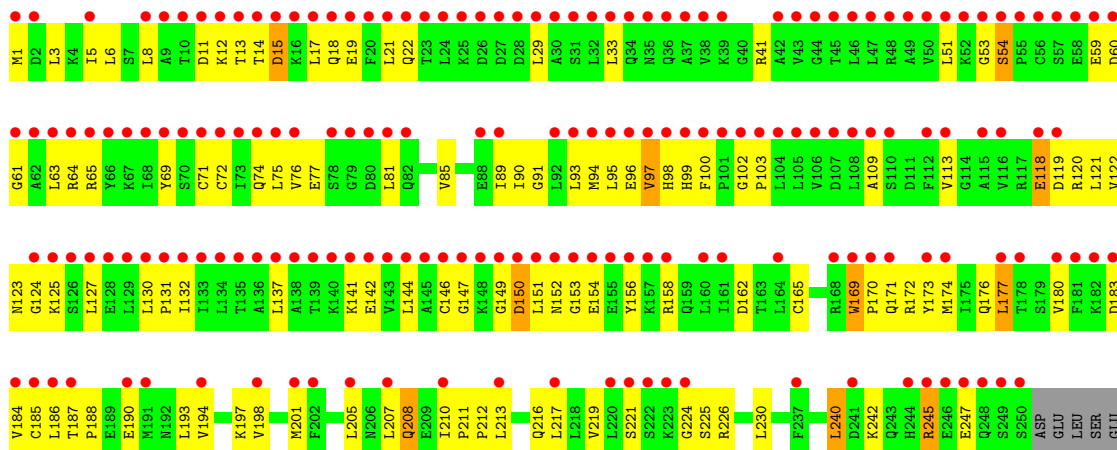
Mol	Chain	Residues	Atoms					ZeroOcc	AltConf	Trace
			Total	C	N	O	S			
1	A	1131	8938	5748	1485	1652	53	0	0	0
1	B	1131	8938	5748	1485	1652	53	0	0	0
1	C	1131	8938	5748	1485	1652	53	0	0	0

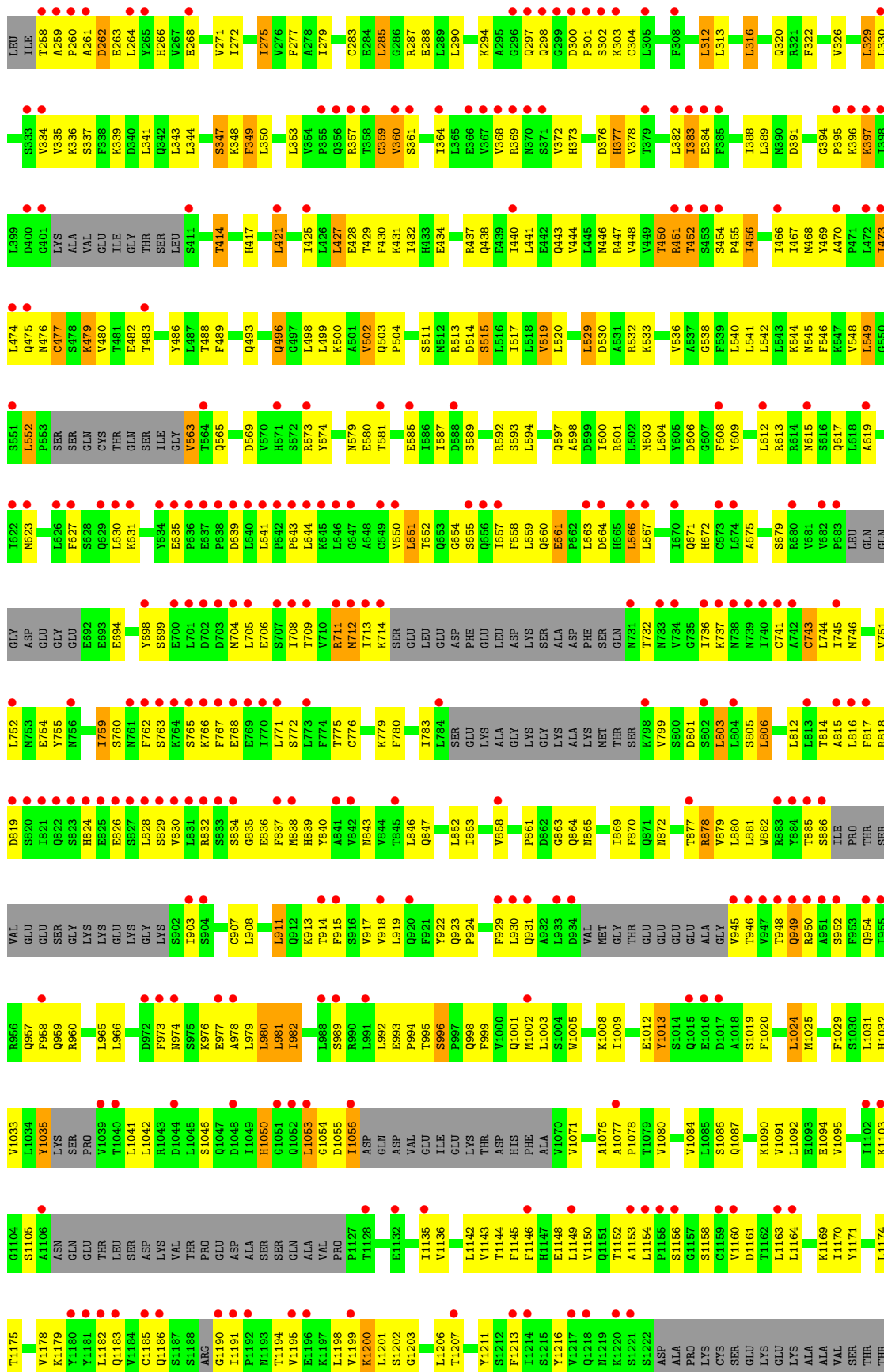
There are 18 discrepancies between the modelled and reference sequences:

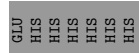
Chain	Residue	Modelled	Actual	Comment	Reference
A	1303	HIS	-	expression tag	UNP Q8K368
A	1304	HIS	-	expression tag	UNP Q8K368
A	1305	HIS	-	expression tag	UNP Q8K368
A	1306	HIS	-	expression tag	UNP Q8K368
A	1307	HIS	-	expression tag	UNP Q8K368
A	1308	HIS	-	expression tag	UNP Q8K368
B	1303	HIS	-	expression tag	UNP Q8K368
B	1304	HIS	-	expression tag	UNP Q8K368
B	1305	HIS	-	expression tag	UNP Q8K368
B	1306	HIS	-	expression tag	UNP Q8K368
B	1307	HIS	-	expression tag	UNP Q8K368
B	1308	HIS	-	expression tag	UNP Q8K368
C	1303	HIS	-	expression tag	UNP Q8K368
C	1304	HIS	-	expression tag	UNP Q8K368
C	1305	HIS	-	expression tag	UNP Q8K368
C	1306	HIS	-	expression tag	UNP Q8K368
C	1307	HIS	-	expression tag	UNP Q8K368
C	1308	HIS	-	expression tag	UNP Q8K368



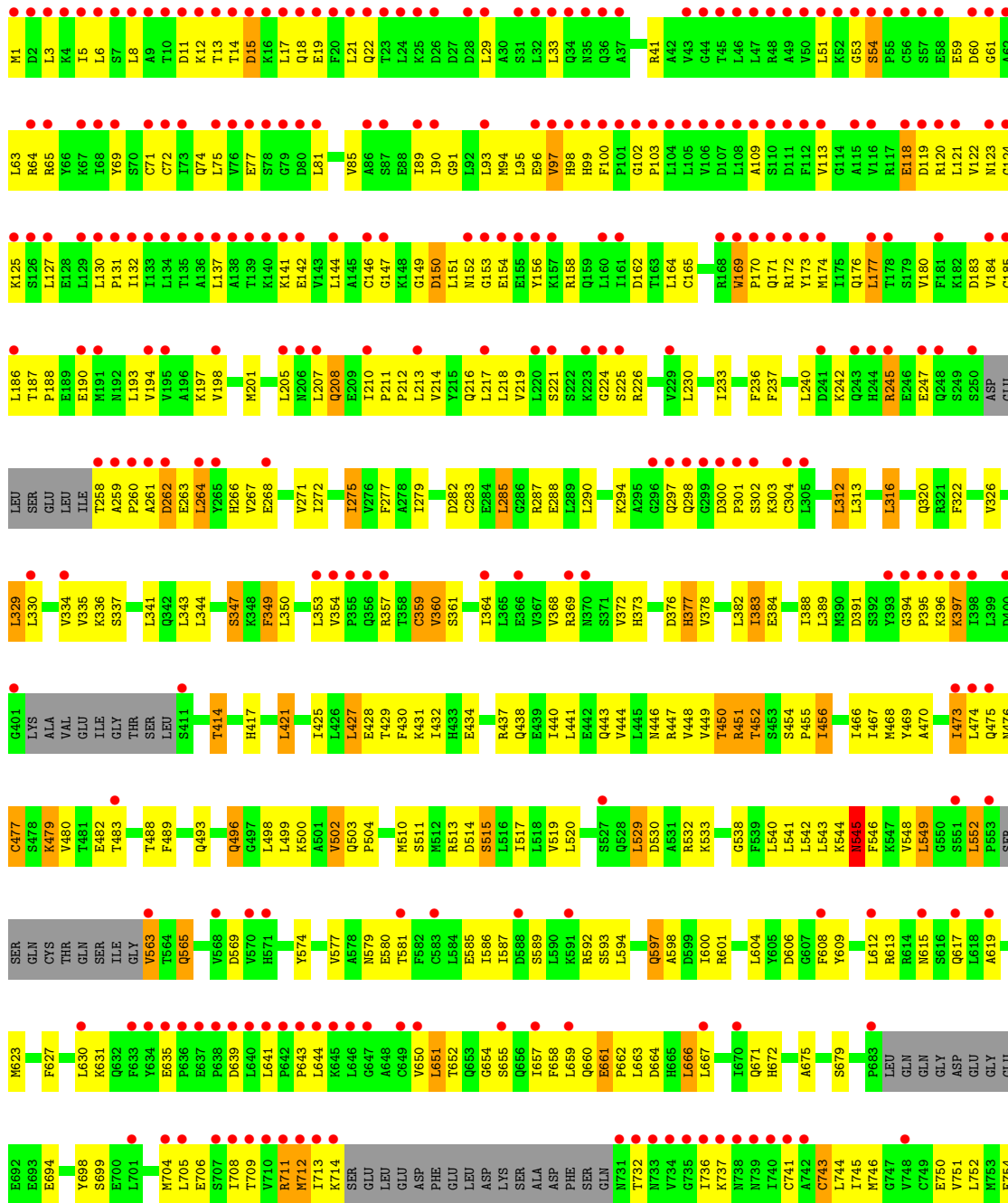
• Molecule 1: dna repair 1

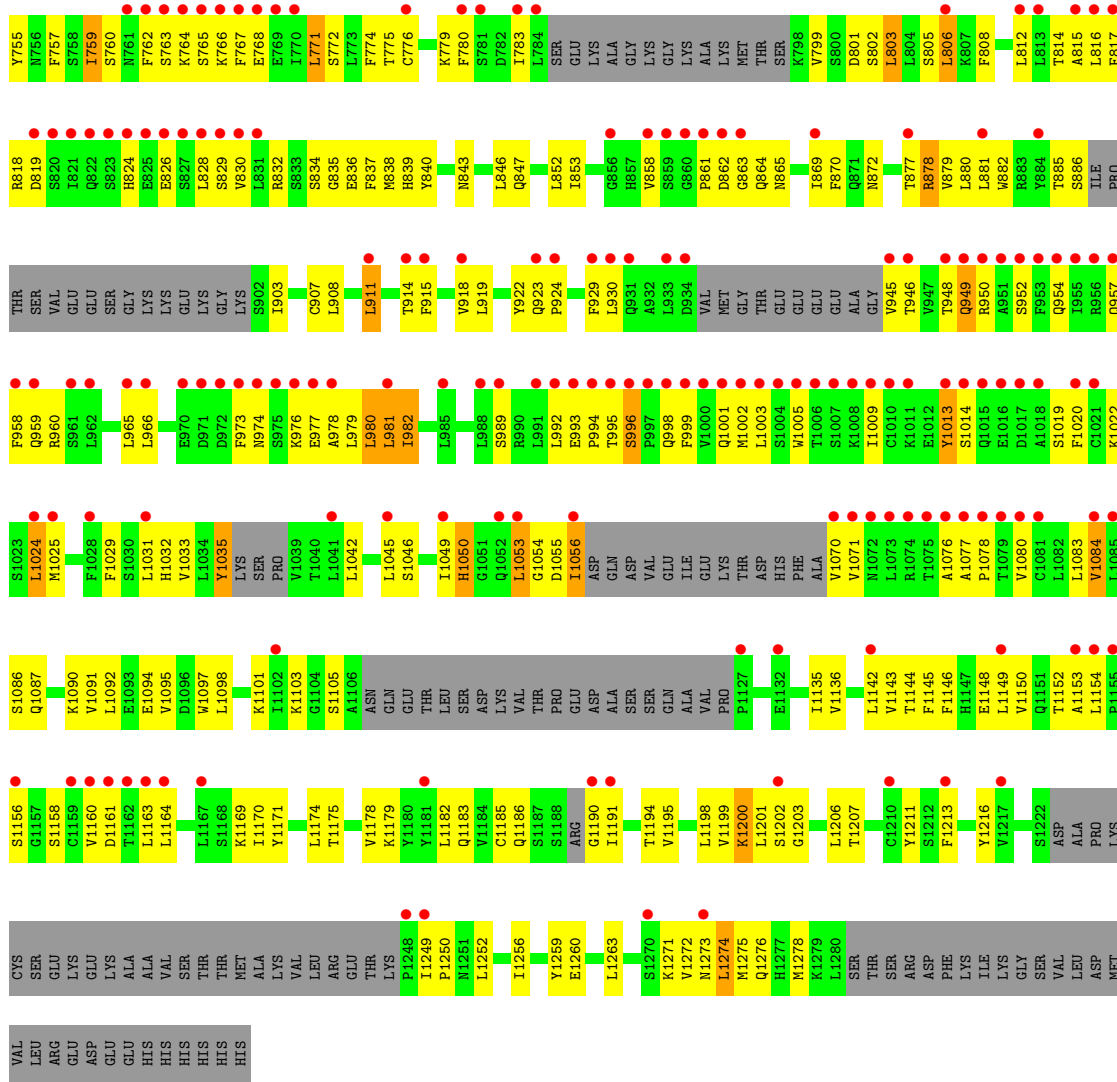






● Molecule 1: dna repair 1





4 Data and refinement statistics

Property	Value	Source
Space group	I 21 21 21	Depositor
Cell constants a, b, c, α , β , γ	235.20Å 307.90Å 375.90Å 90.00° 90.00° 90.00°	Depositor
Resolution (Å)	33.00 – 7.80 50.02 – 7.80	Depositor EDS
% Data completeness (in resolution range)	85.3 (33.00-7.80) 85.2 (50.02-7.80)	Depositor EDS
R_{merge}	(Not available)	Depositor
R_{sym}	(Not available)	Depositor
$\langle I/\sigma(I) \rangle$ ¹	3.35 (at 7.37Å)	Xtrriage
Refinement program	REFMAC 5.5.0109	Depositor
R, R_{free}	0.310 , 0.324 0.303 , 0.307	Depositor DCC
R_{free} test set	604 reflections (4.10%)	wwPDB-VP
Wilson B-factor (Å ²)	473.6	Xtrriage
Anisotropy	0.209	Xtrriage
Bulk solvent k_{sol} (e/Å ³), B_{sol} (Å ²)	0.40 , 619.6	EDS
L-test for twinning ²	$\langle L \rangle = 0.47$, $\langle L^2 \rangle = 0.30$	Xtrriage
Estimated twinning fraction	No twinning to report.	Xtrriage
F_o, F_c correlation	0.73	EDS
Total number of atoms	26814	wwPDB-VP
Average B, all atoms (Å ²)	413.0	wwPDB-VP

Xtrriage's analysis on translational NCS is as follows: *The largest off-origin peak in the Patterson function is 7.76% of the height of the origin peak. No significant pseudotranslation is detected.*

¹Intensities estimated from amplitudes.

²Theoretical values of $\langle |L| \rangle$, $\langle L^2 \rangle$ for acentric reflections are 0.5, 0.333 respectively for untwinned datasets, and 0.375, 0.2 for perfectly twinned datasets.

5 Model quality i

5.1 Standard geometry i

The Z score for a bond length (or angle) is the number of standard deviations the observed value is removed from the expected value. A bond length (or angle) with $|Z| > 5$ is considered an outlier worth inspection. RMSZ is the root-mean-square of all Z scores of the bond lengths (or angles).

Mol	Chain	Bond lengths		Bond angles	
		RMSZ	# Z >5	RMSZ	# Z >5
1	A	0.42	4/9075 (0.0%)	0.62	6/12252 (0.0%)
1	B	0.26	2/9073 (0.0%)	0.46	0/12246
1	C	0.27	3/9074 (0.0%)	0.48	3/12249 (0.0%)
All	All	0.33	9/27222 (0.0%)	0.52	9/36747 (0.0%)

Chiral center outliers are detected by calculating the chiral volume of a chiral center and verifying if the center is modelled as a planar moiety or with the opposite hand. A planarity outlier is detected by checking planarity of atoms in a peptide group, atoms in a mainchain group or atoms of a sidechain that are expected to be planar.

Mol	Chain	#Chirality outliers	#Planarity outliers
1	A	0	1
1	B	0	1
1	C	0	2
All	All	0	4

The worst 5 of 9 bond length outliers are listed below:

Mol	Chain	Res	Type	Atoms	Z	Observed(Å)	Ideal(Å)
1	A	224	GLY	C-N	25.03	1.91	1.34
1	A	545	ASN	C-N	18.55	1.76	1.34
1	B	320	GLN	CD-NE2	-6.82	1.15	1.32
1	A	320	GLN	CD-NE2	-6.82	1.15	1.32
1	C	320	GLN	CD-NE2	-6.80	1.15	1.32

The worst 5 of 9 bond angle outliers are listed below:

Mol	Chain	Res	Type	Atoms	Z	Observed(°)	Ideal(°)
1	A	224	GLY	O-C-N	-34.14	68.08	122.70
1	A	224	GLY	CA-C-N	21.55	164.61	117.20
1	A	224	GLY	C-N-CA	15.07	159.37	121.70
1	C	545	ASN	C-N-CA	-11.18	93.76	121.70
1	A	545	ASN	O-C-N	10.27	139.13	122.70

There are no chirality outliers.

All (4) planarity outliers are listed below:

Mol	Chain	Res	Type	Group
1	A	1053	LEU	Peptide
1	B	1053	LEU	Peptide
1	C	1053	LEU	Peptide
1	C	545	ASN	Mainchain

5.2 Too-close contacts [i](#)

In the following table, the Non-H and H(model) columns list the number of non-hydrogen atoms and hydrogen atoms in the chain respectively. The H(added) column lists the number of hydrogen atoms added and optimized by MolProbity. The Clashes column lists the number of clashes within the asymmetric unit, whereas Symm-Clashes lists symmetry-related clashes.

Mol	Chain	Non-H	H(model)	H(added)	Clashes	Symm-Clashes
1	A	8938	0	9247	507	13
1	B	8938	0	9247	452	0
1	C	8938	0	9248	527	0
All	All	26814	0	27742	1452	13

The all-atom clashscore is defined as the number of clashes found per 1000 atoms (including hydrogen atoms). The all-atom clashscore for this structure is 27.

The worst 5 of 1452 close contacts within the same asymmetric unit are listed below, sorted by their clash magnitude.

Atom-1	Atom-2	Interatomic distance (Å)	Clash overlap (Å)
1:A:208:GLN:HE22	1:A:263:GLU:CG	1.18	1.57
1:C:210:ILE:CD1	1:C:236:PHE:CE2	1.90	1.52
1:C:207:LEU:HD22	1:C:237:PHE:CE2	1.48	1.46
1:A:545:ASN:C	1:A:546:PHE:N	1.76	1.37
1:A:208:GLN:NE2	1:A:263:GLU:HG2	1.38	1.34

The worst 5 of 13 symmetry-related close contacts are listed below. The label for Atom-2 includes the symmetry operator and encoded unit-cell translations to be applied.

Atom-1	Atom-2	Interatomic distance (Å)	Clash overlap (Å)
1:A:281:LEU:CD1	1:A:486:TYR:CZ[7_455]	0.71	1.49
1:A:281:LEU:CD1	1:A:486:TYR:CE2[7_455]	0.84	1.36
1:A:280:LYS:NZ	1:A:446:ASN:OD1[7_455]	1.39	0.81

Continued on next page...

Continued from previous page...

Atom-1	Atom-2	Interatomic distance (Å)	Clash overlap (Å)
1:A:280:LYS:NZ	1:A:446:ASN:CG[7_455]	1.47	0.73
1:A:281:LEU:CD1	1:A:486:TYR:CE1[7_455]	1.61	0.59

5.3 Torsion angles [i](#)

5.3.1 Protein backbone [i](#)

In the following table, the Percentiles column shows the percent Ramachandran outliers of the chain as a percentile score with respect to all X-ray entries followed by that with respect to entries of similar resolution.

The Analysed column shows the number of residues for which the backbone conformation was analysed, and the total number of residues.

Mol	Chain	Analysed	Favoured	Allowed	Outliers	Percentiles
1	A	1103/1308 (84%)	1019 (92%)	80 (7%)	4 (0%)	34 72
1	B	1099/1308 (84%)	1016 (92%)	80 (7%)	3 (0%)	41 77
1	C	1101/1308 (84%)	1019 (93%)	79 (7%)	3 (0%)	41 77
All	All	3303/3924 (84%)	3054 (92%)	239 (7%)	10 (0%)	41 77

5 of 10 Ramachandran outliers are listed below:

Mol	Chain	Res	Type
1	A	122	VAL
1	A	150	ASP
1	A	225	SER
1	B	122	VAL
1	B	150	ASP

5.3.2 Protein sidechains [i](#)

In the following table, the Percentiles column shows the percent sidechain outliers of the chain as a percentile score with respect to all X-ray entries followed by that with respect to entries of similar resolution.

The Analysed column shows the number of residues for which the sidechain conformation was analysed, and the total number of residues.

Mol	Chain	Analysed	Rotameric	Outliers	Percentiles
1	A	1029/1188 (87%)	914 (89%)	115 (11%)	6 22

Continued on next page...

Continued from previous page...

Mol	Chain	Analysed	Rotameric	Outliers	Percentiles	
1	B	1029/1188 (87%)	914 (89%)	115 (11%)	6	22
1	C	1029/1188 (87%)	915 (89%)	114 (11%)	6	22
All	All	3087/3564 (87%)	2743 (89%)	344 (11%)	6	22

5 of 344 residues with a non-rotameric sidechain are listed below:

Mol	Chain	Res	Type
1	C	19	GLU
1	C	529	LEU
1	C	119	ASP
1	C	349	PHE
1	C	661	GLU

Sometimes sidechains can be flipped to improve hydrogen bonding and reduce clashes. 5 of 17 such sidechains are listed below:

Mol	Chain	Res	Type
1	C	377	HIS
1	C	672	HIS
1	B	377	HIS
1	B	597	GLN
1	B	672	HIS

5.3.3 RNA [i](#)

There are no RNA molecules in this entry.

5.4 Non-standard residues in protein, DNA, RNA chains [i](#)

There are no non-standard protein/DNA/RNA residues in this entry.

5.5 Carbohydrates [i](#)

There are no monosaccharides in this entry.

5.6 Ligand geometry [i](#)

There are no ligands in this entry.

5.7 Other polymers [i](#)

There are no such residues in this entry.

5.8 Polymer linkage issues [i](#)

The following chains have linkage breaks:

Mol	Chain	Number of breaks
1	B	2
1	A	2
1	C	1

All chain breaks are listed below:

Model	Chain	Residue-1	Atom-1	Residue-2	Atom-2	Distance (Å)
1	C	224:GLY	C	225:SER	N	4.08
1	B	224:GLY	C	225:SER	N	2.63
1	B	545:ASN	C	546:PHE	N	2.09
1	A	224:GLY	C	225:SER	N	1.91
1	A	545:ASN	C	546:PHE	N	1.76

6 Fit of model and data [i](#)

6.1 Protein, DNA and RNA chains [i](#)

In the following table, the column labelled ‘#RSRZ > 2’ contains the number (and percentage) of RSRZ outliers, followed by percent RSRZ outliers for the chain as percentile scores relative to all X-ray entries and entries of similar resolution. The OWAB column contains the minimum, median, 95th percentile and maximum values of the occupancy-weighted average B-factor per residue. The column labelled ‘Q < 0.9’ lists the number of (and percentage) of residues with an average occupancy less than 0.9.

Mol	Chain	Analysed	<RSRZ>	#RSRZ>2	OWAB(Å ²)	Q<0.9
1	A	1131/1308 (86%)	1.37	289 (25%) 0 2	267, 382, 546, 649	0
1	B	1131/1308 (86%)	2.17	453 (40%) 0 1	285, 384, 602, 757	0
1	C	1131/1308 (86%)	2.05	437 (38%) 0 1	302, 421, 620, 719	0
All	All	3393/3924 (86%)	1.87	1179 (34%) 0 2	267, 397, 598, 757	0

The worst 5 of 1179 RSRZ outliers are listed below:

Mol	Chain	Res	Type	RSRZ
1	B	102	GLY	19.1
1	C	105	LEU	13.8
1	B	49	ALA	13.7
1	B	99	HIS	13.3
1	B	52	LYS	13.3

6.2 Non-standard residues in protein, DNA, RNA chains [i](#)

There are no non-standard protein/DNA/RNA residues in this entry.

6.3 Carbohydrates [i](#)

There are no monosaccharides in this entry.

6.4 Ligands [i](#)

There are no ligands in this entry.

6.5 Other polymers [i](#)

There are no such residues in this entry.