



Full wwPDB X-ray Structure Validation Report ⓘ

Feb 28, 2024 – 08:04 PM EST

PDB ID : 5S4Q
Title : Tubulin-Z422344882-complex
Authors : Muehlethaler, T.; Gioia, D.; Prota, A.E.; Sharpe, M.E.; Cavalli, A.; Steinmetz, M.O.
Deposited on : 2020-11-08
Resolution : 2.59 Å(reported)

This is a Full wwPDB X-ray Structure Validation Report for a publicly released PDB entry.

We welcome your comments at validation@mail.wwpdb.org

A user guide is available at

<https://www.wwpdb.org/validation/2017/XrayValidationReportHelp>

with specific help available everywhere you see the ⓘ symbol.

The types of validation reports are described at

<http://www.wwpdb.org/validation/2017/FAQs#types>.

The following versions of software and data (see [references ⓘ](#)) were used in the production of this report:

MolProbity : 4.02b-467
Mogul : 1.8.5 (274361), CSD as541be (2020)
Xtriage (Phenix) : 1.13
EDS : 2.36
buster-report : 1.1.7 (2018)
Percentile statistics : 20191225.v01 (using entries in the PDB archive December 25th 2019)
Refmac : 5.8.0158
CCP4 : 7.0.044 (Gargrove)
Ideal geometry (proteins) : Engh & Huber (2001)
Ideal geometry (DNA, RNA) : Parkinson et al. (1996)
Validation Pipeline (wwPDB-VP) : 2.36

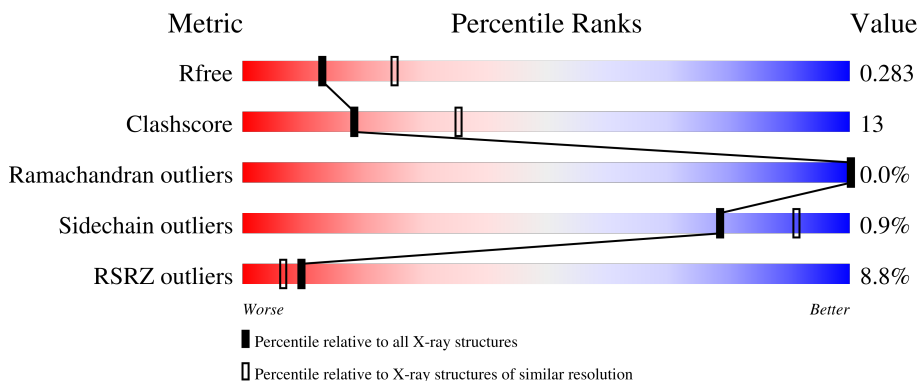
1 Overall quality at a glance i

The following experimental techniques were used to determine the structure:

X-RAY DIFFRACTION

The reported resolution of this entry is 2.59 Å.

Percentile scores (ranging between 0-100) for global validation metrics of the entry are shown in the following graphic. The table shows the number of entries on which the scores are based.



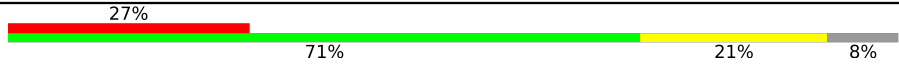
Metric	Whole archive (#Entries)	Similar resolution (#Entries, resolution range(Å))
R_{free}	130704	3163 (2.60-2.60)
Clashscore	141614	3518 (2.60-2.60)
Ramachandran outliers	138981	3455 (2.60-2.60)
Sidechain outliers	138945	3455 (2.60-2.60)
RSRZ outliers	127900	3104 (2.60-2.60)

The table below summarises the geometric issues observed across the polymeric chains and their fit to the electron density. The red, orange, yellow and green segments of the lower bar indicate the fraction of residues that contain outliers for ≥ 3 , 2, 1 and 0 types of geometric quality criteria respectively. A grey segment represents the fraction of residues that are not modelled. The numeric value for each fraction is indicated below the corresponding segment, with a dot representing fractions $\leq 5\%$. The upper red bar (where present) indicates the fraction of residues that have poor fit to the electron density. The numeric value is given above the bar.

Mol	Chain	Length	Quality of chain
1	A	451	 4% 67% 30%
1	C	451	 0% 70% 27%
2	B	445	 3% 68% 27%
2	D	445	 9% 68% 29%
3	E	143	 6% 69% 17% 14%

Continued on next page...

Continued from previous page...

Mol	Chain	Length	Quality of chain
4	F	384	 <p>A horizontal bar chart showing the quality distribution of chain F. The bar is divided into four segments: a red segment (27%), a green segment (71%), a yellow segment (21%), and a grey segment (8%). The percentages are labeled above and below the segments.</p>

2 Entry composition i

There are 12 unique types of molecules in this entry. The entry contains 18013 atoms, of which 11 are hydrogens and 0 are deuteriums.

In the tables below, the ZeroOcc column contains the number of atoms modelled with zero occupancy, the AltConf column contains the number of residues with at least one atom in alternate conformation and the Trace column contains the number of residues modelled with at most 2 atoms.

- Molecule 1 is a protein called Tubulin alpha-1B chain.

Mol	Chain	Residues	Atoms					ZeroOcc	AltConf	Trace
			Total	C	N	O	S			
1	A	438	Total	C	N	O	S	0	0	0
			3424	2167	582	653	22			
1	C	440	Total	C	N	O	S	0	1	0
			3443	2178	585	657	23			

- Molecule 2 is a protein called Tubulin beta-2B chain.

Mol	Chain	Residues	Atoms					ZeroOcc	AltConf	Trace
			Total	C	N	O	S			
2	B	425	Total	C	N	O	S	12	1	0
			3359	2109	577	646	27			
2	D	431	Total	C	N	O	S	5	0	0
			3368	2113	575	653	27			

- Molecule 3 is a protein called Stathmin-4.

Mol	Chain	Residues	Atoms					ZeroOcc	AltConf	Trace
			Total	C	N	O	S			
3	E	123	Total	C	N	O	S	0	0	0
			1014	625	183	201	5			

There are 2 discrepancies between the modelled and reference sequences:

Chain	Residue	Modelled	Actual	Comment	Reference
E	3	MET	-	initiating methionine	UNP P63043
E	4	ALA	-	expression tag	UNP P63043

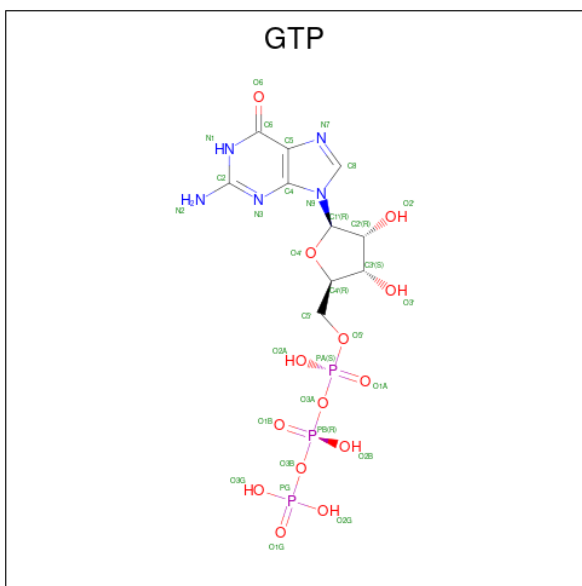
- Molecule 4 is a protein called Tubulin-Tyrosine Ligase.

Mol	Chain	Residues	Atoms					ZeroOcc	AltConf	Trace
			Total	C	N	O	S			
4	F	352	Total	C	N	O	S	0	0	0
			2877	1843	495	525	14			

There are 6 discrepancies between the modelled and reference sequences:

Chain	Residue	Modelled	Actual	Comment	Reference
F	379	HIS	-	expression tag	UNP E1BQ43
F	380	HIS	-	expression tag	UNP E1BQ43
F	381	HIS	-	expression tag	UNP E1BQ43
F	382	HIS	-	expression tag	UNP E1BQ43
F	383	HIS	-	expression tag	UNP E1BQ43
F	384	HIS	-	expression tag	UNP E1BQ43

- Molecule 5 is GUANOSINE-5'-TRIPHOSPHATE (three-letter code: GTP) (formula: $C_{10}H_{16}N_5O_{14}P_3$).



Mol	Chain	Residues	Atoms					ZeroOcc	AltConf
			Total	C	N	O	P		
5	A	1	Total	C	N	O	P	0	0
			32	10	5	14	3		
5	C	1	Total	C	N	O	P	0	0
			32	10	5	14	3		

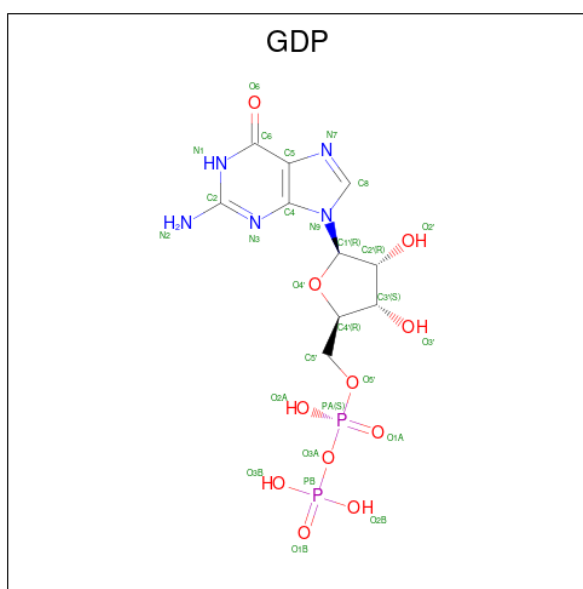
- Molecule 6 is MAGNESIUM ION (three-letter code: MG) (formula: Mg).

Mol	Chain	Residues	Atoms		ZeroOcc	AltConf
			Total	Mg		
6	A	1	Total	Mg	0	0
			1	1		
6	B	1	Total	Mg	0	0
			1	1		
6	D	2	Total	Mg	0	0
			2	2		
6	F	1	Total	Mg	0	0
			1	1		

- Molecule 7 is CALCIUM ION (three-letter code: CA) (formula: Ca).

Mol	Chain	Residues	Atoms	ZeroOcc	AltConf
7	A	2	Total Ca 2 2	0	0
7	B	1	Total Ca 1 1	0	0
7	C	1	Total Ca 1 1	0	0

- Molecule 8 is GUANOSINE-5'-DIPHOSPHATE (three-letter code: GDP) (formula: C₁₀H₁₅N₅O₁₁P₂).



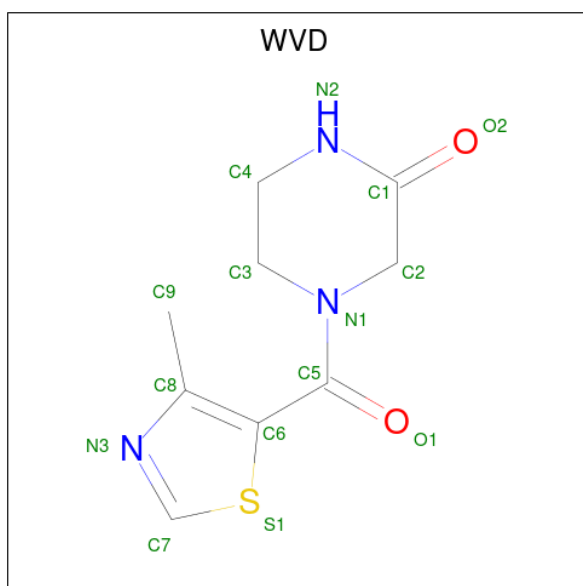
Mol	Chain	Residues	Atoms	ZeroOcc	AltConf
8	B	1	Total C N O P 28 10 5 11 2	0	0
8	D	1	Total C N O P 28 10 5 11 2	0	0

- Molecule 9 is 2-(N-MORPHOLINO)-ETHANESULFONIC ACID (three-letter code: MES) (formula: C₆H₁₃NO₄S).



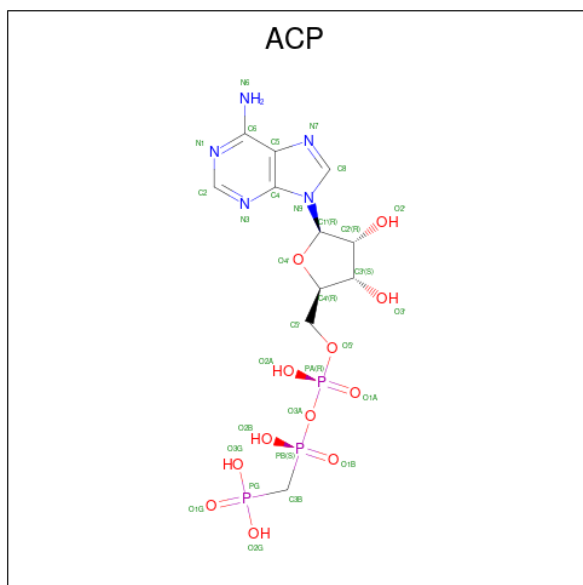
Mol	Chain	Residues	Atoms					ZeroOcc	AltConf
			Total	C	N	O	S		
9	B	1	12	6	1	4	1	0	0

- Molecule 10 is 4-(4-methyl-1,3-thiazole-5-carbonyl)piperazin-2-one (three-letter code: WVD) (formula: $C_9H_{11}N_3O_2S$) (labeled as "Ligand of Interest" by depositor).



Mol	Chain	Residues	Atoms					ZeroOcc	AltConf	
			Total	C	H	N	O			S
10	B	1	26	9	11	3	2	1	0	0

- Molecule 11 is PHOSPHOMETHYLPHOSPHONIC ACID ADENYLATE ESTER (three-letter code: ACP) (formula: $C_{11}H_{18}N_5O_{12}P_3$).



Mol	Chain	Residues	Atoms					ZeroOcc	AltConf
			Total	C	N	O	P		
11	F	1	31	11	5	12	3	0	0

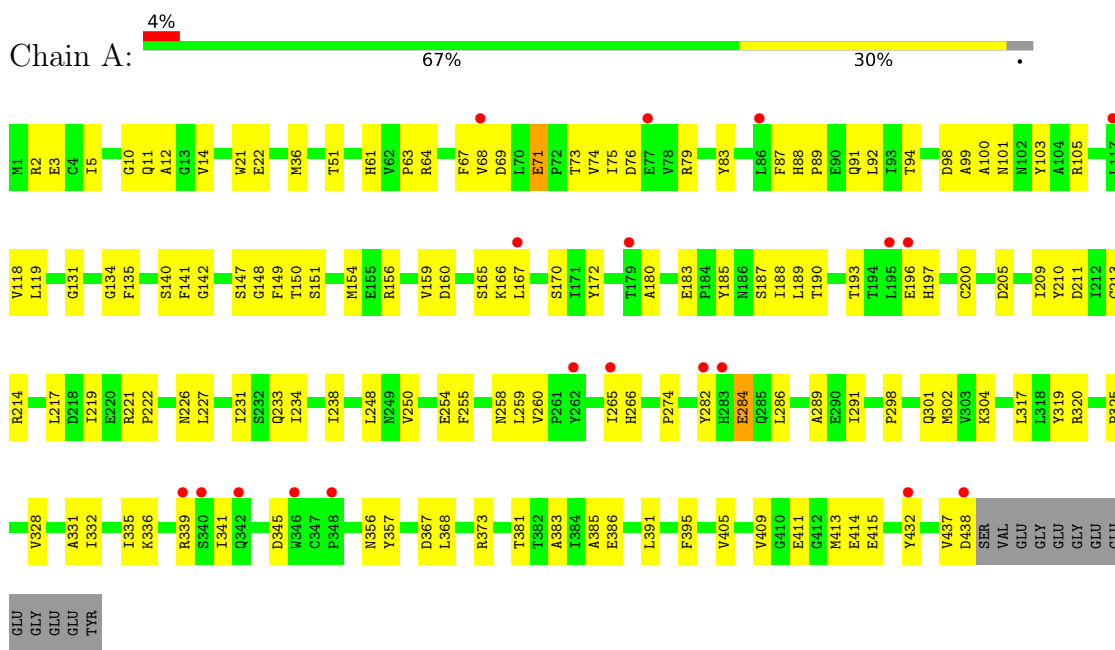
- Molecule 12 is water.

Mol	Chain	Residues	Atoms		ZeroOcc	AltConf
12	A	56	Total	O	0	0
			56	56		
12	B	71	Total	O	0	0
			71	71		
12	C	164	Total	O	0	0
			164	164		
12	D	24	Total	O	0	0
			24	24		
12	E	11	Total	O	0	0
			11	11		
12	F	4	Total	O	0	0
			4	4		

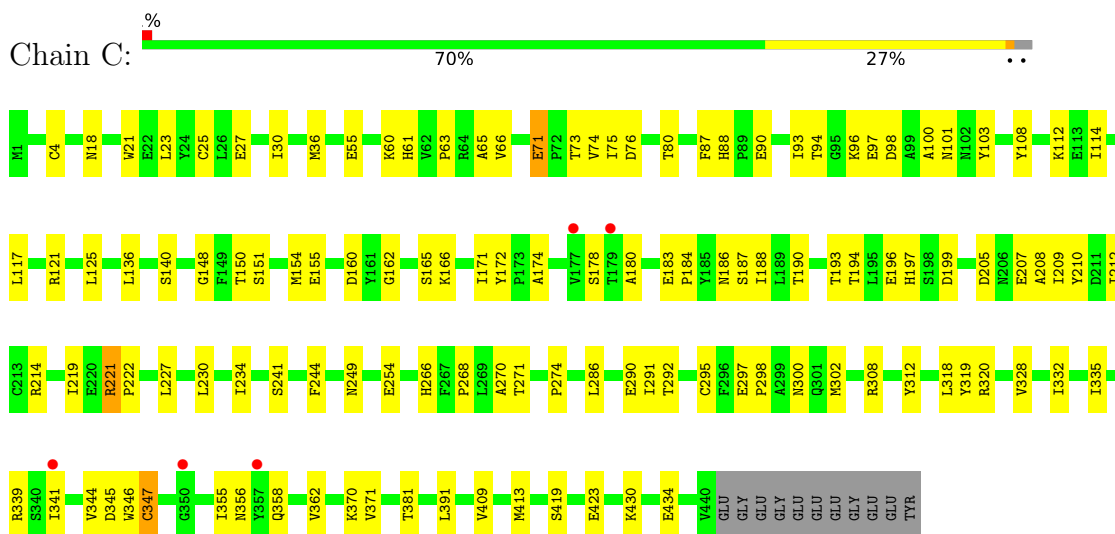
3 Residue-property plots i

These plots are drawn for all protein, RNA, DNA and oligosaccharide chains in the entry. The first graphic for a chain summarises the proportions of the various outlier classes displayed in the second graphic. The second graphic shows the sequence view annotated by issues in geometry and electron density. Residues are color-coded according to the number of geometric quality criteria for which they contain at least one outlier: green = 0, yellow = 1, orange = 2 and red = 3 or more. A red dot above a residue indicates a poor fit to the electron density ($RSRZ > 2$). Stretches of 2 or more consecutive residues without any outlier are shown as a green connector. Residues present in the sample, but not in the model, are shown in grey.

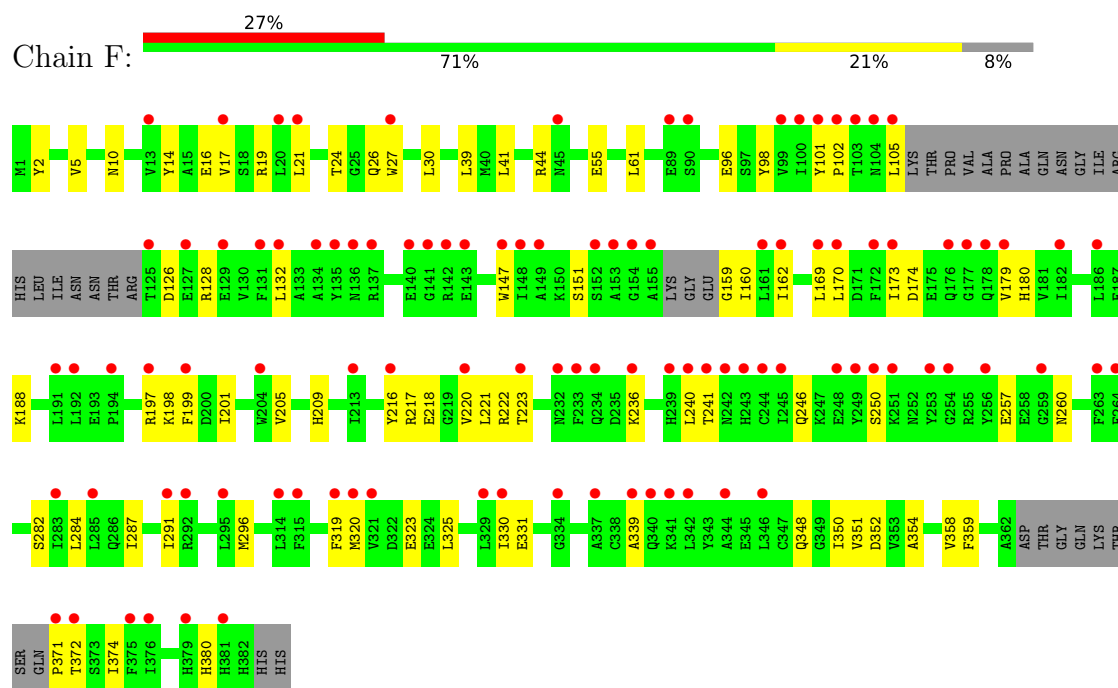
- Molecule 1: Tubulin alpha-1B chain



- Molecule 1: Tubulin alpha-1B chain



- Molecule 2: Tubulin beta-2B chain



4 Data and refinement statistics

Property	Value	Source
Space group	P 21 21 21	Depositor
Cell constants a, b, c, α , β , γ	104.74Å 158.30Å 179.61Å 90.00° 90.00° 90.00°	Depositor
Resolution (Å)	118.76 – 2.59 87.35 – 2.59	Depositor EDS
% Data completeness (in resolution range)	97.9 (118.76-2.59) 97.9 (87.35-2.59)	Depositor EDS
R_{merge}	0.17	Depositor
R_{sym}	(Not available)	Depositor
$\langle I/\sigma(I) \rangle$ ¹	1.68 (at 2.58Å)	Xtrriage
Refinement program	PHENIX 1.18.2_3874	Depositor
R, R_{free}	0.226 , 0.281 0.226 , 0.283	Depositor DCC
R_{free} test set	1958 reflections (2.14%)	wwPDB-VP
Wilson B-factor (Å ²)	52.8	Xtrriage
Anisotropy	0.344	Xtrriage
Bulk solvent k_{sol} (e/Å ³), B_{sol} (Å ²)	0.32 , 45.9	EDS
L-test for twinning ²	$\langle L \rangle = 0.51$, $\langle L^2 \rangle = 0.34$	Xtrriage
Estimated twinning fraction	No twinning to report.	Xtrriage
F_o, F_c correlation	0.93	EDS
Total number of atoms	18013	wwPDB-VP
Average B, all atoms (Å ²)	63.0	wwPDB-VP

Xtrriage's analysis on translational NCS is as follows: *The largest off-origin peak in the Patterson function is 2.56% of the height of the origin peak. No significant pseudotranslation is detected.*

¹Intensities estimated from amplitudes.

²Theoretical values of $\langle |L| \rangle$, $\langle L^2 \rangle$ for acentric reflections are 0.5, 0.333 respectively for untwinned datasets, and 0.375, 0.2 for perfectly twinned datasets.

5 Model quality [i](#)

5.1 Standard geometry [i](#)

Bond lengths and bond angles in the following residue types are not validated in this section: GDP, WVD, GTP, CA, MES, MG, ACP

The Z score for a bond length (or angle) is the number of standard deviations the observed value is removed from the expected value. A bond length (or angle) with $|Z| > 5$ is considered an outlier worth inspection. RMSZ is the root-mean-square of all Z scores of the bond lengths (or angles).

Mol	Chain	Bond lengths		Bond angles	
		RMSZ	# Z >5	RMSZ	# Z >5
1	A	0.25	0/3502	0.42	0/4754
1	C	0.26	0/3521	0.43	0/4780
2	B	0.26	0/3433	0.42	0/4647
2	D	0.25	0/3442	0.40	0/4664
3	E	0.23	0/1022	0.34	0/1356
4	F	0.24	0/2944	0.40	0/3978
All	All	0.25	0/17864	0.41	0/24179

There are no bond length outliers.

There are no bond angle outliers.

There are no chirality outliers.

There are no planarity outliers.

5.2 Too-close contacts [i](#)

In the following table, the Non-H and H(model) columns list the number of non-hydrogen atoms and hydrogen atoms in the chain respectively. The H(added) column lists the number of hydrogen atoms added and optimized by MolProbity. The Clashes column lists the number of clashes within the asymmetric unit, whereas Symm-Clashes lists symmetry-related clashes.

Mol	Chain	Non-H	H(model)	H(added)	Clashes	Symm-Clashes
1	A	3424	0	3335	97	0
1	C	3443	0	3352	90	0
2	B	3359	0	3235	101	0
2	D	3368	0	3236	99	0
3	E	1014	0	1029	20	0
4	F	2877	0	2839	67	0
5	A	32	0	12	1	0

Continued on next page...

Continued from previous page...

Mol	Chain	Non-H	H(model)	H(added)	Clashes	Symm-Clashes
5	C	32	0	12	1	0
6	A	1	0	0	0	0
6	B	1	0	0	0	0
6	D	2	0	0	0	0
6	F	1	0	0	0	0
7	A	2	0	0	0	0
7	B	1	0	0	0	0
7	C	1	0	0	0	0
8	B	28	0	12	2	0
8	D	28	0	12	3	0
9	B	12	0	12	1	0
10	B	15	11	0	3	0
11	F	31	0	14	2	0
12	A	56	0	0	7	0
12	B	71	0	0	5	0
12	C	164	0	0	6	0
12	D	24	0	0	2	0
12	E	11	0	0	1	0
12	F	4	0	0	0	0
All	All	18002	11	17100	461	0

The all-atom clashscore is defined as the number of clashes found per 1000 atoms (including hydrogen atoms). The all-atom clashscore for this structure is 13.

All (461) close contacts within the same asymmetric unit are listed below, sorted by their clash magnitude.

Atom-1	Atom-2	Interatomic distance (Å)	Clash overlap (Å)
1:C:221:ARG:HG3	2:D:325:MET:HG2	1.46	0.97
4:F:241:THR:HG1	11:F:401:ACP:HO3'	1.10	0.96
1:A:71:GLU:OE2	1:A:73:THR:OG1	1.93	0.86
2:B:274:PRO:HB3	2:B:286:LEU:HD22	1.59	0.85
4:F:102:PRO:HG2	4:F:105:LEU:HD13	1.59	0.83
1:A:335:ILE:HG23	1:A:339:ARG:HG3	1.61	0.83
1:C:209:ILE:HD11	1:C:302:MET:HE3	1.60	0.83
2:D:295:MET:HE2	2:D:377:PHE:HB2	1.61	0.81
2:B:83:PHE:O	2:B:86:ILE:HG22	1.82	0.79
2:B:2:ARG:O	2:B:133:GLN:NE2	2.16	0.77
1:A:172:TYR:HB3	1:A:205:ASP:HA	1.65	0.77
2:D:208:ALA:O	2:D:212:ILE:HG13	1.85	0.77
1:A:336:LYS:HG3	3:E:24:LEU:HD13	1.67	0.76
2:D:136:GLN:HA	2:D:167:ASN:O	1.85	0.76

Continued on next page...

Continued from previous page...

Atom-1	Atom-2	Interatomic distance (Å)	Clash overlap (Å)
4:F:236:LYS:HB3	4:F:240:LEU:HD13	1.67	0.75
4:F:10:ASN:HB2	4:F:44:ARG:HH22	1.51	0.75
2:D:248:LEU:HD21	2:D:352:LYS:HB3	1.69	0.73
2:D:347:ILE:HG22	2:D:350:ASN:HB3	1.70	0.73
2:D:217:LEU:HA	2:D:277:SER:HB3	1.70	0.72
1:C:4[A]:CYS:SG	1:C:136:LEU:HG	2.29	0.72
2:D:83:PHE:O	2:D:86:ILE:HG22	1.90	0.72
3:E:48:GLU:HG2	3:E:52:LYS:HE3	1.71	0.71
2:D:332:MET:O	2:D:336:GLN:HG3	1.91	0.71
4:F:320:MET:HG3	4:F:330:ILE:HD11	1.71	0.71
1:C:76:ASP:O	1:C:80:THR:HG22	1.91	0.70
1:C:298:PRO:HG2	1:C:308:ARG:NH2	2.06	0.70
1:C:93:ILE:HD11	1:C:121:ARG:HG3	1.74	0.70
2:D:432:TYR:OH	12:D:601:HOH:O	2.10	0.70
4:F:16:GLU:OE2	4:F:19:ARG:NH2	2.25	0.69
4:F:132:LEU:HD21	4:F:170:LEU:HD11	1.74	0.69
5:C:501:GTP:O1B	12:C:601:HOH:O	2.10	0.69
1:C:151:SER:HB2	1:C:193:THR:CG2	2.23	0.69
2:B:202:TYR:CZ	2:B:270:PRO:HB3	2.28	0.69
3:E:85:LYS:O	3:E:89:GLU:HG3	1.92	0.69
4:F:128:ARG:NH2	4:F:174:ASP:OD1	2.26	0.68
2:B:147:SER:HG	2:B:190:SER:HG	1.40	0.67
2:B:415:GLU:OE1	12:B:601:HOH:O	2.11	0.67
1:C:209:ILE:HD11	1:C:302:MET:CE	2.23	0.67
1:A:88:HIS:HB2	1:A:89:PRO:HD2	1.77	0.67
2:D:147:SER:HB2	2:D:190:SER:OG	1.93	0.67
2:D:334:ASN:HD21	2:D:338:LYS:HE3	1.57	0.67
2:D:154:ILE:HG23	2:D:166:MET:HG2	1.77	0.66
2:D:69:ASP:O	2:D:94:PHE:HA	1.95	0.66
2:D:397:ALA:HA	2:D:400:ARG:NH1	2.10	0.66
2:D:210:TYR:CE1	2:D:222:PRO:HG2	2.30	0.66
4:F:188:LYS:HD3	4:F:323:GLU:OE2	1.97	0.65
1:A:166:LYS:HE2	1:A:197:HIS:O	1.97	0.65
2:B:193:GLN:HB3	12:B:613:HOH:O	1.96	0.65
1:A:210:TYR:CE1	1:A:222:PRO:HD2	2.32	0.65
1:A:211:ASP:OD2	1:A:304:LYS:NZ	2.17	0.65
4:F:101:TYR:N	4:F:126:ASP:OD1	2.21	0.65
4:F:331:GLU:OE2	11:F:401:ACP:O3G	2.15	0.65
1:A:36:MET:HB3	1:A:61:HIS:CE1	2.32	0.64
1:C:75:ILE:HD12	1:C:94:THR:HG22	1.79	0.64
1:C:165:SER:HA	1:C:199:ASP:OD2	1.97	0.64

Continued on next page...

Continued from previous page...

Atom-1	Atom-2	Interatomic distance (Å)	Clash overlap (Å)
2:B:306:ASP:HB3	2:B:309:HIS:ND1	2.12	0.64
2:D:172:MET:HG3	2:D:387:LEU:HD11	1.79	0.64
1:A:141:PHE:HB3	1:A:187:SER:OG	1.98	0.64
2:D:6:HIS:CD2	2:D:21:TRP:HE1	2.17	0.63
2:D:152:LEU:O	2:D:156:LYS:HG2	1.99	0.63
1:A:291:ILE:HD13	1:A:373:ARG:HG3	1.80	0.63
2:B:15:GLN:NE2	8:B:501:GDP:O6	2.32	0.63
1:C:160:ASP:OD1	12:C:602:HOH:O	2.15	0.63
2:D:11:GLN:O	2:D:15:GLN:HG2	1.99	0.63
4:F:371:PRO:HA	4:F:372:THR:O	1.98	0.63
1:C:187:SER:HB3	1:C:391:LEU:HD21	1.81	0.63
3:E:85:LYS:NZ	12:E:201:HOH:O	2.32	0.63
1:C:93:ILE:HG22	1:C:114:ILE:HD11	1.80	0.62
2:D:327:GLU:O	2:D:331:GLN:HG2	1.99	0.62
2:D:145:THR:HB	8:D:502:GDP:O2B	1.98	0.62
4:F:197:ARG:NH1	4:F:257:GLU:OE2	2.22	0.62
1:A:22:GLU:HG3	1:A:83:TYR:HE2	1.65	0.62
3:E:48:GLU:CG	3:E:52:LYS:HE3	2.29	0.62
2:D:115:VAL:HG23	2:D:153:LEU:HD23	1.82	0.61
1:C:234:ILE:HG12	1:C:302:MET:HE2	1.81	0.61
2:B:69:ASP:O	2:B:94:PHE:HA	2.00	0.61
1:A:226:ASN:ND2	1:A:367:ASP:OD2	2.31	0.61
2:B:136:GLN:HA	2:B:167:ASN:O	2.00	0.60
1:C:162:GLY:HA2	3:E:94:ILE:HD11	1.83	0.60
2:B:21:TRP:CZ3	2:B:63:PRO:HB3	2.36	0.60
4:F:222:ARG:O	4:F:241:THR:HB	2.00	0.60
1:C:312:TYR:CD2	1:C:341:ILE:HG23	2.37	0.60
2:B:202:TYR:CE2	2:B:238:VAL:HG11	2.37	0.60
1:A:103:TYR:CE2	1:A:148:GLY:HA2	2.37	0.60
2:B:188:THR:HG23	2:B:425:MET:HE2	1.82	0.60
2:D:171:VAL:HA	2:D:204:ILE:O	2.02	0.60
1:A:356:ASN:HB2	12:A:625:HOH:O	1.99	0.60
2:D:311:ARG:NH1	2:D:436:GLN:O	2.33	0.60
2:B:26:ASP:OD1	2:B:369:ARG:NH2	2.34	0.60
1:A:22:GLU:HG3	1:A:83:TYR:CE2	2.37	0.59
1:A:141:PHE:O	1:A:147:SER:HB3	2.02	0.59
1:C:320:ARG:HA	1:C:356:ASN:O	2.02	0.59
1:A:142:GLY:HA3	1:A:183:GLU:OE2	2.03	0.59
1:C:271:THR:HG21	1:C:295:CYS:O	2.03	0.59
2:D:312:TYR:O	2:D:344:VAL:HG22	2.02	0.59
2:B:274:PRO:HB3	2:B:286:LEU:CD2	2.30	0.59

Continued on next page...

Continued from previous page...

Atom-1	Atom-2	Interatomic distance (Å)	Clash overlap (Å)
2:D:163:ASP:O	2:D:253:ARG:NH2	2.36	0.59
1:C:172:TYR:HB3	1:C:205:ASP:HA	1.84	0.58
1:C:362:VAL:HG22	1:C:370:LYS:HD3	1.85	0.58
2:B:432:TYR:OH	12:B:602:HOH:O	2.16	0.58
4:F:371:PRO:CA	4:F:372:THR:HB	2.33	0.58
4:F:147:TRP:HB2	4:F:169:LEU:HD11	1.85	0.58
3:E:72:LEU:O	3:E:76:ARG:HG2	2.04	0.58
2:D:21:TRP:CZ3	2:D:63:PRO:HB3	2.39	0.58
3:E:75:LYS:NZ	3:E:79:GLU:OE2	2.37	0.58
2:B:270:PRO:HG2	2:B:302:MET:HB2	1.86	0.58
1:A:414:GLU:HB3	12:A:642:HOH:O	2.03	0.57
2:B:269:MET:HE1	2:B:307:PRO:HG3	1.86	0.57
2:D:218:LYS:O	2:D:219:LEU:HD23	2.04	0.57
2:D:269:MET:HG3	2:D:303:ALA:HB3	1.85	0.57
4:F:371:PRO:HA	4:F:372:THR:HB	1.84	0.57
4:F:320:MET:CG	4:F:330:ILE:HD11	2.34	0.57
2:B:38:GLY:HA3	2:B:45:GLN:OE1	2.04	0.57
2:B:413:MET:HE1	2:B:418:PHE:CE1	2.40	0.57
4:F:128:ARG:O	4:F:132:LEU:HG	2.05	0.57
1:C:166:LYS:HE2	1:C:197:HIS:O	2.05	0.56
1:C:214:ARG:HG2	1:C:219:ILE:O	2.05	0.56
1:A:159:VAL:HG12	1:A:160:ASP:OD1	2.06	0.56
2:B:278:ARG:HG2	2:B:282:GLN:NE2	2.21	0.56
1:C:174:ALA:HB1	1:C:207:GLU:HB2	1.88	0.56
4:F:159:GLY:C	4:F:160:ILE:HD12	2.26	0.56
2:D:1:MET:CE	2:D:50:ASN:HB2	2.35	0.56
2:B:36:TYR:CD1	2:B:46:LEU:HD21	2.40	0.56
1:C:270:ALA:O	1:C:302:MET:HG2	2.06	0.56
2:D:2:ARG:HB3	2:D:133:GLN:HG2	1.88	0.56
4:F:350:ILE:O	4:F:354:ALA:HB3	2.06	0.56
1:A:328:VAL:O	1:A:332:ILE:HG13	2.06	0.56
1:C:209:ILE:HG23	1:C:230:LEU:HD23	1.88	0.55
2:D:213:CYS:HA	2:D:217:LEU:HD12	1.87	0.55
2:B:108:TYR:CD2	3:E:82:VAL:HG11	2.41	0.55
1:A:151:SER:HB2	1:A:193:THR:OG1	2.07	0.55
1:C:100:ALA:HA	2:D:254:LYS:HG3	1.88	0.55
1:A:335:ILE:CG2	1:A:339:ARG:HG3	2.35	0.55
1:C:244:PHE:CD1	1:C:358:GLN:HG2	2.42	0.55
2:B:167:ASN:ND2	2:B:200:GLU:HB2	2.22	0.55
2:D:271:GLY:HA3	2:D:377:PHE:HB3	1.87	0.55
1:A:320:ARG:HD2	12:A:640:HOH:O	2.06	0.55

Continued on next page...

Continued from previous page...

Atom-1	Atom-2	Interatomic distance (Å)	Clash overlap (Å)
2:B:5:VAL:HG23	2:B:132:LEU:CD1	2.37	0.55
2:B:202:TYR:CZ	2:B:238:VAL:HG11	2.42	0.55
2:B:295:MET:CG	2:B:377:PHE:HB2	2.37	0.55
1:C:140:SER:HA	1:C:171:ILE:HB	1.90	0.54
1:C:151:SER:HB2	1:C:193:THR:HG21	1.88	0.54
1:A:21:TRP:CZ3	1:A:63:PRO:HB3	2.42	0.54
1:C:18:ASN:OD1	12:C:603:HOH:O	2.17	0.54
1:C:36:MET:HB3	1:C:61:HIS:CE1	2.42	0.54
1:A:103:TYR:CD2	1:A:148:GLY:HA2	2.42	0.54
2:D:213:CYS:HA	2:D:217:LEU:HB2	1.87	0.54
1:A:141:PHE:CE1	1:A:170:SER:HB3	2.43	0.54
1:A:167:LEU:HG	1:A:200:CYS:HB3	1.90	0.54
1:A:265:ILE:HG23	1:A:432:TYR:CZ	2.42	0.54
2:B:23:VAL:HG21	2:B:232:SER:HB3	1.89	0.54
4:F:2:TYR:CE1	4:F:359:PHE:HB3	2.42	0.54
1:A:147:SER:HB2	1:A:190:THR:HB	1.89	0.54
4:F:371:PRO:HA	4:F:372:THR:C	2.26	0.54
1:A:284:GLU:CD	1:A:284:GLU:H	2.10	0.54
2:B:202:TYR:CE1	2:B:270:PRO:HB3	2.43	0.54
2:B:326:LYS:O	2:B:330:GLU:HG3	2.07	0.54
2:D:75:MET:HE3	2:D:92:PHE:HD2	1.73	0.54
1:A:118:VAL:HG21	1:A:149:PHE:HZ	1.72	0.53
2:D:174:SER:OG	2:D:207:GLU:OE1	2.18	0.53
2:B:5:VAL:HG23	2:B:132:LEU:HD11	1.89	0.53
2:D:21:TRP:CE3	2:D:63:PRO:HB3	2.43	0.53
1:C:23:LEU:O	1:C:27:GLU:HG3	2.08	0.53
2:D:75:MET:HE3	2:D:92:PHE:CD2	2.43	0.53
1:A:100:ALA:CB	2:B:253[B]:ARG:HG2	2.39	0.53
2:D:67:LEU:HD12	2:D:67:LEU:H	1.74	0.53
4:F:10:ASN:CB	4:F:44:ARG:HH22	2.17	0.53
1:C:117:LEU:HD11	1:C:121:ARG:NH2	2.24	0.53
2:D:5:VAL:HG23	2:D:132:LEU:CD1	2.39	0.53
2:D:325:MET:CE	2:D:355:VAL:HG21	2.38	0.53
1:A:134:GLY:HA3	1:A:165:SER:O	2.08	0.53
1:C:292:THR:HG22	1:C:335:ILE:CD1	2.39	0.53
2:B:244:PHE:CD1	2:B:358:ILE:HD12	2.44	0.52
1:C:66:VAL:HG23	1:C:125:LEU:CD1	2.39	0.52
2:D:169:PHE:CD2	2:D:235:MET:HG2	2.43	0.52
2:B:2:ARG:HB2	2:B:133:GLN:CG	2.39	0.52
2:D:141:LEU:HD12	2:D:172:MET:SD	2.49	0.52
2:B:238:VAL:HG13	2:B:376:THR:HG21	1.92	0.52

Continued on next page...

Continued from previous page...

Atom-1	Atom-2	Interatomic distance (Å)	Clash overlap (Å)
4:F:5:VAL:HG12	4:F:30:LEU:HB2	1.91	0.52
2:B:42:LEU:H	2:B:42:LEU:HD12	1.75	0.52
1:C:74:VAL:HB	12:C:641:HOH:O	2.09	0.52
2:B:194:LEU:HD22	2:B:198:THR:HG21	1.92	0.52
1:C:178:SER:HB2	1:C:183:GLU:OE2	2.09	0.52
2:B:124:LYS:HD3	2:B:124:LYS:C	2.30	0.52
2:B:251:ASP:O	2:B:255:LEU:HG	2.09	0.52
4:F:296:MET:SD	4:F:380:HIS:HB2	2.48	0.52
2:B:141:LEU:HD12	2:B:172:MET:SD	2.50	0.52
1:C:117:LEU:HD11	1:C:121:ARG:CZ	2.40	0.52
2:D:147:SER:O	2:D:151:THR:HG23	2.09	0.52
2:D:165:ILE:HG21	2:D:252:LEU:HB3	1.91	0.52
2:B:174:SER:CB	2:B:207:GLU:HB2	2.40	0.52
2:D:36:TYR:CD1	2:D:46:LEU:HD21	2.45	0.52
4:F:217:ARG:NH2	4:F:374:ILE:HA	2.24	0.51
1:A:101:ASN:ND2	1:A:180:ALA:HB2	2.25	0.51
1:A:289:ALA:HA	1:A:331:ALA:HB2	1.92	0.51
4:F:14:TYR:HB3	4:F:41:LEU:HD13	1.91	0.51
2:B:323:MET:HB3	2:B:373:MET:HE2	1.92	0.51
2:D:15:GLN:NE2	2:D:74:THR:HG23	2.24	0.51
2:B:103:TRP:CE3	2:B:189:LEU:HD13	2.45	0.51
1:C:234:ILE:HD12	1:C:234:ILE:H	1.76	0.51
1:C:108:TYR:O	1:C:112:LYS:HG2	2.10	0.51
2:D:210:TYR:CD1	2:D:222:PRO:HG2	2.45	0.51
1:A:118:VAL:HG21	1:A:149:PHE:CZ	2.46	0.51
1:A:289:ALA:HA	1:A:331:ALA:CB	2.41	0.51
2:B:16:ILE:HD13	2:B:231:VAL:HG11	1.93	0.51
2:D:320:ARG:O	2:D:373:MET:HA	2.09	0.51
2:B:286:LEU:HD12	2:B:290:GLU:OE1	2.10	0.51
1:A:2:ARG:HB3	1:A:131:GLY:O	2.11	0.50
1:A:233:GLN:HG3	1:A:368:LEU:HD12	1.93	0.50
2:B:359:PRO:HB2	2:B:371:LEU:O	2.12	0.50
4:F:17:VAL:O	4:F:21:LEU:HG	2.12	0.50
2:B:317:ALA:C	2:B:318:ILE:HD12	2.32	0.50
1:C:101:ASN:ND2	1:C:180:ALA:HB2	2.27	0.50
1:C:419:SER:O	1:C:423:GLU:HG3	2.11	0.50
1:C:103:TYR:CE2	1:C:148:GLY:HA2	2.46	0.49
2:D:21:TRP:CE3	2:D:24:ILE:HD11	2.47	0.49
2:B:325:MET:HE2	2:B:355:VAL:HG11	1.94	0.49
2:B:28:HIS:HB3	2:B:49:ILE:HD13	1.93	0.49
2:B:174:SER:OG	2:B:207:GLU:HB2	2.13	0.49

Continued on next page...

Continued from previous page...

Atom-1	Atom-2	Interatomic distance (Å)	Clash overlap (Å)
1:C:174:ALA:HB2	1:C:207:GLU:H	1.77	0.49
2:B:67:LEU:HD22	2:B:92:PHE:CE2	2.47	0.49
1:C:209:ILE:HG22	1:C:227:LEU:HD22	1.95	0.49
1:A:12:ALA:CB	1:A:140:SER:HB3	2.42	0.49
2:B:172:MET:HG3	2:B:387:LEU:HD11	1.94	0.49
1:C:292:THR:HG22	1:C:335:ILE:HD12	1.94	0.49
4:F:102:PRO:HG2	4:F:105:LEU:CD1	2.38	0.49
2:B:31:ASP:OD1	2:B:35:SER:N	2.43	0.49
2:D:334:ASN:ND2	2:D:338:LYS:HE3	2.24	0.49
4:F:246:GLN:O	4:F:250:SER:HB3	2.11	0.49
1:C:180:ALA:HA	2:D:258:ASN:OD1	2.12	0.49
2:B:269:MET:HG2	2:B:384:ILE:HD13	1.95	0.48
2:D:1:MET:HG3	2:D:50:ASN:HB2	1.95	0.48
2:D:212:ILE:O	2:D:216:THR:HB	2.12	0.48
1:A:14:VAL:HG13	1:A:67:PHE:HD2	1.77	0.48
1:A:233:GLN:HG3	1:A:368:LEU:CD1	2.44	0.48
1:A:336:LYS:HD2	1:A:341:ILE:HD12	1.95	0.48
2:B:259:MET:HG3	10:B:505:WVD:C9	2.42	0.48
1:C:63:PRO:HG2	1:C:87:PHE:CE1	2.47	0.48
1:C:71:GLU:HB3	1:C:98:ASP:HB3	1.95	0.48
4:F:287:ILE:HG23	4:F:319:PHE:CE2	2.49	0.48
1:A:76:ASP:OD1	1:A:79:ARG:NH1	2.45	0.48
1:C:286:LEU:HA	1:C:290:GLU:OE1	2.13	0.48
2:D:2:ARG:O	2:D:133:GLN:NE2	2.34	0.48
2:D:1:MET:HE2	2:D:50:ASN:HB2	1.94	0.48
2:D:106:GLY:O	2:D:111:GLY:HA3	2.14	0.48
2:D:115:VAL:HG23	2:D:153:LEU:CD2	2.43	0.48
1:A:75:ILE:HD12	1:A:94:THR:HG22	1.96	0.48
1:A:214:ARG:HG2	1:A:219:ILE:O	2.14	0.48
2:B:295:MET:HG3	2:B:377:PHE:HB2	1.95	0.48
1:A:68:VAL:HG11	1:A:149:PHE:CE2	2.49	0.48
1:C:71:GLU:OE1	1:C:73:THR:OG1	2.25	0.47
2:D:103:TRP:CE3	2:D:189:LEU:HD13	2.49	0.47
1:C:210:TYR:CE1	1:C:222:PRO:HD2	2.49	0.47
2:D:67:LEU:HD12	2:D:67:LEU:N	2.28	0.47
1:A:12:ALA:HB3	1:A:140:SER:HB3	1.96	0.47
1:A:99:ALA:O	1:A:105:ARG:HD3	2.14	0.47
2:B:21:TRP:CE3	2:B:63:PRO:HB3	2.49	0.47
1:C:274:PRO:HG2	1:C:371:VAL:HG11	1.96	0.47
2:B:349:ASN:HA	12:B:646:HOH:O	2.13	0.47
2:D:1:MET:HG3	2:D:50:ASN:CB	2.45	0.47

Continued on next page...

Continued from previous page...

Atom-1	Atom-2	Interatomic distance (Å)	Clash overlap (Å)
2:B:46:LEU:HA	2:B:49:ILE:HB	1.96	0.47
2:B:103:TRP:CD1	2:B:148:GLY:HA2	2.50	0.47
2:B:250:ALA:HB1	2:B:255:LEU:CD2	2.44	0.47
2:B:318:ILE:HD12	2:B:318:ILE:N	2.30	0.47
2:D:36:TYR:CD2	2:D:46:LEU:HD11	2.49	0.47
4:F:151:SER:HB3	4:F:180:HIS:CG	2.49	0.47
1:A:2:ARG:O	1:A:51:THR:HG22	2.15	0.47
2:B:19:LYS:O	2:B:23:VAL:HG23	2.15	0.47
2:B:69:ASP:HA	2:B:145:THR:HG21	1.97	0.47
2:D:249:ASN:ND2	12:D:607:HOH:O	2.45	0.47
2:D:387:LEU:HD23	2:D:387:LEU:C	2.35	0.47
4:F:24:THR:O	4:F:26:GLN:HG3	2.15	0.47
1:A:325:PRO:HB3	3:E:20:PHE:CE1	2.50	0.47
2:B:255:LEU:HD22	10:B:505:WVD:C2	2.45	0.47
2:B:324:SER:O	2:B:328:VAL:HG23	2.15	0.47
1:C:345:ASP:OD1	1:C:346:TRP:N	2.48	0.47
1:A:79:ARG:HG2	1:A:92:LEU:HD12	1.96	0.46
1:A:274:PRO:HB3	1:A:286:LEU:HD12	1.98	0.46
1:C:174:ALA:CB	1:C:207:GLU:HB2	2.45	0.46
2:D:345:GLU:HG3	2:D:440:ALA:HB2	1.96	0.46
4:F:201:ILE:HG12	4:F:221:LEU:HG	1.96	0.46
1:A:180:ALA:O	1:A:183:GLU:HG3	2.15	0.46
1:A:185:TYR:O	1:A:189:LEU:HG	2.15	0.46
1:C:25:CYS:HB3	1:C:30:ILE:O	2.16	0.46
2:B:7:ILE:O	2:B:137:LEU:HA	2.15	0.46
2:B:237:GLY:HA3	2:B:376:THR:OG1	2.16	0.46
2:D:124:LYS:C	2:D:124:LYS:HD3	2.36	0.46
2:D:382:THR:O	2:D:385:GLN:HG2	2.16	0.46
4:F:199:PHE:HA	4:F:241:THR:HG21	1.98	0.46
4:F:282:SER:HB2	4:F:325:LEU:HD13	1.95	0.46
2:B:199:ASP:OD1	9:B:504:MES:H62	2.16	0.46
2:D:412:GLY:C	3:E:133:VAL:HG13	2.36	0.46
1:C:150:THR:O	1:C:154:MET:HG2	2.16	0.46
1:C:318:LEU:HD12	1:C:318:LEU:N	2.31	0.46
1:A:196:GLU:OE1	1:A:196:GLU:HA	2.15	0.46
1:A:409:VAL:HA	1:A:413:MET:O	2.16	0.46
1:C:88:HIS:HE1	1:C:90:GLU:HG3	1.81	0.46
1:A:74:VAL:HB	12:A:611:HOH:O	2.16	0.46
2:B:402:LYS:HD3	2:B:415:GLU:OE2	2.16	0.46
1:C:344:VAL:HG21	1:C:346:TRP:CE2	2.51	0.46
2:B:158:ARG:NH1	2:B:196:GLU:O	2.49	0.45

Continued on next page...

Continued from previous page...

Atom-1	Atom-2	Interatomic distance (Å)	Clash overlap (Å)
1:A:119:LEU:HD11	1:A:156:ARG:HB3	1.98	0.45
2:B:165:ILE:HG21	2:B:252:LEU:HB3	1.98	0.45
2:B:415:GLU:HG3	12:B:629:HOH:O	2.16	0.45
4:F:217:ARG:HG3	4:F:218:GLU:HG2	1.97	0.45
1:A:357:TYR:CZ	3:E:17:GLY:HA2	2.51	0.45
1:A:188:ILE:HD12	1:A:395:PHE:CD2	2.52	0.45
1:A:331:ALA:O	1:A:335:ILE:HG13	2.17	0.45
2:B:143:GLY:HA3	8:B:501:GDP:O3A	2.17	0.45
10:B:505:WVD:C9	10:B:505:WVD:C2	2.94	0.45
1:C:155:GLU:OE1	3:E:101:LEU:HD13	2.17	0.45
4:F:39:LEU:HD12	4:F:61:LEU:O	2.17	0.45
4:F:17:VAL:HG13	4:F:351:VAL:HG22	1.98	0.45
1:A:98:ASP:HB2	5:A:501:GTP:O2G	2.17	0.45
1:A:99:ALA:C	1:A:105:ARG:HD3	2.37	0.45
3:E:9:ILE:HG12	3:E:21:GLU:O	2.17	0.45
1:A:10:GLY:O	1:A:14:VAL:HG23	2.17	0.45
1:A:87:PHE:HA	1:A:91:GLN:OE1	2.16	0.45
1:A:234:ILE:O	1:A:238:ILE:HG13	2.16	0.45
2:D:105:LYS:HA	2:D:109:THR:HB	1.99	0.45
3:E:129:HIS:O	3:E:133:VAL:HG23	2.17	0.45
1:A:345:ASP:HB3	3:E:28:SER:HB2	1.98	0.45
2:B:231:VAL:O	2:B:235:MET:HG3	2.17	0.45
1:C:196:GLU:HG2	12:C:671:HOH:O	2.16	0.45
4:F:198:LYS:HG2	4:F:199:PHE:H	1.81	0.45
2:B:205:ASP:OD1	2:B:207:GLU:N	2.45	0.44
4:F:209:HIS:CE1	4:F:358:VAL:HG22	2.52	0.44
1:A:250:VAL:HG12	1:A:254:GLU:OE1	2.18	0.44
2:D:244:PHE:CE1	2:D:358:ILE:HD12	2.52	0.44
1:A:188:ILE:HD12	1:A:395:PHE:HB2	1.99	0.44
3:E:83:ILE:O	3:E:87:ILE:HG13	2.17	0.44
4:F:160:ILE:HD12	4:F:160:ILE:N	2.32	0.44
4:F:284:LEU:HD12	4:F:284:LEU:HA	1.82	0.44
1:A:5:ILE:HB	1:A:135:PHE:CD2	2.53	0.44
1:A:150:THR:O	1:A:154:MET:HG2	2.18	0.44
1:A:187:SER:HB3	1:A:391:LEU:HD21	1.99	0.44
1:A:213:CYS:O	1:A:217:LEU:HB2	2.18	0.44
1:C:335:ILE:HG23	1:C:339:ARG:HD2	1.99	0.44
2:D:112:ALA:O	2:D:115:VAL:HG12	2.18	0.44
4:F:2:TYR:CD1	4:F:359:PHE:HB3	2.53	0.44
1:A:320:ARG:HG3	12:A:647:HOH:O	2.17	0.44
1:A:385:ALA:HB2	1:A:432:TYR:CG	2.52	0.44

Continued on next page...

Continued from previous page...

Atom-1	Atom-2	Interatomic distance (Å)	Clash overlap (Å)
1:C:103:TYR:CD2	1:C:148:GLY:HA2	2.52	0.44
1:A:227:LEU:O	1:A:231:ILE:HG13	2.18	0.43
1:A:255:PHE:O	1:A:259:LEU:HB2	2.18	0.43
2:B:323:MET:HB3	2:B:373:MET:CE	2.48	0.43
1:C:184:PRO:O	1:C:188:ILE:HD13	2.19	0.43
1:C:234:ILE:HD12	1:C:234:ILE:N	2.33	0.43
4:F:147:TRP:HB2	4:F:169:LEU:CD1	2.47	0.43
1:C:266:HIS:O	1:C:268:PRO:HD3	2.18	0.43
1:A:209:ILE:HD11	1:A:302:MET:SD	2.59	0.43
1:A:298:PRO:HA	1:A:301:GLN:CD	2.39	0.43
2:B:42:LEU:CB	2:B:358:ILE:HD11	2.48	0.43
1:C:96:LYS:NZ	2:D:130:ASP:OD1	2.49	0.43
1:C:409:VAL:HA	1:C:413:MET:O	2.18	0.43
1:A:11:GLN:NE2	12:A:609:HOH:O	2.50	0.43
2:B:203:CYS:SG	2:B:267:PHE:HB3	2.58	0.43
2:B:246:GLY:C	2:B:248:LEU:H	2.21	0.43
4:F:17:VAL:HG13	4:F:351:VAL:CG2	2.48	0.43
4:F:348:GLN:NE2	4:F:352:ASP:OD1	2.51	0.43
1:A:405:VAL:HG11	1:A:415:GLU:HG3	2.01	0.43
2:B:7:ILE:O	2:B:137:LEU:HD12	2.19	0.43
2:B:75:MET:HE3	2:B:92:PHE:CD2	2.54	0.43
2:D:6:HIS:HE1	2:D:138:THR:HG23	1.84	0.43
4:F:19:ARG:HD2	4:F:19:ARG:C	2.38	0.43
4:F:126:ASP:OD2	4:F:128:ARG:HG3	2.18	0.43
1:A:21:TRP:CE3	1:A:63:PRO:HB3	2.54	0.43
2:B:250:ALA:HB1	2:B:255:LEU:HD21	1.99	0.43
1:C:88:HIS:CE1	1:C:90:GLU:HG3	2.54	0.43
2:D:146:GLY:O	2:D:150:GLY:HA3	2.18	0.43
4:F:216:TYR:CE2	4:F:218:GLU:HB2	2.53	0.43
1:C:241:SER:HA	1:C:249:ASN:OD1	2.19	0.43
1:C:319:TYR:HB2	1:C:355:ILE:HG12	2.00	0.43
2:D:12:CYS:HB2	8:D:502:GDP:C8	2.54	0.43
2:B:159:GLU:HB2	3:E:72:LEU:HD13	2.01	0.43
4:F:96:GLU:OE2	4:F:98:TYR:OH	2.23	0.43
4:F:205:VAL:CG2	4:F:291:ILE:HD13	2.49	0.43
1:A:3:GLU:HG2	1:A:64:ARG:CZ	2.49	0.42
2:B:371:LEU:HD23	2:B:371:LEU:HA	1.77	0.42
1:C:186:ASN:O	1:C:190:THR:HG22	2.18	0.42
4:F:19:ARG:HD2	4:F:19:ARG:O	2.18	0.42
2:B:8:GLN:OE1	2:B:17:GLY:HA3	2.18	0.42
2:B:42:LEU:HD12	2:B:42:LEU:N	2.34	0.42

Continued on next page...

Continued from previous page...

Atom-1	Atom-2	Interatomic distance (Å)	Clash overlap (Å)
1:C:430:LYS:HE2	1:C:434:GLU:OE2	2.19	0.42
3:E:60:ARG:O	3:E:64:GLN:HG3	2.19	0.42
1:A:69:ASP:O	1:A:94:THR:HA	2.19	0.42
1:A:180:ALA:HB3	1:A:183:GLU:CG	2.50	0.42
1:A:286:LEU:O	1:A:373:ARG:NH1	2.52	0.42
2:D:20:PHE:CD1	2:D:235:MET:HE2	2.55	0.42
3:E:44:ASP:HB3	3:E:45:PRO:HD2	2.02	0.42
4:F:162:ILE:HD11	4:F:240:LEU:HD11	2.00	0.42
4:F:223:THR:O	4:F:260:ASN:HB3	2.19	0.42
2:B:40:SER:OG	2:B:42:LEU:HD13	2.19	0.42
1:A:437:VAL:HG12	1:A:438:ASP:N	2.35	0.42
2:D:303:ALA:O	2:D:305:CYS:N	2.49	0.42
4:F:2:TYR:HB2	4:F:27:TRP:CD2	2.55	0.42
1:C:312:TYR:CE2	1:C:341:ILE:HG23	2.55	0.42
2:D:22:GLU:HG2	2:D:83:PHE:CD1	2.55	0.42
2:B:42:LEU:HB2	2:B:358:ILE:HD11	2.02	0.42
2:D:5:VAL:HB	2:D:135:PHE:CD2	2.55	0.42
2:D:16:ILE:HD11	2:D:138:THR:HB	2.01	0.42
2:D:173:PRO:HG3	2:D:187:ALA:HB2	2.01	0.42
2:D:385:GLN:HB2	2:D:429:VAL:HG13	2.00	0.42
1:A:75:ILE:HB	1:A:94:THR:CG2	2.49	0.42
1:C:66:VAL:HG23	1:C:125:LEU:HD11	2.01	0.42
1:C:328:VAL:O	1:C:332:ILE:HG13	2.20	0.42
2:D:9:ALA:HA	2:D:68:VAL:O	2.20	0.42
2:D:115:VAL:HG21	2:D:156:LYS:HG3	2.01	0.42
2:D:204:ILE:HG21	2:D:231:VAL:HG22	2.02	0.42
4:F:55:GLU:OE1	4:F:55:GLU:HA	2.18	0.42
1:C:297:GLU:HB3	1:C:300:ASN:HD22	1.85	0.41
2:D:109:THR:HG22	2:D:110:GLU:N	2.35	0.41
2:D:346:TRP:CE3	2:D:347:ILE:HG13	2.55	0.41
4:F:199:PHE:CD2	4:F:221:LEU:HD23	2.55	0.41
1:A:317:LEU:HB3	1:A:319:TYR:CE1	2.55	0.41
1:A:248:LEU:O	12:A:601:HOH:O	2.21	0.41
1:A:260:VAL:HG11	1:A:266:HIS:HB3	2.02	0.41
2:B:308:ARG:HA	2:B:342:TYR:CE1	2.56	0.41
2:B:387:LEU:C	2:B:387:LEU:HD23	2.40	0.41
1:C:344:VAL:HG23	1:C:347:CYS:HB3	2.01	0.41
2:B:204:ILE:CG2	2:B:209:LEU:HD11	2.50	0.41
1:C:194:THR:O	1:C:194:THR:HG22	2.20	0.41
4:F:101:TYR:CD2	4:F:179:VAL:HG22	2.56	0.41
2:B:402:LYS:HB3	2:B:405:LEU:HD12	2.02	0.41

Continued on next page...

Continued from previous page...

Atom-1	Atom-2	Interatomic distance (Å)	Clash overlap (Å)
1:C:21:TRP:CZ2	1:C:65:ALA:HB2	2.56	0.41
1:C:254:GLU:HA	12:C:645:HOH:O	2.20	0.41
2:D:123:ARG:O	2:D:127:GLU:HG3	2.20	0.41
2:D:169:PHE:CE2	2:D:235:MET:HG2	2.56	0.41
4:F:128:ARG:HH12	4:F:170:LEU:HB3	1.84	0.41
2:D:46:LEU:HA	2:D:49:ILE:HB	2.02	0.41
2:D:11:GLN:HB3	8:D:502:GDP:O2A	2.20	0.41
4:F:246:GLN:HB3	4:F:260:ASN:ND2	2.36	0.41
1:A:105:ARG:NH1	1:A:411:GLU:OE2	2.52	0.41
2:B:2:ARG:HB2	2:B:133:GLN:NE2	2.36	0.41
4:F:173:ILE:HD13	4:F:180:HIS:HB2	2.02	0.41
4:F:199:PHE:CA	4:F:241:THR:HG21	2.51	0.41
2:B:19:LYS:HB3	2:B:232:SER:OG	2.21	0.41
2:B:67:LEU:N	2:B:67:LEU:HD12	2.36	0.41
1:C:97:GLU:HG3	2:D:2:ARG:NH2	2.36	0.41
1:C:151:SER:HB2	1:C:193:THR:HG22	2.00	0.41
1:C:174:ALA:O	1:C:178:SER:HB3	2.20	0.41
2:D:109:THR:O	2:D:113:GLU:HG2	2.21	0.41
2:B:325:MET:CE	2:B:355:VAL:HG11	2.50	0.41
1:C:208:ALA:O	1:C:212:ILE:HG13	2.21	0.40
1:A:383:ALA:O	1:A:386:GLU:HG3	2.22	0.40
4:F:151:SER:HB3	4:F:180:HIS:CD2	2.55	0.40
4:F:205:VAL:HG21	4:F:291:ILE:HD13	2.03	0.40
1:A:254:GLU:HG2	1:A:258:ASN:ND2	2.36	0.40
2:B:107:HIS:O	2:B:152:LEU:HD22	2.22	0.40
2:B:295:MET:SD	2:B:375:ALA:HB1	2.62	0.40
1:C:23:LEU:O	1:C:23:LEU:HD12	2.22	0.40
2:D:5:VAL:HG23	2:D:132:LEU:HD11	2.04	0.40
1:A:411:GLU:HA	1:A:411:GLU:OE1	2.21	0.40
2:B:32:PRO:HA	2:B:83:PHE:CD2	2.57	0.40
1:C:55:GLU:HA	1:C:60:LYS:O	2.22	0.40
4:F:220:VAL:HG11	4:F:339:ALA:HB2	2.03	0.40
1:C:210:TYR:CZ	1:C:222:PRO:HD2	2.56	0.40
1:C:291:ILE:HG13	1:C:292:THR:N	2.37	0.40
2:D:67:LEU:HD22	2:D:92:PHE:CE2	2.57	0.40
2:D:183:GLU:N	2:D:184:PRO:CD	2.85	0.40
2:D:271:GLY:CA	2:D:377:PHE:HB3	2.52	0.40

There are no symmetry-related clashes.

5.3 Torsion angles [i](#)

5.3.1 Protein backbone [i](#)

In the following table, the Percentiles column shows the percent Ramachandran outliers of the chain as a percentile score with respect to all X-ray entries followed by that with respect to entries of similar resolution.

The Analysed column shows the number of residues for which the backbone conformation was analysed, and the total number of residues.

Mol	Chain	Analysed	Favoured	Allowed	Outliers	Percentiles	
1	A	436/451 (97%)	419 (96%)	17 (4%)	0	100	100
1	C	439/451 (97%)	428 (98%)	11 (2%)	0	100	100
2	B	422/445 (95%)	402 (95%)	20 (5%)	0	100	100
2	D	429/445 (96%)	411 (96%)	17 (4%)	1 (0%)	47	71
3	E	119/143 (83%)	116 (98%)	3 (2%)	0	100	100
4	F	344/384 (90%)	327 (95%)	17 (5%)	0	100	100
All	All	2189/2319 (94%)	2103 (96%)	85 (4%)	1 (0%)	100	100

All (1) Ramachandran outliers are listed below:

Mol	Chain	Res	Type
2	D	285	ALA

5.3.2 Protein sidechains [i](#)

In the following table, the Percentiles column shows the percent sidechain outliers of the chain as a percentile score with respect to all X-ray entries followed by that with respect to entries of similar resolution.

The Analysed column shows the number of residues for which the sidechain conformation was analysed, and the total number of residues.

Mol	Chain	Analysed	Rotameric	Outliers	Percentiles	
1	A	369/379 (97%)	364 (99%)	5 (1%)	67	85
1	C	372/379 (98%)	368 (99%)	4 (1%)	73	88
2	B	368/383 (96%)	364 (99%)	4 (1%)	73	88
2	D	368/383 (96%)	363 (99%)	5 (1%)	67	85
3	E	110/127 (87%)	110 (100%)	0	100	100
4	F	315/342 (92%)	315 (100%)	0	100	100

Continued on next page...

Continued from previous page...

Mol	Chain	Analysed	Rotameric	Outliers	Percentiles
All	All	1902/1993 (95%)	1884 (99%)	18 (1%)	78 91

All (18) residues with a non-rotameric sidechain are listed below:

Mol	Chain	Res	Type
1	A	71	GLU
1	A	221	ARG
1	A	282	TYR
1	A	284	GLU
1	A	381	THR
2	B	26	ASP
2	B	48	ARG
2	B	139	HIS
2	B	202	TYR
1	C	71	GLU
1	C	221	ARG
1	C	347	CYS
1	C	381	THR
2	D	39	ASP
2	D	139	HIS
2	D	229	HIS
2	D	247	GLN
2	D	325	MET

Sometimes sidechains can be flipped to improve hydrogen bonding and reduce clashes. All (15) such sidechains are listed below:

Mol	Chain	Res	Type
1	A	88	HIS
1	A	300	ASN
2	B	15	GLN
2	B	167	ASN
2	B	282	GLN
2	B	424	ASN
1	C	11	GLN
1	C	15	GLN
1	C	256	GLN
2	D	6	HIS
2	D	167	ASN
2	D	294	GLN
3	E	108	ASN
4	F	180	HIS

Continued on next page...

Continued from previous page...

Mol	Chain	Res	Type
4	F	229	ASN

5.3.3 RNA [i](#)

There are no RNA molecules in this entry.

5.4 Non-standard residues in protein, DNA, RNA chains [i](#)

There are no non-standard protein/DNA/RNA residues in this entry.

5.5 Carbohydrates [i](#)

There are no monosaccharides in this entry.

5.6 Ligand geometry [i](#)

Of 16 ligands modelled in this entry, 9 are monoatomic - leaving 7 for Mogul analysis.

In the following table, the Counts columns list the number of bonds (or angles) for which Mogul statistics could be retrieved, the number of bonds (or angles) that are observed in the model and the number of bonds (or angles) that are defined in the Chemical Component Dictionary. The Link column lists molecule types, if any, to which the group is linked. The Z score for a bond length (or angle) is the number of standard deviations the observed value is removed from the expected value. A bond length (or angle) with $|Z| > 2$ is considered an outlier worth inspection. RMSZ is the root-mean-square of all Z scores of the bond lengths (or angles).

Mol	Type	Chain	Res	Link	Bond lengths			Bond angles		
					Counts	RMSZ	# Z > 2	Counts	RMSZ	# Z > 2
5	GTP	A	501	6	26,34,34	1.14	2 (7%)	32,54,54	1.41	6 (18%)
5	GTP	C	501	6	26,34,34	1.11	2 (7%)	32,54,54	1.43	5 (15%)
11	ACP	F	401	6	27,33,33	1.41	5 (18%)	32,52,52	1.49	4 (12%)
8	GDP	D	502	-	24,30,30	0.93	1 (4%)	30,47,47	1.25	4 (13%)
8	GDP	B	501	6	24,30,30	0.91	1 (4%)	30,47,47	1.20	4 (13%)
10	WVD	B	505	-	10,16,16	1.32	2 (20%)	10,22,22	3.03	4 (40%)
9	MES	B	504	-	12,12,12	2.21	1 (8%)	14,16,16	2.09	5 (35%)

In the following table, the Chirals column lists the number of chiral outliers, the number of chiral centers analysed, the number of these observed in the model and the number defined in the Chemical Component Dictionary. Similar counts are reported in the Torsion and Rings columns.

'-' means no outliers of that kind were identified.

Mol	Type	Chain	Res	Link	Chirals	Torsions	Rings
5	GTP	A	501	6	-	8/18/38/38	0/3/3/3
5	GTP	C	501	6	-	8/18/38/38	0/3/3/3
11	ACP	F	401	6	-	12/15/38/38	0/3/3/3
8	GDP	D	502	-	-	2/12/32/32	0/3/3/3
8	GDP	B	501	6	-	3/12/32/32	0/3/3/3
10	WVD	B	505	-	-	0/4/18/18	0/2/2/2
9	MES	B	504	-	-	4/6/14/14	0/1/1/1

All (14) bond length outliers are listed below:

Mol	Chain	Res	Type	Atoms	Z	Observed(Å)	Ideal(Å)
9	B	504	MES	C8-S	-7.36	1.67	1.77
5	A	501	GTP	C5-C6	-3.93	1.39	1.47
5	C	501	GTP	C5-C6	-3.86	1.39	1.47
11	F	401	ACP	PB-O3A	2.94	1.61	1.58
11	F	401	ACP	PG-O3G	2.93	1.61	1.54
11	F	401	ACP	PG-O2G	2.90	1.61	1.54
11	F	401	ACP	C5-C4	2.52	1.47	1.40
10	B	505	WVD	C5-N1	2.50	1.40	1.34
10	B	505	WVD	C1-N2	2.43	1.38	1.33
11	F	401	ACP	PB-O2B	2.31	1.61	1.56
8	B	501	GDP	C6-N1	-2.23	1.34	1.37
8	D	502	GDP	C6-N1	-2.19	1.34	1.37
5	C	501	GTP	C2-N3	2.19	1.38	1.33
5	A	501	GTP	C2-N3	2.03	1.38	1.33

All (32) bond angle outliers are listed below:

Mol	Chain	Res	Type	Atoms	Z	Observed(°)	Ideal(°)
10	B	505	WVD	C6-C5-N1	7.75	127.54	117.93
11	F	401	ACP	PB-O3A-PA	-4.04	119.73	132.56
8	D	502	GDP	PA-O3A-PB	-3.74	119.99	132.83
9	B	504	MES	C5-N4-C3	3.71	117.18	108.83
9	B	504	MES	O1S-S-C8	3.69	111.36	106.92
10	B	505	WVD	O1-C5-N1	-3.57	116.44	122.34
8	B	501	GDP	PA-O3A-PB	-3.57	120.59	132.83
11	F	401	ACP	C3'-C2'-C1'	3.50	106.25	100.98
9	B	504	MES	C6-C5-N4	-3.20	105.25	110.10
5	A	501	GTP	C5-C6-N1	3.17	119.56	113.95
11	F	401	ACP	N3-C2-N1	-3.15	123.76	128.68

Continued on next page...

Continued from previous page...

Mol	Chain	Res	Type	Atoms	Z	Observed(°)	Ideal(°)
5	A	501	GTP	PA-O3A-PB	-3.14	122.04	132.83
5	C	501	GTP	PB-O3B-PG	-3.14	122.06	132.83
5	C	501	GTP	C8-N7-C5	3.13	108.94	102.99
5	A	501	GTP	C8-N7-C5	3.08	108.85	102.99
5	C	501	GTP	PA-O3A-PB	-3.02	122.47	132.83
5	C	501	GTP	C5-C6-N1	3.01	119.27	113.95
5	A	501	GTP	C2-N1-C6	-2.79	119.97	125.10
5	C	501	GTP	C2-N1-C6	-2.67	120.18	125.10
11	F	401	ACP	C4-C5-N7	-2.59	106.70	109.40
5	A	501	GTP	PB-O3B-PG	-2.52	124.17	132.83
10	B	505	WVD	C4-N2-C1	-2.50	122.24	126.08
8	B	501	GDP	C8-N7-C5	2.43	107.61	102.99
8	B	501	GDP	C5-C6-N1	2.41	118.21	113.95
9	B	504	MES	C7-N4-C5	2.38	117.32	111.23
8	D	502	GDP	C8-N7-C5	2.36	107.49	102.99
9	B	504	MES	O3S-S-C8	2.26	109.43	105.77
8	D	502	GDP	C3'-C2'-C1'	2.24	104.36	100.98
8	D	502	GDP	C5-C6-N1	2.20	117.84	113.95
5	A	501	GTP	O6-C6-C5	-2.03	120.41	124.37
10	B	505	WVD	C3-N1-C5	-2.02	116.39	122.78
8	B	501	GDP	O6-C6-C5	-2.01	120.44	124.37

There are no chirality outliers.

All (37) torsion outliers are listed below:

Mol	Chain	Res	Type	Atoms
5	A	501	GTP	C5'-O5'-PA-O1A
5	C	501	GTP	C5'-O5'-PA-O1A
8	B	501	GDP	C5'-O5'-PA-O1A
8	B	501	GDP	C5'-O5'-PA-O2A
9	B	504	MES	C8-C7-N4-C5
11	F	401	ACP	PB-C3B-PG-O1G
11	F	401	ACP	PB-C3B-PG-O2G
11	F	401	ACP	PB-C3B-PG-O3G
11	F	401	ACP	PG-C3B-PB-O1B
11	F	401	ACP	PG-C3B-PB-O2B
11	F	401	ACP	PG-C3B-PB-O3A
11	F	401	ACP	C5'-O5'-PA-O1A
11	F	401	ACP	C5'-O5'-PA-O2A
11	F	401	ACP	C3'-C4'-C5'-O5'
11	F	401	ACP	O4'-C4'-C5'-O5'
9	B	504	MES	C7-C8-S-O3S

Continued on next page...

Continued from previous page...

Mol	Chain	Res	Type	Atoms
5	C	501	GTP	PB-O3B-PG-O1G
5	A	501	GTP	C5'-O5'-PA-O2A
5	C	501	GTP	C5'-O5'-PA-O2A
9	B	504	MES	C7-C8-S-O1S
9	B	504	MES	C7-C8-S-O2S
5	A	501	GTP	PB-O3A-PA-O2A
5	A	501	GTP	PB-O3B-PG-O1G
5	A	501	GTP	PB-O3B-PG-O2G
5	A	501	GTP	PB-O3B-PG-O3G
5	C	501	GTP	PB-O3B-PG-O2G
5	C	501	GTP	PB-O3B-PG-O3G
11	F	401	ACP	PB-O3A-PA-O2A
5	A	501	GTP	C5'-O5'-PA-O3A
5	C	501	GTP	C5'-O5'-PA-O3A
8	B	501	GDP	C5'-O5'-PA-O3A
8	D	502	GDP	C5'-O5'-PA-O3A
11	F	401	ACP	C5'-O5'-PA-O3A
5	A	501	GTP	PB-O3A-PA-O1A
5	C	501	GTP	PB-O3A-PA-O2A
8	D	502	GDP	C5'-O5'-PA-O2A
5	C	501	GTP	C4'-C5'-O5'-PA

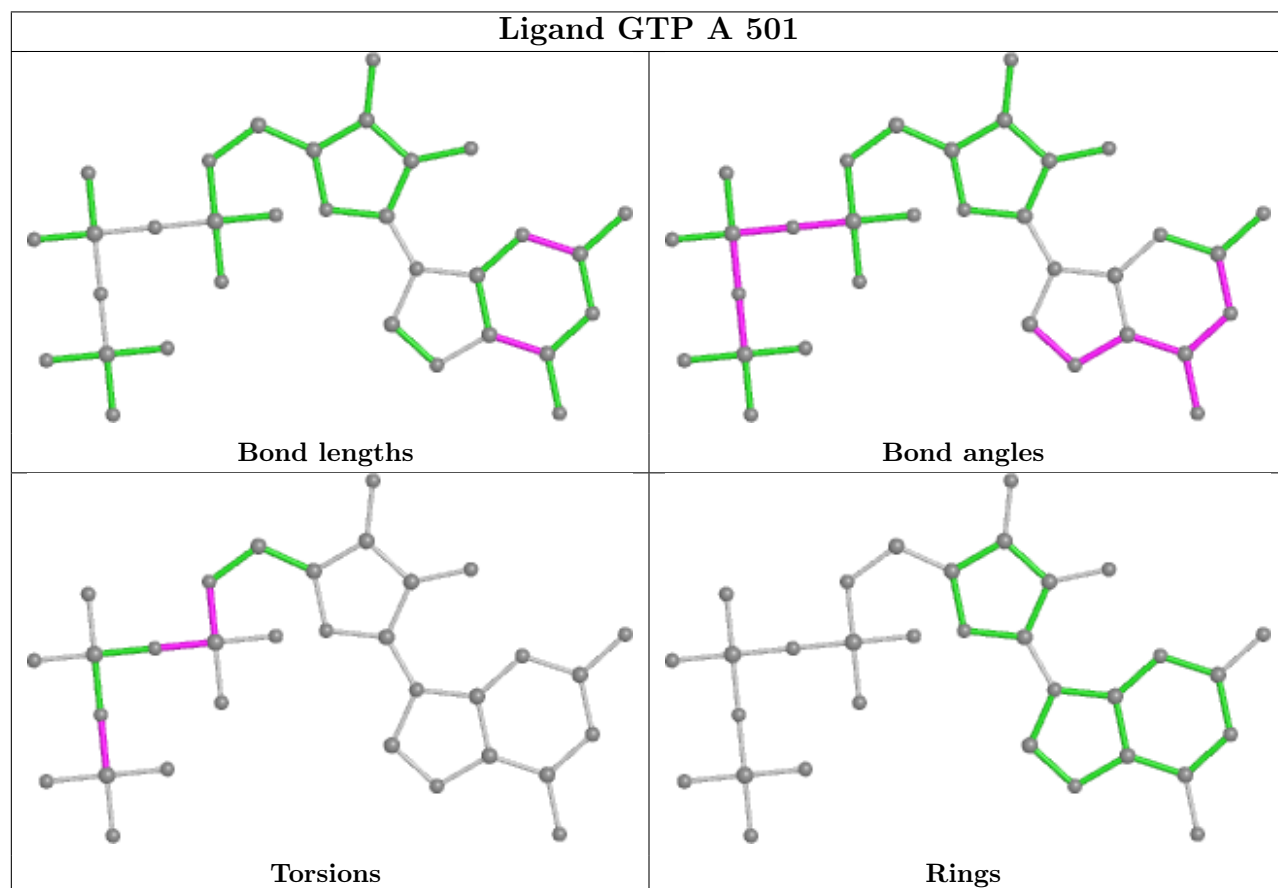
There are no ring outliers.

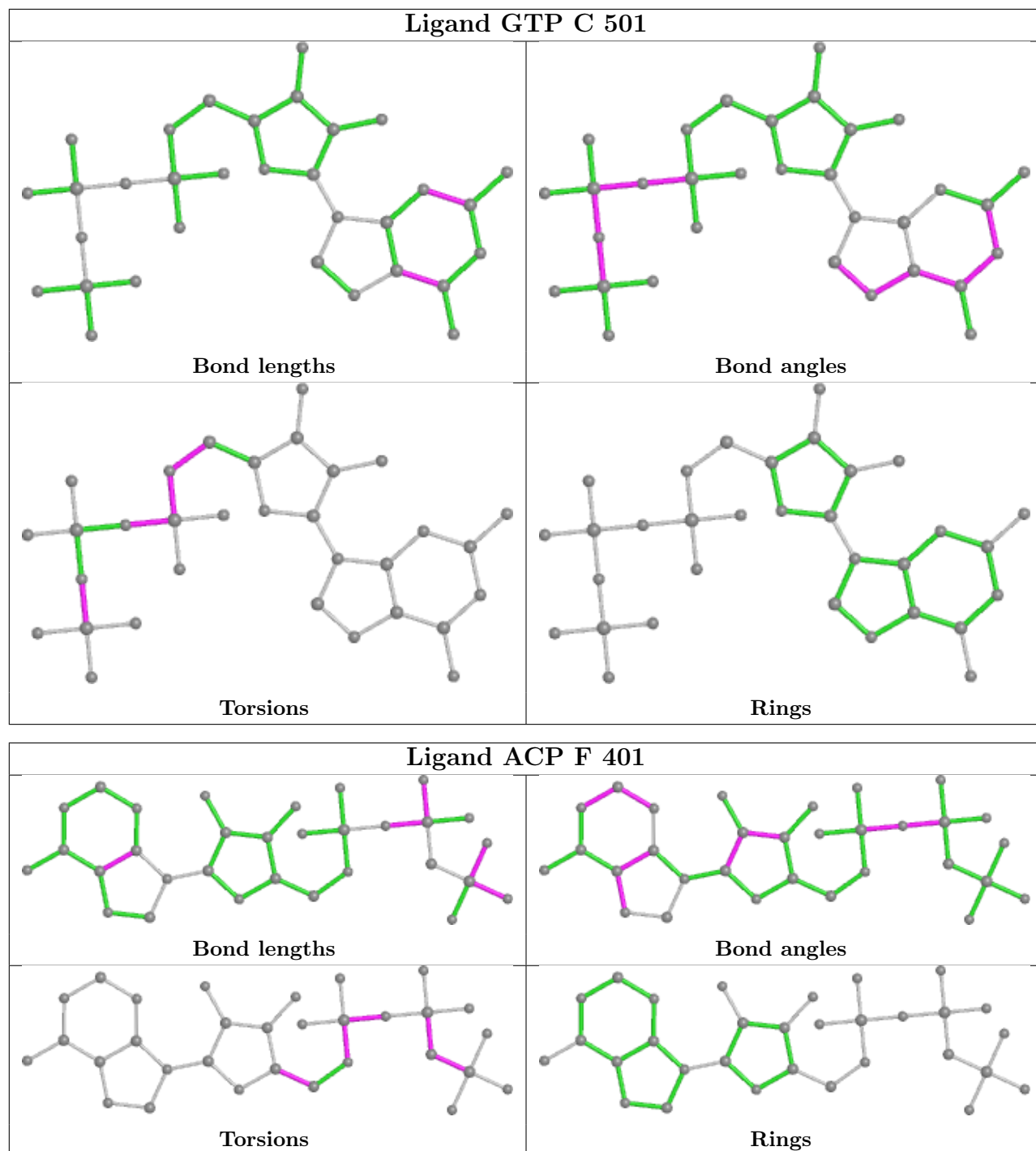
7 monomers are involved in 13 short contacts:

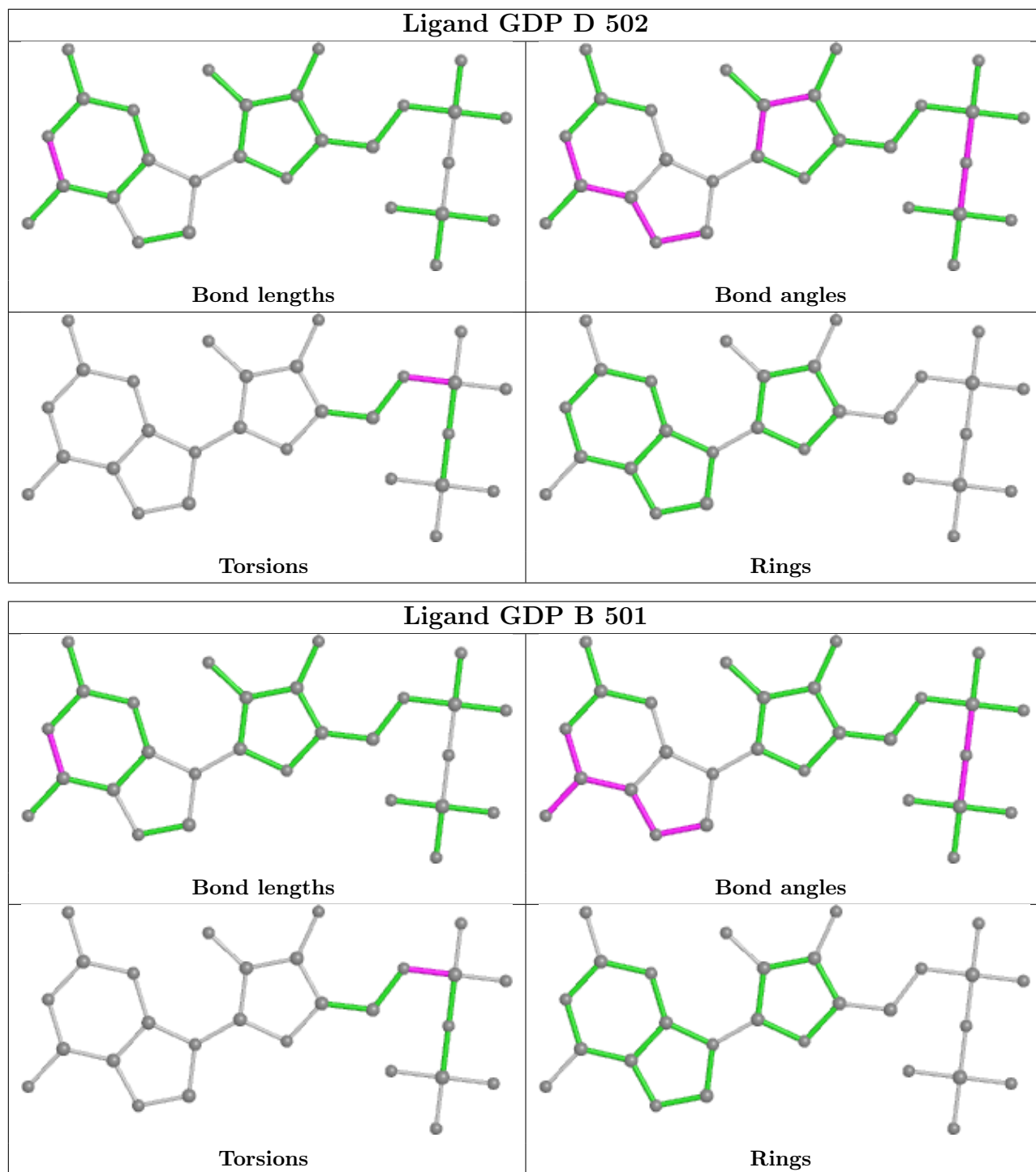
Mol	Chain	Res	Type	Clashes	Symm-Clashes
5	A	501	GTP	1	0
5	C	501	GTP	1	0
11	F	401	ACP	2	0
8	D	502	GDP	3	0
8	B	501	GDP	2	0
10	B	505	WVD	3	0
9	B	504	MES	1	0

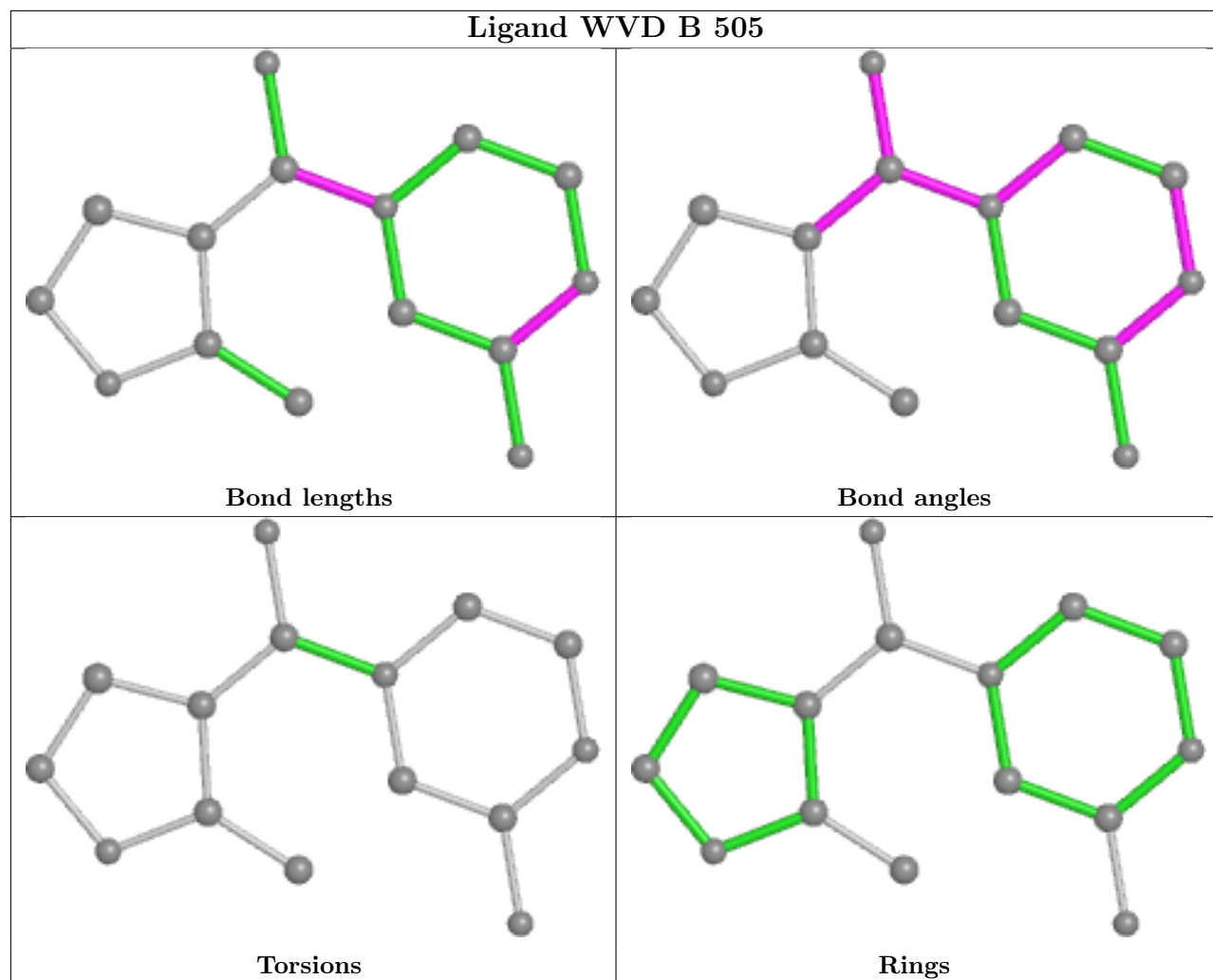
The following is a two-dimensional graphical depiction of Mogul quality analysis of bond lengths, bond angles, torsion angles, and ring geometry for all instances of the Ligand of Interest. In addition, ligands with molecular weight > 250 and outliers as shown on the validation Tables will also be included. For torsion angles, if less than 5% of the Mogul distribution of torsion angles is within 10 degrees of the torsion angle in question, then that torsion angle is considered an outlier. Any bond that is central to one or more torsion angles identified as an outlier by Mogul will be highlighted in the graph. For rings, the root-mean-square deviation (RMSD) between the ring in question and similar rings identified by Mogul is calculated over all ring torsion angles. If the

average RMSD is greater than 60 degrees and the minimal RMSD between the ring in question and any Mogul-identified rings is also greater than 60 degrees, then that ring is considered an outlier. The outliers are highlighted in purple. The color gray indicates Mogul did not find sufficient equivalents in the CSD to analyse the geometry.









5.7 Other polymers [i](#)

There are no such residues in this entry.

5.8 Polymer linkage issues [i](#)

There are no chain breaks in this entry.

6 Fit of model and data

6.1 Protein, DNA and RNA chains

In the following table, the column labelled ‘#RSRZ> 2’ contains the number (and percentage) of RSRZ outliers, followed by percent RSRZ outliers for the chain as percentile scores relative to all X-ray entries and entries of similar resolution. The OWAB column contains the minimum, median, 95th percentile and maximum values of the occupancy-weighted average B-factor per residue. The column labelled ‘Q< 0.9’ lists the number of (and percentage) of residues with an average occupancy less than 0.9.

Mol	Chain	Analysed	<RSRZ>	#RSRZ>2	OWAB(Å ²)	Q<0.9
1	A	438/451 (97%)	0.49	19 (4%) 35 28	40, 56, 81, 113	0
1	C	440/451 (97%)	0.49	5 (1%) 80 78	33, 45, 65, 85	0
2	B	425/445 (95%)	0.60	15 (3%) 44 36	33, 53, 88, 110	2 (0%)
2	D	431/445 (96%)	0.76	42 (9%) 7 5	43, 66, 94, 142	5 (1%)
3	E	123/143 (86%)	0.74	9 (7%) 15 11	40, 66, 98, 117	0
4	F	352/384 (91%)	1.51	104 (29%) 0 0	49, 83, 130, 148	0
All	All	2209/2319 (95%)	0.74	194 (8%) 10 7	33, 59, 107, 148	7 (0%)

All (194) RSRZ outliers are listed below:

Mol	Chain	Res	Type	RSRZ
4	F	240	LEU	6.8
2	D	279	GLY	6.7
2	D	276	THR	6.3
2	D	278	ARG	6.2
4	F	125	THR	6.1
4	F	177	GLY	6.0
4	F	152	SER	5.8
2	B	281	GLN	5.7
1	A	179	THR	5.7
4	F	143	GLU	5.7
4	F	381	HIS	5.7
4	F	173	ILE	5.6
2	D	277	SER	5.5
3	E	26	PRO	5.5
4	F	182	ILE	5.3
4	F	100	ILE	5.0
4	F	105	LEU	4.9
4	F	104	ASN	4.7
4	F	140	GLU	4.6

Continued on next page...

Continued from previous page...

Mol	Chain	Res	Type	RSRZ
3	E	27	PRO	4.5
4	F	103	THR	4.5
4	F	372	THR	4.5
4	F	131	PHE	4.5
4	F	259	GLY	4.5
4	F	89	GLU	4.4
4	F	169	LEU	4.4
3	E	25	LYS	4.3
4	F	283	ILE	4.3
2	D	285	ALA	4.3
4	F	243	HIS	4.2
2	D	280	SER	4.2
4	F	249	TYR	4.2
1	A	346	TRP	4.1
2	B	284	ARG	4.1
2	D	281	GLN	4.0
2	D	282	GLN	3.9
4	F	179	VAL	3.8
4	F	264	PHE	3.7
3	E	24	LEU	3.7
4	F	371	PRO	3.7
4	F	314	LEU	3.6
2	D	215	ARG	3.6
2	D	42	LEU	3.5
4	F	132	LEU	3.4
4	F	236	LYS	3.4
2	B	57	THR	3.4
4	F	99	VAL	3.4
4	F	346	LEU	3.4
4	F	147	TRP	3.4
4	F	161	LEU	3.4
1	A	282	TYR	3.4
2	B	1	MET	3.3
2	B	202	TYR	3.3
2	D	248	LEU	3.3
4	F	250	SER	3.2
4	F	134	ALA	3.2
4	F	253	TYR	3.2
4	F	379	HIS	3.2
1	A	196	GLU	3.1
4	F	242	ASN	3.1
4	F	17	VAL	3.1

Continued on next page...

Continued from previous page...

Mol	Chain	Res	Type	RSRZ
4	F	263	PHE	3.1
2	B	42	LEU	3.1
2	D	275	LEU	3.1
4	F	153	ALA	3.1
2	B	59	ASN	3.1
4	F	251	LYS	3.1
2	D	400	ARG	3.0
4	F	142	ARG	3.0
4	F	21	LEU	3.0
4	F	178	GLN	3.0
4	F	13	VAL	3.0
4	F	154	GLY	3.0
4	F	149	ALA	3.0
1	C	357	TYR	3.0
2	D	218	LYS	3.0
4	F	186	LEU	3.0
4	F	339	ALA	2.9
2	D	246	GLY	2.9
1	A	432	TYR	2.9
2	D	401	ARG	2.9
4	F	137	ARG	2.9
4	F	141	GLY	2.9
1	A	86	LEU	2.9
4	F	197	ARG	2.9
4	F	319	PHE	2.9
4	F	330	ILE	2.9
2	D	37	HIS	2.9
4	F	239	HIS	2.8
2	D	219	LEU	2.8
4	F	90	SER	2.8
2	B	276	THR	2.8
1	A	262	TYR	2.8
4	F	172	PHE	2.8
2	B	247	GLN	2.8
4	F	213	ILE	2.8
4	F	341	LYS	2.8
2	D	1	MET	2.8
4	F	245	ILE	2.7
4	F	176	GLN	2.7
4	F	295	LEU	2.7
2	D	249	ASN	2.7
4	F	254	GLY	2.7

Continued on next page...

Continued from previous page...

Mol	Chain	Res	Type	RSRZ
4	F	320	MET	2.7
1	C	350	GLY	2.7
2	D	182	VAL	2.7
4	F	342	LEU	2.7
2	D	195	VAL	2.6
4	F	244	CYS	2.6
2	D	415	GLU	2.6
4	F	102	PRO	2.6
4	F	135	TYR	2.6
4	F	256	TYR	2.6
2	D	304	ALA	2.6
4	F	127	GLU	2.6
4	F	20	LEU	2.6
3	E	28	SER	2.6
4	F	220	VAL	2.6
4	F	241	THR	2.6
2	B	49	ILE	2.6
4	F	199	PHE	2.6
4	F	234	GLN	2.6
1	A	68	VAL	2.5
2	D	189	LEU	2.5
4	F	232	ASN	2.5
2	D	293	GLN	2.5
2	D	241	CYS	2.5
2	D	210	TYR	2.5
4	F	216	TYR	2.5
2	B	285	ALA	2.5
4	F	170	LEU	2.4
1	A	339	ARG	2.4
1	C	179	THR	2.4
4	F	192	LEU	2.4
1	A	77	GLU	2.4
4	F	340	GLN	2.4
2	D	217	LEU	2.4
1	A	167	LEU	2.4
4	F	162	ILE	2.4
4	F	329	LEU	2.4
4	F	315	PHE	2.4
4	F	204	TRP	2.4
2	D	404	PHE	2.4
4	F	155	ALA	2.4
3	E	6	MET	2.3

Continued on next page...

Continued from previous page...

Mol	Chain	Res	Type	RSRZ
4	F	248	GLU	2.3
4	F	101	TYR	2.3
2	D	57	THR	2.3
1	C	341	ILE	2.3
4	F	148	ILE	2.3
2	D	216	THR	2.3
3	E	54	LEU	2.3
4	F	334	GLY	2.2
4	F	291	ILE	2.2
4	F	233	PHE	2.2
4	F	337	ALA	2.2
4	F	194	PRO	2.2
3	E	124	GLN	2.2
4	F	136	ASN	2.2
2	D	425	MET	2.2
2	D	250	ALA	2.2
4	F	292	ARG	2.2
4	F	344	ALA	2.2
2	D	46	LEU	2.2
4	F	129	GLU	2.2
4	F	27	TRP	2.1
2	D	387	LEU	2.1
1	A	342	GLN	2.1
1	C	177	VAL	2.1
4	F	376	ILE	2.1
2	D	312	TYR	2.1
2	D	119	LEU	2.1
3	E	53	LYS	2.1
1	A	348	PRO	2.1
2	B	318	ILE	2.1
2	D	255	LEU	2.1
2	D	369	ARG	2.1
4	F	223	THR	2.1
1	A	283	HIS	2.1
1	A	340	SER	2.1
4	F	285	LEU	2.1
4	F	45	ASN	2.1
2	D	238	VAL	2.1
4	F	191	LEU	2.1
4	F	375	PHE	2.1
2	B	62	VAL	2.0
4	F	321	VAL	2.0

Continued on next page...

Continued from previous page...

Mol	Chain	Res	Type	RSRZ
1	A	117	LEU	2.0
2	B	58	GLY	2.0
1	A	195	LEU	2.0
1	A	265	ILE	2.0
2	B	275	LEU	2.0
2	D	283	TYR	2.0
1	A	438	ASP	2.0

6.2 Non-standard residues in protein, DNA, RNA chains [i](#)

There are no non-standard protein/DNA/RNA residues in this entry.

6.3 Carbohydrates [i](#)

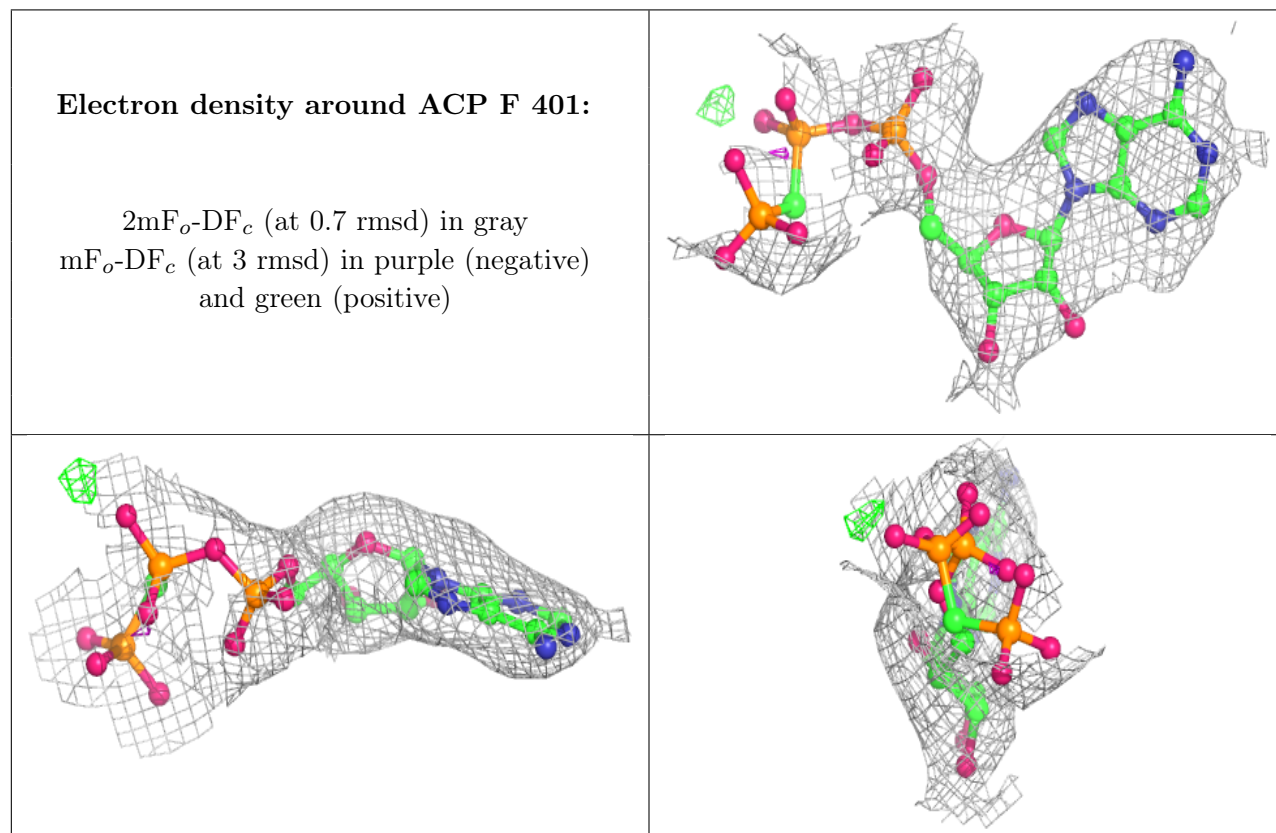
There are no monosaccharides in this entry.

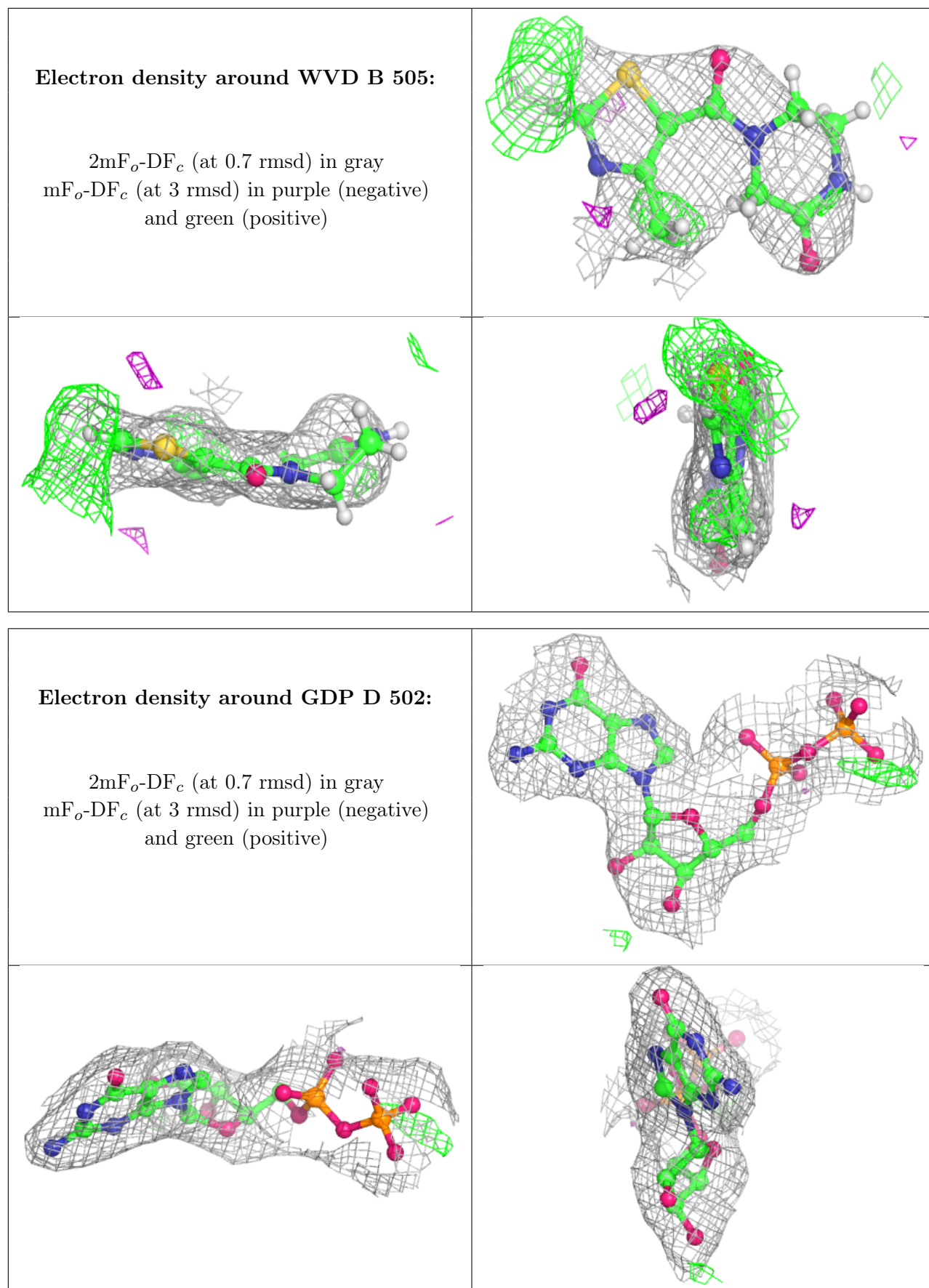
6.4 Ligands [i](#)

In the following table, the Atoms column lists the number of modelled atoms in the group and the number defined in the chemical component dictionary. The B-factors column lists the minimum, median, 95th percentile and maximum values of B factors of atoms in the group. The column labelled 'Q< 0.9' lists the number of atoms with occupancy less than 0.9.

Mol	Type	Chain	Res	Atoms	RSCC	RSR	B-factors(Å ²)	Q<0.9
7	CA	A	504	1/1	0.81	0.11	87,87,87,87	0
11	ACP	F	401	31/31	0.83	0.19	91,100,118,128	0
10	WVD	B	505	15/15	0.84	0.39	49,65,81,89	26
6	MG	F	402	1/1	0.92	0.08	84,84,84,84	0
7	CA	B	503	1/1	0.93	0.24	72,72,72,72	0
6	MG	D	503	1/1	0.94	0.18	61,61,61,61	0
9	MES	B	504	12/12	0.95	0.14	43,56,71,76	0
8	GDP	D	502	28/28	0.96	0.16	51,61,68,80	0
6	MG	A	502	1/1	0.97	0.11	45,45,45,45	0
6	MG	D	501	1/1	0.97	0.19	45,45,45,45	0
8	GDP	B	501	28/28	0.98	0.19	29,38,45,50	0
7	CA	A	503	1/1	0.98	0.17	76,76,76,76	0
5	GTP	A	501	32/32	0.98	0.17	33,43,51,54	0
5	GTP	C	501	32/32	0.98	0.20	29,39,44,49	0
7	CA	C	502	1/1	0.98	0.16	56,56,56,56	0
6	MG	B	502	1/1	0.99	0.20	34,34,34,34	0

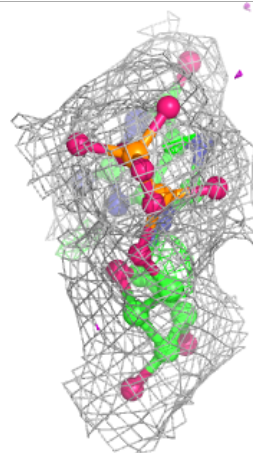
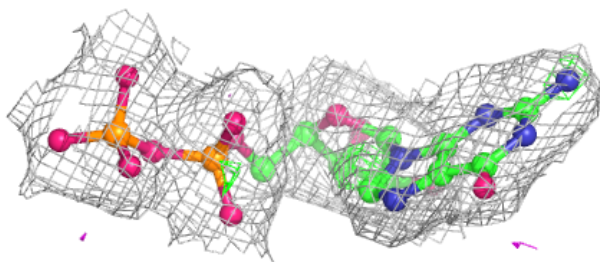
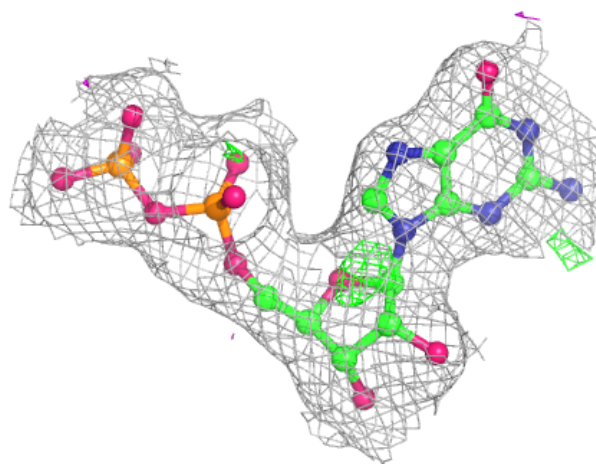
The following is a graphical depiction of the model fit to experimental electron density of all instances of the Ligand of Interest. In addition, ligands with molecular weight > 250 and outliers as shown on the geometry validation Tables will also be included. Each fit is shown from different orientation to approximate a three-dimensional view.

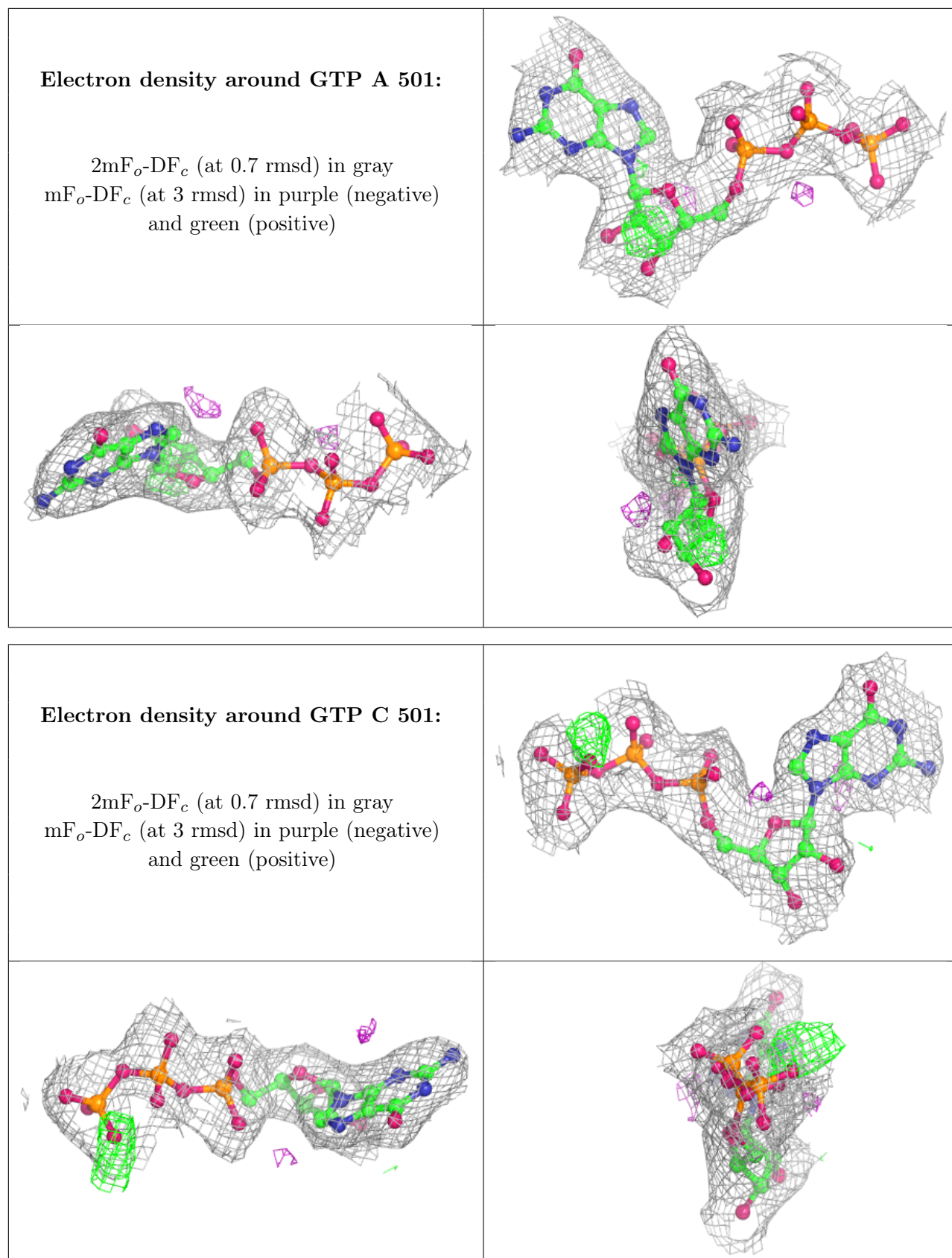




Electron density around GDP B 501:

$2mF_o-DF_c$ (at 0.7 rmsd) in gray
 mF_o-DF_c (at 3 rmsd) in purple (negative)
and green (positive)





6.5 Other polymers [i](#)

There are no such residues in this entry.