



# Full wwPDB X-ray Structure Validation Report ⓘ

Feb 28, 2024 – 10:07 PM EST

PDB ID : 5S5K  
Title : Tubulin-Z2472938267-complex  
Authors : Muehlethaler, T.; Gioia, D.; Prota, A.E.; Sharpe, M.E.; Cavalli, A.; Steinmetz, M.O.  
Deposited on : 2020-11-08  
Resolution : 2.41 Å(reported)

This is a Full wwPDB X-ray Structure Validation Report for a publicly released PDB entry.

We welcome your comments at [validation@mail.wwpdb.org](mailto:validation@mail.wwpdb.org)

A user guide is available at

<https://www.wwpdb.org/validation/2017/XrayValidationReportHelp>

with specific help available everywhere you see the ⓘ symbol.

The types of validation reports are described at

<http://www.wwpdb.org/validation/2017/FAQs#types>.

---

The following versions of software and data (see [references ⓘ](#)) were used in the production of this report:

MolProbity : 4.02b-467  
Mogul : 1.8.5 (274361), CSD as541be (2020)  
Xtriage (Phenix) : 1.13  
EDS : 2.36  
buster-report : 1.1.7 (2018)  
Percentile statistics : 20191225.v01 (using entries in the PDB archive December 25th 2019)  
Refmac : 5.8.0158  
CCP4 : 7.0.044 (Gargrove)  
Ideal geometry (proteins) : Engh & Huber (2001)  
Ideal geometry (DNA, RNA) : Parkinson et al. (1996)  
Validation Pipeline (wwPDB-VP) : 2.36

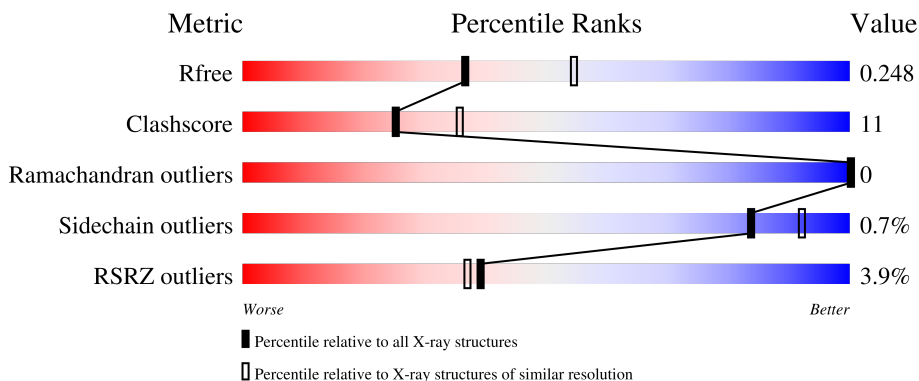
# 1 Overall quality at a glance i

The following experimental techniques were used to determine the structure:

*X-RAY DIFFRACTION*

The reported resolution of this entry is 2.41 Å.

Percentile scores (ranging between 0-100) for global validation metrics of the entry are shown in the following graphic. The table shows the number of entries on which the scores are based.



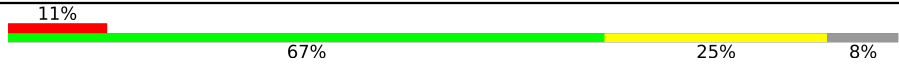
Metric	Whole archive (#Entries)	Similar resolution (#Entries, resolution range(Å))
$R_{free}$	130704	4647 (2.44-2.40)
Clashscore	141614	5161 (2.44-2.40)
Ramachandran outliers	138981	5073 (2.44-2.40)
Sidechain outliers	138945	5074 (2.44-2.40)
RSRZ outliers	127900	4543 (2.44-2.40)

The table below summarises the geometric issues observed across the polymeric chains and their fit to the electron density. The red, orange, yellow and green segments of the lower bar indicate the fraction of residues that contain outliers for  $\geq 3$ , 2, 1 and 0 types of geometric quality criteria respectively. A grey segment represents the fraction of residues that are not modelled. The numeric value for each fraction is indicated below the corresponding segment, with a dot representing fractions  $\leq 5\%$ . The upper red bar (where present) indicates the fraction of residues that have poor fit to the electron density. The numeric value is given above the bar.

Mol	Chain	Length	Quality of chain
1	A	451	<div style="display: flex; align-items: center;"> <div style="width: 2%; height: 10px; background-color: red; margin-right: 2px;"></div> <div style="width: 73%; height: 10px; background-color: green; margin-right: 2px;"></div> <div style="width: 24%; height: 10px; background-color: yellow; margin-right: 2px;"></div> <div style="width: 1%; height: 10px; background-color: grey; margin-right: 2px;"></div> </div> <p style="margin-left: 20px;">2%      73%      24%      .</p>
1	C	451	<div style="display: flex; align-items: center;"> <div style="width: 0%; height: 10px; background-color: red; margin-right: 2px;"></div> <div style="width: 80%; height: 10px; background-color: green; margin-right: 2px;"></div> <div style="width: 17%; height: 10px; background-color: yellow; margin-right: 2px;"></div> <div style="width: 3%; height: 10px; background-color: grey; margin-right: 2px;"></div> </div> <p style="margin-left: 20px;">%      80%      17%      .</p>
2	B	445	<div style="display: flex; align-items: center;"> <div style="width: 2%; height: 10px; background-color: red; margin-right: 2px;"></div> <div style="width: 77%; height: 10px; background-color: green; margin-right: 2px;"></div> <div style="width: 19%; height: 10px; background-color: yellow; margin-right: 2px;"></div> <div style="width: 2%; height: 10px; background-color: grey; margin-right: 2px;"></div> </div> <p style="margin-left: 20px;">2%      77%      19%      .</p>
2	D	445	<div style="display: flex; align-items: center;"> <div style="width: 3%; height: 10px; background-color: red; margin-right: 2px;"></div> <div style="width: 70%; height: 10px; background-color: green; margin-right: 2px;"></div> <div style="width: 26%; height: 10px; background-color: yellow; margin-right: 2px;"></div> <div style="width: 1%; height: 10px; background-color: grey; margin-right: 2px;"></div> </div> <p style="margin-left: 20px;">3%      70%      26%      .</p>
3	E	143	<div style="display: flex; align-items: center;"> <div style="width: 6%; height: 10px; background-color: red; margin-right: 2px;"></div> <div style="width: 66%; height: 10px; background-color: green; margin-right: 2px;"></div> <div style="width: 20%; height: 10px; background-color: yellow; margin-right: 2px;"></div> <div style="width: 8%; height: 10px; background-color: grey; margin-right: 2px;"></div> </div> <p style="margin-left: 20px;">6%      66%      20%      14%</p>

*Continued on next page...*

*Continued from previous page...*

Mol	Chain	Length	Quality of chain
4	F	384	 <p>A horizontal bar chart representing the quality of chain. The bar is divided into four segments: a red segment (11%), a green segment (67%), a yellow segment (25%), and a grey segment (8%).</p>

## 2 Entry composition i

There are 12 unique types of molecules in this entry. The entry contains 17797 atoms, of which 17 are hydrogens and 0 are deuteriums.

In the tables below, the ZeroOcc column contains the number of atoms modelled with zero occupancy, the AltConf column contains the number of residues with at least one atom in alternate conformation and the Trace column contains the number of residues modelled with at most 2 atoms.

- Molecule 1 is a protein called Tubulin alpha-1B chain.

Mol	Chain	Residues	Atoms					ZeroOcc	AltConf	Trace
			Total	C	N	O	S			
1	A	438	Total	C	N	O	S	0	0	0
			3424	2167	582	653	22			
1	C	440	Total	C	N	O	S	0	1	0
			3443	2178	585	657	23			

- Molecule 2 is a protein called Tubulin beta-2B chain.

Mol	Chain	Residues	Atoms					ZeroOcc	AltConf	Trace
			Total	C	N	O	S			
2	B	425	Total	C	N	O	S	1	1	0
			3359	2109	577	646	27			
2	D	429	Total	C	N	O	S	5	0	0
			3358	2107	573	651	27			

- Molecule 3 is a protein called Stathmin-4.

Mol	Chain	Residues	Atoms					ZeroOcc	AltConf	Trace
			Total	C	N	O	S			
3	E	123	Total	C	N	O	S	0	0	0
			1014	625	183	201	5			

There are 2 discrepancies between the modelled and reference sequences:

Chain	Residue	Modelled	Actual	Comment	Reference
E	3	MET	-	initiating methionine	UNP P63043
E	4	ALA	-	expression tag	UNP P63043

- Molecule 4 is a protein called Tubulin-Tyrosine Ligase.

Mol	Chain	Residues	Atoms					ZeroOcc	AltConf	Trace
			Total	C	N	O	S			
4	F	352	Total	C	N	O	S	0	0	0
			2877	1843	495	525	14			

There are 6 discrepancies between the modelled and reference sequences:

Chain	Residue	Modelled	Actual	Comment	Reference
F	379	HIS	-	expression tag	UNP E1BQ43
F	380	HIS	-	expression tag	UNP E1BQ43
F	381	HIS	-	expression tag	UNP E1BQ43
F	382	HIS	-	expression tag	UNP E1BQ43
F	383	HIS	-	expression tag	UNP E1BQ43
F	384	HIS	-	expression tag	UNP E1BQ43

- Molecule 5 is GUANOSINE-5'-TRIPHOSPHATE (three-letter code: GTP) (formula:  $C_{10}H_{16}N_5O_{14}P_3$ ).



Mol	Chain	Residues	Atoms				ZeroOcc	AltConf	
			Total	C	N	O			P
5	A	1	Total	C	N	O	P	0	0
			32	10	5	14	3		
5	C	1	Total	C	N	O	P	0	0
			32	10	5	14	3		

- Molecule 6 is MAGNESIUM ION (three-letter code: MG) (formula: Mg).

Mol	Chain	Residues	Atoms		ZeroOcc	AltConf
6	A	1	Total	Mg	0	0
			1	1		
6	B	1	Total	Mg	0	0
			1	1		
6	C	1	Total	Mg	0	0
			1	1		
6	D	1	Total	Mg	0	0
			1	1		

*Continued on next page...*

Continued from previous page...

Mol	Chain	Residues	Atoms		ZeroOcc	AltConf
6	F	1	Total	Mg	0	0
			1	1		

- Molecule 7 is CALCIUM ION (three-letter code: CA) (formula: Ca).

Mol	Chain	Residues	Atoms		ZeroOcc	AltConf
7	A	1	Total	Ca	0	0
			1	1		
7	B	1	Total	Ca	0	0
			1	1		
7	C	1	Total	Ca	0	0
			1	1		
7	E	1	Total	Ca	0	0
			1	1		

- Molecule 8 is GUANOSINE-5'-DIPHOSPHATE (three-letter code: GDP) (formula:  $C_{10}H_{15}N_5O_{11}P_2$ ).



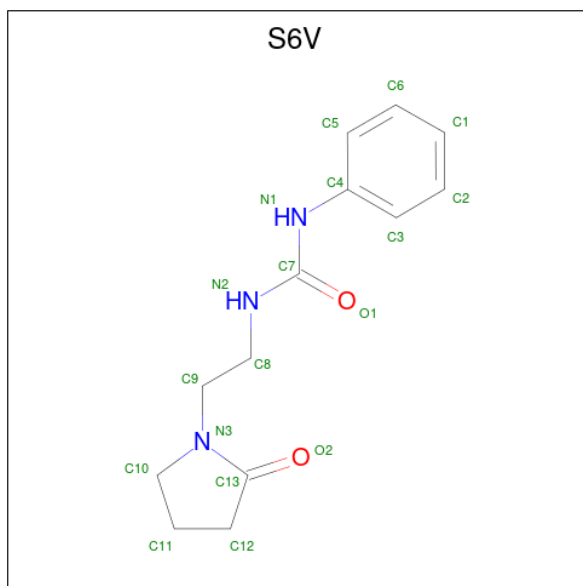
Mol	Chain	Residues	Atoms				ZeroOcc	AltConf	
8	B	1	Total	C	N	O	P	0	0
			28	10	5	11	2		
8	D	1	Total	C	N	O	P	0	0
			28	10	5	11	2		

- Molecule 9 is 2-(N-MORPHOLINO)-ETHANESULFONIC ACID (three-letter code: MES) (formula:  $C_6H_{13}NO_4S$ ).



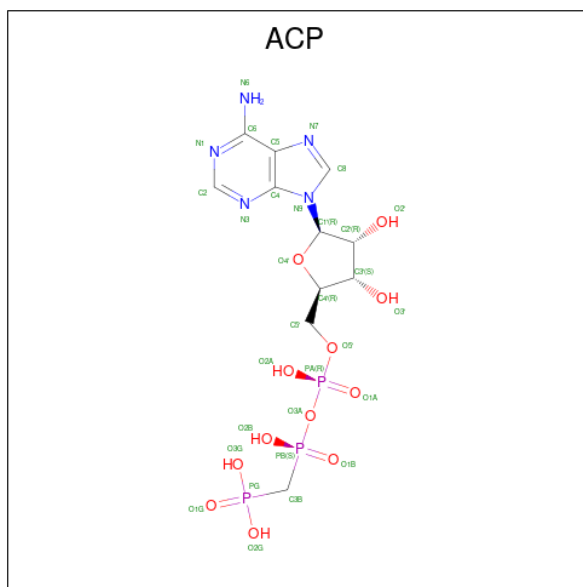
Mol	Chain	Residues	Atoms					ZeroOcc	AltConf
			Total	C	N	O	S		
9	B	1	12	6	1	4	1	0	0

- Molecule 10 is 1-[2-(2-oxidanylidenepyrrolidin-1-yl)ethyl]-3-phenyl-urea (three-letter code: S6V) (formula:  $C_{13}H_{17}N_3O_2$ ) (labeled as "Ligand of Interest" by depositor).



Mol	Chain	Residues	Atoms					ZeroOcc	AltConf
			Total	C	H	N	O		
10	C	1	35	13	17	3	2	0	0

- Molecule 11 is PHOSPHOMETHYLPHOSPHONIC ACID ADENYLATE ESTER (three-letter code: ACP) (formula:  $C_{11}H_{18}N_5O_{12}P_3$ ).



Mol	Chain	Residues	Atoms					ZeroOcc	AltConf
			Total	C	N	O	P		
11	F	1	31	11	5	12	3	0	0

- Molecule 12 is water.

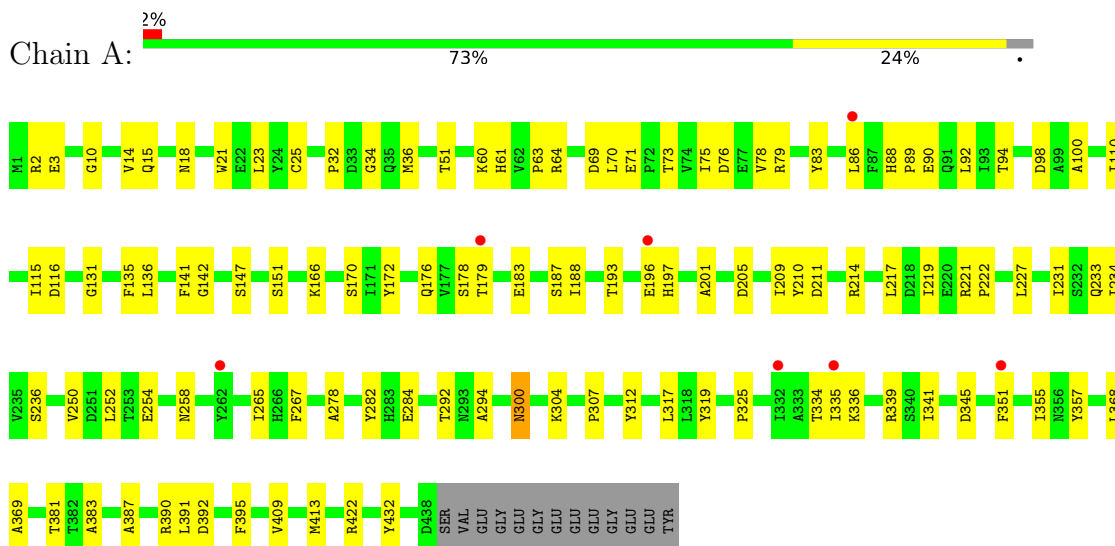
Mol	Chain	Residues	Atoms		ZeroOcc	AltConf
12	A	22	Total	O	0	0
			22	22		
12	B	26	Total	O	0	0
			26	26		
12	C	52	Total	O	0	0
			52	52		
12	D	9	Total	O	0	0
			9	9		
12	E	4	Total	O	0	0
			4	4		
12	F	2	Total	O	0	0
			2	2		



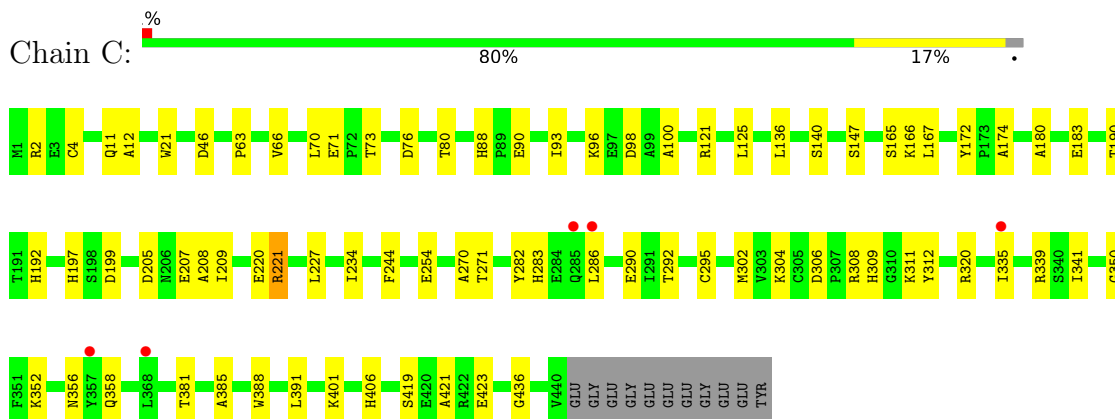
### 3 Residue-property plots [i](#)

These plots are drawn for all protein, RNA, DNA and oligosaccharide chains in the entry. The first graphic for a chain summarises the proportions of the various outlier classes displayed in the second graphic. The second graphic shows the sequence view annotated by issues in geometry and electron density. Residues are color-coded according to the number of geometric quality criteria for which they contain at least one outlier: green = 0, yellow = 1, orange = 2 and red = 3 or more. A red dot above a residue indicates a poor fit to the electron density ( $RSRZ > 2$ ). Stretches of 2 or more consecutive residues without any outlier are shown as a green connector. Residues present in the sample, but not in the model, are shown in grey.

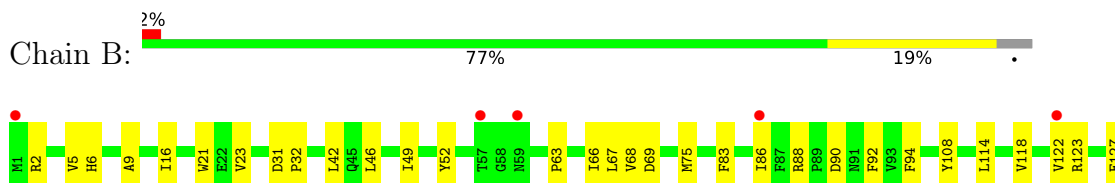
- Molecule 1: Tubulin alpha-1B chain

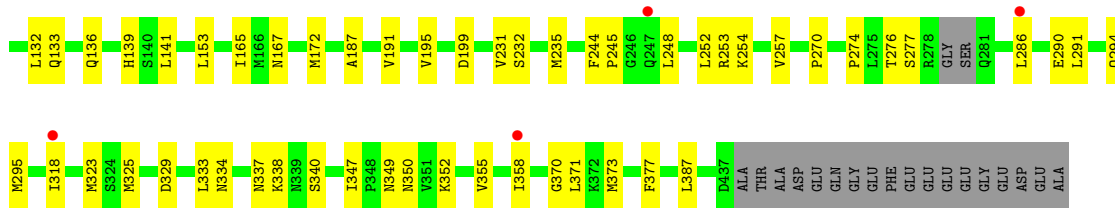


- Molecule 1: Tubulin alpha-1B chain

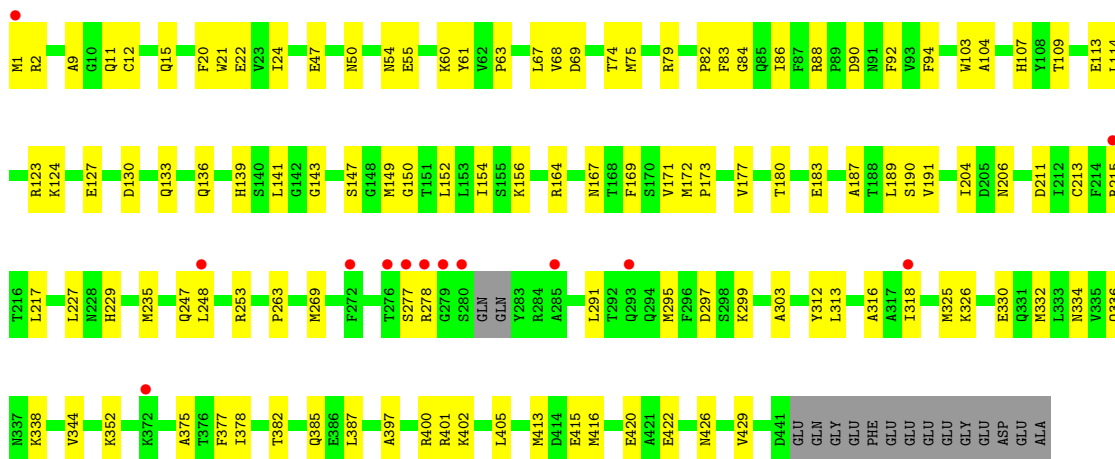


- Molecule 2: Tubulin beta-2B chain

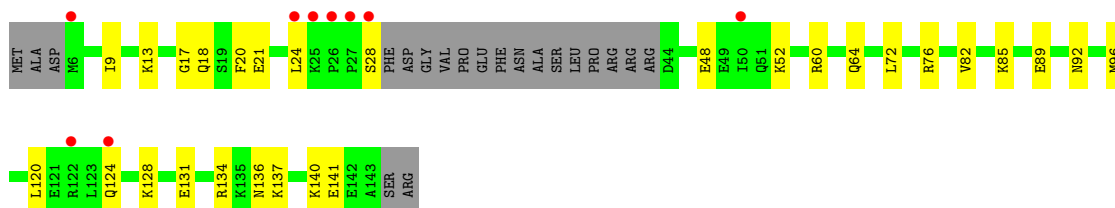




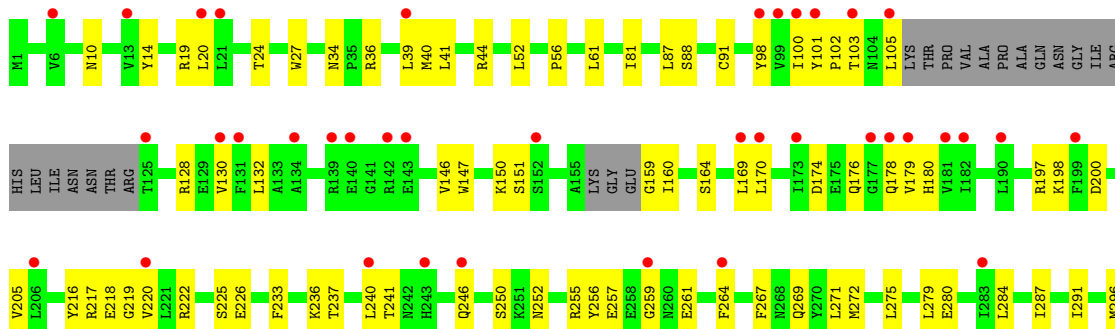
● Molecule 2: Tubulin beta-2B chain



● Molecule 3: Stathmin-4



● Molecule 4: Tubulin-Tyrosine Ligase





## 4 Data and refinement statistics

Property	Value	Source
Space group	P 21 21 21	Depositor
Cell constants a, b, c, $\alpha$ , $\beta$ , $\gamma$	105.46Å 160.78Å 178.27Å 90.00° 90.00° 90.00°	Depositor
Resolution (Å)	73.28 – 2.41 119.39 – 2.41	Depositor EDS
% Data completeness (in resolution range)	98.8 (73.28-2.41) 98.8 (119.39-2.41)	Depositor EDS
$R_{merge}$	0.10	Depositor
$R_{sym}$	(Not available)	Depositor
$\langle I/\sigma(I) \rangle$ <sup>1</sup>	1.12 (at 2.40Å)	Xtrriage
Refinement program	PHENIX 1.18.2_3874	Depositor
R, $R_{free}$	0.214 , 0.248 0.215 , 0.248	Depositor DCC
$R_{free}$ test set	5734 reflections (4.95%)	wwPDB-VP
Wilson B-factor (Å <sup>2</sup> )	68.3	Xtrriage
Anisotropy	0.320	Xtrriage
Bulk solvent $k_{sol}$ (e/Å <sup>3</sup> ), $B_{sol}$ (Å <sup>2</sup> )	0.31 , 56.3	EDS
L-test for twinning <sup>2</sup>	$\langle  L  \rangle = 0.50$ , $\langle L^2 \rangle = 0.34$	Xtrriage
Estimated twinning fraction	No twinning to report.	Xtrriage
$F_o, F_c$ correlation	0.95	EDS
Total number of atoms	17797	wwPDB-VP
Average B, all atoms (Å <sup>2</sup> )	89.0	wwPDB-VP

Xtrriage's analysis on translational NCS is as follows: *The largest off-origin peak in the Patterson function is 3.05% of the height of the origin peak. No significant pseudotranslation is detected.*

<sup>1</sup>Intensities estimated from amplitudes.

<sup>2</sup>Theoretical values of  $\langle |L| \rangle$ ,  $\langle L^2 \rangle$  for acentric reflections are 0.5, 0.333 respectively for untwinned datasets, and 0.375, 0.2 for perfectly twinned datasets.

## 5 Model quality [i](#)

### 5.1 Standard geometry [i](#)

Bond lengths and bond angles in the following residue types are not validated in this section: S6V, CA, MG, ACP, GDP, MES, GTP

The Z score for a bond length (or angle) is the number of standard deviations the observed value is removed from the expected value. A bond length (or angle) with  $|Z| > 5$  is considered an outlier worth inspection. RMSZ is the root-mean-square of all Z scores of the bond lengths (or angles).

Mol	Chain	Bond lengths		Bond angles	
		RMSZ	# Z  >5	RMSZ	# Z  >5
1	A	0.26	0/3502	0.41	0/4754
1	C	0.27	0/3521	0.43	0/4780
2	B	0.26	0/3433	0.41	0/4647
2	D	0.26	0/3431	0.41	0/4647
3	E	0.24	0/1022	0.35	0/1356
4	F	0.24	0/2944	0.39	0/3978
All	All	0.26	0/17853	0.41	0/24162

There are no bond length outliers.

There are no bond angle outliers.

There are no chirality outliers.

There are no planarity outliers.

### 5.2 Too-close contacts [i](#)

In the following table, the Non-H and H(model) columns list the number of non-hydrogen atoms and hydrogen atoms in the chain respectively. The H(added) column lists the number of hydrogen atoms added and optimized by MolProbity. The Clashes column lists the number of clashes within the asymmetric unit, whereas Symm-Clashes lists symmetry-related clashes.

Mol	Chain	Non-H	H(model)	H(added)	Clashes	Symm-Clashes
1	A	3424	0	3334	84	0
1	C	3443	0	3352	57	0
2	B	3359	0	3235	67	0
2	D	3358	0	3231	84	0
3	E	1014	0	1029	22	0
4	F	2877	0	2839	79	0
5	A	32	0	12	2	0

*Continued on next page...*

Continued from previous page...

Mol	Chain	Non-H	H(model)	H(added)	Clashes	Symm-Clashes
5	C	32	0	12	1	0
6	A	1	0	0	0	0
6	B	1	0	0	0	0
6	C	1	0	0	0	0
6	D	1	0	0	0	0
6	F	1	0	0	0	0
7	A	1	0	0	0	0
7	B	1	0	0	0	0
7	C	1	0	0	0	0
7	E	1	0	0	0	0
8	B	28	0	12	0	0
8	D	28	0	12	2	0
9	B	12	0	12	2	0
10	C	18	17	0	0	0
11	F	31	0	14	6	0
12	A	22	0	0	1	0
12	B	26	0	0	0	0
12	C	52	0	0	4	0
12	D	9	0	0	0	0
12	E	4	0	0	1	0
12	F	2	0	0	1	0
All	All	17780	17	17094	371	0

The all-atom clashscore is defined as the number of clashes found per 1000 atoms (including hydrogen atoms). The all-atom clashscore for this structure is 11.

All (371) close contacts within the same asymmetric unit are listed below, sorted by their clash magnitude.

Atom-1	Atom-2	Interatomic distance (Å)	Clash overlap (Å)
2:D:334:ASN:HD21	2:D:338:LYS:HE3	1.37	0.90
1:A:335:ILE:HG23	1:A:339:ARG:HG3	1.53	0.90
4:F:102:PRO:HG2	4:F:105:LEU:HD13	1.59	0.85
2:D:217:LEU:HA	2:D:277:SER:HB3	1.61	0.82
2:D:385:GLN:HB2	2:D:429:VAL:HG13	1.63	0.81
1:C:209:ILE:HD11	1:C:302:MET:HE3	1.64	0.79
1:A:70:LEU:HD13	1:A:110:ILE:HG21	1.65	0.78
4:F:236:LYS:HB3	4:F:240:LEU:HD13	1.65	0.77
1:A:211:ASP:OD2	1:A:304:LYS:NZ	2.18	0.76
4:F:128:ARG:NH2	4:F:174:ASP:OD1	2.19	0.76
2:B:83:PHE:O	2:B:86:ILE:HG22	1.87	0.74
2:D:397:ALA:O	2:D:401:ARG:NH1	2.22	0.72

Continued on next page...

*Continued from previous page...*

Atom-1	Atom-2	Interatomic distance (Å)	Clash overlap (Å)
4:F:320:MET:HG3	4:F:330:ILE:HD11	1.70	0.71
1:C:221:ARG:HG3	2:D:325:MET:HG2	1.71	0.71
1:C:76:ASP:O	1:C:80:THR:HG22	1.91	0.70
4:F:146:VAL:HG22	4:F:164:SER:HB3	1.74	0.70
2:B:337:ASN:OD1	4:F:36:ARG:HD3	1.92	0.69
1:C:234:ILE:HG12	1:C:302:MET:HE2	1.74	0.69
1:C:270:ALA:O	1:C:302:MET:HG2	1.92	0.69
1:C:312:TYR:CD1	1:C:341:ILE:HG23	2.28	0.68
2:D:136:GLN:HA	2:D:167:ASN:O	1.94	0.68
2:D:11:GLN:HA	2:D:74:THR:HG21	1.74	0.68
3:E:85:LYS:O	3:E:89:GLU:HG3	1.95	0.67
4:F:225:SER:OG	4:F:250:SER:OG	2.10	0.67
2:B:286:LEU:HD12	2:B:290:GLU:OE1	1.96	0.66
4:F:91:CYS:HA	12:F:501:HOH:O	1.94	0.66
2:D:83:PHE:O	2:D:86:ILE:HG22	1.95	0.66
2:B:244:PHE:HB3	2:B:245:PRO:HD2	1.78	0.66
4:F:147:TRP:HB2	4:F:169:LEU:CD1	2.26	0.66
2:D:21:TRP:CZ3	2:D:63:PRO:HB3	2.31	0.65
2:D:334:ASN:ND2	2:D:338:LYS:HE3	2.09	0.65
1:A:71:GLU:OE2	1:A:73:THR:OG1	2.13	0.65
2:D:332:MET:O	2:D:336:GLN:HG3	1.96	0.65
4:F:132:LEU:HD21	4:F:170:LEU:HD11	1.79	0.64
1:A:351:PHE:HE1	3:E:24:LEU:HD11	1.61	0.64
2:B:141:LEU:HD12	2:B:172:MET:SD	2.37	0.64
2:D:172:MET:HG3	2:D:387:LEU:HD11	1.79	0.64
3:E:72:LEU:O	3:E:76:ARG:HG2	1.97	0.64
4:F:10:ASN:HB2	4:F:44:ARG:HH22	1.63	0.64
1:C:209:ILE:HD11	1:C:302:MET:CE	2.29	0.63
2:B:69:ASP:O	2:B:94:PHE:HA	1.98	0.63
2:D:171:VAL:HA	2:D:204:ILE:O	1.98	0.63
4:F:371:PRO:HA	4:F:372:THR:C	2.19	0.63
2:B:136:GLN:HA	2:B:167:ASN:O	1.98	0.62
4:F:241:THR:OG1	11:F:401:ACP:O3'	2.10	0.62
4:F:314:LEU:HD22	4:F:350:ILE:HD11	1.80	0.62
1:A:178:SER:OG	1:A:183:GLU:OE1	2.10	0.62
3:E:85:LYS:NZ	12:E:301:HOH:O	2.29	0.62
1:C:286:LEU:HA	1:C:290:GLU:OE1	2.00	0.61
1:C:320:ARG:HA	1:C:356:ASN:O	1.99	0.61
1:C:93:ILE:HD11	1:C:121:ARG:HG3	1.81	0.61
4:F:159:GLY:C	4:F:160:ILE:HD12	2.21	0.61
1:C:2:ARG:HD2	12:C:635:HOH:O	2.00	0.61

*Continued on next page...*

*Continued from previous page...*

Atom-1	Atom-2	Interatomic distance (Å)	Clash overlap (Å)
4:F:102:PRO:HG2	4:F:105:LEU:CD1	2.30	0.61
2:D:291:LEU:HG	2:D:375:ALA:HB2	1.82	0.61
1:C:180:ALA:O	1:C:183:GLU:HG3	2.00	0.61
1:C:335:ILE:HG23	1:C:339:ARG:HG3	1.82	0.60
2:D:147:SER:HB2	2:D:190:SER:OG	2.01	0.60
1:A:179:THR:HA	2:B:352:LYS:HD2	1.82	0.60
4:F:197:ARG:NH1	4:F:257:GLU:OE2	2.30	0.60
3:E:120:LEU:O	3:E:124:GLN:HG3	2.02	0.60
1:C:96:LYS:NZ	2:D:130:ASP:OD1	2.34	0.60
4:F:280:GLU:OE1	4:F:284:LEU:HD23	2.02	0.60
1:C:419:SER:O	1:C:423:GLU:HG3	2.01	0.59
4:F:103:THR:HG23	4:F:128:ARG:NH2	2.17	0.59
2:B:23:VAL:HG21	2:B:232:SER:HB3	1.85	0.59
1:C:88:HIS:HE1	1:C:90:GLU:HG3	1.67	0.58
1:A:392:ASP:HB3	1:A:422:ARG:NH2	2.18	0.58
1:C:172:TYR:CE2	1:C:391:LEU:HD22	2.38	0.58
4:F:246:GLN:O	4:F:250:SER:HB3	2.03	0.58
1:A:100:ALA:HA	2:B:254:LYS:HG3	1.83	0.58
2:B:2:ARG:HB2	2:B:133:GLN:CG	2.33	0.58
1:A:36:MET:HB3	1:A:61:HIS:CE1	2.38	0.58
2:D:11:GLN:O	2:D:15:GLN:HG2	2.04	0.58
2:D:67:LEU:HD22	2:D:92:PHE:CE2	2.39	0.58
1:A:345:ASP:HB3	3:E:28:SER:HB2	1.84	0.58
4:F:331:GLU:OE2	11:F:401:ACP:O3G	2.22	0.58
2:D:269:MET:HG3	2:D:303:ALA:HB3	1.86	0.58
2:B:325:MET:HE2	2:B:355:VAL:HG21	1.86	0.57
1:A:21:TRP:CZ3	1:A:63:PRO:HB3	2.39	0.57
2:B:123:ARG:O	2:B:127:GLU:HG3	2.05	0.57
1:C:4[A]:CYS:SG	1:C:136:LEU:HG	2.44	0.57
1:C:88:HIS:CE1	1:C:90:GLU:HG3	2.39	0.57
2:B:187:ALA:O	2:B:191:VAL:HG23	2.05	0.57
2:B:67:LEU:HD22	2:B:92:PHE:CE2	2.39	0.57
4:F:225:SER:O	4:F:252:ASN:HB2	2.05	0.57
4:F:287:ILE:HG23	4:F:319:PHE:CE2	2.40	0.57
4:F:176:GLN:HB3	4:F:178:GLN:NE2	2.20	0.57
1:C:423:GLU:HG2	12:C:649:HOH:O	2.04	0.57
3:E:48:GLU:HG2	3:E:52:LYS:HE3	1.87	0.57
1:A:98:ASP:HB2	5:A:501:GTP:O2G	2.04	0.56
1:C:292:THR:HG22	1:C:335:ILE:CD1	2.35	0.56
2:B:274:PRO:HB3	2:B:286:LEU:CD2	2.36	0.56
3:E:137:LYS:HE2	3:E:141:GLU:OE2	2.06	0.56

*Continued on next page...*



*Continued from previous page...*

Atom-1	Atom-2	Interatomic distance (Å)	Clash overlap (Å)
1:A:151:SER:HB2	1:A:193:THR:OG1	2.05	0.56
2:D:422:GLU:HG2	2:D:426:ASN:ND2	2.21	0.56
2:B:75:MET:HE3	2:B:92:PHE:HD2	1.70	0.56
2:D:103:TRP:CE3	2:D:189:LEU:HD13	2.41	0.56
2:D:152:LEU:O	2:D:156:LYS:HG2	2.05	0.56
1:A:136:LEU:HD21	1:A:252:LEU:HD21	1.88	0.56
2:D:402:LYS:HE2	2:D:415:GLU:OE1	2.05	0.56
2:B:199:ASP:OD1	9:B:504:MES:H62	2.05	0.55
2:B:333:LEU:HD13	4:F:56:PRO:O	2.05	0.55
2:D:177:VAL:HG21	2:D:206:ASN:HB3	1.88	0.55
2:B:2:ARG:HB2	2:B:133:GLN:HG3	1.88	0.55
1:A:265:ILE:HG23	1:A:432:TYR:CZ	2.41	0.55
1:A:188:ILE:HD12	1:A:395:PHE:HB2	1.89	0.55
2:D:150:GLY:O	2:D:154:ILE:HG13	2.07	0.55
1:A:210:TYR:CE1	1:A:222:PRO:HD2	2.42	0.55
1:C:234:ILE:HG12	1:C:302:MET:CE	2.37	0.55
2:D:382:THR:O	2:D:385:GLN:HG2	2.06	0.55
2:D:88:ARG:NH1	2:D:90:ASP:HB2	2.22	0.55
2:B:274:PRO:HB3	2:B:286:LEU:HD22	1.89	0.54
1:A:135:PHE:C	1:A:136:LEU:HD23	2.28	0.54
1:A:217:LEU:HD21	1:A:368:LEU:HD23	1.90	0.54
4:F:219:GLY:HA3	4:F:264:PHE:CZ	2.43	0.54
1:A:336:LYS:HD2	1:A:341:ILE:HD12	1.90	0.54
1:A:21:TRP:CE3	1:A:63:PRO:HB3	2.43	0.54
1:C:71:GLU:OE1	1:C:73:THR:OG1	2.19	0.54
1:A:166:LYS:HE2	1:A:197:HIS:O	2.08	0.54
2:D:75:MET:HE3	2:D:92:PHE:HD2	1.72	0.53
4:F:318:ASP:OD2	11:F:401:ACP:O2G	2.26	0.53
1:A:88:HIS:HD2	1:A:90:GLU:HB2	1.73	0.53
1:A:214:ARG:HG2	1:A:219:ILE:O	2.08	0.53
1:A:250:VAL:HG12	1:A:254:GLU:OE1	2.08	0.53
1:C:244:PHE:CD1	1:C:358:GLN:HG2	2.43	0.53
1:A:172:TYR:HB3	1:A:205:ASP:HA	1.91	0.53
2:D:21:TRP:CE3	2:D:63:PRO:HB3	2.43	0.53
4:F:226:GLU:HG3	4:F:237:THR:HG22	1.89	0.53
4:F:320:MET:CG	4:F:330:ILE:HD11	2.38	0.53
4:F:87:LEU:O	4:F:88:SER:OG	2.22	0.53
4:F:205:VAL:HG21	4:F:291:ILE:HD13	1.91	0.53
2:B:42:LEU:H	2:B:42:LEU:HD12	1.73	0.53
1:A:142:GLY:HA3	1:A:183:GLU:OE2	2.09	0.53
2:B:16:ILE:HD13	2:B:231:VAL:HG11	1.90	0.53

*Continued on next page...*

*Continued from previous page...*

Atom-1	Atom-2	Interatomic distance (Å)	Clash overlap (Å)
2:B:253[A]:ARG:NH1	9:B:504:MES:O3S	2.42	0.53
2:D:69:ASP:O	2:D:94:PHE:HA	2.09	0.53
4:F:371:PRO:HA	4:F:372:THR:HB	1.89	0.53
2:D:124:LYS:C	2:D:124:LYS:HD3	2.30	0.52
2:D:402:LYS:HB3	2:D:405:LEU:HD12	1.91	0.52
2:D:1:MET:CE	2:D:50:ASN:HB2	2.39	0.52
2:D:211:ASP:O	2:D:215:ARG:HB2	2.09	0.52
2:D:397:ALA:HA	2:D:400:ARG:NH1	2.24	0.52
2:B:75:MET:HE3	2:B:92:PHE:CD2	2.44	0.52
2:D:2:ARG:HB3	2:D:133:GLN:HG2	1.91	0.52
4:F:147:TRP:HB2	4:F:169:LEU:HD11	1.90	0.52
2:D:143:GLY:HA3	8:D:501:GDP:O3A	2.10	0.52
4:F:200:ASP:OD1	4:F:222:ARG:HB2	2.10	0.52
1:C:292:THR:HG22	1:C:335:ILE:HD12	1.92	0.52
2:B:253[B]:ARG:O	2:B:257:VAL:HG23	2.09	0.52
4:F:222:ARG:O	4:F:241:THR:HB	2.10	0.52
1:A:209:ILE:HG22	1:A:227:LEU:HD22	1.91	0.52
2:D:55:GLU:HA	2:D:60:LYS:O	2.09	0.52
4:F:220:VAL:HG11	4:F:339:ALA:HB2	1.92	0.51
1:C:220:GLU:HB3	2:D:326:LYS:HD2	1.91	0.51
2:D:75:MET:HE3	2:D:92:PHE:CD2	2.45	0.51
2:D:169:PHE:CE2	2:D:235:MET:HG2	2.45	0.51
2:B:172:MET:HG3	2:B:387:LEU:HD11	1.92	0.51
2:D:180:THR:O	2:D:183:GLU:HG3	2.11	0.51
1:A:10:GLY:O	1:A:14:VAL:HG23	2.11	0.51
4:F:267:PHE:CE2	4:F:279:LEU:HD13	2.46	0.51
4:F:371:PRO:CA	4:F:372:THR:HB	2.40	0.51
1:A:69:ASP:O	1:A:94:THR:HA	2.11	0.51
1:C:166:LYS:HE2	1:C:197:HIS:O	2.11	0.51
1:C:66:VAL:HG23	1:C:125:LEU:CD1	2.41	0.51
4:F:14:TYR:HB3	4:F:41:LEU:HD13	1.92	0.51
1:A:187:SER:HB3	1:A:391:LEU:HD21	1.93	0.51
2:B:244:PHE:CE1	2:B:358:ILE:HD12	2.46	0.50
2:D:107:HIS:O	2:D:152:LEU:HD22	2.10	0.50
1:A:79:ARG:HG2	1:A:92:LEU:HD12	1.93	0.50
1:C:271:THR:HG21	1:C:295:CYS:O	2.11	0.50
2:D:169:PHE:CD2	2:D:235:MET:HG2	2.47	0.50
1:C:306:ASP:HB3	1:C:309:HIS:CE1	2.47	0.50
4:F:198:LYS:HE2	11:F:401:ACP:O2'	2.11	0.50
1:A:70:LEU:HD13	1:A:110:ILE:CG2	2.39	0.50
1:A:141:PHE:CE1	1:A:170:SER:HB3	2.46	0.50

*Continued on next page...*

*Continued from previous page...*

Atom-1	Atom-2	Interatomic distance (Å)	Clash overlap (Å)
2:D:2:ARG:HB3	2:D:133:GLN:CG	2.42	0.50
4:F:296:MET:SD	4:F:380:HIS:HB2	2.51	0.50
3:E:128:LYS:O	3:E:128:LYS:HD3	2.12	0.49
1:A:141:PHE:HB3	1:A:187:SER:OG	2.12	0.49
1:A:15:GLN:NE2	5:A:501:GTP:O6	2.43	0.49
2:B:253[A]:ARG:O	2:B:257:VAL:HG23	2.12	0.49
4:F:10:ASN:CB	4:F:44:ARG:HH22	2.24	0.49
2:B:46:LEU:HA	2:B:49:ILE:HB	1.93	0.49
2:B:165:ILE:HG21	2:B:252:LEU:HB3	1.95	0.49
2:B:334:ASN:O	2:B:338:LYS:HG3	2.12	0.49
2:B:231:VAL:O	2:B:235:MET:HG3	2.13	0.49
1:C:21:TRP:CZ3	1:C:63:PRO:HB3	2.48	0.49
1:A:294:ALA:O	1:A:300:ASN:ND2	2.45	0.49
1:A:336:LYS:HG3	3:E:24:LEU:HD13	1.95	0.49
1:A:317:LEU:HB3	1:A:319:TYR:CE1	2.48	0.48
1:C:136:LEU:HD23	1:C:167:LEU:HB2	1.96	0.48
2:D:248:LEU:HD11	2:D:352:LYS:HB3	1.94	0.48
1:C:209:ILE:HG22	1:C:227:LEU:HD22	1.94	0.48
2:D:9:ALA:HA	2:D:68:VAL:O	2.13	0.48
1:A:312:TYR:CE2	1:A:341:ILE:HG23	2.48	0.48
1:C:11:GLN:HE22	2:D:247:GLN:NE2	2.11	0.48
2:B:370:GLY:O	2:B:371:LEU:HD23	2.13	0.48
4:F:98:TYR:CE1	4:F:130:VAL:HG12	2.48	0.48
2:D:313:LEU:HD23	2:D:344:VAL:HG11	1.95	0.48
2:D:387:LEU:HD23	2:D:387:LEU:C	2.34	0.48
1:A:227:LEU:O	1:A:231:ILE:HG13	2.14	0.48
2:D:133:GLN:O	2:D:164:ARG:HD3	2.12	0.48
1:A:32:PRO:HA	1:A:83:TYR:CD2	2.48	0.48
1:A:355:ILE:O	3:E:17:GLY:HA3	2.14	0.48
2:B:66:ILE:HD12	2:B:122:VAL:HG22	1.96	0.48
1:C:350:GLY:HA3	12:C:639:HOH:O	2.14	0.48
4:F:205:VAL:CG2	4:F:291:ILE:HD13	2.44	0.48
1:A:392:ASP:HB3	1:A:422:ARG:CZ	2.43	0.47
3:E:48:GLU:CG	3:E:52:LYS:HE3	2.44	0.47
4:F:371:PRO:HA	4:F:372:THR:O	2.14	0.47
1:A:88:HIS:HB2	1:A:89:PRO:HD2	1.96	0.47
2:D:318:ILE:N	2:D:318:ILE:HD12	2.28	0.47
4:F:100:ILE:HD12	4:F:128:ARG:HA	1.96	0.47
1:A:292:THR:HG22	1:A:335:ILE:CD1	2.45	0.47
1:A:278:ALA:HA	1:A:369:ALA:HB2	1.97	0.47
3:E:13:LYS:HG2	3:E:18:GLN:OE1	2.14	0.47

*Continued on next page...*

*Continued from previous page...*

Atom-1	Atom-2	Interatomic distance (Å)	Clash overlap (Å)
1:C:70:LEU:HB2	1:C:98:ASP:HA	1.95	0.47
1:A:265:ILE:HG23	1:A:432:TYR:CE1	2.50	0.47
4:F:269:GLN:HA	4:F:272:MET:HE2	1.96	0.47
1:C:254:GLU:HG2	1:C:352:LYS:HE2	1.97	0.46
4:F:98:TYR:HE1	4:F:130:VAL:HG12	1.80	0.46
1:A:395:PHE:CD1	1:A:422:ARG:HD3	2.50	0.46
2:B:6:HIS:CD2	2:B:21:TRP:HE1	2.33	0.46
2:D:416:MET:O	2:D:420:GLU:HG3	2.16	0.46
2:B:347:ILE:HG22	2:B:350:ASN:HB3	1.97	0.46
1:A:390:ARG:NH2	12:A:602:HOH:O	2.48	0.46
4:F:217:ARG:HG3	4:F:218:GLU:HG2	1.98	0.46
2:B:88:ARG:NH1	2:B:90:ASP:HB2	2.31	0.46
2:D:67:LEU:N	2:D:67:LEU:HD12	2.31	0.46
2:D:295:MET:SD	2:D:375:ALA:HB1	2.55	0.46
2:D:297:ASP:OD2	2:D:299:LYS:HB2	2.16	0.46
1:A:100:ALA:HB1	2:B:253[B]:ARG:HG2	1.97	0.46
1:A:325:PRO:HB3	3:E:20:PHE:CE1	2.51	0.46
4:F:267:PHE:CE2	4:F:271:LEU:HD11	2.51	0.46
1:C:98:ASP:HB2	5:C:501:GTP:O2G	2.15	0.46
2:D:187:ALA:O	2:D:191:VAL:HG23	2.16	0.46
2:D:422:GLU:HG2	2:D:426:ASN:HD21	1.81	0.46
1:C:385:ALA:HA	1:C:388:TRP:CD1	2.52	0.45
2:D:295:MET:HE2	2:D:377:PHE:HB2	1.98	0.45
4:F:10:ASN:HB2	4:F:44:ARG:NH2	2.28	0.45
2:B:318:ILE:N	2:B:318:ILE:HD12	2.30	0.45
2:D:54:ASN:O	2:D:61:TYR:HA	2.16	0.45
2:D:217:LEU:CA	2:D:277:SER:HB3	2.41	0.45
2:D:114:LEU:HD23	2:D:149:MET:HE1	1.97	0.45
4:F:225:SER:HB2	4:F:252:ASN:O	2.16	0.45
1:A:2:ARG:HB3	1:A:131:GLY:O	2.16	0.45
1:A:76:ASP:OD1	1:A:79:ARG:NH1	2.48	0.45
1:A:100:ALA:HB2	2:B:253[A]:ARG:HD2	1.98	0.45
2:B:114:LEU:O	2:B:114:LEU:HG	2.16	0.45
1:C:282:TYR:O	1:C:283:HIS:HB2	2.16	0.45
1:A:188:ILE:HD11	1:A:392:ASP:HA	1.99	0.45
2:B:329:ASP:O	2:B:333:LEU:HG	2.16	0.45
1:C:208:ALA:HB2	1:C:304:LYS:HG3	1.98	0.45
2:B:118:VAL:HG11	2:B:153:LEU:HD11	1.98	0.45
1:A:201:ALA:HB3	1:A:267:PHE:CD2	2.52	0.44
2:B:323:MET:HB3	2:B:373:MET:HE2	1.99	0.44
4:F:39:LEU:HD12	4:F:61:LEU:O	2.17	0.44

*Continued on next page...*

*Continued from previous page...*

Atom-1	Atom-2	Interatomic distance (Å)	Clash overlap (Å)
1:A:100:ALA:CB	2:B:253[B]:ARG:HG2	2.47	0.44
1:C:66:VAL:HG23	1:C:125:LEU:HD11	1.99	0.44
1:C:401:LYS:NZ	12:C:603:HOH:O	2.49	0.44
2:D:20:PHE:CZ	2:D:24:ILE:HD13	2.52	0.44
4:F:287:ILE:HG23	4:F:319:PHE:CZ	2.52	0.44
4:F:298:ILE:HD12	4:F:302:ILE:HD13	2.00	0.44
1:A:409:VAL:HA	1:A:413:MET:O	2.18	0.44
1:C:406:HIS:CG	2:D:263:PRO:HD3	2.53	0.44
2:D:109:THR:O	2:D:113:GLU:HG2	2.17	0.44
2:D:141:LEU:HD12	2:D:172:MET:SD	2.58	0.44
4:F:226:GLU:HG3	4:F:237:THR:CG2	2.48	0.44
1:A:23:LEU:HD23	1:A:236:SER:HB2	1.99	0.44
1:A:187:SER:CB	1:A:391:LEU:HD21	2.47	0.44
1:A:234:ILE:HD12	1:A:234:ILE:N	2.33	0.44
2:D:104:ALA:HB2	2:D:413:MET:SD	2.58	0.44
4:F:222:ARG:NH2	4:F:318:ASP:OD1	2.50	0.44
2:B:295:MET:CG	2:B:377:PHE:HB2	2.48	0.44
2:D:12:CYS:HB2	8:D:501:GDP:C8	2.53	0.44
4:F:372:THR:O	4:F:372:THR:HG22	2.18	0.44
1:C:234:ILE:HD12	1:C:234:ILE:H	1.83	0.43
2:D:22:GLU:HG2	2:D:83:PHE:CD1	2.53	0.43
4:F:19:ARG:HD2	4:F:19:ARG:O	2.18	0.43
4:F:259:GLY:O	4:F:261:GLU:HG3	2.19	0.43
4:F:267:PHE:HE2	4:F:279:LEU:HD13	1.83	0.43
1:A:179:THR:HG21	2:B:248:LEU:CB	2.47	0.43
1:C:12:ALA:HB3	1:C:140:SER:HB3	1.99	0.43
2:D:22:GLU:OE2	2:D:82:PRO:HG2	2.18	0.43
2:D:295:MET:HB2	2:D:295:MET:HE3	1.65	0.43
1:A:136:LEU:HD23	1:A:136:LEU:N	2.33	0.43
2:B:16:ILE:HG21	2:B:231:VAL:HG11	2.01	0.43
2:B:325:MET:CE	2:B:355:VAL:HG21	2.49	0.43
1:A:25:CYS:SG	1:A:86:LEU:HD11	2.59	0.43
1:A:141:PHE:O	1:A:147:SER:HB3	2.19	0.43
2:B:67:LEU:N	2:B:67:LEU:HD12	2.34	0.43
1:C:100:ALA:HB2	2:D:253:ARG:HD2	2.01	0.43
2:D:312:TYR:CE1	2:D:377:PHE:HZ	2.37	0.43
4:F:216:TYR:CD2	4:F:346:LEU:HD13	2.54	0.43
1:A:284:GLU:CD	1:A:284:GLU:H	2.22	0.43
2:B:191:VAL:O	2:B:195:VAL:HG23	2.19	0.43
1:C:172:TYR:HB3	1:C:205:ASP:HA	2.01	0.43
1:C:234:ILE:HD12	1:C:234:ILE:N	2.34	0.43

*Continued on next page...*

*Continued from previous page...*

Atom-1	Atom-2	Interatomic distance (Å)	Clash overlap (Å)
2:B:88:ARG:HH11	2:B:90:ASP:HB2	1.83	0.43
2:D:326:LYS:O	2:D:330:GLU:HG3	2.18	0.43
2:D:213:CYS:HA	2:D:217:LEU:HB2	1.99	0.43
4:F:151:SER:HB3	4:F:180:HIS:CD2	2.53	0.43
2:B:108:TYR:CG	3:E:82:VAL:HG11	2.53	0.43
1:C:46:ASP:N	1:C:46:ASP:OD1	2.52	0.43
2:D:114:LEU:HD23	2:D:149:MET:CE	2.49	0.43
1:A:34:GLY:HA3	1:A:60:LYS:HG3	2.00	0.42
1:A:176:GLN:CG	4:F:56:PRO:HB3	2.49	0.42
4:F:20:LEU:O	4:F:24:THR:HG23	2.18	0.42
4:F:275:LEU:N	4:F:275:LEU:HD22	2.34	0.42
1:A:3:GLU:HG2	1:A:64:ARG:CZ	2.49	0.42
1:A:233:GLN:HG3	1:A:368:LEU:CD1	2.49	0.42
2:B:21:TRP:CH2	2:B:52:TYR:HB3	2.54	0.42
1:A:18:ASN:OD1	1:A:78:VAL:HG22	2.19	0.42
2:B:42:LEU:HD12	2:B:42:LEU:N	2.33	0.42
4:F:255:ARG:HD3	4:F:256:TYR:CZ	2.54	0.42
1:A:357:TYR:CZ	3:E:17:GLY:HA2	2.55	0.42
1:C:192:HIS:CG	1:C:421:ALA:HA	2.54	0.42
2:B:270:PRO:HA	2:B:377:PHE:O	2.19	0.42
2:B:276:THR:HG22	2:B:277:SER:O	2.19	0.42
4:F:27:TRP:HZ2	4:F:359:PHE:HB2	1.84	0.42
3:E:92:ASN:O	3:E:96:MET:HG2	2.20	0.42
3:E:131:GLU:OE2	3:E:134:ARG:NH2	2.51	0.42
1:C:391:LEU:HD12	1:C:391:LEU:HA	1.82	0.42
1:A:88:HIS:CD2	1:A:90:GLU:HB2	2.54	0.42
1:C:165:SER:HA	1:C:199:ASP:OD2	2.19	0.42
11:F:401:ACP:O3G	11:F:401:ACP:O1B	2.37	0.42
1:C:174:ALA:HB1	1:C:207:GLU:HB2	2.01	0.41
3:E:60:ARG:O	3:E:64:GLN:HG3	2.20	0.41
3:E:136:ASN:O	3:E:140:LYS:HG2	2.20	0.41
4:F:150:LYS:HD2	11:F:401:ACP:O2A	2.19	0.41
4:F:371:PRO:HA	4:F:372:THR:CB	2.50	0.41
2:B:9:ALA:HA	2:B:68:VAL:O	2.20	0.41
2:B:21:TRP:CZ3	2:B:63:PRO:HB3	2.55	0.41
2:B:118:VAL:O	2:B:122:VAL:HG23	2.20	0.41
2:D:213:CYS:SG	2:D:227:LEU:HD23	2.60	0.41
1:C:311:LYS:HD2	1:C:436:GLY:O	2.20	0.41
1:A:2:ARG:O	1:A:51:THR:HG22	2.20	0.41
2:D:114:LEU:HG	2:D:114:LEU:O	2.20	0.41
4:F:40:MET:HE3	4:F:52:LEU:HD21	2.02	0.41

*Continued on next page...*

*Continued from previous page...*

Atom-1	Atom-2	Interatomic distance (Å)	Clash overlap (Å)
1:A:254:GLU:HG2	1:A:258:ASN:ND2	2.35	0.41
2:B:31:ASP:HB2	2:B:32:PRO:CD	2.50	0.41
1:C:147:SER:HB2	1:C:190:THR:HB	2.03	0.41
1:A:334:THR:HG22	1:A:334:THR:O	2.21	0.41
1:A:335:ILE:O	1:A:339:ARG:HB2	2.21	0.41
4:F:146:VAL:HG11	4:F:233:PHE:CZ	2.55	0.41
4:F:151:SER:HB3	4:F:180:HIS:CG	2.56	0.41
1:A:75:ILE:HD12	1:A:94:THR:HG22	2.02	0.41
1:A:387:ALA:HA	1:A:390:ARG:HD3	2.03	0.41
2:B:349:ASN:O	2:B:352:LYS:HE2	2.20	0.41
3:E:9:ILE:HD11	3:E:21:GLU:OE1	2.20	0.41
1:A:307:PRO:HA	1:A:383:ALA:HB2	2.03	0.41
2:B:340:SER:HB2	4:F:34:ASN:HD21	1.86	0.41
2:B:5:VAL:HG23	2:B:132:LEU:CD1	2.51	0.40
2:D:123:ARG:O	2:D:127:GLU:HG3	2.22	0.40
2:D:173:PRO:HG3	2:D:187:ALA:HB2	2.03	0.40
2:D:316:ALA:HB3	2:D:378:ILE:HB	2.03	0.40
2:B:235:MET:HB3	2:B:235:MET:HE2	1.82	0.40
4:F:100:ILE:CD1	4:F:128:ARG:HA	2.51	0.40
4:F:205:VAL:O	4:F:314:LEU:HD12	2.21	0.40
1:A:115:ILE:HG23	1:A:116:ASP:N	2.37	0.40
1:A:196:GLU:HA	1:A:196:GLU:OE1	2.21	0.40
1:C:341:ILE:HD12	1:C:341:ILE:N	2.37	0.40
2:D:79:ARG:O	2:D:84:GLY:HA3	2.20	0.40
3:E:9:ILE:CG1	3:E:21:GLU:HB3	2.51	0.40
4:F:101:TYR:CD2	4:F:179:VAL:HG22	2.57	0.40
2:B:290:GLU:O	2:B:294:GLN:HG3	2.22	0.40
2:D:387:LEU:HD23	2:D:387:LEU:O	2.22	0.40
2:D:75:MET:CE	2:D:92:PHE:HD2	2.34	0.40
4:F:81:ILE:HG12	4:F:87:LEU:HD13	2.03	0.40
4:F:320:MET:O	4:F:327:VAL:HA	2.21	0.40

There are no symmetry-related clashes.

## 5.3 Torsion angles

### 5.3.1 Protein backbone

In the following table, the Percentiles column shows the percent Ramachandran outliers of the chain as a percentile score with respect to all X-ray entries followed by that with respect to entries of similar resolution.

The Analysed column shows the number of residues for which the backbone conformation was analysed, and the total number of residues.

Mol	Chain	Analysed	Favoured	Allowed	Outliers	Percentiles	
1	A	436/451 (97%)	425 (98%)	11 (2%)	0	100	100
1	C	439/451 (97%)	429 (98%)	10 (2%)	0	100	100
2	B	422/445 (95%)	409 (97%)	13 (3%)	0	100	100
2	D	425/445 (96%)	414 (97%)	11 (3%)	0	100	100
3	E	119/143 (83%)	119 (100%)	0	0	100	100
4	F	344/384 (90%)	329 (96%)	15 (4%)	0	100	100
All	All	2185/2319 (94%)	2125 (97%)	60 (3%)	0	100	100

There are no Ramachandran outliers to report.

### 5.3.2 Protein sidechains [i](#)

In the following table, the Percentiles column shows the percent sidechain outliers of the chain as a percentile score with respect to all X-ray entries followed by that with respect to entries of similar resolution.

The Analysed column shows the number of residues for which the sidechain conformation was analysed, and the total number of residues.

Mol	Chain	Analysed	Rotameric	Outliers	Percentiles	
1	A	369/379 (97%)	365 (99%)	4 (1%)	73	86
1	C	372/379 (98%)	369 (99%)	3 (1%)	81	91
2	B	368/383 (96%)	366 (100%)	2 (0%)	88	95
2	D	368/383 (96%)	364 (99%)	4 (1%)	73	86
3	E	110/127 (87%)	110 (100%)	0	100	100
4	F	315/342 (92%)	315 (100%)	0	100	100
All	All	1902/1993 (95%)	1889 (99%)	13 (1%)	84	92

All (13) residues with a non-rotameric sidechain are listed below:

Mol	Chain	Res	Type
1	A	221	ARG
1	A	282	TYR
1	A	300	ASN
1	A	381	THR

*Continued on next page...*



*Continued from previous page...*

Mol	Chain	Res	Type
2	B	139	HIS
2	B	291	LEU
1	C	221	ARG
1	C	308	ARG
1	C	381	THR
2	D	47	GLU
2	D	139	HIS
2	D	229	HIS
2	D	278	ARG

Sometimes sidechains can be flipped to improve hydrogen bonding and reduce clashes. All (13) such sidechains are listed below:

Mol	Chain	Res	Type
1	A	85	GLN
1	A	88	HIS
2	B	15	GLN
2	B	282	GLN
2	B	294	GLN
1	C	11	GLN
1	C	256	GLN
2	D	167	ASN
4	F	178	GLN
4	F	196	HIS
4	F	229	ASN
4	F	269	GLN
4	F	333	ASN

### 5.3.3 RNA [i](#)

There are no RNA molecules in this entry.

### 5.4 Non-standard residues in protein, DNA, RNA chains [i](#)

There are no non-standard protein/DNA/RNA residues in this entry.

### 5.5 Carbohydrates [i](#)

There are no monosaccharides in this entry.

## 5.6 Ligand geometry

Of 16 ligands modelled in this entry, 9 are monoatomic - leaving 7 for Mogul analysis.

In the following table, the Counts columns list the number of bonds (or angles) for which Mogul statistics could be retrieved, the number of bonds (or angles) that are observed in the model and the number of bonds (or angles) that are defined in the Chemical Component Dictionary. The Link column lists molecule types, if any, to which the group is linked. The Z score for a bond length (or angle) is the number of standard deviations the observed value is removed from the expected value. A bond length (or angle) with  $|Z| > 2$  is considered an outlier worth inspection. RMSZ is the root-mean-square of all Z scores of the bond lengths (or angles).

Mol	Type	Chain	Res	Link	Bond lengths			Bond angles		
					Counts	RMSZ	# Z  > 2	Counts	RMSZ	# Z  > 2
11	ACP	F	401	6	27,33,33	1.38	5 (18%)	32,52,52	1.52	4 (12%)
5	GTP	C	501	6	26,34,34	1.14	2 (7%)	32,54,54	1.45	7 (21%)
8	GDP	B	501	6	24,30,30	1.00	1 (4%)	30,47,47	1.16	3 (10%)
9	MES	B	504	-	12,12,12	2.15	1 (8%)	14,16,16	1.83	5 (35%)
5	GTP	A	501	6	26,34,34	1.15	2 (7%)	32,54,54	1.43	6 (18%)
8	GDP	D	501	6	24,30,30	0.93	1 (4%)	30,47,47	1.18	4 (13%)
10	S6V	C	504	-	19,19,19	1.30	2 (10%)	24,24,24	0.95	1 (4%)

In the following table, the Chirals column lists the number of chiral outliers, the number of chiral centers analysed, the number of these observed in the model and the number defined in the Chemical Component Dictionary. Similar counts are reported in the Torsion and Rings columns. '2' means no outliers of that kind were identified.

Mol	Type	Chain	Res	Link	Chirals	Torsions	Rings
11	ACP	F	401	6	-	12/15/38/38	0/3/3/3
5	GTP	C	501	6	-	8/18/38/38	0/3/3/3
8	GDP	B	501	6	-	3/12/32/32	0/3/3/3
9	MES	B	504	-	-	3/6/14/14	0/1/1/1
5	GTP	A	501	6	-	7/18/38/38	0/3/3/3
8	GDP	D	501	6	-	2/12/32/32	0/3/3/3
10	S6V	C	504	-	-	0/10/20/20	0/2/2/2

All (14) bond length outliers are listed below:

Mol	Chain	Res	Type	Atoms	Z	Observed(Å)	Ideal(Å)
9	B	504	MES	C8-S	-7.17	1.67	1.77
5	C	501	GTP	C5-C6	-3.99	1.39	1.47
5	A	501	GTP	C5-C6	-3.97	1.39	1.47

*Continued on next page...*

Continued from previous page...

Mol	Chain	Res	Type	Atoms	Z	Observed(Å)	Ideal(Å)
10	C	504	S6V	C7-N1	3.43	1.44	1.37
11	F	401	ACP	PG-O3G	2.93	1.61	1.54
11	F	401	ACP	PG-O2G	2.92	1.61	1.54
11	F	401	ACP	PB-O3A	2.61	1.61	1.58
11	F	401	ACP	C5-C4	2.55	1.47	1.40
10	C	504	S6V	C5-C4	2.54	1.43	1.39
8	B	501	GDP	C6-N1	-2.53	1.34	1.37
8	D	501	GDP	C6-N1	-2.26	1.34	1.37
11	F	401	ACP	PB-O2B	2.26	1.61	1.56
5	A	501	GTP	C2-N3	2.20	1.38	1.33
5	C	501	GTP	C2-N3	2.04	1.38	1.33

All (30) bond angle outliers are listed below:

Mol	Chain	Res	Type	Atoms	Z	Observed(°)	Ideal(°)
11	F	401	ACP	PB-O3A-PA	-4.40	118.62	132.56
11	F	401	ACP	C3'-C2'-C1'	3.61	106.41	100.98
9	B	504	MES	C5-N4-C3	3.39	116.46	108.83
5	C	501	GTP	PA-O3A-PB	-3.21	121.83	132.83
11	F	401	ACP	N3-C2-N1	-3.14	123.76	128.68
8	B	501	GDP	PA-O3A-PB	-3.12	122.12	132.83
5	A	501	GTP	C5-C6-N1	3.11	119.44	113.95
5	A	501	GTP	C8-N7-C5	3.07	108.84	102.99
5	A	501	GTP	PA-O3A-PB	-3.03	122.44	132.83
8	D	501	GDP	PA-O3A-PB	-3.02	122.48	132.83
5	C	501	GTP	C5-C6-N1	2.99	119.23	113.95
5	C	501	GTP	C8-N7-C5	2.94	108.59	102.99
5	C	501	GTP	PB-O3B-PG	-2.82	123.13	132.83
5	A	501	GTP	C2-N1-C6	-2.81	119.92	125.10
5	C	501	GTP	C2-N1-C6	-2.78	119.98	125.10
5	A	501	GTP	PB-O3B-PG	-2.64	123.76	132.83
9	B	504	MES	O2S-S-C8	2.62	110.07	106.92
11	F	401	ACP	C4-C5-N7	-2.58	106.71	109.40
9	B	504	MES	O1S-S-C8	2.56	110.00	106.92
8	B	501	GDP	C8-N7-C5	2.54	107.82	102.99
10	C	504	S6V	C4-N1-C7	-2.51	121.47	126.61
9	B	504	MES	O3S-S-C8	2.50	109.81	105.77
8	D	501	GDP	C8-N7-C5	2.36	107.49	102.99
8	B	501	GDP	C5-C6-N1	2.35	118.10	113.95
5	C	501	GTP	O6-C6-C5	-2.27	119.94	124.37
8	D	501	GDP	C3'-C2'-C1'	2.23	104.33	100.98
8	D	501	GDP	C5-C6-N1	2.16	117.77	113.95

Continued on next page...

*Continued from previous page...*

Mol	Chain	Res	Type	Atoms	Z	Observed(°)	Ideal(°)
5	A	501	GTP	O6-C6-C5	-2.09	120.28	124.37
5	C	501	GTP	N2-C2-N1	2.09	121.15	116.71
9	B	504	MES	C7-N4-C5	2.03	116.43	111.23

There are no chirality outliers.

All (35) torsion outliers are listed below:

Mol	Chain	Res	Type	Atoms
5	A	501	GTP	C5'-O5'-PA-O1A
5	A	501	GTP	C5'-O5'-PA-O2A
5	C	501	GTP	C5'-O5'-PA-O1A
8	B	501	GDP	C5'-O5'-PA-O1A
8	B	501	GDP	C5'-O5'-PA-O2A
8	D	501	GDP	C5'-O5'-PA-O3A
8	D	501	GDP	C5'-O5'-PA-O2A
11	F	401	ACP	PB-C3B-PG-O1G
11	F	401	ACP	PB-C3B-PG-O2G
11	F	401	ACP	PB-C3B-PG-O3G
11	F	401	ACP	PG-C3B-PB-O1B
11	F	401	ACP	PG-C3B-PB-O3A
11	F	401	ACP	C5'-O5'-PA-O1A
11	F	401	ACP	C5'-O5'-PA-O2A
5	A	501	GTP	PB-O3B-PG-O1G
5	C	501	GTP	PB-O3B-PG-O1G
5	C	501	GTP	C5'-O5'-PA-O3A
5	C	501	GTP	C5'-O5'-PA-O2A
9	B	504	MES	C7-C8-S-O3S
9	B	504	MES	C7-C8-S-O1S
9	B	504	MES	C7-C8-S-O2S
11	F	401	ACP	PG-C3B-PB-O2B
5	C	501	GTP	PB-O3A-PA-O2A
11	F	401	ACP	C3'-C4'-C5'-O5'
5	A	501	GTP	PB-O3B-PG-O2G
5	A	501	GTP	PB-O3B-PG-O3G
5	C	501	GTP	PB-O3B-PG-O2G
5	C	501	GTP	PB-O3B-PG-O3G
11	F	401	ACP	PB-O3A-PA-O1A
11	F	401	ACP	PB-O3A-PA-O2A
5	A	501	GTP	C5'-O5'-PA-O3A
8	B	501	GDP	C5'-O5'-PA-O3A
11	F	401	ACP	C5'-O5'-PA-O3A
5	A	501	GTP	PB-O3A-PA-O2A

*Continued on next page...*

*Continued from previous page...*

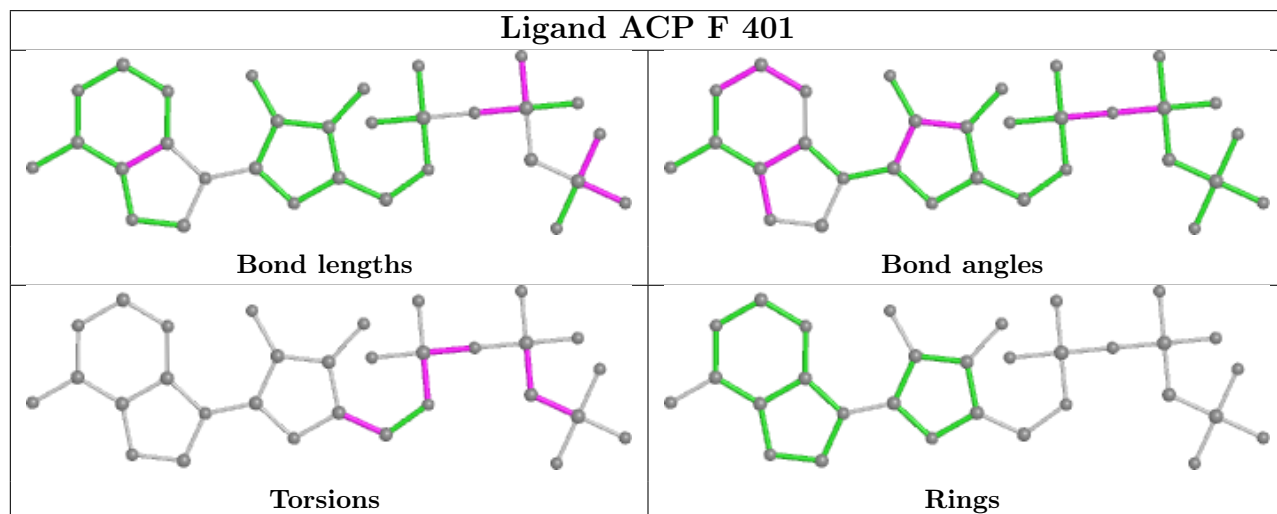
Mol	Chain	Res	Type	Atoms
5	C	501	GTP	PB-O3A-PA-O1A

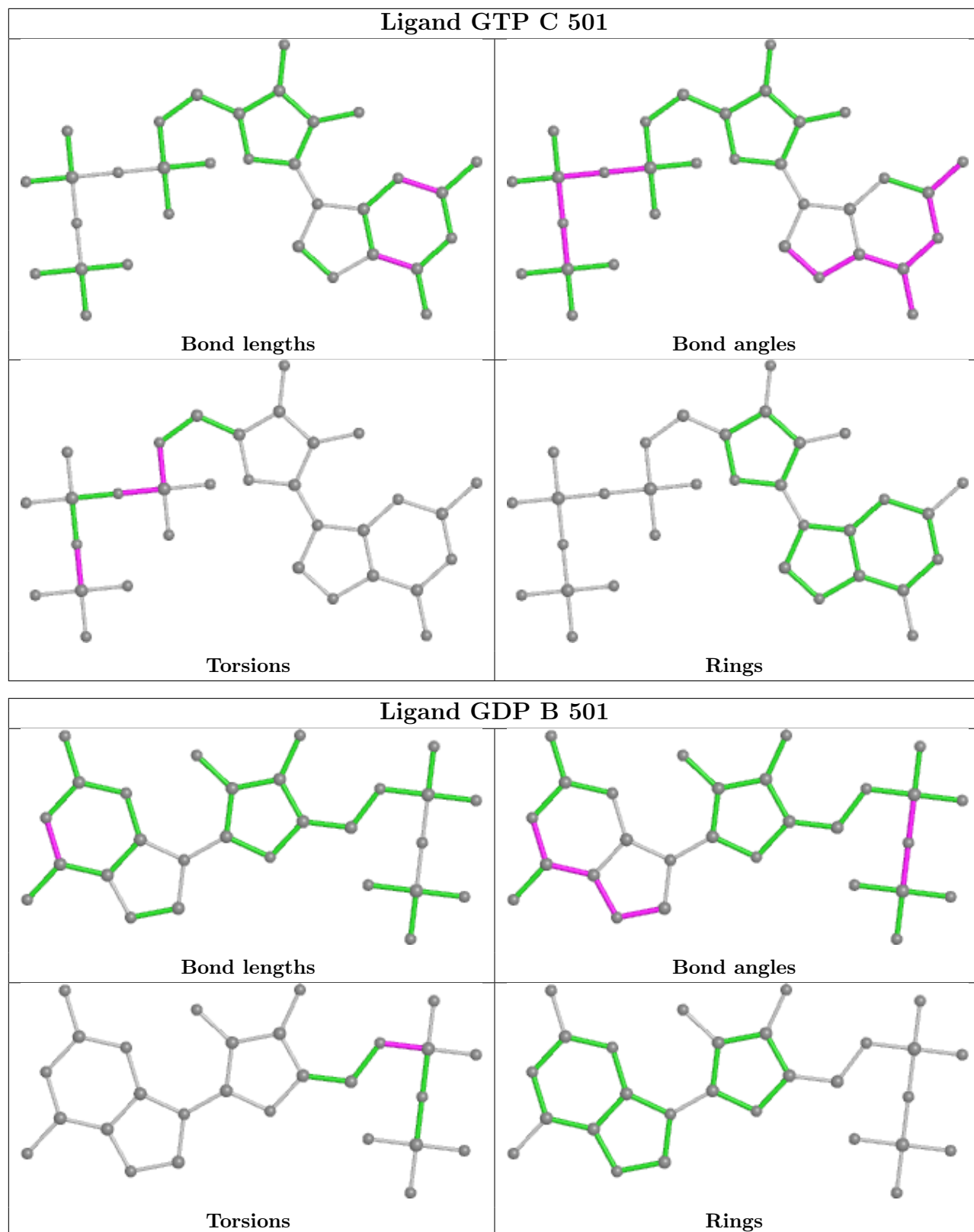
There are no ring outliers.

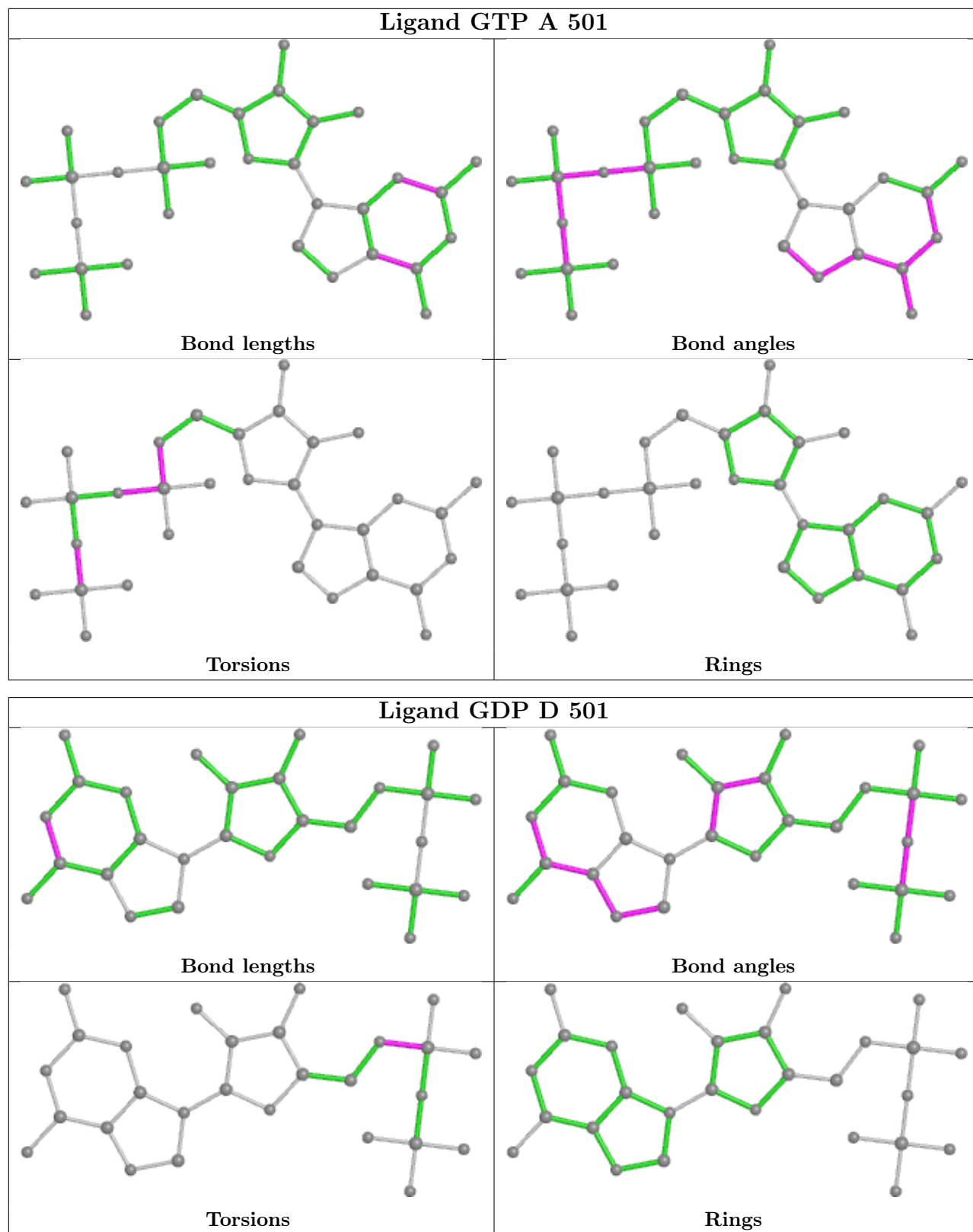
5 monomers are involved in 13 short contacts:

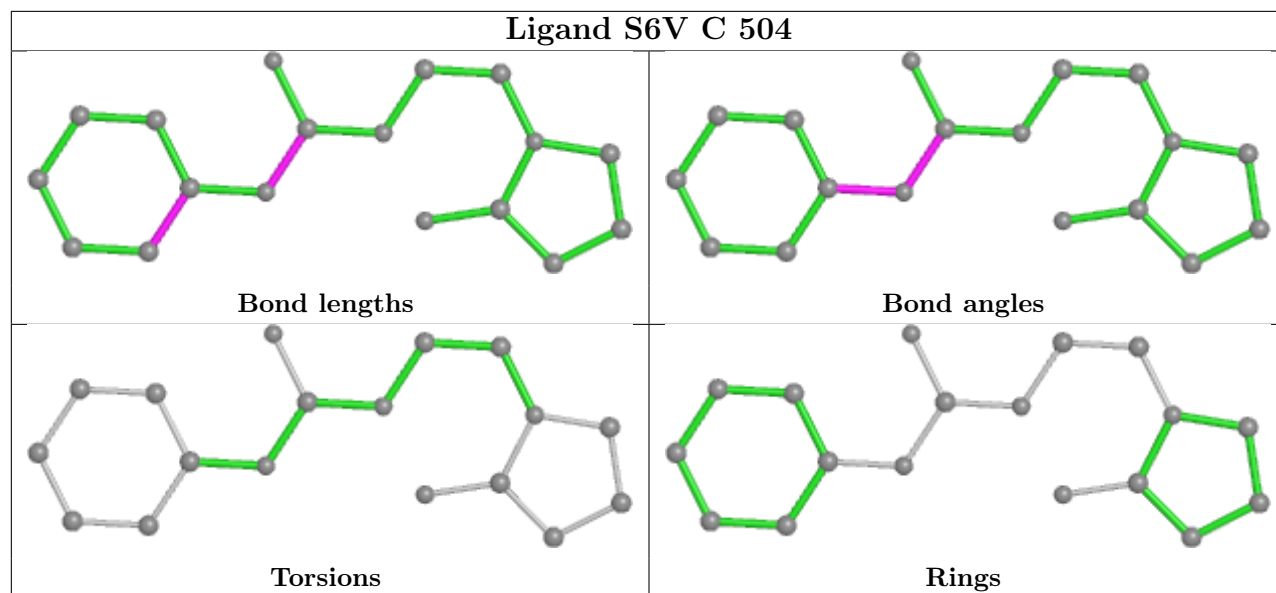
Mol	Chain	Res	Type	Clashes	Symm-Clashes
11	F	401	ACP	6	0
5	C	501	GTP	1	0
9	B	504	MES	2	0
5	A	501	GTP	2	0
8	D	501	GDP	2	0

The following is a two-dimensional graphical depiction of Mogul quality analysis of bond lengths, bond angles, torsion angles, and ring geometry for all instances of the Ligand of Interest. In addition, ligands with molecular weight > 250 and outliers as shown on the validation Tables will also be included. For torsion angles, if less than 5% of the Mogul distribution of torsion angles is within 10 degrees of the torsion angle in question, then that torsion angle is considered an outlier. Any bond that is central to one or more torsion angles identified as an outlier by Mogul will be highlighted in the graph. For rings, the root-mean-square deviation (RMSD) between the ring in question and similar rings identified by Mogul is calculated over all ring torsion angles. If the average RMSD is greater than 60 degrees and the minimal RMSD between the ring in question and any Mogul-identified rings is also greater than 60 degrees, then that ring is considered an outlier. The outliers are highlighted in purple. The color gray indicates Mogul did not find sufficient equivalents in the CSD to analyse the geometry.









## 5.7 Other polymers [i](#)

There are no such residues in this entry.

## 5.8 Polymer linkage issues [i](#)

There are no chain breaks in this entry.



## 6 Fit of model and data

### 6.1 Protein, DNA and RNA chains

In the following table, the column labelled ‘#RSRZ> 2’ contains the number (and percentage) of RSRZ outliers, followed by percent RSRZ outliers for the chain as percentile scores relative to all X-ray entries and entries of similar resolution. The OWAB column contains the minimum, median, 95<sup>th</sup> percentile and maximum values of the occupancy-weighted average B-factor per residue. The column labelled ‘Q< 0.9’ lists the number of (and percentage) of residues with an average occupancy less than 0.9.

Mol	Chain	Analysed	<RSRZ>	#RSRZ>2	OWAB(Å <sup>2</sup> )	Q<0.9
1	A	438/451 (97%)	0.26	7 (1%) 72 69	62, 80, 122, 226	0
1	C	440/451 (97%)	0.27	5 (1%) 80 78	50, 64, 90, 128	0
2	B	425/445 (95%)	0.44	9 (2%) 63 60	52, 77, 128, 169	3 (0%)
2	D	429/445 (96%)	0.27	13 (3%) 50 48	61, 88, 125, 192	4 (0%)
3	E	123/143 (86%)	0.65	9 (7%) 15 13	64, 90, 138, 172	0
4	F	352/384 (91%)	0.58	43 (12%) 4 3	81, 120, 184, 217	0
All	All	2207/2319 (95%)	0.37	86 (3%) 39 37	50, 83, 145, 226	7 (0%)

All (86) RSRZ outliers are listed below:

Mol	Chain	Res	Type	RSRZ
4	F	142	ARG	8.0
1	A	179	THR	7.9
4	F	173	ILE	6.7
4	F	169	LEU	6.4
4	F	105	LEU	6.2
2	D	1	MET	5.7
4	F	240	LEU	5.2
3	E	6	MET	4.8
3	E	27	PRO	4.6
4	F	103	THR	4.0
4	F	140	GLU	4.0
4	F	134	ALA	3.9
2	D	279	GLY	3.9
3	E	50	ILE	3.9
4	F	101	TYR	3.7
2	B	57	THR	3.5
4	F	362	ALA	3.5
4	F	177	GLY	3.4
2	D	248	LEU	3.4

*Continued on next page...*

*Continued from previous page...*

<b>Mol</b>	<b>Chain</b>	<b>Res</b>	<b>Type</b>	<b>RSRZ</b>
3	E	25	LYS	3.4
2	D	285	ALA	3.3
4	F	152	SER	3.3
4	F	314	LEU	3.2
4	F	100	ILE	3.2
4	F	131	PHE	3.2
2	B	59	ASN	3.2
2	D	277	SER	3.2
3	E	24	LEU	3.2
4	F	143	GLU	3.1
4	F	259	GLY	3.1
4	F	181	VAL	3.1
4	F	371	PRO	3.0
2	D	276	THR	3.0
4	F	320	MET	3.0
2	D	280	SER	3.0
2	D	215	ARG	2.8
2	B	86	ILE	2.8
4	F	21	LEU	2.8
1	C	357	TYR	2.8
4	F	99	VAL	2.7
2	B	318	ILE	2.7
2	D	278	ARG	2.7
1	A	332	ILE	2.6
4	F	130	VAL	2.6
2	B	247	GLN	2.6
1	A	335	ILE	2.5
2	B	1	MET	2.5
1	A	351	PHE	2.5
4	F	283	ILE	2.5
4	F	179	VAL	2.4
4	F	6	VAL	2.4
4	F	13	VAL	2.4
1	A	262	TYR	2.4
4	F	98	TYR	2.4
4	F	243	HIS	2.4
2	B	122	VAL	2.4
4	F	39	LEU	2.4
1	C	286	LEU	2.4
1	A	86	LEU	2.3
1	C	285	GLN	2.3
2	B	286	LEU	2.3

*Continued on next page...*

*Continued from previous page...*

Mol	Chain	Res	Type	RSRZ
4	F	206	LEU	2.3
2	D	318	ILE	2.3
4	F	220	VAL	2.3
4	F	199	PHE	2.2
4	F	372	THR	2.2
4	F	170	LEU	2.2
4	F	139	ARG	2.2
3	E	28	SER	2.2
4	F	264	PHE	2.2
4	F	20	LEU	2.2
3	E	122	ARG	2.2
2	B	358	ILE	2.1
4	F	125	THR	2.1
3	E	124	GLN	2.1
2	D	272	PHE	2.1
1	A	196	GLU	2.1
1	C	335	ILE	2.1
2	D	372	LYS	2.1
1	C	368	LEU	2.0
4	F	190	LEU	2.0
2	D	293	GLN	2.0
4	F	178	GLN	2.0
4	F	182	ILE	2.0
3	E	26	PRO	2.0
4	F	246	GLN	2.0

## 6.2 Non-standard residues in protein, DNA, RNA chains [i](#)

There are no non-standard protein/DNA/RNA residues in this entry.

## 6.3 Carbohydrates [i](#)

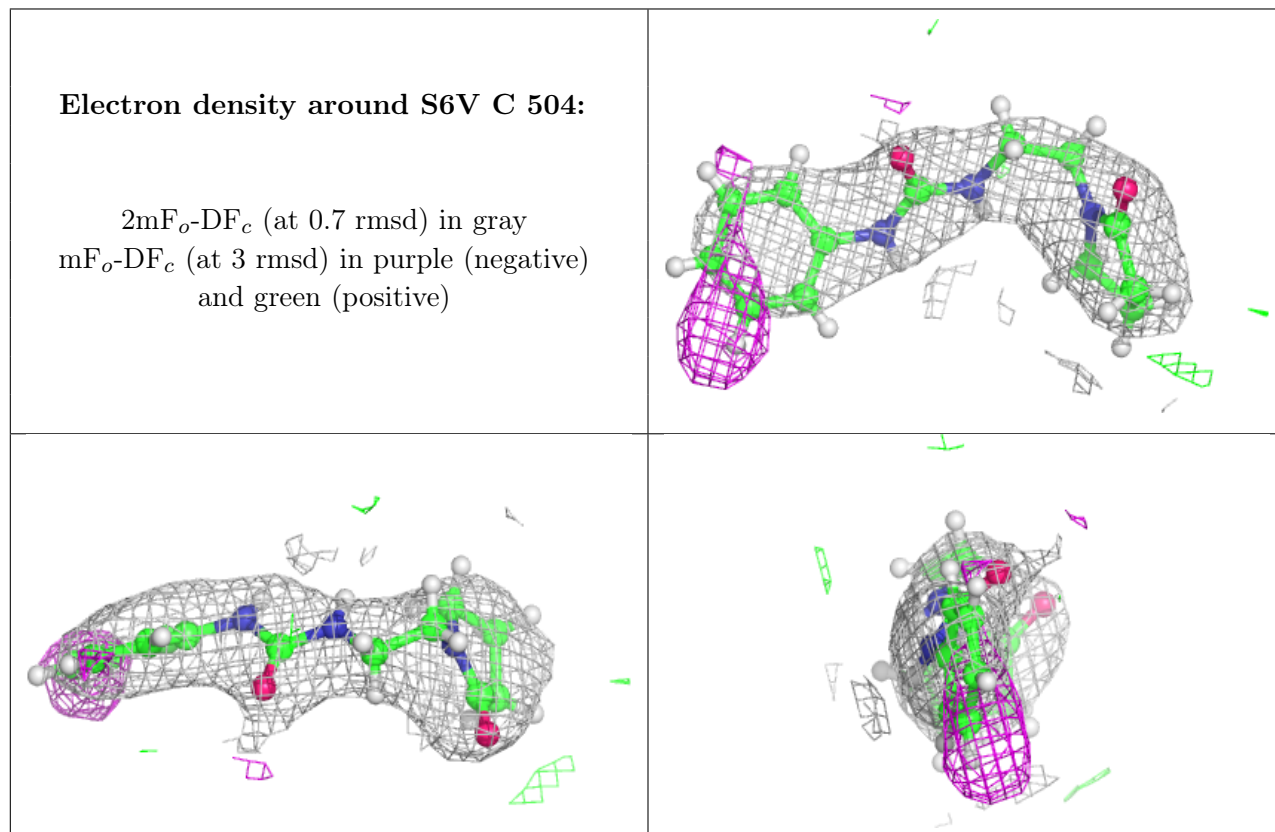
There are no monosaccharides in this entry.

## 6.4 Ligands [i](#)

In the following table, the Atoms column lists the number of modelled atoms in the group and the number defined in the chemical component dictionary. The B-factors column lists the minimum, median, 95<sup>th</sup> percentile and maximum values of B factors of atoms in the group. The column labelled 'Q< 0.9' lists the number of atoms with occupancy less than 0.9.

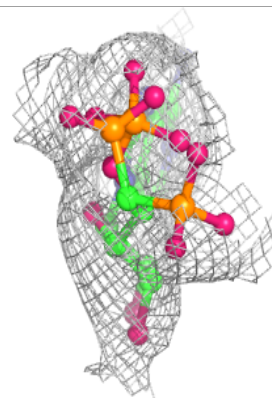
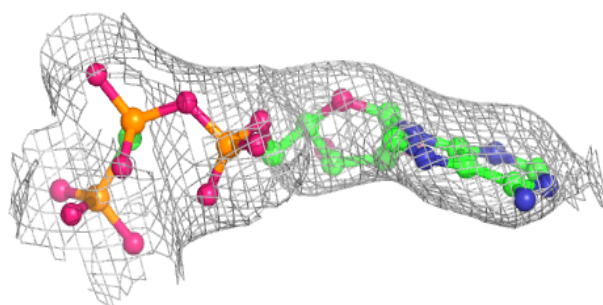
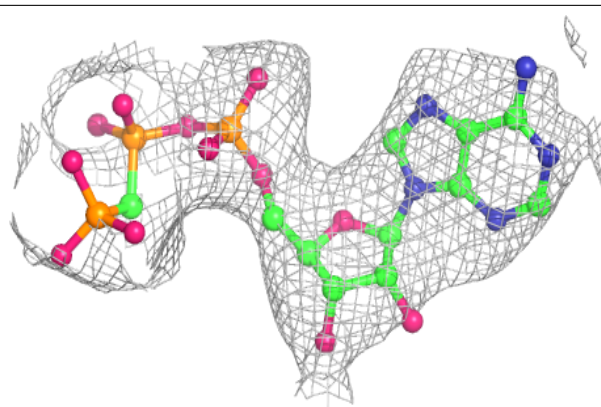
Mol	Type	Chain	Res	Atoms	RSCC	RSR	B-factors( $\text{\AA}^2$ )	Q<0.9
7	CA	B	503	1/1	0.56	0.21	120,120,120,120	0
7	CA	E	201	1/1	0.80	0.07	98,98,98,98	0
6	MG	F	402	1/1	0.81	0.13	114,114,114,114	0
10	S6V	C	504	18/18	0.89	0.28	56,67,81,83	35
11	ACP	F	401	31/31	0.89	0.13	117,124,130,130	0
9	MES	B	504	12/12	0.92	0.20	94,104,117,127	0
6	MG	C	502	1/1	0.95	0.08	59,59,59,59	0
7	CA	C	503	1/1	0.96	0.14	79,79,79,79	0
6	MG	A	502	1/1	0.96	0.13	68,68,68,68	0
8	GDP	D	501	28/28	0.96	0.17	82,87,95,97	0
7	CA	A	503	1/1	0.97	0.17	111,111,111,111	0
5	GTP	A	501	32/32	0.97	0.17	61,66,70,75	0
6	MG	D	502	1/1	0.97	0.23	86,86,86,86	0
6	MG	B	502	1/1	0.97	0.23	48,48,48,48	0
5	GTP	C	501	32/32	0.98	0.18	51,56,59,64	0
8	GDP	B	501	28/28	0.98	0.15	49,56,62,66	0

The following is a graphical depiction of the model fit to experimental electron density of all instances of the Ligand of Interest. In addition, ligands with molecular weight > 250 and outliers as shown on the geometry validation Tables will also be included. Each fit is shown from different orientation to approximate a three-dimensional view.

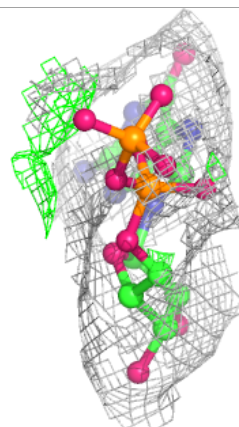
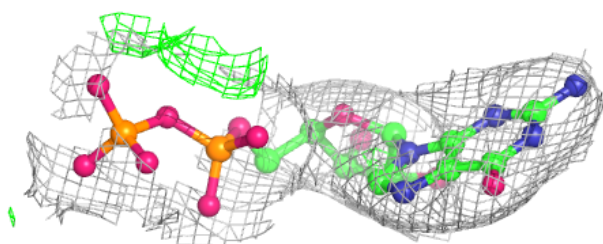
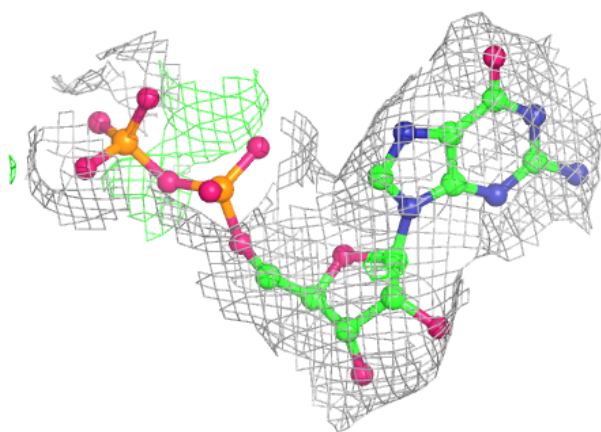


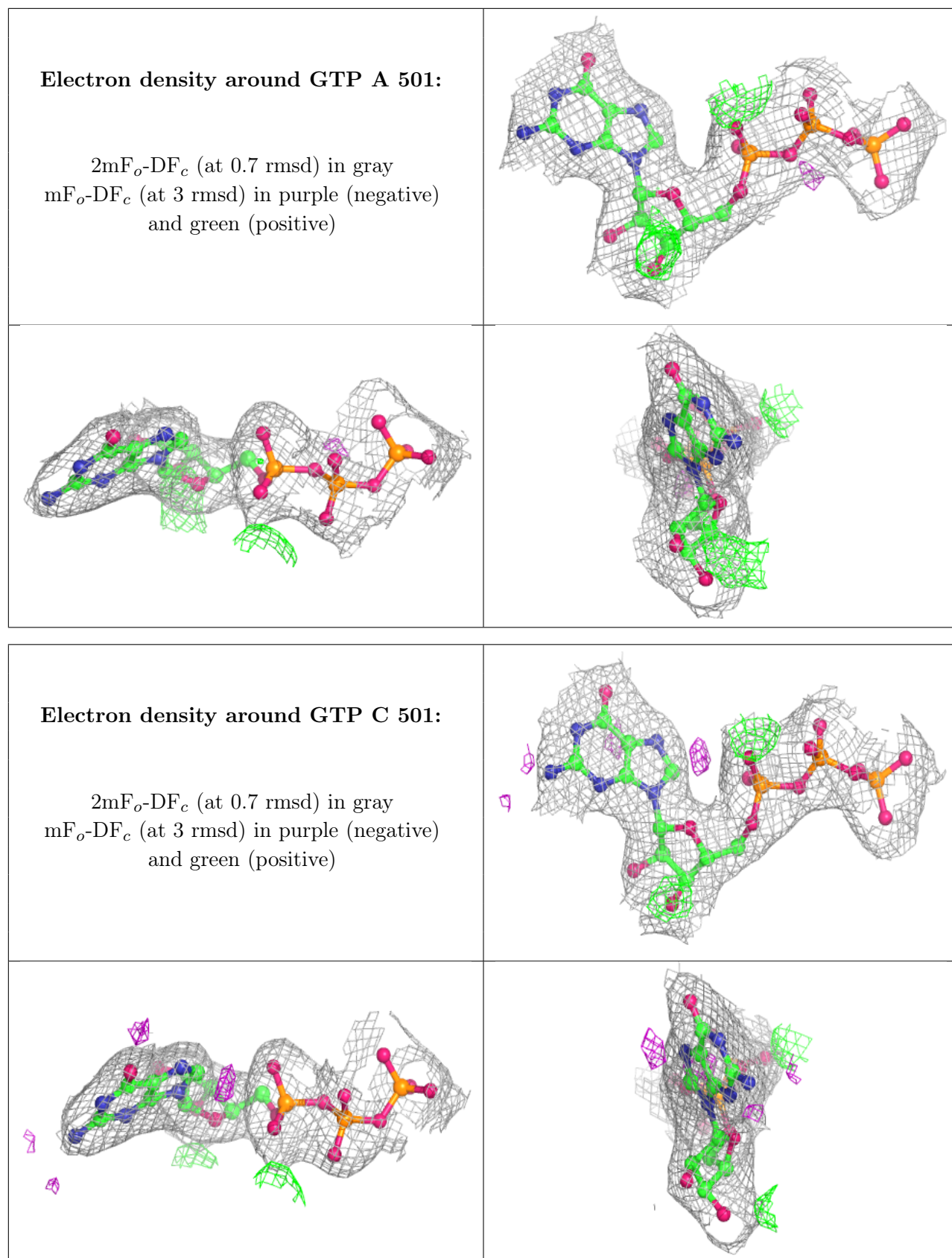
**Electron density around ACP F 401:**

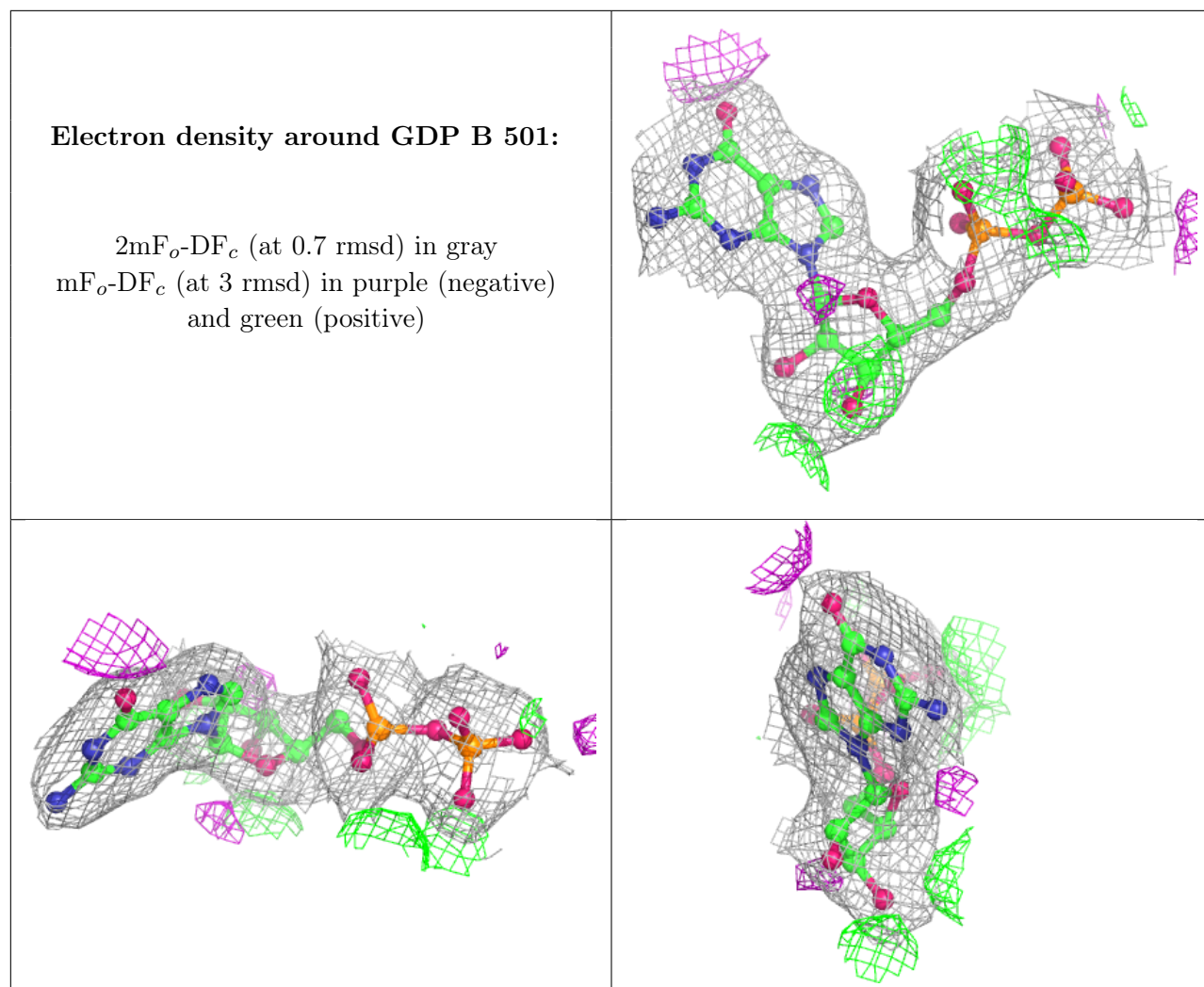
$2mF_o-DF_c$  (at 0.7 rmsd) in gray  
 $mF_o-DF_c$  (at 3 rmsd) in purple (negative)  
and green (positive)

**Electron density around GDP D 501:**

$2mF_o-DF_c$  (at 0.7 rmsd) in gray  
 $mF_o-DF_c$  (at 3 rmsd) in purple (negative)  
and green (positive)







## 6.5 Other polymers [\(i\)](#)

There are no such residues in this entry.