



Full wwPDB X-ray Structure Validation Report ⓘ

Aug 22, 2020 – 12:27 PM BST

PDB ID : 6S50
Title : scdSav(SARK)mv2 - Engineering Single-Chain Dimeric Streptavidin as Host for Artificial Metalloenzymes
Authors : Rebelein, J.G.
Deposited on : 2019-06-29
Resolution : 2.00 Å(reported)

This is a Full wwPDB X-ray Structure Validation Report for a publicly released PDB entry.

We welcome your comments at validation@mail.wwpdb.org

A user guide is available at

<https://www.wwpdb.org/validation/2017/XrayValidationReportHelp>

with specific help available everywhere you see the ⓘ symbol.

The following versions of software and data (see [references ⓘ](#)) were used in the production of this report:

MolProbity : 4.02b-467
Mogul : 1.8.5 (274361), CSD as541be (2020)
Xtriage (Phenix) : 1.13
EDS : 2.13.1
buster-report : 1.1.7 (2018)
Percentile statistics : 20191225.v01 (using entries in the PDB archive December 25th 2019)
Refmac : 5.8.0158
CCP4 : 7.0.044 (Gargrove)
Ideal geometry (proteins) : Engh & Huber (2001)
Ideal geometry (DNA, RNA) : Parkinson et al. (1996)
Validation Pipeline (wwPDB-VP) : 2.13.1

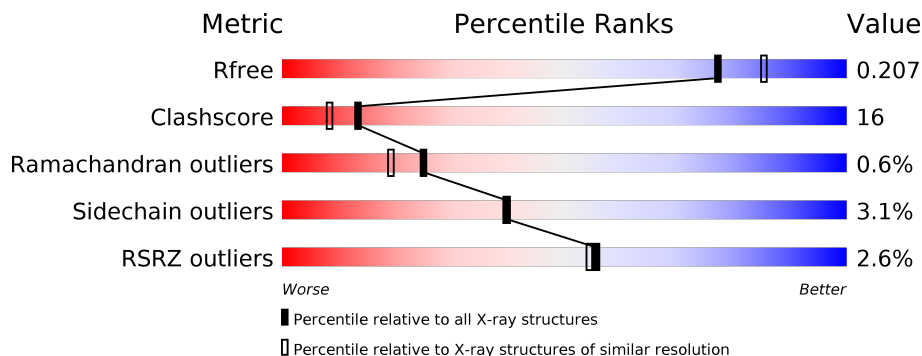
1 Overall quality at a glance

The following experimental techniques were used to determine the structure:

X-RAY DIFFRACTION

The reported resolution of this entry is 2.00 Å.

Percentile scores (ranging between 0-100) for global validation metrics of the entry are shown in the following graphic. The table shows the number of entries on which the scores are based.



Metric	Whole archive (#Entries)	Similar resolution (#Entries, resolution range(Å))
R_{free}	130704	8085 (2.00-2.00)
Clashscore	141614	9178 (2.00-2.00)
Ramachandran outliers	138981	9054 (2.00-2.00)
Sidechain outliers	138945	9053 (2.00-2.00)
RSRZ outliers	127900	7900 (2.00-2.00)

The table below summarises the geometric issues observed across the polymeric chains and their fit to the electron density. The red, orange, yellow and green segments on the lower bar indicate the fraction of residues that contain outliers for ≥ 3 , 2, 1 and 0 types of geometric quality criteria respectively. A grey segment represents the fraction of residues that are not modelled. The numeric value for each fraction is indicated below the corresponding segment, with a dot representing fractions $\leq 5\%$. The upper red bar (where present) indicates the fraction of residues that have poor fit to the electron density. The numeric value is given above the bar.

Mol	Chain	Length	Quality of chain
1	A	343	 % 63% 9% 28%
1	B	343	 3% 58% 13% 28%

The following table lists non-polymeric compounds, carbohydrate monomers and non-standard residues in protein, DNA, RNA chains that are outliers for geometric or electron-density-fit criteria:

Mol	Type	Chain	Res	Chirality	Geometry	Clashes	Electron density
2	4IR	A	402	-	-	X	-
2	4IR	B	402	-	-	X	-

2 Entry composition i

There are 5 unique types of molecules in this entry. The entry contains 4074 atoms, of which 24 are hydrogens and 0 are deuteriums.

In the tables below, the ZeroOcc column contains the number of atoms modelled with zero occupancy, the AltConf column contains the number of residues with at least one atom in alternate conformation and the Trace column contains the number of residues modelled with at most 2 atoms.

- Molecule 1 is a protein called Streptavidin.

Mol	Chain	Residues	Atoms					ZeroOcc	AltConf	Trace
			Total	C	N	O	S			
1	A	248	1862	1160	325	376	1	0	4	0
1	B	246	1854	1155	326	372	1	0	4	0

There are 124 discrepancies between the modelled and reference sequences:

Chain	Residue	Modelled	Actual	Comment	Reference
A	1	MET	-	initiating methionine	UNP P22629
A	2	ALA	-	expression tag	UNP P22629
A	3	SER	-	expression tag	UNP P22629
A	4	MET	-	expression tag	UNP P22629
A	5	THR	-	expression tag	UNP P22629
A	6	GLY	-	expression tag	UNP P22629
A	7	GLY	-	expression tag	UNP P22629
A	8	GLN	-	expression tag	UNP P22629
A	9	GLN	-	expression tag	UNP P22629
A	10	MET	-	expression tag	UNP P22629
A	11	GLY	-	expression tag	UNP P22629
A	12	ARG	-	expression tag	UNP P22629
A	13	ASP	-	expression tag	UNP P22629
A	14	GLN	-	expression tag	UNP P22629
A	121	ALA	LYS	conflict	UNP P22629
A	160	GLY	-	linker	UNP P22629
A	161	SER	-	linker	UNP P22629
A	162	GLY	-	linker	UNP P22629
A	163	GLY	-	linker	UNP P22629
A	164	GLY	-	linker	UNP P22629
A	165	ASN	-	linker	UNP P22629
A	166	GLY	-	linker	UNP P22629
A	167	GLY	-	linker	UNP P22629
A	168	GLY	-	linker	UNP P22629
A	169	ASN	-	linker	UNP P22629

Continued on next page...

Continued from previous page...

Chain	Residue	Modelled	Actual	Comment	Reference
A	170	GLY	-	linker	UNP P22629
A	171	GLY	-	linker	UNP P22629
A	172	GLY	-	linker	UNP P22629
A	173	ASN	-	linker	UNP P22629
A	174	GLY	-	linker	UNP P22629
A	175	GLY	-	linker	UNP P22629
A	176	GLY	-	linker	UNP P22629
A	177	ASN	-	linker	UNP P22629
A	178	ILE	-	linker	UNP P22629
A	179	ASP	-	linker	UNP P22629
A	180	GLY	-	linker	UNP P22629
A	181	ARG	-	linker	UNP P22629
A	182	GLY	-	linker	UNP P22629
A	183	GLY	-	linker	UNP P22629
A	184	GLY	-	linker	UNP P22629
A	185	ASN	-	linker	UNP P22629
A	186	ALA	-	linker	UNP P22629
A	187	SER	-	linker	UNP P22629
A	188	MET	-	linker	UNP P22629
A	189	THR	-	linker	UNP P22629
A	190	GLY	-	linker	UNP P22629
A	191	GLY	-	linker	UNP P22629
A	192	GLN	-	linker	UNP P22629
A	193	GLN	-	linker	UNP P22629
A	194	MET	-	linker	UNP P22629
A	195	GLY	-	linker	UNP P22629
A	196	ARG	-	linker	UNP P22629
A	197	ASP	-	linker	UNP P22629
A	198	GLN	-	linker	UNP P22629
A	207	ALA	ASN	conflict	UNP P22629
A	211	ASP	SER	conflict	UNP P22629
A	228	VAL	GLU	conflict	UNP P22629
A	229	THR	SER	conflict	UNP P22629
A	231	ARG	VAL	conflict	UNP P22629
A	296	ARG	SER	conflict	UNP P22629
A	311	CYS	HIS	conflict	UNP P22629
A	312	ALA	ASP	conflict	UNP P22629
B	1	MET	-	initiating methionine	UNP P22629
B	2	ALA	-	expression tag	UNP P22629
B	3	SER	-	expression tag	UNP P22629
B	4	MET	-	expression tag	UNP P22629
B	5	THR	-	expression tag	UNP P22629

Continued on next page...

Continued from previous page...

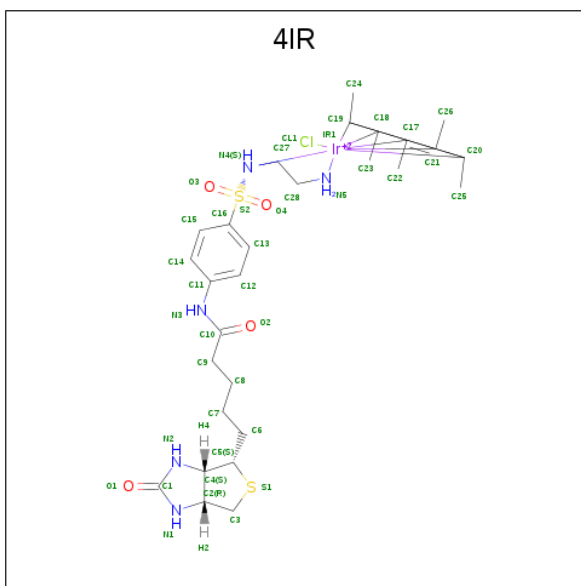
Chain	Residue	Modelled	Actual	Comment	Reference
B	6	GLY	-	expression tag	UNP P22629
B	7	GLY	-	expression tag	UNP P22629
B	8	GLN	-	expression tag	UNP P22629
B	9	GLN	-	expression tag	UNP P22629
B	10	MET	-	expression tag	UNP P22629
B	11	GLY	-	expression tag	UNP P22629
B	12	ARG	-	expression tag	UNP P22629
B	13	ASP	-	expression tag	UNP P22629
B	14	GLN	-	expression tag	UNP P22629
B	121	ALA	LYS	conflict	UNP P22629
B	160	GLY	-	linker	UNP P22629
B	161	SER	-	linker	UNP P22629
B	162	GLY	-	linker	UNP P22629
B	163	GLY	-	linker	UNP P22629
B	164	GLY	-	linker	UNP P22629
B	165	ASN	-	linker	UNP P22629
B	166	GLY	-	linker	UNP P22629
B	167	GLY	-	linker	UNP P22629
B	168	GLY	-	linker	UNP P22629
B	169	ASN	-	linker	UNP P22629
B	170	GLY	-	linker	UNP P22629
B	171	GLY	-	linker	UNP P22629
B	172	GLY	-	linker	UNP P22629
B	173	ASN	-	linker	UNP P22629
B	174	GLY	-	linker	UNP P22629
B	175	GLY	-	linker	UNP P22629
B	176	GLY	-	linker	UNP P22629
B	177	ASN	-	linker	UNP P22629
B	178	ILE	-	linker	UNP P22629
B	179	ASP	-	linker	UNP P22629
B	180	GLY	-	linker	UNP P22629
B	181	ARG	-	linker	UNP P22629
B	182	GLY	-	linker	UNP P22629
B	183	GLY	-	linker	UNP P22629
B	184	GLY	-	linker	UNP P22629
B	185	ASN	-	linker	UNP P22629
B	186	ALA	-	linker	UNP P22629
B	187	SER	-	linker	UNP P22629
B	188	MET	-	linker	UNP P22629
B	189	THR	-	linker	UNP P22629
B	190	GLY	-	linker	UNP P22629
B	191	GLY	-	linker	UNP P22629

Continued on next page...

Continued from previous page...

Chain	Residue	Modelled	Actual	Comment	Reference
B	192	GLN	-	linker	UNP P22629
B	193	GLN	-	linker	UNP P22629
B	194	MET	-	linker	UNP P22629
B	195	GLY	-	linker	UNP P22629
B	196	ARG	-	linker	UNP P22629
B	197	ASP	-	linker	UNP P22629
B	198	GLN	-	linker	UNP P22629
B	207	ALA	ASN	conflict	UNP P22629
B	211	ASP	SER	conflict	UNP P22629
B	228	VAL	GLU	conflict	UNP P22629
B	229	THR	SER	conflict	UNP P22629
B	231	ARG	VAL	conflict	UNP P22629
B	296	ARG	SER	conflict	UNP P22629
B	311	CYS	HIS	conflict	UNP P22629
B	312	ALA	ASP	conflict	UNP P22629

- Molecule 2 is {N-(4-{{2-(amino-kappaN)ethyl}sulfamoyl-kappaN}phenyl)-5-[(3aS,4S,6aR)-2-oxohexahydro-1H-thieno[3,4-d]imidazol-4-yl]pentanamide}(chloro)[(1,2,3,4,5-eta)-1,2,3,4,5-pentamethylcyclopentadienyl]iridium(III) (three-letter code: 4IR) (formula: C₂₈H₄₅ClIrN₅O₄S₂).



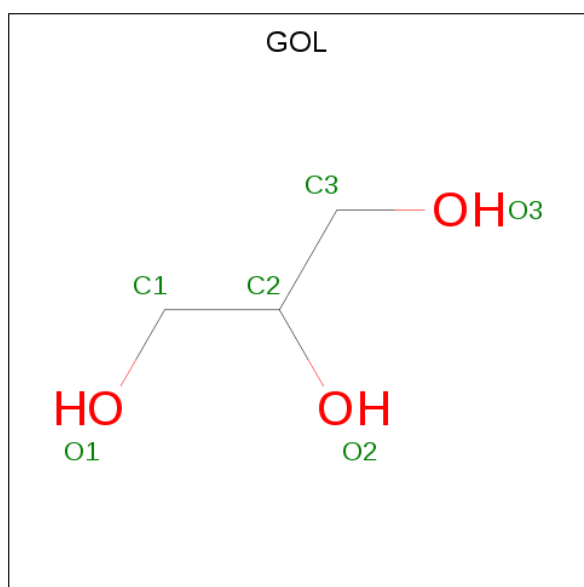
Mol	Chain	Residues	Atoms						ZeroOcc	AltConf	
			Total	C	Cl	Ir	N	O			S
2	A	1	Total	C	Cl	Ir	N	O	S	0	0
			41	28	1	1	5	4	2		
2	A	1	Total	C	Cl	Ir	N	O	S	0	0
			41	28	1	1	5	4	2		

Continued on next page...

Continued from previous page...

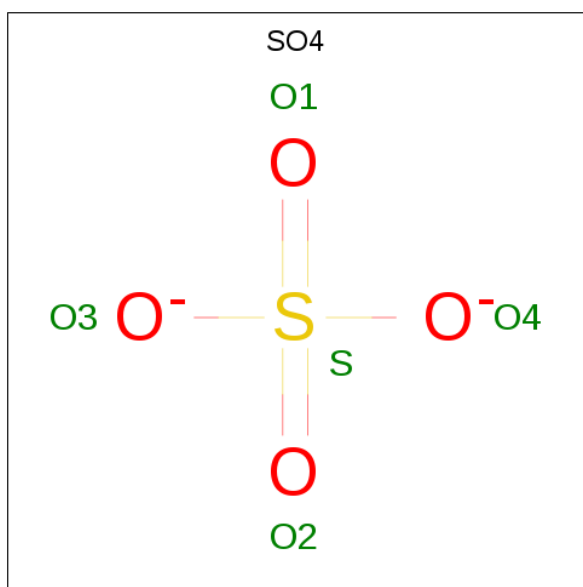
Mol	Chain	Residues	Atoms						ZeroOcc	AltConf	
			Total	C	Cl	Ir	N	O			S
2	B	1	Total 41	C 28	Cl 1	Ir 1	N 5	O 4	S 2	0	0
2	B	1	Total 41	C 28	Cl 1	Ir 1	N 5	O 4	S 2	0	0

- Molecule 3 is GLYCEROL (three-letter code: GOL) (formula: C₃H₈O₃).



Mol	Chain	Residues	Atoms				ZeroOcc	AltConf
			Total	C	H	O		
3	A	1	Total 6	C 3	O 3	0	0	
3	A	1	Total 14	C 3	H 8	O 3	0	0
3	A	1	Total 14	C 3	H 8	O 3	0	0
3	B	1	Total 6	C 3	O 3	0	0	
3	B	1	Total 6	C 3	O 3	0	0	
3	B	1	Total 14	C 3	H 8	O 3	0	0

- Molecule 4 is SULFATE ION (three-letter code: SO4) (formula: O₄S).



Mol	Chain	Residues	Atoms			ZeroOcc	AltConf
4	A	1	Total	O	S	0	0
			5	4	1		

- Molecule 5 is water.

Mol	Chain	Residues	Atoms		ZeroOcc	AltConf
5	A	67	Total	O	0	0
			67	67		
5	B	62	Total	O	0	0
			62	62		

4 Data and refinement statistics

Property	Value	Source
Space group	C 1 2 1	Depositor
Cell constants a, b, c, α , β , γ	183.88Å 57.77Å 57.65Å 90.00° 108.33° 90.00°	Depositor
Resolution (Å)	40.99 – 2.00 43.64 – 1.69	Depositor EDS
% Data completeness (in resolution range)	93.5 (40.99-2.00) 71.5 (43.64-1.69)	Depositor EDS
R_{merge}	0.07	Depositor
R_{sym}	(Not available)	Depositor
$\langle I/\sigma(I) \rangle$ ¹	0.07 (at 1.69Å)	Xtrriage
Refinement program	PHENIX (1.14_3260: ???)	Depositor
R, R_{free}	0.185 , 0.208 0.185 , 0.207	Depositor DCC
R_{free} test set	1861 reflections (3.52%)	wwPDB-VP
Wilson B-factor (Å ²)	25.6	Xtrriage
Anisotropy	0.284	Xtrriage
Bulk solvent k_{sol} (e/Å ³), B_{sol} (Å ²)	0.34 , 37.8	EDS
L-test for twinning ²	$\langle L \rangle = 0.49$, $\langle L^2 \rangle = 0.33$	Xtrriage
Estimated twinning fraction	0.436 for -h+k-l,-l,-k 0.429 for -h-k-l,l,k 0.458 for -h-2*l,-k,l	Xtrriage
F_o, F_c correlation	0.96	EDS
Total number of atoms	4074	wwPDB-VP
Average B, all atoms (Å ²)	38.0	wwPDB-VP

Xtrriage's analysis on translational NCS is as follows: *The largest off-origin peak in the Patterson function is 10.15% of the height of the origin peak. No significant pseudotranslation is detected.*

¹Intensities estimated from amplitudes.

²Theoretical values of $\langle |L| \rangle$, $\langle L^2 \rangle$ for acentric reflections are 0.5, 0.333 respectively for untwinned datasets, and 0.375, 0.2 for perfectly twinned datasets.

5 Model quality [i](#)

5.1 Standard geometry [i](#)

Bond lengths and bond angles in the following residue types are not validated in this section: GOL, SO4, 4IR

The Z score for a bond length (or angle) is the number of standard deviations the observed value is removed from the expected value. A bond length (or angle) with $|Z| > 5$ is considered an outlier worth inspection. RMSZ is the root-mean-square of all Z scores of the bond lengths (or angles).

Mol	Chain	Bond lengths		Bond angles	
		RMSZ	# Z >5	RMSZ	# Z >5
1	A	0.72	0/1920	0.78	0/2630
1	B	0.72	0/1910	0.78	0/2614
All	All	0.72	0/3830	0.78	0/5244

There are no bond length outliers.

There are no bond angle outliers.

There are no chirality outliers.

There are no planarity outliers.

5.2 Too-close contacts [i](#)

In the following table, the Non-H and H(model) columns list the number of non-hydrogen atoms and hydrogen atoms in the chain respectively. The H(added) column lists the number of hydrogen atoms added and optimized by MolProbity. The Clashes column lists the number of clashes within the asymmetric unit, whereas Symm-Clashes lists symmetry related clashes.

Mol	Chain	Non-H	H(model)	H(added)	Clashes	Symm-Clashes
1	A	1862	0	1748	40	0
1	B	1854	0	1746	48	0
2	A	82	0	48	32	0
2	B	82	0	48	34	0
3	A	18	16	24	1	0
3	B	18	8	24	1	0
4	A	5	0	0	0	0
5	A	67	0	0	1	0
5	B	62	0	0	1	0
All	All	4050	24	3638	122	0

The all-atom clashscore is defined as the number of clashes found per 1000 atoms (including

hydrogen atoms). The all-atom clashscore for this structure is 16.

All (122) close contacts within the same asymmetric unit are listed below, sorted by their clash magnitude.

Atom-1	Atom-2	Interatomic distance (Å)	Clash overlap (Å)
1:B:21:TRP:CZ2	1:B:132:LYS:HE3	1.82	1.13
2:B:402:4IR:H28A	2:B:402:4IR:H13	1.31	1.06
1:B:211:ASP:HB2	1:B:228:VAL:O	1.60	1.01
2:A:402:4IR:C26	2:A:402:4IR:CL1	2.48	0.98
1:A:211:ASP:HB2	1:A:228:VAL:O	1.64	0.98
2:B:401:4IR:CL1	2:B:401:4IR:C26	2.49	0.96
1:B:296:ARG:HD3	2:B:402:4IR:H28A	1.48	0.95
1:B:21:TRP:CZ2	1:B:132:LYS:CE	2.50	0.95
1:B:21:TRP:CE2	1:B:132:LYS:HE2	2.01	0.95
1:A:211:ASP:HB3	1:A:230:ALA:H	1.29	0.94
2:B:402:4IR:CL1	2:B:402:4IR:H28	2.05	0.94
1:B:197:ASP:HB2	1:B:217:ALA:O	1.72	0.90
2:B:402:4IR:C28	2:B:402:4IR:H13	2.05	0.86
1:B:21:TRP:CE2	1:B:132:LYS:CE	2.61	0.84
2:B:402:4IR:C26	2:B:402:4IR:CL1	2.63	0.83
1:A:211:ASP:HB3	1:A:230:ALA:N	1.94	0.81
1:B:211:ASP:HB3	1:B:230:ALA:H	1.46	0.80
2:A:401:4IR:O4	2:B:402:4IR:C25	2.30	0.79
2:B:402:4IR:O3	2:B:402:4IR:N5	2.17	0.77
2:A:402:4IR:C26	2:B:401:4IR:CL1	2.71	0.76
1:B:211:ASP:HB3	1:B:230:ALA:N	2.00	0.76
2:A:401:4IR:C25	2:B:402:4IR:C24	2.63	0.75
1:B:13:ASP:OD2	1:B:64:PRO:HG3	1.88	0.74
2:A:401:4IR:CL1	2:B:402:4IR:C24	2.74	0.73
1:B:197:ASP:HB3	1:B:219:ALA:N	2.05	0.71
1:B:229:THR:CG2	1:B:234:ALA:HB3	2.21	0.70
2:A:401:4IR:CL1	2:A:401:4IR:C26	2.79	0.68
1:B:21:TRP:CH2	1:B:132:LYS:HE3	2.28	0.67
2:A:402:4IR:C26	2:B:401:4IR:O4	2.43	0.66
2:B:402:4IR:C13	2:B:402:4IR:H27	2.24	0.65
1:A:296:ARG:HG2	2:A:402:4IR:C28	2.26	0.65
1:A:235:GLU:HB2	1:A:268:ARG:CZ	2.27	0.65
1:A:296:ARG:HB3	2:A:402:4IR:H28	1.80	0.64
1:B:229:THR:CG2	1:B:234:ALA:CB	2.77	0.63
1:A:296:ARG:HG2	2:A:402:4IR:C27	2.29	0.62
1:A:229:THR:CG2	1:A:234:ALA:CB	2.77	0.61
2:A:402:4IR:C21	2:B:401:4IR:CL1	2.86	0.60
1:B:296:ARG:HD3	2:B:402:4IR:H13	1.83	0.60

Continued on next page...

Continued from previous page...

Atom-1	Atom-2	Interatomic distance (Å)	Clash overlap (Å)
1:A:296:ARG:CG	2:A:402:4IR:H27A	2.31	0.60
1:A:296:ARG:CB	2:A:402:4IR:H27A	2.32	0.59
2:A:401:4IR:C20	2:B:402:4IR:C24	2.80	0.59
1:A:211:ASP:CB	1:A:229:THR:HA	2.32	0.59
1:B:197:ASP:HB3	1:B:218:GLY:C	2.23	0.58
2:A:401:4IR:C24	2:A:401:4IR:O3	2.52	0.58
1:A:229:THR:HG21	1:A:234:ALA:CB	2.33	0.58
1:B:23:ASN:HB3	1:B:130:PHE:CD2	2.38	0.58
1:B:198:GLN:HG3	1:B:200:GLY:H	1.69	0.58
1:A:23:ASN:HB3	1:A:130:PHE:CD2	2.39	0.57
1:B:211:ASP:CB	1:B:229:THR:HA	2.36	0.56
1:B:229:THR:HG21	1:B:234:ALA:CB	2.36	0.55
5:A:549:HOH:O	1:B:127:HIS:HD2	1.90	0.55
2:A:402:4IR:H13	2:A:402:4IR:C27	2.36	0.55
2:B:402:4IR:C27	2:B:402:4IR:H13	2.37	0.55
2:B:402:4IR:C13	2:B:402:4IR:C27	2.86	0.54
1:A:23:ASN:HB3	1:A:130:PHE:CE2	2.42	0.54
3:A:404:GOL:H2	1:B:127:HIS:CD2	2.43	0.53
1:A:211:ASP:HB2	1:A:229:THR:HA	1.90	0.53
1:A:229:THR:CG2	1:A:234:ALA:HB3	2.38	0.53
1:A:296:ARG:HD3	2:A:402:4IR:C13	2.39	0.53
1:A:271:HIS:HB2	1:A:296:ARG:NH1	2.25	0.52
1:A:227:TYR:OH	2:A:402:4IR:O1	2.20	0.51
1:B:229:THR:HG21	1:B:234:ALA:HB3	1.92	0.51
1:A:229:THR:CG2	1:A:234:ALA:HB1	2.41	0.50
1:B:23:ASN:HB3	1:B:130:PHE:CE2	2.46	0.50
1:A:197:ASP:OD2	1:A:248:PRO:HG3	2.10	0.50
2:B:402:4IR:O2	2:B:402:4IR:H14	2.11	0.50
1:A:198:GLN:HG3	1:A:217:ALA:O	2.12	0.49
1:B:235:GLU:O	1:B:236[B]:SER:HB2	2.12	0.49
1:B:91:THR:HB	1:B:275:THR:HB	1.93	0.49
1:B:211:ASP:HB2	1:B:229:THR:HA	1.95	0.49
1:A:296:ARG:HB2	2:A:402:4IR:H27A	1.94	0.49
1:A:296:ARG:HD3	2:A:402:4IR:C12	2.43	0.48
2:B:401:4IR:H14	2:B:401:4IR:O2	2.13	0.48
2:B:402:4IR:H27	2:B:402:4IR:H13	1.96	0.48
1:A:271:HIS:O	1:A:296:ARG:HD2	2.14	0.48
1:A:51:GLU:HB2	1:A:84:ARG:CZ	2.44	0.48
1:B:112:SER:HB2	2:B:401:4IR:C24	2.44	0.48
1:B:229:THR:HG23	1:B:234:ALA:HB3	1.97	0.47
1:A:296:ARG:HD3	2:A:402:4IR:H13	1.97	0.47

Continued on next page...

Continued from previous page...

Atom-1	Atom-2	Interatomic distance (Å)	Clash overlap (Å)
1:A:296:ARG:CB	2:A:402:4IR:H28	2.45	0.47
1:B:112:SER:CB	2:B:401:4IR:C24	2.92	0.46
1:A:220:ASP:N	1:A:220:ASP:OD1	2.45	0.46
2:A:402:4IR:C25	2:A:402:4IR:O3	2.62	0.46
1:B:116:GLU:H	1:B:116:GLU:CD	2.19	0.46
2:B:402:4IR:C28	2:B:402:4IR:C13	2.88	0.46
1:A:21:TRP:HB3	1:A:130:PHE:HB3	1.98	0.46
2:B:402:4IR:CL1	2:B:402:4IR:H27A	2.53	0.46
1:A:91:THR:HB	1:A:275:THR:HB	1.99	0.44
1:B:21:TRP:NE1	1:B:132:LYS:HE2	2.29	0.44
2:A:402:4IR:H27A	2:A:402:4IR:H13	2.00	0.44
2:A:401:4IR:C21	2:B:402:4IR:C24	2.96	0.44
2:B:401:4IR:CL1	2:B:401:4IR:O3	2.72	0.43
1:B:43:TYR:OH	2:B:401:4IR:O1	2.22	0.43
2:A:402:4IR:C26	2:B:401:4IR:N5	2.81	0.43
1:B:234:ALA:HA	1:B:238:TYR:OH	2.19	0.43
1:B:198:GLN:HG3	1:B:200:GLY:N	2.32	0.43
1:A:229:THR:HG23	1:A:234:ALA:HB3	2.01	0.43
2:A:401:4IR:H14	2:A:401:4IR:O2	2.18	0.43
1:A:229:THR:O	1:A:229:THR:HG23	2.19	0.43
1:B:220:ASP:N	1:B:220:ASP:OD1	2.50	0.43
1:A:14:GLN:HG3	1:A:33:ALA:O	2.19	0.42
1:B:197:ASP:O	1:B:198:GLN:C	2.57	0.42
2:B:401:4IR:C14	2:B:401:4IR:O2	2.64	0.42
2:A:402:4IR:C26	2:B:401:4IR:S2	3.07	0.42
1:B:221:GLY:HA2	1:B:244:TYR:CE1	2.54	0.42
1:B:134:LYS:HA	1:B:135:PRO:HD3	1.89	0.42
1:B:304:TRP:CZ2	1:B:305:LYS:HD3	2.54	0.42
1:B:318:LYS:HE3	1:B:318:LYS:HB3	1.82	0.42
1:A:296:ARG:HG2	2:A:402:4IR:H28	2.00	0.42
1:B:296:ARG:HG3	1:B:297:GLY:N	2.35	0.42
1:A:67:ASP:OD1	1:A:67:ASP:N	2.52	0.42
1:B:227:TYR:OH	2:B:402:4IR:O1	2.22	0.42
1:A:305:LYS:HD2	2:A:402:4IR:C22	2.50	0.41
1:B:235:GLU:O	1:B:236[B]:SER:CB	2.67	0.41
2:A:401:4IR:C26	2:B:402:4IR:C24	2.98	0.41
1:B:36:ASP:N	1:B:36:ASP:OD1	2.50	0.41
1:B:269:ASN:HB2	3:B:404:GOL:H31	2.03	0.41
1:A:235:GLU:O	1:A:236:SER:CB	2.68	0.41
1:A:296:ARG:CG	2:A:402:4IR:C27	2.93	0.41
1:A:304:TRP:CZ2	1:A:305:LYS:HD3	2.56	0.40

Continued on next page...

Continued from previous page...

Atom-1	Atom-2	Interatomic distance (Å)	Clash overlap (Å)
1:B:211:ASP:HA	5:B:524:HOH:O	2.20	0.40
1:B:121:ALA:O	2:B:401:4IR:C23	2.69	0.40

There are no symmetry-related clashes.

5.3 Torsion angles [i](#)

5.3.1 Protein backbone [i](#)

In the following table, the Percentiles column shows the percent Ramachandran outliers of the chain as a percentile score with respect to all X-ray entries followed by that with respect to entries of similar resolution.

The Analysed column shows the number of residues for which the backbone conformation was analysed, and the total number of residues.

Mol	Chain	Analysed	Favoured	Allowed	Outliers	Percentiles	
1	A	248/343 (72%)	238 (96%)	7 (3%)	3 (1%)	13	7
1	B	246/343 (72%)	235 (96%)	10 (4%)	1 (0%)	34	30
All	All	494/686 (72%)	473 (96%)	17 (3%)	4 (1%)	25	13

All (4) Ramachandran outliers are listed below:

Mol	Chain	Res	Type
1	A	236	SER
1	B	198	GLN
1	A	52[A]	SER
1	A	52[B]	SER

5.3.2 Protein sidechains [i](#)

In the following table, the Percentiles column shows the percent sidechain outliers of the chain as a percentile score with respect to all X-ray entries followed by that with respect to entries of similar resolution.

The Analysed column shows the number of residues for which the sidechain conformation was analysed, and the total number of residues.

Continued on next page...

Continued from previous page...

Mol	Chain	Analysed	Rotameric	Outliers	Percentiles	
1	A	185/235 (79%)	182 (98%)	3 (2%)	62	67
1	B	183/235 (78%)	174 (95%)	9 (5%)	25	21
All	All	368/470 (78%)	356 (97%)	12 (3%)	40	37

All (12) residues with a non-rotameric sidechain are listed below:

Mol	Chain	Res	Type
1	A	73	LEU
1	A	257	LEU
1	A	316	LYS
1	B	52	SER
1	B	73	LEU
1	B	231	ARG
1	B	236[A]	SER
1	B	236[B]	SER
1	B	257	LEU
1	B	291	GLN
1	B	316	LYS
1	B	318	LYS

Some sidechains can be flipped to improve hydrogen bonding and reduce clashes. All (2) such sidechains are listed below:

Mol	Chain	Res	Type
1	A	289	ASN
1	B	266	ASN

5.3.3 RNA [i](#)

There are no RNA molecules in this entry.

5.4 Non-standard residues in protein, DNA, RNA chains [i](#)

There are no non-standard protein/DNA/RNA residues in this entry.

5.5 Carbohydrates [i](#)

There are no monosaccharides in this entry.

5.6 Ligand geometry [i](#)

11 ligands are modelled in this entry.

In the following table, the Counts columns list the number of bonds (or angles) for which Mogul statistics could be retrieved, the number of bonds (or angles) that are observed in the model and the number of bonds (or angles) that are defined in the Chemical Component Dictionary. The Link column lists molecule types, if any, to which the group is linked. The Z score for a bond length (or angle) is the number of standard deviations the observed value is removed from the expected value. A bond length (or angle) with $|Z| > 2$ is considered an outlier worth inspection. RMSZ is the root-mean-square of all Z scores of the bond lengths (or angles).

Mol	Type	Chain	Res	Link	Bond lengths			Bond angles		
					Counts	RMSZ	# Z > 2	Counts	RMSZ	# Z > 2
2	4IR	A	402	-	31,49,49	2.31	3 (9%)	43,104,104	2.81	18 (41%)
3	GOL	B	403	-	5,5,5	1.11	0	5,5,5	1.12	0
3	GOL	B	404	-	5,5,5	0.73	0	5,5,5	1.03	0
2	4IR	A	401	2	31,49,49	1.89	2 (6%)	43,104,104	3.24	19 (44%)
3	GOL	A	403	-	5,5,5	0.96	0	5,5,5	1.16	0
3	GOL	A	404	-	5,5,5	0.74	0	5,5,5	0.98	0
4	SO4	A	406	-	4,4,4	0.15	0	6,6,6	0.19	0
2	4IR	B	402	2	31,49,49	2.58	9 (29%)	43,104,104	3.33	19 (44%)
2	4IR	B	401	-	31,49,49	2.21	2 (6%)	43,104,104	2.67	18 (41%)
3	GOL	B	405	-	5,5,5	0.68	0	5,5,5	0.82	0
3	GOL	A	405	-	5,5,5	0.82	0	5,5,5	1.40	1 (20%)

In the following table, the Chirals column lists the number of chiral outliers, the number of chiral centers analysed, the number of these observed in the model and the number defined in the Chemical Component Dictionary. Similar counts are reported in the Torsion and Rings columns. '-' means no outliers of that kind were identified.

Mol	Type	Chain	Res	Link	Chirals	Torsions	Rings
2	4IR	A	402	-	-	9/20/204/204	0/10/9/9
3	GOL	B	403	-	-	4/4/4/4	-
3	GOL	B	404	-	-	4/4/4/4	-
2	4IR	A	401	2	-	5/20/204/204	0/10/9/9
3	GOL	A	403	-	-	4/4/4/4	-
3	GOL	A	404	-	-	2/4/4/4	-

Continued on next page...

Continued from previous page...

Mol	Type	Chain	Res	Link	Chirals	Torsions	Rings
2	4IR	B	402	2	-	9/20/204/204	0/10/9/9
2	4IR	B	401	-	-	6/20/204/204	0/10/9/9
3	GOL	B	405	-	-	2/4/4/4	-
3	GOL	A	405	-	-	4/4/4/4	-

All (16) bond length outliers are listed below:

Mol	Chain	Res	Type	Atoms	Z	Observed(Å)	Ideal(Å)
2	A	402	4IR	C16-S2	-11.28	1.60	1.76
2	B	401	4IR	C16-S2	-10.94	1.61	1.76
2	A	401	4IR	C16-S2	-8.69	1.64	1.76
2	B	402	4IR	C16-S2	-8.54	1.64	1.76
2	B	402	4IR	C5-S1	-6.42	1.72	1.82
2	B	401	4IR	C5-S1	-4.15	1.76	1.82
2	A	402	4IR	C5-S1	-3.82	1.76	1.82
2	A	401	4IR	C5-S1	-3.82	1.76	1.82
2	B	402	4IR	C27-N4	-3.79	1.44	1.48
2	B	402	4IR	O4-S2	-3.77	1.39	1.43
2	B	402	4IR	O3-S2	-3.13	1.40	1.43
2	B	402	4IR	O2-C10	-3.00	1.17	1.23
2	B	402	4IR	C2-N1	-2.89	1.41	1.46
2	B	402	4IR	C13-C12	2.46	1.43	1.38
2	A	402	4IR	C11-N3	-2.09	1.37	1.41
2	B	402	4IR	C1-N2	-2.08	1.31	1.35

All (75) bond angle outliers are listed below:

Mol	Chain	Res	Type	Atoms	Z	Observed(°)	Ideal(°)
2	A	401	4IR	C16-S2-N4	9.68	121.97	107.54
2	B	402	4IR	O4-S2-O3	-8.57	105.63	119.52
2	A	401	4IR	O4-S2-O3	-8.32	106.04	119.52
2	B	402	4IR	C13-C16-S2	8.06	128.24	119.76
2	A	402	4IR	O2-C10-C9	-7.77	107.80	122.02
2	A	401	4IR	C13-C16-S2	7.51	127.67	119.76
2	A	401	4IR	O2-C10-C9	-7.37	108.55	122.02
2	A	402	4IR	C9-C10-N3	-7.28	101.77	114.59
2	B	401	4IR	O2-C10-C9	-6.50	110.12	122.02
2	B	402	4IR	C16-S2-N4	6.08	116.61	107.54
2	A	402	4IR	O2-C10-N3	-6.00	112.69	123.63
2	A	402	4IR	O4-S2-O3	-5.95	109.87	119.52
2	B	402	4IR	C12-C13-C16	5.84	125.49	119.45

Continued on next page...

Continued from previous page...

Mol	Chain	Res	Type	Atoms	Z	Observed(°)	Ideal(°)
2	B	401	4IR	O4-S2-O3	-5.64	110.38	119.52
2	B	402	4IR	C15-C16-C13	-5.48	112.79	120.44
2	B	402	4IR	C27-N4-S2	-5.47	106.90	118.89
2	B	402	4IR	O2-C10-C9	-5.37	112.20	122.02
2	B	401	4IR	C9-C10-N3	-5.10	105.61	114.59
2	B	402	4IR	C9-C10-N3	-4.98	105.82	114.59
2	B	401	4IR	O2-C10-N3	-4.93	114.64	123.63
2	A	402	4IR	C16-S2-N4	4.75	114.61	107.54
2	B	401	4IR	O4-S2-C16	-4.63	102.19	108.05
2	B	402	4IR	C5-C4-N2	-4.52	109.07	113.13
2	A	402	4IR	C3-C2-N1	-4.41	107.43	113.03
2	B	402	4IR	C2-C3-S1	4.39	110.07	106.31
2	B	401	4IR	C16-S2-N4	4.31	113.96	107.54
2	A	401	4IR	O2-C10-N3	-4.22	115.94	123.63
2	B	402	4IR	O2-C10-N3	-4.20	115.97	123.63
2	A	401	4IR	C9-C10-N3	-4.09	107.38	114.59
2	B	401	4IR	C3-C2-C4	-4.09	105.11	108.66
2	B	402	4IR	O3-S2-C16	-3.94	103.06	108.05
2	B	401	4IR	C11-N3-C10	-3.94	120.61	127.50
2	B	401	4IR	C13-C16-S2	3.92	123.89	119.76
2	A	401	4IR	C27-N4-S2	-3.89	110.37	118.89
2	A	401	4IR	C3-C2-N1	-3.80	108.20	113.03
2	B	401	4IR	C5-C4-N2	-3.73	109.79	113.13
2	A	401	4IR	C3-C2-C4	-3.58	105.55	108.66
2	A	401	4IR	C2-C3-S1	3.52	109.33	106.31
2	A	402	4IR	C2-C3-S1	3.31	109.14	106.31
2	B	401	4IR	C2-C3-S1	3.30	109.14	106.31
2	A	402	4IR	C22-C17-C18	3.30	129.55	120.71
2	A	401	4IR	C15-C16-S2	-3.26	116.32	119.76
2	A	401	4IR	C15-C16-C13	-3.23	115.93	120.44
2	B	402	4IR	C14-C15-C16	3.23	122.79	119.45
2	B	402	4IR	C15-C14-C11	3.23	124.03	120.30
2	B	401	4IR	C5-C4-C2	3.08	112.52	108.94
2	A	401	4IR	C5-C4-C2	3.08	112.51	108.94
2	A	402	4IR	C26-C21-C20	3.00	128.75	120.71
2	B	402	4IR	C3-C2-N1	-2.96	109.27	113.03
2	B	402	4IR	C5-C4-C2	2.93	112.34	108.94
2	A	402	4IR	O3-S2-C16	-2.90	104.38	108.05
2	B	401	4IR	C15-C16-S2	-2.89	116.71	119.76
2	A	401	4IR	C12-C13-C16	2.85	122.40	119.45
2	A	402	4IR	C5-C4-C2	2.70	112.07	108.94
2	B	402	4IR	C3-C2-C4	-2.69	106.33	108.66

Continued on next page...

Continued from previous page...

Mol	Chain	Res	Type	Atoms	Z	Observed(°)	Ideal(°)
2	A	402	4IR	C4-N2-C1	-2.65	110.14	112.62
2	A	401	4IR	C14-C15-C16	2.65	122.19	119.45
2	A	402	4IR	C11-N3-C10	-2.63	122.90	127.50
2	A	402	4IR	C7-C6-C5	-2.62	108.55	113.86
2	B	401	4IR	C27-N4-S2	-2.57	113.25	118.89
3	A	405	GOL	C3-C2-C1	-2.55	101.77	111.70
2	A	401	4IR	C11-N3-C10	-2.43	123.24	127.50
2	B	401	4IR	C28-C27-N4	2.43	111.70	107.27
2	B	402	4IR	C7-C6-C5	-2.41	108.96	113.86
2	B	401	4IR	C3-C2-N1	-2.38	110.01	113.03
2	A	401	4IR	C26-C21-C20	2.34	126.98	120.71
2	B	402	4IR	C14-C11-C12	-2.33	115.84	119.03
2	B	401	4IR	C26-C21-C20	2.32	126.92	120.71
2	A	402	4IR	C28-C27-N4	2.29	111.45	107.27
2	A	401	4IR	C5-C4-N2	-2.26	111.10	113.13
2	A	402	4IR	N2-C1-N1	2.22	110.84	108.76
2	A	402	4IR	C12-C13-C16	2.14	121.66	119.45
2	A	402	4IR	C27-C28-N5	2.12	114.25	109.64
2	B	401	4IR	C22-C17-C18	2.10	126.34	120.71
2	A	401	4IR	C22-C17-C18	2.08	126.29	120.71

There are no chirality outliers.

All (49) torsion outliers are listed below:

Mol	Chain	Res	Type	Atoms
3	B	403	GOL	O1-C1-C2-C3
3	B	404	GOL	O1-C1-C2-C3
3	B	404	GOL	C1-C2-C3-O3
2	A	401	4IR	C27-N4-S2-O4
2	A	401	4IR	C27-N4-S2-C16
3	A	403	GOL	O1-C1-C2-C3
3	A	404	GOL	O1-C1-C2-C3
2	B	402	4IR	C27-N4-S2-O3
2	B	402	4IR	C27-N4-S2-C16
2	B	402	4IR	C4-C5-C6-C7
3	A	405	GOL	C1-C2-C3-O3
2	A	401	4IR	O2-C10-N3-C11
2	A	402	4IR	O2-C10-N3-C11
2	B	401	4IR	O2-C10-N3-C11
2	B	402	4IR	O2-C10-N3-C11
3	B	403	GOL	C1-C2-C3-O3
3	A	403	GOL	C1-C2-C3-O3

Continued on next page...

Continued from previous page...

Mol	Chain	Res	Type	Atoms
3	B	405	GOL	C1-C2-C3-O3
3	A	405	GOL	O1-C1-C2-C3
2	A	402	4IR	C7-C8-C9-C10
3	B	403	GOL	O1-C1-C2-O2
3	B	403	GOL	O2-C2-C3-O3
3	B	404	GOL	O1-C1-C2-O2
3	B	404	GOL	O2-C2-C3-O3
3	A	403	GOL	O1-C1-C2-O2
3	A	403	GOL	O2-C2-C3-O3
3	A	404	GOL	O1-C1-C2-O2
3	A	405	GOL	O2-C2-C3-O3
2	A	402	4IR	C15-C16-S2-O3
2	A	402	4IR	C13-C16-S2-O3
2	B	402	4IR	C15-C16-S2-O3
2	B	402	4IR	C13-C16-S2-O3
2	B	401	4IR	C15-C16-S2-O3
2	B	401	4IR	C13-C16-S2-O3
2	A	401	4IR	C15-C16-S2-O3
3	A	405	GOL	O1-C1-C2-O2
2	A	401	4IR	C13-C16-S2-O3
3	B	405	GOL	O2-C2-C3-O3
2	B	402	4IR	S1-C5-C6-C7
2	B	401	4IR	C12-C11-N3-C10
2	A	402	4IR	C13-C16-S2-N4
2	A	402	4IR	C15-C16-S2-N4
2	B	401	4IR	C14-C11-N3-C10
2	A	402	4IR	C12-C11-N3-C10
2	A	402	4IR	C14-C11-N3-C10
2	B	402	4IR	C13-C16-S2-N4
2	B	402	4IR	C15-C16-S2-N4
2	B	401	4IR	C7-C8-C9-C10
2	A	402	4IR	C27-N4-S2-O3

There are no ring outliers.

6 monomers are involved in 57 short contacts:

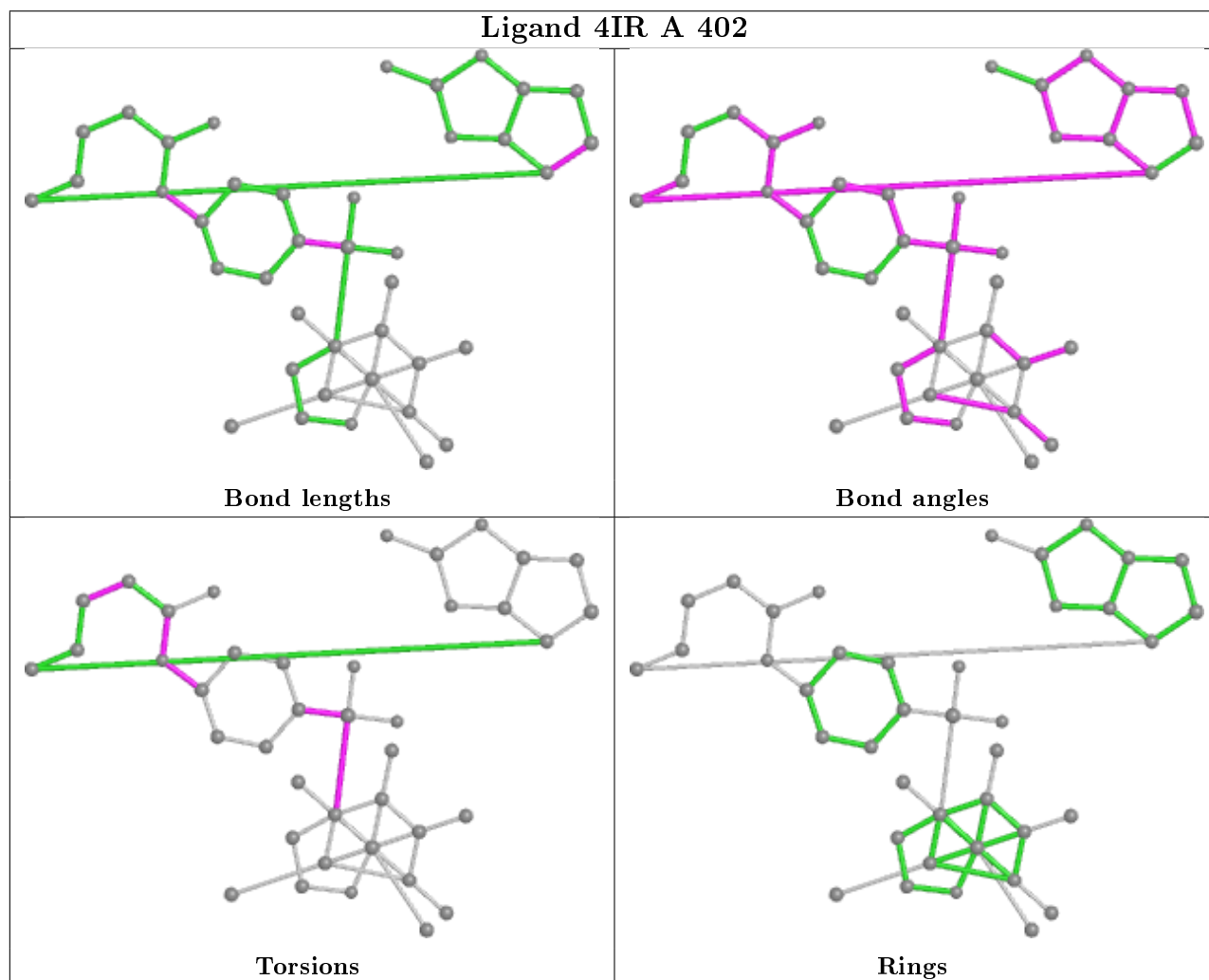
Mol	Chain	Res	Type	Clashes	Symm-Clashes
2	A	402	4IR	23	0
3	B	404	GOL	1	0
2	A	401	4IR	9	0
3	A	404	GOL	1	0
2	B	402	4IR	21	0

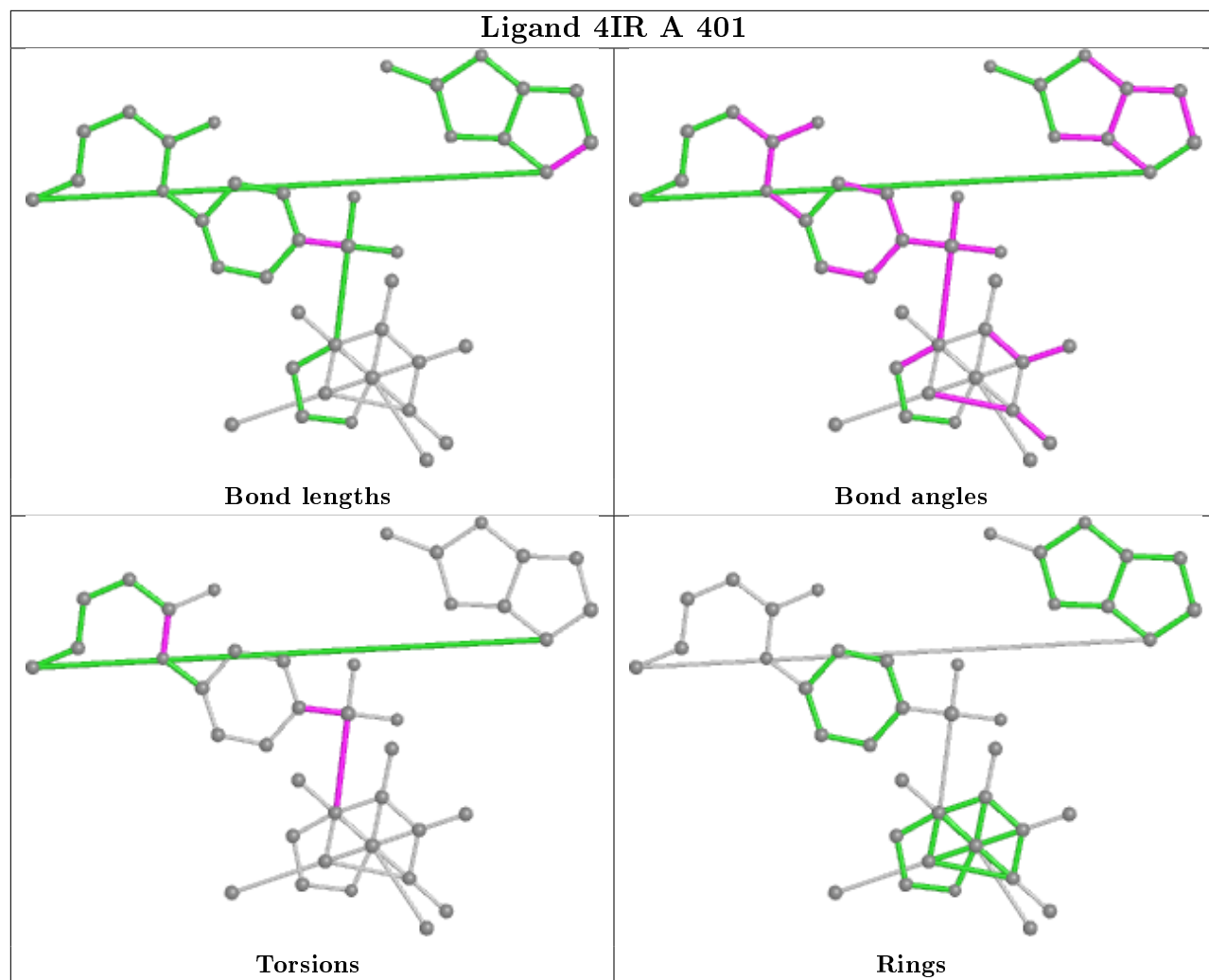
Continued on next page...

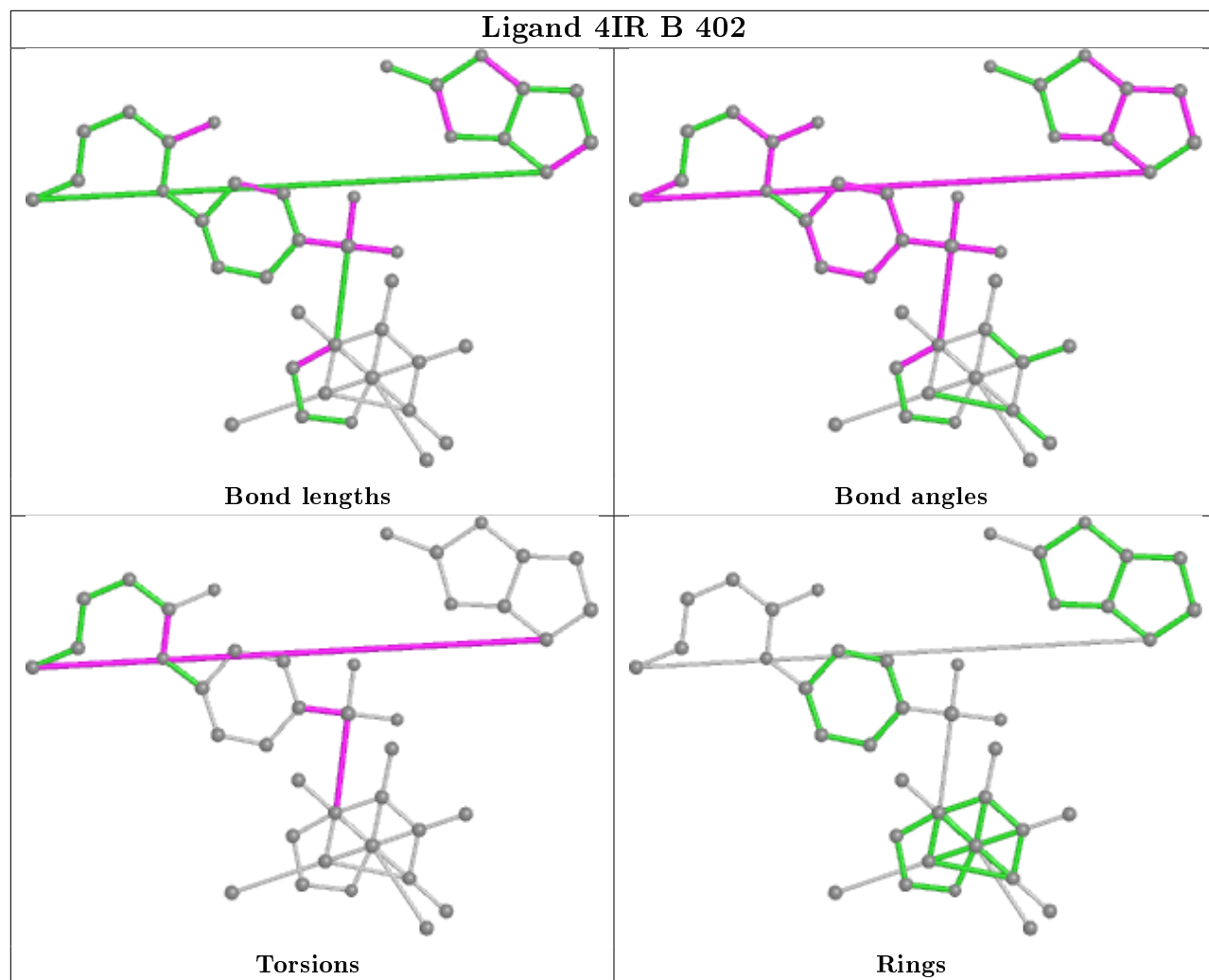
Continued from previous page...

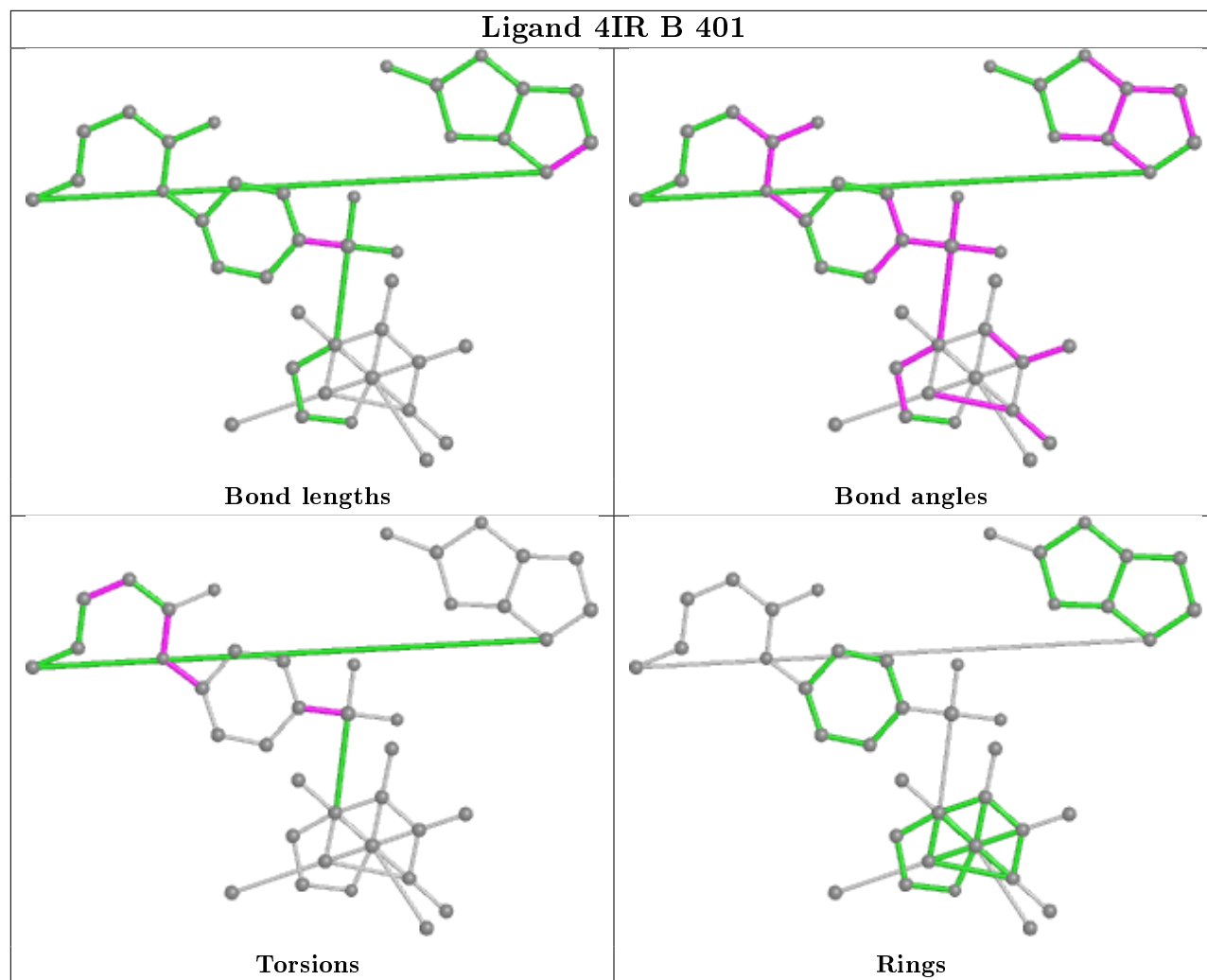
Mol	Chain	Res	Type	Clashes	Symm-Clashes
2	B	401	4IR	13	0

The following is a two-dimensional graphical depiction of Mogul quality analysis of bond lengths, bond angles, torsion angles, and ring geometry for all instances of the Ligand of Interest. In addition, ligands with molecular weight > 250 and outliers as shown on the validation Tables will also be included. For torsion angles, if less than 5% of the Mogul distribution of torsion angles is within 10 degrees of the torsion angle in question, then that torsion angle is considered an outlier. Any bond that is central to one or more torsion angles identified as an outlier by Mogul will be highlighted in the graph. For rings, the root-mean-square deviation (RMSD) between the ring in question and similar rings identified by Mogul is calculated over all ring torsion angles. If the average RMSD is greater than 60 degrees and the minimal RMSD between the ring in question and any Mogul-identified rings is also greater than 60 degrees, then that ring is considered an outlier. The outliers are highlighted in purple. The color gray indicates Mogul did not find sufficient equivalents in the CSD to analyse the geometry.









5.7 Other polymers [\(i\)](#)

There are no such residues in this entry.

5.8 Polymer linkage issues [\(i\)](#)

There are no chain breaks in this entry.

6 Fit of model and data [i](#)

6.1 Protein, DNA and RNA chains [i](#)

In the following table, the column labelled ‘#RSRZ> 2’ contains the number (and percentage) of RSRZ outliers, followed by percent RSRZ outliers for the chain as percentile scores relative to all X-ray entries and entries of similar resolution. The OWAB column contains the minimum, median, 95th percentile and maximum values of the occupancy-weighted average B-factor per residue. The column labelled ‘Q< 0.9’ lists the number of (and percentage) of residues with an average occupancy less than 0.9.

Mol	Chain	Analysed	<RSRZ>	#RSRZ>2	OWAB(Å ²)	Q<0.9
1	A	248/343 (72%)	-0.38	4 (1%) 72 70	23, 34, 62, 81	0
1	B	246/343 (71%)	-0.34	9 (3%) 41 41	23, 34, 59, 75	0
All	All	494/686 (72%)	-0.36	13 (2%) 56 54	23, 34, 62, 81	0

All (13) RSRZ outliers are listed below:

Mol	Chain	Res	Type	RSRZ
1	B	234	ALA	4.0
1	B	230	ALA	3.9
1	B	267	TYR	3.4
1	A	234	ALA	3.2
1	A	233	ASN	3.0
1	A	319	PRO	2.5
1	A	300	GLU	2.5
1	B	49	ASN	2.4
1	B	233	ASN	2.4
1	B	235	GLU	2.3
1	B	135	PRO	2.3
1	B	229	THR	2.1
1	B	66	THR	2.0

6.2 Non-standard residues in protein, DNA, RNA chains [i](#)

There are no non-standard protein/DNA/RNA residues in this entry.

6.3 Carbohydrates [i](#)

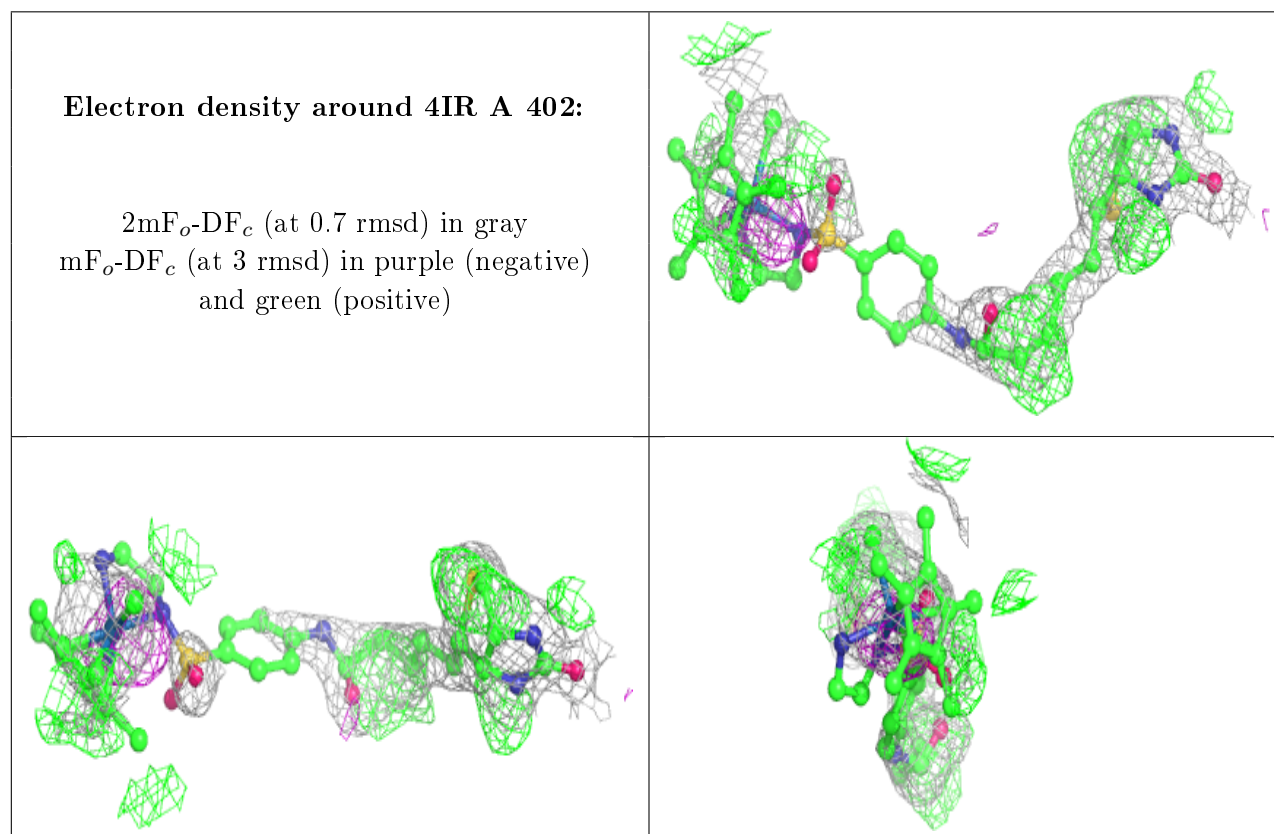
There are no monosaccharides in this entry.

6.4 Ligands i

In the following table, the Atoms column lists the number of modelled atoms in the group and the number defined in the chemical component dictionary. The B-factors column lists the minimum, median, 95th percentile and maximum values of B factors of atoms in the group. The column labelled 'Q< 0.9' lists the number of atoms with occupancy less than 0.9.

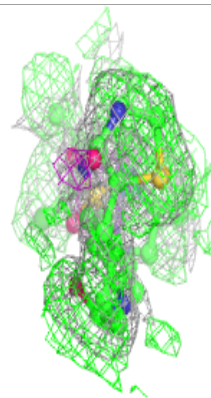
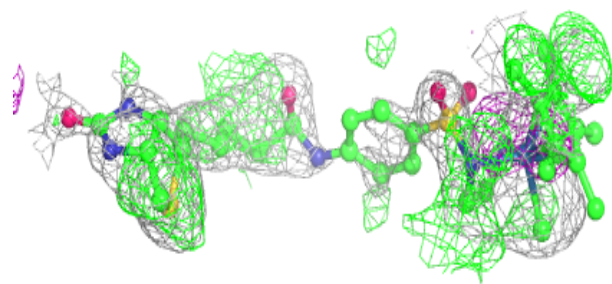
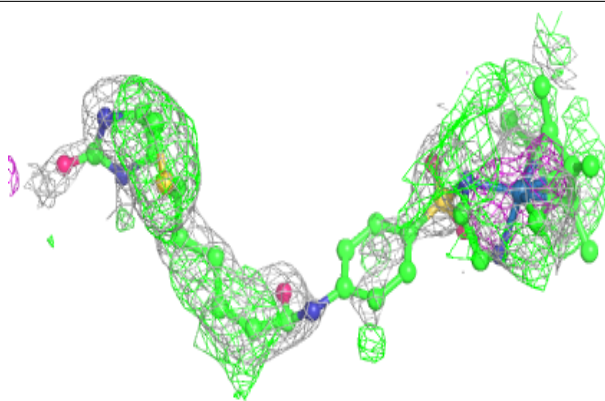
Mol	Type	Chain	Res	Atoms	RSCC	RSR	B-factors(Å ²)	Q<0.9
2	4IR	A	402	41/41	0.76	0.34	20,39,64,73	41
2	4IR	B	402	41/41	0.76	0.34	21,39,60,68	41
3	GOL	B	405	6/6	0.76	0.12	64,77,92,94	0
3	GOL	A	404	6/6	0.78	0.09	58,72,79,86	0
2	4IR	B	401	41/41	0.86	0.23	24,44,77,89	41
2	4IR	A	401	41/41	0.91	0.17	23,43,71,90	41
3	GOL	A	405	6/6	0.93	0.15	53,67,79,86	0
4	SO4	A	406	5/5	0.94	0.08	94,98,107,110	0
3	GOL	B	404	6/6	0.95	0.12	35,38,41,41	6
3	GOL	A	403	6/6	0.95	0.09	36,39,40,42	6
3	GOL	B	403	6/6	0.96	0.07	45,50,53,53	0

The following is a graphical depiction of the model fit to experimental electron density of all instances of the Ligand of Interest. In addition, ligands with molecular weight > 250 and outliers as shown on the geometry validation Tables will also be included. Each fit is shown from different orientation to approximate a three-dimensional view.

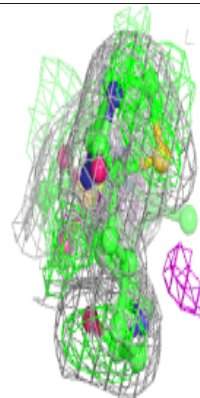
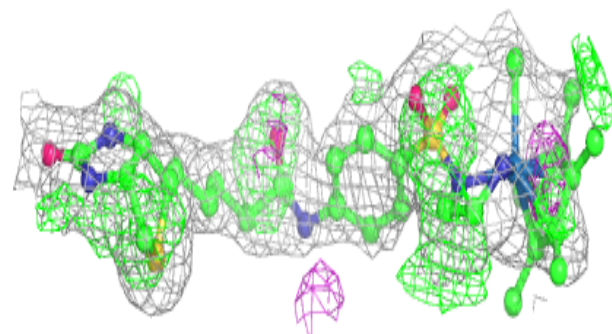
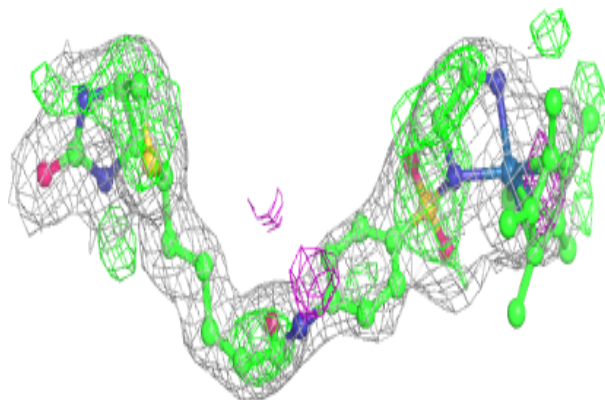


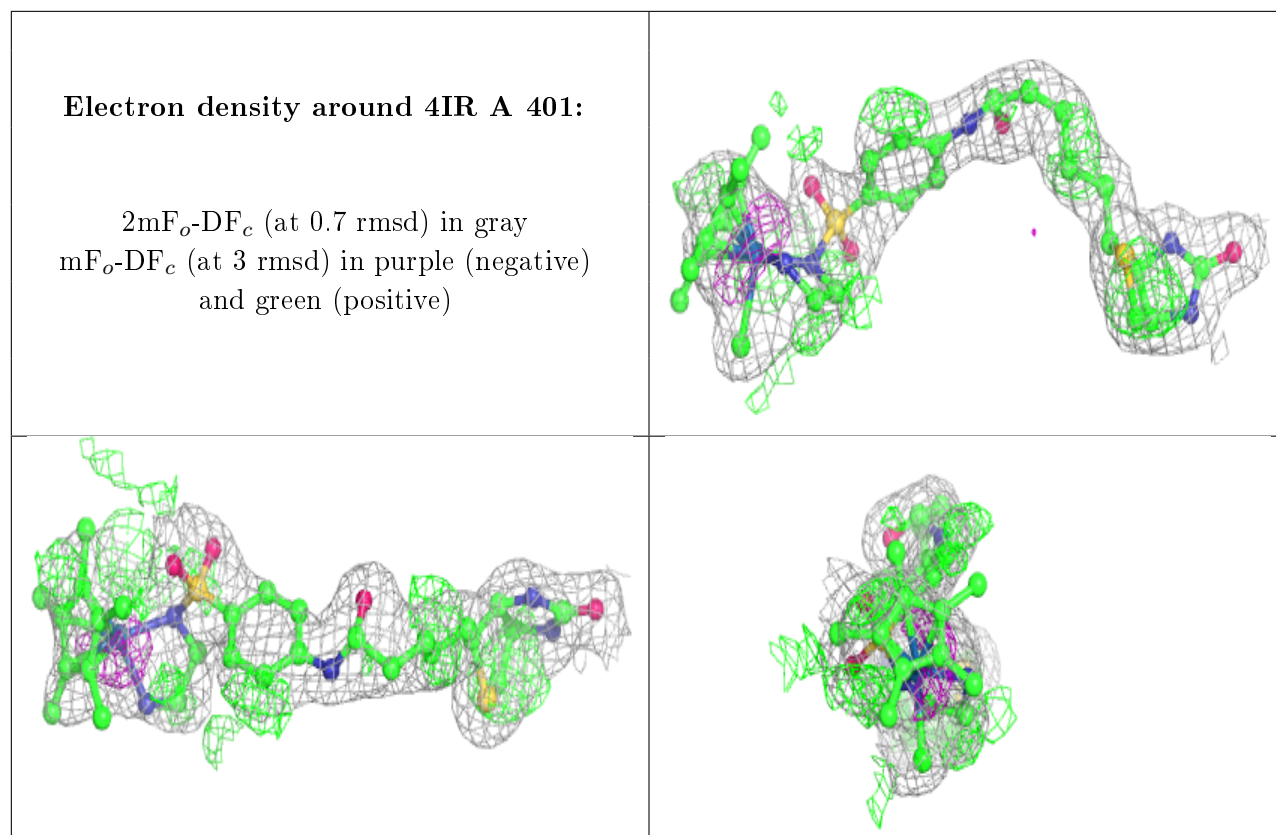
Electron density around 4IR B 402:

$2mF_o-DF_c$ (at 0.7 rmsd) in gray
 mF_o-DF_c (at 3 rmsd) in purple (negative)
and green (positive)

**Electron density around 4IR B 401:**

$2mF_o-DF_c$ (at 0.7 rmsd) in gray
 mF_o-DF_c (at 3 rmsd) in purple (negative)
and green (positive)





6.5 Other polymers [i](#)

There are no such residues in this entry.