



Full wwPDB X-ray Structure Validation Report ⓘ

Feb 28, 2024 – 08:56 PM EST

PDB ID : 5S60
Title : Tubulin-Z27695365-complex
Authors : Muehlethaler, T.; Gioia, D.; Prota, A.E.; Sharpe, M.E.; Cavalli, A.; Steinmetz, M.O.
Deposited on : 2020-11-08
Resolution : 2.30 Å(reported)

This is a Full wwPDB X-ray Structure Validation Report for a publicly released PDB entry.

We welcome your comments at validation@mail.wwpdb.org

A user guide is available at

<https://www.wwpdb.org/validation/2017/XrayValidationReportHelp>

with specific help available everywhere you see the ⓘ symbol.

The types of validation reports are described at

<http://www.wwpdb.org/validation/2017/FAQs#types>.

The following versions of software and data (see [references ⓘ](#)) were used in the production of this report:

MolProbity : 4.02b-467
Mogul : 1.8.5 (274361), CSD as541be (2020)
Xtriage (Phenix) : 1.13
EDS : 2.36
buster-report : 1.1.7 (2018)
Percentile statistics : 20191225.v01 (using entries in the PDB archive December 25th 2019)
Refmac : 5.8.0158
CCP4 : 7.0.044 (Gargrove)
Ideal geometry (proteins) : Engh & Huber (2001)
Ideal geometry (DNA, RNA) : Parkinson et al. (1996)
Validation Pipeline (wwPDB-VP) : 2.36

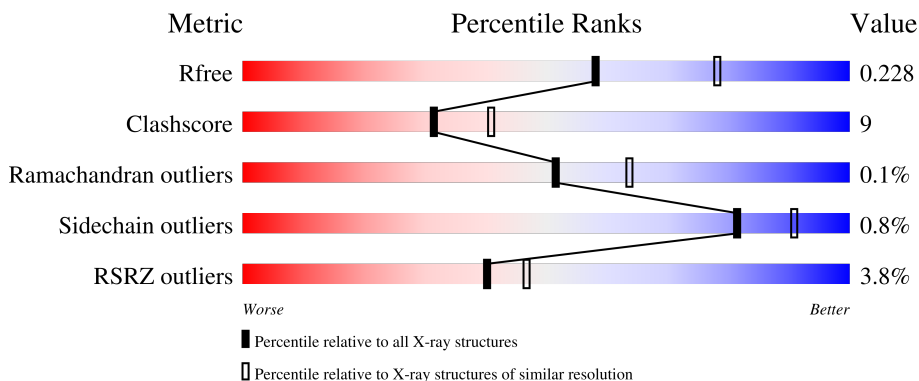
1 Overall quality at a glance i

The following experimental techniques were used to determine the structure:

X-RAY DIFFRACTION

The reported resolution of this entry is 2.30 Å.

Percentile scores (ranging between 0-100) for global validation metrics of the entry are shown in the following graphic. The table shows the number of entries on which the scores are based.



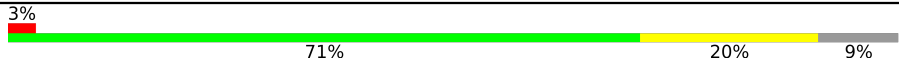
Metric	Whole archive (#Entries)	Similar resolution (#Entries, resolution range(Å))
R_{free}	130704	5042 (2.30-2.30)
Clashscore	141614	5643 (2.30-2.30)
Ramachandran outliers	138981	5575 (2.30-2.30)
Sidechain outliers	138945	5575 (2.30-2.30)
RSRZ outliers	127900	4938 (2.30-2.30)

The table below summarises the geometric issues observed across the polymeric chains and their fit to the electron density. The red, orange, yellow and green segments of the lower bar indicate the fraction of residues that contain outliers for ≥ 3 , 2, 1 and 0 types of geometric quality criteria respectively. A grey segment represents the fraction of residues that are not modelled. The numeric value for each fraction is indicated below the corresponding segment, with a dot representing fractions $\leq 5\%$. The upper red bar (where present) indicates the fraction of residues that have poor fit to the electron density. The numeric value is given above the bar.

Mol	Chain	Length	Quality of chain
1	A	451	
1	C	451	
2	B	445	
2	D	445	
3	E	143	

Continued on next page...

Continued from previous page...

Mol	Chain	Length	Quality of chain
4	F	384	

The following table lists non-polymeric compounds, carbohydrate monomers and non-standard residues in protein, DNA, RNA chains that are outliers for geometric or electron-density-fit criteria:

Mol	Type	Chain	Res	Chirality	Geometry	Clashes	Electron density
9	MES	B	504	-	-	X	-

2 Entry composition i

There are 12 unique types of molecules in this entry. The entry contains 18359 atoms, of which 17 are hydrogens and 0 are deuteriums.

In the tables below, the ZeroOcc column contains the number of atoms modelled with zero occupancy, the AltConf column contains the number of residues with at least one atom in alternate conformation and the Trace column contains the number of residues modelled with at most 2 atoms.

- Molecule 1 is a protein called Tubulin alpha-1B chain.

Mol	Chain	Residues	Atoms					ZeroOcc	AltConf	Trace
			Total	C	N	O	S			
1	A	438	Total	C	N	O	S	0	0	0
			3424	2167	582	653	22			
1	C	440	Total	C	N	O	S	0	0	0
			3437	2175	584	656	22			

- Molecule 2 is a protein called Tubulin beta-2B chain.

Mol	Chain	Residues	Atoms					ZeroOcc	AltConf	Trace
			Total	C	N	O	S			
2	B	426	Total	C	N	O	S	1	0	0
			3359	2110	575	647	27			
2	D	426	Total	C	N	O	S	3	0	0
			3343	2098	570	648	27			

- Molecule 3 is a protein called Stathmin-4.

Mol	Chain	Residues	Atoms					ZeroOcc	AltConf	Trace
			Total	C	N	O	S			
3	E	123	Total	C	N	O	S	0	0	0
			1014	625	183	201	5			

There are 2 discrepancies between the modelled and reference sequences:

Chain	Residue	Modelled	Actual	Comment	Reference
E	3	MET	-	initiating methionine	UNP P63043
E	4	ALA	-	expression tag	UNP P63043

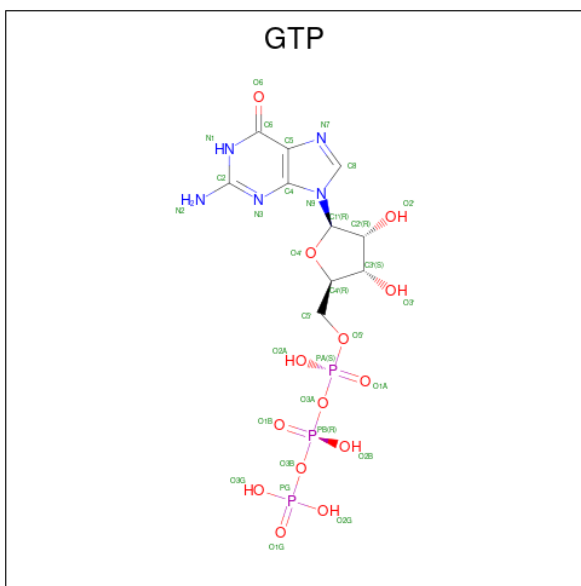
- Molecule 4 is a protein called Tubulin-Tyrosine Ligase.

Mol	Chain	Residues	Atoms					ZeroOcc	AltConf	Trace
			Total	C	N	O	S			
4	F	350	Total	C	N	O	S	0	0	0
			2857	1831	489	523	14			

There are 6 discrepancies between the modelled and reference sequences:

Chain	Residue	Modelled	Actual	Comment	Reference
F	379	HIS	-	expression tag	UNP E1BQ43
F	380	HIS	-	expression tag	UNP E1BQ43
F	381	HIS	-	expression tag	UNP E1BQ43
F	382	HIS	-	expression tag	UNP E1BQ43
F	383	HIS	-	expression tag	UNP E1BQ43
F	384	HIS	-	expression tag	UNP E1BQ43

- Molecule 5 is GUANOSINE-5'-TRIPHOSPHATE (three-letter code: GTP) (formula: $C_{10}H_{16}N_5O_{14}P_3$).



Mol	Chain	Residues	Atoms				ZeroOcc	AltConf	
			Total	C	N	O			P
5	A	1	Total	C	N	O	P	0	0
			32	10	5	14	3		
5	C	1	Total	C	N	O	P	0	0
			32	10	5	14	3		

- Molecule 6 is MAGNESIUM ION (three-letter code: MG) (formula: Mg).

Mol	Chain	Residues	Atoms		ZeroOcc	AltConf
6	A	1	Total	Mg	0	0
			1	1		
6	B	1	Total	Mg	0	0
			1	1		
6	C	1	Total	Mg	0	0
			1	1		
6	D	1	Total	Mg	0	0
			1	1		

Continued on next page...

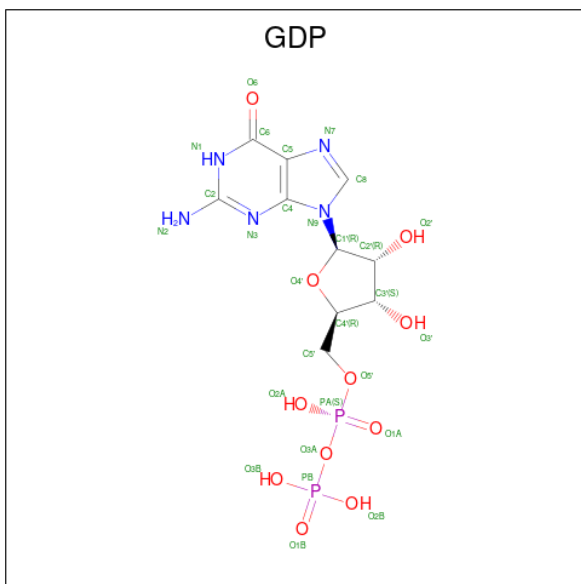
Continued from previous page...

Mol	Chain	Residues	Atoms		ZeroOcc	AltConf
6	F	1	Total	Mg	0	0
			1	1		

- Molecule 7 is CALCIUM ION (three-letter code: CA) (formula: Ca).

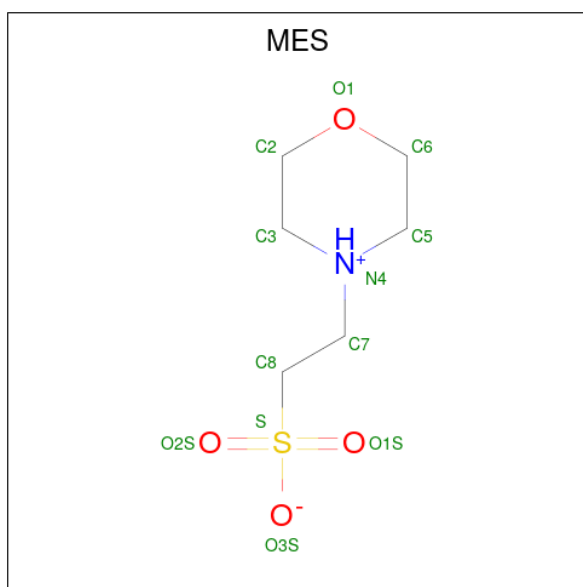
Mol	Chain	Residues	Atoms		ZeroOcc	AltConf
7	A	1	Total	Ca	0	0
			1	1		
7	B	1	Total	Ca	0	0
			1	1		
7	C	1	Total	Ca	0	0
			1	1		
7	E	1	Total	Ca	0	0
			1	1		

- Molecule 8 is GUANOSINE-5'-DIPHOSPHATE (three-letter code: GDP) (formula: C₁₀H₁₅N₅O₁₁P₂).



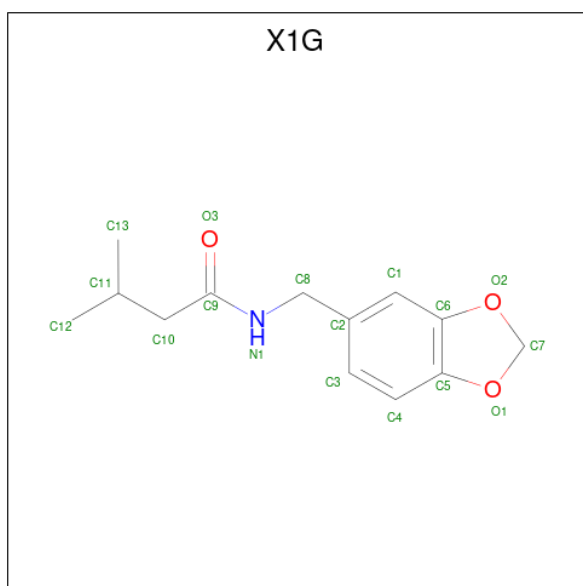
Mol	Chain	Residues	Atoms				ZeroOcc	AltConf	
8	B	1	Total	C	N	O	P	0	0
			28	10	5	11	2		
8	D	1	Total	C	N	O	P	0	0
			28	10	5	11	2		

- Molecule 9 is 2-(N-MORPHOLINO)-ETHANESULFONIC ACID (three-letter code: MES) (formula: C₆H₁₃NO₄S).



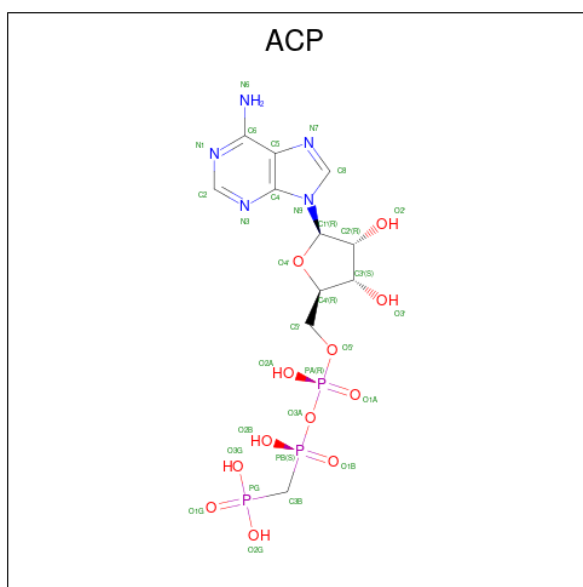
Mol	Chain	Residues	Atoms					ZeroOcc	AltConf
			Total	C	N	O	S		
9	B	1	12	6	1	4	1	0	0

- Molecule 10 is N-[(2H-1,3-benzodioxol-5-yl)methyl]-3-methylbutanamide (three-letter code: X1G) (formula: C₁₃H₁₇NO₃) (labeled as "Ligand of Interest" by depositor).



Mol	Chain	Residues	Atoms					ZeroOcc	AltConf
			Total	C	H	N	O		
10	C	1	34	13	17	1	3	0	0

- Molecule 11 is PHOSPHOMETHYLPHOSPHONIC ACID ADENYLATE ESTER (three-letter code: ACP) (formula: C₁₁H₁₈N₅O₁₂P₃).



Mol	Chain	Residues	Atoms					ZeroOcc	AltConf
			Total	C	N	O	P		
11	F	1	31	11	5	12	3	0	0

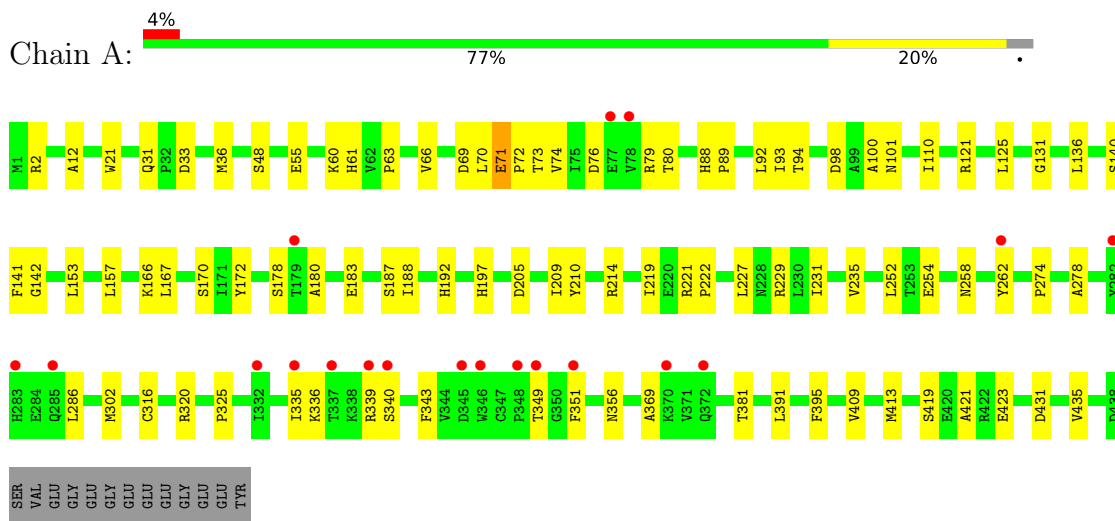
- Molecule 12 is water.

Mol	Chain	Residues	Atoms		ZeroOcc	AltConf
12	A	122	Total	O	0	0
			122	122		
12	B	139	Total	O	0	0
			139	139		
12	C	300	Total	O	0	0
			300	300		
12	D	91	Total	O	0	0
			91	91		
12	E	35	Total	O	0	0
			35	35		
12	F	32	Total	O	0	0
			32	32		

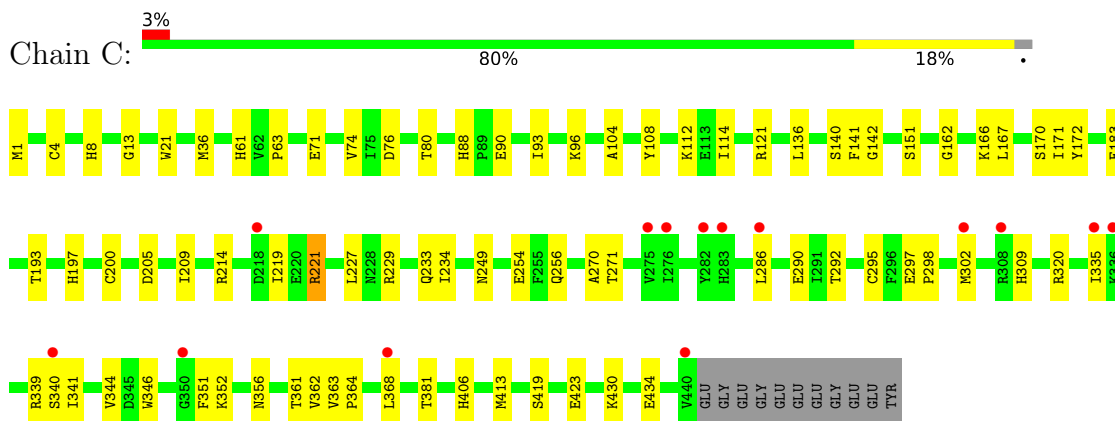
3 Residue-property plots [i](#)

These plots are drawn for all protein, RNA, DNA and oligosaccharide chains in the entry. The first graphic for a chain summarises the proportions of the various outlier classes displayed in the second graphic. The second graphic shows the sequence view annotated by issues in geometry and electron density. Residues are color-coded according to the number of geometric quality criteria for which they contain at least one outlier: green = 0, yellow = 1, orange = 2 and red = 3 or more. A red dot above a residue indicates a poor fit to the electron density ($RSRZ > 2$). Stretches of 2 or more consecutive residues without any outlier are shown as a green connector. Residues present in the sample, but not in the model, are shown in grey.

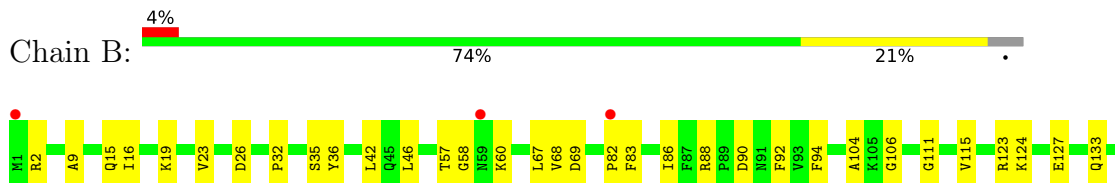
- Molecule 1: Tubulin alpha-1B chain

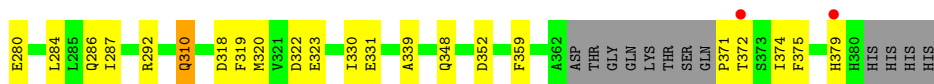


- Molecule 1: Tubulin alpha-1B chain



- Molecule 2: Tubulin beta-2B chain





4 Data and refinement statistics

Property	Value	Source
Space group	P 21 21 21	Depositor
Cell constants a, b, c, α , β , γ	105.35Å 160.06Å 178.51Å 90.00° 90.00° 90.00°	Depositor
Resolution (Å)	63.73 – 2.30 119.17 – 2.30	Depositor EDS
% Data completeness (in resolution range)	99.3 (63.73-2.30) 99.4 (119.17-2.30)	Depositor EDS
R_{merge}	0.08	Depositor
R_{sym}	(Not available)	Depositor
$\langle I/\sigma(I) \rangle$ ¹	1.54 (at 2.29Å)	Xtrriage
Refinement program	PHENIX 1.18.2_3874	Depositor
R, R_{free}	0.194 , 0.228 0.194 , 0.228	Depositor DCC
R_{free} test set	6597 reflections (4.95%)	wwPDB-VP
Wilson B-factor (Å ²)	52.1	Xtrriage
Anisotropy	0.352	Xtrriage
Bulk solvent k_{sol} (e/Å ³), B_{sol} (Å ²)	0.31 , 49.2	EDS
L-test for twinning ²	$\langle L \rangle = 0.50$, $\langle L^2 \rangle = 0.34$	Xtrriage
Estimated twinning fraction	No twinning to report.	Xtrriage
F_o, F_c correlation	0.95	EDS
Total number of atoms	18359	wwPDB-VP
Average B, all atoms (Å ²)	69.0	wwPDB-VP

Xtrriage's analysis on translational NCS is as follows: *The largest off-origin peak in the Patterson function is 2.46% of the height of the origin peak. No significant pseudotranslation is detected.*

¹Intensities estimated from amplitudes.

²Theoretical values of $\langle |L| \rangle$, $\langle L^2 \rangle$ for acentric reflections are 0.5, 0.333 respectively for untwinned datasets, and 0.375, 0.2 for perfectly twinned datasets.

5 Model quality

5.1 Standard geometry

Bond lengths and bond angles in the following residue types are not validated in this section: MES, X1G, ACP, GTP, CA, GDP, MG

The Z score for a bond length (or angle) is the number of standard deviations the observed value is removed from the expected value. A bond length (or angle) with $|Z| > 5$ is considered an outlier worth inspection. RMSZ is the root-mean-square of all Z scores of the bond lengths (or angles).

Mol	Chain	Bond lengths		Bond angles	
		RMSZ	# Z >5	RMSZ	# Z >5
1	A	0.25	0/3502	0.42	0/4754
1	C	0.26	0/3515	0.43	0/4772
2	B	0.25	0/3433	0.42	0/4648
2	D	0.25	0/3416	0.42	0/4626
3	E	0.24	0/1022	0.35	0/1356
4	F	0.24	0/2922	0.39	0/3948
All	All	0.25	0/17810	0.41	0/24104

There are no bond length outliers.

There are no bond angle outliers.

There are no chirality outliers.

There are no planarity outliers.

5.2 Too-close contacts

In the following table, the Non-H and H(model) columns list the number of non-hydrogen atoms and hydrogen atoms in the chain respectively. The H(added) column lists the number of hydrogen atoms added and optimized by MolProbity. The Clashes column lists the number of clashes within the asymmetric unit, whereas Symm-Clashes lists symmetry-related clashes.

Mol	Chain	Non-H	H(model)	H(added)	Clashes	Symm-Clashes
1	A	3424	0	3335	63	0
1	C	3437	0	3348	56	0
2	B	3359	0	3241	67	0
2	D	3343	0	3222	62	0
3	E	1014	0	1029	18	0
4	F	2857	0	2825	56	0
5	A	32	0	12	1	0

Continued on next page...

Continued from previous page...

Mol	Chain	Non-H	H(model)	H(added)	Clashes	Symm-Clashes
5	C	32	0	12	0	0
6	A	1	0	0	0	0
6	B	1	0	0	0	0
6	C	1	0	0	0	0
6	D	1	0	0	0	0
6	F	1	0	0	0	0
7	A	1	0	0	0	0
7	B	1	0	0	0	0
7	C	1	0	0	0	0
7	E	1	0	0	0	0
8	B	28	0	12	1	0
8	D	28	0	12	2	0
9	B	12	0	12	6	0
10	C	17	17	0	0	0
11	F	31	0	14	4	0
12	A	122	0	0	5	0
12	B	139	0	0	3	0
12	C	300	0	0	10	0
12	D	91	0	0	5	0
12	E	35	0	0	2	0
12	F	32	0	0	2	0
All	All	18342	17	17074	313	0

The all-atom clashscore is defined as the number of clashes found per 1000 atoms (including hydrogen atoms). The all-atom clashscore for this structure is 9.

All (313) close contacts within the same asymmetric unit are listed below, sorted by their clash magnitude.

Atom-1	Atom-2	Interatomic distance (Å)	Clash overlap (Å)
4:F:102:PRO:HG2	4:F:105:LEU:HD13	1.53	0.89
4:F:236:LYS:HB3	4:F:240:LEU:HD13	1.57	0.86
1:C:93:ILE:HD11	1:C:121:ARG:HG3	1.59	0.83
1:A:335:ILE:HG23	1:A:339:ARG:HG3	1.63	0.80
1:C:335:ILE:HG23	1:C:339:ARG:HG3	1.65	0.79
1:C:270:ALA:HB3	1:C:302:MET:HE2	1.64	0.78
4:F:331:GLU:OE2	11:F:401:ACP:O3G	2.04	0.76
1:A:71:GLU:OE2	1:A:73:THR:OG1	2.04	0.75
4:F:128:ARG:NH2	4:F:174:ASP:OD1	2.21	0.74
4:F:10:ASN:HB2	4:F:44:ARG:HH22	1.53	0.73
2:D:1:MET:HG3	2:D:50:ASN:HB2	1.70	0.73
4:F:310:GLN:HA	4:F:310:GLN:HE21	1.55	0.71

Continued on next page...

Continued from previous page...

Atom-1	Atom-2	Interatomic distance (Å)	Clash overlap (Å)
2:B:2:ARG:HB3	2:B:133:GLN:CG	2.21	0.71
2:B:158:ARG:CZ	9:B:504:MES:H21	2.23	0.69
2:B:136:GLN:HA	2:B:167:ASN:O	1.91	0.69
1:C:339:ARG:O	12:C:701:HOH:O	2.10	0.69
2:D:334:ASN:HD21	2:D:338:LYS:HE3	1.57	0.67
4:F:102:PRO:HG2	4:F:105:LEU:CD1	2.23	0.67
4:F:197:ARG:NH1	4:F:257:GLU:OE2	2.22	0.67
2:B:83:PHE:O	2:B:86:ILE:HG22	1.95	0.67
1:C:271:THR:HG21	1:C:295:CYS:O	1.95	0.67
2:D:269:MET:HG3	2:D:303:ALA:HB3	1.77	0.66
1:C:76:ASP:O	1:C:80:THR:HG22	1.95	0.66
2:D:177:VAL:HG21	2:D:206:ASN:HB3	1.78	0.66
2:B:69:ASP:O	2:B:94:PHE:HA	1.97	0.65
2:B:207:GLU:OE1	12:B:601:HOH:O	2.15	0.65
2:B:2:ARG:HB3	2:B:133:GLN:HG2	1.80	0.64
2:D:21:TRP:CE3	2:D:63:PRO:HB3	2.32	0.64
2:D:136:GLN:HA	2:D:167:ASN:O	1.98	0.64
1:A:71:GLU:HG2	1:A:72:PRO:HD2	1.80	0.64
2:B:329:ASP:O	2:B:333:LEU:HG	1.98	0.64
1:C:320:ARG:HA	1:C:356:ASN:O	1.98	0.64
1:C:234:ILE:HG21	1:C:302:MET:SD	2.37	0.64
1:C:256:GLN:NE2	12:C:707:HOH:O	2.32	0.63
2:B:88:ARG:NH1	2:B:90:ASP:HB2	2.14	0.63
1:C:1:MET:O	12:C:702:HOH:O	2.15	0.63
2:B:370:GLY:O	2:B:371:LEU:HD23	1.97	0.63
1:A:335:ILE:HG23	1:A:339:ARG:CG	2.28	0.62
2:D:11:GLN:O	2:D:15:GLN:HG2	2.00	0.62
2:B:141:LEU:HD12	2:B:172:MET:SD	2.40	0.61
1:A:76:ASP:O	1:A:80:THR:HG22	2.01	0.61
2:D:21:TRP:CZ3	2:D:63:PRO:HB3	2.36	0.60
2:D:83:PHE:O	2:D:86:ILE:HG22	2.01	0.60
2:B:67:LEU:HD22	2:B:92:PHE:CE2	2.36	0.60
1:C:93:ILE:CD1	1:C:121:ARG:HG3	2.31	0.60
1:C:419:SER:O	1:C:423:GLU:HG3	2.01	0.60
4:F:214:TYR:HB3	4:F:375:PHE:HB3	1.84	0.60
4:F:292:ARG:HD2	4:F:379:HIS:O	2.02	0.60
1:A:188:ILE:HD12	1:A:395:PHE:CD2	2.37	0.59
1:A:70:LEU:HD13	1:A:110:ILE:HG21	1.84	0.59
2:D:106:GLY:O	2:D:111:GLY:HA3	2.02	0.59
2:D:438:ALA:O	12:D:601:HOH:O	2.16	0.59
1:C:142:GLY:CA	1:C:183:GLU:HG2	2.33	0.59

Continued on next page...

Continued from previous page...

Atom-1	Atom-2	Interatomic distance (Å)	Clash overlap (Å)
4:F:159:GLY:C	4:F:160:ILE:HD12	2.23	0.59
1:C:254:GLU:HG2	1:C:352:LYS:HE2	1.85	0.59
3:E:85:LYS:O	3:E:89:GLU:HG3	2.01	0.59
2:D:432:TYR:OH	12:D:602:HOH:O	2.17	0.59
4:F:10:ASN:CB	4:F:44:ARG:HH22	2.15	0.58
4:F:200:ASP:OD1	4:F:222:ARG:HB2	2.03	0.58
4:F:371:PRO:HA	4:F:372:THR:HB	1.84	0.58
2:D:1:MET:HA	2:D:1:MET:CE	2.33	0.58
4:F:371:PRO:HA	4:F:372:THR:C	2.23	0.58
4:F:371:PRO:HA	4:F:372:THR:O	2.03	0.58
2:B:23:VAL:HG21	2:B:232:SER:HB3	1.86	0.57
2:D:12:CYS:HB2	8:D:501:GDP:C8	2.39	0.57
3:E:92:ASN:O	3:E:96:MET:HG2	2.04	0.57
1:A:172:TYR:HB3	1:A:205:ASP:HA	1.86	0.57
1:A:419:SER:O	1:A:423:GLU:HG3	2.05	0.57
2:B:323:MET:CE	2:B:373:MET:HB2	2.34	0.57
2:D:171:VAL:HA	2:D:204:ILE:O	2.04	0.57
4:F:348:GLN:NE2	4:F:352:ASP:OD1	2.38	0.57
2:B:337:ASN:OD1	4:F:36:ARG:HD3	2.05	0.56
2:B:424:ASN:HB3	12:B:607:HOH:O	2.04	0.56
2:B:199:ASP:OD1	9:B:504:MES:H32	2.05	0.56
4:F:371:PRO:CA	4:F:372:THR:HB	2.35	0.56
1:A:142:GLY:HA3	1:A:183:GLU:OE2	2.05	0.56
2:B:196:GLU:HG3	12:E:322:HOH:O	2.05	0.56
4:F:219:GLY:HA3	4:F:264:PHE:CZ	2.41	0.56
3:E:106:GLU:O	3:E:110:GLU:HG3	2.06	0.56
1:A:88:HIS:HB2	1:A:89:PRO:HD2	1.89	0.55
4:F:246:GLN:O	4:F:250:SER:HB3	2.06	0.55
2:D:1:MET:HG3	2:D:50:ASN:CB	2.36	0.55
1:C:340:SER:HA	12:C:701:HOH:O	2.06	0.55
1:C:249:ASN:OD1	1:C:356:ASN:ND2	2.40	0.55
1:A:229:ARG:NH1	12:A:603:HOH:O	2.40	0.54
2:D:1:MET:CG	2:D:50:ASN:HB2	2.35	0.54
1:A:21:TRP:CZ3	1:A:63:PRO:HB3	2.43	0.54
1:C:221:ARG:HG3	2:D:325:MET:HG2	1.89	0.54
4:F:242:ASN:HD22	4:F:245:ILE:HD12	1.72	0.54
1:A:209:ILE:HG22	1:A:227:LEU:HD22	1.89	0.54
2:B:88:ARG:HH11	2:B:90:ASP:HB2	1.71	0.54
2:B:295:MET:CG	2:B:377:PHE:HB2	2.38	0.54
1:C:4:CYS:SG	1:C:136:LEU:HG	2.48	0.54
1:C:286:LEU:HA	1:C:290:GLU:OE1	2.08	0.54

Continued on next page...

Continued from previous page...

Atom-1	Atom-2	Interatomic distance (Å)	Clash overlap (Å)
1:C:166:LYS:HE2	1:C:197:HIS:O	2.08	0.53
1:C:229:ARG:NH2	12:C:717:HOH:O	2.42	0.53
4:F:241:THR:OG1	11:F:401:ACP:O3'	2.20	0.53
2:D:172:MET:HG3	2:D:387:LEU:HD11	1.89	0.53
2:D:397:ALA:HA	2:D:400:ARG:NH1	2.23	0.53
2:D:69:ASP:O	2:D:94:PHE:HA	2.08	0.53
2:B:106:GLY:O	2:B:111:GLY:HA3	2.08	0.53
2:B:158:ARG:NH1	2:B:196:GLU:O	2.41	0.53
2:D:147:SER:HB2	2:D:190:SER:OG	2.08	0.53
1:A:74:VAL:HB	12:A:606:HOH:O	2.08	0.53
1:A:210:TYR:CE1	1:A:222:PRO:HD2	2.44	0.53
1:A:210:TYR:CZ	1:A:222:PRO:HD2	2.43	0.53
4:F:280:GLU:OE1	4:F:284:LEU:HD23	2.09	0.53
1:A:336:LYS:HG3	3:E:24:LEU:HD13	1.92	0.52
4:F:91:CYS:HA	12:F:530:HOH:O	2.09	0.52
4:F:2:TYR:CE1	4:F:359:PHE:HB3	2.44	0.52
2:D:248:LEU:HD23	2:D:354:ALA:HB2	1.91	0.52
2:D:124:LYS:C	2:D:124:LYS:HD3	2.30	0.52
2:D:67:LEU:HD22	2:D:92:PHE:CE2	2.44	0.52
2:B:42:LEU:H	2:B:42:LEU:HD12	1.74	0.52
2:D:152:LEU:O	2:D:156:LYS:HG2	2.09	0.52
4:F:229:ASN:ND2	4:F:232:ASN:HB3	2.24	0.52
1:A:254:GLU:HG2	1:A:258:ASN:ND2	2.25	0.51
1:C:104:ALA:HB2	1:C:413:MET:SD	2.50	0.51
1:C:297:GLU:OE1	1:C:298:PRO:HD2	2.10	0.51
2:B:431:GLU:O	2:B:434:GLN:HG2	2.10	0.51
2:D:215:ARG:O	2:D:218:LYS:HE3	2.11	0.51
1:A:214:ARG:HG2	1:A:219:ILE:O	2.10	0.51
2:D:397:ALA:O	2:D:401:ARG:NH1	2.43	0.51
2:D:1:MET:HA	2:D:1:MET:HE3	1.91	0.51
2:B:158:ARG:HG3	9:B:504:MES:H62	1.91	0.51
2:D:141:LEU:HD12	2:D:172:MET:SD	2.51	0.51
2:B:123:ARG:O	2:B:127:GLU:HG3	2.11	0.51
1:A:166:LYS:HE2	1:A:197:HIS:O	2.11	0.51
4:F:103:THR:HG23	4:F:128:ARG:NH2	2.25	0.51
1:A:231:ILE:O	1:A:235:VAL:HG23	2.11	0.50
2:B:253:ARG:NH1	9:B:504:MES:O1S	2.44	0.50
1:C:286:LEU:HB2	12:C:733:HOH:O	2.10	0.50
1:A:55:GLU:HA	1:A:60:LYS:O	2.12	0.50
2:B:15:GLN:NE2	8:B:501:GDP:O6	2.44	0.50
2:B:36:TYR:CD1	2:B:46:LEU:HD21	2.47	0.50

Continued on next page...

Continued from previous page...

Atom-1	Atom-2	Interatomic distance (Å)	Clash overlap (Å)
4:F:216:TYR:CE2	4:F:218:GLU:HB2	2.47	0.50
4:F:220:VAL:HG12	4:F:263:PHE:CE1	2.46	0.50
2:D:334:ASN:ND2	2:D:338:LYS:HE3	2.24	0.50
4:F:131:PHE:CE1	4:F:182:ILE:HG21	2.47	0.50
1:C:344:VAL:HG21	1:C:346:TRP:CE2	2.47	0.50
2:B:104:ALA:HB2	2:B:413:MET:SD	2.51	0.50
2:D:143:GLY:HA3	8:D:501:GDP:O3A	2.11	0.50
2:D:318:ILE:N	2:D:318:ILE:HD12	2.26	0.49
1:C:21:TRP:CZ3	1:C:63:PRO:HB3	2.48	0.49
1:C:256:GLN:NE2	12:C:719:HOH:O	2.44	0.49
2:D:123:ARG:O	2:D:127:GLU:HG3	2.12	0.49
1:C:430:LYS:O	1:C:434:GLU:HG3	2.12	0.49
1:A:71:GLU:HG2	1:A:72:PRO:CD	2.41	0.49
1:C:309:HIS:ND1	12:C:710:HOH:O	2.35	0.49
1:C:142:GLY:HA3	1:C:183:GLU:HG2	1.94	0.49
1:C:292:THR:HG22	1:C:335:ILE:CD1	2.41	0.49
2:D:402:LYS:HE2	2:D:415:GLU:OE1	2.13	0.49
1:A:325:PRO:HB3	3:E:20:PHE:CE1	2.48	0.49
2:D:295:MET:HE2	2:D:377:PHE:HB2	1.93	0.49
11:F:401:ACP:O3G	11:F:401:ACP:O1B	2.31	0.49
1:C:8:HIS:HB3	1:C:13:GLY:O	2.13	0.49
2:D:392:SER:O	2:D:396:THR:HG22	2.13	0.49
1:A:141:PHE:HB3	1:A:187:SER:OG	2.13	0.48
3:E:60:ARG:O	3:E:64:GLN:HG3	2.13	0.48
2:B:402:LYS:HB3	2:B:405:LEU:HD12	1.95	0.48
1:C:88:HIS:HE1	1:C:90:GLU:HG3	1.78	0.48
1:A:209:ILE:HD11	1:A:302:MET:SD	2.54	0.48
2:B:199:ASP:OD2	9:B:504:MES:H52	2.12	0.48
1:A:340:SER:HA	12:A:665:HOH:O	2.14	0.48
2:D:211:ASP:O	2:D:215:ARG:HB2	2.14	0.48
2:B:295:MET:HG2	2:B:377:PHE:HB2	1.96	0.47
2:D:11:GLN:HA	2:D:74:THR:HG21	1.96	0.47
4:F:318:ASP:OD2	11:F:401:ACP:O2G	2.33	0.47
1:A:98:ASP:HB2	5:A:501:GTP:O2G	2.14	0.47
3:E:44:ASP:HB3	3:E:45:PRO:HD2	1.97	0.47
2:B:187:ALA:O	2:B:191:VAL:HG23	2.15	0.47
3:E:85:LYS:NZ	12:E:306:HOH:O	2.46	0.47
1:A:278:ALA:HA	1:A:369:ALA:HB2	1.96	0.47
4:F:151:SER:HB3	4:F:180:HIS:CD2	2.50	0.47
1:A:12:ALA:CB	1:A:140:SER:HB3	2.45	0.47
1:A:79:ARG:HG2	1:A:92:LEU:HD12	1.96	0.47

Continued on next page...

Continued from previous page...

Atom-1	Atom-2	Interatomic distance (Å)	Clash overlap (Å)
3:E:138:GLU:O	3:E:142:GLU:HG3	2.14	0.47
1:A:343:PHE:CD1	1:A:349:THR:HG23	2.50	0.46
2:B:124:LYS:HD3	2:B:124:LYS:C	2.36	0.46
2:B:318:ILE:N	2:B:318:ILE:HD12	2.31	0.46
1:C:93:ILE:HD11	1:C:121:ARG:CG	2.40	0.46
1:A:100:ALA:HA	2:B:254:LYS:HG3	1.98	0.46
3:E:92:ASN:HD21	3:E:96:MET:HE2	1.80	0.46
2:B:2:ARG:NE	2:B:133:GLN:HG2	2.30	0.46
1:A:12:ALA:HB3	1:A:140:SER:HB3	1.98	0.46
1:A:320:ARG:HG3	12:A:692:HOH:O	2.16	0.46
1:A:351:PHE:HE1	3:E:24:LEU:HD11	1.80	0.46
1:C:209:ILE:HG22	1:C:227:LEU:HD22	1.98	0.46
4:F:188:LYS:HB3	4:F:323:GLU:HG2	1.97	0.46
2:B:26:ASP:OD1	2:B:369:ARG:NH2	2.49	0.46
1:C:162:GLY:HA2	3:E:94:ILE:HD11	1.97	0.46
2:D:167:ASN:ND2	12:D:610:HOH:O	2.48	0.46
1:A:36:MET:HB3	1:A:61:HIS:CE1	2.51	0.45
1:C:167:LEU:HG	1:C:200:CYS:HB3	1.98	0.45
1:A:136:LEU:HD21	1:A:252:LEU:HD21	1.98	0.45
2:B:323:MET:HE2	2:B:373:MET:HB2	1.98	0.45
4:F:286:GLN:HG3	12:F:513:HOH:O	2.15	0.45
1:A:93:ILE:HD11	1:A:121:ARG:HG3	1.97	0.45
1:A:178:SER:HB2	1:A:183:GLU:OE1	2.16	0.45
4:F:225:SER:HB2	4:F:252:ASN:O	2.16	0.45
1:A:188:ILE:HD12	1:A:395:PHE:HB2	1.98	0.45
1:A:153:LEU:O	1:A:157:LEU:HG	2.17	0.45
2:D:103:TRP:CE3	2:D:189:LEU:HD13	2.52	0.45
2:D:247:GLN:HB3	12:D:609:HOH:O	2.16	0.45
1:A:76:ASP:OD1	1:A:79:ARG:NH1	2.49	0.45
1:A:227:LEU:O	1:A:231:ILE:HG13	2.16	0.45
1:A:274:PRO:HB3	1:A:286:LEU:HD12	1.99	0.45
1:A:48:SER:HB2	12:A:648:HOH:O	2.16	0.45
2:B:395:PHE:CE1	2:B:422:GLU:HB2	2.51	0.45
2:B:292:THR:HG22	2:B:335:VAL:HG21	1.99	0.44
2:B:159:GLU:HB2	3:E:72:LEU:HD13	1.99	0.44
1:C:151:SER:HB2	1:C:193:THR:CG2	2.46	0.44
2:D:115:VAL:HG23	2:D:153:LEU:HD23	1.98	0.44
2:D:15:GLN:O	2:D:19:LYS:HG2	2.17	0.44
2:B:174:SER:OG	2:B:207:GLU:HB2	2.17	0.44
2:B:334:ASN:OD1	2:B:338:LYS:HD3	2.17	0.44
3:E:72:LEU:O	3:E:76:ARG:HG2	2.17	0.44

Continued on next page...

Continued from previous page...

Atom-1	Atom-2	Interatomic distance (Å)	Clash overlap (Å)
4:F:98:TYR:CE1	4:F:130:VAL:HG12	2.52	0.44
4:F:188:LYS:O	4:F:322:ASP:HB2	2.17	0.44
1:A:66:VAL:HG23	1:A:125:LEU:HD12	1.98	0.44
1:C:341:ILE:HD13	1:C:351:PHE:HZ	1.82	0.44
2:D:372:LYS:O	12:D:603:HOH:O	2.21	0.44
4:F:220:VAL:HG11	4:F:339:ALA:HB2	1.99	0.44
1:A:69:ASP:O	1:A:94:THR:HA	2.17	0.44
1:C:361:THR:HG22	1:C:362:VAL:N	2.32	0.44
1:A:409:VAL:HA	1:A:413:MET:O	2.18	0.44
2:D:308:ARG:HG2	2:D:342:TYR:CZ	2.53	0.44
4:F:197:ARG:HB2	4:F:224:SER:O	2.18	0.44
2:B:42:LEU:HB2	2:B:358:ILE:HD11	1.99	0.44
1:C:36:MET:HB3	1:C:61:HIS:CE1	2.52	0.43
4:F:287:ILE:HG23	4:F:319:PHE:CE2	2.53	0.43
1:C:141:PHE:CE1	1:C:170:SER:HB3	2.54	0.43
1:A:188:ILE:HD12	1:A:395:PHE:CG	2.54	0.43
1:C:140:SER:HA	1:C:171:ILE:HB	2.01	0.43
2:D:387:LEU:HD23	2:D:387:LEU:C	2.39	0.43
1:C:74:VAL:HB	12:C:743:HOH:O	2.17	0.43
2:B:16:ILE:HD13	2:B:231:VAL:HG11	2.00	0.43
1:C:108:TYR:O	1:C:112:LYS:HG2	2.18	0.43
2:D:6:HIS:CD2	2:D:21:TRP:HE1	2.36	0.43
1:A:2:ARG:HB3	1:A:131:GLY:O	2.18	0.43
1:C:406:HIS:CG	2:D:263:PRO:HD3	2.53	0.43
2:D:347:ILE:HG22	2:D:350:ASN:HB3	2.01	0.43
2:B:199:ASP:O	2:B:266:HIS:HB2	2.18	0.43
1:C:136:LEU:HD23	1:C:167:LEU:HB2	2.01	0.43
1:A:431:ASP:O	1:A:435:VAL:HG23	2.18	0.43
1:C:96:LYS:NZ	2:D:130:ASP:OD1	2.47	0.43
2:D:146:GLY:O	2:D:150:GLY:HA3	2.19	0.43
2:B:15:GLN:O	2:B:19:LYS:HG2	2.19	0.43
2:B:317:ALA:C	2:B:318:ILE:HD12	2.39	0.43
1:C:88:HIS:CE1	1:C:90:GLU:HG3	2.53	0.43
4:F:126:ASP:OD2	4:F:128:ARG:HG3	2.19	0.43
4:F:320:MET:CG	4:F:330:ILE:HD11	2.49	0.43
2:B:244:PHE:CE1	2:B:358:ILE:HD12	2.54	0.42
2:D:235:MET:HB3	2:D:235:MET:HE2	1.91	0.42
2:B:35:SER:HG	2:B:60:LYS:HZ3	1.60	0.42
2:B:325:MET:HE2	2:B:355:VAL:HG21	2.00	0.42
4:F:217:ARG:NH2	4:F:374:ILE:HA	2.33	0.42
1:A:187:SER:CB	1:A:391:LEU:HD21	2.50	0.42

Continued on next page...

Continued from previous page...

Atom-1	Atom-2	Interatomic distance (Å)	Clash overlap (Å)
1:A:192:HIS:CG	1:A:421:ALA:HA	2.54	0.42
1:A:335:ILE:CG2	1:A:339:ARG:HG3	2.43	0.42
12:C:819:HOH:O	3:E:108:ASN:HB2	2.18	0.42
4:F:191:LEU:HD13	4:F:196:HIS:CD2	2.55	0.42
2:B:158:ARG:CD	9:B:504:MES:H62	2.50	0.42
2:B:172:MET:HG3	2:B:387:LEU:HD11	2.02	0.42
2:D:105:LYS:HB3	2:D:110:GLU:HG2	2.01	0.42
3:E:120:LEU:O	3:E:124:GLN:HG3	2.20	0.42
2:D:2:ARG:HB3	2:D:133:GLN:CG	2.50	0.42
2:D:248:LEU:HD11	2:D:352:LYS:HB3	2.01	0.42
1:A:320:ARG:HA	1:A:356:ASN:O	2.20	0.42
2:B:32:PRO:HA	2:B:83:PHE:CD2	2.55	0.42
1:C:151:SER:HB2	1:C:193:THR:HG22	2.02	0.41
1:C:233:GLN:HG3	1:C:368:LEU:CD1	2.50	0.41
2:D:165:ILE:HG21	2:D:252:LEU:HB3	2.02	0.41
1:A:31:GLN:HB2	1:A:33:ASP:OD1	2.19	0.41
2:B:9:ALA:HA	2:B:68:VAL:O	2.20	0.41
4:F:242:ASN:HD22	4:F:245:ILE:CD1	2.32	0.41
1:A:21:TRP:CH2	1:A:63:PRO:HB3	2.55	0.41
2:D:88:ARG:NH1	2:D:90:ASP:HB2	2.35	0.41
4:F:98:TYR:HE1	4:F:130:VAL:HG12	1.85	0.41
4:F:3:THR:OG1	4:F:37:PHE:HA	2.19	0.41
2:B:42:LEU:HD12	2:B:42:LEU:N	2.35	0.41
2:B:287:THR:OG1	2:B:290:GLU:HG3	2.20	0.41
1:C:172:TYR:HB3	1:C:205:ASP:HA	2.03	0.41
4:F:104:ASN:ND2	4:F:105:LEU:HD12	2.36	0.41
2:D:67:LEU:N	2:D:67:LEU:HD12	2.35	0.41
4:F:178:GLN:NE2	4:F:180:HIS:HE1	2.19	0.41
1:A:101:ASN:ND2	1:A:180:ALA:HB2	2.36	0.41
2:B:57:THR:HG22	2:B:58:GLY:N	2.36	0.41
2:B:215:ARG:O	2:B:218:LYS:NZ	2.47	0.41
1:A:141:PHE:CE1	1:A:170:SER:HB3	2.56	0.41
1:A:167:LEU:HD12	1:A:167:LEU:N	2.36	0.41
1:A:188:ILE:HD12	1:A:395:PHE:CB	2.51	0.41
2:B:305:CYS:O	2:B:307:PRO:HD3	2.20	0.41
1:C:351:PHE:N	1:C:351:PHE:CD1	2.88	0.41
2:D:46:LEU:HA	2:D:49:ILE:HB	2.03	0.41
3:E:53:LYS:NZ	3:E:53:LYS:HA	2.36	0.41
4:F:102:PRO:HB2	4:F:104:ASN:OD1	2.20	0.41
4:F:189:PRO:HA	4:F:322:ASP:HA	2.03	0.41
4:F:217:ARG:HG3	4:F:218:GLU:HG2	2.02	0.41

Continued on next page...

Continued from previous page...

Atom-1	Atom-2	Interatomic distance (Å)	Clash overlap (Å)
2:B:291:LEU:HD23	2:B:291:LEU:HA	1.93	0.41
4:F:223:THR:O	4:F:260:ASN:HB3	2.21	0.41
2:B:115:VAL:HG23	2:B:153:LEU:HD23	2.02	0.40
2:B:297:ASP:OD1	2:B:298:SER:N	2.54	0.40
3:E:7:GLU:O	3:E:22:VAL:HA	2.20	0.40
2:D:312:TYR:CE1	2:D:377:PHE:HZ	2.39	0.40
4:F:198:LYS:HG2	4:F:199:PHE:N	2.37	0.40
2:B:347:ILE:HG22	2:B:350:ASN:HB3	2.02	0.40
1:C:363:VAL:HG13	1:C:364:PRO:HD2	2.04	0.40
4:F:151:SER:HB3	4:F:180:HIS:CG	2.56	0.40
2:B:360:PRO:HG3	12:B:688:HOH:O	2.21	0.40
1:C:93:ILE:HG22	1:C:114:ILE:HD11	2.04	0.40
1:C:214:ARG:HG2	1:C:219:ILE:O	2.21	0.40
2:D:382:THR:O	2:D:385:GLN:HG2	2.20	0.40

There are no symmetry-related clashes.

5.3 Torsion angles [i](#)

5.3.1 Protein backbone [i](#)

In the following table, the Percentiles column shows the percent Ramachandran outliers of the chain as a percentile score with respect to all X-ray entries followed by that with respect to entries of similar resolution.

The Analysed column shows the number of residues for which the backbone conformation was analysed, and the total number of residues.

Mol	Chain	Analysed	Favoured	Allowed	Outliers	Percentiles	
1	A	436/451 (97%)	424 (97%)	12 (3%)	0	100	100
1	C	438/451 (97%)	424 (97%)	14 (3%)	0	100	100
2	B	422/445 (95%)	411 (97%)	10 (2%)	1 (0%)	47	58
2	D	422/445 (95%)	411 (97%)	10 (2%)	1 (0%)	47	58
3	E	119/143 (83%)	117 (98%)	2 (2%)	0	100	100
4	F	342/384 (89%)	330 (96%)	12 (4%)	0	100	100
All	All	2179/2319 (94%)	2117 (97%)	60 (3%)	2 (0%)	51	64

All (2) Ramachandran outliers are listed below:

Mol	Chain	Res	Type
2	B	82	PRO
2	D	82	PRO

5.3.2 Protein sidechains [i](#)

In the following table, the Percentiles column shows the percent sidechain outliers of the chain as a percentile score with respect to all X-ray entries followed by that with respect to entries of similar resolution.

The Analysed column shows the number of residues for which the sidechain conformation was analysed, and the total number of residues.

Mol	Chain	Analysed	Rotameric	Outliers	Percentiles
1	A	369/379 (97%)	364 (99%)	5 (1%)	67 81
1	C	371/379 (98%)	368 (99%)	3 (1%)	81 91
2	B	369/383 (96%)	366 (99%)	3 (1%)	81 91
2	D	368/383 (96%)	365 (99%)	3 (1%)	81 91
3	E	110/127 (87%)	110 (100%)	0	100 100
4	F	313/342 (92%)	312 (100%)	1 (0%)	92 97
All	All	1900/1993 (95%)	1885 (99%)	15 (1%)	81 91

All (15) residues with a non-rotameric sidechain are listed below:

Mol	Chain	Res	Type
1	A	71	GLU
1	A	221	ARG
1	A	262	TYR
1	A	316	CYS
1	A	381	THR
2	B	139	HIS
2	B	200	GLU
2	B	286	LEU
1	C	71	GLU
1	C	221	ARG
1	C	381	THR
2	D	139	HIS
2	D	229	HIS
2	D	345	GLU
4	F	310	GLN

Sometimes sidechains can be flipped to improve hydrogen bonding and reduce clashes. All (10)

such sidechains are listed below:

Mol	Chain	Res	Type
1	A	128	GLN
2	B	15	GLN
2	B	294	GLN
4	F	180	HIS
4	F	242	ASN
4	F	269	GLN
4	F	310	GLN
4	F	333	ASN
4	F	348	GLN
4	F	380	HIS

5.3.3 RNA [i](#)

There are no RNA molecules in this entry.

5.4 Non-standard residues in protein, DNA, RNA chains [i](#)

There are no non-standard protein/DNA/RNA residues in this entry.

5.5 Carbohydrates [i](#)

There are no monosaccharides in this entry.

5.6 Ligand geometry [i](#)

Of 16 ligands modelled in this entry, 9 are monoatomic - leaving 7 for Mogul analysis.

In the following table, the Counts columns list the number of bonds (or angles) for which Mogul statistics could be retrieved, the number of bonds (or angles) that are observed in the model and the number of bonds (or angles) that are defined in the Chemical Component Dictionary. The Link column lists molecule types, if any, to which the group is linked. The Z score for a bond length (or angle) is the number of standard deviations the observed value is removed from the expected value. A bond length (or angle) with $|Z| > 2$ is considered an outlier worth inspection. RMSZ is the root-mean-square of all Z scores of the bond lengths (or angles).

Mol	Type	Chain	Res	Link	Bond lengths			Bond angles		
					Counts	RMSZ	$\# Z > 2$	Counts	RMSZ	$\# Z > 2$
8	GDP	B	501	6	24,30,30	0.96	1 (4%)	30,47,47	1.10	3 (10%)
10	X1G	C	601	-	18,18,18	0.80	1 (5%)	23,24,24	1.30	3 (13%)

Mol	Type	Chain	Res	Link	Bond lengths			Bond angles		
					Counts	RMSZ	# Z > 2	Counts	RMSZ	# Z > 2
9	MES	B	504	-	12,12,12	2.25	1 (8%)	14,16,16	2.03	5 (35%)
11	ACP	F	401	6	27,33,33	1.40	5 (18%)	32,52,52	1.41	4 (12%)
5	GTP	A	501	6	26,34,34	1.12	2 (7%)	32,54,54	1.38	6 (18%)
5	GTP	C	602	6	26,34,34	1.10	2 (7%)	32,54,54	1.38	6 (18%)
8	GDP	D	501	6	24,30,30	0.92	1 (4%)	30,47,47	1.13	3 (10%)

In the following table, the Chirals column lists the number of chiral outliers, the number of chiral centers analysed, the number of these observed in the model and the number defined in the Chemical Component Dictionary. Similar counts are reported in the Torsion and Rings columns. '-' means no outliers of that kind were identified.

Mol	Type	Chain	Res	Link	Chirals	Torsions	Rings
8	GDP	B	501	6	-	4/12/32/32	0/3/3/3
10	X1G	C	601	-	-	0/9/15/15	0/2/2/2
9	MES	B	504	-	-	5/6/14/14	0/1/1/1
11	ACP	F	401	6	-	9/15/38/38	0/3/3/3
5	GTP	A	501	6	-	8/18/38/38	0/3/3/3
5	GTP	C	602	6	-	9/18/38/38	0/3/3/3
8	GDP	D	501	6	-	4/12/32/32	0/3/3/3

All (13) bond length outliers are listed below:

Mol	Chain	Res	Type	Atoms	Z	Observed(Å)	Ideal(Å)
9	B	504	MES	C8-S	-7.52	1.66	1.77
5	A	501	GTP	C5-C6	-3.91	1.39	1.47
5	C	602	GTP	C5-C6	-3.88	1.39	1.47
11	F	401	ACP	PG-O2G	2.91	1.61	1.54
11	F	401	ACP	PG-O3G	2.87	1.61	1.54
11	F	401	ACP	PB-O3A	2.83	1.61	1.58
11	F	401	ACP	C5-C4	2.53	1.47	1.40
8	B	501	GDP	C6-N1	-2.46	1.34	1.37
11	F	401	ACP	PB-O2B	2.26	1.61	1.56
10	C	601	X1G	C9-N1	2.22	1.38	1.33
8	D	501	GDP	C6-N1	-2.21	1.34	1.37
5	C	602	GTP	C2-N3	2.07	1.38	1.33
5	A	501	GTP	C2-N3	2.03	1.38	1.33

All (30) bond angle outliers are listed below:

Mol	Chain	Res	Type	Atoms	Z	Observed(°)	Ideal(°)
9	B	504	MES	C5-N4-C3	4.50	118.96	108.83
11	F	401	ACP	PB-O3A-PA	-3.88	120.27	132.56
11	F	401	ACP	C3'-C2'-C1'	3.25	105.88	100.98
9	B	504	MES	C6-C5-N4	-3.23	105.21	110.10
11	F	401	ACP	N3-C2-N1	-3.17	123.73	128.68
5	C	602	GTP	C8-N7-C5	3.10	108.89	102.99
5	A	501	GTP	C5-C6-N1	3.06	119.36	113.95
5	A	501	GTP	PA-O3A-PB	-3.05	122.35	132.83
5	A	501	GTP	C8-N7-C5	3.04	108.78	102.99
5	C	602	GTP	C5-C6-N1	2.98	119.22	113.95
5	C	602	GTP	PA-O3A-PB	-2.92	122.79	132.83
8	D	501	GDP	PA-O3A-PB	-2.87	122.97	132.83
5	A	501	GTP	C2-N1-C6	-2.72	120.08	125.10
8	B	501	GDP	PA-O3A-PB	-2.72	123.48	132.83
5	C	602	GTP	C2-N1-C6	-2.70	120.13	125.10
11	F	401	ACP	C4-C5-N7	-2.60	106.69	109.40
5	C	602	GTP	PB-O3B-PG	-2.55	124.08	132.83
8	D	501	GDP	C8-N7-C5	2.42	107.59	102.99
8	B	501	GDP	C5-C6-N1	2.40	118.19	113.95
9	B	504	MES	O3S-S-C8	2.40	109.64	105.77
8	B	501	GDP	C8-N7-C5	2.34	107.44	102.99
5	A	501	GTP	PB-O3B-PG	-2.28	125.00	132.83
9	B	504	MES	O2S-S-C8	2.27	109.65	106.92
8	D	501	GDP	C5-C6-N1	2.26	117.94	113.95
10	C	601	X1G	C2-C8-N1	-2.20	108.34	113.05
10	C	601	X1G	C7-O2-C6	-2.17	102.52	105.34
10	C	601	X1G	C3-C2-C1	2.14	121.54	118.54
9	B	504	MES	C7-N4-C5	2.07	116.54	111.23
5	A	501	GTP	O6-C6-C5	-2.05	120.37	124.37
5	C	602	GTP	O6-C6-C5	-2.03	120.41	124.37

There are no chirality outliers.

All (39) torsion outliers are listed below:

Mol	Chain	Res	Type	Atoms
5	A	501	GTP	C5'-O5'-PA-O1A
5	A	501	GTP	C5'-O5'-PA-O2A
5	C	602	GTP	C5'-O5'-PA-O1A
5	C	602	GTP	C5'-O5'-PA-O2A
8	B	501	GDP	C5'-O5'-PA-O1A
8	B	501	GDP	C5'-O5'-PA-O2A
8	D	501	GDP	C5'-O5'-PA-O3A
8	D	501	GDP	C5'-O5'-PA-O1A

Continued on next page...

Continued from previous page...

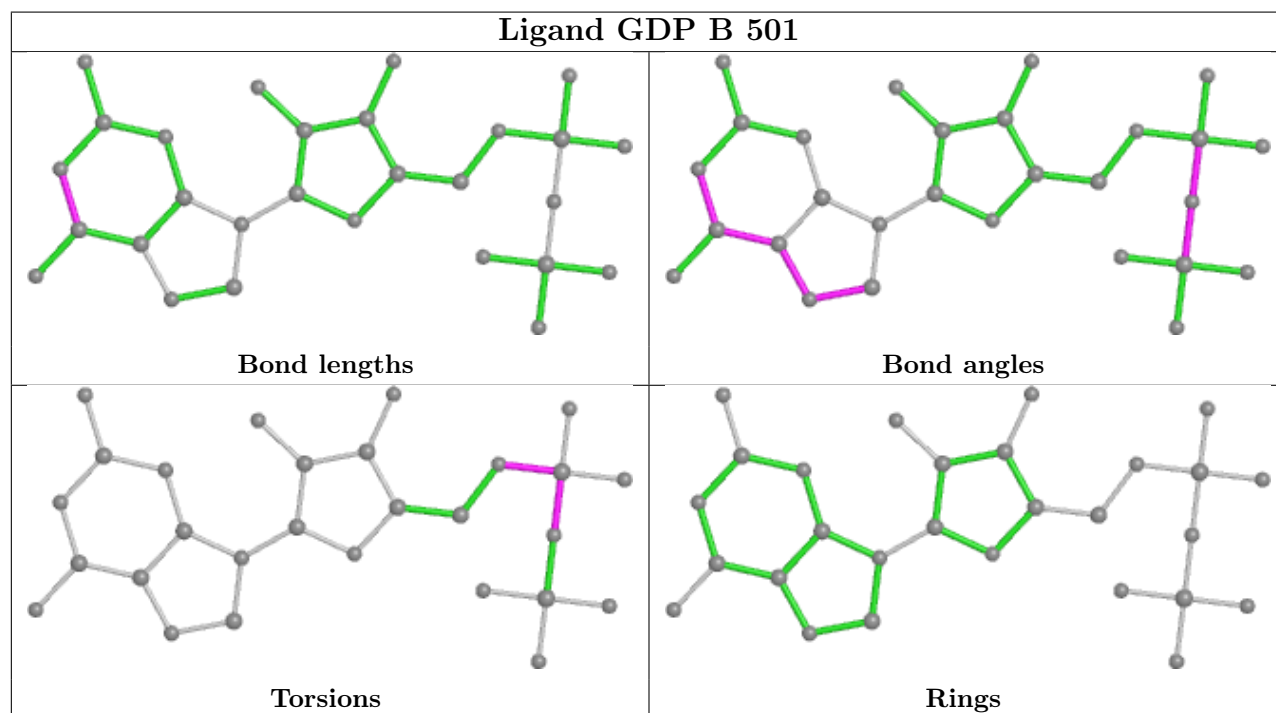
Mol	Chain	Res	Type	Atoms
8	D	501	GDP	C5'-O5'-PA-O2A
9	B	504	MES	C8-C7-N4-C3
9	B	504	MES	C8-C7-N4-C5
9	B	504	MES	C7-C8-S-O2S
9	B	504	MES	C7-C8-S-O3S
11	F	401	ACP	PB-C3B-PG-O1G
11	F	401	ACP	PB-C3B-PG-O2G
11	F	401	ACP	PB-C3B-PG-O3G
11	F	401	ACP	PG-C3B-PB-O1B
11	F	401	ACP	PG-C3B-PB-O3A
11	F	401	ACP	O4'-C4'-C5'-O5'
11	F	401	ACP	C3'-C4'-C5'-O5'
5	C	602	GTP	PB-O3B-PG-O1G
8	D	501	GDP	PA-O3A-PB-O3B
9	B	504	MES	C7-C8-S-O1S
5	A	501	GTP	PB-O3B-PG-O1G
5	A	501	GTP	C4'-C5'-O5'-PA
5	C	602	GTP	PB-O3A-PA-O2A
5	A	501	GTP	PB-O3B-PG-O2G
5	A	501	GTP	PB-O3B-PG-O3G
5	C	602	GTP	PB-O3B-PG-O2G
5	C	602	GTP	PB-O3B-PG-O3G
11	F	401	ACP	PB-O3A-PA-O2A
5	A	501	GTP	C5'-O5'-PA-O3A
5	C	602	GTP	C5'-O5'-PA-O3A
8	B	501	GDP	C5'-O5'-PA-O3A
5	A	501	GTP	PB-O3A-PA-O2A
5	C	602	GTP	PB-O3A-PA-O1A
8	B	501	GDP	PB-O3A-PA-O2A
5	C	602	GTP	C4'-C5'-O5'-PA
11	F	401	ACP	C5'-O5'-PA-O1A

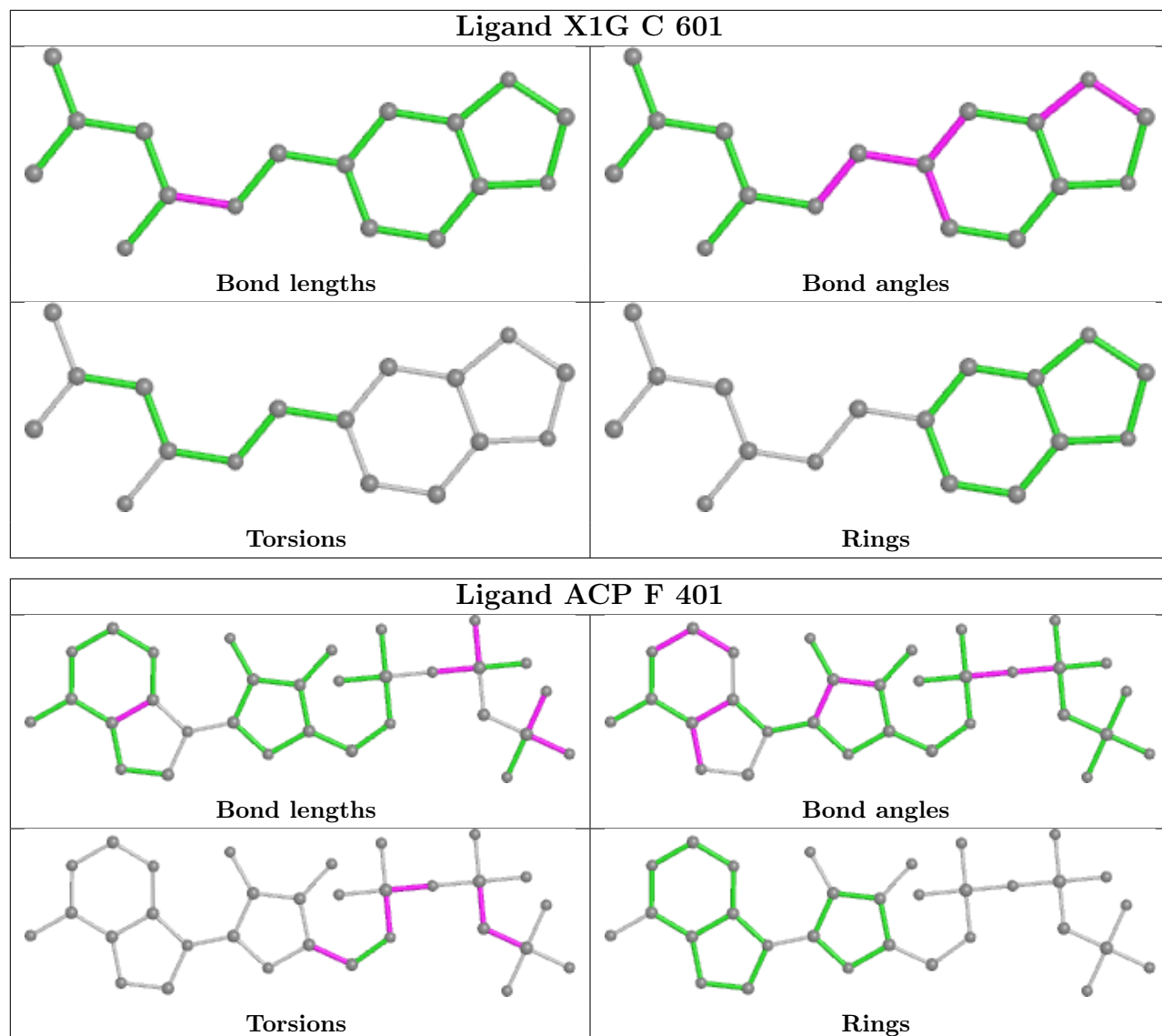
There are no ring outliers.

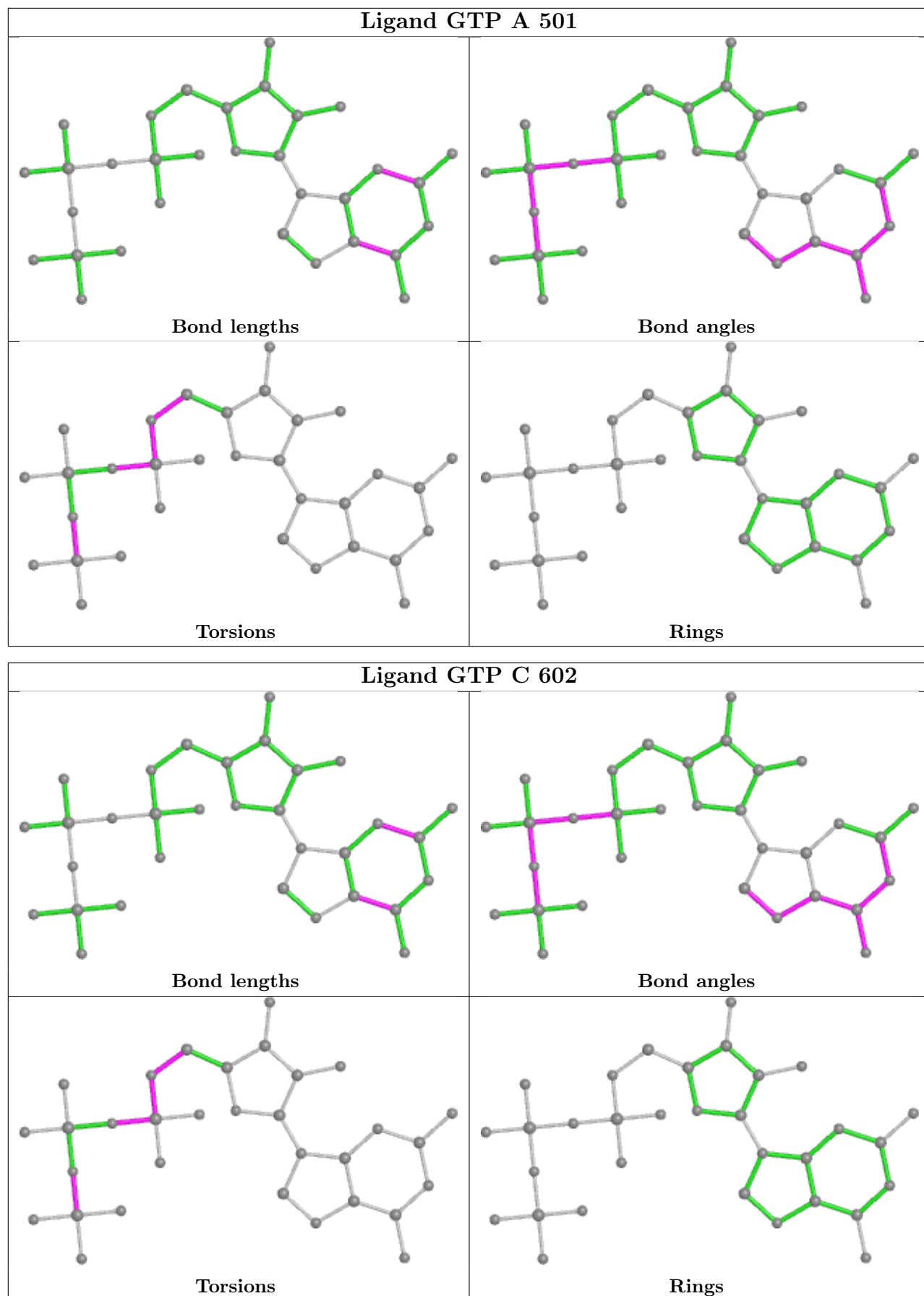
5 monomers are involved in 14 short contacts:

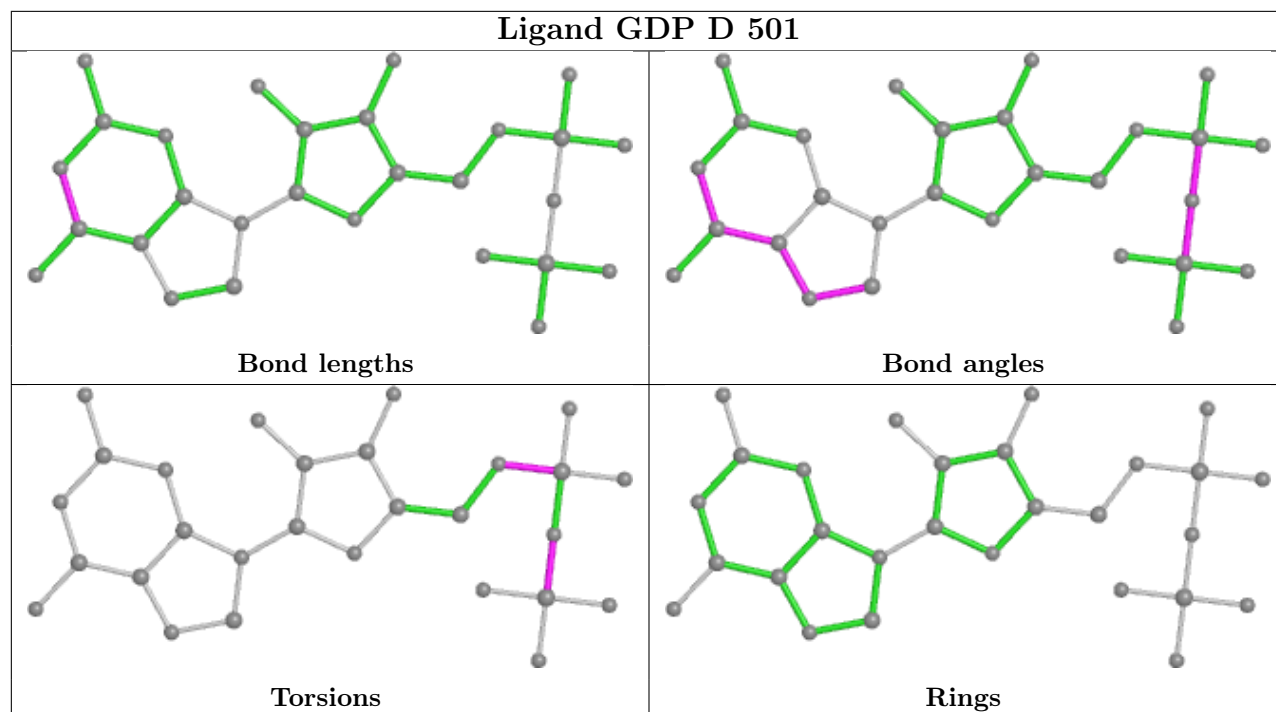
Mol	Chain	Res	Type	Clashes	Symm-Clashes
8	B	501	GDP	1	0
9	B	504	MES	6	0
11	F	401	ACP	4	0
5	A	501	GTP	1	0
8	D	501	GDP	2	0

The following is a two-dimensional graphical depiction of Mogul quality analysis of bond lengths, bond angles, torsion angles, and ring geometry for all instances of the Ligand of Interest. In addition, ligands with molecular weight > 250 and outliers as shown on the validation Tables will also be included. For torsion angles, if less than 5% of the Mogul distribution of torsion angles is within 10 degrees of the torsion angle in question, then that torsion angle is considered an outlier. Any bond that is central to one or more torsion angles identified as an outlier by Mogul will be highlighted in the graph. For rings, the root-mean-square deviation (RMSD) between the ring in question and similar rings identified by Mogul is calculated over all ring torsion angles. If the average RMSD is greater than 60 degrees and the minimal RMSD between the ring in question and any Mogul-identified rings is also greater than 60 degrees, then that ring is considered an outlier. The outliers are highlighted in purple. The color gray indicates Mogul did not find sufficient equivalents in the CSD to analyse the geometry.









5.7 Other polymers [i](#)

There are no such residues in this entry.

5.8 Polymer linkage issues [i](#)

There are no chain breaks in this entry.

6 Fit of model and data

6.1 Protein, DNA and RNA chains

In the following table, the column labelled ‘#RSRZ > 2’ contains the number (and percentage) of RSRZ outliers, followed by percent RSRZ outliers for the chain as percentile scores relative to all X-ray entries and entries of similar resolution. The OWAB column contains the minimum, median, 95th percentile and maximum values of the occupancy-weighted average B-factor per residue. The column labelled ‘Q < 0.9’ lists the number of (and percentage) of residues with an average occupancy less than 0.9.

Mol	Chain	Analysed	<RSRZ>	#RSRZ>2	OWAB(Å ²)	Q<0.9
1	A	438/451 (97%)	0.29	19 (4%) 35 42	44, 62, 100, 171	0
1	C	440/451 (97%)	0.32	14 (3%) 47 54	36, 50, 73, 119	0
2	B	426/445 (95%)	0.44	16 (3%) 40 47	37, 62, 108, 144	2 (0%)
2	D	426/445 (95%)	0.29	15 (3%) 44 51	44, 66, 100, 141	5 (1%)
3	E	123/143 (86%)	0.64	8 (6%) 18 24	51, 71, 114, 139	0
4	F	350/384 (91%)	0.23	12 (3%) 45 52	56, 90, 155, 180	0
All	All	2203/2319 (94%)	0.33	84 (3%) 40 47	36, 64, 118, 180	7 (0%)

All (84) RSRZ outliers are listed below:

Mol	Chain	Res	Type	RSRZ
1	A	282	TYR	10.0
2	B	438	ALA	7.7
3	E	27	PRO	7.6
3	E	6	MET	7.3
2	B	248	LEU	6.7
2	D	277	SER	6.5
3	E	26	PRO	6.4
3	E	24	LEU	5.8
2	D	276	THR	5.3
3	E	25	LYS	4.8
3	E	28	SER	4.7
2	D	286	LEU	4.6
2	D	280	SER	4.4
4	F	89	GLU	4.4
2	B	276	THR	4.2
4	F	105	LEU	4.1
2	B	281	GLN	4.0
3	E	22	VAL	3.8
1	C	340	SER	3.8

Continued on next page...

Continued from previous page...

Mol	Chain	Res	Type	RSRZ
1	A	340	SER	3.7
2	B	1	MET	3.7
1	A	346	TRP	3.5
2	D	215	ARG	3.5
4	F	173	ILE	3.4
1	A	348	PRO	3.4
2	D	275	LEU	3.3
1	A	283	HIS	3.3
2	D	1	MET	3.2
2	B	437	ASP	3.1
4	F	142	ARG	3.0
4	F	90	SER	3.0
2	D	293	GLN	3.0
1	C	440	VAL	2.9
1	A	262	TYR	2.9
2	B	285	ALA	2.9
1	C	286	LEU	2.7
2	D	247	GLN	2.7
2	B	284	ARG	2.7
4	F	379	HIS	2.7
1	C	218	ASP	2.7
1	C	336	LYS	2.7
1	A	179	THR	2.7
1	A	351	PHE	2.6
2	B	333	LEU	2.6
4	F	259	GLY	2.6
1	C	308	ARG	2.6
1	C	302	MET	2.6
2	B	337	ASN	2.6
1	A	345	ASP	2.5
1	C	283	HIS	2.5
1	C	335	ILE	2.5
2	D	218	LYS	2.5
2	D	400	ARG	2.5
2	B	303	ALA	2.5
1	A	77	GLU	2.5
4	F	130	VAL	2.4
1	A	332	ILE	2.4
1	C	368	LEU	2.4
1	A	335	ILE	2.4
4	F	143	GLU	2.4
2	B	59	ASN	2.3

Continued on next page...

Continued from previous page...

Mol	Chain	Res	Type	RSRZ
2	D	404	PHE	2.3
1	C	276	ILE	2.3
4	F	131	PHE	2.3
4	F	372	THR	2.2
2	B	229	HIS	2.2
2	B	336	GLN	2.2
2	B	82	PRO	2.2
1	C	275	VAL	2.2
1	A	337	THR	2.1
1	A	339	ARG	2.1
2	B	318	ILE	2.1
1	A	78	VAL	2.1
2	D	216	THR	2.1
1	A	370	LYS	2.1
1	A	285	GLN	2.1
4	F	134	ALA	2.1
2	D	373	MET	2.0
1	A	349	THR	2.0
1	A	372	GLN	2.0
1	C	282	TYR	2.0
2	D	401	ARG	2.0
1	C	350	GLY	2.0
3	E	75	LYS	2.0

6.2 Non-standard residues in protein, DNA, RNA chains [i](#)

There are no non-standard protein/DNA/RNA residues in this entry.

6.3 Carbohydrates [i](#)

There are no monosaccharides in this entry.

6.4 Ligands [i](#)

In the following table, the Atoms column lists the number of modelled atoms in the group and the number defined in the chemical component dictionary. The B-factors column lists the minimum, median, 95th percentile and maximum values of B factors of atoms in the group. The column labelled 'Q< 0.9' lists the number of atoms with occupancy less than 0.9.

Continued on next page...

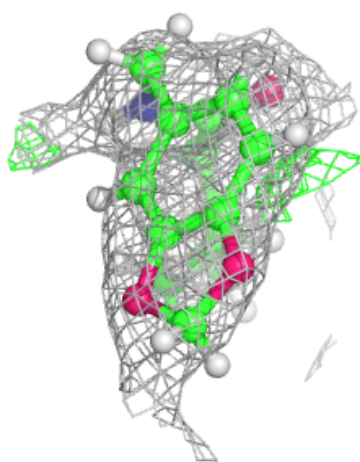
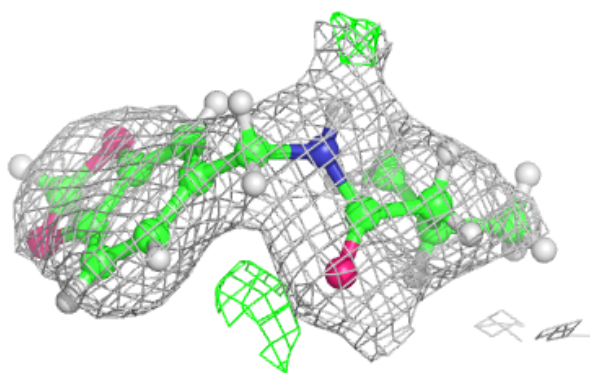
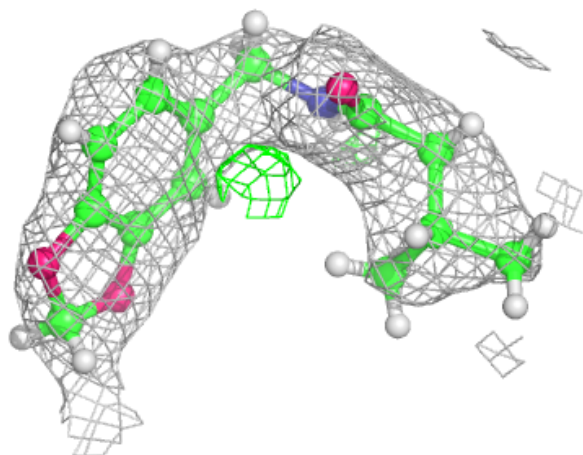
Continued from previous page...

Mol	Type	Chain	Res	Atoms	RSCC	RSR	B-factors(Å ²)	Q<0.9
9	MES	B	504	12/12	0.87	0.26	62,72,83,84	0
10	X1G	C	601	17/17	0.87	0.20	45,56,70,70	34
6	MG	D	502	1/1	0.89	0.14	69,69,69,69	0
7	CA	E	201	1/1	0.91	0.08	95,95,95,95	0
11	ACP	F	401	31/31	0.92	0.11	89,105,115,118	0
7	CA	B	503	1/1	0.93	0.11	98,98,98,98	0
7	CA	A	503	1/1	0.94	0.09	84,84,84,84	0
6	MG	C	603	1/1	0.94	0.16	44,44,44,44	0
6	MG	B	502	1/1	0.94	0.20	39,39,39,39	0
6	MG	F	402	1/1	0.95	0.20	97,97,97,97	0
8	GDP	D	501	28/28	0.96	0.16	55,62,68,75	0
6	MG	A	502	1/1	0.96	0.13	44,44,44,44	0
5	GTP	A	501	32/32	0.98	0.16	42,47,52,55	0
7	CA	C	604	1/1	0.98	0.11	59,59,59,59	0
5	GTP	C	602	32/32	0.98	0.16	34,41,44,48	0
8	GDP	B	501	28/28	0.98	0.14	38,44,50,51	0

The following is a graphical depiction of the model fit to experimental electron density of all instances of the Ligand of Interest. In addition, ligands with molecular weight > 250 and outliers as shown on the geometry validation Tables will also be included. Each fit is shown from different orientation to approximate a three-dimensional view.

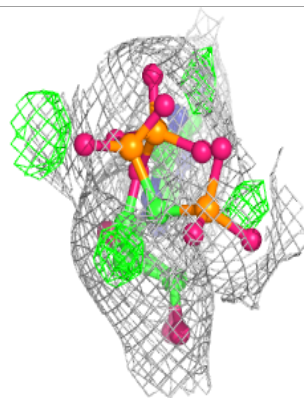
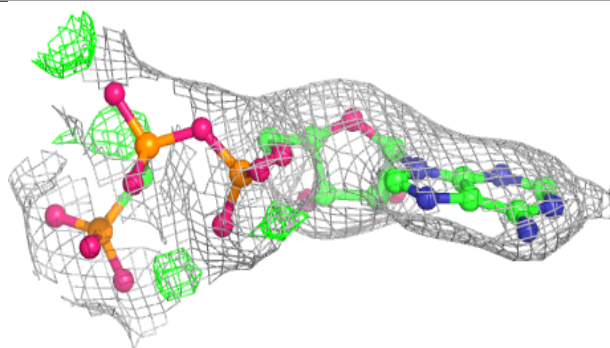
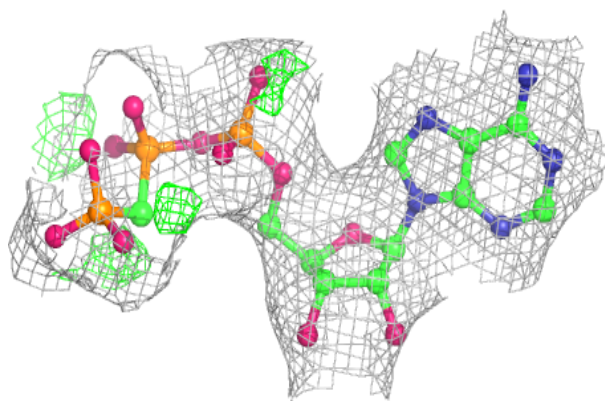
Electron density around X1G C 601:

$2mF_o-DF_c$ (at 0.7 rmsd) in gray
 mF_o-DF_c (at 3 rmsd) in purple (negative)
and green (positive)

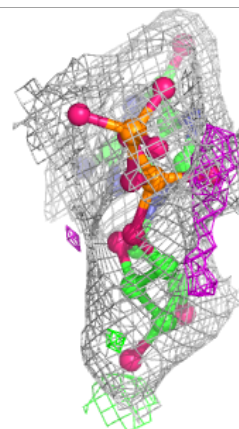
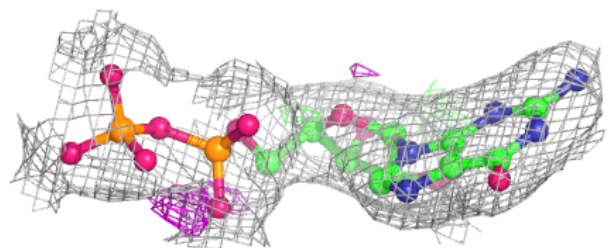
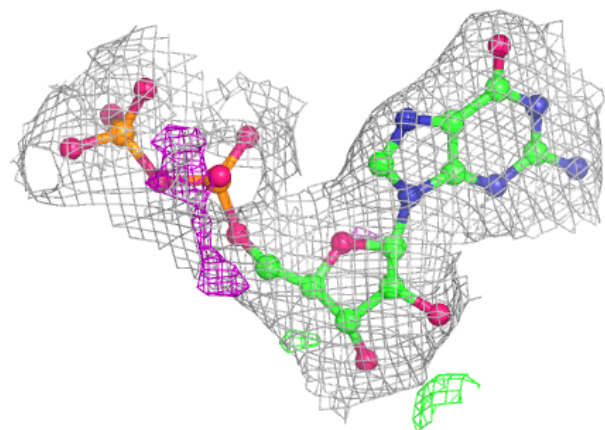


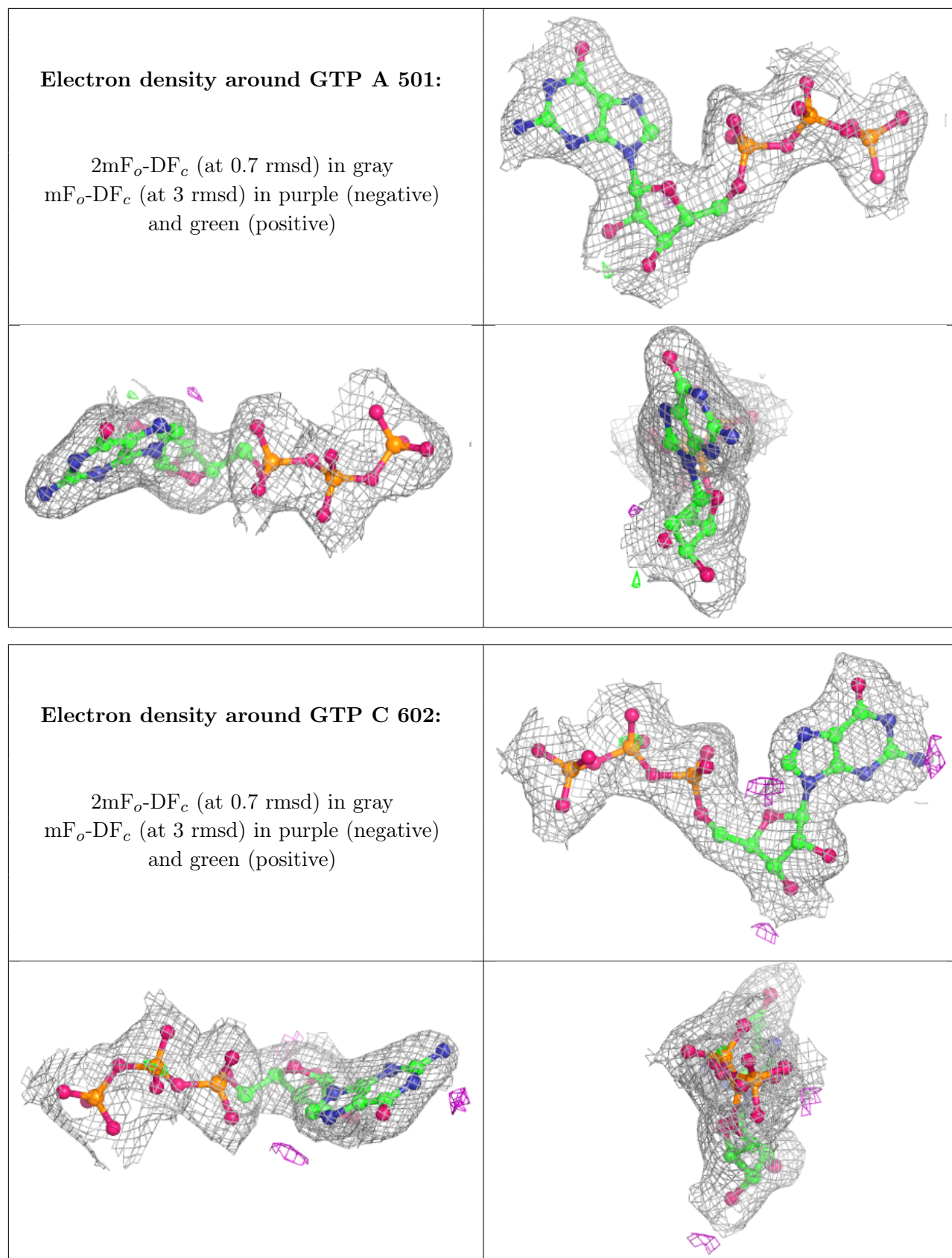
Electron density around ACP F 401:

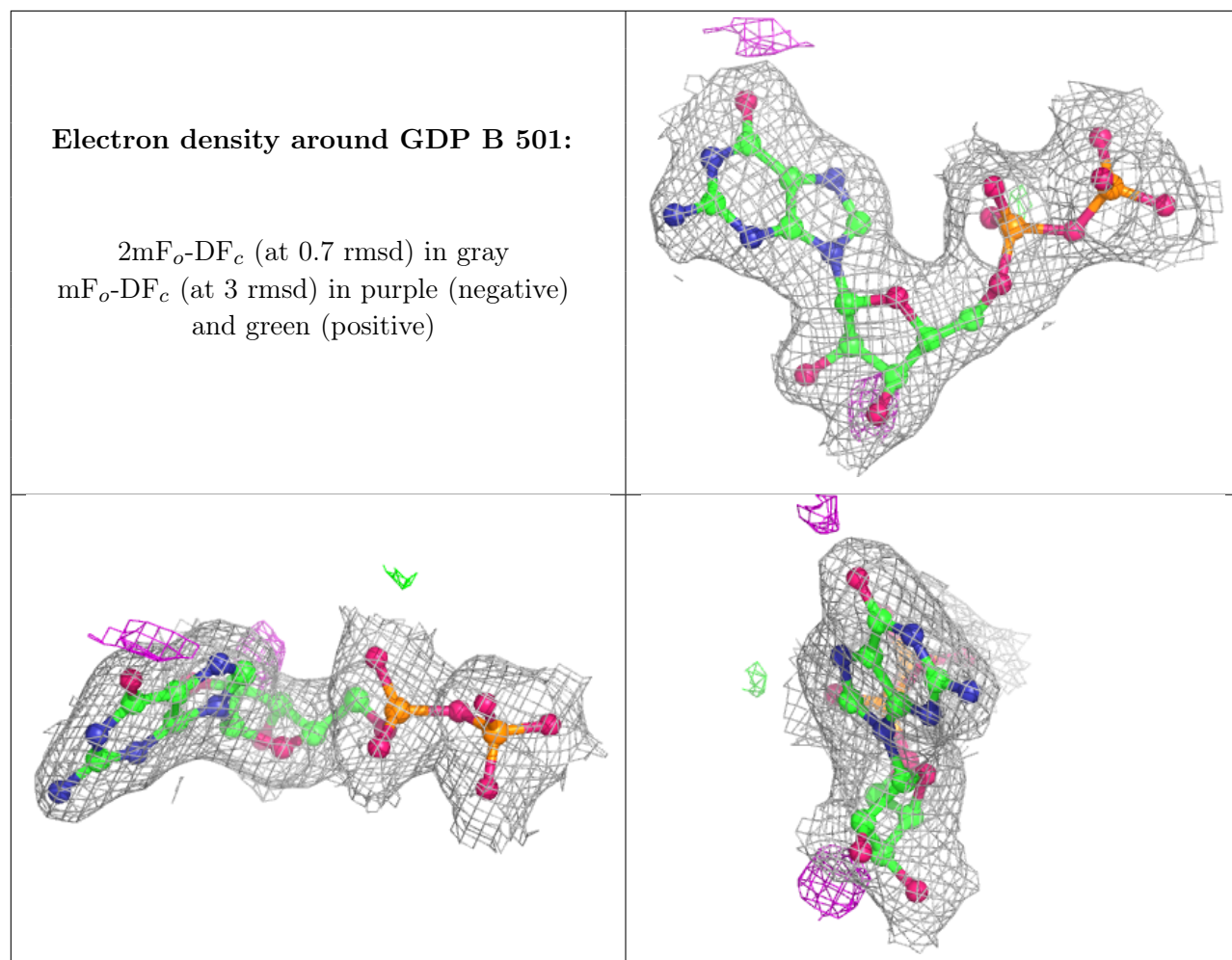
$2mF_o-DF_c$ (at 0.7 rmsd) in gray
 mF_o-DF_c (at 3 rmsd) in purple (negative)
and green (positive)

**Electron density around GDP D 501:**

$2mF_o-DF_c$ (at 0.7 rmsd) in gray
 mF_o-DF_c (at 3 rmsd) in purple (negative)
and green (positive)







6.5 Other polymers [i](#)

There are no such residues in this entry.