



# Full wwPDB X-ray Structure Validation Report ⓘ

Aug 7, 2023 – 11:18 AM EDT

PDB ID : 8S93  
Title : Crystal structure of the PH-TH/kinase complex of Bruton's tyrosine kinase  
Authors : Lin, D.Y.; Andreotti, A.H.  
Deposited on : 2023-03-27  
Resolution : 2.10 Å(reported)

This is a Full wwPDB X-ray Structure Validation Report for a publicly released PDB entry.

We welcome your comments at [validation@mail.wwpdb.org](mailto:validation@mail.wwpdb.org)

A user guide is available at

<https://www.wwpdb.org/validation/2017/XrayValidationReportHelp>

with specific help available everywhere you see the ⓘ symbol.

The types of validation reports are described at

<http://www.wwpdb.org/validation/2017/FAQs#types>.

---

The following versions of software and data (see [references ⓘ](#)) were used in the production of this report:

MolProbity : 4.02b-467  
Mogul : 1.8.5 (274361), CSD as541be (2020)  
Xtriage (Phenix) : 1.13  
EDS : 2.35  
buster-report : 1.1.7 (2018)  
Percentile statistics : 20191225.v01 (using entries in the PDB archive December 25th 2019)  
Refmac : 5.8.0158  
CCP4 : 7.0.044 (Gargrove)  
Ideal geometry (proteins) : Engh & Huber (2001)  
Ideal geometry (DNA, RNA) : Parkinson et al. (1996)  
Validation Pipeline (wwPDB-VP) : 2.35

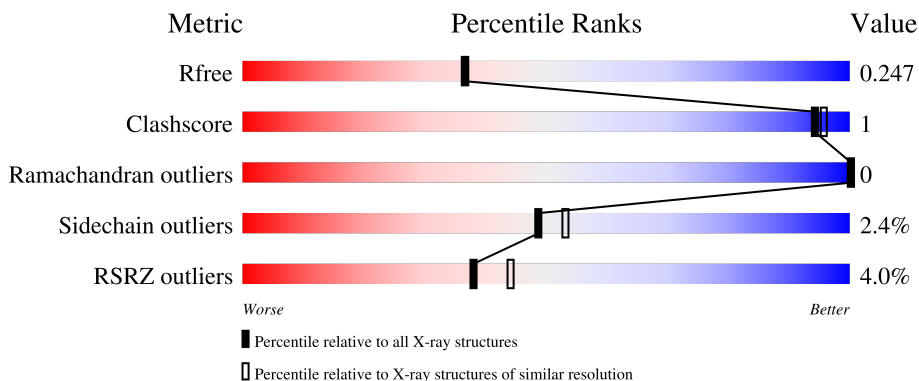
# 1 Overall quality at a glance

The following experimental techniques were used to determine the structure:

*X-RAY DIFFRACTION*

The reported resolution of this entry is 2.10 Å.

Percentile scores (ranging between 0-100) for global validation metrics of the entry are shown in the following graphic. The table shows the number of entries on which the scores are based.



Metric	Whole archive (#Entries)	Similar resolution (#Entries, resolution range(Å))
$R_{free}$	130704	5197 (2.10-2.10)
Clashscore	141614	5710 (2.10-2.10)
Ramachandran outliers	138981	5647 (2.10-2.10)
Sidechain outliers	138945	5648 (2.10-2.10)
RSRZ outliers	127900	5083 (2.10-2.10)

The table below summarises the geometric issues observed across the polymeric chains and their fit to the electron density. The red, orange, yellow and green segments of the lower bar indicate the fraction of residues that contain outliers for  $\geq 3$ , 2, 1 and 0 types of geometric quality criteria respectively. A grey segment represents the fraction of residues that are not modelled. The numeric value for each fraction is indicated below the corresponding segment, with a dot representing fractions  $\leq 5\%$ . The upper red bar (where present) indicates the fraction of residues that have poor fit to the electron density. The numeric value is given above the bar.

Mol	Chain	Length	Quality of chain
1	A	457	

## 2 Entry composition

There are 5 unique types of molecules in this entry. The entry contains 7273 atoms, of which 3514 are hydrogens and 0 are deuteriums.

In the tables below, the ZeroOcc column contains the number of atoms modelled with zero occupancy, the AltConf column contains the number of residues with at least one atom in alternate conformation and the Trace column contains the number of residues modelled with at most 2 atoms.

- Molecule 1 is a protein called Tyrosine-protein kinase BTK.

Mol	Chain	Residues	Atoms						ZeroOcc	AltConf	Trace
			Total	C	H	N	O	S			
1	A	429	6987	2256	3462	606	635	28	0	11	0

There are 34 discrepancies between the modelled and reference sequences:

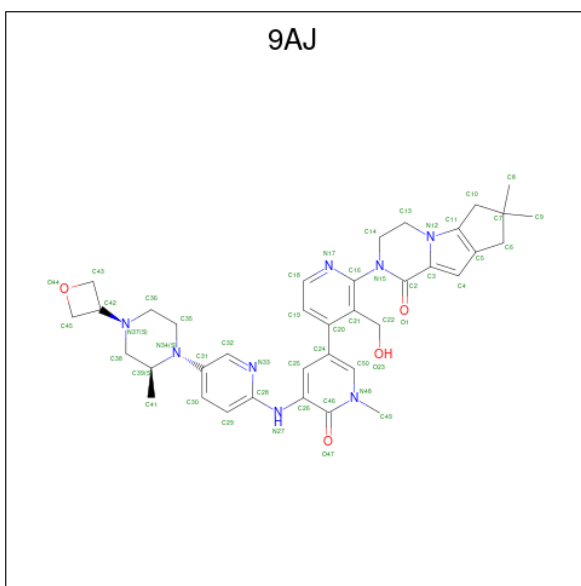
Chain	Residue	Modelled	Actual	Comment	Reference
A	91	ALA	GLN	engineered mutation	UNP P35991
A	92	ALA	ILE	engineered mutation	UNP P35991
A	94	ALA	ILE	engineered mutation	UNP P35991
A	95	ALA	ILE	engineered mutation	UNP P35991
A	172	GLY	-	linker	UNP P35991
A	173	GLY	-	linker	UNP P35991
A	174	GLY	-	linker	UNP P35991
A	175	SER	-	linker	UNP P35991
A	378	GLY	-	linker	UNP P35991
A	379	GLY	-	linker	UNP P35991
A	380	GLY	-	linker	UNP P35991
A	381	GLY	-	linker	UNP P35991
A	382	SER	-	linker	UNP P35991
A	383	GLY	-	linker	UNP P35991
A	384	GLY	-	linker	UNP P35991
A	385	GLY	-	linker	UNP P35991
A	386	GLY	-	linker	UNP P35991
A	387	SER	-	linker	UNP P35991
A	388	GLY	-	linker	UNP P35991
A	389	GLY	-	linker	UNP P35991
A	390	GLY	-	linker	UNP P35991
A	391	GLY	-	linker	UNP P35991
A	392	SER	-	linker	UNP P35991
A	393	GLY	-	linker	UNP P35991
A	394	GLY	-	linker	UNP P35991
A	395	GLY	-	linker	UNP P35991
A	430	ARG	LYS	engineered mutation	UNP P35991

*Continued on next page...*

Continued from previous page...

Chain	Residue	Modelled	Actual	Comment	Reference
A	542	MET	LEU	engineered mutation	UNP P35991
A	543	THR	SER	engineered mutation	UNP P35991
A	555	THR	VAL	engineered mutation	UNP P35991
A	562	LYS	ARG	engineered mutation	UNP P35991
A	564	ALA	SER	engineered mutation	UNP P35991
A	565	SER	PRO	engineered mutation	UNP P35991
A	617	PRO	TYR	engineered mutation	UNP P35991

- Molecule 2 is 2-[3'-(hydroxymethyl)-1-methyl-5-({5-[(2S)-2-methyl-4-(oxetan-3-yl)piperazin-1-yl]pyridin-2-yl}amino)-6-oxo[1,6-dihydro[3,4'-bipyridine]]-2'-yl]-7,7-dimethyl-3,4,7,8-tetrahydro-2H-cyclopenta[4,5]pyrrolo[1,2-a]pyrazin-1(6H)-one (three-letter code: 9AJ) (formula: C<sub>37</sub>H<sub>44</sub>N<sub>8</sub>O<sub>4</sub>) (labeled as "Ligand of Interest" by depositor).



Mol	Chain	Residues	Atoms				ZeroOcc	AltConf	
			Total	C	H	N			O
2	A	1	93	37	44	8	4	0	0

- Molecule 3 is ZINC ION (three-letter code: ZN) (formula: Zn) (labeled as "Ligand of Interest" by depositor).

Mol	Chain	Residues	Atoms	ZeroOcc	AltConf
			Total Zn		
3	A	1	1 1	0	0

- Molecule 4 is GLYCEROL (three-letter code: GOL) (formula: C<sub>3</sub>H<sub>8</sub>O<sub>3</sub>).



Mol	Chain	Residues	Atoms				ZeroOcc	AltConf
			Total	C	H	O		
4	A	1	14	3	8	3	0	0

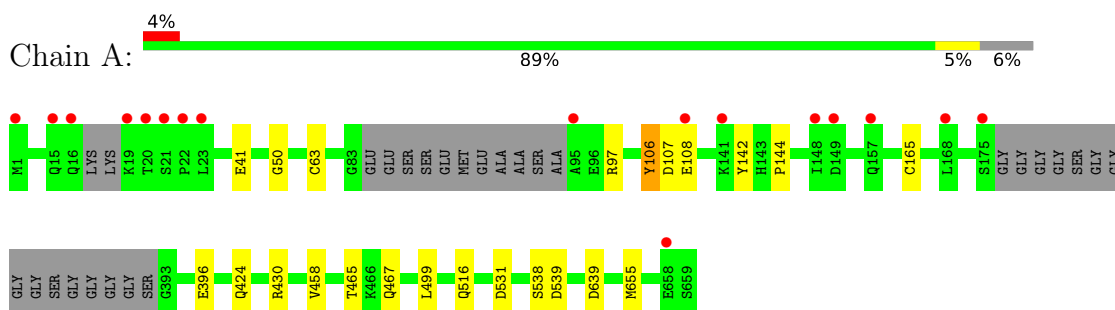
- Molecule 5 is water.

Mol	Chain	Residues	Atoms		ZeroOcc	AltConf
			Total	O		
5	A	178	178	178	0	0

### 3 Residue-property plots [i](#)

These plots are drawn for all protein, RNA, DNA and oligosaccharide chains in the entry. The first graphic for a chain summarises the proportions of the various outlier classes displayed in the second graphic. The second graphic shows the sequence view annotated by issues in geometry and electron density. Residues are color-coded according to the number of geometric quality criteria for which they contain at least one outlier: green = 0, yellow = 1, orange = 2 and red = 3 or more. A red dot above a residue indicates a poor fit to the electron density ( $RSRZ > 2$ ). Stretches of 2 or more consecutive residues without any outlier are shown as a green connector. Residues present in the sample, but not in the model, are shown in grey.

- Molecule 1: Tyrosine-protein kinase BTK



## 4 Data and refinement statistics

Property	Value	Source
Space group	P 1 21 1	Depositor
Cell constants a, b, c, $\alpha$ , $\beta$ , $\gamma$	38.38Å 77.38Å 82.32Å 90.00° 97.98° 90.00°	Depositor
Resolution (Å)	19.71 – 2.10 81.53 – 1.99	Depositor EDS
% Data completeness (in resolution range)	76.8 (19.71-2.10) 61.2 (81.53-1.99)	Depositor EDS
$R_{merge}$	0.13	Depositor
$R_{sym}$	(Not available)	Depositor
$\langle I/\sigma(I) \rangle$ <sup>1</sup>	1.86 (at 1.98Å)	Xtrriage
Refinement program	PHENIX 1.20.1_4487	Depositor
R, $R_{free}$	0.198 , 0.246 0.198 , 0.247	Depositor DCC
$R_{free}$ test set	1098 reflections (5.06%)	wwPDB-VP
Wilson B-factor (Å <sup>2</sup> )	23.5	Xtrriage
Anisotropy	0.082	Xtrriage
Bulk solvent $k_{sol}$ (e/Å <sup>3</sup> ), $B_{sol}$ (Å <sup>2</sup> )	0.40 , 51.5	EDS
L-test for twinning <sup>2</sup>	$\langle  L  \rangle = 0.49$ , $\langle L^2 \rangle = 0.32$	Xtrriage
Estimated twinning fraction	No twinning to report.	Xtrriage
$F_o, F_c$ correlation	0.93	EDS
Total number of atoms	7273	wwPDB-VP
Average B, all atoms (Å <sup>2</sup> )	43.0	wwPDB-VP

Xtrriage's analysis on translational NCS is as follows: *The largest off-origin peak in the Patterson function is 5.97% of the height of the origin peak. No significant pseudotranslation is detected.*

<sup>1</sup>Intensities estimated from amplitudes.

<sup>2</sup>Theoretical values of  $\langle |L| \rangle$ ,  $\langle L^2 \rangle$  for acentric reflections are 0.5, 0.333 respectively for untwinned datasets, and 0.375, 0.2 for perfectly twinned datasets.

## 5 Model quality [i](#)

### 5.1 Standard geometry [i](#)

Bond lengths and bond angles in the following residue types are not validated in this section: ZN, GOL, 9AJ

The Z score for a bond length (or angle) is the number of standard deviations the observed value is removed from the expected value. A bond length (or angle) with  $|Z| > 5$  is considered an outlier worth inspection. RMSZ is the root-mean-square of all Z scores of the bond lengths (or angles).

Mol	Chain	Bond lengths		Bond angles	
		RMSZ	# Z  >5	RMSZ	# Z  >5
1	A	0.24	0/3649	0.48	0/4915

There are no bond length outliers.

There are no bond angle outliers.

There are no chirality outliers.

There are no planarity outliers.

### 5.2 Too-close contacts [i](#)

In the following table, the Non-H and H(model) columns list the number of non-hydrogen atoms and hydrogen atoms in the chain respectively. The H(added) column lists the number of hydrogen atoms added and optimized by MolProbity. The Clashes column lists the number of clashes within the asymmetric unit, whereas Symm-Clashes lists symmetry-related clashes.

Mol	Chain	Non-H	H(model)	H(added)	Clashes	Symm-Clashes
1	A	3525	3462	3470	9	0
2	A	49	44	0	0	0
3	A	1	0	0	0	0
4	A	6	8	8	0	0
5	A	178	0	0	0	0
All	All	3759	3514	3478	9	0

The all-atom clashscore is defined as the number of clashes found per 1000 atoms (including hydrogen atoms). The all-atom clashscore for this structure is 1.

All (9) close contacts within the same asymmetric unit are listed below, sorted by their clash magnitude.



Atom-1	Atom-2	Interatomic distance (Å)	Clash overlap (Å)
1:A:106:TYR:CE2	1:A:108:GLU:HB3	2.26	0.71
1:A:430[B]:ARG:NH1	1:A:539:ASP:OD1	2.32	0.63
1:A:106:TYR:CZ	1:A:108:GLU:HB3	2.46	0.50
1:A:396:GLU:OE1	1:A:465:THR:OG1	2.25	0.47
1:A:41:GLU:O	1:A:50:GLY:N	2.42	0.45
1:A:499:LEU:HD23	1:A:655:MET:HG3	1.98	0.45
1:A:458:VAL:HG21	1:A:538:SER:HB2	2.01	0.43
1:A:144:PRO:HD2	1:A:165:CYS:SG	2.59	0.43
1:A:531:ASP:N	1:A:531:ASP:OD1	2.50	0.42

There are no symmetry-related clashes.

## 5.3 Torsion angles [i](#)

### 5.3.1 Protein backbone [i](#)

In the following table, the Percentiles column shows the percent Ramachandran outliers of the chain as a percentile score with respect to all X-ray entries followed by that with respect to entries of similar resolution.

The Analysed column shows the number of residues for which the backbone conformation was analysed, and the total number of residues.

Mol	Chain	Analysed	Favoured	Allowed	Outliers	Percentiles
1	A	432/457 (94%)	421 (98%)	11 (2%)	0	100   100

There are no Ramachandran outliers to report.

### 5.3.2 Protein sidechains [i](#)

In the following table, the Percentiles column shows the percent sidechain outliers of the chain as a percentile score with respect to all X-ray entries followed by that with respect to entries of similar resolution.

The Analysed column shows the number of residues for which the sidechain conformation was analysed, and the total number of residues.

Mol	Chain	Analysed	Rotameric	Outliers	Percentiles
1	A	384/398 (96%)	374 (97%)	10 (3%)	46   50

All (10) residues with a non-rotameric sidechain are listed below:

Mol	Chain	Res	Type
1	A	63	CYS
1	A	97	ARG
1	A	106	TYR
1	A	107	ASP
1	A	142	TYR
1	A	424[A]	GLN
1	A	424[B]	GLN
1	A	467	GLN
1	A	516	GLN
1	A	639	ASP

Sometimes sidechains can be flipped to improve hydrogen bonding and reduce clashes. All (1) such sidechains are listed below:

Mol	Chain	Res	Type
1	A	479	ASN

### 5.3.3 RNA [i](#)

There are no RNA molecules in this entry.

## 5.4 Non-standard residues in protein, DNA, RNA chains [i](#)

There are no non-standard protein/DNA/RNA residues in this entry.

## 5.5 Carbohydrates [i](#)

There are no monosaccharides in this entry.

## 5.6 Ligand geometry [i](#)

Of 3 ligands modelled in this entry, 1 is monoatomic - leaving 2 for Mogul analysis.

In the following table, the Counts columns list the number of bonds (or angles) for which Mogul statistics could be retrieved, the number of bonds (or angles) that are observed in the model and the number of bonds (or angles) that are defined in the Chemical Component Dictionary. The Link column lists molecule types, if any, to which the group is linked. The Z score for a bond length (or angle) is the number of standard deviations the observed value is removed from the expected value. A bond length (or angle) with  $|Z| > 2$  is considered an outlier worth inspection. RMSZ is the root-mean-square of all Z scores of the bond lengths (or angles).

Mol	Type	Chain	Res	Link	Bond lengths			Bond angles		
					Counts	RMSZ	# Z  > 2	Counts	RMSZ	# Z  > 2
2	9AJ	A	701	-	50,56,56	2.66	18 (36%)	58,85,85	1.70	13 (22%)
4	GOL	A	703	-	5,5,5	0.89	0	5,5,5	0.99	0

In the following table, the Chirals column lists the number of chiral outliers, the number of chiral centers analysed, the number of these observed in the model and the number defined in the Chemical Component Dictionary. Similar counts are reported in the Torsion and Rings columns. '-' means no outliers of that kind were identified.

Mol	Type	Chain	Res	Link	Chirals	Torsions	Rings
2	9AJ	A	701	-	-	7/17/64/64	0/7/8/8
4	GOL	A	703	-	-	0/4/4/4	-

All (18) bond length outliers are listed below:

Mol	Chain	Res	Type	Atoms	Z	Observed(Å)	Ideal(Å)
2	A	701	9AJ	C25-C26	6.52	1.49	1.36
2	A	701	9AJ	C50-C24	6.49	1.52	1.37
2	A	701	9AJ	C46-N48	6.17	1.48	1.39
2	A	701	9AJ	C26-N27	5.31	1.47	1.36
2	A	701	9AJ	C20-C24	5.29	1.54	1.48
2	A	701	9AJ	C50-N48	4.94	1.48	1.36
2	A	701	9AJ	C16-N15	4.58	1.46	1.38
2	A	701	9AJ	C6-C5	3.75	1.55	1.51
2	A	701	9AJ	C43-C42	-3.69	1.45	1.53
2	A	701	9AJ	C10-C11	3.54	1.55	1.49
2	A	701	9AJ	C20-C21	-3.26	1.36	1.40
2	A	701	9AJ	C28-N27	2.87	1.46	1.40
2	A	701	9AJ	C45-C42	-2.83	1.47	1.53
2	A	701	9AJ	C31-N34	2.60	1.47	1.40
2	A	701	9AJ	C19-C20	-2.50	1.35	1.39
2	A	701	9AJ	C25-C24	2.35	1.49	1.42
2	A	701	9AJ	C13-N12	-2.20	1.46	1.49
2	A	701	9AJ	O47-C46	-2.01	1.18	1.23

All (13) bond angle outliers are listed below:

Mol	Chain	Res	Type	Atoms	Z	Observed(°)	Ideal(°)
2	A	701	9AJ	C6-C5-C4	4.63	143.95	132.79
2	A	701	9AJ	C36-N37-C38	4.26	112.39	108.19
2	A	701	9AJ	C7-C6-C5	3.96	107.29	103.77
2	A	701	9AJ	C26-C46-N48	3.58	119.64	116.39
2	A	701	9AJ	C46-C26-N27	3.24	115.33	112.34

*Continued on next page...*

*Continued from previous page...*

Mol	Chain	Res	Type	Atoms	Z	Observed(°)	Ideal(°)
2	A	701	9AJ	C16-N15-C2	-2.82	114.66	120.07
2	A	701	9AJ	C14-C13-N12	2.70	114.57	109.07
2	A	701	9AJ	C19-C18-N17	-2.69	120.61	123.96
2	A	701	9AJ	C50-C24-C25	2.24	119.39	117.38
2	A	701	9AJ	C10-C11-C5	-2.04	108.92	112.55
2	A	701	9AJ	C13-C14-N15	2.04	114.27	110.83
2	A	701	9AJ	C3-C2-N15	2.01	115.22	113.58
2	A	701	9AJ	N27-C28-N33	2.00	121.28	115.06

There are no chirality outliers.

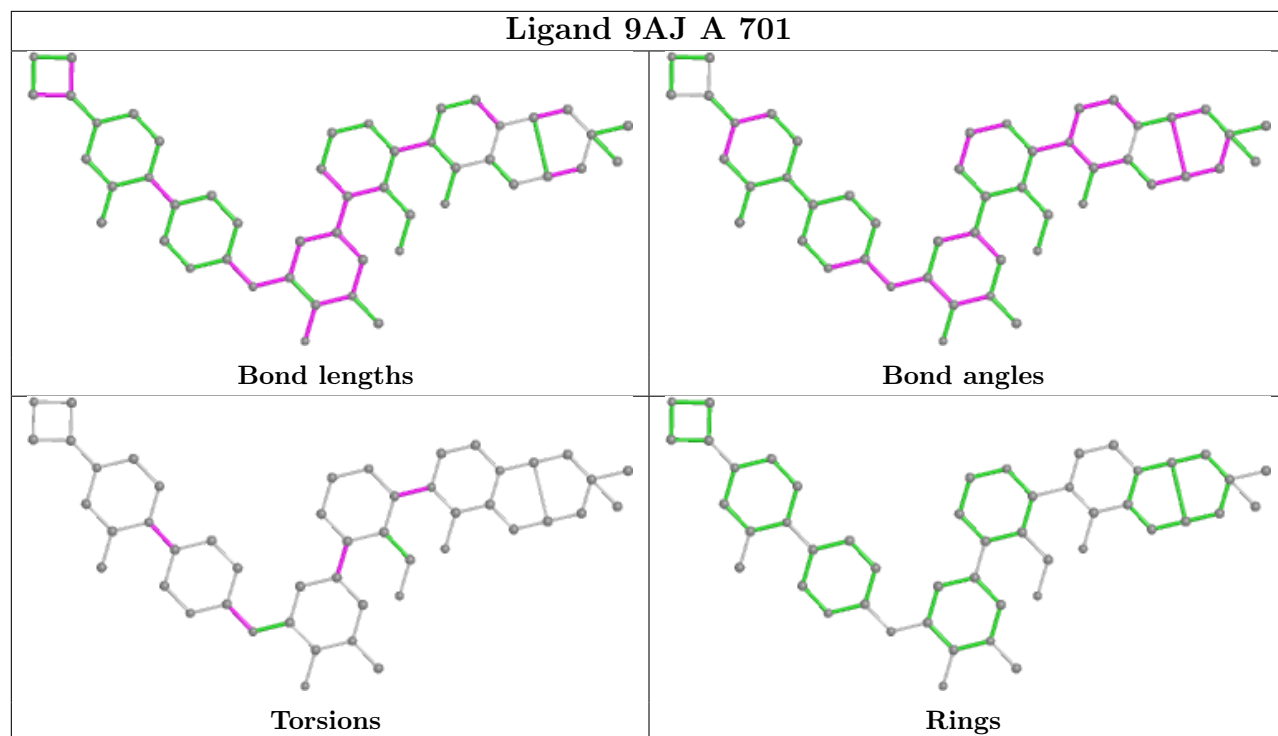
All (7) torsion outliers are listed below:

Mol	Chain	Res	Type	Atoms
2	A	701	9AJ	N17-C16-N15-C14
2	A	701	9AJ	C21-C16-N15-C14
2	A	701	9AJ	C29-C28-N27-C26
2	A	701	9AJ	C32-C31-N34-C35
2	A	701	9AJ	C30-C31-N34-C35
2	A	701	9AJ	N33-C28-N27-C26
2	A	701	9AJ	C21-C20-C24-C25

There are no ring outliers.

No monomer is involved in short contacts.

The following is a two-dimensional graphical depiction of Mogul quality analysis of bond lengths, bond angles, torsion angles, and ring geometry for all instances of the Ligand of Interest. In addition, ligands with molecular weight > 250 and outliers as shown on the validation Tables will also be included. For torsion angles, if less than 5% of the Mogul distribution of torsion angles is within 10 degrees of the torsion angle in question, then that torsion angle is considered an outlier. Any bond that is central to one or more torsion angles identified as an outlier by Mogul will be highlighted in the graph. For rings, the root-mean-square deviation (RMSD) between the ring in question and similar rings identified by Mogul is calculated over all ring torsion angles. If the average RMSD is greater than 60 degrees and the minimal RMSD between the ring in question and any Mogul-identified rings is also greater than 60 degrees, then that ring is considered an outlier. The outliers are highlighted in purple. The color gray indicates Mogul did not find sufficient equivalents in the CSD to analyse the geometry.



## 5.7 Other polymers [i](#)

There are no such residues in this entry.

## 5.8 Polymer linkage issues [i](#)

There are no chain breaks in this entry.

## 6 Fit of model and data [i](#)

### 6.1 Protein, DNA and RNA chains [i](#)

In the following table, the column labelled ‘#RSRZ> 2’ contains the number (and percentage) of RSRZ outliers, followed by percent RSRZ outliers for the chain as percentile scores relative to all X-ray entries and entries of similar resolution. The OWAB column contains the minimum, median, 95<sup>th</sup> percentile and maximum values of the occupancy-weighted average B-factor per residue. The column labelled ‘Q< 0.9’ lists the number of (and percentage) of residues with an average occupancy less than 0.9.

Mol	Chain	Analysed	<RSRZ>	#RSRZ>2	OWAB(Å <sup>2</sup> )	Q<0.9
1	A	429/457 (93%)	0.23	17 (3%) 38 44	18, 36, 75, 99	0

All (17) RSRZ outliers are listed below:

Mol	Chain	Res	Type	RSRZ
1	A	20	THR	4.2
1	A	21	SER	3.5
1	A	148	ILE	3.4
1	A	22	PRO	3.3
1	A	16	GLN	3.1
1	A	108	GLU	2.9
1	A	23	LEU	2.8
1	A	149	ASP	2.7
1	A	658	GLU	2.6
1	A	168	LEU	2.5
1	A	1	MET	2.4
1	A	175	SER	2.4
1	A	157	GLN	2.4
1	A	141	LYS	2.4
1	A	95	ALA	2.2
1	A	19	LYS	2.2
1	A	15	GLN	2.1

### 6.2 Non-standard residues in protein, DNA, RNA chains [i](#)

There are no non-standard protein/DNA/RNA residues in this entry.

### 6.3 Carbohydrates [i](#)

There are no monosaccharides in this entry.

## 6.4 Ligands

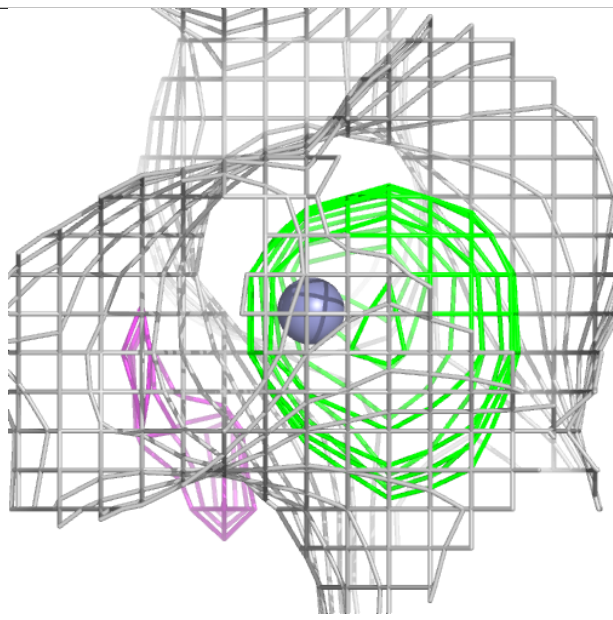
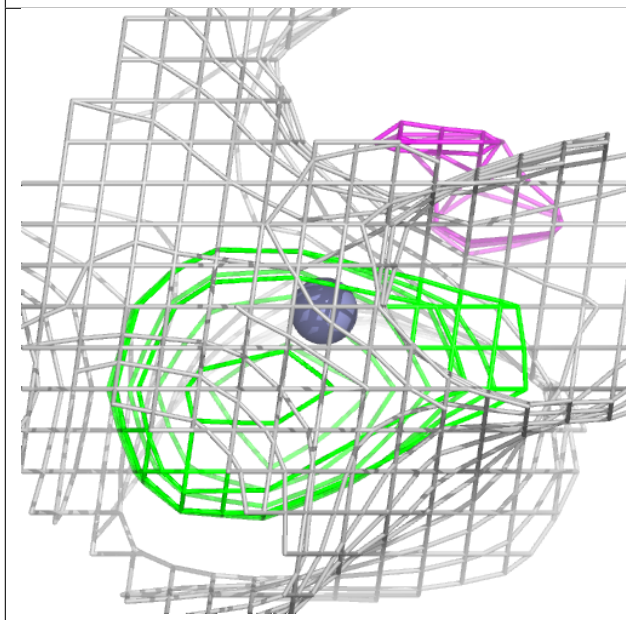
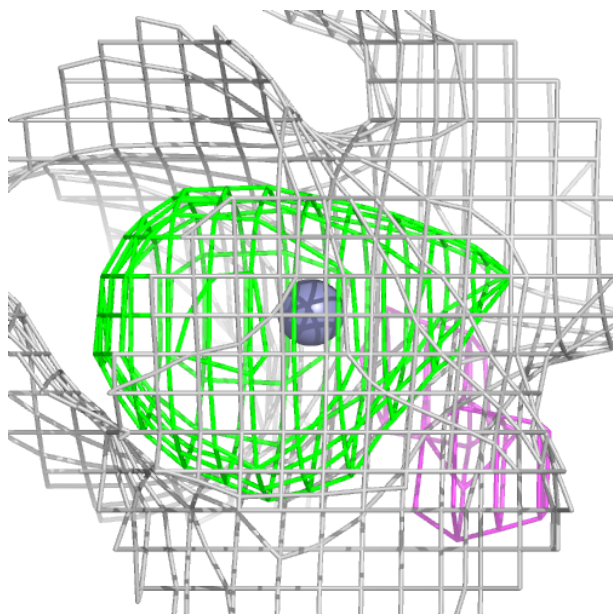
In the following table, the Atoms column lists the number of modelled atoms in the group and the number defined in the chemical component dictionary. The B-factors column lists the minimum, median, 95<sup>th</sup> percentile and maximum values of B factors of atoms in the group. The column labelled 'Q< 0.9' lists the number of atoms with occupancy less than 0.9.

Mol	Type	Chain	Res	Atoms	RSCC	RSR	B-factors(Å <sup>2</sup> )	Q<0.9
3	ZN	A	702	1/1	0.59	0.29	153,153,153,153	0
4	GOL	A	703	6/6	0.90	0.19	34,47,69,70	0
2	9AJ	A	701	49/49	0.93	0.14	18,33,65,78	0

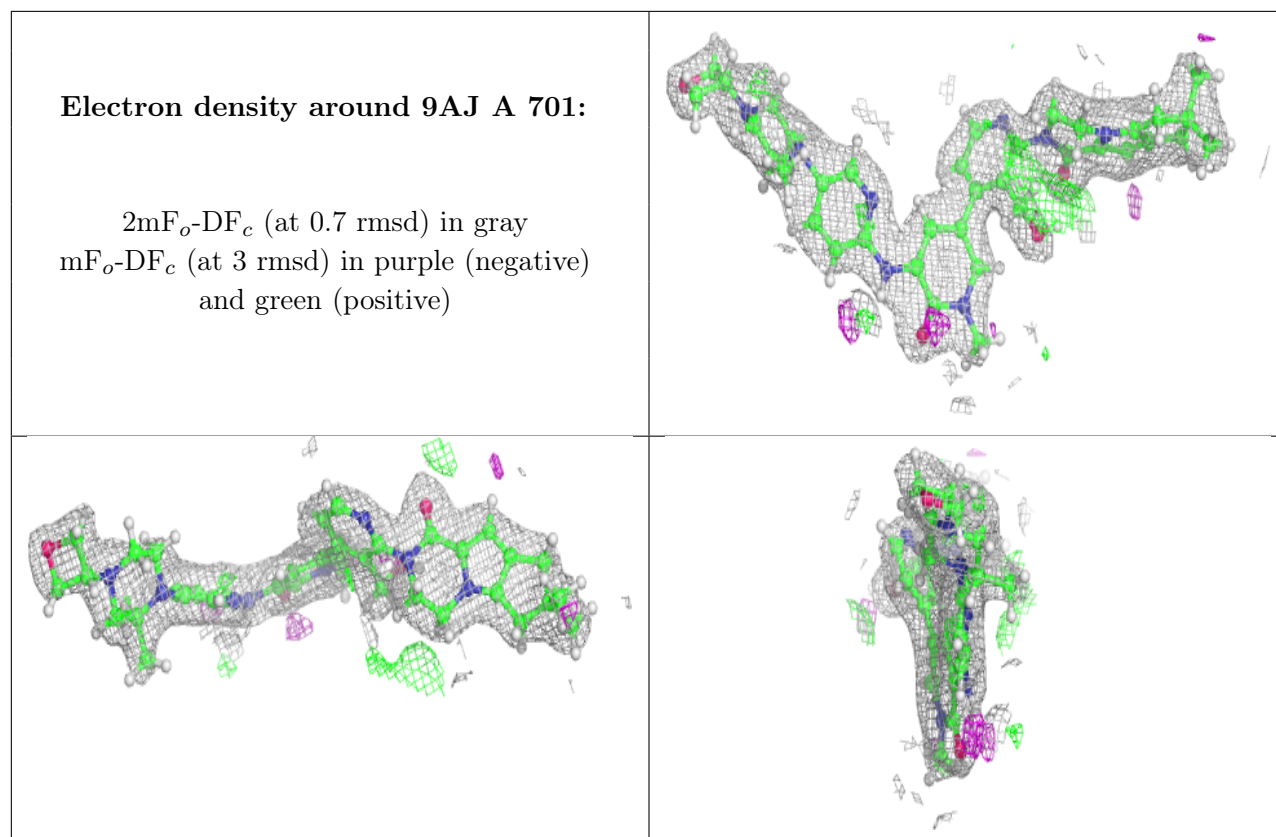
The following is a graphical depiction of the model fit to experimental electron density of all instances of the Ligand of Interest. In addition, ligands with molecular weight > 250 and outliers as shown on the geometry validation Tables will also be included. Each fit is shown from different orientation to approximate a three-dimensional view.

**Electron density around ZN A 702:**

$2mF_o-DF_c$  (at 0.7 rmsd) in gray  
 $mF_o-DF_c$  (at 3 rmsd) in purple (negative)  
and green (positive)







## 6.5 Other polymers [i](#)

There are no such residues in this entry.