



Full wwPDB X-ray Structure Validation Report ⓘ

Apr 6, 2023 – 12:06 PM EDT

PDB ID : 8SC0
Title : Crystal Structure of 2,3-dihydro-2,3-dihydroxybenzoate dehydrogenase from *Klebsiella aerogenes* (NAD bound, orthorhombic form)
Authors : Seattle Structural Genomics Center for Infectious Disease (SSGCID)
Deposited on : 2023-04-04
Resolution : 1.81 Å(reported)

This is a Full wwPDB X-ray Structure Validation Report for a publicly released PDB entry.

We welcome your comments at validation@mail.wwpdb.org

A user guide is available at

<https://www.wwpdb.org/validation/2017/XrayValidationReportHelp>

with specific help available everywhere you see the ⓘ symbol.

The types of validation reports are described at

<http://www.wwpdb.org/validation/2017/FAQs#types>.

The following versions of software and data (see [references ⓘ](#)) were used in the production of this report:

MolProbity : 4.02b-467
Mogul : 1.8.5 (274361), CSD as541be (2020)
Xtriage (Phenix) : 1.13
EDS : 2.32.2
buster-report : 1.1.7 (2018)
Percentile statistics : 20191225.v01 (using entries in the PDB archive December 25th 2019)
Refmac : 5.8.0158
CCP4 : 7.0.044 (Gargrove)
Ideal geometry (proteins) : Engh & Huber (2001)
Ideal geometry (DNA, RNA) : Parkinson et al. (1996)
Validation Pipeline (wwPDB-VP) : 2.32.2

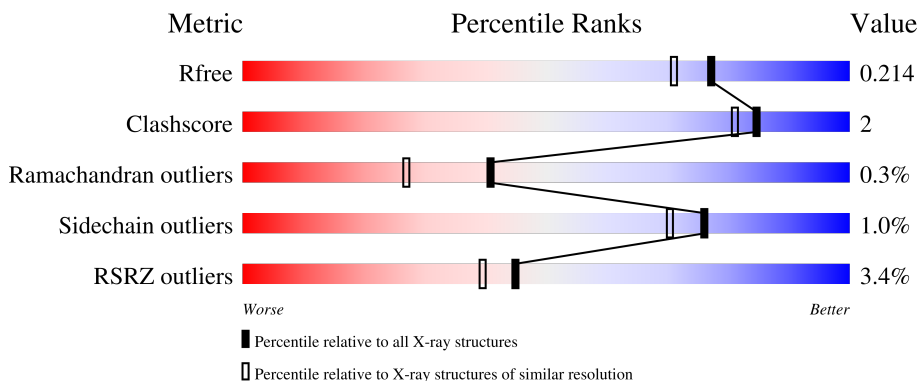
1 Overall quality at a glance

The following experimental techniques were used to determine the structure:

X-RAY DIFFRACTION

The reported resolution of this entry is 1.81 Å.

Percentile scores (ranging between 0-100) for global validation metrics of the entry are shown in the following graphic. The table shows the number of entries on which the scores are based.



Metric	Whole archive (#Entries)	Similar resolution (#Entries, resolution range(Å))
R_{free}	130704	7484 (1.84-1.80)
Clashscore	141614	8401 (1.84-1.80)
Ramachandran outliers	138981	8290 (1.84-1.80)
Sidechain outliers	138945	8290 (1.84-1.80)
RSRZ outliers	127900	7371 (1.84-1.80)

The table below summarises the geometric issues observed across the polymeric chains and their fit to the electron density. The red, orange, yellow and green segments of the lower bar indicate the fraction of residues that contain outliers for ≥ 3 , 2, 1 and 0 types of geometric quality criteria respectively. A grey segment represents the fraction of residues that are not modelled. The numeric value for each fraction is indicated below the corresponding segment, with a dot representing fractions $\leq 5\%$. The upper red bar (where present) indicates the fraction of residues that have poor fit to the electron density. The numeric value is given above the bar.

Mol	Chain	Length	Quality of chain
1	A	259	
1	B	259	
1	C	259	
1	D	259	

2 Entry composition i

There are 4 unique types of molecules in this entry. The entry contains 8171 atoms, of which 0 are hydrogens and 0 are deuteriums.

In the tables below, the ZeroOcc column contains the number of atoms modelled with zero occupancy, the AltConf column contains the number of residues with at least one atom in alternate conformation and the Trace column contains the number of residues modelled with at most 2 atoms.

- Molecule 1 is a protein called 2,3-dihydroxybenzoate-2,3-dehydrogenase.

Mol	Chain	Residues	Atoms					ZeroOcc	AltConf	Trace
			Total	C	N	O	S			
1	A	248	Total	C	N	O	S	0	20	0
			1996	1245	354	388	9			
1	B	248	Total	C	N	O	S	0	19	0
			1989	1241	353	386	9			
1	C	239	Total	C	N	O	S	0	3	0
			1773	1110	315	341	7			
1	D	235	Total	C	N	O	S	0	2	0
			1745	1095	307	336	7			

There are 40 discrepancies between the modelled and reference sequences:

Chain	Residue	Modelled	Actual	Comment	Reference
A	-7	MET	-	initiating methionine	UNP A0A0H3FXS4
A	-6	ALA	-	expression tag	UNP A0A0H3FXS4
A	-5	HIS	-	expression tag	UNP A0A0H3FXS4
A	-4	HIS	-	expression tag	UNP A0A0H3FXS4
A	-3	HIS	-	expression tag	UNP A0A0H3FXS4
A	-2	HIS	-	expression tag	UNP A0A0H3FXS4
A	-1	HIS	-	expression tag	UNP A0A0H3FXS4
A	0	HIS	-	expression tag	UNP A0A0H3FXS4
A	2	ASN	ALA	engineered mutation	UNP A0A0H3FXS4
A	3	GLY	ALA	engineered mutation	UNP A0A0H3FXS4
B	-7	MET	-	initiating methionine	UNP A0A0H3FXS4
B	-6	ALA	-	expression tag	UNP A0A0H3FXS4
B	-5	HIS	-	expression tag	UNP A0A0H3FXS4
B	-4	HIS	-	expression tag	UNP A0A0H3FXS4
B	-3	HIS	-	expression tag	UNP A0A0H3FXS4
B	-2	HIS	-	expression tag	UNP A0A0H3FXS4
B	-1	HIS	-	expression tag	UNP A0A0H3FXS4
B	0	HIS	-	expression tag	UNP A0A0H3FXS4
B	2	ASN	ALA	engineered mutation	UNP A0A0H3FXS4
B	3	GLY	ALA	engineered mutation	UNP A0A0H3FXS4
C	-7	MET	-	initiating methionine	UNP A0A0H3FXS4

Continued on next page...

Continued from previous page...

Chain	Residue	Modelled	Actual	Comment	Reference
C	-6	ALA	-	expression tag	UNP A0A0H3FXS4
C	-5	HIS	-	expression tag	UNP A0A0H3FXS4
C	-4	HIS	-	expression tag	UNP A0A0H3FXS4
C	-3	HIS	-	expression tag	UNP A0A0H3FXS4
C	-2	HIS	-	expression tag	UNP A0A0H3FXS4
C	-1	HIS	-	expression tag	UNP A0A0H3FXS4
C	0	HIS	-	expression tag	UNP A0A0H3FXS4
C	2	ASN	ALA	engineered mutation	UNP A0A0H3FXS4
C	3	GLY	ALA	engineered mutation	UNP A0A0H3FXS4
D	-7	MET	-	initiating methionine	UNP A0A0H3FXS4
D	-6	ALA	-	expression tag	UNP A0A0H3FXS4
D	-5	HIS	-	expression tag	UNP A0A0H3FXS4
D	-4	HIS	-	expression tag	UNP A0A0H3FXS4
D	-3	HIS	-	expression tag	UNP A0A0H3FXS4
D	-2	HIS	-	expression tag	UNP A0A0H3FXS4
D	-1	HIS	-	expression tag	UNP A0A0H3FXS4
D	0	HIS	-	expression tag	UNP A0A0H3FXS4
D	2	ASN	ALA	engineered mutation	UNP A0A0H3FXS4
D	3	GLY	ALA	engineered mutation	UNP A0A0H3FXS4

- Molecule 2 is GLYCEROL (three-letter code: GOL) (formula: C₃H₈O₃).



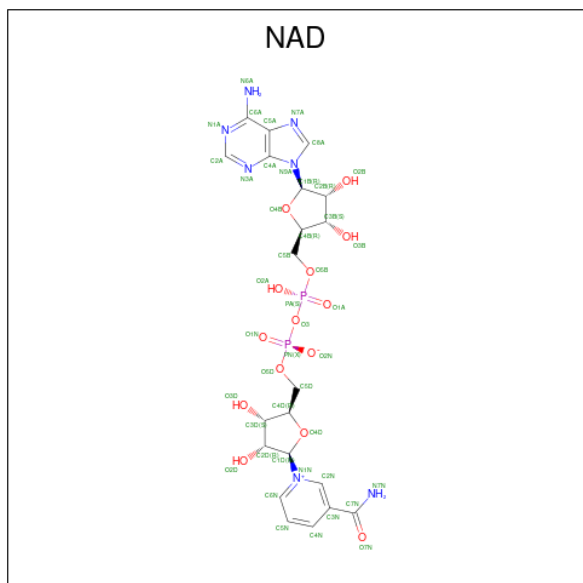
Mol	Chain	Residues	Atoms			ZeroOcc	AltConf
2	A	1	Total	C	O	0	0
			6	3	3		
2	B	1	Total	C	O	0	0
			6	3	3		

Continued on next page...

Continued from previous page...

Mol	Chain	Residues	Atoms			ZeroOcc	AltConf
2	C	1	Total	C	O	0	0
			6	3	3		
2	D	1	Total	C	O	0	0
			6	3	3		

- Molecule 3 is NICOTINAMIDE-ADENINE-DINUCLEOTIDE (three-letter code: NAD) (formula: $C_{21}H_{27}N_7O_{14}P_2$) (labeled as "Ligand of Interest" by depositor).



Mol	Chain	Residues	Atoms					ZeroOcc	AltConf
3	C	1	Total	C	N	O	P	0	0
			44	21	7	14	2		
3	D	1	Total	C	N	O	P	0	0
			44	21	7	14	2		

- Molecule 4 is water.

Mol	Chain	Residues	Atoms		ZeroOcc	AltConf
4	A	155	Total	O	0	0
			155	155		
4	B	128	Total	O	0	0
			128	128		
4	C	151	Total	O	0	0
			151	151		
4	D	122	Total	O	0	0
			122	122		

4 Data and refinement statistics

Property	Value	Source
Space group	P 21 21 21	Depositor
Cell constants a, b, c, α , β , γ	71.97Å 91.94Å 144.16Å 90.00° 90.00° 90.00°	Depositor
Resolution (Å)	42.59 – 1.81 77.52 – 1.81	Depositor EDS
% Data completeness (in resolution range)	99.2 (42.59-1.81) 99.3 (77.52-1.81)	Depositor EDS
R_{merge}	0.12	Depositor
R_{sym}	(Not available)	Depositor
$\langle I/\sigma(I) \rangle$ ¹	0.76 (at 1.81Å)	Xtrriage
Refinement program	PHENIX (1.21rc1_4918: ???)	Depositor
R, R_{free}	0.169 , 0.205 0.177 , 0.214	Depositor DCC
R_{free} test set	4318 reflections (4.98%)	wwPDB-VP
Wilson B-factor (Å ²)	28.4	Xtrriage
Anisotropy	0.467	Xtrriage
Bulk solvent k_{sol} (e/Å ³), B_{sol} (Å ²)	0.37 , 47.4	EDS
L-test for twinning ²	$\langle L \rangle = 0.50$, $\langle L^2 \rangle = 0.33$	Xtrriage
Estimated twinning fraction	No twinning to report.	Xtrriage
F_o, F_c correlation	0.96	EDS
Total number of atoms	8171	wwPDB-VP
Average B, all atoms (Å ²)	32.0	wwPDB-VP

Xtrriage's analysis on translational NCS is as follows: *The largest off-origin peak in the Patterson function is 6.32% of the height of the origin peak. No significant pseudotranslation is detected.*

¹Intensities estimated from amplitudes.

²Theoretical values of $\langle |L| \rangle$, $\langle L^2 \rangle$ for acentric reflections are 0.5, 0.333 respectively for untwinned datasets, and 0.375, 0.2 for perfectly twinned datasets.

5 Model quality [i](#)

5.1 Standard geometry [i](#)

Bond lengths and bond angles in the following residue types are not validated in this section: NAD, GOL

The Z score for a bond length (or angle) is the number of standard deviations the observed value is removed from the expected value. A bond length (or angle) with $|Z| > 5$ is considered an outlier worth inspection. RMSZ is the root-mean-square of all Z scores of the bond lengths (or angles).

Mol	Chain	Bond lengths		Bond angles	
		RMSZ	# Z >5	RMSZ	# Z >5
1	A	0.30	0/2034	0.56	0/2759
1	B	0.31	0/2027	0.56	0/2749
1	C	0.30	0/1806	0.54	0/2446
1	D	0.28	0/1777	0.53	0/2406
All	All	0.30	0/7644	0.55	0/10360

There are no bond length outliers.

There are no bond angle outliers.

There are no chirality outliers.

There are no planarity outliers.

5.2 Too-close contacts [i](#)

In the following table, the Non-H and H(model) columns list the number of non-hydrogen atoms and hydrogen atoms in the chain respectively. The H(added) column lists the number of hydrogen atoms added and optimized by MolProbity. The Clashes column lists the number of clashes within the asymmetric unit, whereas Symm-Clashes lists symmetry-related clashes.

Mol	Chain	Non-H	H(model)	H(added)	Clashes	Symm-Clashes
1	A	1996	0	1936	9	0
1	B	1989	0	1934	18	0
1	C	1773	0	1746	8	0
1	D	1745	0	1725	4	0
2	A	6	0	8	0	0
2	B	6	0	8	0	0
2	C	6	0	8	0	0
2	D	6	0	8	0	0
3	C	44	0	26	2	0

Continued on next page...

Continued from previous page...

Mol	Chain	Non-H	H(model)	H(added)	Clashes	Symm-Clashes
3	D	44	0	26	3	0
4	A	155	0	0	0	0
4	B	128	0	0	0	0
4	C	151	0	0	1	0
4	D	122	0	0	0	0
All	All	8171	0	7425	35	0

The all-atom clashscore is defined as the number of clashes found per 1000 atoms (including hydrogen atoms). The all-atom clashscore for this structure is 2.

All (35) close contacts within the same asymmetric unit are listed below, sorted by their clash magnitude.

Atom-1	Atom-2	Interatomic distance (Å)	Clash overlap (Å)
1:B:187[A]:THR:HG22	1:B:188[A]:LEU:H	1.49	0.77
1:A:70:LEU:HD23	1:A:73:ILE:HD11	1.81	0.63
1:C:97:GLU:OE2	1:C:101:GLN:NE2	2.32	0.62
1:B:188[A]:LEU:HD12	1:B:193[A]:ASP:HA	1.82	0.61
1:B:182[A]:THR:HG23	1:B:218:PRO:CG	2.34	0.57
1:B:192[B]:GLU:HG2	1:B:217:ARG:CG	2.35	0.56
1:B:193[A]:ASP:OD1	1:B:193[A]:ASP:N	2.37	0.56
1:A:192[B]:GLU:O	1:A:193[B]:ASP:C	2.44	0.55
1:C:87[B]:ARG:NH1	1:C:101:GLN:OE1	2.40	0.54
1:B:70:LEU:HD23	1:B:73:ILE:HD11	1.89	0.54
1:A:195[A]:GLU:OE2	1:B:87[A]:ARG:NH1	2.37	0.54
1:B:181[B]:ASP:OD1	1:B:182[B]:THR:N	2.41	0.54
1:B:182[A]:THR:HG23	1:B:218:PRO:HG2	1.91	0.53
1:A:181[A]:ASP:OD1	1:A:182[A]:THR:N	2.39	0.52
1:B:187[A]:THR:HG22	1:B:188[A]:LEU:N	2.22	0.51
1:A:147:TYR:HE2	1:B:190[A]:VAL:HG21	1.77	0.49
1:A:147:TYR:CE2	1:B:190[A]:VAL:HG21	2.48	0.48
1:D:134:SER:OG	3:D:301:NAD:N7N	2.47	0.48
1:A:18:LYS:NZ	1:B:195[A]:GLU:OE1	2.48	0.46
1:B:182[A]:THR:HG23	1:B:218:PRO:HG3	1.96	0.46
1:D:129:ILE:HD12	1:D:172[A]:CYS:SG	2.56	0.46
1:B:192[A]:GLU:O	1:B:193[A]:ASP:C	2.53	0.46
1:C:20:ILE:HB	3:C:301:NAD:H51N	1.98	0.45
1:B:195[A]:GLU:O	1:B:195[A]:GLU:HG2	2.16	0.45
1:B:183[A]:ASP:HA	1:B:186[A]:ARG:HD3	1.99	0.44
1:D:20:ILE:HB	3:D:301:NAD:H51N	1.98	0.44
1:B:192[B]:GLU:HG2	1:B:217:ARG:HG3	2.01	0.43
1:C:87[B]:ARG:NH2	1:C:101:GLN:OE1	2.49	0.43

Continued on next page...

Continued from previous page...

Atom-1	Atom-2	Interatomic distance (Å)	Clash overlap (Å)
1:C:11:VAL:HG22	1:C:78:VAL:HB	1.99	0.43
1:C:19:GLY:HA3	3:C:301:NAD:O2N	2.19	0.43
1:C:100:GLN:NE2	4:C:402:HOH:O	2.38	0.42
1:C:121:PHE:HB3	1:C:170:VAL:HG21	2.01	0.42
1:D:19:GLY:HA3	3:D:301:NAD:O2N	2.20	0.41
1:A:196[B]:GLN:HG3	1:A:198:ARG:H	1.85	0.41
1:A:138:HIS:NE2	1:A:240:ASP:OD2	2.55	0.40

There are no symmetry-related clashes.

5.3 Torsion angles [i](#)

5.3.1 Protein backbone [i](#)

In the following table, the Percentiles column shows the percent Ramachandran outliers of the chain as a percentile score with respect to all X-ray entries followed by that with respect to entries of similar resolution.

The Analysed column shows the number of residues for which the backbone conformation was analysed, and the total number of residues.

Mol	Chain	Analysed	Favoured	Allowed	Outliers	Percentiles	
1	A	266/259 (103%)	244 (92%)	18 (7%)	4 (2%)	10	2
1	B	265/259 (102%)	254 (96%)	10 (4%)	1 (0%)	34	21
1	C	238/259 (92%)	229 (96%)	9 (4%)	0	100	100
1	D	231/259 (89%)	223 (96%)	8 (4%)	0	100	100
All	All	1000/1036 (96%)	950 (95%)	45 (4%)	5 (0%)	41	15

All (5) Ramachandran outliers are listed below:

Mol	Chain	Res	Type
1	A	193[A]	ASP
1	A	193[B]	ASP
1	A	194[A]	ALA
1	A	194[B]	ALA
1	B	125	ARG

5.3.2 Protein sidechains [i](#)

In the following table, the Percentiles column shows the percent sidechain outliers of the chain as a percentile score with respect to all X-ray entries followed by that with respect to entries of similar resolution.

The Analysed column shows the number of residues for which the sidechain conformation was analysed, and the total number of residues.

Mol	Chain	Analysed	Rotameric	Outliers	Percentiles	
1	A	203/195 (104%)	203 (100%)	0	100	100
1	B	202/195 (104%)	191 (95%)	11 (5%)	22	8
1	C	178/195 (91%)	178 (100%)	0	100	100
1	D	177/195 (91%)	176 (99%)	1 (1%)	86	83
All	All	760/780 (97%)	748 (98%)	12 (2%)	76	53

All (12) residues with a non-rotameric sidechain are listed below:

Mol	Chain	Res	Type
1	B	60	ASP
1	B	182[A]	THR
1	B	182[B]	THR
1	B	184[A]	MET
1	B	184[B]	MET
1	B	190[A]	VAL
1	B	190[B]	VAL
1	B	193[A]	ASP
1	B	193[B]	ASP
1	B	195[A]	GLU
1	B	195[B]	GLU
1	D	71	ASN

Sometimes sidechains can be flipped to improve hydrogen bonding and reduce clashes. All (1) such sidechains are listed below:

Mol	Chain	Res	Type
1	A	61	GLN

5.3.3 RNA [i](#)

There are no RNA molecules in this entry.

5.4 Non-standard residues in protein, DNA, RNA chains [i](#)

There are no non-standard protein/DNA/RNA residues in this entry.

5.5 Carbohydrates [i](#)

There are no monosaccharides in this entry.

5.6 Ligand geometry [i](#)

6 ligands are modelled in this entry.

In the following table, the Counts columns list the number of bonds (or angles) for which Mogul statistics could be retrieved, the number of bonds (or angles) that are observed in the model and the number of bonds (or angles) that are defined in the Chemical Component Dictionary. The Link column lists molecule types, if any, to which the group is linked. The Z score for a bond length (or angle) is the number of standard deviations the observed value is removed from the expected value. A bond length (or angle) with $|Z| > 2$ is considered an outlier worth inspection. RMSZ is the root-mean-square of all Z scores of the bond lengths (or angles).

Mol	Type	Chain	Res	Link	Bond lengths			Bond angles		
					Counts	RMSZ	# Z > 2	Counts	RMSZ	# Z > 2
3	NAD	D	301	-	42,48,48	0.82	2 (4%)	50,73,73	0.98	4 (8%)
2	GOL	C	302	-	5,5,5	0.29	0	5,5,5	0.53	0
2	GOL	B	301	-	5,5,5	0.31	0	5,5,5	0.49	0
2	GOL	A	401	-	5,5,5	0.34	0	5,5,5	0.42	0
3	NAD	C	301	-	42,48,48	0.85	2 (4%)	50,73,73	1.00	3 (6%)
2	GOL	D	302	-	5,5,5	0.27	0	5,5,5	0.47	0

In the following table, the Chirals column lists the number of chiral outliers, the number of chiral centers analysed, the number of these observed in the model and the number defined in the Chemical Component Dictionary. Similar counts are reported in the Torsion and Rings columns. '-' means no outliers of that kind were identified.

Mol	Type	Chain	Res	Link	Chirals	Torsions	Rings
3	NAD	D	301	-	-	9/26/62/62	0/5/5/5
2	GOL	C	302	-	-	2/4/4/4	-
2	GOL	B	301	-	-	0/4/4/4	-
2	GOL	A	401	-	-	0/4/4/4	-
3	NAD	C	301	-	-	9/26/62/62	0/5/5/5
2	GOL	D	302	-	-	0/4/4/4	-

All (4) bond length outliers are listed below:

Mol	Chain	Res	Type	Atoms	Z	Observed(Å)	Ideal(Å)
3	C	301	NAD	C8A-N7A	-2.58	1.30	1.34
3	D	301	NAD	C8A-N7A	-2.37	1.30	1.34
3	D	301	NAD	O4D-C1D	-2.23	1.38	1.41
3	C	301	NAD	O4D-C1D	-2.21	1.38	1.41

All (7) bond angle outliers are listed below:

Mol	Chain	Res	Type	Atoms	Z	Observed(°)	Ideal(°)
3	C	301	NAD	C3N-C7N-N7N	-3.17	113.95	117.75
3	D	301	NAD	O4B-C1B-C2B	-2.72	102.95	106.93
3	D	301	NAD	C3N-C7N-N7N	-2.55	114.69	117.75
3	C	301	NAD	O7N-C7N-N7N	2.43	126.02	122.58
3	D	301	NAD	O2A-PA-O1A	2.21	123.16	112.24
3	C	301	NAD	O2A-PA-O1A	2.19	123.08	112.24
3	D	301	NAD	PN-O3-PA	-2.11	125.58	132.83

There are no chirality outliers.

All (20) torsion outliers are listed below:

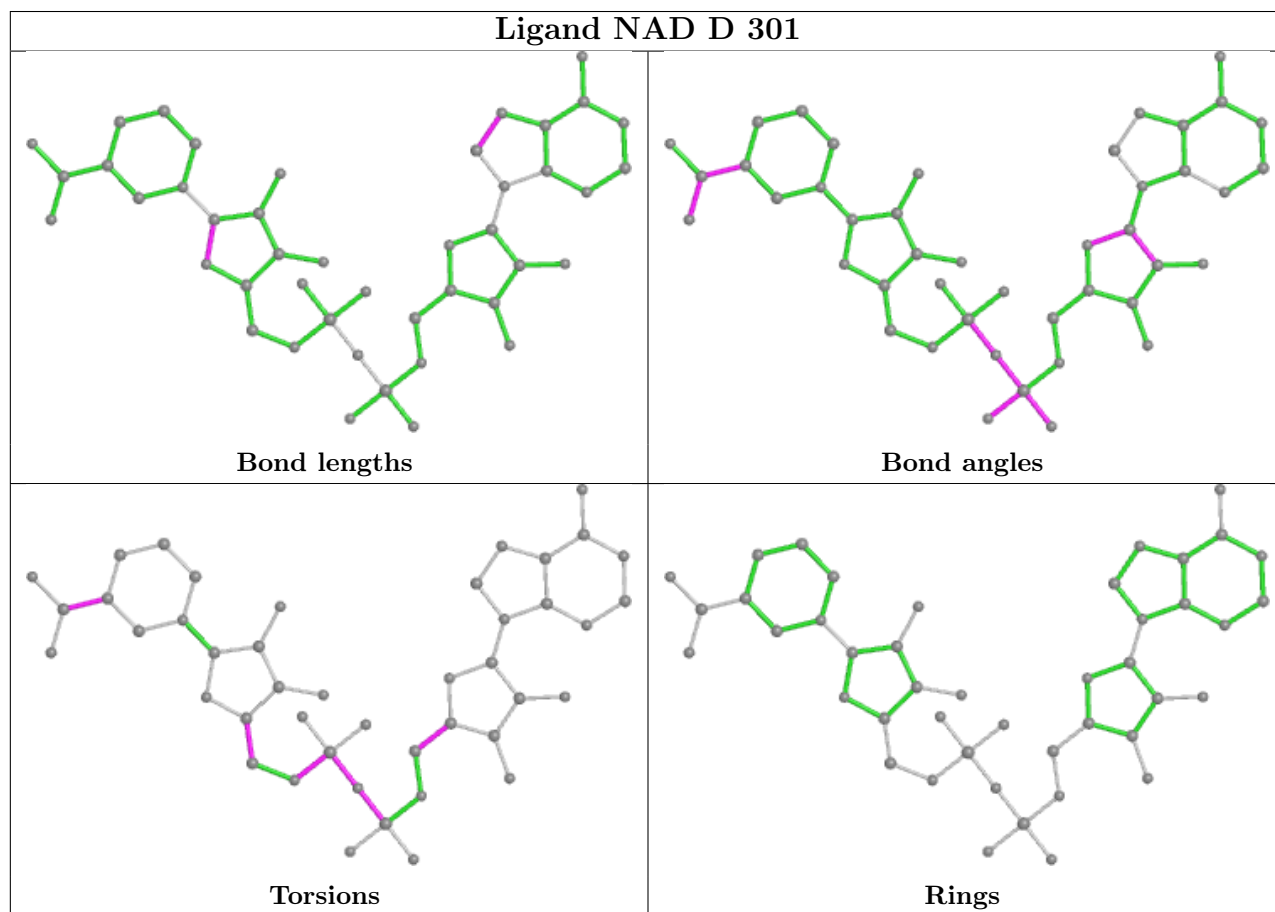
Mol	Chain	Res	Type	Atoms
3	C	301	NAD	C5D-O5D-PN-O3
3	D	301	NAD	PN-O3-PA-O5B
3	D	301	NAD	C5D-O5D-PN-O1N
3	D	301	NAD	O4D-C4D-C5D-O5D
3	C	301	NAD	O4D-C4D-C5D-O5D
3	C	301	NAD	C3D-C4D-C5D-O5D
3	D	301	NAD	C3D-C4D-C5D-O5D
3	C	301	NAD	C4N-C3N-C7N-N7N
2	C	302	GOL	O1-C1-C2-O2
3	C	301	NAD	C5D-O5D-PN-O1N
3	C	301	NAD	C4N-C3N-C7N-O7N
3	D	301	NAD	PA-O3-PN-O2N
3	D	301	NAD	O4B-C4B-C5B-O5B
3	C	301	NAD	C2N-C3N-C7N-N7N
3	D	301	NAD	C5D-O5D-PN-O3
3	C	301	NAD	O4B-C4B-C5B-O5B
3	C	301	NAD	PA-O3-PN-O2N
3	D	301	NAD	PA-O3-PN-O1N
2	C	302	GOL	O1-C1-C2-C3
3	D	301	NAD	C4N-C3N-C7N-N7N

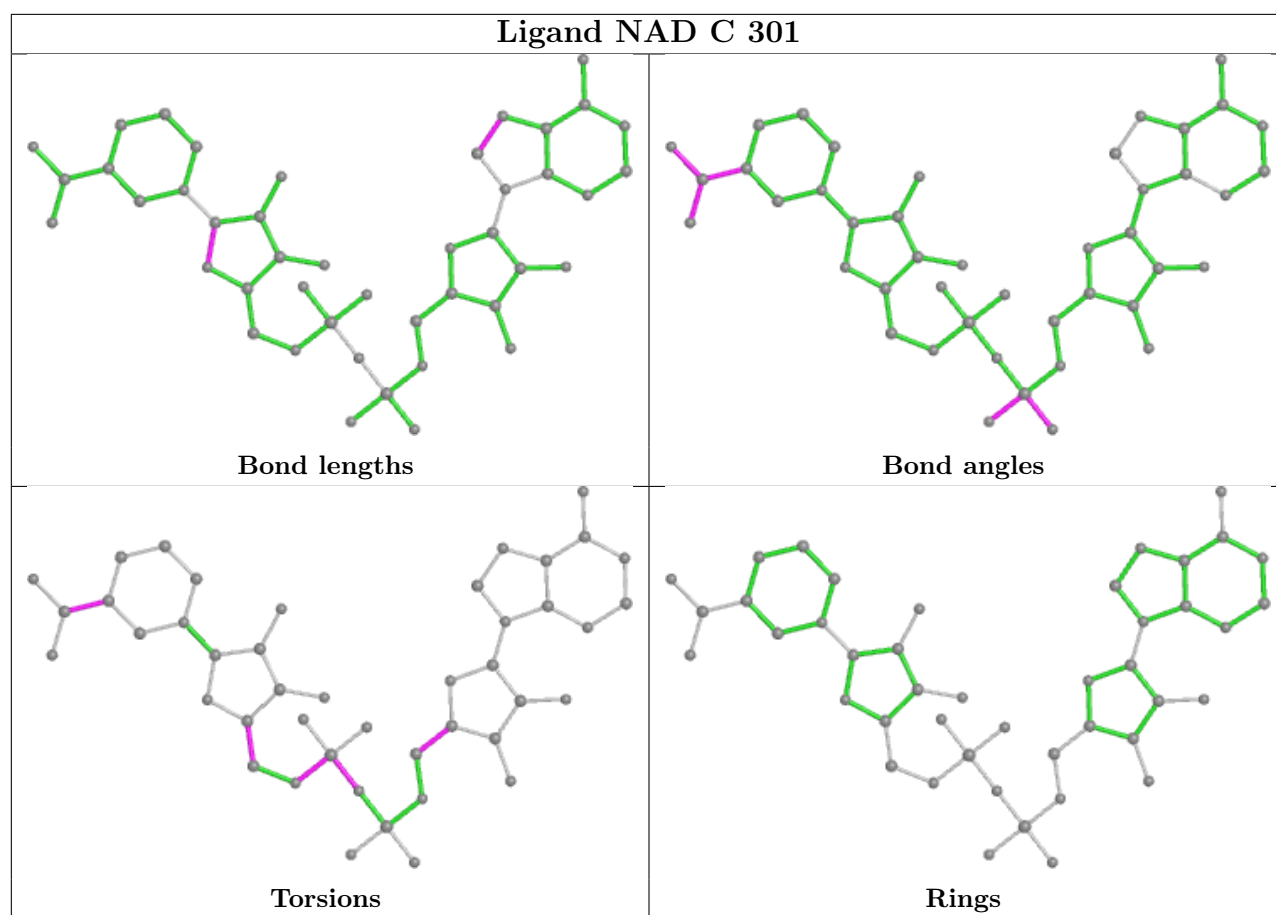
There are no ring outliers.

2 monomers are involved in 5 short contacts:

Mol	Chain	Res	Type	Clashes	Symm-Clashes
3	D	301	NAD	3	0
3	C	301	NAD	2	0

The following is a two-dimensional graphical depiction of Mogul quality analysis of bond lengths, bond angles, torsion angles, and ring geometry for all instances of the Ligand of Interest. In addition, ligands with molecular weight > 250 and outliers as shown on the validation Tables will also be included. For torsion angles, if less than 5% of the Mogul distribution of torsion angles is within 10 degrees of the torsion angle in question, then that torsion angle is considered an outlier. Any bond that is central to one or more torsion angles identified as an outlier by Mogul will be highlighted in the graph. For rings, the root-mean-square deviation (RMSD) between the ring in question and similar rings identified by Mogul is calculated over all ring torsion angles. If the average RMSD is greater than 60 degrees and the minimal RMSD between the ring in question and any Mogul-identified rings is also greater than 60 degrees, then that ring is considered an outlier. The outliers are highlighted in purple. The color gray indicates Mogul did not find sufficient equivalents in the CSD to analyse the geometry.





5.7 Other polymers [i](#)

There are no such residues in this entry.

5.8 Polymer linkage issues [i](#)

There are no chain breaks in this entry.

6 Fit of model and data [i](#)

6.1 Protein, DNA and RNA chains [i](#)

In the following table, the column labelled ‘#RSRZ > 2’ contains the number (and percentage) of RSRZ outliers, followed by percent RSRZ outliers for the chain as percentile scores relative to all X-ray entries and entries of similar resolution. The OWAB column contains the minimum, median, 95th percentile and maximum values of the occupancy-weighted average B-factor per residue. The column labelled ‘Q < 0.9’ lists the number of (and percentage) of residues with an average occupancy less than 0.9.

Mol	Chain	Analysed	<RSRZ>	#RSRZ>2	OWAB(Å ²)	Q<0.9
1	A	248/259 (95%)	-0.06	11 (4%) 34 28	19, 26, 45, 70	0
1	B	248/259 (95%)	-0.06	13 (5%) 27 22	19, 29, 52, 79	0
1	C	239/259 (92%)	-0.23	3 (1%) 77 74	19, 28, 53, 74	0
1	D	235/259 (90%)	-0.10	6 (2%) 56 51	23, 33, 58, 82	0
All	All	970/1036 (93%)	-0.11	33 (3%) 45 39	19, 29, 53, 82	0

All (33) RSRZ outliers are listed below:

Mol	Chain	Res	Type	RSRZ
1	A	195[A]	GLU	6.0
1	A	194[A]	ALA	5.4
1	D	193	ASP	4.3
1	B	194[A]	ALA	4.1
1	B	189[A]	TRP	4.0
1	A	189[A]	TRP	3.9
1	B	183[A]	ASP	3.9
1	B	182[A]	THR	3.8
1	B	188[A]	LEU	3.7
1	B	190[A]	VAL	3.6
1	A	183[A]	ASP	3.6
1	B	187[A]	THR	3.5
1	A	188[A]	LEU	3.4
1	B	195[A]	GLU	3.3
1	A	190[A]	VAL	3.2
1	A	184[A]	MET	3.0
1	D	7	HIS	3.0
1	C	183	ASP	2.9
1	B	196[A]	GLN	2.9
1	B	4	LEU	2.7
1	B	186[A]	ARG	2.7

Continued on next page...

Continued from previous page...

Mol	Chain	Res	Type	RSRZ
1	D	182	THR	2.7
1	A	187[A]	THR	2.7
1	A	182[A]	THR	2.6
1	B	193[A]	ASP	2.6
1	B	192[A]	GLU	2.5
1	A	193[A]	ASP	2.5
1	A	181[A]	ASP	2.4
1	C	4	LEU	2.3
1	D	125	ARG	2.3
1	D	202	PHE	2.2
1	D	41	ALA	2.1
1	C	44	GLY	2.1

6.2 Non-standard residues in protein, DNA, RNA chains [i](#)

There are no non-standard protein/DNA/RNA residues in this entry.

6.3 Carbohydrates [i](#)

There are no monosaccharides in this entry.

6.4 Ligands [i](#)

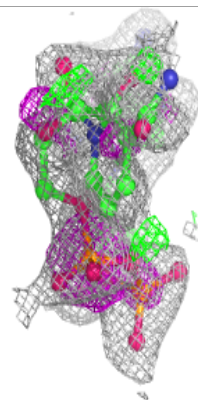
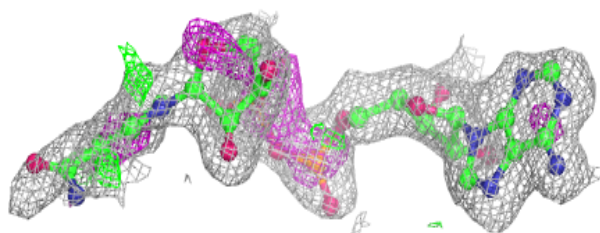
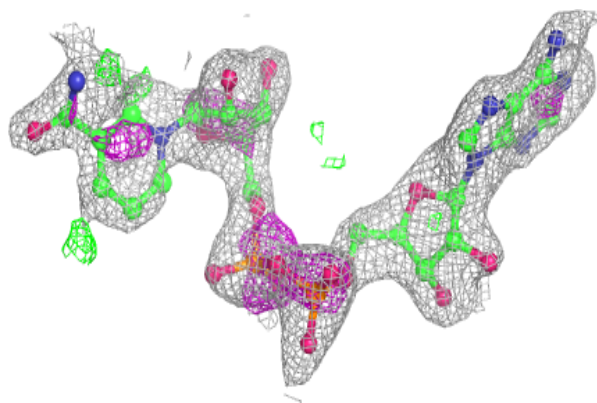
In the following table, the Atoms column lists the number of modelled atoms in the group and the number defined in the chemical component dictionary. The B-factors column lists the minimum, median, 95th percentile and maximum values of B factors of atoms in the group. The column labelled 'Q< 0.9' lists the number of atoms with occupancy less than 0.9.

Mol	Type	Chain	Res	Atoms	RSCC	RSR	B-factors(Å ²)	Q<0.9
3	NAD	D	301	44/44	0.81	0.24	35,52,61,64	0
2	GOL	D	302	6/6	0.83	0.11	38,41,43,45	0
2	GOL	C	302	6/6	0.87	0.14	36,38,43,46	0
2	GOL	B	301	6/6	0.91	0.11	29,34,37,41	0
3	NAD	C	301	44/44	0.92	0.16	31,38,51,59	0
2	GOL	A	401	6/6	0.94	0.11	30,32,34,41	0

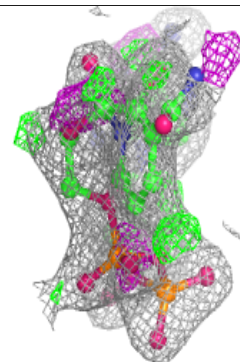
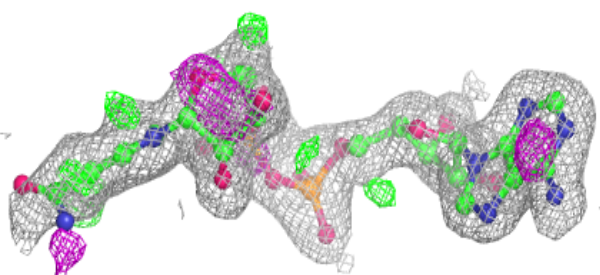
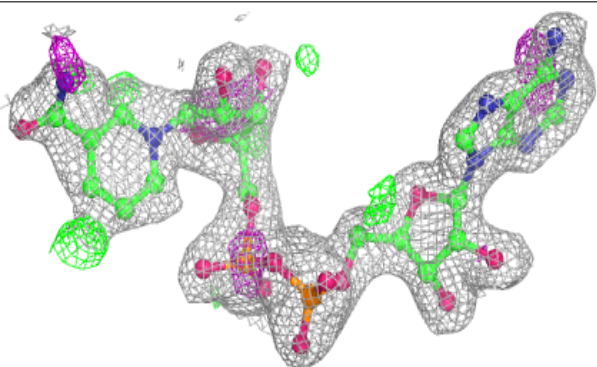
The following is a graphical depiction of the model fit to experimental electron density of all instances of the Ligand of Interest. In addition, ligands with molecular weight > 250 and outliers as shown on the geometry validation Tables will also be included. Each fit is shown from different orientation to approximate a three-dimensional view.

Electron density around NAD D 301:

$2mF_o-DF_c$ (at 0.7 rmsd) in gray
 mF_o-DF_c (at 3 rmsd) in purple (negative)
and green (positive)

**Electron density around NAD C 301:**

$2mF_o-DF_c$ (at 0.7 rmsd) in gray
 mF_o-DF_c (at 3 rmsd) in purple (negative)
and green (positive)



6.5 Other polymers [i](#)

There are no such residues in this entry.