



# wwPDB X-ray Structure Validation Summary Report ⓘ

Aug 9, 2020 – 08:15 AM BST

PDB ID : 6SEK  
Title : Crystal Structure of Ancestral Flavin-containing monooxygenase (FMO) 5  
Authors : Nicoll, C.; Bailleul, G.; Fiorentini, F.; Mascotti, M.L.; Fraaije, M.; Mattevi, A.  
Deposited on : 2019-07-30  
Resolution : 2.70 Å(reported)

This is a wwPDB X-ray Structure Validation Summary Report for a publicly released PDB entry.

We welcome your comments at [validation@mail.wwpdb.org](mailto:validation@mail.wwpdb.org)

A user guide is available at

<https://www.wwpdb.org/validation/2017/XrayValidationReportHelp>

with specific help available everywhere you see the ⓘ symbol.

---

The following versions of software and data (see [references ⓘ](#)) were used in the production of this report:

MolProbity : 4.02b-467  
Mogul : 1.8.5 (274361), CSD as541be (2020)  
Xtriage (Phenix) : 1.13  
EDS : 2.13.1  
buster-report : 1.1.7 (2018)  
Percentile statistics : 20191225.v01 (using entries in the PDB archive December 25th 2019)  
Refmac : 5.8.0158  
CCP4 : 7.0.044 (Gargrove)  
Ideal geometry (proteins) : Engh & Huber (2001)  
Ideal geometry (DNA, RNA) : Parkinson et al. (1996)  
Validation Pipeline (wwPDB-VP) : 2.13.1

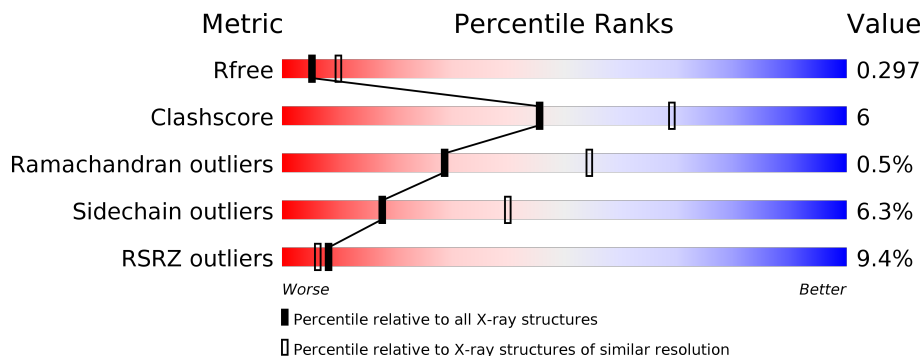
# 1 Overall quality at a glance

The following experimental techniques were used to determine the structure:

*X-RAY DIFFRACTION*

The reported resolution of this entry is 2.70 Å.

Percentile scores (ranging between 0-100) for global validation metrics of the entry are shown in the following graphic. The table shows the number of entries on which the scores are based.



Metric	Whole archive (#Entries)	Similar resolution (#Entries, resolution range(Å))
$R_{free}$	130704	2808 (2.70-2.70)
Clashscore	141614	3122 (2.70-2.70)
Ramachandran outliers	138981	3069 (2.70-2.70)
Sidechain outliers	138945	3069 (2.70-2.70)
RSRZ outliers	127900	2737 (2.70-2.70)

The table below summarises the geometric issues observed across the polymeric chains and their fit to the electron density. The red, orange, yellow and green segments on the lower bar indicate the fraction of residues that contain outliers for  $\geq 3$ , 2, 1 and 0 types of geometric quality criteria respectively. A grey segment represents the fraction of residues that are not modelled. The numeric value for each fraction is indicated below the corresponding segment, with a dot representing fractions  $\leq 5\%$ . The upper red bar (where present) indicates the fraction of residues that have poor fit to the electron density. The numeric value is given above the bar.

Mol	Chain	Length	Quality of chain
1	A	533	 11% 79% 15% • 5%
1	B	533	 6% 77% 16% • 5%

## 2 Entry composition [i](#)

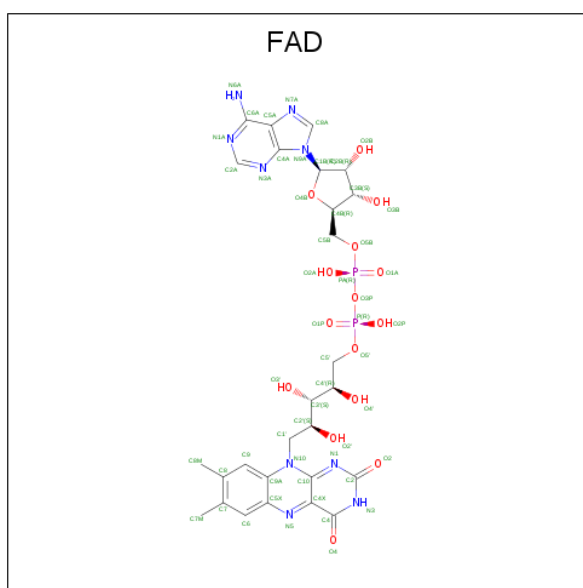
There are 7 unique types of molecules in this entry. The entry contains 8329 atoms, of which 0 are hydrogens and 0 are deuteriums.

In the tables below, the ZeroOcc column contains the number of atoms modelled with zero occupancy, the AltConf column contains the number of residues with at least one atom in alternate conformation and the Trace column contains the number of residues modelled with at most 2 atoms.

- Molecule 1 is a protein called Ancestral Flavin-containing monooxygenase 5.

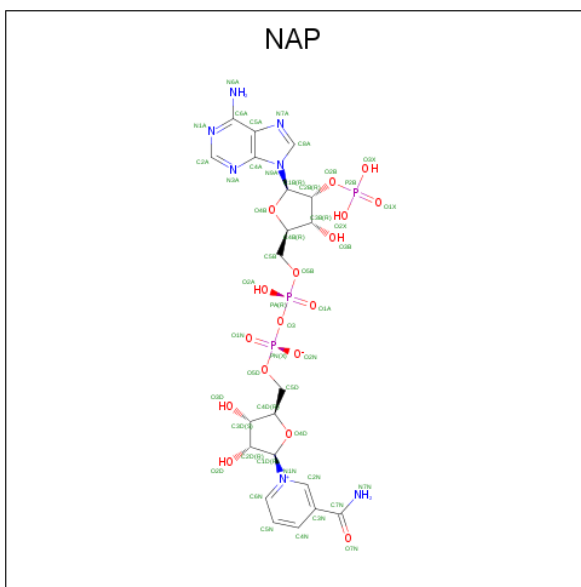
Mol	Chain	Residues	Atoms					ZeroOcc	AltConf	Trace
			Total	C	N	O	S			
1	A	504	Total 4010	2568	680	740	22	0	0	0
1	B	504	Total 4010	2568	680	740	22	0	0	0

- Molecule 2 is FLAVIN-ADENINE DINUCLEOTIDE (three-letter code: FAD) (formula:  $C_{27}H_{33}N_9O_{15}P_2$ ).



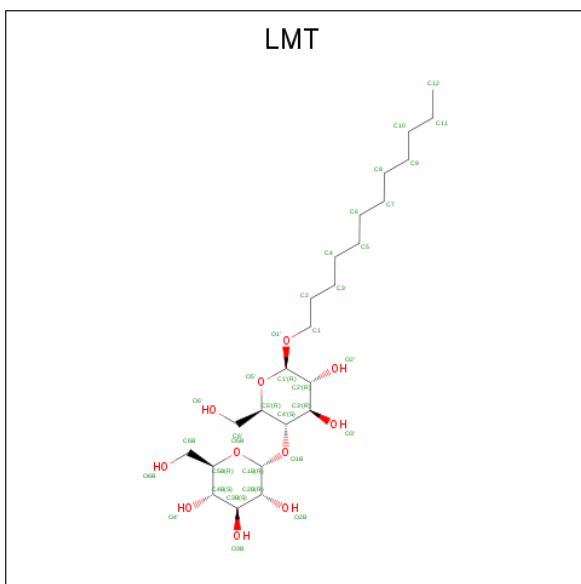
Mol	Chain	Residues	Atoms					ZeroOcc	AltConf
			Total	C	N	O	P		
2	A	1	Total 53	27	9	15	2	0	0
2	B	1	Total 53	27	9	15	2	0	0

- Molecule 3 is NADP NICOTINAMIDE-ADENINE-DINUCLEOTIDE PHOSPHATE (three-letter code: NAP) (formula:  $C_{21}H_{28}N_7O_{17}P_3$ ).



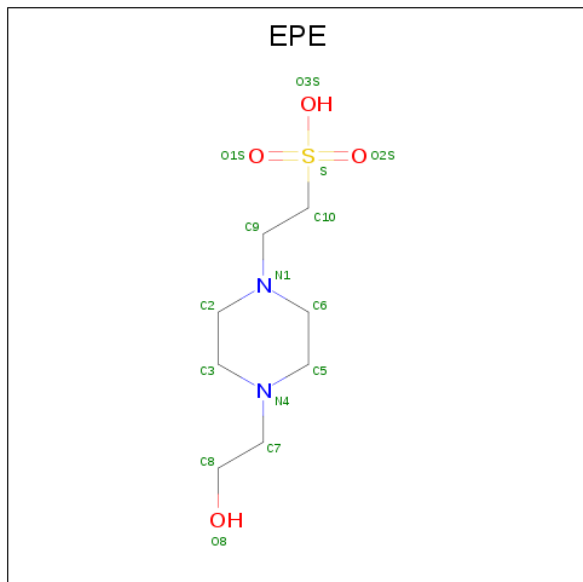
Mol	Chain	Residues	Atoms				ZeroOcc	AltConf	
			Total	C	N	O			P
3	A	1	48	21	7	17	3	0	0
3	B	1	48	21	7	17	3	0	0

- Molecule 4 is DODECYL-BETA-D-MALTOSE (three-letter code: LMT) (formula:  $C_{24}H_{46}O_{11}$ ).



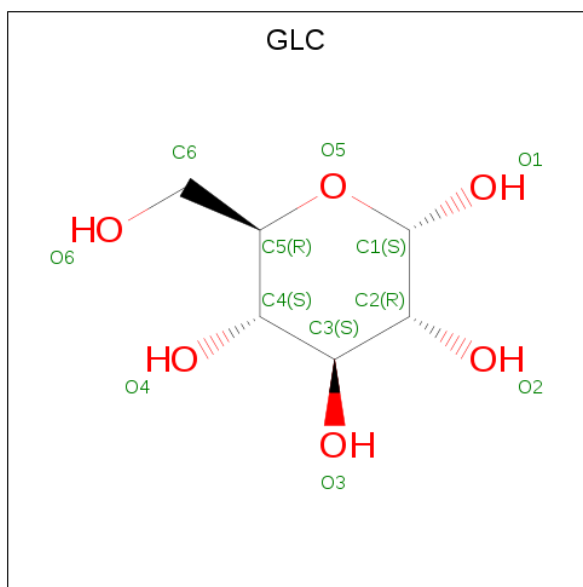
Mol	Chain	Residues	Atoms		ZeroOcc	AltConf
			Total	C O		
4	A	1	26	15 11	0	0

- Molecule 5 is 4-(2-HYDROXYETHYL)-1-PIPERAZINE ETHANESULFONIC ACID (three-letter code: EPE) (formula: C<sub>8</sub>H<sub>18</sub>N<sub>2</sub>O<sub>4</sub>S).



Mol	Chain	Residues	Atoms					ZeroOcc	AltConf	
			Total	C	N	O	S			
5	A	1	Total	15	8	2	4	1	0	0
5	B	1	Total	15	8	2	4	1	0	0

- Molecule 6 is alpha-D-glucopyranose (three-letter code: GLC) (formula: C<sub>6</sub>H<sub>12</sub>O<sub>6</sub>).



Mol	Chain	Residues	Atoms			ZeroOcc	AltConf
6	A	1	Total	C	O	0	0
			12	6	6		
6	A	1	Total	C	O	0	0
			12	6	6		

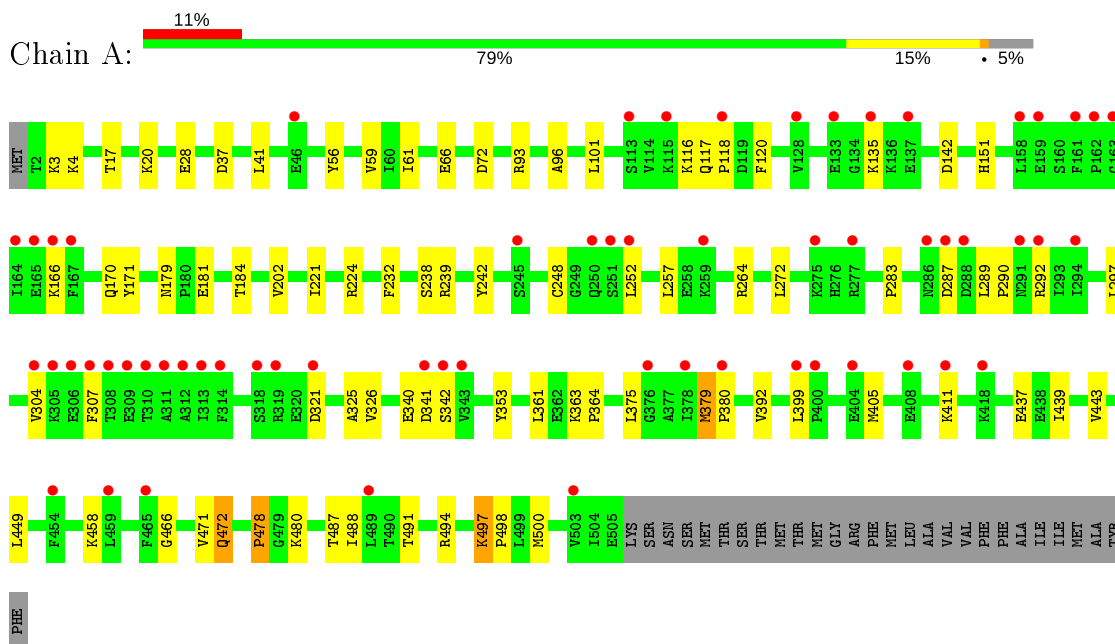
- Molecule 7 is water.

Mol	Chain	Residues	Atoms		ZeroOcc	AltConf
7	A	17	Total	O	0	0
			17	17		
7	B	10	Total	O	0	0
			10	10		

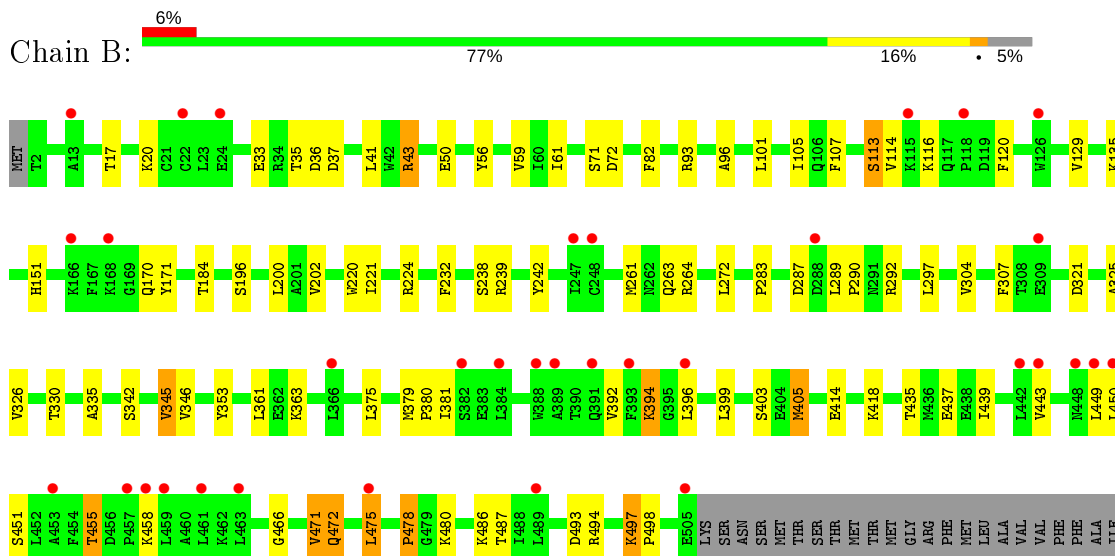
### 3 Residue-property plots [i](#)

These plots are drawn for all protein, RNA, DNA and oligosaccharide chains in the entry. The first graphic for a chain summarises the proportions of the various outlier classes displayed in the second graphic. The second graphic shows the sequence view annotated by issues in geometry and electron density. Residues are color-coded according to the number of geometric quality criteria for which they contain at least one outlier: green = 0, yellow = 1, orange = 2 and red = 3 or more. A red dot above a residue indicates a poor fit to the electron density ( $RSRZ > 2$ ). Stretches of 2 or more consecutive residues without any outlier are shown as a green connector. Residues present in the sample, but not in the model, are shown in grey.

- Molecule 1: Ancestral Flavin-containing monooxygenase 5



- Molecule 1: Ancestral Flavin-containing monooxygenase 5



ILE  
MET  
ALA  
TYR  
PHE



## 4 Data and refinement statistics

Property	Value	Source
Space group	P 2 21 21	Depositor
Cell constants a, b, c, $\alpha$ , $\beta$ , $\gamma$	96.78Å 100.07Å 143.15Å 90.00° 90.00° 90.00°	Depositor
Resolution (Å)	49.00 – 2.70 49.89 – 2.70	Depositor EDS
% Data completeness (in resolution range)	99.7 (49.00-2.70) 99.8 (49.89-2.70)	Depositor EDS
$R_{merge}$	0.11	Depositor
$R_{sym}$	(Not available)	Depositor
$\langle I/\sigma(I) \rangle$ <sup>1</sup>	1.33 (at 2.69Å)	Xtrriage
Refinement program	REFMAC 5.8.0253	Depositor
R, $R_{free}$	0.222 , 0.295 0.227 , 0.297	Depositor DCC
$R_{free}$ test set	1964 reflections (5.06%)	wwPDB-VP
Wilson B-factor (Å <sup>2</sup> )	74.0	Xtrriage
Anisotropy	0.205	Xtrriage
Bulk solvent $k_{sol}$ (e/Å <sup>3</sup> ), $B_{sol}$ (Å <sup>2</sup> )	0.28 , 38.0	EDS
L-test for twinning <sup>2</sup>	$\langle  L  \rangle = 0.50$ , $\langle L^2 \rangle = 0.33$	Xtrriage
Estimated twinning fraction	0.014 for k,h,-l	Xtrriage
$F_o, F_c$ correlation	0.90	EDS
Total number of atoms	8329	wwPDB-VP
Average B, all atoms (Å <sup>2</sup> )	90.0	wwPDB-VP

Xtrriage's analysis on translational NCS is as follows: *The largest off-origin peak in the Patterson function is 4.51% of the height of the origin peak. No significant pseudotranslation is detected.*

<sup>1</sup>Intensities estimated from amplitudes.

<sup>2</sup>Theoretical values of  $\langle |L| \rangle$ ,  $\langle L^2 \rangle$  for acentric reflections are 0.5, 0.333 respectively for untwinned datasets, and 0.375, 0.2 for perfectly twinned datasets.

## 5 Model quality [i](#)

### 5.1 Standard geometry [i](#)

Bond lengths and bond angles in the following residue types are not validated in this section: EPE, NAP, GLC, LMT, FAD

The Z score for a bond length (or angle) is the number of standard deviations the observed value is removed from the expected value. A bond length (or angle) with  $|Z| > 5$  is considered an outlier worth inspection. RMSZ is the root-mean-square of all Z scores of the bond lengths (or angles).

Mol	Chain	Bond lengths		Bond angles	
		RMSZ	# Z  >5	RMSZ	# Z  >5
1	A	0.68	0/4104	0.84	0/5539
1	B	0.69	0/4104	0.86	0/5539
All	All	0.69	0/8208	0.85	0/11078

There are no bond length outliers.

There are no bond angle outliers.

There are no chirality outliers.

There are no planarity outliers.

### 5.2 Too-close contacts [i](#)

In the following table, the Non-H and H(model) columns list the number of non-hydrogen atoms and hydrogen atoms in the chain respectively. The H(added) column lists the number of hydrogen atoms added and optimized by MolProbity. The Clashes column lists the number of clashes within the asymmetric unit, whereas Symm-Clashes lists symmetry related clashes.

Mol	Chain	Non-H	H(model)	H(added)	Clashes	Symm-Clashes
1	A	4010	0	4007	44	0
1	B	4010	0	4007	57	0
2	A	53	0	31	7	0
2	B	53	0	31	10	0
3	A	48	0	25	3	0
3	B	48	0	25	5	0
4	A	26	0	25	0	0
5	A	15	0	18	1	0
5	B	15	0	18	0	0
6	A	24	0	24	0	0
7	A	17	0	0	0	0

*Continued on next page...*

*Continued from previous page...*

Mol	Chain	Non-H	H(model)	H(added)	Clashes	Symm-Clashes
7	B	10	0	0	0	0
All	All	8329	0	8211	106	0

The all-atom clashscore is defined as the number of clashes found per 1000 atoms (including hydrogen atoms). The all-atom clashscore for this structure is 6.

The worst 5 of 106 close contacts within the same asymmetric unit are listed below, sorted by their clash magnitude.

Atom-1	Atom-2	Interatomic distance (Å)	Clash overlap (Å)
1:A:488:ILE:O	1:A:491:THR:HG22	1.91	0.69
2:A:601:FAD:C6	3:A:602:NAP:C2N	2.74	0.66
1:B:151:HIS:CD2	2:B:601:FAD:H1'1	2.31	0.65
1:A:20:LYS:NZ	1:A:72:ASP:OD2	2.30	0.65
1:B:335:ALA:HA	1:B:345:VAL:HG21	1.78	0.64

There are no symmetry-related clashes.

## 5.3 Torsion angles [i](#)

### 5.3.1 Protein backbone [i](#)

In the following table, the Percentiles column shows the percent Ramachandran outliers of the chain as a percentile score with respect to all X-ray entries followed by that with respect to entries of similar resolution.

The Analysed column shows the number of residues for which the backbone conformation was analysed, and the total number of residues.

Mol	Chain	Analysed	Favoured	Allowed	Outliers	Percentiles
1	A	502/533 (94%)	477 (95%)	23 (5%)	2 (0%)	34 60
1	B	502/533 (94%)	478 (95%)	21 (4%)	3 (1%)	25 50
All	All	1004/1066 (94%)	955 (95%)	44 (4%)	5 (0%)	29 54

All (5) Ramachandran outliers are listed below:

Mol	Chain	Res	Type
1	A	480	LYS
1	B	480	LYS
1	B	394	LYS

*Continued on next page...*

*Continued from previous page...*

Mol	Chain	Res	Type
1	A	478	PRO
1	B	478	PRO

### 5.3.2 Protein sidechains [i](#)

In the following table, the Percentiles column shows the percent sidechain outliers of the chain as a percentile score with respect to all X-ray entries followed by that with respect to entries of similar resolution.

The Analysed column shows the number of residues for which the sidechain conformation was analysed, and the total number of residues.

Mol	Chain	Analysed	Rotameric	Outliers	Percentiles	
1	A	441/466 (95%)	417 (95%)	24 (5%)	22	47
1	B	441/466 (95%)	409 (93%)	32 (7%)	14	33
All	All	882/932 (95%)	826 (94%)	56 (6%)	18	40

5 of 56 residues with a non-rotameric sidechain are listed below:

Mol	Chain	Res	Type
1	B	43	ARG
1	B	202	VAL
1	B	475	LEU
1	B	50	GLU
1	B	114	VAL

Some sidechains can be flipped to improve hydrogen bonding and reduce clashes. 5 of 12 such sidechains are listed below:

Mol	Chain	Res	Type
1	A	429	GLN
1	A	472	GLN
1	B	424	GLN
1	A	424	GLN
1	B	151	HIS

### 5.3.3 RNA [i](#)

There are no RNA molecules in this entry.

## 5.4 Non-standard residues in protein, DNA, RNA chains [i](#)

There are no non-standard protein/DNA/RNA residues in this entry.

## 5.5 Carbohydrates [i](#)

There are no monosaccharides in this entry.

## 5.6 Ligand geometry [i](#)

9 ligands are modelled in this entry.

In the following table, the Counts columns list the number of bonds (or angles) for which Mogul statistics could be retrieved, the number of bonds (or angles) that are observed in the model and the number of bonds (or angles) that are defined in the Chemical Component Dictionary. The Link column lists molecule types, if any, to which the group is linked. The Z score for a bond length (or angle) is the number of standard deviations the observed value is removed from the expected value. A bond length (or angle) with  $|Z| > 2$  is considered an outlier worth inspection. RMSZ is the root-mean-square of all Z scores of the bond lengths (or angles).

Mol	Type	Chain	Res	Link	Bond lengths			Bond angles		
					Counts	RMSZ	# Z  > 2	Counts	RMSZ	# Z  > 2
4	LMT	A	603	-	27,27,36	1.15	1 (3%)	37,38,47	1.61	10 (27%)
5	EPE	B	603	-	15,15,15	2.13	1 (6%)	18,20,20	1.55	2 (11%)
2	FAD	B	601	-	51,58,58	1.09	2 (3%)	60,89,89	1.79	9 (15%)
6	GLC	A	605	-	12,12,12	1.28	1 (8%)	17,17,17	1.27	3 (17%)
5	EPE	A	604	-	15,15,15	2.38	1 (6%)	18,20,20	1.64	4 (22%)
2	FAD	A	601	-	51,58,58	1.10	2 (3%)	60,89,89	1.80	8 (13%)
3	NAP	B	602	-	45,52,52	1.03	2 (4%)	56,80,80	1.51	10 (17%)
3	NAP	A	602	-	45,52,52	1.03	4 (8%)	56,80,80	1.37	7 (12%)
6	GLC	A	606	-	12,12,12	0.86	0	17,17,17	1.17	2 (11%)

In the following table, the Chirals column lists the number of chiral outliers, the number of chiral centers analysed, the number of these observed in the model and the number defined in the Chemical Component Dictionary. Similar counts are reported in the Torsion and Rings columns. '-' means no outliers of that kind were identified.

Mol	Type	Chain	Res	Link	Chirals	Torsions	Rings
4	LMT	A	603	-	-	9/12/52/61	0/2/2/2
5	EPE	B	603	-	-	6/9/19/19	0/1/1/1
2	FAD	B	601	-	-	5/30/50/50	0/6/6/6

*Continued on next page...*

Continued from previous page...

Mol	Type	Chain	Res	Link	Chirals	Torsions	Rings
6	GLC	A	605	-	-	2/2/22/22	0/1/1/1
5	EPE	A	604	-	-	2/9/19/19	0/1/1/1
2	FAD	A	601	-	-	10/30/50/50	0/6/6/6
3	NAP	B	602	-	-	6/31/67/67	0/5/5/5
3	NAP	A	602	-	-	13/31/67/67	0/5/5/5
6	GLC	A	606	-	-	2/2/22/22	0/1/1/1

The worst 5 of 14 bond length outliers are listed below:

Mol	Chain	Res	Type	Atoms	Z	Observed(Å)	Ideal(Å)
5	A	604	EPE	C10-S	-8.44	1.65	1.77
5	B	603	EPE	C10-S	-7.55	1.66	1.77
2	B	601	FAD	C4X-C10	5.64	1.44	1.38
2	A	601	FAD	C4X-C10	5.32	1.44	1.38
4	A	603	LMT	O1'-C1'	3.71	1.46	1.40

The worst 5 of 55 bond angle outliers are listed below:

Mol	Chain	Res	Type	Atoms	Z	Observed(°)	Ideal(°)
2	A	601	FAD	C4-N3-C2	8.04	121.93	115.14
2	B	601	FAD	C4-N3-C2	7.74	121.68	115.14
2	A	601	FAD	C4-C4X-C10	-5.93	116.02	119.95
2	B	601	FAD	C4-C4X-C10	-5.59	116.25	119.95
2	B	601	FAD	C10-C4X-N5	4.96	124.69	121.26

There are no chirality outliers.

5 of 55 torsion outliers are listed below:

Mol	Chain	Res	Type	Atoms
4	A	603	LMT	C2'-C1'-O1'-C1
4	A	603	LMT	O5'-C1'-O1'-C1
5	B	603	EPE	C9-C10-S-O1S
5	B	603	EPE	C9-C10-S-O2S
2	B	601	FAD	C5B-O5B-PA-O1A

There are no ring outliers.

5 monomers are involved in 21 short contacts:

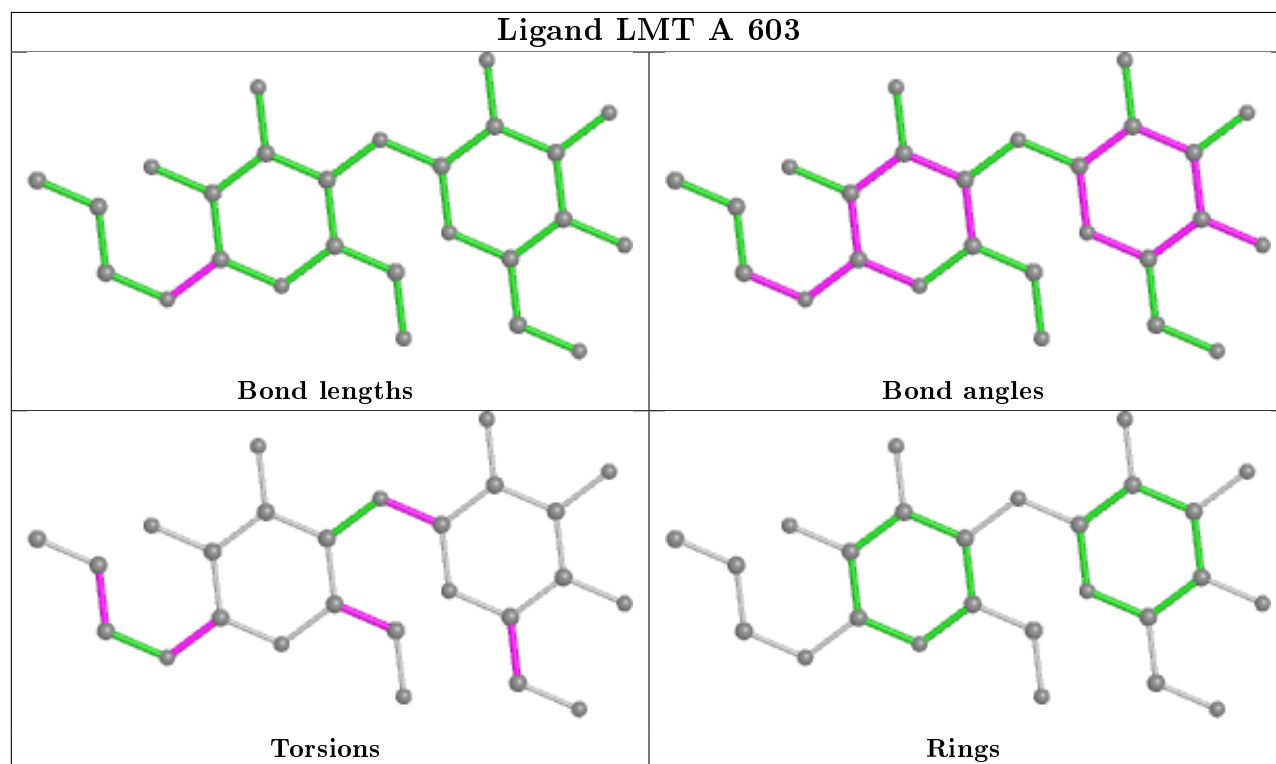
Mol	Chain	Res	Type	Clashes	Symm-Clashes
2	B	601	FAD	10	0

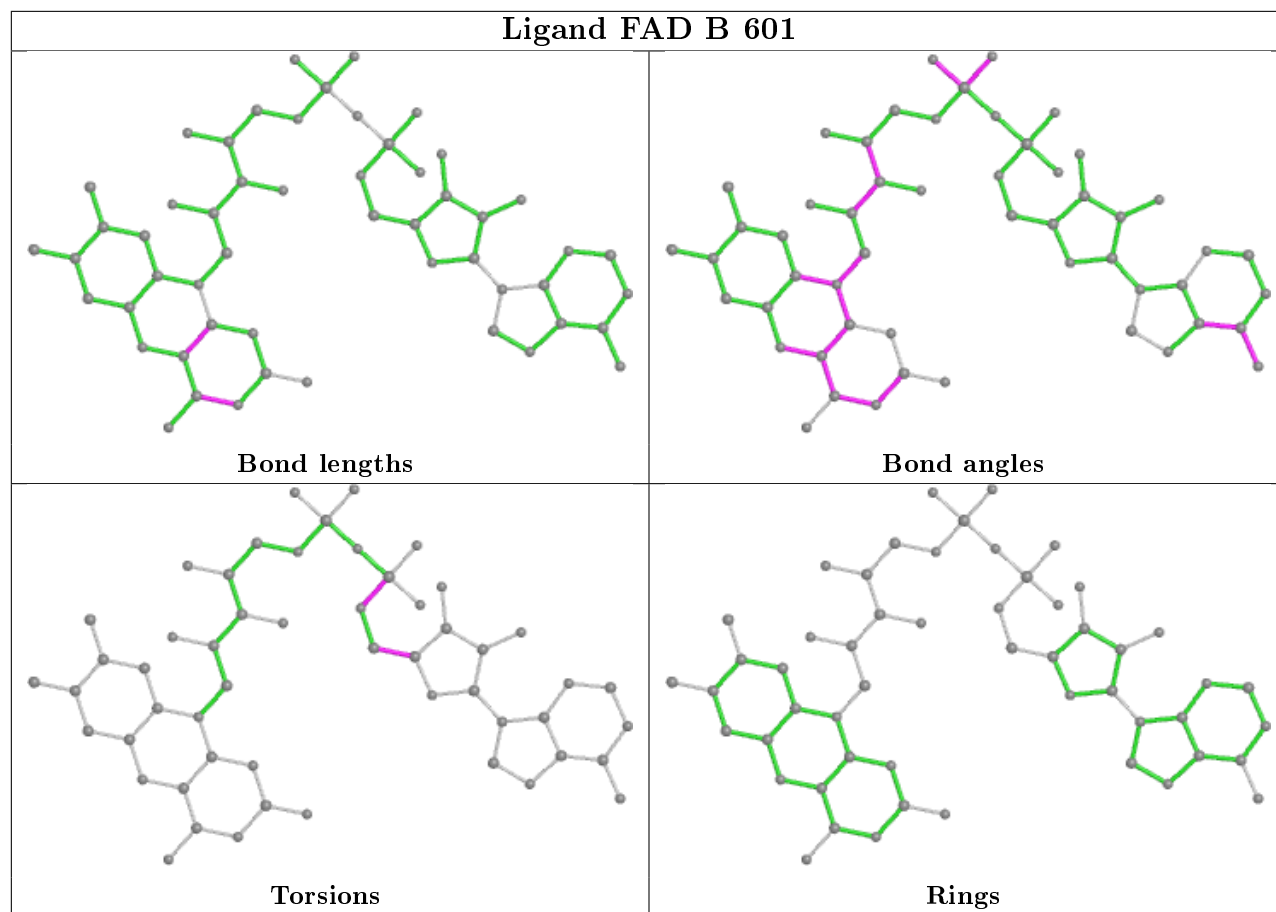
Continued on next page...

Continued from previous page...

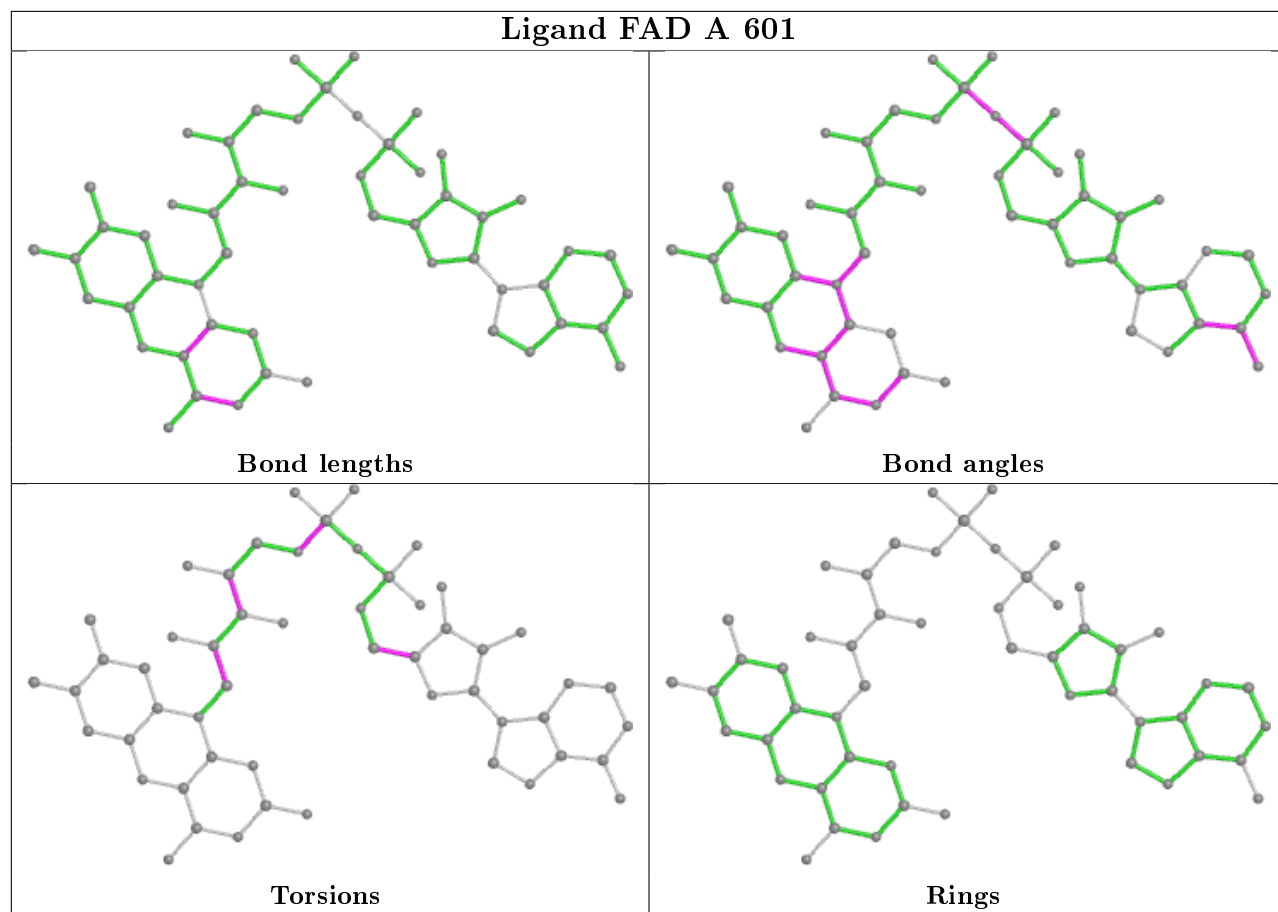
Mol	Chain	Res	Type	Clashes	Symm-Clashes
5	A	604	EPE	1	0
2	A	601	FAD	7	0
3	B	602	NAP	5	0
3	A	602	NAP	3	0

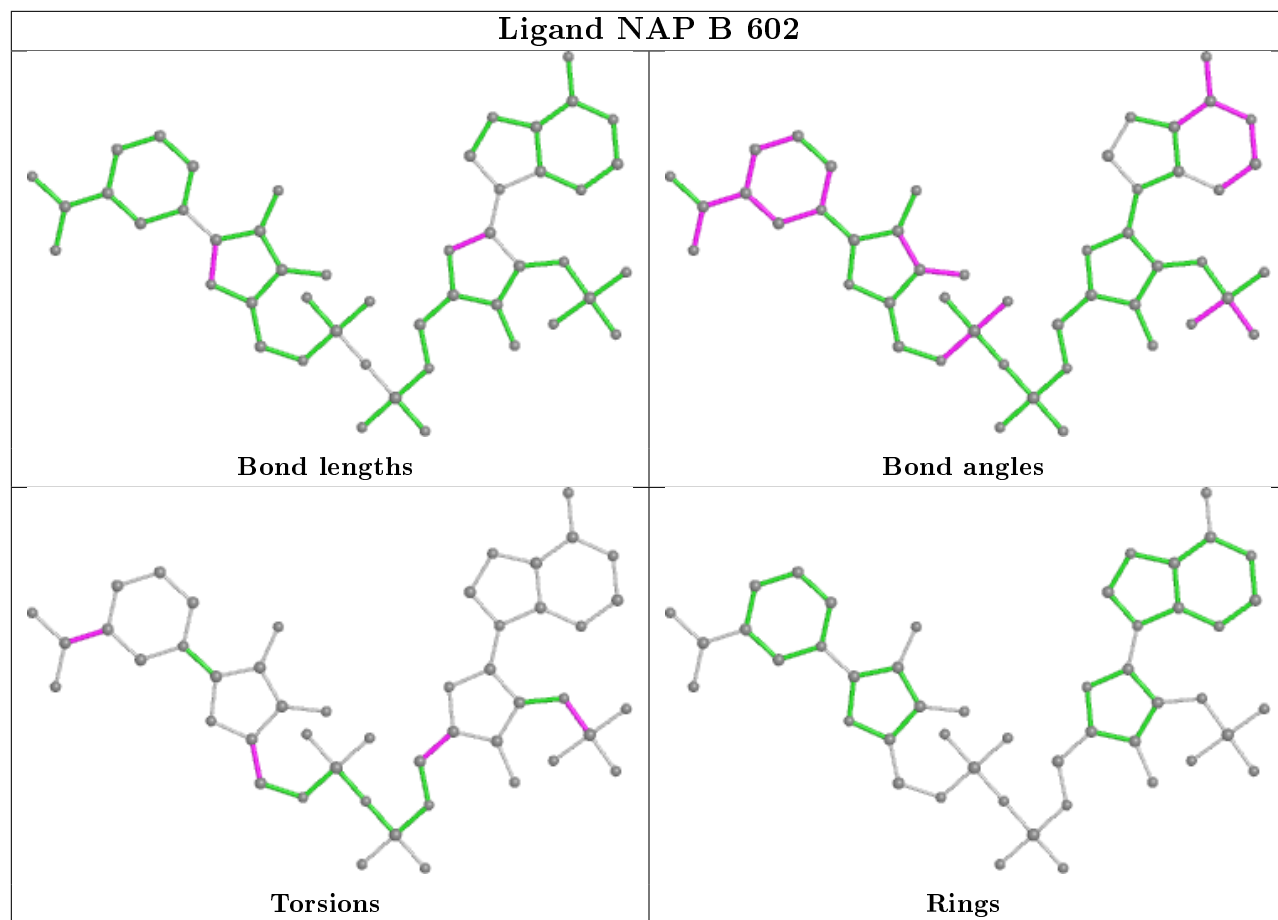
The following is a two-dimensional graphical depiction of Mogul quality analysis of bond lengths, bond angles, torsion angles, and ring geometry for all instances of the Ligand of Interest. In addition, ligands with molecular weight > 250 and outliers as shown on the validation Tables will also be included. For torsion angles, if less than 5% of the Mogul distribution of torsion angles is within 10 degrees of the torsion angle in question, then that torsion angle is considered an outlier. Any bond that is central to one or more torsion angles identified as an outlier by Mogul will be highlighted in the graph. For rings, the root-mean-square deviation (RMSD) between the ring in question and similar rings identified by Mogul is calculated over all ring torsion angles. If the average RMSD is greater than 60 degrees and the minimal RMSD between the ring in question and any Mogul-identified rings is also greater than 60 degrees, then that ring is considered an outlier. The outliers are highlighted in purple. The color gray indicates Mogul did not find sufficient equivalents in the CSD to analyse the geometry.

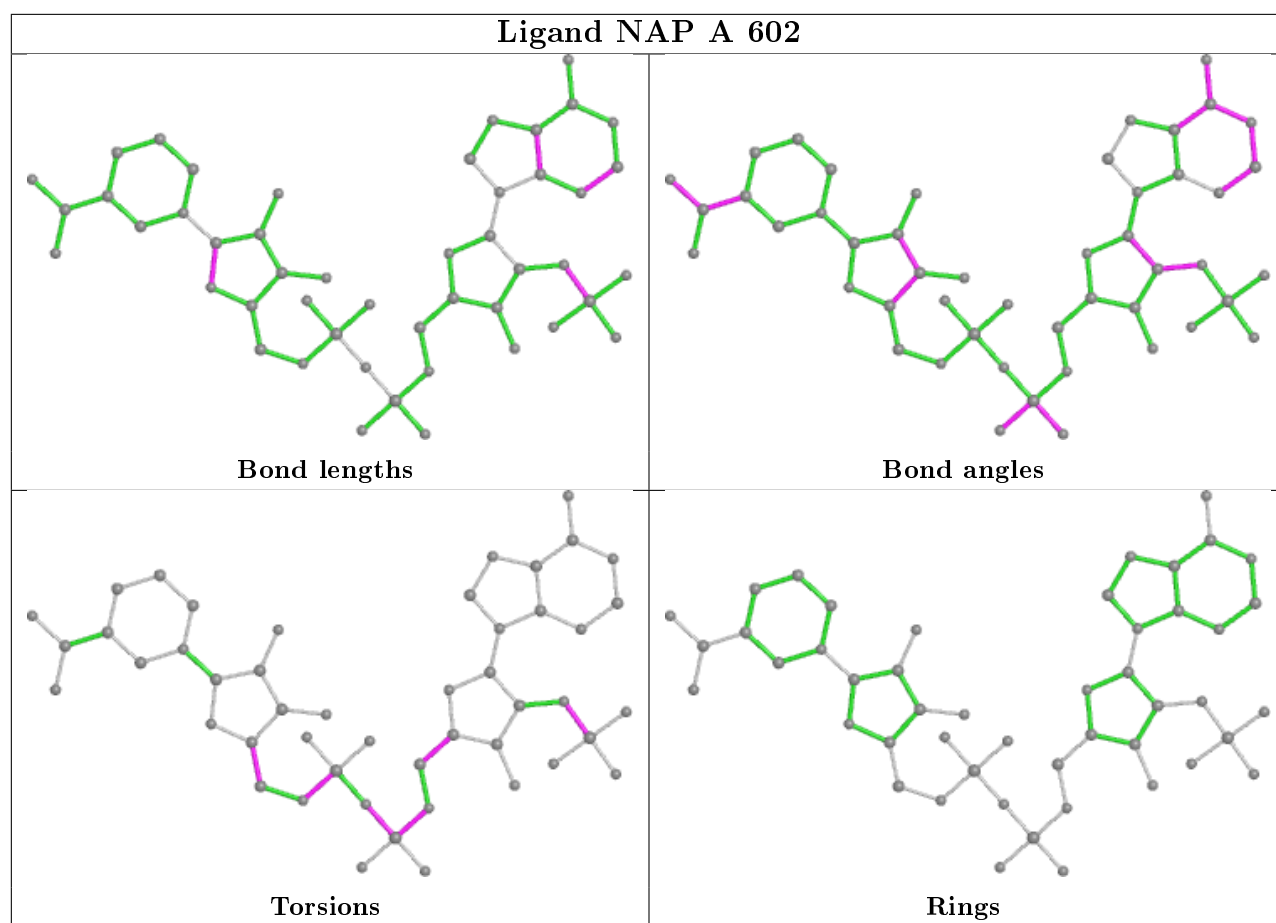












## 5.7 Other polymers [\(i\)](#)

There are no such residues in this entry.

## 5.8 Polymer linkage issues [\(i\)](#)

There are no chain breaks in this entry.

## 6 Fit of model and data [i](#)

### 6.1 Protein, DNA and RNA chains [i](#)

In the following table, the column labelled '#RSRZ > 2' contains the number (and percentage) of RSRZ outliers, followed by percent RSRZ outliers for the chain as percentile scores relative to all X-ray entries and entries of similar resolution. The OWAB column contains the minimum, median, 95<sup>th</sup> percentile and maximum values of the occupancy-weighted average B-factor per residue. The column labelled 'Q < 0.9' lists the number of (and percentage) of residues with an average occupancy less than 0.9.

Mol	Chain	Analysed	<RSRZ>	#RSRZ > 2	OWAB(Å <sup>2</sup> )	Q < 0.9
1	A	504/533 (94%)	0.54	61 (12%) <b>4</b> <b>3</b>	59, 83, 114, 132	0
1	B	504/533 (94%)	0.25	34 (6%) <b>17</b> <b>16</b>	61, 93, 122, 150	0
All	All	1008/1066 (94%)	0.39	95 (9%) <b>8</b> <b>6</b>	59, 87, 119, 150	0

The worst 5 of 95 RSRZ outliers are listed below:

Mol	Chain	Res	Type	RSRZ
1	B	505	GLU	8.2
1	A	307	PHE	8.1
1	A	312	ALA	7.4
1	A	164	ILE	6.3
1	B	449	LEU	6.0

### 6.2 Non-standard residues in protein, DNA, RNA chains [i](#)

There are no non-standard protein/DNA/RNA residues in this entry.

### 6.3 Carbohydrates [i](#)

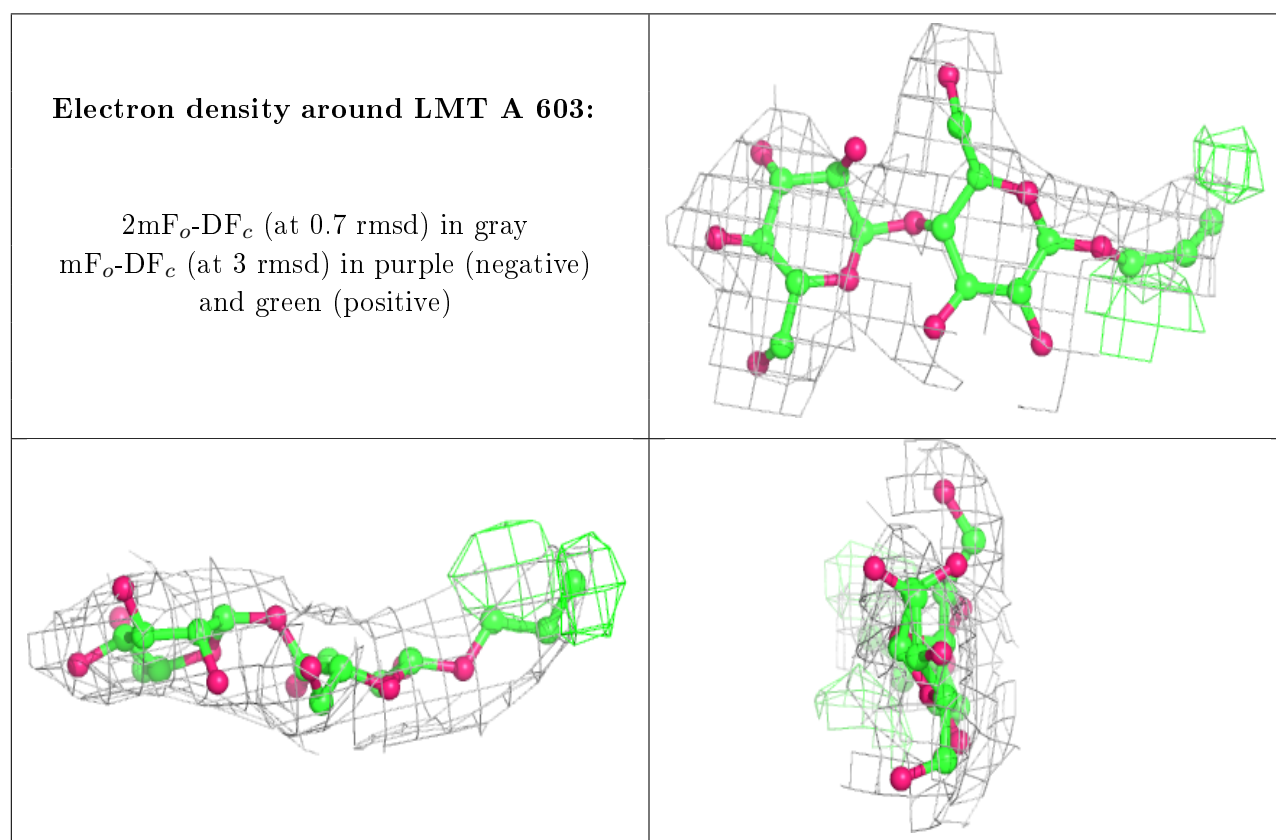
There are no monosaccharides in this entry.

### 6.4 Ligands [i](#)

In the following table, the Atoms column lists the number of modelled atoms in the group and the number defined in the chemical component dictionary. The B-factors column lists the minimum, median, 95<sup>th</sup> percentile and maximum values of B factors of atoms in the group. The column labelled 'Q < 0.9' lists the number of atoms with occupancy less than 0.9.

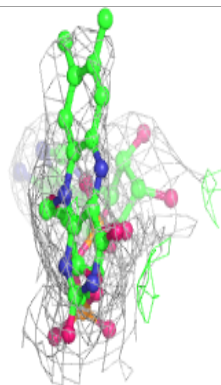
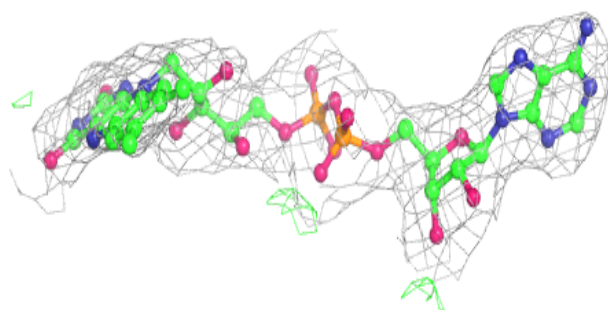
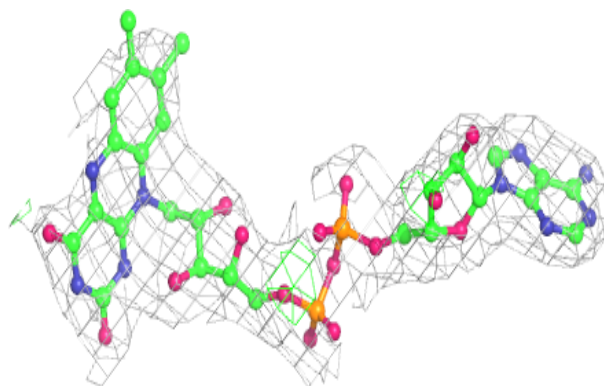
Mol	Type	Chain	Res	Atoms	RSCC	RSR	B-factors( $\text{\AA}^2$ )	Q<0.9
4	LMT	A	603	26/35	0.63	0.19	105,146,169,176	0
6	GLC	A	606	12/12	0.68	0.36	111,131,145,153	0
6	GLC	A	605	12/12	0.77	0.22	107,121,135,138	0
5	EPE	A	604	15/15	0.80	0.45	68,99,158,165	0
5	EPE	B	603	15/15	0.87	0.17	100,121,145,147	0
2	FAD	A	601	53/53	0.93	0.17	67,83,121,126	0
3	NAP	A	602	48/48	0.94	0.20	63,74,83,85	0
2	FAD	B	601	53/53	0.94	0.17	72,99,147,161	0
3	NAP	B	602	48/48	0.97	0.14	57,73,91,101	0

The following is a graphical depiction of the model fit to experimental electron density of all instances of the Ligand of Interest. In addition, ligands with molecular weight > 250 and outliers as shown on the geometry validation Tables will also be included. Each fit is shown from different orientation to approximate a three-dimensional view.

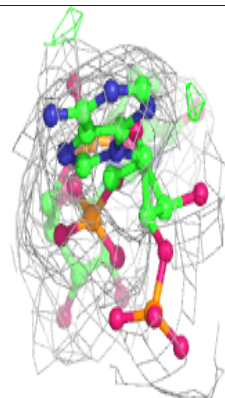
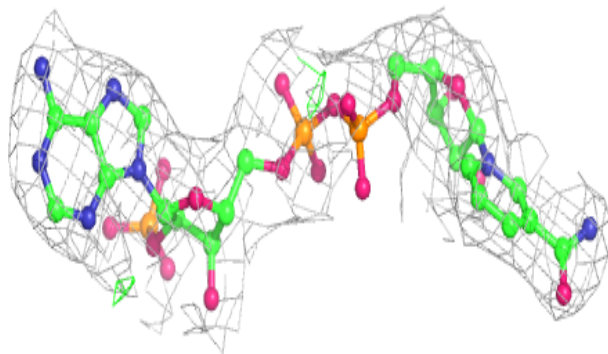
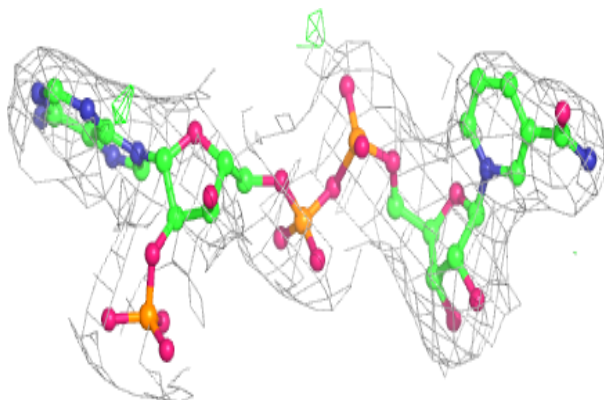


**Electron density around FAD A 601:**

$2mF_o-DF_c$  (at 0.7 rmsd) in gray  
 $mF_o-DF_c$  (at 3 rmsd) in purple (negative)  
and green (positive)

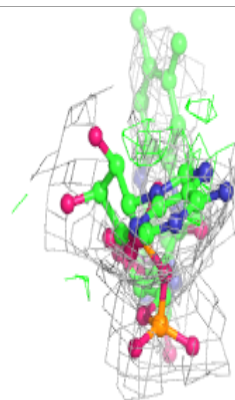
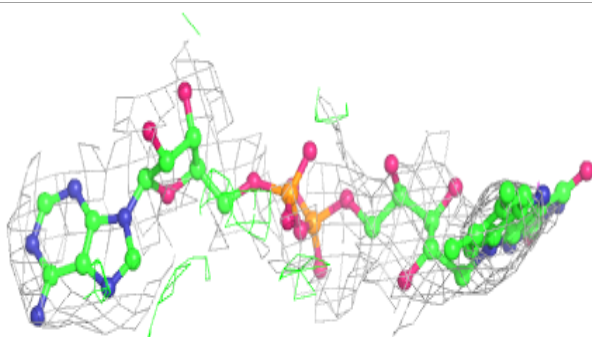
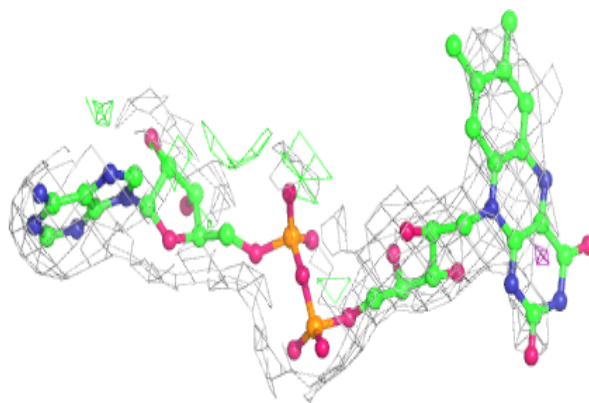
**Electron density around NAP A 602:**

$2mF_o-DF_c$  (at 0.7 rmsd) in gray  
 $mF_o-DF_c$  (at 3 rmsd) in purple (negative)  
and green (positive)

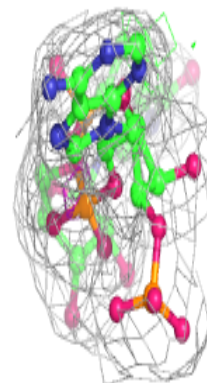
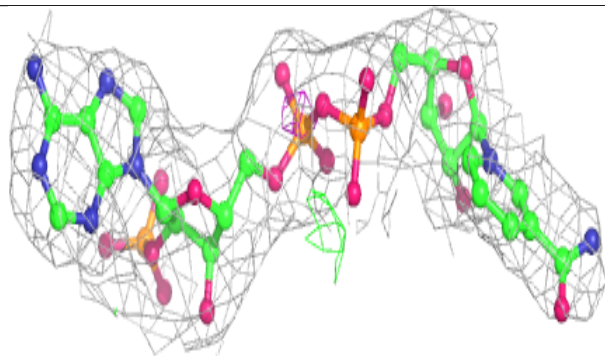
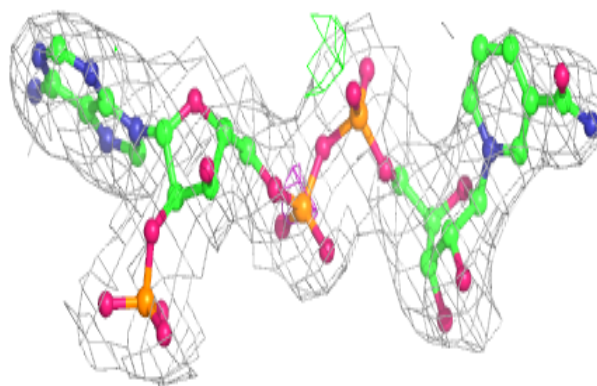


**Electron density around FAD B 601:**

$2mF_o-DF_c$  (at 0.7 rmsd) in gray  
 $mF_o-DF_c$  (at 3 rmsd) in purple (negative)  
and green (positive)

**Electron density around NAP B 602:**

$2mF_o-DF_c$  (at 0.7 rmsd) in gray  
 $mF_o-DF_c$  (at 3 rmsd) in purple (negative)  
and green (positive)



## 6.5 Other polymers

There are no such residues in this entry.