



wwPDB X-ray Structure Validation Summary Report ⓘ

Aug 15, 2023 – 07:07 PM EDT

PDB ID : 1SK6
Title : Crystal structure of the adenylyl cyclase domain of anthrax edema factor (EF) in complex with calmodulin, 3',5' cyclic AMP (cAMP), and pyrophosphate
Authors : Guo, Q.; Shen, Y.; Zhukovskaya, N.L.; Tang, W.J.
Deposited on : 2004-03-04
Resolution : 3.20 Å(reported)

This is a wwPDB X-ray Structure Validation Summary Report for a publicly released PDB entry.

We welcome your comments at validation@mail.wwpdb.org

A user guide is available at

<https://www.wwpdb.org/validation/2017/XrayValidationReportHelp>

with specific help available everywhere you see the ⓘ symbol.

The types of validation reports are described at

<http://www.wwpdb.org/validation/2017/FAQs#types>.

The following versions of software and data (see [references ⓘ](#)) were used in the production of this report:

MolProbity : 4.02b-467
Mogul : 1.8.5 (274361), CSD as541be (2020)
Xtriage (Phenix) : 1.13
EDS : 2.35
buster-report : 1.1.7 (2018)
Percentile statistics : 20191225.v01 (using entries in the PDB archive December 25th 2019)
Refmac : 5.8.0158
CCP4 : 7.0.044 (Gargrove)
Ideal geometry (proteins) : Engh & Huber (2001)
Ideal geometry (DNA, RNA) : Parkinson et al. (1996)
Validation Pipeline (wwPDB-VP) : 2.35

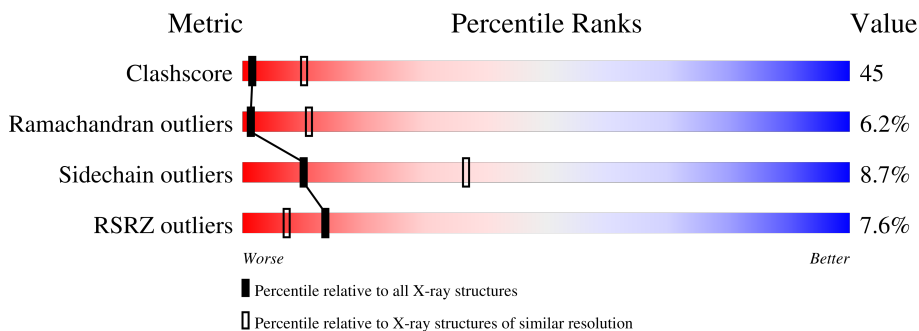
1 Overall quality at a glance

The following experimental techniques were used to determine the structure:

X-RAY DIFFRACTION

The reported resolution of this entry is 3.20 Å.

Percentile scores (ranging between 0-100) for global validation metrics of the entry are shown in the following graphic. The table shows the number of entries on which the scores are based.



Metric	Whole archive (#Entries)	Similar resolution (#Entries, resolution range(Å))
Clashscore	141614	1253 (3.20-3.20)
Ramachandran outliers	138981	1234 (3.20-3.20)
Sidechain outliers	138945	1233 (3.20-3.20)
RSRZ outliers	127900	1095 (3.20-3.20)

The table below summarises the geometric issues observed across the polymeric chains and their fit to the electron density. The red, orange, yellow and green segments of the lower bar indicate the fraction of residues that contain outliers for ≥ 3 , 2, 1 and 0 types of geometric quality criteria respectively. A grey segment represents the fraction of residues that are not modelled. The numeric value for each fraction is indicated below the corresponding segment, with a dot representing fractions $\leq 5\%$. The upper red bar (where present) indicates the fraction of residues that have poor fit to the electron density. The numeric value is given above the bar.

Mol	Chain	Length	Quality of chain
1	A	510	
1	B	510	
1	C	510	
2	D	148	
2	E	148	
2	F	148	

The following table lists non-polymeric compounds, carbohydrate monomers and non-standard residues in protein, DNA, RNA chains that are outliers for geometric or electron-density-fit criteria:

Mol	Type	Chain	Res	Chirality	Geometry	Clashes	Electron density
4	CMP	A	289	X	-	-	-
4	CMP	B	290	X	-	-	-
4	CMP	C	910	X	-	-	-

2 Entry composition [i](#)

There are 6 unique types of molecules in this entry. The entry contains 15050 atoms, of which 0 are hydrogens and 0 are deuteriums.

In the tables below, the ZeroOcc column contains the number of atoms modelled with zero occupancy, the AltConf column contains the number of residues with at least one atom in alternate conformation and the Trace column contains the number of residues modelled with at most 2 atoms.

- Molecule 1 is a protein called Calmodulin-sensitive adenylate cyclase.

Mol	Chain	Residues	Atoms					ZeroOcc	AltConf	Trace
			Total	C	N	O	S			
1	A	481	Total 3924	C 2511	N 668	O 742	S 3	0	0	0
1	B	454	Total 3706	C 2370	N 628	O 705	S 3	0	0	0
1	C	483	Total 3937	C 2519	N 670	O 745	S 3	0	0	0

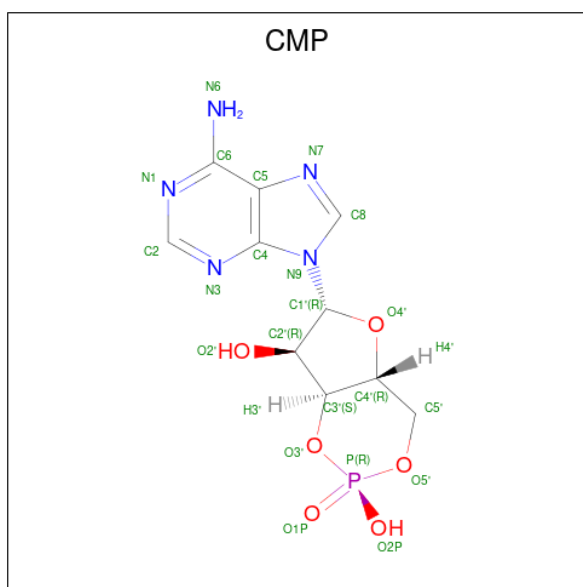
- Molecule 2 is a protein called Calmodulin.

Mol	Chain	Residues	Atoms					ZeroOcc	AltConf	Trace
			Total	C	N	O	S			
2	D	143	Total 1125	C 690	N 181	O 245	S 9	0	0	0
2	E	143	Total 1125	C 690	N 181	O 245	S 9	0	0	0
2	F	143	Total 1125	C 690	N 181	O 245	S 9	0	0	0

- Molecule 3 is YTTERBIUM (III) ION (three-letter code: YB) (formula: Yb).

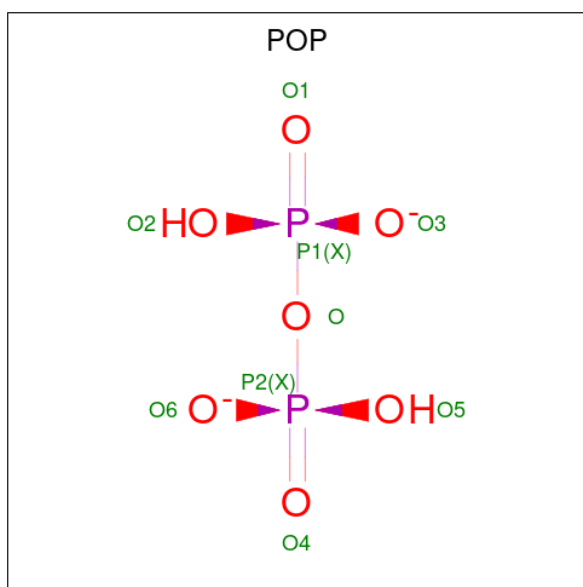
Mol	Chain	Residues	Atoms		ZeroOcc	AltConf
			Total	Yb		
3	A	3	Total 3	Yb 3	0	0
3	B	3	Total 3	Yb 3	0	0
3	C	3	Total 3	Yb 3	0	0

- Molecule 4 is ADENOSINE-3',5'-CYCLIC-MONOPHOSPHATE (three-letter code: CMP) (formula: C₁₀H₁₂N₅O₆P).



Mol	Chain	Residues	Atoms					ZeroOcc	AltConf
			Total	C	N	O	P		
4	A	1	Total	C	N	O	P	0	0
			22	10	5	6	1		
4	B	1	Total	C	N	O	P	0	0
			22	10	5	6	1		
4	C	1	Total	C	N	O	P	0	0
			22	10	5	6	1		

- Molecule 5 is PYROPHOSPHATE 2- (three-letter code: POP) (formula: $\text{H}_2\text{O}_7\text{P}_2$).



Mol	Chain	Residues	Atoms			ZeroOcc	AltConf
			Total	O	P		
5	A	1	Total	O	P	0	0
			9	7	2		

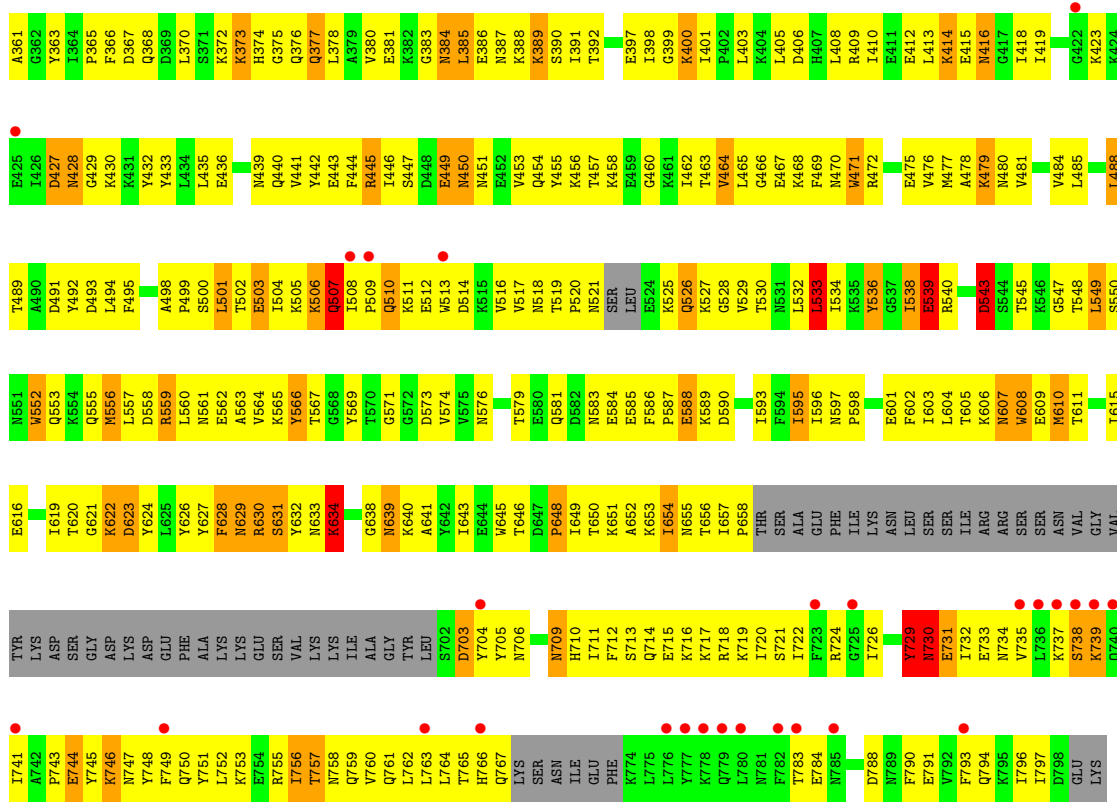
Continued on next page...

Continued from previous page...

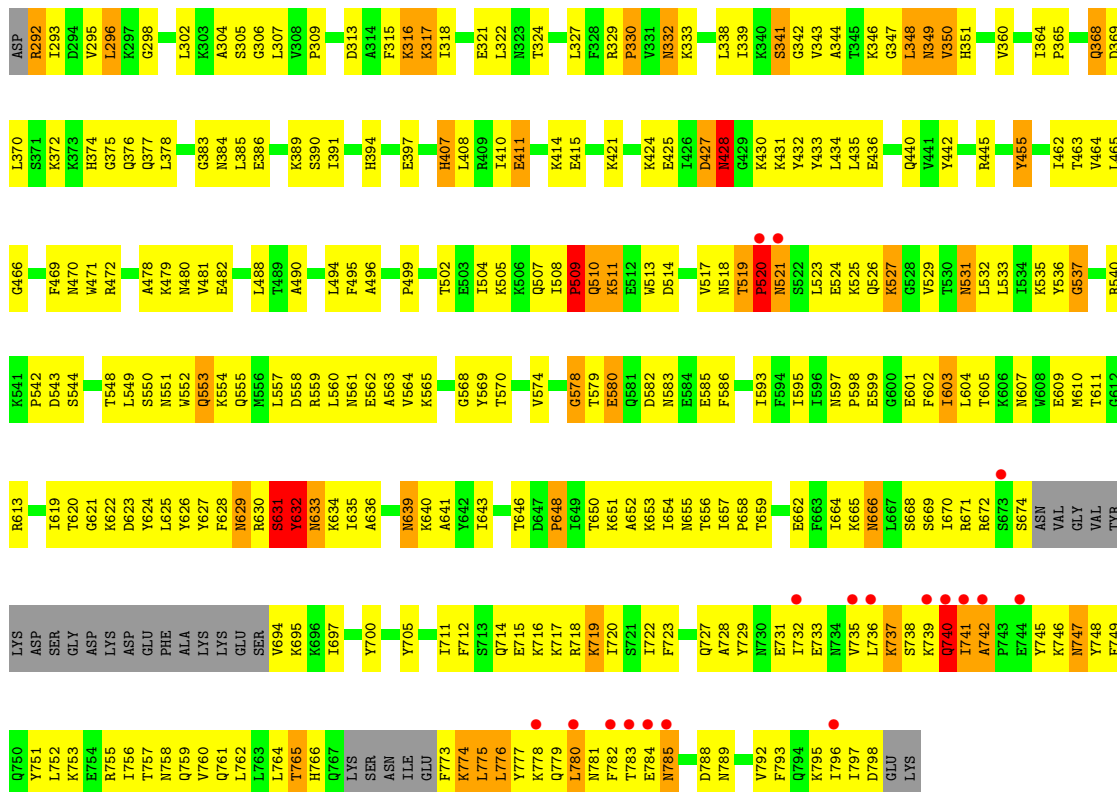
Mol	Chain	Residues	Atoms			ZeroOcc	AltConf
5	B	1	Total	O	P	0	0
			9	7	2		
5	C	1	Total	O	P	0	0
			9	7	2		

- Molecule 6 is CALCIUM ION (three-letter code: CA) (formula: Ca).

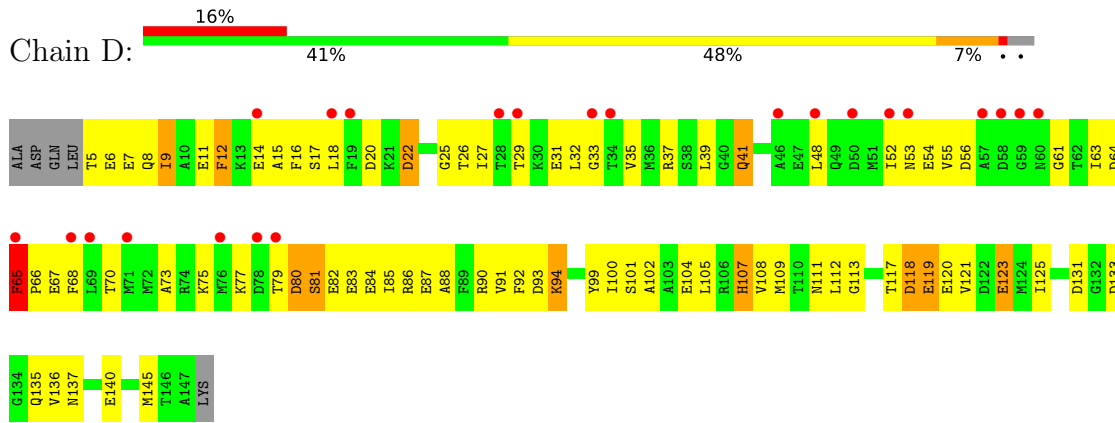
Mol	Chain	Residues	Atoms		ZeroOcc	AltConf
6	D	2	Total	Ca	0	0
			2	2		
6	E	2	Total	Ca	0	0
			2	2		
6	F	2	Total	Ca	0	0
			2	2		



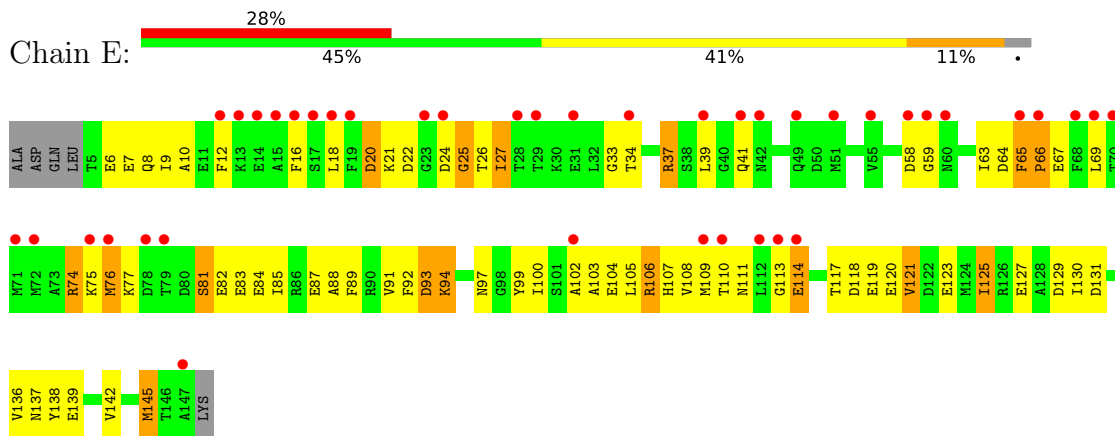
● Molecule 1: Calmodulin-sensitive adenylate cyclase



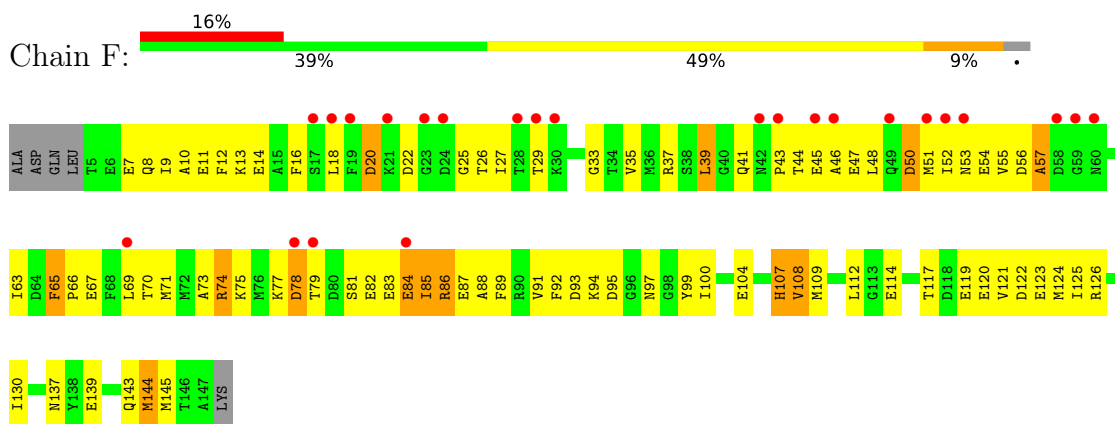
- Molecule 2: Calmodulin



- Molecule 2: Calmodulin



- Molecule 2: Calmodulin



4 Data and refinement statistics

Property	Value	Source
Space group	I 2 2 2	Depositor
Cell constants a, b, c, α , β , γ	116.87Å 166.45Å 342.39Å 90.00° 90.00° 90.00°	Depositor
Resolution (Å)	50.00 – 3.20 43.11 – 3.29	Depositor EDS
% Data completeness (in resolution range)	96.2 (50.00-3.20) 95.7 (43.11-3.29)	Depositor EDS
R_{merge}	0.11	Depositor
R_{sym}	0.13	Depositor
$\langle I/\sigma(I) \rangle$ ¹	3.75 (at 3.32Å)	Xtrriage
Refinement program	CNS	Depositor
R, R_{free}	0.250 , 0.307 0.260 , (Not available)	Depositor DCC
R_{free} test set	No test flags present.	wwPDB-VP
Wilson B-factor (Å ²)	71.0	Xtrriage
Anisotropy	0.216	Xtrriage
Bulk solvent k_{sol} (e/Å ³), B_{sol} (Å ²)	0.29 , 54.1	EDS
L-test for twinning ²	$\langle L \rangle = 0.48$, $\langle L^2 \rangle = 0.32$	Xtrriage
Estimated twinning fraction	No twinning to report.	Xtrriage
F_o, F_c correlation	0.86	EDS
Total number of atoms	15050	wwPDB-VP
Average B, all atoms (Å ²)	57.0	wwPDB-VP

Xtrriage's analysis on translational NCS is as follows: *The largest off-origin peak in the Patterson function is 2.31% of the height of the origin peak. No significant pseudotranslation is detected.*

¹Intensities estimated from amplitudes.

²Theoretical values of $\langle |L| \rangle$, $\langle L^2 \rangle$ for acentric reflections are 0.5, 0.333 respectively for untwinned datasets, and 0.375, 0.2 for perfectly twinned datasets.

5 Model quality i

5.1 Standard geometry i

Bond lengths and bond angles in the following residue types are not validated in this section: CA, CMP, YB, POP

The Z score for a bond length (or angle) is the number of standard deviations the observed value is removed from the expected value. A bond length (or angle) with $|Z| > 5$ is considered an outlier worth inspection. RMSZ is the root-mean-square of all Z scores of the bond lengths (or angles).

Mol	Chain	Bond lengths		Bond angles	
		RMSZ	# Z >5	RMSZ	# Z >5
1	A	0.57	5/3999 (0.1%)	0.91	25/5382 (0.5%)
1	B	0.64	5/3778 (0.1%)	0.97	22/5088 (0.4%)
1	C	0.84	8/4012 (0.2%)	1.30	36/5400 (0.7%)
2	D	0.39	0/1137	0.56	0/1527
2	E	0.36	0/1137	0.54	0/1527
2	F	0.45	1/1137 (0.1%)	0.62	0/1527
All	All	0.64	19/15200 (0.1%)	0.99	83/20451 (0.4%)

Chiral center outliers are detected by calculating the chiral volume of a chiral center and verifying if the center is modelled as a planar moiety or with the opposite hand. A planarity outlier is detected by checking planarity of atoms in a peptide group, atoms in a mainchain group or atoms of a sidechain that are expected to be planar.

Mol	Chain	#Chirality outliers	#Planarity outliers
1	A	0	2
1	B	0	1
1	C	1	5
All	All	1	8

The worst 5 of 19 bond length outliers are listed below:

Mol	Chain	Res	Type	Atoms	Z	Observed(Å)	Ideal(Å)
1	C	520	PRO	N-CD	20.86	1.77	1.47
1	C	773	PHE	C-N	20.19	1.80	1.34
1	C	632	TYR	N-CA	19.71	1.85	1.46
1	C	741	ILE	N-CA	15.98	1.78	1.46
1	C	521	ASN	N-CA	14.19	1.74	1.46

The worst 5 of 83 bond angle outliers are listed below:

Mol	Chain	Res	Type	Atoms	Z	Observed(°)	Ideal(°)
1	C	773	PHE	O-C-N	-46.13	48.88	122.70
1	C	773	PHE	CB-CA-C	22.71	155.82	110.40
1	C	773	PHE	N-CA-C	-22.63	49.90	111.00
1	C	520	PRO	CA-N-CD	-18.66	85.37	111.50
1	B	730	ASN	N-CA-CB	-17.00	80.00	110.60

All (1) chirality outliers are listed below:

Mol	Chain	Res	Type	Atom
1	C	773	PHE	CA

5 of 8 planarity outliers are listed below:

Mol	Chain	Res	Type	Group
1	A	511	LYS	Peptide
1	A	773	PHE	Peptide
1	B	729	TYR	Peptide
1	C	427	ASP	Peptide
1	C	510	GLN	Peptide

5.2 Too-close contacts [i](#)

In the following table, the Non-H and H(model) columns list the number of non-hydrogen atoms and hydrogen atoms in the chain respectively. The H(added) column lists the number of hydrogen atoms added and optimized by MolProbity. The Clashes column lists the number of clashes within the asymmetric unit, whereas Symm-Clashes lists symmetry-related clashes.

Mol	Chain	Non-H	H(model)	H(added)	Clashes	Symm-Clashes
1	A	3924	0	3967	345	0
1	B	3706	0	3728	472	0
1	C	3937	0	3980	329	0
2	D	1125	0	1049	82	0
2	E	1125	0	1049	92	0
2	F	1125	0	1048	103	0
3	A	3	0	0	0	0
3	B	3	0	0	0	0
3	C	3	0	0	0	0
4	A	22	0	10	6	0
4	B	22	0	10	5	0
4	C	22	0	10	3	0
5	A	9	0	0	3	0
5	B	9	0	0	1	0

Continued on next page...

Continued from previous page...

Mol	Chain	Non-H	H(model)	H(added)	Clashes	Symm-Clashes
5	C	9	0	0	1	0
6	D	2	0	0	0	0
6	E	2	0	0	0	0
6	F	2	0	0	1	0
All	All	15050	0	14851	1357	0

The all-atom clashscore is defined as the number of clashes found per 1000 atoms (including hydrogen atoms). The all-atom clashscore for this structure is 45.

The worst 5 of 1357 close contacts within the same asymmetric unit are listed below, sorted by their clash magnitude.

Atom-1	Atom-2	Interatomic distance (Å)	Clash overlap (Å)
4:B:290:CMP:H2	4:B:290:CMP:C2	0.97	1.49
4:A:289:CMP:C2	4:A:289:CMP:H2	0.97	1.48
4:C:910:CMP:H2	4:C:910:CMP:C2	0.97	1.47
1:B:730:ASN:N	1:B:730:ASN:CA	1.73	1.46
1:C:741:ILE:CA	1:C:741:ILE:N	1.78	1.46

There are no symmetry-related clashes.

5.3 Torsion angles [i](#)

5.3.1 Protein backbone [i](#)

In the following table, the Percentiles column shows the percent Ramachandran outliers of the chain as a percentile score with respect to all X-ray entries followed by that with respect to entries of similar resolution.

The Analysed column shows the number of residues for which the backbone conformation was analysed, and the total number of residues.

Mol	Chain	Analysed	Favoured	Allowed	Outliers	Percentiles	
1	A	475/510 (93%)	371 (78%)	83 (18%)	21 (4%)	2	19
1	B	448/510 (88%)	308 (69%)	116 (26%)	24 (5%)	2	14
1	C	477/510 (94%)	358 (75%)	98 (20%)	21 (4%)	2	19
2	D	141/148 (95%)	85 (60%)	43 (30%)	13 (9%)	1	3
2	E	141/148 (95%)	87 (62%)	37 (26%)	17 (12%)	0	2
2	F	141/148 (95%)	88 (62%)	36 (26%)	17 (12%)	0	2

Continued on next page...

Continued from previous page...

Mol	Chain	Analysed	Favoured	Allowed	Outliers	Percentiles
All	All	1823/1974 (92%)	1297 (71%)	413 (23%)	113 (6%)	1 11

5 of 113 Ramachandran outliers are listed below:

Mol	Chain	Res	Type
1	A	368	GLN
1	A	521	ASN
1	A	539	GLU
1	A	669	SER
2	D	81	SER

5.3.2 Protein sidechains [i](#)

In the following table, the Percentiles column shows the percent sidechain outliers of the chain as a percentile score with respect to all X-ray entries followed by that with respect to entries of similar resolution.

The Analysed column shows the number of residues for which the sidechain conformation was analysed, and the total number of residues.

Mol	Chain	Analysed	Rotameric	Outliers	Percentiles
1	A	429/455 (94%)	395 (92%)	34 (8%)	12 43
1	B	405/455 (89%)	350 (86%)	55 (14%)	3 17
1	C	431/455 (95%)	397 (92%)	34 (8%)	12 43
2	D	121/126 (96%)	112 (93%)	9 (7%)	13 46
2	E	121/126 (96%)	114 (94%)	7 (6%)	20 55
2	F	121/126 (96%)	119 (98%)	2 (2%)	60 83
All	All	1628/1743 (93%)	1487 (91%)	141 (9%)	10 37

5 of 141 residues with a non-rotameric sidechain are listed below:

Mol	Chain	Res	Type
1	C	436	GLU
1	C	520	PRO
1	C	632	TYR
1	B	332	ASN
1	B	324	THR

Sometimes sidechains can be flipped to improve hydrogen bonding and reduce clashes. 5 of 69 such sidechains are listed below:

Mol	Chain	Res	Type
1	C	618	ASN
1	C	633	ASN
1	C	781	ASN
1	B	332	ASN
2	D	41	GLN

5.3.3 RNA [i](#)

There are no RNA molecules in this entry.

5.4 Non-standard residues in protein, DNA, RNA chains [i](#)

There are no non-standard protein/DNA/RNA residues in this entry.

5.5 Carbohydrates [i](#)

There are no monosaccharides in this entry.

5.6 Ligand geometry [i](#)

Of 21 ligands modelled in this entry, 15 are monoatomic - leaving 6 for Mogul analysis.

In the following table, the Counts columns list the number of bonds (or angles) for which Mogul statistics could be retrieved, the number of bonds (or angles) that are observed in the model and the number of bonds (or angles) that are defined in the Chemical Component Dictionary. The Link column lists molecule types, if any, to which the group is linked. The Z score for a bond length (or angle) is the number of standard deviations the observed value is removed from the expected value. A bond length (or angle) with $|Z| > 2$ is considered an outlier worth inspection. RMSZ is the root-mean-square of all Z scores of the bond lengths (or angles).

Mol	Type	Chain	Res	Link	Bond lengths			Bond angles		
					Counts	RMSZ	# Z > 2	Counts	RMSZ	# Z > 2
5	POP	A	893	3	6,8,8	1.64	1 (16%)	13,13,13	1.32	2 (15%)
5	POP	C	895	3	6,8,8	1.37	1 (16%)	13,13,13	1.39	3 (23%)
4	CMP	B	290	3	22,25,25	1.82	6 (27%)	24,39,39	3.62	12 (50%)
4	CMP	C	910	3	22,25,25	1.91	4 (18%)	24,39,39	3.58	15 (62%)
4	CMP	A	289	3	22,25,25	1.92	7 (31%)	24,39,39	3.80	13 (54%)
5	POP	B	894	3	6,8,8	1.54	2 (33%)	13,13,13	1.39	2 (15%)

In the following table, the Chirals column lists the number of chiral outliers, the number of chiral

centers analysed, the number of these observed in the model and the number defined in the Chemical Component Dictionary. Similar counts are reported in the Torsion and Rings columns. '2' means no outliers of that kind were identified.

Mol	Type	Chain	Res	Link	Chirals	Torsions	Rings
5	POP	A	893	3	-	1/6/6/6	-
5	POP	C	895	3	-	0/6/6/6	-
4	CMP	B	290	3	1/1/5/5	0/0/31/31	0/4/4/4
4	CMP	C	910	3	1/1/5/5	0/0/31/31	0/4/4/4
4	CMP	A	289	3	1/1/5/5	0/0/31/31	0/4/4/4
5	POP	B	894	3	-	2/6/6/6	-

The worst 5 of 21 bond length outliers are listed below:

Mol	Chain	Res	Type	Atoms	Z	Observed(Å)	Ideal(Å)
4	C	910	CMP	P-O5'	-6.33	1.50	1.57
4	B	290	CMP	P-O5'	-4.82	1.52	1.57
4	A	289	CMP	P-O3'	-4.44	1.50	1.57
4	A	289	CMP	P-O5'	-3.97	1.53	1.57
4	B	290	CMP	C2'-C1'	3.38	1.58	1.53

The worst 5 of 47 bond angle outliers are listed below:

Mol	Chain	Res	Type	Atoms	Z	Observed(°)	Ideal(°)
4	C	910	CMP	O3'-C3'-C2'	10.72	126.11	115.61
4	B	290	CMP	O3'-C3'-C2'	9.85	125.27	115.61
4	A	289	CMP	C1'-N9-C4	9.85	143.94	126.64
4	A	289	CMP	O3'-C3'-C2'	9.71	125.13	115.61
4	B	290	CMP	C1'-N9-C4	8.21	141.07	126.64

All (3) chirality outliers are listed below:

Mol	Chain	Res	Type	Atom
4	A	289	CMP	C1'
4	B	290	CMP	C1'
4	C	910	CMP	C1'

All (3) torsion outliers are listed below:

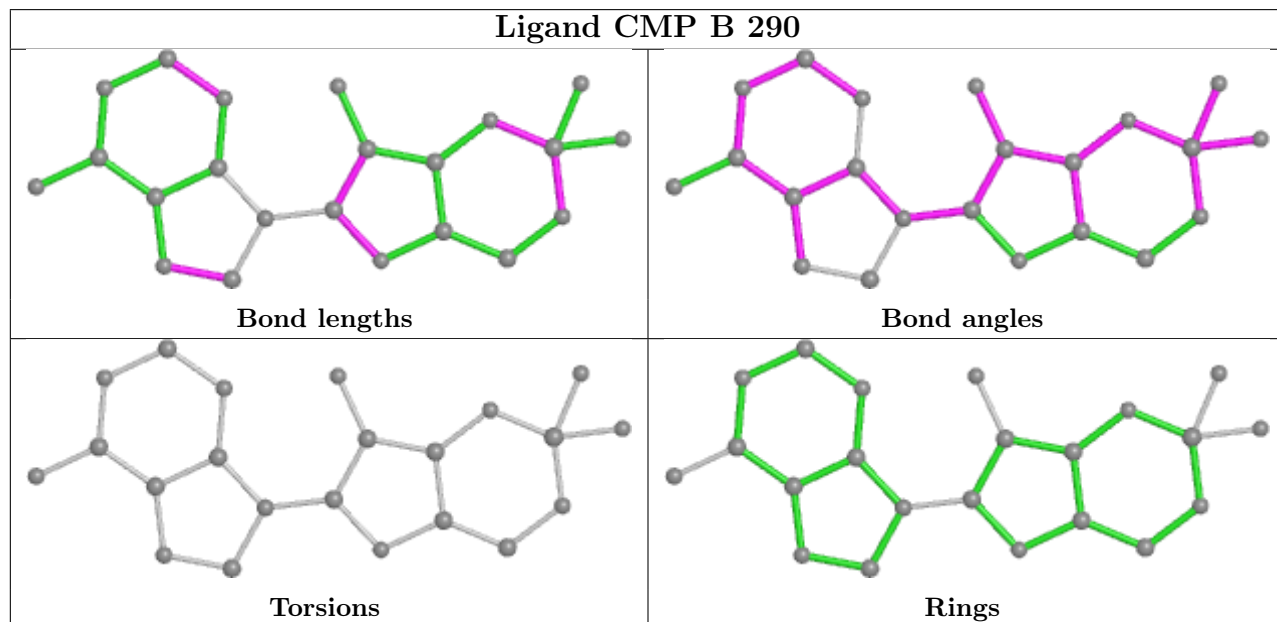
Mol	Chain	Res	Type	Atoms
5	A	893	POP	P2-O-P1-O2
5	B	894	POP	P1-O-P2-O5
5	B	894	POP	P1-O-P2-O6

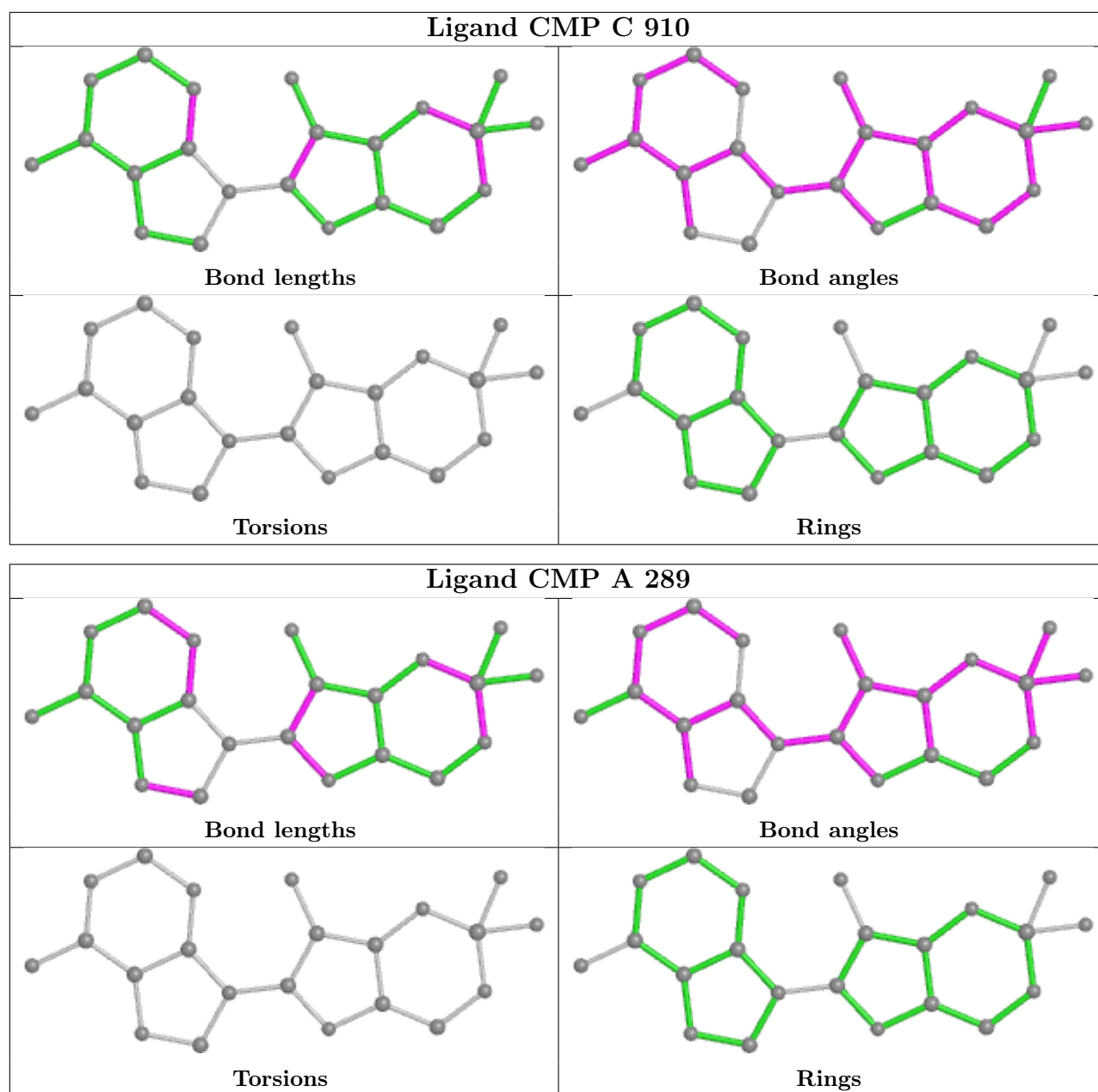
There are no ring outliers.

6 monomers are involved in 19 short contacts:

Mol	Chain	Res	Type	Clashes	Symm-Clashes
5	A	893	POP	3	0
5	C	895	POP	1	0
4	B	290	CMP	5	0
4	C	910	CMP	3	0
4	A	289	CMP	6	0
5	B	894	POP	1	0

The following is a two-dimensional graphical depiction of Mogul quality analysis of bond lengths, bond angles, torsion angles, and ring geometry for all instances of the Ligand of Interest. In addition, ligands with molecular weight > 250 and outliers as shown on the validation Tables will also be included. For torsion angles, if less than 5% of the Mogul distribution of torsion angles is within 10 degrees of the torsion angle in question, then that torsion angle is considered an outlier. Any bond that is central to one or more torsion angles identified as an outlier by Mogul will be highlighted in the graph. For rings, the root-mean-square deviation (RMSD) between the ring in question and similar rings identified by Mogul is calculated over all ring torsion angles. If the average RMSD is greater than 60 degrees and the minimal RMSD between the ring in question and any Mogul-identified rings is also greater than 60 degrees, then that ring is considered an outlier. The outliers are highlighted in purple. The color gray indicates Mogul did not find sufficient equivalents in the CSD to analyse the geometry.





5.7 Other polymers [i](#)

There are no such residues in this entry.

5.8 Polymer linkage issues [i](#)

The following chains have linkage breaks:

Mol	Chain	Number of breaks
1	C	1

All chain breaks are listed below:

Model	Chain	Residue-1	Atom-1	Residue-2	Atom-2	Distance (Å)
1	C	773:PHE	C	774:LYS	N	1.80

6 Fit of model and data [i](#)

6.1 Protein, DNA and RNA chains [i](#)

In the following table, the column labelled ‘#RSRZ > 2’ contains the number (and percentage) of RSRZ outliers, followed by percent RSRZ outliers for the chain as percentile scores relative to all X-ray entries and entries of similar resolution. The OWAB column contains the minimum, median, 95th percentile and maximum values of the occupancy-weighted average B-factor per residue. The column labelled ‘Q < 0.9’ lists the number of (and percentage) of residues with an average occupancy less than 0.9.

Mol	Chain	Analysed	<RSRZ>	#RSRZ>2	OWAB(Å ²)	Q<0.9
1	A	481/510 (94%)	-0.09	8 (1%) 70 57	10, 43, 95, 99	0
1	B	454/510 (89%)	0.15	27 (5%) 22 13	10, 51, 95, 98	0
1	C	483/510 (94%)	-0.06	18 (3%) 41 26	10, 43, 95, 97	0
2	D	143/148 (96%)	0.80	23 (16%) 1 1	18, 95, 95, 98	0
2	E	143/148 (96%)	1.29	41 (28%) 0 0	39, 95, 96, 98	0
2	F	143/148 (96%)	0.78	24 (16%) 1 1	17, 95, 95, 97	0
All	All	1847/1974 (93%)	0.22	141 (7%) 13 7	10, 55, 95, 99	0

The worst 5 of 141 RSRZ outliers are listed below:

Mol	Chain	Res	Type	RSRZ
2	D	79	THR	8.9
2	E	59	GLY	7.6
2	E	79	THR	7.1
1	B	740	GLN	7.1
2	E	71	MET	6.9

6.2 Non-standard residues in protein, DNA, RNA chains [i](#)

There are no non-standard protein/DNA/RNA residues in this entry.

6.3 Carbohydrates [i](#)

There are no monosaccharides in this entry.

6.4 Ligands

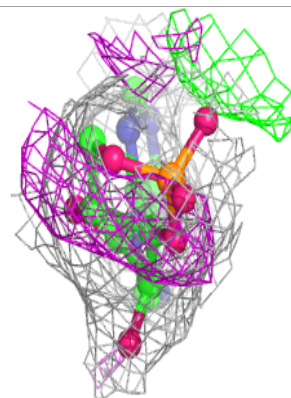
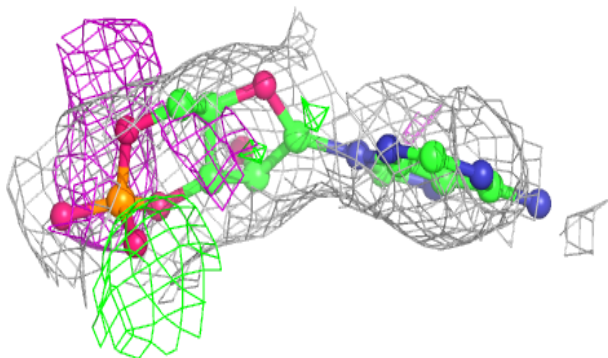
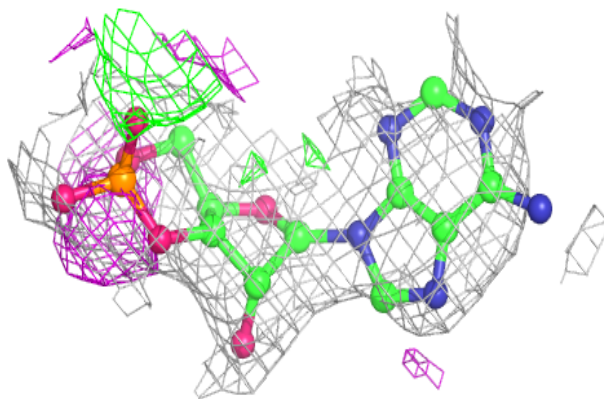
In the following table, the Atoms column lists the number of modelled atoms in the group and the number defined in the chemical component dictionary. The B-factors column lists the minimum, median, 95th percentile and maximum values of B factors of atoms in the group. The column labelled 'Q< 0.9' lists the number of atoms with occupancy less than 0.9.

Mol	Type	Chain	Res	Atoms	RSCC	RSR	B-factors(Å ²)	Q<0.9
4	CMP	C	910	22/22	0.87	0.28	15,22,44,45	0
5	POP	C	895	9/9	0.88	0.30	50,52,61,62	0
4	CMP	A	289	22/22	0.91	0.25	11,18,39,43	0
4	CMP	B	290	22/22	0.92	0.24	16,25,44,46	0
5	POP	B	894	9/9	0.93	0.26	51,52,54,55	0
3	YB	C	909	1/1	0.93	0.42	72,72,72,72	1
5	POP	A	893	9/9	0.94	0.29	96,101,104,105	0
3	YB	A	907	1/1	0.95	0.36	49,49,49,49	1
3	YB	B	908	1/1	0.95	0.36	49,49,49,49	1
3	YB	A	904	1/1	0.95	0.37	42,42,42,42	1
6	CA	E	802	1/1	0.96	0.04	43,43,43,43	0
6	CA	F	805	1/1	0.96	0.33	21,21,21,21	0
3	YB	A	901	1/1	0.97	0.27	50,50,50,50	1
6	CA	D	800	1/1	0.97	0.15	11,11,11,11	0
3	YB	C	903	1/1	0.97	0.45	72,72,72,72	1
3	YB	C	906	1/1	0.97	0.41	31,31,31,31	1
6	CA	D	801	1/1	0.98	0.35	13,13,13,13	0
3	YB	B	905	1/1	0.98	0.35	31,31,31,31	1
3	YB	B	902	1/1	0.98	0.34	107,107,107,107	1
6	CA	F	804	1/1	0.99	0.11	26,26,26,26	0
6	CA	E	803	1/1	0.99	0.32	23,23,23,23	0

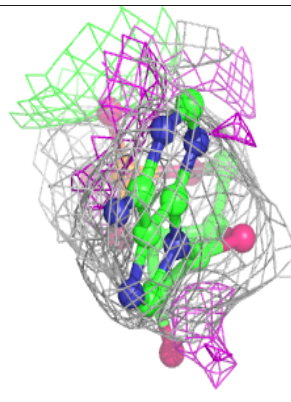
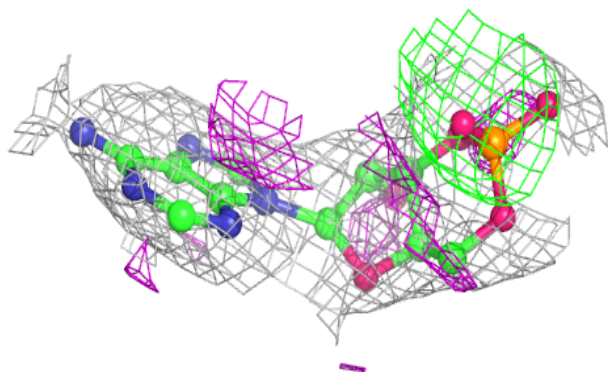
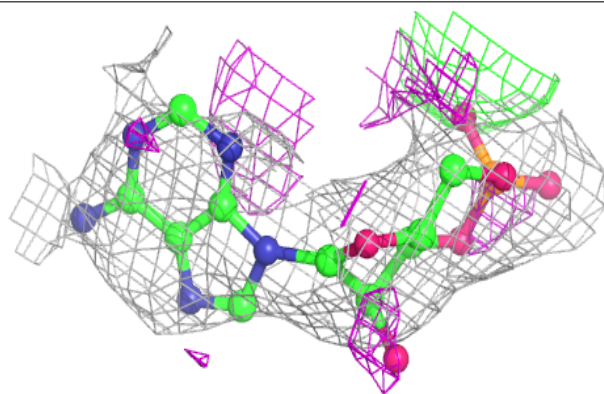
The following is a graphical depiction of the model fit to experimental electron density of all instances of the Ligand of Interest. In addition, ligands with molecular weight > 250 and outliers as shown on the geometry validation Tables will also be included. Each fit is shown from different orientation to approximate a three-dimensional view.

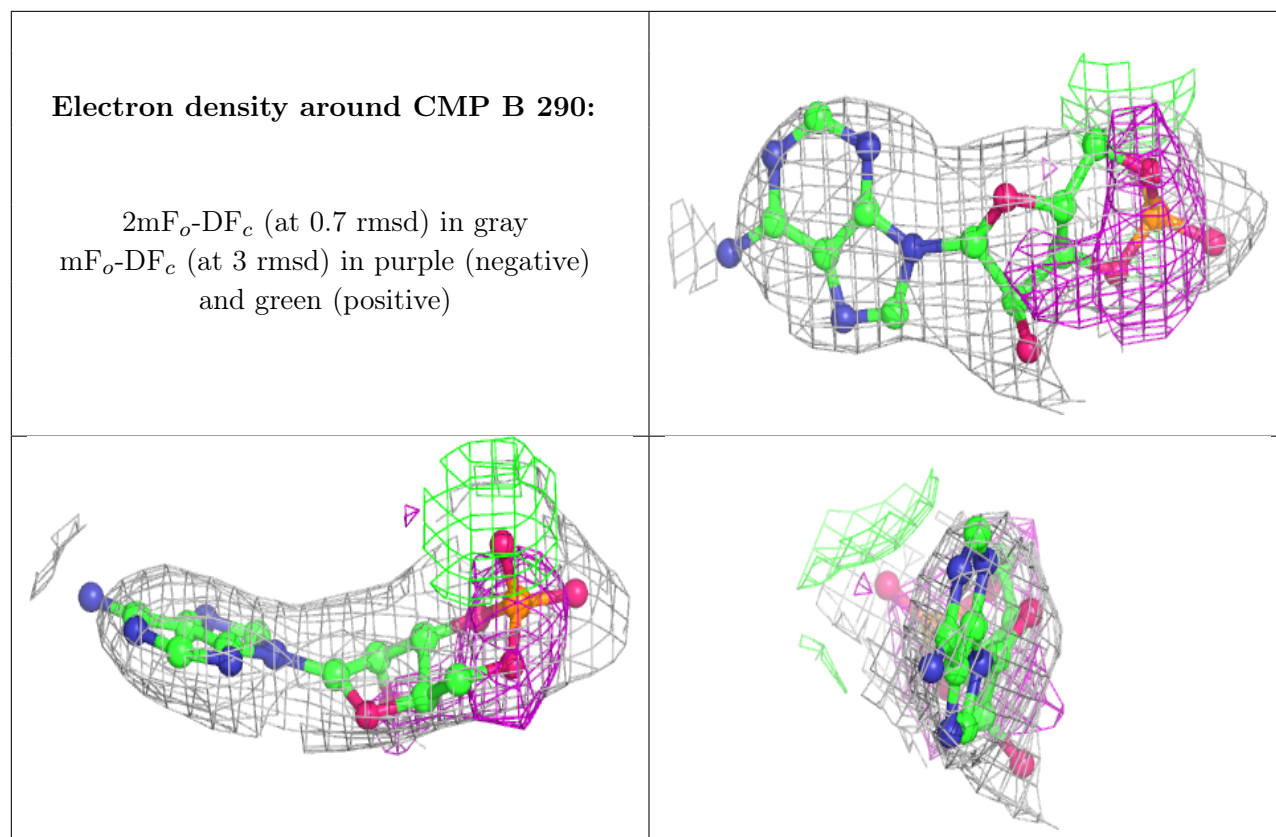
Electron density around CMP C 910:

$2mF_o-DF_c$ (at 0.7 rmsd) in gray
 mF_o-DF_c (at 3 rmsd) in purple (negative)
and green (positive)

**Electron density around CMP A 289:**

$2mF_o-DF_c$ (at 0.7 rmsd) in gray
 mF_o-DF_c (at 3 rmsd) in purple (negative)
and green (positive)





6.5 Other polymers [i](#)

There are no such residues in this entry.