



Full wwPDB X-ray Structure Validation Report ⓘ

Jun 26, 2024 – 02:32 AM EDT

PDB ID : 6SKH
Title : X-ray structure of human glutamate carboxypeptidase II (GCPII) - the E424M inactive mutant, in complex with a inhibitor sulfamide inhibitor GluAsp
Authors : Motlova, L.; Novakova, Z.; Barinka, C.
Deposited on : 2019-08-15
Resolution : 1.58 Å(reported)

This is a Full wwPDB X-ray Structure Validation Report for a publicly released PDB entry.

We welcome your comments at validation@mail.wwpdb.org

A user guide is available at

<https://www.wwpdb.org/validation/2017/XrayValidationReportHelp>

with specific help available everywhere you see the ⓘ symbol.

The types of validation reports are described at

<http://www.wwpdb.org/validation/2017/FAQs#types>.

The following versions of software and data (see [references ⓘ](#)) were used in the production of this report:

MolProbity : 4.02b-467
Mogul : 1.8.5 (274361), CSD as541be (2020)
Xtriage (Phenix) : 1.13
EDS : 2.37.1
buster-report : 1.1.7 (2018)
Percentile statistics : 20191225.v01 (using entries in the PDB archive December 25th 2019)
Refmac : 5.8.0158
CCP4 : 7.0.044 (Gargrove)
Ideal geometry (proteins) : Engh & Huber (2001)
Ideal geometry (DNA, RNA) : Parkinson et al. (1996)
Validation Pipeline (wwPDB-VP) : 2.37.1

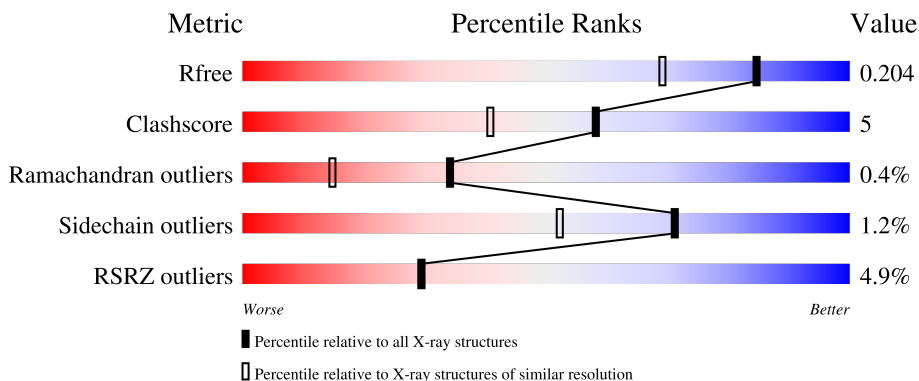
1 Overall quality at a glance

The following experimental techniques were used to determine the structure:

X-RAY DIFFRACTION

The reported resolution of this entry is 1.58 Å.

Percentile scores (ranging between 0-100) for global validation metrics of the entry are shown in the following graphic. The table shows the number of entries on which the scores are based.



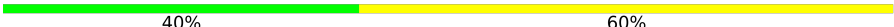
Metric	Whole archive (#Entries)	Similar resolution (#Entries, resolution range(Å))
R_{free}	130704	5534 (1.60-1.56)
Clashscore	141614	5861 (1.60-1.56)
Ramachandran outliers	138981	5708 (1.60-1.56)
Sidechain outliers	138945	5703 (1.60-1.56)
RSRZ outliers	127900	5431 (1.60-1.56)

The table below summarises the geometric issues observed across the polymeric chains and their fit to the electron density. The red, orange, yellow and green segments of the lower bar indicate the fraction of residues that contain outliers for ≥ 3 , 2, 1 and 0 types of geometric quality criteria respectively. A grey segment represents the fraction of residues that are not modelled. The numeric value for each fraction is indicated below the corresponding segment, with a dot representing fractions $\leq 5\%$. The upper red bar (where present) indicates the fraction of residues that have poor fit to the electron density. The numeric value is given above the bar.

Mol	Chain	Length	Quality of chain
1	A	707	
2	B	3	
3	C	2	
3	D	2	
4	E	4	

Continued on next page...

Continued from previous page...

Mol	Chain	Length	Quality of chain
5	F	5	 40% 60%

2 Entry composition [i](#)

There are 15 unique types of molecules in this entry. The entry contains 7027 atoms, of which 0 are hydrogens and 0 are deuteriums.

In the tables below, the ZeroOcc column contains the number of atoms modelled with zero occupancy, the AltConf column contains the number of residues with at least one atom in alternate conformation and the Trace column contains the number of residues modelled with at most 2 atoms.

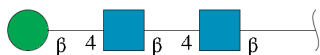
- Molecule 1 is a protein called Glutamate carboxypeptidase 2.

Mol	Chain	Residues	Atoms					ZeroOcc	AltConf	Trace
			Total	C	N	O	S			
1	A	696	6136	3924	1038	1152	22	0	83	0

There is a discrepancy between the modelled and reference sequences:

Chain	Residue	Modelled	Actual	Comment	Reference
A	424	MET	GLU	engineered mutation	UNP Q04609

- Molecule 2 is an oligosaccharide called beta-D-mannopyranose-(1-4)-2-acetamido-2-deoxy-beta-D-glucopyranose-(1-4)-2-acetamido-2-deoxy-beta-D-glucopyranose.



Mol	Chain	Residues	Atoms				ZeroOcc	AltConf	Trace
			Total	C	N	O			
2	B	3	39	22	2	15	0	0	0

- Molecule 3 is an oligosaccharide called 2-acetamido-2-deoxy-beta-D-glucopyranose-(1-4)-2-acetamido-2-deoxy-beta-D-glucopyranose.



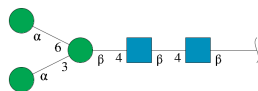
Mol	Chain	Residues	Atoms				ZeroOcc	AltConf	Trace
			Total	C	N	O			
3	C	2	28	16	2	10	0	0	0
3	D	2	28	16	2	10	0	0	0

- Molecule 4 is an oligosaccharide called alpha-D-mannopyranose-(1-3)-beta-D-mannopyranose-(1-4)-2-acetamido-2-deoxy-beta-D-glucopyranose-(1-4)-2-acetamido-2-deoxy-beta-D-glucopyranose.



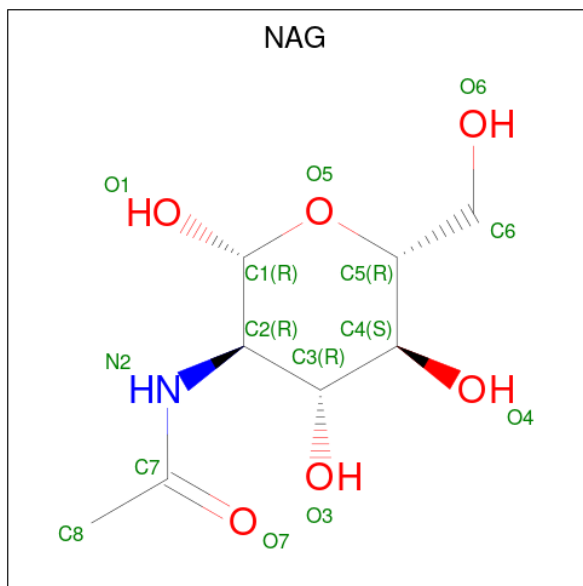
Mol	Chain	Residues	Atoms				ZeroOcc	AltConf	Trace
			Total	C	N	O			
4	E	4	50	28	2	20	0	0	0

- Molecule 5 is an oligosaccharide called alpha-D-mannopyranose-(1-3)-[alpha-D-mannopyranose-(1-6)]beta-D-mannopyranose-(1-4)-2-acetamido-2-deoxy-beta-D-glucopyranose-(1-4)-2-acetamido-2-deoxy-beta-D-glucopyranose.



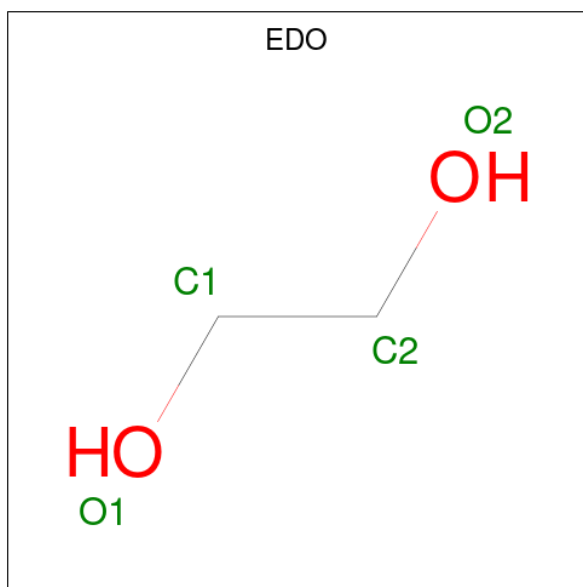
Mol	Chain	Residues	Atoms				ZeroOcc	AltConf	Trace
			Total	C	N	O			
5	F	5	61	34	2	25	0	0	0

- Molecule 6 is 2-acetamido-2-deoxy-beta-D-glucopyranose (three-letter code: NAG) (formula: C₈H₁₅NO₆).



Mol	Chain	Residues	Atoms				ZeroOcc	AltConf
6	A	1	Total	C	N	O	0	0
			14	8	1	5		
6	A	1	Total	C	N	O	0	0
			14	8	1	5		

- Molecule 7 is 1,2-ETHANEDIOL (three-letter code: EDO) (formula: C₂H₆O₂).



Mol	Chain	Residues	Atoms			ZeroOcc	AltConf
7	A	1	Total	C	O	0	0
			4	2	2		
7	A	1	Total	C	O	0	0
			4	2	2		
7	A	1	Total	C	O	0	0
			4	2	2		
7	A	1	Total	C	O	0	0
			4	2	2		

- Molecule 8 is ZINC ION (three-letter code: ZN) (formula: Zn).

Mol	Chain	Residues	Atoms		ZeroOcc	AltConf
8	A	2	Total	Zn	0	0
			2	2		

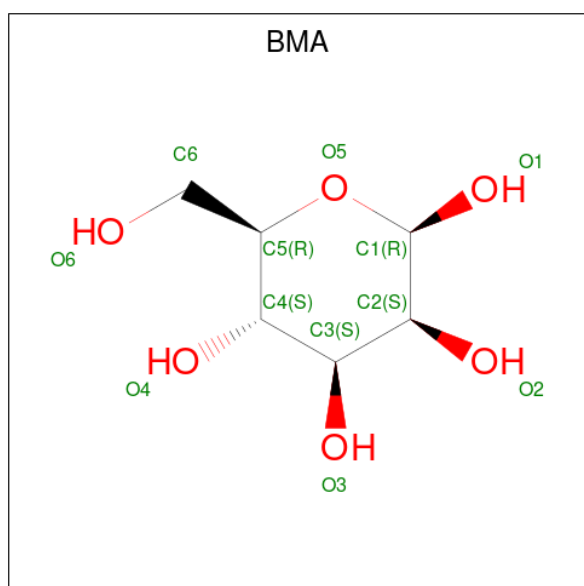
- Molecule 9 is CALCIUM ION (three-letter code: CA) (formula: Ca).

Mol	Chain	Residues	Atoms		ZeroOcc	AltConf
9	A	1	Total	Ca	0	0
			1	1		

- Molecule 10 is CHLORIDE ION (three-letter code: CL) (formula: Cl).

Mol	Chain	Residues	Atoms		ZeroOcc	AltConf
10	A	1	Total	Cl	0	0
			1	1		

- Molecule 11 is beta-D-mannopyranose (three-letter code: BMA) (formula: C₆H₁₂O₆).



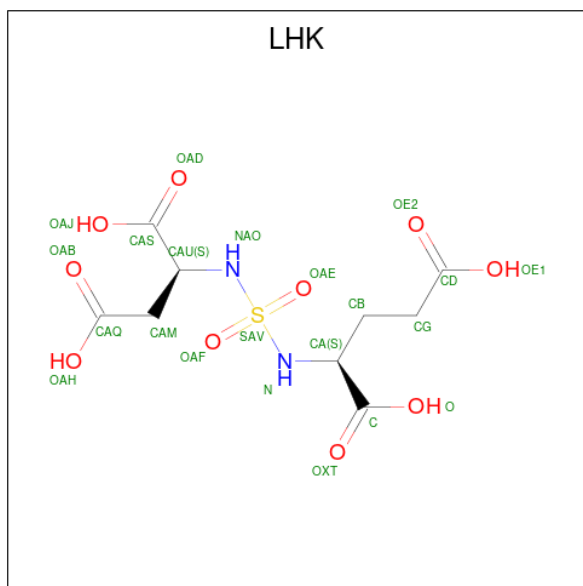
Mol	Chain	Residues	Atoms			ZeroOcc	AltConf
11	A	1	Total	C	O	0	0
			11	6	5		

- Molecule 12 is DI(HYDROXYETHYL)ETHER (three-letter code: PEG) (formula: C₄H₁₀O₃).



Mol	Chain	Residues	Atoms			ZeroOcc	AltConf
12	A	1	Total	C	O	0	0
			7	4	3		

- Molecule 13 is (2 {S})-2-[[[(2 {S})-1,4-bis(oxidanyl)-1,4-bis(oxidanylidene)butan-2-yl]sulfamoylamino]pentanedioic acid (three-letter code: LHK) (formula: C₉H₁₄N₂O₁₀S).



Mol	Chain	Residues	Atoms					ZeroOcc	AltConf
13	A	1	Total	C	N	O	S	0	0
			22	9	2	10	1		

- Molecule 14 is GLYCEROL (three-letter code: GOL) (formula: C₃H₈O₃).



Mol	Chain	Residues	Atoms	ZeroOcc	AltConf
14	A	1	Total C O 6 3 3	0	0

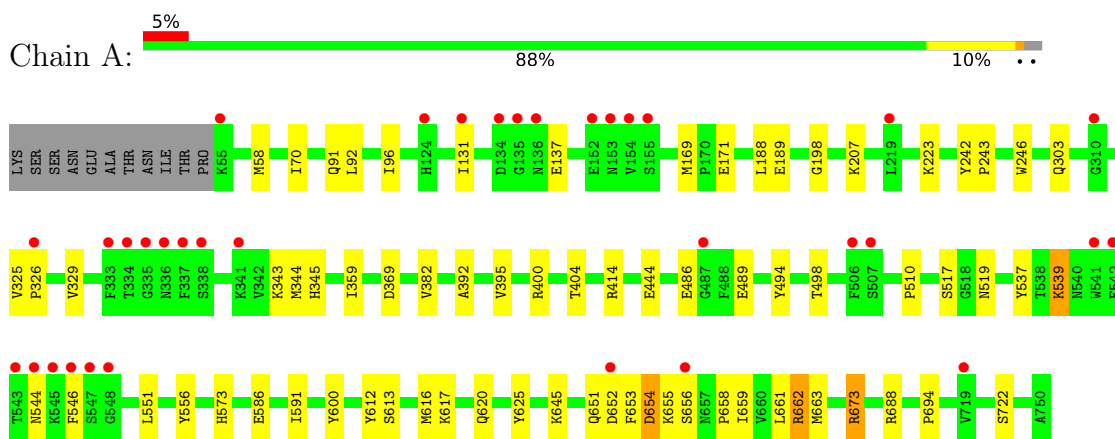
- Molecule 15 is water.

Mol	Chain	Residues	Atoms	ZeroOcc	AltConf
15	A	591	Total O 591 591	0	0

3 Residue-property plots [i](#)

These plots are drawn for all protein, RNA, DNA and oligosaccharide chains in the entry. The first graphic for a chain summarises the proportions of the various outlier classes displayed in the second graphic. The second graphic shows the sequence view annotated by issues in geometry and electron density. Residues are color-coded according to the number of geometric quality criteria for which they contain at least one outlier: green = 0, yellow = 1, orange = 2 and red = 3 or more. A red dot above a residue indicates a poor fit to the electron density ($RSRZ > 2$). Stretches of 2 or more consecutive residues without any outlier are shown as a green connector. Residues present in the sample, but not in the model, are shown in grey.

- Molecule 1: Glutamate carboxypeptidase 2



- Molecule 2: beta-D-mannopyranose-(1-4)-2-acetamido-2-deoxy-beta-D-glucopyranose-(1-4)-2-acetamido-2-deoxy-beta-D-glucopyranose



- Molecule 3: 2-acetamido-2-deoxy-beta-D-glucopyranose-(1-4)-2-acetamido-2-deoxy-beta-D-glucopyranose



- Molecule 3: 2-acetamido-2-deoxy-beta-D-glucopyranose-(1-4)-2-acetamido-2-deoxy-beta-D-glucopyranose



- Molecule 4: alpha-D-mannopyranose-(1-3)-beta-D-mannopyranose-(1-4)-2-acetamido-2-deoxy-beta-D-glucopyranose-(1-4)-2-acetamido-2-deoxy-beta-D-glucopyranose

Chain E:  25% 75%

MAG1
MAG2
BMA3
MAN4

- Molecule 5: alpha-D-mannopyranose-(1-3)-[alpha-D-mannopyranose-(1-6)]beta-D-mannopyranose-(1-4)-2-acetamido-2-deoxy-beta-D-glucopyranose-(1-4)-2-acetamido-2-deoxy-beta-D-glucopyranose

Chain F:  40% 60%

MAG1
MAG2
BMA3
MAN4
MAN5

4 Data and refinement statistics

Property	Value	Source
Space group	I 2 2 2	Depositor
Cell constants a, b, c, α , β , γ	101.63Å 130.53Å 159.19Å 90.00° 90.00° 90.00°	Depositor
Resolution (Å)	49.21 – 1.58 49.16 – 1.58	Depositor EDS
% Data completeness (in resolution range)	99.1 (49.21-1.58) 99.2 (49.16-1.58)	Depositor EDS
R_{merge}	0.03	Depositor
R_{sym}	(Not available)	Depositor
$\langle I/\sigma(I) \rangle$ ¹	2.23 (at 1.58Å)	Xtrriage
Refinement program	REFMAC 5.8.0222	Depositor
R, R_{free}	0.171 , 0.193 0.178 , 0.204	Depositor DCC
R_{free} test set	4263 reflections (2.98%)	wwPDB-VP
Wilson B-factor (Å ²)	21.3	Xtrriage
Anisotropy	0.562	Xtrriage
Bulk solvent k_{sol} (e/Å ³), B_{sol} (Å ²)	0.33 , 48.7	EDS
L-test for twinning ²	$\langle L \rangle = 0.49$, $\langle L^2 \rangle = 0.32$	Xtrriage
Estimated twinning fraction	No twinning to report.	Xtrriage
F_o, F_c correlation	0.97	EDS
Total number of atoms	7027	wwPDB-VP
Average B, all atoms (Å ²)	30.0	wwPDB-VP

Xtrriage's analysis on translational NCS is as follows: *The largest off-origin peak in the Patterson function is 4.18% of the height of the origin peak. No significant pseudotranslation is detected.*

¹Intensities estimated from amplitudes.

²Theoretical values of $\langle |L| \rangle$, $\langle L^2 \rangle$ for acentric reflections are 0.5, 0.333 respectively for untwinned datasets, and 0.375, 0.2 for perfectly twinned datasets.

5 Model quality [i](#)

5.1 Standard geometry [i](#)

Bond lengths and bond angles in the following residue types are not validated in this section: ZN, CA, LHK, NAG, MAN, PEG, GOL, EDO, BMA, CL

The Z score for a bond length (or angle) is the number of standard deviations the observed value is removed from the expected value. A bond length (or angle) with $|Z| > 5$ is considered an outlier worth inspection. RMSZ is the root-mean-square of all Z scores of the bond lengths (or angles).

Mol	Chain	Bond lengths		Bond angles	
		RMSZ	# Z >5	RMSZ	# Z >5
1	A	0.44	0/6376	0.63	1/8623 (0.0%)

Chiral center outliers are detected by calculating the chiral volume of a chiral center and verifying if the center is modelled as a planar moiety or with the opposite hand. A planarity outlier is detected by checking planarity of atoms in a peptide group, atoms in a mainchain group or atoms of a sidechain that are expected to be planar.

Mol	Chain	#Chirality outliers	#Planarity outliers
1	A	0	2

There are no bond length outliers.

All (1) bond angle outliers are listed below:

Mol	Chain	Res	Type	Atoms	Z	Observed($^{\circ}$)	Ideal($^{\circ}$)
1	A	673	ARG	NE-CZ-NH2	-5.01	117.79	120.30

There are no chirality outliers.

All (2) planarity outliers are listed below:

Mol	Chain	Res	Type	Group
1	A	414	ARG	Sidechain
1	A	662[A]	ARG	Sidechain

5.2 Too-close contacts [i](#)

In the following table, the Non-H and H(model) columns list the number of non-hydrogen atoms and hydrogen atoms in the chain respectively. The H(added) column lists the number of hydrogen atoms added and optimized by MolProbity. The Clashes column lists the number of clashes within the asymmetric unit, whereas Symm-Clashes lists symmetry-related clashes.

Mol	Chain	Non-H	H(model)	H(added)	Clashes	Symm-Clashes
1	A	6136	0	5983	62	0
2	B	39	0	34	0	0
3	C	28	0	25	0	0
3	D	28	0	25	0	0
4	E	50	0	43	2	0
5	F	61	0	52	0	0
6	A	28	0	26	1	0
7	A	16	0	24	0	0
8	A	2	0	0	0	0
9	A	1	0	0	0	0
10	A	1	0	0	0	0
11	A	11	0	10	0	0
12	A	7	0	10	0	0
13	A	22	0	0	0	0
14	A	6	0	8	0	0
15	A	591	0	0	16	0
All	All	7027	0	6240	62	0

The all-atom clashscore is defined as the number of clashes found per 1000 atoms (including hydrogen atoms). The all-atom clashscore for this structure is 5.

All (62) close contacts within the same asymmetric unit are listed below, sorted by their clash magnitude.

Atom-1	Atom-2	Interatomic distance (Å)	Clash overlap (Å)
1:A:486[A]:GLU:OE2	15:A:903:HOH:O	1.74	1.03
1:A:91[B]:GLN:OE1	15:A:904:HOH:O	1.79	0.99
1:A:617[A]:LYS:NZ	15:A:907:HOH:O	1.93	0.99
1:A:91[B]:GLN:OE1	15:A:905:HOH:O	1.80	0.99
1:A:651[B]:GLN:O	1:A:652[B]:ASP:OD1	1.95	0.85
1:A:58:MET:CE	1:A:586[A]:GLU:HG2	2.07	0.84
1:A:188[B]:LEU:HD11	1:A:329:VAL:HG11	1.60	0.80
1:A:620[A]:GLN:NE2	15:A:906:HOH:O	1.88	0.77
1:A:58:MET:HE1	1:A:586[A]:GLU:HG2	1.67	0.76
1:A:617[B]:LYS:NZ	15:A:909:HOH:O	2.18	0.76
1:A:655[A]:LYS:HD3	15:A:1386:HOH:O	1.85	0.75
1:A:91[B]:GLN:CD	15:A:904:HOH:O	2.22	0.74
1:A:400:ARG:O	1:A:404[B]:THR:HG23	1.90	0.72
1:A:131[A]:ILE:HG22	1:A:137:GLU:HG2	1.72	0.70
1:A:395[B]:VAL:HG21	15:A:1375:HOH:O	1.93	0.67
1:A:58:MET:HE2	1:A:586[A]:GLU:HG2	1.78	0.65
1:A:656[B]:SER:O	1:A:658[B]:PRO:HD3	1.98	0.63
1:A:58:MET:HE1	1:A:586[A]:GLU:CG	2.27	0.63

Continued on next page...

Continued from previous page...

Atom-1	Atom-2	Interatomic distance (Å)	Clash overlap (Å)
1:A:613[B]:SER:OG	15:A:908:HOH:O	2.16	0.63
1:A:591[A]:ILE:HG22	1:A:661[A]:LEU:HD21	1.82	0.62
1:A:659[B]:ILE:O	1:A:663[B]:MET:HG3	2.00	0.61
1:A:359[B]:ILE:HD12	1:A:359[B]:ILE:N	2.15	0.60
1:A:91[B]:GLN:NE2	15:A:904:HOH:O	2.35	0.59
1:A:688[B]:ARG:NH2	15:A:911:HOH:O	2.28	0.59
1:A:612:TYR:CZ	1:A:616:MET:HG3	2.40	0.57
1:A:369:ASP:OD2	1:A:662[B]:ARG:NH2	2.37	0.56
1:A:655[A]:LYS:HE3	4:E:4:MAN:H4	1.87	0.56
1:A:207[B]:LYS:HE2	15:A:914:HOH:O	2.05	0.56
1:A:655[A]:LYS:HD2	4:E:4:MAN:O2	2.06	0.55
1:A:517:SER:HB2	1:A:694:PRO:HG3	1.89	0.54
1:A:591[A]:ILE:CG2	1:A:661[A]:LEU:HD21	2.38	0.54
1:A:131[A]:ILE:CG2	1:A:137:GLU:HG2	2.40	0.52
1:A:188[B]:LEU:HD11	1:A:329:VAL:CG1	2.35	0.52
1:A:586[A]:GLU:HA	1:A:586[A]:GLU:OE1	2.10	0.51
1:A:651[B]:GLN:O	1:A:651[B]:GLN:NE2	2.44	0.51
1:A:653[B]:PHE:O	1:A:655[B]:LYS:HD3	2.11	0.50
1:A:645[B]:LYS:HE3	15:A:924:HOH:O	2.13	0.49
1:A:169:MET:HA	1:A:344:MET:O	2.13	0.48
1:A:486[A]:GLU:H	1:A:486[A]:GLU:CD	2.15	0.48
1:A:198:GLY:O	1:A:223:LYS:HE2	2.12	0.48
1:A:246:TRP:CD1	6:A:809:NAG:H83	2.49	0.47
1:A:58:MET:CE	1:A:586[A]:GLU:CG	2.86	0.47
1:A:539:LYS:NZ	1:A:546:PHE:O	2.28	0.47
1:A:586[A]:GLU:OE1	15:A:910:HOH:O	2.20	0.46
1:A:92:LEU:O	1:A:96[A]:ILE:HG12	2.15	0.46
1:A:625:TYR:CE1	1:A:722[B]:SER:HA	2.50	0.46
1:A:58:MET:HE1	1:A:586[A]:GLU:CD	2.37	0.45
1:A:171:GLU:HG2	1:A:343:LYS:HG3	1.99	0.45
1:A:551:LEU:HD22	1:A:556:TYR:HB2	1.99	0.44
1:A:645[B]:LYS:HD3	1:A:645[B]:LYS:HA	1.85	0.44
1:A:586[B]:GLU:HG2	15:A:1271:HOH:O	2.17	0.44
1:A:242:TYR:CG	1:A:243:PRO:HA	2.54	0.42
1:A:325:VAL:HB	1:A:326:PRO:HD2	2.01	0.41
1:A:489[B]:GLU:H	1:A:489[B]:GLU:HG2	1.50	0.41
1:A:70:ILE:HG21	1:A:573:HIS:HB3	2.03	0.41
1:A:392:ALA:HA	1:A:395[B]:VAL:HG22	2.01	0.41
1:A:494:TYR:CE1	1:A:498[B]:THR:HG21	2.56	0.41
1:A:651[B]:GLN:HE21	1:A:651[B]:GLN:C	2.24	0.41
1:A:169:MET:HG2	1:A:345:HIS:HA	2.04	0.40

Continued on next page...

Continued from previous page...

Atom-1	Atom-2	Interatomic distance (Å)	Clash overlap (Å)
1:A:444:GLU:OE1	1:A:444:GLU:HA	2.22	0.40
1:A:653[B]:PHE:CG	1:A:654[B]:ASP:N	2.89	0.40
1:A:498[B]:THR:HG22	1:A:510:PRO:HD3	2.04	0.40

There are no symmetry-related clashes.

5.3 Torsion angles [i](#)

5.3.1 Protein backbone [i](#)

In the following table, the Percentiles column shows the percent Ramachandran outliers of the chain as a percentile score with respect to all X-ray entries followed by that with respect to entries of similar resolution.

The Analysed column shows the number of residues for which the backbone conformation was analysed, and the total number of residues.

Mol	Chain	Analysed	Favoured	Allowed	Outliers	Percentiles
1	A	777/707 (110%)	744 (96%)	29 (4%)	4 (0%)	29 10

All (4) Ramachandran outliers are listed below:

Mol	Chain	Res	Type
1	A	654[A]	ASP
1	A	654[B]	ASP
1	A	382	VAL
1	A	544	ASN

5.3.2 Protein sidechains [i](#)

In the following table, the Percentiles column shows the percent sidechain outliers of the chain as a percentile score with respect to all X-ray entries followed by that with respect to entries of similar resolution.

The Analysed column shows the number of residues for which the sidechain conformation was analysed, and the total number of residues.

Mol	Chain	Analysed	Rotameric	Outliers	Percentiles
1	A	676/603 (112%)	668 (99%)	8 (1%)	71 52

All (8) residues with a non-rotameric sidechain are listed below:

Mol	Chain	Res	Type
1	A	189[A]	GLU
1	A	189[B]	GLU
1	A	303	GLN
1	A	519	ASN
1	A	537	TYR
1	A	539	LYS
1	A	600	TYR
1	A	673	ARG

Sometimes sidechains can be flipped to improve hydrogen bonding and reduce clashes. There are no such sidechains identified.

5.3.3 RNA [i](#)

There are no RNA molecules in this entry.

5.4 Non-standard residues in protein, DNA, RNA chains [i](#)

There are no non-standard protein/DNA/RNA residues in this entry.

5.5 Carbohydrates [i](#)

16 monosaccharides are modelled in this entry.

In the following table, the Counts columns list the number of bonds (or angles) for which Mogul statistics could be retrieved, the number of bonds (or angles) that are observed in the model and the number of bonds (or angles) that are defined in the Chemical Component Dictionary. The Link column lists molecule types, if any, to which the group is linked. The Z score for a bond length (or angle) is the number of standard deviations the observed value is removed from the expected value. A bond length (or angle) with $|Z| > 2$ is considered an outlier worth inspection. RMSZ is the root-mean-square of all Z scores of the bond lengths (or angles).

Mol	Type	Chain	Res	Link	Bond lengths			Bond angles		
					Counts	RMSZ	$\# Z > 2$	Counts	RMSZ	$\# Z > 2$
2	NAG	B	1	2,1	14,14,15	0.31	0	17,19,21	0.87	0
2	NAG	B	2	2	14,14,15	0.45	0	17,19,21	1.17	2 (11%)
2	BMA	B	3	2	11,11,12	0.62	0	15,15,17	1.39	4 (26%)
3	NAG	C	1	3,1	14,14,15	0.49	0	17,19,21	1.22	2 (11%)
3	NAG	C	2	3	14,14,15	0.35	0	17,19,21	0.63	0
3	NAG	D	1	3,1	14,14,15	0.48	0	17,19,21	0.74	0

Mol	Type	Chain	Res	Link	Bond lengths			Bond angles		
					Counts	RMSZ	# Z > 2	Counts	RMSZ	# Z > 2
3	NAG	D	2	3	14,14,15	0.34	0	17,19,21	0.88	1 (5%)
4	NAG	E	1	4,1	14,14,15	0.48	0	17,19,21	0.96	2 (11%)
4	NAG	E	2	4	14,14,15	0.36	0	17,19,21	0.81	0
4	BMA	E	3	4	11,11,12	0.33	0	15,15,17	1.15	1 (6%)
4	MAN	E	4	4	11,11,12	0.50	0	15,15,17	0.76	0
5	NAG	F	1	5,1	14,14,15	0.40	0	17,19,21	1.00	1 (5%)
5	NAG	F	2	5	14,14,15	0.43	0	17,19,21	1.17	2 (11%)
5	BMA	F	3	5	11,11,12	0.39	0	15,15,17	0.87	0
5	MAN	F	4	5	11,11,12	0.36	0	15,15,17	0.80	0
5	MAN	F	5	5	11,11,12	0.49	0	15,15,17	0.96	1 (6%)

In the following table, the Chirals column lists the number of chiral outliers, the number of chiral centers analysed, the number of these observed in the model and the number defined in the Chemical Component Dictionary. Similar counts are reported in the Torsion and Rings columns. '-' means no outliers of that kind were identified.

Mol	Type	Chain	Res	Link	Chirals	Torsions	Rings
2	NAG	B	1	2,1	-	0/6/23/26	0/1/1/1
2	NAG	B	2	2	-	2/6/23/26	0/1/1/1
2	BMA	B	3	2	-	2/2/19/22	0/1/1/1
3	NAG	C	1	3,1	-	2/6/23/26	0/1/1/1
3	NAG	C	2	3	-	0/6/23/26	0/1/1/1
3	NAG	D	1	3,1	-	0/6/23/26	0/1/1/1
3	NAG	D	2	3	-	0/6/23/26	0/1/1/1
4	NAG	E	1	4,1	-	2/6/23/26	0/1/1/1
4	NAG	E	2	4	-	2/6/23/26	0/1/1/1
4	BMA	E	3	4	-	1/2/19/22	0/1/1/1
4	MAN	E	4	4	-	0/2/19/22	0/1/1/1
5	NAG	F	1	5,1	-	1/6/23/26	0/1/1/1
5	NAG	F	2	5	-	2/6/23/26	0/1/1/1
5	BMA	F	3	5	-	0/2/19/22	0/1/1/1
5	MAN	F	4	5	-	0/2/19/22	0/1/1/1
5	MAN	F	5	5	-	0/2/19/22	0/1/1/1

There are no bond length outliers.

All (16) bond angle outliers are listed below:

Mol	Chain	Res	Type	Atoms	Z	Observed(°)	Ideal(°)
2	B	3	BMA	C1-C2-C3	3.45	113.91	109.67

Continued on next page...

Continued from previous page...

Mol	Chain	Res	Type	Atoms	Z	Observed(°)	Ideal(°)
4	E	3	BMA	C1-O5-C5	3.29	116.65	112.19
3	C	1	NAG	C4-C3-C2	2.86	115.20	111.02
5	F	2	NAG	C1-O5-C5	2.70	115.85	112.19
2	B	2	NAG	C1-O5-C5	2.63	115.76	112.19
3	D	2	NAG	C1-O5-C5	2.62	115.74	112.19
2	B	2	NAG	C2-N2-C7	2.58	126.57	122.90
5	F	5	MAN	O5-C5-C6	2.50	111.12	107.20
3	C	1	NAG	C1-C2-N2	-2.33	106.50	110.49
2	B	3	BMA	C2-C3-C4	2.32	114.91	110.89
2	B	3	BMA	C3-C4-C5	2.28	114.31	110.24
5	F	1	NAG	O5-C1-C2	-2.23	107.76	111.29
5	F	2	NAG	O4-C4-C5	-2.21	103.80	109.30
4	E	1	NAG	O5-C5-C4	-2.16	105.56	110.83
2	B	3	BMA	O5-C5-C6	2.12	110.53	107.20
4	E	1	NAG	O5-C1-C2	-2.07	108.01	111.29

There are no chirality outliers.

All (14) torsion outliers are listed below:

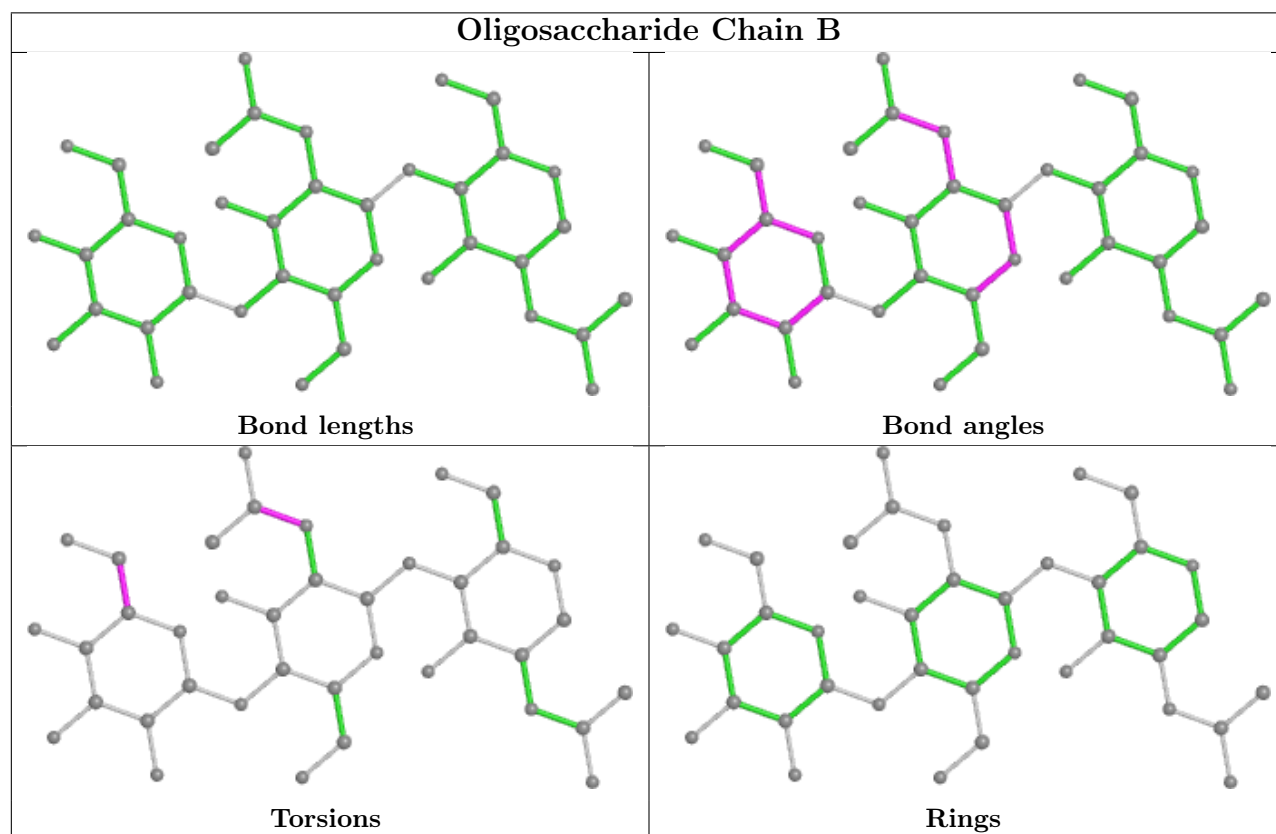
Mol	Chain	Res	Type	Atoms
2	B	2	NAG	C8-C7-N2-C2
3	C	1	NAG	C8-C7-N2-C2
2	B	2	NAG	O7-C7-N2-C2
3	C	1	NAG	O7-C7-N2-C2
2	B	3	BMA	O5-C5-C6-O6
2	B	3	BMA	C4-C5-C6-O6
4	E	1	NAG	C8-C7-N2-C2
4	E	1	NAG	O7-C7-N2-C2
4	E	2	NAG	C8-C7-N2-C2
4	E	2	NAG	O7-C7-N2-C2
5	F	2	NAG	C8-C7-N2-C2
5	F	2	NAG	O7-C7-N2-C2
5	F	1	NAG	C4-C5-C6-O6
4	E	3	BMA	C4-C5-C6-O6

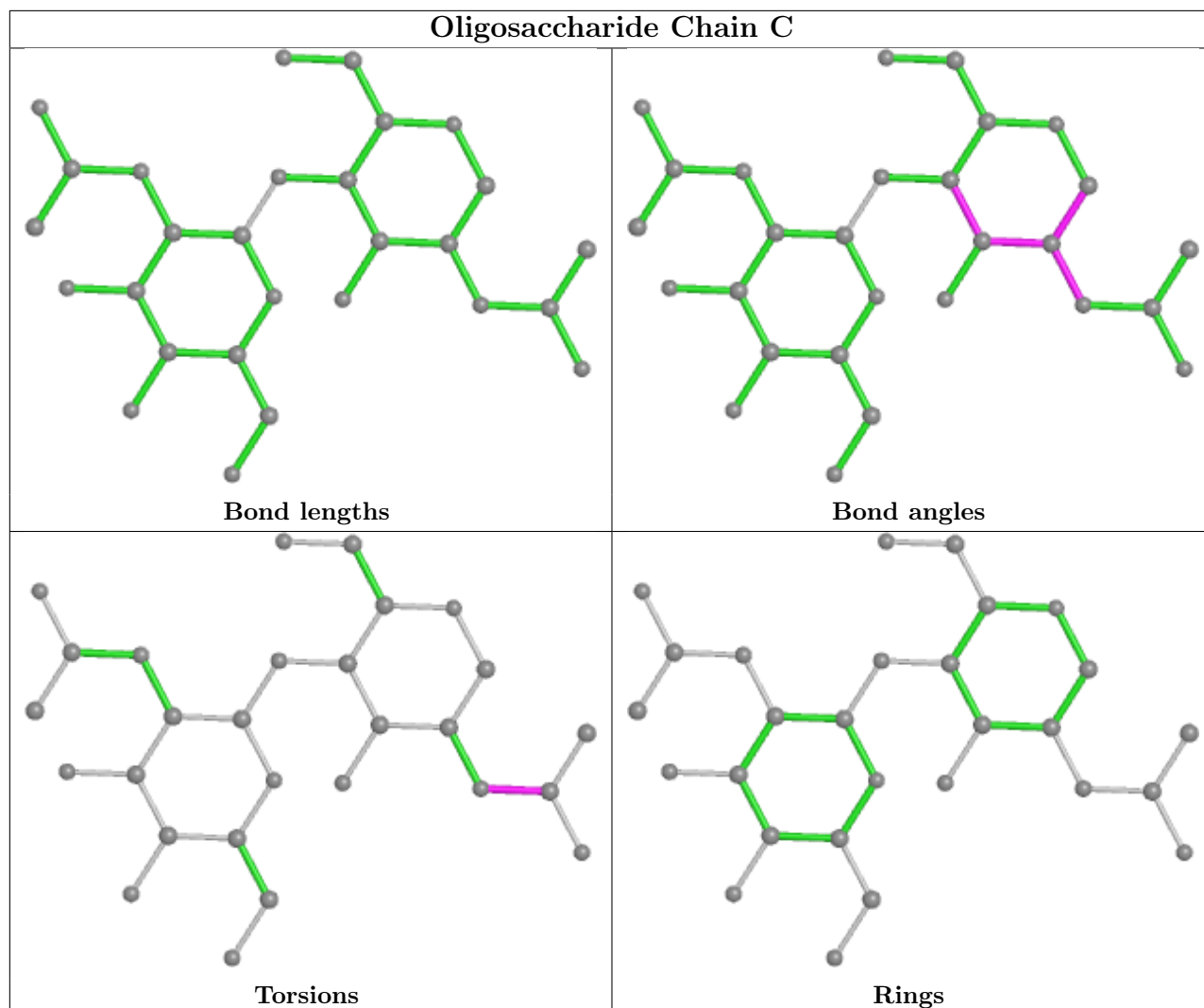
There are no ring outliers.

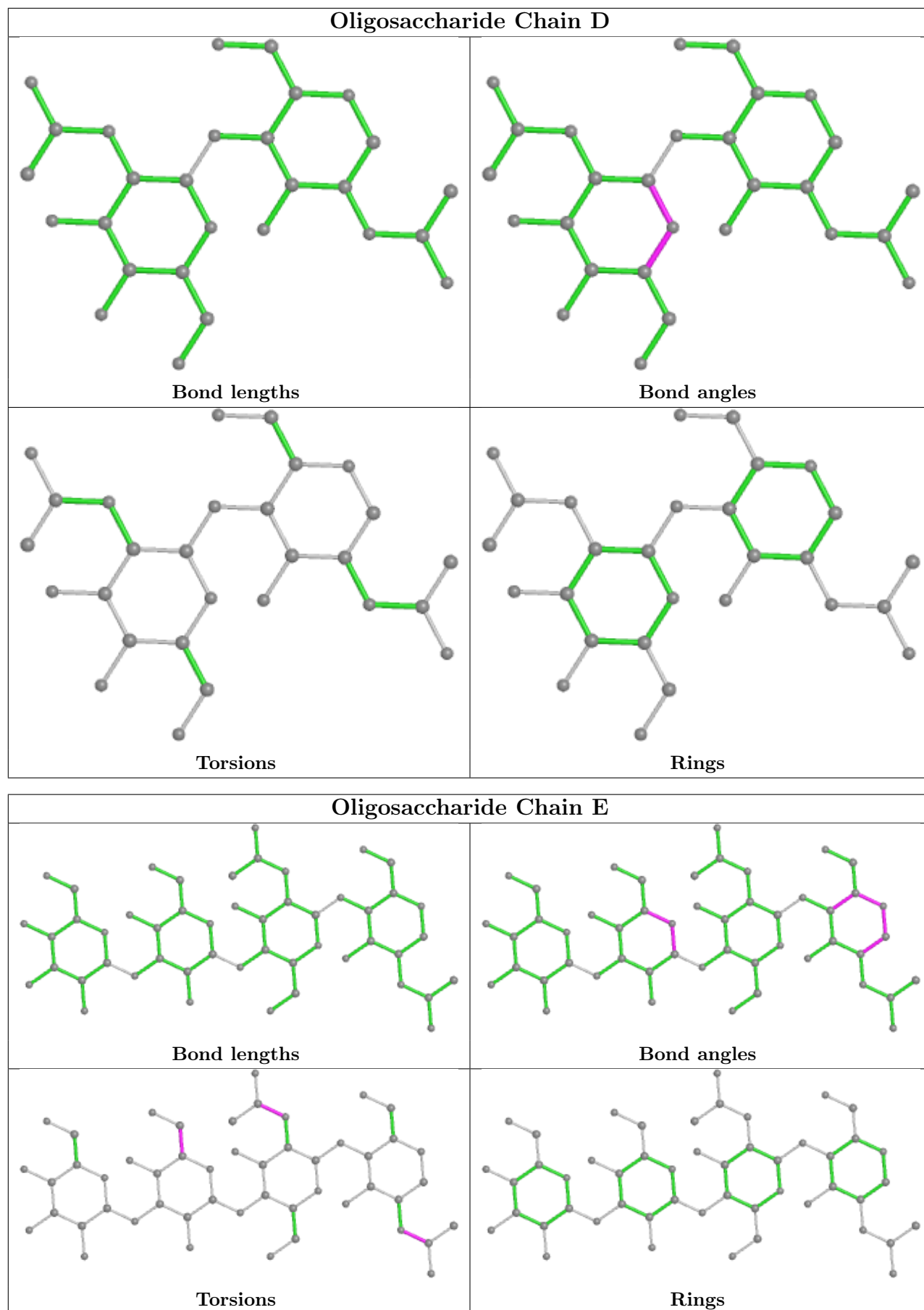
1 monomer is involved in 2 short contacts:

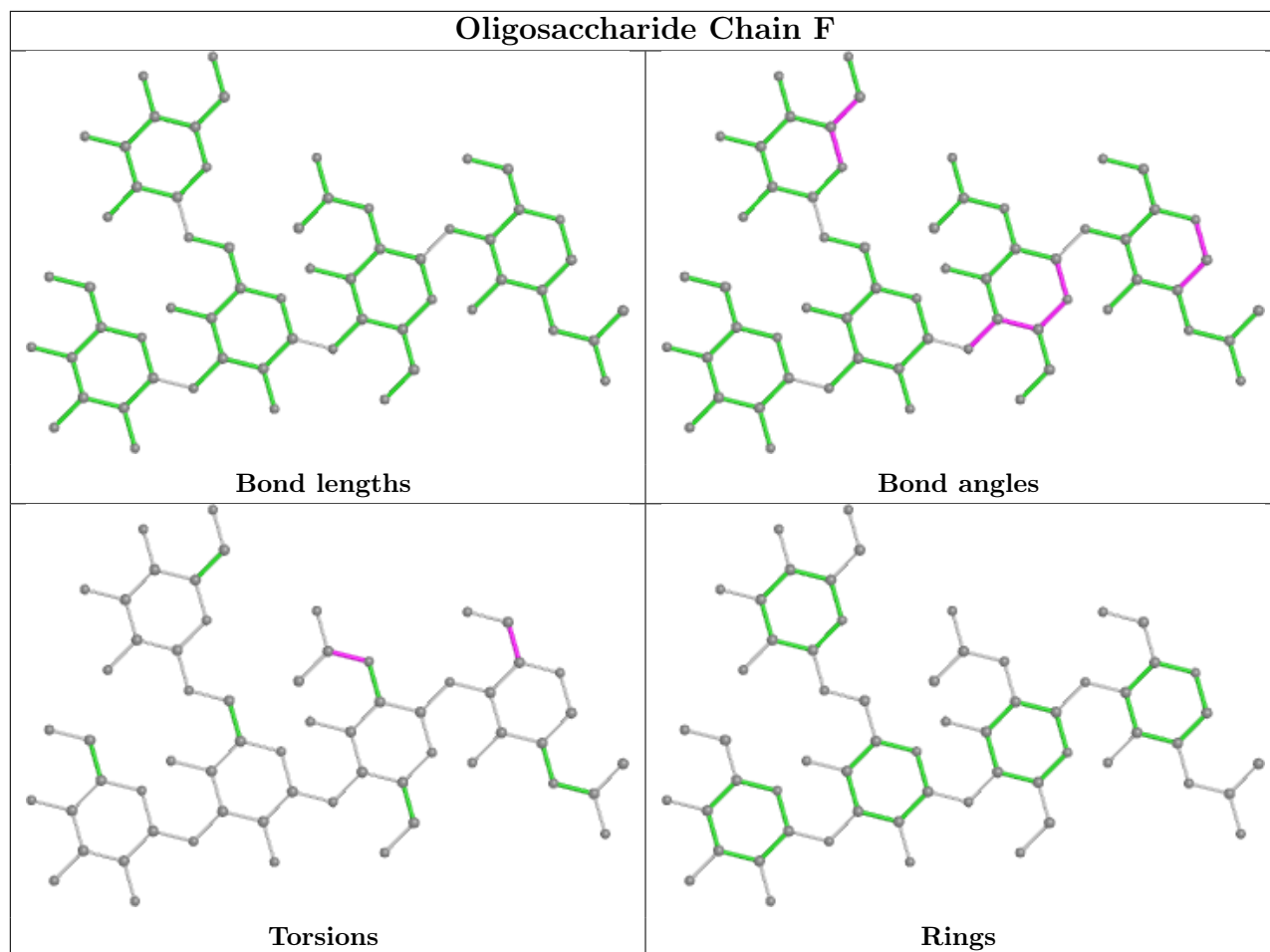
Mol	Chain	Res	Type	Clashes	Symm-Clashes
4	E	4	MAN	2	0

The following is a two-dimensional graphical depiction of Mogul quality analysis of bond lengths, bond angles, torsion angles, and ring geometry for oligosaccharide.









5.6 Ligand geometry [i](#)

Of 14 ligands modelled in this entry, 4 are monoatomic - leaving 10 for Mogul analysis.

In the following table, the Counts columns list the number of bonds (or angles) for which Mogul statistics could be retrieved, the number of bonds (or angles) that are observed in the model and the number of bonds (or angles) that are defined in the Chemical Component Dictionary. The Link column lists molecule types, if any, to which the group is linked. The Z score for a bond length (or angle) is the number of standard deviations the observed value is removed from the expected value. A bond length (or angle) with $|Z| > 2$ is considered an outlier worth inspection. RMSZ is the root-mean-square of all Z scores of the bond lengths (or angles).

Mol	Type	Chain	Res	Link	Bond lengths			Bond angles		
					Counts	RMSZ	# $ Z > 2$	Counts	RMSZ	# $ Z > 2$
14	GOL	A	830	-	5,5,5	0.34	0	5,5,5	0.37	0
12	PEG	A	825	-	6,6,6	0.48	0	5,5,5	0.37	0
6	NAG	A	809	1	14,14,15	0.60	0	17,19,21	1.21	2 (11%)
7	EDO	A	828	-	3,3,3	0.43	0	2,2,2	0.41	0
6	NAG	A	808	1	14,14,15	0.37	0	17,19,21	1.14	1 (5%)
13	LHK	A	829	-	21,21,21	2.69	3 (14%)	29,29,29	1.74	7 (24%)

Mol	Type	Chain	Res	Link	Bond lengths			Bond angles		
					Counts	RMSZ	# Z > 2	Counts	RMSZ	# Z > 2
7	EDO	A	827	-	3,3,3	0.50	0	2,2,2	0.17	0
7	EDO	A	819	-	3,3,3	0.47	0	2,2,2	0.35	0
7	EDO	A	826	-	3,3,3	0.47	0	2,2,2	0.28	0
11	BMA	A	824	-	11,11,12	0.45	0	15,15,17	1.05	1 (6%)

In the following table, the Chirals column lists the number of chiral outliers, the number of chiral centers analysed, the number of these observed in the model and the number defined in the Chemical Component Dictionary. Similar counts are reported in the Torsion and Rings columns. '-' means no outliers of that kind were identified.

Mol	Type	Chain	Res	Link	Chirals	Torsions	Rings
14	GOL	A	830	-	-	0/4/4/4	-
12	PEG	A	825	-	-	1/4/4/4	-
6	NAG	A	809	1	-	2/6/23/26	0/1/1/1
7	EDO	A	828	-	-	1/1/1/1	-
6	NAG	A	808	1	-	2/6/23/26	0/1/1/1
13	LHK	A	829	-	-	12/27/27/27	-
7	EDO	A	827	-	-	0/1/1/1	-
7	EDO	A	819	-	-	0/1/1/1	-
7	EDO	A	826	-	-	1/1/1/1	-
11	BMA	A	824	-	-	0/2/19/22	0/1/1/1

All (3) bond length outliers are listed below:

Mol	Chain	Res	Type	Atoms	Z	Observed(Å)	Ideal(Å)
13	A	829	LHK	OAE-SAV	8.32	1.55	1.43
13	A	829	LHK	OAF-SAV	5.75	1.51	1.43
13	A	829	LHK	SAV-N	4.59	1.67	1.62

All (11) bond angle outliers are listed below:

Mol	Chain	Res	Type	Atoms	Z	Observed(°)	Ideal(°)
13	A	829	LHK	OAF-SAV-N	4.85	115.26	106.44
6	A	809	NAG	C1-O5-C5	3.98	117.58	112.19
13	A	829	LHK	OAF-SAV-OAE	-3.45	115.24	120.40
6	A	808	NAG	C1-O5-C5	3.20	116.53	112.19
11	A	824	BMA	C1-C2-C3	2.99	113.35	109.67
13	A	829	LHK	OAE-SAV-NAO	2.80	111.54	106.44
13	A	829	LHK	CG-CB-CA	-2.75	108.02	113.16
13	A	829	LHK	CAS-CAU-NAO	2.42	116.96	111.71
13	A	829	LHK	OAE-SAV-N	-2.22	102.39	106.44

Continued on next page...

Continued from previous page...

Mol	Chain	Res	Type	Atoms	Z	Observed(°)	Ideal(°)
13	A	829	LHK	OAB-CAQ-CAM	-2.13	115.95	122.80
6	A	809	NAG	O3-C3-C4	-2.01	105.69	110.35

There are no chirality outliers.

All (19) torsion outliers are listed below:

Mol	Chain	Res	Type	Atoms
6	A	808	NAG	C8-C7-N2-C2
6	A	808	NAG	O7-C7-N2-C2
13	A	829	LHK	CAM-CAU-NAO-SAV
13	A	829	LHK	CAU-NAO-SAV-OAE
13	A	829	LHK	CAU-NAO-SAV-N
13	A	829	LHK	C-CA-N-SAV
13	A	829	LHK	CAQ-CAM-CAU-NAO
7	A	826	EDO	O1-C1-C2-O2
13	A	829	LHK	CA-N-SAV-OAF
13	A	829	LHK	CB-CA-N-SAV
13	A	829	LHK	CAQ-CAM-CAU-CAS
13	A	829	LHK	OXT-C-CA-N
12	A	825	PEG	C1-C2-O2-C3
6	A	809	NAG	O5-C5-C6-O6
7	A	828	EDO	O1-C1-C2-O2
6	A	809	NAG	C4-C5-C6-O6
13	A	829	LHK	OAJ-CAS-CAU-CAM
13	A	829	LHK	OAD-CAS-CAU-CAM
13	A	829	LHK	O-C-CA-N

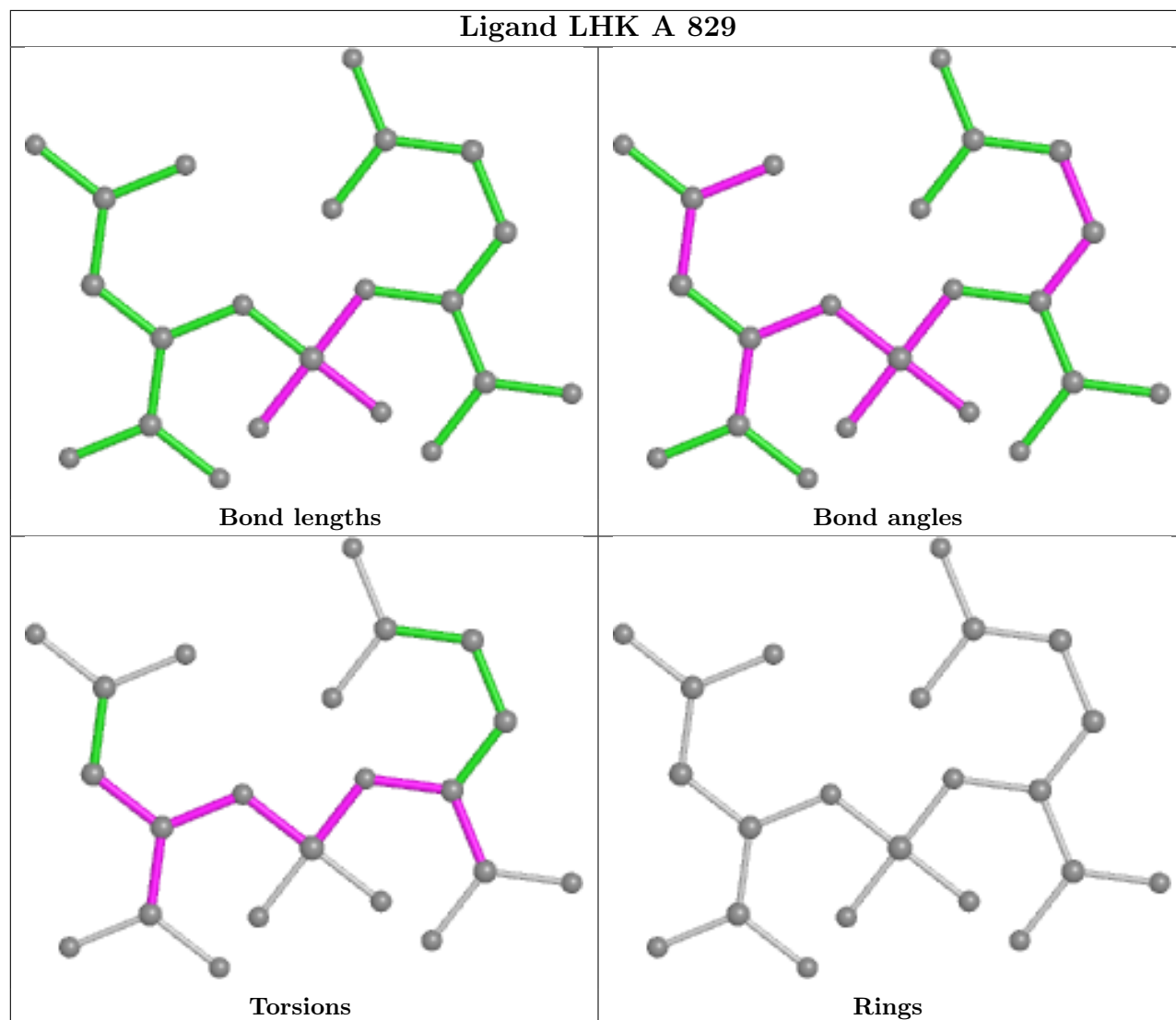
There are no ring outliers.

1 monomer is involved in 1 short contact:

Mol	Chain	Res	Type	Clashes	Symm-Clashes
6	A	809	NAG	1	0

The following is a two-dimensional graphical depiction of Mogul quality analysis of bond lengths, bond angles, torsion angles, and ring geometry for all instances of the Ligand of Interest. In addition, ligands with molecular weight > 250 and outliers as shown on the validation Tables will also be included. For torsion angles, if less than 5% of the Mogul distribution of torsion angles is within 10 degrees of the torsion angle in question, then that torsion angle is considered an outlier. Any bond that is central to one or more torsion angles identified as an outlier by Mogul will be highlighted in the graph. For rings, the root-mean-square deviation (RMSD) between the ring in question and similar rings identified by Mogul is calculated over all ring torsion angles. If the average RMSD is greater than 60 degrees and the minimal RMSD between the ring in question and

any Mogul-identified rings is also greater than 60 degrees, then that ring is considered an outlier. The outliers are highlighted in purple. The color gray indicates Mogul did not find sufficient equivalents in the CSD to analyse the geometry.



5.7 Other polymers [i](#)

There are no such residues in this entry.

5.8 Polymer linkage issues [i](#)

There are no chain breaks in this entry.

6 Fit of model and data [i](#)

6.1 Protein, DNA and RNA chains [i](#)

In the following table, the column labelled ‘#RSRZ > 2’ contains the number (and percentage) of RSRZ outliers, followed by percent RSRZ outliers for the chain as percentile scores relative to all X-ray entries and entries of similar resolution. The OWAB column contains the minimum, median, 95th percentile and maximum values of the occupancy-weighted average B-factor per residue. The column labelled ‘Q < 0.9’ lists the number of (and percentage) of residues with an average occupancy less than 0.9.

Mol	Chain	Analysed	<RSRZ>	#RSRZ>2	OWAB(Å ²)	Q<0.9
1	A	696/707 (98%)	0.09	34 (4%) 29 29	17, 26, 46, 102	0

All (34) RSRZ outliers are listed below:

Mol	Chain	Res	Type	RSRZ
1	A	541	TRP	7.9
1	A	543	THR	5.8
1	A	544	ASN	5.1
1	A	131[A]	ILE	4.3
1	A	135	GLY	4.0
1	A	547	SER	3.9
1	A	155	SER	3.8
1	A	335	GLY	3.8
1	A	153	ASN	3.6
1	A	506	PHE	3.4
1	A	136[A]	ASN	3.3
1	A	154	VAL	3.3
1	A	310	GLY	3.1
1	A	336	ASN	3.0
1	A	546	PHE	2.9
1	A	542	GLU	2.9
1	A	719[A]	VAL	2.9
1	A	487	GLY	2.7
1	A	55	LYS	2.7
1	A	507[A]	SER	2.7
1	A	334	THR	2.7
1	A	337	PHE	2.7
1	A	656[A]	SER	2.7
1	A	341	LYS	2.6
1	A	134	ASP	2.5
1	A	548	GLY	2.5
1	A	652[A]	ASP	2.4

Continued on next page...

Continued from previous page...

Mol	Chain	Res	Type	RSRZ
1	A	124	HIS	2.3
1	A	326	PRO	2.3
1	A	338	SER	2.2
1	A	333	PHE	2.2
1	A	219	LEU	2.2
1	A	545	LYS	2.2
1	A	152	GLU	2.0

6.2 Non-standard residues in protein, DNA, RNA chains [i](#)

There are no non-standard protein/DNA/RNA residues in this entry.

6.3 Carbohydrates [i](#)

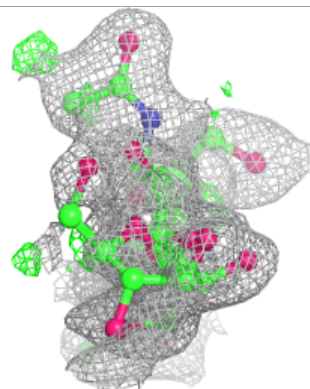
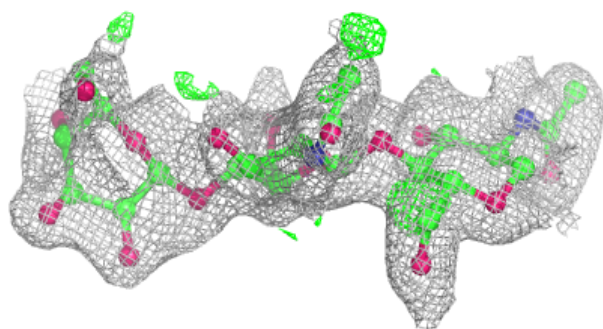
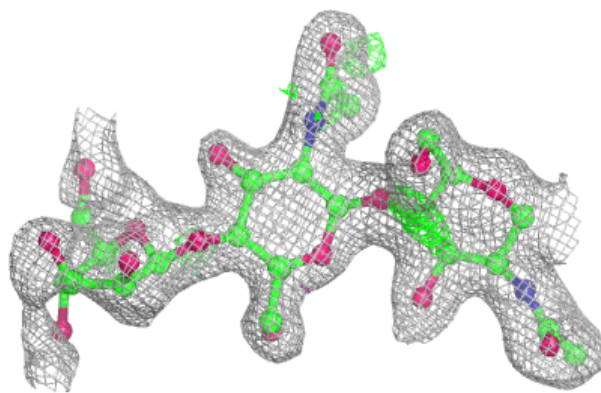
In the following table, the Atoms column lists the number of modelled atoms in the group and the number defined in the chemical component dictionary. The B-factors column lists the minimum, median, 95th percentile and maximum values of B factors of atoms in the group. The column labelled 'Q< 0.9' lists the number of atoms with occupancy less than 0.9.

Mol	Type	Chain	Res	Atoms	RSCC	RSR	B-factors(Å ²)	Q<0.9
2	BMA	B	3	11/12	0.61	0.35	78,89,96,97	0
3	NAG	C	1	14/15	0.66	0.21	46,53,60,61	0
2	NAG	B	2	14/15	0.68	0.25	40,48,56,67	0
3	NAG	C	2	14/15	0.68	0.38	66,68,72,78	0
5	MAN	F	5	11/12	0.72	0.18	50,55,59,64	0
3	NAG	D	2	14/15	0.77	0.25	55,60,68,72	0
3	NAG	D	1	14/15	0.81	0.16	39,43,48,52	0
4	MAN	E	4	11/12	0.82	0.19	45,50,52,52	0
4	BMA	E	3	11/12	0.86	0.17	46,50,54,64	0
5	MAN	F	4	11/12	0.88	0.10	42,43,47,48	0
5	NAG	F	2	14/15	0.90	0.15	37,38,47,56	0
5	NAG	F	1	14/15	0.91	0.08	23,29,37,49	0
4	NAG	E	2	14/15	0.91	0.09	31,38,43,48	0
5	BMA	F	3	11/12	0.92	0.11	39,40,42,46	0
2	NAG	B	1	14/15	0.93	0.10	33,38,44,48	0
4	NAG	E	1	14/15	0.94	0.07	26,29,32,38	0

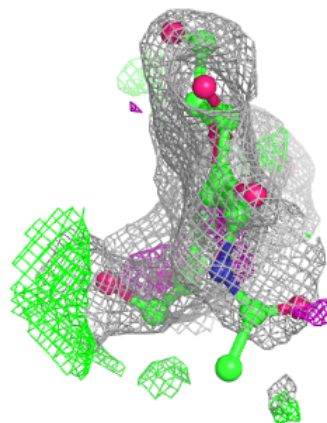
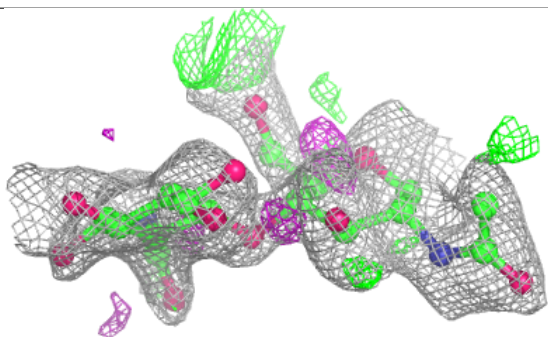
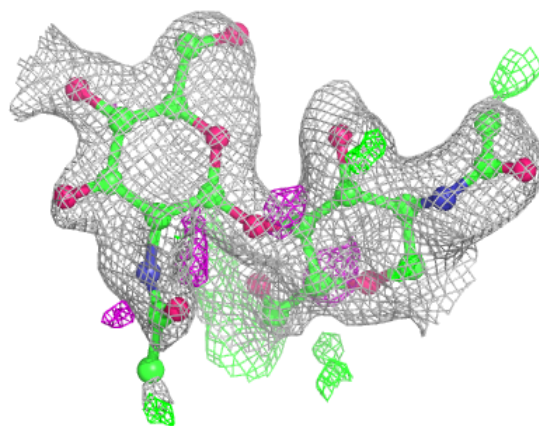
The following is a graphical depiction of the model fit to experimental electron density for oligosaccharide. Each fit is shown from different orientation to approximate a three-dimensional view.

Electron density around Chain B:

$2mF_o-DF_c$ (at 0.7 rmsd) in gray
 mF_o-DF_c (at 3 rmsd) in purple (negative)
and green (positive)

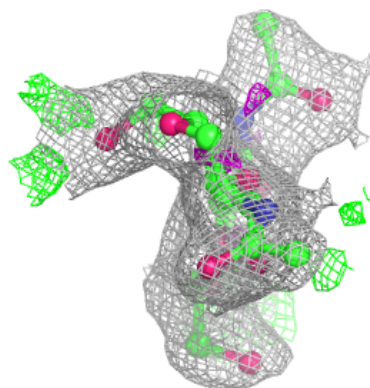
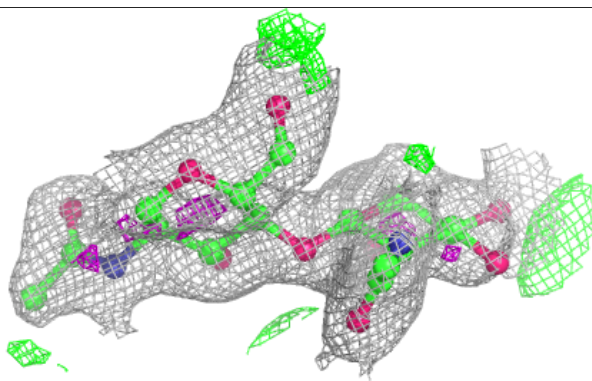
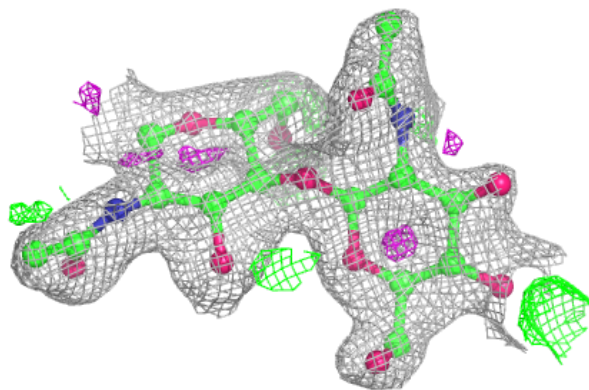
**Electron density around Chain C:**

$2mF_o-DF_c$ (at 0.7 rmsd) in gray
 mF_o-DF_c (at 3 rmsd) in purple (negative)
and green (positive)

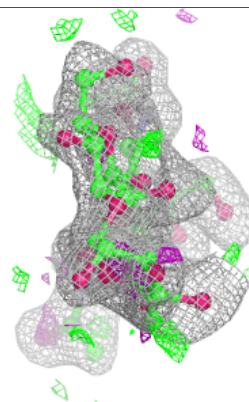
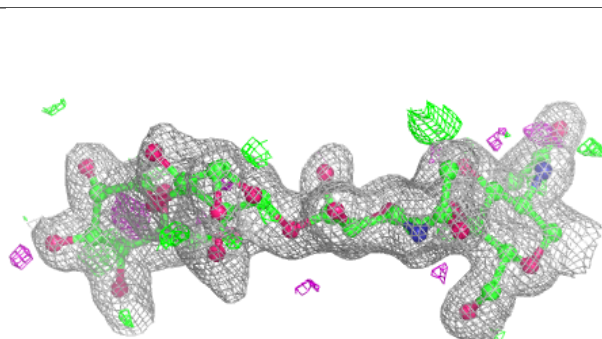
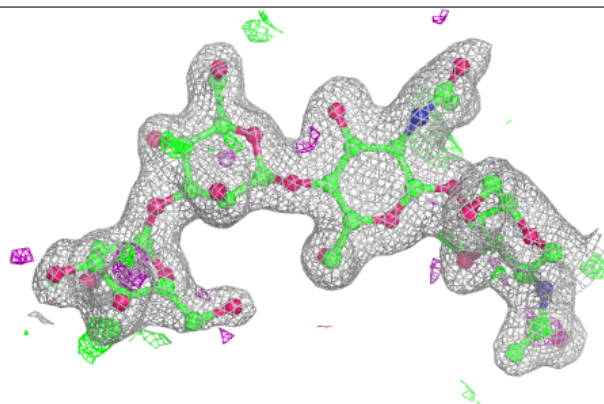


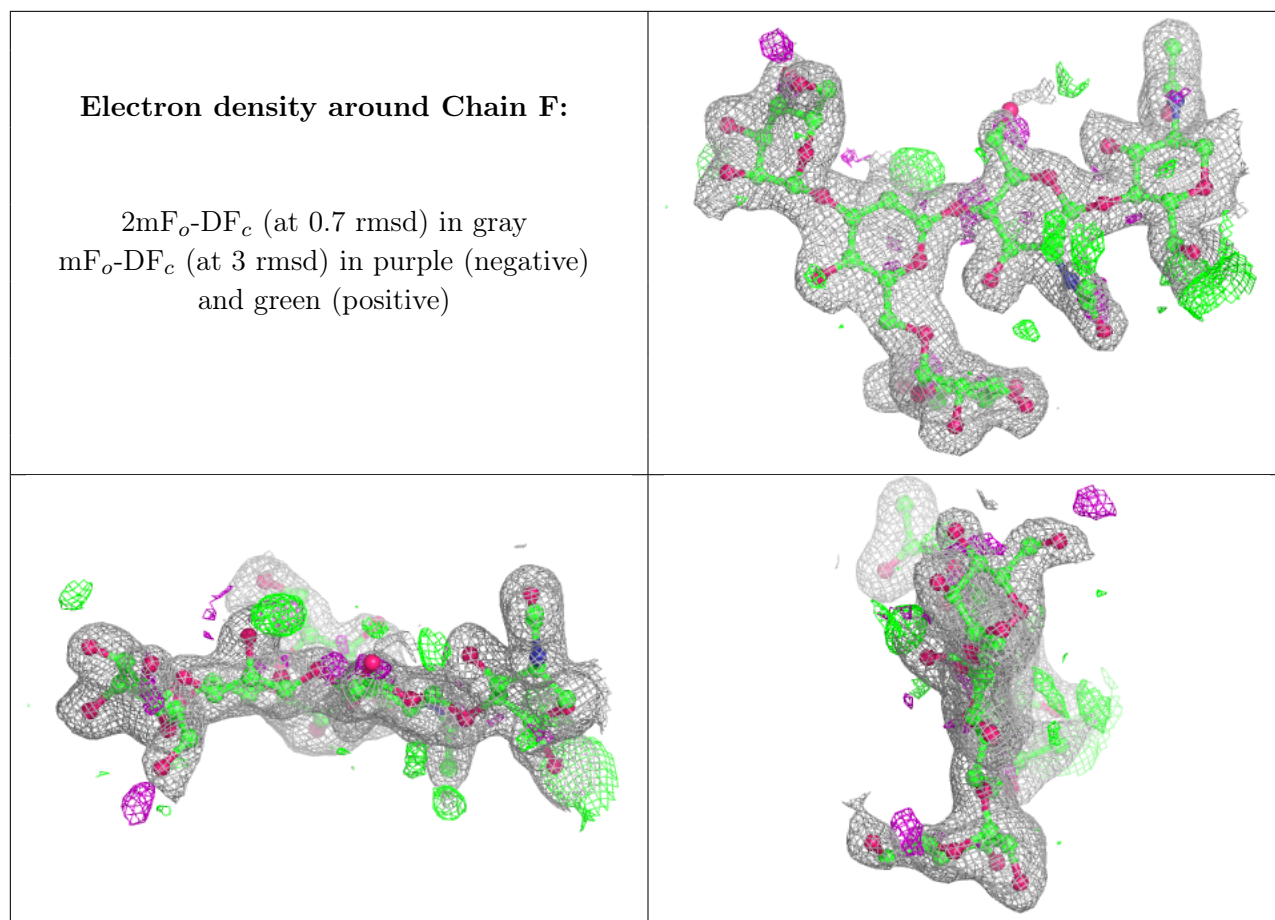
Electron density around Chain D:

$2mF_o-DF_c$ (at 0.7 rmsd) in gray
 mF_o-DF_c (at 3 rmsd) in purple (negative)
and green (positive)

**Electron density around Chain E:**

$2mF_o-DF_c$ (at 0.7 rmsd) in gray
 mF_o-DF_c (at 3 rmsd) in purple (negative)
and green (positive)





6.4 Ligands [i](#)

In the following table, the Atoms column lists the number of modelled atoms in the group and the number defined in the chemical component dictionary. The B-factors column lists the minimum, median, 95th percentile and maximum values of B factors of atoms in the group. The column labelled 'Q< 0.9' lists the number of atoms with occupancy less than 0.9.

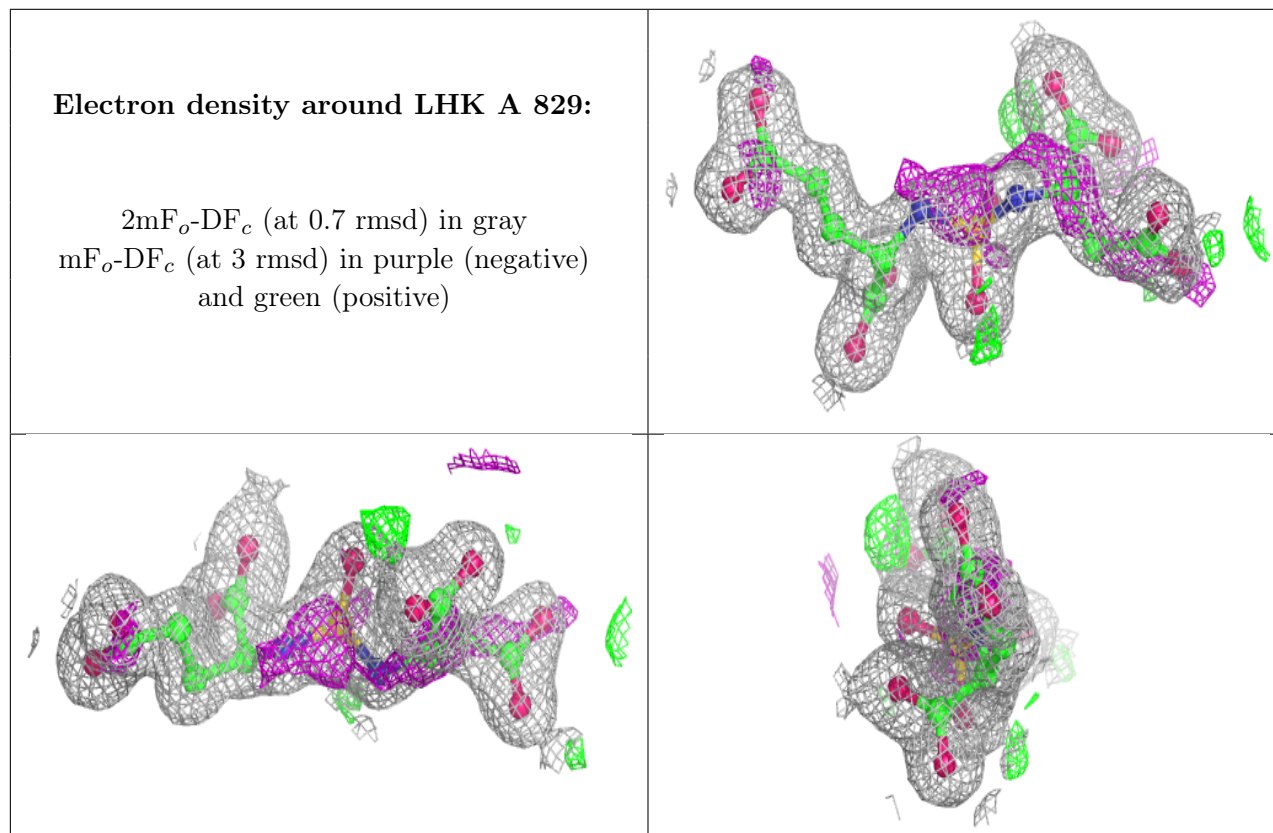
Mol	Type	Chain	Res	Atoms	RSCC	RSR	B-factors(Å ²)	Q<0.9
11	BMA	A	824	11/12	0.14	0.30	117,124,128,128	0
7	EDO	A	827	4/4	0.63	0.11	69,71,72,76	0
7	EDO	A	819	4/4	0.64	0.38	95,95,96,96	0
14	GOL	A	830	6/6	0.76	0.18	35,40,41,48	0
7	EDO	A	828	4/4	0.77	0.23	77,78,78,78	0
7	EDO	A	826	4/4	0.77	0.13	79,80,82,83	0
6	NAG	A	808	14/15	0.77	0.20	68,77,84,87	0
12	PEG	A	825	7/7	0.87	0.12	52,53,57,58	0
6	NAG	A	809	14/15	0.88	0.09	30,44,52,53	0
13	LHK	A	829	22/22	0.96	0.09	22,25,35,38	0
8	ZN	A	821	1/1	0.99	0.07	19,19,19,19	0
10	CL	A	823	1/1	0.99	0.09	22,22,22,22	0

Continued on next page...

Continued from previous page...

Mol	Type	Chain	Res	Atoms	RSCC	RSR	B-factors(\AA^2)	Q<0.9
9	CA	A	822	1/1	1.00	0.09	18,18,18,18	0
8	ZN	A	820	1/1	1.00	0.07	20,20,20,20	0

The following is a graphical depiction of the model fit to experimental electron density of all instances of the Ligand of Interest. In addition, ligands with molecular weight > 250 and outliers as shown on the geometry validation Tables will also be included. Each fit is shown from different orientation to approximate a three-dimensional view.



6.5 Other polymers [i](#)

There are no such residues in this entry.