



# Full wwPDB X-ray Structure Validation Report ⓘ

Aug 15, 2023 – 09:09 PM EDT

PDB ID : 1SOM  
Title : TORPEDO CALIFORNICA ACETYLCHOLINESTERASE INHIBITED BY NERVE AGENT GD (SOMAN).  
Authors : Greenblatt, H.M.; Millard, C.B.; Sussman, J.L.; Silman, I.  
Deposited on : 1999-03-17  
Resolution : 2.20 Å(reported)

This is a Full wwPDB X-ray Structure Validation Report for a publicly released PDB entry.

We welcome your comments at [validation@mail.wwpdb.org](mailto:validation@mail.wwpdb.org)

A user guide is available at

<https://www.wwpdb.org/validation/2017/XrayValidationReportHelp>

with specific help available everywhere you see the ⓘ symbol.

The types of validation reports are described at

<http://www.wwpdb.org/validation/2017/FAQs#types>.

---

The following versions of software and data (see [references ⓘ](#)) were used in the production of this report:

MolProbity : 4.02b-467  
Mogul : 1.8.5 (274361), CSD as541be (2020)  
Xtriage (Phenix) : 1.13  
EDS : 2.35  
Percentile statistics : 20191225.v01 (using entries in the PDB archive December 25th 2019)  
Refmac : 5.8.0158  
CCP4 : 7.0.044 (Gargrove)  
Ideal geometry (proteins) : Engh & Huber (2001)  
Ideal geometry (DNA, RNA) : Parkinson et al. (1996)  
Validation Pipeline (wwPDB-VP) : 2.35

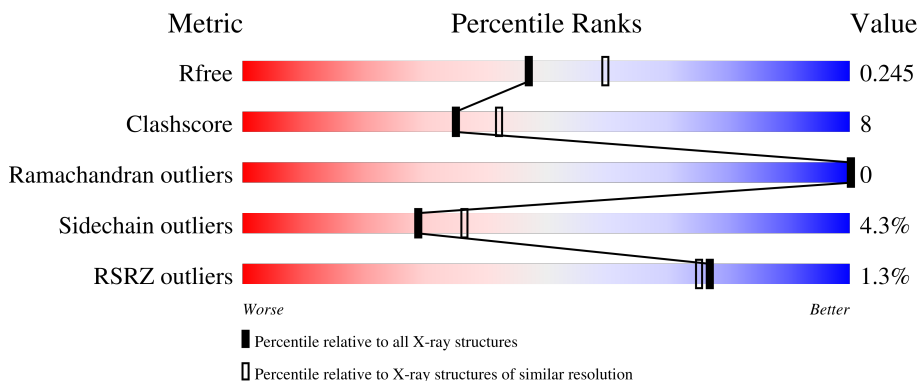
# 1 Overall quality at a glance

The following experimental techniques were used to determine the structure:

*X-RAY DIFFRACTION*

The reported resolution of this entry is 2.20 Å.

Percentile scores (ranging between 0-100) for global validation metrics of the entry are shown in the following graphic. The table shows the number of entries on which the scores are based.



Metric	Whole archive (#Entries)	Similar resolution (#Entries, resolution range(Å))
$R_{free}$	130704	4898 (2.20-2.20)
Clashscore	141614	5594 (2.20-2.20)
Ramachandran outliers	138981	5503 (2.20-2.20)
Sidechain outliers	138945	5504 (2.20-2.20)
RSRZ outliers	127900	4800 (2.20-2.20)

The table below summarises the geometric issues observed across the polymeric chains and their fit to the electron density. The red, orange, yellow and green segments of the lower bar indicate the fraction of residues that contain outliers for  $\geq 3$ , 2, 1 and 0 types of geometric quality criteria respectively. A grey segment represents the fraction of residues that are not modelled. The numeric value for each fraction is indicated below the corresponding segment, with a dot representing fractions  $\leq 5\%$ . The upper red bar (where present) indicates the fraction of residues that have poor fit to the electron density. The numeric value is given above the bar.

Mol	Chain	Length	Quality of chain
1	A	543	

## 2 Entry composition [i](#)

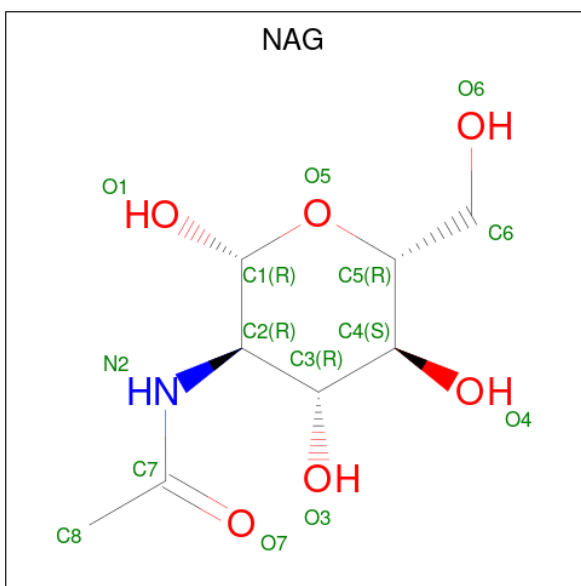
There are 5 unique types of molecules in this entry. The entry contains 4400 atoms, of which 0 are hydrogens and 0 are deuteriums.

In the tables below, the ZeroOcc column contains the number of atoms modelled with zero occupancy, the AltConf column contains the number of residues with at least one atom in alternate conformation and the Trace column contains the number of residues modelled with at most 2 atoms.

- Molecule 1 is a protein called PROTEIN (ACETYLCHOLINESTERASE).

Mol	Chain	Residues	Atoms					ZeroOcc	AltConf	Trace
			Total	C	N	O	S			
1	A	528	4174	2691	701	760	22	0	0	0

- Molecule 2 is 2-acetamido-2-deoxy-beta-D-glucopyranose (three-letter code: NAG) (formula:  $C_8H_{15}NO_6$ ).

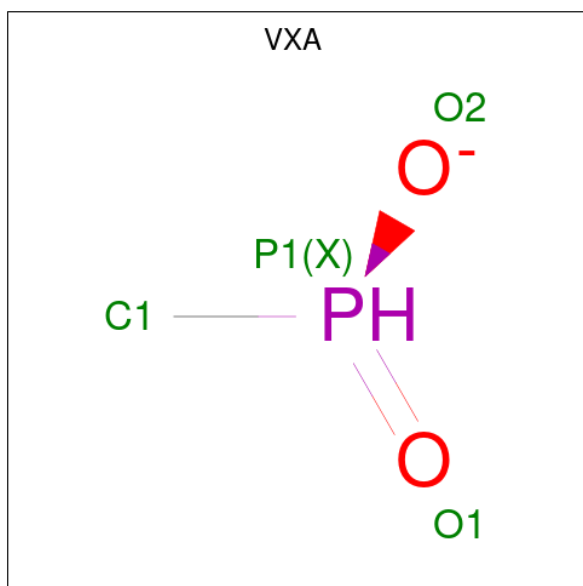


Mol	Chain	Residues	Atoms				ZeroOcc	AltConf
			Total	C	N	O		
2	A	1	14	8	1	5	0	0
2	A	1	14	8	1	5	0	0

- Molecule 3 is UNKNOWN ATOM OR ION (three-letter code: UNX) (formula: X).

Mol	Chain	Residues	Atoms	ZeroOcc	AltConf
3	A	10	Total X 10 10	10	0

- Molecule 4 is METHYLPHOSPHONIC ACID ESTER GROUP (three-letter code: VXA) (formula:  $\text{CH}_4\text{O}_2\text{P}$ ).



Mol	Chain	Residues	Atoms	ZeroOcc	AltConf
4	A	1	Total C O P 4 1 2 1	0	0

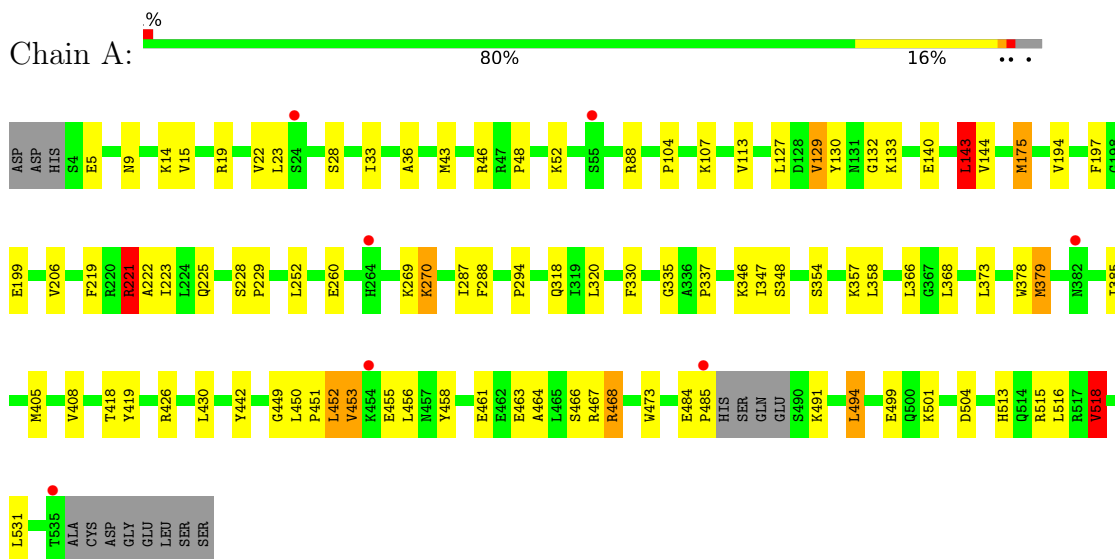
- Molecule 5 is water.

Mol	Chain	Residues	Atoms	ZeroOcc	AltConf
5	A	184	Total O 184 184	0	0

### 3 Residue-property plots [i](#)

These plots are drawn for all protein, RNA, DNA and oligosaccharide chains in the entry. The first graphic for a chain summarises the proportions of the various outlier classes displayed in the second graphic. The second graphic shows the sequence view annotated by issues in geometry and electron density. Residues are color-coded according to the number of geometric quality criteria for which they contain at least one outlier: green = 0, yellow = 1, orange = 2 and red = 3 or more. A red dot above a residue indicates a poor fit to the electron density ( $RSRZ > 2$ ). Stretches of 2 or more consecutive residues without any outlier are shown as a green connector. Residues present in the sample, but not in the model, are shown in grey.

- Molecule 1: PROTEIN (ACETYLCHOLINESTERASE)



## 4 Data and refinement statistics

Property	Value	Source
Space group	P 31 2 1	Depositor
Cell constants a, b, c, $\alpha$ , $\beta$ , $\gamma$	111.56Å 111.56Å 137.00Å 90.00° 90.00° 120.00°	Depositor
Resolution (Å)	29.50 – 2.20 29.19 – 2.20	Depositor EDS
% Data completeness (in resolution range)	96.5 (29.50-2.20) 96.6 (29.19-2.20)	Depositor EDS
$R_{merge}$	(Not available)	Depositor
$R_{sym}$	0.05	Depositor
$\langle I/\sigma(I) \rangle$ <sup>1</sup>	2.53 (at 2.20Å)	Xtrriage
Refinement program	CNS	Depositor
R, $R_{free}$	0.210 , 0.251 0.203 , 0.245	Depositor DCC
$R_{free}$ test set	2460 reflections (5.04%)	wwPDB-VP
Wilson B-factor (Å <sup>2</sup> )	31.9	Xtrriage
Anisotropy	0.606	Xtrriage
Bulk solvent $k_{sol}$ (e/Å <sup>3</sup> ), $B_{sol}$ (Å <sup>2</sup> )	0.35 , 34.7	EDS
L-test for twinning <sup>2</sup>	$\langle  L  \rangle = 0.50$ , $\langle L^2 \rangle = 0.34$	Xtrriage
Estimated twinning fraction	0.018 for -h,-k,l	Xtrriage
$F_o, F_c$ correlation	0.95	EDS
Total number of atoms	4400	wwPDB-VP
Average B, all atoms (Å <sup>2</sup> )	34.0	wwPDB-VP

Xtrriage's analysis on translational NCS is as follows: *The largest off-origin peak in the Patterson function is 3.72% of the height of the origin peak. No significant pseudotranslation is detected.*

<sup>1</sup>Intensities estimated from amplitudes.

<sup>2</sup>Theoretical values of  $\langle |L| \rangle$ ,  $\langle L^2 \rangle$  for acentric reflections are 0.5, 0.333 respectively for untwinned datasets, and 0.375, 0.2 for perfectly twinned datasets.

## 5 Model quality [i](#)

### 5.1 Standard geometry [i](#)

Bond lengths and bond angles in the following residue types are not validated in this section: VXA, NAG, UNX

The Z score for a bond length (or angle) is the number of standard deviations the observed value is removed from the expected value. A bond length (or angle) with  $|Z| > 5$  is considered an outlier worth inspection. RMSZ is the root-mean-square of all Z scores of the bond lengths (or angles).

Mol	Chain	Bond lengths		Bond angles	
		RMSZ	# $ Z  > 5$	RMSZ	# $ Z  > 5$
1	A	0.86	1/4295 (0.0%)	0.89	9/5832 (0.2%)

Chiral center outliers are detected by calculating the chiral volume of a chiral center and verifying if the center is modelled as a planar moiety or with the opposite hand. A planarity outlier is detected by checking planarity of atoms in a peptide group, atoms in a mainchain group or atoms of a sidechain that are expected to be planar.

Mol	Chain	#Chirality outliers	#Planarity outliers
1	A	0	1

All (1) bond length outliers are listed below:

Mol	Chain	Res	Type	Atoms	Z	Observed(Å)	Ideal(Å)
1	A	175	MET	SD-CE	-5.27	1.48	1.77

All (9) bond angle outliers are listed below:

Mol	Chain	Res	Type	Atoms	Z	Observed(°)	Ideal(°)
1	A	518	VAL	CB-CA-C	-6.27	99.50	111.40
1	A	494	LEU	CA-CB-CG	6.09	129.30	115.30
1	A	143	LEU	CA-CB-CG	-5.98	101.54	115.30
1	A	129	VAL	CB-CA-C	-5.87	100.26	111.40
1	A	221	ARG	NE-CZ-NH2	-5.74	117.43	120.30
1	A	452	LEU	CA-CB-CG	5.18	127.21	115.30
1	A	221	ARG	NE-CZ-NH1	5.11	122.86	120.30
1	A	491	LYS	N-CA-C	5.08	124.71	111.00
1	A	518	VAL	CG1-CB-CG2	5.07	119.01	110.90

There are no chirality outliers.

All (1) planarity outliers are listed below:

Mol	Chain	Res	Type	Group
1	A	442	TYR	Sidechain

## 5.2 Too-close contacts [i](#)

In the following table, the Non-H and H(model) columns list the number of non-hydrogen atoms and hydrogen atoms in the chain respectively. The H(added) column lists the number of hydrogen atoms added and optimized by MolProbity. The Clashes column lists the number of clashes within the asymmetric unit, whereas Symm-Clashes lists symmetry-related clashes.

Mol	Chain	Non-H	H(model)	H(added)	Clashes	Symm-Clashes
1	A	4174	0	4016	68	0
2	A	28	0	26	0	0
3	A	10	0	0	0	0
4	A	4	0	3	0	0
5	A	184	0	0	3	0
All	All	4400	0	4045	68	0

The all-atom clashscore is defined as the number of clashes found per 1000 atoms (including hydrogen atoms). The all-atom clashscore for this structure is 8.

All (68) close contacts within the same asymmetric unit are listed below, sorted by their clash magnitude.

Atom-1	Atom-2	Interatomic distance (Å)	Clash overlap (Å)
1:A:366:LEU:HD23	1:A:531:LEU:HD11	1.41	1.02
1:A:194:VAL:HG12	5:A:744:HOH:O	1.69	0.93
1:A:468:ARG:HD3	5:A:663:HOH:O	1.89	0.72
1:A:270:LYS:HE3	1:A:270:LYS:HA	1.70	0.71
1:A:260:GLU:H	1:A:260:GLU:CD	1.93	0.71
1:A:531:LEU:HD12	1:A:531:LEU:O	1.90	0.70
1:A:452:LEU:HD13	1:A:467:ARG:NH2	2.09	0.67
1:A:484:GLU:OE1	1:A:485:PRO:HD2	1.95	0.66
1:A:36:ALA:HB2	1:A:175:MET:CE	2.26	0.66
1:A:346:LYS:HG2	1:A:385:ILE:HD13	1.78	0.66
1:A:373:LEU:HD12	1:A:378:TRP:HE1	1.63	0.63
1:A:36:ALA:HB2	1:A:175:MET:HE3	1.82	0.61
1:A:499:GLU:HG2	1:A:501:LYS:HE3	1.83	0.61
1:A:366:LEU:CD2	1:A:531:LEU:HD11	2.24	0.58
1:A:419:TYR:CZ	1:A:494:LEU:HD13	2.38	0.58
1:A:426:ARG:HG3	1:A:430:LEU:HD12	1.87	0.57
1:A:194:VAL:HG13	1:A:219:PHE:HA	1.86	0.57
1:A:531:LEU:HD12	1:A:531:LEU:C	2.25	0.55

*Continued on next page...*



*Continued from previous page...*

Atom-1	Atom-2	Interatomic distance (Å)	Clash overlap (Å)
1:A:228:SER:HB2	1:A:229:PRO:HD2	1.87	0.55
1:A:287:ILE:HD11	1:A:335:GLY:HA3	1.89	0.55
1:A:194:VAL:CG1	5:A:744:HOH:O	2.42	0.54
1:A:43:MET:SD	1:A:46:ARG:HD2	2.47	0.54
1:A:223:ILE:HA	1:A:320:LEU:O	2.07	0.54
1:A:449:GLY:HA2	1:A:466:SER:OG	2.08	0.54
1:A:36:ALA:CB	1:A:175:MET:CE	2.86	0.54
1:A:453:VAL:HG22	1:A:456:LEU:HG	1.90	0.54
1:A:504:ASP:OD2	1:A:513:HIS:NE2	2.35	0.54
1:A:499:GLU:HB3	1:A:501:LYS:HG3	1.91	0.52
1:A:461:GLU:H	1:A:461:GLU:CD	2.14	0.52
1:A:22:VAL:HG13	1:A:133:LYS:HG3	1.92	0.52
1:A:379:MET:HE3	1:A:379:MET:HA	1.93	0.51
1:A:515:ARG:O	1:A:518:VAL:HG22	2.10	0.51
1:A:452:LEU:HD13	1:A:467:ARG:CZ	2.40	0.51
1:A:197:PHE:CB	1:A:223:ILE:HB	2.41	0.50
1:A:127:LEU:HD12	1:A:130:TYR:CE2	2.47	0.50
1:A:36:ALA:CB	1:A:175:MET:HE3	2.42	0.49
1:A:453:VAL:HG22	1:A:453:VAL:O	2.13	0.49
1:A:15:VAL:HG21	1:A:33:ILE:HG12	1.95	0.49
1:A:260:GLU:CD	1:A:260:GLU:N	2.67	0.47
1:A:451:PRO:HA	1:A:458:TYR:CD1	2.50	0.47
1:A:464:ALA:O	1:A:468:ARG:HG2	2.15	0.47
1:A:408:VAL:CG2	1:A:418:THR:HG21	2.44	0.47
1:A:23:LEU:HD11	1:A:452:LEU:HD12	1.98	0.46
1:A:405:MET:HA	1:A:408:VAL:HG12	1.98	0.46
1:A:5:GLU:OE2	1:A:104:PRO:HA	2.16	0.45
1:A:452:LEU:HD22	1:A:463:GLU:HG3	1.98	0.45
1:A:426:ARG:CG	1:A:430:LEU:HD12	2.46	0.45
1:A:357:LYS:HD3	1:A:368:LEU:HD11	1.98	0.44
1:A:252:LEU:HB3	1:A:269:LYS:HE3	2.00	0.43
1:A:484:GLU:OE1	1:A:484:GLU:HA	2.19	0.43
1:A:197:PHE:HA	1:A:223:ILE:O	2.18	0.43
1:A:113:VAL:HA	1:A:144:VAL:O	2.19	0.43
1:A:132:GLY:HA3	1:A:143:LEU:HD22	2.00	0.43
1:A:194:VAL:CG1	1:A:219:PHE:HA	2.49	0.43
1:A:199:GLU:HA	1:A:225:GLN:O	2.19	0.42
1:A:221:ARG:HD3	1:A:318:GLN:OE1	2.19	0.42
1:A:48:PRO:HB2	1:A:175:MET:CE	2.49	0.42
1:A:107:LYS:HA	1:A:107:LYS:HD3	1.76	0.42
1:A:408:VAL:HG23	1:A:418:THR:HG21	2.01	0.42

*Continued on next page...*

Continued from previous page...

Atom-1	Atom-2	Interatomic distance (Å)	Clash overlap (Å)
1:A:450:LEU:N	1:A:451:PRO:CD	2.83	0.42
1:A:143:LEU:HG	1:A:144:VAL:N	2.35	0.42
1:A:347:ILE:HG22	1:A:348:SER:O	2.20	0.42
1:A:337:PRO:HG3	1:A:354:SER:OG	2.20	0.41
1:A:197:PHE:HB2	1:A:223:ILE:HB	2.01	0.41
1:A:206:VAL:CG1	1:A:222:ALA:HB1	2.50	0.41
1:A:455:GLU:H	1:A:455:GLU:CD	2.23	0.41
1:A:450:LEU:O	1:A:453:VAL:HG13	2.21	0.40
1:A:9:ASN:HD21	1:A:14:LYS:HE2	1.86	0.40

There are no symmetry-related clashes.

## 5.3 Torsion angles [i](#)

### 5.3.1 Protein backbone [i](#)

In the following table, the Percentiles column shows the percent Ramachandran outliers of the chain as a percentile score with respect to all X-ray entries followed by that with respect to entries of similar resolution.

The Analysed column shows the number of residues for which the backbone conformation was analysed, and the total number of residues.

Mol	Chain	Analysed	Favoured	Allowed	Outliers	Percentiles
1	A	524/543 (96%)	501 (96%)	23 (4%)	0	<b>100</b> <b>100</b>

There are no Ramachandran outliers to report.

### 5.3.2 Protein sidechains [i](#)

In the following table, the Percentiles column shows the percent sidechain outliers of the chain as a percentile score with respect to all X-ray entries followed by that with respect to entries of similar resolution.

The Analysed column shows the number of residues for which the sidechain conformation was analysed, and the total number of residues.

Mol	Chain	Analysed	Rotameric	Outliers	Percentiles
1	A	447/474 (94%)	428 (96%)	19 (4%)	<b>29</b> <b>36</b>

All (19) residues with a non-rotameric sidechain are listed below:

Mol	Chain	Res	Type
1	A	19	ARG
1	A	28	SER
1	A	52	LYS
1	A	88	ARG
1	A	129	VAL
1	A	140	GLU
1	A	143	LEU
1	A	221	ARG
1	A	270	LYS
1	A	288	PHE
1	A	294	PRO
1	A	330	PHE
1	A	358	LEU
1	A	379	MET
1	A	453	VAL
1	A	468	ARG
1	A	473	TRP
1	A	516	LEU
1	A	518	VAL

Sometimes sidechains can be flipped to improve hydrogen bonding and reduce clashes. All (4) such sidechains are listed below:

Mol	Chain	Res	Type
1	A	9	ASN
1	A	68	GLN
1	A	374	GLN
1	A	457	ASN

### 5.3.3 RNA [i](#)

There are no RNA molecules in this entry.

## 5.4 Non-standard residues in protein, DNA, RNA chains [i](#)

There are no non-standard protein/DNA/RNA residues in this entry.

## 5.5 Carbohydrates [i](#)

There are no monosaccharides in this entry.

## 5.6 Ligand geometry

Of 13 ligands modelled in this entry, 10 are unknown - leaving 3 for Mogul analysis.

In the following table, the Counts columns list the number of bonds (or angles) for which Mogul statistics could be retrieved, the number of bonds (or angles) that are observed in the model and the number of bonds (or angles) that are defined in the Chemical Component Dictionary. The Link column lists molecule types, if any, to which the group is linked. The Z score for a bond length (or angle) is the number of standard deviations the observed value is removed from the expected value. A bond length (or angle) with  $|Z| > 2$  is considered an outlier worth inspection. RMSZ is the root-mean-square of all Z scores of the bond lengths (or angles).

Mol	Type	Chain	Res	Link	Bond lengths			Bond angles		
					Counts	RMSZ	# Z  > 2	Counts	RMSZ	# Z  > 2
4	VXA	A	1010	1	0,3,3	-	-	0,3,3	-	-
2	NAG	A	545	1	14,14,15	0.89	0	17,19,21	1.01	2 (11%)
2	NAG	A	544	1	14,14,15	0.65	0	17,19,21	0.77	0

In the following table, the Chirals column lists the number of chiral outliers, the number of chiral centers analysed, the number of these observed in the model and the number defined in the Chemical Component Dictionary. Similar counts are reported in the Torsion and Rings columns. '-' means no outliers of that kind were identified.

Mol	Type	Chain	Res	Link	Chirals	Torsions	Rings
2	NAG	A	545	1	-	2/6/23/26	0/1/1/1
2	NAG	A	544	1	-	0/6/23/26	0/1/1/1

There are no bond length outliers.

All (2) bond angle outliers are listed below:

Mol	Chain	Res	Type	Atoms	Z	Observed(°)	Ideal(°)
2	A	545	NAG	C4-C3-C2	-2.23	107.75	111.02
2	A	545	NAG	C2-N2-C7	-2.16	119.83	122.90

There are no chirality outliers.

All (2) torsion outliers are listed below:

Mol	Chain	Res	Type	Atoms
2	A	545	NAG	C4-C5-C6-O6
2	A	545	NAG	O5-C5-C6-O6

There are no ring outliers.

No monomer is involved in short contacts.

## 5.7 Other polymers [i](#)

There are no such residues in this entry.

## 5.8 Polymer linkage issues [i](#)

There are no chain breaks in this entry.

## 6 Fit of model and data [i](#)

### 6.1 Protein, DNA and RNA chains [i](#)

In the following table, the column labelled ‘#RSRZ> 2’ contains the number (and percentage) of RSRZ outliers, followed by percent RSRZ outliers for the chain as percentile scores relative to all X-ray entries and entries of similar resolution. The OWAB column contains the minimum, median, 95<sup>th</sup> percentile and maximum values of the occupancy-weighted average B-factor per residue. The column labelled ‘Q< 0.9’ lists the number of (and percentage) of residues with an average occupancy less than 0.9.

Mol	Chain	Analysed	<RSRZ>	#RSRZ>2	OWAB(Å <sup>2</sup> )	Q<0.9
1	A	528/543 (97%)	-0.36	7 (1%) 77 75	24, 34, 45, 61	0

All (7) RSRZ outliers are listed below:

Mol	Chain	Res	Type	RSRZ
1	A	535	THR	4.0
1	A	485	PRO	3.9
1	A	55	SER	2.8
1	A	24	SER	2.5
1	A	382	ASN	2.4
1	A	454	LYS	2.2
1	A	264	HIS	2.2

### 6.2 Non-standard residues in protein, DNA, RNA chains [i](#)

There are no non-standard protein/DNA/RNA residues in this entry.

### 6.3 Carbohydrates [i](#)

There are no monosaccharides in this entry.

### 6.4 Ligands [i](#)

LIGAND-RSR INFOmissingINFO

### 6.5 Other polymers [i](#)

There are no such residues in this entry.