



wwPDB X-ray Structure Validation Summary Report ⓘ

Sep 3, 2023 – 03:37 PM EDT

PDB ID : 3SP8
Title : Crystal structure of NK2 in complex with fractionated Heparin DP10
Authors : Recacha, R.; Mulloy, B.; Gherardi, E.
Deposited on : 2011-07-01
Resolution : 1.86 Å(reported)

This is a wwPDB X-ray Structure Validation Summary Report for a publicly released PDB entry.

We welcome your comments at validation@mail.wwpdb.org

A user guide is available at

<https://www.wwpdb.org/validation/2017/XrayValidationReportHelp>

with specific help available everywhere you see the ⓘ symbol.

The types of validation reports are described at

<http://www.wwpdb.org/validation/2017/FAQs#types>.

The following versions of software and data (see [references ⓘ](#)) were used in the production of this report:

MolProbity : 4.02b-467
Mogul : 1.8.5 (274361), CSD as541be (2020)
Xtriage (Phenix) : 1.13
EDS : 2.35
Percentile statistics : 20191225.v01 (using entries in the PDB archive December 25th 2019)
Refmac : 5.8.0158
CCP4 : 7.0.044 (Gargrove)
Ideal geometry (proteins) : Engh & Huber (2001)
Ideal geometry (DNA, RNA) : Parkinson et al. (1996)
Validation Pipeline (wwPDB-VP) : 2.35

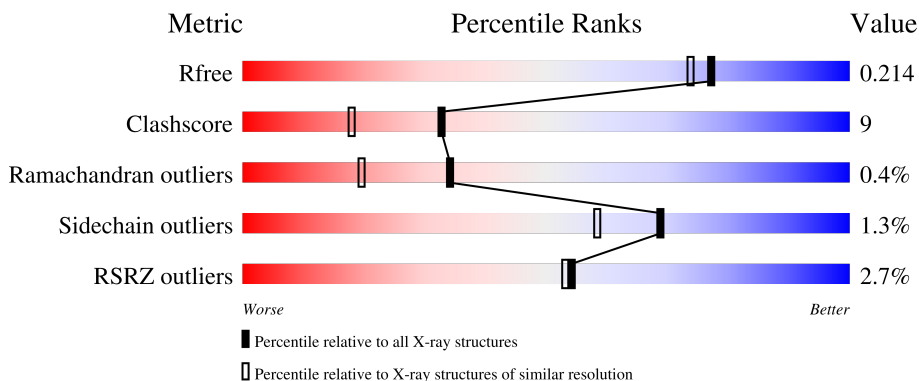
1 Overall quality at a glance

The following experimental techniques were used to determine the structure:

X-RAY DIFFRACTION

The reported resolution of this entry is 1.86 Å.

Percentile scores (ranging between 0-100) for global validation metrics of the entry are shown in the following graphic. The table shows the number of entries on which the scores are based.



Metric	Whole archive (#Entries)	Similar resolution (#Entries, resolution range(Å))
R_{free}	130704	2469 (1.86-1.86)
Clashscore	141614	2625 (1.86-1.86)
Ramachandran outliers	138981	2592 (1.86-1.86)
Sidechain outliers	138945	2592 (1.86-1.86)
RSRZ outliers	127900	2436 (1.86-1.86)

The table below summarises the geometric issues observed across the polymeric chains and their fit to the electron density. The red, orange, yellow and green segments of the lower bar indicate the fraction of residues that contain outliers for ≥ 3 , 2, 1 and 0 types of geometric quality criteria respectively. A grey segment represents the fraction of residues that are not modelled. The numeric value for each fraction is indicated below the corresponding segment, with a dot representing fractions $\leq 5\%$. The upper red bar (where present) indicates the fraction of residues that have poor fit to the electron density. The numeric value is given above the bar.

Mol	Chain	Length	Quality of chain
1	A	264	 2% 80% 16% ..
1	B	264	 3% 83% 13% ..

2 Entry composition [i](#)

There are 6 unique types of molecules in this entry. The entry contains 4837 atoms, of which 0 are hydrogens and 0 are deuteriums.

In the tables below, the ZeroOcc column contains the number of atoms modelled with zero occupancy, the AltConf column contains the number of residues with at least one atom in alternate conformation and the Trace column contains the number of residues modelled with at most 2 atoms.

- Molecule 1 is a protein called Hepatocyte growth factor alpha chain.

Mol	Chain	Residues	Atoms					ZeroOcc	AltConf	Trace
			Total	C	N	O	S			
1	A	255	2184	1373	395	395	21	4	16	0
1	B	256	2156	1354	388	393	21	0	11	0

There are 12 discrepancies between the modelled and reference sequences:

Chain	Residue	Modelled	Actual	Comment	Reference
A	26	GLY	-	expression tag	UNP P14210
A	27	SER	-	expression tag	UNP P14210
A	146	ASP	GLY	engineered mutation	UNP P14210
A	214	SER	CYS	engineered mutation	UNP P14210
A	284	LYS	ALA	conflict	UNP P14210
A	289	LYS	-	expression tag	UNP P14210
B	26	GLY	-	expression tag	UNP P14210
B	27	SER	-	expression tag	UNP P14210
B	146	ASP	GLY	engineered mutation	UNP P14210
B	214	SER	CYS	engineered mutation	UNP P14210
B	284	LYS	ALA	conflict	UNP P14210
B	289	LYS	-	expression tag	UNP P14210

- Molecule 2 is (4R)-2-METHYLPENTANE-2,4-DIOL (three-letter code: MRD) (formula: C₆H₁₄O₂).



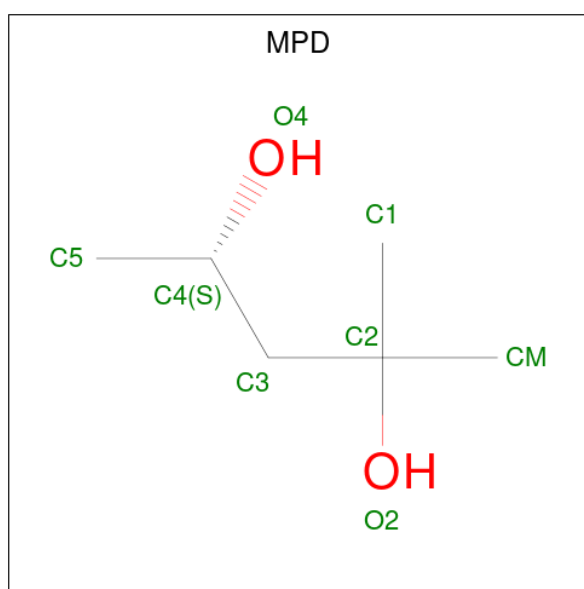
Mol	Chain	Residues	Atoms			ZeroOcc	AltConf
2	A	1	Total	C	O	0	0
			8	6	2		
2	A	1	Total	C	O	0	0
			8	6	2		
2	A	1	Total	C	O	0	0
			8	6	2		
2	B	1	Total	C	O	0	0
			8	6	2		

- Molecule 3 is 2-(N-MORPHOLINO)-ETHANESULFONIC ACID (three-letter code: MES) (formula: C₆H₁₃NO₄S).



Mol	Chain	Residues	Atoms					ZeroOcc	AltConf
			Total	C	N	O	S		
3	A	1	Total 12	C 6	N 1	O 4	S 1	0	0
3	A	1	Total 12	C 6	N 1	O 4	S 1	0	0
3	B	1	Total 12	C 6	N 1	O 4	S 1	0	0
3	B	1	Total 12	C 6	N 1	O 4	S 1	0	0

- Molecule 4 is (4S)-2-METHYL-2,4-PENTANEDIOL (three-letter code: MPD) (formula: C₆H₁₄O₂).



Mol	Chain	Residues	Atoms			ZeroOcc	AltConf
			Total	C	O		
4	A	1	Total 8	C 6	O 2	0	0

- Molecule 5 is SULFATE ION (three-letter code: SO₄) (formula: O₄S).



Mol	Chain	Residues	Atoms	ZeroOcc	AltConf
5	A	1	Total O S 5 4 1	0	0
5	A	1	Total O S 5 4 1	0	0
5	A	1	Total O S 5 4 1	0	0
5	A	1	Total O S 5 4 1	0	0
5	A	1	Total O S 5 4 1	0	0
5	A	1	Total O S 5 4 1	0	0
5	B	1	Total O S 5 4 1	0	0
5	B	1	Total O S 5 4 1	0	0
5	B	1	Total O S 5 4 1	0	0
5	B	1	Total O S 5 4 1	0	0

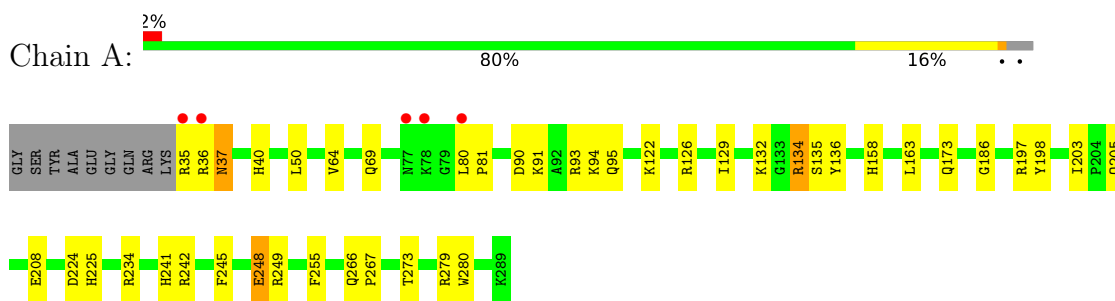
- Molecule 6 is water.

Mol	Chain	Residues	Atoms	ZeroOcc	AltConf
6	A	189	Total O 189 189	0	0
6	B	170	Total O 170 170	0	0

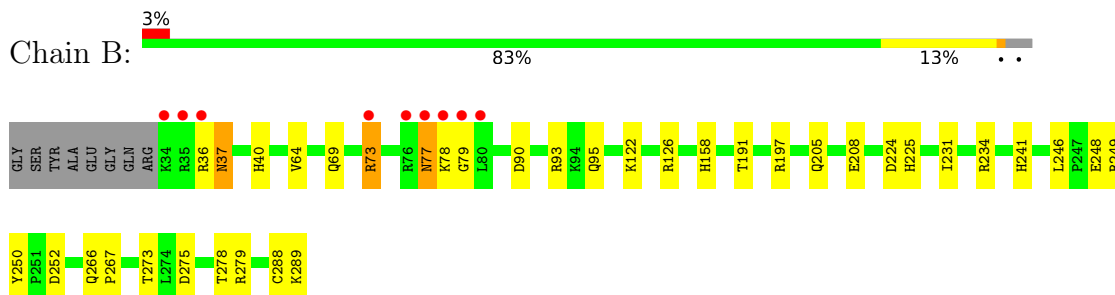
3 Residue-property plots [i](#)

These plots are drawn for all protein, RNA, DNA and oligosaccharide chains in the entry. The first graphic for a chain summarises the proportions of the various outlier classes displayed in the second graphic. The second graphic shows the sequence view annotated by issues in geometry and electron density. Residues are color-coded according to the number of geometric quality criteria for which they contain at least one outlier: green = 0, yellow = 1, orange = 2 and red = 3 or more. A red dot above a residue indicates a poor fit to the electron density ($RSRZ > 2$). Stretches of 2 or more consecutive residues without any outlier are shown as a green connector. Residues present in the sample, but not in the model, are shown in grey.

- Molecule 1: Hepatocyte growth factor alpha chain



- Molecule 1: Hepatocyte growth factor alpha chain



4 Data and refinement statistics i

Property	Value	Source
Space group	P 61	Depositor
Cell constants a, b, c, α , β , γ	75.98Å 75.98Å 199.62Å 90.00° 90.00° 120.00°	Depositor
Resolution (Å)	65.80 – 1.86 65.80 – 1.86	Depositor EDS
% Data completeness (in resolution range)	99.8 (65.80-1.86) 99.7 (65.80-1.86)	Depositor EDS
R_{merge}	(Not available)	Depositor
R_{sym}	(Not available)	Depositor
$\langle I/\sigma(I) \rangle$ ¹	1.92 (at 1.86Å)	Xtrriage
Refinement program	PHENIX (phenix.refine: 1.7.1_743)	Depositor
R, R_{free}	0.187 , 0.217 0.185 , 0.214	Depositor DCC
R_{free} test set	2764 reflections (5.08%)	wwPDB-VP
Wilson B-factor (Å ²)	35.1	Xtrriage
Anisotropy	0.058	Xtrriage
Bulk solvent k_{sol} (e/Å ³), B_{sol} (Å ²)	0.32 , 46.4	EDS
L-test for twinning ²	$\langle L \rangle = 0.50$, $\langle L^2 \rangle = 0.33$	Xtrriage
Estimated twinning fraction	0.477 for h,-h-k,-l	Xtrriage
F_o, F_c correlation	0.97	EDS
Total number of atoms	4837	wwPDB-VP
Average B, all atoms (Å ²)	41.0	wwPDB-VP

Xtrriage's analysis on translational NCS is as follows: *The largest off-origin peak in the Patterson function is 4.17% of the height of the origin peak. No significant pseudotranslation is detected.*

¹Intensities estimated from amplitudes.

²Theoretical values of $\langle |L| \rangle$, $\langle L^2 \rangle$ for acentric reflections are 0.5, 0.333 respectively for untwinned datasets, and 0.375, 0.2 for perfectly twinned datasets.

5 Model quality [i](#)

5.1 Standard geometry [i](#)

Bond lengths and bond angles in the following residue types are not validated in this section: MRD, SO4, MES, MPD

The Z score for a bond length (or angle) is the number of standard deviations the observed value is removed from the expected value. A bond length (or angle) with $|Z| > 5$ is considered an outlier worth inspection. RMSZ is the root-mean-square of all Z scores of the bond lengths (or angles).

Mol	Chain	Bond lengths		Bond angles	
		RMSZ	# Z >5	RMSZ	# Z >5
1	A	0.26	0/2285	0.44	0/3076
1	B	0.26	0/2242	0.45	0/3021
All	All	0.26	0/4527	0.44	0/6097

Chiral center outliers are detected by calculating the chiral volume of a chiral center and verifying if the center is modelled as a planar moiety or with the opposite hand. A planarity outlier is detected by checking planarity of atoms in a peptide group, atoms in a mainchain group or atoms of a sidechain that are expected to be planar.

Mol	Chain	#Chirality outliers	#Planarity outliers
1	B	0	1

There are no bond length outliers.

There are no bond angle outliers.

There are no chirality outliers.

All (1) planarity outliers are listed below:

Mol	Chain	Res	Type	Group
1	B	77	ASN	Peptide

5.2 Too-close contacts [i](#)

In the following table, the Non-H and H(model) columns list the number of non-hydrogen atoms and hydrogen atoms in the chain respectively. The H(added) column lists the number of hydrogen atoms added and optimized by MolProbity. The Clashes column lists the number of clashes within the asymmetric unit, whereas Symm-Clashes lists symmetry-related clashes.

Mol	Chain	Non-H	H(model)	H(added)	Clashes	Symm-Clashes
1	A	2184	0	2121	35	0
1	B	2156	0	2068	33	0
2	A	24	0	42	4	0
2	B	8	0	14	0	0
3	A	24	0	25	3	0
3	B	24	0	24	3	0
4	A	8	0	14	1	0
5	A	30	0	0	2	0
5	B	20	0	0	2	0
6	A	189	0	0	7	0
6	B	170	0	0	7	0
All	All	4837	0	4308	76	0

The all-atom clashscore is defined as the number of clashes found per 1000 atoms (including hydrogen atoms). The all-atom clashscore for this structure is 9.

The worst 5 of 76 close contacts within the same asymmetric unit are listed below, sorted by their clash magnitude.

Atom-1	Atom-2	Interatomic distance (Å)	Clash overlap (Å)
1:B:273:THR:HG22	1:B:275:ASP:H	1.23	1.03
1:A:129:ILE:HG23	1:A:203[B]:ILE:HD13	1.43	0.98
1:B:252[A]:ASP:OD1	6:B:292:HOH:O	1.88	0.90
1:A:40[B]:HIS:NE2	6:A:379:HOH:O	2.16	0.73
1:A:242:ARG:HH11	1:A:242:ARG:HG2	1.54	0.73

There are no symmetry-related clashes.

5.3 Torsion angles [i](#)

5.3.1 Protein backbone [i](#)

In the following table, the Percentiles column shows the percent Ramachandran outliers of the chain as a percentile score with respect to all X-ray entries followed by that with respect to entries of similar resolution.

The Analysed column shows the number of residues for which the backbone conformation was analysed, and the total number of residues.

Mol	Chain	Analysed	Favoured	Allowed	Outliers	Percentiles
1	A	269/264 (102%)	258 (96%)	10 (4%)	1 (0%)	34 19
1	B	265/264 (100%)	256 (97%)	8 (3%)	1 (0%)	34 19

Continued on next page...

Continued from previous page...

Mol	Chain	Analysed	Favoured	Allowed	Outliers	Percentiles
All	All	534/528 (101%)	514 (96%)	18 (3%)	2 (0%)	34 19

All (2) Ramachandran outliers are listed below:

Mol	Chain	Res	Type
1	A	37	ASN
1	B	37	ASN

5.3.2 Protein sidechains [i](#)

In the following table, the Percentiles column shows the percent sidechain outliers of the chain as a percentile score with respect to all X-ray entries followed by that with respect to entries of similar resolution.

The Analysed column shows the number of residues for which the sidechain conformation was analysed, and the total number of residues.

Mol	Chain	Analysed	Rotameric	Outliers	Percentiles
1	A	248/240 (103%)	244 (98%)	4 (2%)	62 49
1	B	243/240 (101%)	241 (99%)	2 (1%)	81 76
All	All	491/480 (102%)	485 (99%)	6 (1%)	69 62

5 of 6 residues with a non-rotameric sidechain are listed below:

Mol	Chain	Res	Type
1	A	273	THR
1	B	73	ARG
1	B	191	THR
1	A	134	ARG
1	A	35	ARG

Sometimes sidechains can be flipped to improve hydrogen bonding and reduce clashes. All (2) such sidechains are listed below:

Mol	Chain	Res	Type
1	A	37	ASN
1	B	77	ASN

5.3.3 RNA [i](#)

There are no RNA molecules in this entry.

5.4 Non-standard residues in protein, DNA, RNA chains [i](#)

There are no non-standard protein/DNA/RNA residues in this entry.

5.5 Carbohydrates [i](#)

There are no monosaccharides in this entry.

5.6 Ligand geometry [i](#)

19 ligands are modelled in this entry.

In the following table, the Counts columns list the number of bonds (or angles) for which Mogul statistics could be retrieved, the number of bonds (or angles) that are observed in the model and the number of bonds (or angles) that are defined in the Chemical Component Dictionary. The Link column lists molecule types, if any, to which the group is linked. The Z score for a bond length (or angle) is the number of standard deviations the observed value is removed from the expected value. A bond length (or angle) with $|Z| > 2$ is considered an outlier worth inspection. RMSZ is the root-mean-square of all Z scores of the bond lengths (or angles).

Mol	Type	Chain	Res	Link	Bond lengths			Bond angles		
					Counts	RMSZ	$\# Z > 2$	Counts	RMSZ	$\# Z > 2$
5	SO4	B	7	-	4,4,4	0.14	0	6,6,6	0.06	0
5	SO4	A	5	-	4,4,4	0.13	0	6,6,6	0.07	0
5	SO4	A	1	-	4,4,4	0.14	0	6,6,6	0.06	0
5	SO4	B	9	-	4,4,4	0.14	0	6,6,6	0.04	0
2	MRD	A	290	-	7,7,7	0.29	0	9,10,10	0.25	0
2	MRD	B	1209	-	7,7,7	0.29	0	9,10,10	0.16	0
4	MPD	A	1209	-	7,7,7	0.29	0	9,10,10	0.37	0
3	MES	A	1202	-	12,12,12	2.21	1 (8%)	14,16,16	1.72	3 (21%)
3	MES	B	1202	-	12,12,12	2.16	1 (8%)	14,16,16	1.76	5 (35%)
5	SO4	A	4	-	4,4,4	0.13	0	6,6,6	0.06	0
5	SO4	B	10	-	4,4,4	0.15	0	6,6,6	0.09	0
3	MES	A	1201	-	12,12,12	2.04	1 (8%)	14,16,16	1.94	3 (21%)
3	MES	B	1201	-	12,12,12	1.96	1 (8%)	14,16,16	1.80	4 (28%)
5	SO4	A	2	-	4,4,4	0.14	0	6,6,6	0.06	0
5	SO4	B	8	-	4,4,4	0.14	0	6,6,6	0.04	0
5	SO4	A	3	-	4,4,4	0.14	0	6,6,6	0.06	0
2	MRD	A	1207	-	7,7,7	0.26	0	9,10,10	0.17	0

Mol	Type	Chain	Res	Link	Bond lengths			Bond angles		
					Counts	RMSZ	# Z > 2	Counts	RMSZ	# Z > 2
2	MRD	A	1203	-	7,7,7	0.29	0	9,10,10	0.20	0
5	SO4	A	6	-	4,4,4	0.14	0	6,6,6	0.05	0

In the following table, the Chirals column lists the number of chiral outliers, the number of chiral centers analysed, the number of these observed in the model and the number defined in the Chemical Component Dictionary. Similar counts are reported in the Torsion and Rings columns. '-' means no outliers of that kind were identified.

Mol	Type	Chain	Res	Link	Chirals	Torsions	Rings
2	MRD	A	290	-	-	2/5/5/5	-
2	MRD	B	1209	-	-	0/5/5/5	-
4	MPD	A	1209	-	-	3/5/5/5	-
3	MES	A	1202	-	-	1/6/14/14	0/1/1/1
3	MES	B	1202	-	-	2/6/14/14	0/1/1/1
3	MES	A	1201	-	-	0/6/14/14	0/1/1/1
3	MES	B	1201	-	-	1/6/14/14	0/1/1/1
2	MRD	A	1207	-	-	2/5/5/5	-
2	MRD	A	1203	-	-	3/5/5/5	-

All (4) bond length outliers are listed below:

Mol	Chain	Res	Type	Atoms	Z	Observed(Å)	Ideal(Å)
3	A	1202	MES	C8-S	-7.35	1.67	1.77
3	B	1202	MES	C8-S	-7.15	1.67	1.77
3	A	1201	MES	C8-S	-6.79	1.67	1.77
3	B	1201	MES	C8-S	-6.48	1.68	1.77

The worst 5 of 15 bond angle outliers are listed below:

Mol	Chain	Res	Type	Atoms	Z	Observed(°)	Ideal(°)
3	A	1201	MES	C5-N4-C3	4.56	119.09	108.83
3	B	1202	MES	C5-N4-C3	3.80	117.39	108.83
3	B	1201	MES	O3S-S-C8	3.68	111.71	105.77
3	A	1201	MES	O1S-S-C8	3.65	111.31	106.92
3	A	1202	MES	C5-N4-C3	3.50	116.70	108.83

There are no chirality outliers.

5 of 14 torsion outliers are listed below:

Mol	Chain	Res	Type	Atoms
2	A	1207	MRD	C2-C3-C4-O4
3	B	1202	MES	N4-C7-C8-S
3	B	1201	MES	C8-C7-N4-C3
3	A	1202	MES	N4-C7-C8-S
2	A	1203	MRD	C2-C3-C4-C5

There are no ring outliers.

10 monomers are involved in 15 short contacts:

Mol	Chain	Res	Type	Clashes	Symm-Clashes
5	B	7	SO4	1	0
5	A	5	SO4	1	0
5	B	9	SO4	1	0
4	A	1209	MPD	1	0
3	A	1202	MES	2	0
3	B	1202	MES	3	0
3	A	1201	MES	1	0
2	A	1207	MRD	2	0
2	A	1203	MRD	2	0
5	A	6	SO4	1	0

5.7 Other polymers [i](#)

There are no such residues in this entry.

5.8 Polymer linkage issues [i](#)

There are no chain breaks in this entry.

6 Fit of model and data [i](#)

6.1 Protein, DNA and RNA chains [i](#)

In the following table, the column labelled ‘#RSRZ> 2’ contains the number (and percentage) of RSRZ outliers, followed by percent RSRZ outliers for the chain as percentile scores relative to all X-ray entries and entries of similar resolution. The OWAB column contains the minimum, median, 95th percentile and maximum values of the occupancy-weighted average B-factor per residue. The column labelled ‘Q< 0.9’ lists the number of (and percentage) of residues with an average occupancy less than 0.9.

Mol	Chain	Analysed	<RSRZ>	#RSRZ>2	OWAB(Å ²)	Q<0.9
1	A	255/264 (96%)	-0.47	5 (1%) 65 64	25, 37, 64, 93	5 (1%)
1	B	256/264 (96%)	-0.38	9 (3%) 44 41	26, 37, 66, 98	3 (1%)
All	All	511/528 (96%)	-0.42	14 (2%) 54 53	25, 37, 65, 98	8 (1%)

The worst 5 of 14 RSRZ outliers are listed below:

Mol	Chain	Res	Type	RSRZ
1	B	35	ARG	8.1
1	A	78	LYS	6.7
1	A	35	ARG	6.6
1	B	34	LYS	6.2
1	B	78	LYS	6.0

6.2 Non-standard residues in protein, DNA, RNA chains [i](#)

There are no non-standard protein/DNA/RNA residues in this entry.

6.3 Carbohydrates [i](#)

There are no monosaccharides in this entry.

6.4 Ligands [i](#)

In the following table, the Atoms column lists the number of modelled atoms in the group and the number defined in the chemical component dictionary. The B-factors column lists the minimum, median, 95th percentile and maximum values of B factors of atoms in the group. The column labelled ‘Q< 0.9’ lists the number of atoms with occupancy less than 0.9.

Mol	Type	Chain	Res	Atoms	RSCC	RSR	B-factors(\AA^2)	Q<0.9
5	SO4	A	2	5/5	0.82	0.30	128,131,132,133	0
5	SO4	A	4	5/5	0.82	0.12	129,130,131,131	0
5	SO4	A	5	5/5	0.84	0.12	111,112,113,114	0
5	SO4	B	8	5/5	0.86	0.32	108,111,112,115	0
5	SO4	B	9	5/5	0.86	0.43	74,74,75,78	5
5	SO4	B	7	5/5	0.87	0.49	60,64,65,65	5
2	MRD	A	1203	8/8	0.90	0.11	55,62,65,69	0
5	SO4	A	6	5/5	0.91	0.12	91,92,92,93	5
5	SO4	A	1	5/5	0.91	0.33	58,59,60,63	5
5	SO4	A	3	5/5	0.92	0.14	86,87,89,90	5
3	MES	A	1202	12/12	0.94	0.08	38,48,62,64	0
3	MES	B	1202	12/12	0.94	0.07	38,45,57,61	0
4	MPD	A	1209	8/8	0.94	0.13	57,69,73,75	0
2	MRD	A	290	8/8	0.94	0.13	58,66,76,76	0
2	MRD	A	1207	8/8	0.95	0.12	63,65,68,71	0
2	MRD	B	1209	8/8	0.95	0.08	43,50,54,56	0
5	SO4	B	10	5/5	0.96	0.11	76,77,84,84	5
3	MES	B	1201	12/12	0.99	0.10	31,32,36,42	0
3	MES	A	1201	12/12	0.99	0.10	29,32,38,39	0

6.5 Other polymers [i](#)

There are no such residues in this entry.