



Full wwPDB X-ray Structure Validation Report ⓘ

May 15, 2020 – 12:03 am BST

PDB ID : 1SUP
Title : SUBTILISIN BPN' AT 1.6 ANGSTROMS RESOLUTION: ANALYSIS OF DISCRETE DISORDER AND COMPARISON OF CRYSTAL FORMS
Authors : Gallagher, D.T.; Oliver, J.D.; Betzel, C.; Gilliland, G.L.
Deposited on : 1995-08-14
Resolution : 1.60 Å(reported)

This is a Full wwPDB X-ray Structure Validation Report for a publicly released PDB entry.

We welcome your comments at validation@mail.wwpdb.org

A user guide is available at

<https://www.wwpdb.org/validation/2017/XrayValidationReportHelp>

with specific help available everywhere you see the ⓘ symbol.

The following versions of software and data (see [references ⓘ](#)) were used in the production of this report:

MolProbity : 4.02b-467
Mogul : 1.8.5 (274361), CSD as541be (2020)
Xtrriage (Phenix) : **NOT EXECUTED**
EDS : **NOT EXECUTED**
Percentile statistics : 20191225.v01 (using entries in the PDB archive December 25th 2019)
Ideal geometry (proteins) : Engh & Huber (2001)
Ideal geometry (DNA, RNA) : Parkinson et al. (1996)
Validation Pipeline (wwPDB-VP) : 2.11

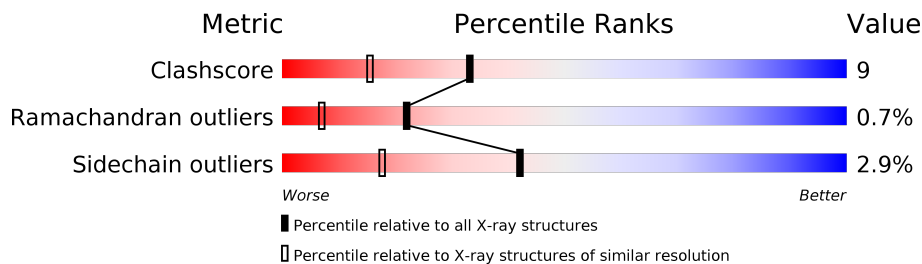
1 Overall quality at a glance

The following experimental techniques were used to determine the structure:

X-RAY DIFFRACTION

The reported resolution of this entry is 1.60 Å.

Percentile scores (ranging between 0-100) for global validation metrics of the entry are shown in the following graphic. The table shows the number of entries on which the scores are based.



Metric	Whole archive (#Entries)	Similar resolution (#Entries, resolution range(Å))
Clashscore	141614	3665 (1.60-1.60)
Ramachandran outliers	138981	3564 (1.60-1.60)
Sidechain outliers	138945	3563 (1.60-1.60)

The table below summarises the geometric issues observed across the polymeric chains and their fit to the electron density. The red, orange, yellow and green segments on the lower bar indicate the fraction of residues that contain outliers for ≥ 3 , 2, 1 and 0 types of geometric quality criteria respectively. A grey segment represents the fraction of residues that are not modelled. The numeric value for each fraction is indicated below the corresponding segment, with a dot representing fractions $\leq 5\%$.

Note EDS was not executed.

Mol	Chain	Length	Quality of chain
1	A	275	80% 17% ..

The following table lists non-polymeric compounds, carbohydrate monomers and non-standard residues in protein, DNA, RNA chains that are outliers for geometric or electron-density-fit criteria:

Mol	Type	Chain	Res	Chirality	Geometry	Clashes	Electron density
4	PMS	A	278	-	X	-	-

2 Entry composition [i](#)

There are 5 unique types of molecules in this entry. The entry contains 2224 atoms, of which 0 are hydrogens and 0 are deuteriums.

In the tables below, the ZeroOcc column contains the number of atoms modelled with zero occupancy, the AltConf column contains the number of residues with at least one atom in alternate conformation and the Trace column contains the number of residues modelled with at most 2 atoms.

- Molecule 1 is a protein called SUBTILISIN BPN'.

Mol	Chain	Residues	Atoms					ZeroOcc	AltConf	Trace
			Total	C	N	O	S			
1	A	275	2018	1249	347	416	6	0	22	0

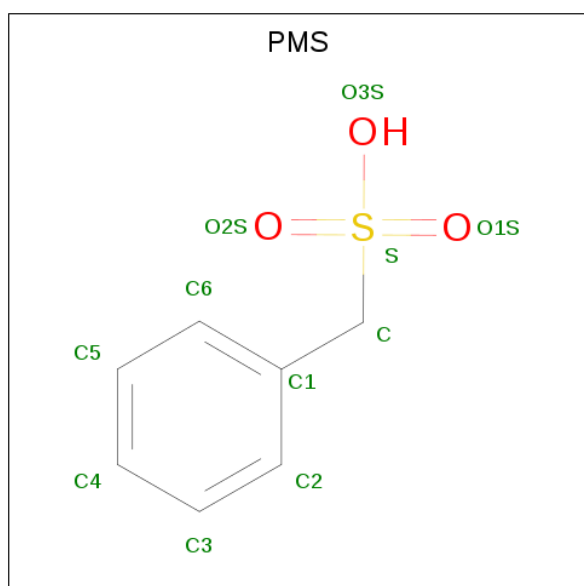
- Molecule 2 is CALCIUM ION (three-letter code: CA) (formula: Ca).

Mol	Chain	Residues	Atoms		ZeroOcc	AltConf
2	A	1	Total	Ca	0	0
			1	1		

- Molecule 3 is SODIUM ION (three-letter code: NA) (formula: Na).

Mol	Chain	Residues	Atoms		ZeroOcc	AltConf
3	A	1	Total	Na	0	0
			1	1		

- Molecule 4 is phenylmethanesulfonic acid (three-letter code: PMS) (formula: C₇H₈O₃S).



Mol	Chain	Residues	Atoms				ZeroOcc	AltConf
4	A	1	Total	C	O	S	0	0
			10	7	2	1		

- Molecule 5 is water.

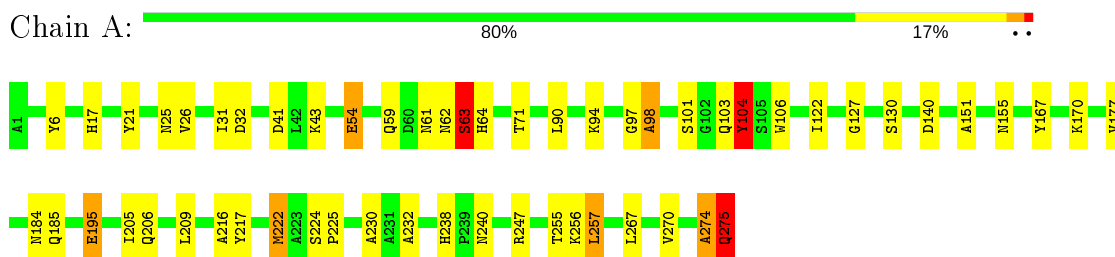
Mol	Chain	Residues	Atoms		ZeroOcc	AltConf
5	A	194	Total	O	0	0
			194	194		

3 Residue-property plots [i](#)

These plots are drawn for all protein, RNA and DNA chains in the entry. The first graphic for a chain summarises the proportions of the various outlier classes displayed in the second graphic. The second graphic shows the sequence view annotated by issues in geometry. Residues are color-coded according to the number of geometric quality criteria for which they contain at least one outlier: green = 0, yellow = 1, orange = 2 and red = 3 or more. Stretches of 2 or more consecutive residues without any outlier are shown as a green connector. Residues present in the sample, but not in the model, are shown in grey.

Note EDS was not executed.

- Molecule 1: SUBTILISIN BPN'



4 Data and refinement statistics

Xtrriage (Phenix) and EDS were not executed - this section is therefore incomplete.

Property	Value	Source
Space group	C 1 2 1	Depositor
Cell constants a, b, c, α , β , γ	66.56Å 54.15Å 62.73Å 90.00° 91.87° 90.00°	Depositor
Resolution (Å)	(Not available) – 1.60	Depositor
% Data completeness (in resolution range)	(Not available) ((Not available)-1.60)	Depositor
R_{merge}	(Not available)	Depositor
R_{sym}	(Not available)	Depositor
Refinement program	PROLSQ	Depositor
R, R_{free}	0.168 , (Not available)	Depositor
Estimated twinning fraction	No twinning to report.	Xtrriage
Total number of atoms	2224	wwPDB-VP
Average B, all atoms (Å ²)	13.0	wwPDB-VP

5 Model quality i

5.1 Standard geometry i

Bond lengths and bond angles in the following residue types are not validated in this section: NA, CA, PMS

The Z score for a bond length (or angle) is the number of standard deviations the observed value is removed from the expected value. A bond length (or angle) with $|Z| > 5$ is considered an outlier worth inspection. RMSZ is the root-mean-square of all Z scores of the bond lengths (or angles).

Mol	Chain	Bond lengths		Bond angles	
		RMSZ	# Z >5	RMSZ	# Z >5
1	A	1.06	1/2150 (0.0%)	1.61	25/2931 (0.9%)

Chiral center outliers are detected by calculating the chiral volume of a chiral center and verifying if the center is modelled as a planar moiety or with the opposite hand. A planarity outlier is detected by checking planarity of atoms in a peptide group, atoms in a mainchain group or atoms of a sidechain that are expected to be planar.

Mol	Chain	#Chirality outliers	#Planarity outliers
1	A	0	6

All (1) bond length outliers are listed below:

Mol	Chain	Res	Type	Atoms	Z	Observed(Å)	Ideal(Å)
1	A	195	GLU	CD-OE1	-5.65	1.19	1.25

All (25) bond angle outliers are listed below:

Mol	Chain	Res	Type	Atoms	Z	Observed(°)	Ideal(°)
1	A	247	ARG	NE-CZ-NH2	-10.83	114.89	120.30
1	A	247	ARG	NE-CZ-NH1	10.67	125.64	120.30
1	A	104	TYR	CB-CG-CD1	9.75	126.85	121.00
1	A	41	ASP	CB-CG-OD1	9.01	126.41	118.30
1	A	217	TYR	CB-CG-CD1	8.94	126.36	121.00
1	A	54	GLU	CA-CB-CG	7.86	130.70	113.40
1	A	90	LEU	CA-CB-CG	7.07	131.55	115.30
1	A	104	TYR	CA-CB-CG	6.47	125.69	113.40
1	A	63[A]	SER	N-CA-CB	6.45	120.17	110.50
1	A	63[B]	SER	N-CA-CB	6.45	120.17	110.50
1	A	63[C]	SER	N-CA-CB	6.45	120.17	110.50
1	A	54	GLU	OE1-CD-OE2	-6.44	115.58	123.30

Continued on next page...

Continued from previous page...

Mol	Chain	Res	Type	Atoms	Z	Observed(°)	Ideal(°)
1	A	32	ASP	CB-CG-OD2	-6.40	112.54	118.30
1	A	240	ASN	CB-CA-C	6.19	122.78	110.40
1	A	140	ASP	CB-CG-OD1	6.04	123.73	118.30
1	A	274	ALA	CB-CA-C	5.91	118.96	110.10
1	A	21	TYR	CB-CG-CD2	-5.79	117.53	121.00
1	A	25	ASN	CA-CB-CG	5.74	126.02	113.40
1	A	43	LYS	CA-CB-CG	5.59	125.69	113.40
1	A	6	TYR	CB-CG-CD2	5.42	124.25	121.00
1	A	6	TYR	CB-CG-CD1	-5.33	117.80	121.00
1	A	54	GLU	CB-CG-CD	5.10	127.98	114.20
1	A	217	TYR	CB-CG-CD2	-5.08	117.95	121.00
1	A	275	GLN	CB-CG-CD	5.03	124.67	111.60
1	A	32	ASP	CB-CG-OD1	5.01	122.81	118.30

There are no chirality outliers.

All (6) planarity outliers are listed below:

Mol	Chain	Res	Type	Group
1	A	104	TYR	Mainchain
1	A	17	HIS	Mainchain
1	A	185	GLN	Sidechain
1	A	257[A]	LEU	Mainchain
1	A	62	ASN	Sidechain
1	A	97[B]	GLY	Mainchain

5.2 Too-close contacts [\(i\)](#)

In the following table, the Non-H and H(model) columns list the number of non-hydrogen atoms and hydrogen atoms in the chain respectively. The H(added) column lists the number of hydrogen atoms added and optimized by MolProbity. The Clashes column lists the number of clashes within the asymmetric unit, whereas Symm-Clashes lists symmetry related clashes.

Mol	Chain	Non-H	H(model)	H(added)	Clashes	Symm-Clashes
1	A	2018	0	1990	35	0
2	A	1	0	0	0	0
3	A	1	0	0	0	0
4	A	10	0	5	1	0
5	A	194	0	0	4	0
All	All	2224	0	1995	35	0

The all-atom clashscore is defined as the number of clashes found per 1000 atoms (including

hydrogen atoms). The all-atom clashscore for this structure is 9.

All (35) close contacts within the same asymmetric unit are listed below, sorted by their clash magnitude.

Atom-1	Atom-2	Interatomic distance (Å)	Clash overlap (Å)
1:A:177[B]:VAL:HG21	1:A:224:SER:HA	1.47	0.94
1:A:177[B]:VAL:HG21	1:A:224:SER:CA	2.09	0.83
1:A:155:ASN:HD21	4:A:278:PMS:H2A	1.57	0.70
1:A:103:GLN:HG3	1:A:106:TRP:CE2	2.29	0.67
1:A:230:ALA:HB1	1:A:270[C]:VAL:HG12	1.76	0.67
1:A:61:ASN:HB2	1:A:98[B]:ALA:HB2	1.80	0.63
1:A:71[B]:THR:HG22	5:A:279:HOH:O	1.99	0.62
1:A:151:ALA:O	1:A:177[B]:VAL:HG22	2.00	0.61
1:A:230:ALA:HB1	1:A:270[C]:VAL:CG1	2.31	0.61
1:A:255[B]:THR:HG21	5:A:315:HOH:O	1.98	0.61
1:A:230:ALA:HB1	1:A:270[B]:VAL:HG22	1.88	0.56
1:A:31:ILE:HD12	1:A:122:ILE:HG23	1.90	0.53
1:A:63[C]:SER:OG	1:A:209:LEU:HD22	2.09	0.52
1:A:255[B]:THR:OG1	1:A:267:LEU:HB3	2.09	0.52
1:A:103:GLN:HB2	1:A:106:TRP:CG	2.45	0.52
1:A:54:GLU:OE1	1:A:94[B]:LYS:NZ	2.44	0.50
1:A:54:GLU:OE1	1:A:94[B]:LYS:CE	2.59	0.50
1:A:177[B]:VAL:HG21	1:A:224:SER:CB	2.41	0.50
1:A:127:GLY:HA2	1:A:167:TYR:O	2.13	0.49
1:A:230:ALA:CB	1:A:270[C]:VAL:CG1	2.91	0.48
1:A:230:ALA:CB	1:A:270[C]:VAL:HG11	2.44	0.47
1:A:71[B]:THR:OG1	1:A:225:PRO:HB2	2.15	0.46
1:A:64[B]:HIS:NE2	1:A:222[B]:MET:HE1	2.29	0.46
1:A:170[A]:LYS:NZ	5:A:467:HOH:O	2.47	0.46
1:A:238:HIS:NE2	1:A:275:GLN:O	2.49	0.45
1:A:184:ASN:HB3	1:A:257[B]:LEU:HD22	1.98	0.45
1:A:31:ILE:HD12	1:A:122:ILE:CG2	2.47	0.43
1:A:104:TYR:OH	1:A:130:SER:O	2.32	0.43
1:A:26:VAL:HG11	1:A:232:ALA:HA	2.01	0.42
1:A:170[A]:LYS:HE3	1:A:195:GLU:OE2	2.20	0.41
1:A:61:ASN:HB2	1:A:98[B]:ALA:CB	2.49	0.41
1:A:238:HIS:NE2	1:A:274:ALA:O	2.50	0.41
1:A:205:ILE:O	1:A:216:ALA:HA	2.21	0.40
1:A:184:ASN:HB3	1:A:257[B]:LEU:CD2	2.51	0.40
1:A:64[B]:HIS:ND1	5:A:436:HOH:O	2.36	0.40

There are no symmetry-related clashes.

5.3 Torsion angles [i](#)

5.3.1 Protein backbone [i](#)

In the following table, the Percentiles column shows the percent Ramachandran outliers of the chain as a percentile score with respect to all X-ray entries followed by that with respect to entries of similar resolution.

The Analysed column shows the number of residues for which the backbone conformation was analysed, and the total number of residues.

Mol	Chain	Analysed	Favoured	Allowed	Outliers	Percentiles
1	A	298/275 (108%)	282 (95%)	11 (4%)	5 (2%)	9 1

All (5) Ramachandran outliers are listed below:

Mol	Chain	Res	Type
1	A	63[A]	SER
1	A	63[B]	SER
1	A	63[C]	SER
1	A	98[A]	ALA
1	A	98[B]	ALA

5.3.2 Protein sidechains [i](#)

In the following table, the Percentiles column shows the percent sidechain outliers of the chain as a percentile score with respect to all X-ray entries followed by that with respect to entries of similar resolution.

The Analysed column shows the number of residues for which the sidechain conformation was analysed, and the total number of residues.

Mol	Chain	Analysed	Rotameric	Outliers	Percentiles
1	A	227/205 (111%)	219 (96%)	8 (4%)	36 13

All (8) residues with a non-rotameric sidechain are listed below:

Mol	Chain	Res	Type
1	A	59[A]	GLN
1	A	59[B]	GLN
1	A	101	SER
1	A	206	GLN
1	A	222[A]	MET
1	A	222[B]	MET

Continued on next page...

Continued from previous page...

Mol	Chain	Res	Type
1	A	256	LYS
1	A	275	GLN

Some sidechains can be flipped to improve hydrogen bonding and reduce clashes. All (2) such sidechains are listed below:

Mol	Chain	Res	Type
1	A	206	GLN
1	A	271	GLN

5.3.3 RNA [i](#)

There are no RNA molecules in this entry.

5.4 Non-standard residues in protein, DNA, RNA chains [i](#)

There are no non-standard protein/DNA/RNA residues in this entry.

5.5 Carbohydrates [i](#)

There are no carbohydrates in this entry.

5.6 Ligand geometry [i](#)

Of 3 ligands modelled in this entry, 2 are monoatomic - leaving 1 for Mogul analysis.

In the following table, the Counts columns list the number of bonds (or angles) for which Mogul statistics could be retrieved, the number of bonds (or angles) that are observed in the model and the number of bonds (or angles) that are defined in the Chemical Component Dictionary. The Link column lists molecule types, if any, to which the group is linked. The Z score for a bond length (or angle) is the number of standard deviations the observed value is removed from the expected value. A bond length (or angle) with $|Z| > 2$ is considered an outlier worth inspection. RMSZ is the root-mean-square of all Z scores of the bond lengths (or angles).

Mol	Type	Chain	Res	Link	Bond lengths			Bond angles		
					Counts	RMSZ	$\# Z > 2$	Counts	RMSZ	$\# Z > 2$
4	PMS	A	278	1	7,10,11	1.48	0	11,12,15	4.15	8 (72%)

In the following table, the Chirals column lists the number of chiral outliers, the number of chiral centers analysed, the number of these observed in the model and the number defined in the

Chemical Component Dictionary. Similar counts are reported in the Torsion and Rings columns. '-' means no outliers of that kind were identified.

Mol	Type	Chain	Res	Link	Chirals	Torsions	Rings
4	PMS	A	278	1	-	3/4/4/5	0/1/1/1

There are no bond length outliers.

All (8) bond angle outliers are listed below:

Mol	Chain	Res	Type	Atoms	Z	Observed(°)	Ideal(°)
4	A	278	PMS	C3-C2-C1	7.97	132.86	120.63
4	A	278	PMS	C6-C1-C2	-5.54	109.45	118.17
4	A	278	PMS	C-C1-C6	5.00	126.05	120.57
4	A	278	PMS	O2S-S-C	4.70	113.18	105.56
4	A	278	PMS	C5-C4-C3	-3.69	113.08	119.93
4	A	278	PMS	C1-C-S	3.35	119.34	110.60
4	A	278	PMS	C-C1-C2	3.18	124.06	120.57
4	A	278	PMS	C4-C5-C6	3.01	124.78	120.19

There are no chirality outliers.

All (3) torsion outliers are listed below:

Mol	Chain	Res	Type	Atoms
4	A	278	PMS	C1-C-S-O2S
4	A	278	PMS	S-C-C1-C2
4	A	278	PMS	S-C-C1-C6

There are no ring outliers.

1 monomer is involved in 1 short contact:

Mol	Chain	Res	Type	Clashes	Symm-Clashes
4	A	278	PMS	1	0

5.7 Other polymers [i](#)

There are no such residues in this entry.

5.8 Polymer linkage issues [i](#)

There are no chain breaks in this entry.

6 Fit of model and data

6.1 Protein, DNA and RNA chains

EDS was not executed - this section is therefore empty.

6.2 Non-standard residues in protein, DNA, RNA chains

EDS was not executed - this section is therefore empty.

6.3 Carbohydrates

EDS was not executed - this section is therefore empty.

6.4 Ligands

EDS was not executed - this section is therefore empty.

6.5 Other polymers

EDS was not executed - this section is therefore empty.