



# Full wwPDB X-ray Structure Validation Report ⓘ

Jan 15, 2024 – 11:07 am GMT

PDB ID : 6SU8  
Title : Highly thermostable endoglucanase Cel7B  
Authors : Schiano-di-Cola, C.; Morth, J.P.; Westh, P.; Borch, K.  
Deposited on : 2019-09-13  
Resolution : 2.48 Å(reported)

This is a Full wwPDB X-ray Structure Validation Report for a publicly released PDB entry.

We welcome your comments at [validation@mail.wwpdb.org](mailto:validation@mail.wwpdb.org)

A user guide is available at

<https://www.wwpdb.org/validation/2017/XrayValidationReportHelp>

with specific help available everywhere you see the ⓘ symbol.

The types of validation reports are described at

<http://www.wwpdb.org/validation/2017/FAQs#types>.

---

The following versions of software and data (see [references ⓘ](#)) were used in the production of this report:

MolProbity : 4.02b-467  
Mogul : 1.8.4, CSD as541be (2020)  
Xtriage (Phenix) : 1.13  
EDS : 2.36  
buster-report : 1.1.7 (2018)  
Percentile statistics : 20191225.v01 (using entries in the PDB archive December 25th 2019)  
Refmac : 5.8.0158  
CCP4 : 7.0.044 (Gargrove)  
Ideal geometry (proteins) : Engh & Huber (2001)  
Ideal geometry (DNA, RNA) : Parkinson et al. (1996)  
Validation Pipeline (wwPDB-VP) : 2.36

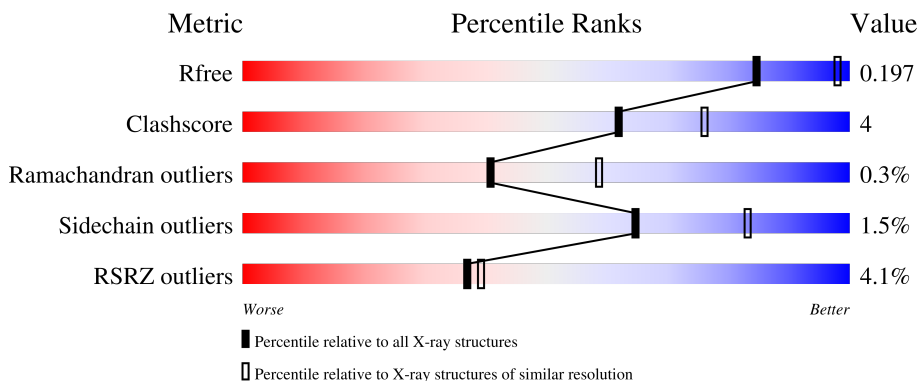
# 1 Overall quality at a glance i

The following experimental techniques were used to determine the structure:

*X-RAY DIFFRACTION*

The reported resolution of this entry is 2.48 Å.

Percentile scores (ranging between 0-100) for global validation metrics of the entry are shown in the following graphic. The table shows the number of entries on which the scores are based.






Metric	Whole archive (#Entries)	Similar resolution (#Entries, resolution range(Å))
$R_{free}$	130704	5857 (2.50-2.46)
Clashscore	141614	6594 (2.50-2.46)
Ramachandran outliers	138981	6469 (2.50-2.46)
Sidechain outliers	138945	6471 (2.50-2.46)
RSRZ outliers	127900	5738 (2.50-2.46)

The table below summarises the geometric issues observed across the polymeric chains and their fit to the electron density. The red, orange, yellow and green segments of the lower bar indicate the fraction of residues that contain outliers for  $\geq 3$ , 2, 1 and 0 types of geometric quality criteria respectively. A grey segment represents the fraction of residues that are not modelled. The numeric value for each fraction is indicated below the corresponding segment, with a dot representing fractions  $\leq 5\%$ . The upper red bar (where present) indicates the fraction of residues that have poor fit to the electron density. The numeric value is given above the bar.

Mol	Chain	Length	Quality of chain
1	A	397	<div style="display: flex; align-items: center;"> <div style="width: 3%; height: 10px; background-color: red; margin-right: 5px;"></div> <div style="width: 90%; height: 10px; background-color: green; margin-right: 5px;"></div> <div style="width: 10%; height: 10px; background-color: yellow; margin-right: 5px;"></div> </div> <p style="margin-left: 10px;">3%      90%      10%</p>
1	B	397	<div style="display: flex; align-items: center;"> <div style="width: 4%; height: 10px; background-color: red; margin-right: 5px;"></div> <div style="width: 87%; height: 10px; background-color: green; margin-right: 5px;"></div> <div style="width: 12%; height: 10px; background-color: yellow; margin-right: 5px;"></div> <div style="width: 1%; height: 10px; background-color: orange; margin-right: 5px;"></div> </div> <p style="margin-left: 10px;">4%      87%      12%      ..</p>
1	C	397	<div style="display: flex; align-items: center;"> <div style="width: 6%; height: 10px; background-color: red; margin-right: 5px;"></div> <div style="width: 88%; height: 10px; background-color: green; margin-right: 5px;"></div> <div style="width: 11%; height: 10px; background-color: yellow; margin-right: 5px;"></div> <div style="width: 1%; height: 10px; background-color: orange; margin-right: 5px;"></div> </div> <p style="margin-left: 10px;">6%      88%      11%      .</p>
2	D	3	<div style="display: flex; align-items: center;"> <div style="width: 67%; height: 10px; background-color: green; margin-right: 5px;"></div> <div style="width: 33%; height: 10px; background-color: yellow; margin-right: 5px;"></div> </div> <p style="margin-left: 10px;">67%      33%</p>
3	E	2	<div style="display: flex; align-items: center;"> <div style="width: 100%; height: 10px; background-color: green; margin-right: 5px;"></div> </div> <p style="margin-left: 10px;">100%</p>

Continued on next page...

*Continued from previous page...*

Mol	Chain	Length	Quality of chain
3	F	2	 50% 50%
3	G	2	 50% 50%
3	H	2	 50% 50%

The following table lists non-polymeric compounds, carbohydrate monomers and non-standard residues in protein, DNA, RNA chains that are outliers for geometric or electron-density-fit criteria:

Mol	Type	Chain	Res	Chirality	Geometry	Clashes	Electron density
2	BMA	D	3	-	-	-	X
4	NAG	A	505	-	-	-	X
4	NAG	A	506	-	-	-	X
4	NAG	A	507	-	-	-	X
4	NAG	B	506	-	-	-	X
4	NAG	C	506	-	-	-	X

## 2 Entry composition [i](#)

There are 7 unique types of molecules in this entry. The entry contains 9354 atoms, of which 0 are hydrogens and 0 are deuteriums.

In the tables below, the ZeroOcc column contains the number of atoms modelled with zero occupancy, the AltConf column contains the number of residues with at least one atom in alternate conformation and the Trace column contains the number of residues modelled with at most 2 atoms.

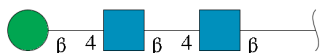
- Molecule 1 is a protein called Glucanase.

Mol	Chain	Residues	Atoms					ZeroOcc	AltConf	Trace
			Total	C	N	O	S			
1	A	396	2925	1800	487	613	25	0	0	0
1	B	396	2925	1800	487	613	25	0	0	0
1	C	396	2925	1800	487	613	25	0	0	0

There are 3 discrepancies between the modelled and reference sequences:

Chain	Residue	Modelled	Actual	Comment	Reference
A	1	PCA	GLN	engineered mutation	UNP W8P1L2
B	1	PCA	GLN	engineered mutation	UNP W8P1L2
C	1	PCA	GLN	engineered mutation	UNP W8P1L2

- Molecule 2 is an oligosaccharide called beta-D-mannopyranose-(1-4)-2-acetamido-2-deoxy-beta-D-glucopyranose-(1-4)-2-acetamido-2-deoxy-beta-D-glucopyranose.



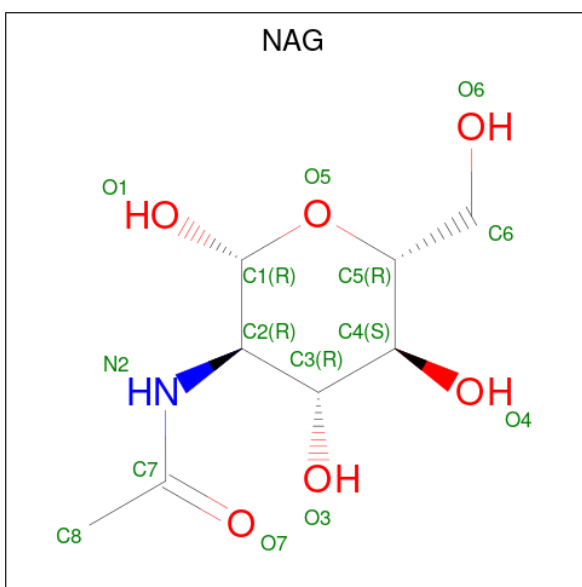
Mol	Chain	Residues	Atoms				ZeroOcc	AltConf	Trace
			Total	C	N	O			
2	D	3	39	22	2	15	0	0	0

- Molecule 3 is an oligosaccharide called 2-acetamido-2-deoxy-beta-D-glucopyranose-(1-4)-2-acetamido-2-deoxy-beta-D-glucopyranose.



Mol	Chain	Residues	Atoms				ZeroOcc	AltConf	Trace
3	E	2	Total	C	N	O	0	0	0
			28	16	2	10			
3	F	2	Total	C	N	O	0	0	0
			28	16	2	10			
3	G	2	Total	C	N	O	0	0	0
			28	16	2	10			
3	H	2	Total	C	N	O	0	0	0
			28	16	2	10			

- Molecule 4 is 2-acetamido-2-deoxy-beta-D-glucopyranose (three-letter code: NAG) (formula:  $C_8H_{15}NO_6$ ) (labeled as "Ligand of Interest" by depositor).



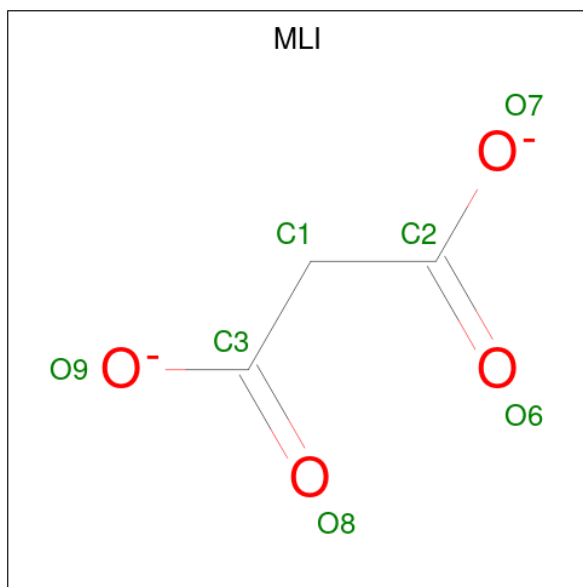
Mol	Chain	Residues	Atoms				ZeroOcc	AltConf
4	A	1	Total	C	N	O	0	0
			14	8	1	5		
4	A	1	Total	C	N	O	0	0
			14	8	1	5		
4	A	1	Total	C	N	O	0	0
			14	8	1	5		
4	A	1	Total	C	N	O	0	0
			14	8	1	5		
4	B	1	Total	C	N	O	0	0
			14	8	1	5		
4	B	1	Total	C	N	O	0	0
			14	8	1	5		
4	B	1	Total	C	N	O	0	0
			14	8	1	5		

*Continued on next page...*

Continued from previous page...

Mol	Chain	Residues	Atoms				ZeroOcc	AltConf
4	C	1	Total	C	N	O	0	0
			14	8	1	5		
4	C	1	Total	C	N	O	0	0
			14	8	1	5		
4	C	1	Total	C	N	O	0	0
			14	8	1	5		

- Molecule 5 is MALONATE ION (three-letter code: MLI) (formula:  $C_3H_2O_4$ ).



Mol	Chain	Residues	Atoms			ZeroOcc	AltConf
5	A	1	Total	C	O	0	0
			7	3	4		

- Molecule 6 is SODIUM ION (three-letter code: NA) (formula: Na).

Mol	Chain	Residues	Atoms		ZeroOcc	AltConf
6	C	1	Total	Na	0	0
			1	1		

- Molecule 7 is water.

Mol	Chain	Residues	Atoms		ZeroOcc	AltConf
7	A	94	Total	O	0	0
			94	94		
7	B	104	Total	O	0	0
			104	104		

Continued on next page...

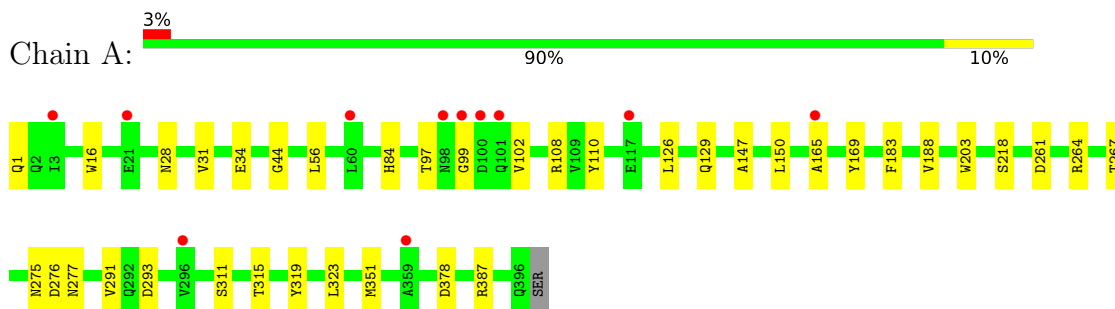
*Continued from previous page...*

<b>Mol</b>	<b>Chain</b>	<b>Residues</b>	<b>Atoms</b>		<b>ZeroOcc</b>	<b>AltConf</b>
7	C	82	Total	O	0	0
			82	82		

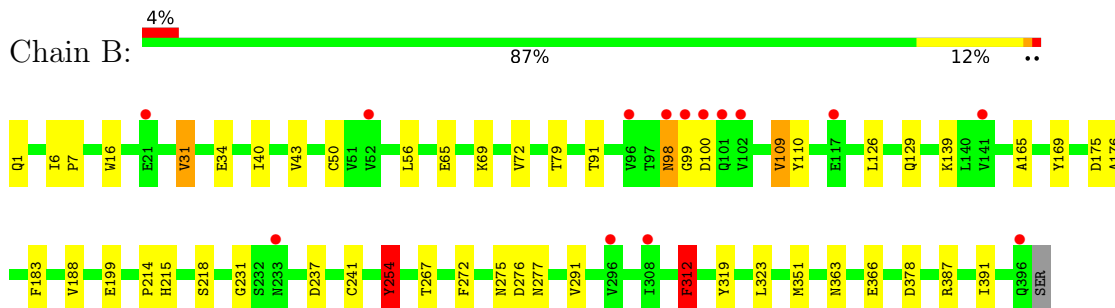
### 3 Residue-property plots [i](#)

These plots are drawn for all protein, RNA, DNA and oligosaccharide chains in the entry. The first graphic for a chain summarises the proportions of the various outlier classes displayed in the second graphic. The second graphic shows the sequence view annotated by issues in geometry and electron density. Residues are color-coded according to the number of geometric quality criteria for which they contain at least one outlier: green = 0, yellow = 1, orange = 2 and red = 3 or more. A red dot above a residue indicates a poor fit to the electron density ( $RSRZ > 2$ ). Stretches of 2 or more consecutive residues without any outlier are shown as a green connector. Residues present in the sample, but not in the model, are shown in grey.

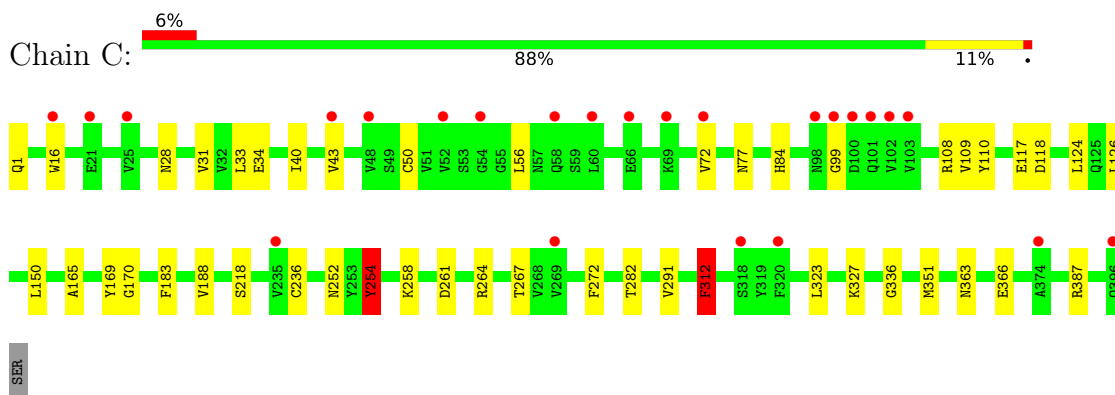
- Molecule 1: Glucanase



- Molecule 1: Glucanase



- Molecule 1: Glucanase



- Molecule 2: beta-D-mannopyranose-(1-4)-2-acetamido-2-deoxy-beta-D-glucopyranose-(1-4)-2-acetamido-2-deoxy-beta-D-glucopyranose



Chain D:  67% 33%

  
MAG1  
MAG2  
MAG3

- Molecule 3: 2-acetamido-2-deoxy-beta-D-glucopyranose-(1-4)-2-acetamido-2-deoxy-beta-D-glucopyranose

Chain E:  100%

  
MAG1

- Molecule 3: 2-acetamido-2-deoxy-beta-D-glucopyranose-(1-4)-2-acetamido-2-deoxy-beta-D-glucopyranose

Chain F:  50% 50%

  
MAG1  
MAG2

- Molecule 3: 2-acetamido-2-deoxy-beta-D-glucopyranose-(1-4)-2-acetamido-2-deoxy-beta-D-glucopyranose

Chain G:  50% 50%

  
MAG1  
MAG2

- Molecule 3: 2-acetamido-2-deoxy-beta-D-glucopyranose-(1-4)-2-acetamido-2-deoxy-beta-D-glucopyranose

Chain H:  50% 50%

  
MAG1  
MAG2

## 4 Data and refinement statistics

Property	Value	Source
Space group	C 2 2 21	Depositor
Cell constants a, b, c, $\alpha$ , $\beta$ , $\gamma$	113.37Å 263.21Å 197.82Å 90.00° 90.00° 90.00°	Depositor
Resolution (Å)	30.00 – 2.48 131.61 – 2.48	Depositor EDS
% Data completeness (in resolution range)	99.7 (30.00-2.48) 99.8 (131.61-2.48)	Depositor EDS
$R_{merge}$	(Not available)	Depositor
$R_{sym}$	0.12	Depositor
$\langle I/\sigma(I) \rangle$ <sup>1</sup>	1.68 (at 2.48Å)	Xtrriage
Refinement program	PHENIX 1.16_3549, PHENIX 1.16_3549	Depositor
R, $R_{free}$	0.170 , 0.190 0.173 , 0.197	Depositor DCC
$R_{free}$ test set	5116 reflections (4.88%)	wwPDB-VP
Wilson B-factor (Å <sup>2</sup> )	53.6	Xtrriage
Anisotropy	0.293	Xtrriage
Bulk solvent $k_{sol}$ (e/Å <sup>3</sup> ), $B_{sol}$ (Å <sup>2</sup> )	0.42 , 53.7	EDS
L-test for twinning <sup>2</sup>	$\langle  L  \rangle = 0.49$ , $\langle L^2 \rangle = 0.33$	Xtrriage
Estimated twinning fraction	No twinning to report.	Xtrriage
$F_o, F_c$ correlation	0.94	EDS
Total number of atoms	9354	wwPDB-VP
Average B, all atoms (Å <sup>2</sup> )	60.0	wwPDB-VP

Xtrriage's analysis on translational NCS is as follows: *The largest off-origin peak in the Patterson function is 2.59% of the height of the origin peak. No significant pseudotranslation is detected.*

<sup>1</sup>Intensities estimated from amplitudes.

<sup>2</sup>Theoretical values of  $\langle |L| \rangle$ ,  $\langle L^2 \rangle$  for acentric reflections are 0.5, 0.333 respectively for untwinned datasets, and 0.375, 0.2 for perfectly twinned datasets.

## 5 Model quality

### 5.1 Standard geometry

Bond lengths and bond angles in the following residue types are not validated in this section: NA, NAG, MLI, PCA, BMA

The Z score for a bond length (or angle) is the number of standard deviations the observed value is removed from the expected value. A bond length (or angle) with  $|Z| > 5$  is considered an outlier worth inspection. RMSZ is the root-mean-square of all Z scores of the bond lengths (or angles).

Mol	Chain	Bond lengths		Bond angles	
		RMSZ	# Z  >5	RMSZ	# Z  >5
1	A	0.43	0/2980	0.68	1/4072 (0.0%)
1	B	0.43	0/2980	0.71	4/4072 (0.1%)
1	C	0.41	0/2980	0.69	3/4072 (0.1%)
All	All	0.42	0/8940	0.70	8/12216 (0.1%)

Chiral center outliers are detected by calculating the chiral volume of a chiral center and verifying if the center is modelled as a planar moiety or with the opposite hand. A planarity outlier is detected by checking planarity of atoms in a peptide group, atoms in a mainchain group or atoms of a sidechain that are expected to be planar.

Mol	Chain	#Chirality outliers	#Planarity outliers
1	A	0	1
1	B	0	1
1	C	0	1
All	All	0	3

There are no bond length outliers.

All (8) bond angle outliers are listed below:

Mol	Chain	Res	Type	Atoms	Z	Observed(°)	Ideal(°)
1	C	254	TYR	CB-CG-CD2	-7.25	116.65	121.00
1	B	254	TYR	CB-CG-CD2	-6.99	116.81	121.00
1	A	351	MET	CG-SD-CE	-6.63	89.59	100.20
1	B	312	PHE	CB-CG-CD2	-6.54	116.22	120.80
1	C	351	MET	CG-SD-CE	-6.16	90.34	100.20
1	C	312	PHE	CB-CG-CD2	-5.87	116.69	120.80
1	B	312	PHE	CB-CG-CD1	5.53	124.67	120.80
1	B	351	MET	CG-SD-CE	-5.18	91.91	100.20

There are no chirality outliers.

All (3) planarity outliers are listed below:

Mol	Chain	Res	Type	Group
1	A	44	GLY	Peptide
1	B	254	TYR	Sidechain
1	C	254	TYR	Sidechain

## 5.2 Too-close contacts [i](#)

In the following table, the Non-H and H(model) columns list the number of non-hydrogen atoms and hydrogen atoms in the chain respectively. The H(added) column lists the number of hydrogen atoms added and optimized by MolProbity. The Clashes column lists the number of clashes within the asymmetric unit, whereas Symm-Clashes lists symmetry-related clashes.

Mol	Chain	Non-H	H(model)	H(added)	Clashes	Symm-Clashes
1	A	2925	0	2705	22	0
1	B	2925	0	2705	31	0
1	C	2925	0	2705	23	0
2	D	39	0	34	0	0
3	E	28	0	25	0	0
3	F	28	0	25	0	0
3	G	28	0	25	0	0
3	H	28	0	25	0	0
4	A	56	0	52	1	0
4	B	42	0	39	2	0
4	C	42	0	39	1	0
5	A	7	0	2	0	0
6	C	1	0	0	0	0
7	A	94	0	0	1	0
7	B	104	0	0	3	0
7	C	82	0	0	2	0
All	All	9354	0	8381	77	0

The all-atom clashscore is defined as the number of clashes found per 1000 atoms (including hydrogen atoms). The all-atom clashscore for this structure is 4.

All (77) close contacts within the same asymmetric unit are listed below, sorted by their clash magnitude.

Atom-1	Atom-2	Interatomic distance (Å)	Clash overlap (Å)
1:A:16:TRP:HB2	1:A:387:ARG:HG2	1.62	0.81
1:B:98:ASN:O	1:B:100:ASP:N	2.16	0.78
1:C:16:TRP:HB2	1:C:387:ARG:HG2	1.65	0.76

*Continued on next page...*

*Continued from previous page...*

Atom-1	Atom-2	Interatomic distance (Å)	Clash overlap (Å)
1:C:363:ASN:OD1	1:C:366:GLU:HB2	1.87	0.74
1:A:34:GLU:HG3	1:A:108:ARG:HH21	1.58	0.68
1:B:16:TRP:HB2	1:B:387:ARG:HG2	1.76	0.67
1:C:34:GLU:HG2	1:C:110:TYR:OH	1.97	0.63
1:B:277:ASN:OD1	4:B:507:NAG:N2	2.34	0.60
1:A:34:GLU:HG2	1:A:110:TYR:OH	2.01	0.60
1:A:34:GLU:HG3	1:A:108:ARG:NH2	2.18	0.58
1:A:165:ALA:HB1	1:A:169:TYR:HB2	1.86	0.58
1:C:31:VAL:HG13	1:C:109:VAL:HB	1.86	0.57
1:B:34:GLU:HG2	1:B:110:TYR:OH	2.04	0.57
1:A:34:GLU:CG	1:A:108:ARG:HH21	2.18	0.57
4:C:507:NAG:H3	4:C:507:NAG:H83	1.88	0.55
1:B:267:THR:HB	1:B:291:VAL:HB	1.89	0.55
1:B:312:PHE:C	1:B:312:PHE:CD1	2.80	0.55
1:B:31:VAL:HG13	1:B:109:VAL:HG13	1.90	0.54
1:B:91:THR:HG23	7:B:679:HOH:O	2.07	0.54
1:B:391:ILE:HB	4:B:507:NAG:H82	1.90	0.54
1:C:252:ASN:HA	1:C:258:LYS:HD2	1.88	0.54
1:C:312:PHE:C	1:C:312:PHE:CD1	2.81	0.54
1:B:363:ASN:OD1	1:B:366:GLU:HB2	2.07	0.54
1:A:311:SER:O	1:A:315:THR:HG23	2.09	0.53
1:B:275:ASN:OD1	1:B:276:ASP:N	2.41	0.53
1:B:43:VAL:HG22	1:B:72:VAL:CG2	2.40	0.51
1:B:65:GLU:HG2	1:B:69:LYS:NZ	2.26	0.51
1:A:264:ARG:NH2	1:A:293:ASP:OD2	2.45	0.50
1:B:56:LEU:HD11	1:B:188:VAL:HG13	1.94	0.49
1:B:79:THR:HG23	7:B:678:HOH:O	2.13	0.49
1:A:97:THR:HG22	1:A:102:VAL:HG22	1.94	0.49
1:A:56:LEU:CD1	1:A:188:VAL:HG13	2.43	0.49
1:C:261:ASP:OD2	1:C:264:ARG:NH1	2.46	0.49
1:A:218:SER:HB3	1:A:323:LEU:HD22	1.95	0.49
1:A:277:ASN:OD1	4:A:506:NAG:N2	2.46	0.49
1:C:282:THR:HG23	1:C:327:LYS:HG3	1.95	0.48
1:A:126:LEU:HD12	1:A:150:LEU:HD11	1.95	0.48
1:A:56:LEU:HD11	1:A:188:VAL:HG13	1.96	0.47
1:B:319:TYR:CE2	1:B:323:LEU:HD11	2.49	0.47
1:B:254:TYR:C	1:B:254:TYR:CD1	2.88	0.47
1:C:254:TYR:CD1	1:C:254:TYR:C	2.87	0.47
1:C:165:ALA:HB1	1:C:169:TYR:HB2	1.96	0.47
1:C:267:THR:HB	1:C:291:VAL:HB	1.95	0.46
1:A:126:LEU:HA	1:A:129:GLN:HB2	1.98	0.46

*Continued on next page...*

*Continued from previous page...*

Atom-1	Atom-2	Interatomic distance (Å)	Clash overlap (Å)
1:A:261:ASP:OD2	1:A:264:ARG:NH1	2.49	0.45
1:B:165:ALA:HB1	1:B:169:TYR:HB2	1.98	0.45
1:C:126:LEU:HD12	1:C:150:LEU:HD11	1.99	0.45
1:B:43:VAL:HG22	1:B:72:VAL:HG23	1.98	0.45
1:C:34:GLU:CG	1:C:108:ARG:HH21	2.30	0.45
1:A:147:ALA:HA	1:A:203:TRP:O	2.17	0.44
1:C:34:GLU:HG3	1:C:108:ARG:HH21	1.83	0.44
1:A:319:TYR:CE2	1:A:323:LEU:HD11	2.53	0.44
1:B:126:LEU:HA	1:B:129:GLN:HB2	1.99	0.44
1:A:267:THR:HB	1:A:291:VAL:HB	2.00	0.44
1:B:237:ASP:HB2	1:B:323:LEU:HD12	2.00	0.44
1:C:40:ILE:HG22	1:C:50:CYS:HB2	2.00	0.43
1:C:43:VAL:HG22	1:C:72:VAL:HG13	2.00	0.43
1:B:40:ILE:HG22	1:B:50:CYS:HB2	2.00	0.43
1:B:139:LYS:NZ	1:B:378:ASP:O	2.51	0.43
1:B:31:VAL:HG13	1:B:109:VAL:CG1	2.49	0.42
1:C:218:SER:HB3	1:C:323:LEU:HD22	2.00	0.42
1:C:117:GLU:HG2	1:C:118:ASP:N	2.34	0.42
1:B:6:ILE:HA	1:B:7:PRO:HD3	1.86	0.42
1:B:175:ASP:HB2	1:B:199:GLU:OE1	2.19	0.42
1:C:84:HIS:HD2	7:C:603:HOH:O	2.00	0.42
1:B:214:PRO:HG2	1:B:241:CYS:HB3	2.01	0.42
1:B:254:TYR:C	1:B:254:TYR:HD1	2.23	0.42
1:A:378:ASP:OD1	1:A:378:ASP:N	2.50	0.42
1:C:236:CYS:HB2	7:C:646:HOH:O	2.20	0.42
1:C:33:LEU:O	1:C:170:GLY:HA3	2.20	0.41
1:C:124:LEU:O	1:C:336:GLY:HA2	2.21	0.41
1:A:275:ASN:OD1	1:A:276:ASP:N	2.54	0.41
1:C:56:LEU:HD11	1:C:188:VAL:HG13	2.02	0.41
1:B:231:GLY:HA3	7:B:673:HOH:O	2.21	0.41
1:B:218:SER:HB3	1:B:323:LEU:HD22	2.03	0.41
1:A:84:HIS:ND1	7:A:604:HOH:O	2.37	0.40
1:B:176:ALA:CB	1:B:215:HIS:HB3	2.52	0.40

There are no symmetry-related clashes.

## 5.3 Torsion angles [i](#)

### 5.3.1 Protein backbone [i](#)

In the following table, the Percentiles column shows the percent Ramachandran outliers of the chain as a percentile score with respect to all X-ray entries followed by that with respect to entries of similar resolution.

The Analysed column shows the number of residues for which the backbone conformation was analysed, and the total number of residues.

Mol	Chain	Analysed	Favoured	Allowed	Outliers	Percentiles	
1	A	394/397 (99%)	383 (97%)	10 (2%)	1 (0%)	41	59
1	B	394/397 (99%)	383 (97%)	9 (2%)	2 (0%)	29	46
1	C	394/397 (99%)	385 (98%)	8 (2%)	1 (0%)	41	59
All	All	1182/1191 (99%)	1151 (97%)	27 (2%)	4 (0%)	41	59

All (4) Ramachandran outliers are listed below:

Mol	Chain	Res	Type
1	B	99	GLY
1	B	98	ASN
1	A	99	GLY
1	C	99	GLY

### 5.3.2 Protein sidechains [i](#)

In the following table, the Percentiles column shows the percent sidechain outliers of the chain as a percentile score with respect to all X-ray entries followed by that with respect to entries of similar resolution.

The Analysed column shows the number of residues for which the sidechain conformation was analysed, and the total number of residues.

Mol	Chain	Analysed	Rotameric	Outliers	Percentiles	
1	A	328/329 (100%)	325 (99%)	3 (1%)	78	91
1	B	328/329 (100%)	322 (98%)	6 (2%)	59	80
1	C	328/329 (100%)	322 (98%)	6 (2%)	59	80
All	All	984/987 (100%)	969 (98%)	15 (2%)	65	83

All (15) residues with a non-rotameric sidechain are listed below:

Mol	Chain	Res	Type
1	A	28	ASN
1	A	31	VAL
1	A	183	PHE
1	B	31	VAL
1	B	109	VAL
1	B	183	PHE
1	B	254	TYR
1	B	272	PHE
1	B	312	PHE
1	C	28	ASN
1	C	77	ASN
1	C	183	PHE
1	C	254	TYR
1	C	272	PHE
1	C	312	PHE

Sometimes sidechains can be flipped to improve hydrogen bonding and reduce clashes. There are no such sidechains identified.

### 5.3.3 RNA [i](#)

There are no RNA molecules in this entry.

## 5.4 Non-standard residues in protein, DNA, RNA chains [i](#)

3 non-standard protein/DNA/RNA residues are modelled in this entry.

In the following table, the Counts columns list the number of bonds (or angles) for which Mogul statistics could be retrieved, the number of bonds (or angles) that are observed in the model and the number of bonds (or angles) that are defined in the Chemical Component Dictionary. The Link column lists molecule types, if any, to which the group is linked. The Z score for a bond length (or angle) is the number of standard deviations the observed value is removed from the expected value. A bond length (or angle) with  $|Z| > 2$  is considered an outlier worth inspection. RMSZ is the root-mean-square of all Z scores of the bond lengths (or angles).

Mol	Type	Chain	Res	Link	Bond lengths			Bond angles		
					Counts	RMSZ	# Z  > 2	Counts	RMSZ	# Z  > 2
1	PCA	C	1	1	7,8,9	1.70	1 (14%)	9,10,12	1.85	4 (44%)
1	PCA	B	1	1	7,8,9	1.78	1 (14%)	9,10,12	2.00	4 (44%)
1	PCA	A	1	1	7,8,9	1.68	1 (14%)	9,10,12	1.65	3 (33%)

In the following table, the Chirals column lists the number of chiral outliers, the number of chiral



centers analysed, the number of these observed in the model and the number defined in the Chemical Component Dictionary. Similar counts are reported in the Torsion and Rings columns. '-' means no outliers of that kind were identified.

Mol	Type	Chain	Res	Link	Chirals	Torsions	Rings
1	PCA	C	1	1	-	0/0/11/13	0/1/1/1
1	PCA	B	1	1	-	0/0/11/13	0/1/1/1
1	PCA	A	1	1	-	0/0/11/13	0/1/1/1

All (3) bond length outliers are listed below:

Mol	Chain	Res	Type	Atoms	Z	Observed(Å)	Ideal(Å)
1	B	1	PCA	CD-N	4.57	1.46	1.34
1	C	1	PCA	CD-N	4.35	1.46	1.34
1	A	1	PCA	CD-N	4.23	1.45	1.34

All (11) bond angle outliers are listed below:

Mol	Chain	Res	Type	Atoms	Z	Observed(°)	Ideal(°)
1	B	1	PCA	CA-N-CD	-3.04	103.18	113.58
1	C	1	PCA	CA-N-CD	-2.78	104.07	113.58
1	B	1	PCA	OE-CD-CG	-2.72	122.02	126.76
1	A	1	PCA	CA-N-CD	-2.68	104.42	113.58
1	B	1	PCA	CB-CA-N	2.62	110.82	103.30
1	C	1	PCA	CB-CA-N	2.55	110.62	103.30
1	B	1	PCA	CG-CD-N	2.46	114.76	108.39
1	C	1	PCA	OE-CD-CG	-2.37	122.63	126.76
1	C	1	PCA	CG-CD-N	2.35	114.48	108.39
1	A	1	PCA	CB-CA-N	2.35	110.05	103.30
1	A	1	PCA	CG-CD-N	2.01	113.59	108.39

There are no chirality outliers.

There are no torsion outliers.

There are no ring outliers.

No monomer is involved in short contacts.

## 5.5 Carbohydrates i

11 monosaccharides are modelled in this entry.

In the following table, the Counts columns list the number of bonds (or angles) for which Mogul statistics could be retrieved, the number of bonds (or angles) that are observed in the model and the number of bonds (or angles) that are defined in the Chemical Component Dictionary. The

Link column lists molecule types, if any, to which the group is linked. The Z score for a bond length (or angle) is the number of standard deviations the observed value is removed from the expected value. A bond length (or angle) with  $|Z| > 2$  is considered an outlier worth inspection. RMSZ is the root-mean-square of all Z scores of the bond lengths (or angles).

Mol	Type	Chain	Res	Link	Bond lengths			Bond angles		
					Counts	RMSZ	# Z  > 2	Counts	RMSZ	# Z  > 2
2	NAG	D	1	2,1	14,14,15	0.39	0	17,19,21	0.72	1 (5%)
2	NAG	D	2	2	14,14,15	0.25	0	17,19,21	0.49	0
2	BMA	D	3	2	11,11,12	0.77	0	15,15,17	0.88	0
3	NAG	E	1	3,1	14,14,15	0.67	0	17,19,21	0.52	0
3	NAG	E	2	3	14,14,15	0.36	0	17,19,21	0.78	0
3	NAG	F	1	3,1	14,14,15	0.90	1 (7%)	17,19,21	0.65	1 (5%)
3	NAG	F	2	3	14,14,15	0.23	0	17,19,21	0.56	0
3	NAG	G	1	3,1	14,14,15	0.43	0	17,19,21	0.76	1 (5%)
3	NAG	G	2	3	14,14,15	0.37	0	17,19,21	0.46	0
3	NAG	H	1	3,1	14,14,15	0.72	1 (7%)	17,19,21	0.60	0
3	NAG	H	2	3	14,14,15	0.41	0	17,19,21	0.59	0

In the following table, the Chirals column lists the number of chiral outliers, the number of chiral centers analysed, the number of these observed in the model and the number defined in the Chemical Component Dictionary. Similar counts are reported in the Torsion and Rings columns. '-' means no outliers of that kind were identified.

Mol	Type	Chain	Res	Link	Chirals	Torsions	Rings
2	NAG	D	1	2,1	-	0/6/23/26	0/1/1/1
2	NAG	D	2	2	-	2/6/23/26	0/1/1/1
2	BMA	D	3	2	-	2/2/19/22	0/1/1/1
3	NAG	E	1	3,1	-	2/6/23/26	0/1/1/1
3	NAG	E	2	3	-	3/6/23/26	0/1/1/1
3	NAG	F	1	3,1	-	0/6/23/26	0/1/1/1
3	NAG	F	2	3	-	2/6/23/26	0/1/1/1
3	NAG	G	1	3,1	-	0/6/23/26	0/1/1/1
3	NAG	G	2	3	-	0/6/23/26	0/1/1/1
3	NAG	H	1	3,1	-	2/6/23/26	0/1/1/1
3	NAG	H	2	3	-	2/6/23/26	0/1/1/1

All (2) bond length outliers are listed below:

Mol	Chain	Res	Type	Atoms	Z	Observed(Å)	Ideal(Å)
3	F	1	NAG	C1-C2	2.95	1.56	1.52
3	H	1	NAG	C1-C2	2.05	1.55	1.52

All (3) bond angle outliers are listed below:

Mol	Chain	Res	Type	Atoms	Z	Observed(°)	Ideal(°)
3	G	1	NAG	C1-O5-C5	2.38	115.42	112.19
2	D	1	NAG	C1-O5-C5	2.22	115.20	112.19
3	F	1	NAG	C1-O5-C5	2.03	114.95	112.19

There are no chirality outliers.

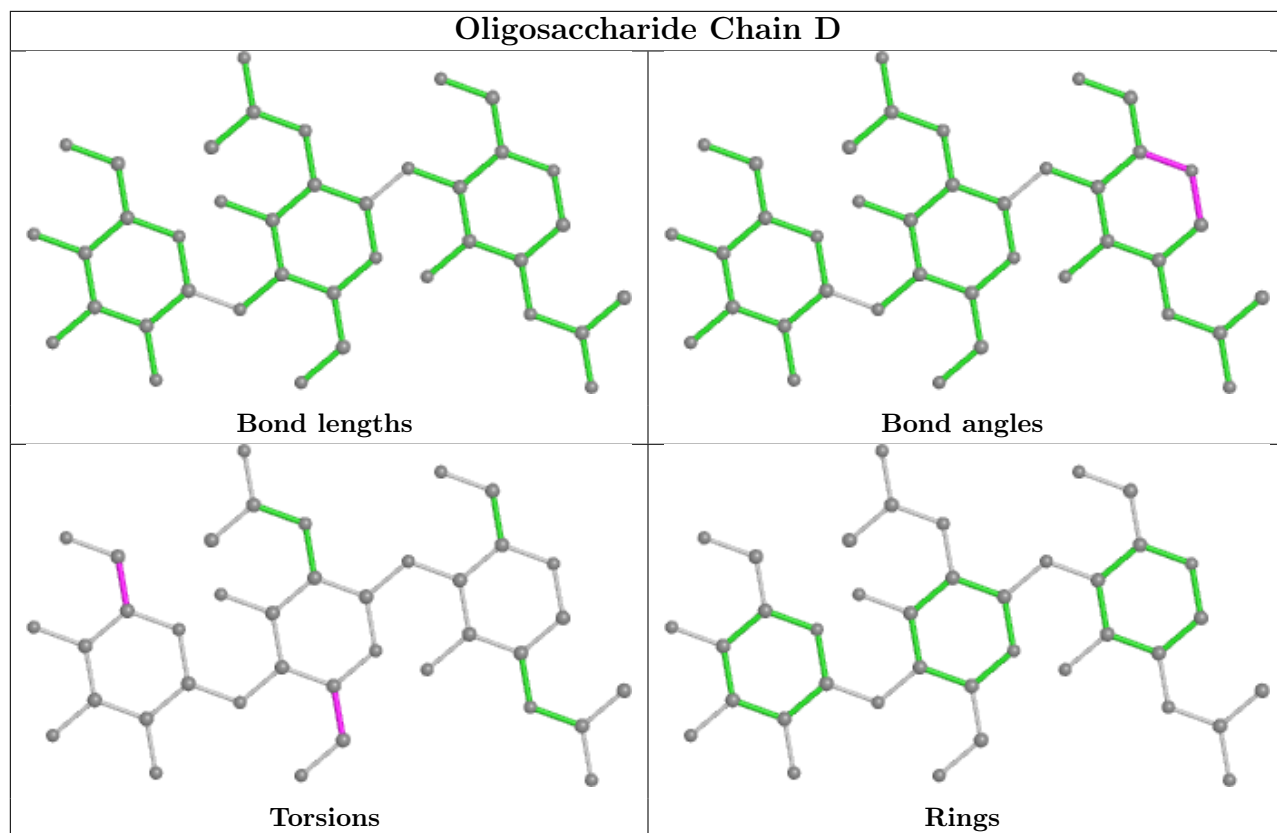
All (15) torsion outliers are listed below:

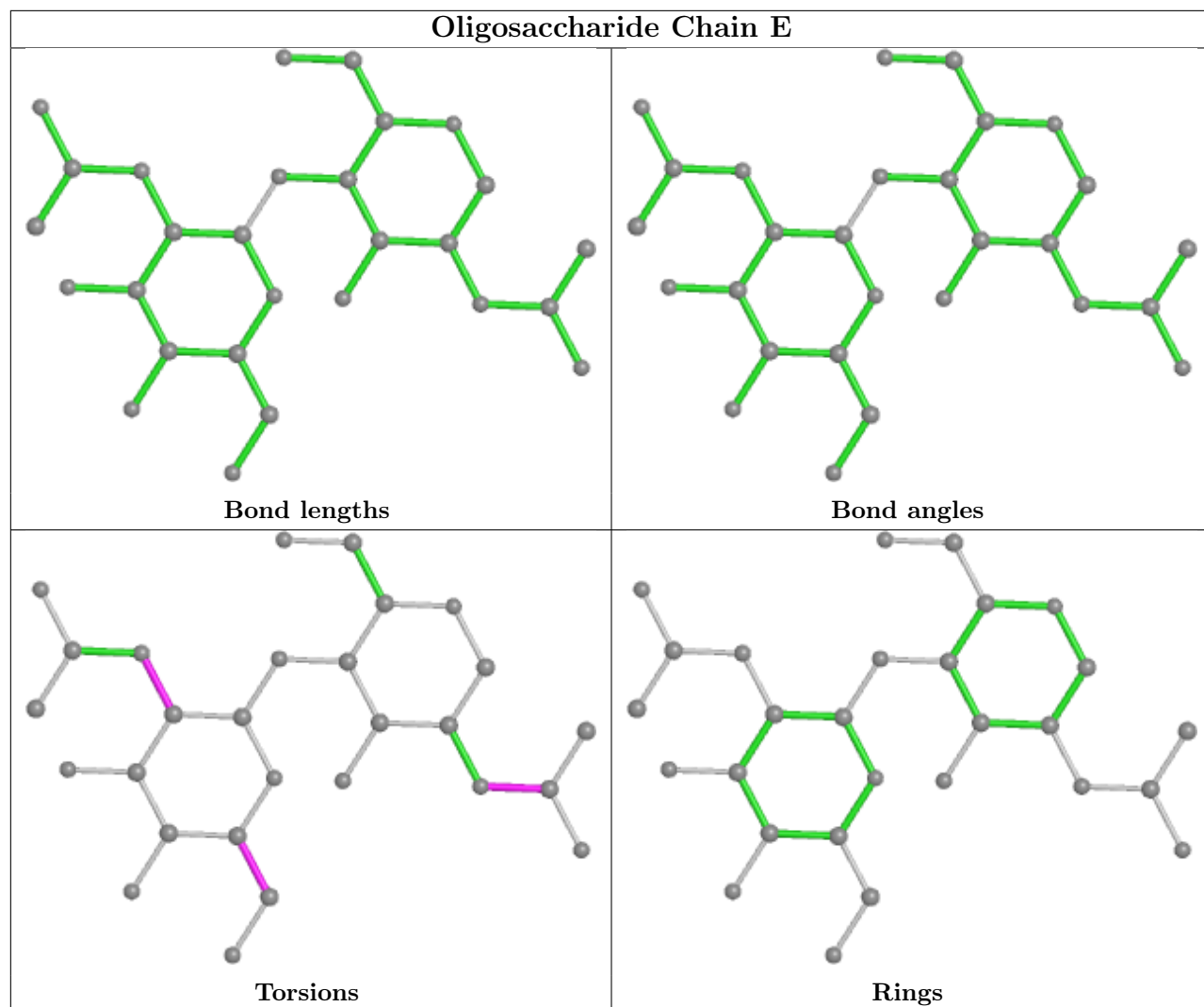
Mol	Chain	Res	Type	Atoms
3	H	2	NAG	O5-C5-C6-O6
3	F	2	NAG	O5-C5-C6-O6
3	H	2	NAG	C4-C5-C6-O6
3	E	2	NAG	O5-C5-C6-O6
3	E	2	NAG	C4-C5-C6-O6
3	E	1	NAG	C8-C7-N2-C2
3	E	1	NAG	O7-C7-N2-C2
3	F	2	NAG	C4-C5-C6-O6
2	D	2	NAG	C4-C5-C6-O6
2	D	3	BMA	O5-C5-C6-O6
2	D	2	NAG	O5-C5-C6-O6
3	H	1	NAG	O5-C5-C6-O6
3	H	1	NAG	C4-C5-C6-O6
3	E	2	NAG	C3-C2-N2-C7
2	D	3	BMA	C4-C5-C6-O6

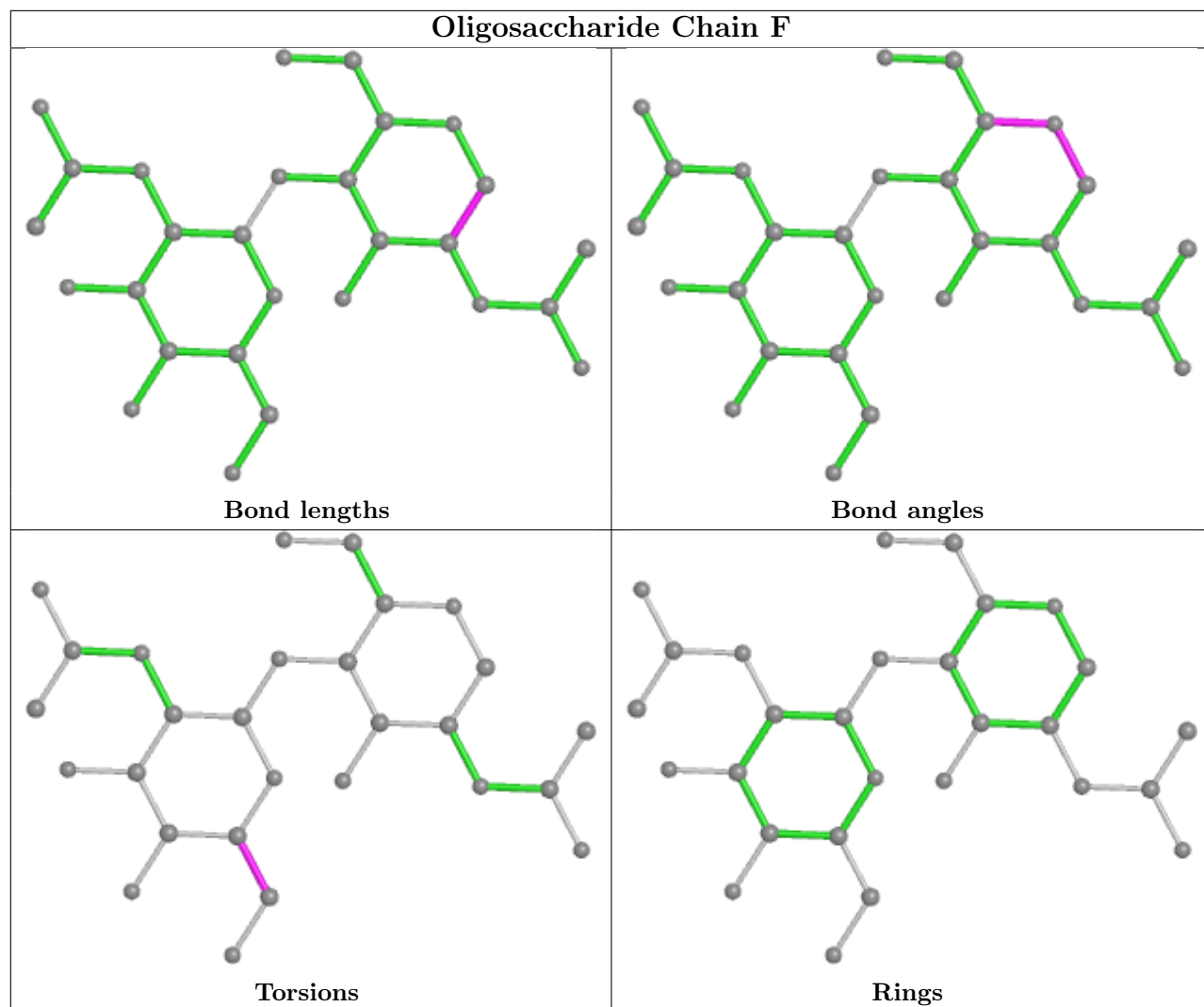
There are no ring outliers.

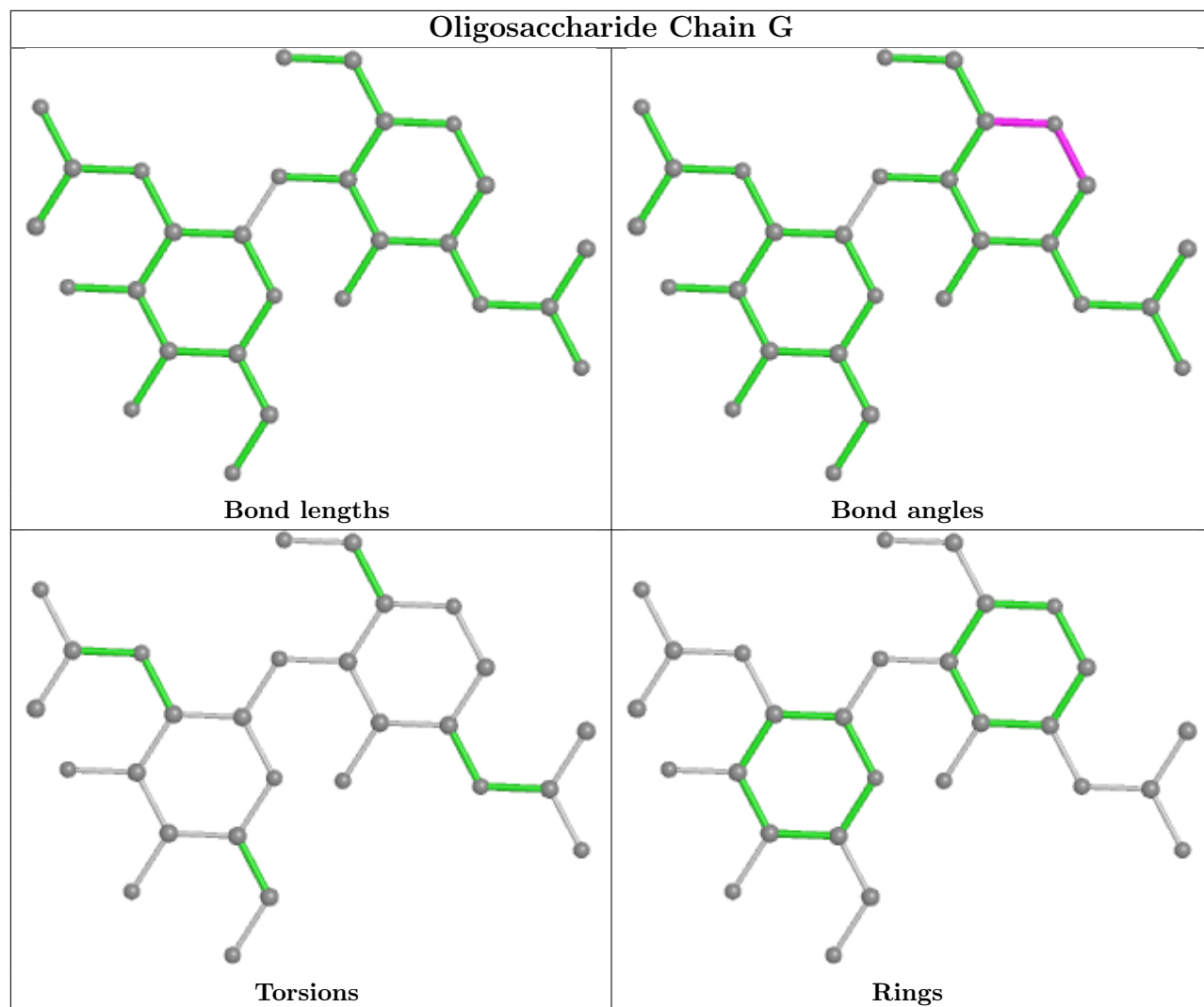
No monomer is involved in short contacts.

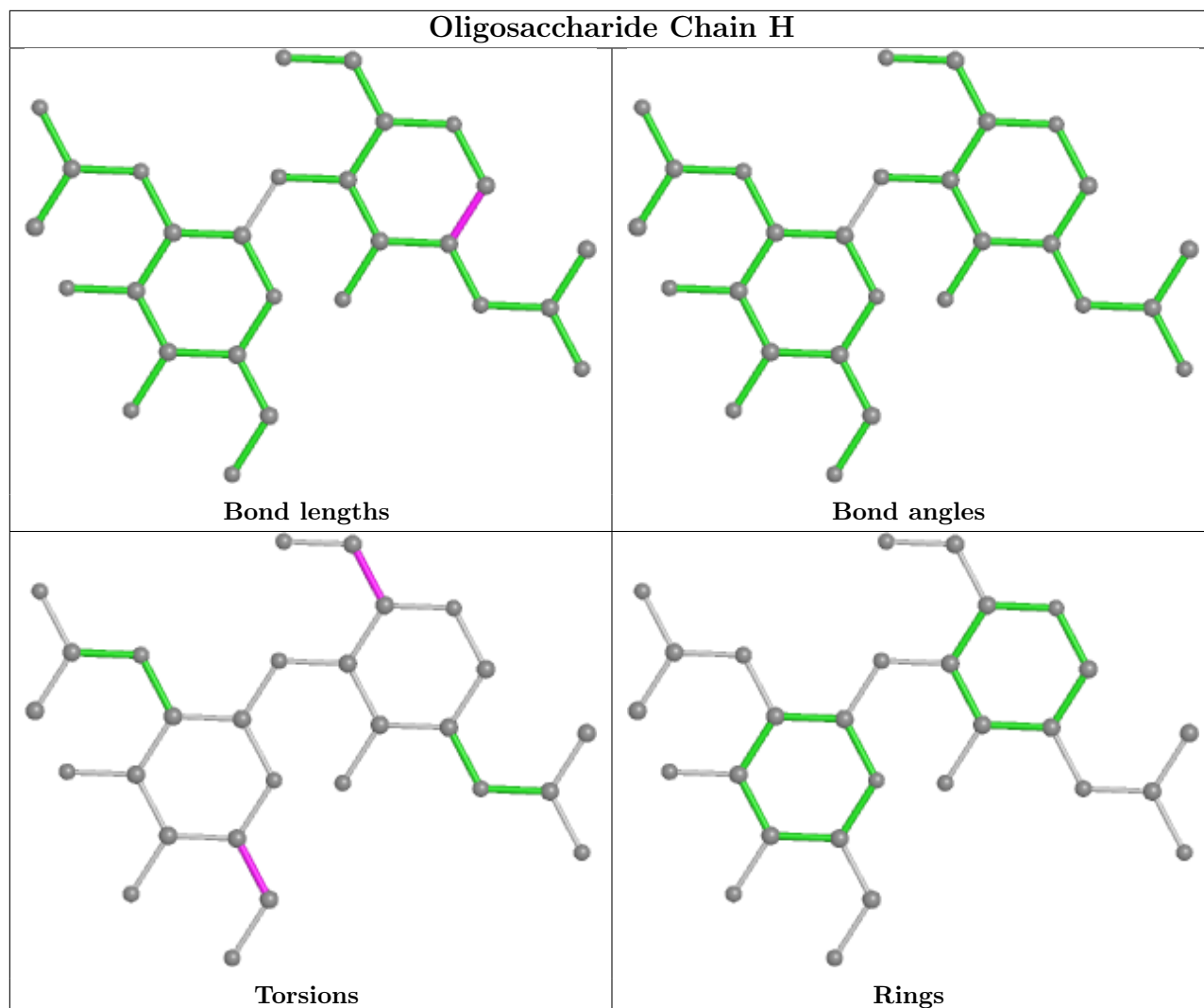
The following is a two-dimensional graphical depiction of Mogul quality analysis of bond lengths, bond angles, torsion angles, and ring geometry for oligosaccharide.











## 5.6 Ligand geometry [i](#)

Of 12 ligands modelled in this entry, 1 is monoatomic - leaving 11 for Mogul analysis.

In the following table, the Counts columns list the number of bonds (or angles) for which Mogul statistics could be retrieved, the number of bonds (or angles) that are observed in the model and the number of bonds (or angles) that are defined in the Chemical Component Dictionary. The Link column lists molecule types, if any, to which the group is linked. The Z score for a bond length (or angle) is the number of standard deviations the observed value is removed from the expected value. A bond length (or angle) with  $|Z| > 2$  is considered an outlier worth inspection. RMSZ is the root-mean-square of all Z scores of the bond lengths (or angles).

Mol	Type	Chain	Res	Link	Bond lengths			Bond angles		
					Counts	RMSZ	$\# Z  > 2$	Counts	RMSZ	$\# Z  > 2$
4	NAG	B	507	1	14,14,15	0.99	2 (14%)	17,19,21	0.65	0
4	NAG	C	501	1	14,14,15	0.64	0	17,19,21	0.58	0
4	NAG	A	506	1	14,14,15	0.93	1 (7%)	17,19,21	0.74	1 (5%)



Mol	Type	Chain	Res	Link	Bond lengths			Bond angles		
					Counts	RMSZ	# Z  > 2	Counts	RMSZ	# Z  > 2
4	NAG	A	505	1	14,14,15	0.22	0	17,19,21	0.55	0
4	NAG	C	506	1	14,14,15	0.86	2 (14%)	17,19,21	0.66	1 (5%)
5	MLI	A	508	-	6,6,6	2.09	2 (33%)	7,7,7	2.32	4 (57%)
4	NAG	B	501	1	14,14,15	0.36	0	17,19,21	0.58	0
4	NAG	B	506	1	14,14,15	0.91	1 (7%)	17,19,21	0.52	0
4	NAG	A	501	1	14,14,15	0.29	0	17,19,21	0.69	0
4	NAG	C	507	1	14,14,15	0.78	1 (7%)	17,19,21	1.17	1 (5%)
4	NAG	A	507	1	14,14,15	0.73	0	17,19,21	0.96	1 (5%)

In the following table, the Chirals column lists the number of chiral outliers, the number of chiral centers analysed, the number of these observed in the model and the number defined in the Chemical Component Dictionary. Similar counts are reported in the Torsion and Rings columns. '-' means no outliers of that kind were identified.

Mol	Type	Chain	Res	Link	Chirals	Torsions	Rings
4	NAG	B	507	1	-	2/6/23/26	0/1/1/1
4	NAG	C	501	1	-	2/6/23/26	0/1/1/1
4	NAG	A	506	1	-	3/6/23/26	0/1/1/1
4	NAG	A	505	1	-	4/6/23/26	0/1/1/1
4	NAG	C	506	1	-	0/6/23/26	0/1/1/1
5	MLI	A	508	-	-	0/4/4/4	-
4	NAG	B	501	1	-	2/6/23/26	0/1/1/1
4	NAG	B	506	1	-	1/6/23/26	0/1/1/1
4	NAG	A	501	1	-	2/6/23/26	0/1/1/1
4	NAG	C	507	1	-	5/6/23/26	0/1/1/1
4	NAG	A	507	1	-	0/6/23/26	0/1/1/1

All (9) bond length outliers are listed below:

Mol	Chain	Res	Type	Atoms	Z	Observed(Å)	Ideal(Å)
5	A	508	MLI	C1-C3	3.57	1.56	1.51
4	B	506	NAG	C1-C2	2.96	1.56	1.52
4	A	506	NAG	C1-C2	2.95	1.56	1.52
4	B	507	NAG	C1-C2	2.88	1.56	1.52
4	C	507	NAG	C1-C2	2.53	1.56	1.52
5	A	508	MLI	C1-C2	2.50	1.54	1.51
4	C	506	NAG	C1-C2	2.24	1.55	1.52
4	B	507	NAG	O5-C1	2.23	1.47	1.43
4	C	506	NAG	O5-C1	2.22	1.47	1.43

All (8) bond angle outliers are listed below:

Mol	Chain	Res	Type	Atoms	Z	Observed(°)	Ideal(°)
4	C	507	NAG	C2-N2-C7	4.12	128.76	122.90
5	A	508	MLI	O9-C3-O8	-3.57	114.39	123.30
5	A	508	MLI	O9-C3-C1	3.22	124.84	114.54
4	A	507	NAG	C1-O5-C5	3.19	116.52	112.19
5	A	508	MLI	O7-C2-C1	2.46	122.40	114.54
4	A	506	NAG	C1-O5-C5	2.17	115.13	112.19
5	A	508	MLI	O7-C2-O6	-2.15	117.93	123.30
4	C	506	NAG	C1-O5-C5	2.01	114.92	112.19

There are no chirality outliers.

All (21) torsion outliers are listed below:

Mol	Chain	Res	Type	Atoms
4	A	505	NAG	C4-C5-C6-O6
4	A	506	NAG	C4-C5-C6-O6
4	B	501	NAG	O5-C5-C6-O6
4	A	501	NAG	O5-C5-C6-O6
4	A	505	NAG	O5-C5-C6-O6
4	A	506	NAG	O5-C5-C6-O6
4	C	501	NAG	O5-C5-C6-O6
4	A	501	NAG	C4-C5-C6-O6
4	B	501	NAG	C4-C5-C6-O6
4	C	501	NAG	C4-C5-C6-O6
4	A	505	NAG	C8-C7-N2-C2
4	A	505	NAG	O7-C7-N2-C2
4	C	507	NAG	C8-C7-N2-C2
4	C	507	NAG	O7-C7-N2-C2
4	C	507	NAG	O5-C5-C6-O6
4	B	506	NAG	O5-C5-C6-O6
4	B	507	NAG	O5-C5-C6-O6
4	A	506	NAG	C3-C2-N2-C7
4	B	507	NAG	C3-C2-N2-C7
4	C	507	NAG	C4-C5-C6-O6
4	C	507	NAG	C3-C2-N2-C7

There are no ring outliers.

3 monomers are involved in 4 short contacts:

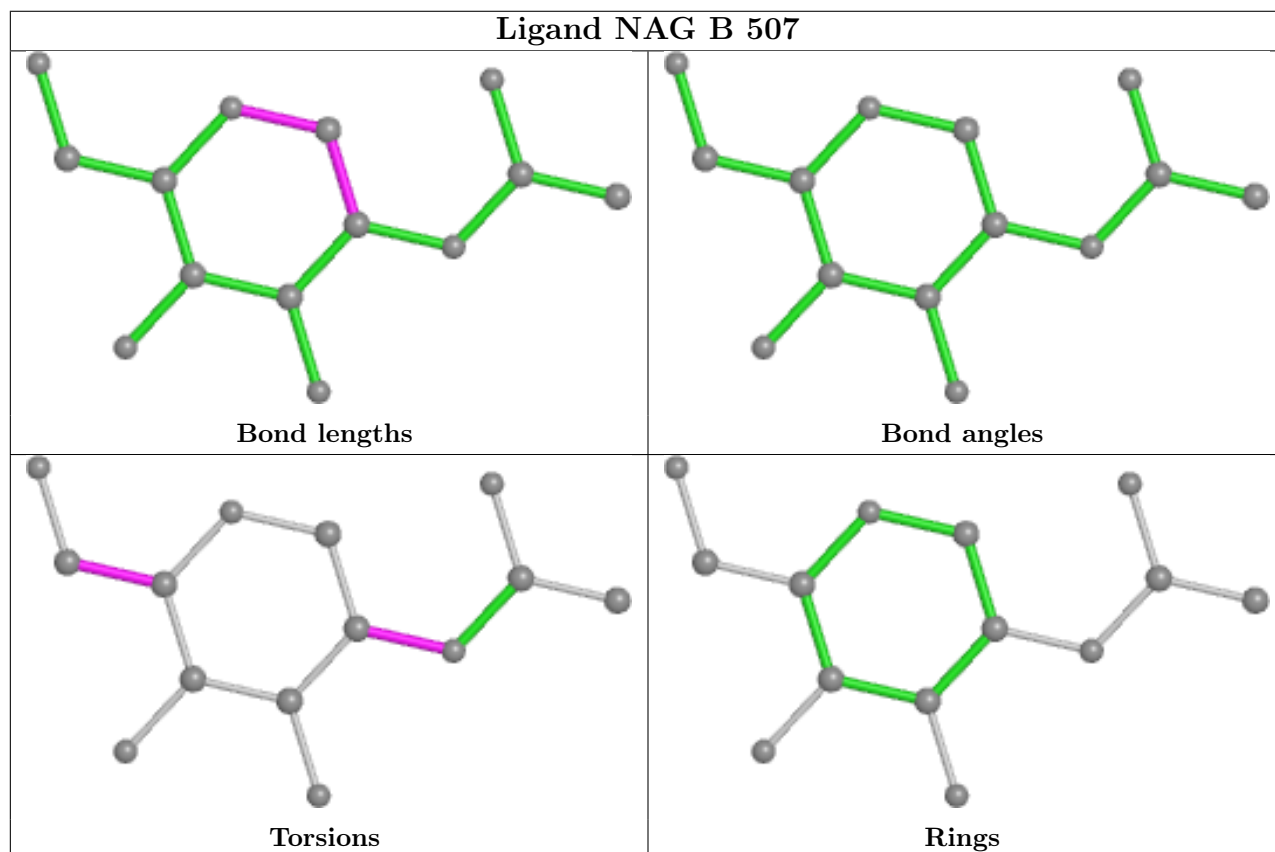
Mol	Chain	Res	Type	Clashes	Symm-Clashes
4	B	507	NAG	2	0

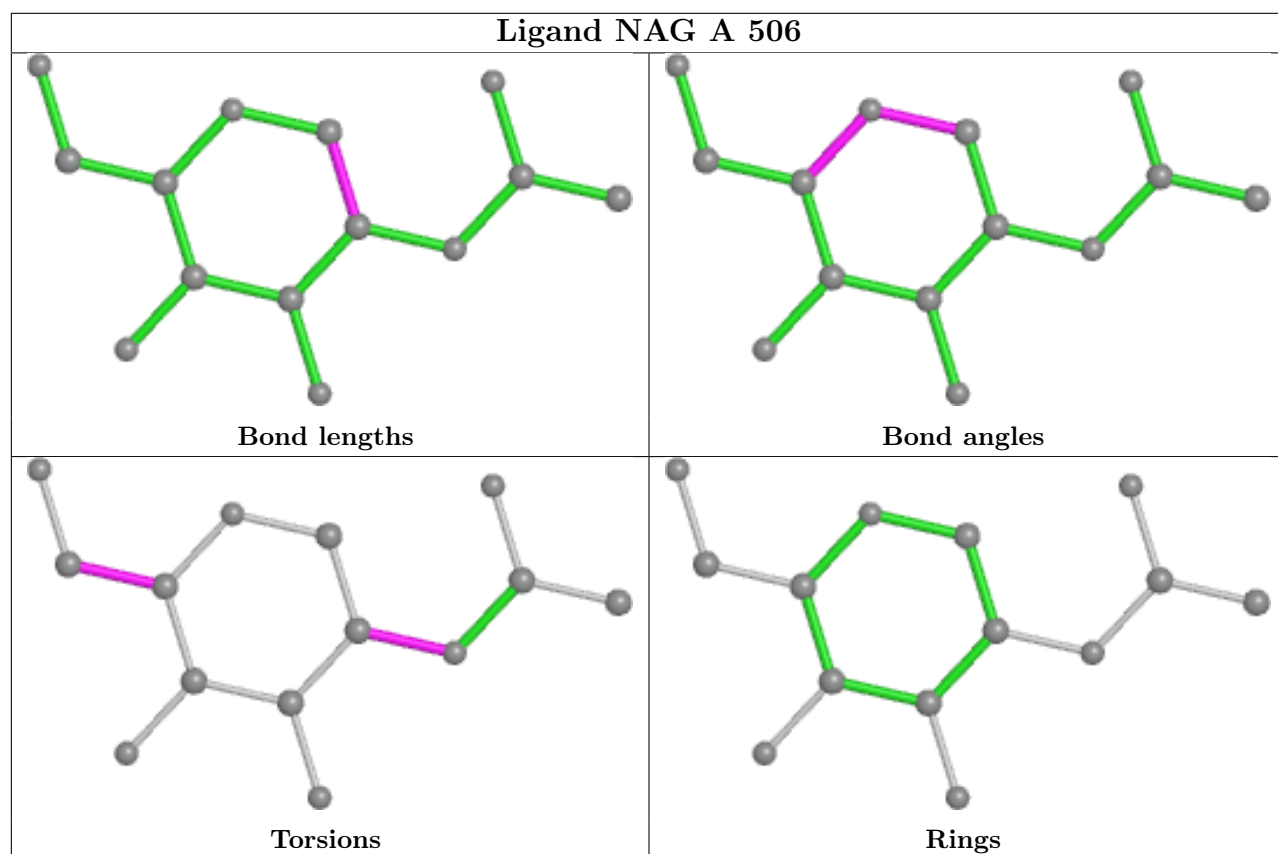
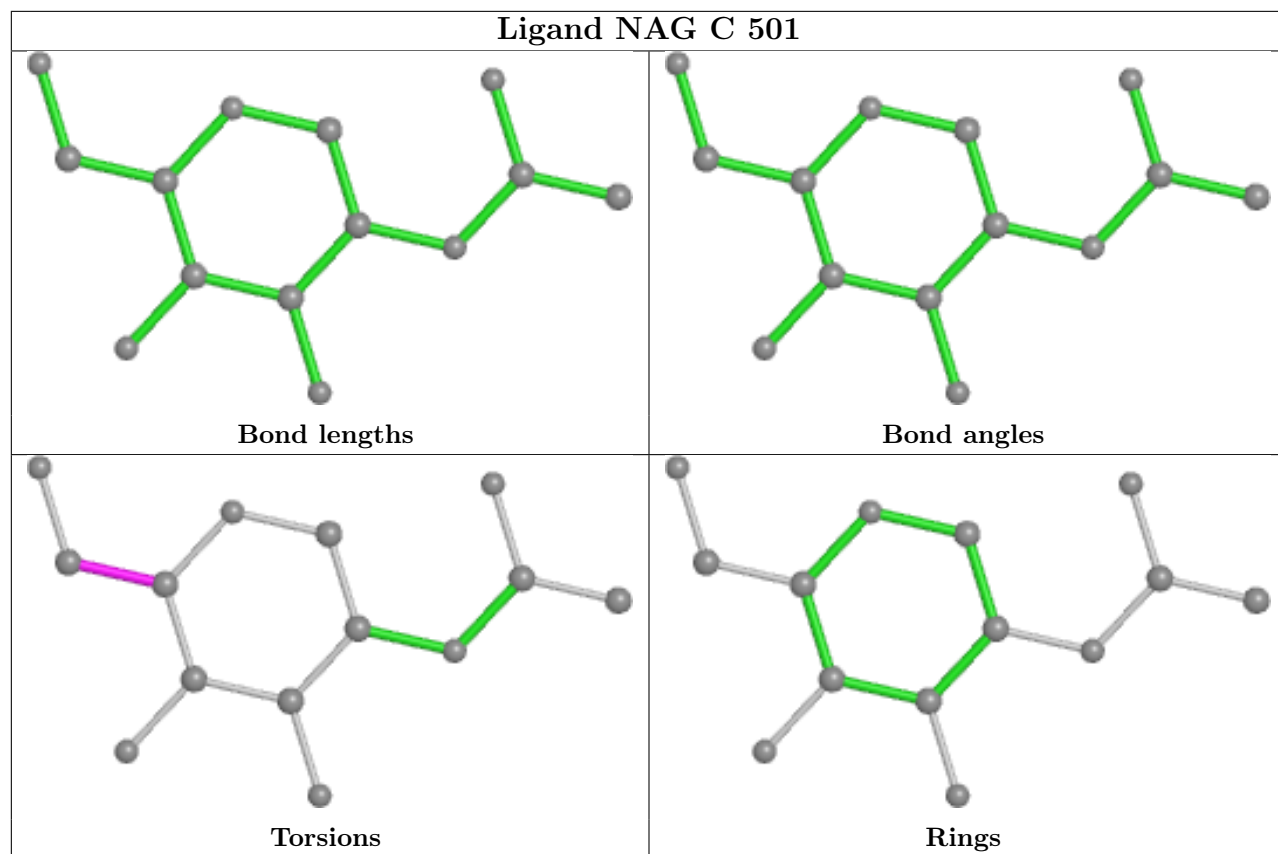
*Continued on next page...*

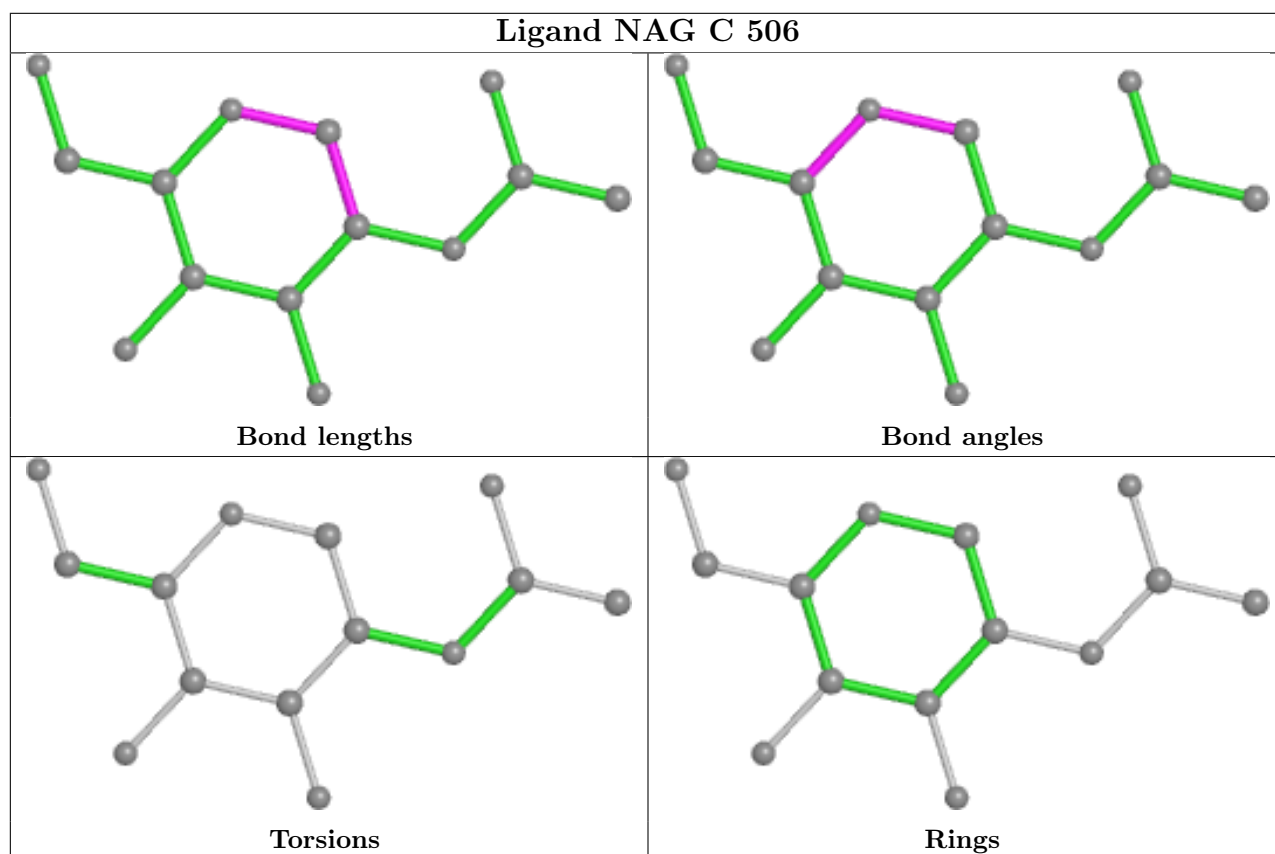
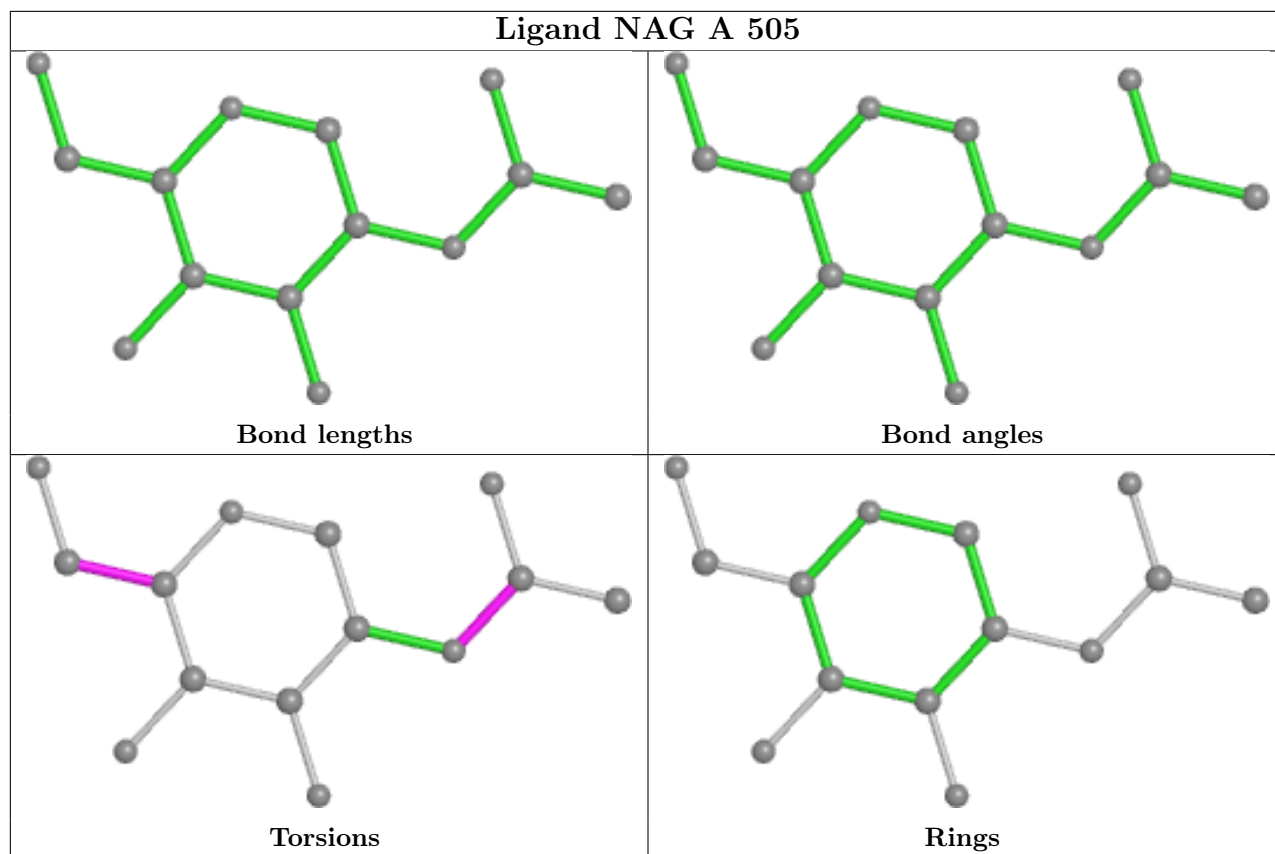
*Continued from previous page...*

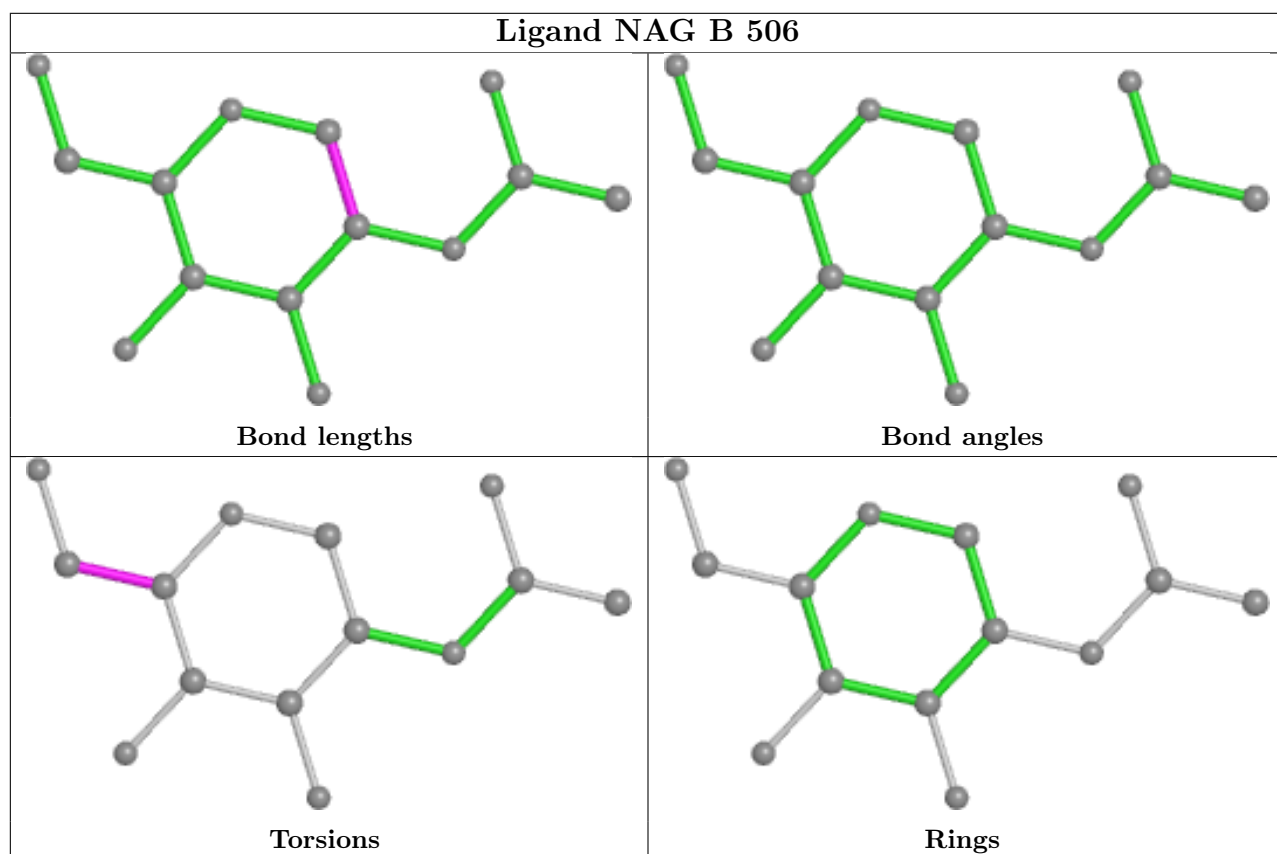
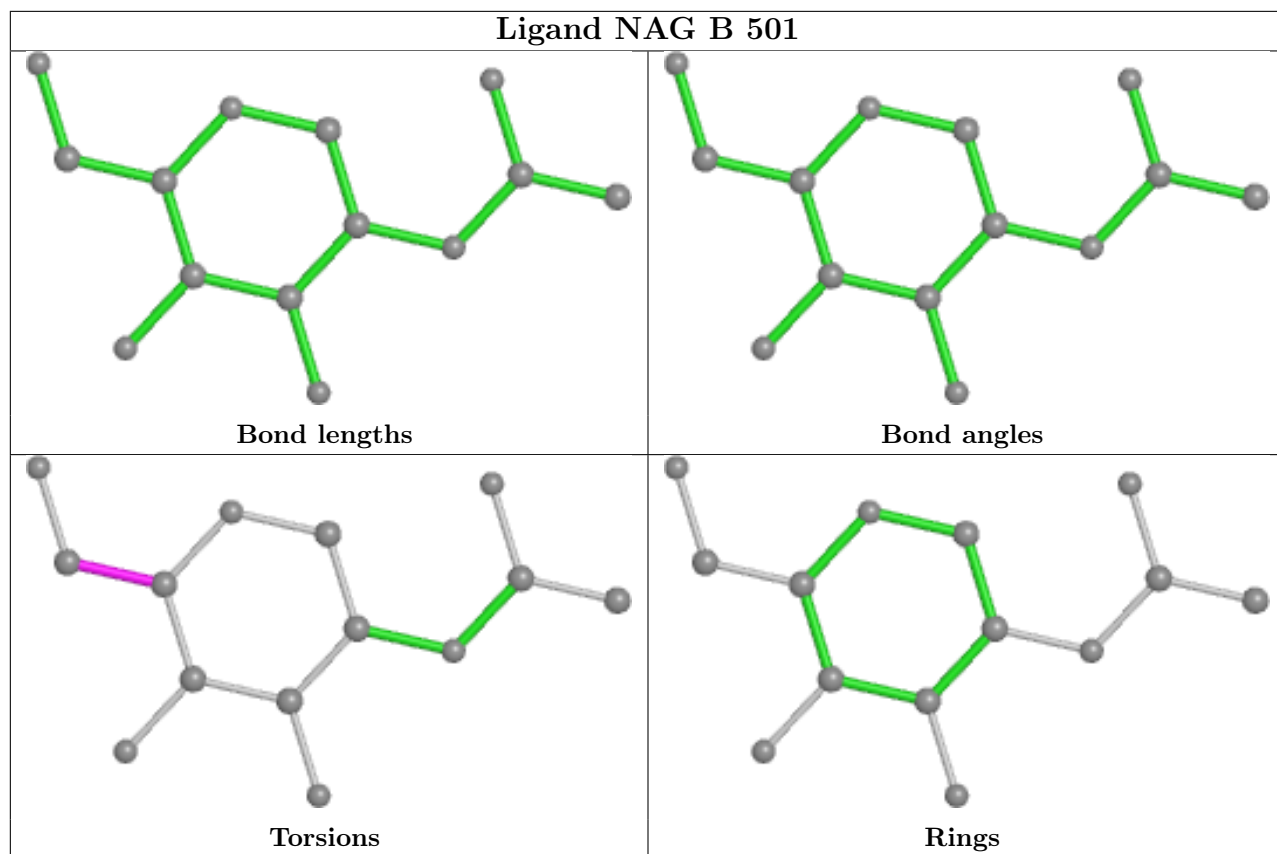
Mol	Chain	Res	Type	Clashes	Symm-Clashes
4	A	506	NAG	1	0
4	C	507	NAG	1	0

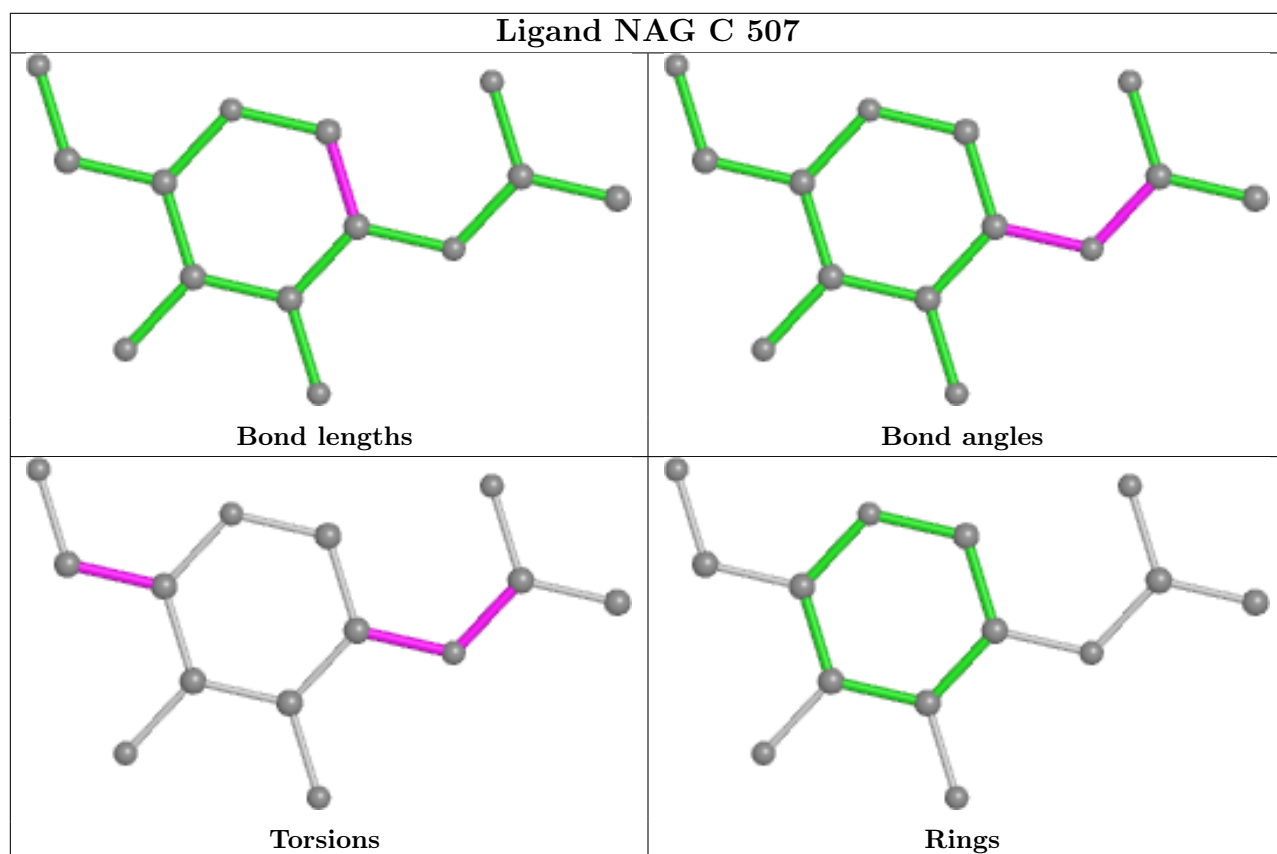
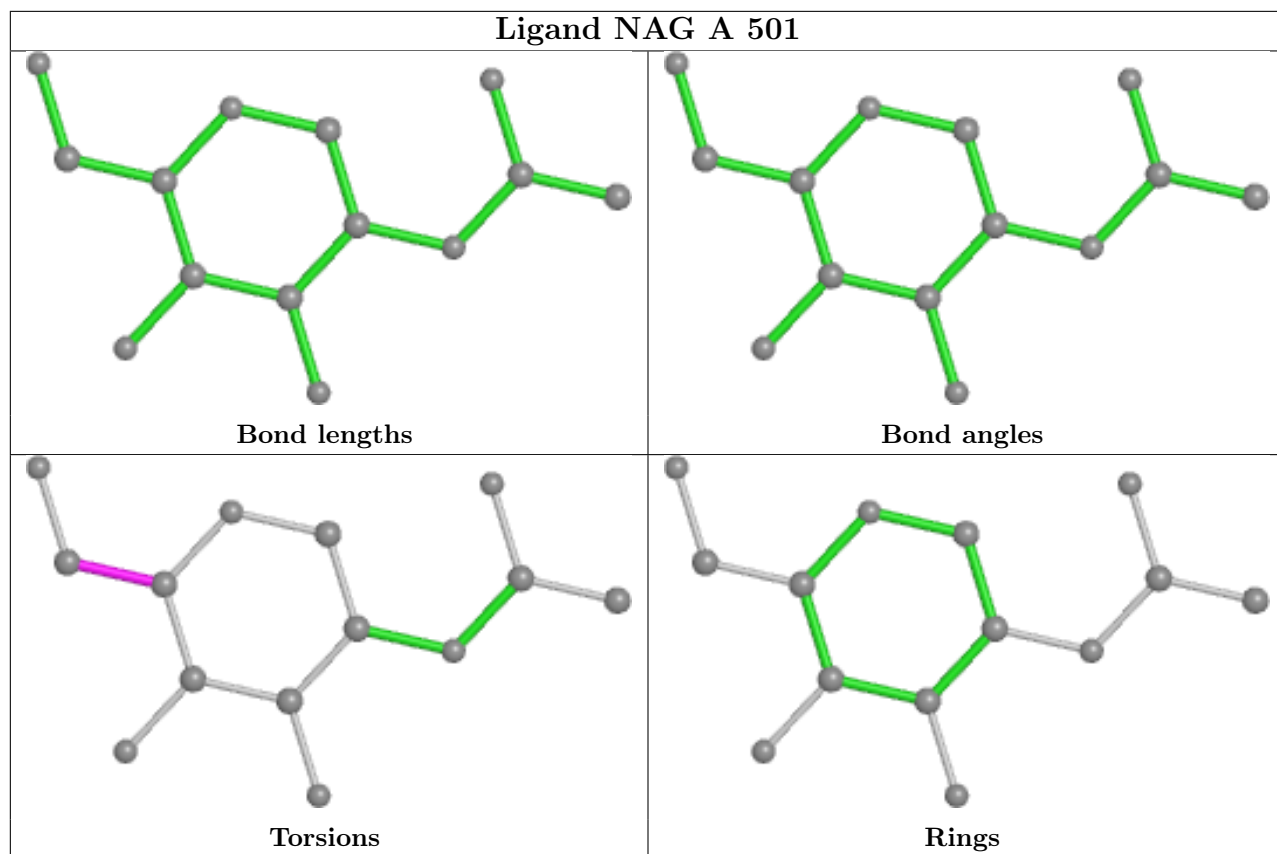
The following is a two-dimensional graphical depiction of Mogul quality analysis of bond lengths, bond angles, torsion angles, and ring geometry for all instances of the Ligand of Interest. In addition, ligands with molecular weight > 250 and outliers as shown on the validation Tables will also be included. For torsion angles, if less than 5% of the Mogul distribution of torsion angles is within 10 degrees of the torsion angle in question, then that torsion angle is considered an outlier. Any bond that is central to one or more torsion angles identified as an outlier by Mogul will be highlighted in the graph. For rings, the root-mean-square deviation (RMSD) between the ring in question and similar rings identified by Mogul is calculated over all ring torsion angles. If the average RMSD is greater than 60 degrees and the minimal RMSD between the ring in question and any Mogul-identified rings is also greater than 60 degrees, then that ring is considered an outlier. The outliers are highlighted in purple. The color gray indicates Mogul did not find sufficient equivalents in the CSD to analyse the geometry.

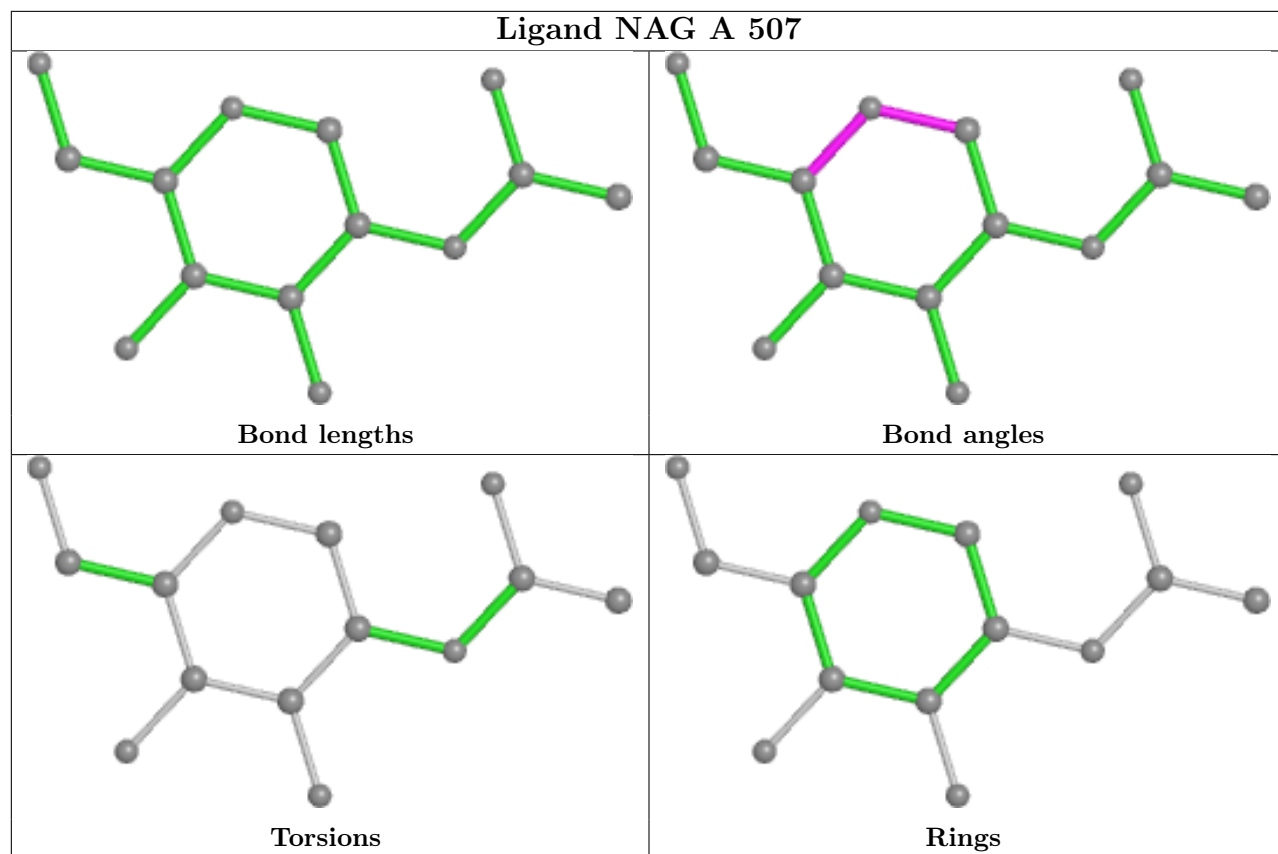












## 5.7 Other polymers [i](#)

There are no such residues in this entry.

## 5.8 Polymer linkage issues [i](#)

There are no chain breaks in this entry.



## 6 Fit of model and data

### 6.1 Protein, DNA and RNA chains

In the following table, the column labelled ‘#RSRZ > 2’ contains the number (and percentage) of RSRZ outliers, followed by percent RSRZ outliers for the chain as percentile scores relative to all X-ray entries and entries of similar resolution. The OWAB column contains the minimum, median, 95<sup>th</sup> percentile and maximum values of the occupancy-weighted average B-factor per residue. The column labelled ‘Q < 0.9’ lists the number of (and percentage) of residues with an average occupancy less than 0.9.

Mol	Chain	Analysed	<RSRZ>	#RSRZ>2	OWAB(Å <sup>2</sup> )	Q<0.9
1	A	395/397 (99%)	0.90	11 (2%) 53 55	42, 52, 75, 137	0
1	B	395/397 (99%)	0.93	14 (3%) 44 46	46, 56, 81, 134	0
1	C	395/397 (99%)	0.99	24 (6%) 21 21	46, 59, 87, 128	0
All	All	1185/1191 (99%)	0.94	49 (4%) 37 39	42, 56, 83, 137	0

All (49) RSRZ outliers are listed below:

Mol	Chain	Res	Type	RSRZ
1	C	101	GLN	8.0
1	A	100	ASP	7.5
1	C	100	ASP	6.7
1	B	98	ASN	5.1
1	C	98	ASN	4.7
1	A	101	GLN	4.3
1	B	100	ASP	4.3
1	A	98	ASN	4.3
1	B	101	GLN	3.6
1	B	396	GLN	3.4
1	C	54	GLY	3.4
1	B	21	GLU	3.3
1	B	96	VAL	3.3
1	C	48	VAL	3.1
1	C	99	GLY	3.0
1	B	99	GLY	2.9
1	C	69	LYS	2.6
1	B	52	VAL	2.6
1	B	233	ASN	2.6
1	C	60	LEU	2.5
1	C	374	ALA	2.5
1	C	52	VAL	2.4
1	C	102	VAL	2.4

*Continued on next page...*

*Continued from previous page...*

Mol	Chain	Res	Type	RSRZ
1	B	102	VAL	2.4
1	A	21	GLU	2.4
1	C	66	GLU	2.4
1	A	117	GLU	2.4
1	A	99	GLY	2.3
1	C	21	GLU	2.3
1	A	60	LEU	2.3
1	C	25	VAL	2.3
1	C	43	VAL	2.2
1	C	58	GLN	2.2
1	B	296	VAL	2.1
1	C	103	VAL	2.1
1	A	359	ALA	2.1
1	B	141	VAL	2.1
1	C	269	VAL	2.1
1	C	235	VAL	2.1
1	C	16	TRP	2.1
1	C	396	GLN	2.1
1	C	318	SER	2.1
1	A	165	ALA	2.1
1	C	72	VAL	2.0
1	A	3	ILE	2.0
1	C	320	PHE	2.0
1	A	296	VAL	2.0
1	B	308	ILE	2.0
1	B	117	GLU	2.0

## 6.2 Non-standard residues in protein, DNA, RNA chains [\(i\)](#)

In the following table, the Atoms column lists the number of modelled atoms in the group and the number defined in the chemical component dictionary. The B-factors column lists the minimum, median, 95<sup>th</sup> percentile and maximum values of B factors of atoms in the group. The column labelled 'Q< 0.9' lists the number of atoms with occupancy less than 0.9.

Mol	Type	Chain	Res	Atoms	RSCC	RSR	B-factors(Å <sup>2</sup> )	Q<0.9
1	PCA	A	1	8/9	0.98	0.22	43,52,60,61	0
1	PCA	C	1	8/9	0.98	0.28	56,68,74,77	0
1	PCA	B	1	8/9	0.99	0.23	45,50,52,54	0

### 6.3 Carbohydrates

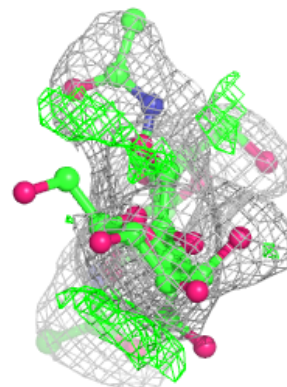
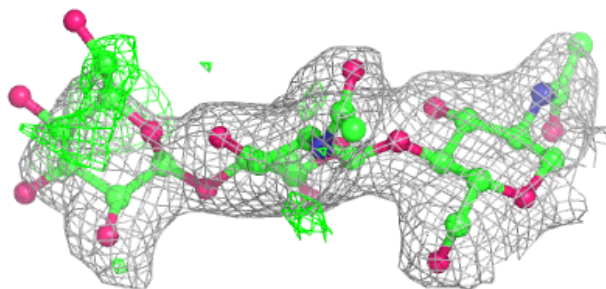
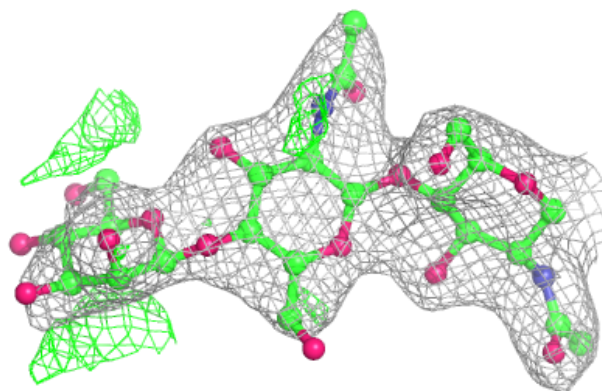
In the following table, the Atoms column lists the number of modelled atoms in the group and the number defined in the chemical component dictionary. The B-factors column lists the minimum, median, 95<sup>th</sup> percentile and maximum values of B factors of atoms in the group. The column labelled 'Q< 0.9' lists the number of atoms with occupancy less than 0.9.

Mol	Type	Chain	Res	Atoms	RSCC	RSR	B-factors(Å <sup>2</sup> )	Q<0.9
2	BMA	D	3	11/12	0.73	0.40	115,123,129,132	0
3	NAG	G	2	14/15	0.84	0.28	79,98,115,115	0
3	NAG	H	2	14/15	0.84	0.54	105,118,123,125	0
3	NAG	F	2	14/15	0.87	0.38	93,117,124,125	0
3	NAG	H	1	14/15	0.91	0.21	73,88,93,106	0
2	NAG	D	2	14/15	0.94	0.19	63,92,103,117	0
3	NAG	E	2	14/15	0.94	0.20	61,83,93,104	0
3	NAG	F	1	14/15	0.95	0.23	62,83,93,100	0
3	NAG	E	1	14/15	0.95	0.17	39,55,61,66	0
3	NAG	G	1	14/15	0.95	0.15	53,71,78,83	0
2	NAG	D	1	14/15	0.96	0.21	53,64,68,83	0

The following is a graphical depiction of the model fit to experimental electron density for oligosaccharide. Each fit is shown from different orientation to approximate a three-dimensional view.

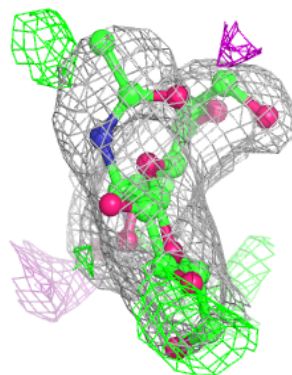
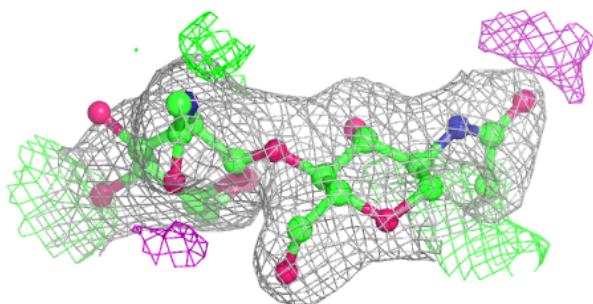
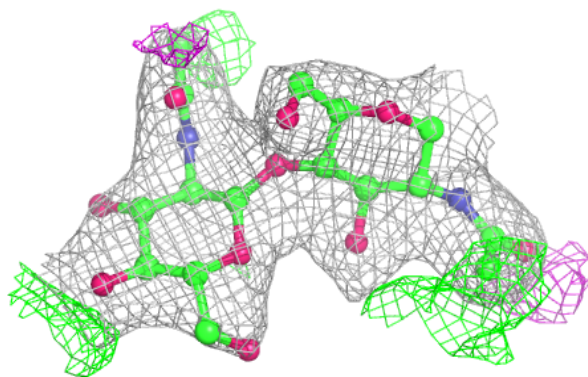
**Electron density around Chain D:**

$2mF_o-DF_c$  (at 0.7 rmsd) in gray  
 $mF_o-DF_c$  (at 3 rmsd) in purple (negative)  
and green (positive)

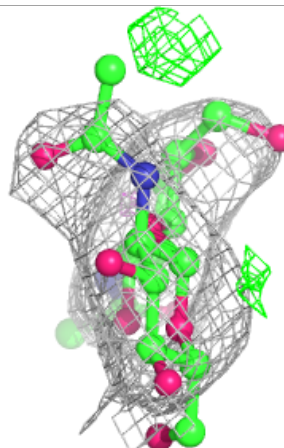
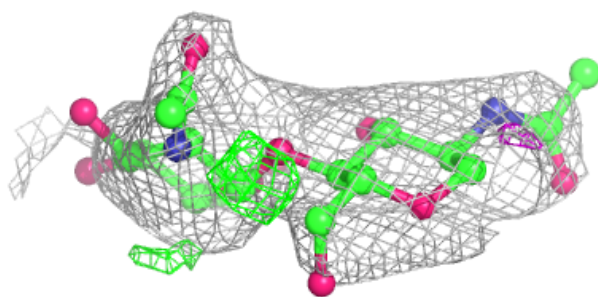
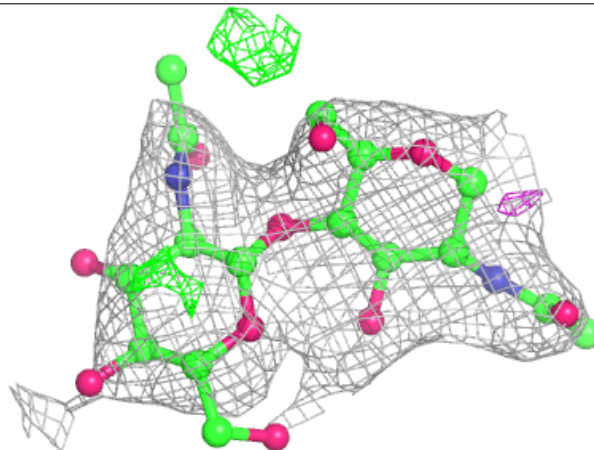


**Electron density around Chain E:**

$2mF_o-DF_c$  (at 0.7 rmsd) in gray  
 $mF_o-DF_c$  (at 3 rmsd) in purple (negative)  
and green (positive)

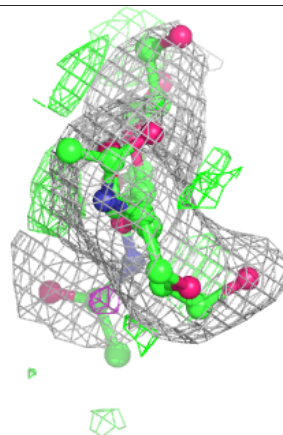
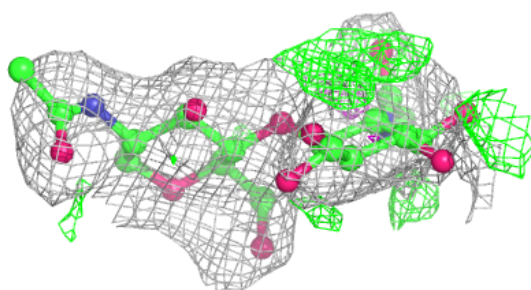
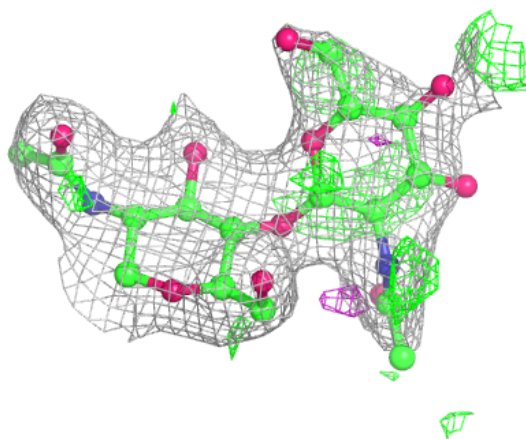
**Electron density around Chain F:**

$2mF_o-DF_c$  (at 0.7 rmsd) in gray  
 $mF_o-DF_c$  (at 3 rmsd) in purple (negative)  
and green (positive)

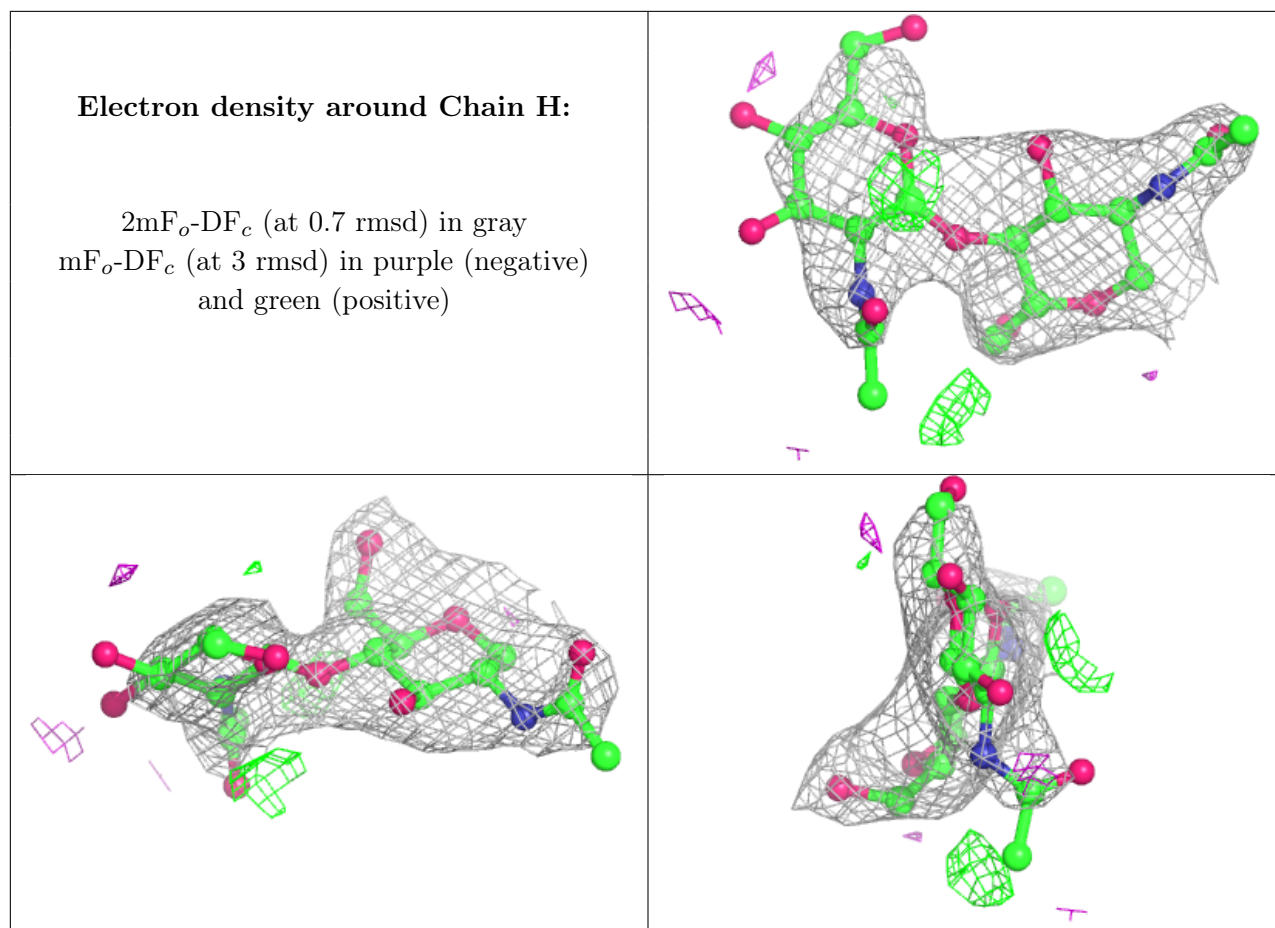


**Electron density around Chain G:**

$2mF_o-DF_c$  (at 0.7 rmsd) in gray  
 $mF_o-DF_c$  (at 3 rmsd) in purple (negative)  
and green (positive)





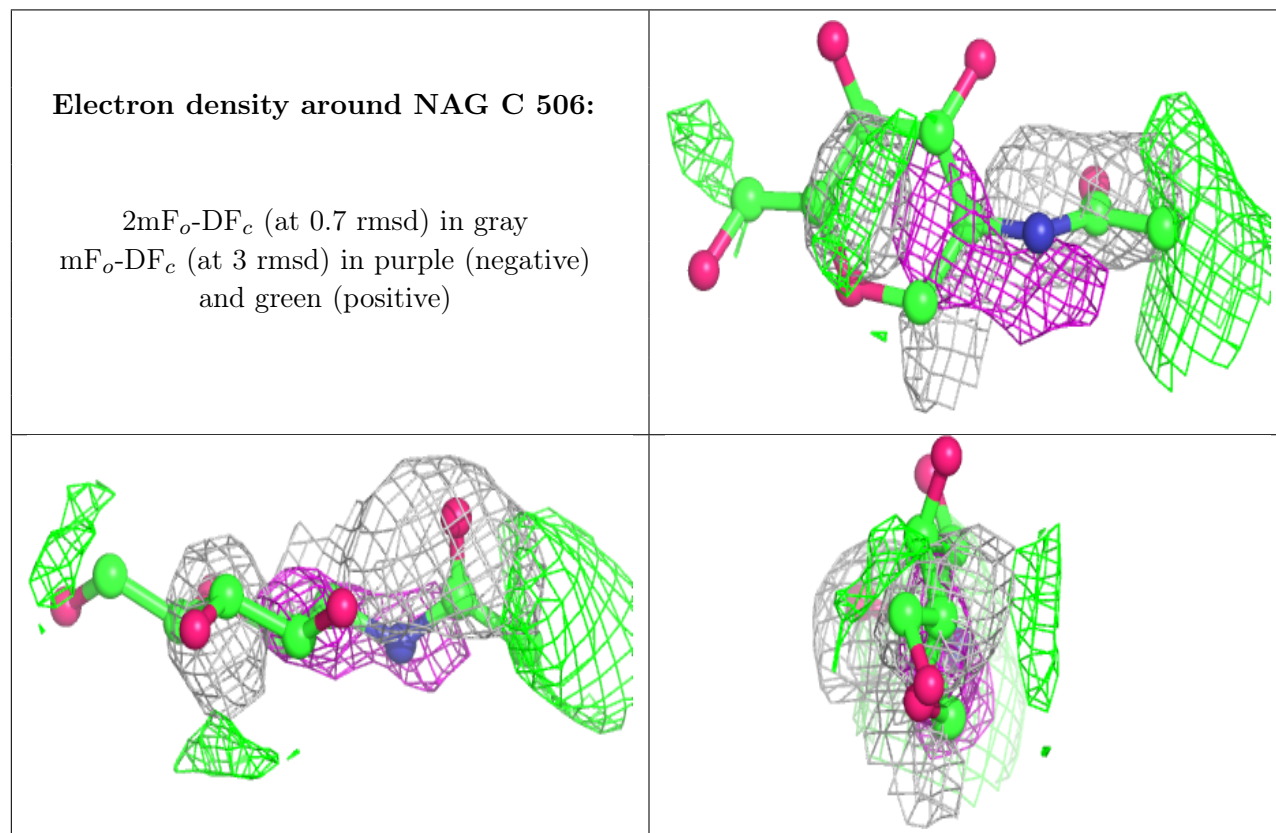


## 6.4 Ligands [i](#)

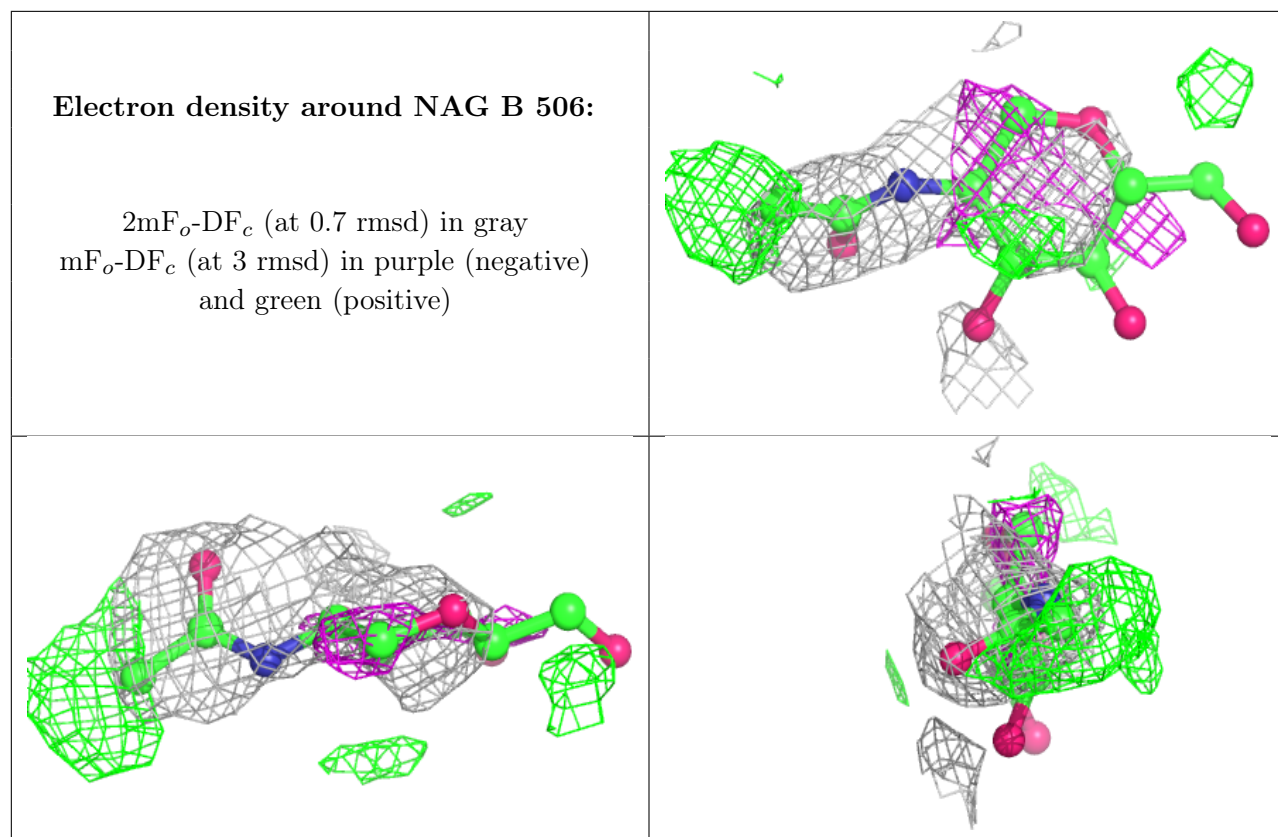
In the following table, the Atoms column lists the number of modelled atoms in the group and the number defined in the chemical component dictionary. The B-factors column lists the minimum, median, 95<sup>th</sup> percentile and maximum values of B factors of atoms in the group. The column labelled 'Q< 0.9' lists the number of atoms with occupancy less than 0.9.

Mol	Type	Chain	Res	Atoms	RSCC	RSR	B-factors(Å <sup>2</sup> )	Q<0.9
4	NAG	C	506	14/15	0.52	0.56	111,131,134,135	0
4	NAG	B	506	14/15	0.58	0.51	79,120,130,132	0
4	NAG	A	507	14/15	0.63	0.55	107,120,129,129	0
4	NAG	C	507	14/15	0.65	0.38	104,120,126,131	0
4	NAG	A	506	14/15	0.70	0.43	103,124,134,139	0
4	NAG	A	505	14/15	0.73	0.43	95,116,127,133	0
4	NAG	B	507	14/15	0.76	0.32	100,110,118,120	0
4	NAG	C	501	14/15	0.79	0.34	96,107,115,115	0
4	NAG	A	501	14/15	0.84	0.27	90,105,112,116	0
4	NAG	B	501	14/15	0.86	0.30	83,100,114,114	0
6	NA	C	508	1/1	0.95	0.48	102,102,102,102	0
5	MLI	A	508	7/7	0.96	0.21	52,56,70,71	0

The following is a graphical depiction of the model fit to experimental electron density of all instances of the Ligand of Interest. In addition, ligands with molecular weight > 250 and outliers as shown on the geometry validation Tables will also be included. Each fit is shown from different orientation to approximate a three-dimensional view.

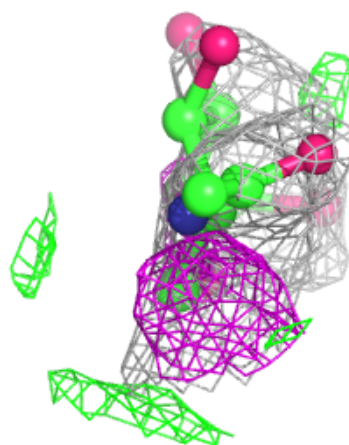
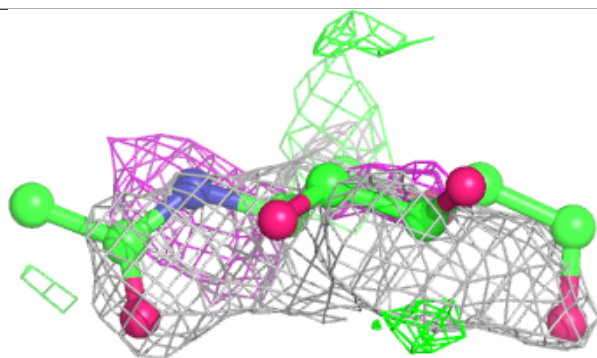
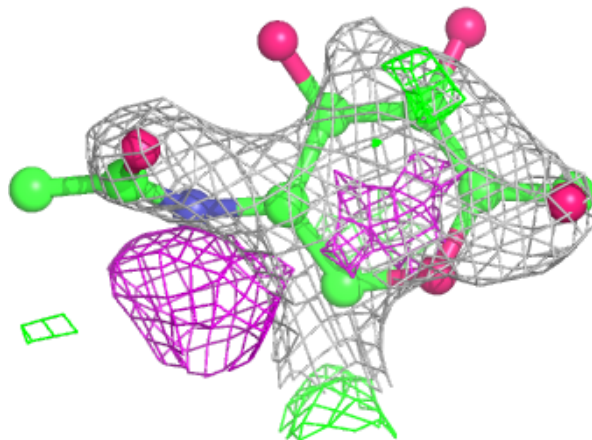






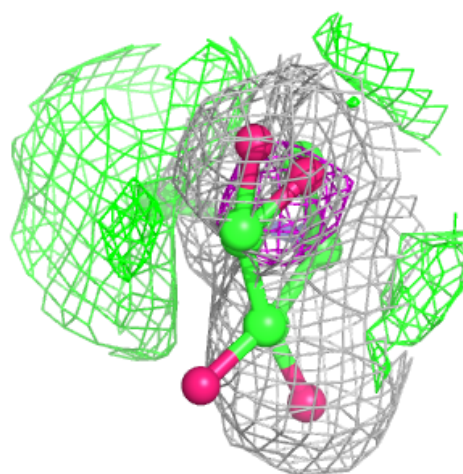
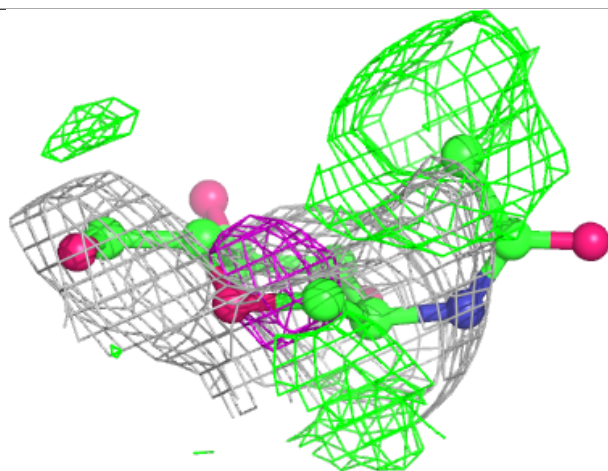
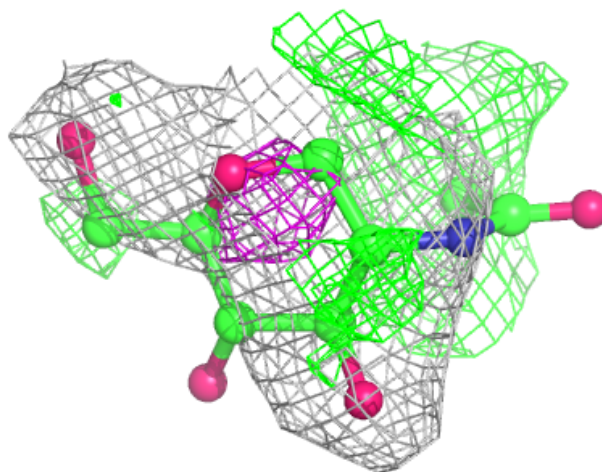
**Electron density around NAG A 507:**

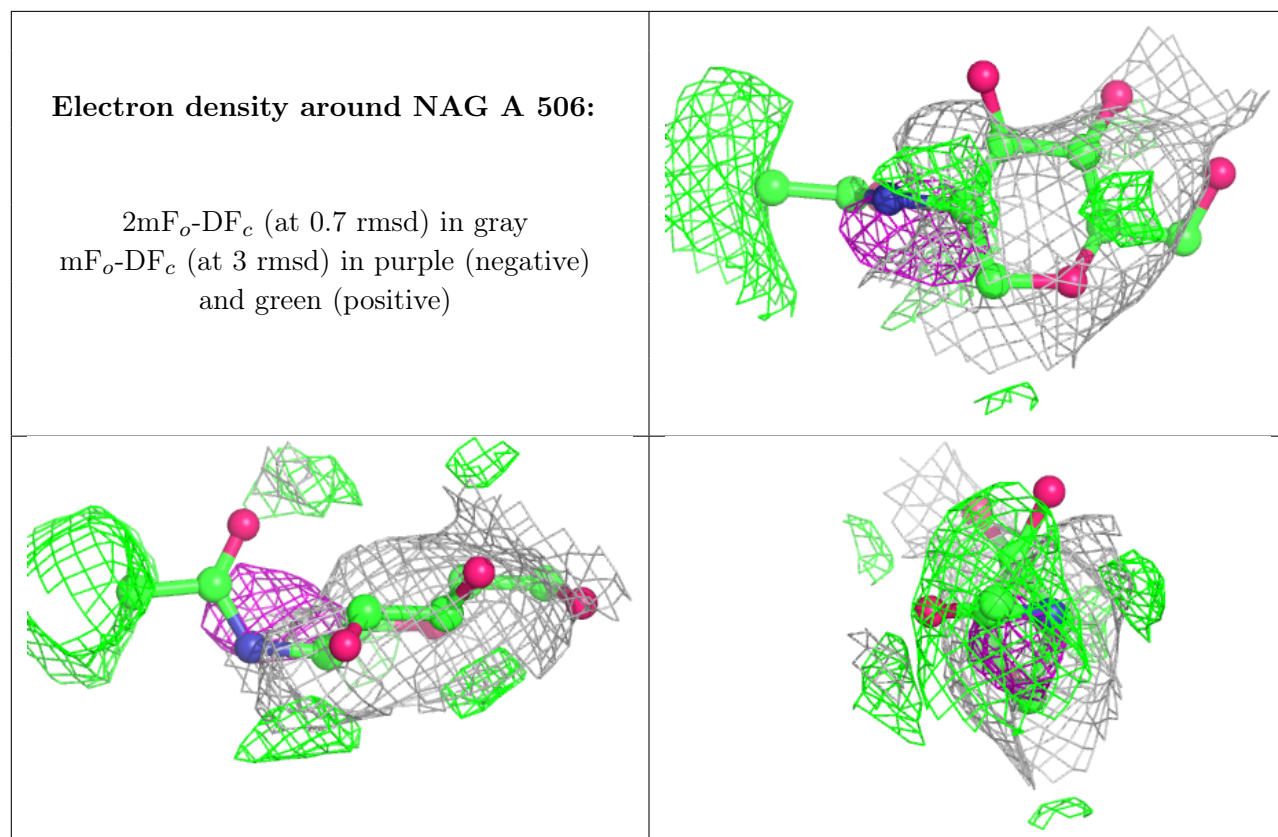
$2mF_o-DF_c$  (at 0.7 rmsd) in gray  
 $mF_o-DF_c$  (at 3 rmsd) in purple (negative)  
and green (positive)



**Electron density around NAG C 507:**

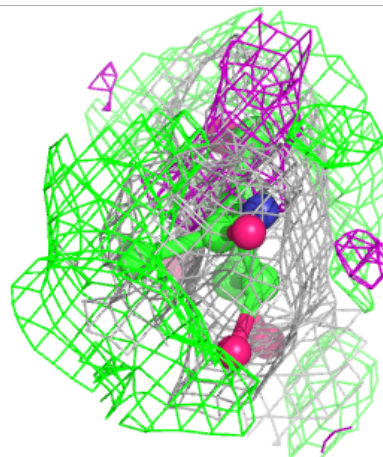
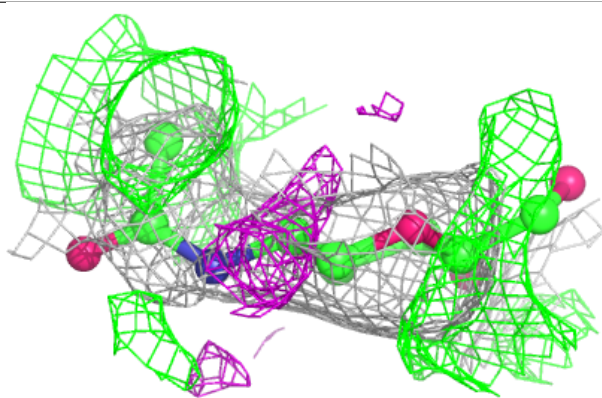
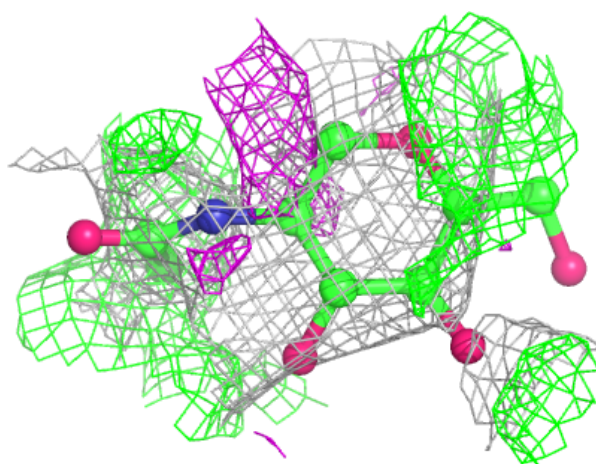
$2mF_o-DF_c$  (at 0.7 rmsd) in gray  
 $mF_o-DF_c$  (at 3 rmsd) in purple (negative)  
and green (positive)





**Electron density around NAG A 505:**

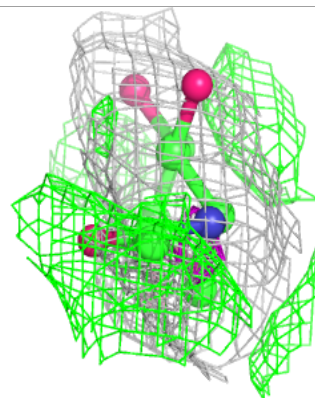
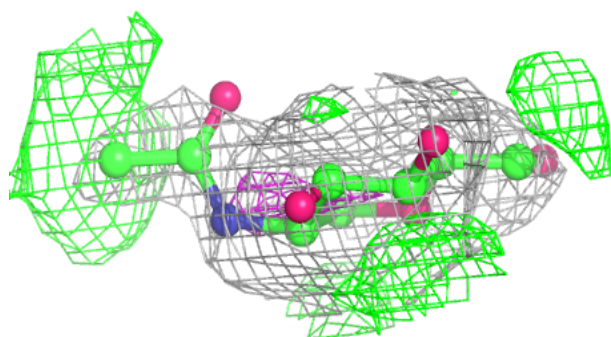
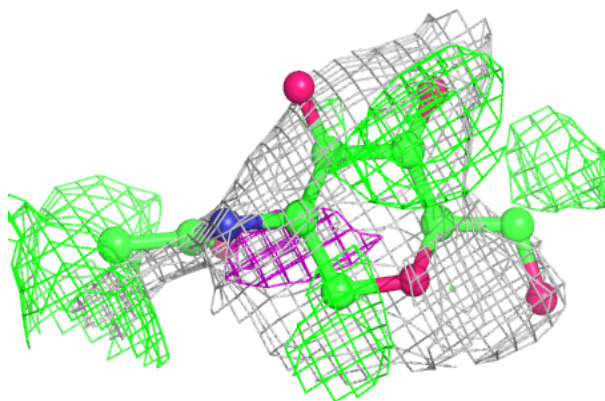
$2mF_o-DF_c$  (at 0.7 rmsd) in gray  
 $mF_o-DF_c$  (at 3 rmsd) in purple (negative)  
and green (positive)



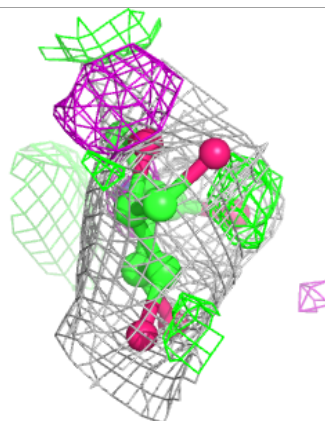
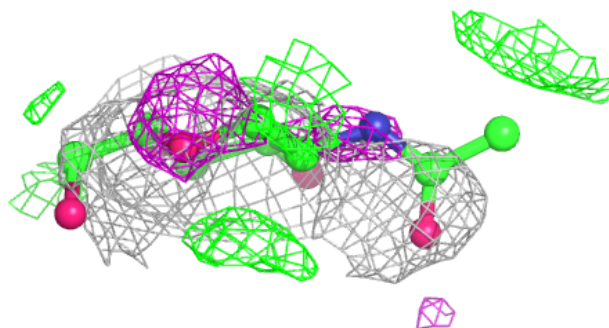
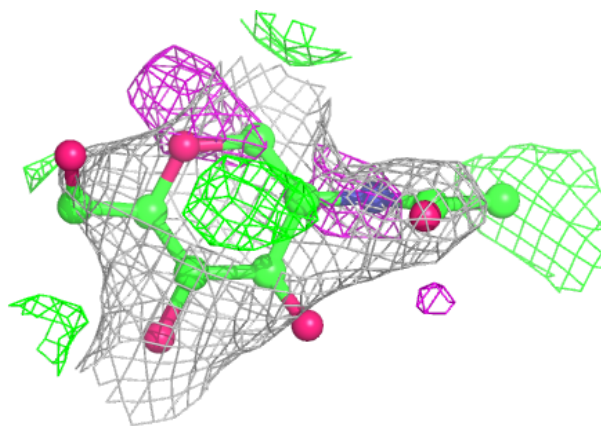


**Electron density around NAG B 507:**

$2mF_o-DF_c$  (at 0.7 rmsd) in gray  
 $mF_o-DF_c$  (at 3 rmsd) in purple (negative)  
and green (positive)

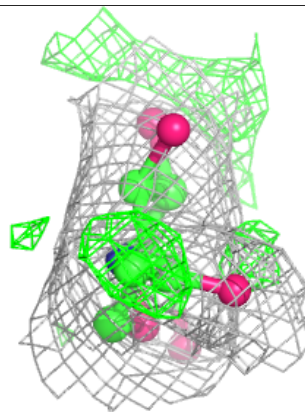
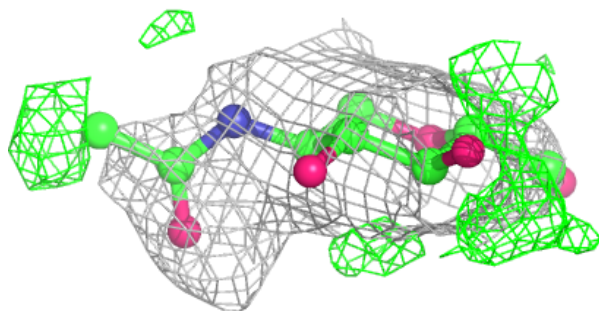
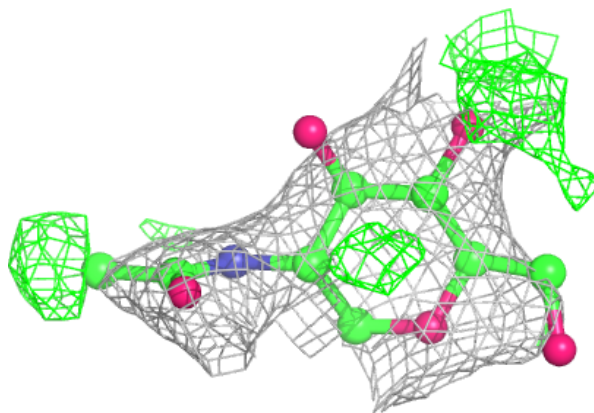
**Electron density around NAG C 501:**

$2mF_o-DF_c$  (at 0.7 rmsd) in gray  
 $mF_o-DF_c$  (at 3 rmsd) in purple (negative)  
and green (positive)

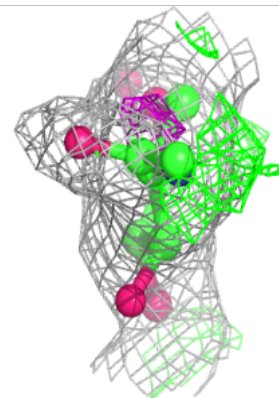
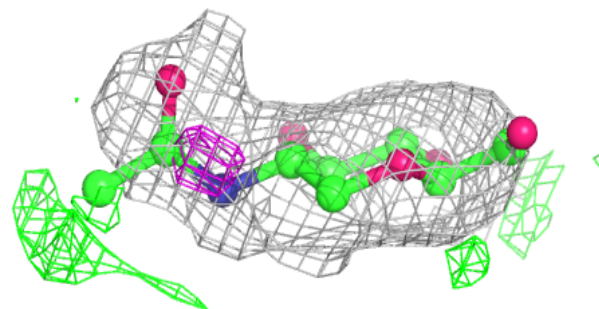
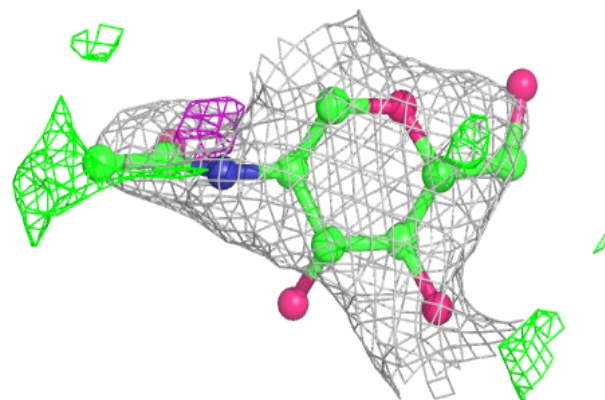


**Electron density around NAG A 501:**

$2mF_o-DF_c$  (at 0.7 rmsd) in gray  
 $mF_o-DF_c$  (at 3 rmsd) in purple (negative)  
and green (positive)

**Electron density around NAG B 501:**

$2mF_o-DF_c$  (at 0.7 rmsd) in gray  
 $mF_o-DF_c$  (at 3 rmsd) in purple (negative)  
and green (positive)



## 6.5 Other polymers [i](#)

There are no such residues in this entry.