



Full wwPDB X-ray Structure Validation Report ⓘ

May 8, 2024 – 04:04 PM EDT

PDB ID : 8SVP
Title : Crystal structure of pregnane X receptor ligand binding domain in complex with SJPYT-278
Authors : Garcia-Maldonado, E.; Huber, A.D.; Nithianantham, S.; Miller, D.J.; Chen, T.
Deposited on : 2023-05-17
Resolution : 3.32 Å(reported)

This is a Full wwPDB X-ray Structure Validation Report for a publicly released PDB entry.

We welcome your comments at validation@mail.wwpdb.org

A user guide is available at

<https://www.wwpdb.org/validation/2017/XrayValidationReportHelp>

with specific help available everywhere you see the ⓘ symbol.

The types of validation reports are described at

<http://www.wwpdb.org/validation/2017/FAQs#types>.

The following versions of software and data (see [references ⓘ](#)) were used in the production of this report:

MolProbity : 4.02b-467
Mogul : 1.8.5 (274361), CSD as541be (2020)
Xtriage (Phenix) : 1.13
EDS : 2.36.2
buster-report : 1.1.7 (2018)
Percentile statistics : 20191225.v01 (using entries in the PDB archive December 25th 2019)
Refmac : 5.8.0158
CCP4 : 7.0.044 (Gargrove)
Ideal geometry (proteins) : Engh & Huber (2001)
Ideal geometry (DNA, RNA) : Parkinson et al. (1996)
Validation Pipeline (wwPDB-VP) : 2.36.2

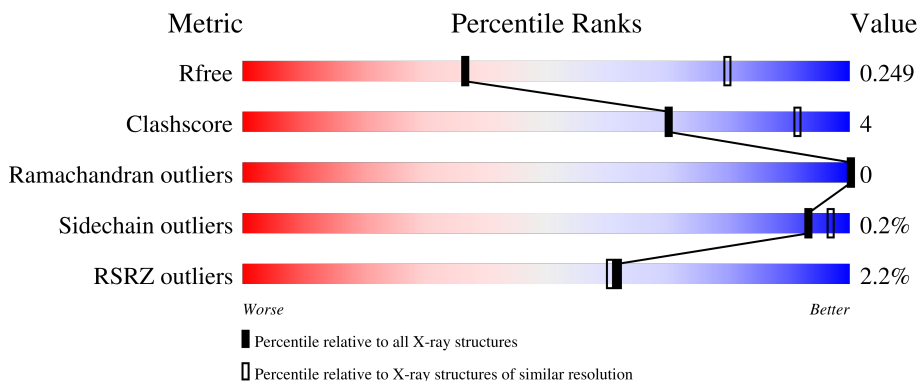
1 Overall quality at a glance

The following experimental techniques were used to determine the structure:

X-RAY DIFFRACTION

The reported resolution of this entry is 3.32 Å.

Percentile scores (ranging between 0-100) for global validation metrics of the entry are shown in the following graphic. The table shows the number of entries on which the scores are based.



Metric	Whole archive (#Entries)	Similar resolution (#Entries, resolution range(Å))
R_{free}	130704	1089 (3.36-3.28)
Clashscore	141614	1137 (3.36-3.28)
Ramachandran outliers	138981	1115 (3.36-3.28)
Sidechain outliers	138945	1114 (3.36-3.28)
RSRZ outliers	127900	1059 (3.36-3.28)

The table below summarises the geometric issues observed across the polymeric chains and their fit to the electron density. The red, orange, yellow and green segments of the lower bar indicate the fraction of residues that contain outliers for ≥ 3 , 2, 1 and 0 types of geometric quality criteria respectively. A grey segment represents the fraction of residues that are not modelled. The numeric value for each fraction is indicated below the corresponding segment, with a dot representing fractions $\leq 5\%$. The upper red bar (where present) indicates the fraction of residues that have poor fit to the electron density. The numeric value is given above the bar.

Mol	Chain	Length	Quality of chain
1	A	351	 2% 70% 8% 20%
1	B	351	 1% 67% 9% 24%

2 Entry composition i

There are 4 unique types of molecules in this entry. The entry contains 4408 atoms, of which 0 are hydrogens and 0 are deuteriums.

In the tables below, the ZeroOcc column contains the number of atoms modelled with zero occupancy, the AltConf column contains the number of residues with at least one atom in alternate conformation and the Trace column contains the number of residues modelled with at most 2 atoms.

- Molecule 1 is a protein called Pregnane X receptor ligand binding domain fused to SRC-1 coactivator peptide.

Mol	Chain	Residues	Atoms					ZeroOcc	AltConf	Trace
			Total	C	N	O	S			
1	A	273	Total	C	N	O	S	0	0	0
			2148	1381	368	381	18			
1	B	268	Total	C	N	O	S	0	0	0
			2110	1360	359	374	17			

There are 26 discrepancies between the modelled and reference sequences:

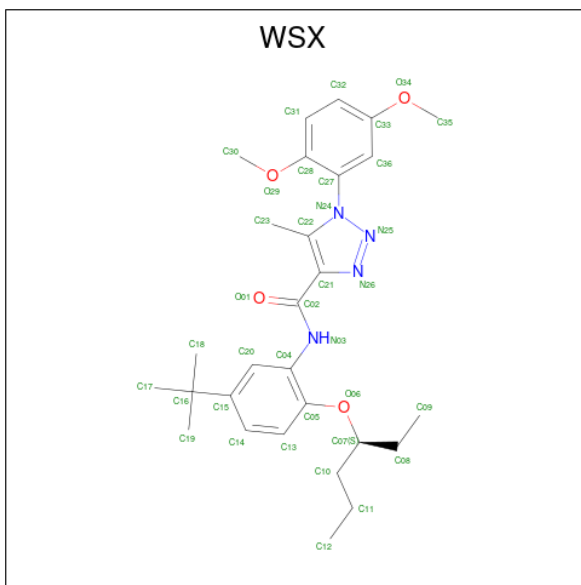
Chain	Residue	Modelled	Actual	Comment	Reference
A	123	HIS	-	expression tag	UNP O75469
A	124	HIS	-	expression tag	UNP O75469
A	125	HIS	-	expression tag	UNP O75469
A	126	HIS	-	expression tag	UNP O75469
A	127	HIS	-	expression tag	UNP O75469
A	128	HIS	-	expression tag	UNP O75469
A	129	GLY	-	expression tag	UNP O75469
A	435	SER	-	linker	UNP O75469
A	436	GLY	-	linker	UNP O75469
A	437	GLY	-	linker	UNP O75469
A	438	SER	-	linker	UNP O75469
A	439	GLY	-	linker	UNP O75469
A	440	GLY	-	linker	UNP O75469
B	123	HIS	-	expression tag	UNP O75469
B	124	HIS	-	expression tag	UNP O75469
B	125	HIS	-	expression tag	UNP O75469
B	126	HIS	-	expression tag	UNP O75469
B	127	HIS	-	expression tag	UNP O75469
B	128	HIS	-	expression tag	UNP O75469
B	129	GLY	-	expression tag	UNP O75469
B	435	SER	-	linker	UNP O75469
B	436	GLY	-	linker	UNP O75469
B	437	GLY	-	linker	UNP O75469
B	438	SER	-	linker	UNP O75469

Continued on next page...

Continued from previous page...

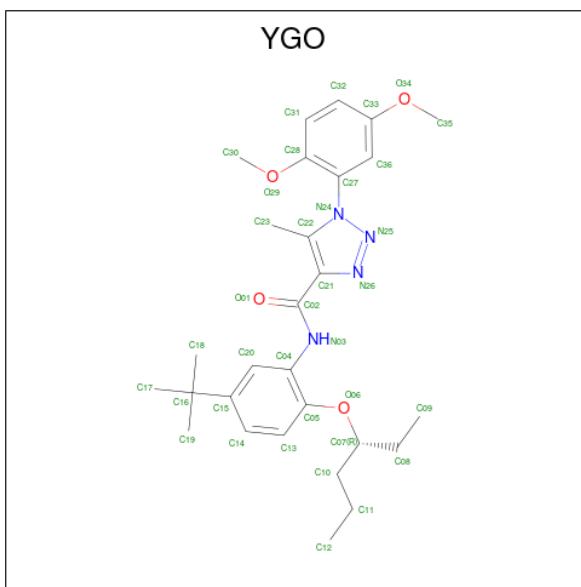
Chain	Residue	Modelled	Actual	Comment	Reference
B	439	GLY	-	linker	UNP O75469
B	440	GLY	-	linker	UNP O75469

- Molecule 2 is (1P)-N-(5-tert-butyl-2-[[[(3S)-hexan-3-yl]oxy]phenyl]-1-(2,5-dimethoxyphenyl)-5-methyl-1H-1,2,3-triazole-4-carboxamide (three-letter code: WSX) (formula: C₂₈H₃₈N₄O₄) (labeled as "Ligand of Interest" by depositor).



Mol	Chain	Residues	Atoms				ZeroOcc	AltConf
			Total	C	N	O		
2	A	1	36	28	4	4	0	1
2	B	1	36	28	4	4	0	1

- Molecule 3 is (1P)-N-(5-tert-butyl-2-[[[(3R)-hexan-3-yl]oxy]phenyl]-1-(2,5-dimethoxyphenyl)-5-methyl-1H-1,2,3-triazole-4-carboxamide (three-letter code: YGO) (formula: C₂₈H₃₈N₄O₄) (labeled as "Ligand of Interest" by depositor).



Mol	Chain	Residues	Atoms			ZeroOcc	AltConf	
			Total	C	N			O
3	A	1	36	28	4	4	0	1
3	B	1	36	28	4	4	0	1

- Molecule 4 is water.

Mol	Chain	Residues	Atoms		ZeroOcc	AltConf
			Total	O		
4	A	2	2	2	0	0
4	B	4	4	4	0	0

4 Data and refinement statistics i

Property	Value	Source
Space group	P 21 21 21	Depositor
Cell constants a, b, c, α , β , γ	85.04Å 87.35Å 106.27Å 90.00° 90.00° 90.00°	Depositor
Resolution (Å)	29.29 – 3.32 29.29 – 3.32	Depositor EDS
% Data completeness (in resolution range)	99.1 (29.29-3.32) 99.1 (29.29-3.32)	Depositor EDS
R_{merge}	0.14	Depositor
R_{sym}	(Not available)	Depositor
$\langle I/\sigma(I) \rangle$ ¹	2.12 (at 3.31Å)	Xtrriage
Refinement program	PHENIX (1.20.1_4487)	Depositor
R, R_{free}	0.219 , 0.252 0.220 , 0.249	Depositor DCC
R_{free} test set	611 reflections (5.07%)	wwPDB-VP
Wilson B-factor (Å ²)	88.5	Xtrriage
Anisotropy	0.650	Xtrriage
Bulk solvent k_{sol} (e/Å ³), B_{sol} (Å ²)	0.30 , 54.5	EDS
L-test for twinning ²	$\langle L \rangle = 0.49$, $\langle L^2 \rangle = 0.32$	Xtrriage
Estimated twinning fraction	0.010 for k,h,-l	Xtrriage
F_o, F_c correlation	0.92	EDS
Total number of atoms	4408	wwPDB-VP
Average B, all atoms (Å ²)	88.0	wwPDB-VP

Xtrriage's analysis on translational NCS is as follows: *The largest off-origin peak in the Patterson function is 4.17% of the height of the origin peak. No significant pseudotranslation is detected.*

¹Intensities estimated from amplitudes.

²Theoretical values of $\langle |L| \rangle$, $\langle L^2 \rangle$ for acentric reflections are 0.5, 0.333 respectively for untwinned datasets, and 0.375, 0.2 for perfectly twinned datasets.

5 Model quality

5.1 Standard geometry

Bond lengths and bond angles in the following residue types are not validated in this section: WSX, YGO

The Z score for a bond length (or angle) is the number of standard deviations the observed value is removed from the expected value. A bond length (or angle) with $|Z| > 5$ is considered an outlier worth inspection. RMSZ is the root-mean-square of all Z scores of the bond lengths (or angles).

Mol	Chain	Bond lengths		Bond angles	
		RMSZ	# Z >5	RMSZ	# Z >5
1	A	0.24	0/2193	0.43	0/2965
1	B	0.24	0/2155	0.42	0/2912
All	All	0.24	0/4348	0.42	0/5877

There are no bond length outliers.

There are no bond angle outliers.

There are no chirality outliers.

There are no planarity outliers.

5.2 Too-close contacts

In the following table, the Non-H and H(model) columns list the number of non-hydrogen atoms and hydrogen atoms in the chain respectively. The H(added) column lists the number of hydrogen atoms added and optimized by MolProbity. The Clashes column lists the number of clashes within the asymmetric unit, whereas Symm-Clashes lists symmetry-related clashes.

Mol	Chain	Non-H	H(model)	H(added)	Clashes	Symm-Clashes
1	A	2148	0	2075	14	0
1	B	2110	0	2051	18	0
2	A	36	0	0	0	0
2	B	36	0	0	0	0
3	A	36	0	0	0	0
3	B	36	0	0	0	0
4	A	2	0	0	0	0
4	B	4	0	0	0	0
All	All	4408	0	4126	31	0

The all-atom clashscore is defined as the number of clashes found per 1000 atoms (including hydrogen atoms). The all-atom clashscore for this structure is 4.

All (31) close contacts within the same asymmetric unit are listed below, sorted by their clash magnitude.

Atom-1	Atom-2	Interatomic distance (Å)	Clash overlap (Å)
1:B:142:GLY:N	1:B:379:CYS:HG	1.65	0.94
1:B:237:PHE:HA	1:B:240:LEU:HD13	1.82	0.61
1:B:279:ALA:HB1	1:B:283:LEU:HD13	1.86	0.58
1:A:254:ILE:HD12	1:A:283:LEU:HB3	1.87	0.56
1:A:206:LEU:HD13	1:A:236:ILE:HB	1.89	0.54
1:B:216:ARG:HG2	1:B:222:VAL:HG22	1.89	0.54
1:A:279:ALA:HB1	1:A:283:LEU:HD13	1.90	0.53
1:B:273:ILE:HG23	1:B:453:LEU:HD23	1.90	0.53
1:A:221:SER:HB3	1:B:228:PRO:HD3	1.90	0.52
1:A:405:ALA:O	1:A:409:GLN:HG2	2.11	0.51
1:B:254:ILE:HD12	1:B:283:LEU:HB3	1.93	0.50
1:A:216:ARG:HG2	1:A:222:VAL:HG22	1.94	0.48
1:A:412:LEU:HD21	1:A:429:PHE:HB3	1.94	0.48
1:B:143:LEU:HB2	1:B:148:ARG:HG3	1.94	0.48
1:B:214:GLN:HB3	1:B:305:SER:HB2	1.95	0.48
1:B:384:PRO:HA	1:B:387:ARG:HG3	1.97	0.47
1:A:281:PHE:O	1:A:285:GLN:HG2	2.15	0.47
1:B:392:LYS:O	1:B:396:MET:HG2	2.17	0.44
1:B:146:GLU:O	1:B:150:MET:N	2.47	0.43
1:A:382:PRO:HD2	1:A:386:HIS:CE1	2.53	0.43
1:A:406:GLN:O	1:A:410:ARG:HG3	2.18	0.43
1:B:281:PHE:O	1:B:285:GLN:HG2	2.19	0.43
1:B:412:LEU:HD21	1:B:429:PHE:HB3	2.01	0.42
1:A:259:LYS:HD2	1:A:457:LEU:HA	2.01	0.42
1:A:214:GLN:HB3	1:A:305:SER:HB2	2.00	0.42
1:B:278:GLY:HA3	1:B:353:ARG:HD2	2.01	0.42
1:B:352:ASP:OD1	1:B:352:ASP:N	2.51	0.42
1:B:211:VAL:HG12	1:B:308:LEU:HD23	2.02	0.42
1:A:373:LEU:HD21	1:A:393:ILE:HG21	2.03	0.40
1:B:250:MET:HG3	1:B:288:PHE:CZ	2.57	0.40
1:A:299:TRP:HZ3	1:A:308:LEU:HD23	1.87	0.40

There are no symmetry-related clashes.

5.3 Torsion angles [i](#)

5.3.1 Protein backbone [i](#)

In the following table, the Percentiles column shows the percent Ramachandran outliers of the chain as a percentile score with respect to all X-ray entries followed by that with respect to entries of similar resolution.

The Analysed column shows the number of residues for which the backbone conformation was analysed, and the total number of residues.

Mol	Chain	Analysed	Favoured	Allowed	Outliers	Percentiles	
1	A	263/351 (75%)	256 (97%)	7 (3%)	0	100	100
1	B	258/351 (74%)	250 (97%)	8 (3%)	0	100	100
All	All	521/702 (74%)	506 (97%)	15 (3%)	0	100	100

There are no Ramachandran outliers to report.

5.3.2 Protein sidechains [i](#)

In the following table, the Percentiles column shows the percent sidechain outliers of the chain as a percentile score with respect to all X-ray entries followed by that with respect to entries of similar resolution.

The Analysed column shows the number of residues for which the sidechain conformation was analysed, and the total number of residues.

Mol	Chain	Analysed	Rotameric	Outliers	Percentiles	
1	A	224/310 (72%)	223 (100%)	1 (0%)	91	95
1	B	222/310 (72%)	222 (100%)	0	100	100
All	All	446/620 (72%)	445 (100%)	1 (0%)	93	97

All (1) residues with a non-rotameric sidechain are listed below:

Mol	Chain	Res	Type
1	A	208	SER

Sometimes sidechains can be flipped to improve hydrogen bonding and reduce clashes. All (4) such sidechains are listed below:

Mol	Chain	Res	Type
1	A	214	GLN
1	A	334	GLN

Continued on next page...

Continued from previous page...

Mol	Chain	Res	Type
1	A	454	HIS
1	B	334	GLN

5.3.3 RNA [i](#)

There are no RNA molecules in this entry.

5.4 Non-standard residues in protein, DNA, RNA chains [i](#)

There are no non-standard protein/DNA/RNA residues in this entry.

5.5 Carbohydrates [i](#)

There are no monosaccharides in this entry.

5.6 Ligand geometry [i](#)

4 ligands are modelled in this entry.

In the following table, the Counts columns list the number of bonds (or angles) for which Mogul statistics could be retrieved, the number of bonds (or angles) that are observed in the model and the number of bonds (or angles) that are defined in the Chemical Component Dictionary. The Link column lists molecule types, if any, to which the group is linked. The Z score for a bond length (or angle) is the number of standard deviations the observed value is removed from the expected value. A bond length (or angle) with $|Z| > 2$ is considered an outlier worth inspection. RMSZ is the root-mean-square of all Z scores of the bond lengths (or angles).

Mol	Type	Chain	Res	Link	Bond lengths			Bond angles		
					Counts	RMSZ	# Z > 2	Counts	RMSZ	# Z > 2
3	YGO	B	502[B]	-	34,38,38	1.62	4 (11%)	49,54,54	2.04	7 (14%)
2	WSX	A	501[A]	-	34,38,38	1.14	3 (8%)	49,54,54	1.62	9 (18%)
3	YGO	A	502[B]	-	34,38,38	1.61	4 (11%)	49,54,54	2.05	8 (16%)
2	WSX	B	501[A]	-	34,38,38	1.19	4 (11%)	49,54,54	1.41	5 (10%)

In the following table, the Chirals column lists the number of chiral outliers, the number of chiral centers analysed, the number of these observed in the model and the number defined in the Chemical Component Dictionary. Similar counts are reported in the Torsion and Rings columns. '-' means no outliers of that kind were identified.

Mol	Type	Chain	Res	Link	Chirals	Torsions	Rings
3	YGO	B	502[B]	-	-	11/28/31/31	0/3/3/3
2	WSX	A	501[A]	-	-	8/28/31/31	0/3/3/3
3	YGO	A	502[B]	-	-	9/28/31/31	0/3/3/3
2	WSX	B	501[A]	-	-	9/28/31/31	0/3/3/3

All (15) bond length outliers are listed below:

Mol	Chain	Res	Type	Atoms	Z	Observed(Å)	Ideal(Å)
3	B	502[B]	YGO	C04-N03	4.08	1.49	1.41
3	A	502[B]	YGO	C04-N03	4.07	1.49	1.41
2	A	501[A]	WSX	C02-N03	3.95	1.46	1.35
2	B	501[A]	WSX	C02-N03	3.93	1.46	1.35
3	B	502[B]	YGO	C02-N03	3.79	1.45	1.35
3	A	502[B]	YGO	C02-N03	3.75	1.45	1.35
3	A	502[B]	YGO	C21-N26	3.04	1.43	1.36
3	B	502[B]	YGO	C21-N26	3.00	1.43	1.36
2	B	501[A]	WSX	C04-N03	2.50	1.46	1.41
2	A	501[A]	WSX	C04-N03	2.41	1.46	1.41
2	A	501[A]	WSX	O01-C02	-2.32	1.18	1.23
2	B	501[A]	WSX	O01-C02	-2.20	1.18	1.23
2	B	501[A]	WSX	O29-C28	2.18	1.40	1.37
3	A	502[B]	YGO	C20-C15	2.11	1.42	1.39
3	B	502[B]	YGO	C20-C15	2.06	1.42	1.39

All (29) bond angle outliers are listed below:

Mol	Chain	Res	Type	Atoms	Z	Observed(°)	Ideal(°)
3	A	502[B]	YGO	O06-C05-C04	7.40	122.39	114.63
3	A	502[B]	YGO	C22-C21-N26	-7.16	103.29	107.96
3	B	502[B]	YGO	O06-C05-C04	7.14	122.12	114.63
3	B	502[B]	YGO	C22-C21-N26	-6.99	103.40	107.96
2	A	501[A]	WSX	O06-C05-C04	6.41	121.36	114.63
3	A	502[B]	YGO	C21-N26-N25	5.43	113.56	107.08
3	B	502[B]	YGO	C21-N26-N25	5.36	113.48	107.08
2	B	501[A]	WSX	O06-C05-C04	5.09	119.97	114.63
2	B	501[A]	WSX	C27-N24-N25	4.07	126.47	119.95
2	A	501[A]	WSX	C27-N24-N25	3.75	125.96	119.95
3	B	502[B]	YGO	C04-C20-C15	3.65	126.15	120.56
2	A	501[A]	WSX	C22-C21-C02	-3.46	124.54	131.18
3	A	502[B]	YGO	C04-C20-C15	3.31	125.63	120.56
3	B	502[B]	YGO	O29-C28-C27	3.19	121.84	118.47
3	A	502[B]	YGO	O29-C28-C27	3.09	121.73	118.47

Continued on next page...

Continued from previous page...

Mol	Chain	Res	Type	Atoms	Z	Observed(°)	Ideal(°)
3	B	502[B]	YGO	O01-C02-C21	-3.03	116.06	120.59
2	B	501[A]	WSX	C22-N24-N25	-2.78	108.00	112.40
3	A	502[B]	YGO	O01-C02-C21	-2.76	116.47	120.59
2	A	501[A]	WSX	C22-N24-N25	-2.60	108.28	112.40
3	B	502[B]	YGO	O29-C28-C31	-2.42	120.22	124.37
2	A	501[A]	WSX	O06-C05-C13	-2.38	118.27	123.87
3	A	502[B]	YGO	O29-C28-C31	-2.38	120.30	124.37
2	A	501[A]	WSX	C02-C21-N26	2.36	126.48	120.57
2	A	501[A]	WSX	C30-O29-C28	-2.32	114.03	117.53
2	B	501[A]	WSX	O29-C28-C31	-2.31	120.40	124.37
2	A	501[A]	WSX	O29-C28-C31	-2.30	120.43	124.37
2	B	501[A]	WSX	C35-O34-C33	-2.20	112.74	117.51
2	A	501[A]	WSX	C28-C27-N24	2.09	119.86	117.87
3	A	502[B]	YGO	C28-C27-N24	2.07	119.84	117.87

There are no chirality outliers.

All (37) torsion outliers are listed below:

Mol	Chain	Res	Type	Atoms
2	A	501[A]	WSX	C04-C05-O06-C07
2	B	501[A]	WSX	O06-C07-C10-C11
2	B	501[A]	WSX	C04-C05-O06-C07
3	A	502[B]	YGO	C04-C05-O06-C07
3	A	502[B]	YGO	O06-C07-C10-C11
3	B	502[B]	YGO	O06-C07-C10-C11
3	B	502[B]	YGO	C08-C07-O06-C05
2	A	501[A]	WSX	C36-C33-O34-C35
3	A	502[B]	YGO	C32-C33-O34-C35
2	A	501[A]	WSX	C32-C33-O34-C35
3	A	502[B]	YGO	C36-C33-O34-C35
3	B	502[B]	YGO	C36-C33-O34-C35
2	B	501[A]	WSX	C32-C33-O34-C35
2	B	501[A]	WSX	C36-C33-O34-C35
3	B	502[B]	YGO	C32-C33-O34-C35
2	A	501[A]	WSX	C10-C07-C08-C09
2	A	501[A]	WSX	O06-C07-C08-C09
2	B	501[A]	WSX	C08-C07-C10-C11
3	A	502[B]	YGO	C08-C07-C10-C11
3	B	502[B]	YGO	C04-C05-O06-C07
3	B	502[B]	YGO	C10-C07-C08-C09
3	B	502[B]	YGO	C08-C07-C10-C11
2	B	501[A]	WSX	C07-C10-C11-C12

Continued on next page...

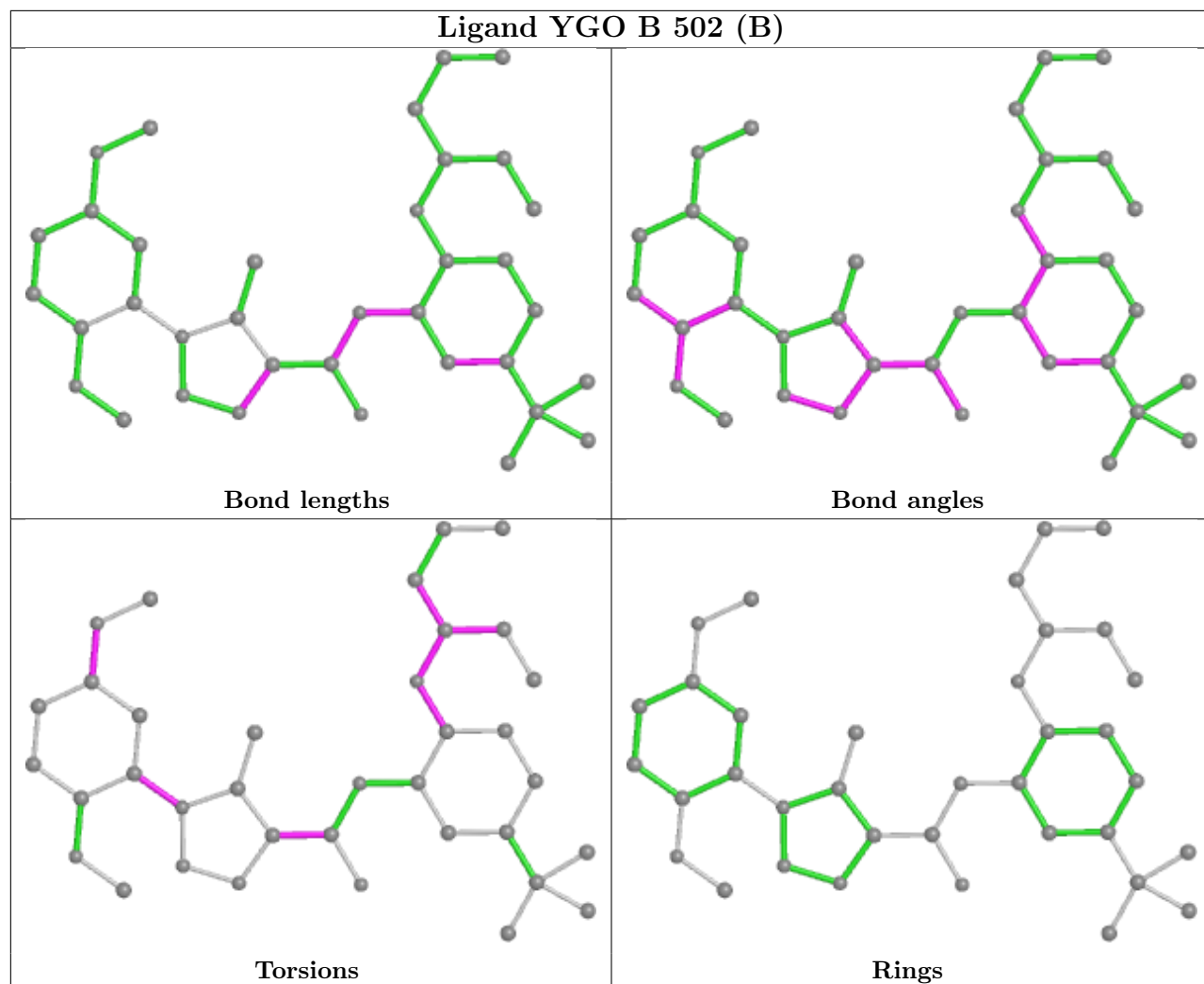
Continued from previous page...

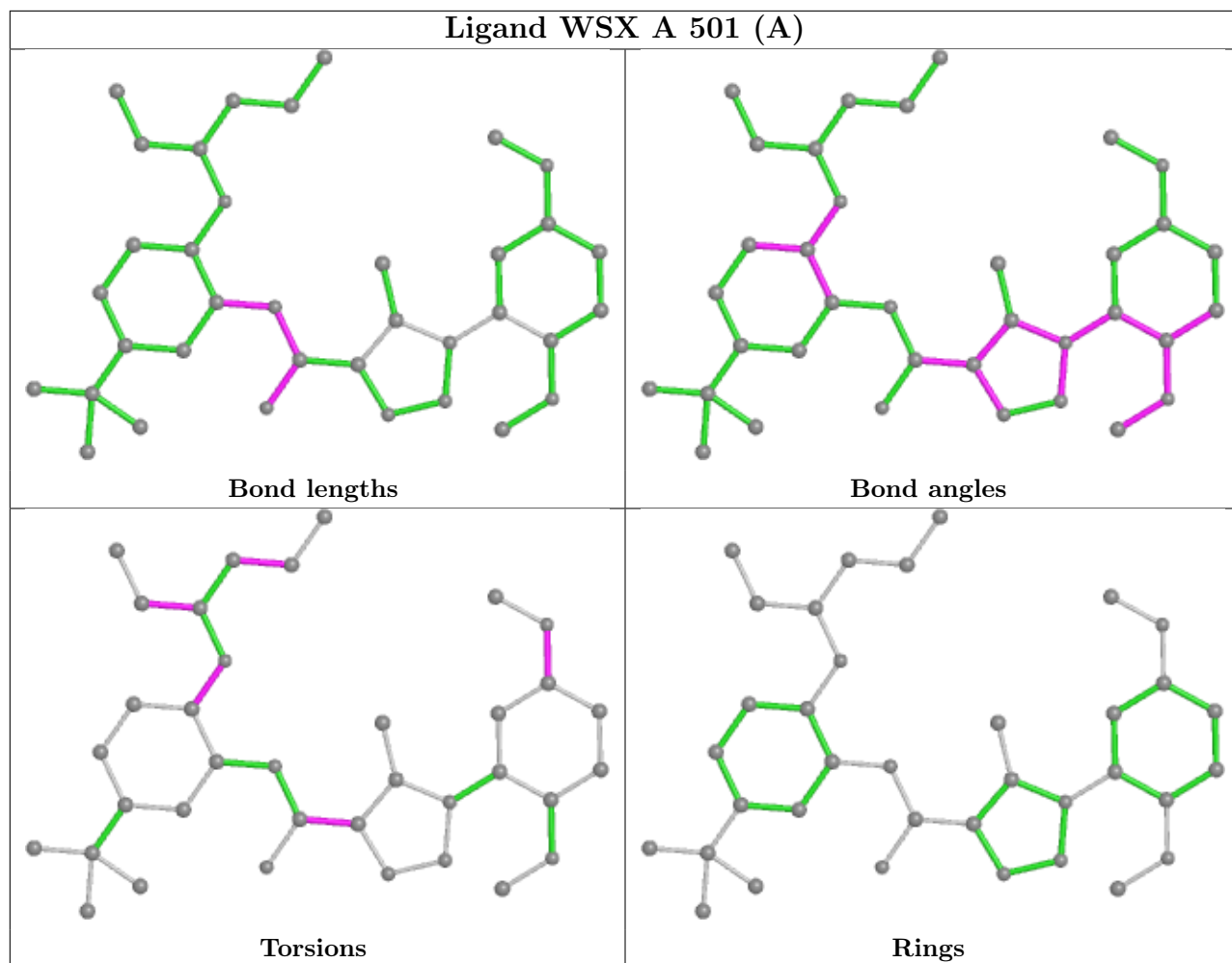
Mol	Chain	Res	Type	Atoms
3	A	502[B]	YGO	C08-C07-O06-C05
2	A	501[A]	WSX	C13-C05-O06-C07
3	A	502[B]	YGO	C13-C05-O06-C07
2	A	501[A]	WSX	C07-C10-C11-C12
3	A	502[B]	YGO	C10-C07-C08-C09
3	B	502[B]	YGO	O06-C07-C08-C09
2	B	501[A]	WSX	C13-C05-O06-C07
2	B	501[A]	WSX	C10-C07-C08-C09
3	B	502[B]	YGO	C36-C27-N24-N25
3	B	502[B]	YGO	C13-C05-O06-C07
2	A	501[A]	WSX	O01-C02-C21-C22
2	B	501[A]	WSX	O01-C02-C21-C22
3	A	502[B]	YGO	O01-C02-C21-C22
3	B	502[B]	YGO	O01-C02-C21-C22

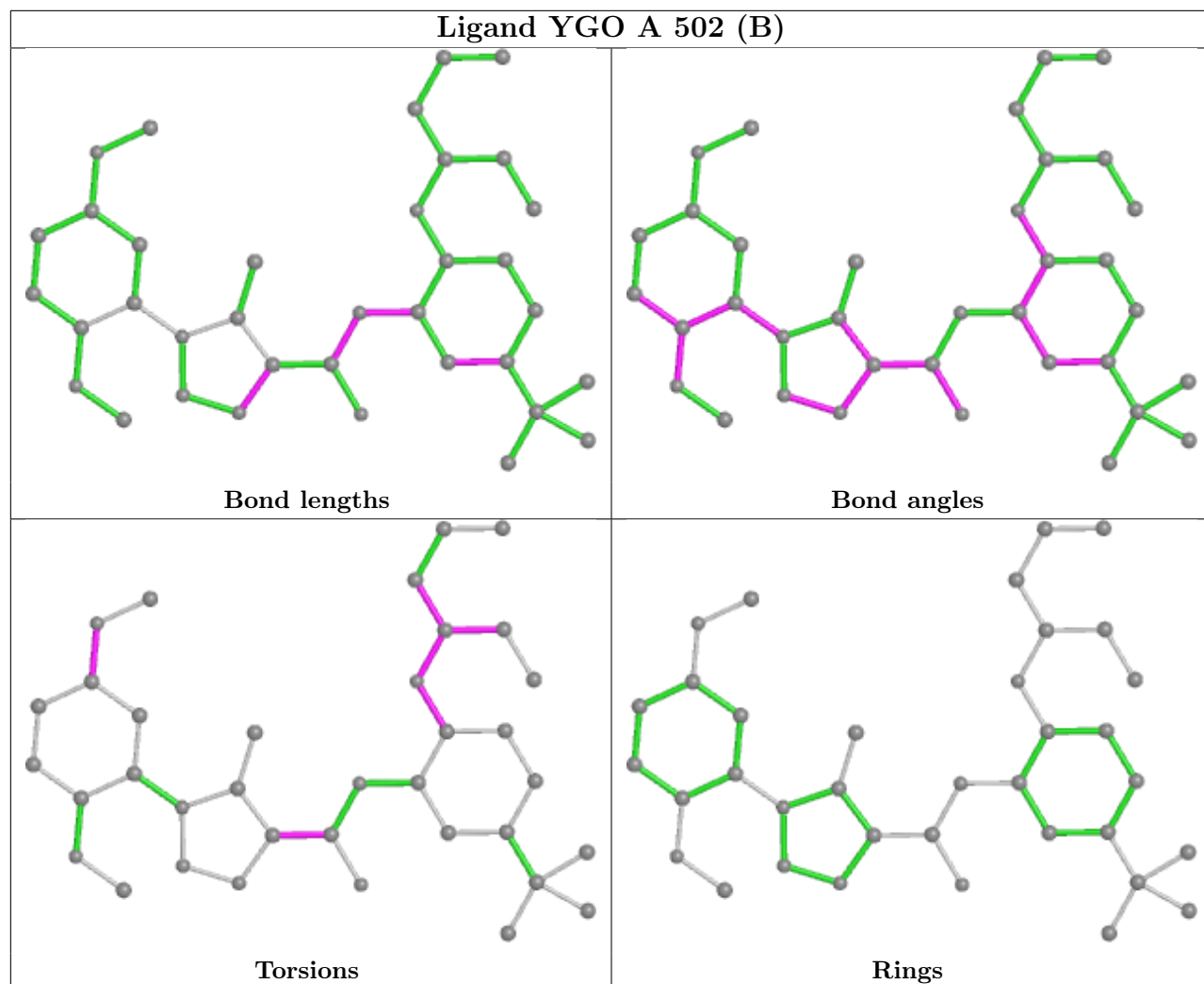
There are no ring outliers.

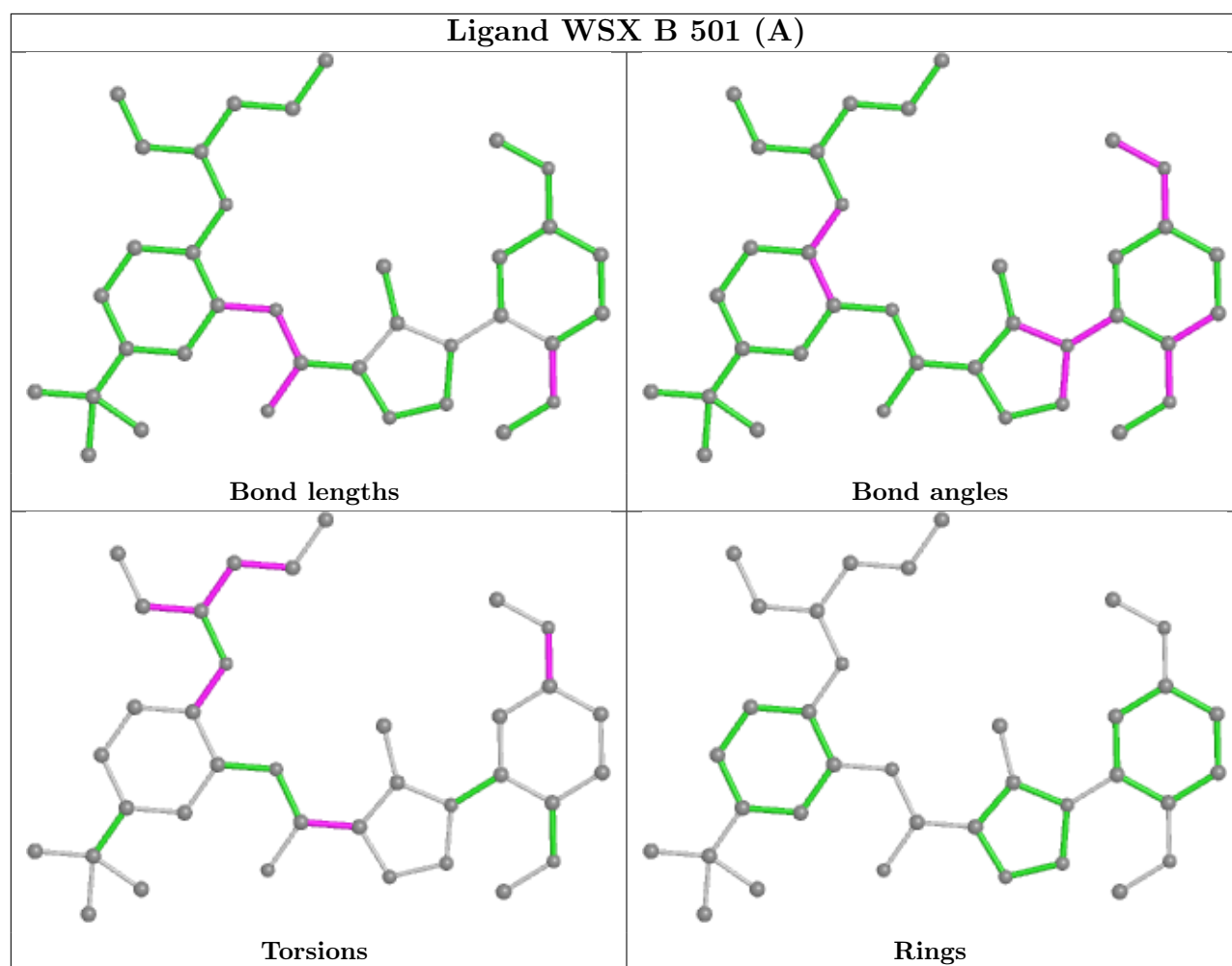
No monomer is involved in short contacts.

The following is a two-dimensional graphical depiction of Mogul quality analysis of bond lengths, bond angles, torsion angles, and ring geometry for all instances of the Ligand of Interest. In addition, ligands with molecular weight > 250 and outliers as shown on the validation Tables will also be included. For torsion angles, if less than 5% of the Mogul distribution of torsion angles is within 10 degrees of the torsion angle in question, then that torsion angle is considered an outlier. Any bond that is central to one or more torsion angles identified as an outlier by Mogul will be highlighted in the graph. For rings, the root-mean-square deviation (RMSD) between the ring in question and similar rings identified by Mogul is calculated over all ring torsion angles. If the average RMSD is greater than 60 degrees and the minimal RMSD between the ring in question and any Mogul-identified rings is also greater than 60 degrees, then that ring is considered an outlier. The outliers are highlighted in purple. The color gray indicates Mogul did not find sufficient equivalents in the CSD to analyse the geometry.









5.7 Other polymers [i](#)

There are no such residues in this entry.

5.8 Polymer linkage issues [i](#)

There are no chain breaks in this entry.

6 Fit of model and data [i](#)

6.1 Protein, DNA and RNA chains [i](#)

In the following table, the column labelled ‘#RSRZ > 2’ contains the number (and percentage) of RSRZ outliers, followed by percent RSRZ outliers for the chain as percentile scores relative to all X-ray entries and entries of similar resolution. The OWAB column contains the minimum, median, 95th percentile and maximum values of the occupancy-weighted average B-factor per residue. The column labelled ‘Q < 0.9’ lists the number of (and percentage) of residues with an average occupancy less than 0.9.

Mol	Chain	Analysed	<RSRZ>	#RSRZ>2	OWAB(Å ²)	Q<0.9
1	A	273/351 (77%)	-0.06	8 (2%) 51 51	61, 86, 130, 192	0
1	B	268/351 (76%)	0.05	4 (1%) 73 72	63, 86, 119, 150	0
All	All	541/702 (77%)	-0.01	12 (2%) 62 60	61, 86, 125, 192	0

All (12) RSRZ outliers are listed below:

Mol	Chain	Res	Type	RSRZ
1	A	206	LEU	3.4
1	A	235	GLU	3.3
1	A	209	LEU	3.0
1	B	284	CYS	3.0
1	A	445	SER	2.9
1	B	228	PRO	2.9
1	A	416	ASP	2.9
1	B	167	SER	2.7
1	B	319	LEU	2.4
1	A	447	THR	2.3
1	A	284	CYS	2.3
1	A	210	LYS	2.2

6.2 Non-standard residues in protein, DNA, RNA chains [i](#)

There are no non-standard protein/DNA/RNA residues in this entry.

6.3 Carbohydrates [i](#)

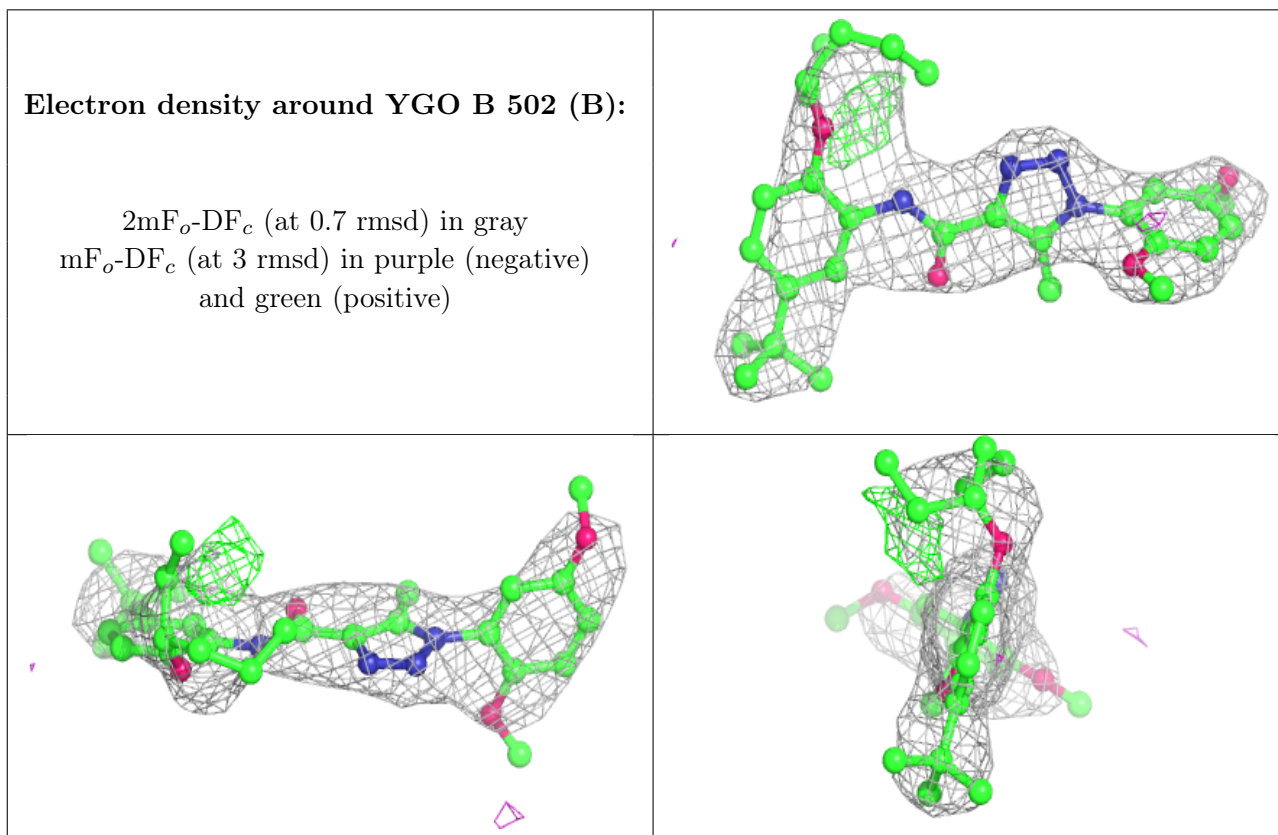
There are no monosaccharides in this entry.

6.4 Ligands [i](#)

In the following table, the Atoms column lists the number of modelled atoms in the group and the number defined in the chemical component dictionary. The B-factors column lists the minimum, median, 95th percentile and maximum values of B factors of atoms in the group. The column labelled 'Q < 0.9' lists the number of atoms with occupancy less than 0.9.

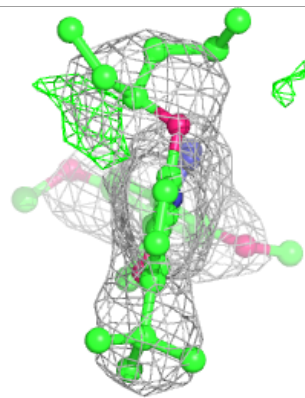
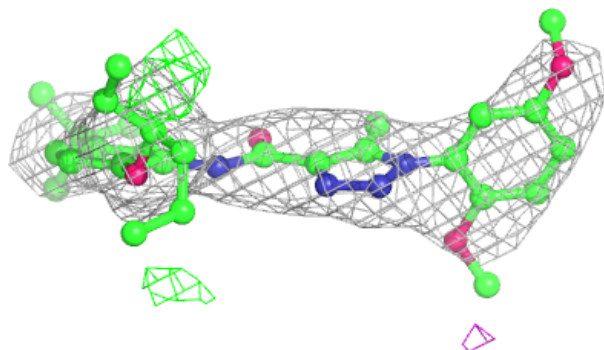
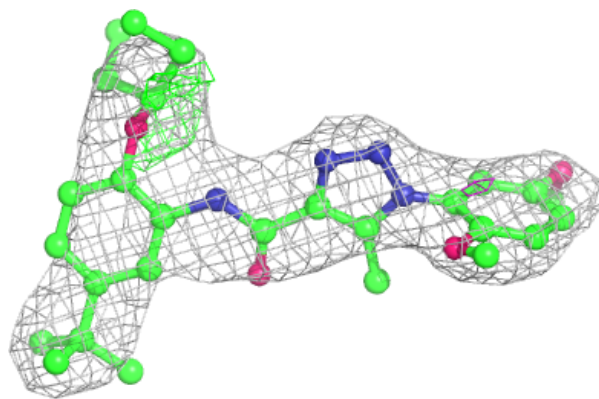
Mol	Type	Chain	Res	Atoms	RSCC	RSR	B-factors(Å ²)	Q<0.9
3	YGO	B	502[B]	36/36	0.90	0.28	83,89,98,100	36
2	WSX	B	501[A]	36/36	0.91	0.28	83,89,98,98	36
3	YGO	A	502[B]	36/36	0.91	0.25	84,90,105,110	36
2	WSX	A	501[A]	36/36	0.91	0.26	83,90,104,108	36

The following is a graphical depiction of the model fit to experimental electron density of all instances of the Ligand of Interest. In addition, ligands with molecular weight > 250 and outliers as shown on the geometry validation Tables will also be included. Each fit is shown from different orientation to approximate a three-dimensional view.

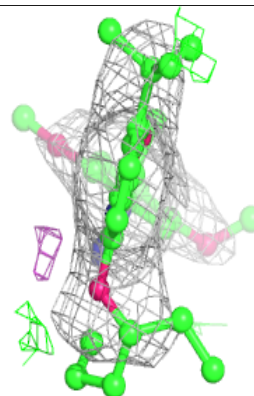
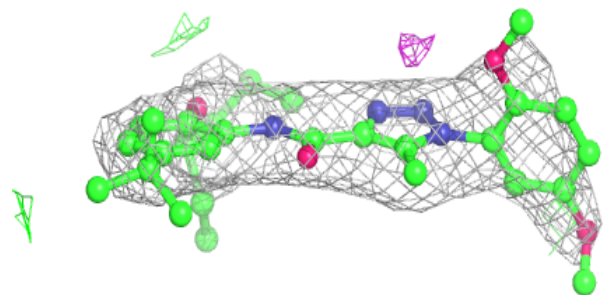
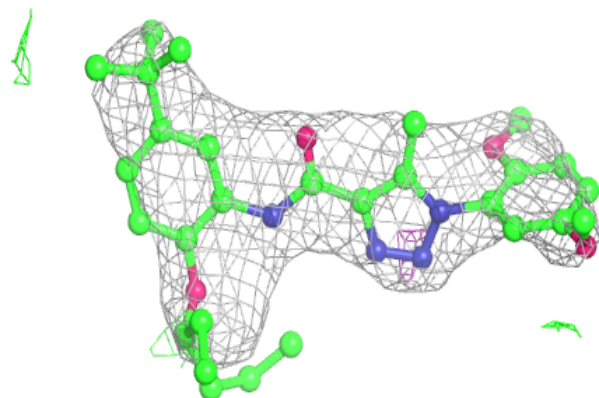


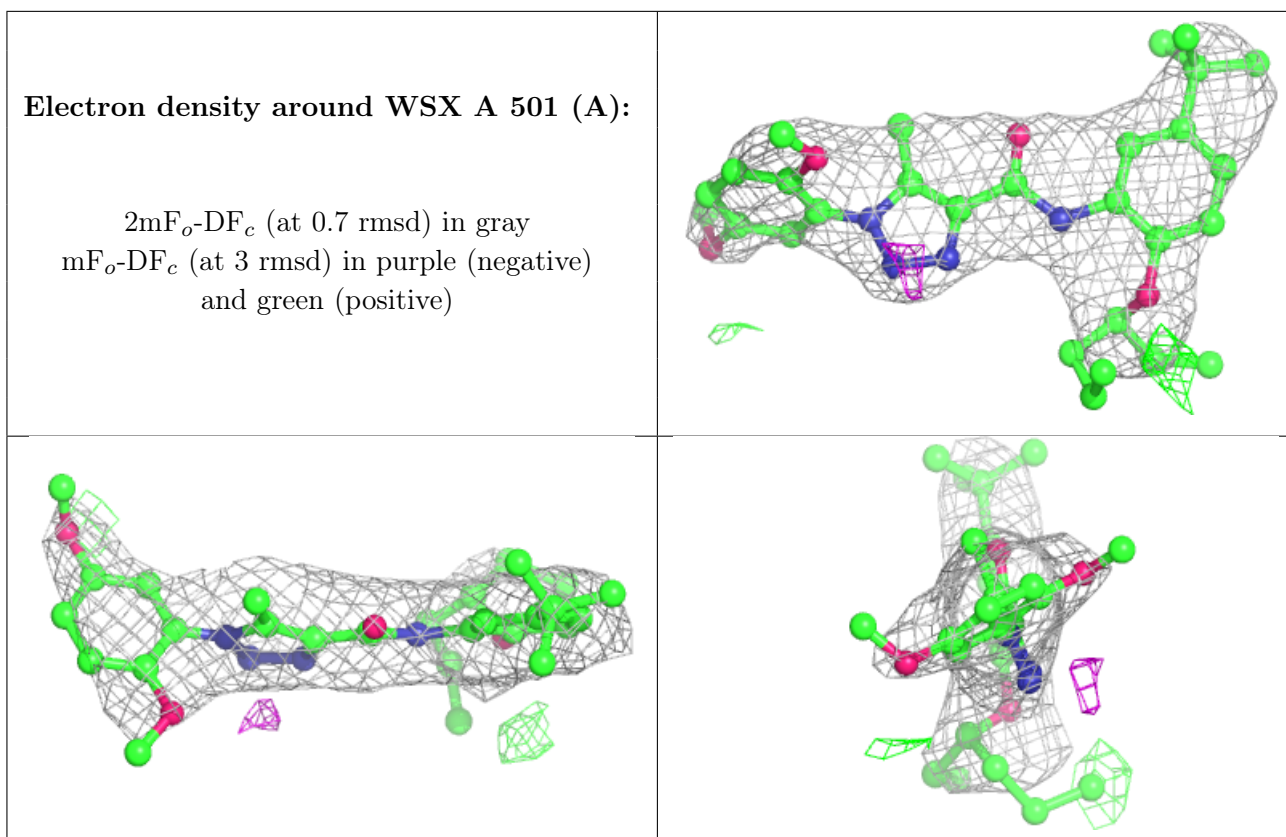
Electron density around WSX B 501 (A):

$2mF_o-DF_c$ (at 0.7 rmsd) in gray
 mF_o-DF_c (at 3 rmsd) in purple (negative)
and green (positive)

**Electron density around YGO A 502 (B):**

$2mF_o-DF_c$ (at 0.7 rmsd) in gray
 mF_o-DF_c (at 3 rmsd) in purple (negative)
and green (positive)





6.5 Other polymers [i](#)

There are no such residues in this entry.