



# Full wwPDB X-ray Structure Validation Report ⓘ

Feb 4, 2024 – 06:58 PM EST

PDB ID : 1SXG  
Title : Structural studies on the apo transcription factor form B. megaterium  
Authors : Schumacher, M.A.; Allen, G.S.; Diel, M.; Seidel, G.; Hillen, W.; Brennan, R.G.  
Deposited on : 2004-03-30  
Resolution : 2.75 Å(reported)

This is a Full wwPDB X-ray Structure Validation Report for a publicly released PDB entry.

We welcome your comments at [validation@mail.wwpdb.org](mailto:validation@mail.wwpdb.org)

A user guide is available at

<https://www.wwpdb.org/validation/2017/XrayValidationReportHelp>

with specific help available everywhere you see the ⓘ symbol.

The types of validation reports are described at

<http://www.wwpdb.org/validation/2017/FAQs#types>.

---

The following versions of software and data (see [references ⓘ](#)) were used in the production of this report:

MolProbity : 4.02b-467  
Mogul : 1.8.5 (274361), CSD as541be (2020)  
Xtriage (Phenix) : 1.13  
EDS : 2.36  
Percentile statistics : 20191225.v01 (using entries in the PDB archive December 25th 2019)  
Refmac : 5.8.0158  
CCP4 : 7.0.044 (Gargrove)  
Ideal geometry (proteins) : Engh & Huber (2001)  
Ideal geometry (DNA, RNA) : Parkinson et al. (1996)  
Validation Pipeline (wwPDB-VP) : 2.36

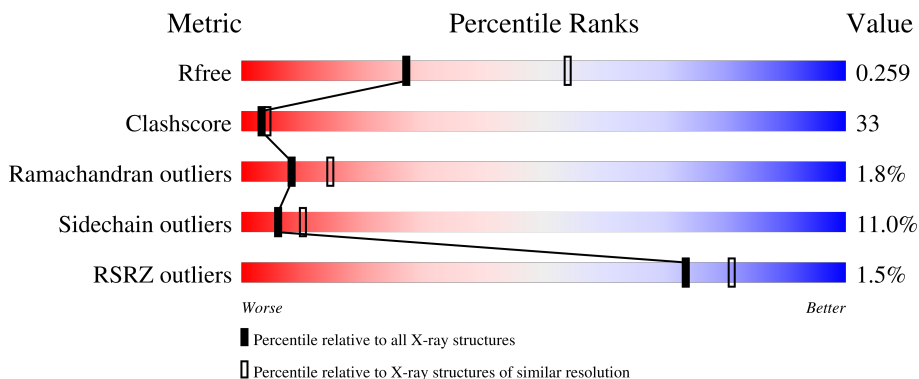
# 1 Overall quality at a glance

The following experimental techniques were used to determine the structure:

*X-RAY DIFFRACTION*

The reported resolution of this entry is 2.75 Å.

Percentile scores (ranging between 0-100) for global validation metrics of the entry are shown in the following graphic. The table shows the number of entries on which the scores are based.



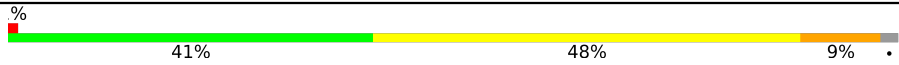
Metric	Whole archive (#Entries)	Similar resolution (#Entries, resolution range(Å))
$R_{free}$	130704	1235 (2.78-2.74)
Clashscore	141614	1277 (2.78-2.74)
Ramachandran outliers	138981	1257 (2.78-2.74)
Sidechain outliers	138945	1257 (2.78-2.74)
RSRZ outliers	127900	1207 (2.78-2.74)

The table below summarises the geometric issues observed across the polymeric chains and their fit to the electron density. The red, orange, yellow and green segments of the lower bar indicate the fraction of residues that contain outliers for  $\geq 3$ , 2, 1 and 0 types of geometric quality criteria respectively. A grey segment represents the fraction of residues that are not modelled. The numeric value for each fraction is indicated below the corresponding segment, with a dot representing fractions  $\leq 5\%$ . The upper red bar (where present) indicates the fraction of residues that have poor fit to the electron density. The numeric value is given above the bar.

Mol	Chain	Length	Quality of chain
1	A	280	
1	B	280	
1	D	280	
1	F	280	
1	I	280	

*Continued on next page...*

*Continued from previous page...*

Mol	Chain	Length	Quality of chain
1	P	280	 <p>A horizontal bar chart representing the quality of the chain. The bar is divided into three segments: a green segment on the left labeled '41%', a yellow segment in the middle labeled '48%', and a small orange segment on the right labeled '9%'. A small red square is at the beginning of the bar, and a small grey square is at the end. A '%' symbol is at the top left of the bar.</p>

## 2 Entry composition [i](#)

There are 3 unique types of molecules in this entry. The entry contains 12939 atoms, of which 0 are hydrogens and 0 are deuteriums.

In the tables below, the ZeroOcc column contains the number of atoms modelled with zero occupancy, the AltConf column contains the number of residues with at least one atom in alternate conformation and the Trace column contains the number of residues modelled with at most 2 atoms.

- Molecule 1 is a protein called Glucose-resistance amylase regulator.

Mol	Chain	Residues	Atoms					ZeroOcc	AltConf	Trace
			Total	C	N	O	S			
1	A	275	2141	1349	356	428	8	0	0	0
1	D	273	2123	1337	352	426	8	0	0	0
1	B	273	2123	1337	352	426	8	0	0	0
1	I	275	2141	1349	356	428	8	0	0	0
1	P	273	2123	1337	352	426	8	0	0	0
1	F	273	2123	1337	352	426	8	0	0	0

There are 18 discrepancies between the modelled and reference sequences:

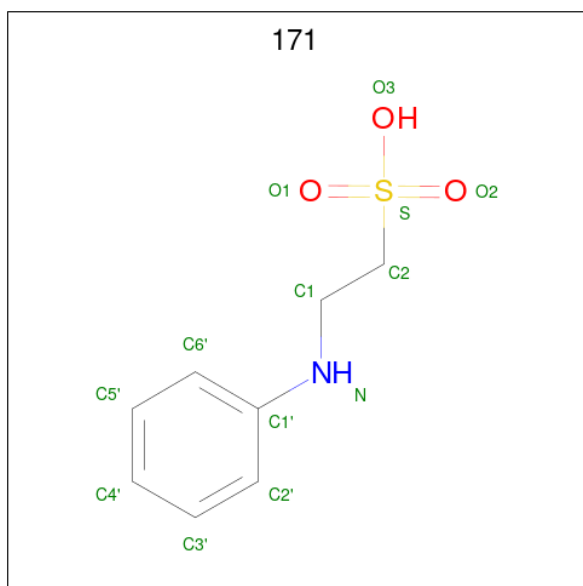
Chain	Residue	Modelled	Actual	Comment	Reference
A	87	THR	SER	conflict	UNP P46828
A	105	GLU	GLN	conflict	UNP P46828
A	320	GLN	GLU	conflict	UNP P46828
D	87	THR	SER	conflict	UNP P46828
D	105	GLU	GLN	conflict	UNP P46828
D	320	GLN	GLU	conflict	UNP P46828
B	87	THR	SER	conflict	UNP P46828
B	105	GLU	GLN	conflict	UNP P46828
B	320	GLN	GLU	conflict	UNP P46828
I	87	THR	SER	conflict	UNP P46828
I	105	GLU	GLN	conflict	UNP P46828
I	320	GLN	GLU	conflict	UNP P46828
P	87	THR	SER	conflict	UNP P46828
P	105	GLU	GLN	conflict	UNP P46828
P	320	GLN	GLU	conflict	UNP P46828
F	87	THR	SER	conflict	UNP P46828
F	105	GLU	GLN	conflict	UNP P46828

*Continued on next page...*

Continued from previous page...

Chain	Residue	Modelled	Actual	Comment	Reference
F	320	GLN	GLU	conflict	UNP P46828

- Molecule 2 is 2-PHENYLAMINO-ETHANESULFONIC ACID (three-letter code: 171) (formula: C<sub>8</sub>H<sub>11</sub>NO<sub>3</sub>S).



Mol	Chain	Residues	Atoms					ZeroOcc	AltConf
			Total	C	N	O	S		
2	A	1	13	8	1	3	1	0	0
2	B	1	13	8	1	3	1	0	0

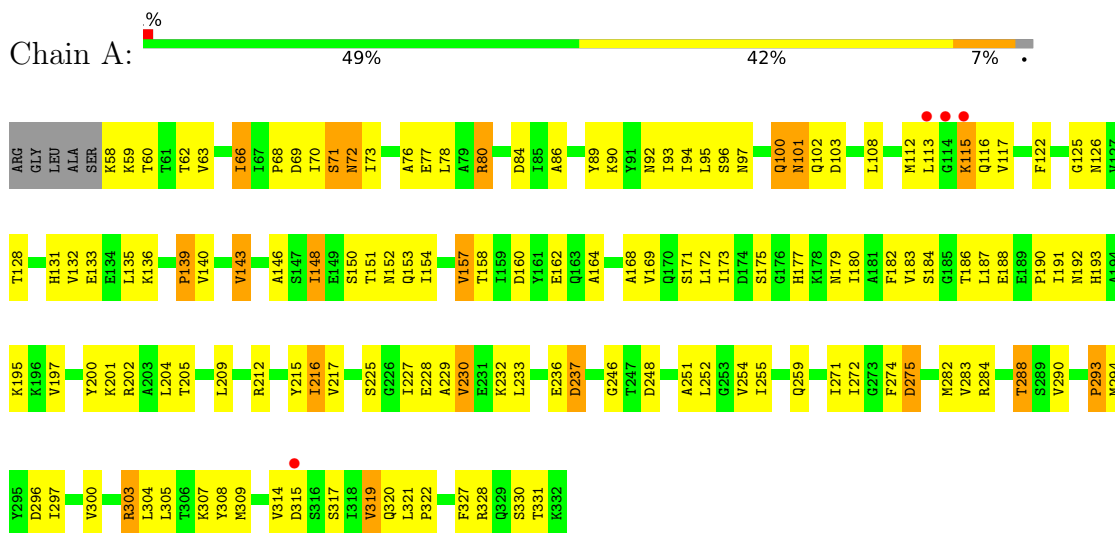
- Molecule 3 is water.

Mol	Chain	Residues	Atoms		ZeroOcc	AltConf
3	A	28	Total	O	0	0
			28	28		
3	D	30	Total	O	0	0
			30	30		
3	B	24	Total	O	0	0
			24	24		
3	I	25	Total	O	0	0
			25	25		
3	P	17	Total	O	0	0
			17	17		
3	F	15	Total	O	0	0
			15	15		

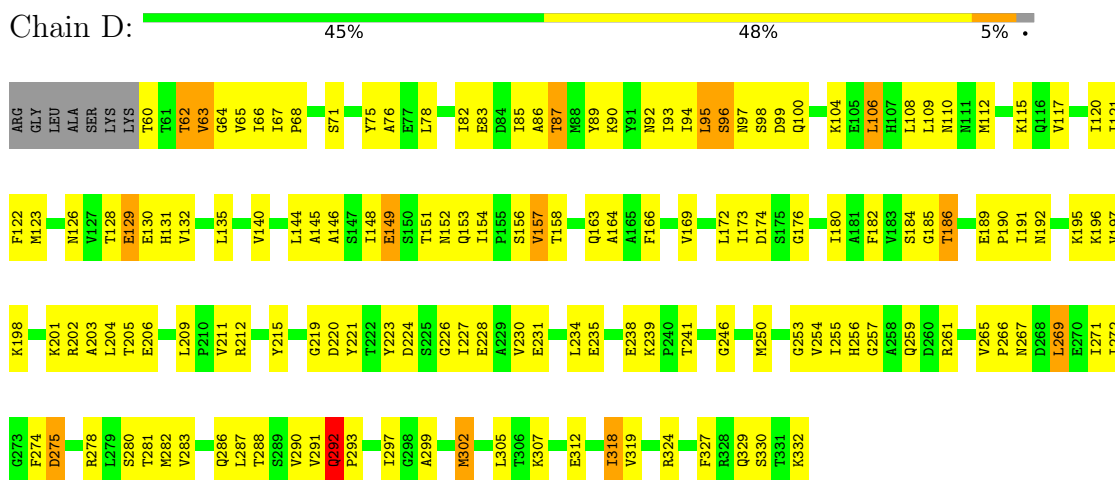
### 3 Residue-property plots

These plots are drawn for all protein, RNA, DNA and oligosaccharide chains in the entry. The first graphic for a chain summarises the proportions of the various outlier classes displayed in the second graphic. The second graphic shows the sequence view annotated by issues in geometry and electron density. Residues are color-coded according to the number of geometric quality criteria for which they contain at least one outlier: green = 0, yellow = 1, orange = 2 and red = 3 or more. A red dot above a residue indicates a poor fit to the electron density ( $RSRZ > 2$ ). Stretches of 2 or more consecutive residues without any outlier are shown as a green connector. Residues present in the sample, but not in the model, are shown in grey.

- Molecule 1: Glucose-resistance amylase regulator

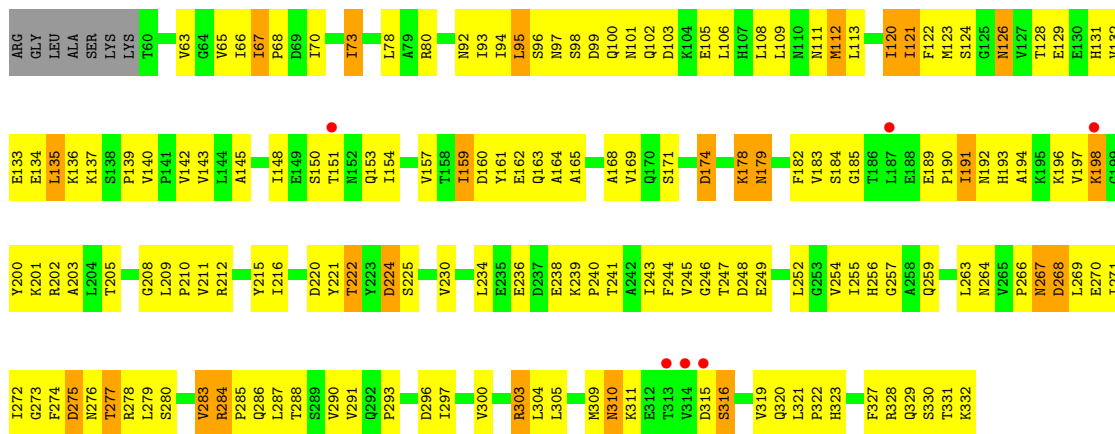


- Molecule 1: Glucose-resistance amylase regulator

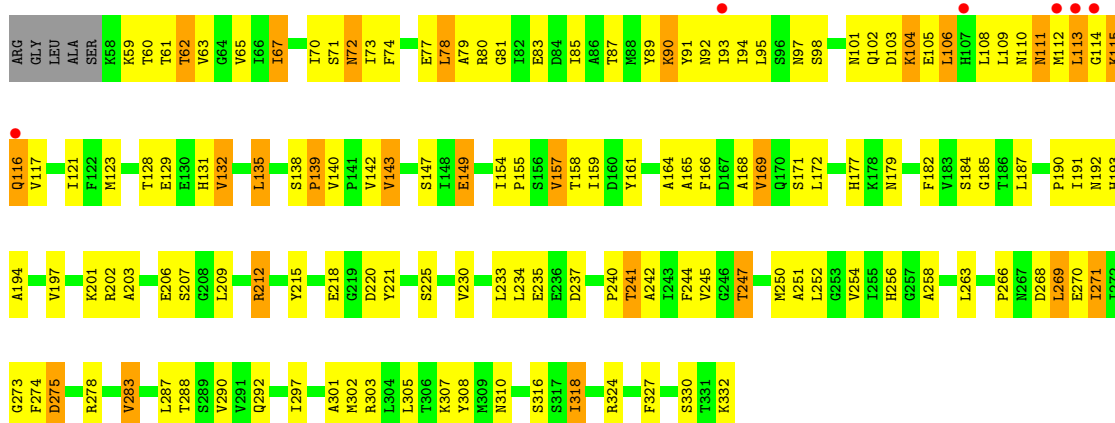


- Molecule 1: Glucose-resistance amylase regulator

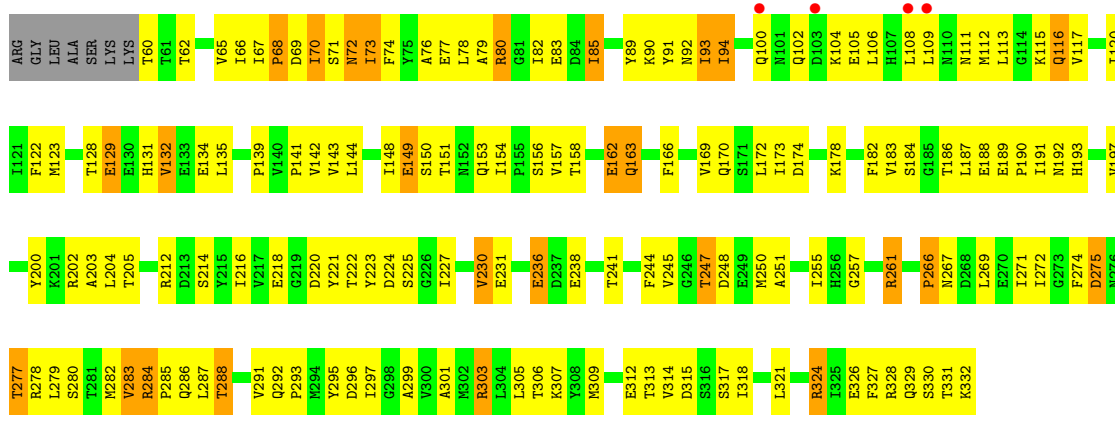




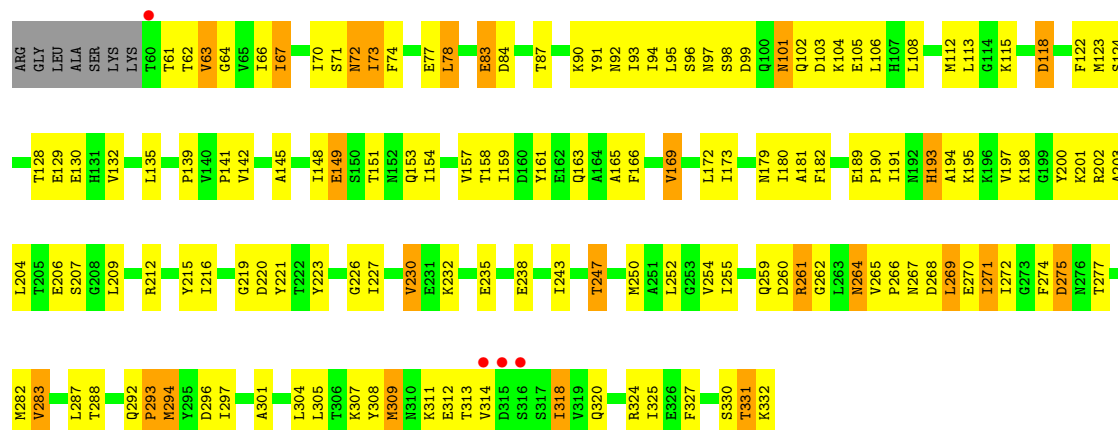
• Molecule 1: Glucose-resistance amylase regulator



• Molecule 1: Glucose-resistance amylase regulator



• Molecule 1: Glucose-resistance amylase regulator





## 4 Data and refinement statistics

Property	Value	Source
Space group	C 1 2 1	Depositor
Cell constants a, b, c, $\alpha$ , $\beta$ , $\gamma$	375.39Å 60.14Å 75.65Å 90.00° 95.59° 90.00°	Depositor
Resolution (Å)	75.29 – 2.75 75.29 – 2.71	Depositor EDS
% Data completeness (in resolution range)	98.9 (75.29-2.75) 96.1 (75.29-2.71)	Depositor EDS
$R_{merge}$	(Not available)	Depositor
$R_{sym}$	0.08	Depositor
$\langle I/\sigma(I) \rangle$ <sup>1</sup>	1.35 (at 2.69Å)	Xtrriage
Refinement program	CNS 1.0	Depositor
R, $R_{free}$	0.214 , 0.263 0.209 , 0.259	Depositor DCC
$R_{free}$ test set	4413 reflections (9.89%)	wwPDB-VP
Wilson B-factor (Å <sup>2</sup> )	47.9	Xtrriage
Anisotropy	0.125	Xtrriage
Bulk solvent $k_{sol}$ (e/Å <sup>3</sup> ), $B_{sol}$ (Å <sup>2</sup> )	0.33 , 57.9	EDS
L-test for twinning <sup>2</sup>	$\langle  L  \rangle = 0.48$ , $\langle L^2 \rangle = 0.31$	Xtrriage
Estimated twinning fraction	No twinning to report.	Xtrriage
$F_o, F_c$ correlation	0.93	EDS
Total number of atoms	12939	wwPDB-VP
Average B, all atoms (Å <sup>2</sup> )	43.0	wwPDB-VP

Xtrriage's analysis on translational NCS is as follows: *The largest off-origin peak in the Patterson function is 3.80% of the height of the origin peak. No significant pseudotranslation is detected.*

<sup>1</sup>Intensities estimated from amplitudes.

<sup>2</sup>Theoretical values of  $\langle |L| \rangle$ ,  $\langle L^2 \rangle$  for acentric reflections are 0.5, 0.333 respectively for untwinned datasets, and 0.375, 0.2 for perfectly twinned datasets.

## 5 Model quality [i](#)

### 5.1 Standard geometry [i](#)

Bond lengths and bond angles in the following residue types are not validated in this section:  
171

The Z score for a bond length (or angle) is the number of standard deviations the observed value is removed from the expected value. A bond length (or angle) with  $|Z| > 5$  is considered an outlier worth inspection. RMSZ is the root-mean-square of all Z scores of the bond lengths (or angles).

Mol	Chain	Bond lengths		Bond angles	
		RMSZ	# Z  >5	RMSZ	# Z  >5
1	A	0.46	0/2174	0.75	0/2945
1	B	0.43	0/2156	0.72	1/2923 (0.0%)
1	D	0.45	0/2156	0.72	1/2923 (0.0%)
1	F	0.42	0/2156	0.72	0/2923
1	I	0.44	0/2174	0.73	1/2945 (0.0%)
1	P	0.42	0/2156	0.72	1/2923 (0.0%)
All	All	0.44	0/12972	0.72	4/17582 (0.0%)

There are no bond length outliers.

All (4) bond angle outliers are listed below:

Mol	Chain	Res	Type	Atoms	Z	Observed(°)	Ideal(°)
1	P	292	GLN	N-CA-C	-5.22	96.90	111.00
1	I	292	GLN	N-CA-C	-5.14	97.13	111.00
1	D	292	GLN	N-CA-C	-5.12	97.19	111.00
1	B	121	ILE	N-CA-C	-5.07	97.32	111.00

There are no chirality outliers.

There are no planarity outliers.

### 5.2 Too-close contacts [i](#)

In the following table, the Non-H and H(model) columns list the number of non-hydrogen atoms and hydrogen atoms in the chain respectively. The H(added) column lists the number of hydrogen atoms added and optimized by MolProbity. The Clashes column lists the number of clashes within the asymmetric unit, whereas Symm-Clashes lists symmetry-related clashes.

Mol	Chain	Non-H	H(model)	H(added)	Clashes	Symm-Clashes
1	A	2141	0	2147	127	0

*Continued on next page...*

Continued from previous page...

Mol	Chain	Non-H	H(model)	H(added)	Clashes	Symm-Clashes
1	B	2123	0	2121	193	0
1	D	2123	0	2121	124	0
1	F	2123	0	2121	146	0
1	I	2141	0	2147	131	0
1	P	2123	0	2121	145	0
2	A	13	0	11	0	0
2	B	13	0	11	1	0
3	A	28	0	0	6	0
3	B	24	0	0	2	0
3	D	30	0	0	0	0
3	F	15	0	0	0	0
3	I	25	0	0	0	0
3	P	17	0	0	2	0
All	All	12939	0	12800	839	0

The all-atom clashscore is defined as the number of clashes found per 1000 atoms (including hydrogen atoms). The all-atom clashscore for this structure is 33.

All (839) close contacts within the same asymmetric unit are listed below, sorted by their clash magnitude.

Atom-1	Atom-2	Interatomic distance (Å)	Clash overlap (Å)
1:P:231:GLU:HG3	1:P:261:ARG:HH12	1.18	1.09
1:B:288:THR:HG22	1:B:328:ARG:H	1.12	1.08
1:B:191:ILE:HD12	1:B:191:ILE:H	1.22	1.01
1:A:252:LEU:HG	1:A:283:VAL:HG11	1.40	1.00
1:B:252:LEU:HG	1:B:283:VAL:HG13	1.46	0.97
1:B:277:THR:HG22	1:B:279:LEU:H	1.30	0.96
1:B:94:ILE:HD11	1:I:115:LYS:HE2	1.48	0.95
1:B:179:ASN:ND2	1:B:179:ASN:H	1.67	0.92
1:I:109:LEU:O	1:I:113:LEU:HD21	1.70	0.92
1:A:113:LEU:HD13	1:A:139:PRO:HG2	1.52	0.90
1:B:73:ILE:HD13	1:B:73:ILE:H	1.37	0.89
1:F:194:ALA:HA	1:F:198:LYS:HE2	1.54	0.89
1:P:113:LEU:HG	1:P:139:PRO:HG3	1.54	0.88
1:B:222:THR:HG22	1:B:225:SER:H	1.38	0.86
1:F:70:ILE:HB	1:F:97:ASN:HD21	1.40	0.86
1:A:255:ILE:HD13	1:A:271:ILE:HD12	1.58	0.86
1:B:252:LEU:HG	1:B:283:VAL:CG1	2.06	0.85
1:A:80:ARG:NH2	1:D:97:ASN:HB3	1.91	0.85
1:P:182:PHE:CE1	1:P:184:SER:HB2	2.12	0.84
1:I:247:THR:HG22	1:I:250:MET:H	1.43	0.84

Continued on next page...

*Continued from previous page...*

Atom-1	Atom-2	Interatomic distance (Å)	Clash overlap (Å)
1:F:307:LYS:HG2	1:F:314:VAL:HG22	1.59	0.83
1:B:288:THR:HG22	1:B:328:ARG:N	1.92	0.83
1:D:62:THR:HB	1:D:92:ASN:HB2	1.61	0.82
1:B:80:ARG:HD3	1:I:70:ILE:HG22	1.58	0.82
1:P:83:GLU:OE1	1:P:93:ILE:HG21	1.80	0.82
1:F:101:ASN:C	1:F:101:ASN:HD22	1.84	0.81
1:A:70:ILE:HG23	1:D:76:ALA:HB1	1.60	0.81
1:B:65:VAL:HB	1:B:95:LEU:HD22	1.62	0.81
1:B:142:VAL:HG13	1:B:154:ILE:HD11	1.62	0.81
1:P:94:ILE:HD11	1:F:94:ILE:HD12	1.63	0.81
1:F:148:ILE:HD11	1:F:190:PRO:HB2	1.60	0.81
1:P:85:ILE:HD12	1:P:299:ALA:HA	1.62	0.80
1:A:135:LEU:HD23	1:A:154:ILE:HG12	1.62	0.80
1:P:192:ASN:O	1:P:197:VAL:HG23	1.82	0.80
1:A:92:ASN:O	1:A:93:ILE:HD12	1.81	0.79
1:B:70:ILE:H	1:B:97:ASN:ND2	1.79	0.79
1:F:318:ILE:HD13	1:F:318:ILE:O	1.82	0.79
1:D:129:GLU:CD	1:D:129:GLU:H	1.83	0.79
1:A:296:ASP:HB3	1:A:321:LEU:HD13	1.63	0.79
1:I:303:ARG:HH12	1:I:307:LYS:HD2	1.45	0.79
1:A:80:ARG:HH22	1:D:97:ASN:HB3	1.45	0.78
1:B:112:MET:HG2	1:B:120:ILE:HD13	1.65	0.78
1:P:93:ILE:HG22	3:P:608:HOH:O	1.83	0.78
1:F:230:VAL:HG21	1:F:254:VAL:HA	1.65	0.77
1:B:179:ASN:H	1:B:179:ASN:HD22	1.31	0.77
1:F:247:THR:HG22	1:F:250:MET:H	1.49	0.77
1:A:288:THR:HB	1:A:327:PHE:HA	1.67	0.76
1:P:172:LEU:HD11	1:P:272:ILE:HD13	1.67	0.76
1:B:216:ILE:HG13	1:B:216:ILE:O	1.83	0.76
1:P:76:ALA:HB1	1:F:71:SER:HA	1.68	0.76
1:P:293:PRO:HB2	1:P:296:ASP:HB2	1.66	0.76
1:B:230:VAL:HG11	1:B:254:VAL:HG13	1.67	0.76
1:A:116:GLN:HG3	1:A:116:GLN:O	1.86	0.76
1:A:168:ALA:O	1:A:171:SER:HB3	1.86	0.75
1:B:277:THR:HG22	1:B:279:LEU:N	2.00	0.75
1:F:277:THR:HG22	1:F:294:MET:HE1	1.69	0.75
1:P:277:THR:HG23	1:P:279:LEU:H	1.50	0.75
1:A:58:LYS:HD2	3:A:731:HOH:O	1.85	0.74
1:I:182:PHE:CE1	1:I:184:SER:HB2	2.21	0.74
1:P:287:LEU:HA	1:P:330:SER:OG	1.87	0.74
1:P:257:GLY:O	1:P:261:ARG:HD2	1.87	0.74

*Continued on next page...*

*Continued from previous page...*

Atom-1	Atom-2	Interatomic distance (Å)	Clash overlap (Å)
1:I:128:THR:H	1:I:131:HIS:HD2	1.35	0.74
1:P:288:THR:HG22	1:P:328:ARG:H	1.51	0.74
1:B:135:LEU:HG	1:B:154:ILE:HD13	1.69	0.73
1:B:288:THR:CG2	1:B:328:ARG:H	1.95	0.73
1:P:109:LEU:HD21	1:P:135:LEU:HD13	1.70	0.73
1:F:230:VAL:CG2	1:F:254:VAL:HA	2.18	0.73
1:A:216:ILE:HD13	1:A:216:ILE:O	1.88	0.73
1:P:151:THR:HG21	1:P:153:GLN:NE2	2.04	0.73
1:A:274:PHE:O	1:A:275:ASP:HB2	1.89	0.72
1:A:303:ARG:NH1	3:A:616:HOH:O	2.21	0.72
1:I:108:LEU:HA	1:I:111:ASN:HD22	1.53	0.72
1:B:230:VAL:CG1	1:B:254:VAL:HG13	2.19	0.72
1:A:288:THR:HG23	1:A:330:SER:OG	1.90	0.71
1:P:67:ILE:HD11	1:P:70:ILE:HD12	1.72	0.71
1:B:288:THR:HB	1:B:327:PHE:HA	1.72	0.71
1:P:172:LEU:HD21	1:P:272:ILE:HD11	1.71	0.71
1:P:129:GLU:CD	1:P:129:GLU:H	1.94	0.70
1:B:182:PHE:HB3	1:B:216:ILE:HG22	1.72	0.70
1:P:72:ASN:C	1:P:72:ASN:HD22	1.95	0.70
1:A:68:PRO:HB3	1:A:100:GLN:NE2	2.07	0.70
1:I:157:VAL:HG22	1:I:297:ILE:HG23	1.72	0.70
1:P:73:ILE:O	1:P:77:GLU:HG3	1.92	0.70
1:A:293:PRO:O	1:A:297:ILE:HG12	1.92	0.69
1:B:277:THR:CG2	1:B:279:LEU:H	2.04	0.69
1:A:115:LYS:HD2	1:D:115:LYS:HB3	1.74	0.69
1:D:255:ILE:HG12	1:D:271:ILE:HD12	1.74	0.69
1:I:252:LEU:HG	1:I:283:VAL:CG1	2.23	0.69
1:F:271:ILE:HD11	1:F:287:LEU:HD13	1.75	0.69
1:D:126:ASN:HD22	1:D:190:PRO:HD3	1.58	0.69
1:A:68:PRO:HB3	1:A:100:GLN:HE22	1.57	0.68
1:I:252:LEU:HG	1:I:283:VAL:HG11	1.75	0.68
1:F:101:ASN:HD21	1:F:103:ASP:HB2	1.57	0.68
1:B:247:THR:HG22	1:B:249:GLU:H	1.59	0.68
1:A:288:THR:HG22	1:A:328:ARG:H	1.59	0.68
1:F:157:VAL:HG11	1:F:301:ALA:HB2	1.75	0.67
1:D:255:ILE:O	1:D:259:GLN:HG3	1.94	0.67
1:I:135:LEU:HD23	1:I:154:ILE:HD12	1.76	0.67
1:P:291:VAL:HB	1:P:324:ARG:HG3	1.77	0.67
1:B:143:VAL:HG21	1:B:304:LEU:HD23	1.75	0.67
1:I:288:THR:HG23	1:I:327:PHE:HA	1.75	0.67
1:I:113:LEU:HD13	1:I:139:PRO:HD2	1.75	0.67

*Continued on next page...*

*Continued from previous page...*

Atom-1	Atom-2	Interatomic distance (Å)	Clash overlap (Å)
1:F:151:THR:HG22	1:F:153:GLN:HG2	1.77	0.67
1:B:70:ILE:HB	1:B:97:ASN:HD21	1.60	0.67
1:B:112:MET:HG2	1:B:120:ILE:CD1	2.25	0.67
1:I:77:GLU:OE2	1:I:278:ARG:HD3	1.94	0.67
1:B:70:ILE:CB	1:B:97:ASN:HD21	2.08	0.67
1:P:68:PRO:HB3	1:P:100:GLN:NE2	2.09	0.67
1:A:288:THR:HG21	1:A:331:THR:OG1	1.94	0.66
1:D:129:GLU:HG2	1:D:130:GLU:OE2	1.96	0.66
1:F:197:VAL:HG22	1:F:201:LYS:HE3	1.77	0.66
1:D:212:ARG:HH12	1:D:238:GLU:HB2	1.60	0.66
1:B:191:ILE:H	1:B:191:ILE:CD1	2.02	0.66
1:I:303:ARG:NH1	1:I:307:LYS:HD2	2.10	0.66
1:A:172:LEU:HD11	1:A:272:ILE:HD13	1.78	0.66
1:D:288:THR:HG23	1:D:327:PHE:HA	1.78	0.66
1:D:281:THR:HA	1:D:286:GLN:HE21	1.61	0.66
1:B:165:ALA:O	1:B:169:VAL:HG23	1.96	0.66
1:D:157:VAL:HG22	1:D:297:ILE:HG23	1.78	0.66
1:F:72:ASN:ND2	1:F:74:PHE:H	1.94	0.65
1:A:300:VAL:HG21	1:A:321:LEU:HD11	1.78	0.65
1:B:274:PHE:O	1:B:275:ASP:HB2	1.97	0.65
1:I:72:ASN:HD22	1:I:73:ILE:N	1.94	0.65
1:D:104:LYS:O	1:D:108:LEU:HG	1.96	0.65
1:F:277:THR:HG22	1:F:294:MET:CE	2.26	0.65
1:I:318:ILE:HD13	1:I:318:ILE:O	1.97	0.65
1:P:274:PHE:O	1:P:275:ASP:HB2	1.96	0.65
1:F:72:ASN:HD22	1:F:73:ILE:N	1.94	0.65
1:D:109:LEU:HD21	1:D:135:LEU:HD13	1.78	0.65
1:D:151:THR:OG1	1:D:153:GLN:HG2	1.97	0.65
1:A:183:VAL:HG22	1:A:217:VAL:HG22	1.78	0.65
1:I:192:ASN:O	1:I:197:VAL:HG12	1.97	0.64
1:F:67:ILE:HD11	1:F:95:LEU:HD21	1.79	0.64
1:D:226:GLY:O	1:D:230:VAL:HG23	1.97	0.64
1:B:151:THR:HG21	1:B:153:GLN:HE21	1.62	0.64
1:D:63:VAL:HG13	1:D:93:ILE:HD13	1.77	0.64
1:D:307:LYS:HD3	1:D:312:GLU:OE1	1.98	0.64
1:P:326:GLU:HG2	1:P:328:ARG:NH2	2.13	0.64
1:D:78:LEU:O	1:D:82:ILE:HG12	1.97	0.64
1:A:100:GLN:OE1	1:A:125:GLY:N	2.28	0.64
1:B:230:VAL:HG21	1:B:257:GLY:HA3	1.79	0.64
1:P:70:ILE:HD11	1:F:70:ILE:HG12	1.79	0.64
1:D:265:VAL:HG13	1:D:269:LEU:O	1.98	0.63

*Continued on next page...*

*Continued from previous page...*

Atom-1	Atom-2	Interatomic distance (Å)	Clash overlap (Å)
1:A:305:LEU:HG	1:A:309:MET:HE2	1.80	0.63
1:I:187:LEU:HD13	1:I:218:GLU:CG	2.29	0.63
1:D:129:GLU:CD	1:D:129:GLU:N	2.51	0.63
1:I:215:TYR:CZ	1:I:240:PRO:HG3	2.34	0.63
1:A:230:VAL:CG2	1:A:254:VAL:HA	2.28	0.63
1:D:278:ARG:O	1:D:282:MET:HG3	1.99	0.63
1:I:81:GLY:O	1:I:85:ILE:HG12	1.98	0.63
1:F:72:ASN:ND2	1:F:73:ILE:HD13	2.13	0.63
1:A:308:TYR:CZ	1:A:314:VAL:HG21	2.33	0.63
1:I:165:ALA:O	1:I:169:VAL:HG12	1.98	0.63
1:B:220:ASP:OD1	1:B:225:SER:HB3	1.98	0.63
1:A:66:ILE:HG13	1:A:122:PHE:HD2	1.64	0.62
1:I:230:VAL:CG2	1:I:254:VAL:HA	2.29	0.62
1:F:165:ALA:O	1:F:169:VAL:HG12	1.99	0.62
1:A:112:MET:O	1:A:117:VAL:HG22	2.00	0.62
1:D:223:TYR:OH	1:D:256:HIS:HD2	1.81	0.62
1:P:94:ILE:HG12	1:F:94:ILE:HG23	1.81	0.62
1:D:182:PHE:CE1	1:D:184:SER:HB2	2.35	0.62
1:I:143:VAL:HB	1:I:155:PRO:HB2	1.81	0.62
1:B:182:PHE:CE1	1:B:184:SER:HB2	2.34	0.62
1:D:66:ILE:HB	1:D:122:PHE:HD2	1.65	0.62
1:P:286:GLN:HB2	1:P:329:GLN:NE2	2.15	0.62
1:B:111:ASN:ND2	1:I:92:ASN:ND2	2.47	0.61
1:F:77:GLU:HB2	1:F:294:MET:HE3	1.82	0.61
1:B:112:MET:HE3	1:B:112:MET:HA	1.80	0.61
1:A:102:GLN:HG2	1:A:131:HIS:HE1	1.66	0.61
1:A:113:LEU:CD1	1:A:139:PRO:HG2	2.29	0.61
1:I:128:THR:H	1:I:131:HIS:CD2	2.16	0.61
1:A:246:GLY:O	1:A:274:PHE:HB3	2.00	0.61
1:D:85:ILE:HG21	1:D:302:MET:HB3	1.83	0.61
1:I:114:GLY:C	1:I:116:GLN:H	2.04	0.61
1:I:168:ALA:O	1:I:171:SER:HB3	1.99	0.61
1:P:89:TYR:HB3	1:P:91:TYR:CE2	2.36	0.61
1:P:90:LYS:O	1:P:90:LYS:HG3	2.00	0.61
1:P:283:VAL:O	1:P:284:ARG:HD2	2.01	0.61
1:B:143:VAL:HG12	1:B:305:LEU:HD13	1.82	0.61
1:F:202:ARG:O	1:F:206:GLU:HB3	2.01	0.61
1:A:305:LEU:HG	1:A:309:MET:CE	2.31	0.60
1:F:227:ILE:O	1:F:230:VAL:HG23	2.01	0.60
1:A:284:ARG:NH1	1:D:256:HIS:HB3	2.16	0.60
1:D:123:MET:HG3	1:D:145:ALA:O	2.01	0.60

*Continued on next page...*

*Continued from previous page...*

Atom-1	Atom-2	Interatomic distance (Å)	Clash overlap (Å)
1:B:106:LEU:HD22	1:B:134:GLU:HG2	1.81	0.60
1:P:85:ILE:HD12	1:P:299:ALA:CA	2.29	0.60
1:D:83:GLU:O	1:D:86:ALA:HB3	2.01	0.60
1:I:67:ILE:HG22	1:I:123:MET:CE	2.32	0.60
1:I:230:VAL:HG12	1:I:234:LEU:HG	1.81	0.60
1:F:190:PRO:HA	1:F:193:HIS:CD2	2.36	0.60
1:D:121:ILE:HD11	1:D:302:MET:HG2	1.84	0.60
1:B:159:ILE:HG13	1:B:323:HIS:HB3	1.83	0.60
1:A:108:LEU:O	1:A:112:MET:HG2	2.00	0.60
1:P:285:PRO:HB2	1:P:329:GLN:CB	2.32	0.60
1:F:252:LEU:HG	1:F:283:VAL:CG1	2.31	0.60
1:B:179:ASN:HD22	1:B:179:ASN:N	1.97	0.60
1:B:319:VAL:HG12	1:B:320:GLN:N	2.17	0.60
1:F:63:VAL:HG13	1:F:93:ILE:HD13	1.84	0.59
1:A:180:ILE:HD12	1:A:204:LEU:HD21	1.83	0.59
1:B:65:VAL:HB	1:B:95:LEU:CD2	2.32	0.59
1:B:159:ILE:HG12	1:B:160:ASP:N	2.17	0.59
1:B:284:ARG:NH1	1:I:256:HIS:HB3	2.17	0.59
1:I:230:VAL:HG21	1:I:254:VAL:HA	1.83	0.59
1:F:172:LEU:HD21	1:F:272:ILE:CD1	2.32	0.59
1:P:274:PHE:O	1:P:275:ASP:CB	2.50	0.59
1:A:252:LEU:HG	1:A:283:VAL:CG1	2.25	0.59
1:F:72:ASN:HD22	1:F:72:ASN:C	2.05	0.59
1:A:60:THR:HG21	1:A:92:ASN:OD1	2.03	0.59
1:D:227:ILE:HD13	1:D:253:GLY:O	2.03	0.59
1:I:113:LEU:HD13	1:I:139:PRO:CD	2.33	0.59
1:P:288:THR:HB	1:P:327:PHE:HA	1.84	0.59
1:A:62:THR:HG23	1:A:117:VAL:HA	1.85	0.59
1:P:170:GLN:NE2	1:P:174:ASP:OD1	2.36	0.59
1:F:118:ASP:O	1:F:141:PRO:HD2	2.02	0.59
1:A:153:GLN:O	1:A:154:ILE:HD12	2.03	0.59
1:D:267:ASN:HA	1:D:332:LYS:NZ	2.18	0.59
1:P:288:THR:CG2	1:P:328:ARG:H	2.15	0.59
1:B:129:GLU:O	1:B:133:GLU:HG2	2.02	0.58
1:F:72:ASN:HD22	1:F:73:ILE:HD13	1.67	0.58
1:F:73:ILE:N	1:F:73:ILE:HD13	2.19	0.58
1:F:252:LEU:HG	1:F:283:VAL:HG11	1.84	0.58
1:A:71:SER:HB3	3:A:526:HOH:O	2.04	0.58
1:F:101:ASN:HD22	1:F:102:GLN:N	2.00	0.58
1:D:230:VAL:CG2	1:D:254:VAL:HA	2.34	0.58
1:I:270:GLU:OE1	1:I:332:LYS:HB2	2.03	0.58

*Continued on next page...*



*Continued from previous page...*

Atom-1	Atom-2	Interatomic distance (Å)	Clash overlap (Å)
1:P:85:ILE:CD1	1:P:299:ALA:HA	2.31	0.58
1:F:200:TYR:HE1	1:F:216:ILE:HD11	1.69	0.58
1:D:83:GLU:O	1:D:87:THR:HG23	2.03	0.58
1:A:228:GLU:O	1:A:232:LYS:HG3	2.04	0.58
1:I:270:GLU:CD	1:I:332:LYS:HB2	2.24	0.58
1:F:172:LEU:HD11	1:F:272:ILE:HD13	1.84	0.58
1:F:274:PHE:O	1:F:275:ASP:HB2	2.02	0.58
1:P:148:ILE:HD13	1:P:190:PRO:HB2	1.86	0.58
1:B:179:ASN:ND2	1:B:179:ASN:N	2.40	0.57
1:P:220:ASP:O	1:P:221:TYR:HB2	2.04	0.57
1:A:92:ASN:C	1:A:93:ILE:HD12	2.24	0.57
1:I:121:ILE:CD1	1:I:305:LEU:HD22	2.34	0.57
1:F:194:ALA:O	1:F:198:LYS:HD2	2.05	0.57
1:F:62:THR:HA	1:F:92:ASN:HB2	1.85	0.57
1:B:178:LYS:HE3	1:B:210:PRO:HG2	1.86	0.57
1:A:80:ARG:HH11	1:A:80:ARG:HG2	1.69	0.57
1:B:67:ILE:HD11	1:B:95:LEU:HD11	1.86	0.57
1:F:123:MET:HG2	1:F:145:ALA:O	2.04	0.57
1:B:197:VAL:HG12	1:B:201:LYS:HE2	1.87	0.57
1:I:207:SER:HB3	1:I:209:LEU:HD12	1.86	0.57
1:P:288:THR:HG21	1:P:331:THR:OG1	2.04	0.57
1:A:116:GLN:O	1:A:116:GLN:CG	2.52	0.56
1:D:224:ASP:O	1:D:228:GLU:HG2	2.05	0.56
1:B:70:ILE:N	1:B:97:ASN:ND2	2.50	0.56
1:P:129:GLU:HA	1:P:132:VAL:HG12	1.87	0.56
1:A:80:ARG:HG2	1:A:80:ARG:NH1	2.20	0.56
1:I:182:PHE:HD2	1:I:244:PHE:O	1.89	0.56
1:P:214:SER:HB2	1:P:236:GLU:OE2	2.05	0.56
1:F:67:ILE:HD13	1:F:67:ILE:H	1.71	0.56
1:F:70:ILE:H	1:F:97:ASN:ND2	2.03	0.56
1:B:136:LYS:HE3	1:B:153:GLN:HB3	1.87	0.56
1:B:128:THR:O	1:B:132:VAL:HG23	2.05	0.56
1:B:132:VAL:O	1:B:136:LYS:HB2	2.05	0.56
1:A:148:ILE:HG22	1:A:191:ILE:HG23	1.87	0.56
1:A:183:VAL:HG22	1:A:217:VAL:CG2	2.35	0.56
1:A:230:VAL:HG22	1:A:254:VAL:HA	1.88	0.56
1:I:65:VAL:HG13	1:I:95:LEU:HG	1.87	0.56
1:B:92:ASN:O	1:B:93:ILE:HD12	2.06	0.56
1:B:178:LYS:HG2	1:B:209:LEU:HD22	1.87	0.56
1:B:296:ASP:O	1:B:300:VAL:HG23	2.06	0.56
1:B:95:LEU:HD13	1:B:96:SER:N	2.21	0.56

*Continued on next page...*

*Continued from previous page...*

Atom-1	Atom-2	Interatomic distance (Å)	Clash overlap (Å)
1:B:160:ASP:OD2	1:B:163:GLN:HB2	2.07	0.55
1:F:128:THR:O	1:F:132:VAL:HG23	2.07	0.55
1:B:151:THR:HG21	1:B:153:GLN:NE2	2.21	0.55
1:B:191:ILE:HD12	1:B:191:ILE:N	2.07	0.55
1:I:110:ASN:HA	1:I:113:LEU:HD11	1.88	0.55
1:I:303:ARG:HG2	1:I:303:ARG:HH11	1.71	0.55
1:F:67:ILE:O	1:F:97:ASN:HA	2.07	0.55
1:P:172:LEU:HD21	1:P:272:ILE:CD1	2.35	0.55
1:F:274:PHE:O	1:F:275:ASP:CB	2.54	0.55
1:D:184:SER:OG	1:D:185:GLY:N	2.39	0.55
1:D:201:LYS:O	1:D:205:THR:HG23	2.06	0.55
1:B:273:GLY:N	1:B:287:LEU:HD11	2.21	0.55
1:F:98:SER:O	1:F:104:LYS:HD3	2.07	0.55
1:F:173:ILE:HD12	1:F:209:LEU:HD12	1.87	0.55
1:D:231:GLU:O	1:D:235:GLU:HG2	2.07	0.55
1:B:277:THR:CG2	1:B:278:ARG:N	2.70	0.55
1:I:187:LEU:HB2	1:I:218:GLU:OE2	2.06	0.55
1:I:59:LYS:HD2	1:I:60:THR:O	2.07	0.55
1:P:132:VAL:HG23	1:P:154:ILE:HG12	1.88	0.55
1:F:191:ILE:O	1:F:195:LYS:HB2	2.07	0.55
1:A:60:THR:CG2	1:A:92:ASN:OD1	2.55	0.55
1:I:269:LEU:HD13	1:I:271:ILE:CD1	2.36	0.55
1:F:101:ASN:C	1:F:101:ASN:ND2	2.56	0.55
1:D:302:MET:HE2	1:D:302:MET:HA	1.89	0.55
1:B:182:PHE:CZ	1:B:184:SER:HB2	2.42	0.55
1:I:187:LEU:HD13	1:I:218:GLU:HG3	1.88	0.55
1:I:273:GLY:HA3	1:I:287:LEU:HD21	1.89	0.55
1:P:132:VAL:HA	1:P:135:LEU:HB3	1.88	0.55
1:D:65:VAL:HG22	1:D:95:LEU:HD12	1.88	0.55
1:D:126:ASN:HD22	1:D:190:PRO:CD	2.19	0.55
1:B:198:LYS:NZ	1:B:202:ARG:HD3	2.22	0.55
1:B:215:TYR:CZ	1:B:240:PRO:HG3	2.41	0.55
1:F:318:ILE:O	1:F:318:ILE:CD1	2.55	0.54
1:I:89:TYR:O	1:I:90:LYS:HD3	2.07	0.54
1:A:143:VAL:HG13	1:A:305:LEU:HD13	1.89	0.54
1:B:70:ILE:HD11	1:I:70:ILE:HG13	1.88	0.54
1:D:97:ASN:O	1:D:104:LYS:HE2	2.07	0.54
1:P:288:THR:HG23	1:P:330:SER:HB2	1.88	0.54
1:D:291:VAL:HG21	1:D:324:ARG:NH1	2.23	0.54
1:B:274:PHE:O	1:B:275:ASP:CB	2.55	0.54
1:P:293:PRO:CB	1:P:296:ASP:HB2	2.37	0.54

*Continued on next page...*

*Continued from previous page...*

Atom-1	Atom-2	Interatomic distance (Å)	Clash overlap (Å)
1:P:169:VAL:HG21	1:P:200:TYR:HA	1.89	0.54
1:B:230:VAL:O	1:B:234:LEU:HG	2.07	0.54
1:B:293:PRO:O	1:B:297:ILE:HG13	2.06	0.54
1:P:83:GLU:CD	1:P:93:ILE:HG21	2.28	0.54
1:F:250:MET:O	1:F:254:VAL:HG23	2.07	0.54
1:F:288:THR:HG23	1:F:327:PHE:HA	1.90	0.54
1:D:164:ALA:HB1	1:D:290:VAL:HG11	1.89	0.54
1:B:230:VAL:HG13	1:B:254:VAL:HG22	1.90	0.54
1:I:128:THR:O	1:I:131:HIS:HB2	2.08	0.54
1:P:157:VAL:HG11	1:P:301:ALA:HB2	1.90	0.54
1:B:102:GLN:HG3	1:B:131:HIS:NE2	2.23	0.54
1:F:292:GLN:O	1:F:294:MET:N	2.40	0.54
1:A:69:ASP:HA	1:A:97:ASN:OD1	2.08	0.54
1:D:292:GLN:CG	1:D:292:GLN:O	2.56	0.54
1:P:156:SER:OG	1:P:318:ILE:HG23	2.08	0.54
1:D:169:VAL:O	1:D:173:ILE:HG12	2.07	0.53
1:B:255:ILE:HG12	1:B:271:ILE:HD13	1.90	0.53
1:P:318:ILE:N	1:P:318:ILE:HD12	2.22	0.53
1:B:101:ASN:O	1:B:105:GLU:HG3	2.08	0.53
1:I:78:LEU:HD13	1:I:123:MET:SD	2.48	0.53
1:I:135:LEU:HD23	1:I:154:ILE:CD1	2.38	0.53
1:P:112:MET:HB3	1:P:117:VAL:HG21	1.90	0.53
1:P:297:ILE:HD12	1:P:321:LEU:HD12	1.90	0.53
1:P:106:LEU:HD21	1:P:134:GLU:HB2	1.91	0.53
1:F:260:ASP:C	1:F:262:GLY:H	2.11	0.53
1:A:89:TYR:O	1:A:90:LYS:HB2	2.09	0.53
1:A:102:GLN:HG2	1:A:131:HIS:CE1	2.42	0.53
1:F:200:TYR:CE1	1:F:216:ILE:HD11	2.42	0.53
1:P:149:GLU:HG3	1:P:149:GLU:O	2.09	0.53
1:P:285:PRO:HB2	1:P:329:GLN:HB2	1.91	0.53
1:I:113:LEU:H	1:I:113:LEU:CD2	2.15	0.53
1:D:66:ILE:HB	1:D:122:PHE:CD2	2.44	0.53
1:D:274:PHE:O	1:D:275:ASP:CG	2.47	0.53
1:A:274:PHE:O	1:A:275:ASP:CB	2.57	0.53
1:B:112:MET:HA	1:B:112:MET:CE	2.39	0.53
1:B:120:ILE:H	1:B:305:LEU:HD11	1.72	0.53
1:B:288:THR:HG21	1:B:331:THR:OG1	2.08	0.53
1:F:212:ARG:NH1	1:F:238:GLU:HB2	2.23	0.53
1:B:220:ASP:OD1	1:B:222:THR:HB	2.08	0.53
1:B:70:ILE:H	1:B:97:ASN:HD22	1.57	0.52
1:P:247:THR:HG22	1:P:250:MET:H	1.74	0.52

*Continued on next page...*

*Continued from previous page...*

Atom-1	Atom-2	Interatomic distance (Å)	Clash overlap (Å)
1:F:264:ASN:H	1:F:268:ASP:HB2	1.73	0.52
1:B:284:ARG:HH21	1:B:286:GLN:HG3	1.74	0.52
1:A:68:PRO:CB	1:A:100:GLN:NE2	2.72	0.52
1:B:121:ILE:CD1	1:B:305:LEU:HD22	2.39	0.52
1:B:148:ILE:HG13	1:B:191:ILE:HG13	1.92	0.52
1:D:281:THR:CA	1:D:286:GLN:HE21	2.22	0.52
1:I:113:LEU:H	1:I:113:LEU:HD23	1.73	0.52
1:I:274:PHE:O	1:I:275:ASP:HB2	2.09	0.52
1:A:192:ASN:O	1:A:197:VAL:HG23	2.10	0.52
1:D:67:ILE:HD12	1:D:75:TYR:HB3	1.90	0.52
1:B:94:ILE:HG23	1:I:94:ILE:HG23	1.92	0.52
1:P:93:ILE:O	1:P:93:ILE:CG2	2.57	0.52
1:A:160:ASP:HB2	1:A:320:GLN:CD	2.30	0.52
1:D:157:VAL:HA	1:D:319:VAL:O	2.10	0.52
1:B:113:LEU:HD13	1:B:139:PRO:HD2	1.92	0.52
1:P:67:ILE:CD1	1:P:70:ILE:HD12	2.39	0.52
1:F:193:HIS:HD2	1:F:194:ALA:N	2.08	0.52
1:D:85:ILE:CD1	1:D:299:ALA:HB1	2.40	0.52
1:B:98:SER:CB	1:B:105:GLU:HG2	2.40	0.52
1:B:238:GLU:N	1:B:238:GLU:OE2	2.43	0.52
1:P:72:ASN:ND2	1:P:74:PHE:H	2.08	0.52
1:P:113:LEU:C	1:P:113:LEU:HD13	2.30	0.52
1:A:179:ASN:HA	3:A:552:HOH:O	2.10	0.51
1:B:126:ASN:ND2	1:B:190:PRO:HG2	2.25	0.51
1:B:211:VAL:HG12	1:B:211:VAL:O	2.09	0.51
1:B:267:ASN:HA	1:B:332:LYS:NZ	2.25	0.51
1:I:263:LEU:CD1	1:I:268:ASP:HB3	2.40	0.51
1:P:169:VAL:O	1:P:173:ILE:HG13	2.10	0.51
1:B:151:THR:CG2	1:B:153:GLN:HE21	2.24	0.51
1:I:263:LEU:HD11	1:I:268:ASP:HB3	1.92	0.51
1:I:266:PRO:HB2	1:I:270:GLU:HG2	1.92	0.51
1:P:255:ILE:HD13	1:P:271:ILE:HG13	1.92	0.51
1:D:302:MET:CE	1:D:305:LEU:HD23	2.40	0.51
1:I:89:TYR:O	1:I:90:LYS:CD	2.59	0.51
1:F:73:ILE:HD13	1:F:73:ILE:H	1.76	0.51
1:D:85:ILE:HD11	1:D:299:ALA:HB1	1.92	0.51
1:D:128:THR:O	1:D:131:HIS:HB2	2.11	0.51
1:B:222:THR:HG23	1:B:224:ASP:H	1.74	0.51
1:P:78:LEU:O	1:P:82:ILE:HG12	2.11	0.51
1:P:128:THR:HB	1:P:129:GLU:OE1	2.10	0.51
1:F:172:LEU:HD21	1:F:272:ILE:HD11	1.92	0.51

*Continued on next page...*

*Continued from previous page...*

Atom-1	Atom-2	Interatomic distance (Å)	Clash overlap (Å)
1:B:73:ILE:HG13	1:B:279:LEU:HG	1.93	0.51
1:B:164:ALA:HB1	1:B:290:VAL:HG11	1.93	0.51
1:F:135:LEU:HD12	1:F:142:VAL:HG11	1.92	0.51
1:B:67:ILE:HG23	1:B:123:MET:CE	2.41	0.51
1:B:120:ILE:O	1:B:142:VAL:HA	2.11	0.51
1:B:212:ARG:NH2	1:B:238:GLU:HG3	2.26	0.51
1:F:101:ASN:O	1:F:105:GLU:HG3	2.11	0.51
1:D:66:ILE:HD13	1:D:96:SER:HB2	1.92	0.50
1:B:270:GLU:OE2	1:B:332:LYS:HB2	2.11	0.50
1:D:191:ILE:HG23	1:D:192:ASN:ND2	2.25	0.50
1:I:72:ASN:C	1:I:72:ASN:ND2	2.65	0.50
1:P:68:PRO:HB3	1:P:100:GLN:HE22	1.76	0.50
1:P:182:PHE:CZ	1:P:184:SER:HB2	2.45	0.50
1:D:146:ALA:HA	1:D:158:THR:HG22	1.93	0.50
1:I:169:VAL:HA	1:I:172:LEU:HD12	1.93	0.50
1:P:151:THR:HB	1:P:153:GLN:HG2	1.94	0.50
1:D:230:VAL:HG21	1:D:254:VAL:HA	1.94	0.50
1:I:233:LEU:C	1:I:235:GLU:H	2.14	0.50
1:P:231:GLU:CG	1:P:261:ARG:HH12	2.06	0.50
1:A:228:GLU:HG3	1:A:232:LYS:HE3	1.92	0.50
1:I:149:GLU:OE1	1:I:154:ILE:HG12	2.11	0.50
1:F:62:THR:HG22	1:F:92:ASN:HB2	1.93	0.50
1:A:146:ALA:HA	1:A:158:THR:HG22	1.94	0.50
1:B:131:HIS:O	1:B:135:LEU:HD22	2.12	0.50
1:B:148:ILE:HD12	1:B:148:ILE:O	2.11	0.50
1:P:93:ILE:O	1:P:93:ILE:HG23	2.12	0.50
1:P:104:LYS:O	1:P:108:LEU:HG	2.12	0.50
1:A:77:GLU:HB3	1:A:294:MET:CE	2.41	0.50
1:D:66:ILE:HD12	1:D:108:LEU:HB3	1.94	0.50
1:B:112:MET:HB3	1:B:120:ILE:HD11	1.93	0.50
1:B:198:LYS:O	1:B:202:ARG:HG3	2.12	0.50
1:P:89:TYR:O	1:P:90:LYS:HG2	2.12	0.50
1:P:113:LEU:CG	1:P:139:PRO:HG3	2.36	0.50
1:P:324:ARG:NH2	1:P:326:GLU:OE1	2.45	0.50
1:B:95:LEU:HD13	1:B:96:SER:H	1.77	0.50
1:I:128:THR:O	1:I:132:VAL:HG12	2.12	0.50
1:B:215:TYR:CE2	1:B:240:PRO:HG3	2.47	0.50
1:A:128:THR:O	1:A:132:VAL:HG23	2.12	0.49
1:A:300:VAL:CG2	1:A:321:LEU:HD11	2.42	0.49
1:D:163:GLN:NE2	1:D:202:ARG:HH22	2.10	0.49
1:D:234:LEU:O	1:D:239:LYS:HE2	2.12	0.49

*Continued on next page...*

*Continued from previous page...*

Atom-1	Atom-2	Interatomic distance (Å)	Clash overlap (Å)
1:B:70:ILE:H	1:B:97:ASN:HD21	1.58	0.49
1:I:157:VAL:HG11	1:I:301:ALA:HB2	1.92	0.49
1:P:307:LYS:HB3	1:P:312:GLU:HB2	1.93	0.49
1:D:230:VAL:HG22	1:D:254:VAL:HG13	1.93	0.49
1:P:192:ASN:C	1:P:197:VAL:HG23	2.33	0.49
1:F:149:GLU:OE1	1:F:151:THR:HB	2.11	0.49
1:B:238:GLU:O	1:B:238:GLU:HG2	2.12	0.49
1:I:287:LEU:HA	1:I:330:SER:HB3	1.94	0.49
1:P:285:PRO:HB2	1:P:329:GLN:HB3	1.93	0.49
1:F:64:GLY:HA3	1:F:112:MET:CE	2.42	0.49
1:F:197:VAL:HG13	1:F:198:LYS:N	2.26	0.49
1:B:70:ILE:CG2	1:B:97:ASN:HD21	2.25	0.49
1:A:162:GLU:OE2	1:A:202:ARG:NH1	2.42	0.49
1:A:248:ASP:O	1:A:251:ALA:HB3	2.11	0.49
1:B:65:VAL:HG13	1:B:121:ILE:HB	1.95	0.49
1:I:67:ILE:HG22	1:I:123:MET:HE2	1.94	0.49
1:P:220:ASP:OD1	1:P:225:SER:HB3	2.13	0.49
1:P:66:ILE:HB	1:P:122:PHE:HD2	1.77	0.49
1:B:121:ILE:HD12	1:B:305:LEU:HD22	1.95	0.49
1:P:267:ASN:HA	1:P:332:LYS:HE3	1.95	0.49
1:F:271:ILE:CD1	1:F:287:LEU:HD13	2.42	0.49
1:I:182:PHE:CZ	1:I:184:SER:HB2	2.47	0.49
1:P:151:THR:HG21	1:P:153:GLN:CD	2.33	0.49
1:A:86:ALA:HB1	1:A:93:ILE:HD11	1.94	0.49
1:D:66:ILE:HD11	1:D:112:MET:HG3	1.94	0.49
1:F:101:ASN:ND2	1:F:103:ASP:N	2.60	0.49
1:F:108:LEU:O	1:F:112:MET:HG2	2.12	0.49
1:F:159:ILE:HD11	1:F:161:TYR:CD2	2.48	0.49
1:F:255:ILE:CD1	1:F:265:VAL:HG11	2.43	0.49
1:I:166:PHE:CE2	1:I:203:ALA:HA	2.48	0.48
1:A:179:ASN:HB2	1:A:215:TYR:HE2	1.78	0.48
1:B:101:ASN:HD21	1:B:103:ASP:HB2	1.78	0.48
1:B:212:ARG:O	1:B:215:TYR:HB2	2.13	0.48
1:B:238:GLU:CD	1:B:238:GLU:H	2.16	0.48
1:B:264:ASN:O	1:B:268:ASP:HB2	2.13	0.48
1:I:62:THR:HB	1:I:92:ASN:HB2	1.94	0.48
1:I:164:ALA:HB1	1:I:290:VAL:HG11	1.95	0.48
1:I:197:VAL:HG22	1:I:201:LYS:HD3	1.95	0.48
1:P:162:GLU:HG3	1:P:163:GLN:N	2.28	0.48
1:P:251:ALA:O	1:P:255:ILE:HG12	2.11	0.48
1:F:216:ILE:HG22	1:F:216:ILE:O	2.11	0.48

*Continued on next page...*

*Continued from previous page...*

Atom-1	Atom-2	Interatomic distance (Å)	Clash overlap (Å)
1:A:148:ILE:HD12	1:A:190:PRO:CB	2.43	0.48
1:A:303:ARG:O	1:A:307:LYS:HG3	2.13	0.48
1:I:274:PHE:O	1:I:275:ASP:CB	2.61	0.48
1:F:62:THR:HG22	1:F:92:ASN:OD1	2.12	0.48
1:A:113:LEU:HD21	1:A:139:PRO:HD2	1.95	0.48
1:A:230:VAL:HG21	1:A:254:VAL:HA	1.95	0.48
1:I:101:ASN:ND2	1:I:103:ASP:HB2	2.28	0.48
1:P:223:TYR:CD2	1:F:282:MET:HG2	2.48	0.48
1:F:96:SER:OG	1:F:108:LEU:HD22	2.14	0.48
1:D:144:LEU:HG	1:D:154:ILE:HG21	1.95	0.48
1:B:277:THR:HG23	1:B:278:ARG:N	2.29	0.48
1:A:288:THR:CG2	1:A:328:ARG:H	2.26	0.48
1:P:67:ILE:HD12	1:P:67:ILE:O	2.14	0.48
1:P:89:TYR:OH	1:P:303:ARG:HG2	2.14	0.48
1:D:261:ARG:HG3	1:D:261:ARG:HH11	1.79	0.48
1:B:98:SER:HB2	1:B:105:GLU:HG2	1.96	0.48
1:B:99:ASP:O	1:B:100:GLN:HB2	2.13	0.48
1:P:106:LEU:HD11	1:P:134:GLU:OE1	2.14	0.48
1:P:112:MET:O	1:P:117:VAL:HG22	2.13	0.48
1:D:219:GLY:HA3	1:D:250:MET:HE3	1.95	0.48
1:I:269:LEU:HD13	1:I:271:ILE:HD11	1.96	0.48
1:P:314:VAL:HG12	1:P:315:ASP:O	2.14	0.48
1:F:166:PHE:CE2	1:F:203:ALA:HA	2.49	0.48
1:A:72:ASN:HA	3:A:505:HOH:O	2.13	0.47
1:B:183:VAL:HG23	1:B:243:ILE:HG21	1.95	0.47
1:B:197:VAL:CG1	1:B:201:LYS:HE2	2.44	0.47
1:D:129:GLU:O	1:D:132:VAL:HG22	2.13	0.47
1:A:62:THR:HB	1:A:92:ASN:HB2	1.97	0.47
1:B:111:ASN:ND2	1:I:92:ASN:HD22	2.11	0.47
1:P:102:GLN:NE2	1:P:128:THR:HG21	2.28	0.47
1:F:169:VAL:HG11	1:F:200:TYR:HA	1.96	0.47
1:D:288:THR:H	1:D:330:SER:HB3	1.80	0.47
1:I:101:ASN:HB3	1:I:104:LYS:HB2	1.95	0.47
1:P:288:THR:HG22	1:P:328:ARG:N	2.25	0.47
1:F:304:LEU:HD11	1:F:314:VAL:CG1	2.44	0.47
1:A:172:LEU:HD11	1:A:272:ILE:CD1	2.45	0.47
1:B:111:ASN:HD21	1:I:92:ASN:ND2	2.11	0.47
1:B:113:LEU:HD22	1:B:140:VAL:HG22	1.96	0.47
1:B:208:GLY:O	1:B:209:LEU:HD23	2.14	0.47
1:I:111:ASN:O	1:I:115:LYS:HD2	2.15	0.47
1:A:225:SER:O	1:A:228:GLU:HG2	2.15	0.47

*Continued on next page...*

*Continued from previous page...*

Atom-1	Atom-2	Interatomic distance (Å)	Clash overlap (Å)
1:I:83:GLU:O	1:I:87:THR:HG23	2.13	0.47
1:F:158:THR:O	1:F:320:GLN:HA	2.15	0.47
1:F:219:GLY:HA3	1:F:250:MET:CE	2.44	0.47
1:A:76:ALA:HB1	1:D:71:SER:HA	1.96	0.47
1:A:94:ILE:HD11	1:D:115:LYS:NZ	2.30	0.47
1:A:157:VAL:HA	1:A:319:VAL:O	2.15	0.47
1:D:172:LEU:HD21	1:D:272:ILE:HD13	1.97	0.47
1:D:174:ASP:C	1:D:176:GLY:H	2.18	0.47
1:D:182:PHE:HE1	1:D:197:VAL:HG22	1.80	0.47
1:B:73:ILE:CD1	1:I:278:ARG:HH22	2.28	0.47
1:B:102:GLN:HG3	1:B:131:HIS:CE1	2.49	0.47
1:B:182:PHE:HD2	1:B:244:PHE:O	1.98	0.47
1:B:208:GLY:HA2	3:B:538:HOH:O	2.14	0.47
1:I:101:ASN:O	1:I:105:GLU:HG3	2.15	0.47
1:I:109:LEU:HD11	1:I:142:VAL:HG21	1.96	0.47
1:P:187:LEU:O	1:P:193:HIS:HB3	2.15	0.47
1:P:189:GLU:HB2	1:P:191:ILE:HG22	1.96	0.47
1:F:308:TYR:O	1:F:311:LYS:N	2.34	0.47
1:P:69:ASP:OD2	1:P:71:SER:HB3	2.14	0.47
1:P:115:LYS:O	1:F:115:LYS:HE3	2.14	0.47
1:P:227:ILE:O	1:P:230:VAL:HG23	2.15	0.47
1:A:148:ILE:HD13	1:A:148:ILE:C	2.36	0.47
1:A:182:PHE:CE1	1:A:184:SER:HB3	2.50	0.47
1:D:106:LEU:HD22	1:D:110:ASN:HD21	1.79	0.47
1:D:202:ARG:O	1:D:206:GLU:HG3	2.14	0.47
1:B:246:GLY:O	1:B:274:PHE:HB3	2.15	0.47
1:P:106:LEU:HD13	1:P:106:LEU:O	2.14	0.47
1:F:78:LEU:HD21	1:F:297:ILE:HG22	1.97	0.47
1:F:271:ILE:HG12	1:F:272:ILE:N	2.29	0.47
1:I:101:ASN:HD22	1:I:104:LYS:H	1.62	0.47
1:I:121:ILE:HD11	1:I:302:MET:HE3	1.96	0.47
1:P:116:GLN:HE21	1:P:116:GLN:HB3	1.55	0.47
1:P:166:PHE:CE2	1:P:203:ALA:HA	2.49	0.47
1:F:90:LYS:HB2	1:F:90:LYS:NZ	2.30	0.47
1:D:117:VAL:O	1:D:140:VAL:HG11	2.16	0.46
1:A:86:ALA:CB	1:A:93:ILE:HD11	2.45	0.46
1:D:274:PHE:O	1:D:275:ASP:CB	2.64	0.46
1:B:70:ILE:HG22	1:B:97:ASN:ND2	2.30	0.46
1:I:157:VAL:CG1	1:I:301:ALA:HB2	2.46	0.46
1:P:79:ALA:O	1:P:82:ILE:HB	2.15	0.46
1:F:173:ILE:HD12	1:F:209:LEU:CD1	2.45	0.46

*Continued on next page...*



*Continued from previous page...*

Atom-1	Atom-2	Interatomic distance (Å)	Clash overlap (Å)
1:D:185:GLY:O	1:D:186:THR:C	2.53	0.46
1:D:191:ILE:O	1:D:195:LYS:HB2	2.15	0.46
1:B:244:PHE:HD1	1:B:272:ILE:HG23	1.80	0.46
1:B:303:ARG:HH21	2:B:5256:171:HN	1.63	0.46
1:P:72:ASN:C	1:P:72:ASN:ND2	2.67	0.46
1:P:186:THR:HG22	1:P:188:GLU:H	1.81	0.46
1:F:74:PHE:HA	1:F:294:MET:HE1	1.98	0.46
1:A:146:ALA:CA	1:A:158:THR:HG22	2.46	0.46
1:A:173:ILE:HD13	1:A:180:ILE:CD1	2.46	0.46
1:A:201:LYS:O	1:A:205:THR:HG23	2.15	0.46
1:A:282:MET:HG2	1:D:223:TYR:CG	2.50	0.46
1:D:219:GLY:HA3	1:D:250:MET:CE	2.45	0.46
1:B:184:SER:OG	1:B:185:GLY:N	2.48	0.46
1:B:288:THR:HG23	1:B:330:SER:OG	2.16	0.46
1:P:67:ILE:HG22	1:P:123:MET:SD	2.56	0.46
1:D:65:VAL:HA	1:D:121:ILE:O	2.16	0.46
1:I:101:ASN:HD21	1:I:103:ASP:HB2	1.80	0.46
1:F:223:TYR:CE2	1:F:227:ILE:HD11	2.51	0.46
1:F:261:ARG:HB3	1:F:261:ARG:HH11	1.80	0.46
1:A:173:ILE:HD12	1:A:209:LEU:CD1	2.45	0.46
1:A:233:LEU:O	1:A:236:GLU:HB2	2.16	0.46
1:A:314:VAL:HG11	1:A:317:SER:HA	1.98	0.46
1:I:72:ASN:HD22	1:I:72:ASN:C	2.17	0.46
1:P:129:GLU:HA	1:P:132:VAL:CG1	2.46	0.46
1:F:73:ILE:H	1:F:73:ILE:CD1	2.29	0.46
1:D:169:VAL:HG23	1:D:180:ILE:HG21	1.98	0.46
1:I:121:ILE:HD12	1:I:305:LEU:HD22	1.98	0.46
1:P:122:PHE:O	1:P:144:LEU:HA	2.16	0.46
1:P:280:SER:HB3	1:P:328:ARG:NH1	2.30	0.46
1:F:66:ILE:HB	1:F:122:PHE:HD2	1.80	0.46
1:A:186:THR:HG22	1:A:188:GLU:CD	2.35	0.46
1:I:61:THR:HB	1:I:91:TYR:CD1	2.51	0.46
1:F:327:PHE:HD2	1:F:331:THR:HG21	1.81	0.46
1:I:72:ASN:ND2	1:I:74:PHE:H	2.14	0.46
1:F:151:THR:CG2	1:F:153:GLN:HG2	2.44	0.46
1:D:189:GLU:HA	1:D:190:PRO:HD3	1.86	0.46
1:B:73:ILE:HD13	1:B:73:ILE:N	2.19	0.46
1:I:177:HIS:ND1	1:I:241:THR:HB	2.30	0.46
1:I:252:LEU:HG	1:I:283:VAL:HG13	1.96	0.46
1:P:307:LYS:CE	1:P:314:VAL:HG21	2.46	0.46
1:A:153:GLN:HB3	3:A:541:HOH:O	2.17	0.45

*Continued on next page...*

*Continued from previous page...*

Atom-1	Atom-2	Interatomic distance (Å)	Clash overlap (Å)
1:D:220:ASP:O	1:D:221:TYR:HB2	2.16	0.45
1:I:79:ALA:HB1	1:I:95:LEU:HD21	1.98	0.45
1:F:98:SER:O	1:F:99:ASP:HB2	2.15	0.45
1:F:182:PHE:HB2	1:F:200:TYR:CE2	2.50	0.45
1:A:94:ILE:HG23	1:D:94:ILE:HG23	1.98	0.45
1:I:242:ALA:HA	1:I:270:GLU:O	2.16	0.45
1:A:77:GLU:HB3	1:A:294:MET:HE3	1.97	0.45
1:B:123:MET:HG2	1:B:145:ALA:HB3	1.99	0.45
1:I:179:ASN:HB3	1:I:215:TYR:OH	2.15	0.45
1:D:68:PRO:HB3	1:D:100:GLN:HG3	1.99	0.45
1:D:318:ILE:O	1:D:318:ILE:HD13	2.16	0.45
1:B:189:GLU:HB2	1:B:192:ASN:HD22	1.80	0.45
1:F:287:LEU:HD12	1:F:288:THR:N	2.32	0.45
1:D:250:MET:O	1:D:254:VAL:HG23	2.16	0.45
1:B:178:LYS:HA	1:B:209:LEU:HD13	1.97	0.45
1:B:319:VAL:HG12	1:B:320:GLN:H	1.81	0.45
1:D:266:PRO:HD3	1:D:329:GLN:O	2.16	0.45
1:B:220:ASP:O	1:B:221:TYR:HB2	2.17	0.45
1:F:83:GLU:O	1:F:87:THR:HG23	2.16	0.45
1:A:136:LYS:HE3	1:A:153:GLN:HE21	1.81	0.45
1:B:134:GLU:O	1:B:137:LYS:HG2	2.17	0.45
1:I:112:MET:HE2	1:I:115:LYS:HD3	1.97	0.45
1:F:190:PRO:O	1:F:194:ALA:HB3	2.16	0.45
1:D:287:LEU:HA	1:D:330:SER:HB2	1.99	0.45
1:B:230:VAL:CG2	1:B:257:GLY:HA3	2.44	0.45
1:B:252:LEU:HG	1:B:283:VAL:HG11	1.96	0.45
1:D:292:GLN:O	1:D:292:GLN:HG3	2.17	0.45
1:B:135:LEU:HD23	1:B:136:LYS:N	2.31	0.45
1:P:132:VAL:HG23	1:P:154:ILE:CG1	2.47	0.45
1:A:113:LEU:HD21	1:A:140:VAL:HG22	1.99	0.44
1:A:175:SER:HB2	1:A:177:HIS:HD2	1.81	0.44
1:A:179:ASN:HB3	1:A:212:ARG:HH21	1.81	0.44
1:P:112:MET:O	1:P:117:VAL:HG13	2.17	0.44
1:P:303:ARG:O	1:P:307:LYS:HG3	2.17	0.44
1:D:108:LEU:O	1:D:112:MET:HG2	2.16	0.44
1:D:144:LEU:HB2	1:D:156:SER:HB3	1.99	0.44
1:B:264:ASN:OD1	1:B:264:ASN:C	2.55	0.44
1:F:91:TYR:CE1	1:F:309:MET:HE1	2.53	0.44
1:F:307:LYS:O	1:F:312:GLU:HB2	2.17	0.44
1:B:255:ILE:HG22	1:B:259:GLN:OE1	2.17	0.44
1:P:187:LEU:HB2	1:P:218:GLU:OE2	2.18	0.44

*Continued on next page...*

*Continued from previous page...*

Atom-1	Atom-2	Interatomic distance (Å)	Clash overlap (Å)
1:P:108:LEU:O	1:P:112:MET:HG2	2.17	0.44
1:P:317:SER:HB3	1:P:318:ILE:HD12	2.00	0.44
1:F:123:MET:CG	1:F:145:ALA:HB3	2.47	0.44
1:F:305:LEU:HG	1:F:309:MET:HG3	2.00	0.44
1:B:78:LEU:HD13	1:B:123:MET:SD	2.57	0.44
1:I:190:PRO:HA	1:I:193:HIS:CE1	2.51	0.44
1:A:112:MET:CE	1:A:117:VAL:HG11	2.48	0.44
1:B:70:ILE:HG22	1:B:97:ASN:HD21	1.81	0.44
1:B:264:ASN:OD1	1:B:267:ASN:HB2	2.17	0.44
1:I:269:LEU:HD13	1:I:271:ILE:HD12	1.99	0.44
1:F:307:LYS:NZ	1:F:313:THR:O	2.35	0.44
1:D:169:VAL:HG13	1:D:203:ALA:CB	2.48	0.44
1:P:162:GLU:OE2	1:P:202:ARG:NH1	2.50	0.44
1:F:91:TYR:CE1	1:F:309:MET:CE	3.01	0.44
1:F:226:GLY:O	1:F:254:VAL:HG22	2.18	0.44
1:B:305:LEU:O	1:B:309:MET:HG3	2.18	0.44
1:I:185:GLY:HA3	1:I:221:TYR:CE2	2.53	0.44
1:I:245:VAL:HG11	1:I:251:ALA:N	2.32	0.44
1:A:217:VAL:HG21	1:A:229:ALA:HB1	2.00	0.44
1:B:284:ARG:HH11	1:I:256:HIS:HB3	1.82	0.44
1:P:183:VAL:HB	1:P:245:VAL:HG22	2.00	0.44
1:F:264:ASN:OD1	1:F:267:ASN:HB2	2.18	0.44
1:B:159:ILE:CG1	1:B:323:HIS:HB3	2.47	0.43
1:B:193:HIS:ND1	1:B:194:ALA:N	2.65	0.43
1:F:287:LEU:HA	1:F:330:SER:HB3	2.00	0.43
1:F:325:ILE:N	1:F:325:ILE:HD12	2.33	0.43
1:B:196:LYS:O	1:B:197:VAL:C	2.57	0.43
1:F:129:GLU:CD	1:F:130:GLU:H	2.22	0.43
1:F:212:ARG:HH12	1:F:238:GLU:HB2	1.83	0.43
1:D:223:TYR:CE1	1:D:253:GLY:HA2	2.53	0.43
1:B:109:LEU:O	1:B:113:LEU:HG	2.18	0.43
1:B:315:ASP:O	1:B:316:SER:HB2	2.19	0.43
1:I:220:ASP:OD2	1:I:225:SER:HB3	2.18	0.43
1:P:204:LEU:O	1:P:205:THR:C	2.55	0.43
1:A:101:ASN:OD1	1:A:101:ASN:O	2.37	0.43
1:A:128:THR:O	1:A:131:HIS:HB2	2.17	0.43
1:A:212:ARG:HD2	1:A:215:TYR:CD1	2.53	0.43
1:I:158:THR:OG1	1:I:159:ILE:N	2.51	0.43
1:I:241:THR:C	1:I:269:LEU:HD23	2.38	0.43
1:P:284:ARG:HG2	1:P:284:ARG:HH11	1.83	0.43
1:A:101:ASN:OD1	1:A:103:ASP:HB2	2.18	0.43

*Continued on next page...*

*Continued from previous page...*

Atom-1	Atom-2	Interatomic distance (Å)	Clash overlap (Å)
1:D:204:LEU:HD12	1:D:209:LEU:HD12	1.99	0.43
1:I:89:TYR:O	1:I:90:LYS:CG	2.66	0.43
1:P:151:THR:HG22	1:P:151:THR:O	2.19	0.43
1:P:306:THR:HA	1:P:309:MET:CE	2.48	0.43
1:F:243:ILE:HG13	1:F:269:LEU:HD21	1.99	0.43
1:A:255:ILE:O	1:A:259:GLN:HG3	2.18	0.43
1:D:144:LEU:HG	1:D:154:ILE:CG2	2.49	0.43
1:B:174:ASP:OD1	1:B:174:ASP:N	2.51	0.43
1:B:286:GLN:O	1:B:328:ARG:HB2	2.19	0.43
1:B:310:ASN:O	1:B:311:LYS:HB2	2.17	0.43
1:F:163:GLN:O	1:F:166:PHE:HB3	2.19	0.43
1:F:181:ALA:HA	1:F:215:TYR:HB3	2.00	0.43
1:A:187:LEU:O	1:A:193:HIS:HB3	2.18	0.43
1:D:281:THR:CB	1:D:286:GLN:HE21	2.32	0.43
1:B:66:ILE:HG13	1:B:122:PHE:HD2	1.84	0.43
1:B:276:ASN:HB2	1:B:291:VAL:HA	1.99	0.43
1:I:72:ASN:ND2	1:I:73:ILE:N	2.64	0.43
1:I:241:THR:O	1:I:269:LEU:HD23	2.19	0.43
1:D:131:HIS:O	1:D:135:LEU:HB2	2.18	0.43
1:B:148:ILE:CG1	1:B:191:ILE:HG13	2.48	0.43
1:P:94:ILE:HD11	1:F:94:ILE:CD1	2.40	0.43
1:A:164:ALA:HB1	1:A:290:VAL:HG11	2.01	0.43
1:F:232:LYS:O	1:F:235:GLU:HB2	2.19	0.43
1:A:117:VAL:O	1:A:140:VAL:HG11	2.18	0.42
1:D:106:LEU:HD22	1:D:110:ASN:ND2	2.34	0.42
1:D:223:TYR:OH	1:D:256:HIS:CD2	2.69	0.42
1:F:190:PRO:HA	1:F:193:HIS:NE2	2.33	0.42
1:F:270:GLU:HB2	1:F:331:THR:HA	2.01	0.42
1:A:179:ASN:HB2	1:A:215:TYR:CE2	2.54	0.42
1:D:121:ILE:CD1	1:D:302:MET:HG2	2.49	0.42
1:I:138:SER:HA	1:I:139:PRO:HD3	1.84	0.42
1:P:222:THR:HG22	1:P:224:ASP:H	1.84	0.42
1:B:159:ILE:HG23	1:B:161:TYR:CE2	2.55	0.42
1:P:67:ILE:HG22	1:P:123:MET:CE	2.49	0.42
1:P:182:PHE:HD2	1:P:244:PHE:CD2	2.36	0.42
1:P:266:PRO:HB3	1:P:330:SER:O	2.19	0.42
1:F:255:ILE:HD11	1:F:271:ILE:HD12	2.02	0.42
1:D:166:PHE:CD1	1:D:166:PHE:C	2.92	0.42
1:B:97:ASN:O	1:B:108:LEU:HD11	2.20	0.42
1:I:117:VAL:O	1:I:140:VAL:HG11	2.20	0.42
1:P:241:THR:O	1:P:269:LEU:HA	2.20	0.42

*Continued on next page...*

*Continued from previous page...*

Atom-1	Atom-2	Interatomic distance (Å)	Clash overlap (Å)
1:A:169:VAL:O	1:A:173:ILE:HG12	2.20	0.42
1:B:222:THR:CG2	1:B:224:ASP:H	2.33	0.42
1:B:319:VAL:CG1	1:B:320:GLN:N	2.82	0.42
1:P:282:MET:HG2	1:F:223:TYR:CG	2.55	0.42
1:F:215:TYR:C	1:F:216:ILE:HD12	2.40	0.42
1:A:305:LEU:O	1:A:309:MET:HE2	2.19	0.42
1:F:197:VAL:CG1	1:F:198:LYS:N	2.82	0.42
1:B:159:ILE:HG12	1:B:160:ASP:H	1.85	0.42
1:B:245:VAL:HG12	1:B:247:THR:H	1.84	0.42
1:B:254:VAL:HG12	1:B:271:ILE:HG12	2.01	0.42
1:I:190:PRO:O	1:I:194:ALA:HB3	2.20	0.42
1:F:73:ILE:N	1:F:73:ILE:CD1	2.83	0.42
1:F:123:MET:HG2	1:F:145:ALA:HB3	2.01	0.42
1:F:267:ASN:OD1	1:F:332:LYS:HE3	2.20	0.42
1:B:63:VAL:HG22	1:B:93:ILE:CD1	2.50	0.42
1:I:61:THR:H	1:I:90:LYS:NZ	2.17	0.42
1:P:267:ASN:HD22	1:P:332:LYS:CE	2.33	0.42
1:F:220:ASP:O	1:F:221:TYR:HB2	2.20	0.42
1:F:252:LEU:HG	1:F:283:VAL:HG13	2.01	0.42
1:F:264:ASN:O	1:F:268:ASP:HB2	2.19	0.42
1:A:227:ILE:O	1:A:230:VAL:HG23	2.20	0.42
1:D:182:PHE:CZ	1:D:184:SER:HB2	2.54	0.42
1:B:328:ARG:HG2	1:B:328:ARG:HH11	1.84	0.42
1:A:148:ILE:HD12	1:A:190:PRO:HB3	2.02	0.42
1:D:82:ILE:HG23	1:D:121:ILE:HD12	2.00	0.42
1:D:149:GLU:HG3	1:D:149:GLU:O	2.19	0.42
1:B:168:ALA:O	1:B:171:SER:HB3	2.19	0.42
1:B:303:ARG:HE	1:B:303:ARG:HB2	1.65	0.42
1:P:248:ASP:OD1	1:P:277:THR:HG22	2.19	0.42
1:A:148:ILE:HD12	1:A:190:PRO:HB2	2.02	0.41
1:D:191:ILE:HD11	1:D:196:LYS:HE3	2.02	0.41
1:B:122:PHE:CZ	1:B:124:SER:HB2	2.55	0.41
1:I:112:MET:HA	1:I:115:LYS:CD	2.49	0.41
1:I:202:ARG:O	1:I:206:GLU:HG3	2.19	0.41
1:P:277:THR:HG23	1:P:278:ARG:N	2.34	0.41
1:A:321:LEU:HD23	1:A:322:PRO:HD2	2.01	0.41
1:B:321:LEU:HD13	1:B:322:PRO:HD2	2.01	0.41
1:I:90:LYS:HD3	1:I:90:LYS:C	2.41	0.41
1:P:154:ILE:HD13	1:P:154:ILE:HA	1.93	0.41
1:P:295:TYR:HB3	3:P:593:HOH:O	2.20	0.41
1:D:64:GLY:O	1:D:120:ILE:HA	2.20	0.41

*Continued on next page...*

*Continued from previous page...*

Atom-1	Atom-2	Interatomic distance (Å)	Clash overlap (Å)
1:D:246:GLY:O	1:D:274:PHE:HB3	2.20	0.41
1:P:105:GLU:O	1:P:109:LEU:HB2	2.20	0.41
1:P:120:ILE:O	1:P:142:VAL:HA	2.20	0.41
1:F:219:GLY:HA3	1:F:250:MET:HE1	2.02	0.41
1:A:236:GLU:O	1:A:237:ASP:C	2.58	0.41
1:A:315:ASP:OD1	1:A:315:ASP:N	2.50	0.41
1:D:212:ARG:HB3	1:D:215:TYR:HB2	2.03	0.41
1:B:263:LEU:HD13	1:B:269:LEU:HD22	2.03	0.41
1:B:267:ASN:HA	1:B:332:LYS:HZ2	1.86	0.41
1:I:185:GLY:HA2	1:I:250:MET:HE1	2.02	0.41
1:F:304:LEU:HD11	1:F:314:VAL:HG11	2.01	0.41
1:F:324:ARG:HG2	1:F:325:ILE:H	1.85	0.41
1:D:257:GLY:O	1:D:261:ARG:HG2	2.20	0.41
1:B:209:LEU:HA	1:B:210:PRO:HD3	1.84	0.41
1:B:277:THR:HG22	1:B:279:LEU:HB2	2.03	0.41
1:I:308:TYR:C	1:I:310:ASN:H	2.22	0.41
1:A:148:ILE:HG13	1:A:195:LYS:CE	2.51	0.41
1:D:93:ILE:C	1:D:94:ILE:HD12	2.41	0.41
1:D:157:VAL:HB	1:D:319:VAL:HB	2.01	0.41
1:B:285:PRO:HB2	1:B:329:GLN:HB2	2.03	0.41
1:F:169:VAL:O	1:F:173:ILE:HG12	2.21	0.41
1:F:173:ILE:HG21	1:F:207:SER:OG	2.20	0.41
1:B:135:LEU:HD23	1:B:135:LEU:C	2.41	0.41
1:B:241:THR:O	1:B:269:LEU:HA	2.21	0.41
1:F:61:THR:HB	1:F:118:ASP:OD1	2.21	0.41
1:D:89:TYR:O	1:D:90:LYS:HB2	2.19	0.41
1:I:161:TYR:CD1	1:I:191:ILE:HD13	2.56	0.41
1:I:230:VAL:HG22	1:I:254:VAL:HG13	2.01	0.41
1:F:189:GLU:HA	1:F:190:PRO:HD2	1.79	0.41
1:A:66:ILE:HG21	1:A:108:LEU:HD13	2.03	0.41
1:A:115:LYS:HA	1:A:115:LYS:HD3	1.85	0.41
1:A:304:LEU:O	1:A:308:TYR:CD2	2.73	0.41
1:B:272:ILE:HG23	1:B:272:ILE:O	2.20	0.41
1:I:80:ARG:HD2	1:I:80:ARG:HA	1.90	0.41
1:P:269:LEU:HG	1:P:271:ILE:HD11	2.02	0.41
1:P:305:LEU:O	1:P:309:MET:HG3	2.20	0.41
1:F:113:LEU:HD22	1:F:139:PRO:HG2	2.03	0.41
1:A:151:THR:O	1:A:152:ASN:HB2	2.20	0.41
1:D:261:ARG:HG3	1:D:261:ARG:NH1	2.35	0.41
1:B:66:ILE:HG13	1:B:66:ILE:O	2.21	0.41
1:B:66:ILE:CG1	1:B:122:PHE:HD2	2.34	0.41

*Continued on next page...*

*Continued from previous page...*

Atom-1	Atom-2	Interatomic distance (Å)	Clash overlap (Å)
1:B:248:ASP:OD1	1:B:280:SER:OG	2.39	0.41
1:I:113:LEU:HD23	1:I:113:LEU:N	2.34	0.41
1:P:72:ASN:HD22	1:P:74:PHE:H	1.67	0.41
1:P:307:LYS:HE3	1:P:314:VAL:HG21	2.02	0.41
1:F:118:ASP:CB	1:F:309:MET:SD	3.09	0.41
1:F:179:ASN:HB3	1:F:215:TYR:CE2	2.55	0.41
1:A:113:LEU:O	1:A:116:GLN:N	2.51	0.40
1:D:68:PRO:CB	1:D:100:GLN:HG3	2.51	0.40
1:D:98:SER:O	1:D:99:ASP:HB2	2.21	0.40
1:D:151:THR:CB	1:D:153:GLN:HE21	2.34	0.40
1:D:231:GLU:HG2	1:D:261:ARG:NH1	2.36	0.40
1:B:239:LYS:HA	1:B:240:PRO:HD3	1.92	0.40
1:B:300:VAL:HG21	1:B:321:LEU:HD21	2.03	0.40
1:F:216:ILE:HD12	1:F:216:ILE:N	2.36	0.40
1:F:271:ILE:HD13	1:F:271:ILE:O	2.21	0.40
1:F:293:PRO:HB2	1:F:296:ASP:HB2	2.03	0.40
1:B:191:ILE:HD11	3:B:586:HOH:O	2.21	0.40
1:B:198:LYS:HZ2	1:B:202:ARG:HD3	1.86	0.40
1:I:61:THR:H	1:I:90:LYS:HZ3	1.67	0.40
1:I:230:VAL:HG11	1:I:258:ALA:HB2	2.04	0.40
1:P:200:TYR:HE1	1:P:216:ILE:HD11	1.86	0.40
1:B:148:ILE:HD11	1:B:190:PRO:HB2	2.04	0.40
1:I:98:SER:HA	1:I:104:LYS:HE2	2.02	0.40
1:I:109:LEU:CD2	1:I:135:LEU:HD12	2.51	0.40
1:I:121:ILE:HD12	1:I:121:ILE:N	2.36	0.40
1:I:212:ARG:O	1:I:215:TYR:HB2	2.21	0.40
1:P:238:GLU:OE1	1:P:238:GLU:HA	2.21	0.40
1:A:169:VAL:HG21	1:A:200:TYR:HD2	1.86	0.40
1:B:65:VAL:O	1:B:95:LEU:HA	2.21	0.40
1:I:111:ASN:HD21	1:I:115:LYS:NZ	2.19	0.40
1:P:80:ARG:O	1:P:83:GLU:HB2	2.22	0.40
1:P:128:THR:O	1:P:131:HIS:HB2	2.22	0.40
1:F:132:VAL:HA	1:F:154:ILE:HD11	2.02	0.40
1:F:255:ILE:O	1:F:259:GLN:HG3	2.21	0.40
1:D:152:ASN:HB3	1:D:318:ILE:HG21	2.04	0.40
1:B:189:GLU:HA	1:B:190:PRO:HD3	1.83	0.40
1:B:256:HIS:HD2	1:B:259:GLN:OE1	2.04	0.40
1:I:102:GLN:O	1:I:106:LEU:HB2	2.22	0.40
1:I:166:PHE:CE2	1:I:202:ARG:NH1	2.88	0.40
1:P:72:ASN:HD22	1:P:73:ILE:N	2.18	0.40

There are no symmetry-related clashes.

## 5.3 Torsion angles

### 5.3.1 Protein backbone

In the following table, the Percentiles column shows the percent Ramachandran outliers of the chain as a percentile score with respect to all X-ray entries followed by that with respect to entries of similar resolution.

The Analysed column shows the number of residues for which the backbone conformation was analysed, and the total number of residues.

Mol	Chain	Analysed	Favoured	Allowed	Outliers	Percentiles
1	A	273/280 (98%)	248 (91%)	18 (7%)	7 (3%)	5 8
1	B	271/280 (97%)	230 (85%)	35 (13%)	6 (2%)	6 11
1	D	271/280 (97%)	250 (92%)	17 (6%)	4 (2%)	10 18
1	F	271/280 (97%)	247 (91%)	22 (8%)	2 (1%)	22 39
1	I	273/280 (98%)	248 (91%)	20 (7%)	5 (2%)	8 15
1	P	271/280 (97%)	242 (89%)	23 (8%)	6 (2%)	6 11
All	All	1630/1680 (97%)	1465 (90%)	135 (8%)	30 (2%)	8 15

All (30) Ramachandran outliers are listed below:

Mol	Chain	Res	Type
1	A	72	ASN
1	A	150	SER
1	B	150	SER
1	B	316	SER
1	P	68	PRO
1	P	313	THR
1	F	275	ASP
1	A	71	SER
1	A	237	ASP
1	A	275	ASP
1	D	275	ASP
1	B	275	ASP
1	I	275	ASP
1	I	316	SER
1	P	275	ASP
1	D	186	THR
1	B	267	ASN
1	I	116	GLN
1	I	139	PRO
1	P	150	SER

*Continued on next page...*



*Continued from previous page...*

Mol	Chain	Res	Type
1	A	293	PRO
1	P	141	PRO
1	D	293	PRO
1	B	203	ALA
1	I	115	LYS
1	A	139	PRO
1	P	132	VAL
1	F	293	PRO
1	D	211	VAL
1	B	68	PRO

### 5.3.2 Protein sidechains [i](#)

In the following table, the Percentiles column shows the percent sidechain outliers of the chain as a percentile score with respect to all X-ray entries followed by that with respect to entries of similar resolution.

The Analysed column shows the number of residues for which the sidechain conformation was analysed, and the total number of residues.

Mol	Chain	Analysed	Rotameric	Outliers	Percentiles
1	A	241/244 (99%)	219 (91%)	22 (9%)	9 16
1	B	239/244 (98%)	212 (89%)	27 (11%)	6 9
1	D	239/244 (98%)	220 (92%)	19 (8%)	12 22
1	F	239/244 (98%)	211 (88%)	28 (12%)	5 8
1	I	241/244 (99%)	211 (88%)	30 (12%)	4 7
1	P	239/244 (98%)	207 (87%)	32 (13%)	4 5
All	All	1438/1464 (98%)	1280 (89%)	158 (11%)	6 10

All (158) residues with a non-rotameric sidechain are listed below:

Mol	Chain	Res	Type
1	A	59	LYS
1	A	63	VAL
1	A	66	ILE
1	A	73	ILE
1	A	78	LEU
1	A	80	ARG
1	A	84	ASP
1	A	95	LEU

*Continued on next page...*

*Continued from previous page...*

<b>Mol</b>	<b>Chain</b>	<b>Res</b>	<b>Type</b>
1	A	96	SER
1	A	100	GLN
1	A	101	ASN
1	A	115	LYS
1	A	126	ASN
1	A	133	GLU
1	A	143	VAL
1	A	148	ILE
1	A	157	VAL
1	A	216	ILE
1	A	230	VAL
1	A	288	THR
1	A	303	ARG
1	A	319	VAL
1	D	60	THR
1	D	62	THR
1	D	63	VAL
1	D	87	THR
1	D	95	LEU
1	D	96	SER
1	D	106	LEU
1	D	129	GLU
1	D	148	ILE
1	D	149	GLU
1	D	157	VAL
1	D	198	LYS
1	D	241	THR
1	D	269	LEU
1	D	280	SER
1	D	283	VAL
1	D	292	GLN
1	D	302	MET
1	D	318	ILE
1	B	67	ILE
1	B	73	ILE
1	B	95	LEU
1	B	112	MET
1	B	120	ILE
1	B	126	ASN
1	B	135	LEU
1	B	157	VAL
1	B	159	ILE

*Continued on next page...*

*Continued from previous page...*

<b>Mol</b>	<b>Chain</b>	<b>Res</b>	<b>Type</b>
1	B	162	GLU
1	B	174	ASP
1	B	178	LYS
1	B	179	ASN
1	B	191	ILE
1	B	198	LYS
1	B	200	TYR
1	B	205	THR
1	B	222	THR
1	B	224	ASP
1	B	236	GLU
1	B	266	PRO
1	B	268	ASP
1	B	277	THR
1	B	283	VAL
1	B	284	ARG
1	B	303	ARG
1	B	310	ASN
1	I	62	THR
1	I	63	VAL
1	I	67	ILE
1	I	71	SER
1	I	72	ASN
1	I	78	LEU
1	I	90	LYS
1	I	93	ILE
1	I	97	ASN
1	I	104	LYS
1	I	106	LEU
1	I	111	ASN
1	I	113	LEU
1	I	129	GLU
1	I	132	VAL
1	I	135	LEU
1	I	143	VAL
1	I	147	SER
1	I	149	GLU
1	I	157	VAL
1	I	169	VAL
1	I	212	ARG
1	I	237	ASP
1	I	241	THR

*Continued on next page...*

*Continued from previous page...*

<b>Mol</b>	<b>Chain</b>	<b>Res</b>	<b>Type</b>
1	I	247	THR
1	I	269	LEU
1	I	271	ILE
1	I	283	VAL
1	I	318	ILE
1	I	324	ARG
1	P	60	THR
1	P	62	THR
1	P	65	VAL
1	P	70	ILE
1	P	72	ASN
1	P	73	ILE
1	P	80	ARG
1	P	85	ILE
1	P	92	ASN
1	P	93	ILE
1	P	94	ILE
1	P	111	ASN
1	P	116	GLN
1	P	129	GLU
1	P	143	VAL
1	P	149	GLU
1	P	158	THR
1	P	162	GLU
1	P	163	GLN
1	P	178	LYS
1	P	212	ARG
1	P	230	VAL
1	P	236	GLU
1	P	247	THR
1	P	261	ARG
1	P	266	PRO
1	P	277	THR
1	P	283	VAL
1	P	284	ARG
1	P	288	THR
1	P	303	ARG
1	P	324	ARG
1	F	63	VAL
1	F	67	ILE
1	F	72	ASN
1	F	73	ILE

*Continued on next page...*

*Continued from previous page...*

Mol	Chain	Res	Type
1	F	78	LEU
1	F	83	GLU
1	F	84	ASP
1	F	101	ASN
1	F	106	LEU
1	F	118	ASP
1	F	124	SER
1	F	149	GLU
1	F	169	VAL
1	F	180	ILE
1	F	193	HIS
1	F	204	LEU
1	F	230	VAL
1	F	247	THR
1	F	261	ARG
1	F	264	ASN
1	F	266	PRO
1	F	269	LEU
1	F	271	ILE
1	F	283	VAL
1	F	294	MET
1	F	309	MET
1	F	318	ILE
1	F	331	THR

Sometimes sidechains can be flipped to improve hydrogen bonding and reduce clashes. All (59) such sidechains are listed below:

Mol	Chain	Res	Type
1	A	107	HIS
1	A	126	ASN
1	A	152	ASN
1	A	153	GLN
1	A	179	ASN
1	A	193	HIS
1	A	286	GLN
1	A	310	ASN
1	D	72	ASN
1	D	92	ASN
1	D	110	ASN
1	D	126	ASN
1	D	153	GLN
1	D	163	GLN

*Continued on next page...*

*Continued from previous page...*

<b>Mol</b>	<b>Chain</b>	<b>Res</b>	<b>Type</b>
1	D	170	GLN
1	D	179	ASN
1	D	192	ASN
1	D	256	HIS
1	D	286	GLN
1	D	310	ASN
1	B	97	ASN
1	B	101	ASN
1	B	110	ASN
1	B	111	ASN
1	B	126	ASN
1	B	152	ASN
1	B	163	GLN
1	B	177	HIS
1	B	179	ASN
1	B	192	ASN
1	B	292	GLN
1	I	72	ASN
1	I	92	ASN
1	I	101	ASN
1	I	107	HIS
1	I	110	ASN
1	I	131	HIS
1	I	192	ASN
1	I	310	ASN
1	P	72	ASN
1	P	100	GLN
1	P	102	GLN
1	P	111	ASN
1	P	116	GLN
1	P	163	GLN
1	P	192	ASN
1	P	267	ASN
1	P	329	GLN
1	F	72	ASN
1	F	97	ASN
1	F	100	GLN
1	F	101	ASN
1	F	102	GLN
1	F	107	HIS
1	F	111	ASN
1	F	163	GLN

*Continued on next page...*

*Continued from previous page...*

Mol	Chain	Res	Type
1	F	170	GLN
1	F	193	HIS
1	F	256	HIS

### 5.3.3 RNA [i](#)

There are no RNA molecules in this entry.

### 5.4 Non-standard residues in protein, DNA, RNA chains [i](#)

There are no non-standard protein/DNA/RNA residues in this entry.

### 5.5 Carbohydrates [i](#)

There are no monosaccharides in this entry.

### 5.6 Ligand geometry [i](#)

2 ligands are modelled in this entry.

In the following table, the Counts columns list the number of bonds (or angles) for which Mogul statistics could be retrieved, the number of bonds (or angles) that are observed in the model and the number of bonds (or angles) that are defined in the Chemical Component Dictionary. The Link column lists molecule types, if any, to which the group is linked. The Z score for a bond length (or angle) is the number of standard deviations the observed value is removed from the expected value. A bond length (or angle) with  $|Z| > 2$  is considered an outlier worth inspection. RMSZ is the root-mean-square of all Z scores of the bond lengths (or angles).

Mol	Type	Chain	Res	Link	Bond lengths			Bond angles		
					Counts	RMSZ	# $ Z  > 2$	Counts	RMSZ	# $ Z  > 2$
2	171	B	5256	-	13,13,13	2.12	3 (23%)	16,17,17	2.38	3 (18%)
2	171	A	3256	-	13,13,13	1.88	4 (30%)	16,17,17	2.22	4 (25%)

In the following table, the Chirals column lists the number of chiral outliers, the number of chiral centers analysed, the number of these observed in the model and the number defined in the Chemical Component Dictionary. Similar counts are reported in the Torsion and Rings columns. '-' means no outliers of that kind were identified.

Mol	Type	Chain	Res	Link	Chirals	Torsions	Rings
2	171	B	5256	-	-	2/7/7/7	0/1/1/1

*Continued on next page...*

Continued from previous page...

Mol	Type	Chain	Res	Link	Chirals	Torsions	Rings
2	171	A	3256	-	-	2/7/7/7	0/1/1/1

All (7) bond length outliers are listed below:

Mol	Chain	Res	Type	Atoms	Z	Observed(Å)	Ideal(Å)
2	B	5256	171	C2-S	-5.50	1.69	1.77
2	A	3256	171	O2-S	3.80	1.56	1.45
2	A	3256	171	O1-S	2.78	1.53	1.45
2	A	3256	171	C2-S	-2.37	1.74	1.77
2	B	5256	171	C3'-C2'	2.31	1.43	1.38
2	A	3256	171	C6'-C1'	2.29	1.43	1.39
2	B	5256	171	C6'-C1'	2.27	1.43	1.39

All (7) bond angle outliers are listed below:

Mol	Chain	Res	Type	Atoms	Z	Observed(°)	Ideal(°)
2	B	5256	171	C1-N-C1'	-6.92	107.64	122.94
2	A	3256	171	C1-N-C1'	-6.05	109.56	122.94
2	B	5256	171	C2-C1-N	4.48	124.39	111.30
2	A	3256	171	C2-C1-N	4.00	122.99	111.30
2	B	5256	171	O1-S-C2	3.14	110.69	106.92
2	A	3256	171	O1-S-C2	3.02	110.55	106.92
2	A	3256	171	O2-S-C2	2.78	110.27	106.92

There are no chirality outliers.

All (4) torsion outliers are listed below:

Mol	Chain	Res	Type	Atoms
2	B	5256	171	C2'-C1'-N-C1
2	A	3256	171	C2'-C1'-N-C1
2	B	5256	171	C6'-C1'-N-C1
2	A	3256	171	C6'-C1'-N-C1

There are no ring outliers.

1 monomer is involved in 1 short contact:

Mol	Chain	Res	Type	Clashes	Symm-Clashes
2	B	5256	171	1	0



## 5.7 Other polymers [i](#)

There are no such residues in this entry.

## 5.8 Polymer linkage issues [i](#)

There are no chain breaks in this entry.

## 6 Fit of model and data [i](#)

### 6.1 Protein, DNA and RNA chains [i](#)

In the following table, the column labelled ‘#RSRZ > 2’ contains the number (and percentage) of RSRZ outliers, followed by percent RSRZ outliers for the chain as percentile scores relative to all X-ray entries and entries of similar resolution. The OWAB column contains the minimum, median, 95<sup>th</sup> percentile and maximum values of the occupancy-weighted average B-factor per residue. The column labelled ‘Q < 0.9’ lists the number of (and percentage) of residues with an average occupancy less than 0.9.

Mol	Chain	Analysed	<RSRZ>	#RSRZ>2	OWAB(Å <sup>2</sup> )	Q<0.9
1	A	275/280 (98%)	-0.18	4 (1%) 73 81	17, 34, 57, 72	0
1	B	273/280 (97%)	0.12	6 (2%) 62 70	30, 48, 65, 73	0
1	D	273/280 (97%)	-0.16	0 100 100	22, 39, 59, 70	0
1	F	273/280 (97%)	0.07	4 (1%) 73 81	24, 45, 62, 75	0
1	I	275/280 (98%)	0.06	6 (2%) 62 70	22, 42, 65, 76	0
1	P	273/280 (97%)	-0.00	4 (1%) 73 81	19, 43, 73, 79	0
All	All	1642/1680 (97%)	-0.02	24 (1%) 73 81	17, 42, 65, 79	0

All (24) RSRZ outliers are listed below:

Mol	Chain	Res	Type	RSRZ
1	I	114	GLY	5.1
1	I	116	GLN	5.1
1	A	114	GLY	4.7
1	P	109	LEU	3.1
1	F	60	THR	2.9
1	B	315	ASP	2.9
1	F	314	VAL	2.9
1	F	315	ASP	2.9
1	I	113	LEU	2.8
1	P	103	ASP	2.7
1	B	314	VAL	2.7
1	F	316	SER	2.6
1	P	108	LEU	2.5
1	P	100	GLN	2.5
1	B	151	THR	2.4
1	I	107	HIS	2.4
1	A	113	LEU	2.3
1	B	198	LYS	2.3
1	A	115	LYS	2.2

*Continued on next page...*

*Continued from previous page...*

Mol	Chain	Res	Type	RSRZ
1	A	315	ASP	2.2
1	B	187	LEU	2.1
1	I	93	ILE	2.1
1	B	313	THR	2.0
1	I	112	MET	2.0

## 6.2 Non-standard residues in protein, DNA, RNA chains [i](#)

There are no non-standard protein/DNA/RNA residues in this entry.

## 6.3 Carbohydrates [i](#)

There are no monosaccharides in this entry.

## 6.4 Ligands [i](#)

In the following table, the Atoms column lists the number of modelled atoms in the group and the number defined in the chemical component dictionary. The B-factors column lists the minimum, median, 95<sup>th</sup> percentile and maximum values of B factors of atoms in the group. The column labelled 'Q< 0.9' lists the number of atoms with occupancy less than 0.9.

Mol	Type	Chain	Res	Atoms	RSCC	RSR	B-factors( $\text{\AA}^2$ )	Q<0.9
2	171	A	3256	13/13	0.85	0.25	20,23,29,40	0
2	171	B	5256	13/13	0.92	0.26	21,23,28,30	0

## 6.5 Other polymers [i](#)

There are no such residues in this entry.