



Full wwPDB X-ray Structure Validation Report ⓘ

Jun 16, 2024 – 08:27 AM EDT

PDB ID : 1SZN
Title : THE STRUCTURE OF ALPHA-GALACTOSIDASE
Authors : Golubev, A.M.; Nagem, R.A.P.; Brando Neto, J.R.; Neustroev, K.N.; Eneyskaya, E.V.; Kulminskaya, A.A.; Shabalin, K.A.; Savel'ev, A.N.; Polikarpov, I.
Deposited on : 2004-04-06
Resolution : 1.54 Å(reported)

This is a Full wwPDB X-ray Structure Validation Report for a publicly released PDB entry.

We welcome your comments at validation@mail.wwpdb.org

A user guide is available at

<https://www.wwpdb.org/validation/2017/XrayValidationReportHelp>

with specific help available everywhere you see the ⓘ symbol.

The types of validation reports are described at

<http://www.wwpdb.org/validation/2017/FAQs#types>.

The following versions of software and data (see [references ⓘ](#)) were used in the production of this report:

MolProbity : 4.02b-467
Mogul : 2022.3.0, CSD as543be (2022)
Xtriage (Phenix) : 1.20.1
EDS : 2.37.1
Percentile statistics : 20191225.v01 (using entries in the PDB archive December 25th 2019)
Refmac : 5.8.0158
CCP4 : 7.0.044 (Gargrove)
Ideal geometry (proteins) : Engh & Huber (2001)
Ideal geometry (DNA, RNA) : Parkinson et al. (1996)
Validation Pipeline (wwPDB-VP) : 2.37.1

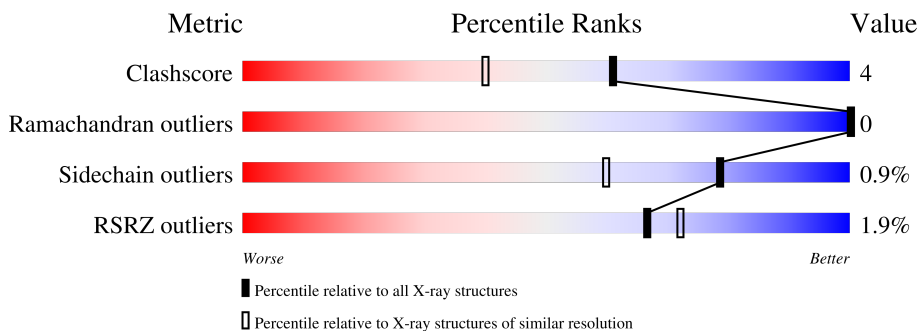
1 Overall quality at a glance

The following experimental techniques were used to determine the structure:

X-RAY DIFFRACTION

The reported resolution of this entry is 1.54 Å.

Percentile scores (ranging between 0-100) for global validation metrics of the entry are shown in the following graphic. The table shows the number of entries on which the scores are based.



Metric	Whole archive (#Entries)	Similar resolution (#Entries, resolution range(Å))
Clashscore	141614	2634 (1.56-1.52)
Ramachandran outliers	138981	2580 (1.56-1.52)
Sidechain outliers	138945	2577 (1.56-1.52)
RSRZ outliers	127900	2524 (1.56-1.52)

The table below summarises the geometric issues observed across the polymeric chains and their fit to the electron density. The red, orange, yellow and green segments of the lower bar indicate the fraction of residues that contain outliers for ≥ 3 , 2, 1 and 0 types of geometric quality criteria respectively. A grey segment represents the fraction of residues that are not modelled. The numeric value for each fraction is indicated below the corresponding segment, with a dot representing fractions $\leq 5\%$. The upper red bar (where present) indicates the fraction of residues that have poor fit to the electron density. The numeric value is given above the bar.

Mol	Chain	Length	Quality of chain
1	A	417	 2% 90% 9%
2	B	2	 100%
2	E	2	 100%
3	C	7	 86% 14%
4	D	6	 17% 83%

The following table lists non-polymeric compounds, carbohydrate monomers and non-standard residues in protein, DNA, RNA chains that are outliers for geometric or electron-density-fit crite-

ria:

Mol	Type	Chain	Res	Chirality	Geometry	Clashes	Electron density
4	BMA	D	5	-	-	-	X
5	GOL	A	901	-	-	X	-

2 Entry composition [i](#)

There are 6 unique types of molecules in this entry. The entry contains 4059 atoms, of which 0 are hydrogens and 0 are deuteriums.

In the tables below, the ZeroOcc column contains the number of atoms modelled with zero occupancy, the AltConf column contains the number of residues with at least one atom in alternate conformation and the Trace column contains the number of residues modelled with at most 2 atoms.

- Molecule 1 is a protein called alpha-galactosidase.

Mol	Chain	Residues	Atoms					ZeroOcc	AltConf	Trace
			Total	C	N	O	S			
1	A	417	3213	2039	539	618	17	0	0	0

There are 40 discrepancies between the modelled and reference sequences:

Chain	Residue	Modelled	Actual	Comment	Reference
A	37	LEU	VAL	SEE REMARK 999	GB 1580816
A	70	PRO	VAL	SEE REMARK 999	GB 1580816
A	72	ALA	THR	SEE REMARK 999	GB 1580816
A	88	ALA	ASP	SEE REMARK 999	GB 1580816
A	148	ASN	ALA	SEE REMARK 999	GB 1580816
A	151	PHE	ALA	SEE REMARK 999	GB 1580816
A	153	LYS	GLN	SEE REMARK 999	GB 1580816
A	161	THR	SER	SEE REMARK 999	GB 1580816
A	165	ASP	GLU	SEE REMARK 999	GB 1580816
A	167	THR	ASN	SEE REMARK 999	GB 1580816
A	185	GLY	ASN	SEE REMARK 999	GB 1580816
A	196	HIS	ARG	SEE REMARK 999	GB 1580816
A	202	MET	LEU	SEE REMARK 999	GB 1580816
A	207	GLN	VAL	SEE REMARK 999	GB 1580816
A	216	SER	GLU	SEE REMARK 999	GB 1580816
A	225	ASP	GLY	SEE REMARK 999	GB 1580816
A	230	ASN	GLU	SEE REMARK 999	GB 1580816
A	236	ARG	HIS	SEE REMARK 999	GB 1580816
A	238	LEU	ILE	SEE REMARK 999	GB 1580816
A	240	LEU	MET	SEE REMARK 999	GB 1580816
A	245	LEU	MET	SEE REMARK 999	GB 1580816
A	249	ASP	GLY	SEE REMARK 999	GB 1580816
A	258	MET	ILE	SEE REMARK 999	GB 1580816
A	297	ASN	GLU	SEE REMARK 999	GB 1580816
A	300	ASN	GLU	SEE REMARK 999	GB 1580816
A	327	ILE	VAL	SEE REMARK 999	GB 1580816
A	335	VAL	TYR	SEE REMARK 999	GB 1580816

Continued on next page...

Continued from previous page...

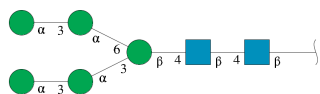
Chain	Residue	Modelled	Actual	Comment	Reference
A	337	TYR	ASN	SEE REMARK 999	GB 1580816
A	341	PHE	TYR	SEE REMARK 999	GB 1580816
A	355	VAL	MET	SEE REMARK 999	GB 1580816
A	360	ILE	HIS	SEE REMARK 999	GB 1580816
A	362	ALA	VAL	SEE REMARK 999	GB 1580816
A	363	THR	ARG	SEE REMARK 999	GB 1580816
A	369	ASN	SER	SEE REMARK 999	GB 1580816
A	378	HIS	ARG	SEE REMARK 999	GB 1580816
A	386	SER	THR	SEE REMARK 999	GB 1580816
A	389	ASP	SER	SEE REMARK 999	GB 1580816
A	398	ALA	THR	SEE REMARK 999	GB 1580816
A	415	GLN	ARG	SEE REMARK 999	GB 1580816
A	416	ARG	ASN	SEE REMARK 999	GB 1580816

- Molecule 2 is an oligosaccharide called 2-acetamido-2-deoxy-beta-D-glucopyranose-(1-4)-2-acetamido-2-deoxy-beta-D-glucopyranose.



Mol	Chain	Residues	Atoms				ZeroOcc	AltConf	Trace
			Total	C	N	O			
2	B	2	Total	C	N	O	0	0	0
			28	16	2	10			
2	E	2	Total	C	N	O	0	0	0
			28	16	2	10			

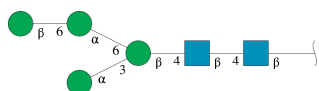
- Molecule 3 is an oligosaccharide called alpha-D-mannopyranose-(1-3)-alpha-D-mannopyranose-(1-3)-[alpha-D-mannopyranose-(1-3)-alpha-D-mannopyranose-(1-6)]beta-D-mannopyranose-(1-4)-2-acetamido-2-deoxy-beta-D-glucopyranose-(1-4)-2-acetamido-2-deoxy-beta-D-glucopyranose.



Mol	Chain	Residues	Atoms				ZeroOcc	AltConf	Trace
			Total	C	N	O			
3	C	7	Total	C	N	O	0	0	0
			83	46	2	35			

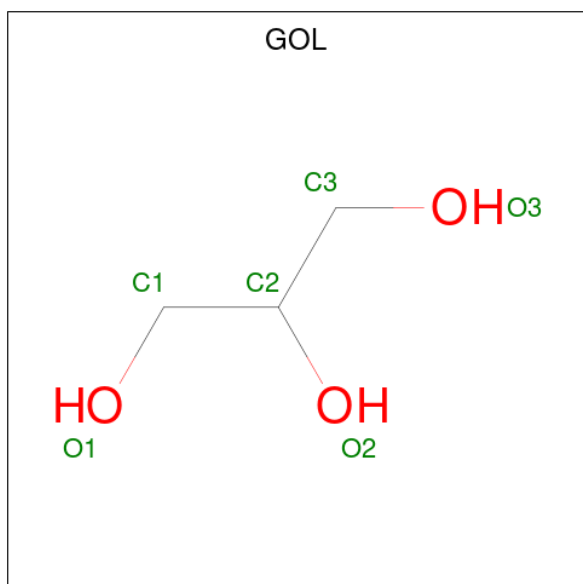
- Molecule 4 is an oligosaccharide called beta-D-mannopyranose-(1-6)-alpha-D-mannopyranose-(1-6)-[alpha-D-mannopyranose-(1-3)]beta-D-mannopyranose-(1-4)-2-acetamido-2-deoxy-be

ta-D-glucopyranose-(1-4)-2-acetamido-2-deoxy-beta-D-glucopyranose.



Mol	Chain	Residues	Atoms			ZeroOcc	AltConf	Trace	
			Total	C	N				O
4	D	6	72	40	2	30	0	0	0

- Molecule 5 is GLYCEROL (three-letter code: GOL) (formula: C₃H₈O₃).



Mol	Chain	Residues	Atoms			ZeroOcc	AltConf
			Total	C	O		
5	A	1	6	3	3	0	0
5	A	1	6	3	3	0	0

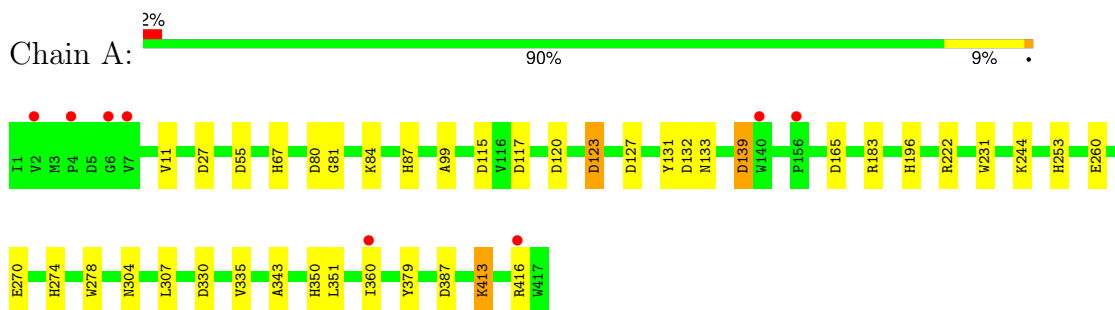
- Molecule 6 is water.

Mol	Chain	Residues	Atoms		ZeroOcc	AltConf
6	A	623	Total	O	0	0
			623	623		

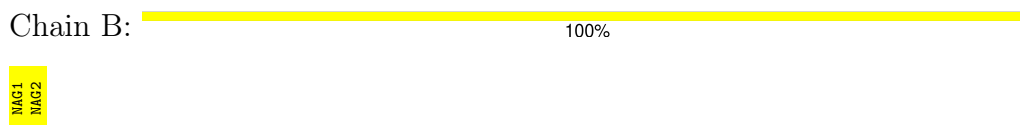
3 Residue-property plots [i](#)

These plots are drawn for all protein, RNA, DNA and oligosaccharide chains in the entry. The first graphic for a chain summarises the proportions of the various outlier classes displayed in the second graphic. The second graphic shows the sequence view annotated by issues in geometry and electron density. Residues are color-coded according to the number of geometric quality criteria for which they contain at least one outlier: green = 0, yellow = 1, orange = 2 and red = 3 or more. A red dot above a residue indicates a poor fit to the electron density ($RSRZ > 2$). Stretches of 2 or more consecutive residues without any outlier are shown as a green connector. Residues present in the sample, but not in the model, are shown in grey.

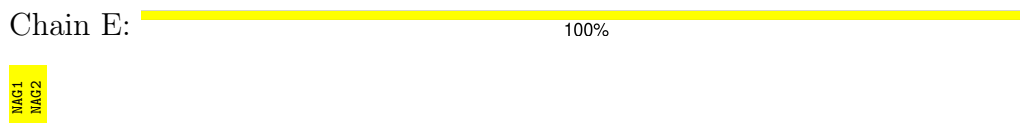
- Molecule 1: alpha-galactosidase



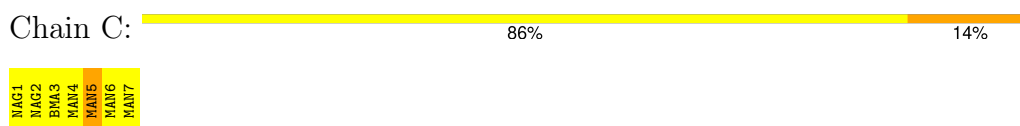
- Molecule 2: 2-acetamido-2-deoxy-beta-D-glucopyranose-(1-4)-2-acetamido-2-deoxy-beta-D-glucopyranose



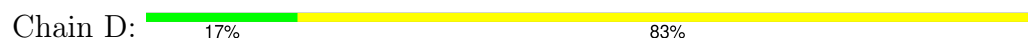
- Molecule 2: 2-acetamido-2-deoxy-beta-D-glucopyranose-(1-4)-2-acetamido-2-deoxy-beta-D-glucopyranose



- Molecule 3: alpha-D-mannopyranose-(1-3)-alpha-D-mannopyranose-(1-3)-[alpha-D-mannopyranose-(1-3)-alpha-D-mannopyranose-(1-6)]beta-D-mannopyranose-(1-4)-2-acetamido-2-deoxy-beta-D-glucopyranose-(1-4)-2-acetamido-2-deoxy-beta-D-glucopyranose



- Molecule 4: beta-D-mannopyranose-(1-6)-alpha-D-mannopyranose-(1-6)-[alpha-D-mannopyranose-(1-3)]beta-D-mannopyranose-(1-4)-2-acetamido-2-deoxy-beta-D-glucopyranose-(1-4)-2-acetamido-2-deoxy-beta-D-glucopyranose



4 Data and refinement statistics

Property	Value	Source
Space group	P 21 21 21	Depositor
Cell constants a, b, c, α , β , γ	46.49Å 79.05Å 119.44Å 90.00° 90.00° 90.00°	Depositor
Resolution (Å)	12.00 – 1.54 13.04 – 1.54	Depositor EDS
% Data completeness (in resolution range)	96.1 (12.00-1.54) 96.1 (13.04-1.54)	Depositor EDS
R_{merge}	0.04	Depositor
R_{sym}	0.07	Depositor
$\langle I/\sigma(I) \rangle$ ¹	1.86 (at 1.54Å)	Xtrriage
Refinement program	REFMAC 5.0	Depositor
R, R_{free}	0.151 , 0.183 0.162 , (Not available)	Depositor DCC
R_{free} test set	No test flags present.	wwPDB-VP
Wilson B-factor (Å ²)	25.6	Xtrriage
Anisotropy	0.359	Xtrriage
Bulk solvent k_{sol} (e/Å ³), B_{sol} (Å ²)	0.43 , 64.8	EDS
L-test for twinning ²	$\langle L \rangle = 0.49$, $\langle L^2 \rangle = 0.33$	Xtrriage
Estimated twinning fraction	No twinning to report.	Xtrriage
F_o, F_c correlation	0.98	EDS
Total number of atoms	4059	wwPDB-VP
Average B, all atoms (Å ²)	29.0	wwPDB-VP

Xtrriage's analysis on translational NCS is as follows: *The largest off-origin peak in the Patterson function is 5.77% of the height of the origin peak. No significant pseudotranslation is detected.*

¹Intensities estimated from amplitudes.

²Theoretical values of $\langle |L| \rangle$, $\langle L^2 \rangle$ for acentric reflections are 0.5, 0.333 respectively for untwinned datasets, and 0.375, 0.2 for perfectly twinned datasets.

5 Model quality [i](#)

5.1 Standard geometry [i](#)

Bond lengths and bond angles in the following residue types are not validated in this section: NAG, GOL, MAN, BMA

The Z score for a bond length (or angle) is the number of standard deviations the observed value is removed from the expected value. A bond length (or angle) with $|Z| > 5$ is considered an outlier worth inspection. RMSZ is the root-mean-square of all Z scores of the bond lengths (or angles).

Mol	Chain	Bond lengths		Bond angles	
		RMSZ	# Z >5	RMSZ	# Z >5
1	A	0.87	0/3304	0.95	12/4512 (0.3%)

There are no bond length outliers.

All (12) bond angle outliers are listed below:

Mol	Chain	Res	Type	Atoms	Z	Observed(°)	Ideal(°)
1	A	139	ASP	CB-CG-OD2	9.57	126.91	118.30
1	A	123	ASP	CB-CG-OD2	7.48	125.03	118.30
1	A	132	ASP	CB-CG-OD2	7.08	124.67	118.30
1	A	117	ASP	CB-CG-OD2	6.56	124.20	118.30
1	A	387	ASP	CB-CG-OD2	6.25	123.92	118.30
1	A	222	ARG	NE-CZ-NH2	6.18	123.39	120.30
1	A	80	ASP	CB-CG-OD1	6.14	123.82	118.30
1	A	55	ASP	CB-CG-OD1	5.88	123.59	118.30
1	A	330	ASP	CB-CG-OD2	5.40	123.16	118.30
1	A	27	ASP	CB-CG-OD1	5.37	123.13	118.30
1	A	165	ASP	CB-CG-OD2	5.13	122.92	118.30
1	A	115	ASP	CB-CG-OD1	5.11	122.90	118.30

There are no chirality outliers.

There are no planarity outliers.

5.2 Too-close contacts [i](#)

In the following table, the Non-H and H(model) columns list the number of non-hydrogen atoms and hydrogen atoms in the chain respectively. The H(added) column lists the number of hydrogen atoms added and optimized by MolProbity. The Clashes column lists the number of clashes within the asymmetric unit, whereas Symm-Clashes lists symmetry-related clashes.

Mol	Chain	Non-H	H(model)	H(added)	Clashes	Symm-Clashes
1	A	3213	0	3045	29	0
2	B	28	0	25	0	0
2	E	28	0	25	0	0
3	C	83	0	70	1	0
4	D	72	0	60	0	0
5	A	12	0	16	5	0
6	A	623	0	0	12	0
All	All	4059	0	3241	30	0

The all-atom clashscore is defined as the number of clashes found per 1000 atoms (including hydrogen atoms). The all-atom clashscore for this structure is 4.

All (30) close contacts within the same asymmetric unit are listed below, sorted by their clash magnitude.

Atom-1	Atom-2	Interatomic distance (Å)	Clash overlap (Å)
1:A:260:GLU:H	1:A:274:HIS:HE1	1.15	0.91
1:A:350:HIS:ND1	6:A:2219:HOH:O	2.15	0.78
1:A:67:HIS:HD2	1:A:120:ASP:OD2	1.70	0.74
1:A:133:ASN:HD21	5:A:901:GOL:C3	2.00	0.74
1:A:304:ASN:HD22	1:A:307:LEU:H	1.37	0.73
1:A:133:ASN:HD21	5:A:901:GOL:H31	1.54	0.73
1:A:253:HIS:HE1	6:A:1630:HOH:O	1.76	0.69
1:A:260:GLU:H	1:A:274:HIS:CE1	2.04	0.68
1:A:87:HIS:HE1	1:A:127:ASP:OD1	1.78	0.65
1:A:139:ASP:HB3	6:A:2195:HOH:O	1.98	0.64
1:A:133:ASN:ND2	5:A:901:GOL:H31	2.15	0.62
1:A:253:HIS:HD2	6:A:1699:HOH:O	1.82	0.62
1:A:87:HIS:HD2	6:A:1631:HOH:O	1.86	0.58
1:A:304:ASN:ND2	1:A:307:LEU:H	2.02	0.57
1:A:379:TYR:CE2	1:A:413:LYS:HG2	2.44	0.52
1:A:350:HIS:HD2	6:A:2033:HOH:O	1.94	0.51
6:A:2176:HOH:O	3:C:5:MAN:C6	2.60	0.48
1:A:183:ARG:NH2	5:A:901:GOL:H32	2.30	0.45
1:A:99:ALA:HB2	1:A:131:TYR:CE2	2.52	0.44
1:A:260:GLU:N	1:A:274:HIS:HE1	1.97	0.44
1:A:81:GLY:HA2	1:A:84:LYS:HE2	1.98	0.44
1:A:231:TRP:CE3	1:A:270:GLU:HG2	2.54	0.43
1:A:11:VAL:HG22	6:A:1782:HOH:O	2.18	0.43
1:A:244:LYS:HE3	6:A:1976:HOH:O	2.18	0.42
1:A:127:ASP:OD2	1:A:196:HIS:HE1	2.01	0.42
1:A:133:ASN:ND2	5:A:901:GOL:C3	2.76	0.41
1:A:343:ALA:HA	1:A:351:LEU:O	2.20	0.41

Continued on next page...

Continued from previous page...

Atom-1	Atom-2	Interatomic distance (Å)	Clash overlap (Å)
1:A:416:ARG:CZ	6:A:1977:HOH:O	2.68	0.41
1:A:335:VAL:HG12	6:A:1662:HOH:O	2.20	0.41
1:A:123:ASP:HB3	6:A:2222:HOH:O	2.21	0.40

There are no symmetry-related clashes.

5.3 Torsion angles [i](#)

5.3.1 Protein backbone [i](#)

In the following table, the Percentiles column shows the percent Ramachandran outliers of the chain as a percentile score with respect to all X-ray entries followed by that with respect to entries of similar resolution.

The Analysed column shows the number of residues for which the backbone conformation was analysed, and the total number of residues.

Mol	Chain	Analysed	Favoured	Allowed	Outliers	Percentiles
1	A	415/417 (100%)	406 (98%)	9 (2%)	0	100 100

There are no Ramachandran outliers to report.

5.3.2 Protein sidechains [i](#)

In the following table, the Percentiles column shows the percent sidechain outliers of the chain as a percentile score with respect to all X-ray entries followed by that with respect to entries of similar resolution.

The Analysed column shows the number of residues for which the sidechain conformation was analysed, and the total number of residues.

Mol	Chain	Analysed	Rotameric	Outliers	Percentiles
1	A	340/340 (100%)	337 (99%)	3 (1%)	78 60

All (3) residues with a non-rotameric sidechain are listed below:

Mol	Chain	Res	Type
1	A	278	TRP
1	A	360	ILE
1	A	413	LYS

Sometimes sidechains can be flipped to improve hydrogen bonding and reduce clashes. All (6) such sidechains are listed below:

Mol	Chain	Res	Type
1	A	67	HIS
1	A	87	HIS
1	A	196	HIS
1	A	253	HIS
1	A	274	HIS
1	A	304	ASN

5.3.3 RNA [i](#)

There are no RNA molecules in this entry.

5.4 Non-standard residues in protein, DNA, RNA chains [i](#)

There are no non-standard protein/DNA/RNA residues in this entry.

5.5 Carbohydrates [i](#)

17 monosaccharides are modelled in this entry.

In the following table, the Counts columns list the number of bonds (or angles) for which Mogul statistics could be retrieved, the number of bonds (or angles) that are observed in the model and the number of bonds (or angles) that are defined in the Chemical Component Dictionary. The Link column lists molecule types, if any, to which the group is linked. The Z score for a bond length (or angle) is the number of standard deviations the observed value is removed from the expected value. A bond length (or angle) with $|Z| > 2$ is considered an outlier worth inspection. RMSZ is the root-mean-square of all Z scores of the bond lengths (or angles).

Mol	Type	Chain	Res	Link	Bond lengths			Bond angles		
					Counts	RMSZ	# Z > 2	Counts	RMSZ	# Z > 2
2	NAG	B	1	2,1	14,14,15	0.69	0	17,19,21	1.55	3 (17%)
2	NAG	B	2	2	14,14,15	1.04	2 (14%)	17,19,21	1.86	3 (17%)
3	NAG	C	1	1,3	14,14,15	0.87	0	17,19,21	1.36	3 (17%)
3	NAG	C	2	3	14,14,15	0.72	0	17,19,21	1.41	2 (11%)
3	BMA	C	3	3	11,11,12	0.86	1 (9%)	15,15,17	1.45	2 (13%)
3	MAN	C	4	3	11,11,12	0.69	0	15,15,17	1.27	2 (13%)
3	MAN	C	5	3	11,11,12	0.60	0	15,15,17	1.11	1 (6%)
3	MAN	C	6	3	11,11,12	1.03	1 (9%)	15,15,17	1.00	1 (6%)
3	MAN	C	7	3	11,11,12	1.02	1 (9%)	15,15,17	1.24	1 (6%)

Mol	Type	Chain	Res	Link	Bond lengths			Bond angles		
					Counts	RMSZ	# Z > 2	Counts	RMSZ	# Z > 2
4	NAG	D	1	1,4	14,14,15	0.68	0	17,19,21	1.23	1 (5%)
4	NAG	D	2	4	14,14,15	1.33	1 (7%)	17,19,21	1.66	3 (17%)
4	BMA	D	3	4	11,11,12	0.98	1 (9%)	15,15,17	0.75	0
4	MAN	D	4	4	11,11,12	1.79	1 (9%)	15,15,17	5.11	4 (26%)
4	BMA	D	5	4	11,11,12	1.14	1 (9%)	15,15,17	1.75	3 (20%)
4	MAN	D	6	4	11,11,12	0.64	0	15,15,17	0.95	0
2	NAG	E	1	2,1	14,14,15	0.90	1 (7%)	17,19,21	1.26	2 (11%)
2	NAG	E	2	2	14,14,15	1.18	2 (14%)	17,19,21	1.97	3 (17%)

In the following table, the Chirals column lists the number of chiral outliers, the number of chiral centers analysed, the number of these observed in the model and the number defined in the Chemical Component Dictionary. Similar counts are reported in the Torsion and Rings columns. '-' means no outliers of that kind were identified.

Mol	Type	Chain	Res	Link	Chirals	Torsions	Rings
2	NAG	B	1	2,1	-	0/6/23/26	0/1/1/1
2	NAG	B	2	2	-	0/6/23/26	0/1/1/1
3	NAG	C	1	1,3	-	0/6/23/26	0/1/1/1
3	NAG	C	2	3	-	0/6/23/26	0/1/1/1
3	BMA	C	3	3	-	0/2/19/22	0/1/1/1
3	MAN	C	4	3	-	2/2/19/22	0/1/1/1
3	MAN	C	5	3	-	0/2/19/22	0/1/1/1
3	MAN	C	6	3	-	0/2/19/22	0/1/1/1
3	MAN	C	7	3	-	0/2/19/22	0/1/1/1
4	NAG	D	1	1,4	-	0/6/23/26	0/1/1/1
4	NAG	D	2	4	-	0/6/23/26	0/1/1/1
4	BMA	D	3	4	-	0/2/19/22	0/1/1/1
4	MAN	D	4	4	-	0/2/19/22	0/1/1/1
4	BMA	D	5	4	-	0/2/19/22	0/1/1/1
4	MAN	D	6	4	-	0/2/19/22	1/1/1/1
2	NAG	E	1	2,1	-	0/6/23/26	0/1/1/1
2	NAG	E	2	2	-	0/6/23/26	0/1/1/1

All (12) bond length outliers are listed below:

Mol	Chain	Res	Type	Atoms	Z	Observed(Å)	Ideal(Å)
4	D	4	MAN	O5-C1	5.29	1.52	1.43
4	D	2	NAG	O5-C1	-3.81	1.37	1.43
2	E	2	NAG	O5-C1	-3.22	1.38	1.43
2	E	1	NAG	C1-C2	2.97	1.56	1.52

Continued on next page...

Continued from previous page...

Mol	Chain	Res	Type	Atoms	Z	Observed(Å)	Ideal(Å)
4	D	5	BMA	O5-C5	-2.72	1.38	1.43
3	C	7	MAN	O5-C1	-2.72	1.39	1.43
3	C	3	BMA	O5-C1	-2.51	1.39	1.43
2	B	2	NAG	C1-C2	2.48	1.55	1.52
3	C	6	MAN	O2-C2	-2.38	1.38	1.43
2	E	2	NAG	O5-C5	-2.38	1.38	1.43
4	D	3	BMA	O5-C1	-2.13	1.40	1.43
2	B	2	NAG	O5-C5	2.04	1.47	1.43

All (34) bond angle outliers are listed below:

Mol	Chain	Res	Type	Atoms	Z	Observed(°)	Ideal(°)
4	D	4	MAN	C1-O5-C5	14.45	131.55	112.19
4	D	4	MAN	O2-C2-C1	12.63	138.14	109.22
2	E	2	NAG	C1-O5-C5	6.36	120.70	112.19
2	B	2	NAG	C1-O5-C5	-4.59	106.04	112.19
4	D	5	BMA	C3-C4-C5	4.46	118.32	110.23
4	D	2	NAG	C1-O5-C5	4.07	117.64	112.19
2	B	2	NAG	C1-C2-N2	3.97	116.69	110.43
3	C	7	MAN	C1-O5-C5	3.91	117.43	112.19
4	D	5	BMA	O5-C1-C2	-3.73	101.90	110.79
3	C	2	NAG	C1-C2-N2	3.45	115.87	110.43
2	B	1	NAG	O5-C1-C2	-3.43	105.99	111.29
2	B	2	NAG	O5-C1-C2	3.27	116.35	111.29
3	C	3	BMA	O2-C2-C3	-3.23	103.45	110.15
4	D	4	MAN	O6-C6-C5	3.08	121.81	111.33
4	D	2	NAG	O7-C7-N2	2.97	127.23	121.98
3	C	3	BMA	C1-O5-C5	-2.95	108.23	112.19
4	D	2	NAG	O7-C7-C8	-2.77	117.13	122.05
2	E	1	NAG	O4-C4-C5	-2.72	102.62	109.32
3	C	4	MAN	C1-C2-C3	-2.71	105.69	109.64
3	C	1	NAG	O5-C1-C2	-2.59	107.29	111.29
4	D	5	BMA	C2-C3-C4	2.49	115.25	110.86
4	D	1	NAG	O3-C3-C4	2.48	116.23	110.38
2	B	1	NAG	C4-C3-C2	2.48	114.65	111.02
2	E	1	NAG	C1-C2-N2	2.46	114.31	110.43
2	E	2	NAG	O5-C1-C2	-2.42	107.55	111.29
3	C	2	NAG	O5-C1-C2	2.39	114.99	111.29
3	C	4	MAN	O5-C1-C2	-2.32	105.25	110.79
3	C	6	MAN	C6-C5-C4	-2.28	107.41	113.02
2	E	2	NAG	C1-C2-N2	2.28	114.02	110.43
2	B	1	NAG	C2-N2-C7	2.21	125.86	122.90

Continued on next page...

Continued from previous page...

Mol	Chain	Res	Type	Atoms	Z	Observed(°)	Ideal(°)
3	C	5	MAN	C1-O5-C5	-2.20	109.24	112.19
3	C	1	NAG	O4-C4-C5	-2.19	103.93	109.32
3	C	1	NAG	C1-O5-C5	2.11	115.01	112.19
4	D	4	MAN	O5-C1-C2	-2.03	105.95	110.79

There are no chirality outliers.

All (2) torsion outliers are listed below:

Mol	Chain	Res	Type	Atoms
3	C	4	MAN	C4-C5-C6-O6
3	C	4	MAN	O5-C5-C6-O6

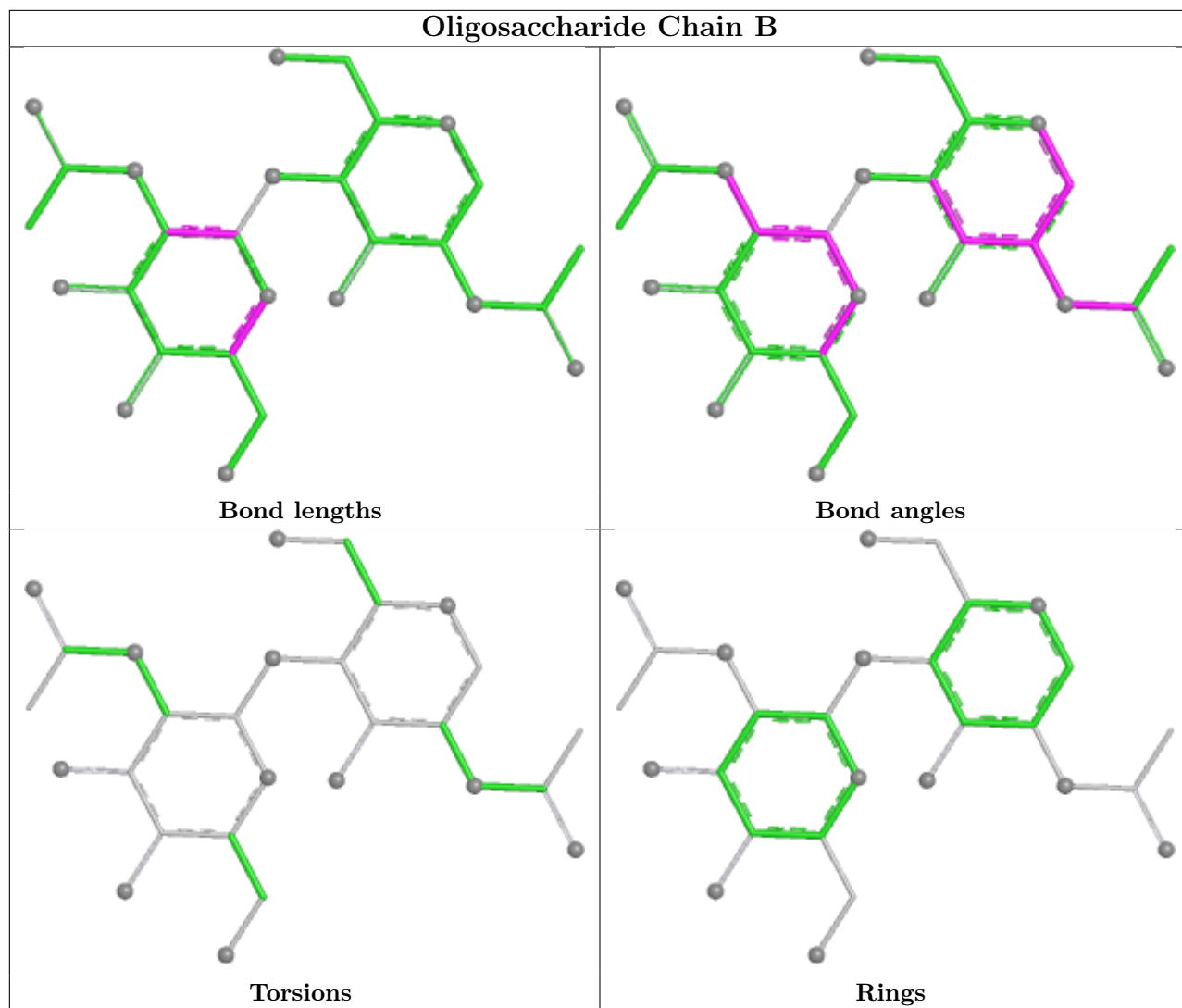
All (1) ring outliers are listed below:

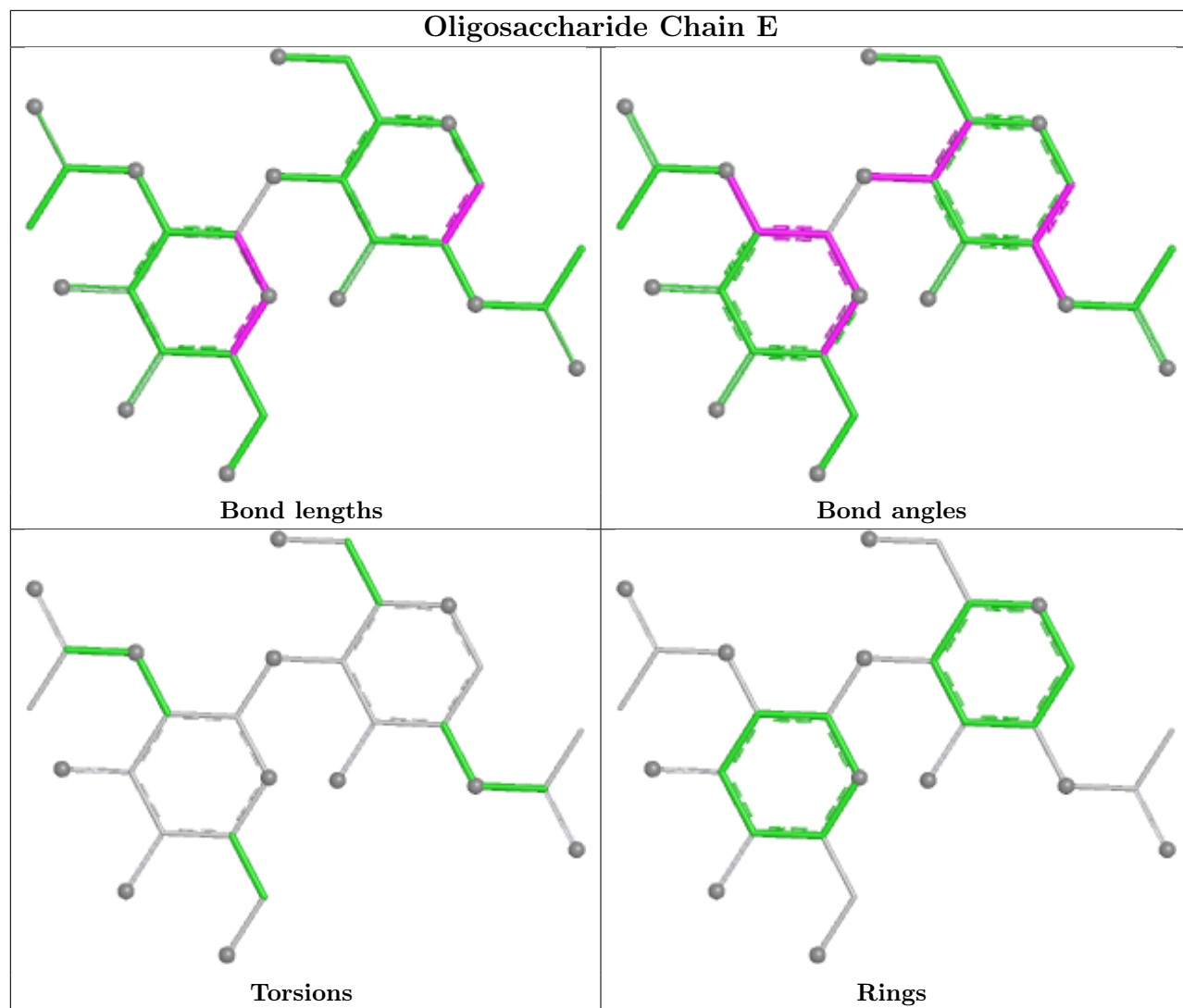
Mol	Chain	Res	Type	Atoms
4	D	6	MAN	C1-C2-C3-C4-C5-O5

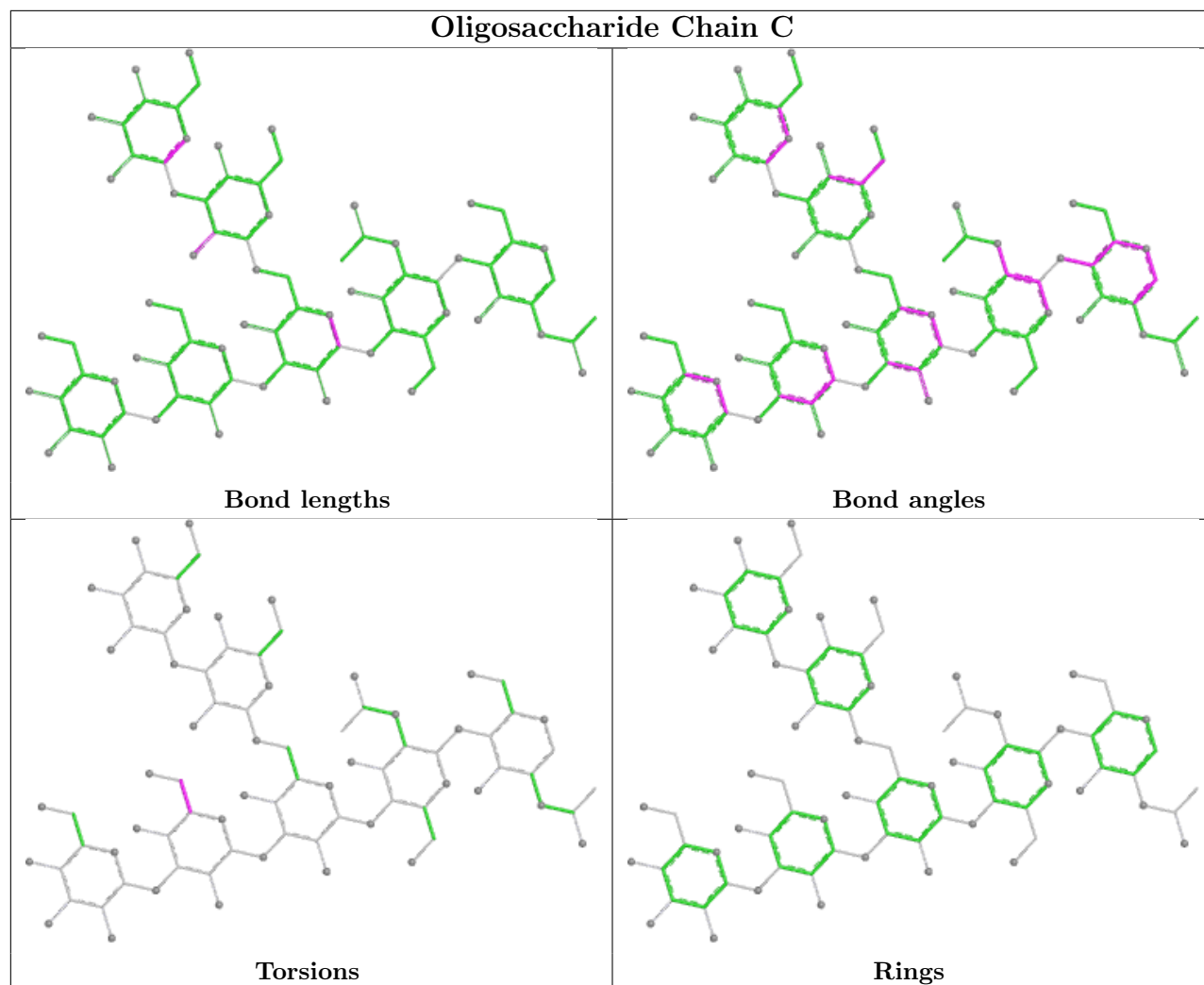
1 monomer is involved in 1 short contact:

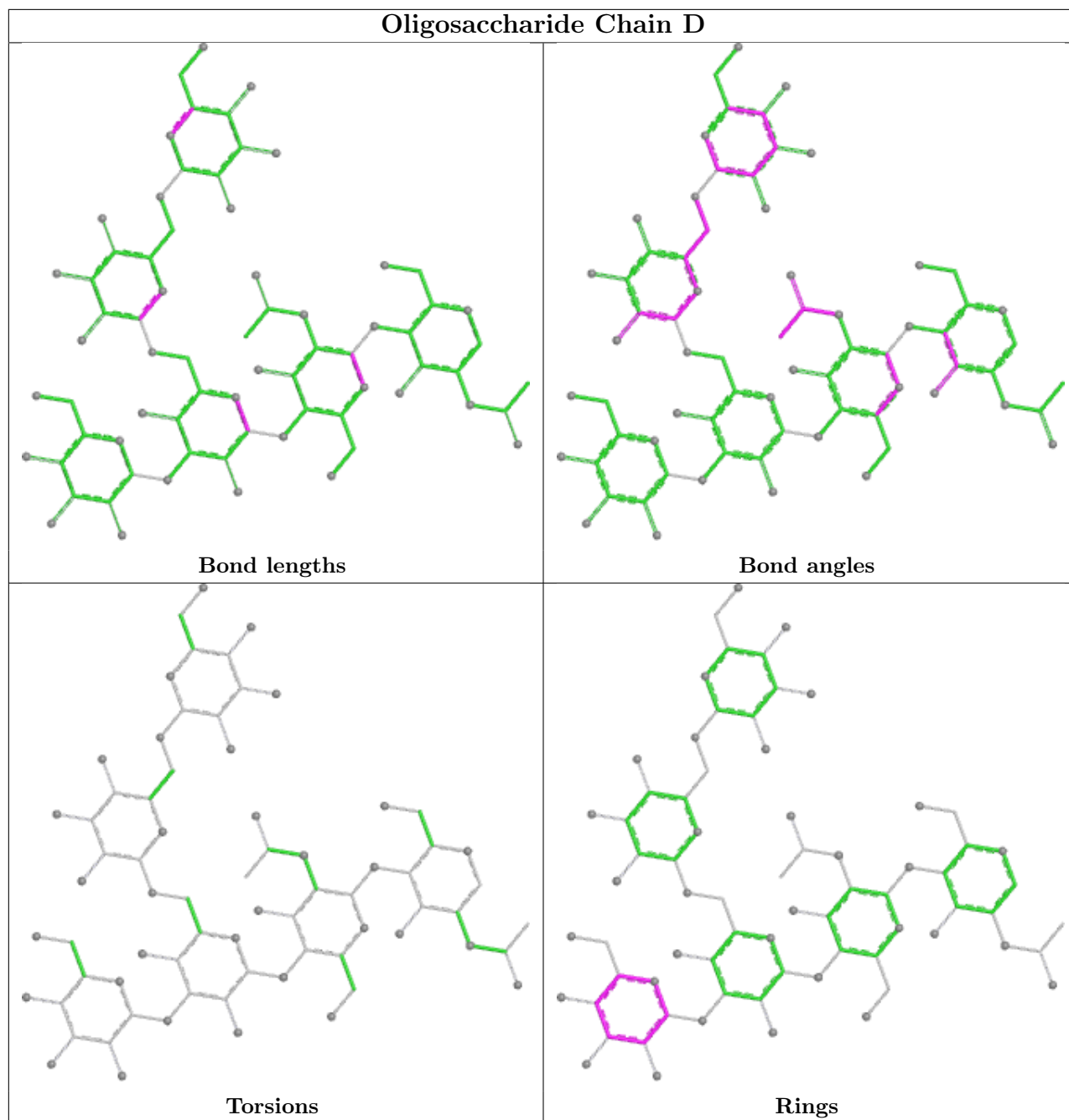
Mol	Chain	Res	Type	Clashes	Symm-Clashes
3	C	5	MAN	1	0

The following is a two-dimensional graphical depiction of Mogul quality analysis of bond lengths, bond angles, torsion angles, and ring geometry for oligosaccharide.









5.6 Ligand geometry [\(i\)](#)

2 ligands are modelled in this entry.

In the following table, the Counts columns list the number of bonds (or angles) for which Mogul statistics could be retrieved, the number of bonds (or angles) that are observed in the model and the number of bonds (or angles) that are defined in the Chemical Component Dictionary. The Link column lists molecule types, if any, to which the group is linked. The Z score for a bond length (or angle) is the number of standard deviations the observed value is removed from the expected value. A bond length (or angle) with $|Z| > 2$ is considered an outlier worth inspection. RMSZ is the root-mean-square of all Z scores of the bond lengths (or angles).

Mol	Type	Chain	Res	Link	Bond lengths			Bond angles		
					Counts	RMSZ	# Z > 2	Counts	RMSZ	# Z > 2
5	GOL	A	901	-	5,5,5	0.29	0	5,5,5	1.82	1 (20%)
5	GOL	A	900	-	5,5,5	1.29	1 (20%)	5,5,5	1.29	0

In the following table, the Chirals column lists the number of chiral outliers, the number of chiral centers analysed, the number of these observed in the model and the number defined in the Chemical Component Dictionary. Similar counts are reported in the Torsion and Rings columns. '-' means no outliers of that kind were identified.

Mol	Type	Chain	Res	Link	Chirals	Torsions	Rings
5	GOL	A	901	-	-	1/4/4/4	-
5	GOL	A	900	-	-	0/4/4/4	-

All (1) bond length outliers are listed below:

Mol	Chain	Res	Type	Atoms	Z	Observed(Å)	Ideal(Å)
5	A	900	GOL	C3-C2	-2.20	1.43	1.51

All (1) bond angle outliers are listed below:

Mol	Chain	Res	Type	Atoms	Z	Observed(°)	Ideal(°)
5	A	901	GOL	O3-C3-C2	2.88	123.34	110.38

There are no chirality outliers.

All (1) torsion outliers are listed below:

Mol	Chain	Res	Type	Atoms
5	A	901	GOL	C1-C2-C3-O3

There are no ring outliers.

1 monomer is involved in 5 short contacts:

Mol	Chain	Res	Type	Clashes	Symm-Clashes
5	A	901	GOL	5	0

5.7 Other polymers [i](#)

There are no such residues in this entry.

5.8 Polymer linkage issues

There are no chain breaks in this entry.

6 Fit of model and data [i](#)

6.1 Protein, DNA and RNA chains [i](#)

In the following table, the column labelled ‘#RSRZ> 2’ contains the number (and percentage) of RSRZ outliers, followed by percent RSRZ outliers for the chain as percentile scores relative to all X-ray entries and entries of similar resolution. The OWAB column contains the minimum, median, 95th percentile and maximum values of the occupancy-weighted average B-factor per residue. The column labelled ‘Q< 0.9’ lists the number of (and percentage) of residues with an average occupancy less than 0.9.

Mol	Chain	Analysed	<RSRZ>	#RSRZ>2	OWAB(Å ²)	Q<0.9
1	A	417/417 (100%)	-0.08	8 (1%) 66 72	19, 25, 34, 46	0

All (8) RSRZ outliers are listed below:

Mol	Chain	Res	Type	RSRZ
1	A	4	PRO	6.2
1	A	7	VAL	4.5
1	A	2	VAL	4.0
1	A	360	ILE	3.1
1	A	6	GLY	2.9
1	A	416	ARG	2.7
1	A	140	TRP	2.1
1	A	156	PRO	2.1

6.2 Non-standard residues in protein, DNA, RNA chains [i](#)

There are no non-standard protein/DNA/RNA residues in this entry.

6.3 Carbohydrates [i](#)

In the following table, the Atoms column lists the number of modelled atoms in the group and the number defined in the chemical component dictionary. The B-factors column lists the minimum, median, 95th percentile and maximum values of B factors of atoms in the group. The column labelled ‘Q< 0.9’ lists the number of atoms with occupancy less than 0.9.

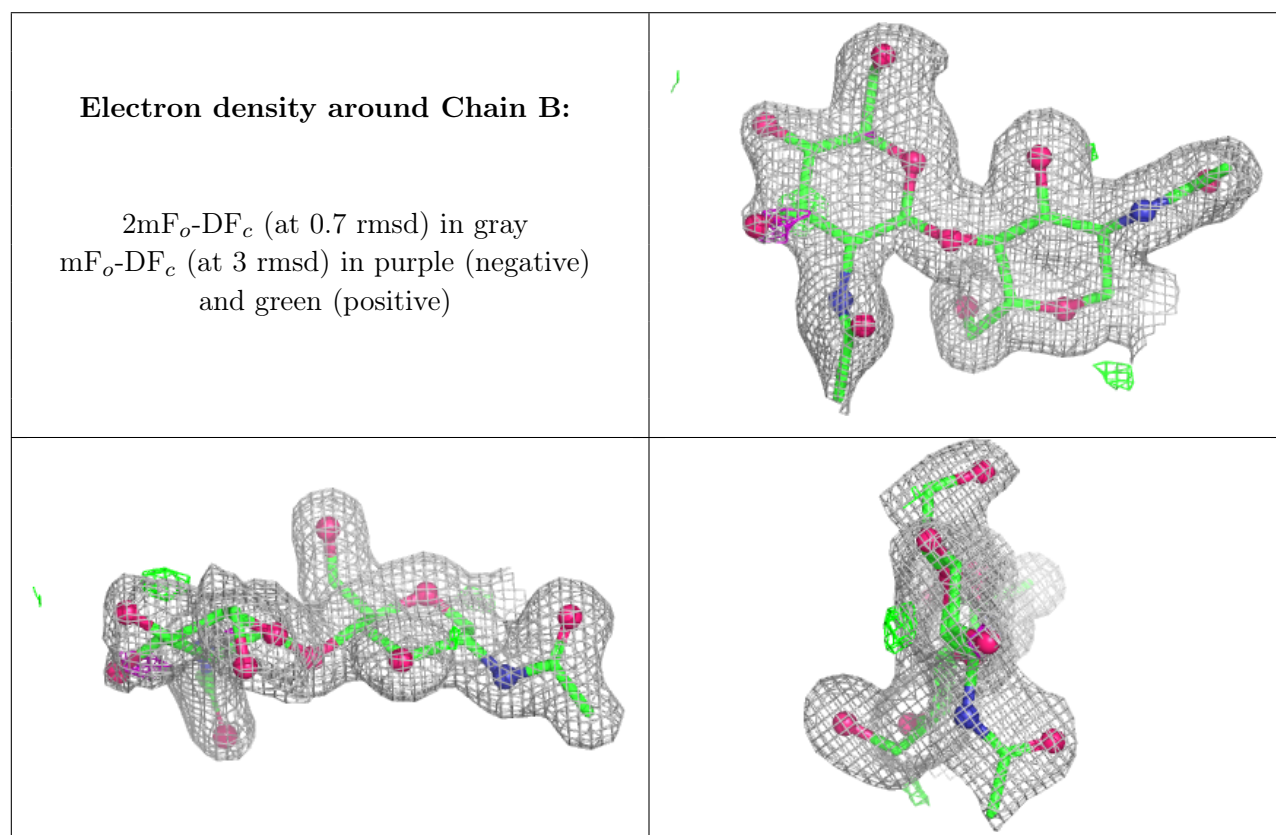
Mol	Type	Chain	Res	Atoms	RSCC	RSR	B-factors(Å ²)	Q<0.9
4	BMA	D	5	11/12	0.44	0.45	83,84,84,84	0
3	MAN	C	5	11/12	0.45	0.28	53,56,58,60	0
3	MAN	C	4	11/12	0.58	0.35	47,53,56,61	0
4	MAN	D	6	11/12	0.60	0.40	53,60,64,64	0

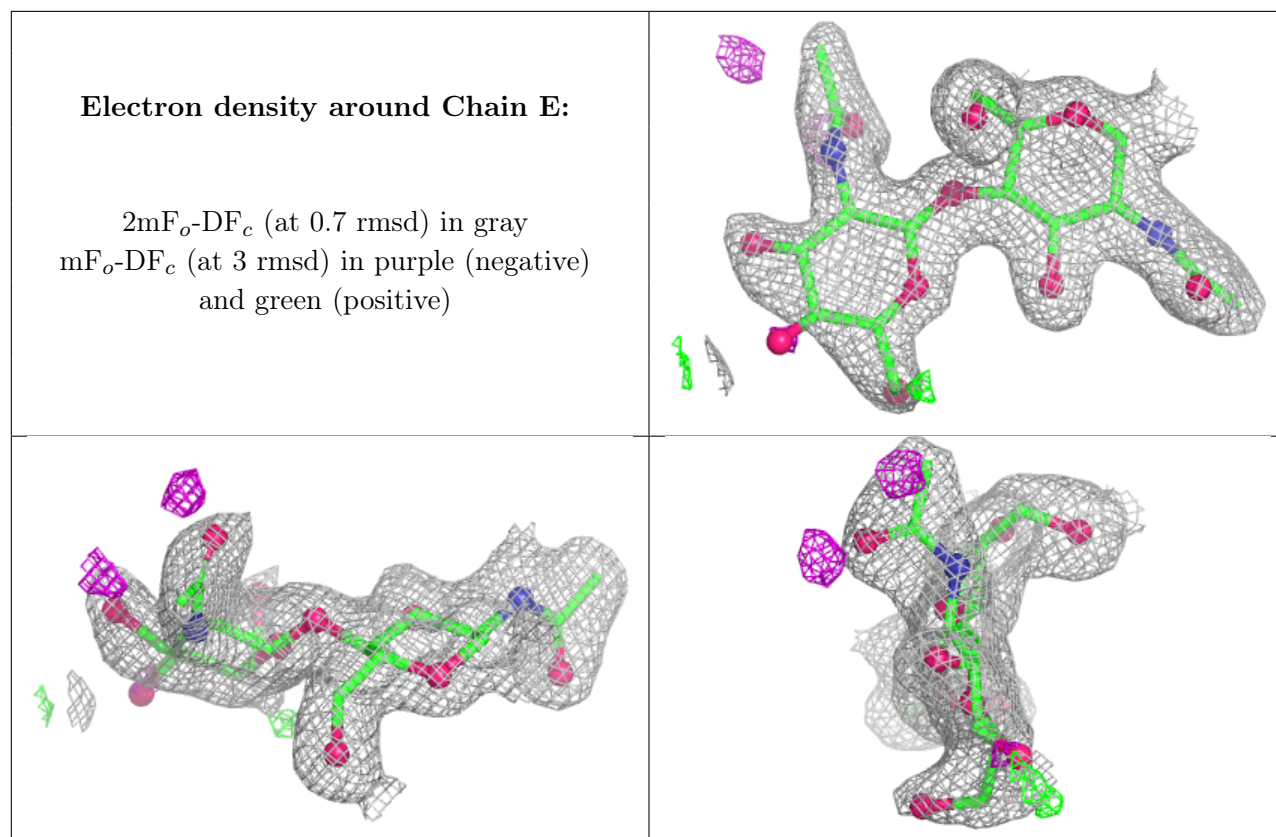
Continued on next page...

Continued from previous page...

Mol	Type	Chain	Res	Atoms	RSCC	RSR	B-factors(\AA^2)	Q<0.9
4	MAN	D	4	11/12	0.65	0.29	72,73,76,80	0
2	NAG	E	2	14/15	0.71	0.33	47,50,56,58	0
2	NAG	B	2	14/15	0.84	0.25	37,44,50,53	0
2	NAG	E	1	14/15	0.86	0.14	32,35,39,40	0
3	MAN	C	6	11/12	0.90	0.16	27,31,38,44	0
3	BMA	C	3	11/12	0.90	0.12	33,36,38,43	0
3	MAN	C	7	11/12	0.91	0.08	24,26,31,35	0
3	NAG	C	2	14/15	0.92	0.09	29,31,33,35	0
4	NAG	D	1	14/15	0.93	0.07	24,27,30,30	0
4	NAG	D	2	14/15	0.93	0.07	27,29,31,31	0
4	BMA	D	3	11/12	0.93	0.11	33,38,44,48	0
3	NAG	C	1	14/15	0.95	0.08	27,32,36,38	0
2	NAG	B	1	14/15	0.96	0.07	21,24,27,30	0

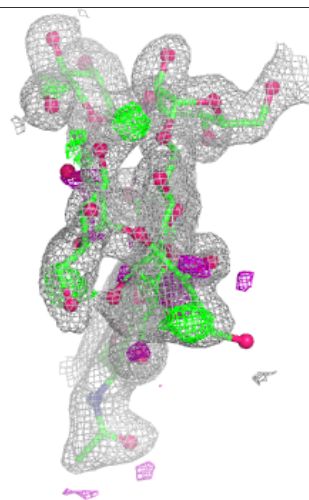
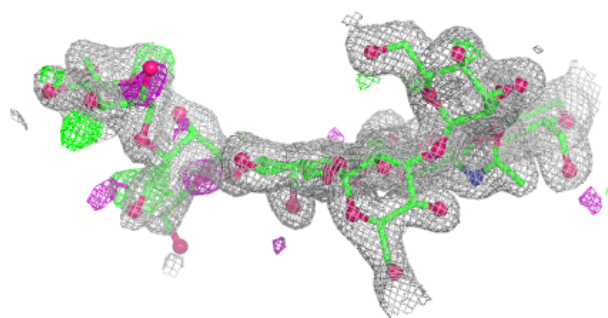
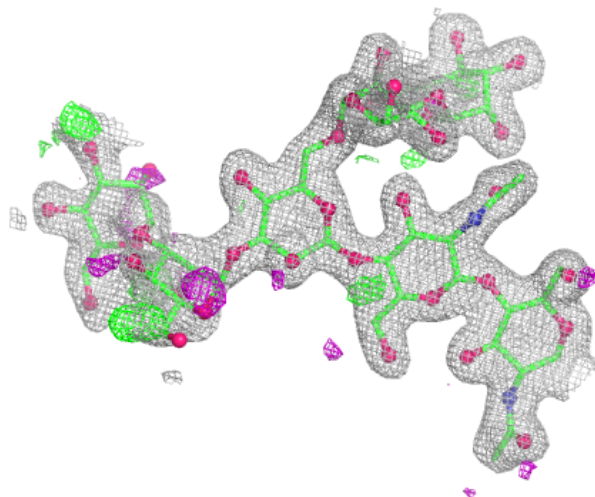
The following is a graphical depiction of the model fit to experimental electron density for oligosaccharide. Each fit is shown from different orientation to approximate a three-dimensional view.

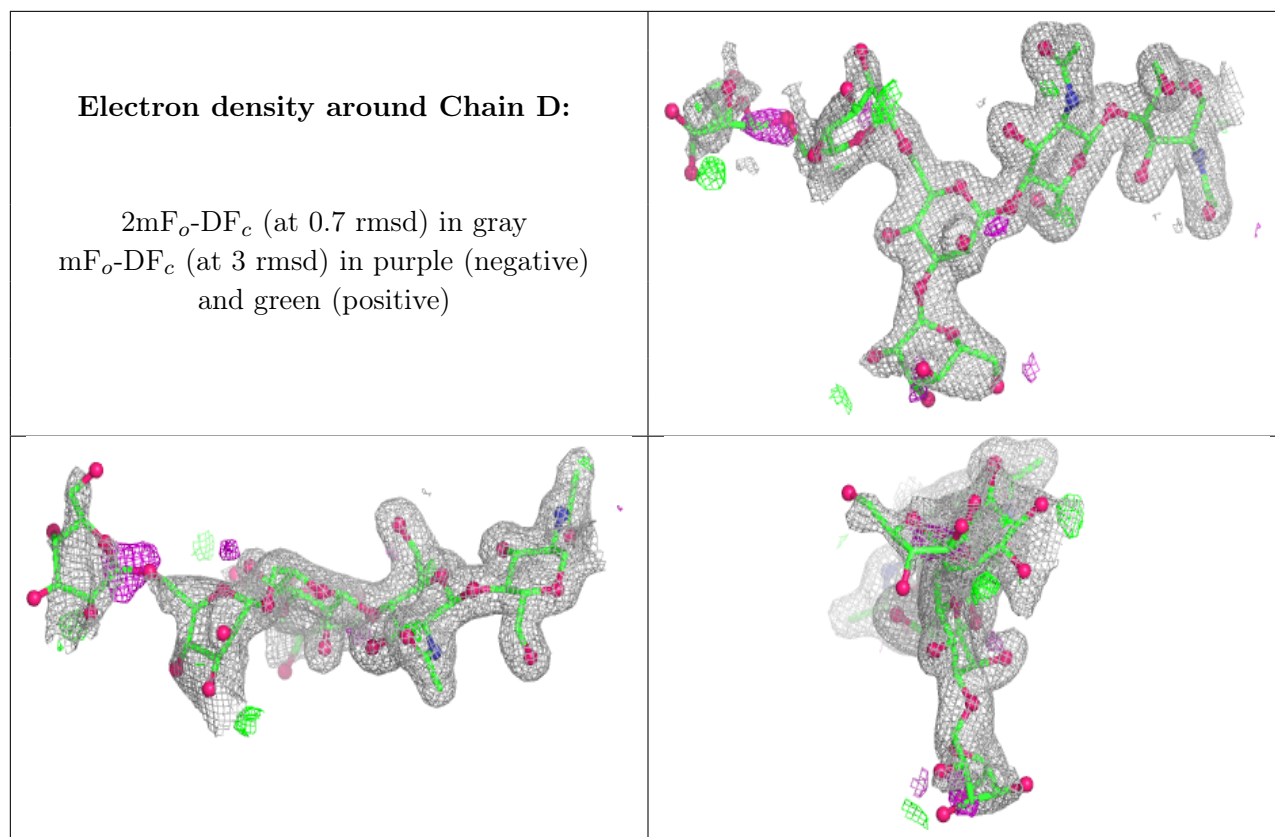




Electron density around Chain C:

$2mF_o-DF_c$ (at 0.7 rmsd) in gray
 mF_o-DF_c (at 3 rmsd) in purple (negative)
and green (positive)





6.4 Ligands [i](#)

In the following table, the Atoms column lists the number of modelled atoms in the group and the number defined in the chemical component dictionary. The B-factors column lists the minimum, median, 95th percentile and maximum values of B factors of atoms in the group. The column labelled 'Q< 0.9' lists the number of atoms with occupancy less than 0.9.

Mol	Type	Chain	Res	Atoms	RSCC	RSR	B-factors(Å ²)	Q<0.9
5	GOL	A	901	6/6	0.80	0.14	29,42,43,47	0
5	GOL	A	900	6/6	0.98	0.08	21,22,23,23	0

6.5 Other polymers [i](#)

There are no such residues in this entry.