



Full wwPDB X-ray Structure Validation Report ⓘ

Sep 3, 2023 – 02:38 PM EDT

PDB ID : 3T1D
Title : The mutant structure of human Siderocalin W79A, R81A, Y106F bound to Enterobactin
Authors : Seattle Structural Genomics Center for Infectious Disease; Seattle Structural Genomics Center for Infectious Disease (SSGCID)
Deposited on : 2011-07-21
Resolution : 2.30 Å(reported)

This is a Full wwPDB X-ray Structure Validation Report for a publicly released PDB entry.

We welcome your comments at validation@mail.wwpdb.org

A user guide is available at

<https://www.wwpdb.org/validation/2017/XrayValidationReportHelp>

with specific help available everywhere you see the ⓘ symbol.

The types of validation reports are described at

<http://www.wwpdb.org/validation/2017/FAQs#types>.

The following versions of software and data (see [references ⓘ](#)) were used in the production of this report:

MolProbity : 4.02b-467
Mogul : 1.8.5 (274361), CSD as541be (2020)
Xtriage (Phenix) : 1.13
EDS : 2.35
buster-report : 1.1.7 (2018)
Percentile statistics : 20191225.v01 (using entries in the PDB archive December 25th 2019)
Refmac : 5.8.0158
CCP4 : 7.0.044 (Gargrove)
Ideal geometry (proteins) : Engh & Huber (2001)
Ideal geometry (DNA, RNA) : Parkinson et al. (1996)
Validation Pipeline (wwPDB-VP) : 2.35

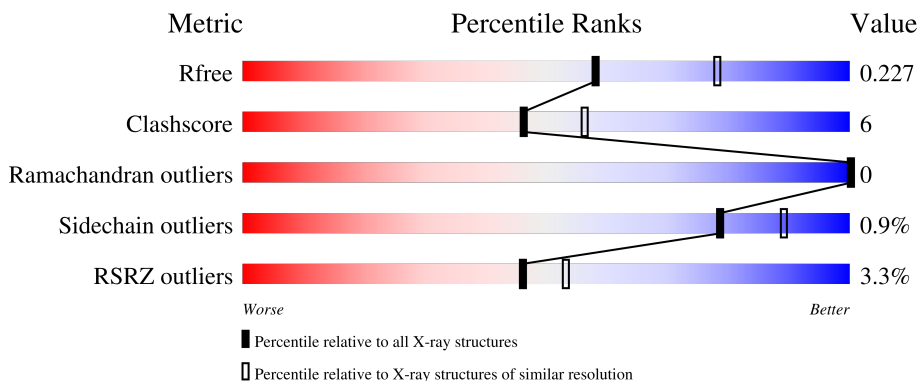
1 Overall quality at a glance

The following experimental techniques were used to determine the structure:

X-RAY DIFFRACTION

The reported resolution of this entry is 2.30 Å.

Percentile scores (ranging between 0-100) for global validation metrics of the entry are shown in the following graphic. The table shows the number of entries on which the scores are based.



Metric	Whole archive (#Entries)	Similar resolution (#Entries, resolution range(Å))
R_{free}	130704	5042 (2.30-2.30)
Clashscore	141614	5643 (2.30-2.30)
Ramachandran outliers	138981	5575 (2.30-2.30)
Sidechain outliers	138945	5575 (2.30-2.30)
RSRZ outliers	127900	4938 (2.30-2.30)

The table below summarises the geometric issues observed across the polymeric chains and their fit to the electron density. The red, orange, yellow and green segments of the lower bar indicate the fraction of residues that contain outliers for ≥ 3 , 2, 1 and 0 types of geometric quality criteria respectively. A grey segment represents the fraction of residues that are not modelled. The numeric value for each fraction is indicated below the corresponding segment, with a dot representing fractions $\leq 5\%$. The upper red bar (where present) indicates the fraction of residues that have poor fit to the electron density. The numeric value is given above the bar.

Mol	Chain	Length	Quality of chain
1	A	198	 4% 82% 6% 12%
1	B	198	 79% 8% 12%
1	C	198	 5% 78% 9% 13%

The following table lists non-polymeric compounds, carbohydrate monomers and non-standard

residues in protein, DNA, RNA chains that are outliers for geometric or electron-density-fit criteria:

Mol	Type	Chain	Res	Chirality	Geometry	Clashes	Electron density
2	GOL	B	179	-	-	X	X
2	GOL	B	180	-	-	X	X
5	UNX	A	187	-	-	-	X

2 Entry composition

There are 8 unique types of molecules in this entry. The entry contains 4545 atoms, of which 0 are hydrogens and 0 are deuteriums.

In the tables below, the ZeroOcc column contains the number of atoms modelled with zero occupancy, the AltConf column contains the number of residues with at least one atom in alternate conformation and the Trace column contains the number of residues modelled with at most 2 atoms.

- Molecule 1 is a protein called Neutrophil gelatinase-associated lipocalin.

Mol	Chain	Residues	Atoms					ZeroOcc	AltConf	Trace
			Total	C	N	O	S			
1	A	175	1419	918	234	263	4	0	5	0
1	B	174	1394	902	228	260	4	0	3	0
1	C	172	1359	884	222	249	4	0	1	0

There are 12 discrepancies between the modelled and reference sequences:

Chain	Residue	Modelled	Actual	Comment	Reference
A	79	ALA	TRP	engineered mutation	UNP P80188
A	81	ALA	ARG	engineered mutation	UNP P80188
A	87	SER	CYS	SEE REMARK 999	UNP P80188
A	106	PHE	TYR	engineered mutation	UNP P80188
B	79	ALA	TRP	engineered mutation	UNP P80188
B	81	ALA	ARG	engineered mutation	UNP P80188
B	87	SER	CYS	SEE REMARK 999	UNP P80188
B	106	PHE	TYR	engineered mutation	UNP P80188
C	79	ALA	TRP	engineered mutation	UNP P80188
C	81	ALA	ARG	engineered mutation	UNP P80188
C	87	SER	CYS	SEE REMARK 999	UNP P80188
C	106	PHE	TYR	engineered mutation	UNP P80188

- Molecule 2 is GLYCEROL (three-letter code: GOL) (formula: C₃H₈O₃).

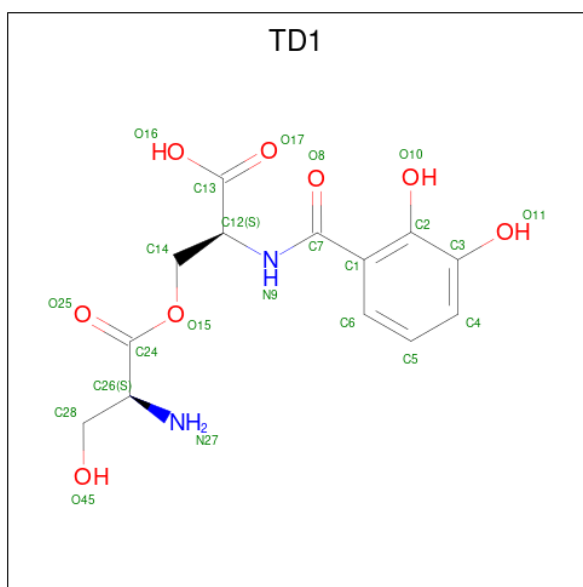


Mol	Chain	Residues	Atoms	ZeroOcc	AltConf
2	A	1	Total C O 6 3 3	0	0
2	A	1	Total C O 6 3 3	0	0
2	A	1	Total C O 6 3 3	0	0
2	A	1	Total C O 6 3 3	0	0
2	B	1	Total C O 6 3 3	0	0
2	B	1	Total C O 6 3 3	0	0
2	C	1	Total C O 6 3 3	0	0

- Molecule 3 is CHLORIDE ION (three-letter code: CL) (formula: Cl).

Mol	Chain	Residues	Atoms	ZeroOcc	AltConf
3	A	3	Total Cl 3 3	0	0

- Molecule 4 is O-[(2S)-2-amino-3-hydroxypropanoyl]-N-(2,3-dihydroxybenzoyl)-L-serine (three-letter code: TD1) (formula: C₁₃H₁₆N₂O₈).

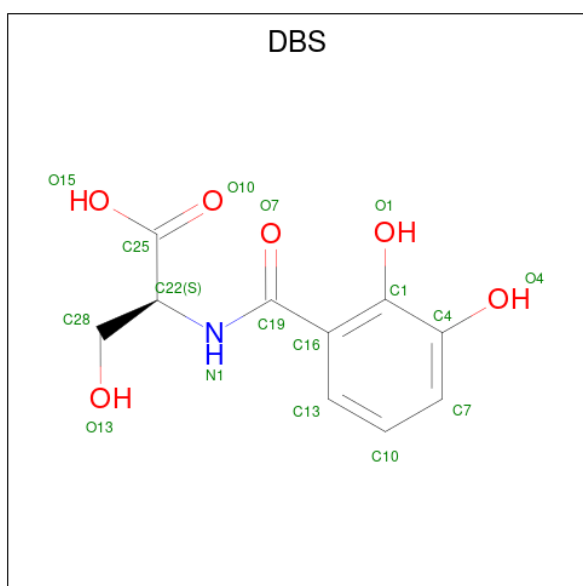


Mol	Chain	Residues	Atoms				ZeroOcc	AltConf
			Total	C	N	O		
4	A	1	23	13	2	8	0	0

- Molecule 5 is UNKNOWN ATOM OR ION (three-letter code: UNX) (formula: X).

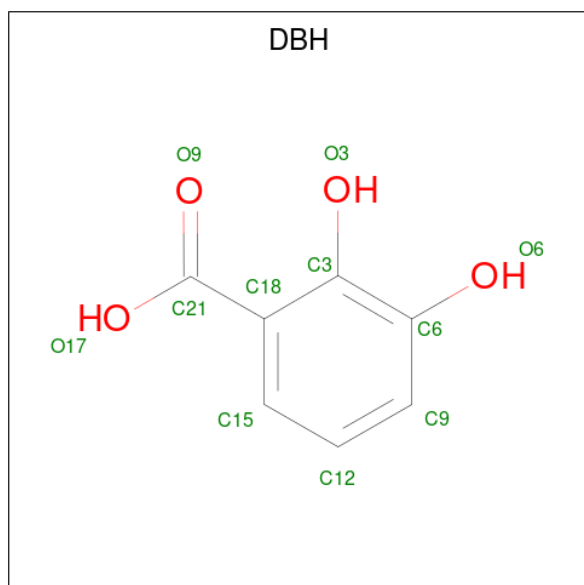
Mol	Chain	Residues	Atoms		ZeroOcc	AltConf
			Total	X		
5	A	1	1	1	0	0

- Molecule 6 is 2-(2,3-DIHYDROXY-BENZOYLAMINO)-3-HYDROXY-PROPIONIC ACID (three-letter code: DBS) (formula: C₁₀H₁₁NO₆).



Mol	Chain	Residues	Atoms				ZeroOcc	AltConf
6	B	1	Total	C	N	O	0	0
			17	10	1	6		
6	C	1	Total	C	N	O	0	0
			17	10	1	6		

- Molecule 7 is 2,3-DIHYDROXY-BENZOIC ACID (three-letter code: DBH) (formula: $C_7H_6O_4$).



Mol	Chain	Residues	Atoms			ZeroOcc	AltConf
7	B	1	Total	C	O	0	0
			11	7	4		


- Molecule 8 is water.

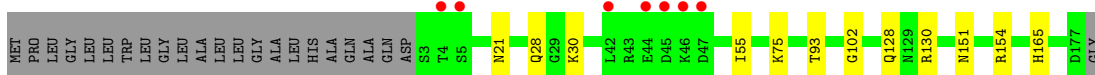
Mol	Chain	Residues	Atoms		ZeroOcc	AltConf
8	A	114	Total	O	0	0
			114	114		
8	B	96	Total	O	0	0
			96	96		
8	C	49	Total	O	0	0
			49	49		

3 Residue-property plots [i](#)


These plots are drawn for all protein, RNA, DNA and oligosaccharide chains in the entry. The first graphic for a chain summarises the proportions of the various outlier classes displayed in the second graphic. The second graphic shows the sequence view annotated by issues in geometry and electron density. Residues are color-coded according to the number of geometric quality criteria for which they contain at least one outlier: green = 0, yellow = 1, orange = 2 and red = 3 or more. A red dot above a residue indicates a poor fit to the electron density ($RSRZ > 2$). Stretches of 2 or more consecutive residues without any outlier are shown as a green connector. Residues present in the sample, but not in the model, are shown in grey.

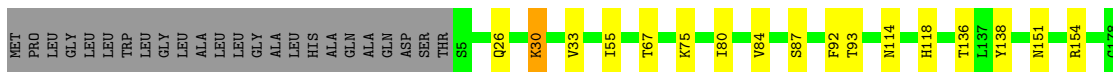
- Molecule 1: Neutrophil gelatinase-associated lipocalin

Chain A: 




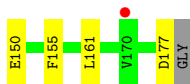
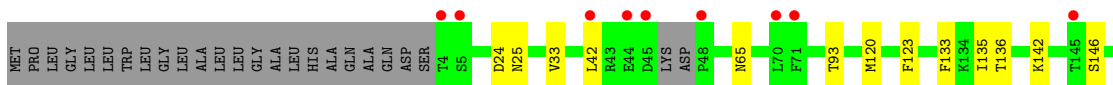
- Molecule 1: Neutrophil gelatinase-associated lipocalin

Chain B: 



- Molecule 1: Neutrophil gelatinase-associated lipocalin

Chain C: 



4 Data and refinement statistics

Property	Value	Source
Space group	P 41 21 2	Depositor
Cell constants a, b, c, α , β , γ	114.75Å 114.75Å 119.06Å 90.00° 90.00° 90.00°	Depositor
Resolution (Å)	48.00 – 2.30 47.13 – 2.30	Depositor EDS
% Data completeness (in resolution range)	96.6 (48.00-2.30) 96.6 (47.13-2.30)	Depositor EDS
R_{merge}	0.07	Depositor
R_{sym}	(Not available)	Depositor
$\langle I/\sigma(I) \rangle$ ¹	2.71 (at 2.29Å)	Xtriage
Refinement program	REFMAC	Depositor
R, R_{free}	0.189 , 0.228 0.189 , 0.227	Depositor DCC
R_{free} test set	3323 reflections (9.58%)	wwPDB-VP
Wilson B-factor (Å ²)	32.3	Xtriage
Anisotropy	0.005	Xtriage
Bulk solvent k_{sol} (e/Å ³), B_{sol} (Å ²)	0.37 , 44.9	EDS
L-test for twinning ²	$\langle L \rangle = 0.50$, $\langle L^2 \rangle = 0.33$	Xtriage
Estimated twinning fraction	0.015 for -h,l,k 0.009 for -l,-k,-h	Xtriage
F_o, F_c correlation	0.95	EDS
Total number of atoms	4545	wwPDB-VP
Average B, all atoms (Å ²)	32.0	wwPDB-VP

Xtriage's analysis on translational NCS is as follows: *The largest off-origin peak in the Patterson function is 3.40% of the height of the origin peak. No significant pseudotranslation is detected.*

¹Intensities estimated from amplitudes.

²Theoretical values of $\langle |L| \rangle$, $\langle L^2 \rangle$ for acentric reflections are 0.5, 0.333 respectively for untwinned datasets, and 0.375, 0.2 for perfectly twinned datasets.

5 Model quality [i](#)

5.1 Standard geometry [i](#)

Bond lengths and bond angles in the following residue types are not validated in this section: CL, DBS, TD1, DBH, GOL, UNX

The Z score for a bond length (or angle) is the number of standard deviations the observed value is removed from the expected value. A bond length (or angle) with $|Z| > 5$ is considered an outlier worth inspection. RMSZ is the root-mean-square of all Z scores of the bond lengths (or angles).

Mol	Chain	Bond lengths		Bond angles	
		RMSZ	# Z >5	RMSZ	# Z >5
1	A	0.64	0/1469	0.74	1/1994 (0.1%)
1	B	0.56	0/1438	0.68	0/1952
1	C	0.52	0/1396	0.65	0/1895
All	All	0.57	0/4303	0.69	1/5841 (0.0%)

There are no bond length outliers.

All (1) bond angle outliers are listed below:

Mol	Chain	Res	Type	Atoms	Z	Observed(°)	Ideal(°)
1	A	28	GLN	CB-CA-C	-5.19	100.03	110.40

There are no chirality outliers.

There are no planarity outliers.

5.2 Too-close contacts [i](#)

In the following table, the Non-H and H(model) columns list the number of non-hydrogen atoms and hydrogen atoms in the chain respectively. The H(added) column lists the number of hydrogen atoms added and optimized by MolProbity. The Clashes column lists the number of clashes within the asymmetric unit, whereas Symm-Clashes lists symmetry-related clashes.

Mol	Chain	Non-H	H(model)	H(added)	Clashes	Symm-Clashes
1	A	1419	0	1400	9	0
1	B	1394	0	1367	15	0
1	C	1359	0	1330	11	0
2	A	24	0	32	8	0
2	B	12	0	16	18	0
2	C	6	0	8	0	0
3	A	3	0	0	0	0

Continued on next page...

Continued from previous page...

Mol	Chain	Non-H	H(model)	H(added)	Clashes	Symm-Clashes
4	A	23	0	14	1	0
5	A	1	0	0	0	0
6	B	17	0	8	1	0
6	C	17	0	9	2	0
7	B	11	0	4	2	0
8	A	114	0	0	3	0
8	B	96	0	0	3	0
8	C	49	0	0	0	0
All	All	4545	0	4188	53	0

The all-atom clashscore is defined as the number of clashes found per 1000 atoms (including hydrogen atoms). The all-atom clashscore for this structure is 6.

All (53) close contacts within the same asymmetric unit are listed below, sorted by their clash magnitude.

Atom-1	Atom-2	Interatomic distance (Å)	Clash overlap (Å)
1:B:114:ASN:HD22	2:B:179:GOL:H31	1.29	0.94
1:B:114:ASN:ND2	2:B:179:GOL:H31	1.84	0.90
2:B:179:GOL:H32	2:B:180:GOL:O1	1.71	0.89
1:C:146:SER:O	1:C:150:GLU:HG2	1.82	0.79
2:B:179:GOL:C3	2:B:180:GOL:H31	2.13	0.79
2:B:179:GOL:H32	2:B:180:GOL:C3	2.15	0.77
2:B:179:GOL:O3	2:B:180:GOL:H31	1.84	0.76
4:A:186:TD1:O16	8:A:383:HOH:O	2.08	0.70
2:A:179:GOL:H11	1:B:75:LYS:NZ	2.08	0.69
1:A:21:ASN:H	2:A:185:GOL:H2	1.58	0.68
2:B:179:GOL:H32	2:B:180:GOL:C1	2.27	0.64
2:B:179:GOL:C3	2:B:180:GOL:C3	2.77	0.61
1:A:130:ARG:HD2	8:A:218:HOH:O	2.01	0.61
2:B:179:GOL:H32	2:B:180:GOL:H31	1.78	0.61
1:B:93:THR:HB	8:B:364:HOH:O	2.01	0.61
2:A:179:GOL:H11	1:B:75:LYS:HZ1	1.65	0.59
1:B:33:VAL:HG13	1:B:136[A]:THR:HG23	1.84	0.59
2:B:179:GOL:H32	2:B:180:GOL:C2	2.33	0.59
1:C:120:MET:CE	1:C:135:ILE:HG21	2.33	0.58
1:A:93:THR:HB	2:A:182:GOL:H31	1.86	0.57
7:B:182:DBH:O9	8:B:395:HOH:O	2.18	0.56
1:B:30:LYS:HG3	1:B:55:ILE:CD1	2.38	0.54
2:B:179:GOL:C1	2:B:180:GOL:O1	2.56	0.53
1:A:75:LYS:NZ	2:A:184:GOL:O2	2.37	0.53
2:B:179:GOL:C3	2:B:180:GOL:O1	2.51	0.53

Continued on next page...

Continued from previous page...

Atom-1	Atom-2	Interatomic distance (Å)	Clash overlap (Å)
1:B:30:LYS:HG3	1:B:55:ILE:HD12	1.92	0.52
2:B:179:GOL:C3	2:B:180:GOL:C2	2.87	0.52
1:B:87:SER:HB3	1:C:93:THR:HG22	1.92	0.52
1:B:118:HIS:NE2	2:B:179:GOL:O3	2.29	0.51
1:C:123:PHE:HB3	6:C:179:DBS:C10	2.40	0.51
1:B:151[B]:ASN:OD1	1:B:154:ARG:NH2	2.44	0.51
1:A:165:HIS:NE2	2:A:179:GOL:H31	2.27	0.50
1:C:24:ASP:OD1	1:C:25:ASN:N	2.46	0.49
1:B:30:LYS:CG	1:B:55:ILE:CD1	2.90	0.48
1:B:136[A]:THR:HG21	1:B:138:TYR:CE1	2.49	0.47
1:C:33:VAL:HG13	1:C:136:THR:HG23	1.95	0.47
1:C:120:MET:HE1	1:C:155:PHE:HD2	1.80	0.47
1:B:67:THR:HG23	1:B:80:ILE:CD1	2.46	0.45
1:A:151[B]:ASN:OD1	1:A:154:ARG:NH1	2.45	0.45
1:A:21:ASN:N	2:A:185:GOL:H2	2.30	0.44
2:A:185:GOL:H32	8:A:234:HOH:O	2.17	0.43
2:B:179:GOL:C3	2:B:180:GOL:C1	2.94	0.43
2:B:179:GOL:O3	2:B:180:GOL:C3	2.60	0.43
1:A:102:GLY:HA3	1:A:128:GLN:OE1	2.18	0.43
2:B:179:GOL:O1	2:B:180:GOL:O1	2.32	0.43
1:A:30:LYS:NZ	1:A:55:ILE:HD11	2.33	0.42
2:B:179:GOL:O2	8:B:223:HOH:O	2.22	0.42
1:C:123:PHE:HB3	6:C:179:DBS:HC10	2.01	0.42
1:C:133:PHE:CZ	1:C:161:LEU:HD21	2.55	0.42
1:C:120:MET:CE	1:C:155:PHE:CD2	3.03	0.41
6:B:181:DBS:O4	7:B:182:DBH:O3	2.39	0.41
1:C:142:LYS:NZ	1:C:177:ASP:OD2	2.54	0.41
1:B:84:VAL:O	1:B:92:PHE:HA	2.22	0.40

There are no symmetry-related clashes.

5.3 Torsion angles [\(i\)](#)

5.3.1 Protein backbone [\(i\)](#)

In the following table, the Percentiles column shows the percent Ramachandran outliers of the chain as a percentile score with respect to all X-ray entries followed by that with respect to entries of similar resolution.

The Analysed column shows the number of residues for which the backbone conformation was analysed, and the total number of residues.

Mol	Chain	Analysed	Favoured	Allowed	Outliers	Percentiles	
1	A	178/198 (90%)	174 (98%)	4 (2%)	0	100	100
1	B	175/198 (88%)	171 (98%)	4 (2%)	0	100	100
1	C	169/198 (85%)	163 (96%)	6 (4%)	0	100	100
All	All	522/594 (88%)	508 (97%)	14 (3%)	0	100	100

There are no Ramachandran outliers to report.

5.3.2 Protein sidechains [i](#)

In the following table, the Percentiles column shows the percent sidechain outliers of the chain as a percentile score with respect to all X-ray entries followed by that with respect to entries of similar resolution.

The Analysed column shows the number of residues for which the sidechain conformation was analysed, and the total number of residues.

Mol	Chain	Analysed	Rotameric	Outliers	Percentiles	
1	A	158/174 (91%)	158 (100%)	0	100	100
1	B	154/174 (88%)	152 (99%)	2 (1%)	69	82
1	C	148/174 (85%)	146 (99%)	2 (1%)	67	81
All	All	460/522 (88%)	456 (99%)	4 (1%)	78	89

All (4) residues with a non-rotameric sidechain are listed below:

Mol	Chain	Res	Type
1	B	26	GLN
1	B	30	LYS
1	C	42	LEU
1	C	65	ASN

Sometimes sidechains can be flipped to improve hydrogen bonding and reduce clashes. All (1) such sidechains are listed below:

Mol	Chain	Res	Type
1	A	23	GLN

5.3.3 RNA [i](#)

There are no RNA molecules in this entry.

5.4 Non-standard residues in protein, DNA, RNA chains [i](#)

There are no non-standard protein/DNA/RNA residues in this entry.

5.5 Carbohydrates [i](#)

There are no monosaccharides in this entry.

5.6 Ligand geometry [i](#)

Of 15 ligands modelled in this entry, 3 are monoatomic and 1 is unknown - leaving 11 for Mogul analysis.

In the following table, the Counts columns list the number of bonds (or angles) for which Mogul statistics could be retrieved, the number of bonds (or angles) that are observed in the model and the number of bonds (or angles) that are defined in the Chemical Component Dictionary. The Link column lists molecule types, if any, to which the group is linked. The Z score for a bond length (or angle) is the number of standard deviations the observed value is removed from the expected value. A bond length (or angle) with $|Z| > 2$ is considered an outlier worth inspection. RMSZ is the root-mean-square of all Z scores of the bond lengths (or angles).

Mol	Type	Chain	Res	Link	Bond lengths			Bond angles		
					Counts	RMSZ	# Z > 2	Counts	RMSZ	# Z > 2
6	DBS	B	181	-	17,17,17	2.27	3 (17%)	22,23,23	1.34	4 (18%)
2	GOL	A	182	-	5,5,5	0.27	0	5,5,5	1.08	0
2	GOL	A	185	-	5,5,5	0.53	0	5,5,5	0.65	0
6	DBS	C	179	-	17,17,17	0.82	0	22,23,23	2.86	7 (31%)
2	GOL	B	179	-	5,5,5	0.48	0	5,5,5	0.40	0
4	TD1	A	186	-	23,23,23	2.34	4 (17%)	30,31,31	1.61	7 (23%)
2	GOL	A	179	-	5,5,5	0.32	0	5,5,5	0.79	0
2	GOL	A	184	-	5,5,5	0.26	0	5,5,5	0.72	0
2	GOL	C	180	-	5,5,5	0.30	0	5,5,5	0.22	0
2	GOL	B	180	-	5,5,5	0.83	0	5,5,5	0.66	0
7	DBH	B	182	-	11,11,11	0.72	0	15,15,15	1.45	1 (6%)

In the following table, the Chirals column lists the number of chiral outliers, the number of chiral centers analysed, the number of these observed in the model and the number defined in the Chemical Component Dictionary. Similar counts are reported in the Torsion and Rings columns. '-' means no outliers of that kind were identified.

Mol	Type	Chain	Res	Link	Chirals	Torsions	Rings
6	DBS	B	181	-	-	0/14/14/14	0/1/1/1
2	GOL	A	182	-	-	2/4/4/4	-

Continued on next page...

Continued from previous page...

Mol	Type	Chain	Res	Link	Chirals	Torsions	Rings
2	GOL	A	185	-	-	2/4/4/4	-
6	DBS	C	179	-	-	7/14/14/14	0/1/1/1
2	GOL	B	179	-	-	2/4/4/4	-
4	TD1	A	186	-	-	4/23/23/23	0/1/1/1
2	GOL	A	179	-	-	4/4/4/4	-
2	GOL	A	184	-	-	0/4/4/4	-
2	GOL	C	180	-	-	4/4/4/4	-
2	GOL	B	180	-	-	4/4/4/4	-
7	DBH	B	182	-	-	2/4/4/4	0/1/1/1

All (7) bond length outliers are listed below:

Mol	Chain	Res	Type	Atoms	Z	Observed(Å)	Ideal(Å)
6	B	181	DBS	O10-C25	7.87	1.46	1.22
4	A	186	TD1	O17-C13	7.83	1.46	1.22
4	A	186	TD1	O15-C24	6.67	1.47	1.33
6	B	181	DBS	C4-C1	-3.51	1.35	1.40
4	A	186	TD1	C3-C2	-2.80	1.36	1.40
4	A	186	TD1	O16-C13	-2.45	1.22	1.30
6	B	181	DBS	O15-C25	-2.29	1.23	1.30

All (19) bond angle outliers are listed below:

Mol	Chain	Res	Type	Atoms	Z	Observed(°)	Ideal(°)
6	C	179	DBS	C16-C19-N1	7.79	131.22	116.80
6	C	179	DBS	C22-N1-C19	6.35	137.15	121.60
6	C	179	DBS	O7-C19-C16	-4.92	112.01	121.01
7	B	182	DBH	C3-C18-C21	4.34	124.62	119.83
4	A	186	TD1	O15-C24-C26	4.03	121.31	111.59
6	C	179	DBS	C28-C22-N1	-3.84	101.90	110.56
4	A	186	TD1	C1-C2-C3	3.71	122.34	119.99
6	B	181	DBS	O15-C25-O10	-3.28	116.65	124.09
6	C	179	DBS	O7-C19-N1	-3.14	116.68	122.45
6	B	181	DBS	C22-N1-C19	2.81	128.48	121.60
6	C	179	DBS	C25-C22-N1	2.35	116.12	110.55
6	B	181	DBS	O15-C25-C22	2.35	121.20	113.40
4	A	186	TD1	O15-C24-O25	-2.29	119.78	124.13
4	A	186	TD1	O10-C2-C3	-2.29	113.40	119.50
4	A	186	TD1	O16-C13-O17	-2.20	119.09	124.09
6	B	181	DBS	C28-C22-N1	-2.14	105.74	110.56

Continued on next page...

Continued from previous page...

Mol	Chain	Res	Type	Atoms	Z	Observed(°)	Ideal(°)
4	A	186	TD1	C1-C7-N9	2.13	120.75	116.80
6	C	179	DBS	O15-C25-C22	2.11	120.40	113.40
4	A	186	TD1	O16-C13-C12	2.07	120.29	113.40

There are no chirality outliers.

All (31) torsion outliers are listed below:

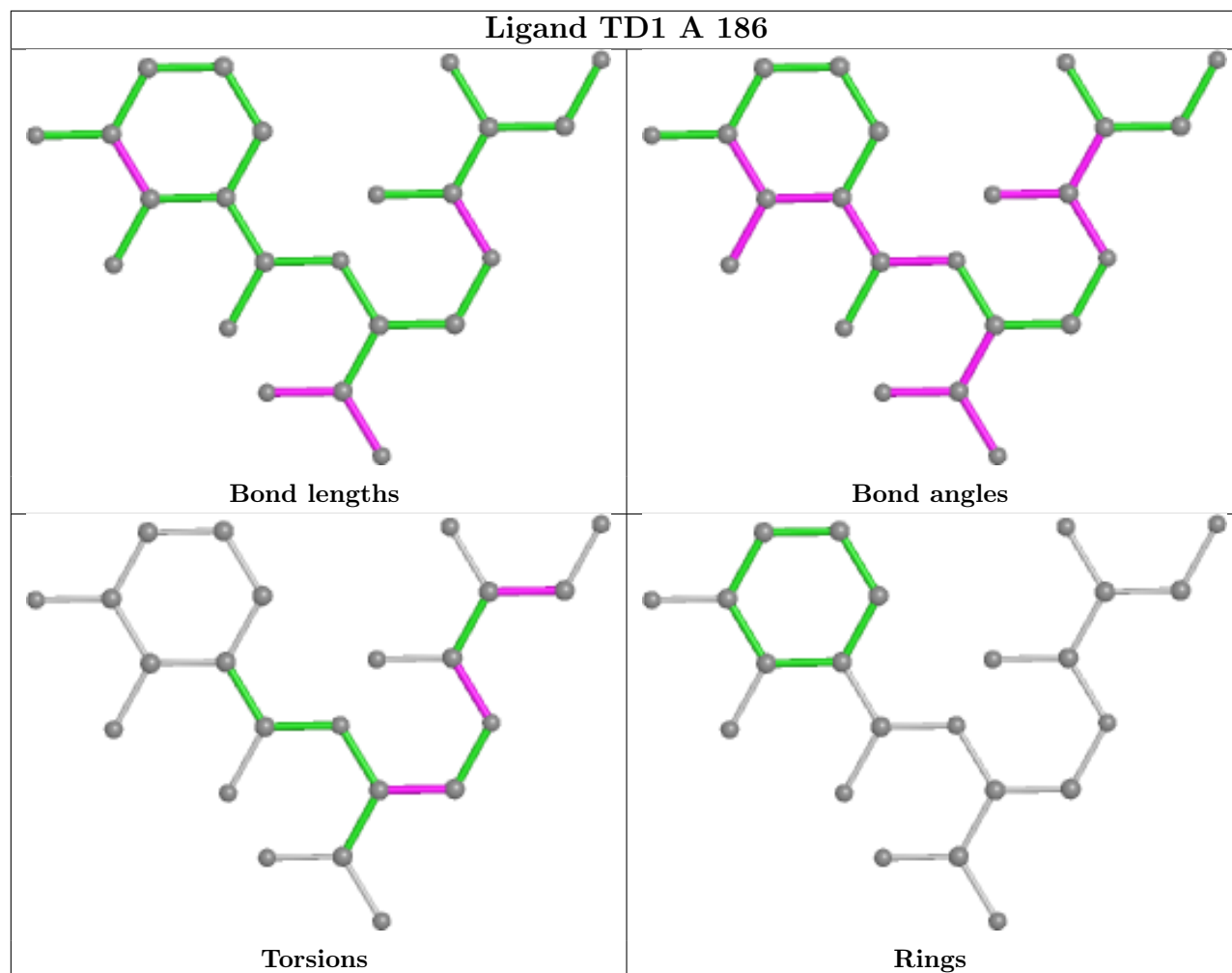
Mol	Chain	Res	Type	Atoms
2	A	179	GOL	C1-C2-C3-O3
2	A	179	GOL	O2-C2-C3-O3
2	A	182	GOL	O1-C1-C2-C3
2	B	179	GOL	O1-C1-C2-O2
2	B	179	GOL	O1-C1-C2-C3
2	B	180	GOL	O1-C1-C2-O2
2	B	180	GOL	O1-C1-C2-C3
2	B	180	GOL	C1-C2-C3-O3
6	C	179	DBS	C16-C19-N1-C22
6	C	179	DBS	O7-C19-N1-C22
4	A	186	TD1	O25-C24-O15-C14
4	A	186	TD1	C26-C24-O15-C14
2	A	179	GOL	O1-C1-C2-C3
2	A	185	GOL	C1-C2-C3-O3
2	C	180	GOL	O1-C1-C2-C3
2	A	182	GOL	O1-C1-C2-O2
2	A	185	GOL	O2-C2-C3-O3
6	C	179	DBS	N1-C22-C28-O13
2	C	180	GOL	O1-C1-C2-O2
6	C	179	DBS	C28-C22-C25-O10
6	C	179	DBS	C28-C22-C25-O15
4	A	186	TD1	C13-C12-C14-O15
7	B	182	DBH	C3-C18-C21-O17
2	A	179	GOL	O1-C1-C2-O2
6	C	179	DBS	N1-C22-C25-O10
6	C	179	DBS	N1-C22-C25-O15
7	B	182	DBH	C3-C18-C21-O9
2	C	180	GOL	O2-C2-C3-O3
4	A	186	TD1	N27-C26-C28-O45
2	B	180	GOL	O2-C2-C3-O3
2	C	180	GOL	C1-C2-C3-O3

There are no ring outliers.

10 monomers are involved in 31 short contacts:

Mol	Chain	Res	Type	Clashes	Symm-Clashes
6	B	181	DBS	1	0
2	A	182	GOL	1	0
2	A	185	GOL	3	0
6	C	179	DBS	2	0
2	B	179	GOL	18	0
4	A	186	TD1	1	0
2	A	179	GOL	3	0
2	A	184	GOL	1	0
2	B	180	GOL	14	0
7	B	182	DBH	2	0

The following is a two-dimensional graphical depiction of Mogul quality analysis of bond lengths, bond angles, torsion angles, and ring geometry for all instances of the Ligand of Interest. In addition, ligands with molecular weight > 250 and outliers as shown on the validation Tables will also be included. For torsion angles, if less than 5% of the Mogul distribution of torsion angles is within 10 degrees of the torsion angle in question, then that torsion angle is considered an outlier. Any bond that is central to one or more torsion angles identified as an outlier by Mogul will be highlighted in the graph. For rings, the root-mean-square deviation (RMSD) between the ring in question and similar rings identified by Mogul is calculated over all ring torsion angles. If the average RMSD is greater than 60 degrees and the minimal RMSD between the ring in question and any Mogul-identified rings is also greater than 60 degrees, then that ring is considered an outlier. The outliers are highlighted in purple. The color gray indicates Mogul did not find sufficient equivalents in the CSD to analyse the geometry.



5.7 Other polymers [i](#)

There are no such residues in this entry.

5.8 Polymer linkage issues [i](#)

There are no chain breaks in this entry.

6 Fit of model and data [i](#)

6.1 Protein, DNA and RNA chains [i](#)

In the following table, the column labelled ‘#RSRZ> 2’ contains the number (and percentage) of RSRZ outliers, followed by percent RSRZ outliers for the chain as percentile scores relative to all X-ray entries and entries of similar resolution. The OWAB column contains the minimum, median, 95th percentile and maximum values of the occupancy-weighted average B-factor per residue. The column labelled ‘Q< 0.9’ lists the number of (and percentage) of residues with an average occupancy less than 0.9.

Mol	Chain	Analysed	<RSRZ>	#RSRZ>2	OWAB(Å ²)	Q<0.9
1	A	175/198 (88%)	-0.13	7 (4%) 38 45	11, 21, 49, 72	0
1	B	174/198 (87%)	-0.12	0 100 100	16, 26, 45, 73	0
1	C	172/198 (86%)	0.26	10 (5%) 23 29	24, 39, 60, 84	0
All	All	521/594 (87%)	0.00	17 (3%) 46 53	11, 29, 55, 84	0

All (17) RSRZ outliers are listed below:

Mol	Chain	Res	Type	RSRZ
1	C	170	VAL	4.3
1	A	47	ASP	3.9
1	C	42	LEU	3.2
1	C	5	SER	3.1
1	A	46	LYS	3.0
1	C	71	PHE	2.8
1	C	48	PRO	2.7
1	C	45	ASP	2.7
1	C	44	GLU	2.5
1	C	4	THR	2.5
1	A	5	SER	2.4
1	C	145	THR	2.3
1	A	44	GLU	2.2
1	A	4	THR	2.2
1	A	45	ASP	2.2
1	C	70	LEU	2.1
1	A	42	LEU	2.0

6.2 Non-standard residues in protein, DNA, RNA chains [i](#)

There are no non-standard protein/DNA/RNA residues in this entry.

6.3 Carbohydrates [i](#)

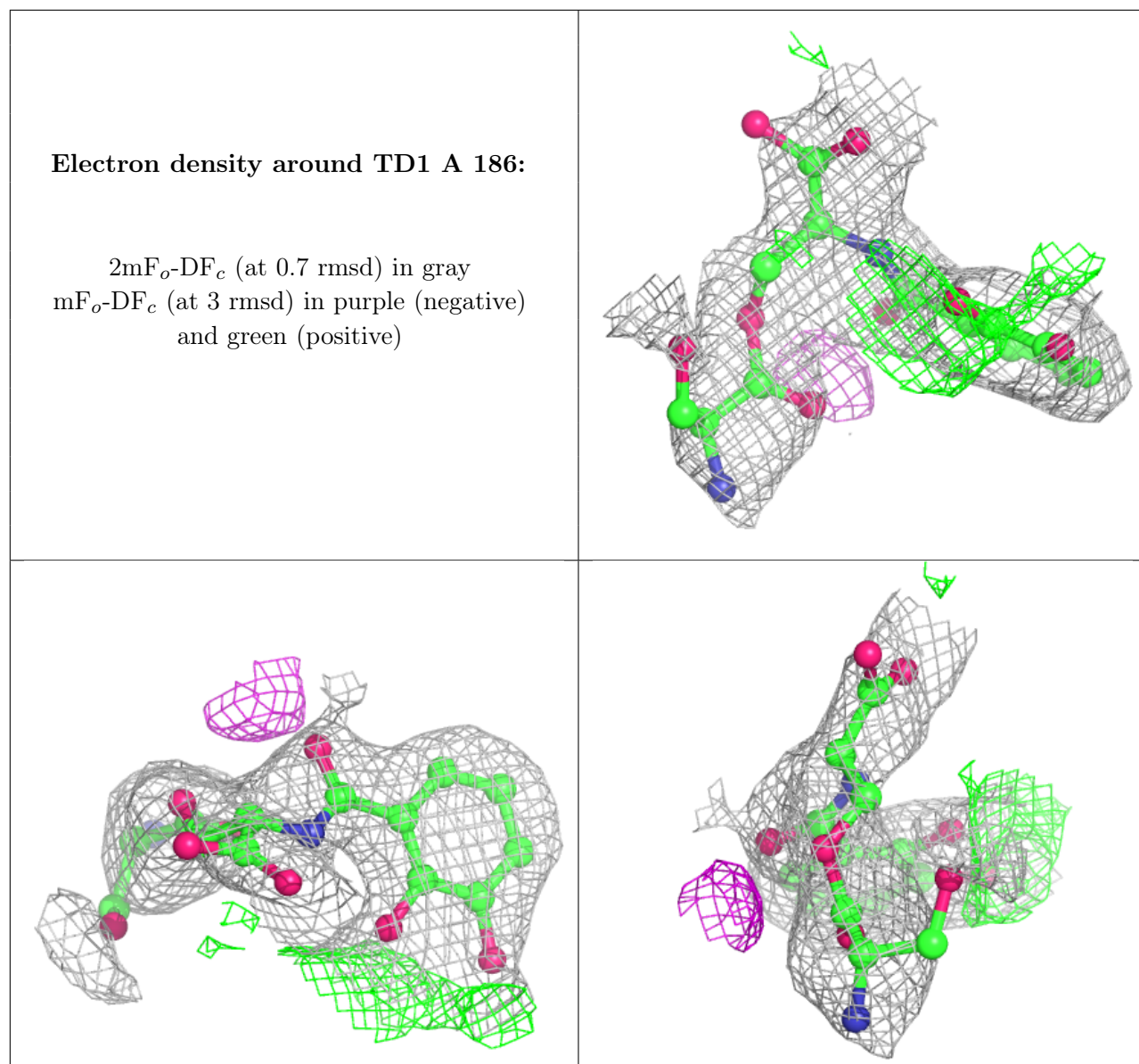
There are no monosaccharides in this entry.

6.4 Ligands [i](#)

In the following table, the Atoms column lists the number of modelled atoms in the group and the number defined in the chemical component dictionary. The B-factors column lists the minimum, median, 95th percentile and maximum values of B factors of atoms in the group. The column labelled 'Q< 0.9' lists the number of atoms with occupancy less than 0.9.

Mol	Type	Chain	Res	Atoms	RSCC	RSR	B-factors(Å ²)	Q<0.9
5	UNX	A	187	1/1	0.29	1.14	146,146,146,146	0
2	GOL	B	179	6/6	0.51	0.55	92,92,95,96	0
2	GOL	B	180	6/6	0.61	0.43	95,102,103,104	0
6	DBS	C	179	17/17	0.78	0.22	44,54,58,59	0
4	TD1	A	186	23/23	0.82	0.21	41,61,79,87	0
3	CL	A	180	1/1	0.86	0.19	51,51,51,51	1
7	DBH	B	182	11/11	0.87	0.17	48,52,59,67	0
2	GOL	A	184	6/6	0.88	0.14	53,56,59,59	0
6	DBS	B	181	17/17	0.88	0.20	35,44,62,67	0
2	GOL	A	185	6/6	0.89	0.24	40,44,45,49	0
3	CL	A	183	1/1	0.90	0.46	28,28,28,28	1
2	GOL	C	180	6/6	0.91	0.17	55,56,58,61	0
2	GOL	A	179	6/6	0.92	0.18	39,41,47,49	0
2	GOL	A	182	6/6	0.92	0.15	21,28,28,33	0
3	CL	A	181	1/1	0.96	0.05	56,56,56,56	0

The following is a graphical depiction of the model fit to experimental electron density of all instances of the Ligand of Interest. In addition, ligands with molecular weight > 250 and outliers as shown on the geometry validation Tables will also be included. Each fit is shown from different orientation to approximate a three-dimensional view.



6.5 Other polymers [i](#)

There are no such residues in this entry.